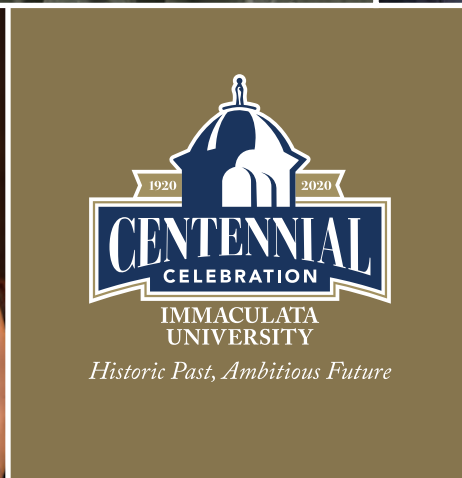




HONOR ROLL OF DONORS

JULY 1, 2020 – JUNE 30, 2021





DEAR ALUMNI & FRIENDS OF IMMACULATA,

We are pleased to present our Honor Roll of Donors for Fiscal Year 2020–2021. Please take some time to review the report, which tells a very positive story from this past year. We have experienced what we already knew; that is that Immaculatans are mighty, and when necessary, they join together to achieve their common goals. Despite a pandemic the likes of which we've not seen since Immaculata was founded, donors showed their unwavering support of the University and our students, and for that we are sincerely grateful.

Our staff worked remotely during the greater part of 2020, and we made significant progress towards our fundraising goals. Most notably, the Parsons Science Pavilion Campaign was completed, raising \$6.5 million for the construction of a state-of-the-art laboratory facility that benefits all IU students and is set to open in fall 2022. Roughly one-third of Immaculata alumni have science-related or nursing degrees, and 39% of current students are following that same path. To enhance the learning experience,

a \$600,000 *Advancing Technology, Transforming Lives* Campaign was launched this past spring to equip the Parsons Science Pavilion and Nursing Simulation Labs with the most up-to-date teaching techniques and technology.

This past year our dedicated Class Agents connected with and inspired their classmates to join in the Centennial Class Year Challenge. Thirty-two classes met the challenge, raising over \$300,000 toward Centennial year giving! (visit page 7 for a listing of those classes.) All in all, 1,632 donors recognized the importance of philanthropic giving to higher education and made gifts to Immaculata in Fiscal Year 2020–2021. Considering what transpired during that time, I restate my humble and sincere gratitude for your participation in supporting our students.

It's a very exciting time at Immaculata! The campus is open, and we welcomed a large, diverse and talented incoming freshman class to campus in August. This is our largest class since 2013! Immaculata remains a strong, successful institution due to our loyal alumni and friends, and I ask for your continued support and prayers. I look forward to seeing everyone back on campus for our Centennial Gala in October 2021.

Sincerely,

Barbara Lettiere '72
President

DEAR MEMBERS OF THE IMMACULATA UNIVERSITY COMMUNITY,

Enclosed is our Honor Roll of Donors for Fiscal Year 2020–2021 (July 1, 2020–June 30, 2021). The dedicated generosity from you, our donors, benefits our students throughout the year in the form of financial aid, scholarships and new programmatic enhancements on campus.

The Parsons Science Pavilion Capital Campaign was successfully completed in 2021, and ground was broken for the pavilion this past April. We have reached over 80% of our goal in the *Advancing Technology, Transforming Lives* Campaign. I invite you to learn more about this campaign at immaculata.edu/transform.

Our alumni events have resumed, and I invite you to join me at an Immaculata On the Road event in a town near you this fall! Please also plan to join us on campus for the rescheduled Centennial Celebration – Reunion, Gala and Mass, on October 8 & 9, 2021.

On behalf of Immaculata University's students, faculty and staff, we remain most grateful to those of you who have loyally supported Immaculata. We hope your support will inspire all alumni to demonstrate through giving why we are called the Mighty Macs!

Gratefully,

Susan W. Arnold
Vice President for Institutional Advancement

ABOUT IMMACULATA

As of December 31, 2020

98%

of traditional students have some financial aid

83%

retention rate from freshman to sophomore

84

full-time faculty

25.4%

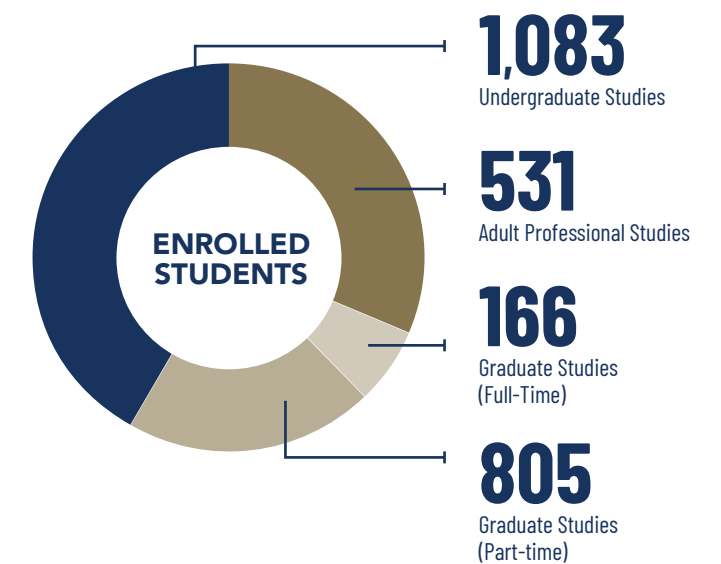
of degree-seeking students are minorities

98%

of Undergraduate classes have fewer than 30 students

209

part-time faculty



1:3 male:female ratio

1:10 faculty:student ratio

60+

Undergraduate Programs

12+

Graduate Offerings

20+

Certificate & Certification programs

35+

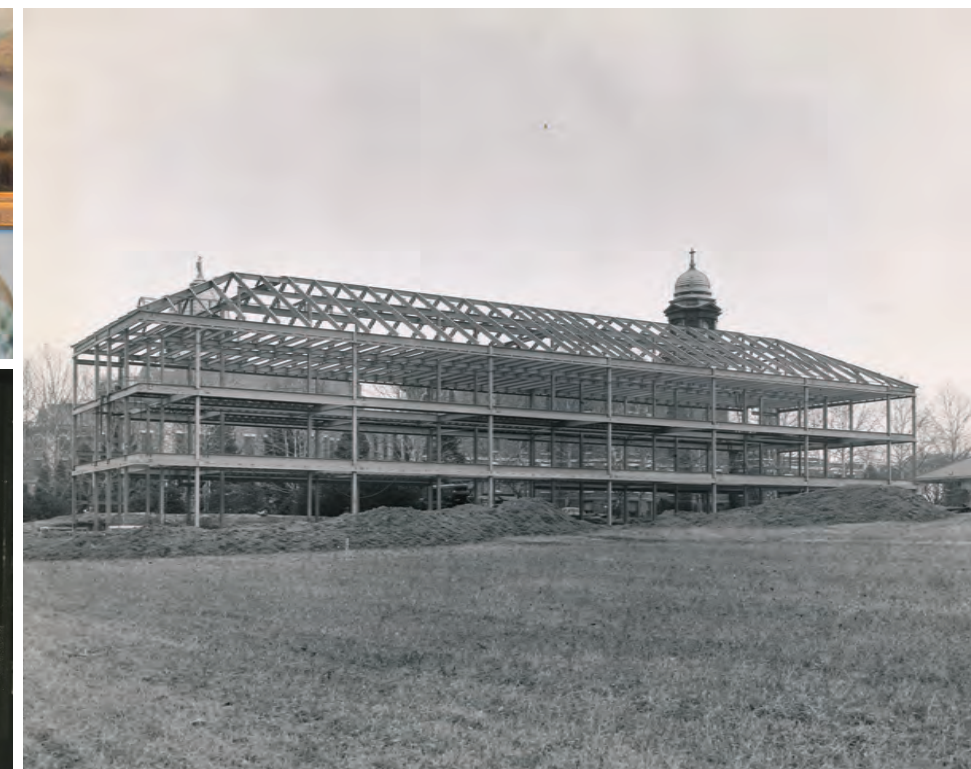
Clubs & Organizations

21

Division III sports teams & 1 Esports team

\$17.5M

current value of Immaculata University's endowment for scholarships, as of 6/30/21



IMMACULATA OVERVIEW



MISSION STATEMENT

Immaculata University, a Catholic academic community, founded and sponsored by the Sisters, Servants of the Immaculate Heart of Mary, is committed to scholarship, formation of the whole person for leadership and service, and empowerment of all to seek truth, promote justice, and engage in dialogue between faith and culture.

COLLEGE OF UNDERGRADUATE STUDIES

The College of Undergraduate Studies (CUS) serves undergraduate men and women studying full time. Students may participate in the complete undergraduate college experience including athletics, residential campus life, and student clubs and organizations.

COLLEGE OF ADULT PROFESSIONAL STUDIES

The College of Adult Professional Studies (CAPS) provides flexible programs for adults seeking undergraduate degree completion and expanded career opportunities. Formerly the College of LifeLong Learning, CAPS educates students on and off campus, in face-to-face and online learning environments.

COLLEGE OF GRADUATE STUDIES

The College of Graduate Studies (CGS) offers several highly respected master's and doctoral programs in education, management, nursing, music therapy, nutrition and psychology. With a faculty of scholar-practitioners and strong relationships with area businesses, hospitals, and school districts, Immaculata's graduate programs are synonymous with excellence and professionalism.

COST OF EDUCATION

Continuing our commitment to making a quality education affordable, Immaculata's tuition is less than it was in 2010. More than 98% of our traditional students receive some form of financial aid, and we offer a variety of housing and meal plan options so students can select what meets their individual needs.

COLLEGE OF UNDERGRADUATE STUDIES TUITION

Academic Year 2020–2021
Full-time Tuition \$26,900*
Up to 18 credits per semester

COLLEGE OF ADULT PROFESSIONAL STUDIES TUITION

Tuition for the College of Adult Professional Studies is charged on a per-credit basis.
Academic Year 2020–2021
Tuition per credit hour – Bachelor's \$540*
Discounted tuition for select Bachelor's degree programs
Tuition per credit hour – Associate \$250*

COLLEGE OF GRADUATE STUDIES TUITION

Tuition for the College of Graduate Studies is charged on a per-credit basis.
Academic Year 2020–2021
Master's courses per credit hour \$710*
Ed.D. doctoral courses per credit hour \$955*
Psy.D. doctoral courses per credit hour \$990*

* Please note cost for fees, meal plans and housing are not included in the tuition and per-credit rates listed above. Visit our website for additional details: www.immaculata.edu/admissions/tuition-fees/

ACADEMIC EXCELLENCE

POINTS OF PRIDE

Immaculata is recognized for the valuable education it provides, its student retention rate, the median salaries of its alumni, and the overall return on investment the University offers.

Here are some of our most recent accolades, academic highlights, and student accomplishments:

- 94% of the traditional undergraduate class of 2020 was employed or in continuing education within nine months of graduation. (Based on an 89% knowledge rate)
- 93% of traditional undergraduates completed internships, student teaching experiences, clinical rotations or field experiences.
- U.S. News & World Report ranked Immaculata as one of the top national universities for 2021 and one of the top performers on social mobility.
- Money Magazine named Immaculata one of the best colleges for your money four consecutive years, 2017–2020.
- PayScale ranked Immaculata's return on investment as the 35th best in Pennsylvania, out of 130 institutions.
- College Factual named Immaculata #2 in the nation for Best Nursing Colleges for Non-Traditional Students, #4 in Pennsylvania for 2020 Best Nursing Schools, and #37 in the U.S. for Best Nursing Colleges for 2020.
- Immaculata University's Division of Nursing earned the 2020 Innovations in Professional Nursing Award from the American Association of Colleges of Nursing (AACN). This award recognizes the nursing faculty's outstanding work to re-envision traditional nursing education and lead programmatic change.
- Nursing majors achieved a 89.47% NCLEX nursing licensure exam pass rate for 2019–2020.



CAMPUS ENHANCEMENTS

- Groundbreaking for the Parsons Science Pavilion was held in April 2021 and is scheduled for completion in summer 2022.
- A new nursing clinical laboratory launched in spring 2021 to support nursing pre-licensure students.
- A new music therapy clinical space and the Esports gaming room were completed.

UNIVERSITY LEADERSHIP

BOARD OF TRUSTEES

July 1, 2020–June 30, 2021

Peggy Behm '81, *Chair*
 Sister Mary Ellen Tennity, IHM '81, *Vice Chair*
 Sister Margaret Rose Adams, IHM '04 M.A.
 Phyllis Bellopede '82
 Sister Elaine de Chantal Brookes, IHM '74
 Norma C. Hall Brown '85
 Sister John Evelyn DiTrolio, IHM '75
 Cindy Mark Egnotovich '79
 Kathleen V. Greatrex '80, M.D.
 Ralph J. Hall
 Sister Regina Havens, IHM '77
 Kathleen James '74
 Patricia Knecht '91, Ph.D.
 Mary Lou Cassidy Kramer '70, Esq.
 Sister Maureen Lawrence McDermott, IHM '78, Ph.D.
 Sister Patricia Mengel, IHM '77, '96 M.A.
 Anthony J. Montagnolo
 Sister Jeannine Mary Norton, IHM '72
 Theresa Major Payton '89
 Sister Janet Purcell, IHM '72
 Sister Stephen Anne Roderiguez, IHM '92 M.A., Ed.D.
 Sister Mary Smith, IHM '69, '98 M.A.
 Mary Beth McGrath Westmoreland '88

TRUSTEES EMERITI

A.J. Gabriele
 Bernadette Maguire '57
 Mimi Draper Walsh '63

EXECUTIVE ADMINISTRATION

Barbara Lettiere '72, M.A., M.B.A.
President
 Angela Tekely, Ed.D.
Vice President for Academic Affairs & Provost
 Bruce Friedman, M.S., M.B.A., C.P.A.
Vice President for Finance and Administration
 Susan W. Arnold
Vice President for Institutional Advancement
 Sister Monica Sicilia, IHM, '95, '05 M.A.
Vice President for Marketing and Communications
 Sister Mary Henrich, IHM, '72
Vice President for Mission and Ministry
 Patricia Canterino '92, '12 M.A.
Vice President for Student Development and Undergraduate Admissions, Dean of Students

ALUMNI ASSOCIATION BOARD OF GOVERNORS

July 1, 2020–June 30, 2021

Officers

JoAnne McAdams Osborn '84, *President*
 Eileen Monahan Chopnick '73, M.B.A., *President Elect*
 Lori De Rea Kolb '05, '09 M.A., *Secretary*
 Sally Tamburello Winterton '68, Ed.D., *Immediate Past President*

Elected Delegates

Nancy Girvin Burke '68, '00 Ed.D.	James Malinowski '09
Daniel Burns '14	Jo Anne McAdams '84, '87 M.A., '96 Ed.D.
Rebecca Gutherman Conte '14	Erin McShane '16
Maureen Dupras Curry '88	David Molinaro '17
Justin Cusick '12	Kevin Moore '12
Jeanne Dagna '12 Ed.D.	Thomas Powell '10
Margie O'Donnell Donohue '73	Barbara Crea Shannon '70
Margaret Gill '74	Maria Cicippio Smeykal '83
Amy Pontzer Jones '90	Carolyn Desiderio Thompson '89
Margaret A. Lally '05, R.N., B.S.N., C.R.N.	

INSTITUTIONAL ADVANCEMENT STAFF

Susan W. Arnold, *Vice President for Institutional Advancement*
 sarnold@immaculata.edu | 610-647-4400 x3198
 Debra Beam '12, *Assistant Director of Special Events*
 dbeam@immaculata.edu | 610-647-4400 x3133
 Martha Borraccini, *Director of Advancement Services*
 mborraccini@immaculata.edu | 610-647-4400 x3681

Jeanne Bortulin, *Assistant Director of Alumni Relations*
 jbortulin@immaculata.edu | 610-647-4400 x3135

Diane D'Auria, *Administrative Assistant*
 ddauria@immaculata.edu | 610-647-4400 x3134

Elizabeth "Betty" Ginty '01, *Alumni Assistant*
 eginty@immaculata.edu | 610-647-4400 x3126

Sister M. Carroll Isselmann, IHM '72, Ed.D., *Director of Strategic Initiatives*
 cisselmann@immaculata.edu | 610-647-4400 x3119

Karen DeLucia Matweychuk '83, *Director of Alumni Relations and the Immaculata Fund*
 kmatweychuk@immaculata.edu | 610-647-4400 x3127

Jeanne M. Gelbach '66, *Alumni Volunteer, Data Integrity Specialist*
 jgelbach@immaculata.edu



Why I support Immaculata: Immaculata University made me the person I am today. Thanks to multiple opportunities for leadership, countless lessons by unforgettable professors and Sisters, and numerous events that tied me together to my classmates, IU left an indelible mark on my life.

Paul McAndrew '10, '15 M.Ed.
History; Educational Leadership

CLASS AGENTS



I give back to Immaculata because it gave me the foundation for almost everything I have today: friends for over 50 years, the knowledge that enabled me to have a great career, the values to ensure I am a great sister, aunt, and great aunt and the opportunity to demonstrate my gratitude by giving my time as a trustee and financial support so that IU may be there for those coming after me.

Kathleen James '74
Economics

Immaculata University has a strong network of volunteer partners in fundraising, our Class Agents. Along with Class Representatives, Class Agents inspire fellow classmates to support and stay connected with Immaculata. Agents work with the Office of Institutional Advancement to promote University activities, share campus news, and encourage classmates to participate in financial support of Immaculata. Class Agents are advocates for special events such as the Centennial Celebration, Day of Giving, Reunion giving, and other hallmark occasions. We thank our Class Agents, who are key leaders in connecting classmates to make a meaningful impact on the University.

Class of '59

Ruth Ann McCahon Baney '93 M.A.
 Elizabeth Foley Burns
 Eleanor Henry McCurley

Class of '61

Clarita Rapagnani Landaiche

Class of '63

Mary Anne Bensinger Gearing

Class of '68

Sally Tamburello Winterton

Class of '69

Eva T. Adams
 Peggy Masi McManus

Class of '70

Mary Louise Cassidy Kramer

Class of '71

Patricia Crea LaRocco

Class of '72

Marge Hutchinson McElroy
 Mary Jane Walters Ryan

Class of '74

Margaret Gill
 Kathleen James

Class of '76

Kathleen Gallagher Healey

Class of '83

Julianne Kleponis Yarwood

Class of '84

Jo Anne McAdams '87 M.A., '96 Ed.D.

Class of '85

JoAnne McAdams Osborn

Class of '87

Norma Hall Brown

Class of '87

Judy Hoffman

Class of '90

Amy Pontzer Jones

Kathy Freney Smith

Class of '91

Kelly Philbin

Class of '93

Bonita Lea

Class of '96

Bridget Haines-Frank

Class of '05

Lori De Rea Kolb '09 M.A.

Class of '09

Angelina Sabatini

Class of '10

Paul McAndrew '15 M.A.

Class of '11

Elizabeth Strauch

Class of '12

Justin Cusick

Jeanne Dagna Ed.D.



Historic Past, Ambitious Future

CENTENNIAL CLASS YEAR CHALLENGE

To commemorate the Centennial Celebration, alumni were encouraged to make class gifts toward class goals of \$10,000 per class for years 1950–1999, and \$5,000 per class for years 2000–2020. Gifts from January 1, 2019 through June 30, 2021 were included in the Challenge.

Congratulations to the following classes for attaining or exceeding their Challenge goal:

1952	1968	1982
1957	1969	1983
1959	1970	1984
1960	1971	1987
1961	1972	1989
1962	1973	1990
1963	1974	1991
1964	1977	2000
1965	1978	2002
1966	1979	2016
1967	1981	



BE AN AGENT!

If you are interested in serving Immaculata and your classmates as a Class Agent, please contact:

Elizabeth "Betty" Ginty
 Alumni Assistant
 610-647-4400 x3126
 eginty@immaculata.edu
 immaculata.edu/give

Cheers and thank you to our wonderful alums who are making an important impact on the future of philanthropy at Immaculata!

Listing as of May 1, 2021

BECOME ENGAGED



GIVING HAS A MUCH GREATER IMPACT ON IMMACULATA UNIVERSITY THAN YOU THINK!

WHAT IS ALUMNI PARTICIPATION?

For Class Agents and Institutional Advancement staff members alike, alumni participation is one of those things that is greater than the sum of its parts. On the surface, it's a simple calculation that gives us a number. Dig a little deeper, and it becomes a formula that represents much more than just donating.

Let's start with the methodology. To calculate participation, the numerator is the total number of alumni donors, and the total number of solicitable alumni as our denominator. "Solicitable" means contactable alumni who have not asked the University to be removed from our mailing or solicitation lists, and for whom Immaculata University has at least one valid form of contact information on file (address, phone, or email). When determining class participation, the same calculation is used, just on a smaller scale: the total number of donors in a class divided by the total number of solicitable alumni in that class.

Why is it important to increase Alumni Participation?

Now, for the "greater impact" bit: alumni participation is used by U.S. News and World Report as one of seven factors in ranking colleges and universities. **The higher our alumni participation rate is, the higher our ranking will be each year.** In addition, many granting agencies that fund colleges and universities use alumni participation as a factor when awarding grants.

In short, increasing alumni participation rates at Immaculata University will make us more appealing to prospective students and their families as well as to potential funders and grantors. In fiscal year 2020–2021, 1,297 alumni donors made a gift to Immaculata University, resulting in a 6% participation rate. Immaculata University seeks to reach an alumni participation rate of 10% in fiscal year 2021–2022. Working with the Class Agents and the Alumni Board of Governors, we will inspire alumni to demonstrate why we are called the Mighty Macs!



I support Immaculata because of the opportunities afforded to me during my time on campus. Many faculty and staff helped me realize my ambition, and I forged long-lasting friendships along the way. I want to ensure that young people just starting out at Immaculata have even more opportunities to grow personally and professionally. I feel that's part of my responsibility as an alum!

Justin Cusick '12
Marketing Management

THERE ARE MANY WAYS YOU CAN GIVE BACK TO IMMACULATA!

Make an annual gift to the Immaculata Fund

When you make an annual gift to the Immaculata Fund, you are affirming your belief in the mission of Immaculata and the impact of the education you received. All gifts to the Immaculata Fund directly benefit students through financial aid and scholarships, expanded academic offerings, and capital improvements to the campus.

Consider a lifetime gift

One of the most meaningful ways to help provide for the future of Immaculata is by making a planned gift, a gift whose benefits last for decades beyond your years. We offer many options that are right for you, ones you may not have previously considered.

Create a scholarship fund!

A named or endowed scholarship to support a particular field of study is a wonderful opportunity to provide support to students with a specified intent. Endowed scholarships and funds are held in perpetuity by the University, and the yearly interest income provides the funding for the scholarship. Named or annual scholarships are awarded as stipulated by the donor, and made available with the donor's annual gift.

Refer a student to Immaculata

Family members, neighbors, friends, co-workers—we have much to offer and would love to welcome them to share our story.

Offer to mentor a student or provide an internship

Giving students the opportunity to see how their Immaculata education is translated into a real-life setting is an important opportunity not only for students, but also for future employers.

Attend an On the Road event

The Office of Institutional Advancement has many gatherings planned throughout the northeast and mid-Atlantic regions to bring the latest information about Immaculata directly to you! We would love to have you join us and learn more about the great things taking place at Immaculata.

Come back to campus!

There are many events and happenings on campus throughout the year, including the much-beloved Carol Night, NCAA Division III sports competitions, and performances by the world-renowned Curtis Institute of Music Symphony Orchestra. We have resumed on-campus events, and if you live close by or happen to be in the area, stop by and see first-hand all that is taking place on our beautiful campus.

SUPPORT THE FUTURE

ADVANCING TECHNOLOGY, TRANSFORMING LIVES

As part of the centennial celebration, Immaculata University launched a \$6.5 million campaign to support the construction of the Parsons Science Pavilion. With the campaign's completion, Immaculata broke ground for the project on April 21, 2021.

The Parsons Science Pavilion is composed of modern laboratory spaces for chemistry and biology, complete with cutting-edge scientific and simulation equipment dedicated to science and health professions. Students are assured that they have access to training with the most up-to-date techniques and technologies.

Associated with the construction of Immaculata University's Parsons Science Pavilion, the \$600,000 *Advancing Technology, Transforming Lives* mini campaign is underway to furnish state-of-the-art simulation, biology and chemistry lab equipment.

Since fall 2018, Immaculata has experienced an 11.88% growth in undergraduate students studying STEM and health curriculums. To meet the growing enrollment of these programs, a new SIM lab is scheduled to open in fall 2021, followed by the Parsons Science Pavilion in early summer 2022.



EQUIPMENT PRIORITIES

Your support of the *Advancing Technology, Transforming Lives* Campaign makes a difference in securing the future of Immaculata students. Unique naming opportunities are available in room/lab clusters.

Nursing Simulation Lab Equipment	# of Opportunities	Equipment Cost
Control Room	1	\$3,000
Clinical Simulation Lab Equipment	1	\$4,000
Technology Supplies	2 @ \$3,000	\$6,000
Observer/Debriefing Room	2 @ \$3,500	\$7,000
Hospital Room	4 @ \$3,250	\$13,000
Sim Baby Simulation Mannequin	1	\$68,060

Critical Science Lab Equipment	# of Opportunities	Equipment Cost
General Chemistry Lab	2 @ \$12,500	\$25,000
Organic Chemistry Lab	2 @ \$17,500	\$35,000
Chemistry Majors Lab	3 @ \$50,000	\$150,000
Physical, Analytical, Instrumental and Forensic Chemistry Lab	5 @ 34,000	\$170,000
Anatomy & Physiology Lab	1	\$11,000
Environmental & Ecology Lab	1	\$22,000
General Biology Lab	2 @ 20,000	\$40,000

DONOR SOCIETIES

Leaders	\$100,000+
Benefactors	\$25,000 - \$99,999
Partners	\$15,000 - \$24,999
100th Anniversary Society Friends	\$10,000 - \$14,999
Transforming	\$7,500 - \$9,999
Advancing	\$5,000 - \$7,499
Progressing	\$2,500 - \$4,999

All individuals, corporations and foundations making investments at the Donor Society level will be listed on the corresponding Parsons Science Pavilion or Nursing Simulation Lab recognition wall. They will also receive special recognition in the Immaculata University annual Honor Roll of Donors and the Parsons Science Pavilion/Nursing Simulation Lab dedication programs.

VISIT [IMMACULATA.EDU/TRANSFORM](https://www.immaculata.edu/transform) FOR A MORE DETAILED LISTING OF NAMING AND GIFT OPPORTUNITIES.

Beginning at the \$2,500 level, your donation may be eligible for a naming opportunity, covering the cost for a portion or all of the equipment needs in a Nursing Simulation or Critical Science Lab.



As a financial and science student at Immaculata from 1963-1967, I am pleased to support the new science building to enable students to continue to excel at Immaculata.

Carol Peterman Cox '67
Mathematics

GIVING SOCIETIES

ABOUT OUR GIVING SOCIETIES

Immaculata University Giving Societies provide vital resources for scholarships, academic support, student programming and faculty development. These leadership gifts have an immediate and direct impact on our students to enhance their educational experience and create a path to opportunity that transforms lives. Immaculata remains grateful to all those who support the University through their generous participation in these societies.

THE MOTHER THERESA MAXIS SOCIETY

Named for the co-founder of the Sisters, Servants of the Immaculate Heart of Mary, Mother Theresa Maxis Duchemin, the Maxis Society has been established to recognize and honor leadership annual giving at Immaculata University. Maxis Society members, the University's most committed annual supporters, are part of a network of alumni, parents and friends that strongly believe in the mission of Immaculata and support its continued progress and growth.

Maxis Associates

Designed for graduates from the Classes of 2000–present, and includes gifts to the University for any purpose of up to \$500.

Classes of 2011–Present	\$150
Classes of 2006–2010.....	\$250
Classes of 2000–2005.....	\$500

- Benefits include special recognition in the annual Honor Roll of Donors, a special society reception, and recognition in the University Awards Gala program.
- Gifts of \$500 or more will receive an invitation to the Immaculata Circle of Giving Dinner and VIP Maxis Reception.

The Maxis Society

Gifts to the University for any purpose from \$1,000 - \$2,499

- Benefits include special recognition in the annual Honor Roll of Donors, special society reception and an invitation to the Immaculata Circle of Giving Dinner and VIP Maxis Reception.

Maxis Amethyst Circle

Gifts to the University for any purpose between \$2,500 - \$4,999

- Benefits include all of those associated with the Maxis Society, plus:
 - Welcome from the University President.
 - 2 tickets to an Immaculata Symphony performance.

Maxis Gold Circle

Gifts to the University for any purpose between \$5,000 - \$9,999

- Benefits include all of those associated with the Amethyst Circle, plus:
 - Invitation to the "Posters Under the Dome" Student Research Day and luncheon.

Maxis Platinum Circle

Gifts to the University for any purpose over \$10,000

- Benefits include all of those associated with the Gold Circle, plus:
 - Exclusive dinner with the University President and other members of the Platinum Circle.



Being able to attend the Evening Division of Immaculata gave me a chance to pursue an education in biology and chemistry while balancing my family and job obligations. And, it was my most important lifetime investment. Now by donating to the Parsons Science Pavilion, I can help fund new programs in science. It is time to give back to Immaculata for their next generation of students.

Dora Santarelli '83
Biology

THE LOYOLA SOCIETY

The Loyola Society recognizes those who have provided loyal and consistent support to Immaculata University. Donors who have made gifts to the University for any purpose and at any level for a period of five or more consecutive years (based on the University's fiscal year calendar of July 1–June 30) are automatically enrolled in the Loyola Society.

Benefits of the Loyola Society include:

- Special recognition in the University's annual Honor Roll of Donors.
- Special invitation to the University's marquee events, including Carol Night, Reunion, Gala, etc.
- Special designations for Loyola Society members who have supported IU each year since graduation as well as members who make monthly recurring gifts to IU.

THE HERITAGE SOCIETY

The Immaculata Heritage Society honors alumni, parents and friends who have included Immaculata in their estate plans, thereby helping to strengthen and preserve the University.

THE LEGACY SOCIETY

The Immaculata Legacy Society honors alumni, parents and friends who have established endowments or annuities held by a third party, thereby helping to secure the future of the University.

THE 1920 SOCIETY

The 1920 Society honors alumni, parents and friends who have given cumulative gifts of \$50,000 or more to the University.

GENEROUS DONORS



THE MAXIS SOCIETY

Named for the co-founder of the Sisters, Servants of the Immaculate Heart of Mary, Mother Theresa Maxis Duchemin, the Maxis Society has been established to recognize and honor leadership annual giving of \$1,000 or more at Immaculata University. Maxis Society members, the University's most committed annual supporters, are part of the network of alumni, parents and friends that strongly believe in the mission of Immaculata and support its continued progress and growth.

Platinum Circle, \$10,000 +

Christine Parsons Bendinelli
Rosemarie Citeroni Bicksler '69
Elizabeth A. Bricker '60 †
Ann Burgmeyer '68
The Gunard Berry Carlson
Memorial Foundation, Inc.
Commonwealth of Pennsylvania
Kathleen M. Sullivan Cosgrove '60
Michele Cairo Daloisio '71
Alisa Devlin '89, M.D.
Stella Randzio Doherty †
Kathryn Donnelly '90
Cindy Mark Egnotovich '79
Salvatore Faia and Margaret Faia
Elizabeth Parsons Forsythe
Janet Maginn Garrity '78
Margaret M. Gill '74
Jane Feely Guzikowski '50
Ralph Hall and Cinda Hall

Mary F. Healey †
Elsie Blum Heaney '59, '91 M.A.
Independence Blue Cross Foundation
Janet Ficcadenti Izzo '70
Mary Elizabeth Jones '82, Ph.D.
Frances Gallivan Kilduff '71
Eileen Peterson Kirchner '66 †
Mary Louise Cassidy Kramer '70, Esq.
and John M. Kramer, Ph.D.
Ruth Duffy Krywicki '77, Ph.D.
Barbara Lettiere '72
Maguire Foundation
Bernadette L. Maguire '57
Ann Sunday Mastrangelo '62
Jo Anne McAdams '84, '87 M.A.,
'96 Ed.D. and Frank McAdams
Margaret Mary McHugh '89
and Henry J. McHugh
The McLean Contributionship
Office Depot, Inc.
Joseph L. Parrillo
Donald F. Parsons, Jr., J.D. and
Ethel F. Parsons
Gerald J. Parsons and Eleanor Parsons
Jaye L. Gluckler Parsons '64
Leo D. Parsons and Maryanne M. Parsons
Richard M. Parsons and Claudia Parsons
Robert L. Parsons, D.O. and
Marilyn A. Parsons
Theresa Major Payton '89
Agatha Sienicki Pope '67
The Henry A. Quinn Charitable Foundation
Roberta Regetta '81
Maryann E. Hammeke Romeo '67
and Robert W. Romeo

The Sandy Hill Foundation
Sisters, Servants of the Immaculate
Heart of Mary
Eileen Heck McDevitt Slawek '52
W. W. Smith Charitable Trust
Mary Topper '60
Frederick C. Travaglini, Jr.
Mary Ann Valyo '85
Dora J. Vardaro '58
Mimi Draper Walsh '63 and
Frank E. Walsh, Jr.
Judith V. Witt, Ph.D.
Jennifer A. Yorke '89
Joan Archangelo Yue '68, J.D.

Gold Circle, \$5,000 to \$9,999

Constance Murray Anders '70
and Robert N. Anders
Maureen Callaghan Bigham '63
Joan Martinelli Brunner '52 †
Anne Marie L. Brunner
Stephen P. Carter and Patricia A. Carter
Christine Castiello '67
Kathleen H. Van Wetering Donnelly '60
Rita Hegeudus Ferraro '64
Nicole Marie Lacoste Folks '91
Melissa Smola George '00, D.O.
Margaret E. Gillis '68
Marita Roellig Green '61
Doreen M. Heath
Kathleen James '74
Rosemarie Marcaccio Joseph '73
Anne E. Cavanaugh Kearn '57
and Robert A. Kearn, Sr.
Kathleen Gildea Kelley '41 †
Barbara Deuble Kelly '77, USNR
Claudette Schilling Leyden '62
Madeleine Long, M.D.
The Henry Luce Foundation
Mary Louise Hanlon McLaughlin '57
Barbara Louise Miller
Helen Deegan Murphy '73, Esq.
J. Robert O'Donnell Trust
Patricia Schottelkott Ramonas '73
Ruth L. Rizzo '73, M.D.
Robert J. Saum
Mary Simon Staub '64
Don Tenerowicz
Vigilant Compliance, LLC
Villanova University
Wawa, Inc.
Mary Beth McGrath Westmoreland '88

Amethyst Circle, \$2,500 to \$4,999

Carol Jean Jordan Anderson '70
Association of Independent Colleges
and Universities of Pennsylvania

Ruth Ann McCahon Baney '59, '93 M.A.
Peggy Ann Behm '81
Winifred Aicher Carr '68 and
William H. Carr
Virginia Lawinski Cunningham '69, Ph.D.
Antoinette Stoerlein Delaney '59, Ph.D.
Susan E. Duffy '73
Helen Jeanne Dwyer Festa '69
Louise Anne Cipriani Luongo '70
Cecelia Maher '74
Brenda Marano '65
Jo Anne Marrone '64
Mary Lou McMenamy Parker '67, Esq.
The Presser Foundation
Clint M. Rider
Frances M. Rink '62
Susan Cipollini Skahan '81 and
Vincent D. Skahan, Jr.
Sally A. Tamburello Winterton '68, Ed.D.
The Teagle Foundation
Edgar C. Worley, Jr. and
Linda Jean Worley
WSFS Community Foundation
Margaret Bogan Young '58 †

Centennial Circle, \$1,500 to \$2,499

Susan W. Arnold
Phyllis Bellopede '82
Robert H. and Ruth G. Bowman
Charitable Foundation
Alice P. Boyle '49
Norma C. Hall Brown '85
Nancy Girvin Burke '68, '00 Ed.D.
Claire T. Daniels '94
Margaret M. O'Donnell Donohue '73
John E. Dowling '05 M.A., '20 Ed.D.
and Jill A. Oppasser
Ellucian Company LP
Karen Magda Fein '74 and
Kenneth W. Fein
Eleanor A. Fogarty '91
Francis J. Gardner
Jeanne M. Gelbach '66
Ann Cigas Good '73
Sara D. Harris '87
Judith A. Hoffman '87
Clare Jameson '80
Kerry S. Jones
Theresa A. Joniec '68
Anne Marie Kelly
Lucile C. Kramer '65
Yvonne M. Falcon Kuemmerle '63
Eleanor Gualtiere Lashley '65
Bernadette S. McLaughlin Loudon '79
Earlin Lutz, Ph.D. and Marilyn Lutz
Patricia A. McAdams '65, Ph.D.
Maureen H. McCullough '75, J.D.
Margaret E. Thomas McDermott '69
Nina M. Mulrooney '76
Oppasser Family Charitable Foundation
The Pearl Foundation
Barbara A. Piatka '62, Ph.D.

Catherine M. Pipan '87, M.D.
Paula Weidel Refi '67
Theresa Rudnicki-Jones
George P. Sabol
Paula Mroz Scarfo '82
Southeastern Pennsylvania Consortium
for Higher Education (SEPCHE)
Anita Williamson Siegenthaler '60
and Robert R. Siegenthaler
Theresa M. Weidenbaugh '06 Ed.D.
Worley's Home Services, LLC
Julianne Kleponis Yarwood '83
Amy L. Zimmerman '95

The Maxis Society, \$1,000 to \$1,499

Rev. Kyle M. Adamczyk '12
American Association of
Colleges of Nursing
Eva Adams Atkinson '46
Patricia A. Welsh Balko '79
Toni Girard Barbour '61
Katherine Junkins Baumgartner '62
Patricia Riggio Bell '67
Patricia L. Papawick Beronio '57
Mary Beth Czaus Bimmerle '86
Patricia A. Bomba '72, M.D.
Robertia Theresa Bracken '69, M.D.
Carol A. Bradley '87 M.A.
Dana McBride Breslin, Esq. '72
Helen Walsh Callaghan '62
Ann Hurley Cantwell '73
Andrew J. Carter
Kathleen Mulhern Clark '70
Margaret Anne Collins '65
Barbara VanHorn Colsey '56
Rosemary Capitola Correa '71
Sister Susan Cronin, IHM '77, Ph.D.
James J. Cunnane
Michelle Oslar Davis '89
Mary Jo Delaney '73
Maureen DeLorenzo '91
Carolyn Johnson DiFilippo '86
Ann Marie McErlain DiMarco '75
Lisa A. Dougherty '02, Esq.
Margaret Connolly Federico '64
Anne Louise Juska Flora '63
Mary Anne Bensinger Gearing '63
Anne M. Gellrich '83
Janice Bowers Gess '67
Judith Jungkurth Gladden '87
Mary Erickson Gorski '80
Angela B. Mosca Grande '75
Rita Bensinger Hartleroad '67
Kathleen Gallagher Healey '76
and Joseph Healey
Beverly Hill Lomax '60
Mary Elizabeth Hoffman '95
Margaret Monahan Hogan '63, Ph.D.
Hospital Central Services, Inc.
Sister M. Carroll Isselmann, IHM '72 Ed.D.
Pamela Carey Kenah '66
Patricia Ann Knecht '91, Ph.D.



Frances Wisniewski Kormes '65
Patricia McGarry Kraeer '70
Susan Sackett Kratzinger '68
Kathleen Cooper Kulesza '67
Virginia Aprigliano Laughlin '71
Anna Pullan Levine '61
Ruth Mark Lew '52
Regina Curry Lindsay '59
Kathryn Speaker MacNett, Esq. '70
Linda P. Malone '85
Mary Ann Perlouise Manlio '59
Sofia Totani Mathews '73
Carol McCadden Mayer '79
Brett McAllister
Joyce A. McCaffrey '66, M.D.
Margaret Hybart McDonnell '58
Suzanne Trotter McKeever '03 M.A.
Mary Jane Almond McKenna '57
Elizabeth Burnes McKinney '44
Margaret Erickson Menton '78
Christine McClennan Mesaros '86
Gary Michelson
Joan Gagliardi Monahan '63
Bernice A. Murphy †
Margaret M. Murphy '82
Carole Ann Shupe Myrter '64
Suzanne Yohey Naughton '64
Judith Heim O'Dell '70
Margot Ann O'Neill '74
Patricia Panichelli Papiez '70
Elizabeth T. Payer Pedone '69
Pennsylvania Liquor Control Board
Kelly Ann Philbin '91, '07 M.A.
M. Sidney Pinnie '02 M.A.
Richard J. Pinola
Anne Regina '76
Marion J. O'Connor Renzetti '62
Carl C. Riley
Elizabeth Cass Schmidt '74

Report includes gifts from 7/1/20 to 6/30/21. Every effort has been made to ensure accuracy. We apologize for any errors or omissions made in donor listings. † Indicates deceased

Jean Wagoner Shingle '90, Ph.D.
 Maryanne Smart '04 M.A.
 Francine Freimann Snyder '67
 Joanne Korpanty Solecki '80
 Maryellen Stemmer '76
 Karha Us '75
 Susan Jezsik Varlamoff '71
 Ted Walsh
 Bridget L. Walton '95
 Carolyn Lenz Warner '62
 Mary Ann Smith West '68
 Cynthia J. White
 Maria Luba Wikarczuk '83
 Jean Roney Yoder '60

MAXIS ASSOCIATES

For younger alumni and more recent graduates, who have supported Immaculata at leadership levels as defined according to their class year.

Classes 2011–2021, \$150+

Rev. Kyle M. Adamczyk '12
 Leslie A. Bokoski '12
 Kpehe Carter '16
 Alexandra E. Faljean Currie '11
 Justin M. Cusick '12
 Jeanne M. Dagna '12 Ed.D.
 Ann Stabile DePrisco '13
 Sydney Lauren Dixon '19
 Brittany E. Constant Gagliardi '11
 Daniel R. Klodarska '13
 Russell George Kulp '19 Ed.D.
 Maureen Liszewski '12
 Mark J. McFadden '16 Ed.D.
 Brian J. Nowak '12 and
 Ashley McGraw Nowak '12
 Caitlin Osborn '17
 Lucia Grace Pasternak '17
 Colleen L. Stanton '15
 Cristina M. Tansey '11 M.S.N., '21 Ed.D.
 Elizabeth Ann Weber '12 Ed.D.
 Meiru Zhao '13

Classes 2006–2010, \$250+

Theresa M. Weidenbaugh '06 Ed.D.

Classes 2000–2005, \$500+

Kathryn M. Campbell '02
 Cynthia Calla Christenson '03 Psy.D.
 Salvatore DiNenna '03 Ed.D.
 Lisa A. Dougherty '02, Esq.
 John E. Dowling '05 M.A., '20 Ed.D.
 Melissa Smola George '00, D.O.
 Joyce Vottima Jueell '02 Ed.D.
 Roger J. Jones '02
 Suzanne Trotter McKeever '03 M.A.
 M. Sidney Pinnie '02 M.A.
 Elizabeth Brothers Sillman '04 M.A.
 Maryanne Smart '04 M.A.
 Lisa Witulski '03

THE 100TH ANNIVERSARY SOCIETY

During the celebratory period of the Centennial (January 1, 2019–October 15, 2021), those with gifts and pledges of \$10,000 or more will automatically become members of the 100th Anniversary Society with a special recognition plaque in the new Parsons Science Pavilion.

Leaders, \$100,000+

Christine Parsons Bendinelli
 Patricia A. Bomba '72, M.D.
 Cindy Mark Egnovich '79
 Elizabeth Parsons Forsythe
 Janet Maginn Garrity '78
 Barbara Lettiere '72
 Bernadette L. Maguire '57
 Donald F. Parsons, Jr., J.D.
 and Ethel F. Parsons

Gerald J. Parsons and Eleanor Parsons
 Sister Judith Kathryn Parsons,
 IHM '87, Ph.D.

Leo D. Parsons and Maryanne M. Parsons
 Richard M. Parsons and Claudia Parsons
 Robert L. Parsons, D.O. and
 Marilyn A. Parsons
 Henry A. Quinn Charitable Foundation
 Roberta Regetta '81
 Maryann E. Hammeke Romeo '67
 and Robert W. Romeo
 Sisters, Servants of the Immaculate
 Heart of Mary
 Mimi Draper Walsh '63 and
 Frank E. Walsh, Jr.

Benefactors, \$25,000 to \$99,999

Elizabeth A. Bricker '60 †
 Christine Castiello '67
 Jeanne A. di Toro '47
 Stella M. di Toro '39 †
 Kathryn Donnelly '90
 Margaret M. Gill '74
 Pamela Tart Goergen '63
 Gunard Berry Carlson Memorial
 Foundation, Inc.
 Mary Elizabeth Jones '82, Ph.D.
 Frances Gallivan Kilduff '71
 Mary Patricia Bakey McGowan '75
 McLean Contributionship
 Dianne Majer Mundy '64
 Jaye L. Gluckler Parsons '64
 Judith V. Witt, Ph.D.

Partners, \$15,000 to \$24,999

Constance Murray Anders '70 and
 Robert N. Anders
 Carol Peterman Cox '67
 Margaret E. Gillis '68
 Ralph Hall and Cinda Hall
 Doreen M. Heath

Christine Visceglia Kanter '69
 Mary Louise Cassidy Kramer '70, Esq.
 and John M. Kramer, Ph.D.
 Cecelia Maher '74
 Mary Lou McMenemy Parker '67, Esq.
 Theresa Major Payton '89 and
 Christopher Payton
 John Daniel Reiley
 Ruth L. Rizzo '73, M.D.
 Allen L. Skinner
 Mary Topper '60
 Dora J. Vardaro '58
 Mary Beth McGrath Westmoreland '88

Donors, \$10,000 to \$14,999

Ruth Ann McCahon Baney '59, '93 M.A.
 Toni Girard Barbour '61
 Rosemarie Citeroni Bicksler '69
 Ann Burgmeyer '68
 Andrew J. Carter
 Michele Cairo Daloisio '71
 Claire T. Daniels '94
 Salvatore Faia and Margaret Faia
 Rita Hegedus Ferraro '64
 Helen Jeanne Dwyer Festa '69
 Margaret E. Gillis '68
 Marita Roellig Green '61
 Anne Marie Leonard Guicheteau '63
 Mary Beth Guyette '79
 Elsie Blum Heaney '59, '91 M.A.
 Janet Ficcadenti Izzo '70
 Kathleen James '74
 Christine Visceglia Kanter '69
 Anne E. Cavanaugh Kearn '57 and
 Robert A. Kearn, Sr.
 Patricia Ann Knecht '91, Ph.D.
 Ann Sunday Mastrangelo '62
 Jo Anne McAdams '84, '87 M.A.,
 '96 Ed.D. and Frank McAdams
 Theresa Rudnicki-Jones
 Susan Jezsik Varlamoff '71
 WSFS Community Foundation
 Jennifer A. Yorke '89
 Joan Archangelo Yue '68, J.D.

Anniversary Society, \$10,000

Constance Murray Anders '70 and
 Robert N. Anders
 Ruth Ann McCahon Baney '59, '93 M.A.
 Toni Girard Barbour '61
 Christine Parsons Bendinelli
 Rosemarie Citeroni Bicksler '69
 Patricia A. Bomba '72, M.D.
 Ann Burgmeyer '68
 Winifred Aicher Carr '68 and
 William H. Carr
 Andrew J. Carter
 Christine Castiello '67
 Carol Peterman Cox '67
 Michele Cairo Daloisio '71
 Claire T. Daniels '94
 Alisa A. Devlin '89, M.D., USAR



Kathleen H. Van Wattering Donnelly '60
 Salvatore Faia and Margaret Faia
 Rita Hegedus Ferraro '64
 Helen Jeanne Dwyer Festa '69
 Lorraine Gable Finelli '78, D.O. †
 Elizabeth Parsons Forsythe
 Janet Maginn Garrity '78
 Melissa Smola George '00, D.O.
 Margaret M. Gill '74
 Margaret E. Gillis '68
 Pamela Tart Goergen '63
 Anne Marie Leonard Guicheteau '63
 Mary Beth Guyette '79
 Ralph Hall and Cinda Hall
 Elsie Blum Heaney '59, '91 M.A.
 Doreen M. Heath
 Janet Ficcadenti Izzo '70
 IHM Alumnae
 Kathleen James '74
 Rosemarie Marcaccio Joseph '73
 and John M. Joseph, Ph.D.
 Janet Fenton Kane, Ed.D.
 Christine Visceglia Kanter '69
 Anne E. Cavanaugh Kearn '57 and
 Robert A. Kearn, Sr.
 Barbara Deuble Kelly '77, USNR
 Frances Gallivan Kilduff '71
 Patricia Ann Knecht '91, Ph.D.
 Mary Louise Cassidy Kramer '70, Esq.
 and John M. Kramer, Ph.D.
 Ruth Duffy Krywicki '77, Ph.D.
 Louise Anne Cipriani Luongo '70
 Bernadette L. Maguire '57
 Cecelia Maher '74
 Jo Anne McAdams '84, '87 M.A.,
 '96 Ed.D. and Frank McAdams
 Dianne Majer Mundy '64
 Mary Lou McMenemy Parker '67, Esq.
 Joseph L. Parrillo
 Donald F. Parsons, Jr., J.D. and
 Ethel F. Parsons
 Gerald J. Parsons and Eleanor Parsons
 Jaye L. Gluckler Parsons '64

Sister Judith Kathryn Parsons, IHM '87, Ph.D.
 Leo D. Parsons and Maryanne M. Parsons
 Richard M. Parsons and Claudia Parsons
 Robert L. Parsons, D.O. and
 Marilyn A. Parsons
 Theresa Major Payton '89 and
 Christopher Payton
 Agatha Sienicki Pope '67
 Roberta Regetta '81
 Ruth L. Rizzo '73, M.D.
 Maryann E. Hammeke Romeo '67
 and Robert W. Romeo
 Theresa Rudnicki-Jones
 Dora Santarelli '83
 Robert J. Saum
 Susan Cipollini Skahan '81 and
 Vincent D. Skahan, Jr.
 Eileen Heck McDevitt Slawek '52
 Mary Topper '60
 Susan Jezsik Varlamoff '71
 WSFS Community Foundation
 Joan Archangelo Yue '68, J.D.
 Class of 1952
 Class of 1957
 Class of 1959
 Class of 1960
 Class of 1961
 Class of 1962
 Class of 1963
 Class of 1964
 Class of 1965
 Class of 1966
 Class of 1967
 Class of 1968
 Class of 1969
 Class of 1970
 Class of 1971
 Class of 1972
 Class of 1973
 Class of 1974
 Class of 1977
 Class of 1978
 Class of 1979

Class of 1981
 Class of 1982
 Class of 1983
 Class of 1984
 Class of 1987
 Class of 1989
 Class of 1990
 Class of 1991
 Class of 2000
 Class of 2002
 Class of 2016

THE HERITAGE SOCIETY

The Immaculata Heritage Society honors alumni, parents and friends who have included Immaculata in their estate plans, thereby helping to strengthen and preserve the University.

Pamela Presley Abraham, Psy.D.
 Joan Trybala Batory '66
 Phyllis Bellopede '82
 Rosemarie Citeroni Bicksler '69
 Carol Vasko Bonnet '75
 Maria Butte '86
 Rose Marie Santucci Chastanet '65
 Robin Evasew Mottinger Cini '79
 Margaret Anne Collins '65
 Carol Peterman Cox '67
 Maria Cuddy-Casey, Ph.D.
 Leslie Ann Culp '82
 Virginia Lawinski Cunningham '69, Ph.D.
 Marilyn D'Andrea-Spica '82, M.D.
 Gloria Guaglione Di Girolamo '47
 Jeanne A. di Toro '47
 Maria A. DiBenedetto '75
 Moya Kaporch Dittmeier '81, Ed.D.
 Jean Doris '53
 Judith Graham Jester Durante '87
 Miles Edwards, Ed.D. '04
 Theresa A. Eller '06, '09 M.A.
 Helen Jeanne Dwyer Festa '69

Report includes gifts from 7/1/20 to 6/30/21. Every effort has been made to ensure accuracy. We apologize for any errors or omissions made in donor listings. † Indicates deceased

Charlene Y. Fitzwater, Ph.D.
 Gordon Keith Funk '81
 Alfonse J. Gabriele
 Jeanne M. Gelbach '66
 Adele Williams Gerngross '78, J.D.
 Patricia Thompson Gillen '65
 Margaret Mansbery Girten '85
 Barbara E. Goodwin '68
 Susan Moeller Gross '68
 Mary A. Haas '98
 George L. Head
 Elsie Blum Heaney '59, '91 M.A.
 Reverend Gregory J. Hickey
 Kevin Holleran, Esq.
 Mariellen Hoyt
 Kathleen Hirsch Hull '69
 Kathleen James '74
 Clare Jameson '80
 Mary Elizabeth Jones '82, Ph.D.
 Christine Visceglia Kanter '69
 Barbara Deuble Kelly '77, USNR
 Lucile C. Kramer '65
 Clarita Rapagnani Landaiche '61
 Susan Lesh '82
 Barbara Lettiere '72
 Madeleine Long, M.D.
 Jacqueline Dunleavy Longo '90
 Marijo Lucas, Ph.D.
 Bernadette L. Maguire '57
 Janice I. Mahan
 Antoinette Iaquinto Makowski '60
 Mary Ann Perlouise Manlio '59
 Wilma Hsiang Mao '56
 Jo Anne Marrone '64
 Joyce A. McCaffrey '66, M.D.
 Jane Ann McLaughlin '54, Ed.D.

Melanie A. Macko Miles '69
 Joan Gagliardi Monahan '63
 Joan Thomas Morrow '61
 Phyllis Eyth O'Brien '64
 Jean M. O'Donnell '46
 Lynn Hubbard Ouellette '66
 Mary Lou McMenamy Parker '67, Esq.
 JoAnn M. Paslawsky '73
 Loretta C. Chirico Perthes '70
 Sara M. Pletcher '08
 Andree Lennon Pride '81
 Vreni Ranjo
 Denise Charette Rentschler '84
 Ruth L. Rizzo '73, M.D.
 Felicia Rocchi '79
 Maryann E. Hammeke Romeo '67
 Catherine Raso Scensny '58
 Anita Williamson Siegenthaler '60
 Grace Kelley Skrzypczak '62
 Patricia Pidgeon Smith '61
 Mary Simon Staub '64
 Nadine F. Sutton '01
 Terry A. Terzuolo '71
 James J. Thatcher, Ph.D.
 Joseph Tumolo
 Marie McFarland Vincent '57
 Carolyn Lenz Warner '62
 Patricia C. Washburn '91 M.A.
 Mary Newell Welch '61
 Doris L. Werner '63
 Sally A. Tamburello Winterton '68 Ed.D.
 Judith V. Witt, Ph.D.
 Kathleen York Witten '86
 Julianne Kleponis Yarwood '83
 Amy L. Zimmerman '95
 Sharon Reed Zogby '70



Estate Gifts and Bequests received during Fiscal Year 2020-2021:

Estate of Elizabeth A. Bricker '60
 Estate of Joan Martinelli Brunner '52
 Estate of Stella R. Doherty
 Estate of Mary F. Healey
 Estate of Kathleen Gildea Kelley '41
 Estate of Eileen Peterson Kirchner '66
 Estate of Bernice A. Murphy '54
 J. Robert O'Donnell Trust
 Estate of Margaret Bogan Young '58

THE LEGACY SOCIETY

The Immaculata Legacy Society honors alumni, parents and friends who have established endowments or annuities held by a third party, thereby generously providing a secure stream of income for scholarships and programs for the University in perpetuity.

Brian Apgar
 Margaret M. Beauchesne
 Nicholas F. Borrelli, Ph.D.
 Dolores M. D'Alessandro Bozzelli '52 † and Andrew Bozzelli †
 Francis A. Breen, Jr., M.D. †
 John D. Burke †
 Thomas F. Burke, Ph.D.
 Kathleen M. Sullivan Cosgrove '60
 Cecilia M. DeLuca †
 Sharon Denny '65, M.D.
 Jeanne A. di Toro '47
 Stella M. di Toro '39 †
 Sister Kathleen C. Doult, IHM, D.M.A.
 Suzanne C. Earley '42 †
 Joan Bell Edmonds '52 † and Patrick G. Edmonds
 Gertrude Virginia Falini-Nunan '50 †
 Nicole Marie Lacoste Folks '91
 Barbara Miriam Fossett
 Karen Gallagher
 Margaret Vassalotti Gottlieb '46, M.D. †
 Kathleen V. Greatrex '80, M.D.
 Carl Guarino, J.D.
 Jane Feely Guzikowski '50
 William Healey and Mary Healey †
 Mary Louise Cassidy Kramer '70, Esq. and John M. Kramer, Ph.D.
 Beverly Hill Lomax '60
 Madeleine Long, M.D.
 Marijo New Lucas, Ph.D.
 Bernadette L. Maguire '57
 Margaret M. McHugh '89 and Henry J. McHugh
 John McLaughlin †
 Gary Michelson
 Melanie A. Macko Miles '69
 Richard J. Pinola
 Cheryl Dever Rapp '85 and Kevin Rapp

Robert J. Ricciardi and Nancy Ricciardi
 Joanne Salop
 Robert J. Saum
 William S. Saum
 The Society of the Friendly Sons of Saint Patrick for the Relief of Emigrants
 James J. Thatcher, Ph.D.
 Barbara C. Travaglini '91 † and A. Frederick Travaglini †
 Mary Ann Valyo
 Don L. Verdiani
 Vincent L. Verdiani †
 Mimi Draper Walsh '63 and Frank E. Walsh, Jr.
 Mary M. Wehrmann
 Denise Aquilante Weidman '97
 Judith V. Witt, Ph.D.

THE 1920 SOCIETY

The 1920 Society honors alumni, parents and friends who have given cumulative gifts throughout their lifetime of \$50,000 or more to Immaculata University.

Visionaries, \$1 million+

Kathryn Tucker Alexander '31 †
 The Connelly Foundation
 Alfonse Gabriele and Barbara Gabriele
 Barbara Lettiere '72
 Bernadette L. Maguire '57
 The Sandy Hill Foundation
 Sisters, Servants of the Immaculate Heart of Mary
 W. W. Smith Charitable Trust
 Mimi Draper Walsh '63 and Frank E. Walsh, Jr.

Benefactors, \$500,000 to \$999,999

Marjorie Gildea Alford '38 †
 Joan Bell Edmonds '52 † and Patrick G. Edmonds
 Theresa K. Fagan '39 †
 Janet Maginn Garrity '78
 The Maguire Foundation
 Virginia M. McNabb †
 The Pew Charitable Trusts
 Barbara Carlson Travaglini '91 †

Partners, \$100,000 to \$499,999

The George I. Alden Trust
 The Ametek Foundation, Inc.
 The Annenberg Foundation
 Aramark Higher Education Group
 The Arcadia Foundation
 Barnes & Noble College Booksellers, Inc.
 The Elsie E. and Joseph W. Beck Foundation
 Phyllis Bellopede '82 and Robert Bellopede
 Sister Regina Francis Bigley '38 †
 Elizabeth Walsh Bole '50 †



Marie G. Bossert †
 Dolores D'Alessandro Bozzelli '52 † and Andrew Bozzelli †
 John D. Burke † and Paula S. Burke †
 Sister Mary Consuela Callaghan, IHM †
 Richard A. Campion
 The Gunard Berry Carlson Memorial Foundation, Inc.
 Alice McCrystal Carney '48 †
 Winston J. Churchill, Jr.
 Kathleen Sullivan Cosgrove '60 and James Cosgrove
 Virginia Lawinski Cunningham '69, Ph.D.
 Cecelia M. DeLuca †
 Jeanne A. di Toro '47
 Stella M. di Toro '39 †
 Cindy Mark Egnotovich '79
 Gertrude V. Falini-Nunan '50 †
 William S. Fishman †
 Margaret M. Gill '74
 Pamela Tart Goergen '63
 Margaret Vassalotti Gottlieb '46, M.D. †
 Janice Murphy Gruber '69 and Bernard Gruber †
 Carl Guarino, J.D.
 Jane Feely Guzikowski '50
 William J. Healy and Mary Healy †
 Doreen M. Heath
 Christine Visceglia Kanter '69
 Mary Louise Cassidy Kramer '70, Esq. and John M. Kramer, Ph.D.
 The Kresge Foundation
 The Christian R. and Mary F. Lindback Foundation
 Bernadette Herbst Loeb '59, M.D. †
 Joan Hefton Lynn '49 †
 Jane M. MacDermott †
 Marianna Marchese '41 †
 Mary Catherine McCall '40 †

Margaret Mary McHugh '89 and Henry J. McHugh
 Eileen McKelvey '29 †
 Margaret McKelvey '28 †
 Gary Michelson
 Rosa DeFrancesco Minsker '43 †
 Thomas W. Morelli † and Edna Morelli
 Helen Nickels †
 Agnes Boyle O'Donnell '48 † and J. Robert O'Donnell †
 Mary Lou McMenamy Parker '67, Esq.
 Gerald J. Parsons and Eleanor Parsons
 Jaye L. Gluckler Parsons '64
 Richard M. Parsons and Claudia Parsons
 Theresa Major Payton '89 and Christopher Payton
 PNC Financial Services Group
 Henry A. Quinn Charitable Foundation
 Catharine A. Raferty '30 †
 Veronica Gorman Raidy '54
 Trieste Musa Rao '37 †
 Roberta Regetta '81
 Edward J. Roach †
 Maryann E. Hammeke Romeo '67 and Robert W. Romeo
 Eileen Heck McDevitt Slawek '52
 Anne Springer '39 †
 Dora J. Vardaro '58
 Grace Burns Vincent '31 †
 The Frank Visceglia Foundation
 Judith V. Witt, Ph.D.
 Sister Marie de Brebeuf Zvigaitis, IHM '38 †
 Stanley and Apolonia Zvigaitis Family Memorial

Associates, \$50,000 to \$99,999

Mary Carroll Abell †
 Ruth Ann McCahon Baney '59
 Christine Parsons Bendinelli

Report includes gifts from 7/1/20 to 6/30/21. Every effort has been made to ensure accuracy. We apologize for any errors or omissions made in donor listings. † Indicates deceased

Ruth McDonald Booth '30 †
 Ruth Guerin Bowman '45 †
 The Michael A. Bruder Foundation
 Stephen P. Carter and Patricia A. Carter
 Rita E. Collins '63
 CoreStates Bank
 Cue and Curtain Players
 Sharon Denny '65, M.D.
 Kathleen Van Wetering Donnelly '60
 Kathryn A. Donnelly '90
 Jean Doris '53
 Sister Kathleen C. Douth, IHM, D.M.A.
 Edward K. Driebe †
 Susan E. Duffy '73
 Suzanne C. Earley '42 †
 The Charles Edison Fund
 Thomas J. Ford, Ed.D. and Maureen Ford
 Elizabeth Parsons Forsythe
 James P. Gallagher, Sr., Ph.D.
 Margaret E. Gillis '68
 William J. Good †
 Kathleen V. Greatrex '80, M.D.
 Marita Roellig Green '61
 H.J. Heinz Company Foundation
 Helen S. Kane †
 The T. James Kavanagh Foundation, Inc.
 Florann Strohle Knecht '49 †
 Patricia O'Neill Kraus '62
 John D. Lane † and Rachel Lane †
 Madeleine Long, M.D.
 Louise Anne Cipriani Luongo '70
 Cecelia Maher '74
 Eileen Guinee Marshall '39 †
 Joseph A. Matjesic † and
 Patricia M. Matjesic

Jo Anne McAdams '84, '87 M.A.,
 '96 Ed.D. and Frank McAdams
 John McLaughlin †
 The McLean Contributionship
 Eleanor Wandlass Miller '34 †
 Marie Louise Mullen '45 †
 Nina M. Mulrooney '76
 Margaret M. Murphy '82
 Bernadette Brett O'Boyle '40 †
 Office Depot, Inc.
 Donald F. Parsons † and
 Elizabeth Parsons †
 Donald F. Parsons, Jr., J.D. and
 Ethel F. Parsons
 Sister Judith Kathryn Parsons, IHM '87, Ph.D.
 Leo D. Parsons and Maryanne M. Parsons
 Robert L. Parsons, D.O. and
 Marilyn A. Parsons
 PECO Energy Company
 Richard J. Pinola
 The Presser Foundation
 Gino Primus
 Ruth L. Rizzo '73, M.D.
 Grace Kelley Skrzypczak '62
 Grace Small '45 †
 Francine Freimann Snyder '67
 Mary Simon Staub '64
 The Teagle Foundation
 James J. Thatcher, Ph.D.
 Widener Memorial Foundation in
 Aid of Handicapped Children

THE LOYOLA SOCIETY

The Loyola Society recognizes those alumni, parents and friends who have provided loyal and consistent financial support to Immaculata University. The following donors have made gifts, of any size and for any purpose, for the past five or more consecutive years.

Eva T. Adams '69
 Justine Hawthorn Adams '47
 Margaret Rohan-Agnello '69
 Joann Guicheteau Alba '72
 Jo Anne DiLauro Alexander '61
 Maria H. Alonso '78, M.D.
 Jane Anne Donlan Alter '63
 Constance Murray Anders '70
 Crelia Anoaia '77
 Margaret M. Hoepp Apice '73
 Patricia Simpson Arata '74
 Stephen D. Armstrong '90, '06 B.S.N.
 Marlene M. Lambiase Auxer '64
 Suzanne Babyar-Rothbart '76, Ph.D.
 Frances Short Bailey '60
 Ruth Ann McCahon Baney '59, '93 M.A.
 Toni Girard Barbour '61
 Jeannette L. Barr '07
 Michael P. Barrett
 Joan Trybala Batory '66
 Laverne Gavron Bauer '59
 Debra Lynn Beam '12
 Peggy Ann Behm '81
 Phyllis Bellopede '82
 Patricia L. Papawick Beronio '57
 Rosemarie Citeroni Bicksler '69

Maureen Callaghan Bigham '63
 Marie Kenney Bishop '58
 Leslie A. Bokoski '12
 Mary Kate Boland
 Sister Marie Roseanne Bonfini, IHM '57
 Kathleen A. Bonner '76
 Carol Vasko Bonnet '75
 Martha W. Borraccini
 Jeanne Bortulin
 Alice P. Boyle '49
 Eileen Marie Ross Boyle '80
 Carol A. Bradley '87 M.A.
 Daniella M. Bradley '76
 Margaret Ann Bradley '73
 Mary Rodenhauser Branagan '60
 Carol Ann Ziegler Breslin '64
 Clare Kirwan Briody '62
 Anne Donnellan Brown '89
 Mary Theresa Brown '87 M.A.
 Mary-Jo Worrell Bundens '64
 Ann Burgmeyer '68
 Linda L. Francis Burke '93 M.A.
 Maryanne Longshore Burke '73
 Geraldine Ferrari Burton '57
 Patricia Gorman Burton '59
 Nancy A. Byrne '59
 Susan Caccese '69
 Helen Walsh Callaghan '62
 Gloria M. Kuklinski Cangelosi '74
 Mary Laska Cannella '68
 Gwen Menton Cantarera '07
 Patricia Canterino '92, '12 M.A.
 Catherine Marrella Caprio '70
 Nancy Fahy Carey '60
 Marie I. Boffa Carnabuci '57
 Joan Schmidt Carr '59
 Winifred Aicher Carr '68
 Anne Marie Carroll '77
 Dolores Anne Sims Carroll '57
 Barbara Ann Morris Casale '64
 Rita Schaeffer Caspar '64
 Elizabeth Cass-Schmidt '74
 Christine Castiello '67
 Thomas C. Castner, '07 Ed.D.
 Patricia Ann Cerchio '79
 Eileen Monahan Chopnick '73
 Cynthia Calla Christenson '03 Psy.D.
 Susan Petrarca Cifa '72 and Silvio F. Cifa
 Estelle Donohue Cincotta '60
 Anna May Clark '80
 Kathleen Mulhern Clark '70
 Carol Clark-Hutelmeyer '75
 Patricia Carey Cochran '62
 Ann Pyzik Colduvell '74
 Patricia Coletti '74
 Margaret Anne Collins '65
 Barbara VanHorn Colsey '56
 Patricia Stranen Connelly '70
 Gayle Conaty Connolly '60
 Ronald Conti and Emily M. Conti
 G. Scott Cornell '09



Lisa Coroniti '82
 Sheela Worsfold Corry '64
 Anne Marie McDonnell Corwell '67
 Roberta Giordano Costigan '65
 Kathleen A. Costigan DeHaut '73
 Frances Schoeniger Coughlin '55
 Carol Peterman Cox '67
 Anne Marie Crich '71
 Catherine Suzanne Culp Cristinzio '64
 Gia Croce '88, V.M.D.
 Mary Jane Culbertson '89 M.A.
 Leslie Ann Culp '82
 Margaret Short Cumming '68
 Virginia Carr Cunningham '62
 Virginia Lawinski Cunningham '69, Ph.D.
 Justin M. Cusick '12
 Jeanne M. Dagna '12 Ed.D.
 Anita Maginn Dahlquist '72
 Michele Cairo Daloisio '71
 Joseph P. Darlington, Jr. '82
 Grant Davis
 Ann Rudolph Dean '63
 Mary McQuillen DeCaro '72
 Antoinette Stoerlein Delaney '59, Ph.D.
 Susan Podlesnie Delaney '71
 Thomas DeLucia and Patricia DeLucia
 Marya C. DiTaddeo Dempsey '86
 Joan Ludwig Denzler '51
 Mary S. DePaolo-Roach
 Gloria Guaglione Di Girolamo '47
 Denise Sullivan Dill '64
 Salvatore DiNenna '03 Ed.D.
 Kathleen H. Van Wetering Donnelly '60
 Margaret M. O'Donnell Donohue '73
 Graciela Gil Donovan-O'Donnell '69
 Jean Doris '53
 Heather G. Lovelette Dotchel '96
 Patricia M. Duch '65
 Helene M. Delaney Duffy '64
 Mary Anne Burns Duffy '67
 Sue Ann Taber Duffy '72
 Susan E. Duffy '73
 Sharon Dula-Henik '92

Helen M. Frank Dunigan '56
 Cindy Mark Egnotovitch '79
 Francine Colangelo Eisenmann '78
 Napoleon Elortegui
 Kathleen Costello Eng '72
 Stephanie Slawinski Erdman '72
 Marie Faccioli Erkes '62
 Kathie Estock '99 Ed.D.
 George T. Evans
 Carolyn Fagan '80
 Elizabeth Gotshall Faunce '90, Ph.D.
 Margaret Connolly Federico '64
 Karen Magda Fein '74 and
 Kenneth W. Fein
 JoAnn Ferrara-Waity '67
 Helen Jeanne Dwyer Festa '69
 Marie Salvatore Fidance '52
 Eileen M. Fiorentino Figueroa '57
 Barbara Carnathan Finegan '56
 Marita Donohue Fisher '67
 Natalie Fisher '95 M.A.
 Anne Fitzgerald '64
 William J. Flanagan
 Anne Louise Juska Flora '63
 Jane A. Flynn '69
 Eleanor A. Fogarty '91
 Maureen Donahue Fogerty '97
 Nicole Marie Lacoste Folks '91
 Alice Duff Foreman '69
 Maureen Neylon Fox '72
 Eileen Carr France '60
 Judy A. Franco '01
 Barbara Fritsche '66
 Marguerite T. Canavan Gaffney '60
 Eleanor Burke Garber '55
 Frank L. Garritano '08 Ed.D.
 Janet Maginn Garrity '78
 Mary Ann T. Gasparro '67
 Mary Anne Bensinger Gearing '63
 Jeanne M. Gelbach '66
 Anne M. Gellrich '83
 Rosemary Benson Gennaro '54
 Melissa Smola George '00, D.O.



Report includes gifts from 7/1/20 to 6/30/21. Every effort has been made to ensure accuracy. We apologize for any errors or omissions made in donor listings. † Indicates deceased



Janice Bowers Gess '67
Christine A. Giardini '99 M.A.
Lynn E. Anderson Gibson '65
Margaret M. Gill '74
Mary E. Gillane '76
Margaret E. Gillis '68
Elizabeth E. Ginty '01
Patricia Keller Giusti '68
Elizabeth S. Gladulich '08
Joseph Gnias
Catherine R. Schwarz Gold '71
Mary Erickson Gorski '80
Deborah A. Hutter Goss '93, M.D.
Helen Kelley Grady '61
Winifred McGonigal Green '50
Denise Impagliazzo Griffiths '67
Diane C. Gryger '77
Anne Marie Leonard Guicheteau '63
Virginia E. Guyer '99
Jane Feely Guzikowski '50
Bridget A. Haines-Frank '96
Barbara A. Lalinsky Hale '65
Beth Anne Hoffman Hansel '84
Mary McCusker Harkins '70
William Harkins
Sara D. Harris '87
Rita Bensinger Hartleroad '67
Joan R. Henning Healy '59
Elsie Blum Heaney '59, '91 M.A.
Doreen M. Heath
Judith Ivers Hedtke '71
Kathleen M. O'Grady Hendricks '68
Sister Mary Henrich, IHM '72
Suzanne Feiring Heron '71
Katherine Jespersen Hill '72
Sara Marie Hoben '60
Judith A. Hoffman '87
Mary Elizabeth Hoffman '95

Margaret Monahan Hogan '63, Ph.D.
Carol Ann Welsh Hohman '62
Barbara Smith Holtz '56
Patricia Modrys Hourigan '63
Kathleen Hughes '73
Joseph E. Hutter and Mary Anne Hutter
Sister M. Carroll Isselmann, IHM '72 Ed.D.
Janet Ficcadenti Izzo '70
Kathleen James '74
Clare Jameson '80
John Jameson '94, '97 M.A.
Sister Paula Regina Jameson, IHM '82, Ph.D.
Regina Parisien Jean-Claude '84
Amy Pontzer Jones '90
Joseph P. Jones and Wendy Jones
Theresa A. Joniec '68
Rosemarie Marcaccio Joseph '73
Patricia Duffy Juliano '83
Mola Chu Jung '60
Mary E. Draye Jurgensen '60
Lisa Kamp '01
Jeanne Marie Ross Karaim '70
Justine Maksymik Kayes '61
Patricia J. Kealy '73
Sister Marie Hubert Kealy, IHM '57, Ph.D.
Anne E. Cavanaugh Kearn '57 and
Robert A. Kearn, Sr.
Joanne Rossi Kearney '64
Marjorie McLaren Keen '74
Nancy Hohl Keller '65
Barbara Deuble Kelly '77, USNR
Carol C. Kelsall, '15 Ed.D.
Elizabeth Ann Kempf-Townsley '82
Pamela Carey Kenah '66
Mary Kay Heim Kennedy '72
Sheila O'Brien Kennedy '72
Robert Bruce Kern and Joan Kern
Ross Kershey

Frances Gallivan Kilduff '71
John R. Kilsheimer
Ann Herd Klein '75
Susan Koehler '03 M.A.
Heather B. Koelle '84
Margaret A. Kuhn Kolarsick '68
Frances Wisniewski Kormes '65
Lucile C. Kramer '65
Mary Louise Cassidy Kramer '70, Esq.
and John M. Kramer, Ph.D.
Karen Kropp '99 A.A., '00 B.A.
Yvonne M. Falcon Kuemmerle '63
Ann Marie Lahey '98
Fernanda Berghardt Lamb '65
Clarita Rapagnani Landaiche '61
Mary Ann Lang '71
Kathleen Kiely Lapusheski '62
Patricia Crea LaRocco '71, M.D.
Eleanor Gualtiere Lashley '65
Mary Zurbach Last '67, Ph.D.
Virginia Aprigliano Laughlin '71
Bonita Lynnette Lea '93
Mary Sheehan Leahy '54
Robert Leardi, M.D.
Kristy A. Rupp Legenstein '91
Barbara Lettiere '72
Anna Pullan Levine '61
Mary Lou Blake Lewandowski '70
Claudette Schilling Leyden '62
Ellen DeJulio Lilly '68, Ed.D.
Fay M. Stappen Linkiewicz '05
Kathleen Mendte Logan '60
Bernadette S. McLaughlin Louden '79
Louise Anne Cipriani Luongo '70
Earlin Lutz, Ph.D. and Marilyn Lutz
Bernadette L. Maguire '57
Cecelia Maher '74
Antoinette Iaquinto Makowski '60
Kathleen Costello Malin '78
Mary Ann Malinyak Burcin '90
Judy Beck Malloy '62
Mary Anne Roddy Malone '74
Janice Haller Mancuso '68
Wilma Hsiang Mao '56
Brenda Marano '65
Judy Marra Martelli '75
Kathleen A. Martin '96
Nicole Bertolini Martin '99
Ann Sunday Mastrangelo '62
Janice Gardler Mattera '80
Karen DeLucia Matweychuk '83
Lesley Maurer '05
Carol McCadden Mayer '79
Jo Anne McAdams '84, '87 M.A., '96 Ed.D.
Paul Robert McAndrew '10, '15 M.A.
Conal McBride '07
Kathleen McMahan McCabe '69
Joyce A. McCaffrey '66, M.D.
A. Patricia Dailey McCann '49
Mary Frank McCormick '50
Kathy Taglianetti McCrea '87

Maureen H. McCullough '75, J.D.
Margaret E. Thomas McDermott '69
Barbara E. Gross McDonald '61
Ellen Meisner McDonnell '60
Mary Whalen McDonnell '64
Marge Hutchinson McElroy '72
Maryellen McGarry '62
William A. McGinley and
Margaret McGinley
Wanda Polite McGlinchey '57
Margaret McGlone Scichili '71
Margaret Sculley McGuckin '56
Marliss McGuinness
Mary Eileen Farrell McHugh '58
Joanne A. McKee '04 and
Bernard M. McKee
Joanne McKee '63
Kathleen H. McKee '74, '81 B.S., Ph.D.
Mary Jane Almond McKenna '57
Elizabeth Burnes McKinney '44
Jane Ann McLaughlin '54, Ed.D.
Maria Castaldi McLaughlin '88
Marita McManus '60
Chrystine Wetzel McNamara '71
Rhoda Melson McQuiston '56
Mary Lou Dwyer McSpirit '62
Sheila M. Meehan '72
Alberta Kargl Mellert '59
Maryann M. Citeroni Mendel '65
Gary Michelson
Loretta France Mihalik '61
Melanie A. Macko Miles '69
Lawrence C. Miller, D.M.D.
Viviane Novia Miller '74
Francis Xavier Milles '92 M.A.
Rose Arico Mioskie '62
Linda Colozzi Mitchell '68
Sister Denise Mollica, IHM '69
Joan Gagliardi Monahan '63
Steady Moono '02 Ed.D.
Patricia A. Hatchard Moore '62
Patricia Maguire Morris '70
Douglas K. Mountz '06 Ed.D.
Beth Ann Mull '96 M.A., '02 Psy.D.
Holly Jean Schmuker Mullan '85
Nina M. Mulrooney '76
Kathleen Costello Murphy '75
Kathleen Dugan Murphy '60
Margaret M. Murphy '82
Margaret Moffitt Murphy '74
Mary K. Montague Murphy '61
Suzanne Yohey Naughton '64
Joanna Kubicki Nealon '65
Suzanne M. Huck Neubauer '72, Ph.D.
Virginia Neumer '84
Aldia Newfield Longo '69
Margaret Niven '72
Jean Morrissey Noble '51
Karen Filbey Nocella '83
Sister Jeannine M. Norton, IHM '72
Phyllis Eyth O'Brien '64

Judith Heim O'Dell '70
Marie Lyons O'Donnell '61
Helen O'Connell O'Grady '63
Susan Forsyth O'Grady '72
Roberta Maier Olliver '62
Margot Ann O'Neill '74
Mary Jane Turner O'Rourke '75
Victoria Sclafani Orzechowski '67
and Leonard Orzechowski
JoAnne L. McAdams Osborn '84
Lynn Hubbard Ouellette '66
Mary Boyd Palascak '68
Mary Lou McMenemy Parker '67, Esq.
Gerald J. Parsons and Eleanor Parsons
Jaye L. Gluckler Parsons '64
Sister Judith Kathryn Parsons, IHM '87, Ph.D.
Leo D. Parsons and Maryanne M. Parsons
Richard M. Parsons and Claudia Parsons
Elizabeth Trout Pawlowski '58
Theresa Major Payton '89
Loreta Chirico Perthes '70
Marian Petchik '70
Kelly Ann Philbin '91, '07 M.A.
Barbara A. Piatka '62, Ph.D.
Bobbijo Grillo Pinnelli, Ed.D.
Catherine M. Pipan '87, M.D.
Marianina Pletcher
Sara M. Pletcher '08
Marie Louderback Polifko '69
Grace Sharon Arena Pomrink '67
Rita Barr Porreca-Ward '64
Sandra Porter '81
Justine O'Brien Post '52
Dolores Giordano Prokapus '56
Vreni Ranjo
Eunice Timoney Ravenna '92
Elaine McSherry Rebsamen '62

Paula Weidel Refi '67
Anne Regina '76
Janice Heiken Reilly '62
Maria Terry Remley '86
Denise Charette Rentschler '84
Jacqueline Perricone Resavage '68
Eleanore Miragliotta Richard '65
Barbara Brinton Richards '84
Dorothea Magowan Richardson '77
Clint M. Rider
Annette Rineer-Tighe '86 M.A.
Adriana Kalpas Riordan '67
Maria Rivera-Trudeau '64
Ruth L. Rizzo '73, M.D.
Scott A. Rombach and Pamela J. Rombach
Maryann E. Hammeke Romeo '67
and Robert W. Romeo
Rosemary Ronan '60
Cecilia Gross Rose '75
Irene levins Rudnytzky '59
Mary Jane Walters Ryan '72
Nancy Castiglioni Sarcione '49
Regina Cerino Saude '65
Robert J. Saum
Marie Scandone '71
Paula Mroz Scarfo '82
April Barra Scepanski '02
Maryann C. Schalleur '65
Eileen Jasienski Schiappa '72
Elizabeth Herbert Schiesser '62
Geraldine McGowan Schmid '67
Theresa Ovecka Scholl '64, Ph.D.
Valarie Schwarz '68
Margaret Kelly Seery '64
Barbara Crea Shannon '70
Regina M. Schnell Shannon '75
Ann Hankison Sharpe '54



Report includes gifts from 7/1/20 to 6/30/21. Every effort has been made to ensure accuracy. We apologize for any errors or omissions made in donor listings. † Indicates deceased



Robert S. Shaw '00 Psy.D.
 Marilyn Manak Sheils '02
 Jean Wagoner Shingle '90, Ph.D.
 Margaret O'Brien Shoemaker '68
 Anita Williamson Siegenthaler '60
 Susan Cipollini Skahan '81
 M. Trudy Pavlik Slade '68
 Rose Kenny Slizewski '66
 Kathleen Freney Smith '90
 Joseph D. Smola and Melanie Smola
 Joyce Ann Marin Solar '60
 Joanne Korpanty Solecki '80
 Judith Facenda Souders '67
 Jane Dash Souther '65
 Maureen S. Spitz '04
 Lori Heffelfinger Spoor '91
 Margaret Anne Stein '68
 Anne Campo Strasser '62
 Elizabeth M. Strauch '11
 Mary Hannahoe Stumhofer '62
 Alicia Borkowski Sumilas '69
 Howard Sundwall
 Mary Johnson Switkay '79
 Lydia S. Szyjka '09 M.A.
 Robert M. Tafuro and Carol B. Tafuro
 Moira A. Frost Tamburello '73
 William Telford, III and Nancy Lee Telford
 Kenneth B. Tenley
 Kathleen M. Theilacker '02, '07 M.A.
 Anne Carroll Thompson '59
 Lois Leiden Tilles '63
 Carol A. Ellis Tomlinson '68
 Lorraine Ferrari Tracy '63
 Joseph J. Trench
 Marie Menna Trivelli '59
 Helen Ann Turner '59
 Anne M. Tyrrell '72
 Rita Mancuso Tyson '65
 Helen M. Higgins Uhl '64
 Karha Us '75
 Dora J. Vardaro '58

Roberta Wright Verostick '67
 Susan Sturm Vicario '67
 Mary Ann Castelli Walsh '66
 Mimi Draper Walsh '63 and
 Frank E. Walsh, Jr.
 Diane Brennan Warner '73
 Patricia C. Washburn '91 M.A.
 Eileen Helm Weaver '97 Ed.D.
 Kathleen Wynne Webb '71
 Elizabeth Ann Weber '12 Ed.D.
 Mary S. Weeks '73
 Mary M. Wehrmann
 Theresa M. Weidenbaugh '06 Ed.D.
 Catherine McHenry Weiss '63
 Mary Ann Smith West '68
 Kathleen Quinlan Whalen '62
 Earl B. White, Jr.
 Joanne White '94 M.A.
 Charlotte Marie France Wilks '67
 Barbara Williams Willis '83
 Therese Thistle Willis '60
 Mary G. Wilson '92
 Sally Tamburello Winterton '68, Ed.D.
 Louise Gaul Witham '70
 David D. Witulski and Elizabeth Witulski
 Sharon A. Slimbaugh Wolf '64
 Carol Ann Wirth Wolff '70
 Dorothy Bradley Wolfgang '64
 Deborah Cantwell Wynne '61
 Julianne Kleponis Yarwood '83
 Jean Roney Yoder '60
 Anita L. Giuliani Young '57
 Barbara Naiman Young '61, M.D.
 Amy L. Zimmerman '95
 Barbara F. Murphy Zupko '68
 Michele Knappe Zurad '68

GIVING BY CLASS

Immaculata is most grateful to the following alumni donors for their generous support during the 2020–2021 fiscal year. Alumni are listed by year in which they obtained their first IU degree.

Class of 1941 | Participation: 100%
 Kathleen Gildea Kelley †

Class of 1944 | Participation: 33%
 Elizabeth Burnes McKinney

Class of 1946 | Participation: 29%
 Eva Adams Atkinson
 Margaret Ward Kelly

Class of 1947 | Participation: 22%
 Justine Hawthorn Adams
 Gloria Guaglione Di Girolamo

Class of 1948 | Participation: 5%
 Leah Porturas Landaveri

Class of 1949 | Participation: 63%
 Joanne M. Shovlin Annas
 Alice P. Boyle
 A. Patricia Dailey McCann
 Nancy Castiglioni Sarcione
 Rose Marie Wells

Class of 1950 | Participation: 32%
 Elise Furey Dunne
 Winifred McGonigal Green
 Jane Feely Guzikowski
 Eileen Clancy Kearney
 Mary Frank McCormick
 Dorothy G. Wolper †

Class of 1951 | Participation: 25%
 Mary Jane Jones Breen
 Joan Ludwig Denzler
 Mary Koppenhafer Dondero
 Sister Claudine Hagerty, IHM
 Jean Morrissey Noble

Class of 1952 | Participation: 24%
 Joan Martinelli Brunner †
 Ann Marie Buckley Carney
 Marie Salvatore Fidance
 Ruth Mark Lew
 Justine O'Brien Post
 Eileen Heck McDevitt Slawek

Class of 1953 | Participation: 12%
 Jean Doris
 Joanne Biegler Snyder

Class of 1954 | Participation: 22%
 Theresa Papan Demanop
 Penelope Holloway Fitzgerald
 Rosemary Benson Gennaro
 Mary Sheehan Leahy
 Jane Ann McLaughlin, Ed.D.
 Ann Hankison Sharpe
 Rose Mary Vesce Sparano

Class of 1955 | Participation: 17%
 Patricia Johnston Bisciotti
 Frances Schoeniger Coughlin
 Eleanor Burke Garber
 Marie Ronca Herrschaft
 Margaret Kennedy Wagner

Class of 1956 | Participation: 26%
 Barbara VanHorn Colsey
 Helen Frank Dunigan
 Barbara Carnathan Finegan
 Barbara Smith Holtz
 Wilma Hsiang Mao
 Margaret Sculley McGuckin
 Rhoda Melson McQuiston
 Dolores Giordano Prokapus
 Rosalia Cortes Sepan

Class of 1957 | Participation: 33%
 Anonymous
 Patricia Papawick Beronio
 Sister Marie Roseanne Bonfini, IHM
 Geraldine Ferrari Burton
 Marie Boffa Carnabuci
 Dolores Sims Carroll
 Eileen Fiorentino Figueroa
 Helen Troy Hayes
 Sister Marie Hubert Kealy, IHM, Ph.D.
 Anne Cavanaugh Kearn
 Carolyn Harris Kilpatrick
 Dorothy Stopper MacDermott
 Bernadette L. Maguire
 Wanda Polite McGlinchey
 Mary Jane Almond McKenna
 Mary Louise Hanlon McLaughlin
 Eleanor McLaughlin O'Kane
 Anita Giuliani Young

Class of 1958 | Participation: 40%
 Margaret Rademaker Bielen
 Marie Kenney Bishop
 Dolores Gibson Cipolone

Dolores Streibig Di Giacomo
 Mary Jane Fuoco Dye
 Kathryn Killian Gordon
 Jeanne Vachon Iannotta
 Joanne Seeman Kolen
 Gladys Grant Maguire
 Margaret Hybart McDonnell
 Mary Eileen Farrell McHugh
 Elizabeth Trout Pawlowski
 Barbara Aston Randall
 Ann Marie Marinaro Saccaro
 Dora J. Vardaro
 Christine Campbell Whelehan
 Margaret Bogan Young †

Class of 1959 | Participation: 28%
 Ruth Ann McCahon Baney '93 M.A.
 Laverne Gavron Bauer
 Elizabeth Foley Burns
 Patricia Gorman Burton
 Nancy A. Byrne
 Joan Schmidt Carr
 Antoinette Stoerlein Delaney, Ph.D.
 Joan Henning Healy
 Elsie Blum Heaney '91 M.A.
 Mary Clare Schilling Johnson
 Regina Curry Lindsay
 Mary Ann PerLouise Manlio
 Nancy James Mastrian
 Eleanor Henry McCurley
 Alberta Kargl Mellert
 Irene Ievins Rudnytzky
 Anne Carroll Thompson
 Marie Menna Trivelli
 Helen Ann Turner

Class of 1960 | Participation: 41%
 Frances Short Bailey
 Mary Rodenhauer Branagan
 Patricia Quinlan Bray
 Elizabeth A. Bricker †
 Nancy Fahy Carey
 Estelle Donohue Cincotta
 Sheila A. Clifford
 Gayle Conaty Connolly
 Kathleen Sullivan Cosgrove
 Claire Hibner d'Arcy
 Kathleen H. Van Wattering Donnelly
 Eileen Carr France
 Elizabeth Rose Francis
 Marguerite Canavan Gaffey
 Marie Gannotti
 Sara Marie Hoben
 Mola Chu Jung
 Mary Draye Jurgensen
 Kathleen Mendte Logan
 Beverly Hill Lomax
 Antoinette Iaquinto Makowski
 Anita Jackson Martin
 Catherine Modrys Maurice
 Ellen Meisner McDonnell
 Anne Holland McGinley

Marita McManus
 Kathleen Dugan Murphy
 Susan Irvin Murphy
 Mary Sheehy Pratt
 Rosemary Ronan
 Brenda Stabile Sansone
 Elizabeth Brennan Schnepf
 Elinor Schoppet, Ph.D. †
 Anita Williamson Siegenthaler
 Joyce Ann Marin Solar
 Ann Deegan Tickner
 Mary Topper
 Therese Thistle Willis
 Jean Roney Yoder

Class of 1961 | Participation: 38%
 Jo Anne DiLauro Alexander
 Mary Trad Arege
 Toni Girard Barbour
 Frances Carey Burns
 Marian Brennan Cantwell
 LeAndrea Werthmann Conine
 Carole Manuszak Devlin
 Mary Matthews Ferrier
 Bev DeFrancesco Geddis
 Mary Jane Gibbons
 Estherann Grace, M.D.
 Helen Kelley Grady
 Marita Roellig Green
 Elizabeth Wutzer Hans
 Bernie Douglas Kalfelz
 Justine Maksymik Kayes
 Marlene Cotsack Kelly
 Clarita Rapagnani Landaiche
 Anna Pullan Levine
 Adela S. Malfaro
 Eileen Campbell Mallouk
 Joan A. Marquette
 Patricia Hawes Martin
 Barbara Gross McDonald
 Rosemary Dowling Merwin
 Loretta France Mihalik
 Mary Montague Murphy
 Marie Lyons O'Donnell
 Barbara Lynch Raymond
 Deborah Cantwell Wynne
 Barbara Naiman Young, M.D.

Class of 1962 | Participation: 37%
 Clare Kirwan Briody
 Katherine Junkins Baumgartner
 Helen Walsh Callaghan
 Pauline Novak Clark
 Patricia Carey Cochran
 Maureen Fleming Collins
 Roseann McCarty Cooper
 Virginia Carr Cunningham
 Margaret Klopfle Devlinney, Ph.D.
 Sister Kathleen C. Doult, IHM, D.M.A.
 Marie Faccioli Erkes
 Dolores McShea Fennell
 Carol Ann Welsh Hohman

Report includes gifts from 7/1/20 to 6/30/21. Every effort has been made to ensure accuracy. We apologize for any errors or omissions made in donor listings. † Indicates deceased

Margaret Torpey Jones
 Kathleen Kiely Lapusheski
 Claudette Schilling Leyden
 Margaret M. Lindner
 Judy Beck Malloy
 Ann Sunday Mastrangelo
 Maryellen McGarry
 Mary Lou Dwyer McSpirit
 Rose Arico Mioskie
 Patricia Hatchard Moore
 Roberta Maier Olliver
 Barbara A. Piatka, Ph.D.
 Rafaella Madonna Rasi
 Elaine McSherry Rebsamen
 Janice Heiken Reilly
 Marion O'Connor Renzetti
 Frances M. Rink
 Elizabeth Herbert Schiesser
 Mary Murphy Schmelzer
 Bonita Fasciott Scott
 Frances Thorpe Smith
 Anne Campo Strasser
 Mary Hannahoe Stumhofer
 Carolyn Lenz Warner
 Kathleen Quinlan Whalen

Class of 1963 | Participation: 33%

Jane Anne Donlan Alter
 Anne Tkac Belding
 Maureen Callaghan Bigham
 Anita Quinlisk Bowser
 Mary Lee Theresa Bradley
 Rita E. Collins
 Ann Marie Boeck Corrozi
 Ann Rudolph Dean
 Anne Louise Juska Flora
 Mary Anne Bensinger Gearing
 Anne Marie Leonard Guicheteau
 Roseanne Salvatore Hofmann, Ed.D.
 Margaret Monahan Hogan, Ph.D.
 Patricia Modrys Hourigan
 Dorothy Crenny Kenney
 Yvonne Falcon Kuemmerle
 Marie Santoro Lisi
 Joanne McKee
 Joan Gagliardi Monahan
 Helen O'Connell O'Grady
 Louise Antonucci Pascale
 Dianne French Sarno
 Lois Leiden Tilles
 Lorraine Ferrari Tracy
 Mimi Draper Walsh
 Catherine McHenry Weiss
 Lynne Griffin Yancey

Class of 1964 | Participation: 39%

Patricia Remmell Allen
 Virginia Walz Alpaugh
 Mary Tryson Arnold
 Marlene Lambiase Auxer
 Gaytana Pino Balesterieri
 Carol Ann Ziegler Breslin

Mary-Jo Worrell Bundens
 Barbara Ann Morris Casale
 Rita Schaeffer Caspar
 Sheela Worsfold Corry
 Catherine Culp Crinzio
 Jean Horan Cunningham
 Joel Cipriani Curran
 Denise Sullivan Dill
 Helene Delaney Duffy
 Margaret Connolly Federico
 Rita Hegedus Ferraro
 Anne Fitzgerald
 Susan Donohue Gallagher
 Constance Vecchione Hershey
 Agnes Devine Howkins
 Joanne Rossi Kearney
 Marcella Dugan Kerlin
 Anne Kilkenny Lavin
 Margaret Hogan Manning
 Jo Anne Marrone
 Mary Whalen McDonnell
 Paula Genuardi Molnar
 Carole Ann Shupe Myrter
 Suzanne Yohey Naughton
 Frances Fowler Nottleson
 Phyllis Eyth O'Brien
 Jaye L. Gluckler Parsons
 Dorothy H. Quick
 Carolyn Quigley Rathmann
 Theresa Ovecka Scholl, Ph.D.
 Margaret Kelly Seery
 Mary Simon Staub
 Anne Boyden Tanner
 Maria Rivera Trudeau
 Helen Higgins Uhl
 Helena Gowan Volansky
 Rita Barr Porreca Ward
 Sharon Slimbaugh Wolf
 Dorothy Bradley Wolfgang

Class of 1965 | Participation: 30%

Kathleen Greiner Boehm
 Judith Anne Brindle
 Kathleen O'Hara Carroll
 Noreen Cassidy Cheleden
 Margaret Anne Collins
 Roberta Giordano Costigan
 Kathryn Pierce Cox †
 Patricia M. Duch
 Margaret Begley Herald Evans
 Dotsy Aires Fitts
 Lynn Anderson Gibson
 Barbara Lalinsky Hale
 Susan Ideman Hamilton
 Nancy Hohl Keller
 Kathryn Blair Knox
 Frances Wisniewski Kormes
 Lucile C. Kramer
 Fernanda Berghardt Lamb
 Joan C. Lambert, D.O.
 Eleanor Gualtiere Lashley
 Brenda Koetzner Lyons



Immaculata has always made me happy. I was happy as a student, as an active alum and now, as a volunteer. Why would I not give back to the college/university that has made me happy for more than 50 years?

Jeanne Gelbach '66

Economics

Barbara Nicolella Maiorano
 Mary Ann Owens Male, Ph.D.
 Brenda Marano
 Patricia A. McAdams, Ph.D.
 Sandra Shuler McCormack
 Maryann Citeroni Mendel
 Joanna Kubicki Nealon
 Susan Holtz Nicharot
 Ann Wawrzak Pirnot
 Donna Gibson Poling
 Eleanore Miragliotta Richard
 Elaine Rizzi Salvo
 Regina Cerino Saude
 Maryann C. Schalleur
 Jane Dash Souther
 Rachel Franzini Suraci
 Lynn Bender Tracey
 Rita Mancuso Tyson

Class of 1966 | Participation: 27%

Anonymous (2)
 Rosemary Albano
 Joan Trybala Batory
 Mary Duffy Campbell
 Cynthia Soffel Clark
 Patricia Looby Cotton
 Judith Fasciott Daley

Barbara Fritsche
 Joan Salamanca Gallagher
 Jeanne M. Gelbach
 Geraldine Bucha Harrison
 Mary K. Jordan, Ph.D.
 Pamela Carey Kenah
 Eileen Peterson Kirchner †
 Ellen Parry Liguori
 Susan Garrett Lione
 Joyce A. McCaffrey, M.D.
 Mary Emily Oakes McCormick
 Patricia Gilda McGuire
 Antoinette O'Connell
 Bonnie VanHorn Ortner
 Lynn Hubbard Ouellette
 Mary Seely Robertson
 Marie Olivieri Russell, M.D.
 Suzanne Frenoy Scanlon
 Millie Ecock Seeds
 Carol Barrie Thompson
 Marianne Hartmann Vanora
 Mary Agnew Vernick
 Mary Ann Castelli Walsh
 Rosemarie Sickora Wert

Class of 1967 | Participation: 33%

Jacqueline Rinaldi Altschuler
 Patricia Riggio Bell
 Geraldine Bell
 Donna Manus Burrell
 Christine Castiello
 Anne Marie McDonnell Corwell
 Carol Peterman Cox
 Mary Anne Burns Duffy
 Marjorie P. Dugan, Ph.D.
 JoAnn Ferrara-Waity
 Marita Donohue Fisher
 Judith Greeley French
 Mary Ann T. Gasparro
 Jane M. Gerlach
 Janice Bowers Gess
 Judy Garthwaite Grifa
 Denise Impagliazzo Griffiths
 Rita Bensinger Hartleroad
 Kathleen Cooper Kulesza
 Mary Zurbach Last, Ph.D.
 Rita Iacovelli Lombardo
 Lucille Lamontagne Markle
 Anne Marie Phillips Martin
 Victoria Sclafani Orzechowski
 Mary Lou McMenemy Parker, Esq.
 Grace Sharon Arena Pomrink
 Agatha Sienicki Pope
 Paula Weidel Refi
 Adriana Kalpas Riordan
 Maryann Hammeke Romeo
 Maria Venditti Scarcelle
 Geraldine McGowan Schmid
 Utang Fain Shorter
 Roseanne Fitzpatrick Shveima
 Francine Freimann Snyder
 Judith Facenda Souders

Roberta Wright Verostick
 Susan Sturm Vicario
 Carol Szmurlo Whiteman
 Charlotte France Wilks

Class of 1968 | Participation: 32%

Eileen Kain Buoni
 Ann Burgmeyer
 Nancy Girvin Burke '00 Ed.D.
 Mary Laska Cannella
 Winifred Aicher Carr
 Barbara Consorto
 Eileen Church Coyne
 Margaret Short Cumming
 Eileen Curran Kondrad
 Marianne Rudnicki Danks
 Kathleen Holtz Deal, Ph.D.
 Jacqueline Thompson Deckel
 Alana Gullotta DePrisco
 Anne Columbo Des Marais
 Margaret M. Dugan
 Sister Kathleen Dullea, SHCJ
 Mary Anne Angelozzi Ellmer
 Barbara M. Flanigan
 Elizabeth Brashears Garvin
 Catherine Shipman Gavin
 Margaret E. Gillis
 Victoria Guiteras Giunta-Abbott
 Patricia Keller Giusti
 Kathleen O'Grady Hendricks
 Theresa A. Joniec
 Margaret Kuhn Kolarsick
 Margaret Makowski Konopka
 Susan Sackett Kratzipger
 Susan La Bella
 Lynn Lewis
 Ellen DeJulio Lilly, Ed.D.
 Janice Haller Mancuso
 Linda Colozzi Mitchell
 Mary Boyd Palascak

Arlene Peterson
 Jacqueline Perricone Resavage
 Kathleen Seguin Saltmarsh
 Cynthia Sansone
 Valarie Schwarz
 Margaret O'Brien Shoemaker
 M. Trudy Pavlik Slade
 Margaret Anne Stein
 Judith Burpo Thomas
 Carol Ellis Tomlinson
 Mary Ann Smith West
 Sally Tamburello Winterton, Ed.D.
 Joan Archangelo Yue, J.D.
 Joanne Vitello Zappile
 Barbara Murphy Zupko
 Michele Knapple Zurad

Class of 1969 | Participation: 38%

Eva T. Adams
 Margaret Rohan Agnello
 Rosemarie Citeroni Bicksler
 Roberta Theresa Bracken, M.D.
 Susan Caccese
 Florence Love Chapman
 Molly Thomas Churnetski
 Sister Marie Anselm Cooper, IHM
 Donna Manns Cover
 Virginia Lawinski Cunningham, Ph.D.
 Marie Lopinto Dacey, Ed.D.
 Helen Jeanne Dwyer Festa
 Jane A. Flynn
 Alice Duff Foreman
 Sister Helen Dolores Gilroy, IHM
 Ritamarie McNamee Hazlett
 Joann Cunningham Hoffman
 Maryann Monville Homan
 Kathryn Hoover Alexander
 Kathleen Hirsch Hull
 Margaret Opila La Rosa
 Elizabeth A. Lanahan



Report includes gifts from 7/1/20 to 6/30/21. Every effort has been made to ensure accuracy. We apologize for any errors or omissions made in donor listings. † Indicates deceased

Margaret Bransfield Maguire
 Kathleen McMahon McCabe
 Margaret Thomas McDermott
 Kathleen Daley McKinley, Ph.D.
 Margaret Masi McManus
 Melanie A. Macko Miles
 Sister Denise Mollica, IHM
 Cathleen Cleary Mundry
 Aldia Newfield Longo
 Paula Pisani Nicoletti
 Graciela Gil Donovan O'Donnell
 Elizabeth T. Payer Pedone
 Sharon Rose Pierce
 Marie Louderback Polifko
 Mary Lynn Jakucs Ray
 Jane Theisson Rogers
 Jean Nolfi Romano
 Sister Alice Schaebler, IHM
 Eileen Galdo Schank
 Mary Jo Dougherty Sharkey
 Grace O'Brien Shields
 Alicia Borkowski Sumilas
 Susan Richards Thorne
 Eileen Jaeger Varia
 Mary Ann Canfield Wolfgang

Class of 1970 | Participation: 39%

Constance Murray Anders
 Carol Jean Jordan Anderson
 Kathryn Kroeger Anderson
 Alice McGrath Berringer
 Mary Magner Burke
 Sister Monica Joseph Cadden, IHM
 Catherine Marrella Caprio
 Nancy J. Cassel
 Ellen Hayes Cerritelli
 Ann Lasek Cipriani
 Kathleen Mulhern Clark
 Patricia Stranen Connelly
 Lucy Casella D'Angelo
 Denise Schmid Doyle
 Mary Ellen Looby Goodwin
 Helen Cattalo Halpin
 Mary McCusker Harkins
 Janet Ficcadenti Izzo
 Sandy Lione Jerome
 Jeanne Marie Ross Karaim
 Kathleen McGowan Kopf
 Patricia McGarry Kraeer
 Mary Louise Cassidy Kramer, Esq.
 Catherine Luongo Kraus
 Izanne Leonard-Haak
 Mary Lou Blake Lewandowski
 Kathleen Morgan Linaugh
 Elaine Betz Linck
 Bonnie Brill Ludwig
 Louise Anne Cipriani Luongo
 Patricia Maguire Morris
 Sharon Carton O'Brien
 Judith Heim O'Dell
 Carol Cherry Otis
 Patricia Panichelli Papiez

Susan McDevitt Patterson
 Loreta Chirico Perthes
 Marian Petchik
 Margaret Mills Rosa
 Sister Joan Rychalsky, IHM
 Barbara Crea Shannon
 Ann Marie Conway Six
 Kathryn Speaker MacNett, Esq.
 Virginia Derham Sullivan
 Margaret Ann Ulrich
 Mary Monastra Verdi
 MaryLou Carlbon Wilhelm
 Louise Gaul Witham
 Carol Ann Wirth Wolff
 Sharon Reed Zogby

Class of 1971 | Participation: 27%

Anonymous (1)
 Christine Hoffmann Adams
 Diana Puglisi Babb
 Jacqueline R. Bradley
 Sister Anne Marie Burton, IHM, Ed.D.
 Rosemary Casey Peterson, M.D.
 Margaret DuBois Connors
 Rosemary Capitola Correa
 Anne Marie Crich
 Michele Cairo Daloisio
 Susan Podlesnie Delaney
 Charlene Carnvale Delanoy
 Joanne Boylan Doherty
 Sandra Galetto D'Onofrio
 Joan Hartleroad Fisher
 Marie Thomas Fortunato
 Catherine Schwarz Gold
 Susan E. Greb Golding
 Donna Golanoski Gorka
 Judith Ivers Hedtke
 Suzanne Feiring Heron
 Maryann Salotto Hildick
 Susan Langan Bailey Hunt

Regina Campetti Jewell
 Frances Gallivan Kilduff
 Mary Ann Lang
 Virginia Aprigliano Laughlin
 June List
 Victoria Dombrowski Lloyd
 Sister Angela M. Mastrangelo, IHM '95 M.A.
 Margaret McGlone Scichili
 Chrystine Wetzel McNamara
 Marilyn Mendte
 Ellen Burke Orlando
 Michele Ottor Ortiz
 Marie Scandone
 Mary Ann Ferguson Stetler
 Carol Murray Theriault
 Susan Jezsik Varlamoff
 Kathleen Wynne Webb

Class of 1972 | Participation: 34%

Joann Guicheteau Alba
 Rosemary Angelo
 Patricia Hearing Backer
 Patricia A. Bomba, M.D.
 Dana McBride Breslin, Esq.
 Susan Petrarca Cifa
 Valarie Collins Costanzo
 Anita Marchei Cunningham
 Anita Maginn Dahlquist
 Mary McQuillen DeCaro
 Patricia Fanning Donnelly
 Sue Ann Taber Duffy
 Kathleen Costello Eng
 Stephanie Slawinski Erdman
 Mary Fiori Flynn
 Maureen Neylon Fox
 Jacqueline Sergi Gallombardo
 Mary Ellen Winarski Gerlach
 Sister Mary Henrich, IHM
 Katherine Jespersen Hill
 Patricia Sullivan Holthaus



I donate to Immaculata because I could never repay the University for what I've been given... Love of God, love of good friends, love of a great career, love of lifelong learning, and love of my Immaculata Ring!

Mary Jane Walters Ryan '72
French

Sister M. Carroll Isselmann, IHM, Ed.D.
 Geraldine Coletta Ivy
 Patricia Love Johnson
 Leslie Boyd Karlsson
 Diane Hoebich Keane
 Sheila O'Brien Kennedy
 Mary Kay Heim Kennedy
 Margaret Knox-Lee
 Sheila Konczewski
 Valerie-Anna Koukos Langmayer
 Jeanne Weingartner Lapsa
 Barbara Lettiere
 Marge Hutchinson McElroy
 Barbara Majewski McHale
 Sheila M. Meehan
 Susanna E. Metz
 Mary Anne Bates Mills
 Suzanne Huck Neubauer, Ph.D.
 Margaret Niven
 Sister Jeannine M. Norton, IHM
 Susan Forsyth O'Grady
 Mary Jane Walters Ryan
 Eileen Jasienski Schiappa
 Barbara Burns Shaw
 Eileen Miller Simzak
 Ana Giebel Sisson
 Anne M. Tyrrell
 Patricia Spada Vizza
 Susan Brons Wagner
 Magdalen Hon Wu

Class of 1973 | Participation: 30%

Margaret Hoepf Apice
 Constance Schleicher Boyle
 Margaret Ann Bradley
 Maryanne Longshore Burke
 Anne Marie Capista Caggiano
 Nancy T. Caldarola, Ph.D.
 Geraldine Breslin Callahan
 Ann Hurley Cantwell
 Lucille Grabowski Cantwell
 Eileen Monahan Chopnick
 Eileen Hunt Correll
 Patricia Forster Cunningham
 Kathleen Costigan DeHaut
 Mary Jo Delaney
 Margaret O'Donnell Donohue
 Susan E. Duffy
 Joanne Yannelli Gerhart
 Colleen McDonald Geniec
 Ann Cigas Good
 Rosemary Sherlock Graf

Kathleen Hughes
 Marylee Siano Johnson
 Rosemarie Marcaccio Joseph
 Patricia J. Kealy
 Kathleen Shannon Licata
 Michelle Ventura Mallozzi
 Sofia Totani Mathews
 Maria Ann Michalik Midas
 Helen Deegan Murphy, Esq.
 JoAnn M. Paslawsky
 Elizabeth Hoffman Quinn
 Patricia Schottelkott Ramonas
 Ruth L. Rizzo, M.D.
 Moira Frost Tamburello
 Diane Brennan Warner
 Jacqueline Koller Weber
 Mary S. Weeks
 Linda Hutsko Zegley, Ph.D.
 Carolyn Vignola Zogby

Class of 1974 | Participation: 28%

Anonymous (1)
 Elizabeth M. Ackroyd
 Rita Passalacqua Aciri
 Patricia Simpson Arata
 Gloria Kuklinski Cangelosi
 Maureen Hearing Carey
 Ann Pyzik Colduvell
 Patricia Coletti
 Denise Conway Crawford
 Janet Carbaugh Cumberworth
 Karen D'Agusto, Esq.
 Melissa Delmonico McGinnis
 Mary K. Doherty
 Janet Young Eline
 Mollie Lichty Fahnestock
 Christine Decker Feidler
 Karen Magda Fein
 Cynthia Gabrielli, D.O.
 Margaret M. Gill
 Kathleen James
 Patricia Reese Jordan
 Marjorie McLaren Keen
 Cathleen Love
 Cecelia Maher
 Mary Anne Roddy Malone
 Theresa Marinelli Matthews
 Kathleen McDermott
 Kathleen McLaughlin McGurk
 Kathleen H. McKee, Ph.D.
 Viviane Novia Miller
 Margaret Moffitt Murphy

Marilyn Jeanne Nigro
 Margot Ann O'Neill
 Dolores Nancy Potts '05 M.A.
 Elizabeth Cass Schmidt
 Valerie Perry Stasalovich
 Vitina Bucca Symanski

Class of 1975 | Participation: 20%

Carol Vasko Bonnet
 Therese M. Connell †
 Maria A. DiBenedetto
 Ann Marie McErlain DiMarco
 Maureen McCreary Eckenroth
 Jacqueline Buckley Ezzell
 Eileen Kelly Fabry
 Angela Mosca Grande
 Carol Clark Hutelmyer
 Barbara Keane
 Ann Herd Klein
 Pamela Mulrooney MacPherson
 Judy Marra Martelli
 Joan Kane McCarthy
 Maureen H. McCullough, J.D.
 Kathleen Ruetsch Moran
 Barbara Mulgrew
 Kathleen Costello Murphy
 Mary Jane Turner O'Rourke
 Cecilia Gross Rose
 Regina Schnell Shannon
 Lydia F. Sims, M.D.
 Karha Us
 Elizabeth Croke Venditta
 Marianne DiCecco Zollers

Class of 1976 | Participation: 28%

Anna Jurick Alton '93 M.A.
 Joanna Barnaba
 Kathleen A. Bonner
 Daniella M. Bradley
 Michele Modesto Caldwell
 Karen Richardson Clifford
 Mary E. Gillane
 Mary Hooten Green
 Kathleen Gallagher Healey
 Mary E. Jacqueline, M.D. †
 Regina Grugan Kozul
 Sandra Dwyer Maas
 Barbara Zaber Mancini
 Ann Marie Madden Miller
 Nina M. Mulrooney
 Sheila Craig Peregrin
 Anne Regina



Report includes gifts from 7/1/20 to 6/30/21. Every effort has been made to ensure accuracy. We apologize for any errors or omissions made in donor listings. † Indicates deceased

Suzanne Babyar Rothbart, Ph.D.
Maryellen Stemmer
William J. Tuting †

Class of 1977 | Participation: 17%

Crelia Anoaia
Rosemary McDade Barton
Anne Marie Carroll
Sister Carol Anne Couchara, IHM, Ed.D.
Sister Susan Cronin, IHM, Ph.D.
Mary Ann Gabriel
Ann Marie Sammaritano Grande
Diane C. Gryger
Sister Ann Heath, IHM, Ph.D.
Paula Baranoski Jennings '98 M.A.
Barbara Deuble Kelly
Ruth Duffy Krywicki, Ph.D.
Christine Suchnick Lis
Jane Williams Meyer
Sister Annette M. Pelletier, IHM
Sheila McBride Reese
Dorothea Magowan Richardson

Class of 1978 | Participation: 14%

Sister Elizabeth Monica Acri, IHM '10 Psy.D.
Maria H. Alonso, M.D.
Jane Kennedy Connolly
Francine Colangelo Eisenmann
Janet Maginn Garrity
Kathleen Costello Malin
Laureen T. Mann
Sister Lorraine McGrew, IHM
Veronica McLaren
Margaret Erickson Menton
Maria de los Angeles Morales

Class of 1979 | Participation: 13%

Patricia Welsh Balko
Patricia Ann Cerchio
Felicia Puma Dinkel
Anne Marie Dolan Eanes
Cindy Mark Egnotovich
Karen Squire Hagan, M.D.
Patricia Twomey Jennings
Mary Bridget Kane
Maureen O'Neil Kehoe
Frances McCusker Kelly
Bernadette McLaughlin Louden
Carol McCadden Mayer
Mary Johnson Switkay
Sister Catherine M. Ward, IHM '99 M.A.

Class of 1980 | Participation: 12%

Eileen Marie Ross Boyle
Virginia Feller Brosius
Anna May Clark
Carolyn Fagan
Mary Batchelder Fetchko
Mary Erickson Gorski
Darlene Grimes
Clare Jameson
Karen Licorish Keane, D.O.
Janice Gardler Mattera



I support Immaculata because of the opportunity they gave to me as an adult learner while my husband and I were raising four children. They gave me an opportunity I thought I would never have! I am so thankful for my academic experience, which laid the foundation for me to start my own business.

Phyllis Bellopede '82

Economics

Joanne Korpanty Solecki
Jean Tyson White

Class of 1981 | Participation: 13%

Patricia Gavin Barr
Peggy Ann Behm
Kathleen Dentino Brown
Joan Campbell Cleary
Eileen T. Coxson
Mary Jo Tietjen Cree
Teresa Ann Newsom Gresko
Sister M. Joan O'Reilly, IHM '94 M.A.
Bernadette Paul
Sandra Porter
Roberta Regetta
Boreta A. Singleton
Susan Cipollini Skahan

Class of 1982 | Participation: 17%

Ruth Bradley Arata
Phyllis Bellopede
Nancy Beluch-King
Lisa Coroniti
Leslie Ann Culp
Marilyn D'Andrea-Spica, M.D.
Helen Cassidy Dannecker
Joseph P. Darlington, Jr.
Sister Paula Regina Jameson, IHM, Ph.D.
Mary Elizabeth Jones, Ph.D.
Jean Madden
Margaret M. Murphy
Donna A. Neary
Miriam C. O'Malley, D.D.S., D.M.D.

Gloria Martino Satriale, J.D.
Paula Mroz Scarfo
Elizabeth Kempf Townsley

Class of 1983 | Participation: 19%

Anonymous (1)
Brenda Campion Churico
Denise Acker Foedinger
Anne M. Gellrich
Antoinette T. DeLuca Genovese
Diana Rose Hoffman
Patricia Duffy Juliano
Kristin Schilling Lewis
Valerie Dondero Mahfood, Esq.
Karen DeLucia Matweychuk
Joanne M. McDade
Karen Filbey Nocella
Laureen Gallagher Plasha
Tara Mary Quinn
Terri Ruffin
Dora Santarelli
Maria Ann Cicippio Smeykal
Maria Luba Wikarczuk
Barbara Williams Willis
Julianne Kleponis Yarwood

Class of 1984 | Participation: 10%

Nina A. Deats '98 M.A.
Monica Sylvia Fox
Beth Anne Hoffman Hansel
Jane E. Hautanen
Regina Parisien Jean-Claude
Heather B. Koelle
Jo Anne McAdams '87 M.A., '96 Ed.D.
Helen Beatty McClean
Virginia Neumer
JoAnne McAdams Osborn
Maria Giorgi Panella
Kellyanne Smith Patterson '05 M.A.
Denise Charette Rentschler
Barbara Brinton Richards
Kimberly Culp Wait

Class of 1985 | Participation: 19%

Anonymous (1)
Milagros Arana
Maureen McGinn Boettger
Patricia M. Bradbury
Norma Hall Brown
Annemarie Timlin Burke
Cecile Wolgemuth Carr
Kathleen F. Downey
Patricia Buscaglia Flynn
Maribeth Foster
Margaret Mansbery Girten
Lisa Travaglini Kaplan
Renee Bazela Lannutti
Linda P. Malone
Holly Jean Schmuker Mullan
Joann Drennan Phillips
Nancy Rivera Rivera-Angelucci
Lisa Ann Stephenson Skinner

Pamela Russo Sweeney
Marianne Muller Thiemann
Mary Ann Valyo
Dolores E. Wiercinski

Class of 1986 | Participation: 12%

Anonymous (1)
Mary Beth Czaus Bimmerle
Sister Susan Mary Born, IHM
Kathleen McKernan Canum
Marya C. DiTaddeo Dempsey
Carolyn Johnson DiFilippo
Kara Lutz Haggerty '12 M.A.
Margaret Mary Johnson, M.D.
Jacalyn DeVoursney Keller
Christine McClennan Mesaros
Joanne Filicko O'Hara, M.D.
Sheila Johnson Pauley
Maria Terry Remley
Annette Rineer-Tighe, M.A.
Kathleen York Witten

Class of 1987 | Participation: 12%

Carol A. Bradley, M.A.
Mary Theresa Brown, M.A.
Catherine Eckenrode Coby
Charles Coxson
Karen Parke D'Eramo
Judith Graham Jester Durante
Judith Jungkurth Gladden
Rosalie Hieronimus Gross
Sara D. Harris
Joyce Hiemenz
Judith A. Hoffman
Lisa Wakeham Loss
Kathy Taglianetti McCrea
Mary I. McDonald
Catherine M. Pipan, M.D.
Helene Francis Reynolds
Susan Coffey Zern, M.D.

Class of 1988 | Participation: 8%

Gia Croce, V.M.D.
Maureen Dupras Curry
Stephanie Wham D'Amico
Elizabeth Dunn Deveney
Nora P. Gammon
Maryanne Hartman Cunningham, '90 M.A.
Lorraine Wysocki Johns
Kathleen Hayes Lennon
Sherri Clark Long
Maria Castaldi McLaughlin
M. Noelle Meltsch
Mary Beth McGrath Westmoreland

Class of 1989 | Participation: 10%

Twanda L. Brown
Anne Donnellan Brown
Mary Cullinan Coakley, M.A.
Mary Jane Culbertson, M.A.
Michelle Oslar Davis
Linda Stankus DeSantis '12 M.A.

Alisa Devlin, M.D.
Karen Ruth Finley
Bernadette A. Flaherty
Janine Hoffman, Esq.
Margaret Mary McHugh
Sister Rose Mulligan, IHM, Ph.D.
Dolores A. Narcisi '03 M.A.
Sister Jeannine O'Kane, IHM, M.A., Ph.D.
Theresa Major Payton
Karen Ritchey
Christine Dolan Rolince
Mariellyn Meehan Scola, M.A.
James W. Supplee, M.A. '03 Psy.D.
Jennifer A. Yorke

Class of 1990 | Participation: 12%

Stephen D. Armstrong '06
Mary Ann Malinyak Burcin
Maureen E. Heffernan Clark
Yolanda Cooper
Kathryn Donnelly
Elizabeth Gotshall Faunce, Ph.D.
Kelly Kilpatrick Glaum
Susan Kane Hally
Ann Matusiak Johann
Amy Pontzer Jones
Sister Marianne Therese Lallone, IHM
Mary Ann Lang
Jacqueline Dunleavy Longo
Kathleen M. Packert
Carol Reber, M.A. †
Karin Tygielski Scott
Maureen Matthews Scott
Suzanne Taft Sheppard
Jean Wagoner Shingle, Ph.D.
Krista Ann Weisser Showers
B. Beryl Simonetti, M.A.
Kathleen Freney Smith
Christine Williams

Class of 1991 | Participation: 5%

Aileen Devine Campbell
Anita M. Cellucci, M.A.
Maureen DeLorenzo
Mary Kean Dougherty
Eleanor A. Fogarty
Nicole Marie Lacoste Folks
Patricia Ann Knecht, Ph.D.
Kristy Rupp Legenstein
Kelly Ann Philbin '07 M.A.
Lori Heffelfinger Spoor
Carol E. Sweeney, M.A.
Patricia C. Washburn, M.A.

Class of 1992 | Participation: 5%

Brian G. Becker
Stacey Motznik Bibbo
Patricia Canterino '12 M.A.
Sharon Dula-Henik
Maureen Boyle Gearing Landosky
Helen Patricia Masino-Falguera
Francis Xavier Milles, M.A.

Mary Ann Morroney
Eunice Timoney Ravenna
Mary G. Wilson

Class of 1993 | Participation: 5%

Linda Francis Burke, M.A.
Deborah Hutter Goss, M.D.
Bonita Lynnette Lea
Dorothy Hutter Lobo, Ph.D.
Carol L. O'Brien, M.A.
Kathleen Dean Rizzo
Beth Scheetz Charnichko, M.A.
Dawn Simpson Foster
Jennifer Viggiano Smith
Carol Pino Sprang, M.A.
Sandra Dorazio Young, M.A.

Class of 1994 | Participation: 6%

Anonymous (1)
Dorothy M. Burke
Carol E. Cormany
Claire T. Daniels
Shelly Burd Espenshade
Allyson Gardner
Judith Mack Greeley '14 M.A.
Lesley Kuemmerle Hammer
John Jameson '97 M.A.
Maryann King



Why I support Immaculata: Because someone before me gave, I received a scholarship. Immaculata is more than my alma mater; it is home, it is where I grew up and met some of the most important people in my life. Gaining not just the knowledge that led to my career, but also lifelong friendships that are like family. I am grateful I am able to support Immaculata with personally meaningful support of time and contributions.

Kathy Freney Smith '90

Nutrition/Dietetics

Report includes gifts from 7/1/20 to 6/30/21. Every effort has been made to ensure accuracy. We apologize for any errors or omissions made in donor listings. † Indicates deceased

Diane L. Lee, M.A., '00 Psy.D.
Heather Smith Maiden, M.A.
Jennifer Bruce Nanni
Donna Marie Waters
Joanne White, M.A.
Gina DeMarco Whitsel

Class of 1995 | Participation: 4%

Kelly Taylor Davis
Natalie Fisher, M.A.
Anne B. Gearing
Janet Lien Glennon
Mary Elizabeth Hoffman
Dianne Anthony Manges
Joseph F. Reilly, M.A.
Sister Monica Therese Sicilia, IHM '04 M.A.
Bridget L. Walton
Amy L. Zimmerman

Class of 1996 | Participation: 6%

Paloma Santiago Adorno
Ashley M. Burslem
Theresa J. Crossan, M.A.
Heather Lovelette Dotchel
Sindi Acuna Duricko
Bridget Haines-Frank
Kathleen Schaller Hohenadel
Rebecca Kasper Shemeley
Jean Lonto Maberry
Kathleen A. Martin
Beth Ann Mull '02 Psy.D.
Lorraine Panaccio

Class of 1997 | Participation: 4%

Christine McGuinness Barnhart
Kristina White Bicking
Ann O. Blomquist, Ed.D.
Gabriella Campese
Peter Collins, M.A.
Maureen Donahue Fogerty
Jennifer Carpenter Livingston
Eileen Knox McDonald, M.A.
Eileen Helm Weaver, Ed.D.

Class of 1998 | Participation: 1%

Roseanna Hughes Anderson
Ann Marie Lahey
Denise E. Warfel
Kathleen Connor Wyatt

Class of 1999 | Participation: 4%

Kathie Estock, Ed.D.
Julia C. Forczek
Miriam E. Franco, Psy.D.
Phyllis Gatta
Gemma C. Geigert, Ed.D.
Christine A. Giardini, M.A.
Regina Gordon, Ed.D.
Virginia E. Guyer
Michael G. Janes
Patrick F. Jones
Nicole Bertolini Martin
Kathleen McDevitt

Judith E. Riley-Lowe
Lee L. Ritsick '01 M.A.
Alma Seidel '01 M.A.
Barbara Jo Spellman, M.A.
Susan Lee Trach Gonya, M.A.

Class of 2000 | Participation: 3%

Ursula K. Fachin
Melissa Smola George, D.O.
Karen Kropp
Anne E. Lovell
Maria Stofanakova McCarthy
Clair Arocho Papieredin
Robert S. Shaw, Psy.D.
Phyllis R. Simmons, Ed.D.
Joseph M. Waters, Ed.D.
LeeAnn Zeroth, Ed.D.

Class of 2001 | Participation: 3%

Anonymous (2)
Cathleen Novak Addison
Lucretia L. DeCecco '04 M.A.
Tina Floyd
Judy A. Franco
Elizabeth E. Ginty
Catherine S. Lombardi
Mary A. O'Brien
Joseph J. O'Brien, Ed.D.
Rebecca Rodgers
Sandra J. Ruth
Lisa A. Schultz
Tracy S. Shank, Ed.D.
Sheila F. Wetzel

Class of 2002 | Participation: 3%

Kathryn M. Campbell
Maria Marzen Collins
Lisa A. Dougherty, Esq.
Sister Laura Teresa Downing, IHM
Tracey Dwyer Fox
Melissa Suszynski Green
Maria Lazorik Haber
Joyce Vottima Jueull, Ed.D.
Roger J. Jones
Steady Moono, Ed.D.
Renee F. Petner
M. Sidney Pinnie, M.A.
April Barra Scepanski
Marilyn Manak Sheils
Robert J. Talnack
Kathleen M. Theilacker '07 M.A.

Class of 2003 | Participation: 2%

Cynthia Calla Christenson, Psy.D.
Theresa Connelly
Jennifer Pepersack Corbin
Salvatore DiNenna, Ed.D.
Lynne Dorfman, Ed.D.
Laura M. Grassia '05 M.A.
Susan Koehler, M.A.
Suzanne Trotter McKeever, M.A.
Christine Fleming Robinson '04 M.A.
Joan Gardier Roe

Mary Lou Schweitzer, Psy.D.
Duane Stanton '14 M.S.N.
Lisa Witulski

Class of 2004 | Participation: 2%

JoAnn C. Carlin
Susan W. Dennen, M.A.
Kelly Ann Doyle, Ed.D.
Sara McDermott Jain
Joanne A. McKee
Maura K. Meeder
Kathleen M. Palmer
Patricia Poserina '08 M.S.N.
Elizabeth Brothers Sillman, M.A.
Maryanne Smart, M.A.
Mark J. Snyder
Maureen S. Spitz
Alanna L. Werner '10

Class of 2005 | Participation: 2%

Anonymous (1)
Mary Louise Borgmann
John E. Dowling, M.A., '20 Ed.D.
Jessica Bunsick Downing
Alice A. Farrell '12 M.S.N.
Ellen M. Gacomis, Ed.D.
Heidi J. Harrison '19 M.S.
Lori L. De Rea Kolb '09 M.A.
Fay M. Stappen Linkiewicz
Lesley Maurer
Megan L. Moyer
Daniel R. Trimmer, Ed.D.
Jaime Lynn Williams Troutman

Class of 2006 | Participation: 2%

Anonymous (1)
Dorothea Greto
Heather J. Gwin
Douglas K. Mountz, Ed.D.
Sandra Rollison, M.A.
Theresa M. Weidenbaugh, Ed.D.
Joshua A. Werner
Sarah R. Wolfe '10 M.A.

Class of 2007 | Participation: 2%

Anonymous (1)
Jeannette L. Barr
Gwen Menton Cantarera
Thomas C. Castner, Ed.D.
Mark A. Kadel, M.A.
Katherine Rose Keenan
Conal McBride
Therese M. McElwee
Dianne F. Rynnion
Deborah J. Snavelly
Suzanne C. Steczak

Class of 2008 | Participation: 2%

Keri E. Blouch
Bridget Doyle Burlage
Maria Elena Capaldi
Desiree Eltringham, D.D.S.
Frank L. Garritano, Ed.D.



I support Immaculata University because earning my doctorate from Immaculata provided me with the opportunity to learn from highly respected and experienced professionals in my field. As an alumna, I continue to support Immaculata University so that future generations of students may also fulfill their dreams of earning a college degree from a highly respected university.

Jeanne Dagna '12 Ed.D.

Education Administration

Elizabeth S. Gladulich
Elizabeth A. Lisowski '13 M.S.N.
Sara M. Pletcher
Lauren Isselmann Stoltzfus '14 M.S.N.
Sara E. Wilson

Class of 2009 | Participation: 2%

G. Scott Cornell
Lorraine F. Entrikin
Patrick Frevert
Claire D. Giambi
Kristina Pengler Goetz
Barbara J. Kincade
James Malinowski
Barbara A. Perella Knezo
Jeffrey D. Rollison, Ed.D.
Angelina Sabatini
Joseph G. Springer
Mary Woods Strobel
Lydia S. Szyjka, M.A.
Alexander Hughes Taylor
Sarah McClean Waterman
Timothy P. Williams, Ed.D.

Class of 2010 | Participation: 1%

Anonymous (1)
Cynthia M. Barrar, M.A.
Carol Rappucci Cary, Ed.D.
Crystal Woessner DiGiacomo
Renae M. Padamonsky Ditty
Erin Rogers Malinowski
Helen K. Martino
Paul Robert McAndrew '15 M.A.
Sergei P. Nuisl
Peter C. Scheponik, Ed.D.
Michael Ventola
David P. Wuestner, Ed.D.

Class of 2011 | Participation: 2%

Joan Angiulo
Daniel C. Arteglier
Alexandra Faljean Currie
Jeffrey Joseph DiGiacomo
Brittany E. Constant Gagliardi
Andrew M. Halstead '13 M.A.
Sara G. Holleran
Julia C. Inslee, M.A.
Elizabeth S. Rosinski
Caitlin A. Stichter
Elizabeth M. Strauch
Thomas R. Swink
Cristina M. Tansey, M.S.N., '21 Ed.D.

Class of 2012 | Participation: 1%

Rev. Kyle M. Adamczyk
Debra Lynn Beam
Leslie A. Bokoski
Georgann Cindrich
Justin M. Cusick
Jeanne M. Dagna, Ed.D.
Maureen Liszewski
Kevin W. Moore
Ashley McGraw Nowak
Brian J. Nowak
Elizabeth Ann Weber, Ed.D.

Class of 2013 | Participation: 1%

Edward A. Bettler, Jr.
Ann Stabile DePrisco
Denise R. Fuhrman, Ed.D.
Richard K. Girkin
Daniel R. Klodarska
Angela M. Medley '19 M.S.N.
Greta Lynne Rech, M.A.
David Joseph Renaut, Ed.D.
Kelly A. Woodward
Meiru Zhao

Class of 2014 | Participation: 1%

Daniel Joseph Burns
Sister Mary Josephine Ely, IHM, M.A.
Moire S. Smoker Gallagher
Mary Beth Hellberg
Anthonisus Teah Jappah
Lynn D. Skalski

Gabrielle Capaldi Stringham
Cameron Stringham

Class of 2015 | Participation: 1%

Margaret A. Carroll
Carol C. Kelsall, Ed.D.
Allison N. Olock
Marcia A. Parris, Ed.D.
Loretta Pigeon
Anita M. Sablich
Colleen L. Stanton
Nicholas W. Yelovich
John Charles Zurek, Jr.

Class of 2016 | Participation: 1%

Kpehe Carter
Colleen M. Hunt
Mark J. McFadden, Ed.D.
Pamela M. Myers
David John Tschachler, M.A.

Class of 2017 | Participation: 1%

Gina Ayers
Stephanie DeSimone Corbin, Ed.D.
Jonathan Fillion
Paula Kahley
Laurence S. Messler
Caitlin Osborn
Lucia Grace Pasternak
George Michael Schwartz, Ed.D.
Katelyn Grace Starr '21 M.A.

Class of 2018 | Participation: 1%

Kathleen Elizabeth Borginis, Ed.D.
Jacqueline M. D'Amico
Kristen Jade Goldstein
Francesca M. Smorada
Nicole Elizabeth Thomas

Class of 2019 | Participation: 2%

Alessandra Eva Calderone
Victor Manuel Colon
Sydney Lauren Dixon
Lena Cecilia Frennborn, Ed.D.
Russell George Kulp, Ed.D.
Morgan E. McDonough
Merilyn Mofor
Eileen Eckhart Strauch, Ed.D.

Class of 2020 | Participation: 2%

Miriam Sylvaline Anyanwu
Melissa Boyd
Clinton James Bradley
John Mastrippolito
Isabella G. Romano
Dominic Michael Zengel

Students

Sarah Hackman
Steven Bruce Lytle, Jr.

Report includes gifts from 7/1/20 to 6/30/21. Every effort has been made to ensure accuracy. We apologize for any errors or omissions made in donor listings. † Indicates deceased

MEMORIAL GIFTS

The following donors in italics made gifts in memory of those whose names appear in bold during the 2020–2021 fiscal year.

Dr. Gunther Abraham

Kenneth B. Tenley

Gloria Zampol Von Ahnen '45

Cecelia L. Wade

Marjorie Gildea Alford '38

Elizabeth LeDoux

Sister Trinita Marie Amorosi, IHM

Patricia C. Washburn '91 M.A.

Jean Roney Yoder '60

Jerry D. Anderson

Kathryn Kroeger Anderson '70

Ralph Beatty and Nancy Beatty

Helen Beatty McClean '84

Ann F. Behm

Peggy Ann Behm '81

Patricia Ann Cerchio '79

Berkley F. Cone

Karen Parke D'Eramo '87

Tina Hernandez

Kathleen McNicholas

Maria Giorgi Panella '84

Mary Beth Roth

David Beideman

Bill Colburn and Jane B. Colburn

Jane Francis

*Charles Garress and friends at Cliffs,
formerly the Lukens Steel Company*

Shannon E. Graham

Lisa Plumley

John Quigley and Suzanne Quigley

Barbara Mullaney Bresnan '49

Alice P. Boyle '49

Joan Martinelli Brunner '52

Anne Marie L. Brunner

Sister Mary Consuela Callaghan, IHM

Maureen H. McCullough '75, J.D.

Rita Ryan Harkins Callahan '44

Michael D. Harkins and Eileen M. Harkins

Sister Mary Canavan, IHM

Marguerite Canavan Gaffney '60

Donna M. Cannon '87

Karen Parke D'Eramo '87

Geraldine Canterino

Eunice Timoney Ravenna '92

Sister Mary Jean Cavanaugh, IHM

Margaret O'Donnell Donohue '73

Deceased Members of the Class of 1968

Margaret Anne Stein '68

Deceased Members of the Class of 1970

Ellen Hayes Cerritelli '70

Patricia McGarry Kraeer '70

Epiphany Pantaleo Collins '64

Marlene Lambiase Auxer '64

Jean Horan Cunningham '64

Margaret Connolly Federico '64

Susan Donohue Gallagher '64

Joanne Rossi Kearney '64

Anne Kilkenny Lavin '64

Margaret Hogan Manning '64

Rita Barr Porreca Ward '64

Sister Helen Patricia Corcoran, IHM

Elinor Schoppet '60, Ph.D. †

James Cronin and Marjorie Cronin

Sister Susan Cronin, IHM '77, Ph.D.

Edith McGarry Cunnane '64

James J. Cunnane

Patricia Aylward Daly '50

Richard H. Daly

Helen Margaret Daylor '52

Carol Furjanic

Marlene A. Popnik

Jeanne M. Purtell

Elizabeth K. Rodgers

Sister Regina Mauricia DeFeo, IHM

Karen DeLucia Matweychuk '83

Sister Virginia Assumpta McNabb, IHM

Gabrielle Iorio Devine '48

Joanne C. Devine

Michele A. DiGiovanni '99

Suzanne Trotter McKeever '03 M.A.

Alberta F. Donlan '60

Antoinette Iaquinto Makowski '60

Bernadette Dooley '69

Kathryn Hoover Alexander '69

Helen McGinty Downey '51

Kathleen F. Downey '85

Charlotte Drummond '69

Alice Duff Foreman '69

Thomas Dudley

Edward F. Dudley and Georgia Dudley

Mary E. Duffy

Ruth Duffy Krywicki '77, Ph.D.

Mary Dugan, Ph.D.

Anonymous

Joseph D. Smola and Melanie Smola

Sister Loretta Mary Enderle, IHM

James Jacobs and Joanne Jacobs

Catherine Luongo Kraus '70

Joanne Filicko O'Hara '86, M.D.

Mary Pat McGovern Evans '49

George T. Evans

Sister Maria Josita Feighan, IHM

Jennifer Carpenter Livingston '97

Lorraine Gable Finelli '78, D.O.

Beverly A. Augustine

Stephanie Beisner

Gracemarie L. Finelli

Craig C. Garretson and Gina Garretson

Janet Maginn Garrity '78

Patricia Hopkins

Donn and Kathy Johnston

Family Charitable Fund

Benjamin Jones and Karen A. Jones

Denise O. Melito

Marianne M. Mesure

John Michel and Jane Finkle

Donna M. Osinski



Charles Quinn and Betsy Quinn

Suzanne Babyar Rothbart '76, Ph.D.

Grant Silow

Elizabeth Ann Kempf Townsley '82

Mary Dempsey Flanagan '39

Norajean Mary Flanagan

William J. Flanagan

Sister Bernadette Maria Flannery, IHM

Nancy T. Caldarola '73, Ph.D.

Corrie V. Foster, Esq.

Dawn Simpson Foster '93

Robert J. Foster and Mary Foster

Maribeth Foster '85

Sister Regina Foy, IHM

Lori De Rea Kolb '05, '09 M.A.

John E. Mueller

Cameron Stringham '14

Madeline Cicione Gardner '58

Francis J. Gardner

Paul W. Geiger, M.D.

Kathryn M. Slaats

Mary Wyatt Grieco

Kathleen Connor Wyatt '98

Joan Looby Harding '63

Rita E. Collins '63

Mary Ellen Looby Goodwin '70

Joanne McKee '63

Mary Frances Healey Hartdorn '79

Patricia Ann Cerchio '79

Anne Marie Dolan Eanes '79

Estate of Mary F. Healey

Maj. Frank G. Hartleroad, ARNG Ret.

Allen Aden and Marla Aden

Douglas Ambler and Carolyn L. Ambler

Robert Bowers and Gail A. Bowers

Lisa A. Brown

Barbara Byk

Frank Duffy and Mary Anne Duffy

Joan Hartleroad Fisher '71

Miriam E. Franco '99 Psy.D.

Anne Gearing '95

Mary Anne Bensinger Gearing '63

Rita Bensinger Hartleroad '67

Kathleen Gallagher Healey '76

and Joseph Healey

Kenneth M. Hildebeitel and

Carol Hildebeitel

Justine Horchor

Alan Jeffery and Margaret C. Jeffery

Kathleen Cooper Kulesza '67 and

Thomas Kulesza

Maureen Boyle Gearing Landosky '92

and Christopher D. Landosky

Marguerite Ranucci

Thomas Ryan

Susan Sturm Vicario '67

Mary Murphy Haslam '70

Patricia Maguire Morris '70

Sister Marian William Hoben, IHM, '55, Ph.D.

Alumni Association Board of Governors

Sister Marie Roseanne Bonfini, IHM '57

Joseph P. Darlington, Jr. '82

Judith Graham Jester Durante '87

Anne Marie Dolan Eanes '79

Mollie Lichty Fahnestock '74

Dotsy Aires Fitts '65

Colleen McDonald Gieniec '73

Donna Golanoski Gorka '71

Sara D. Harris '87

Geraldine Coletta Ivy '72

Kathleen Cooper Kulesza '67

Antoinette Iaquinto Makowski '60

Linda P. Malone '85

Richard L. Manser

Judy Marra Martelli '75

Anne Marie Phillips Martin '67

Sister Virginia Assumpta McNabb, IHM

Barbara Mulgrew '75

Judith Heim O'Dell '70

Suzanne Babyar Rothbart '76, Ph.D.

Ann Marie Conway Six '70

Sally Tamburello Winterton '68, Ed.D.

Joanne Vitello Zappile '68

Barbara Chambers Holt '60

John J. Chambers, Jr.

Kathleen Mendte Logan '60

Ellen Meisner McDonnell '60

Marita McManus '60

Richard A. Ogorek and Diane H. Ogorek

Dana M. Rafferty

Eleanor J. Smith-Helker

Theresa A. Strum

Jean Roney Yoder '60

Ann Hughes '58

Alice Antonelli

Edward Isselmann and Marie Isselmann

Sister M. Carroll Isselmann, IHM '72 Ed.D.

Albert V. Jeuell

Joyce Vottima Jeuell '02 Ed.D.

Alexander W. Jones and Mary P. Jones

Mary Elizabeth Jones '82, Ph.D.

Michael P. Jordan

Mary K. Jordan '66, Ph.D.

Judith Plowucha Hegarty '66

Gerald F. Hegarty

Ann Louise Morris Gallagher Juló '44

Patricia A. Gallagher

Kathleen Gildea Kelley '41

Clark Art Institute

Lynn Cochrane

Antoinette C. Conrad

Anthony Graefe

Charles Katter

Joseph Katter

Stephen Katter

Ellen Katter

Elizabeth LeDoux

Susan TePas

Suzanne Winter

Dorothy Walsh Kelly '49

Margaret A. Carroll '15

Vincent D'Imperio

Eileen Edgington

Denise O'Neill Johnston

Kevin J. Kelly and Anne D. Kelly

Anne Marie Kelly

Karen DeLucia Matweychuk '83

Paul O'Neill and Joan B. O'Neill

Judith A. Raam

Patricia O'Neill Scott

Mary E. Walsh

Rose Marie Wells '49

Edward Kelly

Vincent D'Imperio

Agnes F. Kleschick '49

Joseph A. Gorman

Brian Lang

Mary Ann Lang '90

Ronald Lang

Mary Ann Lang '90

Marianne Scott Langan '70

Patricia Maguire Morris '70

Eileen Barbour Leardi '65

Robert Leardi, M.D.

Stephanie Lightner '70

Kathryn Mendelsohn

Linda Becker Long '65

Eleanor Gualtiere Lashley '65

Dorothea T. Lonto

Jean M. Lonto Maberry '96

Ann M. Lowell '60

Bernard E. Lowell

Sister Mary Donatus Lynch, IHM

S

My mother, Dorothy Griesser Maginn '43, chemistry student, would have loved to have had a digital spectrophotometer in her lab at Immaculata. The next best thing would be to help provide the best equipment to today's students. This donation is to honor my mom.

Janet Maginn Garrity '78

Economics

James R. Philbin, Sr. and Katherine M. Philbin

Kelly Ann Philbin '91, '07 M.A.

Mary Elizabeth Marso Pigliacelli '74

Maureen E. Hearing Carey '74

Joseph F. Pomrunk, III

Grace Arena Pomrunk '67

Charleen Hennessy Punk '50

John W. Punk

Theresa Quattrone '70

Mary Magner Burke '70

Helen Cattalo Halpin '70

Loreta Chirico Perthes '70

Lillian Strohlein Riley '56

Carl C. Riley

Patricia A. Ronan '68

Rosemary Ronan '60

Winifred O'Meara Rupp '52

Martha A. Stiber

John Sabato

Alana Gullotta DePrisco '68

Evelyn Marie Sandorella

Theresa Major Payton '89

Elizabeth Schoppe

Virginia C. Pelegimas

Elinor Schoppet '60, Ph.D.

Sheila Halpern

Claire Schultz

Karen D'Agusto '74, Esq.

Johanna C. Sisca

Sara M. Pletcher '08

Steven Skinner

Annemarie Timlin Burke '85

Sister Marlene Skrobak, R.S.M.

Carol A. Pino Sprang, M.A. '93

Kathleen McMahon Stepanowski '85

Nancy Rivera Angelucci '85

Milagros Arana '85

Maureen McGinn Boettger '85

Patricia M. Bradbury '85

Norma C. Hall Brown '85

Annemarie Timlin Burke '85

Cecile Wolgemuth Carr '85

Cheryl Annette Culmer '85

Denise Janssen Davidson '85

Kathleen F. Downey '85

Maribeth Foster '85

Margaret Mansbery Girten '85

Lisa Travaglini Kaplan '85

Renee Bazela Lannutti '85

Joann Drennan Phillips '85

Lisa Ann Stephenson Skinner '85

Pamela J. Russo Sweeney '85

Marianne C. Muller Thiemann '85

Dolores E. Wiercinski '85

George Stoerlein

Antoinette Stoerlein Delaney '59, Ph.D.

Joseph A. Strauch

Eileen Eckhart Strauch '19 Ed.D.

Carina Gil Sumser '72

Graciela Gil Donovan O'Donnell '69

Lenore Teter '71, M.D.

Kathleen Wynne Webb '71

Mary Consalvi Thomas '41

Marie Thomas Fortunato '71

Barbara C. Travaglini '91

Gunard Berry Carlson

Memorial Foundation, Inc.

Kathleen Donnelly Trench '58

Joseph J. Trench

Karen Valyo

Mary Ann Valyo '85

Grace Burns Vincent '31

Mary Lee Theresa Bradley '63

Paul A. Wilson, Jr.

Susan W. Arnold

HONOR GIFTS

The following donors in italics made gifts in honor of those whose names appear in bold during the 2020–2021 fiscal year.

Art Department

Steven Bruce Lytle, Jr. '22

Sister Marie Roseanne Bonfini, IHM '57

Kathleen Mulhern Clark '70

Sister Marie Lorraine Bruno, IHM '51

Margaret Erickson Menton '78

Sister Anne Marie Burton, IHM '71, Ed.D.

Mollie Lichty Fahnestock '74

Ian Campbell '23

Steven Campbell and Lisa Campbell

Class of 1968

Susan Sackett Kratzinger '68

Class of 1985

Pamela Russo Sweeney '85

Sister Helen Patricia Corcoran, IHM †

Mary Ann Perlouise Manlio '59

English Department

Maria Marzen Collins '02

Steven Bruce Lytle, Jr. '22

Faculty and Staff at Immaculata University

Joanne Korpanty Solecki '80

Sister Regina Edward Flanigan, IHM

Barbara M. Flanigan '68

Robert J. Foster and Mary Foster

Maribeth Foster '85

Sister Regina Foy, IHM †

Laura M. Grassia '03, '05 M.A.

Sister Ann Immaculata Gallagher, IHM '55, Ph.D.

JoAnn M. Paslowsky '73

Jack Goodrich and Lois Goodrich

Kimberly C. McGowan

Sister Marian David Habina, IHM

Margaret M. O'Donnell Donohue '73

Sister Ann Heath, IHM '77, Ph.D.

Joyce Alexander, Ph.D.

History Department

Steven Bruce Lytle, Jr. '22

Joseph Hoffman and Joan Hoffman

Judith A. Hoffman '87

Ann Hughes '58 †

Alice Antonelli

Sister Agnes Hughes, IHM '65, Ph.D.

Anonymous

Marie Lopinto Dacey '69, Ed.D.

Immaculata's 100th Anniversary

Karen DeLucia Matweychuk '83

IU Gaming Club

Steven Bruce Lytle, Jr. '22

Esperanza Jostad

Thomas P. Jostad

Marijo Lucas, Ph.D.

Anonymous

Eileen Lynch

Kathleen Holmes

Roberta A. Imbesi

R. Terence Lynch

Rev. Kevin P. McCabe

Steven Bruce Lytle, Jr. '22

Joan McCrea

Dianne F. Runnion '07

Sister Mary of Lourdes McDevitt, IHM †

Margaret Rademaker Bielen '58

Margaret Mary McHugh '89

Henry J. McHugh

James J. Mooney †

Maria Marzen Collins '02

Jessica A. Morrell '21

Kevin W. Moore '12

Sister M. Ann Thomas Mullen, IHM

Louise Antonucci Pascale '63

Dianne Majer Mundy '64

Robert Mundy

Missy B. Norcini '71

Karen G. Gill

Marilyn Rothberg

Robert W. Wilkey

Barbara Murphy Zupko '68

Sister Jeannine O'Kane, IHM '89

M.A., Ph.D.

Anonymous

Sister Rita O'Leary, IHM †

Eleanor A. Fogarty '91

John T. Fogarty

Margaret Erickson Menton '78

Ugo Passalacqua and Diva D. Passalacqua

Rita Passalacqua Acri '74

Stephen F. Payer and Elizabeth C. Payer

Elizabeth Payer Pedone '69

Sister Cecile Marie Phelan, IHM '50 †

Laura M. Grassia '03, '05 M.A.

Sara M. Pletcher '08

Marianina Pletcher

Political Science Department

Steven Bruce Lytle, Jr. '22

Sister Regina Agnese Purcell, IHM †

Clare Jameson '80

Colleen Marie Ryan '80

Mary Erickson Gorski '80

Sisters, Servants of the Immaculate Heart of Mary

Maria Marzen Collins '02

Margaret Mansbery Girten '85

Eli Vezzosi and Evangeline Vezzosi

Maureen McFadden

Birthdays of Mimi Draper Walsh '63

and Frank E. Walsh, Jr.

Ted Walsh

Cecilia Wormley '90

Ann Matusiak Johann '90

Jed Yalof, Psy.D.

Anonymous

FACULTY AND STAFF

The following faculty, staff and administration of Immaculata University generously supported the University with charitable gifts during the 2020–2021 fiscal year.

Sister Elizabeth Monica Acri, IHM '78, '10 Psy.D.

Susan W. Arnold

Debra Lynn Beam '12

Leslie A. Bokoski '12

Mary Kate Boland

Martha W. Borraccini

Jeanne Bortulin

Lisa A. Brown

Sister Anne Marie Burton, IHM '71, Ed.D.

Sister Monica Joseph Cadden, IHM '70

Patricia Canterino '92, '12 M.A.

Sister Carol Anne Couchara, IHM '77, Ed.D.

Sister Susan Cronin, IHM '77, Ph.D.

Janelle R. Cronmiller

Dennis P. Dougherty

Sister Kathleen C. Doult, IHM, D.M.A.

Sister Laura Teresa Downing, IHM '02

Darcey Doyle

Kelly Ann Doyle '04 Ed.D.

Elizabeth Gotshall Faunce '90, Ph.D.

Tina Floyd '01

Bruce W. Friedman

Barbara A. Gallagher

Joseph Gehring

Elizabeth E. Ginty '01

Sister Claudine Hagerty, IHM

Heidi J. Harrison '05, '19 M.S.

Sister Ann Heath, IHM '77, Ph.D.

Sister Mary Henrich, IHM '72

Sister M. Carroll Isselemann, IHM '72 Ed.D.

Sister Paula Regina Jameson, IHM '82, Ph.D.

Kerry S. Jones

Mary Elizabeth Jones '82, Ph.D.

Sister Marie Hubert Kealy, IHM '57, Ph.D.

Barbara Lettiere '72

Sister Angela M. Mastrangelo, IHM '71,

'95 M.A.

Karen DeLucia Matweychuk '83

Mark J. McFadden '16 Ed.D.

Sister Lorraine McGrew, IHM '78

Laurence S. Messler '17

Sister Denise Mollica, IHM '69

Sister Rose Mulligan, IHM '89, Ph.D.

Sister Jeannine O'Kane, IHM '89 M.A., Ph.D.

David Parkyn, Ph.D.

Marcia A. Parris '15 Ed.D.

Lucia Grace Pasternak '17

Sister Annette M. Pelletier, IHM '77

Bobbijo Grillo Pinnelli, Ed.D.

Jeffrey D. Rollison '09 Ed.D.

Sandra Rollison '06 M.A.

Sister Alice Schaebler, IHM '69

George Michael Schwartz '17 Ed.D.

Jean Wagoner Shingle '90, Ph.D.

Sister Monica Therese Sicilia, IHM '95,

'04 M.A.

Robin T. Smith

Lydia S. Szyjka '09 M.A.

Carol B. Tafuro



Blanche Bauman
Stephanie Beisner
Lee Bettenhausen
Gail A. Bowers
Ellen Brown
Anne Marie Brunner
Marguerite M. Buck
Barbara Byk
Maryellen Caldwell
Stephen Campitelli
William H. Carr
Andrew J. Carter
Dolores Ferraro Cascarino
John J. Chambers, Jr.
Stephen D. Chopnick
Silvio F. Cifa
Clark Art Institute
Thomas P. Cleary
Lynn Cochrane
Jane B. Colburn
Berkley F. Cone
Antoinette C. Conrad
Christa E. Converse
Theresa Cook
James J. Cunnane
Robert J. Czukoski
Richard H. Daly
Grant Davis
Barry DeSantis
Joanne C. Devine
Vincent D'Imperio
Albert Doering, III
Stella Doherty †
Ray Dombroski
Frank Duffy
Eileen Edgington
Napoleon Elortegui
George T. Evans
Kenneth W. Fein
Gracemarie L. Finelli
Jane Finkle
Norajean Mary Flanagan
William J. Flanagan
Amy Flynn

Thomas J. Ford, Ed.D. and Maureen Ford
Jane Francis
R. Robert Frazier, D.M.A.
Carol Furjanic
Alfonse J. Gabriele
Patricia A. Gallagher
Francis J. Gardner
Charles Garress
Craig C. Garretson
Karen G. Gill
Joseph Gniac
Edmund O. Goll and Louise Goll
Joseph A. Gorman
Lawrence Gould
Anthony Graefe
Shannon E. Graham
Cecile J. Grantham
Judith J. Greenamyer
Frank Haarlander
Perry L. Habecker V.M.D.
Patrice A. Haines
Ralph Hall and Cinda G. Hall
Sheila Halpern
Doreen M. Heath
Gerald F. Hegarty
Tina Hernandez
Rev. Gregory J. Hickey
Kenneth M. Hildebeitel
Howard E. Hoctor
Margaret H. Hoffman
Kathleen Holmes
Patricia Hopkins
Roberta A. Imbesi
Elaine Jacobs
Margaret C. Jeffery
Eric R. Johnson
Denise O'Neill Johnston
Kathy Johnston
Karen A. Jones
Thomas P. Jostad
Charles Katter
Ellen Katter
Joseph Katter
Stephen Katter

Robert A. Kearn, Sr.
Anne D. Kelly
Anne Marie Kelly
George Kelly
Ross Kershey
Cheryl L. Kinney
Cynthia G. Knisley
John M. Kramer, Ph.D.
Dale Z. Krauchick
Joseph Krupp
Margaret Lacey, Ph.D.
Elizabeth LeDoux
Madeleine Long, M.D.
Joseph Lorini
Bernard E. Lowell
Earlin Lutz, Ph.D. and Marilyn Lutz
R. Terence Lynch
Maureen Manousos
Richard L. Manser
Leonard R. Martin
Phil Mayer
Marina McCarthy
Maureen McFadden
Kimberly McGowan
Henry J. McHugh
Sister Virginia Assumpta McNabb, IHM
Kathleen McNicholas
Denise O. Melito
Gerald Mello
Christine E. Mellon
Kathryn Mendelsohn
Marianne M. Measure
Leon Miamidian
Gary Michelson
Barbara Louise Miller
Lawrence C. Miller, D.M.D.
Karen S. Milles
Charlene Millheim
Anthony Montagnolo
Anna Montejo
Nicholas R. Motter
John E. Mueller
Robert Mundy
Francis Olbrych

Joan B. O'Neill
Leonard Orzechowski
Donna M. Osinski
Joseph L. Parrillo
Christine Parsons Bendinelli
Donald F. Parsons, Jr., J.D. and
Ethel F. Parsons
Elizabeth Parsons Forsythe
Gerald J. Parsons and Eleanor Parsons
Leo D. Parsons and Maryanne M. Parsons
Richard M. Parsons and Claudia Parsons
Robert L. Parsons, D.O. and
Marilyn A. Parsons
Erach Patel
Virginia C. Pelegrimas
Barbara Pettinos
Richard J. Pinola
Lisa Plumley
Marlene A. Popnik
John W. Punk
Jeanne M. Purtell
Charles Quinn
Judith A. Raaum
Dana M. Rafferty
Vreni Ranjo
Marguerite Ranucci
Carolyn Rebalsky
Andrew T. Reynolds
Sharon R. Richardson
Clint M. Rider
Carl C. Riley
Elizabeth K. Rodgers
Mary Beth Roth
Marilyn Rothberg
Molly R. Rumsey
Thomas Ryan
George P. Sabol
Saint James Convent
Robert J. Saum
Jack Scogna
Patricia O'Neill Scott
Charles V. Shorten
Julie A. Shrader
Robert R. Siegenthaler
Grant Silow
Sisters, Servants of the Immaculate
Heart of Mary
Vincent D. Skahan, Jr.
Kathryn M. Slaats
Eleanor J. Smith-Helker
Jeffrey W. Soderberg
Mary Kathleen Stalter
Arthur E. Stephano
Martha A. Stiber
Theresa A. Strum
Howard Sundwall
Don Tenerowicz
Kenneth B. Tenley
Susan TePas
Frederick Travaglini, Jr.
Joseph J. Trench

Stephanie Trinkl, D.N.Sc.
Michael Tysowsky
Kathy Vail
Jacqueline Vilbert
Villanova University
Cecelia L. Wade
Frank E. Walsh, Jr.
Mary E. Walsh
Ted Walsh
Mary M. Wehrmann
Wendy B. Wetherill
Cynthia J. White
Robert W. Wilkey
Sandra M. Williams
Suzanne Winter
Judith V. Witt, Ph.D.
Anne F. Yacovino-Florian
Barbara Zmiewski

PARENT GIVING
The following current parents and parents of alumni generously supported Immaculata University during the 2020–2021 fiscal year.

Anonymous (1)
Winifred Alogna
Frank X. Altieri, III and Desiree Altieri
Ruth Bradley Arata '82 and
Robert D. Arata
Juan E. Arocho, D.D.S. and
Clair B. Arocho
Charles J. Arteglier, IV and Pamela Arteglier
Patricia Hearing Backer '72
Ruth Ann McCahon Baney '59, '93 M.A.
Michael P. Barrett and Carlyn V. Barrett
Debra Lynn Beam '12 and James L. Beam
Shawn P. Bedwell and Tanya L. Bedwell
Phyllis Bellopede '82 and Robert Bellopede
Matthew J. Berg and Tammy Berg
Gennaro Bifulco and Theresa Bifulco
Clinton H. Breckley and Joan T. Breckley
Lawrence H. Brent and Gina H. Brent
Virginia Feller Brosius '80
Angela E. Bruce
William E. Bruno and Darlene N. Bruno
Michael Campbell and
Gloria-Jean Campbell
Steven Campbell and Lisa Campbell
Stephen P. Carter and Patricia A. Carter
Thomas C. Castner, '07 Ed.D. and
Joanne C. Castner
Michael Cavoto and
Claire Zamorski-Cavoto
Brenda L. Champion Churico '83
Dolores Gibson Cipolone '58
Patricia Stranen Connelly '70 and
Gerard J. Connelly
Francis X. Connors and Dolores M. Connors
Ronald Conti and Emily M. Conti

Kirsty Lynn Cooper '94 and
Mark Joseph Cooper
Christopher J. Cusick and Diane E. Cusick
Stephanie Wham D'Amico '88
Ann Rudolph Dean '63
Thomas DeLucia and Patricia DeLucia
Mary S. DePaolo-Roach
Carolyn Johnson DiFilippo '86
and Thomas P. DiFilippo
Mary Lucille Koppenhafer Dondero '51
Graciela Gil Donovan-O'Donnell '69
Edward F. Dudley and Georgia Dudley
Robert Dunham and Nancy Dunham
Margaret Erickson-Menton '78
Salvatore Faia and Margaret Faia
Elizabeth Gotshall Faunce '90, Ph.D.
Linda Fillion
John T. Fogarty
Frederick J. Frevert and Maureen Frevert
Nora P. Gammon '88
Hilliard Gardner and Leatha Gardner
Mary Anne Bensing Gearing '63
Donald Gerst and PJ Gerst
Margaret Mansbery Girten '85 and
Kevin J. Girten, Sr.
Catherine R. Schwarz Gold '71
James F. Gustainis and
Christine M. Gustainis
Robert S. Gwin
Scott Haberstroh and Michele Haberstroh
Michael D. Harkins and Eileen M. Harkins
William Harkins and Marie Harkins
Rita Bensing Hartleroad '67
Helen C. Troy Hayes '57
James E. Hermansen and
Michele A. Hermansen
Joseph E. Hutter and Mary Anne Hutter
John E. Isselmann and
Margaret M. Isselmann
James Jacobs and Joanne Jacobs
Joan B. Johnson
Joseph P. Jones and Wendy Jones
Melvin P. Jones and Jane Jones
Donald Kamp and Roseann Kamp
Joanne Rossi Kearney '64
Joseph Keenan
George R. Kelly
Robert Bruce Kern and Joan Kern
John R. Kilsheimer
Kenneth Klemick and Kathleen Klemick
Walter S. Kuczynski and
Andrea Aiken Kuczynski
Yvonne M. Falcon Kuemmerle '63
and Walter Kuemmerle
Arthur Kusterbeck and Angela Kusterbeck
Margaret Lacey, Ph.D.
Bartholomew C. LaGrassa
Mohammad Larjani and
Elizabeth Davison Larjani
Robert Leardi, M.D.
Francis A. Livolsi and Kimberly A. Livolsi

Report includes gifts from 7/1/20 to 6/30/21. Every effort has been made to ensure accuracy. We apologize for any errors or omissions made in donor listings. † Indicates deceased

Kenneth Lutz and Jean Lutz
Margaret Bransfield Maguire '69
and Michael J. Maguire
Kevin J. Manning, Ph.D. and Sara Manning
Lucille Lamontagne Markle '67
and William J. Markle
Edward D. Matyas and Eugenie Matyas
Carol McCadden Mayer '79 and
Louis J. Mayer, Ed.D.
Jo Anne L. McAdams '84, '87 M.A.,
'96 Ed.D. and Frank McAdams
Brett McAllister
Helen R. Beatty McClean '84 and
Thomas P. McClean
Susan Lewis McCrary
Robert J. McDonough and
Nora J. McDonough
William A. McGinley and Margaret McGinley
Marliss McGuinness
Barbara A. Majewski McHale '72
Joanne A. McKee '04 and
Bernard M. McKee
Mariellyn Meehan-Scola '89 M.A.
and David A. Scola, M.D.
Paul Metrocavage and Pat Metrocavage
Richard P. Meyer
James F. Morgan, Jr. and
Rosemary K. Morgan
William J. Morgan and Kathleen M. Morgan
Barbara Mulgrew '75 and John P. Mulgrew
Holly Jean Schmuker Mullan '85
Michael R. Murphy and Robin M. Murphy



When trying to decide where to continue my education for my future in nursing, I wanted a school that was going to have a family atmosphere. Every person that is associated with the Immaculata nursing community makes you feel a part of a family.

Grace Lorenz '24

Nursing

Michael Murtha and Patricia Murtha
Harry W. Myers and Maria Myers
Marie Lyons O'Donnell '61
Richard A. Ogorek and Diane H. Ogorek
John J. Olock, Jr. and Diane Olock
JoAnne L. McAdams Osborn '84
and Edward T. Osborn, Jr.
Thomas Pagano and Maureen Pagano
Theresa Major Payton '89 and
Christopher Payton
Charles F. Peppersack
Marianina Pletcher
John Quigley and Suzanne Quigley
Elaine McSherry Rebsamen '62
Adriana Kalpas Riordan '67 and
John F. Riordan
Jeffrey D. Rollison '09 Ed.D. and
Sandra Rollison '06 M.A.
Joseph Romano and Marcie Romano
Scott A. Rombach and Pamela J. Rombach
Theresa Rudnicki-Jones
Irene Ievins Rudnytzky '59 and
Leo Rudnytzky, Ph.D.
Thomas Shurer and Christine Shurer
Ann Marie Conway Six '70
Lynn D. Skalski '14
Joseph D. Smola and Melanie Smola
Joanne Korpanty Solecki '80 and
Thomas J. Solecki
Michael Sotak and Cynthia Stoak
Paul J. Stabile, Sr. and Cheryl A. Stabile
James A. Sterling, III and Anita Sterling
Anne Campo Strasser '62
Peter F. Subach and Christine M. Subach
John Sulfaro and Gina Sulfaro
George J. Sweeney and Mary Sweeney
Robert M. Tafuro and Carol B. Tafuro
William Telford, III and Nancy Lee Telford
Antony Thomas and Mary Ann Thomas
Rita Timoney
Barbara A. Virtue
Lewis Walker and Ellen Walker
Earl B. White, Jr.
Marcus Williams
David D. Witulski and Elizabeth Witulski
William S. Woodward, Ph.D. and
Sandra L. Woodward
Edgar C. Worley, Jr. and Linda Jean Worley
Kathleen Connor Wyatt '98 and
James A. Wyatt
Deborah Cantwell Wynne '61 and
James D. Wynne
Bruce Zeller and Anne Zeller
Michael L. Zengel and Mary Jo Zengel
Susan Coffey Zern '87, M.D.
John C. Zurek, Sr. and Nancy J. Zurek

STUDENT SCHOLARSHIPS

Scholarships are critical to Immaculata's ability to attract talented students and to ensure success for those with financial need. The following are the currently held annual and endowed scholarships and their student recipients for the 2020–2021 fiscal year.

Laverne and Kathryn Tucker Alexander '31 Endowed Scholarship

Gianna Bedwell
Miranda Chinchar
Holly Fey
Sarah Guido
Atia Hall
Grace Lorenz
Rita McDowell
Molly Miller
Marilise Morales
Rubi Morales Alvarez
Marcelo Pereira Travieso
Maria Russo
Branden Smith
Davanta Smith

Rocco N. and Sara J. Borrelli Endowed Scholarship

Madison McGrogan

Judith Debnam Breen Endowed Scholarship

Julia Dececco

Kathy Burke '79 Memorial Endowed Scholarship

Anna Marie Degnan
Brendan Sullivan

Business Advisory Board Scholarship

Miranda Chinchar
Kelli Dombroski
Michael Leshko
Amanda Monostra
Maeve Touhey

Class of 1948 Scholarship

Jessica Wright

Class of 1960 Scholarship

Andrew Fonder

Class of 1963 Scholarship

Skylar Volz

Dolores Wiza Conoscento '52 Endowed Scholarship

Tyler Tillery

Gunard Berry Carlson Creative Writing Award

First Place: Emma Bischoff
Second Place: Patrick Barry
Third Place: Madison Norman
Fourth Place: John Schuyler
Fifth Place: Anna Marie Waller



As a Biology major, I want to go on to medical school and become a neurologist. The Parsons Science Pavilion will provide the facilities and equipment needed to prepare me to get to my end goal of helping more people.

Jordan S. Davis '23

Biology

Charles Q. and Cecilia M. DeLuca Memorial Scholarship

Myanah Martin

Charles and Maris Denny Endowed Scholarship

Christian Distefano

di Toro Family Endowed Scholarship

Taylor Townsley

Almira M. Doust Endowed Scholarship

James Dunwoody
Julia Gillies

Draper Walsh Endowed Service Grant

Catherine Carey
Lauren Carrafa
Julia Darlak
Logan Hughes
Theresa O'Connor

Estelle and Theresa K. Fagan '39 Endowed Scholarship

Jessica Bowe
Alyssa Catagnus
Alpha Diallo
Joseph Duddy
Cristal Garcia
Samantha Haddad
Morganne Harding
Maria Hernandez
Deja Jenkins-Polite
Ashanti Leon

Samantha Loeser
Michael McCormick
Samantha Moyer
Dinnea Nixon
Gabrielle Pabon
Stefan Turner Vaughan
Nicole Wheeler

Jane M. Feely Memorial Endowed Scholarship

Lauren Carrafa
Gwyneth Welsh
Bryce Wiltbank
Anthony Yarson

Jada Gallagher '93 Memorial Endowed Scholarship

Ciane McKelvy

Alice Leisch Guarino '07 B.S.N., '10 M.S.N. Endowed Scholarship for

Nursing
Kelly Hynson

Missy Healey '79 Endowed Scholarship

Kyle Brown

Sister Cor Immaculatum, IHM Scholarship

Caitlyn Hunsberger

IU Endowed Scholarship

Yuriksi Ayala
Melissa Bakey
Mary Jean Cadman
Kevin Clark
Dylan Daywalt
Kaila Fontanetta
Michael Henry
Asa Kitchen
Laura McMonagle
Lindsay Miller
Avery Montano
Olive Monye
Jessica Oldham
Thomas Pierce
Jackson Stinar
Da-Von White
Aileen Zimmerman

Jacobs Music Steinway Scholarship

Rachael Barnes

Anne E. Cavanaugh Kearn '57 Scholarship

Yuridy Rodriguez

Anne E. Cavanaugh Kearn '57 Book Scholarship

Yuridy Rodriguez

Sister Marie Albert Kunberger, IHM '51 and Family Scholarship

Miranda Chinchar

Leaders in Dietetics and Nutrition Scholarships

Kyle Brown

The Maguire Scholarship

Gilberto Almonte
Joseph Billetta
Donovan Blair
Theresa Cerruti
Payton Conard
Gianna DeLong Giorgio
Joseph Duddy
Julia Gillies
Emely Jimenez
Nicholas John
Elizabeth Lipscomb
Mary McKinney
Kelly Nilan
Gerri Passalacqua
Alexa Thornton
Timothy Tomlinson
Shane Warner
Taylor Williams

Anne and Timothy McCarthy Memorial Endowed Scholarship

Haley Celli

Margaret Mary McHugh '89 Scholarship

Lilia Biehl
Siera Cruz
Vanessa Diaz

Margaret '28 and Eileen '29 McKelvey Endowed Scholarship

Thea Garrett

Joanna Cahill McLaughlin '60 Scholarship

Catrianne Suggang

Linda Fredericks Michelson '66 Endowed Scholarship

Kaitlyn Carter
Elizabeth Herlihey
Madelyn Waksmunski

Melanie A. Macko Miles '69 Dietetic/ Nutrition Endowed Scholarship

Madeleine DiAntonio

Donna Pierri Milius '02 Annual Scholarship

Tenayah Govan

Sister Jane Anne Molinaro, IHM Endowed Scholarship

Nicole Langdale

IU Music Scholarship

Julie Gilligan

Saint John Neumann Endowed Scholarship

Nasheem Carter-Ragan
Jackson Fonseca-Webb

Monsignor Hugh J. Nolan Endowed Scholarship

Samantha LaBrake

Dr. Desmond J. Nunan, Sr. and Rev. Francis J. Walsh Endowed Scholarship

Raymond Lutick

J. Robert O'Donnell Scholarship

William Freeman
Tyler Kmiec

Office Depot Scholarship

Lassana Doumbia
Ralphina Kilby
Katy Newton

Catholic Philopatrian Literary Scholarship Fund

Mirialmil Torres-Marté

Shirley Pinola Endowed Scholarship

Kalus Queh

Presser Foundation Scholarship

Erin Gouak

Mary Ellen Quinn Miller '46 Scholarship Fund

Kate Lafferty

Rev. Bernard Ransing Memorial Endowed Scholarship

Emily Green

Trieste Musa Rao '37 Scholarship

Rachael Barnes
Catherine Carey
Daisy Frias
Erin Gouak

IU Reunion Scholarship Fund

Marchello Barile
Gianna Bedwell
Caitlin Clayton
Iverson Hernandez
Woori Kogh
Marilise Morales
Branden Smith

Jessica Lee Ricciardi Scholarship

MacKenzie Cain

Mary Ann Scheuhing '68, Ph.D., J.D. Memorial Scholarship

Steven Long
Maria Montanez

Helen A. Sharpe '36 Scholarship

Miranda Rojas

W.W. Smith Charitable Trust Scholarship

Gianna Bedwell
Megan Beinlich
Alexandra Bethman
Collin Foley
Cori Harding
Shylea Hudson
Emma Markley
Aidan McElwee
Ciane McKelvy
Josaleen Moyer
Katy Newton
Valerie Polvino

Angela Reichwein
Meghan Ricker
Aisha Rosado

Symphony Scholarship

John Antosh
James Dunwoody
Lynn Krieger

Cheryl J. Thatcher '99 Endowed Scholarship

Emily Cox
Anna Freeman

Fred and Barbara '91 Travaglini Endowed Scholarship

Kayla D'Annunzio
Geonna Wilson

UPS Scholarship

Jennifer Reyes-Lopez

Dr. Lina G. Vardaro Scholarship

Kylie Brady
Genevieve Conlon
Victoria Foster
Aminata Kargbo
Samuel Kipp
Kaitlyn Klitchko
Kayla Latendresse
Rachael Miller
Nicole Morsillo
Ziaphieth Rios
Verity Saba
Olivia Simmons
Madeline Terry
Catherine Thomas

Louis and Madeline M. Vassalotti Endowed Scholarship

Alyssa Claycomb

Antonina Rossomando Verdiani Endowed Scholarship

Courtney Floyd

Catherine Walsh and Helen Walsh Kramer Memorial Endowed Scholarship

Jessica Gindle
Ryan Petrie

BUSINESSES AND CORPORATIONS

1100 WCP Enterprises, LLC
AmazonSmile
American Association of Colleges of Nursing
Association of Independent Colleges and Universities of Pennsylvania
Bank of America Charitable Foundation
Bentley Systems, Inc.
Brinker Capital

Bristol-Myers Squibb Foundation
Chester County Economic Development Council
Eaton Corporation
Eli Lilly and Company Foundation, Inc.
Ellucian Company L.P.
The Elsevier Foundation
Exelon Corporation
Fiserv, Inc.
The GE Foundation
GlaxoSmithKline Foundation
Hershey Foods Corporation
The Home Depot Foundation
Hospital Central Services, Inc.
IBM Corporation
Jacobs Music Company
Johnson & Johnson
Lockheed Martin Corporation Foundation
Matching Gift Program
The Merck Company Foundation
Mettler Toledo, Inc.
Meyer and Associates
Norfolk Southern Foundation
Office Depot, Inc.
PAAL Partners, Inc.
The Pfizer Foundation
PPL Corporation
PSEG Educational Matching Gift Program
SAP America, Inc.
Southeastern Pennsylvania Consortium for Higher Education (SEPCHE)
Tune-Up Network Enterprises, LLC
The Vanguard Group
Verizon Foundation
Vigilant Compliance, LLC
Vitusa Products, Inc.
Wawa, Inc.
Wells Fargo
Worley's Home Services, LLC

FOUNDATIONS

Robert H. and Ruth G. Bowman Charitable Foundation
The Gunard Berry Carlson Memorial Foundation, Inc.
Independence Blue Cross Foundation
The Henry Luce Foundation
Maguire Foundation
The McLean Contributionship
Oppasser Family Charitable Foundation
The Pearl Foundation, Inc.
The Presser Foundation
The Henry A. Quinn Charitable Foundation
The Sandy Hill Foundation
W. W. Smith Charitable Trust
The Teagle Foundation
WSFS Community Foundation

CENTENNIAL WEEKEND

REUNION

OCTOBER 8-9, 2021

Reunion 2020 and 2021 will be combined to celebrate years ending in 0, 5, 1 and 6

CENTENNIAL GALA AND MASS

OCTOBER 9, 2021



immaculata.edu/centennial

Report includes gifts from 7/1/20 to 6/30/21. Every effort has been made to ensure accuracy. We apologize for any errors or omissions made in donor listings. † Indicates deceased



IMMACULATA
UNIVERSITY

INSTITUTIONAL
ADVANCEMENT

1145 West King Road
Immaculata, PA 19345



MIGHTY MAC MADNESS

DAY OF GIVING

March 16, 2022

Celebrate the **50th Anniversary**
of the Mighty Macs' Victory during
our Day of Giving.

Details to follow.


IMMACULATA
UNIVERSITY