

Non-clogging Pump

STERLING

DBS 3216...30040

TECHNICAL DATA

Output:	up to 1200 m ³ /h
Delivery head:	up to 100 m
Speed:	up to 3600 rpm depending of the pump size and material execution
Medium temperature:	max. 110 °C
Casing pressure:	10 bar
Shaft sealing:	stuffing box or mechanical seal
Flange connections:	PN 10
Sense of rotation:	clockwise, when seen from the drive on the pump

APPLICATION

Series DBS volute-casing pumps can be used where the requirement is for pumping dirty liquids or liquids with solids.

Sewage plants:	Storm water, pre-filtered sewage, industrial effluents
Chemical plants:	Chemical effluents, brines and lies, milk of lime, crystal sludge, filter material, plastic suspensions
Rolling mills:	Scale-contaminated water from steel and copper rolling mills
Foundries and iron and steel works:	Effluents and sludges from dust and arrestor plants
Construction industry:	Mixtures of water and cement and water from excavation ditches
Paper and cellulose pulp industry:	Paper, chemical pulp and mechanical suspensions up to 6% absolutely dry
Sugar mills:	Carbonation juice, concentrated juice, milk of lime
Food industry:	Thick mash, fruit and potato slices (parings)

DESIGN

Process type, single-stage, volute casing pumps with design features and nominal rating to ISO2858/EN22858 and enlarged sizes

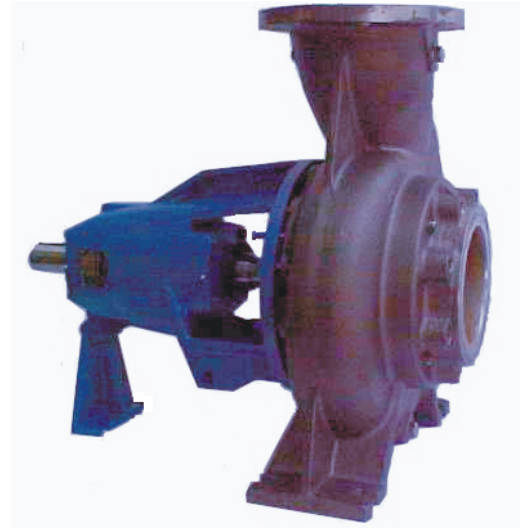
The process design permits dismantling of the complete bearing unit towards the drive end, without the pump casing having to be disconnected from the piping. If a spacer coupling is used it is also unnecessary to disconnect the motor.

CONSTRUCTION

Casing pressure: Max. 10 bar between -10 °C and +120 °C
Please note: Casing pressure = Inlet pressure + shut off head.
Max. test pressure 16 bar

Branch positions:

Suction branch axial, discharge branch radial upwards.



Flanges:

Connection dimensions of flanges DIN 2501 PN 10 .
Flanges can be supplied drilled to ANSI
Optional the pump can be supplied with a flange adapter
piece on the suction side (see sectional drawing, pos. 72.20)

Bearings:

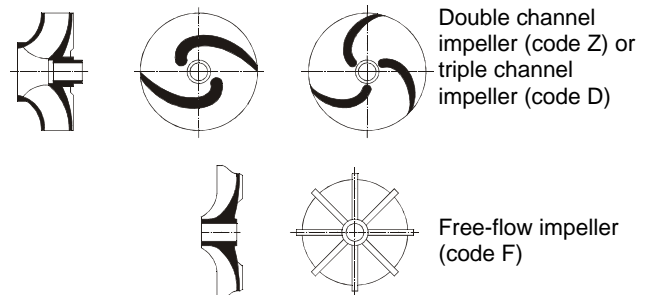
Execution B:
Pump end: one cylindrical roller bearing to DIN 5412
Drive end: one deep groove ball bearing to DIN 625
The bearings are grease lubricated

Execution C:
Pump end: one cylindrical roller bearing to DIN 5412
Drive end: one deep groove ball bearing to DIN 625
The bearings are oil lubricated

Execution S:
Pump end: one cylindrical roller bearing to DIN 5412
Drive end: two angular contact ball bearings in O-
arrangement.
The bearings are grease lubricated

Execution T:
Pump end: one cylindrical roller bearing to DIN 5412
Drive end: two angular contact ball bearings in O-
arrangement.
The bearings are oil lubricated

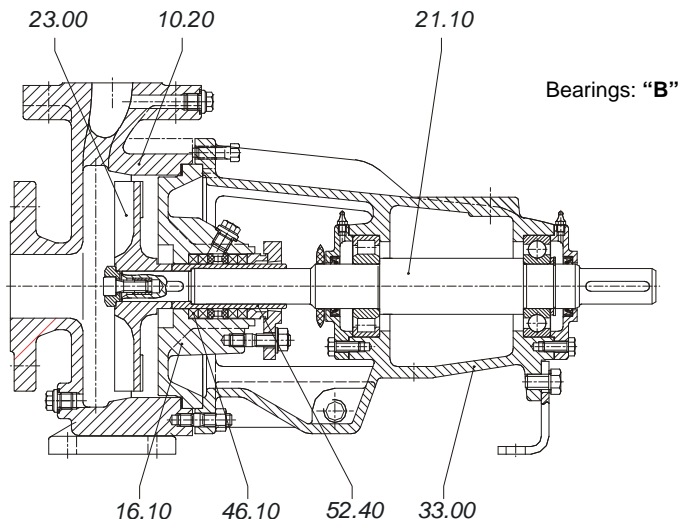
Shapes of impellers:



If required, the sealing clearance gap on the suction side of pumps fitted with double and triple channel and wear plates can be arranged for flushing.

SECTIONAL DRAWINGS AND PARTS LIST

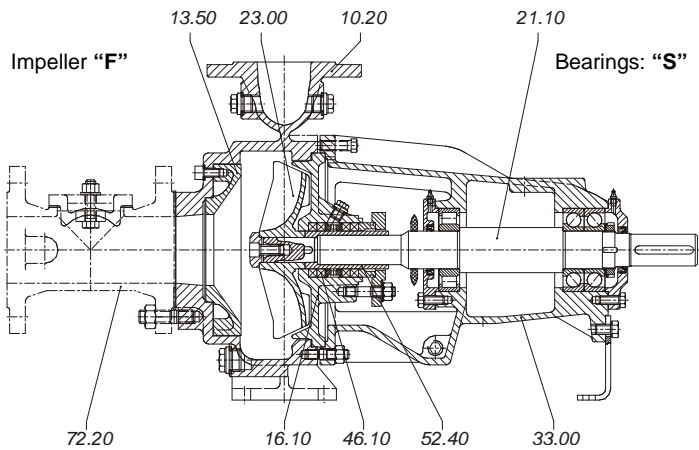
Only for DBSA 3216F and DBSA 3220F
(without wear plate)



- 10.20 Casing
- 16.10 Casing cover
- 33.00 Bearing bracket
- 21.10 Shaft
- 23.00 Impeller
- 46.10 Stuffing box
- 52.40 Shaft sleeve

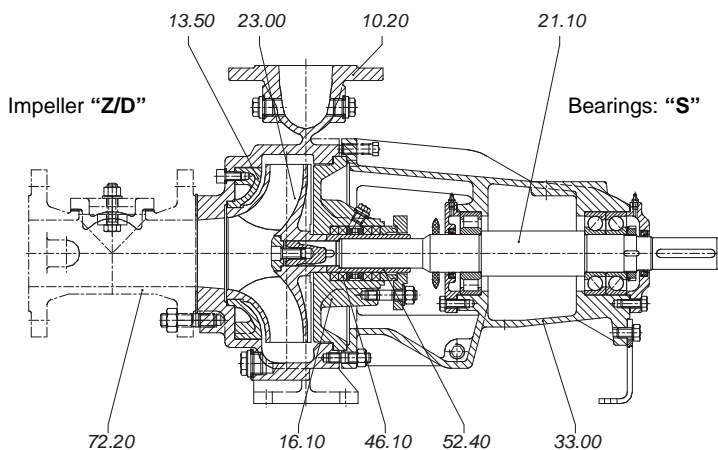
Shaft sealing design 052

Remaining pumps sizes

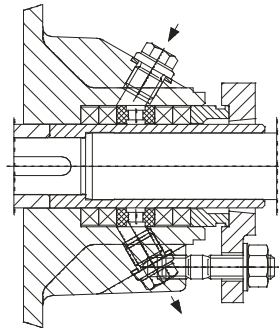


- 10.20 Casing
- 13.50 Wear plate
- 16.10 Casing cover
- 33.00 Bearing bracket
- 21.10 Shaft
- 23.00 Impeller
- 46.10 Stuffing box
- 52.40 Shaft sleeve
- 72.20 Adapter piece

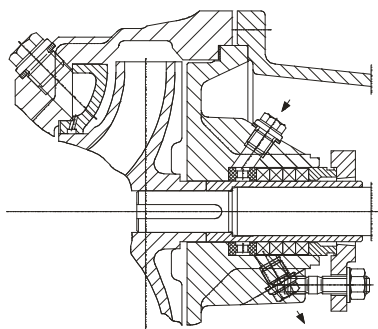
Shaft sealing design 052



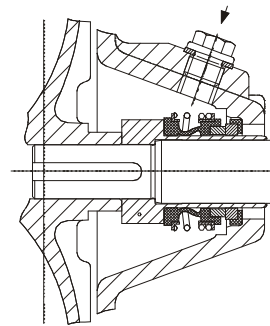
Types of shaft sealings



Designation 051: Uncooled stuffing box with external sealing and flushing. Temperature range: -10°C to 110°C

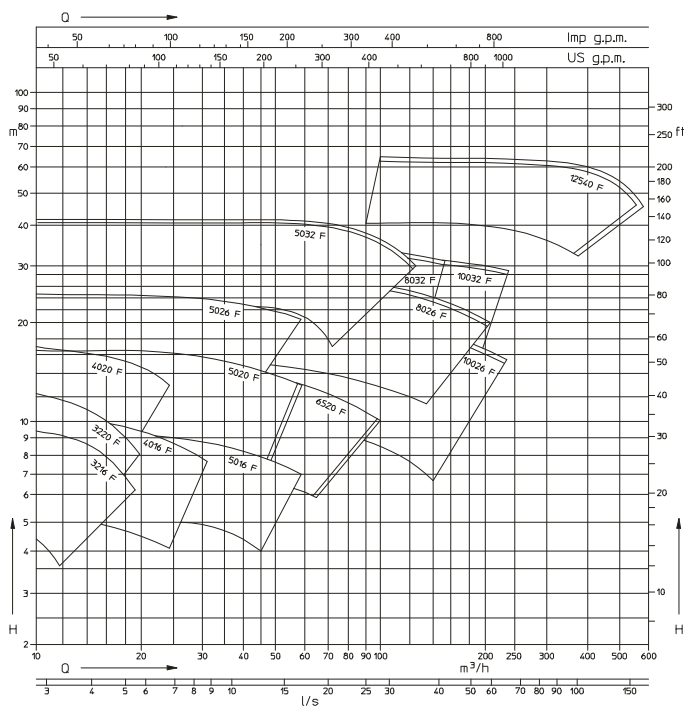


Designation 071: Uncooled stuffing box with flushing upstream of packing and flushing between wear plate and impeller. Temperature range: -10°C to 110°C

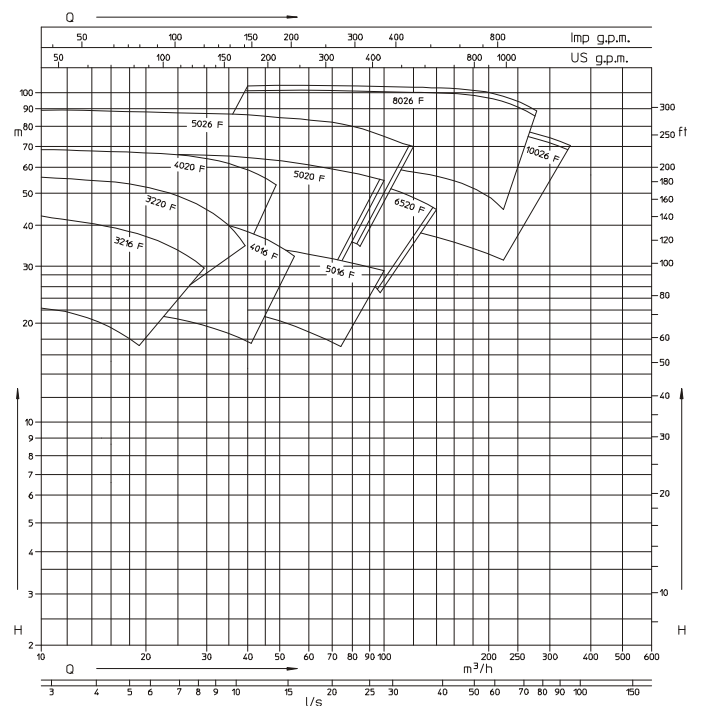


Mechanical seal

PERFORMANCE GRAPHS

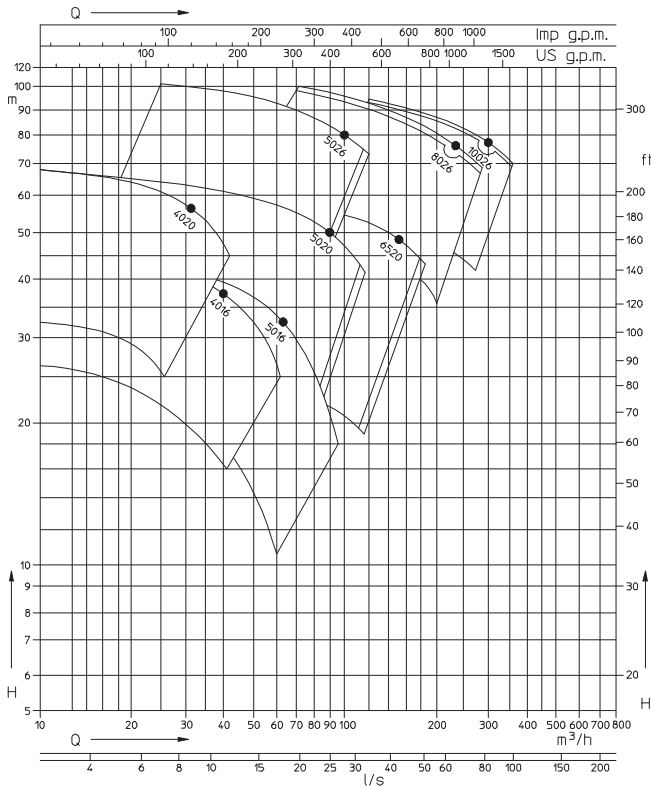


Pumps with free flow impeller "F"
1450 rpm



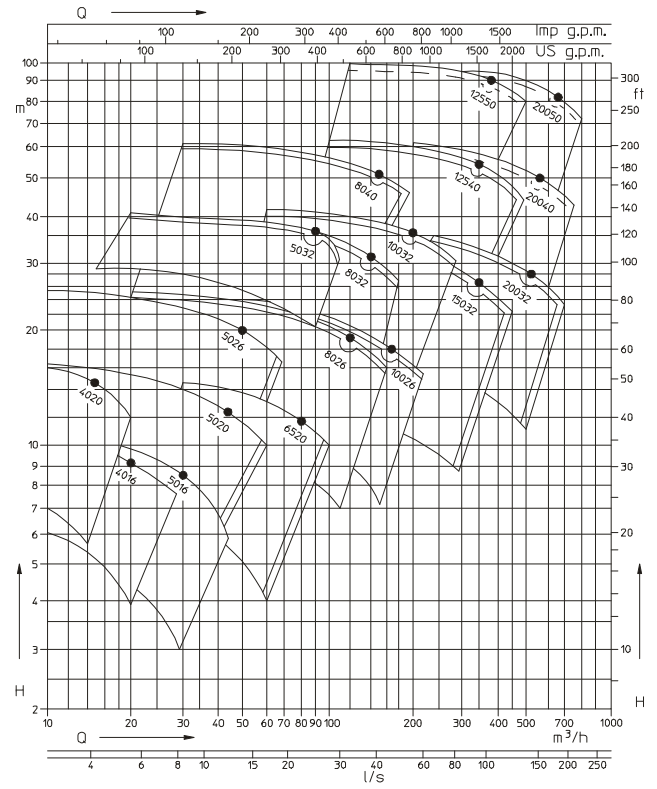
2900 rpm

Pumps with channel impeller, double (Z) respectively triple (D)



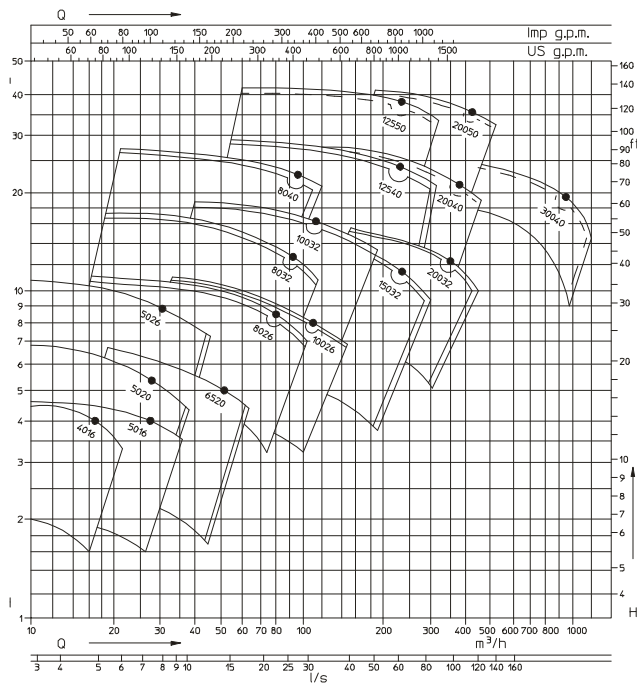
Shaft unit		
35	45	55

2900 rpm



Shaft unit				
35	45	55	65	75

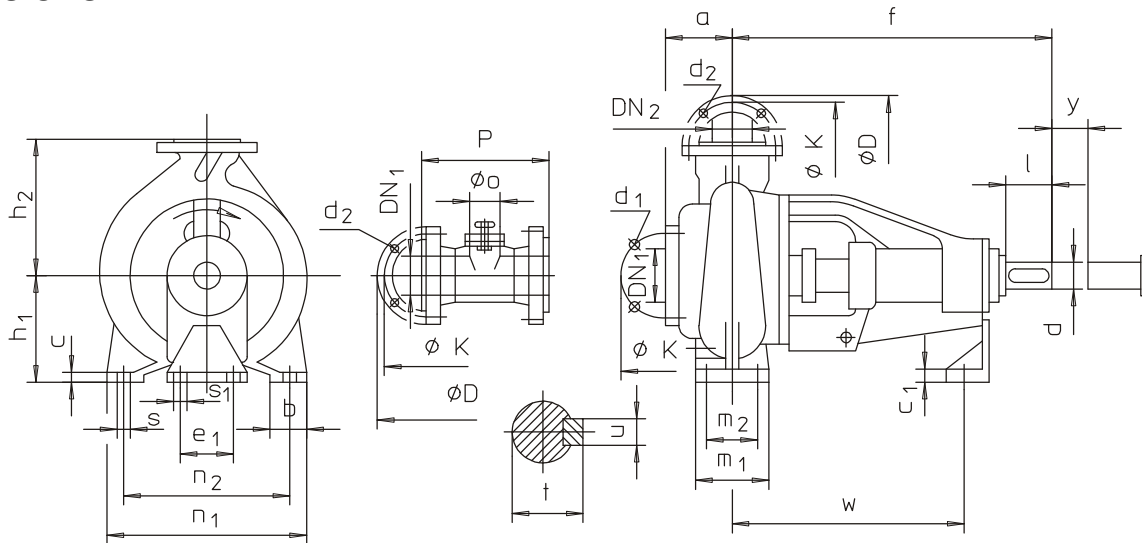
1450 rpm



Shaft unit					
35	45	55	65	75	90

960 rpm

DIMENSIONS



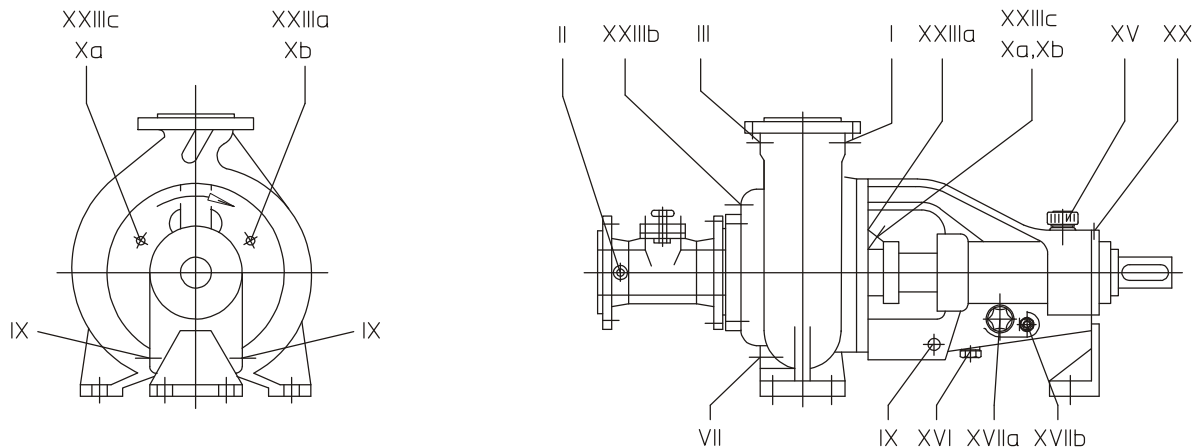
Dimensions in mm

Size	Bearing	Pumps dimensions						Foot dimensions											Shaft end				Spa	1)		
		DN2	DN1	a	f	h1	h2	b	c	c1	e1	m1	m2	n1	n2	s	s1	w	d	l	t	u		y	o	P
3216	35	32	50	80	425	132	160	50	14	6	100	70	240	190	14	15	315	28	60	31	8	140	80	200	-	-
3220				420	160	180	13									300										
4016	35	40	50	90	405	160	180	50	14	6	100	70	240	190	14	13	295	28	60	31	8	140	80	200	-	-
4020				410	160	200	295																			
5016	35	50	65	100	405	160	200	50	14	6	100	70	240	190	14	13	295	28	60	31	8	140	80	200	-	-
5020	45			112	500	180	15										315									
5026	45	50	65	125	500	200	250	50	14	6	100	70	240	190	14	15	370	38	80	41	10	140	80	200	-	-
5032	55			140	550	225	280										12									
6520	45	65	80	125	500	180	225	50	14	6	100	70	240	190	14	13	370	38	80	41	10	140	80	200	-	-
8026	55	140	550	225	280	12	320										250									
8032	55	80	100	125	550	250	315	50	14	6	100	70	240	190	14	14	370	48	110	51.5	14	140	80	200	-	-
8040	65	130	550	225	280	12	320										250									
10026	55	100	125	140	670	280	355	50	14	6	100	70	240	190	14	18	500	55	110	59	16	140	80	200	-	-
10032					550	225	280										12									
12540	65	125	150	170	670	315	400	50	14	6	100	70	240	190	14	18	500	55	110	59	16	140	80	200	-	-
12550	75	720	355	450	12	370	48										65									
15032	65	150	200	200	670	280	400	50	14	6	100	70	240	190	14	22	500	55	110	59	16	140	80	200	-	-
20032					315	450	12										370									
20040	75	200	200	200	720	355	500	50	14	6	100	70	240	190	14	18	500	55	110	59	16	140	80	200	-	-
20050					720	355	500										12									
30040	Dimensions on request																									

Dimensions connections flanges according to DIN 2501 PN - 10										
DN1/DN2	32	40	50	65	80	100	125	150	200	
ϕD	140	150	165	185	200	220	250	285	340	
ϕk	100	110	125	145	160	180	210	240	295	
d1 x number	-	- *) 18 x 4	M 16 x 4 *) 18 x 4	M 16 x 4	M 16 x 8	M 16 x 8	M 16 x 8	M 20 x 8	M 20 x 8	
d2 x number	18 x 4	18 x 4	18 x 4	18 x 4	18 x 8	18 x 8	18 x 8	22 x 8	22 x 8	

*) Only for sizes 32...

TABLE OF CONNECTIONS



Code	Connections	For version with	
		Grease	Oil
I	Pressure gauge connection		
II	Pressure/vacuum gauge connection		
III	Vent		
VII	Drain		
IX	Drip and leakage connection		
Xa	Inlet connection for sealing liquid	External sealing	
Xb	Outlet connection for sealing liquid	External sealing	
XV	Oil filling		X
XVI	Oil drain		X
XVIIa	Oil level sight glass		X
XVIIb	Constant level oiler connection		X
XX	Grease nipple	X	
XXIIIa	Flushing liquid connexion for shaft seal	Flushing before packing	
XXIIIb	Flushing liquid connexion for wear plate	Flushing of wear plate	
XXIIIc	Seal flushing	External sealing	

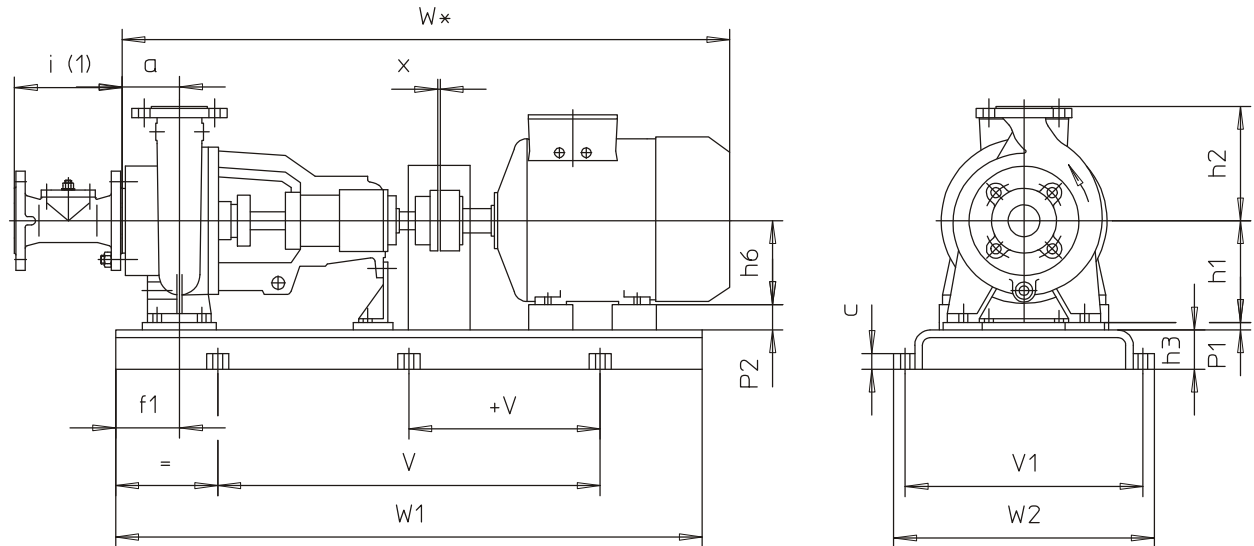
Dimensions of connections

Code	Pumps with shaft unit										90
	35		45		55		65		75		
	Standard type	Special type	Standard type	Special type	Standard type	Special type	Standard type	Special type	Standard type	Special type	
I	G 1/2" ⁽⁴⁾		G 1/2"		G 1/2"		G 1/2"		G 1/2"		
II	Without hole	G 1/2"	Without hole	G 1/2"	Without hole	G 1/2"	Without hole	G 1/2"	Without hole	G 1/2"	
III	G 1/2" ⁽⁵⁾		G 1/2"		G 3/4"		G 1" ⁽³⁾		G 1"		
VII	G 1/2" ⁽⁶⁾		G 1/2" ⁽¹⁾		G 1" ⁽²⁾		G 1" ⁽³⁾		G 1"		
IX	G 1/2"		G 1/2"		G 1/2"		G 3/4"		G 3/4"		
Xa	G 1/4"		G 1/4"		G 1/4"		G 3/8"		G 3/8"		
Xb	G 1/4"		G 1/4"		G 1/4"		G 3/8"		G 3/8"		
XV	Ø 20		Ø 20		Ø 20		Ø 20		Ø 20		
XVI	G 1/4"		G 1/4"		G 1/4"		G 1/4"		G 1/4"		
XVIIa	G 3/4"		G 3/4"		G 3/4"		G 3/4"		G 1"		
XVIIb	G 1/4"		G 1/4"		G 1/4"		G 1/4"		G 1/4"		
XX	M6		M6		M6		M6		M6		
XXIIIa	G 1/4"		G 1/4"		G 1/4"		G 3/8"		G 3/8"		
XXIIIb	G 1/2"		G 1/2"		G 1/2"		G 1/2"		G 1/2"		
XXIIIc	G 3/8"		G 1/2"		G 1/2"		G 1/2"		G 1/2"		

On request

- 1) G 3/4" in 6520
- 2) G 3/4" in 5032, 8026 and 8032
- 3) G 3/4" in 8040
- 4) G 1/4" in 3216 and 3220
- 5) Pumps 3216, 3220 not drilled
- 6) G 1/4" in 3216 and 3220

Foundation Plan



n=2900 rpm

Dimensions in mm., general tolerances (bedplates) for cast parts to DIN 1686/GTB 17, for welded parts to DIN 8570 B

Pump size	Motor		Base-plate	Coupling	Pump-motor references										Base-plate references								Bolts	Weight set											
	Size	kw.			a	i (2)	h1	h2	h6	f1	W *	W1	V	+V	V1	W2	h3	P1	P2	c	x														
3216	90 S	1,5	S 272	B-68	80	132	160	90	80	841	820	540	320	360	65	42	25	M16x250	88																
	90 L	2,2	S 017					B-80	100	180	882	1100							700	325	361	60	32	104											
	100 L	3	S 303	B-95					112	180	903	920							600	350	390	65	20	111											
	112 M	4						132	80	963	920	600							350	390	65	—	25	M16x250	125										
3220	132 S	5,5	S 017	B-80		80	132	160	100	180	877	1100	700	325	361	60	60	48	M12x150	111															
	90 L	3							S 303	B-95	112	180	898							920	600	350	390	65	28	118									
	112 M	4	S 344	B-95							132	80	958							920	600	350	390	65	28	M16x250	132								
	132 S	5,5							132	80	958	920	600							350	390	65	28	M16x250	142										
4016	160 M	11	S 344	B-95	80		132	160	160	80	1092	1020	660	400	450	80	—	30	M20x400	171															
	100 L	3							S 272	B-80	100	180	872							820	540	320	360	65	60	48	25	M16x250	99						
	112 M	4	S 303	B-95							112	70	893							820	540								320	360	65	28	106		
	132 S	5,5							132	90	953	920	600							350	390								65	28	126				
4020	160 M	11	S 344	B-95		80	132	160	160	90	1087	1020	660	400	450	80	—	30	M20x400	165															
	100 L	3							S 272	B-80	100	70	872							820	540	320	360	65	60	48	25	M16x250	102						
	112 M	4	S 303	B-95							112	70	893							820	540								320	360	65	28	109		
	132 S	5,5							132	90	953	920	600							350	390								65	28	116				
5016	160 L	18,5	S 344	B-95	100		132	200	160	90	1087	1020	660	400	450	80	—	30	M20x400	175															
	112 M	4							S 303	B-80	112	130	903							920	600	350	390	65	48	25	M16x250	117							
	132 S	5,5	S 344	B-95							132	90	963							920	600							350	390	65	28	131			
	160 M	11							160	90	1097	1020	660							400	450							80	—	30	141				
5020	160 L	18,5	S 344	B-95		112	132	180	112	65	1010	920	600	350	390	65	68	25	M16x250	135															
	112 M	4							S 303	B-80	112	65	1010							920	600	350	390	65	68	25	M16x250	159							
	132 S	5,5	S 385	B-95							132	100	1070							1020	660							400	450	80	48	20	M20x400	169	
	160 M	11							160	100	1204	1140	740							440	490													80	20
5026	180 M	22	S 436	B-125	125		132	200	180	125	1328	1270	840	490	540	80	20	—	30	M20x400	236														
	160 L	18,5							S 385	B-95	180	125	1386								1270	840	490	540	80	20	—							30	M20x400
	180 M	22	S 385	B-110							200	125	1386								1270	840						490	540	80	20	—	30		
	200 L	30							200	125	1386	1270	840								490	540													
5026	160 M	11	S 385	B-95		125	132	200	160	90	1217	1140	740	440	490	80	—	40	M20x400	240															
	160 L	18,5							S 385	B-110	160	90	1217							1140	740	440	490	80	—	40	M20x400							257	
	180 M	22	S 436	B-125							180	125	1341							1270	840							440	490	80	20	M20x400	271		
	200 L	30							200	125	1399	1270	840							490	540												80	20	—
5026	225 M	45	S 486	B-140	125		132	250	225	110	1406	1250	840	550	610	100	25	—	40	M24x400	359														
	250 M	55							S 607	B-140	250	140	1559								1400	940	670	730	100	50	—						40	M24x400	398
225 M	45	S 607	B-140	225							110	1406	1250								840	550						610	100	25	—	40			M24x400
250 M	55			250					140	1559	1400	940	670								730														

Dimensions for motor with enclosure IP-55 , make of motor to our choice

(1) Intermediate piece optional

Foundation Plan

n=2900 rpm

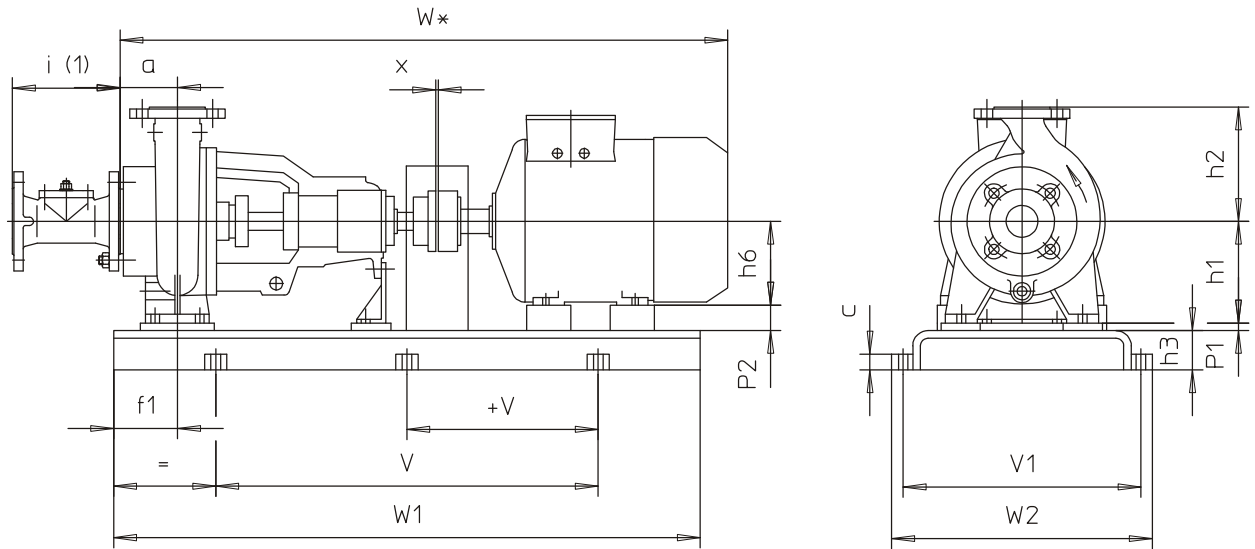
Dimensions in mm.;general tolerances (bedplates) for cast parts to DIN 1686/GTB 17,for welded parts to DIN 8570 B

Pump size	Motor		Base-plate	Coupling	Pump-motor references							Base-plate references										Bolts	Weight set											
	Size	kW.			a	i (2)	h1	h2	h6	f1	W *	W1	V	+V	V1	W2	h3	P1	P2	c	x													
6520	132 S	7,5	S 385	B-95	125	200	180	225	132	155	1083	1140	740	—	440	490	80	—	48	30	M20x400	194												
	160 M	11							160	90	1217								20			226												
	160 L	15							180	1341	20								243															
	180 M	22	S 436	B-110					180	1250	840	—	490		540	20		—	40	35		40	45	45	40	M24x400	257							
	200 L	30							200																		125	1399	1270	20	322			
	225 M	37							225																		110	1406	180	130	1396	1250	45	345
180 M	22	S 486	B-110	130	250	225	280	200	185	1454	1420	940	—	550	610	100	—	25	4	M24x400	384													
200 L	30							225	175	1461								1400			25	388												
225 M	37							250	120	1614								1400			—	411												
250 M	45	S 607	B-140					280	1689	1800	1420	710		700	750		140	85		30	20	120	25	40	M16x250	440								
280 S	75							315																		185	1794	1900	1520	760	770	820	120	657
280 M	90							180x75x14																		B-160	200	1464	1420	940	—	550	610	100
315 S	110	190x82x14	225	175	1471	1400	—	670	730	25	—	40	672																					
200 L	30	S 487	B-125	280	185	1699	1800	1420	710	700	750	140	85	30	20	M16x250	902																	
225 M	37			315	1804	1900	1520	760	770	820	120	1127																						
250 M	45			190x82x14	280	185	1699	1800	1420	710	700	750	140	85	30		20	1142																
280 S	75	S 607	B-140	140	250	225	280	280	185	1699	1800	1420	710	700	750	140	85	30	20	M16x250	942													
280 M	90							180x75x14	B-160	315	1804	1900	1520	760	770	820	120	1142																
315 S	110							190x82x14		280	185	1699	1800	1420	710	700	750	140	85		30	20	1142											

Dimensions for motor with enclosure IP-55 , make of motor to our choice

(1) Intermediate piece optional

Foundation Plan



n=1450 rpm

Dimensions in mm., general tolerances (bedplates) for cast parts to DIN 1686/GBT 17, for welded parts to DIN 8570 B

Pump size	Motor		Base-plate	Coupling	Pump-motor references							Base-plate references										Bolts	Weight set										
	Size	kW.			a	i (2)	h1	h2	h6	f1	W *	W1	V	+V	V1	W2	h3	P1	P2	c	x												
3216	71	0,25	S 272	B-68	80	132	160	71	115	749	820	540	320	360	65	25	61	25	4	M16x250	79												
		0,37						80	95	783							52				80	82											
	0,55	90 S						90	80	841							42				70	87											
	0,75							90 L	90	80							836				80	91											
3220	80	0,55						S 303	B-80	90							180				80	95	778	920	600	350	390	80	30	60	30	M20x400	89
		0,75																			90 S	90	80							831			70
	1,1	90 L		100	70	877	60				105																						
	1,5	100 L		100	70	873	70				107																						
4016	80	0,55		S 344	B-80	90	160				80	95	773	1020	660	400		450	80		30	80	30							M20x400			104
		0,75									90 S	90	80									831											70
	1,1	90 L						100	80	872	100	109																					
	1,5	100 L						100	80	872	100	112																					
4020	71	0,37	S 385					B-80	90	160	71	130	739				1140			740		440		490	80	30	89	30	M20x400		120		
		0,55									90 S	90	80														831				70	99	
	0,75	90 L		100	80	872	60				102																						
	2,2	100 L		100	80	872	60				110																						
5016	80	0,55		S 435	B-80	100	200				80	165	783	1270	840	490		540	80		30		80				30			M20x400	112		
		0,75									90 S	90	135										841								70	103	
	1,1	90 L	100					115	882	60	111																						
	1,5	100 L	100					115	882	60	113																						
5020	90 S	1,1	S 436					B-80	112	180	90	100	948				1270			840		490	540	80	30	90		30	M20x400		118		
		1,5									100 L	100	80													989					80	121	
	2,2	112 M		112	70	1010	68				129																						
	3	132 S		112	70	1010	68				131																						
5026	100 L	2,2		S 436	B-80	125	200				100	190	1002	1270	840	490		540	80		30					100	30			M20x400	136		
		3									112 M	112	180													1023					88	136	
	4	132 S	112					160	1088	100	161																						
	5,5	132 M	112					140	1148	88	178																						
5032	112 M	4	S 436					B-110	140	225	112	160	1088				1270			840		490	540	80	30	113		30	M20x400		200		
		5,5									132 S	132	140													1148					93	211	
	7,5	160 M		160	130	1282	65				237																						
	4	160 L		180	120	1406	45				262																						
5032	180 M	18,5		S 436	B-125	140	225				180	120	1406	1270	840	490		540	80		30					25	30			M20x400	289		
		22									200 L	200	1464													25					306		
5032	200 L	30	S 436	B-125	140	225	200	1464	1464	1270	840	490	540	80	30	25	30	M20x400	325														
		30					25	25	25							25			341														

Dimensions for motor with enclosure IP-55 , make of motor to our choice

(1) Intermediate piece optional

Foundation Plan

n=1450 rpm

Dimensions in mm..general tolerances (bedplates) for cast parts to DIN 1686/GB 17.for welded parts to DIN 8570 B

Pump size	Motor		Base-plate	Cou-pling	Pump-motor references							Base-plate references										Bolts	Weight set													
	Size	kW.			a	i (2)	h1	h2	h6	f1	W *	W1	V	+V	V1	W2	h3	P1	P2	c	x															
6520	90 L	1,5	S 385	B-80	125	200	180	225	90	215	961	1140	740	440	490	80			90	30		M20x400	156													
	100 L	2,2							100	180	1002								80				164													
	112 M	3		112					1023	68	166																									
	132 S	5,5		132					150	1083	48								171																	
	132 M	7,5																	186																	
8026	100 L	3	S 486	B-110	130		225	280	100	225	1057	1250	840						125	40		M24x400	227													
	112 M	4							112	215	1078								113				232													
	132 S	5,5							132	180	1138								93				246													
	132 M	7,5							160	140	1272								65				257													
	160 M	11							180	180	1396								45				277													
	160 L	15							132	180	1133								118				294													
	180 M	18,5							160	140	1267								90				313													
	132 S	5,5							180	180	1391								70				289													
	132 M	7,5							200	180	1449								50				300													
	160 M	11																					320													
8032	160 L	15	S 487	B-125	125	250	315		160	140	1267	1420	940						90	35		M24x400	337													
	180 M	18,5							180	180	1491								70				356													
	180 L	22							200	180	1449								50				392													
	200 L	30																					436													
	160 M	11							160	250	1402								120				455													
	160 L	15							180	180	1526								100				472													
	225 S	37							200	160	1584								80				491													
225 M	45					505																														
8040	160 M	11	S 538	B-140	250	280	355		160	250	1402	1620	1060	—	600	660	100	—	100	35		M24x400	549													
	160 L	15							200	160	1584								80				594													
	180 M	18,5							225	140	1621								55				614													
	180 L	22							112	220	1088								113				247													
	200 L	30							132	190	1148								93				261													
	225 S	37							160	130	1282								65				272													
	225 M	45							180	110	1406								45				309													
10026	112 M	4	S 486	B-110	140	225	280		112	220	1088	1250	840						113	40		M24x400	328													
	132 S	5,5							132	190	1148								93				272													
	132 M	7,5							160	130	1282								65				292													
	160 M	11							180	110	1406								45				309													
	160 L	15							132	190	1148								118				342													
	180 M	18,5							160	110	1282								90				296													
	180 L	22							180	110	1406								70				316													
10032	132 M	7,5	S 487	B-110	250	315			132	190	1148	1420	940						90	35		M24x400	333													
	160 M	11							200	140	1464								50				432													
	160 L	15							225	140	1501								25				478													
	180 M	18,5							180	130	1556								1400				940	135	505											
	180 L	22							200	170	1651								1600				1060	115	519											
	200 L	30							225	150	1774								1950				1570	785	700	750	140	30	65	20	1093					
	225 S	37							280	220	1849								1950				1570	785	700	750	140	30	65	20	1143					
12540	180 M	18,5	S 607	B-125	170	280	355	450																												
	180 L	22																						200	150	1664	155	723								
	200 L	30																						225	130	1824	105	768								
	225 S	37																						250	130	1824	105	788								
	225 M	45																						280	220	1849	1950	1570	785	700	750	140	30	65	20	988
	250 M	55																						200	150	1664	155	723								
	280 S	75																						225	130	1824	105	788								
	280 M	90																						250	130	1824	105	788								
	280 L	90																						280	220	1849	1950	1570	785	700	750	140	30	65	20	1093
	200 L	30																						280	220	1849	1950	1570	785	700	750	140	30	65	20	1143
12550	225 S	37	S 608	B-160	170	280	355	450																												
	225 M	45																						200	150	1701	1600	1060	—	670	730	100	—	130	40	723
	250 M	55																						225	130	1824	1600	1060	—	670	730	100	—	105	40	768
	280 S	75																						250	130	1824	1600	1060	—	670	730	100	—	70	20	788
	280 M	90																						280	220	1849	1950	1570	785	700	750	140	30	65	20	988
	280 L	90																						200	150	1664	155	723								
	315 S	110																						225	130	1824	1600	1060	—	670	730	100	—	130	40	788
	315 M	132																						250	130	1824	1600	1060	—	670	730	100	—	105	40	988
	315 L	160																						280	220	1849	1950	1570	785	700	750	140	30	65	20	1093
	200 L	30																						280	220	1849	1950	1570	785	700	750	140	30	65	20	1143
15032	132 M	7,5	S 606	B-125	280	400			132	1298	1250	840																								
	160 M	11							160	130	1432	1400													940	148	410									
	160 L	15							180	180	1556	1400													940	120	443									
	180 M	18,5							200	200	1614	1600													1060	80	460									
	180 L	22							225	180	1651	1600													1060	55	479									
	200 L	30																									493									
	225 S	37																									554									
	225 M	45																									600									
																											620									
																											620									

Dimensions for motor with enclosure IP-55 , make of motor to our choice

(1) Intermediate piece optional

Foundation Plan

n=1450 rpm

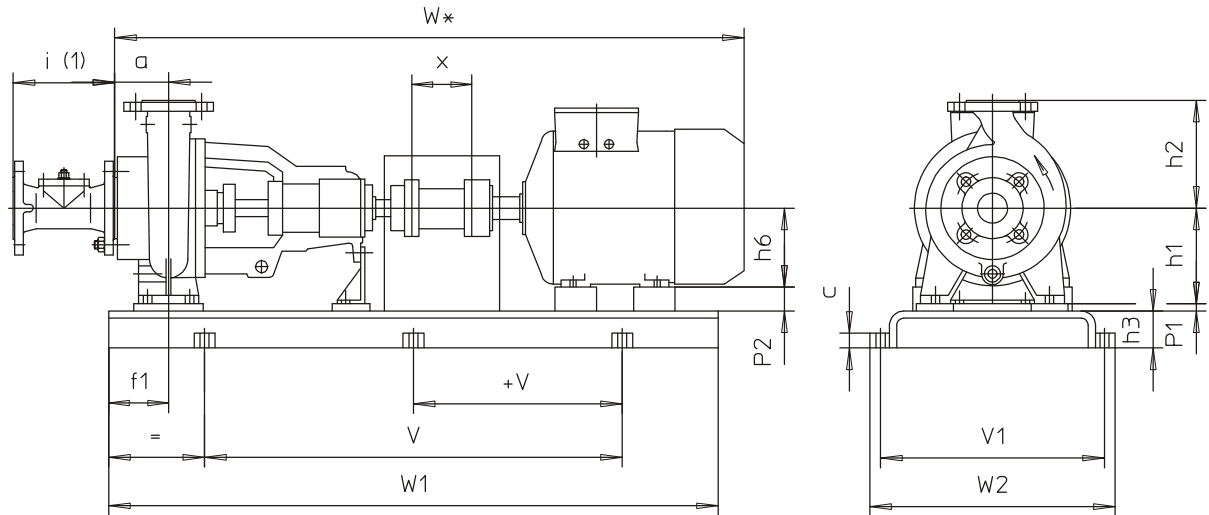
Dimensions in mm.,general tolerances (bedplates) for cast parts to DIN 1686/GTB 17,for welded parts to DIN 8570 B

Pump size	Motor		Base-plate	Coupling	Pump-motor references							Base-plate references										Bolts	Weight set		
	Size	kw.			a	i (2)	h1	h2	h6	f1	W *	W1	V	+V	V1	W2	h3	P1	P2	c	x				
20032	160 L	15	S 607	B-125	200	300	315	450	160		1462	1400	940	—	670	730	100	—	155	40	M24x400	483			
	180 M	18,5							180	130	1586								135			502			
	180 L	22							200	200	1644								115			516			
	200 L	30	S 608	B-140					225	180	1681	1600	1060	90	623										
	225 S	37							250	130	1804	65	845												
	225 M	45							280	260	1879	2000	1580	790	700	750	140	30	20	1091					
	250 M	55							200x75x14	B-180	180	130	1636	175	635										
	280 S	75									200	200	1694	155	679										
20040	180 L	22	S 608	B-160	200	300	355	500	180	130	1636	1600	1060	—	670	730	100	—	175	40	M24x400	635			
	200 L	30							200	200	1694								155			679			
	225 S	37							225	160	1731								130			744			
	225 M	45	250	130					1854	105	944														
	250 M	55	205x75x14	B-180					280		1929	2050	1630	815	700	750	140	30	180	1191					
	280 S	75							315	260	2064	2200	1740	870	770	820			1241						
	280 M	90	220x82x14	B-200					315		2064	2200	1740	870	770	820			70	1517					
	315 S	110							250	300	1854	2300	1840	920	180	1671									
315 M	132	230x82x14			B-160	280		1929	2050	1630	815	750	800	150	1098										
315 L	160		315	260		2064	2200	1740	870	115	1277														
20050	250 M	55	205x80x14	B-180	200	300	400	530	250	300	1854	2050	1630	815	750	800	140	30	180	20	M16x250	1327			
	280 S	75							280		1929								2050			1630	815	750	800
	280 M	90	315	260					2064	2200	1740								870			115	1523		
	315 S	110	220x82x14	B-200					250	300	1854	2300	1840	920	180	1098									
	315 M	132							280		1929	2050	1630	815	750	800	150	1277							
	315 L	160	230x82x14	B-200					315	260	2064	2200	1740	870	770	820	115	1523							
200	250	2204							2300	1840	920	180	1098												

Dimensions for motor with enclosure IP-55 , make of motor to our choice

(1) Intermediate piece optional

Foundation Plan for units with spacer type coupling



n=2900 rpm

Dimensions in mm., general tolerances (bedplates) for cast parts to DIN 1686/ GTB 17, for welded parts to DIN 8570 B

Pump size	Motor		Base-plate	Coupling	Pump-motor references							Base-plate references							Bolts	Weight set														
	Size	kW.			a	i (2)	h1	h2	h6	f1	W *	W1	V	+V	V1	W2	h3	P1			P2	c	x											
3216	90 S	1,5	S 017	H-80	80	132	160	90	977	1100	700	325	361	60	42	25	M12x150	95																
	90 L	2,2						100	1018									105	32	98														
	100 L	3						112	1039									105	20	105														
	112 M	4						132	80									1099	1020	660	—	30	M20x400	135										
132 S	5,5	S 344	H-95	132				80	1099	1020	660	400	450	80	—	30	M20x400	145																
132 S	7,5			100				110	1013	1100	700	325	361	60	60	25	M12x150	112																
3220	100 L	3	S 017	H-80				80	132	160	112	1034	1100	700	325	361	60	28	30	M20x400	112													
	112 M	4									132	80									1094	1020	660	400	450	80	28	30	M20x400	142				
	132 S	5,5	S 344	H-95	160	80	1228				1140	740									440	490	—	—	—	—	—	—	190					
	160 M	11			100	125	1008				1100	700									325	361	60	60	25	M12x150	105							
4016	100 L	3	S 017	H-80	90	160	180				112	1029	1100	700	325	361	60	48	25	M12x150	112													
	112 M	4									132	75									1089	1020	660	400	450	80	28	30	M20x400	137				
	132 S	5,5									S 344	H-95									160	75	1223	1140	740	440	490	—	—	—	—	—	—	147
	160 M	11																			100	125	1008	1100	700	325	361	60	60	25	M12x150	105		
4020	100 L	2,2	S 017	H-80				90	160	180	112	1029	1100	700	325	361	60	70	25	M12x150	108													
	100 L	3									132	75									1089	1020	660	400	450	80	28	30	M20x400	146				
	112 M	4									160	75									1223	1140	740	440	490	80	—	—	—	—	—	—	156	
	132 S	5,5									S 385	H-95									160	75	1223	1140	740	440	490	80	—	—	—	—	—	193
160 M	11	112	110	1039	1020	660	400						450	—	—	—	—	—	—	—	206													
5016	112 M	4	S 344	H-80	100	200	200				132	1099	1020	660	400	450	—	28	30	M20x400	128													
	132 S	5,5									160	75									1233	1140	740	440	490	80	68	25	M12x150	115				
	160 M	11									112	125									1146	1100	700	325	361	60	60	25	M12x150	122				
	160 L	18,5						132	75	1206	1020	660									400	450	80	28	30	M20x400	146							
5020	112 M	4	S 385	H-95				112	200	180	160	90	1270	840	490	540	—	20	—	—	165													
	132 S	5,5									112	125									1146	1100	700	325	361	60	60	25	M12x150	115				
	160 M	11									132	75									1206	1020	660	400	450	80	48	30	M20x400	178				
	160 L	18,5									160	90									1340	1270	840	490	540	—	—	—	—	—	—	—	188	
5026	180 M	22	S 436	H-110	125	200	250				180	1464	1420	940	550	610	100	20	—	—	220													
	200 L	30									200	130									1522	1420	940	550	610	100	20	—	—	—	—	—	233	
	160 M	11									160	90									1353	1270	840	490	540	80	—	40	30	M20x400	250			
	160 L	18,5									180	90									1477	1270	840	490	540	80	—	20	30	M20x400	265			
5026	180 M	22	S 487	H-125				125	200	250	200	130	1420	940	550	610	100	25	—	—	348													
	200 L	30									200	130									1535	1420	940	550	610	100	25	—	—	—	—	—	369	
	225 M	45									225	125									1542	1600	1060	670	730	—	—	—	—	—	—	—	—	392
	250 M	55									250	160									1695	1600	1060	670	730	100	50	—	—	—	—	—	—	421

Dimensions for motor with enclosure IP-55 , make of motor to our choice

(1) Intermediate piece optional

Foundation Plan for units with spacer type coupling

n=2900 rpm

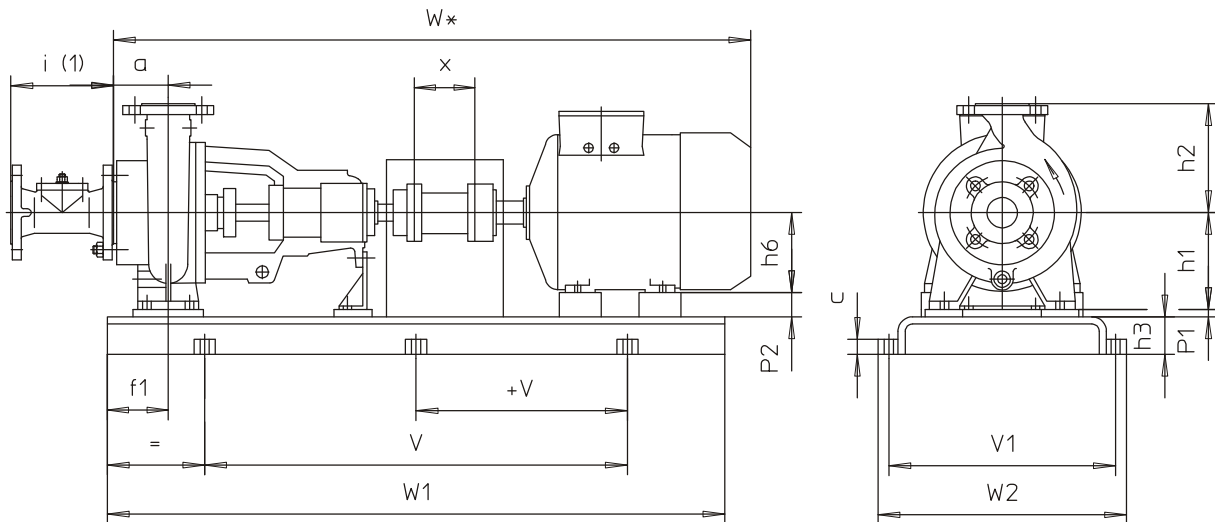
Dimensions in mm.,general tolerances (bedplates) for cast parts to DIN 1686/GTB 17,for welded parts to DIN 8570 B

Pump size	Motor		Base-plate	Coupling	Pump-motor references							Base-plate references										Bolts	Weight set
	Size	kW.			a	i (2)	h1	h2	h6	f1	W *	W1	V	+V	V1	W2	h3	P1	P2	c	x		
6520	132 S	7,5	S 385	H-95	125	200	180	225	132	115	1219	1140	740	440	490	80	—	48	30	30	M20x400	195	
	160 M	11	S 436						H-110	160	90	1353	1270									840	490
	160 L	18,5		H-125						180		1477											
	180 M	22							H-110	200	135	1535											
	200 L	30		H-110						225	125	1542											
	225 M	45	H-110						180	150	1532	1420	940	550	610		100	45				—	407
180 M	22	S 487		H-125	130	250	225	280	200	105	1590										341		
200 L	30		H-140						225		1597									414			
225 M	45	H-160		250					155	1750	1600	1060	670	730		25	—	40	443				
250 M	55		H-160	280					185	1825	1950	1570	785	700	750	140	85	30	20	674			
280 S	75	H-160		315						1930	2050	1630	815	770	820		120			907			
280 M	90		H-125	200					105	1600	1420	940	—	550	610	100	—	25	35	947			
315 S	110	S 608		H-140	225		1607									1135							
250 M	55		S 608		H-140	250	155	1760	1600	1060	670	730		25	—	40	406						
280 S	75	S 608		H-140		280	185	1835	1950	1570	785	700	750	140	85	30	20	429					
280 M	90		S 608		H-140	315		1940	2050	1630	815	770	820		120			458					
315 S	110	S 608		H-140		200	105	1600	1420	940	—	550	610	100	—	25	35	694					
200 L	30		S 608		H-140	225		1607										922					
225 M	45	S 608		H-140		250	155	1760	1600	1060	670	730		25	—	40	962						
250 M	55		S 608		H-140	280	185	1835	1950	1570	785	700	750	140	85	30	20	1150					
280 S	75	S 608		H-140		315		1940	2050	1630	815	770	820		120								
280 M	90		S 608		H-140	200	105	1600	1420	940	—	550	610	100	—	25	35	406					
315 S	110	S 608		H-140		225		1607										429					
200 L	30		S 608		H-140	250	155	1760	1600	1060	670	730		25	—	40	458						
225 M	45	S 608		H-140		280	185	1835	1950	1570	785	700	750	140	85	30	20	694					
250 M	55		S 608		H-140	315		1940	2050	1630	815	770	820		120			922					
280 S	75	S 608		H-140		200	105	1600	1420	940	—	550	610	100	—	25	35	962					
280 M	90		S 608		H-140	225		1607										1150					
315 S	110	S 608		H-140		250	155	1760	1600	1060	670	730		25	—	40							

Dimensions for motor with enclosure IP-55 , make of motor to our choice

(1) Intermediate piece optional

Foundation Plan for units with spacer type coupling



n=1450 rpm

Dimensions in mm.,general tolerances (bedplates) for cast parts to DIN 1686/GTB 17,for welded parts to DIN 8570 B

Pump size	Motor		Base-plate	Coupling	Pump-motor references								Base-plate references								Bolts	Weight set
	Size	kW.			a	<i>i</i> (2)	h1	h2	h6	f1	W *	W1	V	+V	V1	W2	h3	P1	P2	c		
3216	71	0,25	S 015	H-80	80	132	160	71	885	920	600	50	42	80	25	M12x150	140	79				
		80						919										80	82			
	80	0,55						80	80									914	80	87		
		0,75						90	70									977	90	90		
3220	80	0,55	S 017			H-80	80	180	180	80	885	1100	700	325	361	60	80	25	M12x150	89		
		80								914										80	91	
	90 S	1,1								90	70									972	90	94
		0,75								90	70									972	90	94
4016	80	0,55	S 015	H-80	90			160	160	80	885	920	600	50	70	25	M12x150	140	97			
		80								909									80	97		
	90 S	1,1								90	80								967	90	98	
		0,75								90	80								967	90	98	
4020	80	0,55	S 015			H-80	90	160	160	80	885	920	600	50	70	25	M12x150	140	99			
		80								909									80	99		
	90 S	1,1								90	80								967	90	99	
		0,75								90	80								967	90	99	
5016	80	0,55	S 303	H-80	100			200	200	80	885	920	600	350	390	65	80	30	M16x250	107		
		80								919										80	107	
	90 S	1,1								90	80									977	90	107
		0,75								90	80									977	90	107
5020	80	0,55	S 344			H-80	100	200	200	80	885	1020	660	400	450	60	90	30	M16x250	109		
		80								919										80	109	
	90 S	1,1								90	80									1084	90	109
		0,75								90	80									1084	90	109
5026	80	0,55	S 385	H-80	112			180	180	80	885	1020	660	400	450	60	90	30	M16x250	117		
		80								919										80	117	
	90 S	1,1								90	80									1084	90	117
		0,75								90	80									1084	90	117
5032	80	0,55	S 435			H-95	112	180	180	80	885	1020	660	400	450	60	90	30	M16x250	119		
		80								919										80	119	
	90 S	1,1								90	80									1084	90	119
		0,75								90	80									1084	90	119
5032	80	0,55	S 436	H-95	112			180	180	80	885	1020	660	400	450	60	90	30	M16x250	121		
		80								919										80	121	
	90 S	1,1								90	80									1084	90	121
		0,75								90	80									1084	90	121
5032	80	0,55	S 487			H-110	125	200	250	100	885	1140	740	440	490	80	100	35	M20x400	123		
		80								919										80	123	
	90 S	1,1								90	125									1138	90	123
		0,75								90	125									1138	90	123
5032	80	0,55	S 435	H-110	125			200	250	100	885	1140	740	440	490	80	100	35	M20x400	125		
		80								919										80	125	
	90 S	1,1								90	125									1138	90	125
		0,75								90	125									1138	90	125
5032	80	0,55	S 436			H-110	125	200	250	100	885	1140	740	440	490	80	100	35	M20x400	127		
		80								919										80	127	
	90 S	1,1								90	125									1138	90	127
		0,75								90	125									1138	90	127
5032	80	0,55	S 487	H-110	125			200	250	100	885	1140	740	440	490	80	100	35	M20x400	129		
		80								919										80	129	
	90 S	1,1								90	125									1138	90	129
		0,75								90	125									1138	90	129
5032	80	0,55	S 435			H-110	140	225	280	112	885	1224	840	490	540	100	35	M24x400	131			
		80								919									80	131		
	90 S	1,1								90	140								1224	90	131	
		0,75								90	140								1224	90	131	
5032	80	0,55	S 436	H-110	140			225	280	112	885	1224	840	490	540	100	35	M24x400	133			
		80								919									80	133		
	90 S	1,1								90	140								1224	90	133	
		0,75								90	140								1224	90	133	
5032	80	0,55	S 487			H-110	140	225	280	112	885	1224	840	490	540	100	35	M24x400	135			
		80								919									80	135		
	90 S	1,1								90	140								1224	90	135	
		0,75								90	140								1224	90	135	
5032	80	0,55	S 487	H-125	140			225	280	112	885	1224	840	490	540	100	35	M24x400	137			
		80								919									80	137		
	90 S	1,1								90	140								1224	90	137	
		0,75								90	140								1224	90	137	
5032	80	0,55	S 487			H-125	140	225	280	112	885	1224	840	490	540	100	35	M24x400	139			
		80								919									80	139		
	90 S	1,1								90	140								1224	90	139	
		0,75								90	140								1224	90	139	
5032	80	0,55	S 487	H-125	140			225	280	112	885	1224	840	490	540	100	35	M24x400	141			
		80								919									80	141		
	90 S	1,1								90	140								1224	90	141	
		0,75								90	140								1224	90	141	
5032	80	0,55	S 487			H-125	140	225	280	112	885	1224	840	490	540	100	35	M24x400	143			
		80								919									80	143		
	90 S	1,1								90	140								1224	90	143	
		0,75								90	140								1224	90	143	
5032	80	0,55	S 487	H-125	140			225	280	112	885	1224	840	490	540	100	35	M24x400	145			
		80								919									80	145		
	90 S	1,1								90	140								1224	90	145	
		0,75								90	140								1224	90	145	
5032	80	0,55	S 487			H-125	140	225	280	112	885	1224	840	490	540	100	35	M24x400	147			
		80								919									80	147		
	90 S	1,1								90	140								1224	90	147	
		0,75								90	140								1224	90	147	
5032	80	0,55	S 487	H-125	140			225	280	112	885	1224	840	490	540	100	35	M24x400	149			
		80								919									80	149		
	90 S	1,1								90	140								1224	90	149	
		0,75								90	140								1224	90	149	
5032	80	0,55	S 487			H-125	140	225	280	112	885	1224	840	490	540	100	35	M24x400	151			
		80								919									80	151		
	90 S	1,1								90	140								1224	90	151	
		0,75								90	140								1224	90	151	
5032	80	0,55	S 487	H-125	140			225	280	112	885	1224	840	490	540	100	35	M24x400	153			
		80								919									80	153		
	90 S	1,1								90	140								1224	90	153	
		0,75								90	140								1224	90	153	
5032	80	0,55	S 487			H-125	140	225	280	112	885	1224	840	490	540	100	35	M24x400	155			
		80								919									80	155		
	90 S	1,1								90	140								1224	90	155	
		0,75								90	140								1224	90	155	
5032	80	0,55	S 487	H-125	140			225	280	112	885	1224	840	490	540	100	35	M24x400	157			
		80								919									80	157		
	90 S	1,1								90	140								1224	90	157	
		0,75								90	140								1224	90	157	
5032	80	0,55	S 487			H-125	140	225	280	112	885	1224	840	490	540	100	35	M24x400	159			
		80								919									80	159		
	90 S	1,1								90	140								1224	90	159	
		0,75								90	140								1224	90	159	
5032	80	0,55	S 487	H-125	140			225	280	112	885	1224	840	490	540	100	35	M24x400	161			
		80								919									80	161		
	90 S	1,1								90	140								1224	90	161	
		0,75								90	140								1224	90	161	
5032	80	0,55	S 487			H-125	140	225														

Foundation Plan for units with spacer type coupling

n=1450 rpm

Dimensions in mm.,general tolerances (bedplates) for cast parts to DIN 1686/GTB 17,for welded parts to DIN 8570 B

Pump size	Motor		Base-plate	Coupling	Pump-motor references								Base-plate references								Bolts	Weight set																				
	Size	kW.			a	i (2)	h1	h2	h6	f1	W *	W1	V	+V	V1	W2	h3	P1	P2	c			x																			
6520	90 L	1,5	S 385	H-95	125	200	180	225	90		1097	1140	740	440	490	80			90	30		M20x400	158																			
	100 L	2,2							100	125	1138								80				166																			
	112 M	4							112		1159								68				168																			
	132 S	5,5							132	90	1219								48				173																			
	132 M	7,5							132														187																			
																							198																			
8026	100 L	3	S 486	H-110	130		225	280	100		1193	1250	840	550	610			125	40		M24x400	229																				
	112 M	4							112	175	1214							113				234																				
	132 S	5,5							132	130	1274							93				248																				
	132 M	7,5							132													259																				
	160 M	11	S 487						160	150	1408	65	316																													
	160 L	15							180		1532	45	335																													
	180 M	18,5							132	130	1269	118	291																													
	132 S	5,5							132				302																													
8032	132 M	7,5	S 486	H-110	125	250	315	160	150	1403	1420	940	550	610				90	40		M24x400	342																				
	160 M	11																180				125	1527	70	359																	
	160 L	15	S 487															180					1585	50	378																	
	180 M	18,5																200				110	1585	120	392																	
	180 L	22																160				180	1538	80	436																	
	200 L	30																180				140	1662	100	458																	
8040	160 M	11	S 538	H-125	250	280	355	160	180	1538	1620	1060	600	660	100			120	35		M24x400	475																				
	180 M	18,5																180				140	1662	80	494																	
	180 L	22																200					1720	55	508																	
	200 L	30																225				125	1757	113	552																	
	225 S	37	S 486					H-110	140	225	280	112						150	1224			1250	840	550	610				93	40		M24x400	249									
	132 S	5,5																											132				130	1284	65	263						
	132 M	7,5																											160				140	1418	45	274						
	160 M	11																											180				125	1542	118	314						
10026	160 L	15	S 487	H-125	250	315	132					130	1284	1250	840	1420	940	550	610			90	35							M24x400			331									
	180 M	18,5																				180											125	1542	70	350						
	180 L	22																				200											100	1600	50	367						
	200 L	30																				225											125	1637	125	387						
	10032	225 S	37					S 538	H-140	170	280											355	280	235	2025	2150	1730	865			700	750	140	30	65	20		M16x250	1122			
		132 M	7,5																																180				150	1732	135	539
		160 M	11																																200				130	1790	115	583
		160 L	15																																225				170	1827	90	649
12540		180 M	18,5	S 608	H-125	170	280	315				225	170	1827	1820	1200	670	730					90	40		M16x250	669															
		225 S	37																				250					1950	250	872												
		225 M	45																				280				235	2025	2150	1730	865											
		250 M	55																				280				235	2025	2150	1730	865											
	12550	280 S	75	215x75x14					H-180	170	280	355	200	200	1840	2200						1740	870	700			750	140	30	65	20		M16x250	1172								
		280 M	90																											225				170	1877	1820	1200	670				
		200 L	30																											250				150	2000	225	170	1877				
		225 S	37																											250				150	2000	225	170	1877				
15032		225 M	45	S 609	H-160	170	280	355					280	235	2210	2350	1890	945	770	820	140	30	105	20		M16x250	1263															
		250 M	55																				280				235	2025	2150	1730	865											
		280 S	75																				280				235	2025	2150	1730	865											
		280 M	90																				280				235	2025	2150	1730	865											
	15032	315 S	110	235x82x14					H-200	170	280	355	235	235	2210	2350	1890	945	770	820	140	30	70	20				M16x250	1313													
		315 M	132																				2350						2500	2000	1000	770	820									
		315 L	160																				2350						2500	2000	1000	770	820									
		200 L	30																				2350						2500	2000	1000	770	820									
15032		225 S	37	S 607	H-125	170	280	355					132	130	1474	1400	940	670	730	100			148	40		M24x400			426													
		160 M	11																				160						170	1608	120	463										
		160 L	15																				180						140	1732	100	480										
		180 M	18,5																				200						130	1790	80	499										
	15032	200 L	30	S 609					H-140	170	280	355	225	170	1827	1820	1200						670	730			100			55	40		M24x400	513								
		225 S	37																											225				170	1827	1820	1200	670				
		200 L	30																											225				170	1827	1820	1200	670				
		225 M	45																											225				170	1827	1820	1200	670				

Dimensions for motor with enclosure IP-55 , make of motor to our choice

(1) Intermediate piece optional

Foundation Plan for units with spacer type coupling

n=1450 rpm

Dimensions in mm.,general tolerances (bedplates) for cast parts to DIN 1686/GTB 17,for welded parts to DIN 8570 B

Pump size	Motor		Base-plate	Coupling	Pump-motor references							Base-plate references										Bolts	Weight set																									
	Size	kW.			a	i (2)	h1	h2	h6	f1	W *	W1	V	+V	V1	W2	h3	P1	P2	c	x																											
20032	160 L	15	S 608	H-125	200	300	315	450	160	150	1638	1600	1060	—	670	730	100	—	155	40	180	M24x400	503																									
	180 M	18,5							180	140	1762								135				522																									
	180 L	22							200	200	1820	115	536																																			
	200 L	30	S 609	H-140					225	200	1857	1820	1200						90				598																									
	225 S	37							250	170	1980	65	666																																			
	225 M	45							280	275	2055	2200	1740						870				700	750	140	30	20	879																				
	250 M	55	220x75x14	H-180					355	500	250	300	275						2105				2250	1790	895	700	750	140	30	105	20	180	M16x250	1121														
	280 S	75																																180	200	1812	175	658										
280 M	90	225x75x14	H-180	200	200	1870	1820	1200						—	670	730	100	—		130	40	747																										
315 S	110			225	170	1907	250	150						2030	2240	2400	1900	950		770	820	70												767														
315 M	132			280	280	2105	2250	1790						895	700	750	105	1221																														
20040	250 M	55	240x82x14	H-200	400	530	250	300						275	2105	2250	1790	895		750	800	140												30	180	20	180	M16x250	1271									
	280 S	75																																					280	280	2105	2250	1790	895	750	800	150	1271
	280 M	90	255x82x14	H-200																																			2240	2400	1900	950	770	820	70	1460		
	315 S	110							2380	2550	2050	1025	1700																																			
	315 M	132							2380	2550	2050	1025	770						820				115	1540																								
	20050	315 L	160	255x82x14					H-200	400	530	250	300						275				2105	2250	1790	895	750	800	140	30	180	20	180						M16x250	1700								
		250 M	55																																					225x80x14	H-180	280	2105	2250	1790	895	750	800
		280 S	75	240x82x14					H-200																															2240		2400	1900	950	770	820	115	1307
280 M		90	2380		2550	2050	1025	770						820	115	1357																																
315 S		110	2240		2400	1900	950	770						820	115	1545																																
315 M		132	255x82x14	H-200	2380	2550	2050	1025	770					820	115	1625																																
315 L		160			2380	2550	2050	1025	770					820	115	1805																																
200		200																																				1945										

Dimensions for motor with enclosure IP-55 , make of motor to our choice

(1) Intermediate piece optional

Product identification

Series + sizes	Impeller type	Hydraulic	Bearing	Shaft sealing	Material	Casing design
	D triple channel impeller Z double channel impeller F free-flow impeller	A	B: Pump end: one cylindrical roller bearing to DIN 5412 Drive end: one deep groove ball bearing to DIN 625 grease lubrication C: Pump end: one cylindrical roller bearing to DIN 5412 Drive end: one deep groove ball bearing to DIN 625 oil lubrication S: Pump end: one cylindrical roller bearing to DIN 5412 Drive end: two angular contact ball bearings in O-arrangement. grease lubrication T: Pump end: one cylindrical roller bearing to DIN 5412 Drive end: two angular contact ball bearings in O-arrangement. oil lubrication	051* 052 071 BKS BKW	0B main parts of cast iron 0E main part of cast iron, but impeller, wear plate of stainless steel 4B main parts of stainless steel	B with wear plate C without wear plate
DBSA	03216 03220 04016 04020 05016 05020 05026 05032 06520 08026 08032 08040 10026 10032 12540 12550 15032 20032 20040 20050 30040	F D/F Z/F D/F Z/F Z Z/F D/F D	B, C S, T	Alternativ 051 052 071** BKS BKW	Alternativ 0B 0E 4B	C B

* see page 2 under shaft sealing

** not valid for sizes 3216 and 3220

If we are informed of the motor type being selected, the coupling can be supplied already drilled on motor side and we can supply the coupling guard and the shims for equalizing out the centre height.

STERLING

