

Localization and characterization of acid phosphatase activity in *Bonamia ostreae* (Asctospora), an intrahemocytic protozoan parasite of the flat oyster *Ostrea edulis* (Bivalvia)

D. Hervio, D. Chagot, P. Godin, H. Grizel, E. Mialhe

IFREMER, Laboratoire de Biologie et d'Ecologie des Invertébrés Marins, Unité de Recherche en Pathologie, Immunologie et Génétique Moléculaire, BP 133, F-17390 La Tremblade, France

ABSTRACT: Acid phosphatase activity was cytochemically detected at the ultrastructural level in the protozoan *Bonamia ostreae*, an intrahemocytic parasite of the flat oyster *Ostrea edulis*. Lead nitrate was used as capture agent for phosphate liberated during the hydrolysis of the substrate (cytidine 5' monophosphate). Lead phosphate precipitation, indicative of enzyme activity, was located in membrane-bound organelles corresponding to the cytoplasmic inclusions known as 'dense bodies'. Acid phosphatase activity level and sodium L-tartrate inhibition were measured spectrophotometrically from a purified parasite suspension. The possible involvement of this enzyme in intracellular survival of *B. ostreae* is discussed.

INTRODUCTION

The parasitic protozoan *Bonamia ostreae* is the etiological agent of bonamiasis, or hemocytic disease, of the flat oyster *Ostrea edulis* (Bivalvia). It multiplies within a parasitophorous vacuole inside the hemocytes of its host. Most studies concerning defense reactions in molluscs assign a role of prime importance to hemocytes (Cheng 1981, Sminia & Van Der Knaap 1987). These cells carry out phagocytic activities and possess enzymes involved in superoxide-dependent killing and intracellular degradation. These characteristics are similar to those of vertebrate macrophages. Thus, *B. ostreae*-hemocyte interactions may be compared to parasite-macrophage interactions known in human and veterinary parasitology for protozoans such as *Leishmania*, *Trypanosoma* or *Toxoplasma*. Research done on parasitization of mammalian macrophages by such parasites has demonstrated the existence of several adaptive mechanisms for survival in an immunocompetent cell (Edelson 1982, Mauël 1984, Alexander & Russel 1985, Zingales & Colli 1985). Among others, promastigote acid phosphatase, described by Gottlieb & Dwyer (1981a) and isolated by Glew et al. (1982) from *Leishmania donovani*, is cap-

able of inhibiting the production of superoxide anions by human neutrophils. These findings provided a possible explanation for how the intracellular parasite escapes inactivation by the host cell (Remaley et al. 1984).

In the present study, we report the localization and characterization of acid phosphatase activity in the intrahemocytic parasite *Bonamia ostreae*.

MATERIALS AND METHODS

Parasites. Purified parasitic cell suspensions were obtained from parasitized flat oyster tissues, according to the protocol of Mialhe et al. (1988). Parasites were counted using a hemocytometer Malassez cell at 200× magnification.

Cytochemistry. Parasite suspensions in filtered seawater were fixed by brief exposure to 2% glutaraldehyde solution (v/v) buffered with 0.1 M sodium cacodylate-HCl, pH 7.4 (1 h at 4°C), then rinsed 3 times in cacodylate buffer. Osmolarity of all solutions was adjusted to 1000 mOsmol with sucrose.

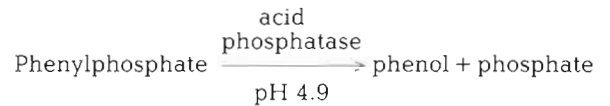
For light microscopic detection of acid phosphatase activity, the azo dye staining method of Barka & Ander-

son (1963) was used. Parasites were incubated 1 h at 37°C in a *Bonamia ostreae*/acid phosphatase activity medium containing 20% sucrose (naphtol AS.MX phosphate, disodium salt, 40 mg; N.N dimethyl formamide, 4 ml; 0.2 M acetic acid-sodium acetate buffer, pH 5.0, 20 ml; distilled water, 48 ml), to which was added a mixture of 3.2 ml of 4% pararosanilin and 3.2 ml of 4% sodium nitrite. The pH was adjusted to 5.0.

For electron microscopic detection, the fixed parasitic suspensions were incubated for 1 h 30 min at 37°C in Novikoff's medium (1963) containing 20% sucrose and formulated as follows: cytidine 5' monophosphate, 25 mg; distilled water, 12 ml; 0.05 M acetate buffer, pH 5.0, 10 ml; 1% lead nitrate, 3 ml. Cells were rinsed in 0.05 M acetate buffer-sucrose, then in 0.1 M cacodylate buffer, and post-fixed with 1% osmium tetroxide for 30 min, immobilized in agarose, dehydrated and embedded in Epon 812. Ultrathin sections were obtained and observed without staining, using a Jeol 1200 CX electron microscope.

Colorimetric determination of acid phosphatase activity. For colorimetric determination, the homogenate from a purified parasite suspension was used as a crude preparation of acid phosphatase. This suspension, containing ca 100×10^6 parasites ml^{-1} , was frozen and thawed. It was incubated for 1 h at 37°C in 0.2 M citrate buffer at pH 4.9, and 10 mM disodium phenylphosphate in a final volume of 1 ml, then mixed and incubated for 10 min in the dark in a solution containing 30 mM amino-4-antipyrine, 120 mM sodium arsenate (1 ml), and 75 mM potassium ferricyanide (1 ml).

Total acid phosphatase activity was determined according to the following reaction:



The phenol liberated was measured in the presence of reagents of the solution previously described. Sodium arsenate stopped the enzymatic reaction. After incubation, the amount of phenol liberated was determined spectrophotometrically at 510 nm. Resulting acid phosphatase activity units were expressed as nanomoles of phenol produced per minute per 10^6 cells.

The inhibition of this activity was also measured after adding 0.05 ml 1 M sodium L-tartrate to a sample before its incubation for 1 h at 37°C.

RESULTS

Cytochemistry

Light microscopic examination of purified parasitic suspensions incubated in naphtol AS.MX as substrate and diazotized pararosanilin as coupling agent for the enzymatically liberated naphtol led to the appearance of a brownish reaction product condensed in a relatively large granule.

At the ultrastructural level, electron-dense deposits of lead phosphate, indicative of acid phosphatase activity, were found in membrane-bound organelles (Fig. 1)

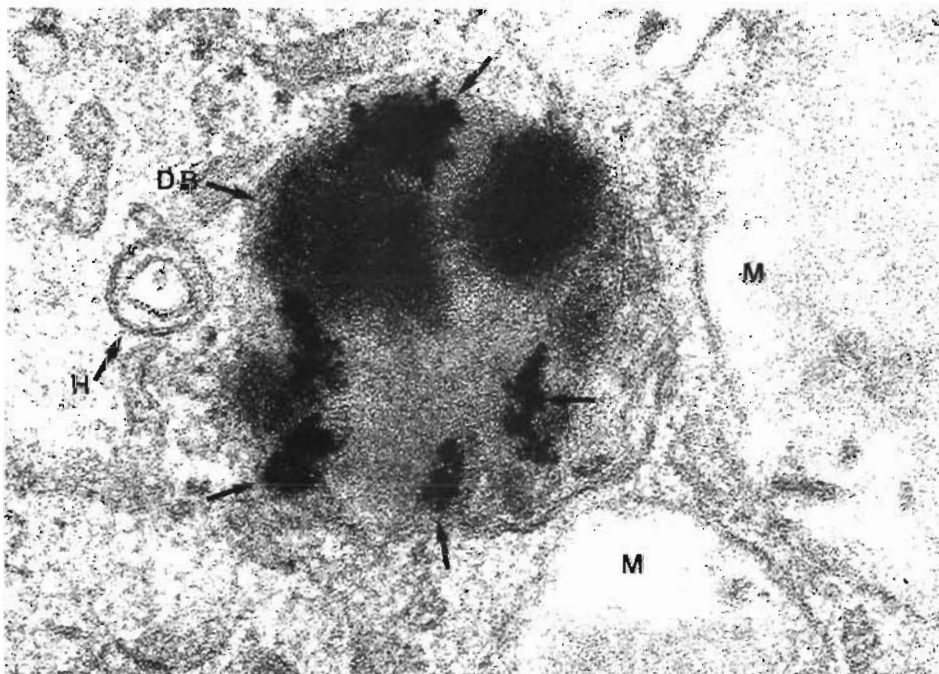


Fig. 1. *Bonamia ostreae*. Electron micrograph showing lead precipitation (arrows) occurring in 'dense bodies' (DB) in the presence of acid phosphatase. H: haplosporosome; M: mitochondria. (150000 ×)

corresponding to the spherical, more or less electron-dense cytoplasmic inclusions known as 'dense bodies' when observed using morphological techniques (Fig. 2). No lead phosphate precipitation occurred in mitochondria or haplosporosomes. No reaction product could be demonstrated to be associated with the plasma membrane of the parasite. No deposition was seen when the parasites were incubated in a medium lacking substrate.

Spectrophotometric analysis

Acid phosphatase activity of frozen and thawed *Bonamia ostreae*, as determined by colorimetric assay, was evaluated at 2×10^2 nmol min⁻¹ per 10⁶ cells. Use of 1 M sodium L-tartrate in the incubating medium strongly inhibited this activity. Inhibition was determined to be 87 %.

DISCUSSION

This evidence of acid phosphatase activity in *Bonamia ostreae* is new among the Ascetospora. Cytochemical localization of this activity in the 'dense bodies' raises questions concerning the role of these organelles and their development. Although this enzyme is considered as a lysosome-marker, it has an extra-lysosomal distribution in several tissues. Additional

hydrolytic enzymatic activities should be demonstrated in the 'dense bodies' before considering them to be lysosome-like. The intracellular distribution, restricted to the dense granules, limits our understanding of the origin of the acid phosphatase, site of glycosylation and intracellular delivery pathways. Such a location makes it difficult to understand the possible role of *Bonamia ostreae* acid phosphatase in disease pathogenesis when compared with leishmanial activities. In these trypanosomatids, acid phosphatase is secreted or shed extracellularly (Lovelace et al. 1986), or less frequently, is distributed on the surface of cells and located on the external side of membranes (Gottlieb & Dwyer 1981b). It has been proposed that the membrane-bound acid phosphatase of *Leishmania donovani* alters the host's cell function, based on the observation of diminished superoxide production by macrophages incubated with enzyme purified from the parasite (Remaley et al. 1984). This might indicate a contribution of acid phosphatase to survival of the parasite by interfering with host oxygen-dependent killing mechanisms. In spite of a different distribution pattern of acid phosphatase activity in *B. ostreae*, spectrophotometric determination indicated that the level of this activity is equivalent to levels found in several *Leishmania* species (Lovelace & Gottlieb 1986). As in most *Leishmania* species, the acid phosphatase activity in *B. ostreae* is highly sensitive to inhibition by sodium L-tartrate (Lovelace & Gottlieb 1986). Interference of *B. ostreae* with production of



Fig. 2. *Bonamia ostreae* infecting *Ostrea edulis*. Ultrathin section of naturally infected oyster hemocyte, after double staining with aqueous solutions of lead citrate and uranyl acetate. Hem: hemocyte; Par: parasite; DB: dense body. (38000 ×)

toxic free oxygen radicals by hemocytes has been demonstrated (Hervio et al. 1988, Jean-Chagot 1989). The acid phosphatase activity in *B. ostreae* needs to be analyzed in order to clarify its biological role. Inhibition of hemocytic superoxide anion production by purified enzyme should be measured in a superoxide-dismutase-inhibitable cytochrome c reduction assay. Many important cellular processes other than phagocytic events are controlled by phosphorylation-dephosphorylation of proteins.

Understanding of the physiologic and physiopathologic properties of *Bonamia ostreae* acid phosphatase might allow a better knowledge not only about the particular hemocyte-parasite interplay, but also about parasite-associated phosphatase modifications of host cell metabolism in general. Finally, based on information acquired for vertebrate macrophage parasites, it will be necessary to look for other parasitic components like catalase and peroxidase which might be involved in host-parasite relationships.

LITERATURE CITED

- Alexander, J., Russel, D. G. (1985). Parasite antigens, their role in protection, diagnosis and escape: the leishmaniasis. *Curr. Topics Microbiol. Immunol.* 120: 43-67
- Barka, T., Anderson, P. (1963). *Histochemistry: theory, practice and bibliography*. New York, Harper and Row
- Cheng, T. C. (1981). Bivalves. In: Ratcliffe, N. A., Rowley, A. F. (eds.) *Invertebrate blood cells*. Academic Press, London, p. 233-300
- Edelson, P. J. (1982). Intracellular parasites and phagocytic cells. *Cell biology and pathophysiology. Rev. infect. Dis.* 4(1): 124-135
- Glew, R. H., Czuczman, M. S., Diven, W. F., Berens, R. L., Pope, M. T., Katsoulis, D. E. (1982). Partial purification and characterization of particulate acid phosphatase of *Leishmania donovani* promastigotes. *Comp. Biochem. Physiol.* 72B: 29-42
- Gottlieb, M., Dwyer, D. M. (1981a). *Leishmania donovani* surface membrane acid phosphatase activity of promastigotes. *Expl. Parasit.* 52: 117-128
- Gottlieb, M., Dwyer, D. M. (1981b). *Leishmania donovani*, protozoan parasite of humans: surface membrane with externally disposed acid phosphatase. *Science* 212: 939-941
- Hervio, D., Bachère, E., Mialhe, E., Grizel, H. (1988). Chemiluminescent responses of *Ostrea edulis* and *Crassostrea gigas* hemocytes to *Bonamia ostreae* (Ascomycota). *Devl. comp. Immun.* 13(4): 449
- Jean-Chagot, D. (1989). Caractérisation morphologique et fonctionnelle des hémocytes d'*Ostrea edulis* et de *Crassostrea gigas*, Mollusques Bivalves. Etude *in vitro* de leurs interactions avec le protozoaire *Bonamia ostreae* (Ascomycota). Thèse, Ecole Pratique des Hautes Etudes, Université de Montpellier
- Lovelace, J. K., Dwyer, D. M., Gottlieb, M. (1986). Purification and characterization of the extracellular acid phosphatase of *Leishmania donovani*. *Molec. Biochem. Parasit.* 20: 243-251
- Lovelace, J. K., Gottlieb, M. (1986). Comparison of extracellular acid phosphatase from various isolates of *Leishmania*. *Am. J. trop. Med. Hyg.* 35 (6): 1121-1128
- Mauël, J. (1984). Mechanisms of survival of protozoan parasites in mononuclear phagocytes. *Parasitology* 88: 579-592
- Mialhe, E., Bachère, E., Chagot, D., Grizel, H. (1988). Isolation and purification of the protozoan *Bonamia ostreae* (Pichot et al. 1980), a parasite affecting the flat oyster *Ostrea edulis* L. *Aquaculture* 71: 293-299
- Novikoff, A. B. (1963). Lysosomes in the physiology and pathology of cells: contribution of staining methods. In: Renck, Cameron (eds.) *Ciba Found. Symp. Lysosomes*. J. A. Churchill, London, p. 36-77
- Remaley, A. T., Kuhns, D. B., Basford, R. E., Glew, R. H., Kaplan, S. S. (1984). Leishmanial phosphatase blocks neutrophil O₂-production. *J. biol. Chem.* 259(18), 1173-1175
- Sminia, T., Van Der Knaap, W. P. W. (1987). Cells and molecules in molluscan immunology. *Devl. comp. Immun.* 11: 17-28
- Zingales, B., Colli, W. (1985). *Trypanosoma cruzi*: interaction with host cells. *Curr. Topics Microbiol. Immunol.* 117: 129-152

Responsible Subject Editor: A. K. Sparks, Seattle, Washington, USA

Manuscript first received: December 28, 1990
Revised version accepted: July 22, 1991