

*The following supplement accompanies the article*

## **Rocky islands in a sea of mud: biotic and abiotic factors structuring deep-sea dropstone communities**

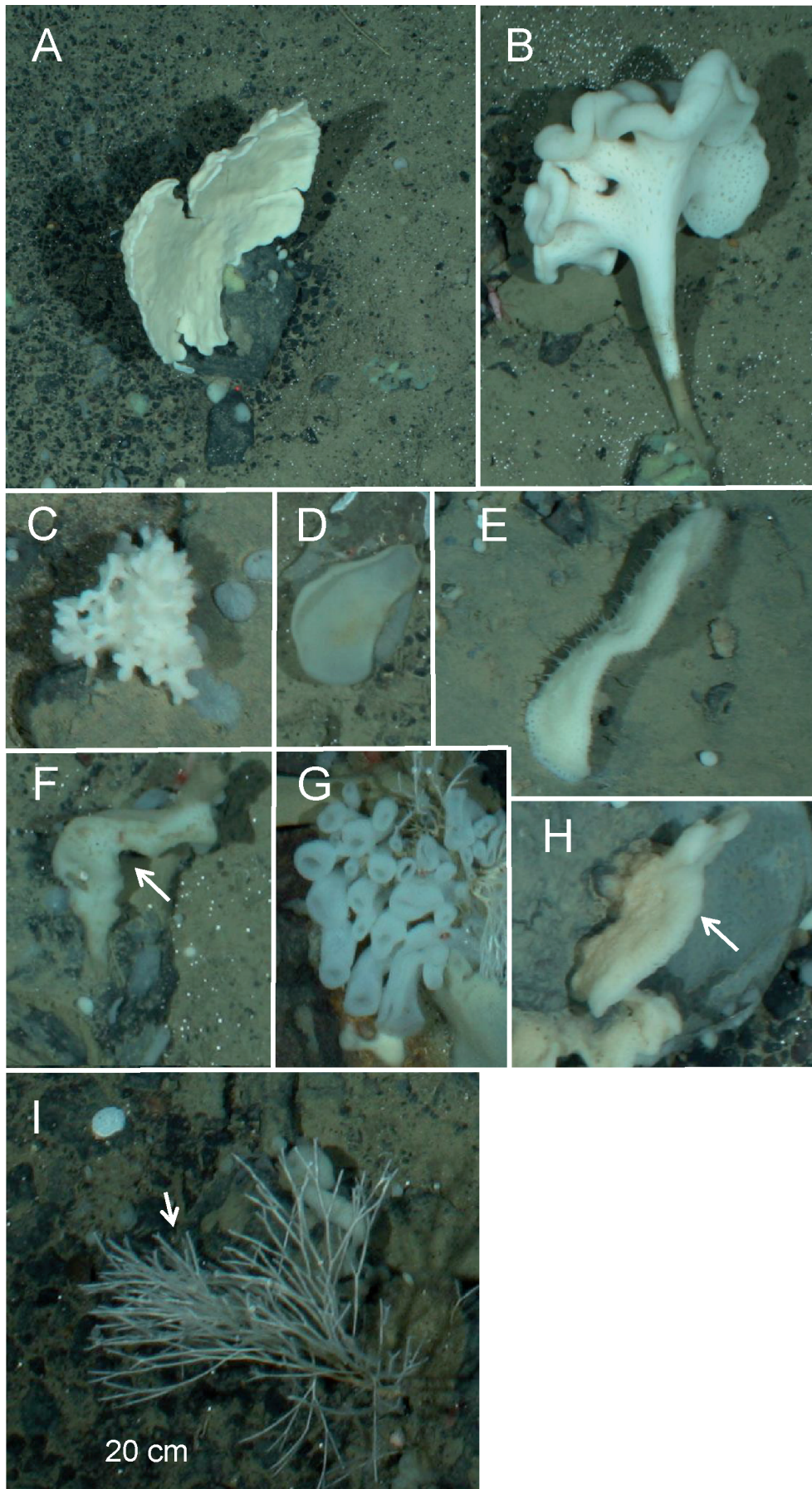
**Kirstin S. Meyer\***, Craig M. Young, Andrew K. Sweetman, James Taylor, Thomas Soltwedel, Melanie Bergmann

\*Corresponding author: kimeyer@alumni.nmu.edu

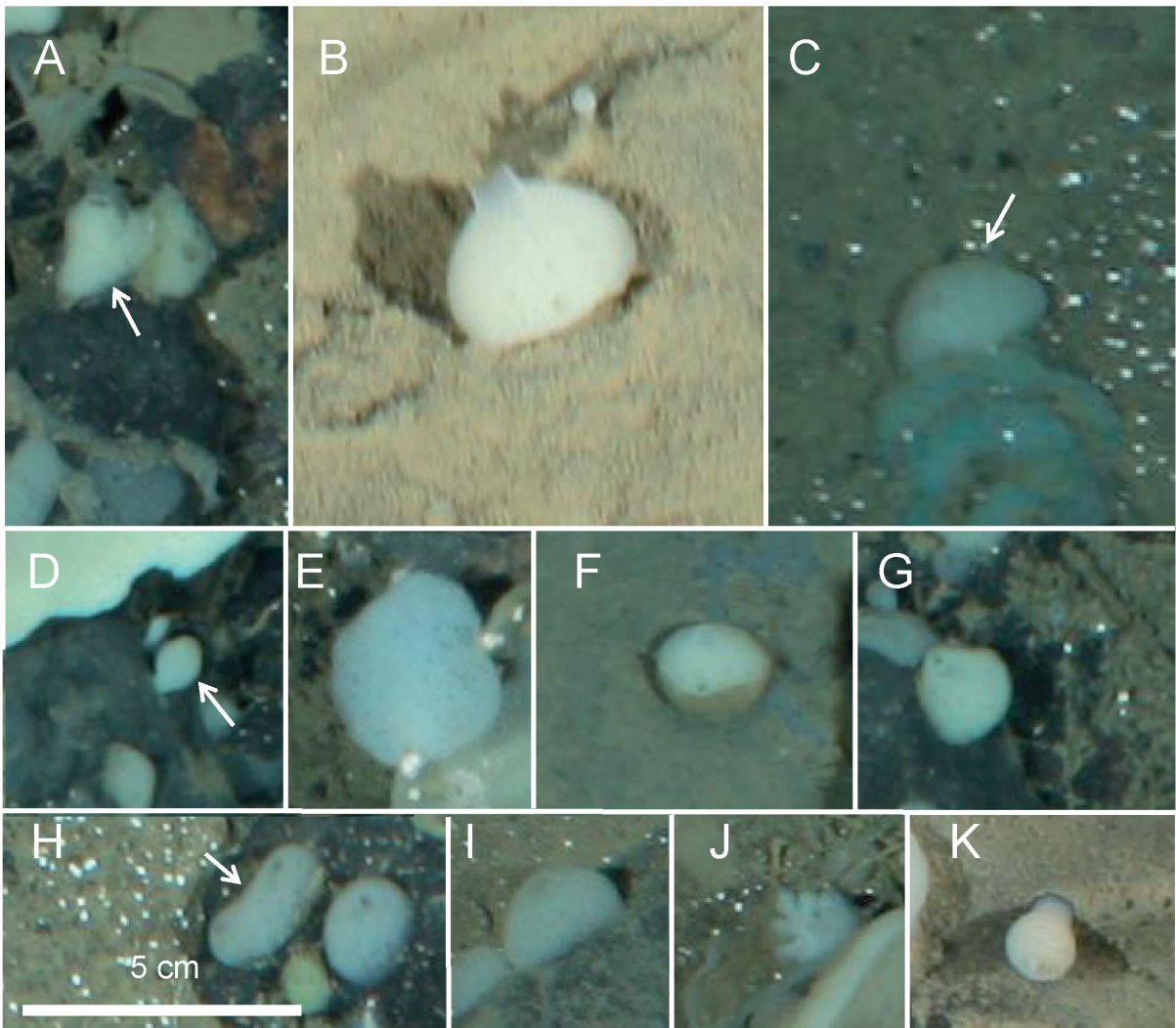
*Marine Ecology Progress Series 556: 45–57 (2016)*

**Table S1.** Number of morphotypes and proportion of individuals in each phylum and in each trophic group on dropstones in the Fram Strait.

<b>Phylum</b>	<b>No. morphotypes</b>	<b>% individuals</b>
Porifera	35	83.2
Cnidaria	7	11.9
Mollusca	1	0.1
Arthropoda	5	3.5
Annelida	2	0.1
Echinodermata	5	0.9
Unknown	1	0.3
<b>Trophic group</b>	<b>No. morphotypes</b>	<b>% individuals</b>
Suspension feeder	45	96.3
Predator/scavenger	9	3.4
Deposit feeder	1	0.0
Unknown	1	0.3

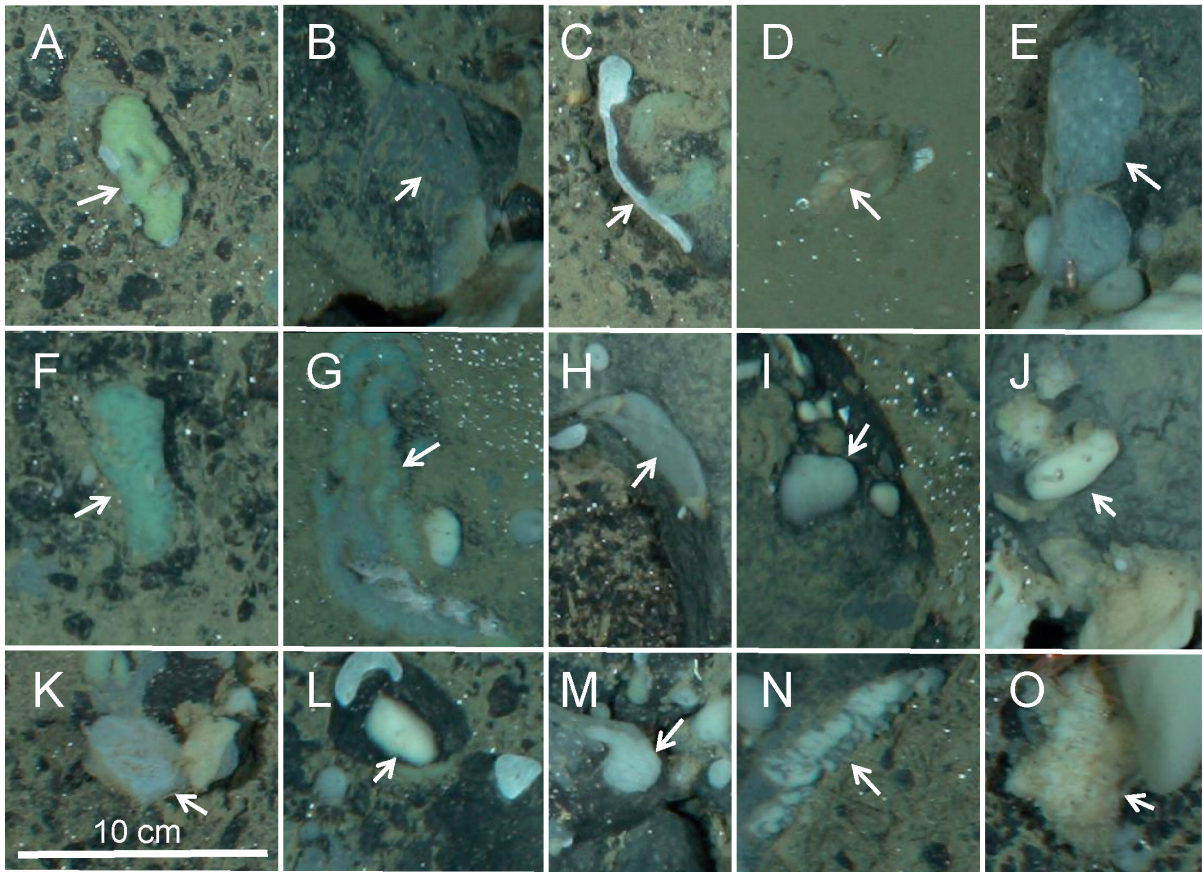


**Fig. S1.** Large sponges found on dropstones in the HAUSGARTEN observatory. A, *Phakellia* sp.; B, *Caulophacus arcticus*; C, *Lissendoryx complicata*; D, transparent gray sponge; E, hairy white sponge; F, asymmetrical white sponge; G, cup sponge; H, wall sponge; I, *Cladorhiza* cf. *gelida*.



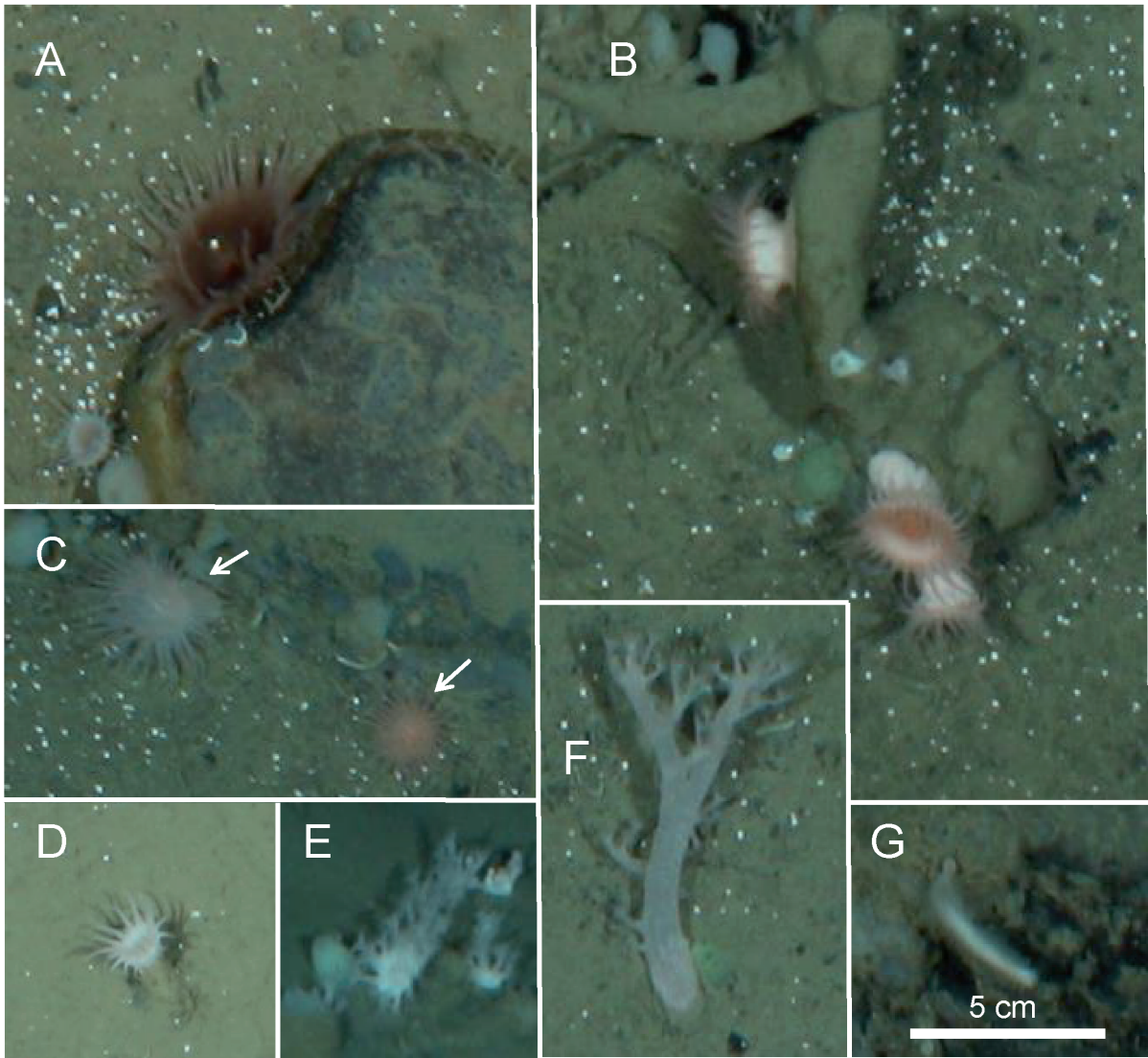
**Fig. S2.** Small sponges found on dropstones in the HAUSGARTEN observatory. A, vase sponge; B, *Polymastia* sp.; C, lollipop sponge; D, lobe-like sponge; E, bubble sponge; F, half-and-half sponge; G, cannonball sponge; H, gray dome sponge; I, white dome sponge; J, flame sponge; K, *Tentorium semisuberites*.



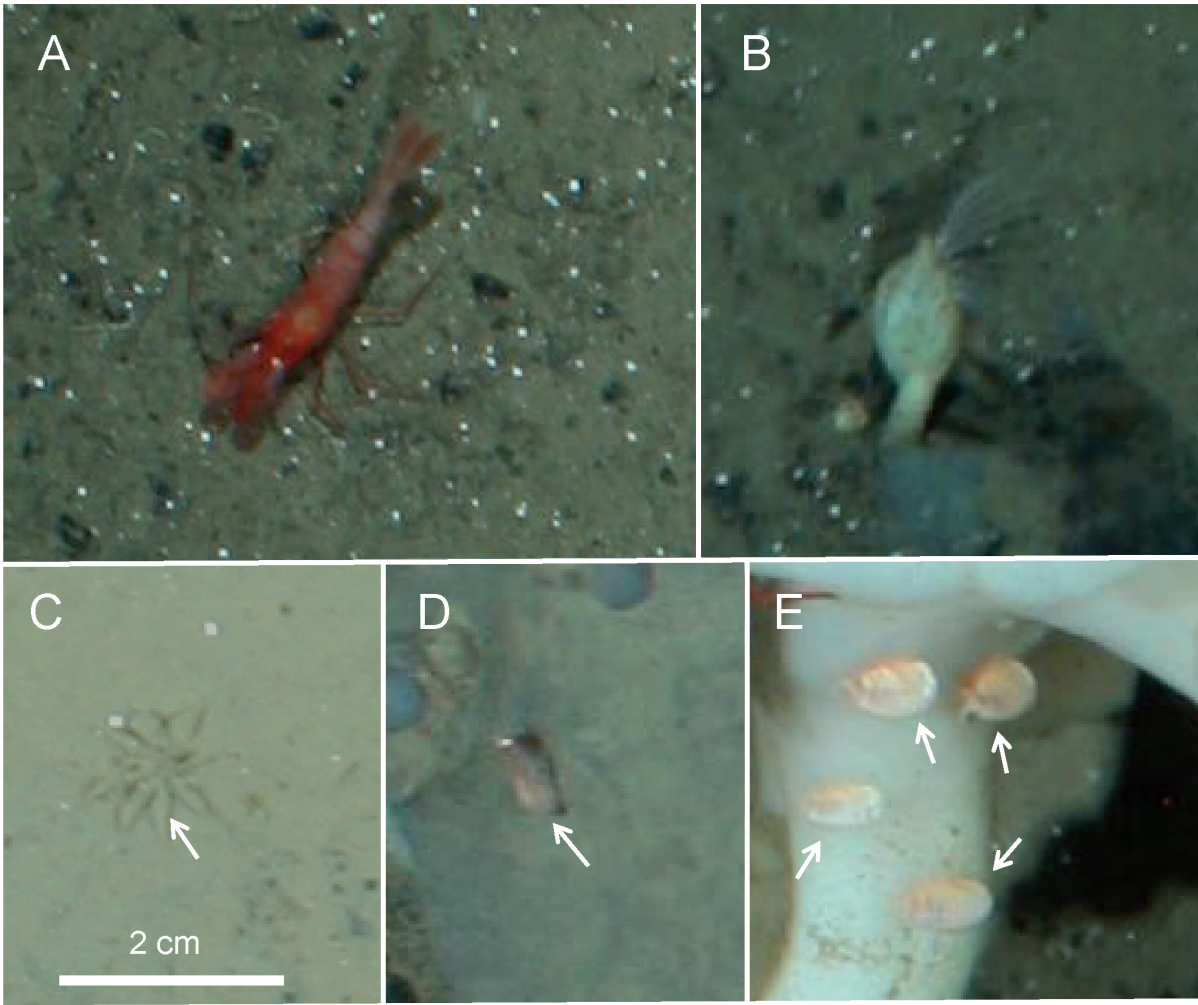


**Fig. S3.** Encrusting morphotypes found on dropstones in the HAUSGARTEN observatory. A, yellow encrusting sponge; B, gray encrusting sponge 1; C, thin white encrustment; D, orange-yellow encrustment; E, myxillinid sponge; F, laminar bryozoan; G, gray-yellow puffy encrustment; H, gray encrusting sponge 2; I, pancake sponge; J, puffy white encrustment; K, gray encrusting sponge 3; L, white pancake sponge; M, swirly white encrustment; N, white bulbous encrustment; O, sheet of papillae.

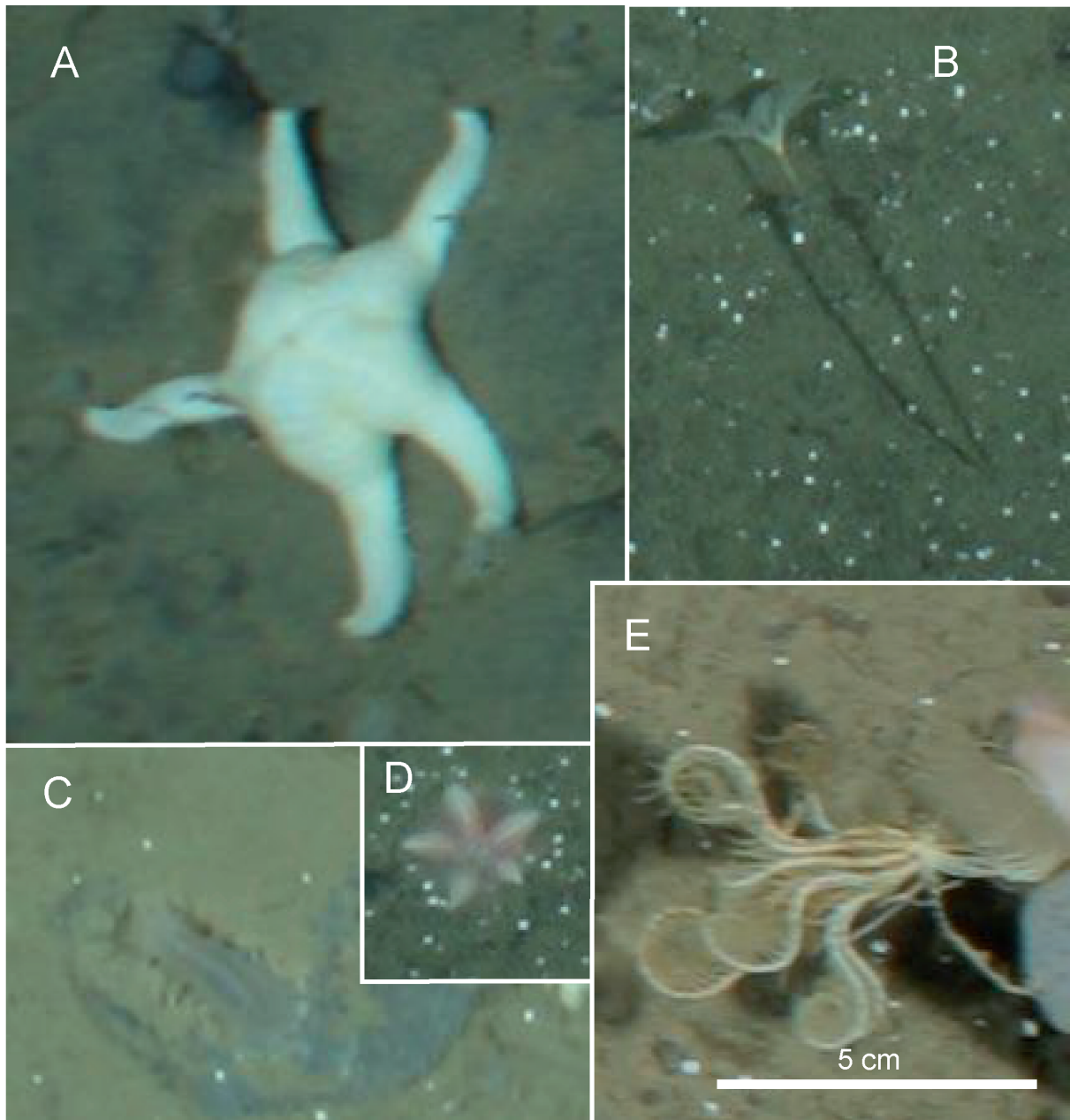




**Fig. S4.** Cnidarians found on dropstones in the HAUSGARTEN observatory. A, large red anemone; B, Hormathiidae; C, Pink/white anemone; D, *Bathypellia margaritacea*; E, fringe anemone; F, *Gersemia fruticosa*; G, sea pen.

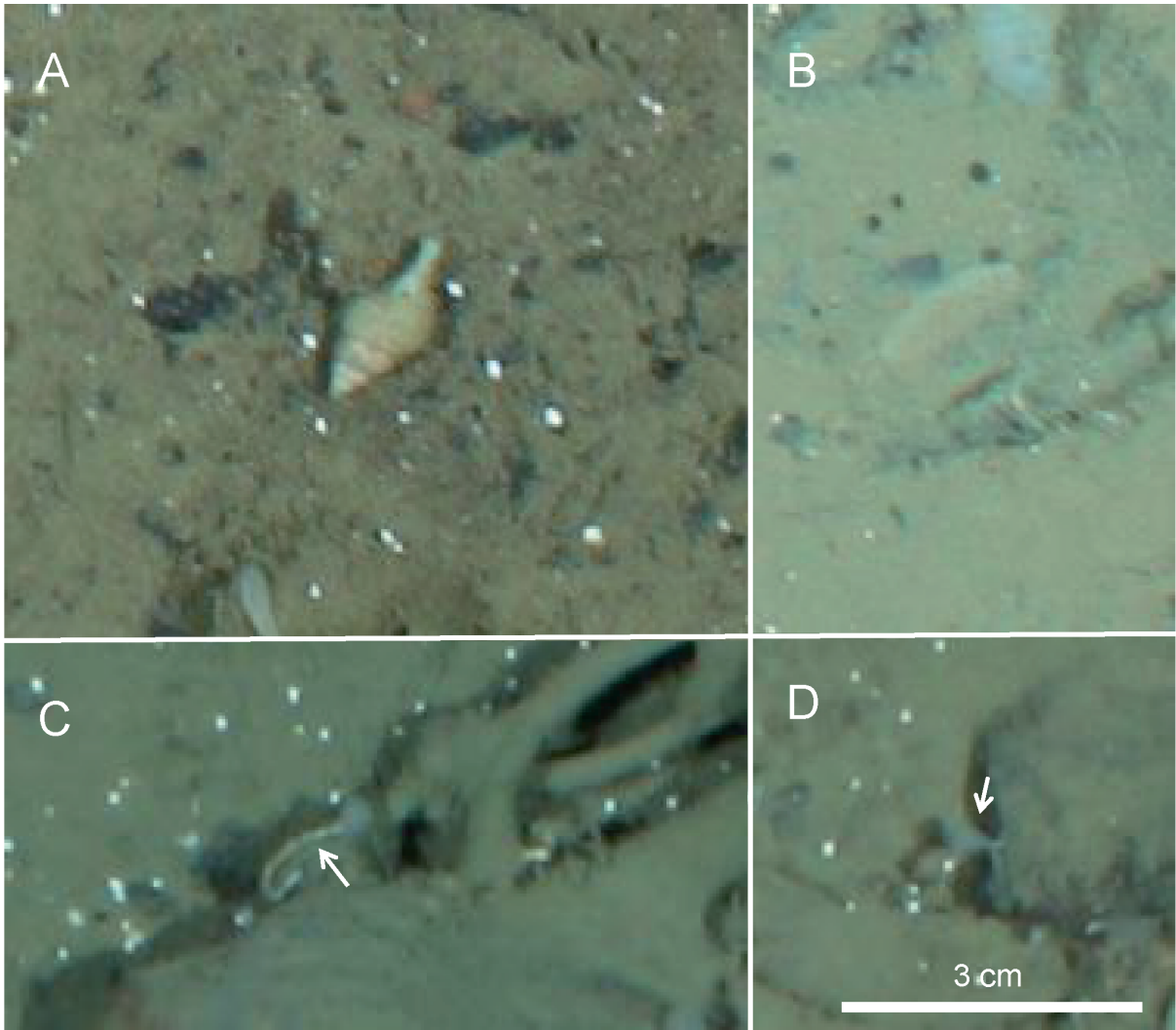


**Fig. S5.** Crustaceans found on dropstones in the HAUSGARTEN observatory. A, *Bythocaris* cf. *leucopis*; B, *Verum striolatum*; C, pycnogonid; D, *Lyssianasidae* sp. 1; E, amphipod.



**Fig. S6.** Echinoderms found on dropstones in the HAUSGARTEN observatory. A, *Poraniomorpha hispida*; B, *Bathycrinus carpenterii*; C, *Kolga hyalina*; D, *Hymenaster pellucidus*; E, *Poliometra proluxa*.





**Fig. S7.** Miscellaneous species found on dropstones in the HAUSGARTEN observatory. A, *Mohnia* cf. *mohnia*; B, *Byglides groenlandia*; C, serpulid polychaete; D, unknown morphotype.