



# 2015 MBARI Gulf of California Expedition Fish Species Master Guide

- Supplement 1 to Gallo et al. (2020) Dissolved oxygen and temperature best predict deep-sea fish community structure in the Gulf of California with climate change implications. *Marine Ecology Progress Series* 637:159–180 <https://doi.org/10.3354/meps13240>

# *Bathycongrus macrurus*





# *Bathypterois* sp.



Likely *Bathypterois pectinatus*

# *Cataetyx rubrirostris*





# *Cephalurus cephalus*



Dive 732, 734, 736, 737 and 738

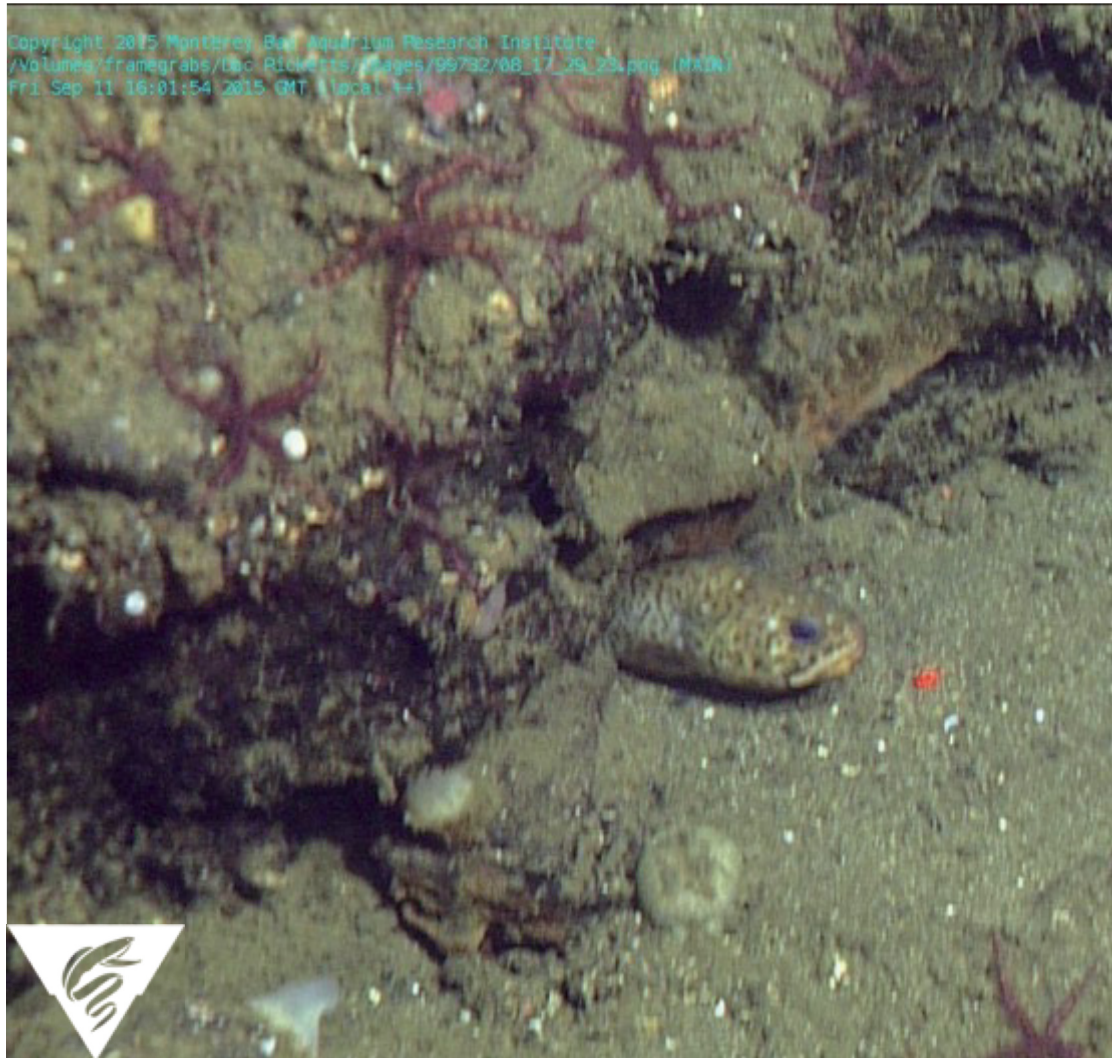
# *Cherublemma emmelas*



Dive 732, 734, 736, 737, and 738



# *Chilara taylori*



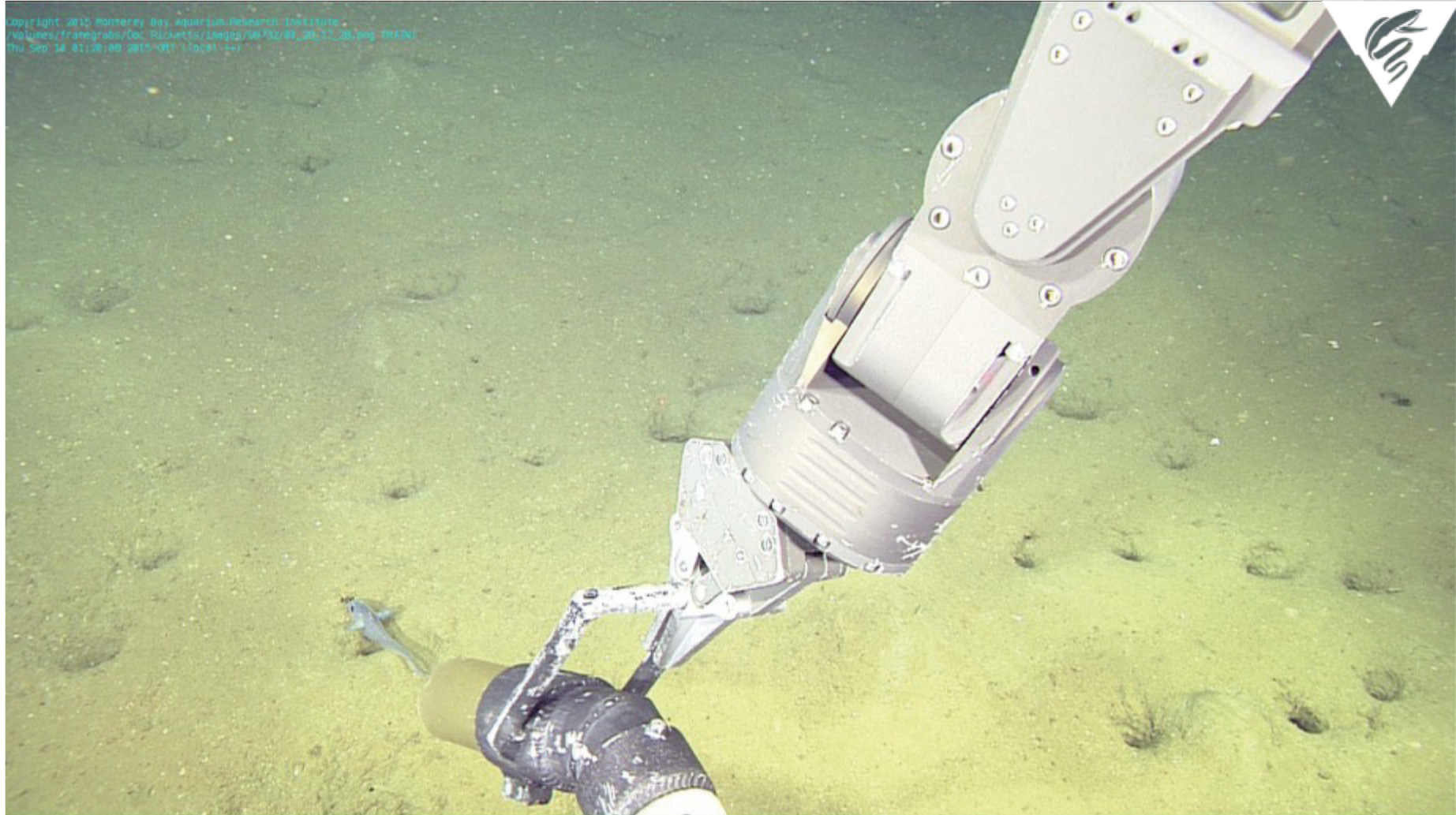


# *Coelorinchus scaphopsis*





# *Coryphaenoides capito*





*Cottoidea sp.*

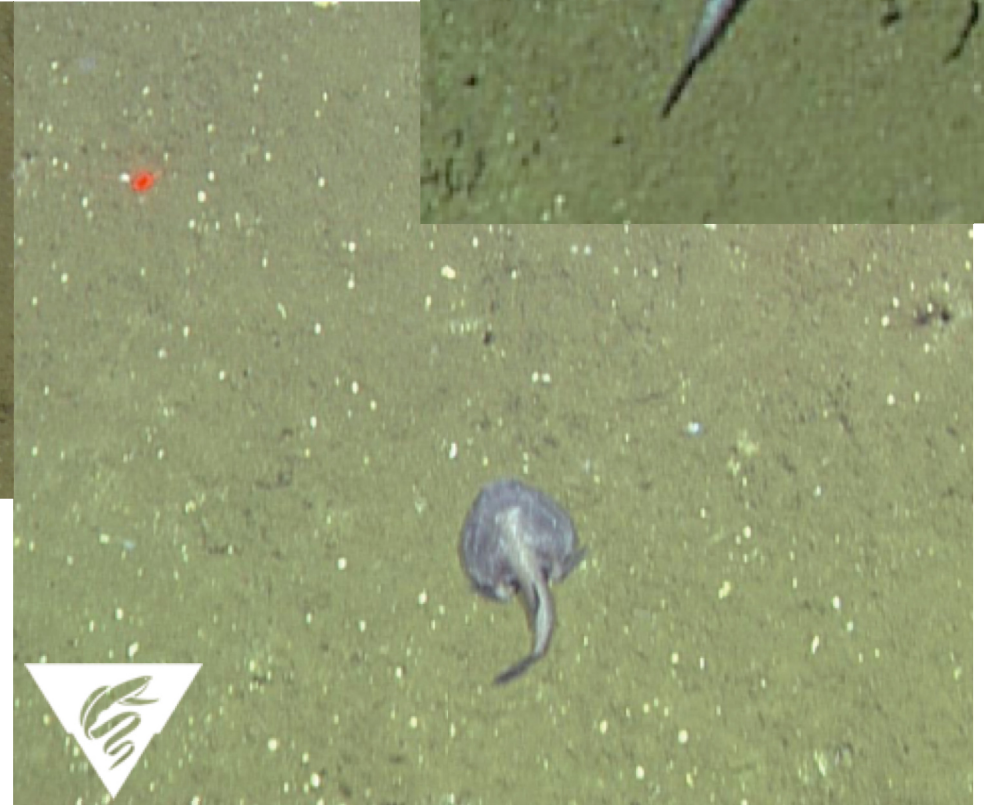




# *Derepodichthys alepidotus*



# *Dibranchus spp.*



Several species likely present, including:  
*Dibranchus sp. A*, *Dibranchus hystrix*, and *D. nudivomer*. All captured specimens were *D. hystrix*.

Dive 731, 732, 737, and 738



# *Dibranchus spinosus*



Dive 732, 737, and 738

# *Eknomoliparis chirichignoae*





# *Eptatretus sinus*



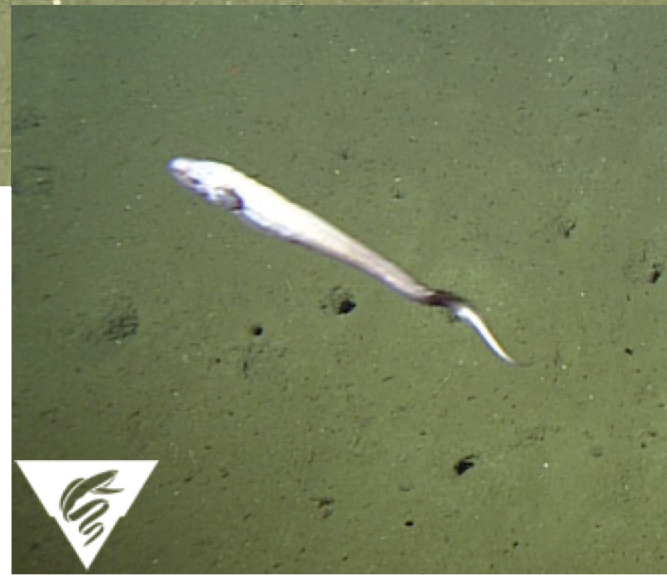
Likely *E. sinus*, but *E. mcconnaugheyi* also occurs in the Gulf of California



Dive 732, 733, 734, 735, 736, and 737



# *Eretmichthys pinnatus*



Dive 731, 737, and 738



# *Gnathophis cinctus*





# *Hydrolagus colliei*



Dive 733, 735 and 736



# *Lestidiops* sp.





# *Liopropoma longilepis*





# *Lophiodes caulinaris*



Likely *L. caulinaris*, but *L. spiluris* also occurs in  
the Gulf of California

Dive 732, 734, 735, and 738



# *Lycenchelys* sp.



Dive 731, 732, 737, and 738



*Lycenchelys sp.*



Dive 731, 732, 737, and 738

# *Macrouridae* spp.



Likely several cryptic species present. Captured representatives included *Nezumia liolepis* and *Coryphaenoides capito*.

Dive 731, 732, 734, 735, 736, 737, and 738



# *Merluccius sp.*



Likely *Merluccius angustimanus*, but *M. hernandezi* also occurs in the Gulf of California

Dive 732 and 736

# *Nemichthys sp.*



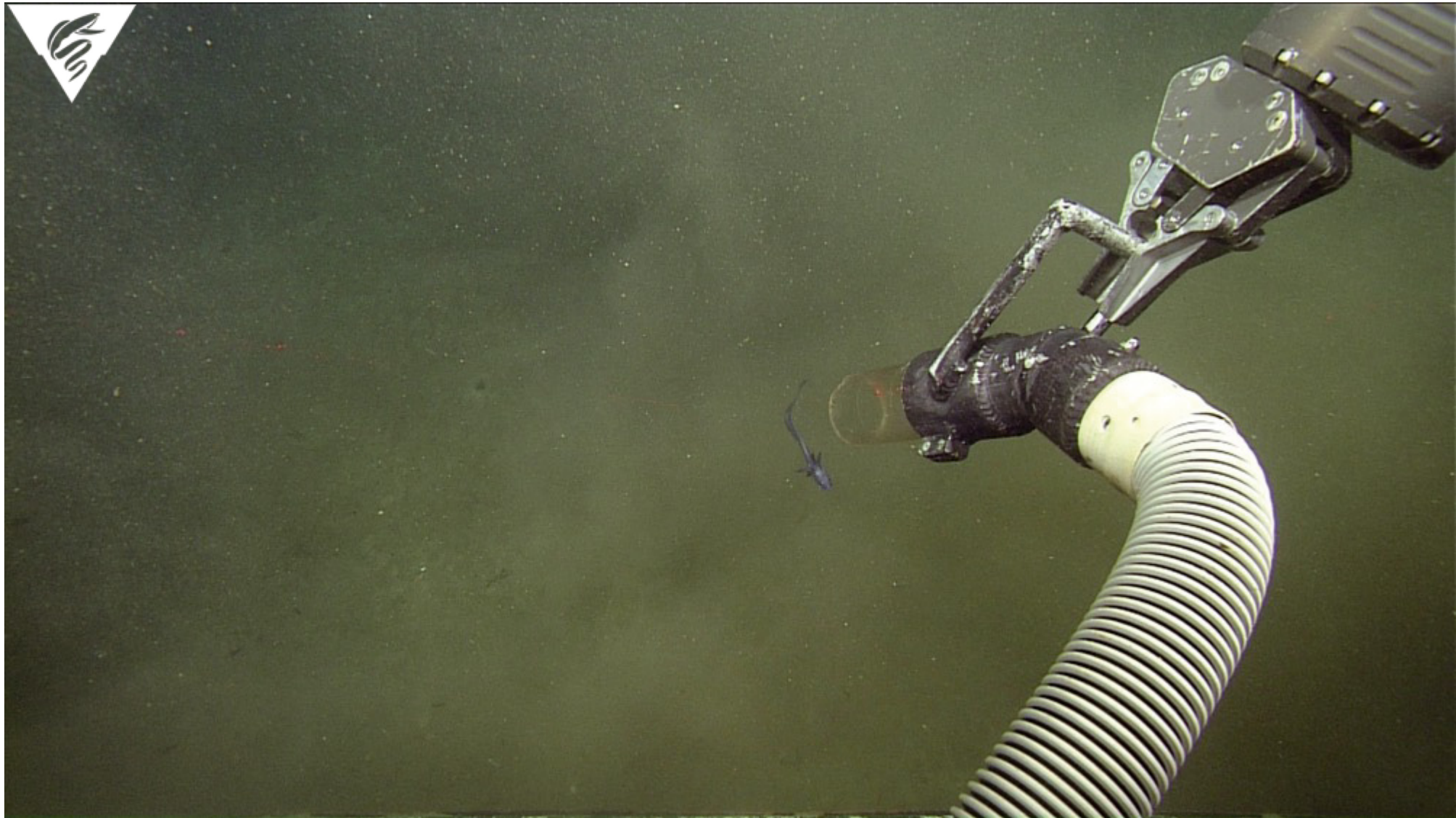
*Nemichthys larseni* and *Nemichthys scolopaceus*  
both occur in the Gulf of California



*Nettastomatidae sp.*

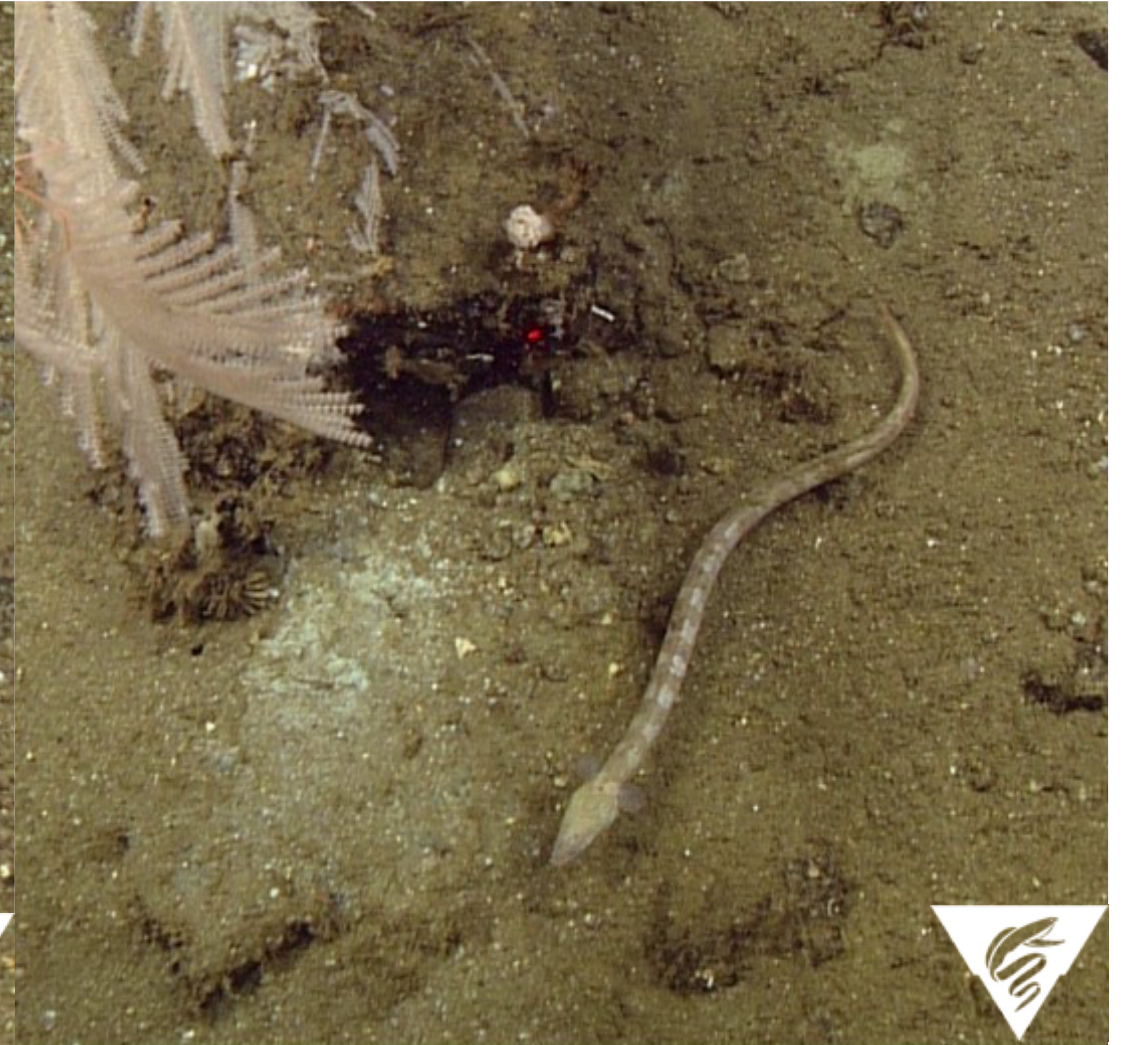


# *Nezumia liolepis*





# *Opichthus frontalis*



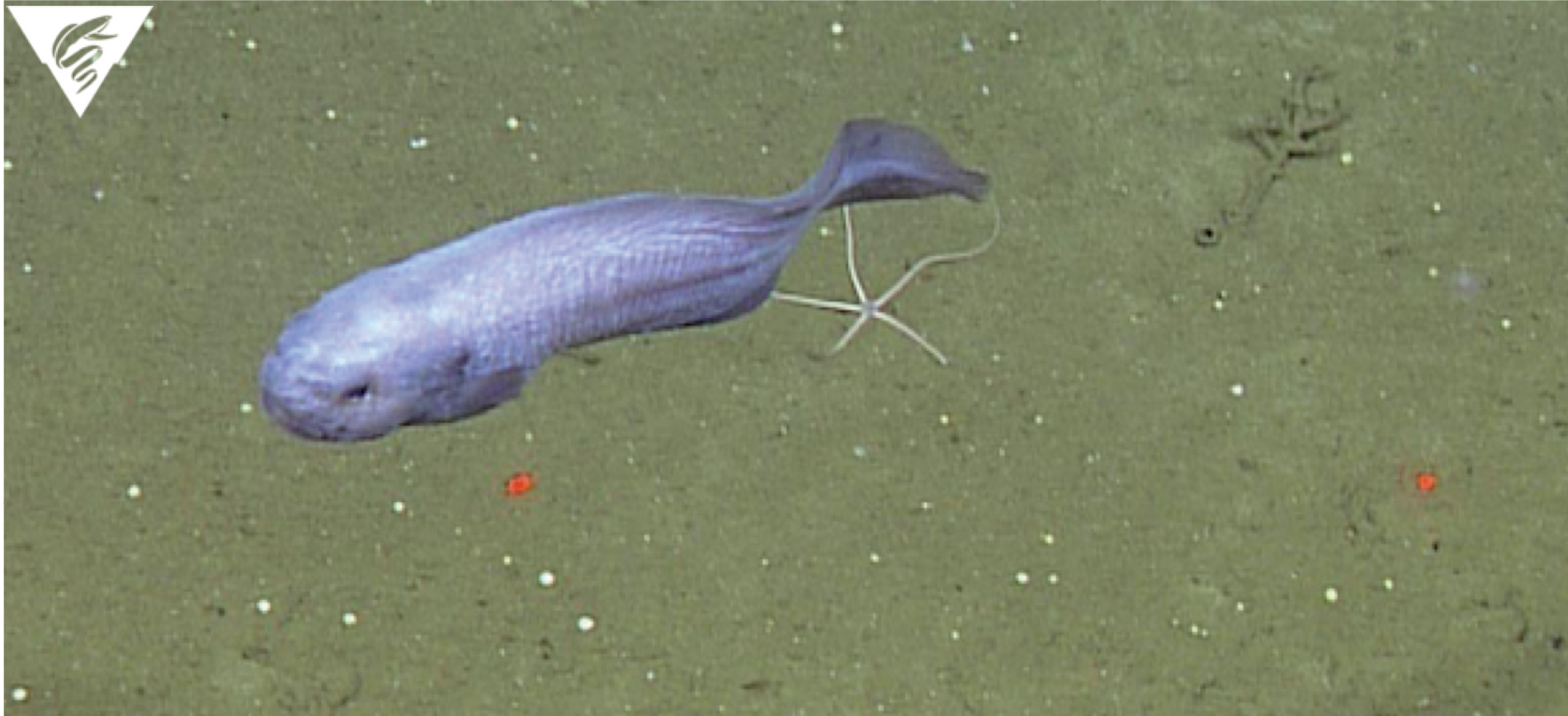


# *Paralabrax auroguttatus*





# *Paraliparis rosaceus*



# *Parmaturus xaniurus*



Other cryptic scyliorhinids  
may also be included

Dive 733, 734, 735, 736, and 738



# *Physiculus rastrelliger*



*Physiculus nematopus* also known to occur in the Gulf of California. All captured specimens were *P. rastrelliger*.

Dive 732, 734, 735, 736, and 738



# *Pontinus furcirhinus*



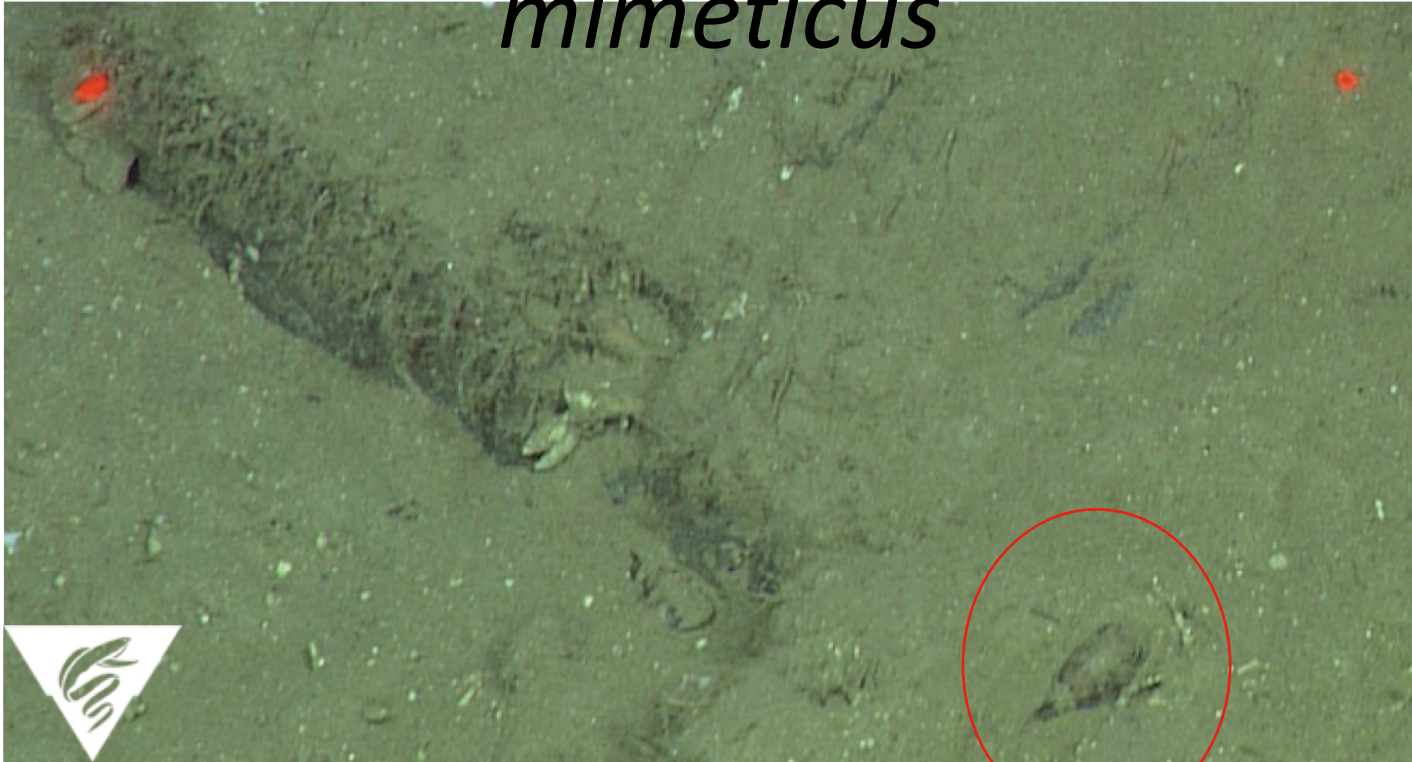
Dive 732, 734, and 735



# *Pontinus sierra*



# *Porichthys mimeticus*



Likely *Porichthys mimeticus* based on captured individual, but several other *Porichthys spp.* also occur in the Gulf of California



Dive 737 and 738



# *Pronotogrammus eos*





*Raja sp. 1*





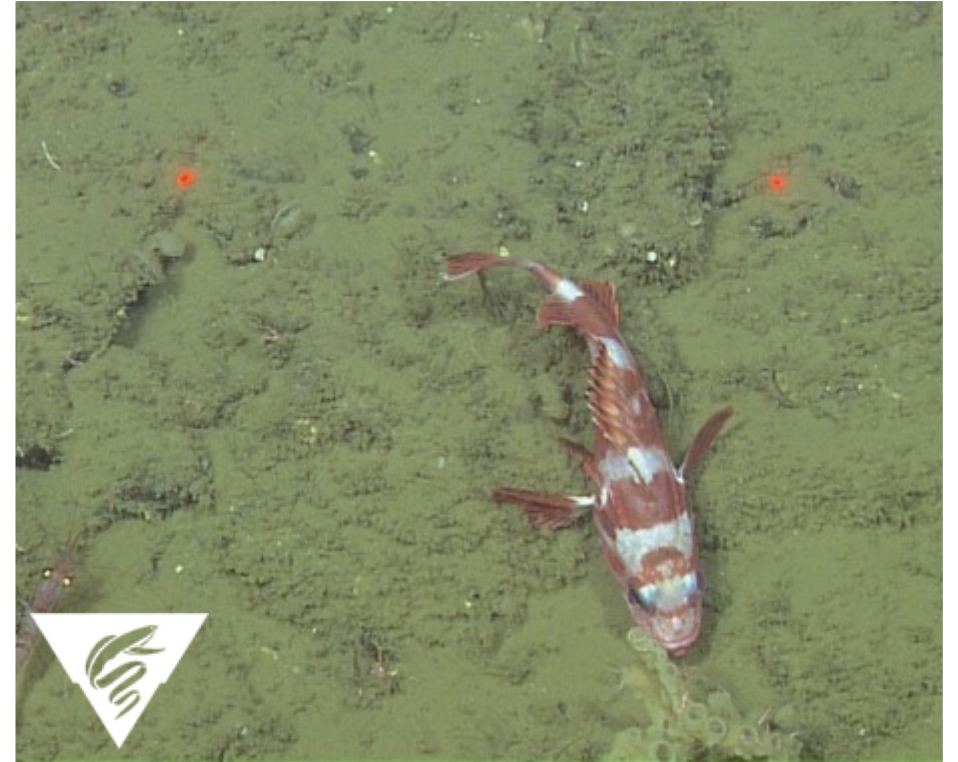
*Raja sp. 2*



# *Sebastes cortezi*



Other cryptic *Sebastes* species may also be included



Dive 733, 734, 735, and 736



# *Sebastes exsul*



Other cryptic *Sebastes* species may also be included

Dive 735



*Sebastes  
macdonaldi*





*Serranidae sp.*



# *Squatina* sp.





# *Symphurus* spp.



Several cryptic species likely present. Captured individual was *Symphurus oligomerus*.

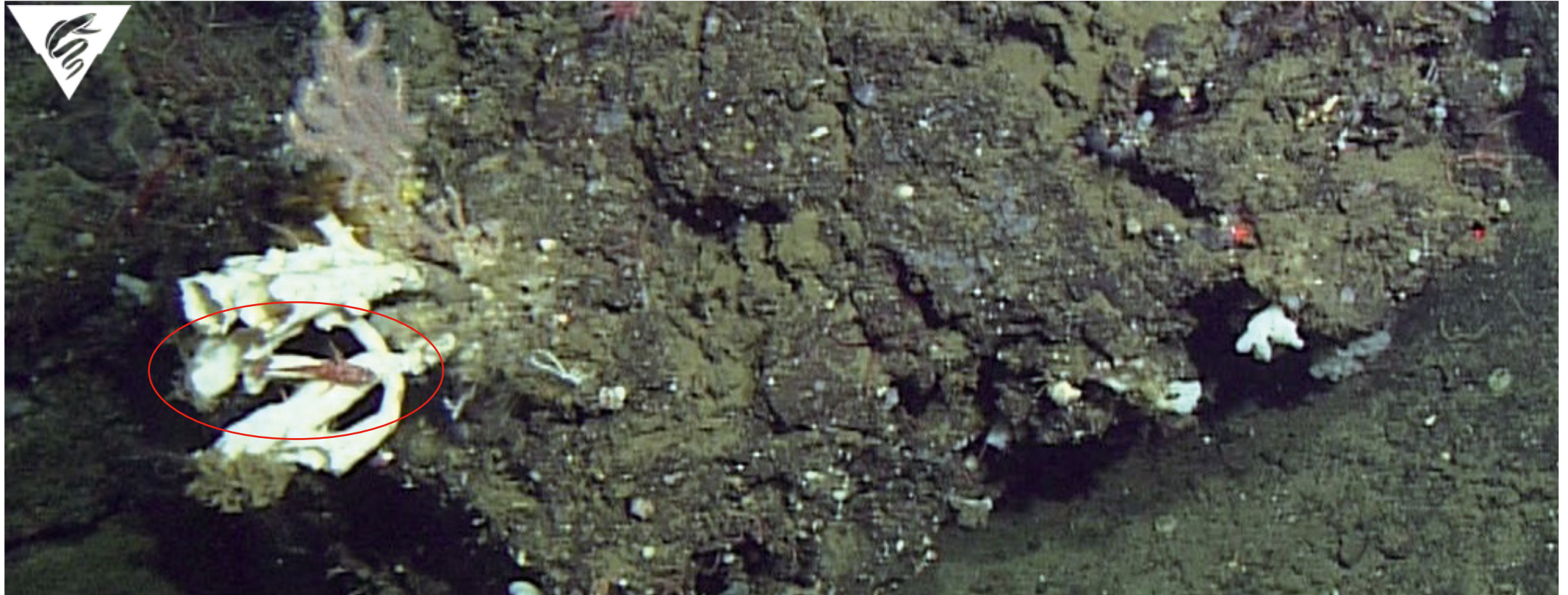
Dive 732, 734, 735, and 736

# *Synodus sp.*





*Triglidae sp.*





# *Xeneretmus ritteri*





*Zoarcidae sp.*

