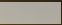




 **DATALOGIC™**

 **DATALOGIC MOBILE**



**Extra Rugged  
Partner!**

Tailored for warehouse management, the Rhino™ increases productivity through its **automated data capture** capabilities during receiving, put-away, picking and shipping activities. In harsh environments as well, including cold storage and outdoor. Addition of a Datalogic hand held bar code scanner allows for quick data entry and location confirmations.

## WAREHOUSING

Warehousing today means optimization to the maximum extent. Technology needs to support increased sales without increasing the costs associated with staffing or facility space.

The focus is on improving operations and managing exceptions, and not on documentation paper trails.

It becomes fundamental to enable key performance measurements to ensure that the flow of product in and out of the warehouse meets customer service level expectations while driving down operation costs.

For all of the above the Rhino™ Vehicle Mount Computer represents the best partner in assisting the forklift operators during their everyday stocking, picking, shipping and receiving activities.

Rhino™ is made to deliver the maximum durability and it is tailored to resist the harshest environments. It is equipped to provide best performance in increasing productivity and reducing errors in all kind of modern industrial and logistics applications. Customers can leverage their existing investment in mobile applications and IT infrastructures, through a seamless integration of the Rhino™ Vehicle Mount Computer, and being guaranteed of a fast ROI and a decreased TCO.



## MANUFACTURING

Macro-economic trends are constantly putting pressure on manufacturing operations to become more efficient. Globalization and the availability of low-cost producers are amplifying this pressure and experts in this industry are constantly developing strategies that reduce the number of tools, people, space and engineering time required to produce a product.

Applications in the manufacturing sector are rooted in the ability to enable real-time decision making and transaction processing at the point of activity. From workforce management to materials management the application opportunities are broad.

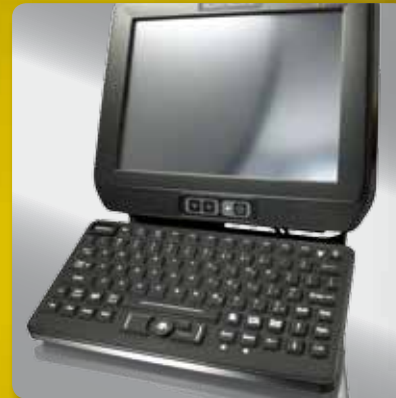
Key operational drivers impacting adoption of wireless data collection and communication solutions on the shop floor include on-time delivery, overall equipment effectiveness, direct material usage and average stock outs.

With the Rhino™ customers can count on reliable performance, resistance to the toughest environments and a huge variety of connectivity and communication capabilities, both wireless and wired, including also Ethernet 10/100Mb.



### EXTRA RUGGED

The Rhino™ vehicle mount computer set the industry rugged standard. Cast aluminum IP65 sealed case provides for the driest to the wettest environments. Easy to install because no covers, gaskets, or special cables are required for installation. An extended temp model is available to allow operations in freezing temperatures.



### VERSATILE

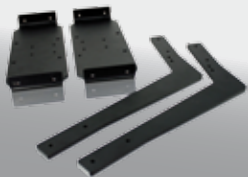
Rhino™ fits different mounting and space constraints. Mounting options include support for the vehicle mounted computer and ABCD or QWERTY external keyboards. A dedicated software keyboard, available in a multitude of layouts and languages, adapts the Rhino to a minimum footprint and global enterprises. Included in the Datalogic Utilities and Wavelink Powered program, the Rhino™ maximizes the return on investment through easy deployment, device management and maintenance customized.



### SEAMLESS CONNECTIVITY

Connectivity is particularly central to the Rhino™, gathering wireless capability through the adoption of Summit IEEE 802.11 b/g CCX v4 certified radio. Furthermore a Bluetooth option is available to connect with peripheral devices and is certified for the use of Datalogic Scanning Powerscan™ handheld readers. But also on the wired connectivity side Rhino™ provides a wide set of possibilities, with two serial and two USB ports, thus allowing for instance the addition of a hand held bar code scanner for quick data entry and location confirmations, and featuring additional Ethernet capability on dedicated models.

## Accessories



Mounting accessories



Powerscan 8000 tethered and cordless (via cradle and Bluetooth)



External keyboard (both ABCD and QWERTY layout)



# Specifications

## > PHYSICAL CHARACTERISTICS

DIMENSIONS	10.7" x 9.2" x 2.0" (2.6" at connectors) 27.3 cm x 23.4 cm x 5.2 cm (6.6 cm at connectors)
WEIGHT	2.5 Kg (5.5 lbs) not including mount
DISPLAY	Active Matrix Color TFT 10.4" LCD with 640 x 480 pixel resolution, 400/430 cd/m2, 300:1 contrast ratio, with backlight and resistive touch panel with anti glare coating
KEYBOARD	Power On/Off key with Power LED Up and Down keys allow control of backlight brightness and speaker volume
OPERATING TEMPERATURE	-10° to +50°C (14° to 122°F), start up as low as 0°C (32°F) -30° to +60°C (-22° to 140°F) extended temperature model, start up as low as -20°C (-4°F)
STORAGE TEMPERATURE	-30° to +70°C (-22° to 158°F)
SHOCK/VIBRATION	MIL-STD 810F
ENVIRONMENTAL SEALING	IP65 for water and dust resistance

## > SYSTEM

OPERATING SYSTEM	Microsoft Windows Embedded CE 6.0 R3
MICROPROCESSOR	Marvell® XScale PXA270 @ 520 MHz
SYSTEM RAM MEMORY	128 MB
SYSTEM FLASH MEMORY	128 MB
EXPANSION SLOTS	1 x Compact Flash Type I/II (not available if 802.11 radio installed) 1 x SD HD Memory / IO
AUDIO INTERFACE	2 x internal speakers capable of over 90 db, volume front panel adjustable
POWER SUPPLY	10V-60VDC internal fully isolated power supply Internal backup battery for power loss prevention with data and real time clock backup

## > COMMUNICATIONS

INTERFACES	2 x RS232 serial port (DB9), with selectable power (5V or 12V up to 1 amp maximum) to supply an external hand held reader 2 x USB HOST ports External keyboard/mouse via USB port Optional Ethernet Port 10/100 Mb
PERSONAL AREA NETWORK (WPAN)	Bluetooth v.2.0 dongle certified with Datalogic PowerScan
LOCAL AREA NETWORK (WLAN)	IEEE 802.11b/g CF Card WiFi and Cisco CCXv4 certified

# EASEOFCARE

Our EASEOFCARE Service Program ensures the most cost effective way to protect your investment in your chosen Datalogic Mobile device. Each of our EASEOFCARE Service Level options will lower the Total Cost of Ownership (TCO) inherent in all mobile devices by minimizing downtime and service costs, plus maximizing operator productivity. One can also choose from 1, 3 or 5 year coverage.



# Software

The Rhino™ Windows CE 6.0 R3 operating system and X Scale processor leverage the existing investment in mobile computing applications. Included in the Datalogic Utilities and Wavelink Powered program, the Rhino™ maximizes the return on investment through easy deployment, device management and maintenance customized.

### DEVELOPMENT

Windows CE SDK™

### TERMINAL EMULATION

Wavelink Terminal Emulation™  
Wavelink® TermProxy  
Wavelink® Industrial Browser

### CONFIGURATION & MAINTENANCE

Wavelink Avalanche®  
Datalogic Desktop Utility  
Datalogic Configuration Utility

### UTILITIES

Wavelink® Remote Control



DATALOGIC MOBILE

© 2011 Datalogic Mobile Srl. - 2011 October • All rights reserved. • Protected to the fullest extent under U.S. and international laws. • Copying, or altering of this document is prohibited without express written consent from Datalogic Mobile Srl. Datalogic and the Datalogic logo are registered trademarks of Datalogic S.p.A. in many countries, including the U.S.A. and the E.U. Rhino is a registered trademark of Datalogic Mobile Inc. in the U.S.A., Canada and the E.U. The Rhino logo is a trademark of Datalogic Mobile Inc. All other brand and product names mentioned herein are for identification purposes only and may be trademarks or registered trademarks of their respective owners.