

Interface*Hospitality*

**Welcome to beautiful,
modular flooring design.**

Welcome to Interface Hospitality

You welcome people every day, from all over the world. People who want the perfect experience. It's what makes hospitality both demanding and rewarding.

At Interface Hospitality we understand how a great product can make an experience more enjoyable. We also know a great product can make all the difference in running a successful business.

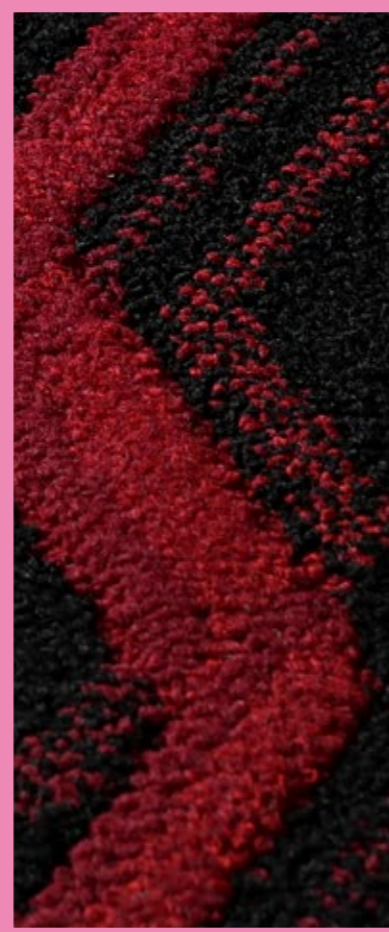
Using our extensive collection of modular flooring, you can create your unique environments, mixing texture, colour and pattern to create spaces your guests will love to be in.

Whatever your requirements, from first ideas to installation, Interface Hospitality is dedicated to realising your vision. Making it easier for you to provide your guests with an amazing experience.



Interface Hospitality

Welcome to beautiful, modular flooring design.



Carpet Tiles

Portmanteau	4
Luxury Collection	10
Mod Café	14
Sampa	16
City of Angels	18
A Cut Above	20
Head Over Heels	22
Hip Over History	30
RMS 607	32
Collins Cottage	34
Overedge	36
Haptic	38
Decibel	40
Darning	42
Hydropolis	44

Luxury Vinyl Tile

Iridescence	48
Level Set® Collection	50
Look Both Ways™ Collection	56

nora® Rubber

noraplan® 926 castello	64
norament® 926 kivo	66
norament® 926 pado	68
norament® stairtreads	70
noraplan® unita	72

Technical Specifications	80
--------------------------	----



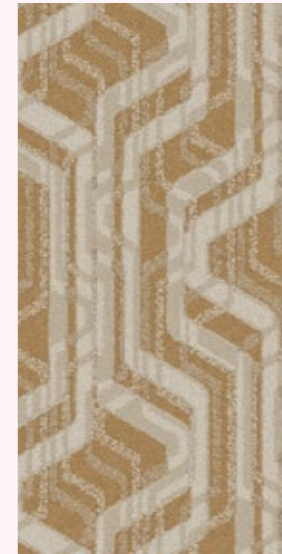
PORTMATEAU PM19 EBONY & IVORY



PM19
7968005 EBONY & IVORY
50cm x 100cm



PM19
7968002 COBALT
50cm x 100cm



PM19
7968004 HONEY
50cm x 100cm



PM19
7968003 BERRY
50cm x 100cm



PM19
7968001 ROSEWOOD
50cm x 100cm

Portmanteau

Portmanteau

Incrementally diffusing the texture, so transitions can move slowly across the floor or abruptly for dramatic effect. There is a shared texture like a loosely woven textile that beautifully offsets the graphic quality of the other patterns.



PORTMATEAU PM39 DENIM



PM39
8063001 EBONY & IVORY
50cm x 100cm



PM39
8063005 DENIM
50cm x 100cm



PM39
8063003 PISTACHIO
50cm x 100cm



PM39
8063002 BUTTERSCOTCH
50cm x 100cm



PM39
8063004 SAGE
50cm x 100cm

Portmanteau



PM49
8064001 ECRU
50cm x 100cm



PM49
8064002 GARDEN STONE
50cm x 100cm

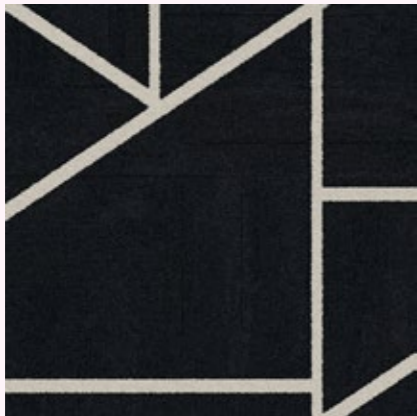




LC02
2369003 FAWN
100cm x 100cm



LC02
2369002 WALNUT
100cm x 100cm



LC02
2369001 INK
100cm x 100cm



LC02
2369004 CLOUD
100cm x 100cm

Luxury Collection

Luxury Collection

Two patterns with a lot of texture. Creating patterns that are luxurious.

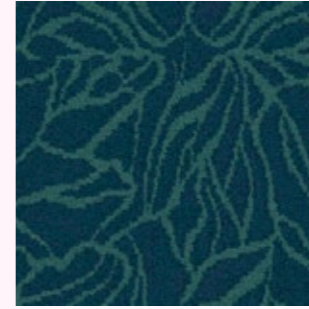




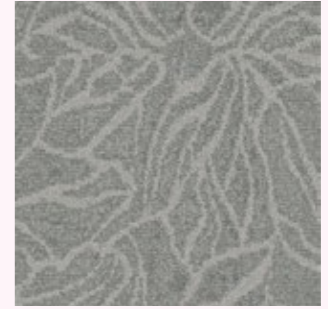
LUXURY COLLECTION LC05 PEACOCK



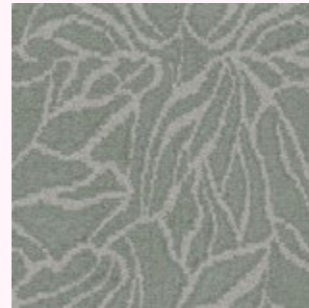
LC05
2377003 HAZEL
50cm x 50cm



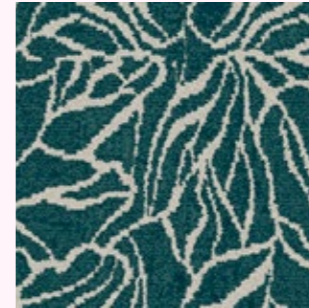
LC05
2377005 AQUA
50cm x 50cm



LC05
2377001 SILVER
50cm x 50cm



LC05
2377002 MINT
50cm x 50cm



LC05
2377004 PEACOCK
50cm x 50cm

Luxury Collection

Mod Café



MOD CAFÉ STAR BLACK

Mod Café

The starburst pattern of this rug evokes dreamy images of outer space and shining stars. This mid-century style looks right at home in any space.



8150004 STAR BLACK
50cm x 50cm



8150003 STAR CHARCOAL
50cm x 50cm



8150002 STAR FLANNEL
50cm x 50cm

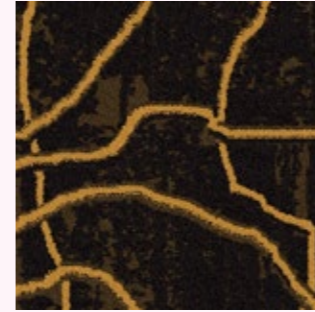


8150001 STAR LINEN
50cm x 50cm

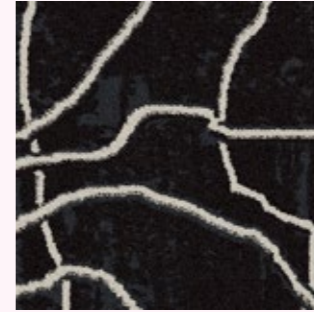


Sampa

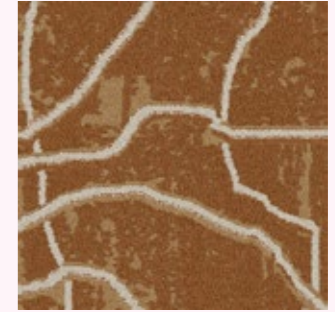
SAMPA ANZAC



8192001 ANZAC
50cm x 50cm



8192005 COAL
50cm x 50cm



8192004 UMBER
50cm x 50cm



8192003 BRICK
50cm x 50cm



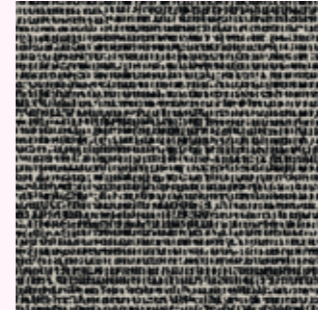
8192002 TROPIC
50cm x 50cm

Sampa

A park is truly the most explicit example of our desire to engage with nature, designing natural settings out of natural elements to recreate the perspective and experience of native landscapes. Sampa brings the park inside with elegant, organic lines, referencing branches, fissures in stone and the veins in a leaf.



8130002 DUSK
50cm x 50cm



8130003 MIDNIGHT
50cm x 50cm



8130001 DAWN
50cm x 50cm



CITY OF ANGELS MIDNIGHT

City of Angels

City of Angels

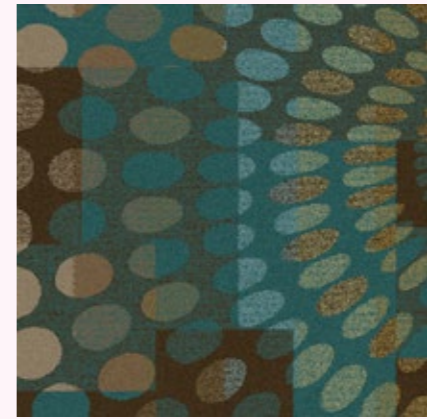
Inspired by the artwork from Agnes Martin, City of Angels is a repetition of short lines loosely formed into a pattern – sometimes stippled, sometimes shifting – to create an abstraction of the grid and a hand-drawn effect.



A CUT ABOVE M0833 PACIFIC



A Cut Above



7274014 PACIFIC
100cm x 100cm



7274012 LEATHER
100cm x 100cm



7274010 AMBER
100cm x 100cm



7274011 CARNATION
100cm x 100cm



7274013 SIENNA
100cm x 100cm

A Cut Above M0833

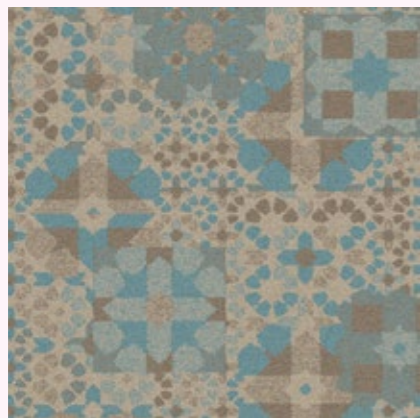
A rich bold patterned surface and lots of colour. The tip sheared face provides luxurious texture.



M0684
6640030 ANTIQUE
100cm x 100cm



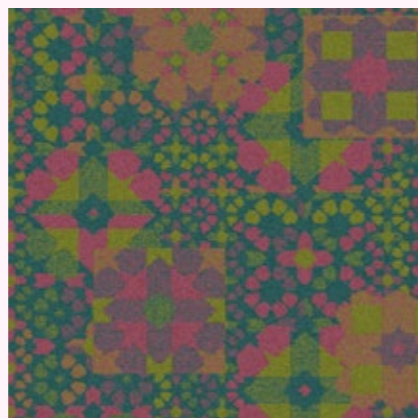
M0684
6640027 SEPIA
100cm x 100cm



M0684
6640026 BEACH
100cm x 100cm



M0684
6640028 TERRACOTTA
100cm x 100cm



M0684
6640029 CARNIVAL
100cm x 100cm

Head Over Heels

Head Over Heels, a stunningly beautiful collection of bold textured patterns made to inspire.

Head Over Heels

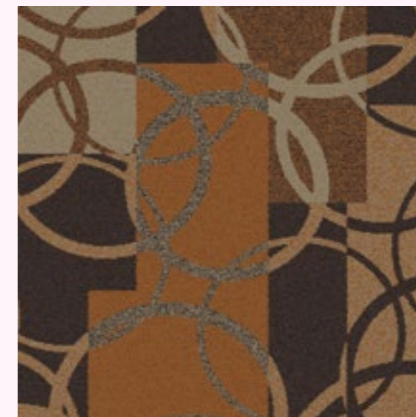




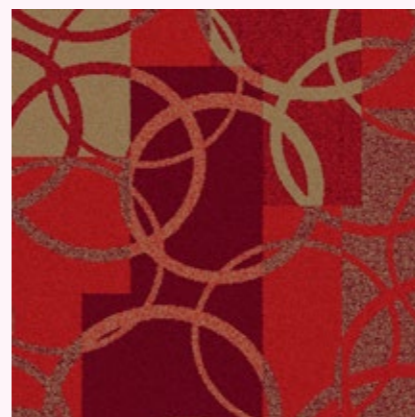
HEAD OVER HEELS M0749 SPRING



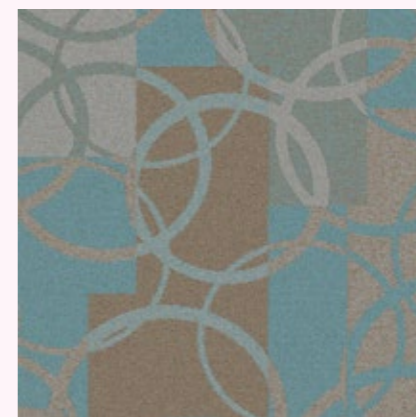
M0749
6640037 SKY
100cm x 100cm



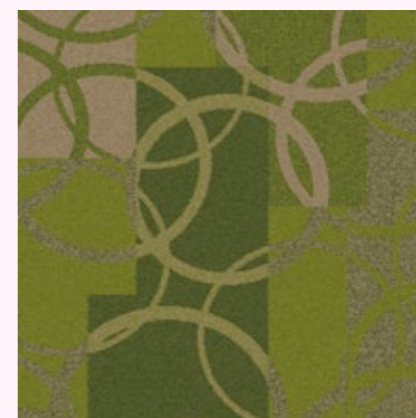
M0749
6640038 FAWN
100cm x 100cm



M0749
6640036 SCARLET
100cm x 100cm



M0749
6640039 POWDER
100cm x 100cm



M0749
6640035 SPRING
100cm x 100cm

Head Over Heels

Head Over Heels



M1032
6640024 LINEN
50cm x 50cm



M1032
6640025 STONE
50cm x 50cm



M1032
6640022 PEBBLE
50cm x 50cm



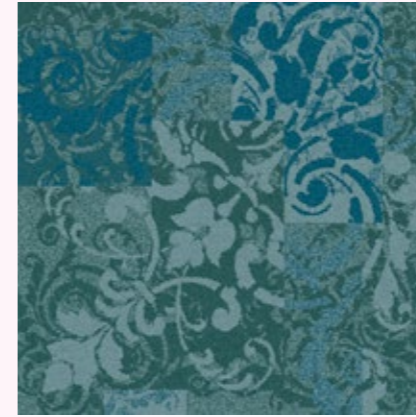
M1032
6640023 SAGE
50cm x 50cm



HEAD OVER HEELS M1032 SAGE



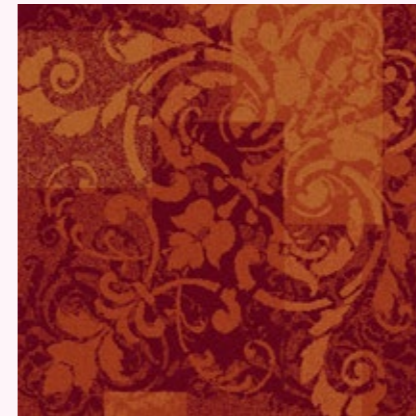
HEAD OVER HEELS M0827 CORNFLOWER



M0827
6640032 AZURE
100cm x 100cm



M0827
6640034 CORNFLOWER
100cm x 100cm



M0827
6640033 SAFFRON
100cm x 100cm



M0827
6640031 FUCHSIA
100cm x 100cm

Head Over Heels

Hip Over History



HIP OVER HISTORY PINE



7191002 PINE
100cm x 100cm



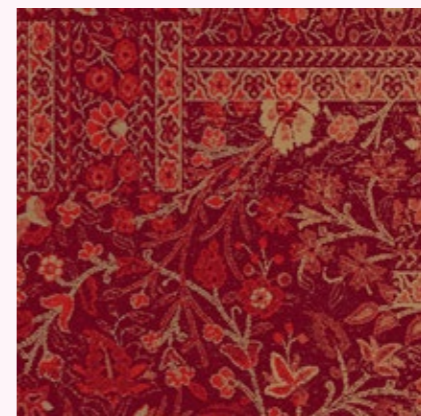
7191001 VINTAGE
100cm x 100cm



7191003 BOUQUET
100cm x 100cm



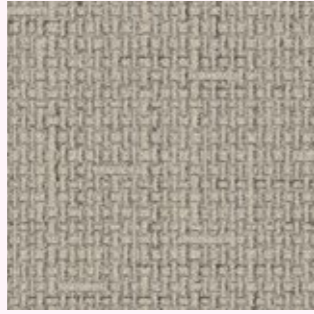
7191004 EDEN
100cm x 100cm



7191005 ORIENT
100cm x 100cm

Hip Over History M0939

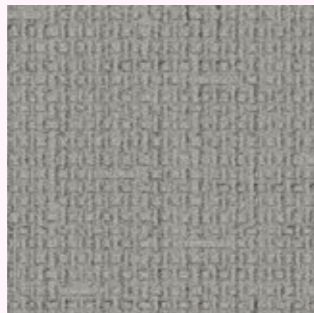
Hip Over History brings a comfortable patina of antique textiles. The patchwork features a tactile and visual texture that gives the illusion of a well-worn floor.



7179003 IVORY
50cm x 50cm



7179001 PEWTER
50cm x 50cm



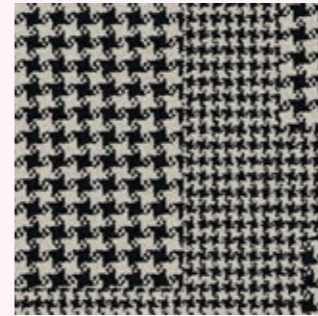
7179002 TITANIUM
50cm x 50cm

RMS 607

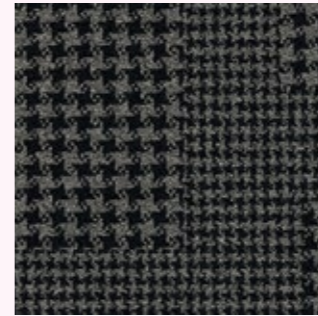
RMS 607

Our Guest Room patterns are sophisticated styles, in a neutral palette.

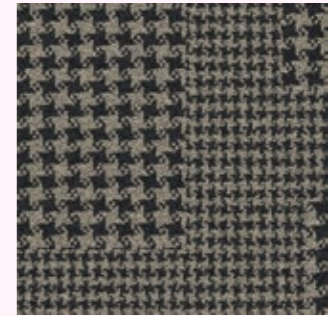




8152009 HOUND B&W
50cm x 50cm



8152004 HOUND BLACK
50cm x 50cm



8152003 HOUND CHARCOAL
50cm x 50cm

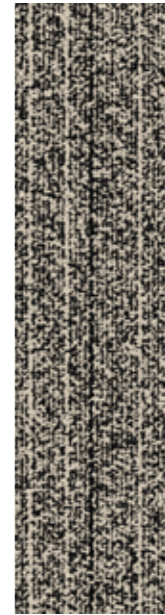
Collins Cottage

Collins Cottage

This classic houndstooth pattern rug will perfectly complement any space and decor. It's like giving your father's favorite old blazer a vibrant new life.



OVEREDGE B&W OVEREDGE



9271001 B&W OVEREDGE
25cm x 100cm

Overedge

Decibel, Darning, Haptic and Overedge

Simple high touch textures that recall woven fabrics and rugs.



Haptic



9274023 LACE
25cm x 100cm



9274021 WHISPER
25cm x 100cm



9274022 BALSAM
25cm x 100cm



Decibel



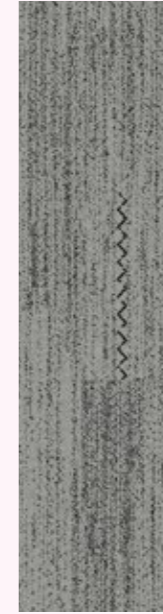
9275001 B&W DECIBEL
25cm x 100cm



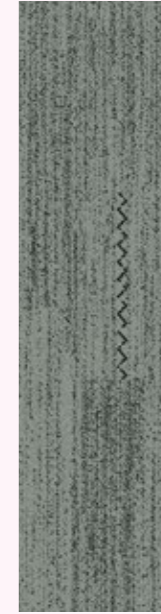
DARNING SILVER



9273019 ALMOND
25cm x 100cm



9273018 SILVER
25cm x 100cm

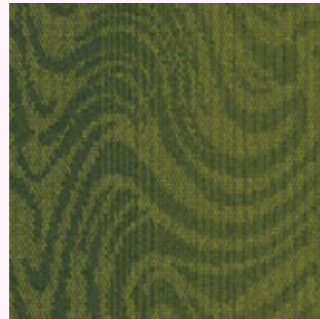


9273020 SAGE
25cm x 100cm

Darning



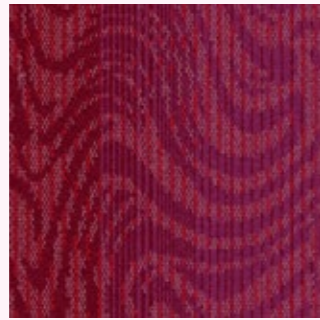
4236012 COBALT
50cm x 50cm



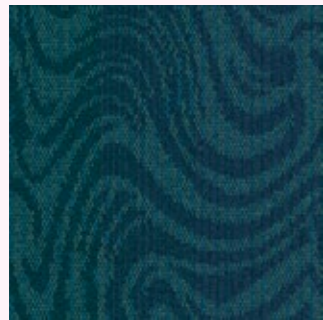
4236011 EMERALD
50cm x 50cm



4236009 TANGERINE
50cm x 50cm



4236008 MAGENTA
50cm x 50cm



4236010 OCEAN
50cm x 50cm

Hydropolis

Liquid swirls overlaid with lines of static interference. Matched by a boldness of colour: a vivid palette creates a futuristic rainbow.



Hydropolis



Interface® Hospitality

Beautiful Luxury Vinyl Tile flooring that performs.

We've designed our LVT and Carpet Tiles to work together seamlessly – with no transition strips. This effortless meeting of hard surfaces, soft textures, endless pattern and colour combinations allows you to create stunning flooring designs.

Together with Interface's truly unique offering of products and services, you'll have everything you need to meet your next design challenge and create spaces people love to be in.

Our LVT designs come with our superior Sound Choice™ backing. So even hard floors can minimise noise, making it easier for you to create spaces for concentration and focus. And as with all interface flooring, all our products are carbon neutral with Carbon Neutral Floors™.



Iridescence

IRIDESCENCE EARTH



A01901 POLAR



A01905 HERB



A01909 REEF



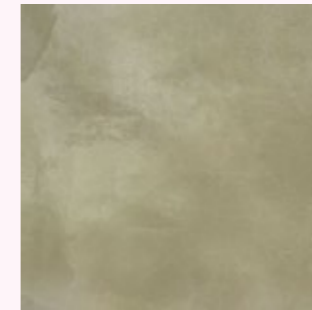
A01902 SHADOW



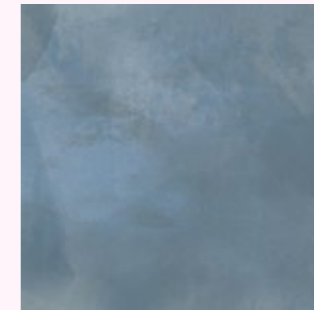
A01906 WAVE



A01910 GOLDEN



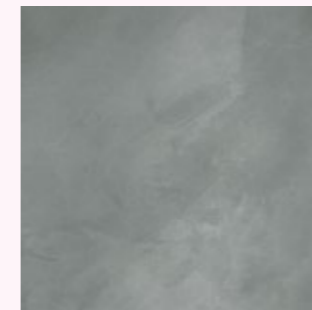
A01903 CLAY



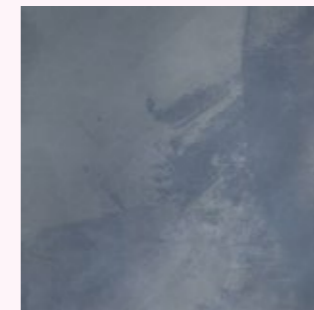
A01907 FROST



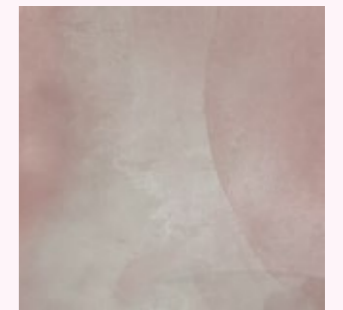
A01911 EARTH



A01904 NIGHT



A01908 INK



A01912 BLOSSOM

Iridescence

Iridescence is inspired by the use of mineral and organic pigments that layer to create diverse hues and abstract painted surfaces. Colours merge with one another in a soft smoky transition that brings a comforting tranquillity to the interior space. The palette encompasses a multitude of colours that excite and inspire.

Level Set® Collection



LEVEL SET TEXTURED WOODGRAINS ANTIQUE OAK

Level Set® Collection

Level Set features 4 types of patterns in a total of 36 colourways: Natural and Textured Woodgrains in the 25 x 100 cm Skinny Planks format, and Stones and Pattern in the 50 x 50 cm square format. The look and feel of the wood patterns ranges from glossy to distressed, while the stone patterns fill the spectrum from subdued to outspoken. Hard and soft tiles come together to create beautiful design options, creating a new world of integrated flooring choices that make contemporary interiors come to life.



LEVEL SET TEXTURED STONES DISTRESSED CONCRETE



A00103 COOL IMPALA MARBLE



A00101 JET MIST

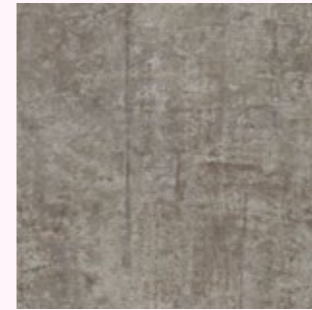
Level Set[®] Collection Stones



LEVEL SET TEXTURED STONES DARK CONCRETE



LEVEL SET NATURAL STONES COOL IMPALA MARBLE



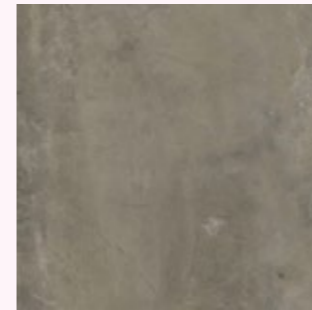
A00304 EMPERADOR GRAY



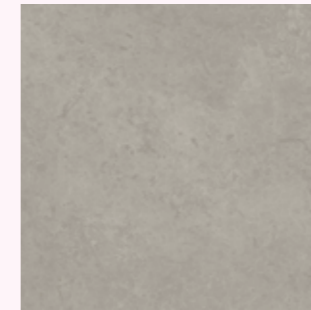
A00301 POLISHED CEMENT



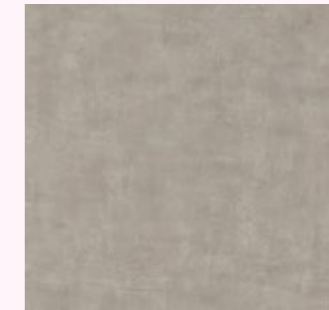
A00302 COOL POLISHED CEMENT



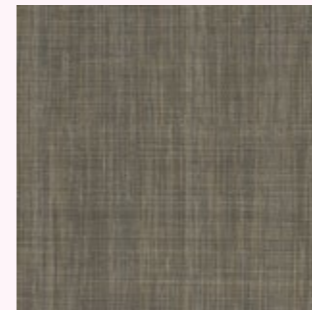
A00303 WARM POLISHED CEMENT



A00308 LIGHT CONCRETE



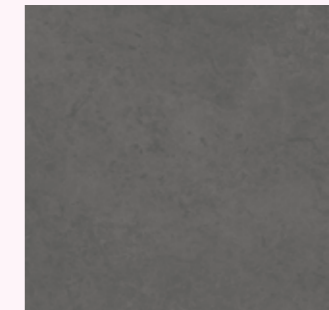
A00311 DISTRESSED CONCRETE



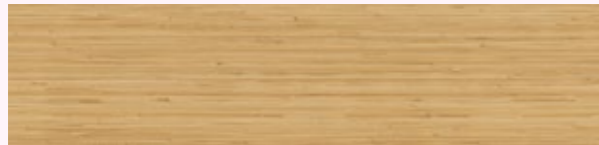
A00307 CHESTNUT HORSEHAIR



A00309 MEDIUM CONCRETE



A00310 DARK CONCRETE



A00214 BAMBOO



A00208 SAND DUNE



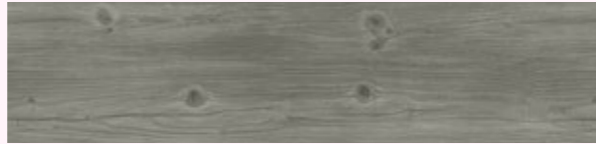
A00212 CEDAR



A00207 WASHED WHEAT



A00210 TEAK



A00206 WINTER GREY



A00204 BEECH



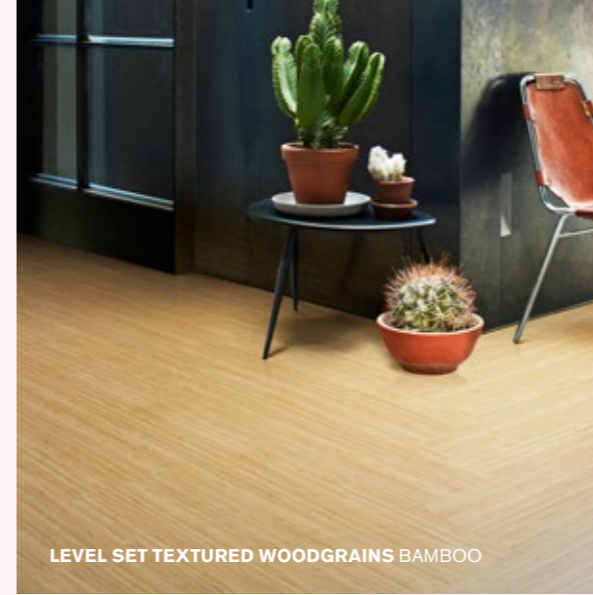
A00205 STORM



A00203 CHESTNUT



A00201 BLACK WALNUT



LEVEL SET TEXTURED WOODGRAINS BAMBOO



A00406 ANTIQUE LIGHT OAK



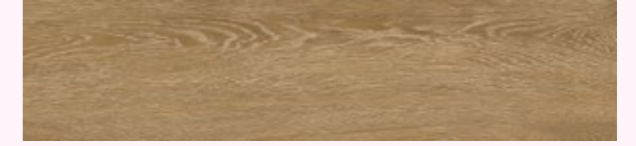
A00407 WHITE WASH



A00415 ANTIQUE OAK



A00417 SILVER DUNE



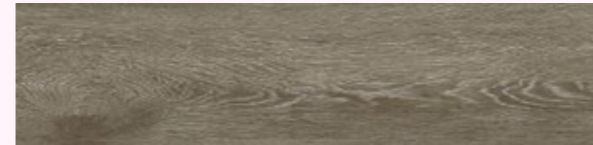
A00419 ANTIQUE ASH OAK



A00416 ANTIQUE DARK OAK



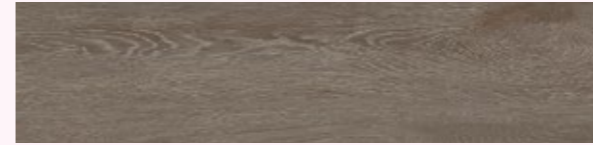
A00403 DISTRESSED HICKORY



A00405 GREY DUNE



A00414 ANTIQUE MAPLE



A00418 CHARCOAL DUNE



A00424 RUSTIC BIRCH



A00423 RUSTIC ASH



A00420 RUSTIC CASHEW



A00421 RUSTIC OAK



A00422 RUSTIC HICKORY



LEVEL SET NATURAL WOODGRAINS BEECH

Level Set® Collection Woodgrains



WALK ABOUT PUMICE

Look Both Ways™ Collection

Look Both Ways™ Collection

Look Both Ways is a collection of LVT and carpet tile patterns combining Zen-like purity with playfulness. Marrying purpose and function with your intention, these styles create landscapes that perform and delight in infinite ways.

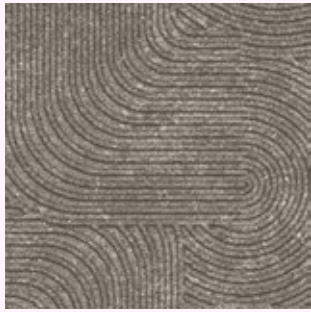
Walk of Life, the bedrock of the LVT collection, is gritty, not polished. Sharing the same urban grey palette, Walk the Aisle sparkles with a luminescent fleck that energizes the surface. Walk About appears carved in ways that conjure pattern-love from the 1920s, 1980s, and today. And finally Walk on By is a vision of pure joy in brights & neutrals. Step, walk or run, but definitely look both ways for design inspiration.



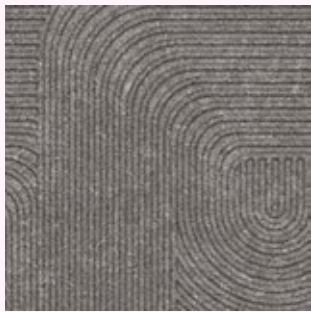
WALK THE AISLE COOL ASH



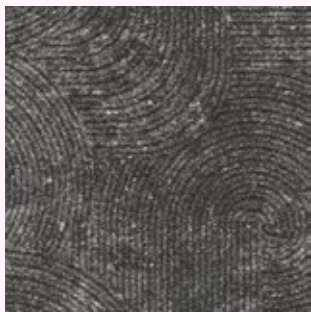
A01401 WARM ASH



A01402 PUMICE



A01403 COOL ASH



A01404 CARBON



Walk About

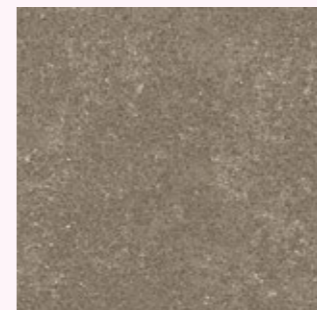
Walk of Life



A01202 PUMICE



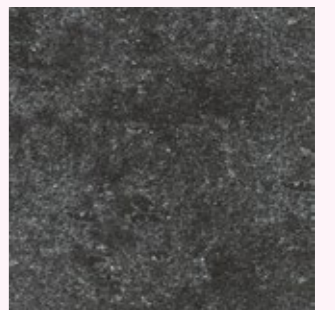
A01204 CARBON



A01201 WARM ASH



A01203 COOL ASH



A01205 CHARCOAL



Walk on By



WALK ON BY POLYCHROME



A01501 POLYCHROME

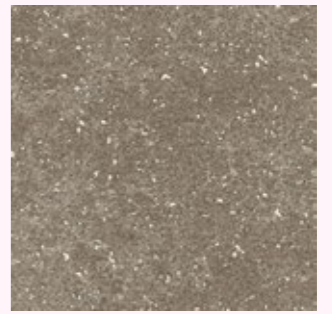


A01502 MONOCHROME

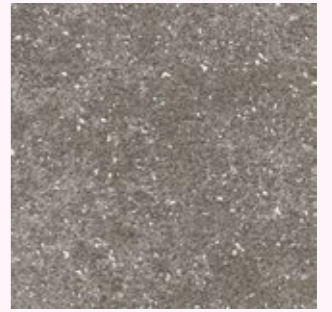


Walk the Aisle

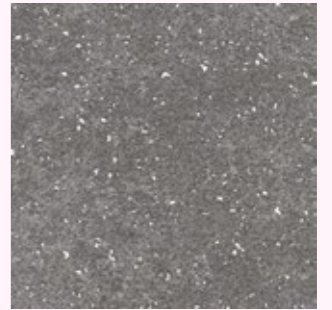
WALK THE AISLE CARBON



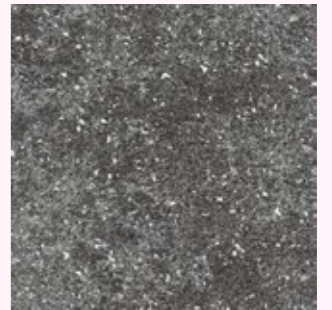
A01301 WARM ASH



A01302 PUMICE



A01303 COOL ASH



A01304 CARBON

Rubber Flooring

Everyone aspires to individuality.

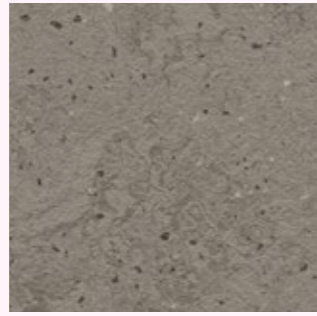
Why should this claim stop at the floor covering?

Our product lines norament[®] and noraplan[®] form a perfectly practical synthesis of design, functionality, and environmental compatibility. We offer the perfect solution to every need and creative idea.





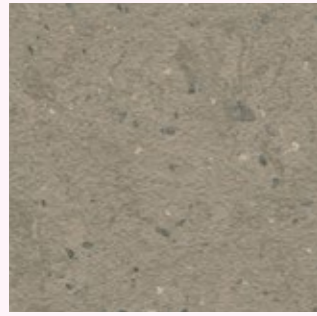
5351



5352



5353



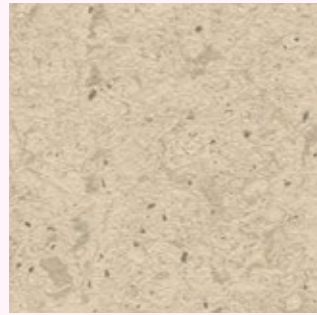
5354



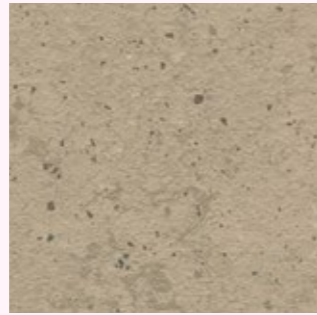
5355



5356



5357



5358

norament® 926 castello

norament® 926 castello

A warm, acoustic-improving alternative to natural stone was the inspiration behind this resilient rubber flooring. Eight timeless subtle, marbled colours with a slightly structured two-tone surface offer you a range that is sure to complement any building from modern to historical, adding a highly representative look.





norament® 926 kivo

In modern design and architecture, inspiring ideas often derive from authentic, original elements. Highly creative workspaces of today often prefer referencing the industrial past. norament 926 kivo is the flooring that perfectly resonates with this modern classic atmosphere.

norament® 926 kivo



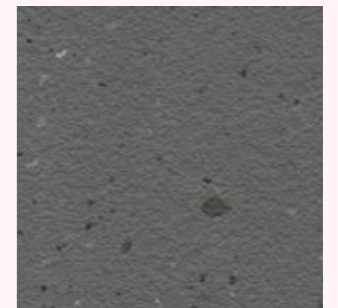
5361



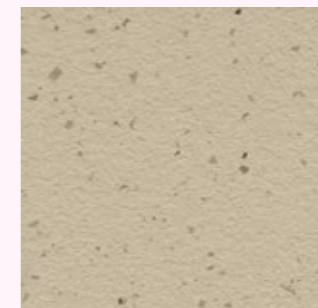
5362



5363



5364



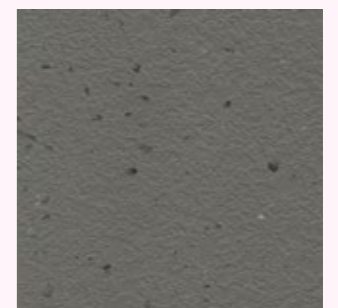
5365



5366



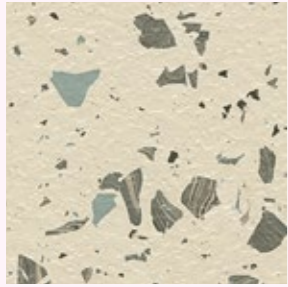
5367



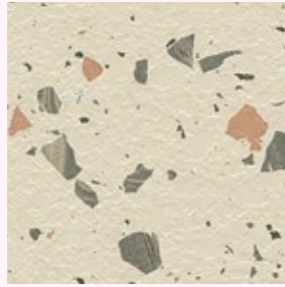
5368

norament® 926 pado

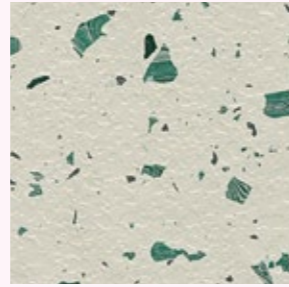
norament 926 pado is a vivid granular design inspired by ancient terrazzo with a slightly structured two-tone surface in various designs. Choose from neutral and elegant or colourful and contrasting to create a unique floor aesthetic.



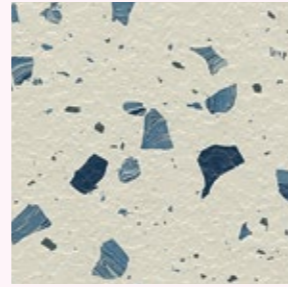
5501



5502



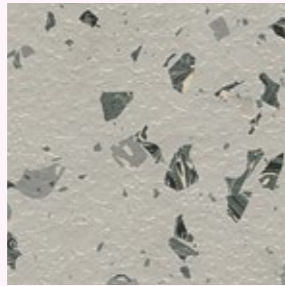
5503



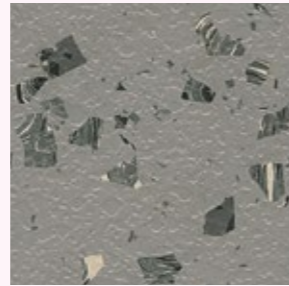
5504



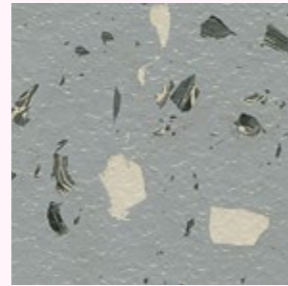
5505



5506



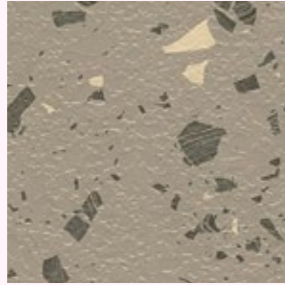
5507



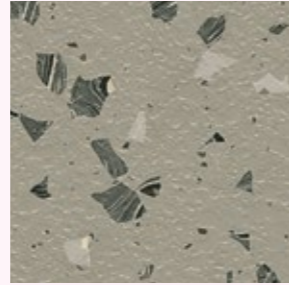
5508



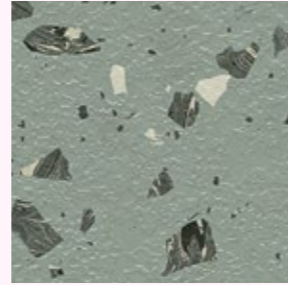
5509



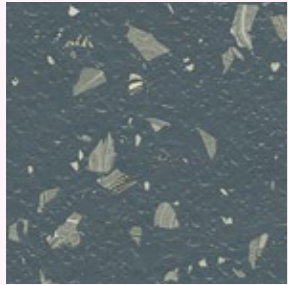
5510



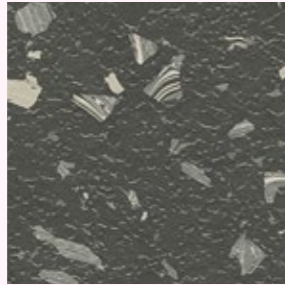
5511



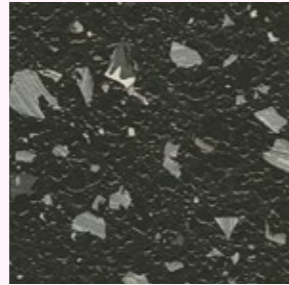
5512



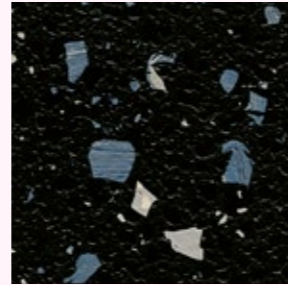
5513



5514



5515



5516



Stairtread norament® 926

One-coloured with classic round pastille for extremely heavy-traffic stairwell areas. Improves footfall sound absorption by 12 dB.



norament® 926



norament® 926 arago



0214



0319



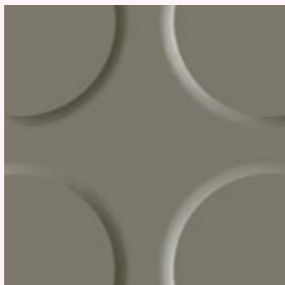
0733



0890



0007



0882



2074



6172



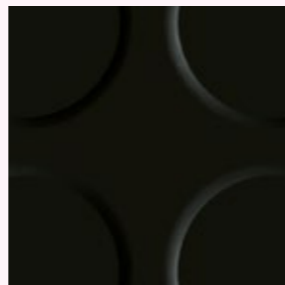
0884



0749



0716



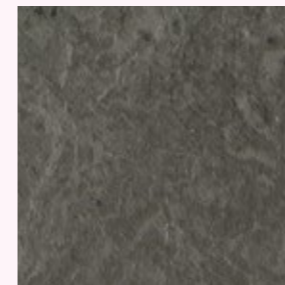
0702



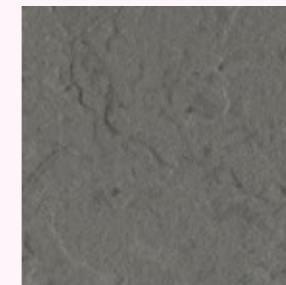
5171



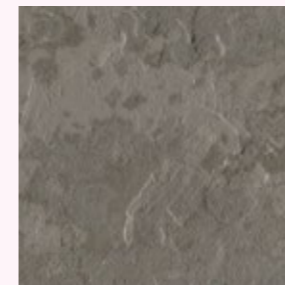
5172



5175



5177



5178



5179

Stairtread norament® 926 arago

Flat, direction-oriented relief structure with fine grain design and modern marbling for extremely heavy-traffic stairwell areas. Improves footfall sound absorption by 12 dB.

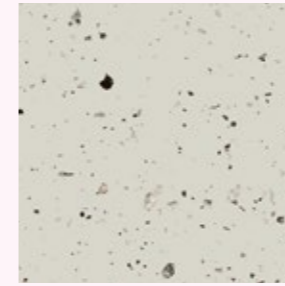
**norament®
926 stairtreads**



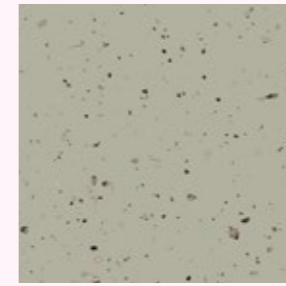
noraplan® unita

noraplan® unita

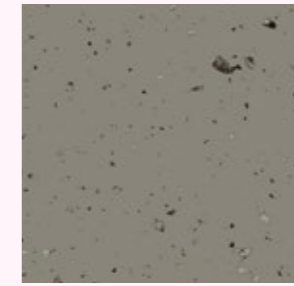
When soft rubber and solid granite unite, something astonishing is made. Real granite chips embedded in a high-quality rubber floor covering create fascinating visual depth. This fusion of opposites results in a timeless and extremely appealing design that will give your project a distinctive character. Unique like the stars in the night sky.



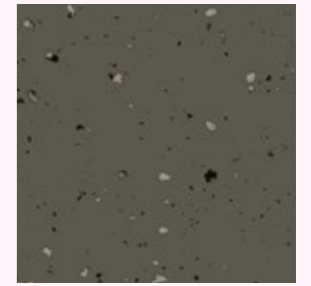
7101



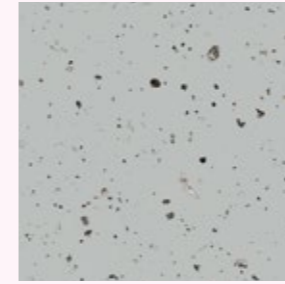
7102



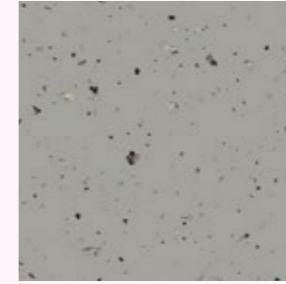
7103



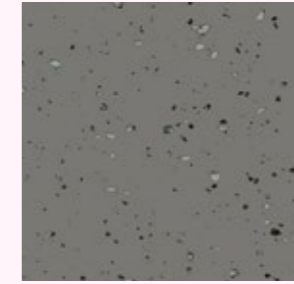
7104



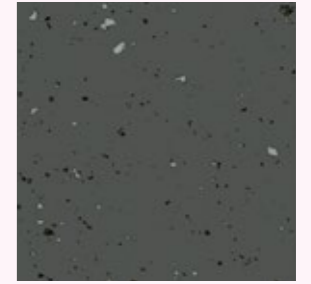
7105



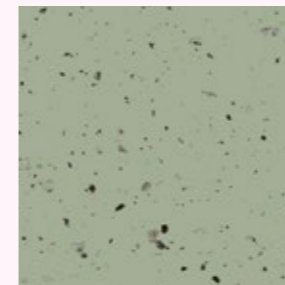
7106



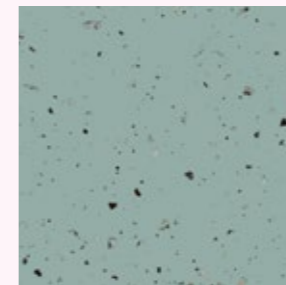
7107



7108



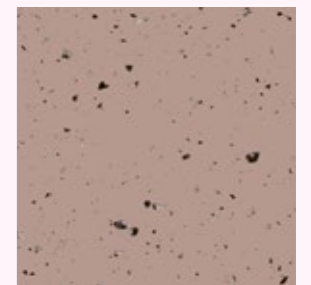
7109



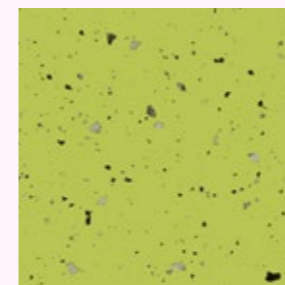
7110



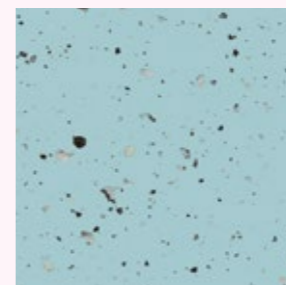
7111



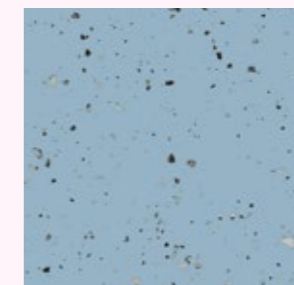
7112



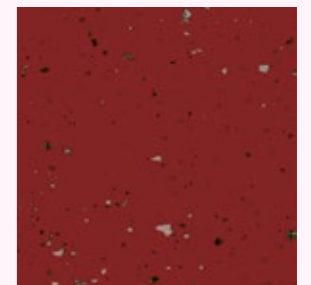
7113



7114



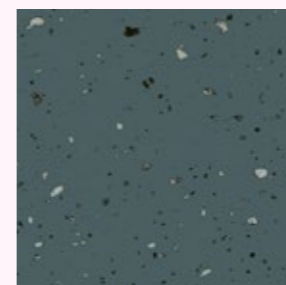
7115



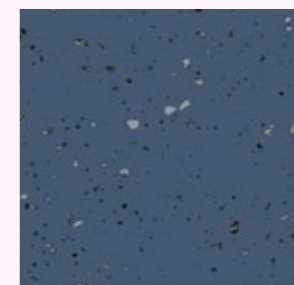
7116



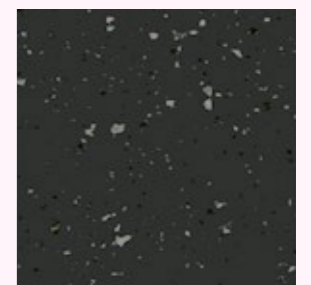
7117



7118



7119



7120

Why Our Modular Carpet Tiles?

With modular flooring, you can mark out distinct areas to highlight architectural tures or reveal subtle surface details. Flooring becomes an adaptable part of your interior finishes. And it's entirely practical:

Better Acoustics

Hush disturbing footsteps and loud conversations. With our flooring, you get softer-feeling and greater noise reduction. You and your guests can be assured that noise reduction aspects are integrated across our product lines.

Easy to Maintain

Our carpet tiles are made with solution-dyed nylon to keep their colour over time, even when harsh cleaning products are used.

Less Waste

Installing a broadloom carpet creates up to 15% waste. We reduce that to 3 or 4%, and even less if using our non-directional products.

Choose flooring that respects the planet

All our products are carbon neutral. And because we know your flooring's impact, we can help with your carbon emission goals. We'll make sure the carbon impact of your flooring is offset – at no extra cost to you. And you'll receive a certificate to show guests you've chosen Carbon Neutral Floors™.

Why Our Modular Resilient LVT?

Integrated System

Say goodbye to transition strips and doubling up. Our modular resilient floorings are made to work as a system with our modular carpet tile. The compatible size and height of our products allows you to integrate modular carpet for an inset rug or an adjacent field – no transition strip required. You'll avoid doubling up on materials and save cost.

Real Flexibility

Create a unique look that lasts. Interface modular resilient LVT makes it easy to extend the life of your floor. From simple maintenance like damp mopping to selectively replacing damaged tiles, your flooring investment will stand the test of time - beautifully and effortlessly.

Circular System

Keep flooring out of the landfill. Our modular resilient LVT is produced with a controlled material stream so it can be reclaimed and recycled into our GlasBac™RE recycled content backing through our ReEntry® program.

And all our LVT products contain 39% recycled content, and are carbon neutral across their full product life cycle.

Noise Reduction

Less distractions. Interface is helping create **+Positive spaces™** with our LVT with Sound Choice™ backing, offering you best-in-class performance for reduced impact sound and floor to floor sound transmission.

The advantages of our nora[®] rubber

High durability

Establish an environment that can stand up to heavy traffic, rolling loads, and years of use. Wear-resistant nora rubber is manufactured for elasticity and density, providing a premium flooring solution that delivers reliable value, year after year. In some settings, nora floor coverings have been on the job for more than 30 years and still maintain a flawless appearance. Save yourself unnecessary renovation work and make your spaces enduringly usable and sustainable.

Permanent resilience

Create a pleasant and comfortable working environment. With the added cushioning of our rubber, every step you take is supported by excellent ergonomics and comfort underfoot. That's because nora is made of resilient material that eases the stress of walking and standing. That means less fatigue, and enhanced health.

Individualization with inlays or custom colours

Elevate your space. Floorings have an enormous impact on the interior and give rooms personality and life. With our rubber inlays, you have limitless room to individualize the flooring design. Or create your very own personal shade through a custom colour to accentuate the surfaces of your project.

Easy maintenance

Maintain a beautiful appearance. Our nora floor coverings convince with their excellent surface properties that ensure an economical and ecological cleaning process. The long-lasting and waterproof rubber facilitates the daily cleaning procedures ensuring an excellent impression day after day.

Carpet Technical Specifications

	Portmanteau			Luxury Collection		Mod Café
	PM19 [page 5]	PM39 [page 7]	PM49 [page 9]	LC02 [page 11]	LC05 [page 13]	[page 15]
Product Definition	Tapestry Tufted Patterned Structured Loop Tile	Tapestry Tufted Patterned Structured Loop Tile	Tapestry Tufted Patterned Structured Loop Tile	Tapestry Tufted Patterned Structured Tip Sheared Pile	Tapestry Tufted Patterned Structured Tip Sheared Pile	Tapestry Tufted Patterned Structured Loop Tile
Pile Material	100% Recycled Solution Dyed Nylon	100% Recycled Solution Dyed Nylon	100% Recycled Solution Dyed Nylon	100% Recycled Solution Dyed Nylon	100% Recycled Solution Dyed Nylon	100% Recycled Solution Dyed Nylon
Pile Yarn Weight	1034 g/m ² ± 5%	1034 g/m ² ± 5%	1034 g/m ² ± 5%	1449 g/m ² ± 5%	1319 g/m ² ± 5%	1011 g/m ² ± 5%
Total Weight	4565 g/m ² ± 5%	4565 g/m ² ± 5%	4565 g/m ² ± 5%	4936 g/m ² ± 5%	4678 g/m ² ± 5%	4518 g/m ² ± 5%
Pile Height	5,7 mm + 15% / - 10%	5,1 mm + 15% / - 10%	5,4 mm + 15% / - 10%	6,4 mm + 15% / - 10%	5,7 mm + 15% / - 10%	4,1 mm + 15% / - 10%
Total Thickness	9,7 mm ± 0,5 mm	9,2 mm ± 0,5 mm	9,5 mm ± 0,5 mm	9,9 mm ± 0,5 mm	9,9 mm ± 0,5 mm	8,2 mm ± 0,5 mm
Gauge / ends per 10 cm	1/10 – 39,4	1/10 – 39,4	1/10 – 39,4	1/10 – 39,4	1/10 – 39,4	1/10 – 39,4
Tuft per m²	120,170 ± 5%	120,170 ± 5%	120,170 ± 5%	130,320 ± 5%	130,020 ± 5%	124,110 ± 5%
Backing Type	CQuest™Bio	CQuest™Bio	CQuest™Bio	CQuest™Bio	CQuest™Bio	CQuest™Bio
Wear Classification EN 1307	Heavy Contract Class 33 / LC3	Heavy Contract Class 33 / LC2	Heavy Contract Class 33 / LC3	Heavy Contract Class 33 / LC4	Heavy Contract Class 33 / LC4	Heavy Contract Class 33 / LC3
Rating of Sound Absorption EN ISO 11654	α _w 0,20	α _w 0,20	α _w 0,20	α _w 0,20	α _w 0,20	α _w 0,20
Style	7968	8063	8064	2396	2377	8150
Tile Size	50 x 100cm	50 x 100cm	50 x 100cm	100 x 100cm	50 x 50cm	50 x 50cm
Tiles per box	16	16	16	Palletised	12	16
Carbon Footprint	4,24 kg CO ₂	4,24 kg CO ₂	4,24 kg CO ₂	5,33 kg CO ₂	4,99 kg CO ₂	3,95 kg CO ₂
Recycled Content	83,0%	83,0%	83,0%	84,4%	84,0%	84,6%

 DOP: 1037-128446 EN 14041:2004 Notified Body - 0493 COC 0493 – CPR – 0181 For use as floor covering in buildings	 DOP: 1037-128446 EN 14041:2004 Approved Body - 8515 COC 8515 – CPR – 0181 For use as floor covering in buildings	 DOP: 1037-128446 EN 14041:2004 Notified Body - 0493 COC 0493 – CPR – 0181 For use as floor covering in buildings	 DOP: 1037-128446 EN 14041:2004 Approved Body - 8515 COC 8515 – CPR – 0181 For use as floor covering in buildings	 DOP: 1037-128446 EN 14041:2004 Notified Body - 0493 COC 0493 – CPR – 0181 For use as floor covering in buildings	 DOP: 1037-128446 EN 14041:2004 Approved Body - 8515 COC 8515 – CPR – 0181 For use as floor covering in buildings	 DOP: 1037-128460 EN 14041:2004 Notified Body - 0493 COC 0493 – CPR – 0181 For use as floor covering in buildings	 DOP: 1037-128460 EN 14041:2004 Approved Body - 8515 COC 8515 – CPR – 0181 For use as floor covering in buildings	 DOP: 1037-128593 EN 14041:2004 Notified Body - 0493 COC 0493 – CPR – 0181 For use as floor covering in buildings	 DOP: 1037-128593 EN 14041:2004 Approved Body - 8515 COC 8515 – CPR – 0181 For use as floor covering in buildings	 DOP: 1037-128372 EN 14041:2004 Notified Body - 0493 COC 0493 – CPR – 0181 For use as floor covering in buildings	 DOP: 1037-128372 EN 14041:2004 Approved Body - 8515 COC 8515 – CPR – 0181 For use as floor covering in buildings

Carpet Technical Specifications

	Sampa	City of Angels	A Cut Above	Head Over Heels		
	[page 17]	[page 19]	M0833 [page 21]	M0684 [page 23]	M0749 [page 25]	M0827 [page 29]
Product Definition	Tapestry Tufted Patterned Structured Tip Sheared Pile	Tapestry Tufted Patterned Structured Loop Tile	Tapestry Tufted Patterned Structured Tip Sheared Pile	Tapestry Tufted Patterned Structured Loop Tile	Tapestry Tufted Patterned Structured Loop Tile	Tapestry Tufted Patterned Structured Loop Tile
Pile Material	100% Recycled Solution Dyed Nylon	100% Recycled Solution Dyed Nylon	100% Recycled Solution Dyed Nylon	100% Recycled Solution Dyed Nylon	100% Recycled Solution Dyed Nylon	100% Recycled Solution Dyed Nylon
Pile Yarn Weight	1228 g/m ² ± 5%	1182 g/m ² ± 5%	888 g/m ² ± 5%	844 g/m ² ± 5%	844 g/m ² ± 5%	844 g/m ² ± 5%
Total Weight	4848 g/m ² ± 5%	4452 g/m ² ± 5%	4643 g/m ² ± 5%	4536 g/m ² ± 5%	4536 g/m ² ± 5%	4536 g/m ² ± 5%
Pile Height	5.2 mm + 15% / - 10%	4.5 mm + 15% / - 10%	4.2 mm + 15% / - 10%	3.8 mm + 15% / - 10%	3.5 mm + 15% / - 10%	3.6 mm + 15% / - 10%
Total Thickness	9.5 mm ± 0.5 mm	8.2 mm ± 0.5 mm	9.1 mm ± 0.5 mm	8.1 mm ± 0.5 mm	8.1 mm ± 0.5 mm	8.1 mm ± 0.5 mm
Gauge / ends per 10 cm	1/10 – 39.4	1/10 – 39.4	1/10 – 39.4	1/10 – 39.4	1/10 – 39.4	1/10 – 39.4
Tuft per m²	141,840 ± 5%	165,480 ± 5%	110,320 ± 5%	110,320 ± 5%	110,320 ± 5%	110,320 ± 5%
Backing Type	CQuest™Bio	CQuest™Bio	CQuest™Bio	CQuest™Bio	CQuest™Bio	CQuest™Bio
Wear Classification EN 1307	Heavy Contract Class 33 / LC3	Heavy Contract Class 33 / LC3	Heavy Contract Class 33 / LC3	Heavy Contract Class 33 / LC2	Heavy Contract Class 33 / LC2	Heavy Contract Class 33 / LC2
Rating of Sound Absorption EN ISO 11654	α _w 0.20	α _w 0.20	α _w 0.20	α _w 0.20	α _w 0.20	α _w 0.20
Style	8192	8130	7274	6640	6640	6640
Tile Size	50 x 50cm	50 x 50cm	100 x 100cm	100 x 100cm	100 x 100cm	100 x 100cm
Tiles per box	12	16	Palletised	Palletised	Palletised	Palletised
Carbon Footprint	4,75 kg CO ₂	4,60 kg CO ₂	3,86 kg CO ₂	3,70 kg CO ₂	3,70 kg CO ₂	3,70 kg CO ₂
Recycled Content	83,8%	83,5%	82,6%	82,4%	82,4%	82,4%

<p>DOP: 1037-128457 EN 14041:2004 Notified Body - 0493 COC 0493 – CPR – 0181 For use as floor covering in buildings</p>	<p>DOP: 1037-128457 EN 14041:2004 Approved Body - 8515 COC 8515 – CPR – 0181 For use as floor covering in buildings</p>	<p>DOP: 1037-128449 EN 14041:2004 Notified Body - 0493 COC 0493 – CPR – 0181 For use as floor covering in buildings</p>	<p>DOP: 1037-128449 EN 14041:2004 Approved Body - 8515 COC 8515 – CPR – 0181 For use as floor covering in buildings</p>	<p>DOP: 1037-128592 EN 14041:2004 Notified Body - 0493 COC 0493 – CPR – 0181 For use as floor covering in buildings</p>	<p>DOP: 1037-128592 EN 14041:2004 Approved Body - 8515 COC 8515 – CPR – 0181 For use as floor covering in buildings</p>	<p>DOP: 1037-128385 EN 14041:2004 Notified Body - 0493 COC 0493 – CPR – 0181 For use as floor covering in buildings</p>	<p>DOP: 1037-128385 EN 14041:2004 Approved Body - 8515 COC 8515 – CPR – 0181 For use as floor covering in buildings</p>	<p>DOP: 1037-128385 EN 14041:2004 Notified Body - 0493 COC 0493 – CPR – 0181 For use as floor covering in buildings</p>	<p>DOP: 1037-128385 EN 14041:2004 Approved Body - 8515 COC 8515 – CPR – 0181 For use as floor covering in buildings</p>	<p>DOP: 1037-128385 EN 14041:2004 Notified Body - 0493 COC 0493 – CPR – 0181 For use as floor covering in buildings</p>	<p>DOP: 1037-128385 EN 14041:2004 Approved Body - 8515 COC 8515 – CPR – 0181 For use as floor covering in buildings</p>
<p>≥0.30, ≤2.0 kV, ≤10⁹Ω, 27dB, 0.20</p>	<p>≥0.30, ≤2.0 kV, ≤10⁹Ω, 25dB, 0.20</p>	<p>≥0.30, ≤2.0 kV, ≤10⁹Ω, 26dB, 0.20</p>	<p>≥0.30, ≤2.0 kV, ≤10⁹Ω, 26dB, 0.20</p>	<p>≥0.30, ≤2.0 kV, ≤10⁹Ω, 26dB, 0.20</p>	<p>≥0.30, ≤2.0 kV, ≤10⁹Ω, 26dB, 0.20</p>						
<p>≥7, ≥2.4</p>	<p>≥7, ≥2.4</p>	<p>≥7, ≥2.4</p>	<p>≥7, ≥2.4</p>	<p>≥7, ≥2.4</p>	<p>≥7, ≥2.4</p>						
<p>D00BC98, 100% Recycled Nylon, MONOLITHIC</p>	<p>7FBFD73A, 100% Recycled Nylon, MONOLITHIC</p>	<p>SBAEEB69, 100% Recycled Nylon, NON-DIRECTIONAL</p>	<p>15C056EF, 100% Recycled Nylon, NON-DIRECTIONAL</p>	<p>15C056EF, 100% Recycled Nylon, NON-DIRECTIONAL</p>	<p>15C056EF, 100% Recycled Nylon, NON-DIRECTIONAL</p>						

Carpet Technical Specifications







	Head Over Heels	Hip Over History	RMS 607	Collins Cottage	Overedge	Haptic
	M1032 [page 27]	M0939 [page 31]	[page 33]	[page 35]	[page 37]	[page 39]
Product Definition	Tapestry Tufted Patterned Structured Loop Tile	Tapestry Tufted Patterned Structured Loop Tile	Tapestry Tufted Patterned Structured Loop Tile	Tapestry Tufted Patterned Structured Loop Tile	Tufted Patterned Shag Cut Tile	Tapestry Tufted Patterned Structured Loop Tile
Pile Material	100% Recycled Solution Dyed Nylon	100% Recycled Solution Dyed Nylon	100% Recycled Solution Dyed Nylon	100% Recycled Solution Dyed Nylon	100% Recycled Solution Dyed Nylon	100% Recycled Solution Dyed Nylon
Pile Yarn Weight	844 g/m ² ± 5%	814 g/m ² ± 5%	832 g/m ² ± 5%	882 g/m ² ± 5%	1424 g/m ² ± 5%	814 g/m ² ± 5%
Total Weight	4536 g/m ² ± 5%	4326 g/m ² ± 5%	4270 g/m ² ± 5%	4364 g/m ² ± 5%	4769 g/m ² ± 5%	4284 g/m ² ± 5%
Pile Height	3.9 mm +15% / - 10%	3.5 mm +15% / - 10%	4.1 mm +15% / - 10%	3.9 mm +15% / - 10%	8.9 mm +15% / - 10%	2.9 mm +15% / - 10%
Total Thickness	8.1 mm ± 0.5 mm	7.7 mm ± 0.5 mm	8.2 mm ± 0.5 mm	7.8 mm ± 0.5 mm	11.6 mm ± 0.5 mm	6.9 mm ± 0.5 mm
Gauge / ends per 10 cm	1/10 – 39.4	1/10 – 39.4	1/10 – 39.4	1/10 – 39.4	5/32 – 25.2	1/10 – 39.4
Tuft per m²	110,320 ± 5%	118,200 ± 5%	110,320 ± 5%	124,110 ± 5%	88,200 ± 5%	138,306 ± 5%
Backing Type	CQuest™Bio	CQuest™Bio	CQuest™Bio	CQuest™Bio	CQuest™Bio	CQuest™Bio
Wear Classification EN 1307	Heavy Contract Class 33 / LC2	Heavy Contract Class 33 / LC2	Heavy Contract Class 33 / LC2	Heavy Contract Class 33 / LC2	General Contract Class 32 / LC5	Heavy Contract Class 33 / LC2
Rating of Sound Absorption EN ISO 11654	α _w 0.20	α _w 0.20	α _w 0.20	α _w 0.20	α _w 0.20	α _w 0.20
Style	6640	7191	7179	8152	9271	9274
Tile Size	50 x 50cm	100 x 100cm	50 x 50cm	50 x 50cm	25 x 100cm	25 x 100cm
Tiles per box	16	Palletised	16	16	10	20
Carbon Footprint	3,70 kg CO ₂	3,66 kg CO ₂	3,71 kg CO ₂	3,53 kg CO ₂	5,21 kg CO ₂	3,33 kg CO ₂
Recycled Content	82,4%	82,1%	82,1%	84,1%	84,7%	83,9%

 DOP: 1037-128385 EN 14041:2004 Notified Body - 0493 COC 0493 – CPR – 0181 For use as floor covering in buildings	 DOP: 1037-128385 EN 14041:2004 Approved Body - 8515 COC 8515 – CPR – 0181 For use as floor covering in buildings	 DOP: 1037-128455 EN 14041:2004 Notified Body - 0493 COC 0493 – CPR – 0181 For use as floor covering in buildings	 DOP: 1037-128455 EN 14041:2004 Approved Body - 8515 COC 0321/20664-02/E00-00 For use as floor covering in buildings	 DOP: 1037-128450 EN 14041:2004 Notified Body - 0493 COC 0493 – CPR – 0181 For use as floor covering in buildings	 DOP: 1037-128450 EN 14041:2004 Approved Body - 8515 COC 8515 – CPR – 0181 For use as floor covering in buildings
 ≥0.30, ≤2.0 kV, ≤10 ⁹ Ω, 26dB, 0.20 ≥7, ≥2.4	 ≥0.30, ≤2.0 kV, ≤10 ⁹ Ω, 26dB, 0.20 ≥7, ≥2.4	 ≥0.30, ≤2.0 kV, ≤10 ⁹ Ω, 26dB, 0.20 ≥7, ≥2.4	 ≥0.30, ≤2.0 kV, ≤10 ⁹ Ω, 26dB, 0.20 ≥7, ≥2.4	 ≥0.30, ≤2.0 kV, ≤10 ⁹ Ω, 26dB, 0.20 ≥7, ≥2.4	 ≥0.30, ≤2.0 kV, ≤10 ⁹ Ω, 26dB, 0.20 ≥7, ≥2.4
 100% Recycled Nylon	 NON DIRECTIONAL	 100% Recycled Nylon	 NON DIRECTIONAL	 100% Recycled Nylon	 MONOLITHIC QUARTER TURN

 DOP: 1037-128381 EN 14041:2004 Notified Body - 0493 COC 0493 – CPR – 0181 For use as floor covering in buildings	 DOP: 1037-128381 EN 14041:2004 Approved Body - 8515 COC 8515 – CPR – 0181 For use as floor covering in buildings	 DOP: 1037-127049 EN 14041:2004 Notified Body - 0493 COC 0493 – CPR – 0182 For use as floor covering in buildings	 DOP: 1037-127049 EN 14041:2004 Approved Body - 8515 COC 8515 – CPR – 0182 For use as floor covering in buildings	 DOP: 1037-127030 EN 14041:2004 Notified Body - 0493 COC 0493 – CPR – 0181 For use as floor covering in buildings	 DOP: 1037-127030 EN 14041:2004 Approved Body - 8515 COC 8515 – CPR – 0181 For use as floor covering in buildings
 ≥0.30, ≤2.0 kV, ≤10 ⁹ Ω, 25dB, 0.20 ≥7, ≥2.4	 ≥0.30, ≤2.0 kV, ≤10 ⁹ Ω, 25dB, 0.20 ≥7, ≥2.4	 ≥0.30, ≤2.0 kV, ≤10 ⁹ Ω, 30dB, 0.20 ≥7, ≥2.4	 ≥0.30, ≤2.0 kV, ≤10 ⁹ Ω, 30dB, 0.20 ≥7, ≥2.4	 ≥0.30, ≤2.0 kV, ≤10 ⁹ Ω, 26dB, 0.20 ≥7, ≥2.4	 ≥0.30, ≤2.0 kV, ≤10 ⁹ Ω, 26dB, 0.20 ≥7, ≥2.4
 100% Recycled Nylon	 NON DIRECTIONAL	 100% Recycled Nylon	 HERRINGBONE ASHALR	 100% Recycled Nylon	 HERRINGBONE ASHALR

Carpet Technical Specifications

	Decibel	Darning	Hydropolis
	[page 41]	[page 43]	[page 45]
Product Definition	Tapestry Tufted Patterned Structured Loop Tile	Tapestry Tufted Patterned Structured Loop Tile	Tufted Patterned Textured Loop Pile
Pile Material	100% Recycled Solution Dyed Nylon	100% Recycled Solution Dyed Nylon	100% Recycled Solution Dyed Nylon
Pile Yarn Weight	746 g/m ² ± 5%	746 g/m ² ± 5%	795 g/m ² ± 5%
Total Weight	4096 g/m ² ± 5%	4224 g/m ² ± 5%	4151 g/m ² ± 5%
Pile Height	3.2 mm + 15% / - 10%	3.3 mm + 15% / - 10%	3.6 mm + 15% / - 10%
Total Thickness	7.0 mm ± 0.5 mm	6.9 mm ± 0.5 mm	7.0 mm ± 0.5 mm
Gauge / ends per 10 cm	1/10 – 39.4	1/10 – 39.4	1/12 – 47.2
Tuft per m²	143,908 ± 5%	137,942 ± 5%	189,911 ± 5%
Backing Type	CQuest™Bio	CQuest™Bio	CQuest™Bio
Wear Classification EN 1307	Heavy Contract Class 33 / LC2	Heavy Contract Class 33 / LC2	Heavy Contract Class 33 / LC3
Rating of Sound Absorption EN ISO 11654	α _w 0.20	α _w 0.20	α _w 0.20
Style	9275	9273	4236
Tile Size	25 x 100cm	25 x 100cm	50 x 50cm
Tiles per box	20	20	16
Carbon Footprint	3,12 kg CO ₂	3,12 kg CO ₂	3,61 kg CO ₂
Recycled Content	83,6%	83,6%	83,8%

 DOP: 1037-127009 EN 14041:2004 Notified Body - 0493 COC 0493 – CPR – 0182 For use as floor covering in buildings	 DOP: 1037-127009 EN 14041:2004 Approved Body - 8515 COC 0321/21671-01/E00-00 For use as floor covering in buildings	 DOP: 1037-127008 EN 14041:2004 Notified Body - 0493 COC 0493 – CPR – 0181 For use as floor covering in buildings	 DOP: 1037-127008 EN 14041:2004 Approved Body - 8515 COC 0321/20664-02/E00-00 For use as floor covering in buildings	 DOP: 1037-128376 EN 14041:2004 Notified Body - 0493 COC 0493 – CPR – 0181 For use as floor covering in buildings	 DOP: 1037-128376 EN 14041:2004 Approved Body - 8515 COC 0321/20664-02/E00-00 For use as floor covering in buildings
--	---	--	---	--	---

Sound Absorption

	EN ISO 354					
	125HZ	250HZ	500HZ	1000HZ	2000HZ	4000HZ
Sampa	-0.02	0.06	0.08	0.20	0.34	0.40
A Cut Above MO833	0.04	0.05	0.08	0.22	0.45	0.58
City Of Angels	0.02	0.03	0.09	0.27	0.45	0.57
Head Over Heels MO684	0.04	0.05	0.09	0.22	0.45	0.58
Head Over Heels MO749	0.04	0.05	0.09	0.22	0.45	0.58
Head Over Heels MO827	0.04	0.05	0.09	0.22	0.45	0.58
Head Over Heels M1032	0.04	0.05	0.09	0.22	0.45	0.58
Hip Over History M0939	0.04	0.05	0.09	0.22	0.45	0.58
LC02	0.02	0.03	0.09	0.27	0.45	0.57
LC05	-0.02	0.06	0.08	0.20	0.34	0.40
Portmanteau 19	0.02	0.03	0.09	0.27	0.45	0.57
Portmanteau 39	0.02	0.03	0.09	0.27	0.45	0.57
Portmanteau 49	0.02	0.03	0.09	0.27	0.45	0.57
RMS 607	0.04	0.05	0.09	0.22	0.45	0.58
Collins Cottage	0.02	0.03	0.09	0.27	0.45	0.57
Mod Café	0.02	0.03	0.09	0.27	0.45	0.57
Hydropolis	-0.02	0.06	0.08	0.20	0.34	0.40
Overedge	0.02	0.06	0.11	0.27	0.41	0.51
Haptic	0.04	0.05	0.09	0.22	0.45	0.58
Decibel	0.04	0.05	0.09	0.22	0.45	0.58
Darning	0.04	0.05	0.09	0.22	0.45	0.58

LVT Product Specifications

Product Definition	High Performance Luxury Vinyl Tile Contains 39% Pre-Consumer Recycled Content
Finish	Ceramor™ - UV Stabilized Ceramic Bead Coating
Wear Layer Thickness	0.55 mm (EN ISO 24340)
Total Weight	6880 g/m ² (EN ISO 23997)
Total Thickness	4.5 mm (EN ISO 24346)
Backing Type	Sound Choice™ Acoustic Backing
Wear Classification	EN ISO 10874 33 Heavy Commercial / 42 General Light Industrial
Radiant Panel	Euroclass Bfl s1 (EN 13501)
Dimensional Stability	≤ 0.25 % (ISO 23999)
Curling	≤ 2 mm (ISO 23999)
Flexibility	Method A - Pass (EN ISO 24344)
Abrasion Resistance	Group T (EN 660-2)
Residual Indentation	≤ 0.2 mm (EN ISO 24343-1)
Chemical Resistance	(EN ISO 26987) Very Good
Impact Sound Insulation (ΔLw)	16 dB (EN ISO 10140-3)
Determination of Anti-Slip	R10 (unless mentioned in the table aside)
Pendulum Dry 4S	36+ Low slip potential (BS 7976-2)

CE

17

Interface European Manufacturing B.V.
Industrielaan 15
3925 BD
Scherpenzeel
The Netherlands

DOP PBRG – AHCK3R

EN 14041:2004
Notified Body - 0493

Resilient floor covering for internal use.
Classification Class 33/42 (EN ISO 10874)
Reaction to fire Class Bfl-s1 (see EN 14041, clause 4.1)
Slip resistance Class DS (See EN 14041, clause 4.5)
Formaldehyde E1 (see EN 14041, clause 4.3)
Anti-static <2.0kV (See EN14041, clause 4.6.1)

www.interface.com/lvt-emea

UK CA

21

Interface European Manufacturing B.V.
Industrielaan 15
3925 BD
Scherpenzeel
The Netherlands

DOP PBRG – AHCK3R

EN 14041:2004
Approved Body - 0321

Resilient floor covering for internal use.
Classification Class 33/42 (EN ISO 10874)
Reaction to fire Class Bfl-s1 (see EN 14041, clause 4.1)
Slip resistance Class DS (See EN 14041, clause 4.5)
Formaldehyde E1 (see EN 14041, clause 4.3)
Anti-static <2.0kV (See EN14041, clause 4.6.1)

www.interface.com/lvt-emea

Compliant with:

- AgBB
- LEED EQ 4.3 credit

EMISONS DANS L'AIR INTERIEUR

A+

A+ A B C

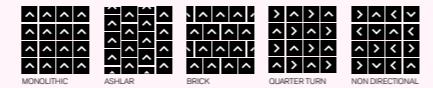
33 42

≥0.30 <2.0 kV

16dB ≥ 7

L NCS Bfl-s1

- 50 x50cm - 2.5m² Box (EN ISO 24342)**
- Iridescence
 - Level Set Collection - Natural Stones
 - Level Set Collection - Textured Stones
 - Walk About
 - Walk of Life
 - Walk on By
 - Walk the Aisle



- 25 x 100 cm - 2.5m² Box (EN ISO 24342)**
- Brushed Lines
 - Drawn Lines
 - Level Set Collection - Natural Woodgrains
 - Level Set Collection - Textured Woodgrains



Determination of Anti-Slip - All products R10 unless mentioned in the table below

Product	Colour No	Colour Name	Slip Resistance Ramp Test - R value
Level Set Collection - Natural Stones	A00103	Cool Impala Marble	R9
Level Set Collection - Textured Stones	A00301	Polished Cement	R9
	A00302	Cool Polished Cement	R9
	A00303	Warm Polished Cement	R9
	A00304	Emperador Gray	R9
Level Set Collection - Natural Woodgrains	A00201	Black Walnut	R9
	A00203	Chestnut	R9
	A00204	Beech	R9
	A00205	Storm	R9
	A00206	Winter Grey	R9
	A00207	Washed Wheat	R9
	A00208	Sand Dune	R9
Level Set Collection - Textured Woodgrains	A00403	Distressed Hickory	R9
	A00407	White Wash	R9
	A00414	Antique Maple	R9

Interface European Manufacturing BV reserves the right to change or modify specifications. Please see website for latest specifications. We have tried our very best to accurately represent product colours. However, due to the nature of printed materials, colour of actual products may vary slightly. Please request a sample to see actual product colour.

LVT Technical Specifications



Level Set Natural Woodgrains A00205 Storm



Carbon Neutral Floors™

Visit interface.com/hospitality

Europe, Middle East & Africa

AE	+971 44508175
AT	+43 1 8102839
BA	+387 33 522 534
BE	+32 2 475 27 27
BG	+359 2 808 303
BY	+375 17 226 75 14
CH	+41 44 913 68 00
CZ	+42 0 233 087 111
DE	+49 2151 3718 0
DK	+45 33 79 70 55
EE	+372 6518 313
ES	+34 932 418 750
EG	+(202) 3760 7818
FR	+33 1 58 10 20 20
GR	+30 211 2120820
HR	+385 14 62 30 63
HU	+36 1 349 6545
IE	+353 1 679 8466
IL	+972 97403034
IT	+39 02 890 93678
KZ	+7 701 391 88 13
LT	+370 37 337332
LV	+371 672 18 744
NL	+31 33 277 5555
ME	+381 11 414 92 00
MK	+389 2 323 01 89
NO	+47 23 12 01 70
PL	+48 22 862 48 40
PT	+351 217 122 740
RO	+40 21 317 12 40/42/43/44
RS	+381 11 414 92 00
SA	+966 554622263
SE	+468 241 230
SK	+421 911 104 073
SI	+386 8 205 4007
TR	+ 90 212 248 97 77
UA	+38(044)238 27 67
UK	+44 (0)800 3134465
ZA	+27 11 608 4270

