



# Request for Proposals (RfP)

## Consultancy Services supporting the development of the GEF-8 Full-sized Mesoamerica Forest IP child project for Honduras, “Conserving the Intact Forests of the Honduran Moskitia”

### Summary

IUCN seeks the services of a consultant or firm to lead the development of a full-sized GEF project, the **“Conserving the Intact Forests of the Honduran Moskitia” project** (hereafter the **Honduras Mesoamerica Forest child project**), including development and finalization of all reports and documentation including the finalized IUCN Project Document (ProDoc) and GEF CEO Endorsement Request with all required supporting annexes and documentation. The project is one of seven “child projects” that comprise the GEF-8 Mesoamerica Forest Integrated Program and that together seek to slow and reverse loss and degradation of critical remaining primary forest in the region.

The **Honduras Mesoamerica Forest child project**, described in more detail in the attached TORs will target three different sites of Honduras’ northeastern departments of Gracias a Dios, Olancho and Colon, namely the Rio Platano Biosphere Reserve (RPBR), Tawahka Asagni Biosphere Reserve (TABR) and indigenous forests of Warunta. Management of the Honduran Moskitia Intact Forest Landscape (IFL) —with 1,083,281 hectares covered by declared protected areas (RPBR and TABR) and an additional 65,370 hectares covered in forests outside protected areas (Warunta)—involves a complex panorama of stakeholders working at multiple levels and organizations. In this landscape, nine indigenous councils and federations representing the Miskitu, Tawahka, Pech and Garifuna peoples live on titled and untitled traditionally indigenous lands. These indigenous councils and federations share responsibility for natural resource and land management not only with eight municipalities across three departments, but also with Institute for Forest Conservation (ICF) which manages forests, protected areas and wildlife and with the Secretary for Natural Resources and the Environment (SERNA) which manages environment and natural resources (including forest carbon markets), amongst other national actors. Through the programmatic approach outlined in Mesoamerica PFD, the Project will engage in high-level and multisectoral dialogues, including those supporting regional policy coherence, finance mobilization, awareness raising, knowledge sharing and other linkages to ensure achievement of programmatic goals.

Interested Firms/Applicants are hereby invited to submit a technical and financial proposal for the aforementioned Consultancy Services. Please read the information and instructions carefully because non-compliance with the instructions may result in disqualification of your Proposal from this Procurement.

### 1. ABOUT IUCN

IUCN is a membership Union uniquely composed of both government and civil society organisations. It provides public, private and non-governmental organisations with the knowledge and tools that enable human progress, economic development and nature conservation to take place together.

Created in 1948, IUCN is now the world’s largest and most diverse environmental network, harnessing the knowledge, resources and reach of more than 1,400 Member organisations and some 18,000 experts. It is a leading provider of conservation data, assessments and analysis. Its broad membership enables IUCN to fill the role of incubator and trusted repository of best practices, tools and international standards.

IUCN provides a neutral space in which diverse stakeholders including governments, NGOs, scientists, businesses, local communities, indigenous peoples organisations and others can work together to forge and implement solutions to environmental challenges and achieve sustainable development.

Working with many partners and supporters, IUCN implements a large and diverse portfolio of conservation projects worldwide. Combining the latest science with the traditional knowledge of local communities, these projects work to reverse habitat loss, restore ecosystems and improve people’s well-being.

## 2. REQUIREMENTS

2.1. A detailed description of the services to be provided can be found in Annex 1 (Terms of Reference)

## 3. CONTACT DETAILS

3.1. During the course of this RfP, from its publication to the award of a contract, you may not contact or discuss this procurement with any IUCN employee or representative other than the following contact. You must address all correspondence and questions to the contact, including your proposal.

IUCN Contact: Procurement Officer E-mail: [procurement.Ormacc@iucn.org](mailto:procurement.Ormacc@iucn.org)

## 4. PROCUREMENT TIMETABLE

4.1. This timetable is indicative and may be changed by IUCN at any time. If IUCN decides that changes to any of the deadlines are necessary, that will be informed.

DATE	ACTIVITY
24/07/2023	Publication of the Request for Proposals
20/08/2023	Deadline for submission of questions
24/08/2023	Deadline for submission of proposals to IUCN (" <b>Submission Deadline</b> ")
29/08/2023	Clarification and evaluation of proposals
05/09/2023	Planned date for contract award
15/09/2023	Expected contract start date

4.2. Send an email to the IUCN contact to register an email address to receive notifications or clarifications of this bidding process, bidders in turn will be able to confirm if they intend to submit a Proposal before the deadline indicated above.

4.3. IUCN reserves the right to issue responses to any question to all Bidders, unless the Bidder making the inquiry expressly requests, at the time of inquiry, that it be kept confidential. If IUCN considers the content of the question and/or the answer to be non-confidential, it will inform the Bidder, who will have the opportunity to withdraw the question.

4.4. At any time before the deadline for submitting Proposals, IUCN may amend the RFP and will send all Bidders who have notified their interest or, failing that, registered an email to receive notifications, and it will be disclosed in the media used. For this end.

4.5. If the amendment is substantial, IUCN may extend the deadline for submission of Proposals in order to allow Bidders a reasonable time to take the amendment into consideration in their proposals.

## 5. PRESENTATION OF THE PROPOSALS

5.1. The Bidder interested in submitting a Proposal must submit the following documents, in the order listed, placing:

### A. ADMINISTRATIVE REQUIREMENTS

- a. Copy of identification document or passport (in case of being a foreigner)
- b. Copy of legal invoice for fees collection.
- c. Copy of resume
- d. Letter of interest signed, indicating that the Consultant have read, understood and accept the content of these Terms of Reference. (Annex 2)
- e. Signed Declaration of Undertaking (Annex 3a)
- f. Human Resources Questionnaire filled and signed (Annex 4)

**FOR CONSULTANCY COMPANIES:**

- a. Copy of Certification of Incorporation
- b. Copy of identification document of the Legal Representative
- c. Copy of legal invoice for fees collection.
- d. Copy of resumes of the Consulting Team
- e. Letter of interest signed, indicating that the Consultant have read, understood and accept the content of these Terms of Reference. (Annex 2)
- f. Signed Declaration of Undertaking signed by the Representative of the Consulting Company or, in the case of a Consortium or group of Consultants, signed by each member indicating that they have read and understood the content of the Declaration (Annex 3b)
- g. Human Resources Questionnaire filled and signed (Annex 4)

**B. TECHNICAL PROPOSAL:**

- i. The technical proposal must address each of the criteria listed below explicitly and separately, citing the reference number of the relevant criterion (Description column).

	<b>Description</b>	<b>Information to be presented</b>	<b>Relative importance (%)</b>
1	<i>Methodology to be implemented and schedule with logical dimension of time</i>		15%
2	<i>Experience in Honduras</i>	<i>Company Profile / CV / Responsible for the Consultancy</i>	10%
3	<i>Experience in GEF Project document elaboration</i>	<i>Company Profile / CV / Responsible for the Consultancy</i>	15%
4	<i>Experience in Environmental and Social safeguard and with gender-sensitive project design</i>		20%
5	<i>Experience with tools and assessments identified in ToR.</i>		30%
6	<i>Familiarity with project areas</i>		10%
<b>TOTAL</b>			<b>100%</b>

- i. IUCN will evaluate the technical proposals with respect to each of the criteria indicated in point i) and their relative importance.
- ii. Proposals in any other format will significantly increase the evaluation time and therefore such proposals may be rejected at the discretion of IUCN.

- iii. When resumes (CVs) are requested, these should be from the people who will perform the specified job. Persons submitted as part of the Proposal may only be replaced with the approval of IUCN.
- iv. In the event that a company or group of consultants applies, in addition to the above information, the following must be specified:
  - Responsible for consulting
  - Composition of the consulting team, specialty of each member.
  - Role and responsibility in the activities/products of each member in accordance with the TOR

**C. FINANCIAL PROPOSAL:**

**Signed by the Proposer, indicating the value of professional services (USD) in numbers and letters.**

- i. It will be considered that the prices presented include all the costs of fees, insurance, taxes, obligations and risks that must be considered for compliance with the Terms of Reference. IUCN will not accept charges beyond those clearly indicated in the Financial Proposal and that are eligible for the execution of the Contract.
- ii. The Bidder will have to assume the payments corresponding to taxes according to regulations in force in its country; You will have to have health and life insurance up to date; and will assume the bank charges by transfer.
- iii. If local or international trips must be made for the execution of this Contract, the costs will be paid by IUCN through reimbursement and will be governed by the IUCN per diem scale for food and lodging.
- iv. Travel expenses related to the execution of this Contract will not exceed the total amount of 10,000 USD broken down as follows:

<b>Expense type</b>	<b>Maximum amount</b>
Meals	6,000
Surface Transportation	3,000
Accomodation	6,000
Other expenses (detailed)	

- v. For reimbursement of travel expenses, the Proposer must submit a financial report with original invoices/receipts (e.g., transportation, lodging, food and incidentals) to the IUCN Contact Person, in the currency of the Contract, so that the corresponding reimbursement can be processed.
- vi. Expenses related to vehicle maintenance, purchase of electronic equipment, cell phone expenses, consumption expenses or purchase of alcoholic beverages will be considered ineligible expenses.

vii. Breakdown of the Financial Proposal.

For information purposes, it is recommended that the details of the financial proposal be broken down as follows:

	Description	Quantity	Unit price*	Total price*
1				
2				
3				

\*USD currency

5.2. Additional information not requested by IUCN should not be included in the proposal and will not be subject to evaluation.

## 6. SENDING

6.1. The Proposal must be submitted by email to the IUCN Contact (see Section 2). The subject heading of the email shall be [RfP Reference – Proposer name]. The Proposer name is the name of the company/organisation on whose behalf the proposal is being submitted, or the surname of the Proposer in case is bidding as a self-employed consultant. The proposal must be submitted in PDF format. The Proposer may submit multiple emails suitably annotated, e.g., Email 1 of 3, if attached files are too large to suit a single email transmission. You may not submit your Proposal by uploading it to a file-sharing tool (e.g. Dropbox, Google Drive, etc)

## 7. ELIGIBILITY

7.1. Not applicable

## 8. VALIDITY

8.1. The proposal must remain valid and capable of acceptance by IUCN for a period of 60 calendar days following the submission deadline.

## 9. WITHDRAWALS AND CHANGES

9.1. Proposers may freely withdraw or change their proposal at any time prior to the submission deadline by written notice to the IUCN Contact. However, in order to reduce the risk of fraud, no changes or withdrawals will be accepted after the submission deadline.

## 10. EVALUATION OF PROPOSALS

10.1. Completeness

IUCN will firstly check your proposal for completeness. Incomplete proposals will not be considered further.

10.2. Technical Evaluation

IUCN will evaluate technical proposals with regards to each of the following criteria and their relative importance:

### 10.2.1. *Scoring Method*

Proposals will be assigned a score from 0 to 10 for each of the technical evaluation criteria, such that '0' is low and '10' is high. Proposals that receive a score of '0' for any of the criteria will not be considered further.

### 10.2.2. *Technical Score*

The score for each technical evaluation criterion will be multiplied with the respective relative weight and these weighted scores added together to give the proposal's overall technical score.

### 10.3. Financial Evaluation and Financial Scores

The financial evaluation will be based upon the full total price submitted. Financial proposals will receive a score calculated by dividing the lowest financial proposal that has passed the minimum quality thresholds by the total price of your financial proposal.

**The proposals total score will be calculated as the weighted sum of the technical score and financial score.**

The relative weights will be:

**Technical: 70%**

**Financial: 30%**

Subject to the requirements in Sections 4 and 7, IUCN will award the contract to the Proposer whose proposal achieves the highest total score.

## 11. EXPLANATION OF PROCUREMENT PROCEDURE

11.1. IUCN is using the Invitation Procedure for this procurement. This means that only invited bidders may submit a proposal. IUCN typically invites from four to six bidders to submit a proposal.

11.2. You are welcome to ask questions or seek clarification regarding this procurement. Please email the IUCN Contact (see Section 2), taking note of the deadline for submission of questions in Section 3.1. Late proposals will not be considered. All proposals received by the submission deadline will be evaluated by a team of three or more evaluators in accordance with the evaluation criteria stated in in this RfP. No other criteria will be used to evaluate proposals. The contract will be awarded to the Proposer whose proposal received the highest Total Score. IUCN does, however, reserve the right to cancel the procurement and not award a contract at all.

11.3. IUCN will contact all Proposers who submitted their proposal to inform them of the outcome of the evaluation. The timeline in Section 3.1 gives an estimate of when the contract award is expected to be completed, however this date may change depending on how long the evaluation of the proposals takes.

## 12. CONDITIONS FOR PARTICIPATION IN THIS PROCUREMENT

12.1. To participate in this procurement, the Proposers are required to submit a proposal, which fully complies with the instructions in this RfP and the Attachments.

12.1.1. It is responsibility of each Proposer to ensure the submission of a complete and fully compliant proposal.

12.1.2. Any incomplete or incorrectly completed proposal submission may be deemed non-compliant, and as a result will not be consider to proceed further in the procurement process.

12.1.3. IUCN will query any obvious clerical errors in a proposal and may, at IUCN's sole discretion, allow a Proposer to correct these, but only if doing so could not be perceived as giving an unfair advantage.

12.2. In order to participate in this procurement, the Proposer must meet the following conditions:

- Free of conflicts of interest

- Registered on the relevant professional or trade register of the country in which is established (or resident, if self-employed)
  - In full compliance with its obligations relating to payment of social security contributions and of all applicable taxes
  - Not been convicted of failing to comply with environmental regulatory requirements or other legal requirements relating to sustainability and environmental protection
  - Not bankrupt or being wound up
  - Never been guilty of an offence concerning professional conduct
  - Not involved in fraud, corruption, a criminal organisation, money laundering, terrorism, or any other illegal activity.
- 12.3. Each Proposer shall submit only one proposal, either individually or as a partner in a joint venture. In case of joint venture, one company shall not be allowed to participate in two different joint ventures in the same procurement nor shall a company be allowed to submit a proposal both on its behalf and as part of a joint venture for the same procurement. A Proposer who submits or participates in more than one proposal (other than as a subcontractor or in cases of alternatives that have been permitted or requested) shall cause all the proposals with the Proposer's participation to be disqualified.
- 12.4. By taking part in this procurement, the Proposer accept the conditions set out in this RfP, including the following:
- It is unacceptable to give or offer any gift or consideration to an employee or other representative of IUCN as a reward or inducement in relation to the awarding of a contract. Such action will give IUCN the right to exclude you from this and any future procurements, and to terminate any contract that may have been signed with you.
  - Any attempt to obtain information from an employee or other representative of IUCN concerning another bidder will result in disqualification.
  - Any price fixing or collusion with other Proposers in relation to this procurement shall give IUCN the right to exclude you and any other involved bidder(s) from this and any future procurements and may constitute a criminal offence.

### **13. CONFIDENTIALITY AND DATA PROTECTION**

- 13.1. IUCN follows the European Union's General Data Protection Regulation (GDPR). The information a Proposer submits to IUCN as part of this procurement will be treated as confidential and shared only as required to evaluate the proposal in line with the procedure explained in this RfP, and for the maintenance of a clear audit trail. For audit purposes, IUCN is required to retain the proposals in its entirety for 10 years after the end of the resulting contract and make this available to internal and external auditors and donors as and when requested.
- 13.2. In the Declaration of Undertaking (Attachment 3) the Proposer needs to give IUCN express permission to use the information submitted in this way, including personal data that forms part of the proposal. Where a Proposer include personal data of employees (e.g. CVs) in the proposal, the Proposer needs to have written permission from those individuals to share this information with IUCN, and for IUCN to use this information as indicated in 8.1. Without these permissions, IUCN will not be able to consider the proposal.

### **14. COMPLAINTS PROCEDURE**

- 14.1. If a Proposer has a complaint or concern regarding the propriety of how a competitive process is or has been executed, then please contact [sofiamariela.madrigal@iucn.org](mailto:sofiamariela.madrigal@iucn.org). Such complaints or concerns will be treated as confidential and are not considered in breach of the above restrictions on communication (Section 2.1).

## **15. CONTRACT**

15.1. The contract will be based on IUCN's template which terms of which are not negotiable.

## **16. ANNEXES**

**Annex 1**      *Specification of Requirements / Terms of Reference*

**Annex 2**      *Letter of Interest*

**Annex 3**      *Declaration of Undertaking (select 2a for companies or 2b for self-employed)*

**Annex 4**      *Results Framework, Mesoamerica Forest IP*

**Annex 5**      *Honduras Child Project Concept*



**ATTACHMENT 1  
TERMS OF REFERENCE**

**The Regional Office for Mexico, Central America and the Caribbean of the  
International Union for the Conservation of Nature**

**(IUCN-ORMACC)**

**REQUIRES**

**PROFESSIONAL CONSULTANCY SERVICES**

**supporting the development of the  
GEF-8 Full-sized Mesoamerica Forest IP child project for Honduras, “Conserving the Intact  
Forests of the Honduran Moskitia”**

<b>Type of Contract:</b>	Professional Consultancy Services
<b>Period:</b>	7 months
<b>Availability:</b>	September 2023
<b>Persons Responsible for general Supervision:</b>	Tony Nello, Thematic expert; Josh Schneck, GEF GCF Portfolio Manager for Global Programs
<b>Persons responsible for national coordination and supervision:</b>	Malcolm Stufkens, Viceminister, SERNA Adalberto Padilla, IUCN Country office representative.

## **1. BACKGROUND AND JUSTIFICATION**

---

### **Overview**

Programming for the eighth funding cycle of the Global Environmental Facility (GEF-8)<sup>1</sup> includes resources and programming for a so-called *Amazon, Congo, and Critical Forest Biomes Integrated Program* that seeks “conservation of the last and globally important primary tropical forests”. This GEF Integrated Program (IP) is operationally divided into 5 separate regional IPs focused on the Amazon basin, Guinean forests, Indo-Malaya forests, Congo basin forests, and Mesoamerican forests.

IUCN has been selected to serve as the Lead GEF Agency for **the GEF-8 Mesoamerican Forest IP**. The program will be comprised of seven “child projects,” including national projects in Mexico, Guatemala, Honduras, Nicaragua and Panama, and a *Regional Coordination, Knowledge Sharing and Support Project* (hereafter called *the Regional child project*). These terms of reference describe the objectives, responsibilities and key deliverables for an International Consultancy supporting IUCN in developing the Honduras child project, “**Conserving the Intact Forests of the Honduran Moskitia**” (hereafter the Honduras Mesoamerica Forest child project) for approval by GEF and IUCN.

### **Background on Mesoamerican Forest IP**

Stretching from Central Mexico to the eastern Panamanian frontier, the forests of Mesoamerica are vital and irreplaceable. They are also among the world’s most threatened – nearly half of the region’s natural habitats have been converted to agriculture or urban areas, and out of the 5 remaining intact forests, 3 have lost nearly 25% of their area in just the past 15 years.

---

<sup>1</sup> [https://www.thegef.org/sites/default/files/documents/2022-04/GEF\\_R.08\\_29\\_Rev.01\\_GEF8\\_Programming\\_Directions.pdf](https://www.thegef.org/sites/default/files/documents/2022-04/GEF_R.08_29_Rev.01_GEF8_Programming_Directions.pdf)

The GEF-8 **Mesoamerican Forest IP** seeks to slow and reverse loss and degradation of critical remaining primary forests in the region. In Mesoamerica, principle proximate threats to primary forests are deforestation and degradation from agriculture expansion largely for cattle ranching, logging (both legal and illegal), and fire, along with infrastructure development and wildlife trafficking. To address these drivers the program will apply a strategy of supporting strengthening and enhancement of national and regional enabling conditions for primary forest conservation through coordinated interventions supporting strengthened capacities, governance, protection, mobilization of funding, exchange and awareness raising.

The **Honduras Mesoamerica Forest child project** will work in the indigenous territories of the Honduran Mosquitia, specifically, in the Río Plátano Biosphere Reserve<sup>2</sup>, the Tawahka Asangni Reserve and the indigenous forests of the Warunta area. These three sites are part of the functional habitat of four indigenous and black peoples, who have inhabited, live, use and occupy lands and natural resources in these areas, namely: Miskitu, Tawahka, Pech and Garífuna. In addition, there are non-indigenous settlers in the area who are mainly engaged in extensive cattle ranching activities.

This project plans to facilitate transformational change that supports the conservation of conserved forests in the Honduran Mosquitia through a set of targeted interventions that address the main drivers of deforestation and forest degradation. In line with the Program's Theory of Change, interventions will focus on strengthening multi-level governance and policy coherence, mobilizing new and additional financing for forest conservation, enhancing regional cooperation, knowledge sharing and awareness raising, and supporting conservation led by indigenous peoples and local communities. In line with the designed transformation envisaged for this Integrated Program (IP), the Project plans to address the systemic challenges outlined below:

1. it will use an integrated approach to achieve transformational change by combining four levers for systems transformation (i.e. governance and policy, financial leverage, innovation, and multi-stakeholder dialogues) that will help catalyze actions and partnerships to remove drivers of degradation and secure flows of ecosystem services with global environmental benefits.
2. In line with the IP, the project vision is "conservation of primary forest in La Mosquitia in Honduras at three sites (Rio Platano, Tawahka, Warunta) through strengthened governance and protection, ensuring the flow of ecosystem services for indigenous and non-indigenous peoples and the planet"

Specific outcomes and services of the Honduras Forest IP project include:

- **C1. Strengthen conditions conducive to the protection, conservation and restoration of primary forests:** The Project will facilitate advances in the adoption, integration and harmonization of policies and regulatory frameworks favorable to forest conservation and indigenous peoples' rights. This will provide innovative governance additionality by strengthening the existing multi-level indigenous governance framework of nine indigenous territories to prepare and implement indigenous territorial regulations, developing indigenous leadership, technical and administrative capacities at landscape, territorial and community levels. These indigenous territorial regulations will be aligned with relevant national and municipal laws, policies and government regulations and will be supported by multi-sectoral and inter-sectoral management committees and co-management mechanisms in protected areas. This component will also provide legal and regulatory additionality by supporting the participatory preparation and implementation of indigenous regulations, led by the indigenous territorial councils and federations, that regulate access, use, protection, control and exclusion of land and natural resources in the nine indigenous territories.

- **C2. Acceleration of primary forest protection and restoration.** Building on the progress made under Component 1, indigenous governance entities will work together with governmental and non-governmental organizations to significantly increase the effective institutional presence on the ground of organizations providing policy and value chain support and law enforcement, ultimately seeking to halt the advance of the agricultural and livestock frontier and reduce other illegal activities that destabilize the landscape. This will result in environmental additionality with global benefits in: terrestrial protected areas under improved management, restored lands, landscapes under improved practices, and mitigated greenhouse gas emissions.

- **C3. Increased investment in forest/natural landscapes and positive livelihoods.** Long-term implementation of the strategies proposed in components 1 and 2 requires sustainable financing to close the

---

<sup>2</sup> Since 1982, recognized by UNESCO as a World Natural Heritage site.

gap between financial needs and existing flows of funding for IFL protection and governance. In line with global biodiversity and climate change agreements, the project provides financial additionality by identifying and scaling up a range of financial and policy mechanisms including: reform of harmful incentives (including reduction or elimination of environmentally harmful subsidies); biodiversity offsets; national budgets and fiscal policies; green financial products; carbon markets; official development assistance (ODA); sustainable supply chains; and philanthropy.

- **C4. Promoting knowledge management, cooperation and coordination.** By promoting inter-institutional knowledge management, cooperation and coordination with indigenous peoples at sub-national, national and bi-national (with Nicaragua) levels, the Project will contribute to the additionality of innovation in relation to synergies and complementarity of capacities and experiences of non-state and state actors. Special attention will be given to knowledge sharing and coordination with the project in Nicaragua on issues such as indigenous governance and reduction of deforestation drivers, thus fostering transboundary cooperation.

## Duties and Responsibilities

The selected International Consultancy firm or individual will support IUCN in developing the GEF-8 Honduras Mesoamerica Forest IP **Project CEO Endorsement Request**. Specific duties and responsibilities include the following:

1. Under the direction of the IUCN GEF/GCF Portfolio Manager for Global Programs and senior staff in IUCN regional and country offices in Mesoamerica, **lead in coordinating a consultative CEO Endorsement Request development process** with all relevant public agencies and local governments, GEF Secretariat, and key external partners including those from the private sector, civil society, and academia.
2. **Assessments and engagement work to identify highest-value opportunities** for improved protected areas management, community-led conservation, businesses and value chain investment in deforestation-free ventures, enabling policy and regulatory enhancement, and financing mechanisms to mobilize new and additional finance for forest conservation as part of the Project's supported interventions.
3. **Lead the organization and implementation of the Honduras Forest IP Project Development Inception Workshop**, with participation of country representatives, GEF Secretariat, GEF Agency, potential partners, and potential executing partners, to support design of the Project and ensure full support and ownership from project stakeholders.
4. **Lead the drafting of the Honduras Forest IP Project CEO Endorsement Request, IUCN Project Document, and all required annexes**, in accordance with the transformative vision defined by GEF-8 programming and IUCN, and with inputs from participating country representatives in close coordination with the NDA, participating GEF Agencies, and other stakeholders. The CEO Endorsement Request shall meet all requirements for approval by the GEF Secretariat, GEF Science and Technical Advisory Panel (STAP), and GEF Council, and be informed by the best and latest science and best practices on conservation and sustainable management of forests, and tailored to the context and drivers of degradation specific to Honduras and the selected landscapes.
5. **Lead the organization and implementation of a Honduras Forest IP Project Validation Workshop**, with participation of relevant public agencies and local governments, GEF Secretariat, and potential executing partners, for participants to validate the design of the fully developed Project document and annexes.
6. **Revise draft CEO Endorsement Request, IUCN Project document, and all Annexes** to respond to all GEF Secretariat, GEF STAP, and Country comments sufficient to achieve GEF approval of the CEO Endorsement Request.

## 2. OBJECTIVES OF THE CONSULTANCY

---

### 2.1. General:

Support IUCN in developing the GEF-8 Honduras Mesoamerica Forest IP Project CEO Endorsement Request, Project document, and all required annexes.

### 2.2. Specific:

1. Lead in coordinating a consultative CEO Endorsement Request development process and the organization and implementation of a *Project Development Inception Workshop*
2. Develop assessments including ecological and socio-economic studies, required to identify highest-value opportunities and inform on activities and priority sites for intervention.
3. Carry out relevant assessments and consultations for identifying and assessing safeguard risks and prepare respective reports and tools to manage the identified safeguard risks.
4. Drafting of the Honduras Forest IP CEO Endorsement Request, IUCN Project Document (using IUCN template), and all required Annexes.
5. Lead the organization and implementation of Honduras Forest IP *Project Validation Workshop* and provide a Revised draft CEO Endorsement Request and project document, and all required Annexes.

### 3. EXPECTED DELIVERABLES

**Key deliverables to be developed by the International Consultancy and provided to IUCN: (All documents should be written in English and Spanish for presentation to the GEF and internal discussion in the country, respectively. In addition, they should be prepared in the formats, guidelines and tools established by the GEF and IUCN.)**

No.	Deliverable	Description
1	Program Development Inception Workshop Terms of Reference (TORs) and summary report.	ToR of the inception workshop must include a detailed agenda, potential list of organizations/speakers involved, logistic needs and allow the dissemination of key information and orientation guidelines to the country and project stakeholder for the design of the project as well as gathering input from the stakeholders involved in target landscapes. A summary report should capture participants, events and findings obtained from the inception workshop. In addition, this product will incorporate Terms of reference for workshops to be held in the target landscape. This product will include an initial communication plan for the Project design, including materials such as brochures and ppt presentations.
2	Engagement work and assessments to identify and develop high value and priority interventions under <b>Component 1</b> , Adoption of Enabling Policies, Reforms and Planning, <b>Component 2</b> , Accelerated protection and restoration of the RTBF forest, <b>Component 3</b> , Scaled up Investment in Forest-Positive Landscapes and <b>Component 4</b> , Enhanced Regional Cooperation and Coordination.	<p>Deliverables per component must include:</p> <p><b>Component 1</b></p> <ol style="list-style-type: none"> <li>1. Identification of minimum five national/subnational policies and regulations important for primary forest conservation and protection and where opportunities for strengthening through project-supported interventions exist, in line with regional policy framework (e.g. AFOLU 2040 strategy)</li> <li>2. Design of an effective policy-influencing plan together with country partners considering synergies with dialogues to be supported at regional level.</li> <li>3. Analysis of strengths and weaknesses of local or national governance structures to be strengthened /created through the Project intervention.</li> <li>4. Plan for design and establishment/strengthening of a national multi-sectoral platform for the coordination of primary forest conservation.</li> </ol> <p><b>Component 2</b></p> <ol style="list-style-type: none"> <li>5. Analysis of the management effectiveness of PAs using the GEF Management Effectiveness Tracking Tool, identification of priority PAs to be supported by the project intervention, and a plan for strengthening PAs.</li> <li>6. Identification of the baseline and potential sites for intervention for land restoration and improved landscape management (including through OECMs)</li> </ol>

		<p>based on a prioritization of the deforested/degraded forest landscape. Assessment will include a plan detailing investment and needs for restoration and improved landscape management considering the highest priority sites as agreed with project partners.</p> <p>7. Design of high-value capacity building interventions for community-led conservation initiatives including OECMs to address priority needs.</p> <p><b>Component 3:</b></p> <p>8. An assessment of investment opportunities and needs for deforestation free, Nature-positive value chains in the Project landscapes, including a list of possible ventures, businesses or community initiatives that could be strengthened to attract financing for forest conservation, detailing if there is a business plan, amounts and type of financial resources required and possible to leverage.</p> <p>9. An effective finance mobilization strategy to provide new/additional funding for forest conservation including potential use of innovative finance instruments such as PES, Green Bonds, Biodiversity Credits, and more at national level, in synergy with the regional finance mobilization strategy.</p> <p><b>Component 4:</b></p> <p>10. A report on the role of women, indigenous people and local communities in forest conservation and identification of key project activities to be co-implemented with women and/or indigenous or local community through their relevant social organizations to promote inclusive governance in PAs and OECMs and enhance their access to funding.</p> <p>11. Design of an effective knowledge capture and dissemination strategy, including collaboration with the Program and key external partners and initiatives.</p> <p>12. Design of an effective Project monitoring system, building on existing platforms and tools</p> <p><b>Input for the ESMS Screening decision:</b>  A report on the socio-economic and -cultural context at landscape level and, most importantly, relevant features of the (potential) intervention sites: legal framework for land tenure and actual ownership and rights situation in each site, identification of main ethnic and social groups present in the sites (incl indigenous peoples and marginalized or vulnerable groups) and analysing their main features (language, livelihood, dependency on nature, territory, culture and spiritual traditions, social organization and customary institutions); gender-disaggregation of the above themes highlighting differences in roles, practices and knowledge, on rights and power (including influence on decision making) as well as access to and control over resources; security situation (organized crime) and framework for environmental law enforcement and actors involved;</p>
3	Relevant assessments and consultations for identifying and assessing safeguard risks and prepare respective reports and tools to manage the identified safeguard risks	Deliverables must include: <ol style="list-style-type: none"> <li>Component 1: Strategic Environmental and Social assessment (SESA) report on social and environmental risks potentially triggered by a strengthening of national/ subnational policies and</li> </ol>

		<p>regulations important for primary forest conservation and protection;</p> <ol style="list-style-type: none"> <li>2. Component 2: <ol style="list-style-type: none"> <li>a. Environmental and Social Impact Assessment (ESIA) Report carried out in the sites supported under component 2.</li> <li>b. Environment and Social Management Plan (ESMP) and any other relevant safeguard tools (e.g., Indigenous People Plan, Process Framework etc.), as appropriate and as instructed by ESMS Screening.</li> </ol> </li> <li>3. Component 3: procedures to guide the screening of the business and value chain investments to be identified during project implementation on environmental and social risks (before being selected and validated by the project)</li> <li>4. Project-level Grievance mechanism</li> <li>5. Indigenous Peoples consultation report documenting high-level agreement with the project.</li> </ol>
4	<p>Draft Mesoamerican Forest IP CEO Endorsement Request and IUCN Project Document and all required annexes and ToR for validation workshop</p>	<p>The draft GEF CEO Request, prepared using the GEF8 template, must include all required annexes and sections including a stakeholder engagement plan, gender analysis and Action Plan, private sector engagement plan, Environment Social Management Assessment and Questionnaire as input to IUCN's ESMS Report, Project Result Framework and Project Budget table.</p> <p>This product also includes ToR for the validation workshop and a Project Document (using IUCN template), the evaluation of the suitability of potential executing partners, and of co-financing opportunities according to the GEF leverage requirement (1:7) to be delivered in a separate document. The CEO endorsement request should be generated in Spanish and English to facilitate the feedback process in Honduras and with the GEF. An annex will be included for the calculation of emission reduction potential using EX ACT, according to GEF guidelines.</p>
5	<p>Revised draft CEO Endorsement Request with all required annexes sufficient for approval by GEF and updated IUCN Project Document.</p>	<p>The revised draft CEO Endorsement Request shall respond to all GEF Secretariat, GEF STAP, Agency partner, and Country (e.g. SERNA, ICF, Indigenous People organizations) comments sufficient to achieve GEF approval of the CEO Endorsement Request. In addition, this product shall include a summary of feedback received from the validation workshop and updated project document (using IUCN template). The final endorsement request should be generated in Spanish and English to facilitate the socialization process in Honduras and consideration by the GEF. In addition, this product will include input on the need for activities to be supported at the regional level, including: high-level events and communication, development of a project preparation service, regional web platform for regional knowledge sharing, need for a toolbox and associated services offered at the regional level. In addition, the following documents must be submitted as powerpoint presentations: i) ProDoc; ii) Management Effectiveness Evaluation; iii) Gender Analysis and Action Plan; iii) Analysis and plan for the participation and development of indigenous peoples. In addition, the original document that explains the agreement and/or preliminary consent of the indigenous organizations for the execution of the project must</p>

		be submitted, including minutes and lists of participants of each meeting and workshop held.
--	--	--

#### 4. INTELLECTUAL PROPERTY

All Intellectual Property rights conceived or made by the Consultant / Consulting Firm in the course of providing the Services will belong to IUCN.

#### 5. SCHEDULING AND TIMETABLE FOR DELIVERING PRODUCTS

##### 5.1. Activities and programming

Specific objectives	Activities	Month						
		1	2	3	4	5	6	7
1. Lead in coordinating a consultative CEO Endorsement Request development process and the organization and implementation of a regional <i>Program Development Inception Workshop</i>	<ul style="list-style-type: none"> <li>• Conduct an introductory meeting with IUCN and SERNA staff.</li> <li>• Document review including the approved Mesoamerica Forest IP PFD and the child project concept note, associated documents, e.g., STAP and GEF Secretariat and GEF Council review comments, IUCN GEF Policy and guidance documents, GEF-8 Programming Directions, etc.</li> <li>• Review challenges and lessons learnt related to Mesoamerica Critical Forest Biome conservation.</li> <li>• Prepare preliminary project risk analysis identification based on field studies.</li> <li>• Conduct a stakeholder analysis at the national, departmental, municipal, territorial and site levels, with the participation of relevant government agencies related to the protection of natural resources and protected areas, local communities, civil society organizations, the private sector, and plan engagement of stakeholders for designing the project.</li> <li>• Draft ToR of the Program Development Inception Workshop including detailed agenda, potential list of organizations/ speakers involved, logistic needs.</li> <li>• Draft logical framework with expected disaggregated gender indicators, the theory of change and the baseline for the GEF Core indicators of the project (ref. IUCN Gender equality and women's empowerment policy);</li> <li>• Prepare the communication plan for the launch and development of the Project Document, including required materials such as brochures, PowerPoint presentations.</li> <li>• Address feedback received from IUCN and SERNA on ToR.</li> <li>• Lead the implementation of the Program Development Inception Workshop.</li> <li>• Write inception workshop report.</li> </ul>							



<p>2. Develop assessments required to identify highest-value opportunities and inform on activities and priority sites for intervention.</p>	<ul style="list-style-type: none"> <li>• As part of the studies listed below, interviews, consultations, workshops when necessary, and field tours should be conducted to gather perspectives from multiple stakeholders (national, sub-national, private, civil society as defined by the stakeholder analysis) on the activities to be implemented as part of the Project. Consultant will need to review and as needed, contribute to the spatial analysis and assessment of threats to the tropical and subtropical lowland rainforests carried out by IUCN in parallel of this work.</li> <li>• Baseline study on improved protected areas management should include a review and comparison of management plans and effectiveness evaluations of all Protected Areas present in project areas of interest<sup>3</sup>, interview of PA managers in order to set the baseline for selected PA using GEF Management Effectiveness Tracking Tool<sup>4</sup>.</li> <li>• Based on ongoing restoration and conservation initiatives, including Payment for Environmental Services programs, national restoration, and forest monitoring information, identify</li> <li>• community-led forest conservation initiatives with potential for recognition as Other Effective Conservation Measures and describe potential strategies and activities to strengthen management effectiveness of selected initiatives.</li> <li>• Baseline and priority sites for land restoration (GEF Core Indicator 3)</li> <li>• Baseline and priority sites for landscapes under improved practices (GEF CI 4)  <p style="margin-left: 40px;">For the three indicators mentioned above, priority sites shall be selected considering areas with the highest potential for restoration or improved management and validated based on consultation with local stakeholders and the partner country.</p> </li> <li>• Develop a portfolio of potential businesses and value chain investments in deforestation-free ventures for the Project by screening and exchanging with companies and other relevant organizations from multiple sectors such as agricultural, forestry, tourism, protected areas to identify financing needs, potential business plans and/or opportunities, considering local development plans. Listing of potential investments shall include corresponding multi-stakeholder engagement, potential for public-private</li> </ul>							
--	---	--	--	--	--	--	--	--

<sup>3</sup> Río Platano and Tawahka Asagni.

<sup>4</sup> <https://www.thegef.org/documents/gef-7-and-gef-8-biodiversity-protected-area-tracking-tool>

	<p>partnerships, size and type of funding required<sup>5</sup> (equity, credit, grant...etc), type of support required from GEF-8.</p> <ul style="list-style-type: none"> <li>• Develop an analysis of the role of women, indigenous people and local communities in CFB conservation and identify key activities of GEF-8 Honduras Forest IP with potential to be co-implemented with women and/or local community through community, smallholder or women-led organizations as well promote inclusive governance in PA / OECMs and enhance their access to funding . When applicable, assess local organizations capacities to receive and manage funds from the Project based on their financial and administrative capacities. The Analysis and Participation Plan for Indigenous Peoples shall be carried out in consultation with the directors and community members of the nine Indigenous Territorial Councils and the Union of Indigenous and Black Peoples of Honduras.</li> <li>• Policy and regulatory instruments: through desk-review of legal and policy frameworks and consultation of key political institutions, including ministries of environment, agriculture and finance, and subnational governments, elaborate on potential policy instruments, including land-use plans, to be developed or enhanced as part of GEF-8 Forest IP. This analysis shall take into consideration regional policies to be supported by the program (see output 1.1.4 and 1.2.3 in annex 5)</li> <li>• Design an effective policy influencing plan, considering efforts to be deployed at regional level (see output 1.3.2. in annex 5)</li> <li>• Considering existing and potential/emerging financing mechanisms for forest conservation at national level, design interventions (e.g., private sector roundtables, social-impact investing, deployment of innovative finance, etc.) to mobilize new and additional funding for forest conservation at scale, mapping potential partners and their role as part of an effective finance mobilization strategy. These mechanisms should respond to the needs of different stakeholders, including local communities/ indigenous groups, Protected Area management agencies, OECMs and identify synergies with regional efforts to mobilize finance (see output 3.1.4. and 3.2.4 in annex 5).</li> <li>• Additional studies shall inform the activities and resources needed for the establishment or strengthening of national multisectoral platforms and strengthening local and national governance structures to improve the effectiveness of primary forests protection and conservation.</li> </ul>							
--	--	--	--	--	--	--	--	--

<sup>5</sup> Funding size per investment may range from 200,000 USD to 20,000,000 USD.

	<ul style="list-style-type: none"> <li>Carry out review of literature and legal framework and conduct field visits to analyse the socio-economic and -cultural context at landscape level and, most importantly, relevant features of the (potential) intervention sites.</li> </ul>							
<p>3. Carry out relevant assessments and consultations for identifying and assessing safeguard risks and prepare respective reports and tools to manage the identified safeguard risks</p>	<ul style="list-style-type: none"> <li>Undertake a Strategic Environmental and Social assessment (SESA) to identify social and environmental risks potentially triggered strengthening national/ subnational policies and regulations on primary forest conservation and protection (component 1);</li> <li>Carry out an Environmental and Social Impact Assessment (ESIA) in the sites supported under component 2.</li> <li>Develop mitigation measures together with relevant stakeholders, in particular project affected peoples/ indigenous communities, and consolidate them in form of safeguard tools (ESMP, Indigenous People Plan, Process Framework etc.) as appropriate and as instructed by ESMS Screening.</li> <li>Develop procedures to guide the screening of the business and value chain investments to be identified during project implementation on environmental and social risks (component 3)</li> <li>Develop a project-level Grievance Mechanism</li> </ul>							
<p>4. Draft Mesoamerican Forest IP CEO Endorsement Request, Project Document and ToR for validation workshop</p>	<ul style="list-style-type: none"> <li>Based on stakeholder mapping and consultation, identify and assess capacities of implementing partners and other partners in the field using the IUCN Implementing Partner Suitability Assessment Format.</li> <li>Develop linkages and implementation arrangements with host government partners, executing partners and other potential partners on-the-ground.</li> <li>Review the current system for training/capacity building of framework adopted by protected areas system, Protected areas located in the area of intervention, forest management governing bodies and other relevant organizations.</li> <li>Update and further deepen stakeholder analysis at national, provincial, territorial and site level, including natural resource-based value chains, insurance and microfinance actors;</li> <li>Evaluate in detail the baseline scenario through research, literature review, experts and stakeholders' consultations, related activities and initiatives, including co-financing options;</li> <li>Carry out a detailed gap analysis to justify the GEF incremental cost reasoning;</li> <li>Refine the theory of change and logical framework based on the above;</li> <li>Based on stakeholder analysis and consultations carried out throughout the design phase, develop the stakeholder engagement plan (SEP)</li> </ul>							

	<p>establishing how to continue to engage stakeholders during the implementation phase</p> <ul style="list-style-type: none"> <li>• Design a detailed log frame and accompanying narrative proposal on the project components;</li> <li>• Develop the overall project budget and work plan, including a procurement plan;</li> <li>• Undertake a detailed project risk analysis and mitigation measures;</li> <li>• Draft CEO Endorsement Request, including gender analysis and action plan, private sector engagement plan, Project Result Framework and Project Budget table.</li> <li>• Design and develop indicators mapped to GEF core indicators taking into account gender responsiveness, establish baselines for the indicators and develop Monitoring &amp; valuation plan</li> <li>• Address IUCN comments to draft CEO Request prior to submission in GEF portal.</li> </ul>							
<p>5. Lead the organization and implementation of a regional <i>CEO Endorsement Request Regional Child project Validation Workshop</i> and provide a Revised draft CEO Endorsement Request and project document.</p>	<ul style="list-style-type: none"> <li>• Lead the validation workshop organized in coordination with IUCN and all participating partners and relevant organizations.</li> <li>• Address all GEF Secretariat, GEF STAP, IUCN and Country comments sufficient to achieve GEF approval of the CEO Endorsement Request.</li> <li>• In addition, this product shall include a summary of feedback received from the validation workshop and list of participants</li> <li>• Provide input for activities to be supported at regional level including: High-level events and communication, development of a project preparation facility, regional web platform for regional knowledge exchange, need for a toolbox and associated services offered at regional level.</li> </ul>							

## 5.2. Timetable for delivery of products:

Products	Expected date of delivery	Percentage of pay
1. Program Development Inception Workshop Terms of Reference (TORs) and summary of findings.	Eight (8) weeks after the signing of the contract by both parties	20%
2. Engagement work and assessments to identify and develop high value and priority interventions under Component 1, Adoption of Enabling Policies, Reforms and Planning, Component 2, Accelerated protection and restoration of the RTBF forest, Component 3, Scaled up Investment in Forest-Positive Landscapes and Component 4, Enhanced Regional Cooperation and Coordination	Eighteen (16) weeks after the signing of the contract by both parties	30%
3. Relevant assessments and consultations for identifying and assessing safeguard risks and prepare respective reports and tools to manage the identified safeguard risks	Twenty (20) weeks after the signing of the contract by both parties	10%
4. Draft Mesoamerican Forest IP CEO Endorsement Request and ToR for validation workshop	Twenty (20) weeks after the signing of the contract by both parties	15%
5. Revised draft CEO Endorsement Request with all required annexes sufficient for approval by GEF	Twenty-eight (28) weeks after the signing of the contract by both parties	25%

- All products will be paid once delivered to IUCN's complete satisfaction.

-Disbursements will depend on the availability of funds from the donor.

-The consultant / consulting firm must consider in the technical proposal the modification of some deliverables during the execution of the contract, if it is necessary, to adapt some results, without affecting the amount of the original contract.

### 1. TECHNICAL PROFILE

For the development of this consultancy, a team should be proposed that meets the following profile requirements:

1. Experience in developing GEF or other international funds' ProDocs and related project documents, along with a good grasp on GEF guidelines and standards to be met for these

2. Experience and expertise in project design and implementation, including monitoring and evaluation, including gender-responsive project design
3. Sustainable financing expertise with specific experience relevant to financing of protected area networks and natural resource-based value chains
4. Local expertise with extensive knowledge on national conservation efforts, policies and strategies and the ability to position project activities in the local context effectively
5. Knowledge of private sector and community-based approaches to natural resource management in Honduras
6. Knowledge of environmental issues and complexities as they relate to Honduras
7. Expertise in gender analysis and integrating gender empowerment aspects of gender in forest restoration and conservation.
8. Experience in dialogue and work with indigenous people and local communities, including obtaining FPIC.
9. Knowledge of social and livelihood systems in Honduras
10. Experience in value chain development and identification of business investment opportunities at local level
11. Understanding of the natural resources management and land use policy environment and the system to administer land rights (statutory and customary) as well as conditions and challenges specific to the selected landscape.
12. Expertise in Environmental and Social Impact Assessment and development of Environmental and Social Management Plans (ESMP) and other safeguard tools
13. Experience in financial Management, including procurement related expertise
14. Experience in structuring large forest conservation projects and also protected area network management projects and initiatives, including preferably, those financed by the GEF
15. Experience in conducting community and stakeholder consultations
16. Fluency in English, and Spanish language is necessary (in particular of the lead consultant)
17. Academic background required by the different members of the team: Forest engineer, agronomist, land-use policy experts, economist, GIS expert, biologist, anthropologist/sociologist or related careers.

It is reiterated that the selected international consulting firm must have personnel based in Honduras; it is considered a competitive advantage that the composition of the work team should include not only international experts, but also Honduran professionals with technical expertise and, if possible, with knowledge of the territorial dynamics of the Honduran Muskitia.

## **2. PERIOD AND COORDINATION**

---

The period of the consultancy will be **7** months.

**Form of work (with Unit/Project):** in order to achieve the products, all activities will be closely coordinated under the direction of the IUCN GEF/GCF Portfolio Manager for Global Programs and senior staff in IUCN regional and country office in Honduras and maintain close communication with SERNA authorities and strategic partners.

## ANNEX 2: LETTER OF INTEREST

Fill in the information in blue

[Place and date]

TO: [IUCN]

The undersigned, [name of the professional], after having examined the Terms of Reference for the Contracting of the Professional Consulting Services for (name of the consultancy) and offers to perform these services in accordance with the call for date \_\_\_\_\_.

The attached Financial Proposal is for the total sum of [amount in letters and figures], which includes all taxes required by law.

The period of time in which the signatory of this document agrees to provide the services is from the date of signing the contract, until the date of termination thereof, without price variation, unless modifications are made resulting from contract negotiations.

The undersigned declares that all the information and statements made in the submitted proposals are true and that any misinterpretation contained in them may lead to disqualification.

Cordially,

Signature \_\_\_\_\_

Full name of the proposer or legal representative \_\_\_\_\_

## ATTACHMENT 3a – SELF-EMPLOYED PROPOSER

### DECLARATION in relation to RfP < Consultancy Service >

I, the undersigned, hereby confirm that I am self-employed and able to provide the service independent of any organisation or other legal entity.

Full name (as in passport):

Home or Office (please delete as appropriate) Address (incl. country):

I hereby authorise IUCN to store and use the information included in the attached Proposal for the purpose of evaluating Proposals and selecting the Proposal IUCN deems the most favourable. I acknowledge that IUCN is required to retain my Proposal in its entirety for 10 years after then end of the resulting contract and make this available to internal and external auditors and donors as and when requested.

I further confirm that the following statements are correct:

1. I am legally registered as self-employed in accordance with all applicable laws.
2. I am fully compliant with all my tax and social security obligations.
3. I am free of any real or perceived conflicts of interest with regards to IUCN and its Mission.
4. I agree to declare to IUCN any real or perceived emerging conflicts of interests I may have concerning IUCN. I acknowledge that IUCN may terminate any contracts with me that would, in IUCN sole discretion, be negatively affected by such conflicts of interests.
5. I have never been convicted of grave professional misconduct or any other offence concerning my professional conduct.
6. I have never been convicted of fraud, corruption, money laundering, supporting terrorism or involvement in a criminal organisation.
7. I acknowledge that engagement in fraud, corruption, money laundering, supporting terrorism or involvement in a criminal organisation will entitle IUCN to terminate any and all contracts with me with immediate effect.
8. I am not included in the UN Security Council Sanctions List, EU Sanctions Map, US Office of Foreign Assets Control Sanctions List, or the World Bank listing of ineligible firms and individuals. I agree that I will not provide direct or indirect support to firms and individuals included in these lists.
9. I have not been, am not, and will not be involved or implicated in any violations of Indigenous Peoples' rights, or injustice or abuse of human rights related to other groups or individuals, including forced evictions, violation of fundamental rights of workers as defined by the International Labour Organization's (ILO) Declaration on the Fundamental Principles and Rights at Work, child labour, sexual exploitation, sexual abuse, or sexual harassment.

---

<Date and Signature>



## ATTACHMENT 3b - For Consulting Companies

### DECLARATION in relation to RfP <name of the Consultancy Service>

I, the undersigned, hereby confirm that I am an authorised representative of the following organisation:

Registered Name of Organisation (the "Organisation"): \_\_\_\_\_

Registered Address (incl. country): \_\_\_\_\_

Year of Registration: \_\_\_\_\_

I hereby authorise IUCN to store and use the information included in the attached Proposal for the purpose of evaluating Proposals and selecting the Proposal IUCN deems the most favourable. I acknowledge that IUCN is required to retain the Proposal in its entirety for 10 years after then end of the resulting contract and make this available to internal and external auditors and donors as and when requested.

Where the Proposal includes Personal Data as defined by the European Union's General Data Protection Regulation (GDPR), I confirm that the Organisation has been authorised by each Data Subject to share this Data with IUCN for the purposes stated above.

I further confirm that the following statements are correct:

1. The Organisation is duly registered in accordance with all applicable laws.
2. The Organisation is fully compliant with all its tax and social security obligations.
3. The Organisation and its staff and representatives are free of any real or perceived conflicts of interest with regards to IUCN and its Mission.
4. The Organisation agrees to declare to IUCN any real or perceived emerging conflicts of interests it or any of its staff and representatives may have concerning IUCN. The Organisation acknowledges that IUCN may terminate any contracts with the Organisation that would, in IUCN sole discretion, be negatively affected by such conflicts of interests.
5. None of the Organisation's staff has ever been convicted of grave professional misconduct or any other offence concerning their professional conduct.
6. Neither the Organisation nor any of its staff and representatives have ever been convicted of fraud, corruption, money laundering, supporting terrorism or involvement in a criminal organisation.
7. The Organisation acknowledges that engagement by itself or any of its staff in fraud, corruption, money laundering, supporting terrorism or involvement in a criminal organisation will entitle IUCN to terminate any and all contracts with the Organisation with immediate effect.
8. The Organisation is a going concern and is not bankrupt or being wound up, is not having its affairs administered by the courts, has not suspended business activities, is not the subject of proceedings concerning those matters, or in any analogous situation arising from a similar procedure provided for in national legislation or regulations.
9. The Organisation complies with all applicable environmental regulatory requirements or other legal requirements relating to sustainability and environmental protection.
10. The Organisation is not included in the UN Security Council Sanctions List, EU Sanctions Map, US Office of Foreign Assets Control Sanctions List, or the World Bank listing of ineligible firms and individuals. The Organisation agrees that it will not provide direct or indirect support to firms and individuals included in these lists.
11. The Organisation has not been, is not, and will not be involved or implicated in any violations of Indigenous Peoples' rights, or injustice or abuse of human rights related to other groups or individuals, including forced evictions, violation of fundamental rights of workers as defined by the International Labour Organization's (ILO) Declaration on the Fundamental Principles and Rights at Work, child labour, sexual exploitation, sexual abuse, or sexual harassment.

\_\_\_\_\_  
<Date and Signature of authorised representative of the Proposer>

< Name and position of authorised representative of the Proposer >

#### Annex 4:

#### Proposed Results Framework for the Mesoamerica Forest Regional IP in the Program Framework Document:

Outcomes	Outputs
<b>Component 1. Enabling conditions for the protection and conservation of primary forests.</b>	
<b>Outcome 1.1.</b> Strengthened local, national, and regional governance mechanisms in support of primary forests conservation.	<p>1.1.1. Awareness-raising and advocacy plan on primary forest protection and conservation targeted at policymakers, sectoral entities, and private sector.</p> <p>1.1.2. Local and national governance structures strengthened to improve the effectiveness of primary forests protection and conservation.</p> <p>1.1.3. Strengthened agreements for cross-border protected areas collaboration.</p> <p>1.1.4. A regional agreement to operationalize the Rural youth strategy of the SICA region 2022 – 2030 into the primary forest landscapes.</p>
<b>Outcome 1.2.</b> Key national and regional policy and regulatory instruments prioritize primary forest conservation.	<p>1.2.1. National and subnational Intersectoral updated policies, regulations and instruments that support primary forest protection and conservation.</p> <p>1.2.2. Information to support fact-based decision making on forest conservation interventions.</p> <p>1.2.3. Three key regional instruments integrate strategic actions for primary forest protection and conservation (PERFOR, ERAM and ERAS).</p>
<b>Outcome 1.3.</b> Improved multisectoral platforms for forest conservation and management.	<p>1.3.1. National multisectoral platforms established or strengthened.</p> <p>1.3.2. Regional multisectoral meetings of stakeholder groups and sectors to agree actions and goals for primary forest conservation.</p> <p>1.3.3. Affirmative actions to integrate IPLCs, women and rural youth into decision-making processes.</p>
<b>Component 2. Accelerated protection and restoration of primary forests.</b>	
<b>Outcome 2.1.</b> Improved protection of primary forests in protected areas.	<p>2.1.1. Strengthened protected area management instruments and tools.</p> <p>2.1.2. Regional assessment of the risk of collapse and extent of the Mesoamerican critical forest biomes.</p> <p>2.1.3. Information about the contribution of protected areas and indigenous peoples to conserve primary forests and advance the global biodiversity framework to support fact-based decision making.</p>
<b>Outcome 2.2.</b> Increased area of OECMs that protect primary forests integrity and expand functional connectivity.	<p>2.2.1. National frameworks or protocols for the implementation of OECMs.</p> <p>2.2.2. Established national networks of OECMs that support the conservation of primary forests.</p> <p>2.2.3. Collaboration agreements for transboundary OECMs within the framework of the Mesoamerican Biological Corridor.</p>
<b>Outcome 2.3.</b> Ongoing restoration of 65,000 ha to increase primary forest connectivity.	<p>2.3.1. Updated evaluation of priority areas for Mesoamerican forests landscape restoration.</p> <p>2.3.2. Key priority areas under community-based restoration.</p>
<b>Component 3. Innovative finance and investment.</b>	
<b>Outcome 3.1.</b> Increased financial resources for primary forest conservation.	<p>3.1.1. National analyses of funding gaps and barriers to invest in primary forest landscapes and forest linked livelihoods.</p> <p>3.1.2. Innovative financing instruments and tools to increase investments in primary forest protection, protected areas, OECMs, and forest linked livelihoods.</p> <p>3.1.3. High-level dialogue meetings to mobilise financial resources through bilateral, multilateral, private and philanthropy channels to sustain long-term critical forest biomes conservation.</p> <p>3.1.4. Regional coalition to mobilise funding to accelerate the conservation of primary forests and the development of viable forests linked livelihoods.</p>
<b>Outcome 3.2.</b> Increased number of forest-friendly endeavours.	<p>3.2.1. Innovative mechanisms to incentivise forest-friendly endeavours.</p> <p>3.2.2. Innovative business models to develop forest-friendly goods and services.</p> <p>3.2.3. Project preparation facility to enable access to private and development financing.</p> <p>3.2.4. High impact events and advocacy to accelerate the demand for products from sustainably managed secondary forests and deforestation-free commodities from Mesoamerica.</p>
<b>Component 4. Coordinated and improved learning and regional collaboration.</b>	
<b>Outcome 4.1.</b> Improved national and regional coordination for primary forest protection and conservation	<p>4.1.1. Regional coordination platform for primary forest protection and conservation.</p> <p>4.1.2. Regional long-term communication plan to mobilize support for the conservation of primary forests and critical forest biomes.</p>

<p><b>Outcome 4.2.</b> Lessons on primary forest protection and conservation models are available worldwide</p>	<p><b>4.2.1.</b> Mesoamerican knowledge platform on critical forest biomes (e.g., biodiversity and social information, models of forest management, regulations).  <b>4.2.2.</b> Program lessons, forest management and governance models, and integration of IPLCs, women and rural youth into decision-making processes documented and disseminated at regional and global levels.  <b>4.2.3.</b> South-south cooperation / knowledge exchange with the other critical forests biomes.  <b>4.2.4.</b> Annual regional knowledge exchange workshops.  <b>4.2.5.</b> Harmonized program annual planning, reporting, monitoring and evaluation.</p>
---	--

## GEF-8 CHILD PROJECT CONCEPT

### Annex 5 Honduras Child Project Concept Note under Mesoamerica Forest IP

#### GENERAL CHILD PROJECT INFORMATION

Child Project Title:	Conserving the Intact Forests of the Honduran Moskitia/ Conservando los Bosques Intactos de la Muskitia Hondureña (CONBIM)		
Country(ies):	Honduras	GEF Child Project ID:	TBD
		Type of Child Project	Full-sized Child Project
GEF Agency(ies):	IUCN	GEF Agency Child Project ID:	
Anticipated Executing Entity(s) and Type:	Secretariat of Environment and Natural Resources (SERNA)	Government	
	Forest Conservation Institute (ICF)	Government	
	National University of Agriculture (UNAG)	Government	
	Wildlife Conservation Society (WCS)	CSO	
	Agency for the Development of the Mosquitia (MOPAWI)	CSO	
	Forests of the World	CSO	
GEF Focal Area(s):	Multi-focal Area	Submission Date:	TBD
Type of Trust Fund:	GEF Trust Fund	Child Project Duration (Months)	60
GEF Child Project Grant: (a)	3,519,725	GEF Child Project Non-Grant (b)	0
Agency Fee(s) Grant: (c)	316,775	Agency Fee(s) Non-Grant: (d)	0
Total GEF Financing: (a+b+c+d)	3,836,500	Total Co-financing:	28,000,000
PPG Amount (e):	150,000	PPG Agency Fee(s) (f):	13,500
Total GEF Resources (a+b+c+d+e+f)	4,000,000		
Project Sector (CCM only)	AFOLU		
Program	Meso-America		

\*\*\*POP-UP material start

- Program non-grant amounts (if any) only apply to child projects participating in Programs other than IPs.
- Sector must be filled all MFA Child Projects including CC funds or exclusively using CC funds

\*\*\*POP-UP material end

CHILD PROJECT FINANCING TABLES

GEF Financing Table

Indicative Trust Fund Resources Requested by Agency(ies), Country(ies), Focal Area and the Programming of Funds

	Trust Fund	Country/ Regional/ Global	Focal Area	Programming of Funds	(in \$)		
					GEF Project Financing	Agency Fee	Total GEF Financing
					1,759,862	158,338	1,918,250
					879,931	79,194	959,125
					879,931	79,194	959,125
					3,519,725	316,775	3,836,500

Project Preparation Grant (PPG)

Is Project Preparation Grant requested?  Yes  No

If yes<sup>6</sup>: fill in PPG table (incl. PPG fee)

GEF Agency	Trust Fund	Country/ Regional/Global	Focal Area	Programming of Funds	(in \$)		
					PPG	Agency Fee	Total PPG Funding
IUCN	GEF TF	Honduras	Multi Focal Area	BD STAR Allocation	75,000	6,750	81,750
				CC STAR Allocation	37,500	3,375	40,875
				STAR IP Matching Incentives	37,500	3,375	40,875
<b>Total PPG Amount</b>					150,000	13,500	163,500

Sources of Funds for Country STAR Allocation

GFEF Agency	Trust Fund	Country/ Regional/Global	Focal Area	Source of Funds	Total
IUCN	GEF TF	Honduras	Biodiversity	BD STAR Allocation	2,000,000
			Climate Change	CC STAR Allocation	1,000,000
			IP Matching Incentives	STAR IP Matching Incentives	1,000,000
<b>Total GEF Resources</b>					4,000,000

Indicative Focal Area Elements

Programming Directions	Trust Fund	(in \$)	
		GEF Project Financing	Co-financing
IP Mesoamerica		4,000,000	28,000,000
<b>Total Project Cost</b>			32,000,000

<sup>6</sup> Note: Make this into a "pop-up" which appears only if PPG was selected, and if amount requested is above limits, they have to justify it



Indicative Co-financing

\*\*\*POP-UP material start

Please provide indicative information regarding the expected amounts, sources and types of Co-Financing, and the sub-set of such Co-Financing that meets the definition of Investment Mobilized.

\*\*\*POP-UP material end

Sources of Co-financing	Name of Co-financier	Type of Co-financing	Investment Mobilized	Amount (\$)
Civil Society Organization	Wildlife Conservation Society (WCS), Forests of the World, World Wildlife Fund (WWF), Agency for the Development of the Mosquitia (MOPAWI)	Grant	Investment mobilized	7,000,000
Recipient Country Government	ICF (EU's Proyecto Mi Biosfera)	Grant	Investment mobilized	5,000,000
Recipient Country Government	Honduran Armed Forces' Green Battalion, Padre Andrés Tamayo National Reforestation Program, ICF, SERNA, INA, SAG, UNAG, UNACIFOR, municipal governments (Puerto Lempira, Wampusirpi, Ahuas, Brus Laguna, Juan Francisco Bulnes, Catacamas, Dulce Nombre de Culmi, Irióna)	In-kind	Recurrent expenditures	13,000,000
Other	Support from private sector, indigenous peoples and local communities, other national and international donors	Other	Investment mobilized	3,000,000
<b>Total Co-financing<sup>7</sup></b>				<b>28,000,000</b>

<sup>7</sup> This co-financing amount was preliminarily estimated based on consultations at the workshop and bilateral meetings with key state and non-state actors with current and/or potential presence in the project area. These co-financing projections will be reconfirmed and/or validated during the project document preparation phase, although no major changes are foreseen.



## TABLE ON CORE INDICATORS

### Core Indicators

Project Core Indicators		Expected at PFD
1	<b>Terrestrial protected areas</b> created or under improved management for conservation and sustainable use (Hectares)	1,083,281
2	<b>Marine protected areas</b> created or under improved management for conservation and sustainable use (Hectares)	
3	Area of <b>land restored</b> (Hectares)	1,500
4	Area of <b>landscapes under improved practices</b> (excluding protected areas) (Hectares)	50,000
5	Area of <b>marine habitat under improved practices</b> (excluding protected areas) (Hectares)	
6	<b>Greenhouse Gas Emissions Mitigated</b> (metric tons of CO <sub>2</sub> e)	20,840,244
7	<b>Number of shared water ecosystems</b> (fresh or marine) under new or improved cooperative management	
8	Globally over-exploited <b>marine fisheries</b> moved to more sustainable levels (metric tons)	
9	<b>Reduction</b> , disposal/destruction, phase out, <b>elimination</b> and avoidance of <b>chemicals of global concern</b> and their waste in the environment and in processes, materials and products (metric tons of toxic chemicals reduced)	
10	Reduction, avoidance of emissions of <b>POPs to air</b> from point and non-point sources (grams of toxic equivalent gTEQ)	
11	Number of <b>direct beneficiaries disaggregated by gender</b> as co-benefit of GEF investment	40,000 (14,000 women, 26,000 men)

Explain the methodological approach and underlying logic to justify target levels for Core and Sub-Indicators (*max. 250 words, approximately 1/2 page*)

The target for terrestrial protected areas (Core Indicator 1) is based on the area of two protected areas: Rio Platano Biosphere Reserve (832,339 hectares including cultural zone, designated IUCN Management Category VI) and Tawahka Asagni Biosphere Reserve (250,942 hectares, designated IUCN Category VI). If the Management Effectiveness Tracking Tool (METT) score increases over the life of the project, the protected area hectares will be counted. This child project focuses on protection rather than restoration or sustainable management, thus the targets for land restored (Core Indicator 3) and landscape under improved practices (Core Indicator 4) are less ambitious than those for terrestrial protected areas (Core Indicator 1). The target for Core Indicator 3 is an estimate of natural restoration and expansion of agroforestry systems, while the target for Core Indicator 4 is based on the estimated coverage of the proposed OECM in Warunta. Additional hectares of land restored (Core Indicator 3) and landscape under improved practices (Core Indicator 4) are not proposed at this time due to unresolved and ongoing land tenure conflicts. Implementing extensive forest restoration would potentially legitimize land invasions of traditionally indigenous lands and incentivize additional deforestation and degradation of primary forest. The Project will lay the groundwork for future forest restoration projects in the Honduran Moskitia IFL by first building

institutional, legal, technical and financing frameworks for addressing security and land tenure issues in the project sites. The greenhouse gas emissions mitigated (Core Indicator 6) was calculated with EX-ACT based on estimates for restoration in the Moskitia, improved PA effectiveness management resulting in preventing future forests loss and enhanced conservation.. Number of direct beneficiaries is based on the national census in relevant municipalities.

## PROJECT DESCRIPTION

### 1. Country Context (*maximum 500 words*)

**Describe the country’s relevant environmental challenges and strategic positioning relative to the systems transformation proposed for the program, including relevant existing policies, commitments, and investment frameworks. How are these aligned with the proposed approach to foster impactful outcomes with global environmental benefits?**

Forming part of the Mesoamerica Critical Forest Biome (CFB), Honduras has a territorial extension of 11.19 million hectares with 6.36 million hectares (57%) in 2020 covered with forest ecosystems—humid broadleaf, deciduous broadleaf, coniferous, mixed and mangrove forests. This includes the Moskitia Intact Forest Landscape (IFL) shared by Honduras and Nicaragua, the second largest IFL in the Mesoamerica Critical Forest Biome (CFB). Yet, deforestation and forest degradation have accelerated in Honduras in recent years, especially due to shifting agriculture and commodity-driven deforestation, compromising the integrity and functioning of many forest ecosystems both inside and outside protected areas. Deforestation averaged 20,910 hectares per year between 2015 and 2020 according to FAO, an annual rate of 2.2%, the highest rate in the Americas.<sup>8</sup> According to Global Forest Watch (2023), in 2021, Honduras lost 67,400 hectares of natural forest, equivalent to 35.7Mt of CO<sub>2</sub> emissions.

Despite these challenges, Honduras has promoted multiple policies, strategies, regulatory frameworks and mechanisms to advance conservation and management of IFL. The Government of Honduras has committed to a range of multilateral environmental agreements (MEAs): CBD and post-2020 Global Biodiversity Framework; UNFCCC and Paris Agreement; Declaration on Forests; CITES; ILO Convention 169 on Indigenous Peoples; U.N. Declaration on the Rights of Indigenous Peoples; Nagoya Protocol on Access to Genetic Resources; World Heritage Convention; RAMSAR Convention; EU Forest Law Enforcement, Governance and Trade (FLEGT) Voluntary Partnership Agreement (VPA); Integrated Mesoamerican Forests Program; AFOLU 2040 CCAD-SICA Regional Initiative<sup>9</sup>; Ibero-American and Caribbean Network of Biosphere Reserves (IberoMAB); and Bonn Challenge.

Honduras also has a well-developed set of national policies, institutions and initiatives supporting protection, sustainable use, and restoration of forests through mechanisms such as protected areas, indigenous lands, community forest management, biological corridors, productive landscape restoration, and micro-watersheds. Regulated by Secretariat of Environment and Natural Resources (SERNA) and National Institute for Conservation and Forest Development, Protected Areas and Wildlife (ICF), amongst other institutions, relevant policies include: Forest, Protected Areas and Wildlife Law; General Environmental Law; National Biodiversity Strategy; National Program for the Conservation of Terrestrial Ecosystems; National Program for the Recovery of Degraded Ecosystem Goods and Services; Government Plan to Refound Honduras (2022-2026).

---

<sup>8</sup> <https://www.fao.org/3/ca9825en/ca9825en.pdf>

<sup>9</sup> [https://www.sica.int/documentos/concept-note-afolu-2040-regional-initiative\\_1\\_128650.html](https://www.sica.int/documentos/concept-note-afolu-2040-regional-initiative_1_128650.html)

National initiatives aligned with this IP include: titling more than 300,000 hectares of indigenous lands in the Honduran Moskitia; establishing five control posts in the RPBR and TABR; Padre Tamayo National Reforestation Program including the Green Battalion; Environmental Cabinet led by SERNA; Protected Areas and Wildlife Fund (FAPVS); Jaguar (*Panthera onca*) and Baird's Tapir (*Tapirus bairdii*) Conservation Plans; land titling of more than 300,000 hectares for indigenous and Afro-descendant peoples; National Program for the Conservation and Landscape Restoration of Terrestrial Ecosystems; National Biodiversity Policy; National Wildlife Strategy; Illegal Logging Strategy; Wetlands and Coastal Marine Areas Policy; National System of Protected Areas Strategic Plan; National Volunteering Plan and Network; NAMA for Transforming the Livestock Sector; NDC.

Taken together, these developments, initiatives and political will are well aligned with the goals of this IP to support transformational change conserving and safeguarding Honduras' Moskitia IFL. Many of the underlying threats affecting Honduras' forests, as well as potential solutions are relevant to all Mesoamerican countries and potentially for countries in other regions of the world participating in the CFB IP, offering strong potential for exchange, partnership, and scaling up.

## 2. Project Overview and Approach (*maximum 1250 words*)

**a) Provide a brief description of the geographical target(s), including details of systemic challenges, and the specific environmental threats and associated drivers that must be addressed;**

Project interventions will center on three sites (Annex 1) in Honduras' northeastern departments of Gracias a Dios, Olancho and Colon with regional, transboundary, national and local importance for forest ecosystems, stored carbon, globally important biodiversity (i.e., jaguar, tapir, white-lipped peccary, giant anteater, scarlet macaw, great green macaw) and ecosystem services (i.e., climate regulation, clean water provision). The project sites are home to over 100,000 peoples of diverse cultural backgrounds including indigenous peoples (i.e., Miskitu, Pech, Tawahka, Garífuna) and mestizos, overlap with indigenous lands across nine territories, and contain the ruins of ancient civilizations:

- **Rio Platano Biosphere Reserve (RPBR)**, covering 832,339 hectares with buffer, cultural and nuclear zones and designated a UNESCO World Heritage Site
- **Tawahka Asagni Biosphere Reserve (TABR)**, covering 250,942 hectares
- Indigenous forests of **Warunta**, covering 65,370 hectares.

In recent decades, the forests in the Moskitia IFL have experienced increasing threats from: i) legal and illegal small- and large-scale cattle ranching (responsible for 90% of recent deforestation in the Mesoamerica CFB<sup>10</sup>); ii) agricultural expansion; iii) illegal logging and timber harvesting; iv) fires; v) hurricanes; vi) illegal hunting and wildlife trade; vii) illegal roads; and viii) existing and future dams. For example, the departments of Olancho, Gracias a Dios and Colon cover 44% of the area of Honduras but were responsible for 58% of Honduras' tree cover loss between 2001 and 2021, totaling 734,000 hectares.<sup>11</sup> Many of the indigenous peoples, women and youth in the project sites also experience high rates of poverty, limited economic and educational opportunities, and rely heavily upon natural

---

<sup>10</sup> Wildlife Conservation Society, [Saving Mesoamerica's Five Great Forests](#).

<sup>11</sup> <https://www.globalforestwatch.org/dashboards/country/HND/>

resources and subsistence agriculture, making them highly vulnerable to external factors including climate change. Underlying drivers of these threats that must be addressed include: i) drug trafficking in protected areas; ii) lack of indigenous control over their land titles and resource management; iii) lack of effective law enforcement; iv) lack of harmonization of national and sub-national laws, policies and regulations; v) limited investment in forest protection, restoration and sustainable management.

**b) Describe the existing or planned baseline investments, including current institutional framework and processes for stakeholder engagement and gender integration;**

Management of the Honduran Moskitia IFL—with 1,083,281 hectares covered by declared protected areas (RPBR and TABR) and an additional 65,370 hectares covered in forests outside protected areas (Warunta)—involves a complex panorama of stakeholders working at multiple levels and organizations (Annex 2). In this landscape, nine indigenous councils and federations representing the Miskitu, Tawahka, Pech and Garifuna peoples live on titled and untitled traditionally indigenous lands. These indigenous councils and federations share responsibility for natural resource and land management not only with eight municipalities across three departments, but also with ICF which manages forests, protected areas and wildlife and with SERNA which manages environment and natural resources (including forest carbon markets), amongst other national actors.

Baseline investment in the Honduran Moskitia IFL include:

- Grants to CSOs: Projects to be implemented in the Honduran Moskitia IFL to strengthen protection, sustainable management and restoration of protected areas and indigenous lands include: Forests of the World Program (Forests of the World); Five Great Forest Initiative (WCS – European Union); Resilient and Biodiverse Landscapes of Northern Mesoamerica (UK DEFRA – WCS); Territorial Inclusive Economic Development in the Mosquitia Region (Swiss Agency for Development and Cooperation); Connecting Landscapes (IUCN); Indigenous Peoples of the Mosquitia Project (MOPAWI, Ford Foundation, Global Network for the Right to Food and Nutrition – Pan para el Mundo); Combatting Conservation Crime in Honduras (WWF – USAID); Advancing toward Effective Conservation and Rights-based Territorial Management in Latin America (IUCN).
- Grants to GOs: ICF will receive a grant for the Integrated Management of the Rio Platano Biosphere (ICF – EU).
- In-kind contributions from GOs: Honduran government institutions will provide in-kind contributions for the protection and management of the three intervention sites including Honduran Armed Forces' Green Battalion, Padre Andrés Tamayo National Reforestation Program, ICF, SERNA, INA, SAG, UNAG, UNACIFOR, and municipal governments.
- Private sector engagement: Additional support will be provided from the private sector, indigenous peoples and local communities (IPLC) and other national and international donors for sustainable production of carbon, cocoa, agroforestry, timber, and non-timber forest products.

However, the Honduran Moskitia is also endangered by infrastructure development plans, such as the hydroelectric dam Patuca III, offshore oil and gas development, and road development which may affect IPLC access to natural resources and forest integrity.

At present, OECMs are not officially recognized in Honduras. However, the Project will support establishing and promoting this new modality as part of national on-going effort led by SERNA. For instance, the forests of Warunta may be formalized and recognized as an OECM as a result of this project.

Engagement with stakeholders in the design and implementation of the Project will be facilitated in part through utilization of existing platforms and alliances, primarily the relevant indigenous territorial councils and federations (Annex 2) to strengthen IPLC-led conservation.

The Project will employ strict adherence to the principles of Free Prior and Informed Consent (FPIC) throughout project design and implementation, using existing protocols for Miskitu peoples and developing new protocols for others. During the Project's design phase local consultations will be used to identify relevant activities developed with local NGOs, IPLCs and MSMEs. A consultation workshop was held for the Project on March 23-24, 2023, in Tegucigalpa consulting with governmental, non-governmental and indigenous representatives (i.e., Miskitu, Tawahka, Pech, Garifuna) to ensure stakeholder engagement and gender integration.

Gender-responsive and gender-transformative approaches will be pursued throughout the Project with regards to land tenure, access and resource management, access to finance and trainings, governance mechanisms including the Indigenous Women's Network, and jobs creation through NbS interventions and benefit-sharing. The Project will promote integrated landscape management, fostering productive and conservation activities that limit land-use change with a gender perspective and a focus on reducing gender-based violence (GBV).

**c) Describe how the integrated approach proposed for the child project responds to and reflects the Program's Theory of Change, and as such is an appropriate and suitable option for tackling the systemic challenges, and to achieve the desired transformation with multiple global environmental benefits; and**

The Project will utilize an integrated approach to bring about transformation change in global CFB by combining four levers for systems transformation (i.e., governance and policies, financial leverage, innovation, and multi-stakeholder dialogues) which will contribute to catalyzing actions and partnerships towards removing the drivers of degradation and secure ecosystems services flows with global environmental benefits.

Aligned with the IP, the Project's vision is "primary forest in the Moskitia IFL in Honduras conserved in three sites (Rio Platano, Tawahka, Warunta) through strengthened governance and protection, ensuring flow of ecosystem services for indigenous and non-indigenous people and planet" to be achieved through four transformative outcomes:

- Outcome 1: Adoption/integration of enabling legal and regulatory frameworks and policies for protection, conservation and restoration of primary forest in the Honduran Moskitia IFL
- Outcome 2: Accelerated protection, conservation and restoration of the primary forest of the Honduran Moskitia IFL
- Outcome 3: Scaled up investment in the protection, conservation and restoration of the primary forest in the Honduran Moskitia IFL
- Outcome 4: Enhanced regional, national and sub-national cooperation and coordination for the protection, conservation and restoration of the primary forest in the Honduran Moskitia IFL.

**d) Describe the project's incremental reasoning for GEF financing under the program, including the results framework and components.**

Transformative change supporting conservation of the project landscapes, IFLs and beyond will occur through the following linked components and the referential activities (Annex 3):

**Component 1. Strengthening enabling conditions for the protection, conservation and restoration of primary forests.** The Project will facilitate advances in adopting, integrating and harmonizing policies and regulatory frameworks favorable to forest conservation and indigenous peoples' rights. This will provide innovative governance additionality by strengthening the existing multi-tier indigenous governance framework of nine indigenous territories in the IFL (Annex 2) to prepare and implement indigenous territorial regulations, building indigenous leadership, technical and administrative capacities at the landscape, territorial, and community levels. These indigenous territorial regulations will be aligned with relevant governmental national and municipal laws, policies and regulations and will be supported by multi-stakeholder and intersectoral management committees and co-management mechanisms in protected areas. This component will also provide legal and regulatory additionality by supporting the participatory preparation and implementation of indigenous regulations, led by the indigenous territorial councils and federations, that regulate access, use, protection, control and exclusion of land and natural resources in the nine indigenous territories.

**Component 2. Accelerated protection and restoration of primary forests.** Building on advances under Component 1, indigenous governance entities will work jointly with governmental and non-governmental organizations to significantly increase effective, on-the-ground institutional presence of organizations providing regulatory and value chain support and law enforcement in the IFL, ultimately seeking to halt the advance of the agricultural and ranching frontier and reduce other illicit activities which destabilize the landscape. This will result in environmental additionality with global benefits in: terrestrial protected areas under improved management, land restored, landscapes under improved practices, and greenhouse gas emissions mitigated (see Core Indicator Table for details).

**Component 3. Increased investment in positive forest/nature landscapes and livelihoods.** Long-term implementation of the strategies proposed under Components 1 and 2 requires sustainable funding to close the gap between financial needs and existing flows of financing for IFL protection and governance. Consistent with global biodiversity and climate change agreements, the project offers financial additionality by identifying and scaling a variety of financial and policy mechanisms including: harmful incentive reform (including the reduction or elimination of environmentally harmful subsidies); biodiversity offsets; domestic budgets and tax policies; green financial products; carbon markets; official development assistance (ODA); sustainable supply chains; and philanthropy.

**Component 4. Fostering knowledge management, cooperation and coordination.** By fostering inter-institutional knowledge management, cooperation and coordination with indigenous peoples sub-nationally, nationally and binationally (with Nicaragua), the Project will contribute to innovation additionality regarding synergies and complementarity of capacities and experiences of non-state and state actors. A special focus will be on knowledge exchange and coordination with the project in Nicaragua on topics such as indigenous governance and reducing the drivers of deforestation, thus fostering transboundary cooperation.

### **3. Engagement with the Global / Regional Framework (*maximum 500 words*)**

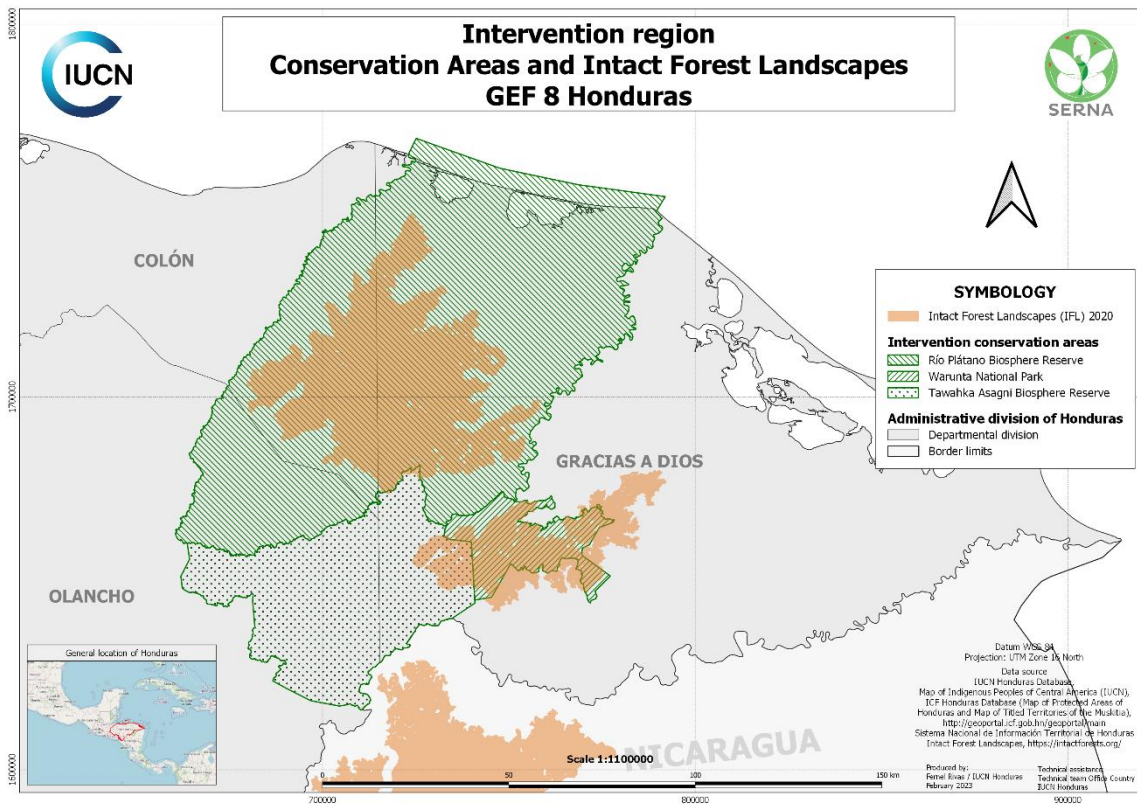
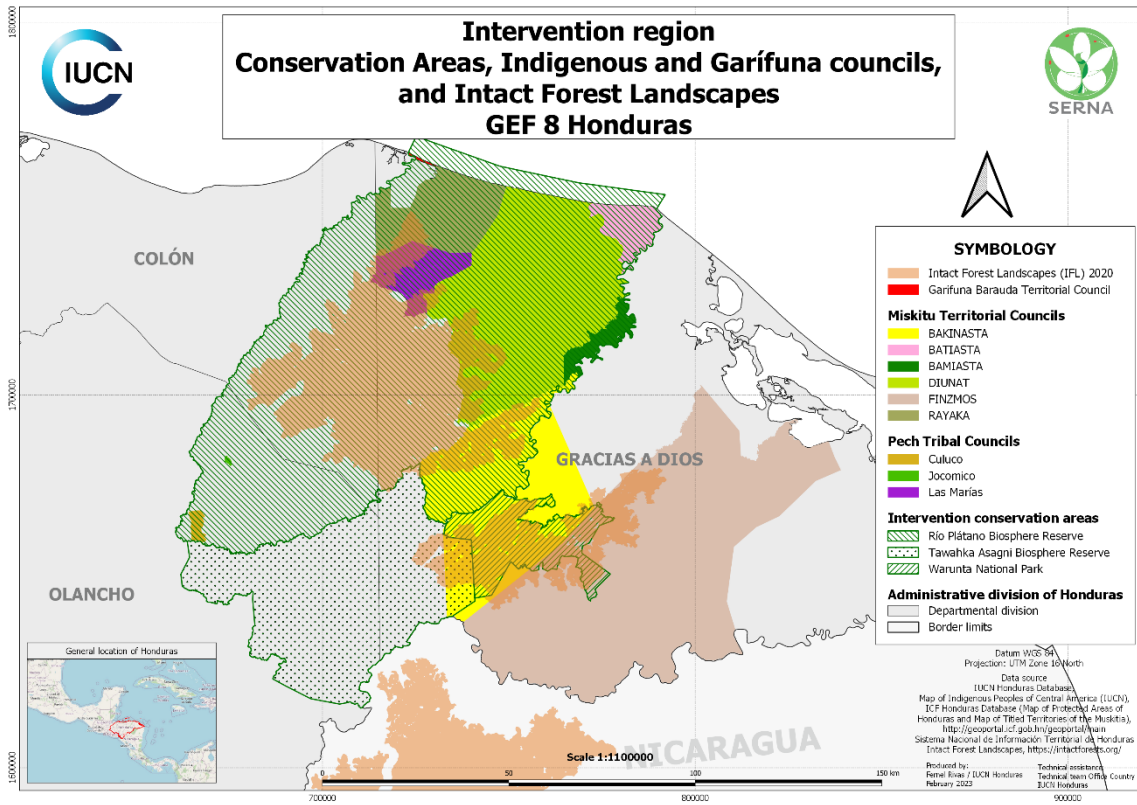
**Describe how the project will align with the global / regional framework for the program to foster knowledge sharing, learning, and synthesis of experiences. How will the proposed approach scale-up from the local and national level to maximize engagement by all relevant stakeholders and/or actors?**

The proposed Project will be designed from the ground up to align with the regional framework of the Program to support knowledge sharing, learning, and synthesis of experiences – both as a contributor and as a recipient of information and knowledge products and experiences – and to support scaling up to maximize impact and sustainability. Key elements of this aligned approach include the following:

- Governance and regional-level policy coherence. Component 1 of the Project includes support for efforts to strengthen and further align regional policies for conservation of Mesoamerican forests, including efforts to control trade in illegal timber, cattle, and species. In addition, the Project team will participate in all meetings of the Program-level Steering committee and work to implement all adaptive management recommendations of the Program Steering Committee. Active participation of Project team and stakeholders in programmatic knowledge exchange workshops, trainings and exchanges. Project will include budgeted resources for participation of project team and key relevant stakeholders in all program-supported knowledge exchange workshops, trainings and exchanges designed for Honduras. A cost-sharing approach between the Regional IP Coordination and Support project and national child projects including this one will be agreed to during PPG-stage development of the Regional and national child projects.
- Contribution to programmatic communications. Project will include budgeted resources, dedicated activities and related targets under Component 4 for contribution to programmatic communications and knowledge products including annual Mesoamerica Forest IP Year in Review, web stories, and high-priority knowledge products capturing experiences and contributing to the development and wider use of best practices and approaches for conservation of primary forests. This support also includes support for coordinated efforts to raise awareness at global, regional and national levels, of the importance of the Mesoamerica Forest biome, to a level commensurate with that of the Amazon and Congo forest basins.
- Support for harmonized monitoring approaches. Project results framework and monitoring approaches will align with and utilize the key program-level indicators and MRV approaches defined in the Program Framework Document, to ensure apples-to-apples comparisons of national-level project performance and support development of consolidated Program-level reporting and adaptive management. Project-level progress across all results framework indicators will be shared with the Regional coordination project team on an annual basis, in advance of the July reporting schedule, to facilitate consolidated reporting at the Program-level by the Regional coordination team through an annual Program Report submitted to GEF.
- Support for high-level participation in finance mobilization roundtables and other coordinated efforts to raise new and additional funding for Mesoamerican forest conservation. The Project will include budgeted resources and activities under Component 3 supporting coordinated work (with IP partners) to secure new and additional funding for conservation of primary forests. A wide range of approaches and tools will be considered including innovative finance (tax incentives, standards, green bonds, blended finance, debt-for-nature swaps, offsets, more) and support for high-level engagement and dialogues with country finance ministers, national development agencies, multilateral development banks and other key providers of development finance, as well as with private sector leaders, to both align and enhance existing programs of support and develop new initiatives and partnerships that enable and incentivize ambitious targets, investments and reforms and action for conserving and restoring Mesoamerica's forests.



# Annex 1. Maps of Project Intervention Sites





## Annex 2. Governance Framework in the Honduran Moskitia IFL

Scale	Indigenous governance entities	Relevant non-indigenous organizations and their governance roles
<b>Landscape</b>	Union of Indigenous and Afro-descendant Peoples of the Honduran Moskitia (UPINMH) Protected Area and OECM Co-management Committees with indigenous decision-making powers	<ul style="list-style-type: none"> <li>• Authority responsible for forest, protected area (RPBR, TABR) and wildlife management: Forest Conservation Institute (ICF)</li> <li>• Authority on environment and natural resource management including carbon markets, Focal Point for World Heritage Sites, CBD, UNFCCC: Secretariat of Environment and Natural Resources (SERNA)</li> </ul>
<b>Indigenous territory</b>	<p><b>Miskitu People:</b> 6 of 12 of Unity of the Moskitia's (MASTA) Indigenous Territorial Councils (CTI) including RAYAKA (Belen, RPBR); DIUNAT (Brus Laguna, RPBR); BATIASTA (Barra Patuca, RPBR); BAMIASTA (Ahuas, RPBR); BAKINASTA (Wampusirpi, RPBR and TABR); FINZMOS (Morocon–Segovia, Warunta)<sup>12</sup></p> <p><b>Pech People:</b> Federation of Pech Indigenous Tribes of Honduras (FETRIPH, Pech Tribal Council of Las Marias, RPBR)</p> <p><b>Tawahka People:</b> Tawahka Indigenous Federation of Honduras (FITH, Krausirpi, TABR)</p> <p><b>Garifuna People:</b> Garifuna Territorial Development Council (BARAUDA, Juan Francisco Bulnes, RPBR)</p>	<ul style="list-style-type: none"> <li>• Providers of basic services to local communities with competencies in land use planning: Municipalities of Gracias a Dios (Juan Francisco Bulnes, Brus Laguna, Ahuas, Wampusirpi, Puerto Lempira, Commonwealth of Gracias a Dios), Olancho (Catacamas, Dulce Nombre de Culmi), and Colon (Iriona)</li> <li>• Authority on agriculture and ranching: Secretariat of Agriculture and Livestock (SAG)</li> <li>• Authority on land tenure: National Agrarian Institute (INA)</li> <li>• Law enforcement agencies responsible for enforcing and prosecuting illicit activities against indigenous peoples and lands, environmental defenders, and women (gender-based violence): Supreme Court (courts and judges); Public Ministry (Special Prosecutor's Office of Ethnicities and Cultural Heritage, Special Prosecutor's Office of the Environment, Human Rights Commissioner); Nagoya Protocol on Access to Genetic Resources); Armed Forces (including the Green Battalion); police</li> <li>• Other regulatory and value chain support government agencies providing inputs and technical assistance in the IFL: Secretariat of Economic Development (SDE), National Vocational Training Institute (INFOP) Academic institutions conducting</li> </ul>

<sup>12</sup> A seventh Miskitu indigenous territory, AUHYA YARI (Puerto Lempira), is subject to the downstream impacts of deforestation in the project sites and will, therefore, be an indirect beneficiary of the project.

Scale	Indigenous governance entities	Relevant non-indigenous organizations and their governance roles
<b>Community</b>	Indigenous community councils, indigenous women and youth organizations, indigenous forest brigades, productive groups associated with relevant value chains (e.g., ranching associations, dairy associations, cocoa and coffee grower associations)	<p>research and training on relevant topics: National University of Agriculture (UNAG), National University of Forestry Sciences (UNACIFOR)</p> <ul style="list-style-type: none"> <li>• Non-governmental organizations providing technical assistance and financing: Agency for the Development of the Mosquitia (MOPAWI), Wildlife Conservation Society (WCS), World Wildlife Fund (WWF), International Union for the Conservation of Nature (IUCN), Foundation for Rural Business Development (FUNDER), Ethnic Community Development Organization (ODECO), Madera Verde Foundation, Bosques del Mundo</li> <li>• Private sector actors providing technical assistance, financing and markets for more sustainable practices: British Petroleum (BP) Group, chocolate buyers, national cattle rancher associations, national cocoa growers associations, national agroforestry associations.</li> </ul>

### **Annex 3. Referential Activities per Project Component**

#### **Component 1. Strengthening enabling conditions for the protection, conservation and restoration of primary forests**

- Identify gaps and opportunities in policies and regulatory framework to maximize biodiversity conservation, climate change mitigation and adaptation, good governance, and participation and respect for the rights of indigenous peoples and local communities including women and youth.
- Support development or updating of free, prior informed consent (FPIC) protocols for 4 indigenous peoples (i.e., Miskitu, Tawahka, Pech and Garifuna) and nationally, establishing the minimum requirements for meeting and monitoring FPIC.
- Strengthen existing or new inter-institutional committees for the RPBR, TABR and OECDM de Warunta with corresponding regulations and mechanisms for shared management of protected areas, involving indigenous entities, national and municipal government agencies, NGOs, and donors.
- Strengthen the leadership, technical and administrative capacities and vertical and horizontal integration of existing indigenous governance entities in 9 indigenous territories (Annex 2) with a focus on strengthening leadership of women and youth in such entities, including the formation of women's commissions within the indigenous territorial councils and federations.
- Support formulation and initiate implementation of indigenous land use regulations and protocols that regulate access, use, protection, control and exclusion of land and natural resources in the 9 indigenous territories based on knowledge of existing national and municipal laws, protected area management plans, and other policies and regulations but respecting indigenous institutionality (aka, own forms of organizations and norms for the administration of their lands and natural resources).
- Support the formulation or updating of protected area management plans harmonized with overlapping indigenous territorial "life plans."
- Advocate for and strengthen the capacities of "mobile courts" in understanding and prosecuting illicit activities related to environmental and indigenous rights violations, including supporting logistics of mobilizing such courts to the Honduran Moskitia and training judges and attorneys on relevant environmental and indigenous law.
- Support the formulation of diversified OECDM models for Honduras that integrates protection, sustainable management and restoration nature-based solutions in forest landscapes.
- Conduct a valuation of the IFL and its ecosystem services to gauge the economic opportunities of conserving the IFL and the economic losses derived from deforestation and forest degradation.
- Support development of regulations for traceability within the beef and dairy sectors to reduce deforestation caused by cattle ranching.

Adoption and consolidation into territorial planning documents of additional enabling policies, strategies, frameworks and reforms at the subnational, national and regional levels on topics such as: carbon markets, cattle ranching, forestry, agroforestry, restoration, hydroelectric energy, roads in protected areas, amongst others.

#### **Component 2. Accelerated protection and restoration of primary forests**

- Support implementation of indigenous territorial regulations and “life plans” for 9 indigenous territories, guaranteeing full and effective participation of and livelihoods for men, women and youth.
- Create, equip and train indigenous forest brigades to the protect forests and natural resources in indigenous territories, maximizing the use of modern technologies (e.g., early warning systems, acoustic monitoring of wildlife and chainsaws, remote sensing for fire detection, Spatial Monitoring and Reporting Tool (SMART) Conservation Software, cell phone apps, drones, etc.)
- Expand effective, on-the-ground institutional presence and capacities of the Armed Forces’ Green Battalion, ICF, Public Prosecutor's Office, SAG, SERNA on issues related to the management and governance of indigenous territories, protected areas, World Heritage Sites, social inclusion, and other national and international legal instruments by establishing compulsory personnel training and certification programs in relevant entities.
- Support the implementation of diversified OECM models.
- Coordinate actions with the Andrés Tamayo Restoration Program and municipalities for the restoration of micro-watersheds and degraded lands, maximizing ecosystem services derived from such restoration.
- Engage the private sector in sector-specific (e.g., beef, dairy, forestry, hydroelectric energy, oil and gas) territorial and national dialogues to reach zero-deforestation agreements and negotiate incentives with coordination of such agreements enforced in coordination with relevant enforcement agencies, such as the Armed Forces’ Green Battalion.
- Support the preparation of terms of reference for the strategic environmental impact study of the PATUCA III Hydroelectric Power Plant requested by the World Heritage Committee.
- Support pilot projects for community forest management and the implementation of a wood traceability system as part of the implementation of the AVA/FLEGT voluntary agreement.
- Support pilot projects for improved traceability within the beef and dairy sectors to reduce deforestation caused by cattle ranching.
- Implement updated national wildlife conservation plans which promote landscape connectivity (biological corridors), such as those for jaguar (*Panthera onca*) and tapir (*Tapirus bairdii*).
- Promote strategies to reduce gender-based violence (GBV) against indigenous peoples and local communities as a result of conflicts, insecurity and in-migration associated with the advance of the agricultural and ranching frontier in the IFL.
- Improve procedural gender justice for women participating in the project by implementing GEF’s Gender Safeguards, providing childcare, and ensuring broad participation of women in project activities and decision-making processes.
- Conduct additional actions that favor the efforts of intact forest protection, conservation and restoration including: i) support to the forestry sector in processes of negotiation of sovereign carbon credits to maximize benefits to indigenous peoples and local communities; ii) mobilization of complementary resources with other programs, projects and public initiatives (for example, the National Program for Reforestation and Protection of Padre Andrés Tamayo Watersheds) and private; iii) positive investments in the forest landscape and livelihoods will be promoted by ensuring the adoption of more sustainable practices; iv) establishment of payments for environmental services.

### **Component 3. Increased investment in positive forest/nature landscapes and livelihoods**

- Conduct financial analyses to identify the funding gap and financial and policy solutions for protecting the Honduran Mosquitia IFL.
- Identify, design and implement a variety of sustainable financing mechanisms for 9 indigenous territorial councils and federations, RPBR, TABR and Warunta.
- Provide indigenous women with access to alternative financing (e.g., cooperative banks) for productive activities.
- Scale up and strengthen forest-positive livelihoods including adding value (e.g., certification, processing) to community-based forest-based initiatives with strong participation of small and medium-sized forest owners, women, youth, smallholders and local stakeholders. Based on feasibility studies to be conducted, products might include but are not limited to: carbon products; high value timber products; non-timber forest products (e.g., allspice, natural gum (chicle), Ramon nut, honey, fibers for handicrafts, wild fruits, tubers and roots); spice, seed and nut agroforestry plantation products selecting species adapted to site conditions (e.g., cinnamon, vanilla, allspice, clove, annatto) and avoiding invasive species; coffee, tea and cocoa products; fruit plantation products (e.g., bananas, plantains, crabapples, mango, papaya); community-based tourism; and agricultural products (e.g., grains, tubers, vegetables, fruits, seeds, nuts, herbs, and agave).
- Expand capacities of indigenous leaders on the forest carbon market and, where possible, support fair inclusive negotiations and access and benefit sharing (ABS) mechanisms with the government and the private sector to generate economic, social and environmental benefits in favor of indigenous peoples and local communities.
- Accelerate private sector commitments in key forest-relevant sectors for investing in zero-deforestation value chains for products originating from the Honduran Mosquitia IFL.
- Accelerate investment in the positive management of the forest landscape and the restoration of ecosystems through agroforestry, silvopasture systems and natural regeneration, by conducting an analysis and formulating an action plan for restoration in the IFL and supporting restoration through the Andrés Tamayo Restoration Program.
- Leverage complementarity of funds from other initiatives, programs and projects that operate in the territory to favor reforestation, restoration and protection actions in indigenous territories and protected areas, including strengthening the effectiveness of the existing Mosquitia Donor Roundtable.
- Promote the establishment of compensation mechanisms for ecosystem services (e.g., water provision for hydroelectric dams, carbon sequestration, climate regulation, etc.).
- Conduct pilot experiences for non-indigenous peoples providing compensation to indigenous peoples for access and use to indigenous lands.

### **Component 4. Fostering knowledge management, cooperation and coordination**

- Strengthen capacities, awareness and access to information of the main agents involved in the conservation of forest landscapes, including indigenous peoples, women, youth, governmental and non-governmental organizations, and the private sector.
- Conduct environmental education and awareness campaigns in areas which serve as sources of migrant farmers and ranchers to the IFL.

- Increase knowledge and improve skills and practices that favor the conservation and protection of critical forests prioritized by the project (environmental education and awareness campaign).
- Improve application of Mesoamerican-wide regional strategies, policies and commitments for the conservation and restoration of forest landscapes.
- Improve transboundary exchange and learning between indigenous and government entities of Honduras and Nicaragua in the same IFL including: strengthening the Binational Biosphere Committee; supporting indigenous south-south exchanges and conferences such as Sihkrutara-Tawahka (Muihka); promoting joint landscape planning; promoting joint statements and declarations at the Mesoamerican level; strengthening border controls and security; amongst other strategies.
- Enhance adaptive management of intellectual property and coordination between projects, partners and donors.
- Exchange learning and lessons learned with the other implementing agencies in Honduras.
- Increase awareness sub-nationally, nationally and regionally about the conservation of forests in critical condition.
- Scale up learning derived from the implementation and execution of GEF projects in Honduras, in particular in which IUCN has been participating, thus promoting adaptive management so that the project integrates experiences derived from its own project implementation and execution.