

The current status and distribution of land snails in the Pacific Islands of Oceania

Compiled by Helen Pippard, IUCN Oceania Regional Office

Economic growth and a rising human population (now approximately 7 million people), is placing ever-increasing demands on the natural resources of Pacific Island countries. Resources are vulnerable to over-harvesting, deforestation, coastal development and agricultural expansion: habitats are being degraded, fragmented, or completely destroyed. Added to this are the increasing impacts of invasive alien species and climate change, which present serious threats to the many rare and endemic species found in the Pacific, and which in turn affect the livelihoods of the people who rely on these species for their livelihoods. There is therefore an urgent need to implement effective conservation measures to safeguard the ecosystem resources of the region. However, the lack of basic data on species, out-of-date information, and poorly studied areas means that very little is known about the majority of species in the region: without this baseline data, it is extremely difficult, if not impossible, to implement conservation plans.

In 2007, IUCN Oceania, in partnership with the Secretariat of the Pacific Regional Environment Programme (SPREP), and Conservation International, initiated a process to build capacity and improve knowledge and information on Pacific Island species. A species' conservation status is one of the most useful signs for assessing the condition of an ecosystem and its biodiversity, and this process would therefore provide much needed baseline data to enable governments, communities and other organizations to implement effective on-

the-ground conservation planning and management. Funding was received from the Critical Ecosystem Partnership Fund (CEPF) and the Fonds Pacifique to begin this process, by carrying out biodiversity assessments for freshwater fishes, land snails and reptiles.

The project established a regional network of experts who were trained to carry out biodiversity assessments according to the IUCN Red List Categories and Criteria. The resulting species' accounts are based on evaluations made during two IUCN workshops held in Fiji in 2010, and contain information on each species' conservation status, distribution and relative risk of extinction. The accounts are available through the IUCN Red List of Threatened Species™ (IUCN Red List) website (www.iucnredlist.org). Major threats and recommendations for conservation action are also identified.

Assessments for land snails focused on a mixture of taxon-based and geographic-based assessments, due to the limited but specialized expertise available. Assessments concentrated on Fiji and Palau geographically, and on completing assessments for as many wider ranging families in these two countries as expertise and data allowed. This dual strategy allowed a robust, unbiased assessment of extinction threat among land snails in Polynesia, Micronesia and Melanesia.



Ulong Island in Palau is impacted by tourism and invasive species such as rats, which is threatening native fauna and flora © Helen Pippard

Results

This project carried out assessments for 166 species of land snail native to Micronesia, Polynesia and Melanesia. This summary presents the major results of the project and is intended to be read in conjunction with individual species' accounts available on the IUCN Red List website.

(1) Conservation status of land snails

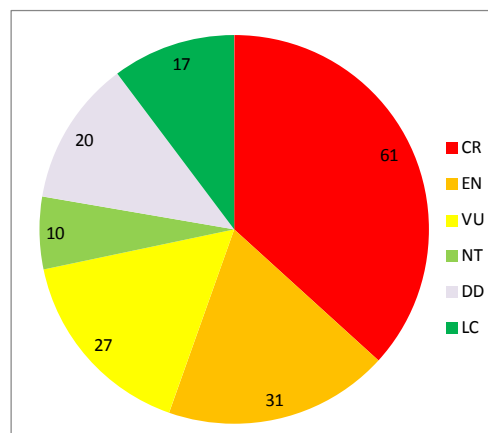
The majority of land snails (119 species or 72%) have been assessed as threatened (in categories Critically Endangered (CR), Endangered (EN) and Vulnerable (VU)) as shown in Figure 1. 61 (37%) have been assessed as Critically Endangered – the highest level of threat that can be assigned to a species in the wild. 31 species (19%) have been assessed as Endangered and 27 species (16%) have been assessed as Vulnerable. Disturbingly, a large number of Critically Endangered species have also been assigned the tag of Possibly Extinct (PE). No species are listed as Extinct or Extinct in the Wild, although as stated, some do carry the tag of Possibly Extinct.

A number of species have been assigned the Category of Vulnerable under criterion D2 – for example *Thaumatodon laddi* and *Fijianella cornucopia* from the Lau group in Fiji. These species are known from a single small location, and are at risk from plausible future threats such as invasive species that could impact the species and drive it towards extinction in a very short time.

A further ten species (6%) have been assigned the category of Near Threatened (NT). These species are close to qualifying for a threatened category. Seventeen species (10%) are listed in the lowest category of threat – Least Concern (LC). Generally, these species are widely distributed with no known major threats impacting them and have a lower risk of extinction. Due to a lack of information, (such as very few known records) the extinction risk could not be evaluated for 20 species (12%), and these have all been categorized as Data Deficient (DD).

The Red List category of threat assigned to each of the 166 assessed species is given in Appendix 1. This Appendix also lists other land snail species assessed prior to 2011 as part of other projects: in total, 395 species of terrestrial land snails have now been assessed for the IUCN Red List.

Figure 1: All species assessed by conservation status
n=166



(2) Spatial distribution

Figure 2 shows the number of species assessed by country and by conservation status. However, as the majority of assessments focused on Fiji and Palau (95 and 56 species respectively), it is difficult to make generalizations for Melanesia, Micronesia or Polynesia: most other countries in the region have assessments for less than 10 species.

Maps of species richness have been produced for Fiji and Palau, as these are the countries where the majority of assessments focused - see Figure 4. In Fiji, the highest concentration of different species are seen on the island of Viti Levu (especially in the centre) and in the Lau group. Whilst this could be indicative of a natural higher diversity, these areas have also been sampled more frequently. In Palau, diversity is fairly uniform throughout the archipelago, although the large island of Babeldaob in the north and the island of Ulong to the west do contain a lower number of records. As the islands have been surveyed extensively in recent times, this lower diversity could be indicative of threats acting on snail populations there.

Endemism

Of the 166 land snails, 143 (86%) are endemic to a single country in the region: 72 of these are endemic to Fiji and 52 to Palau. Most species are endemic to single islands or even single ridges, especially on the high islands of the region. Snails recorded from low islands, coral atolls and the shore zone of higher islands tend to have a wider distribution. Figure 3 shows the total number of endemic species and their conservation status, and also compares the threat status for endemic species from Fiji and Palau.

Figure 2: All species assessed by country and conservation status

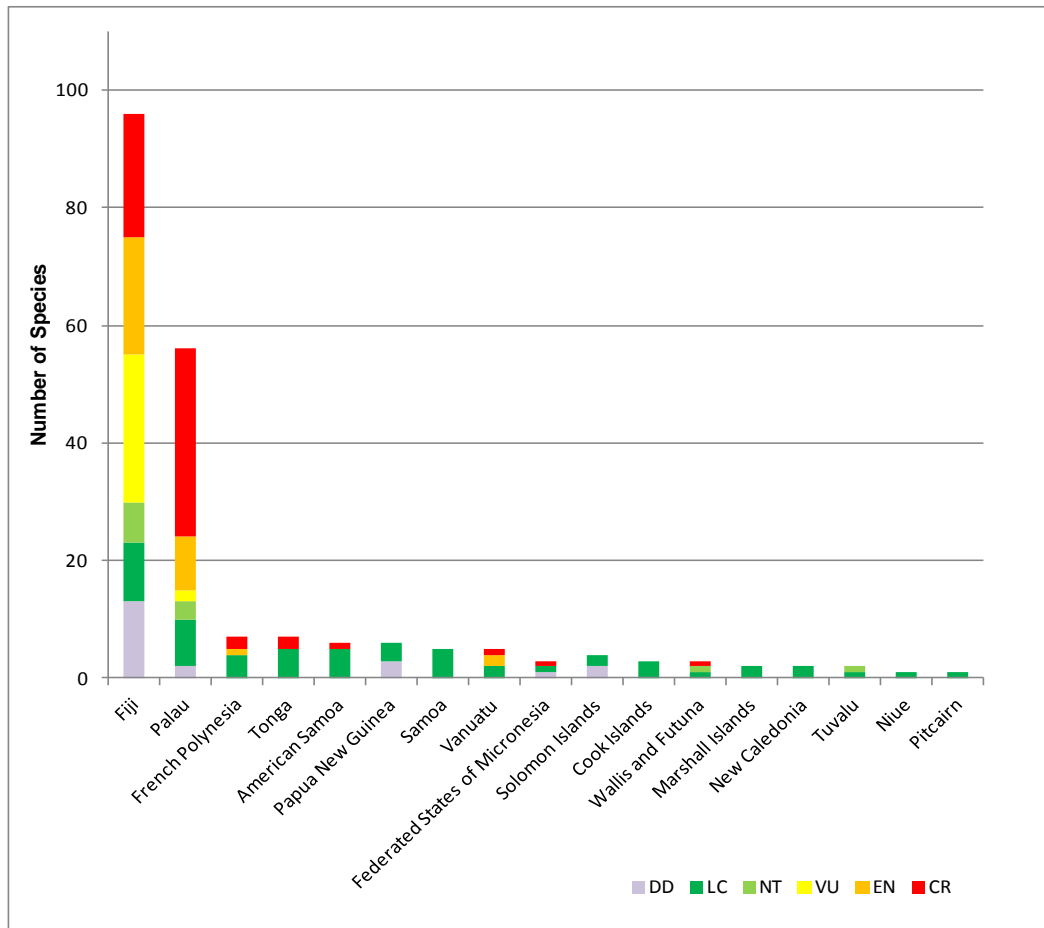


Figure 3: Number of endemic species assessed

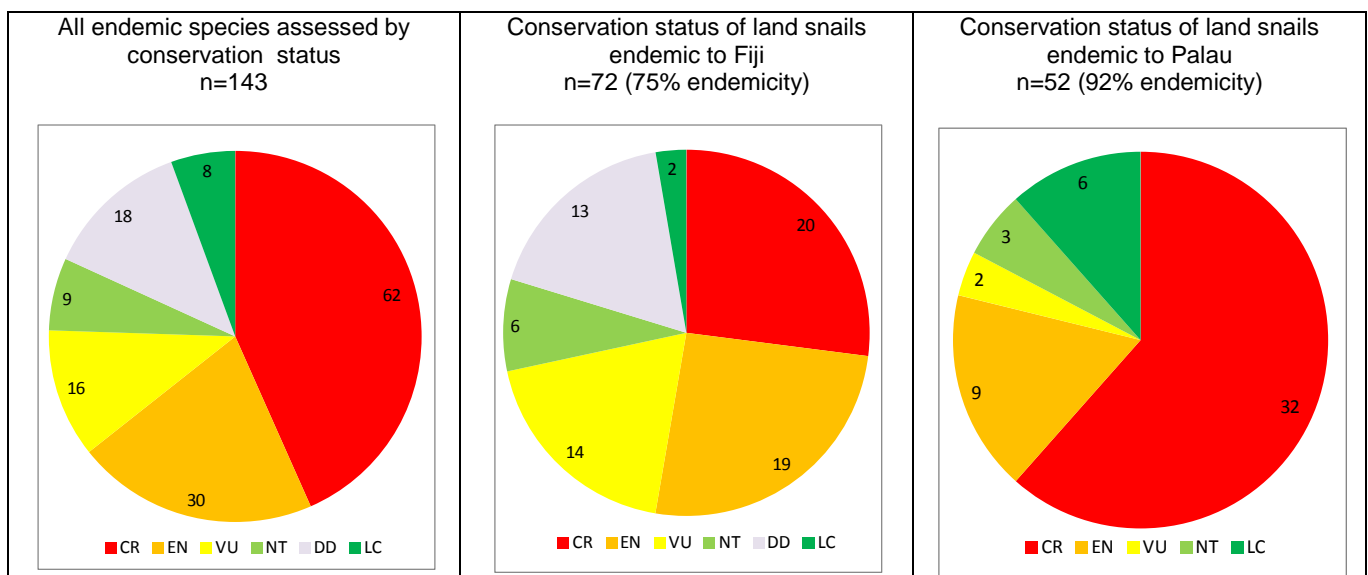
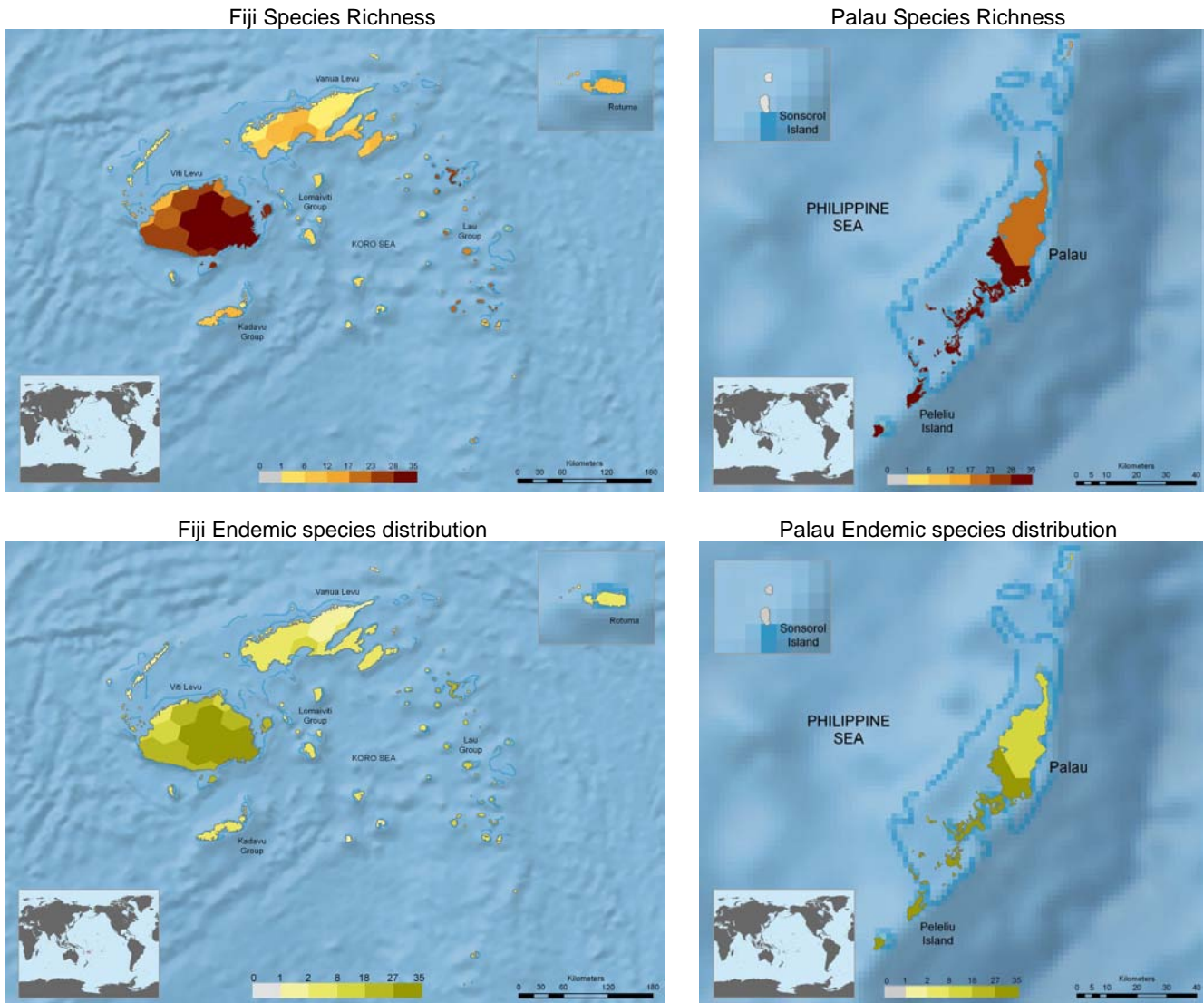


Figure 4: Species richness and endemic species distribution for Fiji and Palau



Distribution by habitat

Of the assessed species, the overwhelming majority are confined to tropical moist forest habitats, particularly lowland forests – see Figure 6. A small proportion of species are found in other habitats, such as shrublands, dry forests and other areas inhabited by humans (e.g. gardens and urban areas). These latter areas are generally inhabited by wider-ranging Least Concern species, which are more tolerant to habitat disturbance and therefore able to survive in a variety of habitats.

Population Trends

Being able to determine a species' population trend is critical to assessing a species' conservation status. Approximately 8% of species assessed are thought to be declining and 6% are considered

stable as seen in Figure 5. No populations were thought to be increasing. However, due to the large number of species for which there are no population data on size or trends, the trends for over three quarters of the snail species assessed are unknown.

Figure 5: Population trends

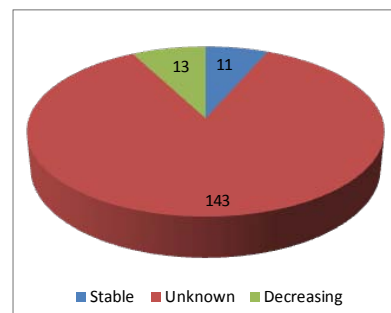
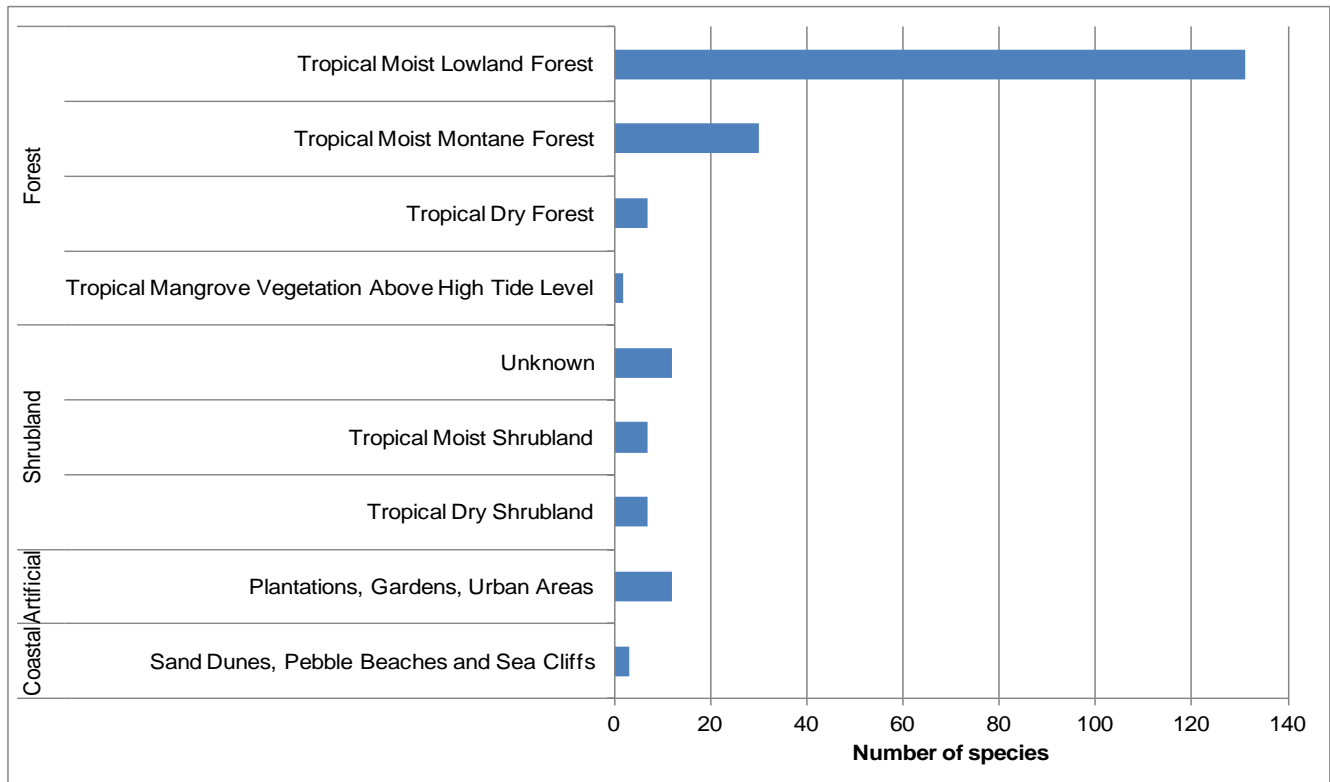


Figure 6: Major habitat types for land snails



Major threats to land snails

The major threats to each species were coded using the IUCN Threats Classification Scheme (see <http://www.iucnredlist.org/technical-documents/classificationschemes>) and are discussed in each species' account. The major threats are summarized in Figure 7 and include the following:

Biological Resource use

Many species of land snail are affected by the destruction, modification or loss of their native forest habitat. This destruction of forests for intentional or unintentional use of timber and forest products (including logging) is a major threat to land snails assessed by this project – just over half of all species (87 species) are affected by biological resource use resulting in a loss of their forest habitat.

Agriculture (non-timber crops, livestock)

Many species are subjected to habitat loss through deforestation for various agricultural activities. Some species are affected by the practice of shifting cultivation of non-timber crops for subsistence purposes; others are affected by the clearing of land for the raising of livestock.

Invasive species

The invasive Giant African snail (*Achatina fulica*) and the Rosy wolf snail (*Euglandina rosea* – see Figure 8) are threats to land snails throughout the Pacific. The Giant African snail breeds prolifically and has the potential to displace indigenous land snails. In an ill-conceived biological control programme initiated in the 1950s, the predatory Rosy wolf snail was introduced to many Pacific Islands to control the Giant African snail, with devastating consequences. Many islands have introduced predatory mammals: e.g. Pacific rat (*Rattus exulans*), black rat (*Rattus rattus*), mouse (*Mus musculus*) and mongooses (*Herpestes fuscus* and *H. auropunctatus*). The Yellow crazy ant, domestic fowl and domestic pigs are also of concern.

Urban and residential development, including tourism

For species that are found in the more densely human populated islands of the region, land clearance and alteration due to developmental pressures are a threat. The construction of roads, building of homes and businesses and associated services require the conversion and often destruction of native forest areas. In Palau, the construction of the paved Compact Road around the large island of Babeldaob has placed the habitat

of many species' under direct threat from forest clearance or modification – this is especially so for species that are restricted to single or few localities. In coastal areas of some islands, the development of tourism services is also a threat.

Other threats: Wars

Land snails recorded from the Palauan islands of Koror (Oreor) and Peleliu (Beliliou) were impacted strongly during the World Wars. Much of the native forest on these islands was destroyed or substantially modified by human habitation during the World War II and post-WWII era, and these impacts were significantly accelerated by bomb-induced destruction.

(5) Research and conservation needs

As part of each species assessment, research and conservation actions were identified for each species: these are summarized in Figures 9 and 10.

The majority of species require further research and survey work to clarify their population size, distribution and trends. This is due in many cases to the lack of recent records of the species and the need to ascertain whether or not a species is in fact still extant - a third of all species assessed as Critically Endangered also carry the tag "Possibly Extinct".

In terms of conservation needs, monitoring of habitat trends and ensuring that habitats are protected are the major priorities. This is to be expected given the severe impacts experienced by the destruction, removal or modification of their forest habitats. The control and/or eradication of invasive species is also seen as a high priority. Again, this reflects the high proportion of land snails that are being negatively impacted by the presence of invasive species.

Figure 7: Major threats to land snail species

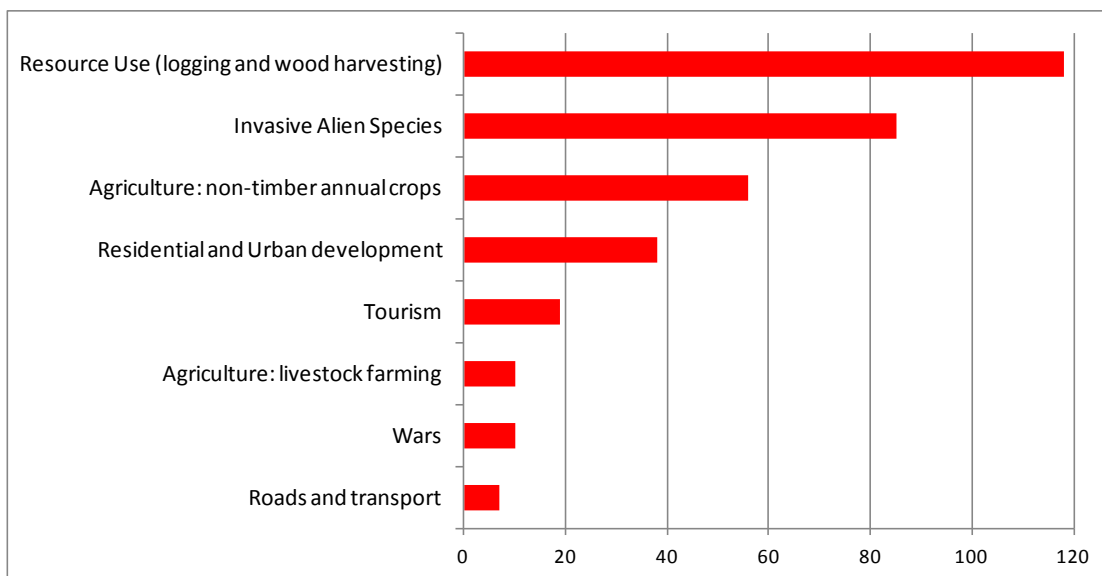


Figure 8: Examples of invasive species



Figure 9: Research and monitoring needs

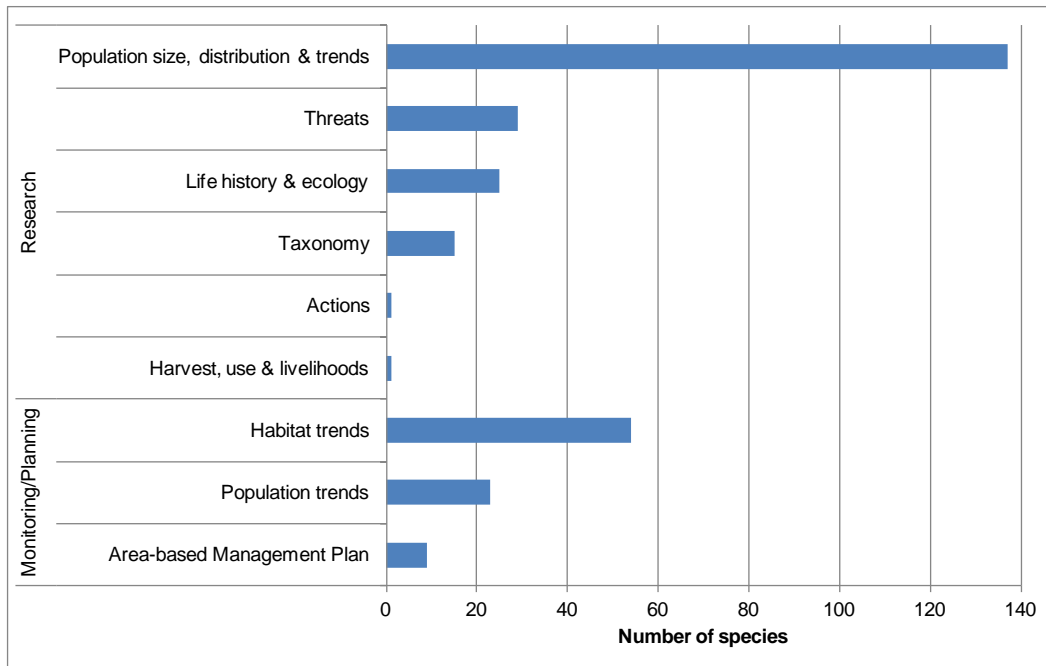
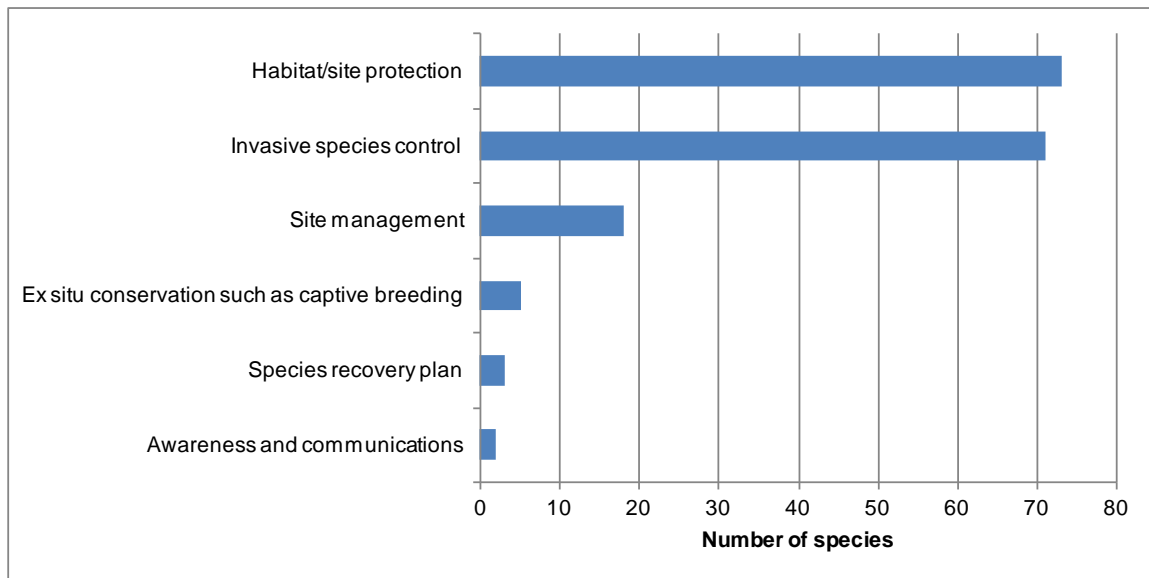


Figure 10: Conservation Actions identified



(6) Conclusions

By analyzing the identified threats, actions can be suggested to enable us to move towards better protection of land snails and their habitats in the Pacific. The following conservation recommendations are suggested, which attempt to address the major threats identified:

Modification of habitat (including biological resource use and agriculture) To protect species from habitat modification and destruction, stakeholders should be educated in sustainable biological resource use and relevant legislation to protect, wisely utilize and conserve habitats should be developed and implemented

Invasive species Accidental introductions (and distribution to different localities) are increasingly likely throughout the Pacific, due to the transport of soil and organic debris (where snail eggs may be present), plants and produce. Future introductions of invasive species should be prevented by ensuring increased biosecurity vigilance at land, air and sea entry points throughout the Pacific.

Urban and residential development Relevant laws and policies, including environmental impact assessments, should be adopted to ensure best practice in any urban, tourism or large-scale residential developments

Application of Results and Future Work

The information gathered for each species is freely available to download from the IUCN Red List website (www.iucnredlist.org). The data in each species account provides a key resource for decision-makers, policy-makers, resource managers, environmental planners and NGOs. It is

anticipated that this information will be used to enable monitoring and conservation action at country, regional and international levels – for example, data can be applied to inform legislation and policies, to identify priority sites for biodiversity conservation and to prepare and implement species recovery plans for threatened land snail species.

In the future, stakeholders should work to:

- Carry out further research on population, threats, ecological requirements, and taxonomy, for species not included in this project, and especially for Critically Endangered (Possibly Extinct) and Data Deficient species, and in areas less well studied. This will enable the production of a comprehensive dataset for land snails across the entire Pacific Islands region.
- Regularly revise the data for land snails assessed, in order to monitor the changing status of populations and to ascertain whether any recommended conservation measures put in place are working
- Examine species' distributions in more detail in order to identify key priority areas for conservation and protection of land snails and their habitats.

This project is the beginning of a process that aims to comprehensively assess species of the Pacific Islands, according to the IUCN Red List Categories and Criteria. This first stage has focused on Red List assessments for freshwater fishes, land snails, and reptiles in the Pacific Islands of Oceania. Future work is planned on other taxonomic groups such as select invertebrates, plants and coral reef fishes in order to create a comprehensive dataset to guide conservation actions in the Pacific Islands.

Appendix 1: Current Red List Status of terrestrial land snails in the Pacific Islands

Order	Family	Species	Previous Year assessed	Previous Red List Category	Previous Red List criteria	Most recent assessment	Current Category	Current Criteria
Architaenioglossa	Diplommatinidae	<i>Diancta macrostoma</i>				2011	VU	B1ab(iii)
Architaenioglossa	Diplommatinidae	<i>Diplommatina alata</i>	1996	DD		2011	CR	B1ab(i,ii,iii)+2ab(i,ii,iii)
Architaenioglossa	Diplommatinidae	<i>Diplommatina aurea</i>	1996	DD		2011	CR	B1ab(iii)+2ab(iii)
Architaenioglossa	Diplommatinidae	<i>Diplommatina crassilabris</i>	1996	DD		2011	CR	B2ab(iii)
Architaenioglossa	Diplommatinidae	<i>Diplommatina gibboni</i>	1996	DD		2011	CR	B1ab(i,ii,iii)+2ab(i,ii,iii)
Architaenioglossa	Diplommatinidae	<i>Diplommatina inflatula</i>	1996	DD		2011	EN	B2ab(iii)
Architaenioglossa	Diplommatinidae	<i>Diplommatina lamellata</i>	1996	DD		2011	NT	
Architaenioglossa	Diplommatinidae	<i>Diplommatina lutea</i>	1996	DD		2011	NT	
Architaenioglossa	Diplommatinidae	<i>Diplommatina pyramis</i>	1996	DD		2011	EN	B1ab(iii)+2ab(iii)
Architaenioglossa	Diplommatinidae	<i>Diplommatina ringens</i>	1996	DD		2011	CR	B1ab(iii)+2ab(iii)
Architaenioglossa	Diplommatinidae	<i>Hungerfordia pelewensis</i>	1996	DD		2011	EN	B1ab(ii,iii)+2ab(ii,iii)
Architaenioglossa	Diplommatinidae	<i>Macropalaina pomatiaeformis</i>				2011	EN	B1ab(ii,iii)+2ab(ii,iii)
Architaenioglossa	Diplommatinidae	<i>Moussonia fuscula</i>				2011	NT	
Architaenioglossa	Diplommatinidae	<i>Palaina albata</i>	1996	DD		2011	CR	B1ab(ii,iii)+2ab(ii,iii)
Architaenioglossa	Diplommatinidae	<i>Palaina chrysalis</i>				2011	DD	
Architaenioglossa	Diplommatinidae	<i>Palaina dimorpha</i>	1996	DD		2011	NT	
Architaenioglossa	Diplommatinidae	<i>Palaina dohrni</i>	1996	DD		2011	not valid	
Architaenioglossa	Diplommatinidae	<i>Palaina godeffroyana</i>				2011	VU	B1ab(ii,iii)
Architaenioglossa	Diplommatinidae	<i>Palaina graeffei</i>				2011	DD	
Architaenioglossa	Diplommatinidae	<i>Palaina martensi</i>				2011	NT	
Architaenioglossa	Diplommatinidae	<i>Palaina moussoni</i>	1996	DD		2011	CR	B1ab(ii,iii)+2ab(ii,iii)
Architaenioglossa	Diplommatinidae	<i>Palaina patula</i>	1996	DD		2011	CR	D

Architaenioglossa	Diplommatinidae	<i>Palaina platycheilus</i>	1996	DD		2011	CR	B1ab(iii)+2ab(iii); D
Architaenioglossa	Diplommatinidae	<i>Palaina pupa</i>	1996	DD		2011	CR	B1ab(iii); D
Architaenioglossa	Diplommatinidae	<i>Palaina pusilla</i>	1996	DD		2011	NE	Not a valid species
Architaenioglossa	Diplommatinidae	<i>Palaina quadrata</i>				2011	DD	
Architaenioglossa	Diplommatinidae	<i>Palaina rubella</i>	1996	DD		2011	CR	B1ab(iii)+2ab(iii); D
Architaenioglossa	Diplommatinidae	<i>Palaina strigata</i>	1996	DD		2011	VU	B1ab(iii)+2ab(iii)
Architaenioglossa	Diplommatinidae	<i>Palaina striolata</i>	1996	DD		2011	CR	B1ab(iii)+2ab(iii)
Architaenioglossa	Diplommatinidae	<i>Palaina subregularis</i>				2011	VU	B1ab(ii,iii)
Architaenioglossa	Diplommatinidae	<i>Palaina taeniolata</i>				1996	DD	
Architaenioglossa	Diplommatinidae	<i>Palaina taviensis</i>				2011	EN	B2ab(ii,iii)
Architaenioglossa	Diplommatinidae	<i>Palaina tuberosa</i>				2011	DD	
Architaenioglossa	Diplommatinidae	<i>Palaina wilsoni</i>	1996	DD		2011	EN	B1ab(iii)+2ab(iii)
Architaenioglossa	Diplommatinidae	<i>Pseudopalaina ascendens</i>				2011	DD	
Architaenioglossa	Diplommatinidae	<i>Pseudopalaina polymorpha</i>				1996	DD	
Architaenioglossa	Diplommatinidae	<i>Pseudopalaina polymorpha</i>				2011	CR	B1ab(iii)+2ab(iii)
Architaenioglossa	Neocyclotidae	<i>Fijiopoma diatreta</i>				2011	VU	B2ab(ii,iii)
Architaenioglossa	Neocyclotidae	<i>Fijiopoma liberata</i>				2011	EN	B1ab(ii,iii)+2ab(ii,iii)
Architaenioglossa	Neocyclotidae	<i>Gonatorhappe intercostata</i>				2011	EN	B1ab(ii,iii)+2ab(ii,iii)
Architaenioglossa	Neocyclotidae	<i>Gonatorhappe lauensis</i>				2011	CR	B1ab(ii,iii)
Architaenioglossa	Neocyclotidae	<i>Gonatorhappe stricta</i>				2011	EN	B2ab(ii,iii)
Architaenioglossa	Pupinidae	<i>Pupina complanata</i>				1996	DD	
Architaenioglossa	Pupinidae	<i>Pupina difficilis</i>	1996	DD		2011	LC	
Cycloneritimorpha	Helicinidae	<i>Palaeohelicina heterochroa</i>				2011	LC	
Cycloneritimorpha	Helicinidae	<i>Pleuropoma pelewensis</i>				2011	LC	
Cycloneritimorpha	Hydrocenidae	<i>Georissa biangulata</i>				1996	DD	
Cycloneritimorpha	Hydrocenidae	<i>Georissa elegans</i>				1996	DD	

Cycloneritimorpha	Hydrocenidae	<i>Georissa laevigata</i>				1996	DD	
Littorinimorpha	Assimineidae	<i>Fijianella calciphila</i>				2011	VU	D2
Littorinimorpha	Assimineidae	<i>Fijianella cornucopia</i>				2011	VU	D2
Littorinimorpha	Assimineidae	<i>Fijianella laddi</i>				2011	VU	B2ab(ii,iii)
Littorinimorpha	Assimineidae	<i>Kubaryia pilikia</i>				2011	CR	B1ab(iii)
Littorinimorpha	Assimineidae	<i>Omphalotropis bifilaris</i>				2011	LC	
Littorinimorpha	Assimineidae	<i>Omphalotropis cheynei</i>				2011	LC	
Littorinimorpha	Assimineidae	<i>Omphalotropis circumlineata</i>				2011	NT	
Littorinimorpha	Assimineidae	<i>Omphalotropis costulata</i>				2011	VU	B1ab(ii,iii)+2ab(ii,iii)
Littorinimorpha	Assimineidae	<i>Omphalotropis hispida</i>				2011	DD	
Littorinimorpha	Assimineidae	<i>Omphalotropis ingens</i>				2011	CR	B1ab(ii)+2ab(ii)
Littorinimorpha	Assimineidae	<i>Omphalotropis layardiana</i>				2011	DD	
Littorinimorpha	Assimineidae	<i>Omphalotropis longula</i>				2011	VU	B2ab(ii,iii)
Littorinimorpha	Assimineidae	<i>Omphalotropis moussoni</i>				2011	LC	
Littorinimorpha	Assimineidae	<i>Omphalotropis parva</i>				2011	LC	
Littorinimorpha	Assimineidae	<i>Omphalotropis rosea</i>				2011	VU	B1ab(ii,iii)+2ab(ii,iii)
Littorinimorpha	Assimineidae	<i>Omphalotropis subsoluta</i>				2011	EN	B1ab(ii,iii)+2ab(ii,iii)
Littorinimorpha	Assimineidae	<i>Omphalotropis zelriolata</i>				2011	NT	
Littorinimorpha	Truncatellidae	<i>Truncatella guerinii</i>				2011	LC	
Stylommatophora	Achatinellidae	<i>Elasmias quadrasii</i>				1996	DD	
Stylommatophora	Achatinellidae	<i>Elasmias apertum</i>				2011	LC	
Stylommatophora	Achatinellidae	<i>Elasmias ovatum</i>				2011	EN	B2ab(iii)
Stylommatophora	Achatinellidae	<i>Lamellidea microstoma</i>				1996	DD	
Stylommatophora	Achatinellidae	<i>Lamellidea oblonga</i>				2011	LC	
Stylommatophora	Achatinellidae	<i>Lamellidea pusilla</i>				2011	LC	
Stylommatophora	Achatinellidae	<i>Lamellidea subcylindrica</i>				1996	DD	

Stylommatophora	Achatinellidae	<i>Tornatellinops ponapensis</i>				1996	DD	
Stylommatophora	Camaenidae	<i>Papustyla pulcherrima</i>				1996	DD	
Stylommatophora	Charopidae	<i>Ba humbugi</i>				2011	EN	B1ab(ii,iii)+2ab(ii,iii)
Stylommatophora	Charopidae	<i>Discocharopa aperta</i>				2011	LC	
Stylommatophora	Charopidae	<i>Himeroconcha fusca</i>				1996	DD	
Stylommatophora	Charopidae	<i>Himeroconcha lamlanensis</i>				1996	DD	
Stylommatophora	Charopidae	<i>Himeroconcha quadrasi</i>				1996	DD	
Stylommatophora	Charopidae	<i>Himeroconcha rotula</i>				1996	DD	
Stylommatophora	Charopidae	<i>Jokajdon callizonus</i>				1996	DD	
Stylommatophora	Charopidae	<i>Jokajdon tumidulus</i>				1996	DD	
Stylommatophora	Charopidae	<i>Kondoconcha othnius</i>				1996	CR	B1+2abcd
Stylommatophora	Charopidae	<i>Kubaryiellus kubaryi</i>				1996	DD	
Stylommatophora	Charopidae	<i>Ladronellum mariannarum</i>				1996	DD	
Stylommatophora	Charopidae	<i>Lagivala minusculus</i>				2011	VU	B1ab(ii,iii)
Stylommatophora	Charopidae	<i>Lagivala vivus</i>				2011	VU	B1ab(ii,iii)
Stylommatophora	Charopidae	<i>Lauopa mbalavuana</i>				2011	CR	B1ab(ii,iii)
Stylommatophora	Charopidae	<i>Libera subcavernula</i>				1996	EX	
Stylommatophora	Charopidae	<i>Libera tumuloides</i>				1996	EX	
Stylommatophora	Charopidae	<i>Maafu thaumasius</i>				2011	CR	B1ab(iii)
Stylommatophora	Charopidae	<i>Mautodontha acuticosta</i>				1996	EX	
Stylommatophora	Charopidae	<i>Mautodontha boraborensis</i>				1996	CR	A1c
Stylommatophora	Charopidae	<i>Mautodontha ceuthma</i>				1996	CR	A1c
Stylommatophora	Charopidae	<i>Mautodontha consimilis</i>				1996	EX	
Stylommatophora	Charopidae	<i>Mautodontha consobrina</i>				1996	EX	
Stylommatophora	Charopidae	<i>Mautodontha maupiensis</i>				1996	EX	
Stylommatophora	Charopidae	<i>Mautodontha parvidens</i>				1996	EX	

Stylommatophora	Charopidae	<i>Mautodontha punctiperforata</i>				1996	EX	
Stylommatophora	Charopidae	<i>Mautodontha saintjohni</i>				1996	EX	
Stylommatophora	Charopidae	<i>Mautodontha subtilis</i>				1996	EX	
Stylommatophora	Charopidae	<i>Mautodontha unilamellata</i>				1996	EX	
Stylommatophora	Charopidae	<i>Mautodontha zebrina</i>				1996	EX	
Stylommatophora	Charopidae	<i>Microcharopa mimula</i>				2011	VU	B2ab(ii,iii)
Stylommatophora	Charopidae	<i>Norfolcicoconch iota</i>				1996	VU	D2
Stylommatophora	Charopidae	<i>Norfolcicoconch norfolkensis</i>				1996	VU	D2
Stylommatophora	Charopidae	<i>Opanara altiapica</i>				1996	CR	B1+2abc
Stylommatophora	Charopidae	<i>Opanara areaensis</i>				1996	CR	A2e, B1+2c
Stylommatophora	Charopidae	<i>Opanara bitridentata</i>				1996	CR	A2e, B1+2c
Stylommatophora	Charopidae	<i>Opanara caliculata</i>				1996	CR	A2e, B1+2c
Stylommatophora	Charopidae	<i>Opanara depasoapicata</i>				1996	CR	A2e, B1+2c
Stylommatophora	Charopidae	<i>Opanara duplicidentata</i>				1996	CR	A2e
Stylommatophora	Charopidae	<i>Opanara fosbergi</i>				1996	CR	A2e, B1+2c
Stylommatophora	Charopidae	<i>Opanara megomphala</i>				1996	CR	A2e, B1+2c
Stylommatophora	Charopidae	<i>Opanara perahuensis</i>				1996	CR	A2e, B1+2c
Stylommatophora	Charopidae	<i>Orangia cookei</i>				1996	EN	A2e, B1+2c
Stylommatophora	Charopidae	<i>Orangia maituatensis</i>				1996	CR	A2e, B1+2c
Stylommatophora	Charopidae	<i>Orangia sporadica</i>				1996	EN	A2e, B1+2c
Stylommatophora	Charopidae	<i>Palikirus cosmetus</i>				1996	DD	
Stylommatophora	Charopidae	<i>Palikirus ponapicus</i>				1996	DD	
Stylommatophora	Charopidae	<i>Palline micramyla</i>				1996	DD	
Stylommatophora	Charopidae	<i>Palline notera</i>	1996	DD		2011	CR	B1ab(i,iii)+2ab(i,iii)
Stylommatophora	Charopidae	<i>Penescosta mathewsi</i>				1996	VU	D2
Stylommatophora	Charopidae	<i>Penescosta sororcula</i>				1996	VU	D2

Stylommatophora	Charopidae	<i>Rhysconcha atanuiensis</i>				1996	VU	D2
Stylommatophora	Charopidae	<i>Rhysconcha variumbilicata</i>				1996	CR	A2e, B1+2c
Stylommatophora	Charopidae	<i>Roimontis tolotomensis</i>				1996	DD	
Stylommatophora	Charopidae	<i>Ruatara koarana</i>				1996	CR	A2e, B1+2c
Stylommatophora	Charopidae	<i>Ruatara oparica</i>				1996	VU	D2
Stylommatophora	Charopidae	<i>Russatus nigrescens</i>				1996	DD	
Stylommatophora	Charopidae	<i>Semperdon heptptychius</i>				1996	LR/lc	
Stylommatophora	Charopidae	<i>Semperdon kororensis</i>	1996	DD		2011	CR	B1ab(iii)+2ab(iii)
Stylommatophora	Charopidae	<i>Semperdon rotanus</i>				1996	DD	
Stylommatophora	Charopidae	<i>Semperdon uncatius</i>	1996	DD		2011	EN	B1ab(i,ii,iii)+2ab(i,ii,iii)
Stylommatophora	Charopidae	<i>Semperdon xyleborus</i>	1996	DD		2011	CR	D
Stylommatophora	Charopidae	<i>Sinployea adposita</i>				2011	VU	B2ab(ii,iii)
Stylommatophora	Charopidae	<i>Sinployea angularis</i>				2011	CR	B1ab(ii,iii)
Stylommatophora	Charopidae	<i>Sinployea canalis</i>				1996	EX	
Stylommatophora	Charopidae	<i>Sinployea decorticata</i>				1996	EX	
Stylommatophora	Charopidae	<i>Sinployea godeffroyana</i>				2011	VU	B1ab(ii,iii)
Stylommatophora	Charopidae	<i>Sinployea harveyensis</i>				1996	EX	
Stylommatophora	Charopidae	<i>Sinployea inermis</i>				2011	VU	B2ab(ii,iii)
Stylommatophora	Charopidae	<i>Sinployea kusaieana</i>				1996	DD	
Stylommatophora	Charopidae	<i>Sinployea lauenis</i>				2011	VU	B1ab(ii,iii)+2ab(ii,iii); D2
Stylommatophora	Charopidae	<i>Sinployea monstrosa</i>				2011	VU	B1ab(ii,iii)
Stylommatophora	Charopidae	<i>Sinployea navutuensis</i>				2011	CR	B1ab(iii)+2ab(iii)
Stylommatophora	Charopidae	<i>Sinployea otareae</i>				1996	EX	
Stylommatophora	Charopidae	<i>Sinployea pitcairnensis</i>				1996	VU	D2
Stylommatophora	Charopidae	<i>Sinployea planospira</i>				1996	EX	
Stylommatophora	Charopidae	<i>Sinployea princei</i>				2011	EN	B1ab(iii)+2ab(iii)

Stylommatophora	Charopidae	<i>Sinployea proxima</i>				1996	EX	
Stylommatophora	Charopidae	<i>Sinployea recursa</i>				2011	VU	D2
Stylommatophora	Charopidae	<i>Sinployea rotumana</i>				2011	EN	B1ab(ii,iii)+2ab(ii,iii)
Stylommatophora	Charopidae	<i>Sinployea rudis</i>				1996	EX	
Stylommatophora	Charopidae	<i>Sinployea tenuicostata</i>				1996	EX	
Stylommatophora	Charopidae	<i>Sinployea youngi</i>				1996	EX	
Stylommatophora	Charopidae	<i>Taipidon anceyana</i>				1996	EX	
Stylommatophora	Charopidae	<i>Taipidon marquesana</i>				1996	EX	
Stylommatophora	Charopidae	<i>Taipidon octolamellata</i>				1996	EX	
Stylommatophora	Charopidae	<i>Trukcharopa trukana</i>				1996	DD	
Stylommatophora	Charopidae	<i>Vatusila kondoi</i>				2011	CR	B1ab(iii)
Stylommatophora	Charopidae	<i>Vatusila nayauana</i>				2011	CR	B1ab(iii)
Stylommatophora	Draparnaudiidae	<i>Draparnaudia anniae</i>				1996	CR	B1+2c
Stylommatophora	Draparnaudiidae	<i>Draparnaudia subnecata</i>				1996	CR	A1c, B1+2c
Stylommatophora	Endodontidae	<i>Aaadonta angaurana</i>	1996	DD		2011	CR	B1ab(iii)+2ab(iii)
Stylommatophora	Endodontidae	<i>Aaadonta constricta</i>	1996	DD		2011	EN	B1ab(i,ii,iii)+2ab(i,ii,iii)
Stylommatophora	Endodontidae	<i>Aaadonta constricta ssp. babelthuapi</i>				2011	CR	B1ab(i,ii,iii)+2ab(i,ii,iii)
Stylommatophora	Endodontidae	<i>Aaadonta constricta ssp. constricta</i>				2011	CR	B1ab(i,ii,iii)+2ab(i,ii,iii)
Stylommatophora	Endodontidae	<i>Aaadonta constricta ssp. komakanensis</i>				2011	CR	B1ab(i,ii,iii)+2ab(i,ii,iii)
Stylommatophora	Endodontidae	<i>Aaadonta fuscozonata</i>	1996	DD		2011	EN	B1ab(ii,iii)+2ab(ii,iii)
Stylommatophora	Endodontidae	<i>Aaadonta fuscozonata ssp. depressa</i>				2011	CR	B1ab(i,ii,iii)+2ab(i,ii,iii)
Stylommatophora	Endodontidae	<i>Aaadonta fuscozonata ssp. fuscozonata</i>				2011	CR	D
Stylommatophora	Endodontidae	<i>Aaadonta irregularis</i>	1996	DD		2011	CR	B2ab(ii,iii)
Stylommatophora	Endodontidae	<i>Aaadonta kinlochi</i>	1996	DD		2011	CR	B2ab(ii,iii)
Stylommatophora	Endodontidae	<i>Aaadonta pelewana</i>	1996	DD		2011	CR	D
Stylommatophora	Endodontidae	<i>Priceconcha tuvuthaensis</i>				2011	CR	B1ab(iii)

Stylommatophora	Endodontidae	<i>Thaumatodon corrugata</i>				2011	CR	B1ab(iii)
Stylommatophora	Endodontidae	<i>Thaumatodon hystricelloides</i>				1996	EN	A2ce
Stylommatophora	Endodontidae	<i>Thaumatodon laddi</i>				2011	VU	D2
Stylommatophora	Endodontidae	<i>Thaumatodon multilamellata</i>				1996	EX	
Stylommatophora	Endodontidae	<i>Thaumatodon spirrhymatum</i>				2011	CR	B1ab(ii,iii)+2ab(ii,iii)
Stylommatophora	Endodontidae	<i>Thaumatodon subdaedalea</i>				2011	EN	B1ab(ii,iii)
Stylommatophora	Endodontidae	<i>Zyzyxdonta alata</i>				2011	VU	D2
Stylommatophora	Euconulidae	<i>Dendrotrochus ponapensis</i>				1996	DD	
Stylommatophora	Euconulidae	<i>Kusaiea frivola</i>				1996	DD	
Stylommatophora	Euconulidae	<i>Lamprocystis denticulata</i>				1996	DD	
Stylommatophora	Euconulidae	<i>Lamprocystis fastigata</i>				1996	DD	
Stylommatophora	Euconulidae	<i>Lamprocystis hornbosteli</i>				1996	DD	
Stylommatophora	Euconulidae	<i>Lamprocystis misella</i>				1996	DD	
Stylommatophora	Euconulidae	<i>Liardetia tenuisculpta</i>				1996	DD	
Stylommatophora	Euconulidae	<i>Palaua babelthuapi</i>				1996	DD	
Stylommatophora	Euconulidae	<i>Palaua margaritacea</i>				1996	DD	
Stylommatophora	Euconulidae	<i>Palaua minor</i>				1996	DD	
Stylommatophora	Euconulidae	<i>Palaua minor</i>				2011	LC	
Stylommatophora	Euconulidae	<i>Palaua ngarduaisi</i>				1996	DD	
Stylommatophora	Euconulidae	<i>Palaua straminea</i>				1996	DD	
Stylommatophora	Euconulidae	<i>Palaua wilsoni</i>				1996	DD	
Stylommatophora	Euconulidae	<i>Ryssota pachystoma</i>				1996	DD	
Stylommatophora	Helicarionidae	<i>Advena campbelli</i>				1996	EX	
Stylommatophora	Helicarionidae	<i>Advena charon</i>				1996	EN	B1+2c
Stylommatophora	Helicarionidae	<i>Buffetia retinaculum</i>				1996	VU	B1, D2
Stylommatophora	Helicarionidae	<i>Coneuplecta turrita</i>				2011	CR	D

Stylommatophora	Helicarionidae	<i>Diastole matafaoi</i>				1996	EX	
Stylommatophora	Helicarionidae	<i>Diastole tenuistriata</i>				1996	VU	D2
Stylommatophora	Helicarionidae	<i>Dolapex amicus</i>				1996	EN	B1+2c
Stylommatophora	Helicarionidae	<i>Iredaleoconcha caporaphe</i>				1996	VU	D2
Stylommatophora	Helicarionidae	<i>Kororia palaensis</i>				2011	LC	
Stylommatophora	Helicarionidae	<i>Lutilodix imitatrix</i>				1996	EN	B1+2c
Stylommatophora	Helicarionidae	<i>Mathewsoconcha belli</i>				1996	EN	B1+2c
Stylommatophora	Helicarionidae	<i>Nancibella quintalia</i>				1996	EX	
Stylommatophora	Helicarionidae	<i>Panulena perrugosa</i>				1996	EX	
Stylommatophora	Helicarionidae	<i>Philonesia filiceti</i>				1996	VU	D2
Stylommatophora	Helicarionidae	<i>Philonesia pitcairnensis</i>				1996	VU	D2
Stylommatophora	Helicarionidae	<i>Pittoconcha concinna</i>				1996	VU	D2
Stylommatophora	Helicarionidae	<i>Quintalia flosculus</i>				1996	EX	
Stylommatophora	Helicarionidae	<i>Quintalia stoddartii</i>				1996	EX	
Stylommatophora	Helicarionidae	<i>Tubuaia fosbergi</i>				1996	VU	D2
Stylommatophora	Orthalicidae	<i>Leucocharis pancheri</i>				1996	CR	B1+2d
Stylommatophora	Orthalicidae	<i>Leucocharis loyaltiensis</i>				1996	EX	
Stylommatophora	Orthalicidae	<i>Leucocharis porphyrocheila</i>				1996	EX	
Stylommatophora	Orthalicidae	<i>Placostylus eddystonensis</i>				1996	VU	A1ab
Stylommatophora	Orthalicidae	<i>Placostylus elobatus</i>				2011	VU	B1ab(iii)
Stylommatophora	Orthalicidae	<i>Placostylus fibratus</i>				1996	VU	A1cde
Stylommatophora	Orthalicidae	<i>Placostylus fulguratus</i>				2011	LC	
Stylommatophora	Orthalicidae	<i>Placostylus garretti</i>				2011	DD	
Stylommatophora	Orthalicidae	<i>Placostylus graeffei</i>				2011	EN	B1ab(iii)
Stylommatophora	Orthalicidae	<i>Placostylus guanensis</i>				2011	EN	B1ab(iii)+2ab(iii)
Stylommatophora	Orthalicidae	<i>Placostylus hoyti</i>				2011	EN	B1ab(iii)

Stylommatophora	Orthalicidae	<i>Placostylus kantavuensis</i>				2011	EN	B1ab(iii)+2ab(iii)
Stylommatophora	Orthalicidae	<i>Placostylus koroensis</i>				2011	CR	B1ab(ii,iii)
Stylommatophora	Orthalicidae	<i>Placostylus malleatus</i>				2011	VU	B1ab(ii,iii)
Stylommatophora	Orthalicidae	<i>Placostylus mbengensis</i>				2011	CR	B1ab(iii)
Stylommatophora	Orthalicidae	<i>Placostylus morosus</i>				2011	LC	
Stylommatophora	Orthalicidae	<i>Placostylus ochrostoma</i>				2011	EN	B1ab(iii)
Stylommatophora	Orthalicidae	<i>Placostylus porphyrostomus</i>				1996	VU	A1c
Stylommatophora	Orthalicidae	<i>Placostylus seemanni</i>				2011	EN	B1ab(iii)+2ab(iii)
Stylommatophora	Orthalicidae	<i>Placostylus subroseus</i>				2011	DD	
Stylommatophora	Partulidae	<i>Eua globosa</i>				2011	CR	B2ab(iii); D
Stylommatophora	Partulidae	<i>Eua zebrina</i>				1996	EN	A2ce
Stylommatophora	Partulidae	<i>Partula affinis</i>				2007	CR	B1ab(ii,iv)+2ab(ii,iv)
Stylommatophora	Partulidae	<i>Partula approximata</i>				1996	EX	
Stylommatophora	Partulidae	<i>Partula arguta</i>				2007	EX	
Stylommatophora	Partulidae	<i>Partula atilis</i>				2007	EX	
Stylommatophora	Partulidae	<i>Partula auraniana</i>				2011	EN	B1ab(iii)
Stylommatophora	Partulidae	<i>Partula aurantia</i>				2007	EX	
Stylommatophora	Partulidae	<i>Partula auriculata</i>				2007	EX	
Stylommatophora	Partulidae	<i>Partula bilineata</i>				2007	EX	
Stylommatophora	Partulidae	<i>Partula callifera</i>				2007	EX	
Stylommatophora	Partulidae	<i>Partula calypso</i>	1996	CR	A2c	2011	CR	B2ab(iii); D
Stylommatophora	Partulidae	<i>Partula candida</i>				2007	EX	
Stylommatophora	Partulidae	<i>Partula carteriensis</i>				2011	DD	
Stylommatophora	Partulidae	<i>Partula castanea</i>				1996	EX	
Stylommatophora	Partulidae	<i>Partula cedista</i>				2007	EX	
Stylommatophora	Partulidae	<i>Partula citrina</i>				2007	EX	

Stylommatophora	Partulidae	<i>Partula clara</i>				2007	CR	B2ab(ii,iv)
Stylommatophora	Partulidae	<i>Partula compacta</i>				1996	EX	
Stylommatophora	Partulidae	<i>Partula coxi</i>				2011	DD	
Stylommatophora	Partulidae	<i>Partula cramptoni</i>				2011	DD	
Stylommatophora	Partulidae	<i>Partula crassilabris</i>				2007	EX	
Stylommatophora	Partulidae	<i>Partula cuneata</i>				2007	EX	
Stylommatophora	Partulidae	<i>Partula cytherea</i>				2007	EX	
Stylommatophora	Partulidae	<i>Partula dentifera</i>				2007	EW	
Stylommatophora	Partulidae	<i>Partula dolichostoma</i>				2007	EX	
Stylommatophora	Partulidae	<i>Partula dolorosa</i>				2007	EX	
Stylommatophora	Partulidae	<i>Partula dorseyi</i>				2011	DD	
Stylommatophora	Partulidae	<i>Partula emersoni</i>	1996	CR	A1e+2ce	2011	CR	D
Stylommatophora	Partulidae	<i>Partula eremita</i>				2007	EX	
Stylommatophora	Partulidae	<i>Partula exigua</i>				2007	EX	
Stylommatophora	Partulidae	<i>Partula faba</i>				2007	EW	
Stylommatophora	Partulidae	<i>Partula filosa</i>				2007	EX	
Stylommatophora	Partulidae	<i>Partula formosa</i>				2007	EX	
Stylommatophora	Partulidae	<i>Partula fusca</i>				2007	EX	
Stylommatophora	Partulidae	<i>Partula garretti</i>				2007	EX	
Stylommatophora	Partulidae	<i>Partula gibba</i>				1996	CR	A2ce
Stylommatophora	Partulidae	<i>Partula guamensis</i>	1996	CR	A2ce	2011	EX	
Stylommatophora	Partulidae	<i>Partula hebe</i>				2007	EW	
Stylommatophora	Partulidae	<i>Partula hyalina</i>				2007	VU	B2ab(ii,iv)
Stylommatophora	Partulidae	<i>Partula imperforata</i>				2007	EX	
Stylommatophora	Partulidae	<i>Partula labrusca</i>				2007	EX	
Stylommatophora	Partulidae	<i>Partula langfordi</i>				1996	CR	A1e+2ce

Stylommatophora	Partulidae	<i>Partula leptochila</i>				2007	EX	
Stylommatophora	Partulidae	<i>Partula leucothoe</i>	1996	CR	A2e	2011	CR	B2ab(iii); D
Stylommatophora	Partulidae	<i>Partula levilineata</i>				2007	EX	
Stylommatophora	Partulidae	<i>Partula levistriata</i>				2007	EX	
Stylommatophora	Partulidae	<i>Partula lugubris</i>				2007	EX	
Stylommatophora	Partulidae	<i>Partula lutea</i>				2007	EX	
Stylommatophora	Partulidae	<i>Partula martensiana</i>				1996	CR	A1ce+2e
Stylommatophora	Partulidae	<i>Partula micans</i>				2011	LC	
Stylommatophora	Partulidae	<i>Partula microstoma</i>				1996	EX	
Stylommatophora	Partulidae	<i>Partula milleri</i>				2011	CR	B1ab(i,ii)+2ab(i,ii); D
Stylommatophora	Partulidae	<i>Partula mirabilis</i>				2007	EW	
Stylommatophora	Partulidae	<i>Partula mooreana</i>				2007	EW	
Stylommatophora	Partulidae	<i>Partula navigatoria</i>				2007	EX	
Stylommatophora	Partulidae	<i>Partula nodosa</i>				2007	EW	
Stylommatophora	Partulidae	<i>Partula otaheitana</i>				2007	CR	B2ab(ii,iii)
Stylommatophora	Partulidae	<i>Partula ovalis</i>				2007	EX	
Stylommatophora	Partulidae	<i>Partula planilabrum</i>				2007	EX	
Stylommatophora	Partulidae	<i>Partula producta</i>				2007	EX	
Stylommatophora	Partulidae	<i>Partula protea</i>				1996	EX	
Stylommatophora	Partulidae	<i>Partula protracta</i>				2007	EX	
Stylommatophora	Partulidae	<i>Partula radiata</i>				2007	EX	
Stylommatophora	Partulidae	<i>Partula radiolata</i>				1996	CR	A2ce, B1+2abcde
Stylommatophora	Partulidae	<i>Partula raiatensis</i>				1996	EX	
Stylommatophora	Partulidae	<i>Partula remota</i>				2007	EX	
Stylommatophora	Partulidae	<i>Partula robusta</i>				2007	EX	
Stylommatophora	Partulidae	<i>Partula rosea</i>				2007	EW	

Stylommatophora	Partulidae	<i>Partula rustica</i>				2007	EX	
Stylommatophora	Partulidae	<i>Partula sagitta</i>				2007	EX	
Stylommatophora	Partulidae	<i>Partula salifana</i>				1996	EX	
Stylommatophora	Partulidae	<i>Partula salifera</i>				2000	EX	
Stylommatophora	Partulidae	<i>Partula similaris</i>				2011	DD	
Stylommatophora	Partulidae	<i>Partula subgonochila</i>				2011	CR	B1ab(iii)
Stylommatophora	Partulidae	<i>Partula suturalis</i>				2007	EW	
Stylommatophora	Partulidae	<i>Partula taeniata</i>				2007	CR	B2ab(ii,iv)
Stylommatophora	Partulidae	<i>Partula thalia</i>				2007	EX	
Stylommatophora	Partulidae	<i>Partula thetis</i>	1996	CR	A1c	2011	CR	B2ab(iii)
Stylommatophora	Partulidae	<i>Partula tohiveana</i>				2007	EW	
Stylommatophora	Partulidae	<i>Partula tristis</i>				2007	EW	
Stylommatophora	Partulidae	<i>Partula turgida</i>				2007	EX	
Stylommatophora	Partulidae	<i>Partula umbilicata</i>				2007	EX	
Stylommatophora	Partulidae	<i>Partula varia</i>				2007	EW	
Stylommatophora	Partulidae	<i>Partula variabilis</i>				1996	EX	
Stylommatophora	Partulidae	<i>Partula vittata</i>				2007	EX	
Stylommatophora	Partulidae	<i>Samoana abbreviata</i>	2000	CR	B1+2cde	2011	CR	B2ab(iii)
Stylommatophora	Partulidae	<i>Samoana attenuata</i>				2007	CR	A2e;B2ab(ii,iv)
Stylommatophora	Partulidae	<i>Samoana bellula</i>				2007	CR	B2ab(ii,iv)
Stylommatophora	Partulidae	<i>Samoana burchi</i>	2007	CR	B2ab(ii,iv)	2011	CR	B2ab(iii)
Stylommatophora	Partulidae	<i>Samoana conica</i>				1996	EN	A2ce
Stylommatophora	Partulidae	<i>Samoana cramptoni</i>				2011	CR	D
Stylommatophora	Partulidae	<i>Samoana decussatula</i>				2007	CR	B2ab(ii,iv)
Stylommatophora	Partulidae	<i>Samoana diaphana</i>				2011	EN	B2ab(i,ii,iii)
Stylommatophora	Partulidae	<i>Samoana dryas</i>				2007	CR	B2ac(ii,iii)

Stylommatophora	Partulidae	<i>Samoana fragilis</i>				2000	CR	B1+2cd
Stylommatophora	Partulidae	<i>Samoana hamadryas</i>				2007	CR	B2ab(ii,iii)
Stylommatophora	Partulidae	<i>Samoana inflata</i>				2007	EX	
Stylommatophora	Partulidae	<i>Samoana jackieburchi</i>				2007	EX	
Stylommatophora	Partulidae	<i>Samoana magdalinae</i>				2007	DD	
Stylommatophora	Partulidae	<i>Samoana margaritae</i>				2007	VU	D2
Stylommatophora	Partulidae	<i>Samoana meyeri</i>				2011	CR	B2ab(ii,iii)
Stylommatophora	Partulidae	<i>Samoana oreas</i>				2007	CR	B2ab(ii,iii)
Stylommatophora	Partulidae	<i>Samoana strigata</i>				2007	CR	B2ab(ii,iv)
Stylommatophora	Partulidae	<i>Samoana thurstoni</i>				2000	EN	A1c+2ce
Stylommatophora	Punctidae	<i>Christianoconcha quintalia</i>				1996	VU	D2
Stylommatophora	Pupillidae	<i>Nesopupa eapensis</i>				1996	DD	
Stylommatophora	Pupillidae	<i>Nesopupa ponapica</i>				1996	DD	
Stylommatophora	Pupillidae	<i>Nesopupa quadrasi</i>				1996	DD	
Stylommatophora	Rhytididae	<i>Delos gardineri</i>				2011	CR	B1ab(i,ii,iii)+2ab(i,ii,iii)
Stylommatophora	Rhytididae	<i>Delos oualanensis</i>				1996	DD	
Stylommatophora	Rhytididae	<i>Ouagapia perryi</i>				2011	EN	B2ab(ii,iii)
Stylommatophora	Rhytididae	<i>Ouagapia ratusukuni</i>				2011	CR	B1ab(ii,iii)
Stylommatophora	Succineidae	<i>Succinea guamensis</i>				1996	DD	
Stylommatophora	Succineidae	<i>Succinea philippinica</i>				1996	DD	
Stylommatophora	Succineidae	<i>Succinea philippinica</i>				2011	DD	
Stylommatophora	Succineidae	<i>Succinea piratarum</i>				1996	EN	A2c
Stylommatophora	Succineidae	<i>Succinea quadrasi</i>				1996	EN	A2e
Stylommatophora	Succineidae	<i>Succinea rotumana</i>				2011	CR	B1ab(ii,iii)
Stylommatophora	Trochomorphidae	<i>Videna electra</i>	1996	DD		2011	VU	B1ab(iii)+2ab(iii)
Stylommatophora	Trochomorphidae	<i>Videna oleacina</i>	1996	DD		2011	EN	B1ab(iii)+2ab(iii)

Stylommatophora	Trochomorphidae	<i>Videna pagodula</i>	1996	DD		2011	CR	B1ab(ii,iii)+2ab(ii,iii)
Stylommatophora	Trochomorphidae	<i>Videna pumila</i>	1996	DD		2011	CR	D
Stylommatophora	Valloniidae	<i>Pupisoma orcula</i>				2000	LR/lc	
Stylommatophora	Zonitidae	<i>Brazieria entomostoma</i>				1996	DD	
Stylommatophora	Zonitidae	<i>Brazieria erasa</i>				1996	DD	
Stylommatophora	Zonitidae	<i>Brazieria lutaria</i>				1996	DD	
Stylommatophora	Zonitidae	<i>Brazieria minuscula</i>				1996	DD	
Stylommatophora	Zonitidae	<i>Brazieria obesa</i>				1996	DD	
Stylommatophora	Zonitidae	<i>Brazieria velata</i>				1996	DD	
Stylommatophora	Zonitidae	<i>Hongolua kondorum</i>				1996	DD	
Stylommatophora	Zonitidae	<i>Kondoa kondorum</i>				1996	DD	
Stylommatophora	Zonitidae	<i>Trochomorpha abrochroa</i>				2011	VU	B1ab(ii,iii)
Stylommatophora	Zonitidae	<i>Trochomorpha accurata</i>				2011	VU	B1ab(ii,iii)
Stylommatophora	Zonitidae	<i>Trochomorpha albostriata</i>				2011	EN	B1ab(ii,iii)+2ab(ii,iii)
Stylommatophora	Zonitidae	<i>Trochomorpha apia</i>				1996	EN	A2ce
Stylommatophora	Zonitidae	<i>Trochomorpha approximata</i>				1996	DD	
Stylommatophora	Zonitidae	<i>Trochomorpha carolinae</i>				1996	DD	
Stylommatophora	Zonitidae	<i>Trochomorpha conoides</i>				1996	DD	
Stylommatophora	Zonitidae	<i>Trochomorpha contigua</i>				1996	DD	
Stylommatophora	Zonitidae	<i>Trochomorpha corallina</i>				2011	NT	
Stylommatophora	Zonitidae	<i>Trochomorpha depressostriata</i>				2011	DD	
Stylommatophora	Zonitidae	<i>Trochomorpha fessonina</i>				2011	NT	
Stylommatophora	Zonitidae	<i>Trochomorpha kambarae</i>				2011	CR	B1ab(ii,iii)
Stylommatophora	Zonitidae	<i>Trochomorpha kantavuensis</i>				2011	DD	
Stylommatophora	Zonitidae	<i>Trochomorpha kuesteri</i>				1996	DD	
Stylommatophora	Zonitidae	<i>Trochomorpha latimarginata</i>				2011	DD	

Stylommatophora	Zonitidae	<i>Trochomorpha lüdersi</i>				2011	NT	
Stylommatophora	Zonitidae	<i>Trochomorpha merzianoides</i>				2011	DD	
Stylommatophora	Zonitidae	<i>Trochomorpha moalensis</i>				2011	CR	B1ab(ii,iii)
Stylommatophora	Zonitidae	<i>Trochomorpha nigrifella</i>				1996	DD	
Stylommatophora	Zonitidae	<i>Trochomorpha planoconus</i>				2011	CR	B1ab(ii,iii)+2ab(ii,iii)
Stylommatophora	Zonitidae	<i>Trochomorpha tavinniensis</i>				2011	EN	B1ab(ii,iii)+2ab(ii,iii)
Stylommatophora	Zonitidae	<i>Trochomorpha transarata</i>				2011	EN	B1ab(ii,iii)+2ab(ii,iii)
Stylommatophora	Zonitidae	<i>Trochomorpha tumulus</i>				2011	DD	
Stylommatophora	Zonitidae	<i>Trochomorpha tuvuthae</i>				2011	CR	B1ab(iii)

Note: Assessments carried out in 1996 and 2000 used the previous Red List Categories and Criteria (Version 2.3) and are therefore out-of-date