

Dwarf Japanese Knotweed

(Fallopia japonica var. compacta)



Habitat: Terrestrial. Common in urban areas, particularly on waste land, railways, roadsides and riverbanks



Family name: Polygonaceae

Native to: Japan, Taiwan, Korea, northern China

Description: Native to Japan and parts of South East Asia, herbaceous perennial plant growing to 1–1.2 m tall, with strong, extensively spreading rhizomes forming large clonal colonies. In it's native environment it can be found growing on the side of volcanic mountains and has a very hardy perennial growth cycle.



Dwarf Japanese knotweed and its relatives are now widely distributed across Ireland and is a major management concern for public authorities and private property owners.

Reproduction: Spreads variously through fragments of rhizome or stem.

Dwarf Japanese knotweed - (*Fallopia japonica var. compacta*) is closely related to Japanese knotweed - (*Fallopia japonica*) and Giant knotweed - (*Fallopia japonica*) which are both gynodioecious, with male and female (*male sterile*) flowers on separate plants.



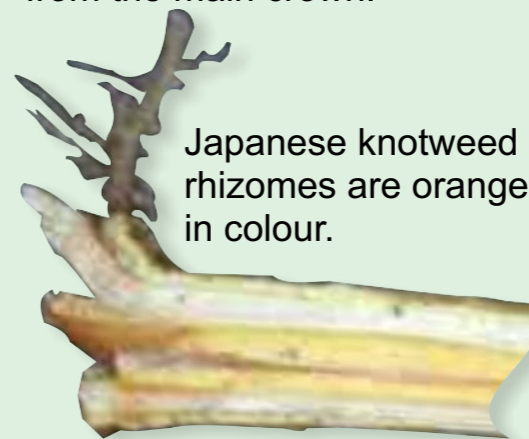
Flowers are small, produced in late summer or early autumn on short, dense panicles up to 10 cm long. Japanese knotweed is not known to produce viable seeds.

In late autumn, brown, brittle dead stems mark where knotweed locations exist



Roots and Rhizome:

Roots can grow up to 3 m deep and up to 7 m laterally from the main crown.



Japanese knotweed rhizomes are orange in colour.



New plants can regenerate from fragments of rhizomes as small as a fingernail.

Knotweed Identification Guide

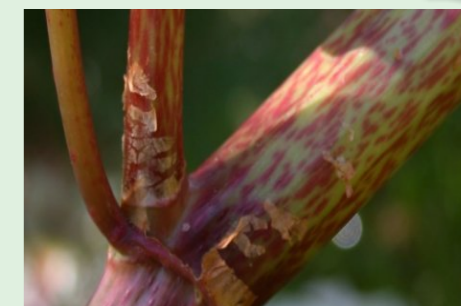
	Giant knotweed (<i>Fallopia sachalinensis</i>)	Bohemian knotweed (<i>Fallopia x bohemica</i>)	Japanese knotweed (<i>Fallopia japonica</i>)	Japanese knotweed (<i>Fallopia japonica var. compacta</i>)	Himalayan knotweed (<i>Persicaria wallichii</i>)
Leaf	15 - 40cm	Up to 23cm	10 - 17cm	5 - 8cm	10 - 20cm
Flower					
Stem					
Plant Size	4m to >5m tall	2m to >4m tall	1.5m to >3m tall	1m to <1.5m tall	2m to >3m tall
Leaf Size L/W	15cm to 40cm 2/3 as wide	12cm to 23cm 2/3 as wide	10cm to 17cm 2/3 as wide	5cm to 8cm 2/3 as wide	10cm to 20cm 1/2 as wide
Sex	Perfect and fertile, usually produces seed	Female or Perfect, occasionally produces seed	Female or Perfect (rare), occasionally produces seed	Female or Perfect (rare), occasionally produces seed	Perfect and fertile, usually produces seed
Flower Colour & Arrangement	Green-white to cream-white with compact, drooping arrangement	Green-white to cream-white with erect or loose, drooping arrangement	Green-white to cream-white with a loose, drooping arrangement	Pink-white with erect or loose, drooping arrangement	Pinkish-white to pink with a loose, spreading arrangement

Leaves grow in an alternate zig-zag pattern on the stem.



Spade shaped leaves with flat stem base.

Stem: Hollow, mostly green with red mottling and banding.



Japanese Knotweed Crown

