

THE JAPAN FOUNDATION

2019 - 2020

ANNUAL REPORT

Cultivating friendship and ties between Japan and the world

Through culture, language and dialogue, the Japan Foundation creates global opportunities to foster friendship, trust and mutual understanding.

The Japan Foundation is Japan's only institution dedicated to carrying out comprehensive international cultural exchange programs throughout the world. The three major focuses of our activities are Arts and Cultural Exchange, Japanese-Language Education Overseas, and Japanese Studies and Intellectual Exchange. The Japan Foundation has a global network consisting of the Tokyo Headquarters, the Kyoto Office, two affiliated organizations (the Japan Foundation Japanese-Language Institute, Urawa; and the Japan Foundation Japanese-Language Institute, Kansai) and 25 overseas offices (including two Japan Foundation Asia Center Liaison Offices). We are working to facilitate exchange in a variety of fields with the aim of further deepening mutual understanding and ties between Japanese people and the world.

Japanese-Language Education Overseas

Teaching the Japanese language to people outside Japan helps to increase their interest in and understanding of Japan. We work to enhance Japanese-language learning environments around the world to provide more people with opportunities to study Japanese.



Arts and Cultural Exchange

Coming into contact with arts and cultures from other countries generates and stimulates people's interest and empathy beyond language barriers. By introducing diverse aspects of Japanese arts and culture to people around the world, we bring people closer together.

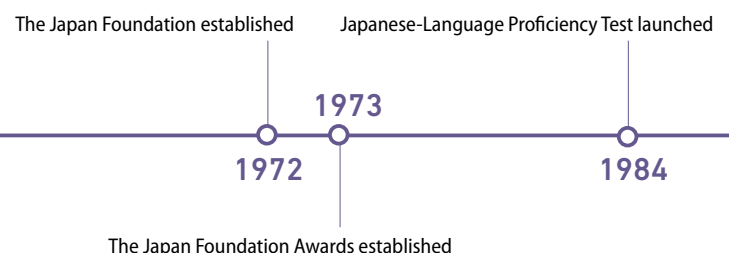
FIELDS

The Japan Foundation develops programs in three different fields—Arts and Cultural Exchange, Japanese-Language Education Overseas, and Japanese Studies and Intellectual Exchange.

Japanese Studies and Intellectual Exchange

The enhancement of Japanese studies overseas will lead to deeper mutual understanding between Japan and other countries. The Japan Foundation also promotes intellectual exchange through symposia and collaborative projects pertinent to global issues.

HISTORY



The Japan Foundation takes initiatives in planning and organizing exhibitions, stage performances and international conferences. We also create programs that invite cultural leaders to Japan to foster networking and provide hands-on experiences in Japan.

The Japan Foundation provides funding for people actively engaged in cultural exchange, and provides grants for cultural exchange by making available tools, opportunities and venues that facilitate exchange activities.

ORGANIZE

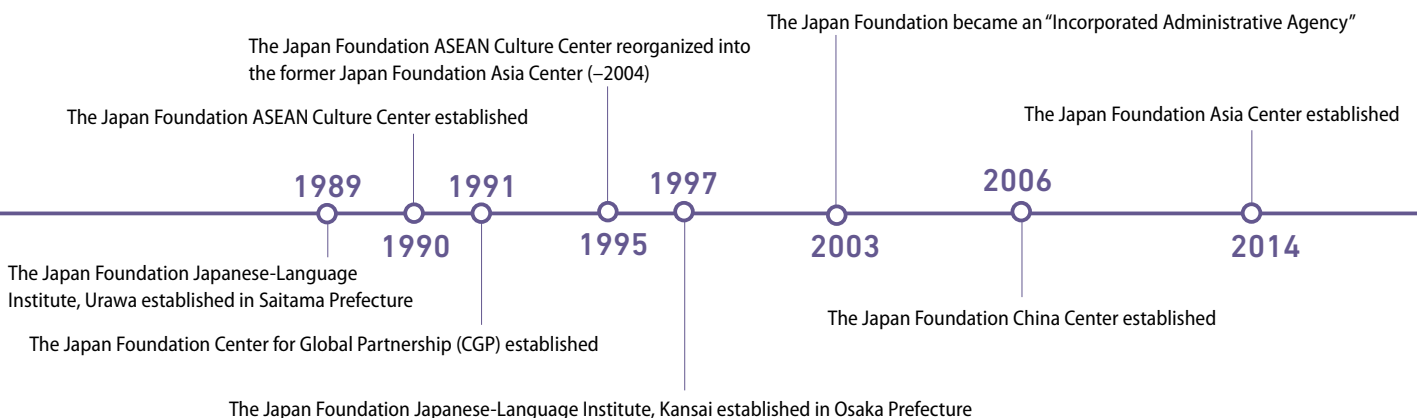
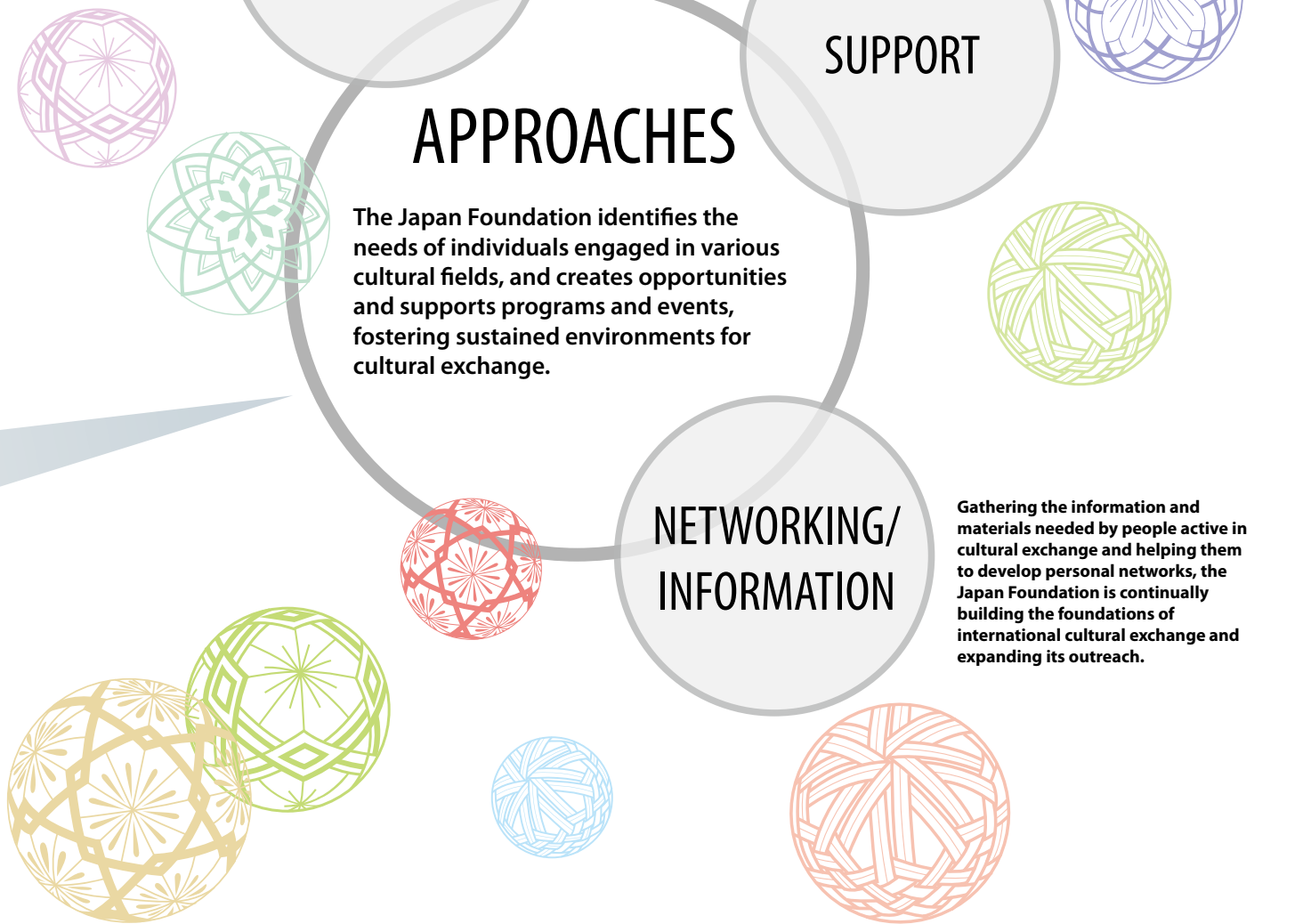
SUPPORT

APPROACHES

The Japan Foundation identifies the needs of individuals engaged in various cultural fields, and creates opportunities and supports programs and events, fostering sustained environments for cultural exchange.

NETWORKING/
INFORMATION

Gathering the information and materials needed by people active in cultural exchange and helping them to develop personal networks, the Japan Foundation is continually building the foundations of international cultural exchange and expanding its outreach.





THE JAPAN FOUNDATION

ANNUAL REPORT 2019-2020

Contents

- P1 About the Japan Foundation
- P4 Message from the President
- P5 Japan 2019
- P7 Asia in Resonance 2019
- P9 PICK UP FY2019

The Activities of the Japan Foundation

- P11 Culture: Arts and Cultural Exchange
- P15 Language: Japanese-Language Education Overseas
- P19 Dialogue: Japanese Studies and Intellectual Exchange
- P23 The Japan Foundation Asia Center
- P26 Other Initiatives

Data

Program Activity Summaries

- P27 Summary of Arts and Cultural Exchange Programs
- P28 Summary of Japanese-Language Education Overseas Programs
- P29 Summary of Japanese Studies and Intellectual Exchange Programs
- P30 Summary of the Japan Foundation Asia Center Programs
- P31 Financial Cooperation from the Private Sector
- P33 Financial Statements
- P36 The Japan Foundation's Global Network
- P37 Committees / Organization
- P38 Resources

Message from the President

I assumed the position of President of the Japan Foundation in October 2020.

Ever since its establishment in 1972, the Japan Foundation has played a key role in promoting cultural diplomacy for nearly half a century. It is a great pleasure and honor for me to be able to serve as president of the Japan Foundation, and I am determined to exert every effort to fulfill my responsibility.

I have been involved in various fields and regions since joining the Ministry of Foreign Affairs in 1977. I was ambassador to both Switzerland and Italy and had the opportunity to be directly involved in the planning and implementation of diverse cultural and artistic events, beginning with programs to commemorate the 150th anniversary of diplomatic relations between these two countries and Japan as well as the Milan Expo 2015. During this time, I was able to witness first-hand outstanding Japanese culture and art that filled countless people with tremendous joy and excitement that elevated their respect for Japan and thereby served as a valuable asset for Japan's diplomacy.

Meanwhile, in my last job as a public servant, I was involved in negotiations with 11 countries as Japan's chief negotiator for the Trans-Pacific Partnership (TPP). Although negotiations turned difficult when the United States announced its withdrawal and the outlook for the TPP became uncertain, I believe a final agreement could be ultimately reached thanks to the trust in Japan among the other participating countries. I am convinced this sense of trust is not simply because Japan's economy is large but rather because it is underpinned by respect for Japan's long history, culture and high technological capabilities.

The Japan Foundation has become a major force in promoting Japan's soft power diplomacy and nurturing ties between Japan and the world, with a focus on its three major fields consisting of Arts and Cultural Exchange, Japanese-Language Education Overseas, and Japanese Studies and Intellectual Exchange.

In 2019, which marked the beginning of Japan's Reiwa era, to further strengthen cultural ties with important regions and countries the Japan Foundation held two large-scale cultural programs, *Asia in Resonance 2019*, a cultural exchange festival between Japan and Southeast Asia, and *Japan 2019* in the United States.

With the growing importance of Japanese-language education overseas due to the increased acceptance of foreign workers under the residency status of Specified Skilled Worker newly introduced by the Japanese government, the Japan Foundation developed the Japan Foundation Basic Test for Japanese (JFT-Basic) to measure Japanese-language skills needed for communication in daily life and work situations in Japan. This test was held in the Philippines, Indonesia, Cambodia, Nepal, Mongolia and Myanmar.

Since the start of 2020, the global spread of COVID-19 has forced the cancellation of numerous programs involving the movement of people across national borders and the gathering of large numbers of people. This has had an enormous impact on the activities of the Japan Foundation. Nonetheless, under the current circumstances where exchanges and cooperation between countries are stagnating, I believe it is more important than ever before to carry out proactive initiatives to maintain and further develop ties between Japan and the world through culture.

With an eye toward the milestone of its 50th anniversary in 2022, the Japan Foundation intends to actively undertake programs such as strengthening online cultural exchange programs matched to a new international environment and social conditions.

I look forward to your continued understanding and support.

UMEMOTO Kazuyoshi

President

The Japan Foundation

October 2020





Japan 2019

Following the success of *Japonismes 2018: les âmes en résonance*, an event that showcased Japanese arts and culture in France, the Japan Foundation held *Japan 2019* in the United States this fiscal year from March to December 2019 to introduce Japanese arts and culture. Besides eight *Japan 2019* Official Program events held mainly in New York and Washington, D.C., there were a total of 138 certified *Japan 2019* Associated Program events planned through a variety of initiatives in regions across the United States. Based on the numerous past exchanges held over long years, experts from both Japan and the United States combined their talents to create high-quality exhibitions and stage performances that stirred the emotions of audiences. The total number of visitors to all *Japan 2019* programs exceeded 1.29 million.

Eight Official Program Events



The Life of Animals in Japanese Art

This exhibition introduced a variety of animal expressions deeply connected to Japanese culture and life through more than 300 works such as paintings, sculptures, lacquer art, ceramic art, metalwork, cloisonné enamel and woodblock prints, from 5th century *Haniwa* to contemporary works. This exhibition was selected as one of The Best Art of 2019 by *The Wall Street Journal*.

Period/Venues:
June 2 – August 18, 2019
National Gallery of Art, Washington D.C.
September 22 – December 8, 2019
Los Angeles County Museum of Art



The Tale of Genji: A Japanese Classic Illuminated

This special exhibition marked the opening of *Japan 2019*. The exhibition introduced the world of *The Tale of Genji* through 135 selected items (including two National Treasures and nine Important Cultural Properties) such as calligraphy, picture albums, handscrolls, hanging scrolls and folding screens.

Period: March 5 – June 16, 2019
Venue: The Metropolitan Museum of Art (New York)



Photo by David Brichford; courtesy of the Cleveland Museum of Art

Shinto: Discovery of the Divine in Japanese Art

This event exhibited approximately 125 precious works (including approximately 20 Important Cultural Properties) such as paintings and sculptures as well as ritual masks and costumes used in Shinto rites from the Heian to Edo periods. This was the first large Shinto-themed exhibition held in the United States in 43 years.

Period: April 9 – June 30, 2019
Venue: The Cleveland Museum of Art (Ohio State)



Japan Day 2019 @ Central Park

Small live performances were held by WagakkiBand and rock musician KAI YOSHIHIRO BAND at this once-per-year outdoor event that celebrated its 13th year.

Date: May 12, 2019

Venue: Bandshell area, Central Park (New York)



JAPAN NIGHT Concert

On the night of Japan Day, there were live performances at JAPAN NIGHT by HYDE & WagakkiBand with a special performance by calligrapher Sisyu & WagakkiBand and MISIA with special guest Puffy AmiYumi.

Date: May 12, 2019

Venues: PlayStation Theater/Sony Hall (New York)

MIYAGI Satoshi's *Antigone* (right)

This was the first time the Park Avenue Armory invited a stage production by a Japanese director. This Greek tragedy *Antigone*, directed by MIYAGI Satoshi and produced by Shizuoka Performing Arts Center (SPAC), was performed 12 times. It was selected by *TIME* magazine as The 10 Best Theater Performances of 2019.

Period: September 25 – October 6, 2019

Venue: Park Avenue Armory (New York)

Sugimoto Bunraku Sonezaki Shinju (bottom)

Sugimoto Bunraku Sonezaki Shinju made its production premiere in the United States at the opening of the White Light Festival at Lincoln Center, the world's largest comprehensive performing arts facility.

Period: October 19 - 22, 2019

Venue: Rose Theater, Jazz at Lincoln Center's Frederick P. Rose Hall (New York)



Photo: Stephanie Berger



© ONO Yuji



© TAKEUCHI Naoko · PNP / Production Committee of "Pretty Guardian Sailor Moon" The Super Live

National Cherry Blossom Festival Performances

KAWAI Ikuko Ensemble and traditional Japanese instruments, MOCHIZUKI Yusaku (Mochi) with video and juggling, and the 2.5-Dimensional Musical "Pretty Guardian Sailor Moon" The Super Live performed at the opening ceremony of the National Cherry Blossom Festival held each spring in the U.S. capital.

Period: March 22-24, 2019

Venues: Warner Theatre/Freer Gallery of Art (and other venues in Washington, D.C.)



ASIA IN RESONANCE

響きあうアジア 2019

From March to December 2019, the Japan Foundation Asia Center held *Asia in Resonance 2019* as a series of events in Japan and Southeast Asia to widely introduce its various cultural exchange programs. The broad range of special events, which were created through mutual interest in each other's cultures, included cross-border productions of stage performances and films as well as a special international friendly football match between the "ASIAN ELEVEN" team of selected Southeast Asian players against a team from Japan and a NIHONGO Partners symposium. The total of 24 main programs alone attracted approximately 20,000 people and there were 1,350 media reports on the events. This festival reflected back on the achievements of the interactive exchanges implemented by the Japan Foundation Asia Center over the past five years and also become the starting point for further deepening relations between Japan and Southeast Asia.



Photo: FUJIMOTO Fumiaki

Asia in Resonance 2019 Gala Concert

Approximately 80 musicians representing eight professional orchestras in Vietnam, Thailand, the Philippines, Indonesia and Myanmar were invited to form a multinational orchestra together with Japanese musicians. With KOBAYASHI Ken-ichiro serving as conductor, this multinational orchestra performed energetic and passionate Asian sounds.

Date: July 1, 2019

Venue: Tokyo Metropolitan Theatre, Concert Hall



Photo: KAMIYAMA Yosuke

DANCE DANCE ASIA—Crossing the Movements in Tokyo 2019

Launched in 2014, DANCE DANCE ASIA aspires to encourage exchanges with dancers and creators within Asia and create new culture. Together with a multinational team of up-and-coming dancers, these artists presented exciting works that fused diverse artistic expression, technique and music.

Period: July 12-14, 2019

Venue: Tokyo Metropolitan Theatre, Theatre West



ASEAN-Japan Music Festival 2019 in VIETNAM —prayer for peace—

Produced by Japan-Vietnam Special Ambassador SUGI Ryotaro, who is also Special Ambassador for Japan and ASEAN, the festival featured passionate performances by singers representing Japan, Vietnam, Brunei, Indonesia, Laos and Myanmar.

Date: July 28, 2019

Venue: Vietnam National Convention Center



Photo: KONO Yurika



©bozzo

SETAN JAWA – A Silent Film with a Live 3D Sound Concert

Setan Jawa, a silent film directed by Indonesian film director Garin Nugroho, was screened with an accompanying live music performance. This was the world premiere of a 3D sound concert version with a co-performance by sound designer MORINAGA Yasuhiro and KOM_I, vocalist of Wednesday Campanella.

Date: July 2, 2019
Venue: Yurakucho Asahi Hall

Pratthana – A Portrait of Possession

This was a stage adaptation of a novel by Uthis Haemamool, a writer at the forefront of Thai contemporary literature, that was staged with OKADA Toshiki's script and direction with TSUKAHARA Yuya's scenography. This was the first performance in Japan following performances in Bangkok and Paris.

Period: June 27 – July 7, 2019
Venue: Tokyo Metropolitan Theatre, Theatre East

The Breathing of Maps: Transformations of the Geo-Body

This program was a reconstruction of the exhibition entitled *The Breathing of Maps* held at the Yamaguchi Center for Arts and Media [YCAM] from December 2018 through March 2019. Through exhibitions, lecture performances and symposia, this event considered the "present" and "future" of culture in Southeast Asia and contemporary art in the Asia-Pacific region.

Period: July 10 – July 15, 2019
Venue: Tokyo Metropolitan Theatre, Gallery 1



MASTERS OF SOUTHEAST ASIAN CINEMA

This was a special screening and symposium of Southeast Asian films. At the symposium, guests from Japan and overseas discussed the international human resources needed in the film field and the possibilities of international collaboration while also introducing case studies.

Period: July 3 – July 10, 2019
Venues: [Film Screening] Yurakucho Subaru-za
[Symposium] Tokyo Metropolitan Theatre, Gallery 1



Photo: TOMITA Ryohei



©JFA

International Friendly Football Match, JapaFunCup

U-18 players selected from 11 Southeast Asian countries formed "ASIAN ELEVEN" as the most diverse team in Asia and played a match against U-18 players chosen from each prefecture in Tohoku. This match was held as the culmination of the football athlete training program between Southeast Asian countries and Japan that has been implemented since 2014.

Date: June 22, 2019
Venue: J-Village Stadium (Fukushima Prefecture)



International Symposium "Japanese-Language Education Amid Fast Growth of Foreign Workers in Japan -Views Based on Experiences of the NIHONGO Partners Program"

In this international symposium, past participants of the NIHONGO Partners Program, local Japanese-language teachers and guests involved in Japanese-language education and multicultural coexistence discussed about the achievements of the NIHONGO Partners Program during the past five years as well as its future prospects.

Date: June 27, 2019
Venue: NIKKEI Hall

PICK UP FY 2019



Large Japanese Film Festival Held in India



Weathering With You director SHINKAI Makoto and the overflowing audience

A large Japanese Film Festival was held in seven major cities* across India from September 2019 to February 2020. The festival screened 30 films, mainly new and excellent works, and attracted around 36,000 visitors. At the festival's opening in New Delhi, the new anime film *Weathering With You*, which had just been released in Japan in late July 2019, made its premiere screening with director SHINKAI Makoto taking the podium. The enthusiastic welcome of director SHINKAI from local fans was widely covered by major local media that included *The Times of India*. The film festival also received coverage in Japan, where it was reported on by NHK News *Ohayo Nippon* and *Kokusai Hodo*. Following its premiere screening, *Weathering With You* became the first Japanese original anime film to be commercially screened in theaters in 39 cities across India.

*Seven major cities (Delhi, Gurgaon, Chennai, Guwahati, Bangalore, Mumbai and Kolkata)



The Japan Foundation Test for Basic Japanese (JFT-Basic) Launched

The Japan Foundation Test for Basic Japanese (JFT-Basic) was commenced in line with the residency status of "Specified Skilled Worker" newly established by the Japanese government in April 2019. The aim of the test is to measure the Japanese-language proficiency needed by foreign nationals about to reside in Japan mainly for work, to communicate in everyday life situations. This is a computer-based test that evaluates Japanese-language competence needed to acquire "Specified Skilled Worker (i)" in accordance with the concepts of the Common European Framework of Reference for Languages (CEFR) and the JF Standard for Japanese-Language Education. In FY2019, a total of 7,971 people took the test in nine cities in six countries in Asia.



Former Japanese Studies Fellows Played Key Roles in *Japan 2019*



Sinéad Vilbar (left) supervised *Shinto: Discovery of the Divine in Japanese Art*.



Robert Singer (right) introducing the exhibition (right)

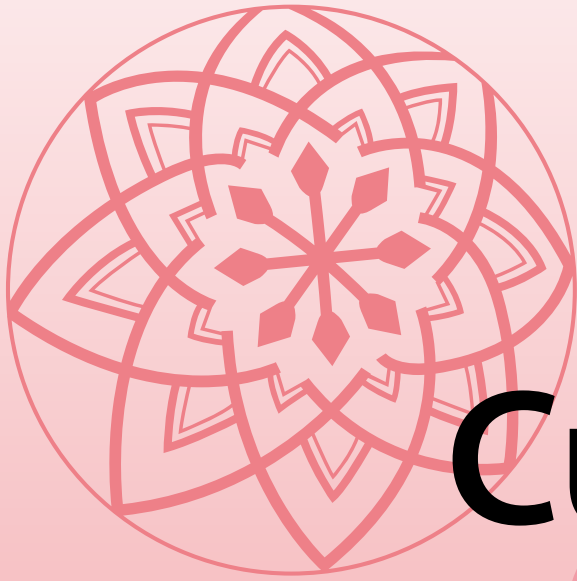
Several former Japanese Studies Fellows played large roles in *Japan 2019* held in the United States. Curator Melissa McCormick (FY1995, FY2012) supervised *The Tale of Genji: A Japanese Classic Illuminated*, which fascinated more than 200,000 visitors at the Metropolitan Museum of Art in New York. Curator Sinéad Vilbar (FY2002) supervised *Shinto: Discovery of the Divine in Japanese Art* at The Cleveland Museum of Art, the first large-scale exhibition of Shinto in the United States in 43 years. Additionally, the planning and supervision of *The Life of Animals in Japanese Art* held in Washington, D.C. and Los Angeles was undertaken by curator Robert Singer, a 1st-term (FY1974) fellow.



The Japan Foundation Asia Center

Japanese-Language Learners Invitation Related with NIHONGO Partners Program

In November 2019, the Japan Foundation invited 50 Japanese-language learners, who had never previously visited Japan, from schools in Southeast Asian countries where NIHONGO Partners have been dispatched. The participants experienced various aspects of Japan through field trips in Tokyo and Hiroshima. During their stay, they visited a high school, university and vocational school to learn about the differences from their own countries such as school buildings, classes and club activities. Through interaction with Japanese students, the participants deepened their understanding of Japan, and furthermore, raised their motivation to learn Japanese. The bonds among learners that transcended national borders were further deepened by communicating in Japanese during the eight-day program.



Culture

Arts and Cultural Exchange

Coming into contact with arts and cultures from other countries generates and stimulates people's interest and empathy beyond language barriers. By introducing diverse aspects of Japanese arts and culture to people around the world, we bring people closer together.



FY2019

1,534,308

attendees and participants in organized projects

Presenting Japan's Diverse Arts and Culture Overseas

To cultivate mutual understanding, we carry out numerous projects to introduce to people around the world the diverse charms of Japanese culture, from traditional performing arts to contemporary arts, through performances, exhibitions, literary works, film screenings and television broadcasts.

We also engage in activities such as dispatching and inviting experts as well as holding workshops for human resources development and networking in arts and culture.



The Japan Pavilion exhibition *Cosmo-Eggs* at the 58th International Art Exhibition – *La Biennale di Venezia*

Exhibitions

La Biennale di Venezia has a 120-year history and attracts widespread attention globally. The Japan Foundation hosted the exhibition *Cosmo-Eggs* at the Japan Pavilion at the 58th International Art Exhibition – *La Biennale di Venezia* in 2019. The *Cosmo-Eggs* exhibition, which was led by five members SHITAMICHI Motoyuki (artist), YASUNO Taro (composer), ISHIKURA Toshiaki (anthropologist), NOUSAKU Fuminori (architect) and HATTORI Hiroyuki (curator), drew over 351,000 visitors while earning favorable acclaim.

In addition, 17 exhibitions visited various countries throughout the world in FY2019 as ongoing programs undertaken globally. The Japan Foundation also held exhibitions with diverse themes ranging from ceramics, crafts and Japanese dolls to contemporary art, photography, architecture and design in 75 cities in 46 countries and regions, and these exhibitions attracted approximately 310,000 visitors.

Stage Performances

On the milestone of the Year of Japan-Peru Exchange (120th anniversary of Japanese migration to Peru), the Okazaki Art Theatre performed *+51 Aviación, San Borja*, a stage work by KAMISATO Yudai that traces the roots of Japanese immigrants in Peru and Mexico. These performances were highly acclaimed by local newspapers and left an indelible mark in these regions where there is scant opportunity for the advancement of Japanese contemporary theater. Meanwhile, to commemorate the 50th anniversary of the opening of the Japan Cultural Institute in Cologne, Germany, the Umewakakennohkai staged Noh performances in Germany and Switzerland. The performance in Grand Hall, Philharmonie Berlin, also held as a Musikfest Berlin's official program, won plaudits as the first full-scale Japanese Noh Theatre performance at the prestigious venue. In addition, the Itami Municipal Itami High School brass band ICHI☆ITA JAZZ Ensemble and Akita Prefecture's *Nishimonai Bon Odori* performed at the Japan-Korea Exchange Festival in Seoul. Also, the Japan Foundation held performances that were the highlights of the National Cherry Blossom Festival in Washington, D.C. in the United States and the London Japan Matsuri in the United Kingdom.



+51 Aviación, San Borja performance by KAMISATO Yudai and the Okazaki Art Theatre in Mexico



Noh Performance at the Kölner Philharmonie in Germany



Opening of the 53rd Japan-Russia Film Festival in Moscow

Japanese Film Screenings across China

In China, based on the achievements of programs carried out in conjunction with the 45th Anniversary of the Normalization of Diplomatic Relations Between Japan and China in 2017 and the 40th anniversary of the conclusion of the Treaty of Peace and Friendship between Japan and China in 2018, Japanese films were screened in eight cities across China to promote mutual film exchanges and to secure more opportunities for Japanese film screenings in China. Over 6,700 spectators were able to enjoy these Japanese films.



At the screening venue in Guangzhou. *Blue Hour* director HAKODA Yuko (center) and fans

Japan-Russia Film Exchange Program

In Russia, based on the achievements of the Japanese Film Festival held during the “Year of Japan in Russia” in 2018, Japanese Film Festivals mainly screening new films were held in 10 cities to deepen future exchanges between Japan and Russia. Besides screening these film works, the Japan Foundation dispatched producers and directors from Japan to hold workshops for local students studying animation and to create opportunities for interacting with fans of Japanese films. Also, because there is a high level of interest in Japanese classical films in Russia, special screenings of films by director YAMADA Yoji were held in Moscow and St. Petersburg. Together with the Japanese Film Festival, around 20,000 fans enjoyed Japanese films.



At the screening venue in Beijing. *SAMURAI SHIFTERS* director INUDO Isshin (center) and fans

Introducing Japanese Television Programs

We implement projects for introducing Japanese television programs that promote an understanding of Japan in countries and regions where there is difficulty in broadcasting Japanese content. In FY2019, 722 Japanese television programs, including dramas, anime, variety shows, films and documentaries, were broadcast in 84 countries and regions.



Jungle Emperor Leo -The brave changes the future-



THE EMPEROR'S COOK



Seeking Utamaro -The Printer from Kyoto and Ukiyo-e in Paris

The Japan Foundation China Center

The Japan Foundation China Center works to enhance mutual understanding between Japan and China by deepening cultural exchange primarily between youths, who play a key role in the future of the two countries, and by providing them with opportunities to experience each other's cultures and lives in each other's countries. 心连心 (“Heart to Heart” in Chinese)—this is our slogan. The Japan Foundation China Center will continue to implement projects that emphasize interactivity and collaboration, and seek to build deeper, longer-term emotional ties.



The 26 students of the 14th session arrived in Japan in September 2019 and are experiencing life as exchange students in high schools across the country.

Long-Term Exchange Program for Chinese High School Students

The China Center provides the opportunity for Chinese high school students to experience the lifestyles of typical Japanese high school students for an 11 month period. In FY2019, 26 students of the 13th session returned to China in July and 26 students of the 14th session arrived in Japan in September, bringing the total number of participants to 442. Of the 416 students who have participated in the program up to the 13th session, 221 have returned to Japan in some manner, such as studying at Japanese universities or postgraduate schools or working at companies in Japan. In this way, the program is steadily fostering personnel who can bring Japan and China closer together.

Centers for “Face-to-Face Exchanges” in China

Centers for “Face-to-Face Exchanges” have been established in universities and other institutions in regional cities around China where opportunities to meet Japanese people and gain information about Japan are relatively limited. The centers provide venues where visitors can experience contemporary Japanese culture by browsing, viewing and listening to the latest magazines, books, visual materials and other contents from Japan. Furthermore, a wide variety of Japan-China exchange events are held through the cooperation of Japanese nationals and local Chinese citizens.



The Hohhot Center for Face-to-Face Exchanges was newly opened at Inner Mongolia University situated in the Inner Mongolia Autonomous Region. It held various events for experiencing Japanese culture and promoting Japan-China exchanges.



A team of Japanese students studying in Beijing and students from Jilin University planned and operated the 3rd Japan-China University Student Forum. At the Changchun Center for Face-to-Face Exchanges, students were able to further deepen exchanges through debates, business model presentations and mini-discussions.

Network Strengthening Programs

We implement a variety of programs emphasizing collaborative work with the aim of building networks among young people who will be the future bearers of Japan-China exchanges. In FY2019 as well, we supported the University Student Exchange Program in which Chinese and Japanese university students collaborate in planning, organizing and holding events that introduce Japanese culture, as well as “RLEAD ASIA,” a training camp-style exchange program in which Japanese and Chinese university students visit companies and engage in discussions using business and job searches as a pathway. We also operate the bilingual Japanese-Chinese “Heart to Heart” website.



Language

Japanese-Language Education Overseas



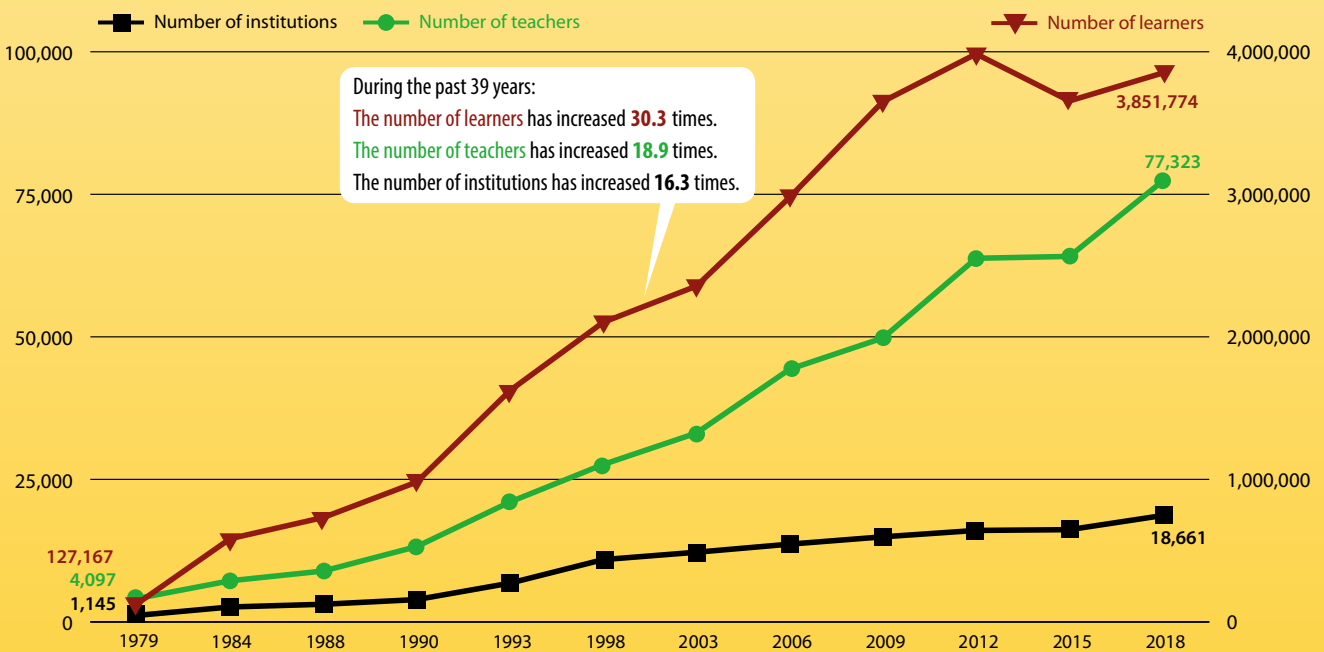
Teaching the Japanese language to people outside Japan helps to increase their interest in and understanding of Japan. We work to enhance Japanese-language learning environments around the world to provide more people with opportunities to study Japanese.

Number of Japanese-language education institutions **18,661**

Number of Japanese-language teachers **77,323**

Number of Japanese-language learners **3,851,774**

Number of Japanese-language learners / teachers / institutions



During the past 39 years:
The number of learners has increased **30.3** times.
The number of teachers has increased **18.9** times.
The number of institutions has increased **16.3** times.

Establishing Environments for Japanese-Language Education Overseas

To ensure that high-quality and stable Japanese-language education is widely implemented overseas, the Japan Foundation collaborated with local government agencies and principal Japanese-language education institutions taking into consideration the circumstances of each country and region and mainly undertook the following programs to promote the establishment of Japanese-language education environments in each country and region.

Dispatch of Japanese-Language Specialists

The Japan Foundation dispatches Japanese-Language Specialists and Japanese-Language Assistants to the Ministries of Education in various countries, the overseas offices of the Japan Foundation and educational institutions (41 countries, 126 posts). We also provide training to local Japanese-language teachers, give advice on preparing teaching materials and Japanese-language teaching methods, support the formation of networks among teachers and visit educational institutions to offer guidance. In addition, we send 12 young Japanese-language teachers (J-LEAP) to elementary, junior high and high schools in the United States.



Participants at the Japanese-Language Teacher Training Course at the Japan Foundation, Cairo and a Japanese-Language Senior Specialist

Training Programs for Japanese-Language Teachers and Learners in Each Country

We invited Japanese-language teachers and learners from overseas to the Japan Foundation Japanese-Language Institute, Urawa and the Japan Foundation Japanese-Language Institute, Kansai for training to enhance the skills of those who will handle Japanese-language education overseas.



Japanese-Language Program for Sakura Network Member Institutions held at the Japanese-Language Institute, Kansai

Encouraging Policy Decision Makers and Educators in Each Country and Region (Advocacy Invitations)

In FY2019, the Japan Foundation invited Australian and Thai educational administration officials and principals of primary and secondary education institutions to Japan with the aim of expanding and raising the quality of Japanese-language education. Participants observed Japanese-language education, culture and social conditions and exchanged opinions with persons involved in Japanese-language education.



Australian school principals visit the Japan Foundation headquarters

Assistance for Activities of Japanese-Language Education Organizations, Support for Network Formation

We provide assistance to JF Nihongo Network (Sakura Network) Members* and Japanese-language educational organizations in each region of the world for activities that help spread the Japanese language. This assistance includes the operation of Japanese-language courses,



"First Conference of Japanese-Language Education in Africa" held in Ethiopia

purchase of teaching materials and holding of speech contests and conferences.

*Sakura Network Members are core Japanese-language educational institutions/organizations located in each country. As of March 31, 2020, the membership included 292 institutions in 93 countries/regions.

Pre-Arrival Japanese-Language Training Based on EPAs/Special Program to Strengthen Teacher Training

The Japan Foundation implemented preparatory pre-arrival Japanese-language training for 662 nurses and certified care worker candidates based on bilateral Economic Partnership Agreements (EPAs) between Japan and Indonesia and the Philippines, respectively. In addition, training programs were implemented in India, Vietnam



Myanmar Japanese-Language Teacher Training Course opening ceremony

and Myanmar for the purpose of developing new Japanese-language teachers and strengthening the teaching skills of current teachers. A total of 1,147 persons from these three countries participated in the training.

GEN-J Japanese-Language Supporters

Under the framework of the Grassroots Exchange Network-Japan (GEN-J) Program, which is scheduled to be implemented for two years from 2018 for the purpose of strengthening collaboration between local communities and Japanese companies in the United States, seven Japanese-language Education Supporters implemented an exchange program using the Japanese language in the U.S. South and Midwest.



A GEN-J Japanese-Language Education Supporter participating in JAPAN FEST 2019 in Atlanta

Enhancing Overseas Japanese-Language Teaching Methods and Proficiency Assessments of Japanese-Language Learners

To further spread Japanese-language learning, it will be important to promote the international standardization of teaching content that raises convenience for Japanese-language learners and to upgrade proficiency assessments to help encourage learning. Accordingly, we implemented the following programs.

Holding of Japanese-Language Proficiency Test (JLPT)

Launched in 1984, the JLPT is the world's most popular Japanese test. In FY2019, tests were held in two additional countries, including Bhutan and the Republic of Benin, and 10 additional cities that include Shaoxing, Zhengzhou, Xinyang (China), Cagayan de Oro (Philippines), Salem (India), Ottawa (Canada), Salamanca (Mexico), Valencia, Las Palmas (Spain) and Kazan (Russia). This brings the total number of testing locations to 307 cities in 87 countries/regions, including Japan (47 prefectures). Also, the number of applicants in Japan and overseas reached 1,362,167, and 1,168,535 persons took the test as the number of applicants and examinees increases continually. Since 1984, the cumulative number of applicants in Japan and overseas has reached 14,397,803, and the number of examinees has reached 12,354,410.



The JLPT held in Kazan (Russia)



JF Japanese e-learning *Minato*

Development and Operation of e-Learning

The Japan Foundation worked to upgrade content, improve convenience and enhance publicity of its Japanese-language learning platform, JF Japanese e-learning *Minato*, by opening the Kanji A1-1, Hiragana/Katakana (Spanish version) and Calligraphy courses. As a result, the number of users doubled from the end of the previous fiscal year to 141,681 users. Additionally, we completely redesigned the *NIHONGO eな* Portal for Learning Japanese to enhance its ease of use on mobile devices.

Disseminating Information about Japanese-Language Teaching Methods and Providing Teaching Materials

To promote the use of the JF Standard for Japanese-Language Education*, we disseminated related information via websites and SNS, and supported overseas local publishing of the standard-compliant teaching material *Marugoto: Japanese Language and Culture* as well as multilingualization of its supplementary teaching materials. We also developed the *JF Can-do for Life in Japan* and a new teaching material *Irodori: Japanese for Life in Japan*, and supervised the NHK WORLD-JAPAN radio program *Easy Japanese*.

* A framework for considering course design, class design and evaluations with an emphasis on developing "competence in accomplishing tasks" (the ability to use language to complete specific tasks) and "competence in intercultural understanding" (the ability to understand and respect one's own and other people's cultures)



The Japan Foundation Japanese-Language Institute, Urawa

The Japan Foundation Japanese-Language Institute, Urawa was established in 1989 to comprehensively provide support for Japanese-language education overseas. Overseas Japanese-language teachers are invited for training programs on the Japanese language, Japanese-language teaching methods and Japanese culture. It also develops and provides teaching materials and implements programs to promote the spread of the JF Standard for Japanese-Language Education.



Japanese Culture Experience Workshop in Japanese-Language Program for Teachers of the Japanese Language

The Japan Foundation Japanese-Language Institute, Kansai

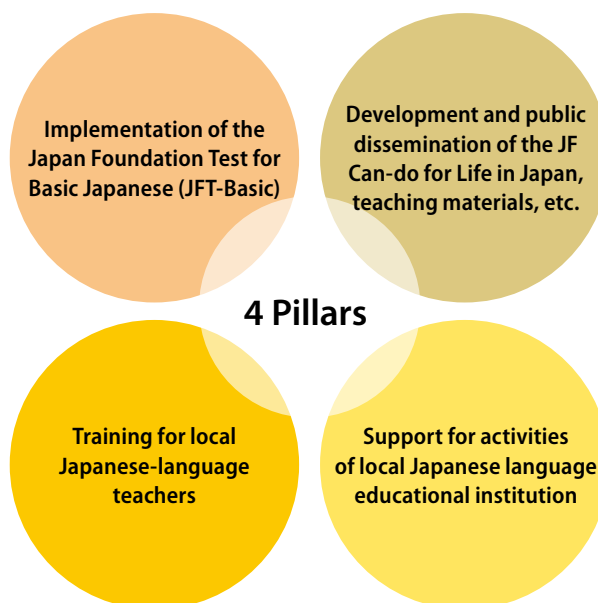
The Japan Foundation Japanese-Language Institute, Kansai was established in 1997 as a Japanese-language training facility providing support to Japanese-language learners from overseas. Foreign service officers, public officials and Japan specialists are invited to the Institute from various countries to receive training in specialized Japanese that is useful for their work duties and research; moreover, the Institute has training programs for learners from overseas. It also promotes the development of e-learning materials such as online Japanese courses, Japanese learning websites and apps based on the know-how it acquires through the training programs.



Japanese-Language Programs for Overseas Students

Japanese-Language Education Programs for New System of Acceptance of Foreign Human Resources

In accordance with the Comprehensive Measures for Acceptance and Coexistence of Foreign Nationals decided by the ministerial council in December 2018, the Japan Foundation launched support programs of Japanese-language education for foreign nationals designated as “Specified Skilled Workers.” In collaboration with overseas offices, Japanese-language specialists and *Japanese for Life in Japan* coordinators who are dispatched from Japan, we implemented initiatives to support the effective and efficient acquisition of Japanese-language proficiency by people aiming to live and work in Japan. These initiatives are centered on the four pillars detailed on the right and target nine countries specified by the Japanese government (China, Mongolia, Indonesia, Cambodia, Thailand, the Philippines, Vietnam, Myanmar and Nepal). In addition, we have developed a new teaching material *Irodori: Japanese for Life in Japan* to support Japanese-language learning and released it online for free of charge.



Japanese for Life in Japan coordinator (Thailand)



The new teaching material *Irodori: Japanese for Life in Japan* can be downloaded free of charge from our website.



Japanese for Life in Japan coordinator (Myanmar)



Press announcement of preliminary figures for the FY2018 Survey on Japanese-Language Education Abroad

Survey on Japanese-Language Education Abroad

To ascertain the current state of overseas Japanese-language education, every three years the Japan Foundation implements the Survey on Japanese-Language Education Abroad on a global basis. A tabulation of the results of the FY2018 survey confirmed that Japanese-language education has been implemented in 142 countries/regions, the most on record since the survey commenced in 1974. The survey also revealed that the number of Japanese-language educational institutions, teachers and learners all increased from the previous survey in FY2015 and that the number of Japanese-language learners throughout the world has reached approximately 3.85 million. The results of the surveys to date, including the FY2018 survey, are disclosed on the Japan Foundation website.



Dialogue

Japanese Studies and Intellectual Exchange

The enhancement of Japanese studies overseas will lead to deeper mutual understanding between Japan and other countries. The Japan Foundation also promotes intellectual exchange through symposia and collaborative projects pertinent to global issues.

Fellowships provided to overseas researchers (total number)*1



Abe Fellowship

6,935 persons

Total number of related publications*2 **4,086** publications

(Includes 1,363 publications in Japanese language and 2,723 publications in English language)

Publications by Abe Fellows*3 in FY2019

60 publications in Japanese language and **75** publications in English language



Japan Outreach Initiative (JOI) Program

Number*4 of persons reached out by JOI Coordinators in FY2019 **48,702** persons

Total number of persons reached out by JOI Coordinators*5 Approximately **1.11** million persons

*1. A cumulative total of newly commenced fellowships each fiscal year since the Japan Foundation's establishment in 1972. Includes persons associated with arts and culture, Japanese-language education and Asia Center programs.
*2. Start of program ~ March 2020
*3. Includes past recipients
*4. Number of persons participating in events and meetings
*5. FY2003 (the second year of the 1st group) ~ end of FY2019

Japanese Studies Overseas

To consolidate the foundation of Japanese studies around the world, and to support its specialists, the Japan Foundation provides comprehensive support to core institutions in different countries/regions. The support will be extended mainly to international conferences, staff expansion, library acquisitions and study tours to Japan. We also work to facilitate further development of Japanese studies by strengthening cross-border scholarly networks.



Winter Institute 2019

The Winter Institute was held in December 2019, gathering Japanese Studies researchers from Japan, the United States and Southeast Asia, in order to strengthen the researcher network between these three regions. A total of 24 young researchers who participated in the former Summer Institutes, which took place every summer until 2018, joined the program in Japan. The Winter Institute also invited some U.S. lecturers who have been working to strengthen cooperation with Southeast Asia. There were lively discussions about international career development and sustainable cooperation among the three regions.

East Asian Consortium of Japanese Studies

The 4th International Conference of the East Asian Consortium of Japanese Studies, East Asia's first network of Japan researchers, was held in Taiwan. The annual conference, which has been held in Korea, China and Japan previously, came to the fourth and final host and recorded the biggest number of panels and participants.



Japanese Studies Fellowship Mahmoud Al-Qaysi (Professor at the College of Arts of the University of Baghdad)



Professor Al-Qaysi, one of the few Fellows ever invited from Iraq, has received the Order of the Rising Sun, Gold Rays with Rosette in 2019 for his commitment to building the foundation of Japanese Studies in Iraq. He has received the Japan Foundation Fellowship several times to conduct researches in Japan, has been mentoring younger Iraqi researchers as well as organizing Japanese language courses at the University of Baghdad, which led to the opening of a Japanese Language Lab at the university in 2019. He is indispensable in the development of Japanese studies and Japanese-language education in Iraq.

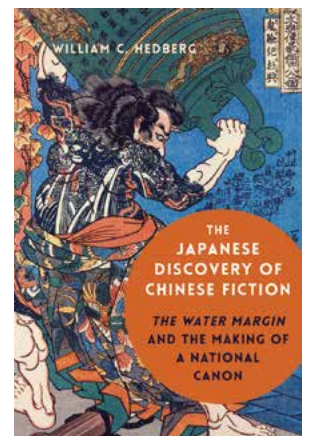
Support for Japanese Studies Organizations

Arizona State University (ASU) (U.S.)

At Arizona State University, one the largest universities in the United States by enrollment, Assistant Professor Robert Tuck was hired into a tenure-track line, a position established with the support of the Japan Foundation. This has made it possible to develop new courses on Japan at both the undergraduate and graduate levels. Our support, which also includes assistance for visiting lecturerships, library acquisitions and research trips to Japan, has prompted the university to approve yet another tenure-track position in the program. The new hires allowed the suspended Master's Program to restart.



Assistant Professor Robert Tuck, a newly hired teaching staff member



A book authored by Assistant Professor William C. Hedberg at Arizona State University with research support

Intellectual Exchange

In order to provide opportunities for experts to engage in dialogues on global issues and topics, and to further deepen their intellectual exchanges, we support international conferences and symposia, as well as mutual visits by public intellectuals. We seek to make a contribution toward global development and stability by promoting mutual understanding in international society, and by fostering the next generations necessary to advance future intellectual exchange.



Japan-Germany Symposium “Tokyo and Berlin – Universal Design in Urban Development”

In November 2019, we held a symposium in Berlin on inclusive and accessible urban development. Together with their German counterparts, five Japanese universal design experts who represent researchers, the disabled, governments and private companies, actively engaged in the discussion and assessed the latest design initiatives in Tokyo, the host of the next Olympics. Many in the audience praised the application of universal design in the urban development scenes of Japan.

Inviting Chinese Intellectuals to Japan

To deepen an understanding of Japan and to build an intellectual network (between Japan and China), the Japan Foundation invites influential young and mid-career researchers and intellectuals from China to Japan. Zhang Feng, who was invited in FY2019, studied the Japanese perception of sports in Japan and has published his findings. He published 15 articles in media outlets in China. One of these articles was translated into Japanese and published in Japan.



Columnist Zhang Feng, who actively reports on people and places related to sports

Augustin Berque Symposia

Augustin Berque, a retired professor at the School of Advanced Studies in the Social Sciences, who is an expert in Fudo (a tight interaction between natural environment and culture) and received the Japan Foundation Award in 2011, gave talks at two symposia in Paris. In the symposia, he held lively discussions with the audience. His theory about the coexistence of nature and humans, which he has established through his studies in Japan, has attracted a great deal of interest worldwide including Japan, which had been affected by the Great East Japan Earthquake.



Augustin Berque (left) giving a lecture at a symposium commemorating the publication of a French translation of HATAKEYAMA Shigeatsu's *Mori wa Umi no Koibito*

The Japan Foundation Center for Global Partnership (CGP)



The Japan Foundation Center for Global Partnership (CGP) was established in 1991 with the goal of fostering Japan-U.S. cooperation in tackling global issues. The center promotes dialogue and exchange between all facets of Japanese and U.S. society in order to create a solid partnership based on mutual understanding and joint Japan-U.S. contribution to the global community.

Abe Fellowship Program/ Abe Fellows Global Forum

The Abe Fellowship Program is a research fellowship program operated jointly by the Japan Foundation Center for Global Partnership and the Social Science Research Council (SSRC) of the United States. In FY2019, a total of 14 researchers and journalists were awarded fellowships, and the Abe Fellows Global Forum on cybersecurity was held in San Francisco and Washington, D.C.



The Abe Fellows Global Forum held at the Hudson Institute (Washington, D.C.) on September 5, 2019

U.S.-Japan Public Intellectuals Network Program



Dr. Cynthia Teniente-Matson lectures at Mie University on January 24, 2020.

Dr. Cynthia Teniente-Matson, President of Texas A&M University-San Antonio, participated in a program that invites leaders from diverse intellectual communities in the United States to create a network of intellectuals with their peers in Japan. Dr. Teniente-Matson conducted a dialogue with Dr. TAKAHASHI Yuko, President of Tsuda University, about women's participation and leadership in higher education. At Mie University, she delivered a lecture entitled "Career Design and Community Engagement in the Global Era" and exchanged opinions with students.

Japan Outreach Initiative (JOI) Program

The JOI Program is co-sponsored by the Japan Foundation and the Laurasian Institution, a U.S. non-profit organization. Aiming to deepen interest in and understanding of Japan at the grassroots level, the program dispatches coordinators to the U.S. Midwest and South. In FY2019, the program dispatched five coordinators (18th group). A total of 16 coordinators, including 11 continuing coordinators, conducted a wide range of activities introducing Japanese culture at local schools, libraries and other organizations.



The coordinator presents spring-themed origami (paper folding) and creates Mother's Day cards with carnations.

Grassroots Exchange Network-Japan (GEN-J) Program Inviting Regional Leaders



Visitors listen to an explanation during a company visit.

As part of the Grassroots Exchange Network-Japan (GEN-J) program, which aims to strengthen cooperation between Japanese companies and communities in the United States, 120 leaders from the Midwest and the South were invited to Japan, including a Secretary of State, assembly members, executives of investment promotion organizations and journalists. They stayed in Japan for about a week, participating in briefings at the Ministry of Foreign Affairs, the Japan Federation of Economic Organizations and JETRO in Tokyo, followed by visits to regional cities. They visited the production sites of Japanese companies and exchanged opinions with local business leaders. They also visited historical and cultural facilities and experienced tea ceremony and Japanese cuisine. The experience enabled them to deepen their understanding of not only business in Japan but also Japanese culture and society.



The Japan Foundation Asia Center

Through interacting and collaborating in Japanese-language education, arts and culture, sports, grassroots exchange and intellectual exchange, Asia Center conducts and supports collaborative initiatives with its Asian—primarily ASEAN—counterparts. Asia Center aims to develop the sense of kinship and coexistence as neighboring inhabitants of Asia and nurture human resources to become a bridge between Asian countries.



Support for Japanese-Language Learning

Students taught (total) **654,553** students

Number of NIHONGO Partners dispatched (total) **2,375** persons



Arts and Cultural Exchange

Number of events organized/supported **2,330**

Participants (total) **5,408,946** participants

* Accumulative total from FY2014 to FY2019

Background of the Establishment of Asia Center

Asia Center was established in April 2014 to implement “WA Project: Toward Interactive Asia through Fusion and Harmony,” a new policy for cultural exchange in Asia announced by the Japanese government at the ASEAN-Japan Commemorative Summit Meeting in Tokyo in December 2013.

Support for Japanese-Language Learning

The NIHONGO Partners Program

The NIHONGO Partners program sends Japanese citizens to educational institutions in Asia to serve as partners for Japanese teachers and their students by supporting Japanese-language classes and introducing Japanese culture. In FY2019, 515 partners were dispatched to 501 junior high schools, high schools, universities and other learning institutes in the 10 ASEAN countries, China and Taiwan. The NIHONGO Partners program not only fosters connections with Japanese-language learners and local people but also introduces Japanese culture through extracurricular activities and events.

People from a Variety of Ages and Backgrounds Support Students to Learn Practical Japanese

NIHONGO Partners participate in the program with a passion for interacting with Asia using their respective personal strengths and experiences, regardless of their knowledge or skills in Japanese-language teaching. As native Japanese speakers, they support students to learn practical Japanese language and culture.

Learning from One Another Creates Strong Ties

The role of NIHONGO Partners is to learn the local language and culture of where they are sent, as well as conveying Japanese language and culture. They deepen relationships by spending time in the same community and interacting respectfully.



Messages from Past Participants

NIHONGO Partners

SANO Yukiko
NIHONGO Partners, Indonesia Group 9



I encouraged students at a school that I was dispatched to exchange letters with high school students in my hometown of Numazu (Shizuoka Prefecture). I was really happy to see high school students in Indonesia interact with other students of their age through Japanese. Since returning to Japan I have been working as a firefighter in Numazu and have been engaged in disaster preparedness education for foreign residents. I have been volunteering to help foreign residents living in local communities communicate in Japanese and reduce the worries in their lives. Working as a bridge between Japan and other parts of Asia, I wish to increase the number of fans of Japan.

Teacher at a school accepting NIHONGO Partners

Fiona Toh Shu Chew (Malaysia)
Miri Science Secondary School



Students were initially shy about talking to NIHONGO Partners. However, you could see that they had a strong desire to talk to them and gradually came out of their shells. The NIHONGO Partners invited Japanese friends to classes and gave students opportunities to talk in Japanese, which helped them improve their speaking and listening abilities. Since they have come, students have started to more actively participate in classes, and they are learning more about the Japanese language and Japan.

Student at a school accepting NIHONGO Partners

Sitigron Krasu (Thailand)
Pua School



I primarily studied grammar and vocabulary in Japanese classes and was not good at conversation. After the NIHONGO Partners came here, I had opportunities to talk in Japanese every day and came to speak in Japanese with confidence. I would like to study Japanese at university and study in Japan. I would also like to have a job related to Japan in the future.

Arts and Cultural Exchange Programs



Asia Center promotes exchange programs among the people of Asia in a wide range of fields such as art, films, performing arts, sports, grassroots exchange and intellectual exchange. We create a new Asian culture together through interaction, collaboration and respect for diversity and people's identity.

Thailand and Japan International Collaboration in Performing Arts

Pratthana – A Portrait of Possession is a contemporary theatre production completed after years of international collaboration. It is based on a novel by Thai writer Uthis Haemamool that was adapted for the stage by playwright/director OKADA Toshiki, TSUKAHARA Yuya as a scenographer and Thai actors and staff from Japan and Thailand. The stage production was first performed in Japan as part of *Asia in Resonance 2019*. Eleven performances and related events attracted a total of 1,800 viewers. The theatre production was awarded the Special Jurors Prize and the Outstanding Staff Award at the 27th Yomiuri Theater Awards.



Media Art Exchange Initiative

As part of exchange programs focusing on art and technology, the exhibition *Open Possibilities: There is not only one neat way to imagine our futures* was held in Singapore and Tokyo in cooperation with the NTT InterCommunication Center [ICC]. In the electronic music category, the Imaginary Line concert featuring artists from four Asian countries was held in Tokyo.



Film Culture Exchange Projects with the 32nd Tokyo International Film Festival

In collaboration with the 32nd Tokyo International Film Festival (TIFF), 70 film professionals from Asia were invited to Japan and given the opportunity to further enhance a network that connects with Japanese peers. We co-hosted the CROSSCUT ASIA section of the film festival, which showcased Asian films, screening 10 Southeast Asian films, including horror, thriller and science fiction films. The screening and related events, including a symposium, attracted more than 2,500 people.



ASIAN ELEVEN: Football Exchange Project between Japan and Southeast Asia

Under the slogan, "Create the most diverse team in Asia," the ASIAN ELEVEN team was formed from selected players from Japan, the 10 ASEAN countries and Timor-Leste. In June, a men's U18 international friendly football match between ASIAN ELEVEN and the Tohoku selection team was held at J-Village Stadium in Fukushima Prefecture. In November, a men's U16 international friendly match between the ASIAN ELEVEN team and the Thailand National Team was held in Bangkok, Thailand. Japanese vocal group Little Glee Monster sang "I Believe," the ASIAN ELEVEN theme song.



The 6th Sanriku International Arts Festival

Together with the Sanriku International Arts Promotion Committee, Asia Center held the 6th Sanriku International Arts Festival "FURERU" in Ofunato City, Kuji City, Otsuchi Town and Yamada Town in Iwate Prefecture and Hachinohe City in Aomori Prefecture. Barong dancers and gamelan musicians from Bali, Indonesia, and a group of gamelan musicians in Japan participated in the festival. A variety of "lions" both in Japan and from Indonesia performed powerfully together.



EYES for Embracing Diversity (EYES project)

With the goal of creating a multicultural society, Asia Center carried out a project to develop mid-level human resources in NPOs and cultural institutions in Japan and ASEAN countries. In a two-week training program in the Philippines and Japan, participants thought about model projects for including cultural differences and enhancing society through a "community design" approach using art.



Promoting Understanding of and Participation in International Cultural Exchange

The Japan Foundation gives the Japan Foundation Awards and the Japan Foundation Prizes for Global Citizenship to individuals and groups who have contributed to deepening mutual understanding between Japan and the world through international cultural exchange, and to groups who engage in outstanding community-based international cultural exchange.

The Japan Foundation Awards

The Japan Foundation Awards are given to individuals and groups who make particularly significant contributions to the promotion of international mutual understanding and friendship through academic, artistic or other cultural activities. In FY2019, the 47th such occasion, three recipients were chosen from a total of 73 individuals and groups.

FY2019 recipients and reasons for the award



TANIKAWA Shuntaro (Poet) / Japan

TANIKAWA Shuntaro has been crafting poetry since 1952 and his activities span a wide range of literary styles that include poetry, lyrics, screenplays, picture books, fairy tales and essays. His numerous works have been featured in Japanese-language learning materials. These works include *Word Games: Nonsense Pictures and Rhymes*, which can help learners gain a sense for the distinctive rhythm and sound of Japanese, and *To Live*, a poem that tackles universal subjects in plain language. Moreover, these works have been translated into over 20 languages and have been instrumental in bridging the cultural distance between Japan and other countries.



Association of Indonesian Alumni From Japan (PERSADA) / Indonesia

Established in 1963, the Association of Indonesian Alumni From Japan (PERSADA) is an association of people who previously studied in Japan. Today, PERSADA has around 8,000 former international students to Japan and undertakes numerous meaningful activities. In 1986, PERSADA and the Indonesia-Japan Friendship Association led the founding of Darma Persada University, a private institution. The university has produced a large number of human resources who serve as bridges between the two countries. PERSADA functions as a nexus of exchange linking Japan and Indonesia and it is expected to continue to play a core role in friendly exchanges in the future.



Ewa Pałasz-Rutkowska (Professor, University of Warsaw) / Poland

Professor Pałasz-Rutkowska is one of Poland's foremost scholars of Japanese history. Pałasz-Rutkowska engages in research and education at the Department of Japanese Studies, University of Warsaw, and has nurtured many younger generations. Her most noteworthy academic achievement has been her research on Japan-Poland relations from the time of the Russo-Japanese War to the end of World War II. Her book *History of Polish-Japanese Relations 1904-1945* remains the only historical account in this field. Furthermore, she has contributed to mutual understanding between Japan and the world by disseminating Japanese culture, compiling publications about relations between Japan and Poland and participating in the organization of international academic societies.

The Japan Foundation Prizes for Global Citizenship

The Japan Foundation Prizes for Global Citizenship are awarded to organizations in Japan that engage in original, forward-thinking initiatives for deepening ties between Japan and other countries, facilitating the exchange of knowledge, ideas and information and encouraging collaborative thinking. In FY2019, the 35th occasion, three organizations were selected for prizes from a list of 98.

FY2019 recipients and reasons for the prize



The Multicultural Coexistence Circle of Yokkaichi City Nishi Sasagawa Junior High School (Yokkaichi City, Mie)

Around 30% of the students at Nishi Sasagawa Junior High School have non-Japanese ancestry. Although the school determined the framework for the "Multicultural Coexistence Circle," this circle participates closely in community events, such as student-led disaster drills, the summer festival and school culture festivals. Rather than mere involvement in "multicultural coexistence activities," students participate in this circle with a high awareness of "community building." These community activities undertaken by the students have inspired adults and led to wider activities through families as well as contributed to building close personal relationships between citizens that transcend divisions between non-Japanese and Japanese, with students who have developed an attachment to their hometown establishing their own circles after graduation.



Hearts of Gold (Okayama City, Okayama)

Based on the concept of "fostering the healthy development of body and mind," Hearts of Gold holds Japanese classes and cultural exchange initiatives in collaboration with organizations across Okayama Prefecture designed to support physical education, provide childcare facilities and develop young talent. These initiatives target children, persons with disabilities and the impoverished in areas affected by conflict/natural disasters or in developing countries. Realizing collaboration that brings together private, public and academic institutions has also been drawing considerable attention as a way to solve complex social issues.



The International Theater Festival Okinawa for Young Audiences Executive Committee (Naha City, Okinawa)

For many years, this festival has provided an opportunity for children and community members to casually acquaint themselves with creative, high-quality theater pieces from around the world based on the idea that a great artistic experience is *nuchigusui*—literally "medicine for life" in the Okinawan dialect. With around 20 productions from around 10 countries performed each time, the festival develops children's emotional sensitivity and creativity primarily through non-verbal productions and now serves as a hub of the Asian theater festival network that brings together theater professionals from around the world. It is an excellent example of how international cultural exchange can connect hearts at the local, global and individual level, including audiences, theaters, theater troupes, local residents, volunteers and interns from abroad.

1. Performances

Umemakakenohkai, *Noh* performances in Germany and Switzerland
Kukangendai, Australia performance
KAMISATO Yudai /Okazaki Art Theatre, Peru and Mexico performances
TICAD7 LIVE HEART FOR AFRICA - TICAD7 (7th Tokyo International Conference on African Development) official side event performance by MISIA and KUBOTA Toshinobu –

2. Japan Festival Support Program

Live performance by MORIYAMA Naotaro and others (National Cherry Blossom Festival 2020; the performance was cancelled due to COVID-19, and a special video was distributed on the festival's official website.)
Performances of the Itami Municipal Itami High School brass band ICHI☆ITA JAZZ Ensemble and the *Nishimonai Bon Odori dance* in Korea (Japan-Korea Exchange Festival in Seoul and others)
Iwami Kagura UK Tour (London Japan Matsuri ("Japan-UK Season of Culture") and others)

3. Grant Program for Dispatching Artists and Cultural Specialists

78 grants provided for the dispatch of personnel to 147 cities in 54 countries/regions

4. Performing Arts Japan (PAJ)

15 grants provided for performances held in 32 cities in 9 countries
North America: 7 grants for performances held in 17 cities in the U.S.
Europe: 8 grants for performances held in 15 cities in 8 countries

5. International Exhibition Participation

The Japan Pavilion at the *58th Venice Biennale International Art Exhibition* (Italy)

6. Art Exhibitions

1 exhibition in 1 city in 1 country

7. Japan Foundation Traveling Exhibitions

17 sets, traveling 75 cities in 46 countries/regions

8. Exhibitions Abroad Support Program

33 grants for exhibitions in 29 cities in 18 countries

9. U.S. and European Museum Infrastructure Support Program

4 grants provided in 4 cities in 2 countries

10. Participation in International Book Fairs

Participation in 8 book fairs in 8 cities in 8 countries

11. Support Program for Translation and Publication on Japan

18 grants provided for translations in 14 countries

12. Networking of Cultural Specialists

Ishibashi Foundation/The Japan Foundation Fellowship for Research on Japanese Art: 15 researchers from 12 countries invited to Japan
Ishibashi Foundation and The Japan Foundation Art Curator Exchange Program (U.S.): 5 curators invited to Japan
Ishibashi Foundation and The Japan Foundation Art Curator Exchange Program (Europe): 7 curators from 2 countries invited to Japan
Invitation of Performing Arts Professionals from North America: 5 professionals from 2 countries invited to Japan
Japan-China Curator Exchange Program: 5 curators from 1 country invited to Japan
mASEANa Project: 11 people from 7 countries invited to Japan

13. Transmission of Information

Operation of the performing arts website "Performing Arts Network Japan (PANJ)"
Operation of translation and publishing information "Japanese Literature in Translation Search List"
Invitation of the 13th Japan International MANGA Award Winner: 4 winners from 4 countries invited to Japan
ASEAN Orchestra Support Project: discussion
Japanese Film Database (JFDB)*

14. Japan 2019

8 Official Programs

The Tale of Genji: A Japanese Classic Illuminated
Shinto: Discovery of the Divine in Japanese Art
The Life of Animals in Japanese Art
National Cherry Blossom Festival Performances
Japan Day 2019@ Central Park
JAPAN NIGHT Concert
MIYAGI Satoshi's *Antigone*
Sugimoto Bunraku Sonezaki Shinju

138 Associated Programs

15. Japonismes 2018 Follow-Up

Invitation of groups of high school students from France: 19 students from 5 schools in 5 cities in France

16. Japanese Film Screenings

Japanese film festivals held in 70 countries/regions
Grants for 19 screenings held in 14 countries/regions

17. Japanese TV Broadcasting Abroad

722 television programs broadcast to 84 countries/regions

18. Long-Term Exchange Program for Chinese High School Students

26 students from the 13th session returned to China
26 students from the 14th session arrived in Japan

19. Centers for "Face-to-Face Exchanges" in China

Centers for "Face-to-Face Exchanges" organized and held events in 18 cities in China. The events were attended by 34,631 people.
Seminars introducing Japanese business culture
Implementation of various lectures and demonstrations
Training for staff of Centers for "Face-to-Face Exchanges"

20. Network Strengthening Programs

University Student Exchange Program
Visits to China by High School Principals and Teachers
RLEAD ASIA 2019
3 dispatch programs and 2 invitational programs were implemented, such as Training in Japan for representative students from Centers for "Face-to-Face Exchanges"

*Administered by the Film and Broadcast Media Department

Summary of Japanese-Language Education Overseas Programs

1. Promoting the JF Standard for Japanese-Language Education

JF Standard for Japanese-Language Education website accessed approximately 245,000 times in 12 months

'Minna no Can-do' website accessed approximately 350,000 times in 12 months

Providing information at various seminars and training sessions in Japan and overseas

Marugoto: Japanese Language and Culture published overseas edition in 6 levels in 4 countries

JF Can-do for Life in Japan and new teaching material Irodori: Japanese for Life in Japan were released

Supervised NHK World Japan's Easy Japanese

2. JF Language Course

Language courses held in 29 cities in 27 countries/regions

3. Online Educational Tools

- (1) The online version of "Erin's Challenge! I Can Speak Japanese." accessed approximately 3.50 million times in 12 months
- (2) 'Minna no Kyozai' website accessed approximately 1.70 million times in 12 months
- (3) Approximately 142,000 registered users for JF Japanese e-Learning Minato
- (4) Hirogaru, get more of Japan and Japanese website accessed approximately 550,000 times in 12 months
- (5) MARUGOTO Plus websites accessed approximately 5.55 million times in 12 months
- (6) Japanese in Anime & Manga website accessed approximately 950,000 times in 12 months
- (7) NIHONGO e's website accessed approximately 1.08 million times in 12 months
- (8) The Nihongo de Care-navi website accessed approximately 780,000 times in 12 months
- (9) The HIRAGANA Memory Hint (character learning app) downloaded approximately 80,000 times in 12 months
- (10) The KATAKANA Memory Hint (character learning app) downloaded approximately 50,000 times in 12 months
- (11) The KANJI Memory Hint 1,2&3 (character learning app) downloaded approximately 70,000 times in 12 months
- (12) Challenge with Erin -Japanese Language Test - (beginner-level learning app) downloaded approximately 20,000 times in 12 months

4. Tests for Assessing Japanese-Language Proficiency

- (1) Japanese-Language Proficiency Test (JLPT)
 - 1st Test (July 7)
 - Overseas: Held in 147 cities in 46 countries/regions, with 423,604 applicants (347,517 examinees).
 - Japan*: Held in 47 prefectures, with 220,500 applicants (202,931 examinees).
 - 2nd Test (December 1)
 - Overseas: Held in 238 cities in 75 countries/regions, with 458,684 applicants (381,933 examinees).
 - Japan*: Held in 47 prefectures, with 259,349 applicants (236,154 examinees).
 - Accumulative total of overseas applicants 10,840,746 (9,110,178 examinees)
 - Accumulative total of applicants in Japan 3,557,057 (3,244,232 examinees)
 - * In Japan, the test is run by Japan Educational Exchanges and Services (JEES).
- (2) The Japan Foundation Test for Basic Japanese (JFT-Basic)
 - 8 times a year, 6 overseas countries, 9 cities, with 8,334 applicants (7,971 examinees)

5. Surveys and Provision of Information Relating to Japanese-Language Projects

The Japan Foundation Japanese-Language Education Bulletin issued annually

Operation of website "Nihongo Kyōiku Kuni-Chiikibetsu Jōhō" (Information on Japanese-language education by country/region; available in Japanese)

Aggregation of data from the Survey on Japanese-Language Education Abroad 2018, announcement of preliminary data (press release), prepared a report

6. Japanese-Language Education Overseas Programs of Overseas Offices and the "JF Nihongo Network" (Sakura Network)

Projects by Japan Foundation's overseas offices and Japan Center for Human Resources Development (Japan Center) branches: 256 projects in 29 countries

Sakura Network: 292 member organizations in 93 countries/regions

Support for overseas Japanese-language education institutions (grants): 569 grants in 82 countries/regions

7. Dispatch of Japanese-Language Specialists

Dispatching of Japanese-language Specialists and other personnel

Senior Specialists: 32 posts in 24 countries

Specialists: 82 posts in 37 countries

Assistants: 12 posts in 12 countries

Japanese Language Education Assistant Program (J-LEAP): 12 posts in 1 country

Japanese-Language Supporters (Grassroots Exchange Network - Japan: GEN-J): 7 posts in 1 country (U.S.)

8. Training Programs for Overseas Teachers

Training Program for Leading Teachers of the Japanese Language

Graduate Program in Japanese Language and Culture (Master's Course): 4 people (4 ongoing) from 4 countries

Training Programs for Teachers of the Japanese Language

Basic Training: 42 people in 31 countries

Teaching Methods: 60 people in 30 countries/regions

(Teaching Methods (Summer): 34 people in 25 countries/regions)

(Teaching Methods (Winter): 28 people in 17 countries/regions)

Intensive Training Program for Secondary School Teachers of the Japanese Language from Korea: 35 people in 1 country

Intensive Training Programs for Secondary School Teachers of the Japanese Language from China: 18 people in 1 country

Training Program for the Japanese Teachers Association in Thailand (JTAT): 14 people from 1 country

Theme-based: 36 people from 24 countries/regions

(Theme-based (21st century skills): 15 people from 13 countries/regions)

(Theme-based (business Japanese): 11 people from 8 countries)

(Theme-based (course design): 10 people from 9 countries)

Japanese Language: 21 people from 16 countries

Japanese Teaching Methods Program for Teachers of Specified Skilled Worker Candidates:

81 people from 8 countries

Japanese-Language Training Program for Queensland Teachers invited by Osaka Prefectural Government: 5 people from 1 country

Japanese-Language Program for Sakura Network Training Member Institutions (teachers):

8 people from 5 countries

Southeast Asian Japanese-Language Teachers' Training College Course in Japan (Indonesia) (teachers): 12 people from 1 country

Grassroots Exchange Network-Japan Program (GEN-J) (teachers): 4 people from U.S.

9. Training Programs for Overseas Learners

Japanese-Language Program for Specialists

Programs for Foreign Service Officers and Public Officials in FY2018 (ongoing)

Foreign service officers: 27 people from 27 countries

Public officials: 5 people from 5 countries

Specialists in Cultural and Academic Fields

6-month course: 16 people from 7 countries

Programs for Foreign Service Officers and Public Officials in FY2019

Foreign service officers: 29 people from 29 countries

Public officials: 2 people from 2 countries

Specialists in Cultural and Academic Fields

2-month course: 9 people from 6 countries

6-month course: 10 people from 8 countries

Japanese-Language Programs for Overseas Students

Japanese-Language Programs for Overseas Students (outstanding students): 46 people from 46 countries

In Country Program for People in Brazil who wish to study in Japan: 10 people from 1 country

Lee Soo-Hyun Youth Exchange Program: 17 people from Korea

Japanese-Language Program for Outstanding Participant of the 48th Japanese-Language

Speech Contest in Indonesia: 1 person from 1 country

Japanese-Language Program for Sakura Network Member Institutions (students): 5 people from 5 countries

In Country Program for ESSEC Business School Students: 7 people from 1 country (France)

Grassroots Exchange Network-Japan Program (GEN-J) (students): 20 people from U.S.

Japanese-Language Education Capacity Building

Southeast Asia Teachers' Training College Course in Japan (Indonesia) (students): 13 people from 1 country

10. Japanese-Language Education Training Program for Candidates for Nurses and Certificated Care Workers Related EPAs

6-month Preparatory Japanese-Language Training Programs for Prospective Nurses and

Certificated Care Workers implemented in Indonesia and the Philippines

4 EPA-related training programs implemented in 2 countries

FY2018 (ongoing): 334 from Indonesia / 323 from the Philippines

FY2019 (new): 322 from Indonesia / 340 from the Philippines

11. Commissioned Training Programs

Training for Teachers

Hakuhodo Foundation Japanese Language Exchange Program

11th Training Program in Japan for Overseas Teachers: 10 people from 10 countries/regions

Hakuho Japanese Research Fellowship: (13th) 1 person from 1 country (ongoing)

(14th) 1 person from 1 country

Preparatory Training Program Prior to Dispatch to Russia (Japan Russia Youth Exchange

Center): 18 young Japanese-language teachers from 1 country

In Country Training Program for Japanese-Language Teachers of New Zealand: 6 teachers

from 1 country

In Country Training Program for Japanese-Language Teachers of Universidad Veracruzana in

Mexico: 4 teachers from 1 country

Training for Learners

Japan Latvian Society in Kansai Japanese-Language Program: 1 person from 1 country

In Country Training Program for Egypt-Japan University of Science and Technology (E-JUST):

5 people from 1 country

Japanese-Language Program for Indonesian University Students (Commissioned by Osaka

Gas Foundation of International Cultural Exchange): 2 university students from 1 country

In Country Training Program for Griffith University (Australia): 7 students from 1 country

In Country Training Program for Honda R&D Americas: 3 people from 1 country

12. Other Training Programs

Japanese-Language Program for JET Participants in Osaka: 47 people from 7 countries

JET Training Program for Teaching Japanese as a Foreign Language: 29 people from 12

countries

13. Libraries of Japanese-Language Institutes

The Library of the Japanese-Language Institute, Urawa received 15,863 visitors

The Library of the Japanese-Language Institute, Kansai received 12,656 visitors

1. Support for Japanese Studies Organizations

(1) Support Program for Development of Infrastructure for Japanese Studies

Asia

Korea: Hallym University; Korea University; Institute for Japanese Studies, Seoul National University; Department of Asian Languages and Civilizations, Seoul National University

China: Zhejiang Gongshang University; Nankai University; Fudan University

Taiwan: Chengchi University

Indonesia: University of Indonesia

Viet Nam: University of Social Sciences and Humanities, VNU-Hanoi

India: School of International Studies, Jawaharlal Nehru University; School of Language, Literature and Culture Studies, Jawaharlal Nehru University; University of Delhi; Visva-Bharati University; Presidency University

Bangladesh: University of Dhaka

Americas

U.S.: Arizona State University; University of California, Irvine; University of California, Santa Barbara; Case Western Reserve University; Purdue University; The University of Utah

Europe

England: University of East Anglia

Uzbekistan: Tashkent State Institute of Oriental Studies

Russia: Saint Petersburg State University, Far Eastern Federal University

Middle East and Africa

Israel: Hebrew University of Jerusalem

Egypt: Cairo University

(2) Japanese studies project grants

37 projects in 25 countries/regions

2. The Beijing Center for Japanese Studies

(1) Invitation programs

Beijing Foreign Studies University

15 Masters students of the 33rd session invited to Japan to engage in Japanese studies

3 PhD fellows of the 18th session

Peking University

20 PhD students of the 14th session invited to Japan to engage in Japanese studies

(2) Dispatch programs

7 people to Beijing Foreign Studies University

9 people to Peking University

3. Japanese Studies Fellowship

Scholars/Researchers (Long-term): 37 fellows

Scholars/Researchers (Short-term): 27 fellows

Doctoral Candidates: 44 fellows

4. Enhancement of Japanese Studies Network

(1) Hosted/Co-hosted programs

The 4th International Conference of the East Asian Consortium of Japanese Studies

The 2nd Collaborative Research Workshop for Aspiring Scholars in Japanese Studies

Training of young Russian researchers

Follow up survey on Central Asia Cultural Exchange Mission

Lectures by Japanese studies specialists (Paris)

(2) Grant programs: 23 projects in 22 countries

5. Enhancement of Intellectual Exchanges

(1) Hosted/Co-hosted events

Japan-China Intellectual Exchange Program:

2 groups and 8 individuals invited to Japan

Follow up invitation: 1 project

Japan-Germany Symposium "Tokyo and Berlin—Universal Design in Urban Development"

Middle East and North Africa Group Study Tour Program: 7 people from 3 countries invited to Japan

"Hamamatsu International Summit on Intercity Collaboration 2019"

(2) Grant programs for intellectual exchange conferences: 20 projects

6. Grant Program for Social Science, Research and Education on Contemporary Japan

Asia and Oceania

Australian National University

Americas*

Yale University

Johns Hopkins University

Indiana University

Europe

King's College London

INALCO (Institut National des Langues et Civilisations Orientales)/Paris Diderot University (also known as Paris 7)

7. Intellectual and Grassroots Exchanges with the United States*

(1) Hosted programs

Abe Fellowship: 10 researchers and 4 journalists

U.S.-Japan Intellectual Network Program: 2 persons (1 invited and 1 dispatched)

Japan Outreach Initiative (JOI) Program: 16 JOI coordinators (5 new and 11 continuing)

Grassroots Exchange Network - Japan (GEN-J) Program: 127 people (120 invited and 7 dispatched)

(2) Grant programs

Special Initiatives: 6 (2 new and 4 continuing)

Regular Grants: 16 (8 new and 8 continuing)

CGP New York (CGPNY)

CGPNY discretionary grants: 18 (6 grassroots exchange, 4 intellectual exchange, 6 education and 2 Japanese gardens)

* Administered by the Japan Foundation Center for Global Partnership

Summary of the Japan Foundation Asia Center Programs

1. NIHONGO Partners Programs

Indonesia: 168
 Thailand: 127
 Viet Nam: 64
 Malaysia: 49
 Philippines: 14
 Myanmar: 18
 Cambodia: 1
 Singapore: 1
 Brunei: 1
 Laos: 4
 China: 32
 Taiwan: 36
 Total of 515 NIHONGO Partners sent to 505 schools
Asia in Resonance 2019: NIHONGO Partners symposium and related projects
 Japanese-Language Learners Invitation related with NIHONGO Partners Program: 50 Japanese-Language learners from 10 countries
 Counterpart Japanese-language teacher training in Japan: 80 teachers from 4 countries*
 Teachers at secondary schools in Thailand who received scholarships to visit Japan: 14 teachers*

2. Grassroots Exchange Programs

Cine Adobo Project
 Society for Asian Cinema Studies
 Match Flag Project
 HANDS! —Hope and Dreams— Project
 Singapore Fair (Rikuzentakata City) Youth Exchange Program
 Grant Programs: 25 grants

3. The Asia Center Fellowship Program

16 fellows

4. Asian Leadership Exchanges

...and Action! Asia: Exchange Program for Students in Film Studies (published a report)
 A Working Title: Training and Development Program for Film Screening Professionals (published a report)
 Performing Arts Presenters Invitation Program
 Short Term Invitation Program for Cultural Leaders
 Norliza Rofli (Malaysia)
 Asia Leadership Fellow Program (ALFP) Lecture Series
 Japan-ASEAN Media Forum 2019
 The Japan Foundation Winter Institute 2019**
 Travel grant for participants in the Association for Asian Studies (AAS) AAS-in-ASIA conference**
 Grant Programs: 4 grants**

5. Cultural Collaboration Programs

Awakenings: Art in Society in Asia 1960s-1990s (Korea and Singapore)
 Media Art Exchange Initiative
(Asian Meeting Festival 2019 (AMF 2019); Live Music Program: Imaginary Line; Exhibition: Open Possibilities: There is not only one neat way to imagine our futures (Singapore and Tokyo); The 4th International Symposium for Media Art "Open Media Culture: Collaborations, Networks, Exchange")
 Asian Art Archive (catalogs and reports, web archive)
 International Research Forum "Art Activities of Disabled People in Asia" (Bangkok)
Asia in Resonance 2019: The Breathing of Maps (Tokyo and Chiang Mai)
 Film Culture Exchange Projects with the 32nd Tokyo International Film Festival (*CROSSCUT ASIA #06: Fantastic Southeast Asia* and others)
 Visual Documentary Project 2019

Talents Tokyo 2019
 Focus on Asia Fukuoka International Film Festival 2019 (Featured regional films, "A Master Class in Filmmaking" by Brillante Ma. Mendoza and others)
 Film screening at *Indonesia and Thailand: Folklore and Fantasy in Cinema Asia in Resonance 2019: MASTERS OF SOUTHEAST ASIAN CINEMA* (screenings, talks, symposium and others)
Asia in Resonance 2019: SETAN JAWA –A Silent Film with a Live 3D Sound Concert
Asia in Resonance 2019: Fever Room by Apichatpong Weerasethakul
Asia in Resonance 2019: DANCE DANCE ASIA—Crossing the Movements in Tokyo 2019, Hanoi and Bangkok tour 2019
Asia in Resonance 2019: Asia in Resonance 2019 Gala Concert
Asia in Resonance 2019: Prathana – A Portrait of Possession, an international collaboration with Thailand directed by OKADA Toshiki
Asia in Resonance 2019: ASEAN-Japan Music Festival 2019 in VIETNAM —prayer for peace—
Asia in Resonance 2019: Symposium "Transnational Collaboration in Performing Arts - Sharing the Unseen Process and Archiving what will disappear"
 Performing Arts Meeting in Yokohama 2020 (TPAM 2020)
 Collaborative Project with SCOT (international collaboration with Indonesia *Dionysus and Journey of Life*)
 Cooperation with the *Tokyo Notes International ver.* directed by HIRATA Oriza
 Collaborative project with Kirari Fujimi: A new platform for performing arts creation in Asia (Philippine-Japan collaborative theater *KIN-BALL*)
 Festival/Tokyo 2019 *Transfield from Asia*
 APAF-Asian Performing Arts Farm 2019
Asia in Resonance 2019: A football exchange program "ASIAN ELEVEN" International Friendly Football Match "JapaFunCup"
 International Friendly Football Match "The Japan Foundation Bangkok Cup"
 JFA Collaborative Football Project
 Dispatch of Long-term Coaches: Brunei, Cambodia, Myanmar Philippines, Timor-Leste, Viet Nam
 Invitation: Cambodia (players and coaches), Malaysia (players) "International Coaching Course"
 J League Collaborative Football Project
 Dispatch of Short-term Coaches: Cambodia, Indonesia, Laos, Philippines, Thailand
 Invitation of ASEAN football league-related personnel
 Judo Exchange Program *JAPAN-ASEAN JITA-KYOEI PROJECT*
 The 6th Sanriku International Arts Festival
Sanriku×Asia Booklet Publishing Project
Asia in Resonance 2019: Earth Manual Project Disaster and Design: For Saving Lives
 EYES for Embracing Diversity (EYES project)
 Social Innovation Link (SOIL) program
 Exhibition for Historical Sources Under the Japanese Military Government in Indonesia
 Innovative City Forum 2019 Asia Center Session, "Reverse IDEA – Searching for New Coordinate Axes from Asian Dynamism"
 Exchange with Southeast Asian Muslim Youth (TAMU/Talk with Muslims series) "An Approach to Islam: Religion, Culture and Society"
 The International Symposium "Shared Values and Democracy in Asia 2019" (in Mongolia)
 Modern Southeast Asian Architectural Heritage Preservation Project***
 Asia Student Package Design Competition Project (ASPac)***
 Grant programs: 44 grants

* Administered by the Japanese-Language Group

** Administered by the Japanese Studies and Intellectual Exchange Program

*** Administered by the Arts and Culture Department

Financial Cooperation from the Private Sector

The Japan Foundation's international cultural exchange programs are made possible thanks to generous financial contributions from a wide range of private-sector entities, including companies, organizations and individuals.

The donation system and other aspects of private funding for FY2019 are explained below, along with a list of donors and programs supported with their funding.

1. Types of Financial Cooperation

(1) General Donations

General donations are used to fund the Japan Foundation's international cultural exchange programs.

i. General Donations System

General donations are received from companies, organizations and individuals. The amount and timing of the donation are up to the donor. Donors in FY2019 are listed on the following page under Donors for Program Expenses and Private Endowment Providers.

● Donations for program expenses

These donations fund the Japan Foundation's programs conducted in the same fiscal year as the donation. The donor can request the donation to be used for a specific project during the fiscal year.

● Donations for operational funds (private endowments)

These donations are deposited to the Japan Foundation's funds, and the accrued interest is used for program expenses in perpetuity. The FY2019 implementation of special programs established and named at the request of the benefactors in the past is outlined on the next page under Programs Supported by Private Endowments.

ii. Corporate Membership System (Supporting members)

Fixed donations are received from companies and organizations as annual membership dues. They are used to fund programs conducted in the same fiscal year. Donations are made in units of 100,000 JPY. General Members donate 100,000 JPY to 400,000 JPY, and Special Members donate 500,000 JPY or more annually. Membership benefits include invitations to various events of the Japan Foundation and a copy of The Japan Foundation Annual Report. Corporate members for FY2019 are listed on the next page under Corporate Members.

(2) Designated Donations

Financial contributions from individuals and corporations in Japan to support international cultural exchange programs in Japan and overseas are received by the Japan Foundation as donations to be used as a subsidy for applicable cultural exchange projects. This system makes donors eligible for tax benefits for their donations.

Applicable programs are international cultural exchange activities such as personnel exchanges, overseas Japanese studies and Japanese-language education programs, performances, exhibitions and seminars. Designated donations are reviewed by a screening committee of outside experts to decide whether to accept the donation. Programs funded by designated donations in FY2019 are listed on the next page under Programs Supported by Designated Donations.

(3) Other Types of Private Financial Support

Besides donations, the Japan Foundation receives private-sector financial support in various forms such as cooperation funds and grants. Examples of such support in FY2019 are listed on the next page under Primary Examples of Non-Donation Financial Support.

2. Tax Benefits for Donations

The Japan Foundation is a "Designated Public Benefit Organization" in accordance with Article 77 of the Order for Enforcement of the Corporation Tax Act and Article 217 of the Order for Enforcement of the Income Tax Act. This makes Japan-based donations to the Japan Foundation eligible for the following tax benefits.

(1) For Corporations

The total donation amount to Designated Public Benefit Organization or the maximum deductible donation amount to Designated Public Benefit Organization, whichever is smaller, is treated as a loss.

NB 1: If the total donation amount to Designated Public Benefit Organization is larger, the amount not treated as a loss (the amount exceeding the maximum deductible amount of donation to Designated Public Benefit Organizations) is included in the amount of normal donations. The maximum deductible amount of a donation is calculated as follows:

● Donations to Designated Public Benefit Organizations

(Maximum Deductible Donation Amount)

(Amount of capital x Number of months for the period/12 x 0.375% + Amount of income x 6.25%) x 1/2

● Normal donations

(Amount of capital x Number of months for the period/12 x 0.25% + Amount of income x 2.5%) x 1/4

(2) For Individuals

The total donation amount minus 2,000 JPY (up to 40% of the gross income) is tax deductible. Donations of inherited assets are also eligible for beneficial taxation treatment.

3. Donations Received in FY2019

| | Number | Amount (JPY) |
|------------------------|--------|----------------------|
| General donations | 47 | 105,309,210 |
| Supporting members | 33 | 6,850,000 |
| Donations for programs | 12 | 98,439,210 |
| Private endowments | 2 | 20,000 |
| Designated donations | 37 | 3,014,578,437 (NB 2) |

NB 2: From the designated donations received, 3,011,788,693 JPY plus the 39,499,952 JPY carried over from FY2018 were given as subsidies to 18 programs (see Programs Supported by Designated Donations on the next page). The remaining 42,289,696 JPY of the designated donations will be provided as subsidies to six programs in FY2020.

NB 3: From the establishment of the Japan Foundation in 1972 to the end of FY2019, the cumulative amount of general donations it has received was approximately 3,048,020,000 JPY and the cumulative amount of designated donations received was approximately 70,957,790,000 JPY.

NB 4: A total of 57,950,000 JPY of non-donations was received from the private sector in FY2019 as financial cooperation (cooperation funds, grants, etc.).

List of Donors, Contributors and Supported Programs in FY2019

Donors for Program Expenses

(Listed in random order and without honorifics. Programs applicable for contributions in parentheses)

Bravis International Limited. (Asia Students Package Design Competition (ASPaC) project)

Japan Tobacco Inc. (support for Japanese-language and Japanese studies education at Russian universities)

Kinoshita Group Co., Ltd. (performances at JAPAN NIGHT, an official program of *Japan 2019* and "TICAD7 LIVE HEART FOR AFRICA")

BOND CREATIVE CO., LTD. (ASPaC project)

Publishers Association for Cultural Exchange (Translation and Publishing Exchange Program)

TOKYO GAS Co., Ltd. (Southeast Asia Japanese Education Support Program)

Sun Investment Inc. (The 60th International Speech Contest in Japanese)

All Nippon Airways Co., Ltd. (*The Life of Animals in Japanese Art*, an official program of *Japan 2019*)

BlueRise Partners Group Co. Ltd., KUME Makoto and four individuals (General program expenses)

Private Endowment Providers

Two individuals

Programs Supported by Private Endowments

(Special programs established and named at the request of the benefactor)

Takasago Thermal Engineering Japanese Studies Fellowship

The benefactor is Takasago Thermal Engineering Co., Ltd.

WATANABE Ken Japanese Studies Fellowship

The benefactor is Mr. WATANABE Yukinobu, the father of Foreign Ministry worker Mr. WATANABE Ken who died in a traffic accident while training in the U.S.

Corporate Members (As of end FY2019, in alphabetical order)

(1) Special Members

Mizuho Bank, Ltd.; MUFG Bank, Ltd.; Shochiku Co., Ltd.; SMBC Nikko Securities Inc.

(2) General Members

All Japan Kendo Federation; Asuka Foundation; Bonjinsha Inc.; Daiichi Seiwa Jimusho Co., Ltd.; Daikin Industries, Ltd.; Daiwa Securities Co. Ltd.; Fuji Xerox Co., Ltd.; Hitachi, Ltd.; Idemitsu Kosan Co., Ltd.; Ikenobo; Japan International Cooperation Center; Katolec Corp.; Kodansha Ltd.; Kodokan Judo Institute; Kokusai Service Agency; Komazawa University; Mitsubishi UFJ Morgan Stanley Securities Co., Ltd.; Mori Building Co., Ltd.; Motion Picture Producers Association of Japan, Inc.; NHK International, Inc.; Nippon Origami Association; Nomura Securities Co., Ltd.; Shiseido Co., Ltd.; Shorinji Kempo Organization; Starlanes Travel Service Corp.; Sumitomo Mitsui Banking Corp.; Tokyo Business Service Co., Ltd.; Urasenke Konnichian Foundation; and one other corporate member

Programs Supported by Designated Donations

(Country of program implementation in parentheses. Listed in random order)

Asian University for Women Scholarship Program (Bangladesh); CWAJ Cultural Exchange Scholarship Program for Women (Japan and U.S.)/ Indiana University Japan Scholarship (U.S.); Mikasanomiya Foundation Fundraising Activities (Turkey); University of Michigan Law School Fellowship Fund (U.S.); Nagashima Ohno & Tsunematsu Program for Japanese Law and Culture (U.S.); The Tadashi Yanai Initiative Global Japan Humanities Project (U.S.); LSH Asia Scholarship (Japan); Balkan Chamber Orchestra 2019 (Japan); Shitennoji Wasso 2019 (Japan); Music from Japan 45th Anniversary Festival Artist Residence V (U.S.); Japan-Korea Exchange Festival Matsuri 2019 in Tokyo (Japan); Kuromori Kabuki Performance in Poland (Poland); The TOYAMA World Festival of Children's Theater in 2020- The 4th World Festival of Children's Performing Arts in Toyama (Japan); The Mahabharata—Chapter of Desire/Chapter of Tempest— (Japan); International Law Association 79th Biennial Conference (Japan); Inami International Wooden Sculpture Camp in Nanto City 2019 (Japan); Portland Japanese Garden Expansion Project (U.S.)

Primary Examples of Non-Donation Financial Support

Window Research Institute

Sponsorship for the Japan Pavilion at the 58th International Art Exhibition, *La Biennale di Venezia* in 2019

Ishibashi Foundation

Support for the Ishibashi Foundation and The Japan Foundation Art Curator Exchange Program, Ishibashi Foundation/The Japan Foundation Fellowship for Research on Japanese Art, and the Japan Pavilion at the 17th International Architecture Exhibition, *La Biennale di Venezia* in 2021

Shoyu Club

Provision of Japanese-language educational materials and equipment to Hue University College of Foreign Languages and Ha Long University, and support for the "Japanese Language & Culture Japan Study Tour for Vietnamese young researchers"

The Asian Foundation for International Scholarship Interchange

Sponsorship for the Japanese Language Festival 2019

The Kamenori Foundation

Support for the Nihongo-jin Forum, etc.

Financial Statements

Financial Results for FY2019 (April 1, 2019 – March 31, 2020)

(Unit: JPY)

| Item | Arts and cultural exchange programs | | | | Japanese-language education programs | | | | Japanese studies and intellectual exchange programs | | | |
|---|-------------------------------------|----------------------|--------------------|-------|--------------------------------------|----------------------|----------------------|-------|---|----------------------|----------------------|-------|
| | Budget | Result | Difference | Notes | Budget | Result | Difference | Notes | Budget | Result | Difference | Notes |
| ▼ Revenues | | | | | | | | | | | | |
| Government subsidies for operational expenses | 2,960,479,000 | 2,960,479,000 | 0 | | 6,003,077,000 | 6,003,077,000 | 0 | | 1,083,534,000 | 1,083,534,000 | 0 | |
| Facility maintenance subsidies | 0 | 0 | 0 | | 0 | 17,499,240 | 17,499,240 | *2 | 0 | 0 | 0 | |
| Investment revenue | 145,374,000 | 143,959,156 | (1,414,844) | | 0 | 7,593,755 | 7,593,755 | | 729,072,000 | 586,384,934 | (142,687,066) | *4 |
| Donation revenue | 3,676,000 | 43,918,064 | 40,242,064 | | 22,597,000 | 24,320,363 | 1,723,363 | | 24,386,000 | 24,223,936 | (162,064) | |
| Income from commissioned projects | 512,000 | 0 | (512,000) | | 20,941,000 | 26,849,600 | 5,908,600 | | 0 | 0 | 0 | |
| Income from reversal of Asia Center programs fund | 0 | 0 | 0 | | 0 | 0 | 0 | | 0 | 0 | 0 | |
| Other revenue | 24,406,000 | 78,827,752 | 54,421,752 | | 1,464,832,000 | 1,451,537,002 | (13,294,998) | | 55,117,000 | 39,584,823 | (15,532,177) | |
| Income from reversal of reserve carried over from previous mid-term target period | 233,645,000 | 527,059,817 | 293,414,817 | *1 | 0 | 0 | 0 | | 0 | 0 | 0 | |
| Total | 3,368,092,000 | 3,754,243,789 | 386,151,789 | | 7,511,447,000 | 7,530,876,960 | 19,429,960 | | 1,892,109,000 | 1,733,727,693 | (158,381,307) | |
| ▼ Expenditures | | | | | | | | | | | | |
| Operating expenses | 3,369,291,000 | 2,949,226,669 | 420,064,331 | *3 | 7,355,257,000 | 5,827,050,034 | 1,528,206,966 | *3 | 1,791,274,000 | 1,977,649,802 | (186,375,802) | *5 |
| Facility maintenance expenses | 0 | 0 | 0 | | 0 | 17,499,240 | (17,499,240) | *2 | 0 | 0 | 0 | |
| General and administrative expenses | 0 | 0 | 0 | | 0 | 0 | 0 | | 0 | 0 | 0 | |
| Salaries and wages | 0 | 0 | 0 | | 0 | 0 | 0 | | 0 | 0 | 0 | |
| Supplies | 0 | 0 | 0 | | 0 | 0 | 0 | | 0 | 0 | 0 | |
| Reserve funds | 0 | 0 | 0 | | 0 | 0 | 0 | | 0 | 0 | 0 | |
| Total | 3,369,291,000 | 2,949,226,669 | 420,064,331 | | 7,355,257,000 | 5,844,549,274 | 1,510,707,726 | | 1,791,274,000 | 1,977,649,802 | (186,375,802) | |

| Item | Survey, research and information service programs | | | | Asia Center Programs | | | | Overseas programs | | | |
|---|---|--------------------|--------------------|-------|----------------------|----------------------|----------------------|-------|----------------------|----------------------|-------------------|-------|
| | Budget | Result | Difference | Notes | Budget | Result | Difference | Notes | Budget | Result | Difference | Notes |
| ▼ Revenues | | | | | | | | | | | | |
| Government subsidies for operational expenses | 661,671,000 | 661,671,000 | 0 | | 0 | 0 | 0 | | 3,998,407,000 | 3,998,407,000 | 0 | |
| Facility maintenance subsidies | 0 | 0 | 0 | | 0 | 0 | 0 | | 0 | 0 | 0 | |
| Investment revenue | 0 | 16,815 | 16,815 | | 0 | 0 | 0 | | 0 | 104,544,060 | 104,544,060 | *4 |
| Donation revenue | 928,000 | 9,013 | (918,987) | | 0 | 11,000,000 | 11,000,000 | | 3,427,000 | 454,112 | (2,972,888) | |
| Income from commissioned projects | 0 | 0 | 0 | | 0 | 0 | 0 | | 0 | 0 | 0 | |
| Income from reversal of Asia Center programs fund | 0 | 0 | 0 | | 3,895,745,000 | 3,248,078,947 | (647,666,053) | *6 | 0 | 0 | 0 | |
| Other revenue | 649,000 | 514,092 | (134,908) | | 0 | 0 | 0 | | 88,881,000 | 48,823,736 | (40,057,264) | |
| Income from reversal of reserve carried over from previous mid-term target period | 0 | 0 | 0 | | 0 | 0 | 0 | | 0 | 0 | 0 | |
| Total | 663,248,000 | 662,210,920 | (1,037,080) | | 3,895,745,000 | 3,259,078,947 | (636,666,053) | | 4,090,715,000 | 4,152,228,908 | 61,513,908 | |
| ▼ Expenditures | | | | | | | | | | | | |
| Operating expenses | 661,671,000 | 602,809,178 | 58,861,822 | *6 | 3,895,745,000 | 3,259,078,947 | 636,666,053 | *6 | 4,102,920,000 | 4,052,704,688 | 50,215,312 | |
| Facility maintenance expenses | 0 | 0 | 0 | | 0 | 0 | 0 | | 0 | 0 | 0 | |
| General and administrative expenses | 0 | 0 | 0 | | 0 | 0 | 0 | | 0 | 0 | 0 | |
| Salaries and wages | 0 | 0 | 0 | | 0 | 0 | 0 | | 0 | 0 | 0 | |
| Supplies | 0 | 0 | 0 | | 0 | 0 | 0 | | 0 | 0 | 0 | |
| Reserve funds | 0 | 0 | 0 | | 0 | 0 | 0 | | 0 | 0 | 0 | |
| Total | 661,671,000 | 602,809,178 | 58,861,822 | | 3,895,745,000 | 3,259,078,947 | 636,666,053 | | 4,102,920,000 | 4,052,704,688 | 50,215,312 | |

| Item | Cooperation in cultural exchange facilities programs | | | | Common expenses | | | | Total | | | |
|---|--|----------------------|------------------------|-------|----------------------|----------------------|--------------------|-------|-----------------------|-----------------------|----------------------|-------|
| | Budget | Result | Difference | Notes | Budget | Result | Difference | Notes | Budget | Result | Difference | Notes |
| ▼ Revenues | | | | | | | | | | | | |
| Government subsidies for operational expenses | 0 | 0 | 0 | | 1,753,438,000 | 1,753,438,000 | 0 | | 16,460,606,000 | 16,460,606,000 | 0 | |
| Facility maintenance subsidies | 0 | 0 | 0 | | 0 | 0 | 0 | | 0 | 17,499,240 | 17,499,240 | |
| Investment revenue | 0 | 342,760 | 342,760 | | 11,000,000 | 24,760,133 | 13,760,133 | | 885,446,000 | 867,601,613 | (17,844,387) | |
| Donation revenue | 269,763,000 | 3,014,762,162 | 2,744,999,162 | *7 | 677,000 | 1,179,997 | 502,997 | | 325,454,000 | 3,119,867,647 | 2,794,413,647 | |
| Income from commissioned projects | 0 | 0 | 0 | | 0 | 0 | 0 | | 21,453,000 | 26,849,600 | 5,396,600 | |
| Income from reversal of Asia Center programs fund | 0 | 0 | 0 | | 0 | 0 | 0 | | 3,895,745,000 | 3,248,078,947 | (647,666,053) | |
| Other revenue | 0 | 0 | 0 | | 9,832,000 | 3,498,130 | (6,333,870) | | 1,643,717,000 | 1,622,785,535 | (20,931,465) | |
| Income from reversal of reserve carried over from previous mid-term target period | 0 | 0 | 0 | | 0 | 0 | 0 | | 233,645,000 | 527,059,817 | 293,414,817 | |
| Total | 269,763,000 | 3,015,104,922 | 2,745,341,922 | | 1,774,947,000 | 1,782,876,260 | 7,929,260 | | 23,466,066,000 | 25,890,348,399 | 2,424,282,399 | |
| ▼ Expenditures | | | | | | | | | | | | |
| Operating expenses | 277,606,000 | 3,022,587,197 | (2,744,981,197) | *7 | 0 | 0 | 0 | | 21,453,764,000 | 21,691,106,515 | (237,342,515) | |
| Facility maintenance expenses | 0 | 0 | 0 | | 0 | 0 | 0 | | 0 | 17,499,240 | (17,499,240) | |
| General and administrative expenses | 0 | 0 | 0 | | 2,453,848,000 | 2,161,260,513 | 292,587,487 | | 2,453,848,000 | 2,161,260,513 | 292,587,487 | |
| Salaries and wages | 0 | 0 | 0 | | 549,794,000 | 588,620,832 | (38,826,832) | | 549,794,000 | 588,620,832 | (38,826,832) | |
| Supplies | 0 | 0 | 0 | | 1,549,719,000 | 1,572,639,681 | (22,920,681) | | 1,549,719,000 | 1,572,639,681 | (22,920,681) | |
| Reserve funds | 0 | 0 | 0 | | 354,335,000 | 0 | 354,335,000 | | 354,335,000 | 0 | 354,335,000 | |
| Total | 277,606,000 | 3,022,587,197 | (2,744,981,197) | | 2,453,848,000 | 2,161,260,513 | 292,587,487 | | 23,907,612,000 | 23,869,866,268 | 37,745,732 | |

*1. Increase in expenditures due to addition and expansion of some projects, and other factors

*2. Due to the settlement of the facility maintenance subsidies set in the FY2018 supplementary budget

*3. Due to the fact that the implementation of some programs was shifted to the following fiscal year or later, and other factors

*4. While the Center for Global Partnership is funded by investment revenue, a portion of the funding was paid out from expense for overseas programs.

*5. Due to the expenditure of carrying forward the budget from FY2018 which is outside the budget for income, and other factors

*6. Decrease in expenditures due to cancellation and downsizing of some projects, and other factors

*7. Due to increase in designated donations received and compensated expenditures, and other factors

Balance Sheet (as of March 31, 2020)

(Unit: JPY)

| Assets | | |
|--|-----------------|-----------------------|
| I Current assets | | |
| Cash and deposits | | 15,198,765,663 |
| Marketable securities | | 8,799,871,867 |
| Advance payments | | 204,941,812 |
| Prepaid expenses | | 130,890,959 |
| Accrued income | | 168,934,683 |
| Accounts receivable | | 766,622,421 |
| Contra accounts for allowance for bonuses ^(Note) | | 164,804,078 |
| Other current assets | | 54,379,761 |
| Total current assets | | 25,489,211,244 |
| II Fixed assets | | |
| 1 Tangible fixed assets | | |
| Buildings | 13,529,339,850 | |
| Accumulated depreciation | (6,629,894,593) | 6,899,445,257 |
| Structures | 312,156,911 | |
| Accumulated depreciation | (297,165,948) | 14,990,963 |
| Machinery and equipment | 57,719,952 | |
| Accumulated depreciation | (24,587,300) | 33,132,652 |
| Vehicles and transport equipment | 134,254,904 | |
| Accumulated depreciation | (84,950,586) | 49,304,318 |
| Tools, equipment and fixtures | 1,429,303,719 | |
| Accumulated depreciation | (1,119,405,467) | 309,898,252 |
| Art objects | 562,949,588 | |
| Accumulated depreciation | (24,361,193) | 538,588,395 |
| Land | | 63,515,000 |
| Construction in progress | | 179,245,617 |
| Total tangible fixed assets | | 8,088,120,454 |
| 2 Intangible fixed assets | | |
| Software | | 317,175,115 |
| Telephone subscription rights | | 441,000 |
| Total intangible fixed assets | | 317,616,115 |
| 3 Investments and other assets | | |
| Investment securities | | 49,463,942,007 |
| Long-term time deposits | | 1,700,000,000 |
| Deposits and bonds | | 1,032,892,828 |
| Contra accounts for allowance for retirement benefits ^(Note) | | 2,763,299,709 |
| Total investments and other assets | | 54,960,134,544 |
| Total fixed assets | | 63,365,871,113 |
| Total assets | | 88,855,082,357 |
| Liabilities | | |
| I Current liabilities | | |
| Operational grant liabilities ^(Note) | | 7,255,026,026 |
| Deposits subsidies and others ^(Note) | | 2,347,721,741 |
| Donations received ^(Note) | | 95,940,287 |
| Amount in arrears | | 974,728,968 |
| Advances received | | 12,601,529 |
| Deposits payable | | 18,771,736 |
| Deferred revenue | | 8,220,559 |
| Lease liabilities | | 2,179,174 |
| Allowance | | |
| Allowance for bonuses | 180,780,475 | 180,780,475 |
| Asset retirement obligations | | 109,670,000 |
| Total current liabilities | | 11,005,640,495 |
| II Fixed liabilities | | |
| Contra accounts for assets ^(Note) | | |
| Contra accounts for assets funded by operational grants | 1,388,512,674 | |
| Contra accounts for assets funded by subsidies | 3,049,238 | |
| Contra accounts for assets funded by donations | 2,543,156 | |
| Contra accounts for assets for construction in progress funded by operational grants | 1,045,617 | 1,395,150,685 |
| Allowance | | |
| Allowance for retirement benefits | | 2,763,299,709 |
| Asset retirement obligations | | 21,844,886 |
| Total fixed liabilities | | 4,180,295,280 |
| Total liabilities | | 15,185,935,775 |
| Net assets | | |
| I Capital stock | | |
| Government investment | | 77,729,095,177 |
| Total capital stock | | 77,729,095,177 |
| II Capital surplus | | |
| Capital surplus | | 535,143,769 |
| Accumulated other administrative costs ^(Note) | | (7,180,290,552) |
| Accumulated depreciation (loss) | | (6,483,133,301) |
| Accumulated impairment losses (loss) | | (126,000) |
| Accumulated interest expenses (loss) | | (5,384,445) |
| Accumulated gains (losses) from sale and disposal (loss) | | (691,646,806) |
| Endowments from private sector | | 908,026,787 |
| Total capital surplus | | (5,737,119,996) |
| III Retained earnings | | |
| Reserve | | 1,218,164,198 |
| Reserve carried over from previous mid-term target period ^(Note) | | 132,630,684 |
| Unappropriated profit for the term | | 311,164,876 |
| (Of which: Gross profit for the term) | | 311,164,876 |
| Total retained earnings | | 1,661,959,758 |
| IV Valuation and translation adjustments | | |
| Deferred gains or losses on hedges | | 15,211,643 |
| Total valuation and translation adjustments | | 15,211,643 |
| Total net assets | | 73,669,146,582 |
| Total liabilities and net assets | | 88,855,082,357 |

(Note) These are the accounts associated with the accounting procedures specific to Incorporated Administrative Agency.

Profit and Loss Statement (April 1, 2019 – March 31, 2020)

(Unit: JPY)

| Ordinary expenses | | |
|--|---------------|--------------------|
| Arts and cultural exchange programs | | 2,926,775,050 |
| Japanese-language education programs | | 5,915,569,096 |
| Japanese studies and intellectual exchange programs | | 1,978,137,595 |
| Survey, research and information service programs | | 551,780,420 |
| Asia Center programs | | 3,258,438,260 |
| Overseas programs | | 4,029,886,379 |
| Cooperation in cultural exchange facilities programs | | 3,022,587,197 |
| General and administrative expenses | | 1,650,412,724 |
| Financial expenses | | 352,969 |
| Miscellaneous losses | | 404,134,697 |
| Total ordinary expenses | | 23,738,074,387 |
| Ordinary income | | |
| Income from operational grants ^(Note) | | 13,797,626,552 |
| Income from investments | | 857,383,526 |
| Income from commissioned projects | | 25,079,990 |
| Income from subsidies ^(Note) | | 3,243,434,028 |
| Income from facility fees ^(Note) | | 1,299,240 |
| Income from donations ^(Note) | | |
| Income from donations | 83,034,750 | |
| Income from designated donations | 3,011,788,693 | 3,094,823,443 |
| Reversal of contra accounts ^(Note) | | |
| Reversal of contra accounts for assets funded by operational grants | 303,206,878 | |
| Reversal of contra accounts for assets funded by subsidies | 4,004,232 | |
| Reversal of contra accounts for assets funded by donations | 997,800 | 308,208,910 |
| Income related to contra accounts for allowance for bonuses ^(Note) | | 164,804,078 |
| Income related to contra accounts for allowance for retirement benefits ^(Note) | | 248,193,285 |
| Financial income | | |
| Interest received | 397,059 | 397,059 |
| Sundry income | | |
| Income from the Japanese-Language Proficiency Test | 1,372,914,522 | |
| Other sundry income | 408,217,120 | 1,781,131,642 |
| Total ordinary income | | 23,522,381,753 |
| Ordinary loss | | 215,692,634 |
| Extraordinary losses | | |
| Loss on retirement of fixed assets | | 2,167,856 |
| Impairment loss | | 9,344,230 |
| Provision of allowance for bonuses due to revision of accounting standards ^(Note) | | 172,850,558 |
| Retirement benefit expenses due to revision of accounting standards ^(Note) | | 2,704,538,975 |
| | | 2,888,901,619 |
| Extraordinary profits | | |
| Reversal of contra accounts for assets funded by operational grants ^(Note) | | 11,079,270 |
| Reversal of contra accounts for assets funded by subsidies ^(Note) | | 93,915 |
| Profits on sales of fixed assets | | 136,594 |
| Income related to contra accounts for allowance for bonuses ^(Note) | | 172,850,558 |
| Income related to contra accounts for reserve for retirement allowance ^(Note) | | 2,704,538,975 |
| | | 2,888,699,312 |
| Net loss for the term | | 215,894,941 |
| Reversal of reserve carried over from previous mid-term target period ^(Note) | | 527,059,817 |
| Gross profit for the term | | 311,164,876 |

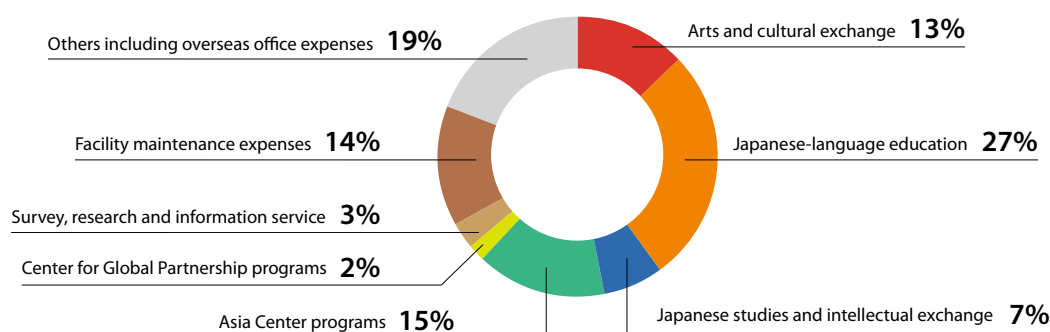
(Note) These are the accounts associated with the accounting procedures specific to Incorporated Administrative Agency.

Statement of Profit Disposition (July 20, 2020)

(Unit: JPY)

| I Unappropriated profit at the end of the term | | 311,164,876 |
|--|--|-------------|
| Gross profit for the term | | 311,164,876 |
| II Appropriation of retained earnings | | |
| Reserve | | 311,164,876 |
| | | 311,164,876 |

FY2019 expenditure composition ratio by project field



General administrative expenses not included

The Japan Foundation's Global Network



Overseas offices

- 1 Italy**
The Japan Cultural Institute in Rome
URL: <https://www.jfroma.it/>
(Italian/Japanese)
- 2 Germany**
The Japan Cultural Institute in Cologne
URL: <https://www.jki.de/>
(German/Japanese)
- 3 France**
The Japan Cultural Institute in Paris
URL: <https://www.mcjp.fr/>
(French/Japanese)
- 4 Korea**
The Japan Foundation, Seoul
URL: <https://www.jpfor.kr/>
(Korean/Japanese)
- 5 China**
The Japan Foundation, Beijing
URL: <https://www.jpfbj.cn/>
(Chinese)
- 6 Indonesia**
The Japan Foundation, Jakarta
URL: <https://www.jpfor.id/>
(Indonesian/English/Japanese)
- 7 Thailand**
The Japan Foundation, Bangkok
URL: <https://www.jfbkk.or.th/>
(Thai/English/Japanese)
- 8 Philippines**
The Japan Foundation, Manila
URL: <https://www.jfmo.org.ph/>
(English)
- 9 Malaysia**
The Japan Foundation, Kuala Lumpur
URL: <https://www.jfkl.org.my/>
(English)
- 10 Myanmar**
The Japan Foundation, Yangon
URL: <https://yg.jpf.go.jp/>
(Burmese/English)
- 11 India**
The Japan Foundation, New Delhi
URL: <https://www.jfindia.org.in/>
(English)
- 12 Australia**
The Japan Foundation, Sydney
URL: <https://www.jpf.org.au/>
(English)
- 13 Canada**
The Japan Foundation, Toronto
URL: <https://www.jftor.org/>
(English)
- 14 U.S.**
The Japan Foundation, New York
Center for Global Partnership (NY)
URL: <https://www.jfny.org/>
(English)
- 15 U.S.**
The Japan Foundation, Los Angeles
URL: <https://www.jflalc.org/>
(English)
- 16 Mexico**
The Japan Foundation, Mexico
URL: <https://www.fjmex.org/>
(Spanish)
- 17 Brazil**
The Japan Foundation, São Paulo
URL: <https://fjso.org.br/>
(Portuguese)
- 18 U.K.**
The Japan Foundation, London
URL: <https://www.jpf.org.uk/>
(English)
- 19 Spain**
The Japan Foundation, Madrid
URL: <https://www.fundacionjapon.es/>
(Spanish/Japanese)
- 20 Hungary**
The Japan Foundation, Budapest
URL: <https://www.japanalapitvany.hu/>
(Hungarian/English/Japanese)
- 21 Russia**
The Japanese Culture Department
"The Japan Foundation" of the All-Russia
State Library for Foreign Literature
URL: <https://www.jpfmw.ru/>
(Russian/Japanese)
- 22 Egypt**
The Japan Foundation, Cairo
- 23 Vietnam**
The Japan Foundation Center for
Cultural Exchange in Vietnam
URL: <https://jpf.org.vn/>
(Vietnamese/Japanese)
- 24 Cambodia**
The Japan Foundation Asia Center,
Phnom Penh Liaison Office
URL: <https://jfpfn.org/>
(Khmer/English/Japanese)
- 25 Laos**
The Japan Foundation Asia Center,
Vientiane Liaison Office
URL: <https://jfacvt.la/>
(Laos/English)

Affiliated organizations and branch in Japan

- The Japan Foundation
Japanese-Language Institute, Urawa**
5-6-36 Kita-Urawa, Urawa-ku Saitama City,
Saitama, 330-0074, Japan
Phone: 81-48-834-1180 Fax: 81-48-834-1170
URL: <https://www.jpf.go.jp/e/urawa/index.html>
■ Library
Phone: 81-48-834-1185 Fax: 81-48-830-1588
URL: https://www.jpf.go.jp/e/urawa/e_library/e_library.html
- The Japan Foundation
Japanese-Language Institute, Kansai**
3-14 Rinku Port Kita, Tajiri-cho, Sennan-gun,
Osaka, 598-0093, Japan
Phone: 81-72-490-2600 Fax: 81-72-490-2800
URL: https://kansai.jpf.go.jp/index_en.html
■ Library
Phone: 81-72-490-2605 Fax: 81-72-490-2805
URL: <https://kansai.jpf.go.jp/en/library/>
- The Japan Foundation Kyoto Office**
3rd Floor, Kyoto International Community House,
2-1 Torii-cho, Awataguchi, Sakyo-ku Kyoto,
606-8436, Japan
Phone: 81-75-762-1136 Fax: 81-75-762-1137
URL: <https://www.jpf.go.jp/e/world/kyoto.html>

Committees (FY2019)

The persons listed below act as members for the Japan Foundation's committees.
(In alphabetical order, names listed without honorifics, titles and positions as of FY2019)

Advisory Committee for The Japan Foundation

(Commission of Advisory Committee ended as of April 30, 2019)

CHINO Keiko

Guest Columnist, The Sankei Shimbun

HOSOYA Yuichi

Professor, Faculty of Law, Keio University

IKEUCHI Satoshi

Professor, Research Center for Advanced Science and Technology, The University of Tokyo

IOKIBE Makoto

Chancellor, the University of Hyogo; President, Hyogo Earthquake Memorial 21st Century Research Institute

KAWASHIMA Shin

Professor, Graduate School of Arts and Sciences, The University of Tokyo

KUBO Fumiaki

Professor, Graduate Schools for Law and Politics, The University of Tokyo

MIYAMOTO Amon

Stage Director

NAGAI Taeko

Director, Setagaya Arts Foundation; President, Japanese Centre of International Theatre Institute

SAKODA Kumiko

Deputy Executive Director, Hiroshima University; Professor (Special Appointment), Morito Institute of Global Higher Education

TATEHANA Akira

President, Tama Art University; Director, The Museum of Modern Art, Saitama

WATANABE Yasushi

Professor, Faculty of Environment and Information Studies, Keio University

American Advisory Committee for Japanese Studies

William Bodiford

University of California, Los Angeles (Religious Studies)

Michael Bourdags

University of Chicago (Literature)

Lee Branstetter

Carnegie Mellon University (Economics)

Julie Nelson Davis

University of Pennsylvania (History of Art)

Alisa Freedman

University of Oregon (Modern Japanese Literature)

Andrew Gordon

Harvard University (History)

Eiko Ikegami

The New School (Sociology)

R. Keller Kimbrough

University of Colorado Boulder (Literature)

Patricia Maclachlan

University of Texas at Austin (Political Science)

Laura Miller

University of Missouri–St. Louis (Anthropology)

Mari Noda

Ohio State University (Linguistics and Language Pedagogy)

Morgan Pitelka

University of North Carolina at Chapel Hill (History)

Steven Vogel

University of California, Berkeley (Political Science)

Kären Wigen

Stanford University (Geography and History)

Christine Yano

University of Hawaii at Manoa (Anthropology and Cultural Studies)

Advisory Committee of The Japan Cultural Institute in Paris

● From France

Jean-Louis Beffa

Honorary Chairman, Saint Gobain

Augustin Berque

Retired Professor, L'Ecole des Hautes Etudes en Science Sociales (EHESS)

Philippe Faure

Former French Ambassador to Japan

André Larqué

Honorary Director, Chatelet Theatre

Jean Maheu

Honorary Director, Theatre de la Ville

Jean-Robert Pitte

Chairman, French Geographical Society

Christian Sautter

Former Minister of the Economy, Finance and Industry

Louis Schweitzer

Special Representative of the Minister of Foreign Affairs of Europe for France-Japan Partnership

Diane de Selliers

President, Diane de Selliers Press

● From Japan

HAYAMA Reiko

Architect

HORIBA Atsushi

Chairman and Group CEO, Horiba, Ltd.

ITO Junji

Art Critic; Administrative Professor, Tokyo University of the Arts Public Collaboration Center

KASHIWAKURA Yasuo

Professor Emeritus, The Open University of Japan

MATSUURA Koichiro

Former Director-General of UNESCO

NISHIGAKI Toru

Professor Emeritus, The University of Tokyo; Professor, Tokyo Keizai University

OGINO Anna

Author; Professor, Faculty of Letters, Keio University

OHYAGI Shigeo

Advisor, TEIJIN LIMITED

SAKAI Tadayasu

Director, Setagaya Art Museum

TSUJIHARA Noboru

Novelist; Director, Kanagawa Museum of Modern Literature

The Japan Foundation Asia Center Advisory Committee

● From Japan

CHIBANA Kurara

Model; Ambassador of Japan, World Food Programme (WFP)

HASEGAWA Michiko

Professor Emeritus, Saitama University

INOKO Toshiyuki

CEO, teamLab Inc.

INOUE Hiroshi

Advisor, Tokyo Broadcasting System Television, Inc.

ISHII Eriko

Professor, Tokyo Women's Christian University; Chairperson, The Society for Teaching Japanese as a Foreign Language

KATO Masaya

Actor

KOSHINO Junko

Designer

MIYASAKO Masaaki

Professor, Tokyo University of the Arts; Japanese-style Painter

SAKOMOTO Jay

President, Shochiku Co., Ltd.

TORII Shingo

Vice Chairman of the Board, Suntory Holdings Ltd.

YAMAUCHI Masayuki (Chairperson)

Professor Emeritus, The University of Tokyo

● From ASEAN

Dato Paduka Hamdillah H A Wahab

(Brunei) Founding Director, Brunei-Japan Friendship Association (BJFA)

Pou Sothirak

(Cambodia) Executive Director, The Cambodian Institute for Cooperation and Peace; Government Advisor

Riri Riza

(Indonesia) Film Director

Phonethpvixay Saythilath

(Laos) Singer; Director, Kaona Entertainment Co., Ltd.

Datuk Lat

(Malaysia) Cartoonist

Lahpai Seng Raw

(Myanmar) Founder and Former Director, Metta Development Foundation

Ambeth R. Ocampo

(Philippines) Associate Professor, Department of History, Ateneo de Manila University

Goh Ching Lee

(Singapore) Founder, Executive and Artistic Director, CultureLink Singapore

Kitti Prasirtsuk

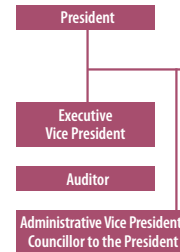
(Thailand) Vice Rector for International Affairs, Thammasat University

Nguyen Van Chinh

(Vietnam) Associate Professor, Head, Department of Anthropology, University of Social Sciences and Humanities, Hanoi

Organization

As of October 1, 2020



| Headquarters | |
|---|---|
| General Affairs Department | General Affairs Division Information Disclosure Office Security Management Office Personnel Division Remuneration and Personnel Evaluation Office Branch Offices Division Office for the Japanese Cultural Institute in Paris Information Systems Division |
| Financial Affairs Department | Budget and Finance Division Budgetary Control Office Accounting and Contract Managing Division |
| Planning Department | Policy Planning Division Program Planning and Coordination Division |
| Arts and Culture Group | |
| Arts and Culture Department | Planning and Coordination Section Performing Arts Section Visual Arts Section |
| Film and Broadcast Media Department | Film Section Broadcast Media Section |
| The Japan Foundation China Center | |
| Japanese-Language Group | |
| Japanese-Language Department I | Planning and Coordination Section International Operations Section I International Operations Section II |
| Japanese-Language Department II | Planning and Development Section |
| Center for Japanese-Language Testing | Test Operation Section Test Development Section |
| Japanese Studies and Intellectual Exchange Group | |
| Japanese Studies and Intellectual Exchange Department | Planning and Coordination/Americas Section Asia and Oceania Section Europe, Middle East and Africa Section |
| The Japan Foundation Center for Global Partnership | |
| Youth Exchange Bureau | |
| The Japan Foundation Asia Center | Planning and Coordination Section Japanese Language Program Section I Japanese Language Program Section II Arts, Culture and Exchange Section I Arts, Culture and Exchange Section II |
| Communication Center | |
| Audit Bureau | |
| Affiliated Organizations | |
| Japanese-Language Group | |
| The Japan Foundation Japanese-Language Institute, Urawa | Teachers Training Section Research and Development Section |
| The Japan Foundation Japanese-Language Institute, Kansai | Educational Training Section Educational Media Development Section |
| Branch | |
| The Japan Foundation Kyoto Office | |
| Overseas Offices | |
| The Japan Cultural Institute in Rome The Japan Cultural Institute in Cologne The Japan Cultural Institute in Paris The Japan Foundation, Seoul The Japan Foundation, Beijing The Japan Foundation, Jakarta The Japan Foundation, Bangkok The Japan Foundation, Manila The Japan Foundation, Kuala Lumpur The Japan Foundation, Yangon The Japan Foundation, New Delhi The Japan Foundation, Sydney The Japan Foundation, Toronto The Japan Foundation, New York The Japan Foundation, Los Angeles The Japan Foundation, Mexico The Japan Foundation, São Paulo The Japan Foundation, London The Japan Foundation, Madrid The Japan Foundation, Budapest The Japanese Culture Department "Japan Foundation" of the All-Russia State Library for Foreign Literature The Japan Foundation, Cairo The Japan Foundation Center for Cultural Exchange in Vietnam The Japan Foundation Asia Center, Phnom Penh Liaison Office The Japan Foundation Asia Center, Vientiane Liaison Office | |

Resources

Websites and social media

The Japan Foundation provides a wealth of information and resources online, including information about our programs and upcoming events, how to apply to participate in various programs, Japanese-language learning materials, past survey reports, and links to our overseas offices on the Japan Foundation website.

Japan Foundation official website

<https://www.jpf.go.jp/e/>



Japan Foundation official social media

Facebook



<https://www.facebook.com/TheJapanfoundation>

Twitter



<https://twitter.com/japanfoundation>

Web magazine

Wochi Kochi Magazine

<https://www.wochikochi.jp/english/>



The Japan Foundation Library (in the headquarters office)

<https://www.jpf.go.jp/e/about/jfic/lib/index.html>

Facebook



<https://www.facebook.com/JFICLibrary>

Program-specific websites

Arts and Cultural Exchange

[Performing Arts Network Japan](#)

[Worth Sharing - A Selection of Japanese Books Recommended for Translation](#)

[Japanese Book News](#)

[Japanese Literature in Translation Search List](#)

[Japanese Film Database](#)

The Japan Foundation China Center

[Heart to Heart](#)



Japanese-Language Education

[Survey on Japanese-Language Education Abroad](#)

[Search for institutions offering Japanese-language education](#)

[Country and Regional Information](#)

[The Japan Foundation Japanese-Language Education Bulletin](#)

Japanese-Language Proficiency Test (JLPT)



The Japan Foundation Test for Basic Japanese (JFT-Basic)



Support for Japanese-language teachers

["Let's teach Japanese in the world!"](#)

[JF Standard for Japanese-Language Education](#)

["Minna no Can-do" website](#)

["Minna no Kyozaï" website](#)

[Nihongo Kyoiku Tsushin](#)

Support for Japanese-Language learners (e-learning)

[JF Japanese e-Learning Minato](#)

[Hirogaru, get more of Japan and Japanese](#)

[NIHONGO-e-NA](#)

[Nihongo de Care-Navi](#)

[Japanese in Anime & Manga](#)

["Erin's Challenge! I Can Speak Japanese." Contents Library](#)

[Challenge with Erin - Japanese Language Test-](#)

[Irodori: Japanese for Life in Japan](#)

[Marugoto: Japanese Language and Culture](#)

[Marugoto+](#)

[MARUGOTO Words](#)

[HIRAGANA/KATAKANA Memory Hint](#)

[KANJI Memory Hint 1, 2 & 3](#)

Video about dispatch of Japanese-language Specialists

[Connect the world by Japanese language -The Japan Foundation Japanese-language Specialists-](#)

[Connect the world by Japanese language -The Japan Foundation Japanese-language Specialists- Short Ver.](#)

[A first step toward a dream that leads to the future -The Japan Foundation Japanese-language teaching assistant-](#)

[A first step toward a dream that leads to the future -The Japan Foundation Japanese-language teaching assistant- Short Ver.](#)

[Japanese-language Specialists, messages from all over the world](#)

The Japan Foundation Center for Global Partnership



[The Japan Foundation Center for Global Partnership](#)

[Abe Fellowship Program](#)

[Japan Outreach Initiative \(JOI\) Program](#)

[CGP Grant Program](#)

[CULCON \(US-Japan Conference on Cultural and Educational Interchange\)](#)

The Japan Foundation Asia Center

[The Japan Foundation Asia Center Official Website](#)



[The Japan Foundation Asia Center Official Facebook](#)



[The Japan Foundation Asia Center Official Twitter](#)



["NIHONGO Partners" Program \(Official Facebook\)](#)

国際交流基金
JAPAN FOUNDATION JF 

