

Corporate Information

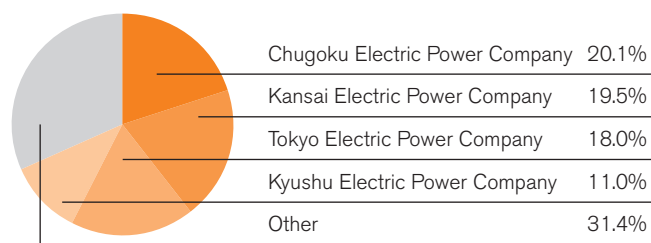
(As of March 31, 2008)

Corporate Name	Electric Power Development Co., Ltd.
Communication Name	J-POWER
Date of Establishment	Sept. 16, 1952
Headquarters Address	15-1, Ginza 6-chome, Chuo-ku, Tokyo 104-8165, Japan
Paid-in Capital	¥152,449,600,000
Number of Shares Authorized	660,000,000
Number of Shares Outstanding	166,569,600
Number of Shareholders	37,774
Stock Exchange Listing	Tokyo
Independent Public Accountants	Ernst & Young ShinNihon
Transfer Agent	The Sumitomo Trust and Banking Company, Limited

Directors and Corporate Auditors (As of July 2008)

President (Representative Director) Yoshihiko Nakagaki	Executive Directors Toshifumi Watanabe Tomoo Kosugi Koichi Tazawa
Executive Vice Presidents (Representative Directors) Shinichiro Ota Kiyoshi Sawabe Masayoshi Kitamura Masashi Hatano	Senior Corporate Auditors (Full-time) Masayuki Hori
Executive Managing Directors Yasuo Maeda Kanji Shimada Yoshihiko Sakanashi Minoru Hino Masaharu Fujitomi	Corporate Auditors (Full-time) Takashi Fujiwara Motohito Sunamichi
	Corporate Auditors Mutsutake Otsuka Hideaki Miyahara

Principal Customers of J-POWER's Electric Power Business (Fiscal 2007)



Note: Breakdown of J-POWER's electric power operating revenues by customer.

Regional Network

Domestic

Hokkaido Regional Headquarter
Sendai Office
East Regional Headquarter
Chubu Regional Headquarter
Hokuriku Office
West Regional Headquarter
Chugoku Office
Takamatsu Office
Fukuoka Office

Overseas

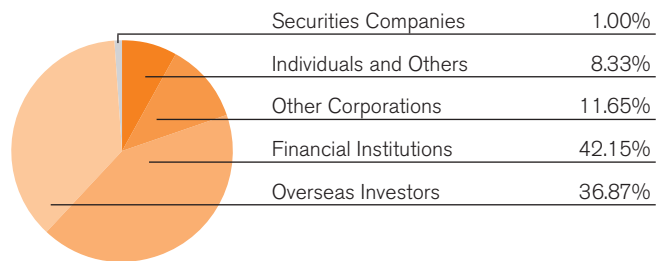
Washington Office (U.S.A.)
Beijing Office (China)
Hanoi Office (Vietnam)
Upper Kotmale Hydropower
Project Office (Sri Lanka)

For further information, please contact:
Electric Power Development Co., Ltd.
IR Group
TEL: +81-3-3546-2211
FAX: +81-3-3546-9531
E-mail: investors@jpower.co.jp

Major Shareholders

Name or Designation	Number of Shares Held (Thousands of Shares)	Percentage of Total Shares Outstanding (%)
The Children's Investment Master Fund	16,498	9.90
Deutsche Bank AG London 610	9,557	5.74
Nippon Life Insurance Company	9,120	5.48
Mizuho Corporate Bank, Ltd.	8,269	4.96
Sumitomo Mitsui Banking Corporation	4,295	2.58
Morgan Stanley & Co. International plc	4,242	2.55
The Bank of Tokyo-Mitsubishi UFJ, Ltd.	4,140	2.49
JP Morgan Chase Bank 380055	4,090	2.46
Daido Life Insurance Company	3,658	2.20
Japan Trustee Services Bank, Ltd. (Account in Trust)	3,418	2.05

Breakdown of Issued Shares by Type of Shareholders

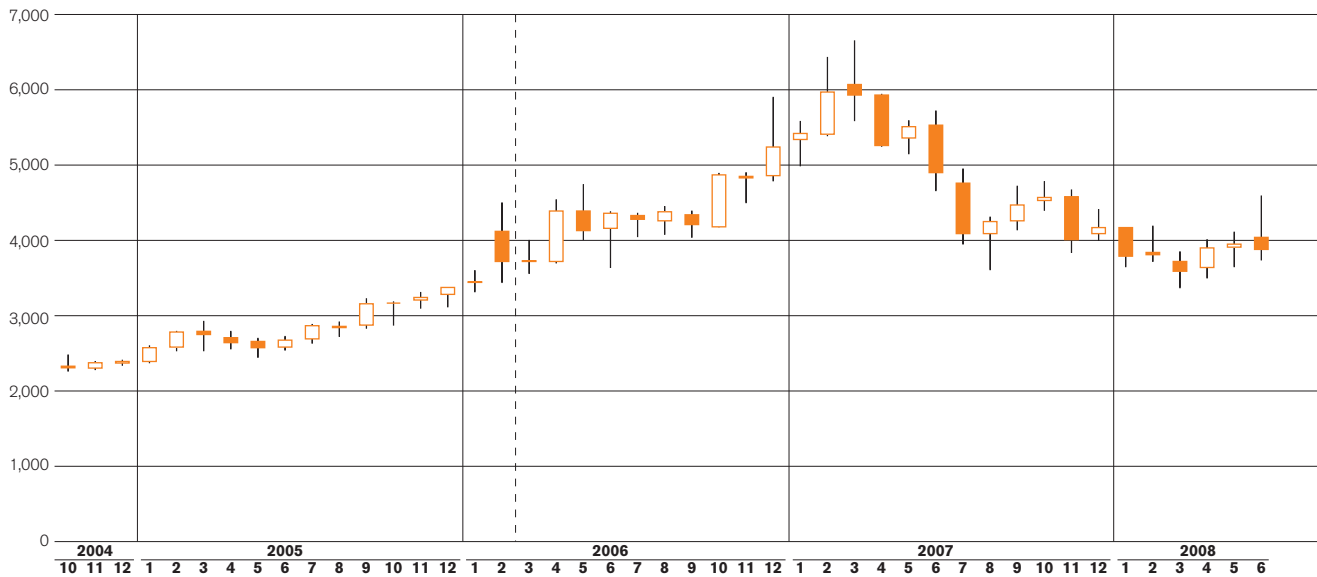


Corporate Bonds and Ratings

	Long-term	Short-term
Rating and Investment Information, Inc. (R&I)	AA+	a-1+
Japan Credit Rating Agency, Ltd. (JCR)	AAA	-
Standard & Poor's (S&P)	AA	-
Moody's	Aa2	-

Common Stock Price Range

Stock Price (Yen)



Note: Stock prices before the 1.2-for-1 stock split that was conducted on March 1, 2006 have been adjusted to the post-split prices.



Electric Power Development Co., Ltd.

15-1, Ginza 6-chome, Chuo-ku, Tokyo 104-8165, JAPAN Tel: +81-3-3546-2211

<http://www.jpower.co.jp>



This annual report was printed entirely on FSC-certified paper with soy-based ink.