

KAUA'I KĀKŌU

KAUA'I COUNTY GENERAL PLAN



2019 HAWAIIAN VERSION APPROVED BY THE COUNTY COUNCIL





Photo Credit: Imaikalani Aiu



2016 Star Advertiser



Mālama Honua—‘oi aku nō ia hana ma waho o ka mālama ‘ana i nā mea pa‘a wale nō e puni ai kākou. ‘O ka Mālama Honua ka ho‘omalua ‘ana ma ke ‘ano pono i nā mea a pau o ke ao i mea e ola loa ai; ‘o ia ho‘i ka ‘ike ‘ana i ka pili aku pili mai o nā mea a pau a me nā kānaka a pau nāna ke kuleana.

Ma o kākou nō ho‘i--ma ke alu like ‘ana--i ka ‘apuni ai ka ‘Ahahui Ho‘okele o Polineka i nā moana uliuli o ka honua, me ka ho‘ohana ‘ana i nā mea pono a me ka ‘ike kupuna, i ola ai ia mea ‘o ka Mālama Honua ma nā kaiaulu like ‘ole a puni ka honua. E ‘ole kākou, loa‘a ai ka ‘ikena me ka hihī‘o o ka ‘Ahahui Ho‘okele no ka ho‘ōla, ho‘oulu, a ho‘olōkahi ‘ana i ka honua; loa‘a ai ho‘i ka hā i nā wa‘a ho‘oilina o kākou--Hōkūle‘a, Hikianalia, a me ko Kaua‘i wa‘a pono‘ī, ‘o Nāmāhoe--a pēlā ho‘i e loa‘a ai nā pōmaika‘i ‘o ka mana‘olana a me ka lanakila, ma muli o nā ho‘okele ‘ana a pae aku me ka maluhia.

E like me ka ho‘okele wa‘a ‘ana, ua hiki ke huli aku i ke kūkulu, ‘a‘ole na‘e pololei loa ke ala. Eia na‘e, ‘o ke kau pa‘a aku o ka maka i ke alihilani a me nā hōkū, pēlā e hiki pono aku ai nā Loea Ho‘okele a kākou me ka nalo ‘ole o ka ‘āina e pae aku ai. E like me ka ho‘okele ‘ana o nā mea ho‘okele a kākou, ua kūkulu ko kākou kaiaulu i ko Kaua‘i Papahana Laulā i alaka‘i no kā kākou hana me ke kuhi ‘ana mai i ke ala e kō ai ka hihī‘o o ko kākou kaiaulu no ka wā e hiki mai ana.

E hilina‘i nui kākou i ke ala a kākou i ho‘okele ai, e ‘onipa‘a aku nō i ka wā ‘ino a pōpilikia ho‘i, me ka nānā ‘ana i nā mo‘olelo a me nā ha‘awina o nā Mea Ho‘okele Hawai‘i a kākou--iā kākou ho‘i--i mea ho‘i e Mālama Honua ai ma ‘ane‘i nei nō, ma Kaua‘i nei.

Ho‘ola‘a ‘ia kēia papahana iā

Louie Abrams

(1952 - 2016)

Komisina Ho‘olālā o ke au i hala a he mea kūpa‘a i ka ho‘oponopono ‘ana i ka nohona o Kaua‘i.

KAUA'I KĀKŌU

KAUA'I COUNTY GENERAL PLAN

2018 MANA HOPE LOA I 'AE 'IA E KE KANIKELA KALANA





He Wahi Leo Maiā Meia Bernard P. Carvalho Jr.



Aloha! Ua ‘olu‘olu ke Kalana o Kaua‘i i ka hō‘ike ākea ‘ana aku iā Kaua‘i Kākou – Ka Papahana Laulā Kalana o Kaua‘i. Na kēia palapala e ho‘okele ana i ke ala holomua no ko kākou mokupuni ma nā makahiki he 20 e hiki nei, me ke alaka‘i ‘ana mai i ka ulu ‘ana me ka ho‘omauō no nā hanauna a‘e.

No kākou nō ho‘i kuleana – no ko kēlā me kēia ‘oihana, moku, a kaiāulu ho‘i – ‘o ka hō‘oia ‘ana, ‘a‘ole e ho‘olawa ‘ia nā kuleana o ke kanaka ho‘okahi, akā, pōmaika‘i ka mokupuni a me ona kama‘āina i kēia hihi‘o a kākou e alu like nei.

Mai ka makahiki 2014, i ka wā i ho‘omaka ai ka māhele hana ‘o ka hana pū me ka lehulehu, he pahuhopu nui kēia nāna e ho‘oholo nei i mua i ka ‘ōlelo kūlia o ko mākou Ke‘ena Ho‘olālā i mea e hō‘ano hou ai i ka Papahana Laulā Kalana o Kaua‘i. I kēia manawa, ma hope o nā makahiki lō‘ihi o ka ‘imi noi‘i a alu like ‘ana ho‘i, ua ho‘opa‘a ‘ia ka pahukū e kūlia ai kākou i mua ma ke ke‘ehina ho‘okahi.

Makemake wau e pāhola ‘ia ku‘u mahalo i nā mea a pau loa nāna i komo mai i loko o kēia papahana ho‘okō hana, a ho‘olaule‘a nō au i kēia lanakila pū o ‘oukou. Mahalo e ko ke Kalana Ke‘ena Ho‘olālā me ona mau hoa kūkā, me nā lālā o ke Kōmike Kama‘āina A‘oa‘o, a me ko kākou mau kānaka ‘e‘ena ‘ole o nā kaiāulu i ka hō‘ike ‘ana mai i ko ‘oukou mai mana‘o me mākou a pau.

Iā kākou e holo mua like nei me ke aloha, ‘ike nō wau i Ka Papahana Laulā Kalana o Kaua‘i ke mā‘ama‘ama nei e like me ka Hōkū Pa‘a nāna e alaka‘i mai ana iā kākou e ho‘i ai i kauhale lā.

Me ke aloha pumehana,

Bernard P. Carvalho Jr.
Mayor, County of Kaua‘i
2018

KANIKELA KALANA

Mel Rapozo, Chair
Ross Kagawa, Vice Chair
Arthur Brun
Mason K. Chock
Arryl Kaneshiro
Derek S.K. Kawakami
JoAnn A. Yukimura



KE'ENA O KE KĀKAU 'ŌLELO KALANA

Jade K. Fountain-Tanigawa, County Clerk
Scott K. Sato, Deputy County Clerk

Telephone (808) 241-4188
Fax (808) 241-6349
Email cokcouncil@kauai.gov

Council Services Division
4396 Rice Street, Suite 209
Līhu'e, Kaua'i, Hawai'i 96766

Pepeluai 2018

Aloha!

Ma ka 'ao'ao o ke Kanikela o ko Kaua'i Kalana, ke makemake nei au e hō'ike aku i ko ke Kanikela mahalo i nā mea a pau loa i hiki ai ke ho'opau 'ia ka Papahana Laulā Kalana o Kaua'i. 'O ke kumuhana o ka papahana, Kaua'i Kākou, he mea e kū hō'ailona mai ana i nā makemake a me nā mana'olana o nā kama'āina, ka 'āuna 'ahahui, a me nā alaka'i kālai'āina o ko kākou mokupuni, ua lōkahi aku nō lākou i mea e wehewehe a ho'oholo ai i kahi hihio' alu like no ko kākou mokupuni. E like me nā hōkū nāna i alaka'i i ka po'e ho'okele wa'a o ka wā kahiko a pae mai i nā mokupuni hiehie o kākou, 'o ka Papahana Laulā Kalana o Kaua'i, he palapala 'āina ia no kākou e ho'okele ai i ka 'āina o Kaua'i e loliloli nei a hiki kākou i ka wā ma mua.

I ka wā o ka hana 'ana, ho'okahi nō mana'o i maopopo loa. Makemake ko Kaua'i po'e i ka hikiwawe o ka hana. Hikiwawe ka ho'olako 'ia mai o kauhale 'a'ole pipi'i loa, nā ho'oponopono 'ana o ka 'ōnaehana halihali 'ōhua, ka hō'eu'eu ho'okele waiwai, a me ka ho'oponopono loa i ka 'ōnaepuni. Pono mākou, nā alaka'i, e ho'oikaika ma ka 'ao'ao o ka laulima 'ana, a holo mua like aku nō ma ka ho'oholo kānāwai 'ana e kākou 'ia ai ka Papahana me kona hihio'.

Mahalo nui me ka ho'omaika'i i nā lālā hana nui o ke Kōmike Kama'āina A'oa'o, nāna i lomilomi mai i nā mana'o o ka lehulehu i mau 'ōlelo kūlia. He kōkua nui loa ke alaka'i waiwai 'ana o ko ke Kalana Ke'ena Ho'olālā me nā Hoa Kūkā no ka Papahana ma ka 'ohi'ohi 'ike 'ana ma kekahi 'ano pono'i i komo pū mai ai ke kaiāulu, a loa'a mai kēia palapala e ola nei, i palapala kuhikuhi no Kaua'i ma nā makahiki e hele maila. He mana'o hope loa, mahalo ho'i i ke kaiāulu o Kaua'i i ke komo pū 'ana mai i kēia papahana.

Iā kākou e holo mua nei, ke pāhola 'ia aku nei ko mākou mana'o lana iā Meia Bernard P. Carvalho, Jr., me kona Papa Luna Ho'okele, a me nā alaka'i o Kaua'i ma kēia mua aku no ka ho'omau 'ana i ka ho'ohanohano i kēia hihio' no ko Kaua'i po'e kama'āina me nā hanauna aku.

Mahalo nui loa i ko 'oukou komo 'ana i ka hana me ke alu like mai!



Me ka 'oia'i'o,

MEL RAPOZO
Noho Kanikela, Kanikela o ko Kaua'i Kalana

HE KE'ENA HAI KAULIKE

Bernard P. Carvalho, Jr.
Meia



Michael A. Dahilig
Luna Ho'olālā

Wallace G. Rezentes, Jr.
Luna Ho'oponopono

Ka'aina S. Hull
Hope Luna Ho'olālā

KE'ENA HO'OLĀLĀ
Kalana o Kaua'i, Moku'āina o Hawai'i

4444 Rice Street, Suite A-473, Lihue, Hawai'i 96766
TEL (808) 241-4050 FAX (808) 241-6699

Malaki 2018

Aloha Kākou,

No mākou ke kuleana 'o ka hana laulima 'ana me ke kaiāulu ma ka ho'oholomua 'ana iā Kaua'i Kākou – Ka Papahana Laulā o ke Kalana o Kaua'i. Ma loko o ia papahana he mau kulekele a hana ho'ī nāna e hana pū kekahi me kekahi no ka ho'okō 'ana i nā pahuhopu penei: he mokupuna ho'omauō ana 'o Kaua'i, he wahi kāka'ikahi a māhiehie, nona he po'e maika'i a ikaika ho'i o ke ola kino, a he wahi kaulike e ho'olako i nā pōmaika'i no nā mea a pau.

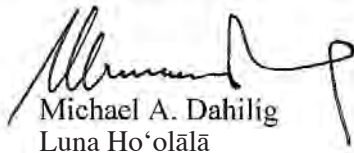
He laulima ka ho'olako 'ia 'ana o kēia papahana. Mahalo nui loa iā 'oukou a pau e nā mea i komo aku, ma nā 'ano like 'ole, i loko o kēia hō'ano hou i ke Papahana Laulā. Ma muli o ko 'oukou hana 'ana me ka pauaho 'ole me ke aloha e ho'olele aku i mua kēia papahana a kō mai nō nā pahuhopu o ko kākou mokupuni.

He pono ke mahalo aku au i nā lima kalana o Ka'aina Hull, Leanora Kai'aokamālie, Marisa Valenciano, Lee Steinmetz, Alex Wong, Alan Clinton, Jodi Higuchi-Sayegusa, Michael Moule, Lyle Tabata, Jade Fountain-Tanigawa, Scott Sato, Jenelle Agas, Aida Kawamura, and Yvette Mackler, na lākou nō i kōkua i ka ho'okele 'ana i kēia palapala a hiki aku ia i kahi kūpono.

'O ka hope, 'a'ole na'e ma ke kūlana emi o ka hanohano, iā Marie Williams – he kā'e'a'e'a maoli 'oe, a 'o 'oe ke kulukulu'ā e pili pa'a ai kēia palapala. Mahalo mākou a pau iā 'oe i ka hana pauaho 'ole 'ana ma ke 'ano alaka'i ma kēia papahana, me ka ho'omanawanui 'ana a kō mai nō ia i kēia lā.

'O ko mākou mana'olana ia, na kēia palapala nō e alaka'i i ke kui i ke kūkulu e holo like ai kākou i mua ma nā makahiki 20 e hō'ea maila. Ā 'o ia, 'o ka wā nō kēia e ho'omaka ai ka hana nui 'ana no ka pono o ko kākou kaiāulu.

Aloha nui loa,


Michael A. Dahilig
Luna Ho'olālā



**A BILL FOR AN ORDINANCE TO AMEND CHAPTER 7, ARTICLE 1,
KAUA'I COUNTY CODE 1987, AS AMENDED, RELATING TO THE UPDATE
OF THE GENERAL PLAN FOR THE COUNTY OF KAUA'I**

(ZA-2017-3)

BE IT ORDAINED BY THE COUNCIL OF THE COUNTY OF KAUA'I, STATE OF HAWAII:

SECTION 1. Findings and Purpose. The purpose of this ordinance is to revise the General Plan for the County of Kaua'i, in accordance with County zoning authority delegated pursuant to Section 46-4, Hawai'i Revised Statutes and the Charter of the County of Kaua'i. This revision is based on the General Plan Update process conducted by the Planning Department between the years 2013 through 2018.

Further technical amendments reflecting the adoption of regional "Community" and "Town" plans subsequent to the last General Plan update are also included to provide nomenclature consistency throughout the Chapter.

SECTION 2. Chapter 7, Article 1, Kaua'i County Code 1987, as amended, is hereby amended as follows:

"Article 1. General Provisions

Sec. 7-1.1 Title.

This Chapter shall be known and may be cited as "The General Plan for the County of Kaua'i."

Sec. 7-1.2 Purpose.

(a) Pursuant to the provisions of the Charter for the County of Kaua'i, the General Plan sets forth in graphics and text, policies to govern the future physical development of the County. The General Plan is intended to improve the physical environment of the County and the health, safety, and general welfare of Kaua'i's people.

(b) The General Plan states the County's vision for Kaua'i and establishes strategies for achieving that vision. The strategies are expressed in terms of policies and implementing actions. They may be augmented and changed as new strategies are developed.

(c) The General Plan is a direction-setting, policy document. It is not intended to be regulatory. It is intended to be a guide for future amendments to land regulations and to be considered in reviewing specific zoning amendment and development applications.

(d) The vision, the maps and text policies, and the implementing actions are intended to guide County actions and decisions. In addition, the maps and text policies are intended to guide the County in specific types of actions: making revisions to land use and land development regulations, deciding on zoning changes, preparing and adopting development plans and public facility plans, and preparing and adopting capital improvement plans.

Sec. 7-1.3 Definitions.

“Charter” means the Charter of the County of Kaua‘i, as amended.

“CIP” means the Capital Improvement Program of the County of Kaua‘i, which is part of the annual budget ordinance and programs appropriations and funding for capital improvements for six (6) years and beyond.

“Comprehensive Zoning Ordinance” means the Comprehensive Zoning Ordinance of the County of Kaua‘i, Chapter 8, Kaua‘i County Code 1987, as amended.

“Council” means the Council of the County of Kaua‘i.

“Development” means any public improvement project, or any public or private project requiring a permit or approval from the Planning Department or Planning Commission.

“Development plan” means a detailed plan for a specific geographic area of the County of Kaua‘i, as defined by Sec. 14.07 of the Charter and as further defined herein. “Community Plans” or “Town Plans” are also considered Development Plans for the purposes of this chapter and other zoning-related ordinances.

“General Plan” means the General Plan for the County of Kaua‘i, including the vision, policies, implementing actions, and Land Use and [Heritage Resources] other maps.

“Implementing action” means a strategy to implement a policy, which may include recommendations for amending ordinances and rules.

“Owner” means the holders of at least seventy-five percent (75%) of the equitable and legal title of a lot.

“Planning Commission” means the Planning Commission of the County of Kaua‘i.

“Planning Department” means the Planning Department of the County of Kaua‘i.

“Planning Director” means the Director of the Planning Department of the County of Kaua‘i.

“Policy” means a statement in the General Plan policies sections intended to guide the County in achieving the vision.

“Public facility” means a building, road, pipeline, or other capital improvement that is constructed by the County of Kaua‘i in order to provide a service to the public.

“Special Development Plans” means the Special Development Plans, Chapter 10, Kaua‘i County Code 1987, as amended.

“Special Management Area Rules and Regulations” means the Special Management Area Rules and Regulations of the County of Kaua‘i, as amended.

“Subdivision Ordinance” means the Subdivision Ordinance for the County of Kaua‘i, Chapter 9, Kaua‘i County Code 1987, as amended.

“Vision” means a preferred future as described in [Chapter 2 of] the text of the General Plan.

“Zoning amendment” means a change of the zoning district boundaries in relation to a specific parcel or parcels of land.

Sec. 7-1.4 Applicability.

(a) All actions and decisions undertaken by the County Council and the County Administration, including all County departments, agencies, boards, and commissions, shall be guided by the vision statement, policies, and the implementing actions of the General Plan.

(b) Ordinances and rules that relate to the following shall be guided by the policies of the General Plan:

- (1) Development plans;
- (2) Public facility plans;

- (3) Land use policies and regulations, including but not limited to zone changes, zoning regulations, subdivision regulations, and SMA rules and regulations;
- (4) Site development and environmental regulations, such as grading and drainage regulations; and
- (5) The six (6) year Capital Improvement Program.

Sec. 7-1.5 Adoption.

(a) The plan document on file with the County Clerk entitled ["Kaua'i General Plan,"] "Kaua'i Kākou – Kaua'i County General Plan" (Planning Commission Draft approved in 2017, as amended by the Kaua'i County Council and approved in 2018, and as may be subsequently amended), including the maps and text policies, vision, and implementing actions dated as of the effective date of the ordinance codified in this Article, is hereby adopted by reference and made a part of this Article."

(b) Upon adoption of the ordinance codified in this Article, prior resolutions and ordinances relating to [the 1984] previous General Plans are superseded; provided that conditions of approval attached to General Plan amendment ordinances adopted prior to the adoption of this General Plan shall remain in effect.

Sec. 7-1.6 Administration.

The Planning Department shall administer the provisions of this Article and the General Plan in accordance with the provisions of the County Charter.

Sec. 7-1.7 Interpretation.

The Planning Director shall interpret the General Plan and the consistency of a County action or a proposed development with the General Plan, subject to the review of the Planning Commission.

Sec. 7-1.8 Review of the General Plan.

The Planning Department shall undertake a comprehensive review of the General Plan within ten (10) years of the date of adoption and shall report its findings and recommended revisions to the Planning Commission and the County Council."

SECTION 3. Severability Clause. If any provision of this Ordinance or the application thereof to any person or circumstance is held invalid, the validity of the remainder of this Ordinance and the application of such provisions to other persons or circumstances shall not be affected thereby.

SECTION 4. New material is underscored and bracketed material is deleted. In printing this Ordinance, the brackets, bracketed material, and underscoring need not be included.

SECTION 5. This Ordinance shall take effect upon its approval.

Introduced by: /s/ MASON K. CHOCK
(By Request)

DATE OF INTRODUCTION:

September 6, 2017

Līhu'e, Kaua'i, Hawai'i

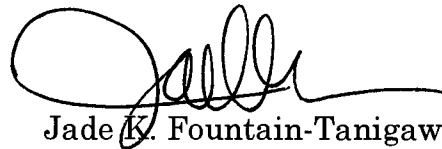
V:\BILLS\2016-2018 TERM\General Plan Update ZA Bill No 2666 Draft 2 JA_ct.doc

CERTIFICATE OF THE COUNTY CLERK

I hereby certify that heretofore attached is a true and correct copy of Bill No. 2666, Draft 2, which was adopted on second and final reading by the Council of the County of Kaua'i at its meeting held on February 7, 2018 by the following vote:

FOR ADOPTION:	Brun, Chock, Kagawa, Kaneshiro, Kawakami, Rapozo	TOTAL – 6,
AGAINST ADOPTION:	Yukimura	TOTAL – 1,
EXCUSED & NOT VOTING:	None	TOTAL – 0,
RECUSED & NOT VOTING:	None	TOTAL – 0.

Līhu'e, Hawai'i
March 12, 2018



Jade K. Fountain-Tanigawa
County Clerk, County of Kaua'i

ATTEST:



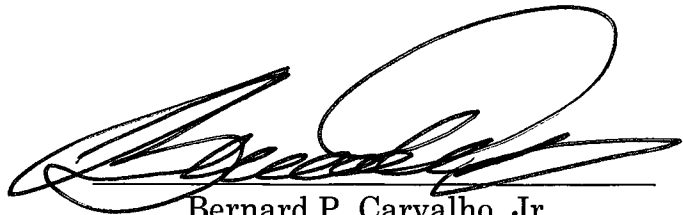
Mel Rapozo
Chairman & Presiding Officer

DATE OF TRANSMITTAL TO MAYOR:

March 12, 2018

Approved this 15th day of

March _____, 2018.



Bernard P. Carvalho, Jr.,
Mayor
County of Kaua'i

Nā Kama'āina A'oa'o

Bill Arakaki
Kurt Bosshard
Bev Brody
Helen Cox
Luke Evslin
Robert Farias, Sr.
Randall Francisco
Laurie Ho
Brenda Jose
Sue Kanoho
Cammie Matsumoto
Mark Oyama
Gary Pacheco
Barbara Robeson
Tom Shigemoto
Stacy Sproat-Beck
Susan Tai Kaneko

Ke Kanikela Kalana

Mel Rapozo, Po'o Kanikela
Ross Kagawa, Hope Po'o Kanikela
Mason K. Chock, Po'o Kōmike
Ho'olālā
Arthur Brun
Arryl Kaneshiro
Derek S.K. Kawakami
JoAnn A. Yukimura
Gary L. Hooser (pau kona noho 'ana)
KipuKai Kualii' (pau kona noho 'ana)

Komisina Ho'olālā

Kimo Keawe (Po'o)
Louis Abrams
Kanoë Ahuna
Donna Apisa
Roy Ho
Wayne Katayama
Wade Lord
Sean Mahoney
Glenda Nogami-Streifert

Ke Ke'ena Meia

Mayor Bernard P. Carvalho, Jr.
Managing Director Wallace
Rezentes, Jr.
Managing Director Nadine
Nakamura (pau kona noho 'ana)
Sarah Blane, Luna o nā Limahana

Ke'ena Ho'olālā

Michael Dahilig, Alaka'i
Ka'āina Hull, Hope Alaka'i Ho'olālā
Marie Williams, Mea Ho'olālā
Leanora Ka'iaokamālie, Mea Ho'olālā
Marisa Valenciano, Mea Ho'olālā
Lee Steinmetz, Mea Ho'olālā Halihali
'Ōhua
Alex Wong, Mea Ho'olālā
Alan Clinton, Mea Kōkua Papahana

Ke'ena Kākau 'Ōlelo Kalana, Mahele o ke Kanikela Hana Lawelawe

Jade K. Fountain-Tanigawa, Kākau
'Ōlelo Kalana
Scott K. Sato, Hope Kākau 'Ōlelo
Kalana
Jenelle Agas, Mea Kōkua 'Aha 'Ōlelo
Nā Limahana Kanikela Hana
Lawelawe

Nā 'Ahahui Ko'olua o ke Kalana

Nā Kuleana o ka Po'e Kūpuna
Nā Loio Kalana
Ka Ho'omōhala Ho'okele Waiwai
Ka Ho'oponopono Wā Pōulia
(ma mua kapa 'ia o ke Kūpale Kiwila)
Ke Ahi
Ke Kauhale
Ka Ho'oponopono Lama
Nā Pāka a Hana Ho'onanea
Ke'ena Māka'i
Nā Hana Noa i ka Lehulehu
Nā Hana Wilikī
Ke Kūkulu Hale

Ka Wai Pilau
Ka 'Ōpala Pa'a
Ka Halihali 'Ōhua
Ka Wai

Nā 'Ahahui Ko'olua o ka Moku'āina

Ke Ke'ena o ka 'Āina a me nā
Kumuwaiwai
Ke'ena Olakino
Ke'ena Halihali 'Ōhua
Ke'ena Kuleana Hawai'i

Nā Hoa Kūkā

SSFM International, Inc. (Prime)
Charlier Associates, Inc.
Collaborative Economics
Economic & Planning Systems
Marine & Coastal Solutions
International, Inc.
Opticos Design, Inc.
PBR Hawai'i
Raimi & Associates
SMS Research

Papahana Sea Grant o ke Kulanui o Hawai'i

Ruby Pap, 'Ākena Peleleu Ho'ohana
'Āina Kahakai

Inā kuhi 'ia ma kekahi 'ano aku, ua ho'olako 'ia nā ki'i a pau e nā limahana o ke Ke'ena Ho'olālā.

Ua waiho 'ia nō kēia 'ao'ao, 'a'ole i pa'i 'ia.

PAPA WEHEWEHE 'ŌLELO HAOLE



Na ka papa helu o lalo e wehewehe mai ana, ma ke ka'ina pī'āpā haole, i nā 'ōlelo ho'olālā kauhale i ho'opuka 'ia ma kēia palapala.

Pāku'i Ho'ololi Palena 'Āina 'o ia ka ho'ololi 'ana i nā palena o ko ka Moku'āina 'o Hawai'i mau Ho'ohana 'Āina 'ana. 'Ae 'ia nā pāku'i ho'ololi palena 'āina e ko ka Moku'āina Komisina Ho'ohana 'Āina.

Ke Kaiapuni Kūkulu 'Ia 'o ia nā mea pa'a a pau loa o ko kākou mai kaiaulu, e like me nā hale, nā alanui, ka 'ōnaepuni, a me nā pāka.

Ka Papahana Kaiaulu 'o ia ka palapala noa i ka lehulehu nāna e kuhikuhi pono mai ana i nā palapala noi no ka ho'ohana 'āina i kēia mua aku, pēlā pū ka ho'omāhuahua kauhale hou, me nā hana ho'oponopono i nā pono lako kū i ka lehulehu ma kekahi kaiaulu o loko o ke Kalana o Kaua'i. Ma ka Papahana Laulā o ka makahiki 2000, kapa 'ia nā papahana kaiaulu 'o ia nā "Hana Ho'omāhuahua." Mana'o 'ia nō 'o nā papahana kaiaulu kū nō lākou i kahi i kuhi pono 'ia, a 'ike 'ia nō ma laila ka hihi'o o ke kaiaulu ma ia wahi.

'Oihana Pili Hale 'o ia ka mālama 'ana i ka 'ahahui a hana ho'olako paha ma loko o ka hale pono'i o ha'i.

Nā Kūlana Pa'a Haku Lau 'o ia nā ho'oponopono kiko'i 'ana, e like me ke kānāwai kū i ke 'ano e pa'a ai, ma loko o kekahi mau Wahi Ho'olālā Kūikawā. Mana'o 'ia, kōkua nā Kūlana Pa'a Haku Lau i ka mālama 'ia 'ana o ka hihi'o a me ke 'ano o ka nohona i makemake 'ia e ke kaiaulu.

Ka Ho'omāhuahua Kauhale 'o ia ke kūkulu 'ana i kekahi hale, mea kūkulu 'ia, ke kūkulu hou, ka 'eli lānahu, ka ho'ohemo, ke kīwa'a, ka ho'opiha, ka 'eli, me ka nao wili 'ana; 'o kekahi loli 'ana o ke 'ano a me ka nānaina o kekahi hale a 'āina paha; 'o ka māhelehele 'ana i ka 'āina i mau mahele; 'o ka loli 'ana o ka ikaika a 'ano paha e ho'ohana 'ia ai ka 'āina, e like me ka ulu 'ana o nā ke'ena ma kekahi hale ke'ena noho a loli 'ana paha o ke 'ano e ho'ohana 'ia ai, he 'ano ho'ohana mālie a ho'ohuli 'ia i kālepa a kāpili paha ke 'ano; 'o kekahi hana nāna e ho'ololi i ke kahakai, 'āina pili kai, kaha pili kai, kahawai, muliwai, lokowai, ki'owai, 'auwai, naele, pu'e one, 'āina lā'au, 'āina pulu, kaianoho lāhui nāwaliwali, wai 'āina a kekahi kumuwaiwai hou aku, pēlā pū me ke kūkulu 'ana i ka 'āina pili kai a me kekahi hana hou aku paha.

Nā Palapala 'Ae Kūkulu (Palapala 'ae Ho'ohana 'āina a Kūkulu hale ke helu like 'ia) 'o ia ka 'ae 'ana ma ka palapala a me kekahi 'ōlelo i ho'oholo 'ia e ke aupuni kūloko ma lalo o kona mau kānāwai ho'oponopono ho'omāhuahua 'āina nāna e ho'āpono iā ia e lawe a'e i ka hana 'o ke kūkulu hale ma kekahi 'ano, 'o ia ho'i, 'a'ole kaupalena 'ia e ka palapala 'ae kūkulu, palapala ho'olilo kā'e'i 'āina, ka palapala 'āina kaiahale hope loa, kaiahale 'u'uku, ho'onoho kaiahale hou, ka ho'ohana ma muli o nā kumu, nā 'ano like 'ole, ka ho'oholo 'ōlelo ma muli o ka ho'opi'i, ke kūkulu 'ia o ke ke'ena ho'olālā mua 'ia, palapala kū i ka wahi, palapala hō'ike i ke kūpono, me ka/nā pāku'i ho'ololi palapala 'āina ho'olilo kā'e'i 'āina na ka mahele 'aha'ōlelo (lou pūnaeweke APA, 2016).

Nā Kūlana Pa'a Ho'omāhuahua Kauhale 'o ia nā ho'oponopono kiko'i 'ana, e like me ka ho'olawa kuleana 'āina, ke kī'e'ki'e o kekahi hale, a me nā ālaina nāna e alaka'i i ka ho'onohonoho 'ana i ka ho'omāhuahua kauhale ma ke 'ano kā'e'i 'āina i ho'olilo 'ia. I la'ana, ma ka paukū 8-4.4 no ka Noho Kama'āina 'ana o ke Kānāwai Ho'olilo Kā'e'i 'Āina Ho'omaopopo (CZO) me ona mau kūlana pa'a, 'ōlelo 'ia nō 'o nā hale noho 'ohana ho'okahi i ho'oka'awale 'ia, kaupalena 'ia nō lākou ma ke 'ano pa'apū a me ka nui o ka 'eka.

Ka Ho'okuleana 'Ana 'o ia ka palapala 'ae i ho'āpono 'ia, ua waiho mua 'ia aku e ke Kalana o Kaua'i no ka ho'ohana a ho'omāhuahua 'āina 'ana. 'O ia ho'i ka 'ae 'ana i ka kaiahale, ka ho'olilo kā'e'i 'āina, nā 'ano like 'ole, ka ho'ohana 'āina kūikawā, a me nā palapala 'ae PDU.

Nā Mile Hele 'ia e ka Mea 'Ai 'o ia ka lō'ihi e lawe 'ia ai ka mea 'ai mai kona wahi i ho'oulu 'ia ai a i kona wahi e 'ai 'ia ai.

Nā Loina o ka Mahi 'Ai 'o ia ka 'ae 'ana e nānā 'ia ka ho'oulu, ka ho'olako, ka halihali, a me ka mālama 'ana i ka hua 'ai me ka lau 'ai ma ke 'ano palekana i emi loa aku ai nā pilikia o nā mea 'ai (lou pūnaeweke USDA, 2016).

Ka Nele i ke Kaupoku 'Ole 'o ia ka nele i ka lawa 'ole o ke kauhale. 'O ka po'e nele i ke kaupoku 'ole, 'a'ohē lākou he mea hale, noho paha ma ke alanui, ma nā hale ho'omalū, ma kekahi mau hale a ka'a paha i ha'alele 'ia, a me kekahi hale aku he pupupu ke 'ano, 'a'ole ia he hale pa'a pono (lau pūnaeweke NHCHC, 2017).

Ka Hale 'o ia ka hale, ke'ena hale, hale holo, huina lumi, a lumi kū ho'okahi paha i noho 'ia (a i 'ole paha, inā i noho 'ole ia, mana'o 'ia ka noho 'ia) ma ke 'ano he kū ka'awale (SMS Research 2016).

Ke Kūkulu Kūloko 'o ia ke kūkulu 'ana i loko o nā kaiaulu. Ua hiki i ke kūkulu kūloko ke ho'onui i ka nui o nā hale me ka ho'olilo 'ole 'ana i ka 'āina.

Ka Pono Kuleana 'o ia nā palapala alolio no nā Hoa 'Āina no nā 'āina alolio, nā 'āina hale, a me nā kuleana kiko'i, pau pū me ka 'ae i ka holo i uka a i kai e 'ohi'ohi ai i nā pono o ka 'āina ma ke Kānāwai Kuleana o ka Māhele (Kēkēmapa 21, 1849) i kapa 'ia ke "Kuleana Act of 1850."¹ I ka makahiki 2012, ua hō'ouia hou ka 'Aha Kī'eki'e i ka pono o nā pono Kuleana i kēia mau lā.²

Ke Alaka'ina Kāhi'onaina 'o ia nā kulekele alaka'i e ho'oikaika ana i ka maika'i, ka palekana, a me ke kū'ai 'ana o ke kāhi'onaina alanui. He kōkua nō ia mau mea i ka ho'opa'a 'ana he mau kūlana pa'a no ka nu'ukia a me ke 'ano i mana'o 'ia e ke kaiaulu.

Ka Māhele (i kapa pū 'ia Ka Māhele Nui) 'o ia ke ka'inahana, i hana 'ia e ka Mō'i Kamehameha III, o ka ho'oili 'āina Hawai'i e hō'ouia ai i ka loa'a o ka 'āina i nā Hawai'i i ma muli o ke Kānāwai Alien Land Ownership o ka makahiki 1850, i 'ae i nā malihini e kū'ai i ka 'āina i mea e nui ai ka waiwai a me ka hana.³

Ka(wa)hi Makakū 'o ia nā wahi hana pū o nā mea e hakuhaia ai, e hana ai, a e a'o ai me ka 'enehana, nā pono hana, a me nā lako pono.

Ke 'Ano Hale Kū'ai Emi 'o ia ka hale i hiki ke hele wāwae 'ia ke kaona i nā hale kū'ai a me nā pono, e ho'opiha ana i ka wā nele o nā hale 'ohana kū ho'okahi a me nā ke'ena hale (Opticos Design Website, 2017).

Ka Hale 'Ohana Nui 'o ia nā hale 'elua a 'oi papahale ma ka hale ho'okahi, a i 'ole he mau hale i loko o ke kauhale.

Ka(wa)hi Kūikawā 'o ia ka 'āina ma ka Palapala Ho'ohana 'Āina e hō'ano auane'i a ho'onoho 'ia auane'i ma o kekahi Ho'olālā Kaiaulu i kēia mua aku ma muli o ka pā koke o ia 'āina. Ua mana'o 'ia he kū i kēia papahana ke kulekele Ho'olālā Kaiaulu, ke 'ae 'ia he kānāwai.

Ka Hale 'Ohana Kū Ho'okahi 'o ia ka hale e noho ai he ho'okahi wale nō 'ohana.

Ke Kaiahale 'o ia ka 'āpana 'āina a ho'oka'awale 'ana paha o ka 'āina he 'elua a 'oi 'āpana no ke kū'ai 'ana, ka ho'olimalima 'ana, a ke kūkulu 'ana paha. 'O ia nō ho'i nā hale a mau hale paha, ma kahi o ka hōkele, i ka'awale a he 'elua a 'oi wahi noho a hale noho paha.

Kā'e'i Pakele Kai Ho'ē'e he 'āina e ha'alele ai inā e kū he kai ho'ē'e, e like me ke koina o ke Ke'ena Mālama Pōulia o Kaua'i (KEMA). He mau wahi, ma ka ma'a mau, he 100 kapua'i i uka o nā wahi wai a kai ho'i.

Palena 'Āina Kiwikā 'o ia nā palena 'āina e kau palena ana i ka mōhala kiwikā. He mea ia e 'ike ai i nā wahi kiwikā a me nā wahi kiwikā 'ole. 'O nā wahi ma waho o ia palena, he mau wahi ia e hana li'ilili ai no ka waiho ākea, ka mālama 'āina, a me ka mahi'ai paha.

Ke Ala Hele Wāwae he hapahā mile a hapalua mile paha ma ke kahahānai o ka hele wāwae 'ana a i 'ole he loa i hiki ke hele wāwae 'ia ma waena o 'elua wahi.

Pāku'i Ho'ololi Kā'e'i 'Āina 'o ia ka ho'ololi 'ana a ho'omāhua 'ana i ko ke Kalana o Kaua'i CZD. Paukū 8-3. Ua hiki ke ho'ololi 'ia he 'ehā mea o ka CZD ke 'ike 'ia he pono ka ho'ololi 'ana no ka pono, ka 'olu, a me ka maika'i o ka lehulehu.

1 Hoakalei Cultural Foundation Website 2014.

2 Opinion of the Court by Nakayama, Acting C.J., Supreme Court of the State of Hawai'i, April 27, 2012; Hawai'i Reporter April 2012.

3 Chinen, JJ The Great Māhele, 1958; HawaiiHistory.org 2017).

Ki'i 1-1 Ko Ke Kalana 'Ōnaehana Ho'olālā 22

Ki'i 1-2 Ka Mōlina o ka Papahana Laulā. 23

Ki'i 1-3 Nā 'Ano Ho'oko'iko'i o ka Ulu 'Ana (2015-2035) 24

Ki'i 1-4 Ka Ulu 'Ana o Kauhale ma nā Moku Ho'olālā 25

Ki'i 1-5 Ke Ākea o ko ka Papahana Laulā Mahele Hana Kū i ka Lehulehu. 27

Ki'i 2-2 Nā Moku 'Āina Ho'olālā a me Nā Wae'ano 'Āina 61

Ki'i 2-2 Nā Moku 'Āina Ho'olālā a me Nā Wae'ano 'Āina 62

Ki'i 3-1 Nā Mahele o ka 'Āina Kumu Wai 96

Ki'i 3-2 Nā Mahele o ka 'Āina Kumu Wai ma Kaua'i 100

Ki'i 3-3 Ka Helele'i o ka Ua me Kona Ho'i i Luna 100

Ki'i 3-4 Nā Hopena 'Ino ma nā 'Āina Kai ma Muli o ka Pi'i o ke Kai 105

Ki'i 3-5 Ko Kaua'i Ulia Pōpilikia i ka Lawa 'Ole o Kauhale 113

Ki'i 3-6 Nā Pahuhopu 2035 o ka Papahana Holo Lau ma ka 'Āina. 127

Ki'i 3-7 Ka Wānana 'Ana i ka Nui o ka Wai e Pono ai ka Ho'olilio Wai Pilau me ka Ho'olako Wai ma nā Moku i ka Makahiki 2035. 142

Ki'i 3-8 Nā Wahi Mālama Wai O Ka Lehulehu A O Ka Pilikahi 144

Ki'i 3-9 Ka 'Awelike Helu Kānaka Kipa Mai o ka Lā (2005-2015). 162

Ki'i 3-10 2015 Mo'olako Mea Kipa (ma kēlā me kēia wahi) 162

Ki'i 3-11 Wahi Noho Mea Kipa o Kaua'i. 164

Ki'i 3-12 Wahi Noho Mea Kipa o Waimea-Kekaha. 164

Ki'i 3-13 Wahi Noho Mea Kipa o Kaua'i Hema. 164

Ki'i 3-14 Wahi Noho Mea Kipa o Līhu'e. 165

Ki'i 3-16 Wahi Noho Mea Kipa o Kaua'i 'Ākau 165

Ki'i 3-15 Wahi Noho Mea Kipa o Kaua'i Hikina. 165

Ki'i 3-17 Ka Loa'a Mahi'ai o Kaua'i (2015). 168

Ki'i 3-18 Kaua'i Nui Kuapapa, Moku o Kaua'i. 179

Ki'i 3-19 Nā Ea Ho'omahana Honua Lilo GHG o Hawai'i 187

Ki'i 3-20 Nā Hopena 'Ino o ka Loli o ke Au ma Kaua'i. 195

Ki'i 3-21 Palapala 'Āina Kanaka Kūlike 201

Ki'i 4-1 Ka Pō'ai Ho'oholo a 'Ike 221

Ki'i 5-1 Palapala 'Āina Ho'ohana 'Āina no Kaua'i Komohana. 229

Ki'i 5-2 Palapala 'Āina Ho'ohana 'Āina no Waimea-Kekaha 231

Ki'i 5-3 Palapala 'Āina Ho'ohana 'Āina no Hanapēpē-'Ele'ele	233
Ki'i 5-4 Palapala 'Āina Ho'ohana 'Āina no Kaua'i Hema.	235
Ki'i 5-5 Palapala 'Āina Ho'ohana 'Āina no Līhu'e.	237
Ki'i 5-6 Palapala 'Āina Ho'ohana 'Āina no Kaua'i Hikina	239
Ki'i 5-7 Palapala 'Āina Ho'ohana 'Āina no Kaua'i 'Ākau	241
Ki'i 5-8 Palapala 'Āina Kumu Waiwai Ho'oilina no Kaua'i	244
Ki'i 5-9 Palapala 'Āina Kumu Waiwai Ho'oilina no Waimea-Kekaha	245
Ki'i 5-10 Palapala 'Āina Kumu Waiwai Ho'oilina no Hanapēpē-'Ele'ele	246
Ki'i 5-11 Palapala 'Āina Kumu Waiwai Ho'oilina no Kaua'i Hema	247
Ki'i 5-12 Palapala 'Āina Kumu Waiwai Ho'oilina no Līhu'e	248
Ki'i 5-13 Palapala 'Āina Kumu Waiwai Ho'oilina no Kaua'i Hikina	249
Ki'i 5-14 Palapala 'Āina Kumu Waiwai Ho'oilina no Kaua'i 'Ākau.	250
Ki'i 5-15 Palapala 'Āina Pōulia no Kaua'i	252
Ki'i 5-16 Palapala 'Āina Pōulia no Waimea-Kekaha	253
Ki'i 5-17 Palapala 'Āina Pōulia no Hanapēpē-'Ele'ele	254
Ki'i 5-18 Palapala 'Āina Pōulia no Kaua'i Hema	255
Ki'i 5-19 Palapala 'Āina Pōulia no Līhu'e	256
Ki'i 5-20 Palapala 'Āina Pōulia no Kaua'i Hikina	257
Ki'i 5-21 Palapala 'Āina Pōulia no Kaua'i 'Ākau.	258
Ki'i 5-22 Palapala 'Āina 'Ōnaepuni no Kaua'i.	260
Ki'i 5-23 Palapala 'Āina 'Ōnaepuni no Waimea-Kekaha.	261
Ki'i 5-24 Palapala 'Āina 'Ōnaepuni no Hanapēpē-'Ele'ele	262
Ki'i 5-25 Palapala 'Āina 'Ōnaepuni no Kaua'i Hema.	263
Ki'i 5-26 Palapala 'Āina 'Ōnaepuni no Līhu'e.	264
Ki'i 5-27 Palapala 'Āina 'Ōnaepuni no Kaua'i Hikina	265
Ki'i 5-28 Palapala 'Āina 'Ōnaepuni no Kaua'i 'Ākau	266
Ki'i 5-29 Nā Pono Lako Noa i ka Lehulehu o Kaua'i	268
Ki'i 5-30 Nā Pono Lako Noa i ka Lehulehu o Waimea-Kekaha	269
Ki'i 5-31 Nā Pono Lako Noa i ka Lehulehu o Hanapēpē-'Ele'ele.	270
Ki'i 5-32 Nā Pono Lako Noa i ka Lehulehu o Kaua'i Hema	271
Ki'i 5-33 Nā Pono Lako Noa i ka Lehulehu o Līhu'e	272
Ki'i 5-34 Nā Pono Lako Noa i ka Lehulehu o Kaua'i Hikina	273
Ki'i 5-35 Nā Pono Lako Noa i ka Lehulehu o Kaua'i 'Ākau	274
Ki'i 5-36 Palapala 'Āina o nā Ala Holo Ka'a 'Ōhua ma Kaua'i Mokupuni	277
Ki'i 5-37 Palapala 'Āina Lawelawe 'Ōhua o Kaua'i.	278

NĀ PĀKAUKAU



Pākaukau 1-1 Heluna Kānaka, Mokupuni a Puni a ma ka Moku Ho'okahi (1990-2035)	26
Pākaukau 1-2 Ka Nui Kauhale e Pono ai, Wānana 'ia a Hiki Mai ka Makahiki 2035	26
Pākaukau 1-3 Ka Ulu 'Ana o nā 'Oihana, Wānana 'ia a Hiki Mai ka Makahiki 2035.	26
Pākaukau 1-4 Ka Nui Malihini E Hiki Mai, Wānana 'ia a Hiki Mai ka Makahiki 2035	27
Pakuhi 2-1 Nā Loli o Nā Wahi Hōkele	56
Pakuhi 2-2 Nā Loli Nui Ma nā Moku 'Āina	58
Pakuhi 2-3 Nā Hana & Nā Kuhia I Kī'i 'Ia No Ka Hō'ano Hou I Ka Palapala Ho'ohana 'Āina.	61
Pākaukau 3-1 'Ōlelo Hō'ulu'ulu no nā Pahuhopu me nā Mahele	94
Pākuhi 3-2 Nā Pāka Moku'āina o Kaua'i.	156
Pakuhi 3-3 'Awelike Kipa o Ka Lā Ma ka Mahina.	158
Pakuhi 3-4 Nā Kula Ho'āmana Kaiāpuni	206
Pākaukau 4-1 Pahuhopu Papahana Laulā a me nā Ana Hana Kāmua	222
Pākaukau 5-1 Kī Palapala 'Āina no ko Kaua'i Pūnaewelewele Alanui a Lawelawe 'Ōhua	276

Ua waiho 'ia nō kēia 'ao'ao, 'a'ole i pa'i 'ia.

‘ŌLELO HO’OLAUNA	17
1.0 KA HIHI’O, NĀ PAHUHOPU, & NĀ KULEKELE NO KA WĀ E HIKI MAI ANA	21
1.1 Ko ka Papahana Laulā Pō’aiapili	21
1.1.1 Ko ka Papahana Laulā Kumu Nui	21
1.1.2 Ka ‘Ōnaehana o ka Ho’olālā ‘Ana o ke Kalana	21
1.1.3 Ka Mōlina o ka Papahana Laulā	22
1.2 Ka Mahele Hana Kū i ka Lehulehu	24
1.2.1 Nā ‘Ike Pili Kūhope me Nā ‘Ano Ho’oko’iko’i o ka Ulu ‘Ana.	24
1.2.2 He Papahana i Ho’okele ‘ia e ka Hihī’o o ke Kaiaulu.	28
1.2.3 Ke Kaulike i ke Kulekele me ka Lawehana e Ho’okō ai	28
1.3 Ka Hihī’o me nā Pahuhopu	30
Pahuhopu #1: He Mokupuni Mauō	31
PAHUHOPU #2: HE WAHI NANI KŪ ‘OKO’A	32
Pahuhopu #3: He po’e kūpa’a a ikaika	33
PAHUHOPU #4: HE WAHI KAULIKE NO NĀ KĀNAKA A PAU	34
1.4 NĀ KULEKELE HO’OKELE HOLO MUA.	35
KULEKELE #1: HO’OPONOPONO HOLO MUA A MĀLAMA I KE ‘ANO KUA’ĀINA	36
KULEKELE #2: HO’OLAKO I NĀ HALE KUMU KŪ’AI KŪPONO I LOKO O KA HO’ONOHONOHO ‘ANA I NĀ KAIĀHALE KŪKULU-PILI-PONO NO NĀ ‘OHANA KAMA’ĀINA	37
KULEKELE #3: E ‘IKE ‘IA KE ‘ANO PONO’Ī O KO KAUA’I MAU KŪLANAKAUHALE PĀKAHI A ME NĀ MOKU ‘ĀINA	38
KULEKELE #4: HAKU KAIĀHOME KĀ’OKO’A A HĀ’EHUOLA	38
KULEKELE #5: HO’OPUKAPUKA MA NĀ ‘ŌNAEPUNI.	39
KULEKELE #6: HO’ĒMI I NĀ KĀKI NOHONA.	39
KULEKELE #7: KŪKULU I MAU ‘ANO ‘ŌNAEHANA LAWE ‘ŌHUA.	40
KULEKELE #8: HO’OMALU I KA NANI O KA ‘ĀINA	40
KULEKELE #9: MĀLAMA I KO KAUA’I ‘ANO, HE ‘ĀINA HO’OKIPA MALIHINI	41
KULEKELE #10: KŌKUA I KA HOLOMUA O NĀ ‘OIHANA	41
KULEKELE #11: KŌKUA I KA MŌHALA O NĀ ‘ĀINA MAHI.	42
KULEKELE #12: HO’OMALU I NĀ KUMU WAI	42
KULEKELE #13: HO’OKŌ I KA IKEHU MA’EMA’E	43

KULEKELE #14: HO'OMĀKAUKAU NO KE ANIAU LOLI	43
KULEKELE #15: MĀLAMA I NĀ KULEANA HAWAI'I A ME NĀ WAHI PANA	44
KULEKELE #16: MĀLAMA I NĀ ALA I NĀ WAHI PANA	44
KULEKELE #17: MĀLAMA I NĀ KEIKI	45
KULEKELE #18: MĀLAMA I NĀ KŪPUNA	45
KULEKELE #19: ALOHA AKU, ALOHA MAI	46
2.0 KA HO'OHANA 'IA 'ANA O KA 'ĀINA I KĒIA MUA AKU	49
2.1 KA HO'OHANA 'IA 'ANA O KA 'ĀINA I KĒIA MUA AKU	49
2.2 NĀ WAHI I HO'ONOHO 'IA NO KA HO'OHANA 'IA 'ANA	52
2.3 HO'OHOLA I KA PALAPALA 'ĀINA	59
2.4 KA HO'OLĀLĀ KAIĀULU 'ANA	60
2.4.1 WAIMEA-KEKAHA	62
2.4.2 HANAPĒPĒ-'ELE'ELE	68
2.4.3 Kaua'i Hema	72
2.4.4 LĪHU'E	77
2.4.5 Kaua'i Hikina	80
2.4.6 Kaua'i 'Ākau	85
3.0 NĀ HANA O KĒLĀ ME KĒIA MAHELE	93
MAHELE: I. KA 'AINA KUMU WAI	95
1. WAO NAHELE - KA 'ĀINA KUMU WAI O UKA	97
2. KAHAWAI - NĀ 'ĀINA KUMU WAI O KULA, KE KAHE 'ANA, ME NĀ KUMUWAIWAI NO KA WAI MAI	99
3. KAHAKAI - NĀ WAHI PILI KAI ME NĀ KAPAKAI	104
4. NĀ LĀHUI NĀWALIWALI A PILIKIA LOA	108
MAHELE: II. KA HO'OLAKO KAUAHALE 'ANA	112
1. NĀ KAUAHALE 'A'OLE PIP'I LOA	114
3. NĀ KAIĀULU HOU	119
4. KE KAUAHALE NO KA PO'E LIMAHANA MAHI'AI	120
5. NĀ 'ĀINA HO'OPULAPULA HAWAI'I	121
6. KA HO'OLAKO KAUAHALE NO KA PO'E KŪPUNA ME NĀ WAHI NOHO E KŌKUA 'IA KA NOHONA	122
7. KA HELUNA KĀNAKA NELE I KA HALE 'OLE	123
8. NĀ HOPENA O NĀ HO'OHANA HŌKELE NUI MA KA WAIHONA O NĀ KAUAHALE E WAIHO NEI	125
'ĀPANA: III. KA HOLO 'ĀINA 'ANA	126
1. LAULĀ	128
2. NĀ ALANUI KALANA	130
3. KA POLOKALAMU HOLO	132

4. POLOKALAMU HOLO WĀWAE	133
5. POLOKALAMU HOLO PAIKIKALA	134
6. KA HO'OKŪ KA'A 'ANA	136
'ĀPANA: IV. 'ŌNAEPUNI KO'IKO'IE	138
1. KA WAI KŪLOKO	139
2. KA WAI PELAPELA, NĀ PAIPŪ WAI PELAPELA, A ME NĀ LUAWAI PELAPELA	141
3. KE KILOI 'ANA I KA MOKA A ME KA HO'OPŌ'AIAPUNI 'ANA.	145
4. NĀ KAHUA MOKULELE A ME NĀ AWA PAE MOKU	147
'ĀPANA: V. NĀ WAHI KA'ANA 'IA	149
1. NĀ KIKOWAENA KAONA	150
2. NĀ PĀKA	151
3. NĀ PĀKA WAIHO LŌ'IHI A ME NĀ ALA HELE WĀWAE	154
4. NĀ PĀKA MOKU'ĀINA	155
'ĀPANA: VI. KA HO'OKELE WAIWAI	157
1. KA 'OIHANA HO'OKIPA	160
2. Mahina'ai.	166
3. NĀ 'OIHANA LI'I LI'I A ME NĀ 'ĀPANA HO'OKELE WAIWAI MAIKA'I	172
'ĀPANA : VII. KUMU WAIWAI MO'OMEHEU.	175
1. NĀ HALE, NĀ MEA I KŪKULU 'IA, A ME NĀ WAHI KO'IKO'I	176
2. WAHI PANA, NĀ WAHI MO'OMEHEU, A ME NĀ KUMU WAIWAI.	177
3. NĀ HŌ'AILONA 'ĀINA A ME NĀ KUMU WAIWAI NĀNAINA	181
'ĀPANA: VIII. KA MAUŌ IKEHU A ME KA HO'ĒMI ANIAU LOLI	183
1. IKEHU MAUŌ	184
2. HO'ĒMI I NĀ EA HO'OMEHANA HONUA LILO	186
MAHELE: IX. KA PALEKANA O KA LEHULEHU & KE KŪPA'A I LOKO O NĀ PŌPILIKIA	190
1. NĀ HANA LAWELAWE O KA MĀKA'I, KE KINAI AHI, NĀ KIA'I OLA, ME NĀ KAHU MA NĀ WĀ PŌULIA	191
2. KE OLA HOU 'ANA I LOKO O NĀ PŌULIA.	193
3. KA HO'OMEHANA HONUA ME KA MA'A 'ANA AKU I KA LOLI O KE AU	196
MAHELE: X. KA PONO & KE OLA KINO MAIKA'I NO NĀ MEA A PAU	200
1. KE KAULIKE PILI KĀNAKA	202
2. NO KA HIKI KE LOA'A KE A'OA'O ME KA HO'ONA'AUO MAIKA'I	205
3. KE OLA O KE KAIĀULU.	208
4. KAE ALA E KOMO AI I LOKO O NĀ HANA HO'ONANEA E OLA AI	212
4.0 HO'OHOLO 'ANA A ME KA HO'OPONOPONO 'ANA	217
4.1 HO'OHOLO 'ANA I KA PAPAHAHA LAULĀ	217
4.1.1 NĀ LAKO HO'OHOLO	218
4.1.2 NĀ KE'ENA HO'OHOLO KO'IKO'I.	219

4.2 KE ANA 'ANA I KA HOLO MUA	220
4.2.1 NĀ ANA LAWELAWE	220
4.2.2 HO'ONA'AUAO I KA LEHULEHU ME KA HO'ONUI PIHANA'Ū	221
4.2.3 KA HŌ'ANO HOU 'ANA I KA PAPAHAHA LAULĀ	221
5.0 NĀ PALAPALA 'ĀINA KULEKELE	227
5.1 KA 'IKENA NUI	227
5.2 NĀ PALAPALA 'ĀINA HO'OHANA 'ĀINA O KA WĀ E HIKI ANA.	228
5.3 NĀ PALAPALA 'ĀINA KUMU WAIWAI HO'OILINA	243
5.4 NĀ PALAPALA 'ĀINA PŌULIA	251
5.5 NĀ PALAPALA 'ĀINA 'ŌNAEPUNI	259
5.6 NĀ PALAPALA 'ĀINA PONO LAKO NOA I KA LEHULEHU	267
5.7 NĀ PALAPALA 'ĀINA LAWELAWE 'ŌHUA	275
6.0 REFERENCES	281
NĀ PĀKU'INA	295
PĀKU'INA A - PALAPALA HŌ'IKE HOLO MUA MA KA PALAPALA LAULĀ 2000 .	295
PĀKU'INA B - KA MANA'O ME KE KA'INA HANA ĀKEA E HO'OMĀHUAHUA I	
KĒIA PAPAHAHA LAULĀ	299
PĀKU'INA C - NĀ HANANA KŪ I KE AU A ME NĀ MANA'O WĀNANA . . .	318
PĀKU'INA D - PALAPALA 'ĀINA KAI PI'I	331
PĀKU'INA E: NĀ 'ĀINA 'ONA 'IA A 'ONA 'OLE 'IA NO KA MĀHUA HOU 'ANA	
AKU	359
PĀKU'INA F - NĀ PAPAHAHA KULEANA O NĀ 'ĀPANA 'ĀINA.	369
PĀKU'INA G - HA'IMAULIA HANA NĀ PĀKU'INA.	386
PĀKU'INA H - NĀ PILIKIA A ME NĀ HANA KŪPONO	445

The appendices are not controlling and are meant only as a courtesy guide.



Mai luna iho ‘ao‘ao hema: He mau lo‘i kalo ma Hanalei, Ka Moku o Kaua‘i ‘Ākau; Kahakai ‘o Brennecke’s, Ka Moku o Kaua‘i Hema; He Po‘e Hoe Wa‘a no Kaua‘i; Ka Pa‘a Alanui o Kūhiō Alaloha kokoke iā Kapa‘a, Ka Moku o Kaua‘i Hikina.

‘O Kaua‘i i ka Huliau

No kona mau kahakai, ‘āina nani, me ka ‘ō‘ā o nā lāhui like ‘ole, ho‘olako ‘o Kaua‘i i ka pono o kona po‘e kānaka, a ‘ume‘ume aku i ka po‘e malihini a puni ka honua. ‘O ke aloha ka mea e pāhola i luna o ko kākou nohona kua‘āina me ka pilina o kākou i ka ‘āina a me ke kai - he mea e laha ‘ole a pūlale ‘ole ai ho‘i ko kākou nohona i loko o kēia au e wikiwiki a‘e nei o ka ne‘e mua.

Akā, ma ke ka‘ina hana o kēia papahana laulā i laulaha ai ka mana‘o o kānaka, “pōpilikia ka nohona o kēia wā, ‘a‘ole like me ka wā ma mua”, a ‘o ia mau pilikia nō ka mea e ‘āpu‘epu‘e ai ka holomua ‘ana o ka nohona kānaka. Ua hāpai a‘ela nā leo o ko ke kaiāulu i kekahi mau mana‘o kūpiliki‘i ma muli o nā papahana i ho‘olālā mua ‘ia, ‘a‘ole na‘e i ho‘okō ‘ia mai, a me nā manawa a ke aupuni i ho‘opane‘e aku ai i ka wehe ‘ana i ia mau pilikia. Pa‘a nō ‘o Kaua‘i i kona kūlana kū ‘i‘o maoli i kahi e kauka‘i ai i luna o ka waiwai o ka ‘oihana ho‘okipa malihini, a pili iā kākou a pau nā pilikia o ka pa‘apū alanui a me nā kauhale. ‘O ko kākou ‘ōnaepuni, he mea kahiko ia i pau kona pono, ua hiki aku nō ia i kahi, me he huliau lā.

Aia nō he mau pono, e ho‘okūkū ana paha kekahi i kekahi, ma ka mālama kaiāpuni, ka ho‘olako waiwai, ka pa‘apū alanui, a me ke ola kino. Kupu a‘ela nā pilikia ma ka ‘āina mahi, ka ho‘ona‘auao, ka wai mānalo, ka nohona kaulike,

a me nā lāhui o waho e uluāhewa ana. Eia a‘e ho‘i ka loli o ke ao e hiki koke mai nei me kona mau hopena paha i nā kaiāulu, ke ola kino, a me nā waiwai.

A ‘upu a‘ela mai loko mai o ia mau hopena ‘ino ka mana‘o ‘ino‘ino i ka hiki a hiki ‘ole paha ke mālama ‘ia ka pono o Kaua‘i. Ua laulaha paha ke kū‘ē‘ē o ko Kaua‘i ma nā ‘ano pilikia like ‘ole. Lōkahi na‘e ka mana‘o o ka nui i ke kumu ho‘okahi o ia pilikia: ‘o ka māhuhua ‘ana.

Ke Māhuhua Akula nō, Kū a Kū ‘Ole Paha i ka Makemake

‘O ka ho‘oponopono ‘ana i ka māhuhua, ‘o ia ka mea nui e loa‘a ai ka ho‘olālā a hala ka wā lō‘ihi. Aia ka pono o ka ho‘olālā ‘ana ma ka ‘ike ‘ana o ke kaiāulu i nā ‘ano e kū nei i hiki ‘ole ke ‘alo ‘ia a‘e, me ke kūkā wala‘au ‘ana i nā pilikia e hiki mai ana paha mai kēia mua aku, me ka ho‘omākaukau ‘ana i mau ‘ano e wehe ai ia mau pilikia. Akā, ‘o ka makemake nui, ‘o ia ke kaupalena ‘ana i ka nui e māhuhua a‘e ai ka heluna kanaka, i loko nō na‘e o ka ulu ‘ana a nui loa ma luna o ka mea i wānana ‘ia e ka Papahana Laulā 2000. Ke mau akula nō ka ulu ‘ana i loko nō o ka makemake ‘ole o kānaka ma ia ‘ano.

Eia na‘e, ‘o ka ho‘olālā lawa ‘ole ‘ana no ka wā e hiki ana, pēlā e emi ai ka maika‘i o ka ‘ōnaepuni, pēlā e nui ai nā ho‘ohana ‘āina kū‘ē kāmāwai, a e loa‘a ai ho‘i ke kaiāulu e noho ana ma lalo o ke kaumaha ‘o ka heluna kanaka e nui

a'ela. Ua mana'o a'ela kekahi po'e, 'o ke kaupalena 'ana i ka nui o ka 'ohana a me ka pāpā 'ana paha 'a'ole e huaka'i mai kekahi po'e i Kaua'i nei, he mea kū'ē loa i ke kumukānāwai ia mau hana. Ke wānana 'ia nei, e pānui ana ka ulu 'ana ma nā makahiki iwakālua e hiki nei he ho'okahi pākēneka o ka makahiki. 'O ka ulu 'ana, he hopena ia o ka ulu 'ana ma ke 'ano kuluma, a me ka hiki 'ana mai o ka po'e no waho mai, wānana 'ia na'e ma nā 'ike i loa'a mai, e nui ana ho'i paha ka ha'alele 'ana o ka po'e kama'āina i hānau a hānai 'ia ma 'ane'i.

I kēia lā, he huliau nō ia no Kaua'i, ma kekahi 'ao'ao, 'o ka ho'olālā kūpono 'ana i lako a lawa ka po'e kama'āina i hānau a hānai 'ia ma kēia 'āina no kēia mua aku, ma kekahi 'ao'ao aku ho'i, 'o ka mau 'ana o ka ha'alele o kama'āina no ka 'imi 'ana i ka pono ma kahi 'ē.

I ka nānā 'ana i ia hihia, ua hō'ike mai ke kaiaulu i ka makemake nui e ho'oholo 'ia nā hana e pono ai nā keiki o Kaua'i e ulu a'e nei. No laila, 'ae mai nō ka Papahana Laulā i ia ulu 'ana i wānana 'ia ma kona 'ano he manawa kūpono nō ia e alu like ai me ka holomua 'ana nō. Ma ia 'ano, 'o ka mea nui ka ho'olako 'ana ma ke 'ano hō'ōia, e pōmaika'i ka po'e kama'āina i ia ulu 'ana, me ka 'ike pū 'ana i nā hihia kaomi 'ole o kēia lā.

'O kekahi o ia mau hihia, 'o ka lawa 'ole o kauhale ma Kaua'i. Ma kahi o 9,000 mau hale ka nui e pono ai ke hiki aku i ka makahiki 2035 ('ike iā Pāku'ina C). 'O ka hiki i kā kākou po'e kamali'i ke 'imi i ko lākou pono ma ka 'āina nei, aia nō ia i ka hiki ke ho'oponopono loa a ho'olawa ho'i i ke emi 'ana o kauhale i hiki ke 'imi 'ia 'a'ole ho'i pipi'i loa. 'O ke mea 'āpiki loa e pānui ai ka hihia, 'o nā hale a pau e kūkulu 'ia ma Kaua'i, ua hiki nō ke kū'ai 'ia aku ma ka mākeke puni honua. 'O ia mau 'ano mana ho'okūkū, ma luna a'e paha o nā hemahema o ka po'e kama'āina, 'a'ole nānā nui 'ia, pēlā e emi ai ko lākou pono ma ka hala 'ana o ke au.

He Mea Nui nō ka Ho'olālā 'ana no Kaua'i mai Kēia mua aku

'O ka ho'ohuli 'ana i ke 'ano e ulu a'e nei ma kēia mokupuni o kākou, aia nō i nā hopena a me ka holomua 'ana o nā palapala ho'olālā, e like me kēia palapala nei. 'O ka Papahana Laulā, he kāheahea nō ia e alu like ai, 'o ka ho'oholo 'ana i nā mana'o nui loa e holo like ai kākou ma ke ala kūpono. 'O ka 'ae like loa 'ana o kākou a pau ma nā mana'o nui a pa'akikī o ka ho'oholo 'ana, aia nō i ke kū 'ana mai o ke kaiaulu a lohe 'ia ko lākou mana'o, me ka hō'ōia 'ana e kākō'o nui 'ia ana nā ho'oponopono 'ana. No laila, ma ka wā ho'olālā, ua 'imi nui 'ia nā mana'o o ke kaiaulu, me ka "ho'olohe 'ana" a mākou, 'a'ole 'o ka "maha'oi 'ana."

Kauka'i ia mea he aupuni a ka lehulehu i ka like 'ole o nā mana'o a me ka wala'au pū 'ana me ke aloha aku aloha mai, me kēlā nō ka hana a kēia Papahana Laulā. Ma kinohi o kēia mahele hana, nui ke kānalua o ka po'e i ka loli 'ana mai kēia mua aku. Akā, ma ka ho'olaha 'ana a'e i nā 'ike pili no nā 'ano e kū nei, 'o ia ka mea i 'imi 'ia a loa'a mai mai nā papahana 'imi 'ike mai, 'a'ole ho'okahi wale nō, pēlā i loa'a

mai ai ka maopopo laha i mea e hiki ai ke kūkākūkā pū.

He mau kaukani ka nui o ka po'e i komo mai, ma kēia 'ano a kēlā 'ano paha, i loko o i mahele hana ho'olālā, ma o nā hālāwai hui nui, nā hanana hale hāmama, nā hālāwai kūikawā, nā palapala ana mana'o, nā papa 'imi 'ike, nā ha'i 'ōlelo ma loko o ka lumi papa, nā ho'okūkū, a ma ka pūnaeweke kekahi ('ike iā Pāku'ina B). Ua ho'okumu ke Ke'ena Ho'olālā o ke Kalana i ke Kōmike A'oa'o no ka Po'e Maka'āinana (CAC) nāna i ana akula i nā mana'o kuhi a me nā kulekele. Ua komo like mai ka po'e kamali'i, haumāna kulanui, nā mea 'āina nui, a me nā 'ahahui ho'i. Ma ke 'ano hō'ulu'ulu, ua 'imi 'ia a loa'a mai nā mana'o o nā mea a pau loa nona he kuleana no Kaua'i mai kēia mua aku.

Ma luna o ia kahua, ho'oholo ka Papahana Laulā i kahi hihio, nā kulekele, nā pahuhopu, and nā hana e alaka'i ana i ke Kalana me kona ho'oholo mana'o 'ana, me ke alu like pū 'ana me nā 'ahahui ma nā makahiki lō'ihi e hiki ana. Na ia palapala e ho'ākāka ana i ke 'ano e ho'oponopono ai i ka ulu 'ana i wānana 'ia maila, me ka mālama mau loa 'ana i nā kumuwaiwai ko'iko'i loa, a me nā wahi 'āina, a me ko lākou pono.

Kū ka Hihio i ka 'Oia'i'o

Ua 'ae like nā kaiaulu, ua 'oia mau nō ke 'ano kūpono e pili mai ai ka Papahana Laulā 2000. Ua kuhi mai nō na'e lākou i ke 'ano i kō 'ole ai kona hihio me nā pahuhopu, nā mea e ho'oponopono hou ai, me kona ho'oponopono 'ole 'ana i nā hemahema. Ke nānā aku i ia pilikia, he mau 'ao'ao ko ka hana hō'ano hou i ka Papahana Laulā, a komo mai nā nīnau i ke kūpono o ka mea e ho'ololi ai, ma ke mea e kau nui loa ai ka mana'o ma luna, a me ka mea nui loa e nānā nui aku ai.

Ua 'ae like 'ia, na ka Papahana Laulā e ho'olako mai i kulekele akāka, me nā mea e ana 'ia ai ka holomua, a me kekahi mau hana no ka loilo'i 'ana i ke kū a kū 'ole paha i ke kuleana. 'O ka hopena, ua kuhi ka Papahana Laulā he 19 kulekele nui nāna e alaka'i i ka ulu 'ana, a komo pū mai ke kama'ilio 'ana no kēlā a me kēia kulekele me ko lākou mana'o no nā hopena e makemake 'ia. Pāku'i 'ia maila he mokuna no nā Hana e Kō ai, i kāpili 'ia aku i nā kulekele, pēlā pū me kekahi mokuna no ka ho'oholo 'ana i ia mau hana. Me ia mau loli 'ana, e mau ana nō ka waiho 'ana o ka Papahana Laulā ma kona 'ano he palapala komo mua no ke Kalana no ka ho'oponopono 'ana i ka ulu 'ana, nāna e ho'olako mai i mau pahukū no kēia mua aku.

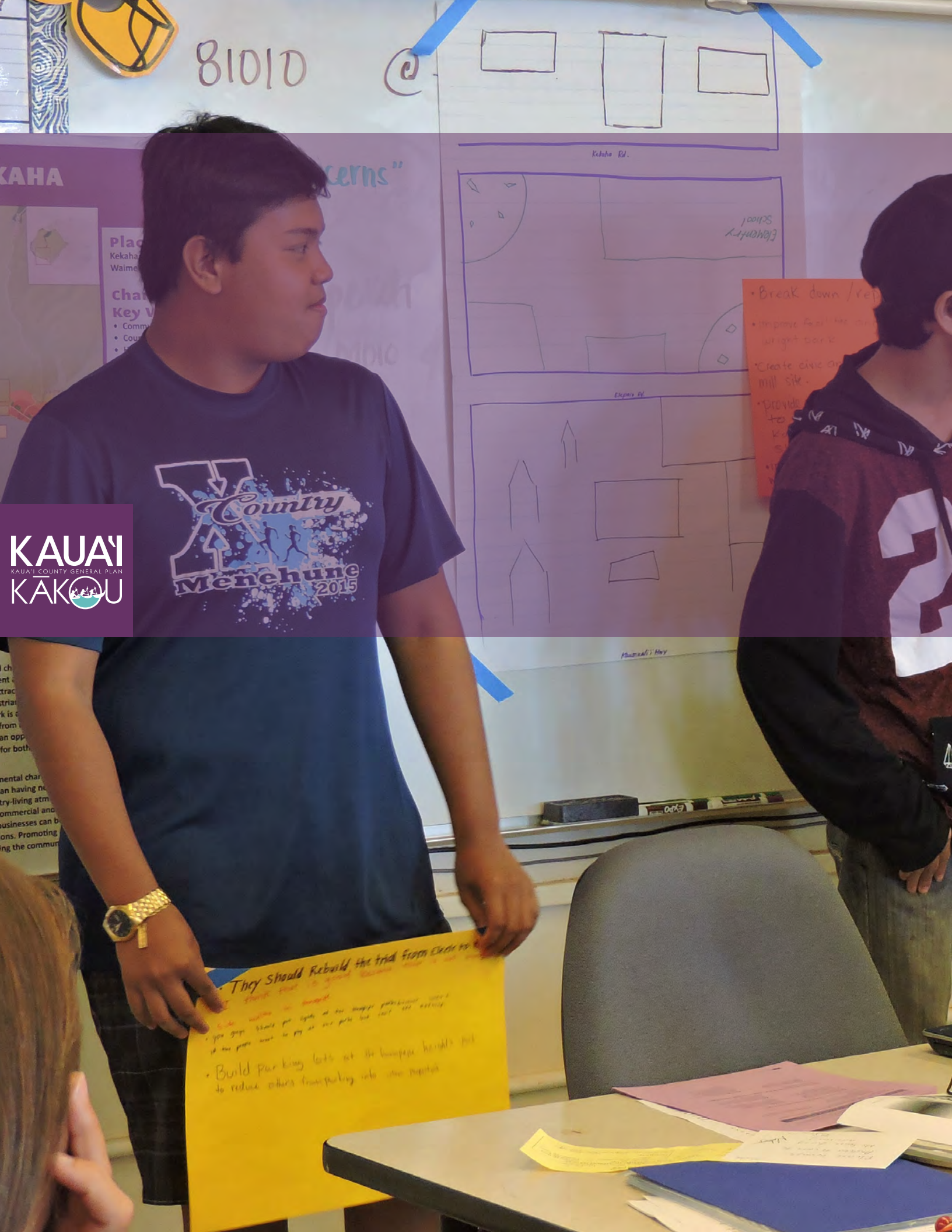
Kaua'i Kākou: 'O ka Holomua Like 'ana

'O ka mea e ikaika ai ko Kaua'i, 'o ia ke kū'oko'a o nā kākou pākahi, a me ke kaiaulu nui, ma ko lākou kuleana e alu like 'ia nei. 'O ke kauka'i aku, kauka'i mai ka pono, ka 'a'a like 'ana i nā hihia e kupu ana, ka 'imi 'ana i nā 'ano e kū'oko'a ai kākou, a me ka ho'omalua 'ana i nā 'āina a loina ho'i e henoheno ai 'o Kaua'i.



He Mau Pili Pili Kai o Kaua'i

'O ke aloha ka mea nui o ko kākou nohona kua'āina a me ka pilina i ka 'āina a me ke kai.



81010

@

KAHA

cerns"

Place
Kekaha
Waimea

char
Key V

- Comm
- Coun

Kekaha Rd.

Elementary School

Elm St. W.

Kaunaloa Hwy

- Break down / rep
- improve road / the cur
- Create civic an
- provide

KAUAI
KAUAI COUNTY GENERAL PLAN
KAKOU

Country
Menehune
2015

They Should Rebuild the trail from Ekahi to

- Build parking lots at the bus stop / the trail
- Build parking lots at the bus stop / the trail

1.0 KA HIHI'Ō, NĀ PAHUHOPU, & NĀ KULEKELE NO KA WĀ E HIKI MAI ANA

'O ka Hihī'ō a me nā Pahuhopu o ka Papahana Laulā, he mau 'ōlelo nō ia e hō'ike 'ia ai ko ke kaiaulu mau minamina a hopena ho'i a lākou e makemake nei i ka makahiki 2035. Mai ka Hihī'ō a me nā Pahuhopu, mai laila mai nō nā Kulekele a me nā hana mai kēlā mua aku.

1.1 KO KA PAPAHAHA LAULĀ PŌ'AIAPILI

1.1.1 KO KA PAPAHAHA LAULĀ KUMU NUI

Ho'okumu ka Papahana Laulā i mau 'ōlelo mākia no ka ho'oponopono 'ana i ka ulu 'ana a me ka ho'omāhuahua 'ana o ke kaiaulu ma nā makahiki e hiki mai ana he 20. He hana i koi 'ia e ke kōnāwai moku 'āina, ua a'o ka Palapala Ho'okumu o ke Kalana ho'i na ka Papahana Laulā e alaka'i mai kēia mua aku i nā hana ho'ohana 'āina me nā lula kūkulu hale, papahana ho'okiwiā hou, me nā pu'u kālā e uku ai i nā hana kumupa'a ho'oholomua. Ua 'āpono 'ia ka Papahana Laulā mua i ka makahiki 1971. 'O ka ho'ohou 'ana i kēlā me kēia 'umi makahiki ka pono, ua hana 'ia nō na'e i ka makahiki 1982 a 2000 ho'i. 'O ka ho'ohou 'ana i ka Papahana Laulā he hana ia e hiki ai ke nānā 'ia ke kaiaulu ma kona 'ano holo 'oko'a, e ho'oholo i mau mana'o no ka pono o kona mau kōnaka a pau e pili ana i nā hihia a me nā ala e hiki ai ke māhuahua a'e.

Ma kona 'ano he palapala ho'okele i ke ala e hele ai, 'a'ole 'o ka Papahana Laulā e ho'oponopono ma ke 'ano he kōnāwai

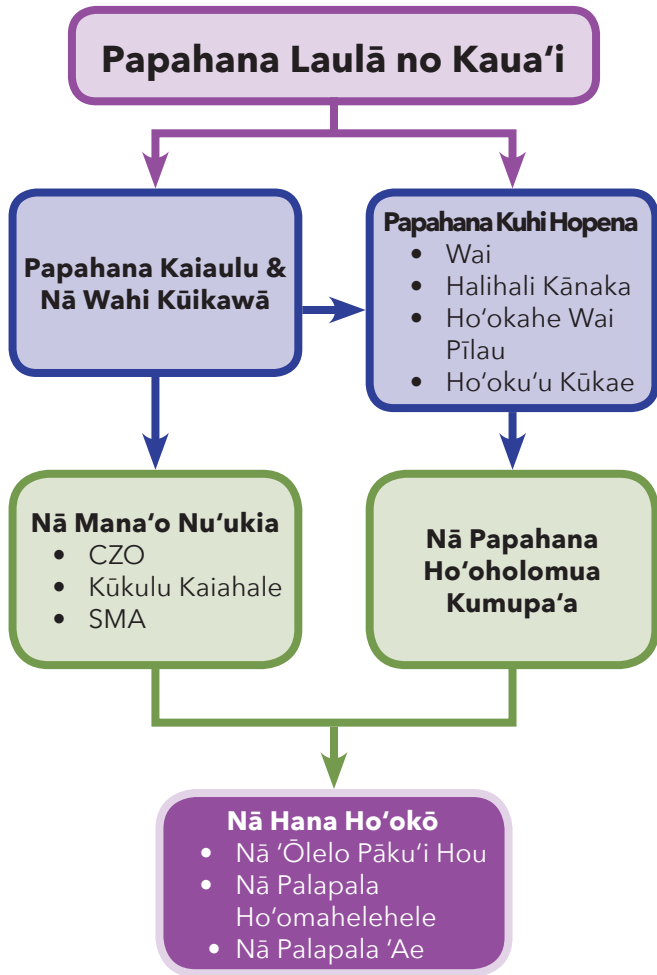
kā'ei 'āina a kōnāwai paha nāna e 'ae i ka ho'ohana 'āina. Ho'okele ia mau kulekele i nā mana'o ho'oholo a ke Kalana ma ka nānā nui 'ana i nā hana ma'a mau o ka ho'ohana 'āina, ka ho'ākāka 'ana i ke 'ano o ka ho'omāhuahua kauhale i makemake 'ia, me ka ho'onoho 'ana i mau 'ōlelo mākia ma ka pae ki'eki'e no ka ho'okumu 'ana i ka 'ōnaepuni a me kekahi mau papahana ho'i. Na ia mea nō e ho'ololi aku i nā 'ōlelo ho'oponopono hou no ka ho'omāhuahua kauhale, nā pāku'i ho'ololi pili i nā moku a me nā kā'ei, nā palapala 'ae i nā papahana i wae 'ia kona pono a pono 'ole paha e ka lehulehu, me nā papahana ho'olālā kumupa'a.

Komo mai he 'eono moku o Kaua'i i ia Papahana Laulā: Kaua'i 'Ākau, Kaua'i Hikina, Līhu'e, Kaua'i Hema, Hanapēpē-'Ele'ele, me Waimea-Kekaha. Komo 'o Ni'ihau i ke Kalana o Kaua'i, 'a'ole na'e i loko o ka Papahana Laulā no kona ho'oponopono ka'awale 'ia 'ana.

1.1.2 KA 'ŌNAEHANA O KA HO'OLĀLĀ 'ANA O KE KALANA

He mea nui ka Papahana Laulā ma ka ho'olālā 'ana o ke Kalana, 'o ia ho'i he mo'okū'auhau ia o nā hana a papahana ho'i, e like me ka mea e hō'ike 'ia nei ma Ki'i 1-1. Ke hui lōkahi 'ia, ho'okumu ka Papahana Laulā, nā papahana

Ki'i 1-1 Ko Ke Kalana 'Ōnaehana Ho'olālā



kaiaulu, a me nā papahana kuhi hopena i kulekele kūloa nāna e ho'okele i ka ho'omāhuahua 'ana i nā kānāwai ho'ohana 'āina a me ka Papahana Ho'oholomua Kumupa'a.

Na **Ka Papahana Lauā** e kīpapa i ke ala kulekele no ke Kalana ma o nā kānāwai i palapala 'ia mai. 'O nā kānāwai pili i nā wahi hakahaka, ua hō'ike 'ia mai ma ka Palapala 'Āina Ho'ohana 'Āina o ka Wā e Hiki Mai Ana (Paukū 5.2) a me kekahi mau palapala 'āina a'e. Wehewehe 'ia ke kulekele ma o nā papahana kaiaulu hu'e 'ike hunahuna, nā kā'e'i 'āina, me nā kānāwai no ka ho'ohana 'āina.

Na **Nā Papahana Kaiāulu & Wahi Kūikawā** e ho'okumu i mau kulekele hu'e loa aku i nā 'ike hunahuna, a palapala 'āina ho'i i pili i kekahi kaiaulu a 'āina paha, a ho'okumu ho'i i kahua pa'a no ka ho'oponopono 'ana i nā kā'e'i 'āina pili i ia wahi pono'i iho.

Na **Nā Papahana Kuhi Hopena** e kālai a ho'okumu ho'i i kulekele e pili ana i ka ho'omōhala auane'i i kekahi mau 'ōnaehana a pono lako ho'i. He mau palapala ho'okele ke 'ano o nā papahana kaiaulu a me nā papahana pono lako no ka lehulehu ho'i. Na ia mau papahana e wehewehe a ho'okumu i mau ala a ala ho'okō ho'i, komo pū mai ho'i nā mana'o no ka ho'okō 'ana i nā kumuwaiwai, me ka ho'oponopono 'ana i nā wahi pa'a.

'O ka **Papahana Ho'oholomua Kumupa'a**, 'o ia ho'i nā pu'u kālā o ke Kalana i ho'olilo 'ia, me nā 'ōlelo mākia no ka ho'okō hana 'ana ma ka wā he 'eono makahiki e ka'a mau ana. Nāna ho'i e ho'okumu i papahana ho'okele waiwai a me kekahi papa manawa no ka lawe 'ana i ka papahana.

'O Nā Kānāwai Ho'opololei me nā Lula Ho'oponopono, 'o ia ho'i ke Kānāwai Kū i ka Maopopo no ke Kā'e'i 'Āina (CZO), na lula o ka Wahi Ho'oponopono Kūikawā (SMA), a me ke Kānāwai Kaiahale, na lākou e ho'okumu i mau mana'o kūmau no ka ho'ohana 'āina, me ka lawelawe 'ana i ka hana ho'oholo i nā palapala 'ae e hō'ike 'ia ke makemake ka mea ho'ohana e hō'ike aku. Na ka CZO me nā kānāwai ho'oponopono ho'ohana 'āina 'ē a'e e wehewehe aku i ka Papahana Lauā me nā kulekele papahana kaiaulu. Na ia mau kānāwai ho'oponopono e unuhi aku i nā kulekele (nā palapala 'āina a me nā palapala 'ōlelo) ma nā hua 'ōlelo pili loa i kona mana'o āna e wehewehe a'e nei, e like me nā 'ano e hiki ai ke ho'ohana 'ia, nā ki'eki'e o nā hale, me nā koina 'ē a'e.

Pili nā **Pāku'i Ho'ololi Kā'e'i 'Āina** i ka pū'olo 'āina a kekahi mau pū'olo 'āina paha. Hō'ike ka Palapala 'Āina Ho'ohana 'Āina o ka Papahana Lauā ma ka Mokuna 5 i nā ho'ohana laulā 'ia o ka 'āina wale nō no kauwahi ho'i. Na nā ho'ololi kā'e'i 'āina e unuhi aku i ia mau mea ma ka pae "pū'olo 'āina" ma nā Palapala 'Āina Kā'e'i o ke Kalana ma ka Mokuna 5. Ma ka manawa o ke kuhi 'ana i ke kā'e'i 'āina, e ho'oholo 'ia ana nā 'ōlelo e pili i nā hihia he nui, e like me, 'a'ole na'e kaupalena 'ia penei: 'o nā hopena e loa'a auane'i paha nāna e ho'ololi i ka ho'ohana a me ke 'ano ho'i o nā 'āina pili; 'o ka wahi kuhi pono 'ia ho'i o nā 'āina kālepa a kauhale noho ho'i; 'o ka pa'apū o ka ho'omāhuahua kauhale; 'o ka 'ōnaehana alanui; a me ka maika'i o nā 'ōnaepuni a me nā pono lako kaiaulu.

'O ke kūkulu kauwahi ho'okahi me nā kānāwai ho'oponopono kūkulu hale, 'o ia ho'i ke kānāwai kūkulu hale, kānāwai loiloi, a me ka hana maika'i loa no ka ho'okahe wai lepo, he mau hana nui nō ia mau mea no ke alaka'i 'ana i ka ho'omāhuahua 'āina 'ana, me ka mālama 'ana i ka maika'i o ka 'āina.

1.1.3 KA MŌLINA O KA PAPAHA NA LAULĀ

Na ke kumuhana o ka Papahana Lauā, 'o Kaua'i Kākou, 'ike nō ia i ke kūpa'a o Kaua'i, aia nō ia kūpa'a ma kona kaiaulu 'ō'ā 'ia a ikaika ho'i, ma ke hiki iā lākou ke alulike no ka pono o ka hanauna aku a ia hanauna aku. Kū ia mōlina no ko Kaua'i ho'oponopono 'ana i ka ho'omāhuahua o ka wā e hiki mai ana, a e ho'olōkahi ana ho'i i ka hihio, nā pahuhopu, nā kulekele, nā hopena makemake 'ia, nā ala ho'okō hana, me nā palapala 'āina. Kaha ki'i 'ia ka Mōlina o ka Papahana Lauā ma Ki'i 1-2. Wehewehe 'ia nā mahele 'elima o ma kōlina penei:

- Hihio a Pahuhopu - He mau hana kūlia i ka nu'u ke 'ano o ka hihio a me nā pahuhopu. Wehewehe lākou i ka 'oi kelakela o Kaua'i ma kona 'ano he 'āina ma ka hiki 'ana mai o ka makahiki 2035.

Ho'onohonoho 'ia ka hihī'o no Kaua'i ma nā hopena nui 'ehā i kuhi 'ia ma nā hana ana mana'o o ke kaiaulu.

- Nā Kulekele - Na nā kulekele 'umikūmāiwa e ho'ohou a ho'okā'oi i ka Papahana Lauā 2000, me ka 'ike pū 'ana aku i nā hihia hou a me nā mana'o o ke kaiaulu. Ke hui pū 'ia, ho'ākāka pono aku nā kulekele i ke ala o ke Kalana e hele nei, a me nā mea nui e malii ai no ka mālama a ho'oponopono 'ana ho'i i ka ho'omāhuahua kauhale mai kēia mua aku.

- Nā Pahuhopu a me nā Ho'okō Hana ma nā mahele ka'awale - penei nā mahele i kūpono i ka 'ike ho'oko'iko'i 'ia ma ka lawe kulekele 'ana. I lalo o kēlā a me kēia mahele he mau mahele pili ma lalo hou a'e, nāna e wehewehe pono aku i kekahi mau 'ike pili. No kēlā me kēia mahele pili ma lalo he pahuhopu nāna e ho'ākāka ana i ke kulekele pili pono i ia kumuhana. Nānā nā ho'okō hana iā mua a ho'onoho 'ia e ka mea pa'ahana lalawe i noa i ke Kalana. Hō'ailona nā ho'okō hana i ka mea e pono ai ka holomua 'ana o ke kulekele. Komo pū aku ho'i

Ki'i 1-2 Ka Mōlina o ka Papahana Lauā



nā ho'ololi i ke kânāwai kiwikā, nā papahana hou a ho'ohou 'ia paha, nā mea e pono ai ka pilina me nā 'oihana 'ē a'e, me nā papahana. Ma kēia 'ano o ka ho'onohonoho 'ia 'ana e hiki ai i nā mea heluhelu ka 'imi aku a loa'a nā kulekele me ka ma'alahi, a ha'i nō 'o ia i ke 'ano e ho'ohana 'ia ai ka Papahana Lauā. 'O nā hui kanaka nona he kuleana a me ka ho'okūlike 'ana me ke kulekele, hō'ike 'ia ma ke ki'i pūmanamana ('Ōlelo Pāku'i Hou G.)

- Palapala 'Āina Kulekele - Hō'ike 'ia e 'eono palapala 'āina ke kulekele o ka Papahana Lauā. Hō'ike 'ia e ka Palapala 'Āina Ho'ohana 'Āina Mai Kēia Mua Aku ke 'ano o nā wahi e waiho ala me ke 'ano kūpono e ho'ohana 'ia ai 'o ko Kaua'i ho'omāhuahua kauhale i ka wā e hiki mai ana. Kāko'o nā palapala 'āina 'ē a'e i ka Palapala 'Āina Ho'ohana 'Āina Mai Kēia Mua Aku, a komo mai ho'i nā Waiwai Kama'āina, nā Mea Maluhia 'Ole, ka 'Ōnaepuni, nā Pono Lako Lehulehu, a me ka Halihali Kanaka.
- Papahana Lawe Hana - Ma kona 'ano, he palapala pae ki'eki'e ka Papahana Lauā nāna e ho'okele i ka hana, a no ka lawe 'ana a'e i ka hana, koi 'ia ka holomua 'ana ma kekahi mau pae he nui o ka 'ōnaehana ho'olālā ma nā papahana e kū nei he nui. Hana 'ia ka papahana lawe hana o ka Papahana Lauā i mea e kū ai 'o ia i ke kuleana o kânaka, hana pū 'ia me ka poholalo 'ole loa, a komo mai ho'i ka loiloi 'ana, ka mālama 'ana, me ka hō'ike 'ana. Ma kekahi mau ana hana e loa'a ai ke ala e loiloi ai i ka holomua pili i ko ka Papahana Lauā hihi'o, pahuhopu, a kulekele ho'i. Na ka Mokuna 4

e wehewehe kūpono i ia mau ana hana. Ke hui pū 'ia, na ia mau mahele o ka lawe hana e ho'okumu i wahi lina poepoe e hiki ai i ka Papahana Lauā ke ho'oponopono 'ia ma ka wā kūpono ke pono.

1.2 KA MAHELE HANA KŪ I KA LEHULEHU

1.2.1 NĀ 'IKE PILI KŪHOPE ME NĀ 'ANO HO'OKO'IKO'I O KA ULU 'ANA

No ka ho'olālā 'ana no ka wā e hiki mai ana, pono ho'i ke loiloi 'ia nā pō'aiapili a 'ano ho'i e kū nei. Ua komo aku i ka 'Epaki 1 o ka Papahana Lauā Ho'ohou 'ia ka ho'omōhala a ho'ononi 'ana i 'eono mau palapala hō'ike i kū i kahua no nā 'ike hunahuna o ka Papahana, a i mea ho'i e ho'okele ai i ka ho'omōhala 'ana i ke kulekele:

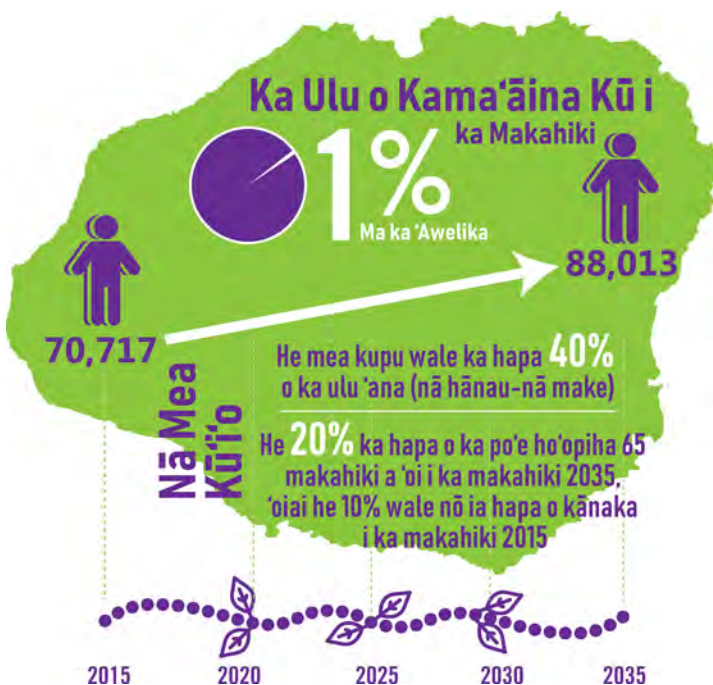
1. Kālaina a Wānana i ka Pilikanaka me ka Ho'okele Waiwai (2014)
2. Kālaina Hopena o ka Ho'ohana 'Āina (2015)
3. Kālaina 'Ōnaepuni (2015)
4. Palapala Loiloi no ka Loli o ke Au me nā Mea Maluhia 'Ole Pilikai (2014)
5. Palapala Hō'ike no nā 'Āina Mahi Ho'oko'iko'i (2015)
6. Papahana Ho'ōla Kaiulu (2014)

Loa'a kahi palapala hō'ulu'ulu o ia mau palapala hō'ike ma ka 'Ōlelo Pāku'i Hou C. 'O Nā 'Ano Ho'oko'iko'i o ka Ulu 'Ana e pili ana i ka heluna kânaka e kū nei, ka ho'olako kauhale, me nā 'oihana, wehewehe 'ia nō penei.

Mai ka makahiki 2000, ua nui a'e ke Kalana ma nā kânaka he 12,000 - mai 58,463 kânaka a 71,000 kânaka i ka makahiki 2015. A hiki mai ka makahiki 2035, e ho'omau ana 'o Kaua'i i kona heluna kânaka kama'āina a malihini kipa mai nō ho'i, pēlā e ulu pū ana ka nui o kauhale a me nā 'oihana. Wānana 'ia ka heluna kânaka he 88,013 kânaka ma mua o ka makahiki 2035 (Pākaukau 1-1). He ulu a'e kēia ma ka 22% ma waena o nā makahiki 2015 a 2035, 'o ia ho'i he 1% o ka makahiki (Ki'i 1-3). 'Oiai na'e na ka ulu wale o kânaka a me ka hiki mai i ka po'e malihini e ho'īnana nei i ka ulu 'ana, ua emi ka pana o ka ulu 'ana i wānana 'ia, a ua pa'a iki kona 'ano kūlanalana ma mua a'e o kekahi mau wā i ka'ahope akula. Kuhi 'ia e kekahi mau loli 'ana o ke 'ano o kânaka ke o'o 'ana o lākou, kaupalena 'ia ho'i ka hiki ke mālama aku i nā 'ano upu wale o ka ulu 'ana e like me ka mea i hala akula ma nā makahiki iwakālua o hope aku.

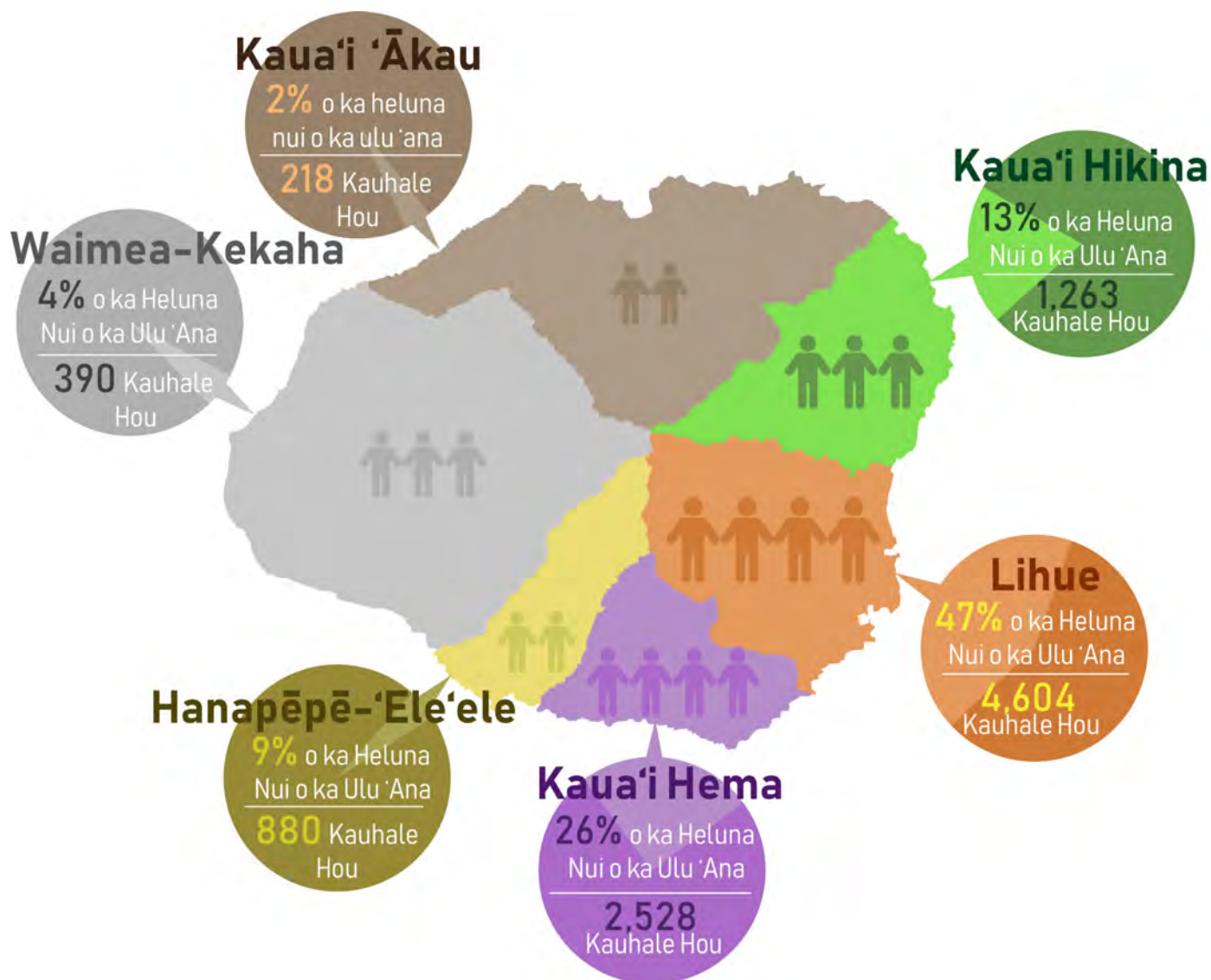
He hana kuhi hopena ka wānana ho'olako kauhale no ka nui heluna kânaka, a kuhi nō ia e kaulike ana ka ho'olako hale e like me ka mea e pono ai. I mea e kuhi ai me ka pololei loa i ka mea e pono ai, ua wānana 'ia ka nui o ke kauhale ma ka pae ho'olālā moku. E like me ka heluna kânaka, e 'oi a'e ana ka nui o ka ulu 'ana ma Līhu'e ma mua o ko nā moku 'ē ('ike iā Ki'i 1-4). Inā kuhi 'ia ka pa'a mau o ka nui o ke kauhale,

Ki'i 1-3 Nā 'Ano Ho'oko'iko'i o ka Ulu 'Ana (2015-2035)



Ki'i 1-4 Ka Ulu 'Ana o Kauhale ma nā Moku Ho'olālā

(e like me ka nui i kuhi 'ia no nā kauhale e pono ai mai ka makahiki 2010-2035)



wānana 'ia ka nui o ka ho'olako kauhale he 39,676 ('ike iā Pākaukau 1-2). Kū kēia i ka ulu kūmakahini 'ana ma ka 1.2% o ka makahiki.

Mai ka makahiki 1990 mai, ua 'ano nui nā 'oihana i loa'a mai mai loko mai o ka pā'oihana ho'okipa malihini (ka pāheona, nā hana ho'ohau'olu, nā hana ho'onanea, nā hana ho'olako, ka ho'olako mea 'ai/inu). Ma ka ulu 'ana o ka pā'oihana ho'okipa malihini me nā mahele 'ē a'e e nui a'e ai ka heluna nui o nā 'oihana he 34,000 ma ka hiki mai o ka makahiki 2030 ('ike iā Pākaukau 1-3). 'O ka ulu 'ana ma ka makahiki o nā 'oihana, ua kuhi 'ia ke 0.79% a hiki i ka makahiki 2020. Ma waena o nā makahiki 2020 me 2030, kuhi 'ia ka ulu 'ana o nā 'oihana ma ke 0.66% o ka makahiki. Wānana 'ia ke emi

hou 'ana o ka ulu 'ana ma ke 0.53% ma waena o nā makahiki 2030 me 2035, 'o ka hopena paha ia he 34,900 'oihana ma ka hiki mai o ka makahiki 2035.

'O ka heluna i wānana 'ia no ka nui o ka po'e malihini e hiki mai ana, hō'ike 'ia he ulu 'ana ma ka 1% o ka makahiki ma waena o nā makahiki 2010 me 2035 ('ike iā Pākaukau 1-4). E emi iki ana ia ma ia wā. Inā hiki ke hilina'i 'ia ka wā i hala, hiki nō ke mahu'i 'ia kekahi hanana nāna e ho'ōkupe i ka pā'oihana ho'okipa malihini i kēlā me kēia 'elima a 'umi paha makahiki. 'O ka mana'o o ia mea, 'o ka nui malihini e hiki mai auane'i i Kaua'i, e pi'i ana e emi ana nō ho'i paha, e like me ia i 'ike 'ia ma nā makahiki he 25 i hala akula.

Pākaukau 1-1 Heluna Kānaka, Mokupuni a Puni a ma ka Moku Ho'okahi (1990-2035)

	1990	2000	2010	2020	2030	2035
Kalana o Kaua'i	51,676	58,463	67,091	74,693	83,328	88,013
Līhu'e	11,169	12,507	14,683	18,017	21,595	23,456
Kaua'i Hema	9,600	10,545	11,696	13,623	15,737	16,855
Hanapēpē-'Ele'ele	3,873	4,362	6,157	6,463	6,860	7,094
Waimea-Kekaha	4,698	5,660	5,561	5,901	6,323	6,566
Kaua'i Ākau	5,913	6,605	8,002	8,286	8,686	8,933
Kaua'i Hikina	16,192	18,784	20,992	22,403	24,128	25,110

Pākaukau 1-2 Ka Nui Kauhale e Pono ai, Wānana 'ia a Hiki Mai ka Makahiki 2035

	Makahiki					
	1990	2000	2010	2020	2030	2040
Kalana o Kaua'i, Heluna Nui Kauhale	17,613	25,331	29,793	33,553	37,519	39,676
Kalana o Kaua'i, Heluna Nui Kauhale i Hiki ke Loa'a	16,985	21,398	24,915	28,085	31,379	33,169
Kalana o Kaua'i, Heluna Nui Kauhale Noho 'ia	16,253	20,370	23,240	25,902	28,788	30,349
'Awelika o ka Ulu 'Ana Kūmakahiki		4.4%	1.8%	1.3%	1.2%	1.1%

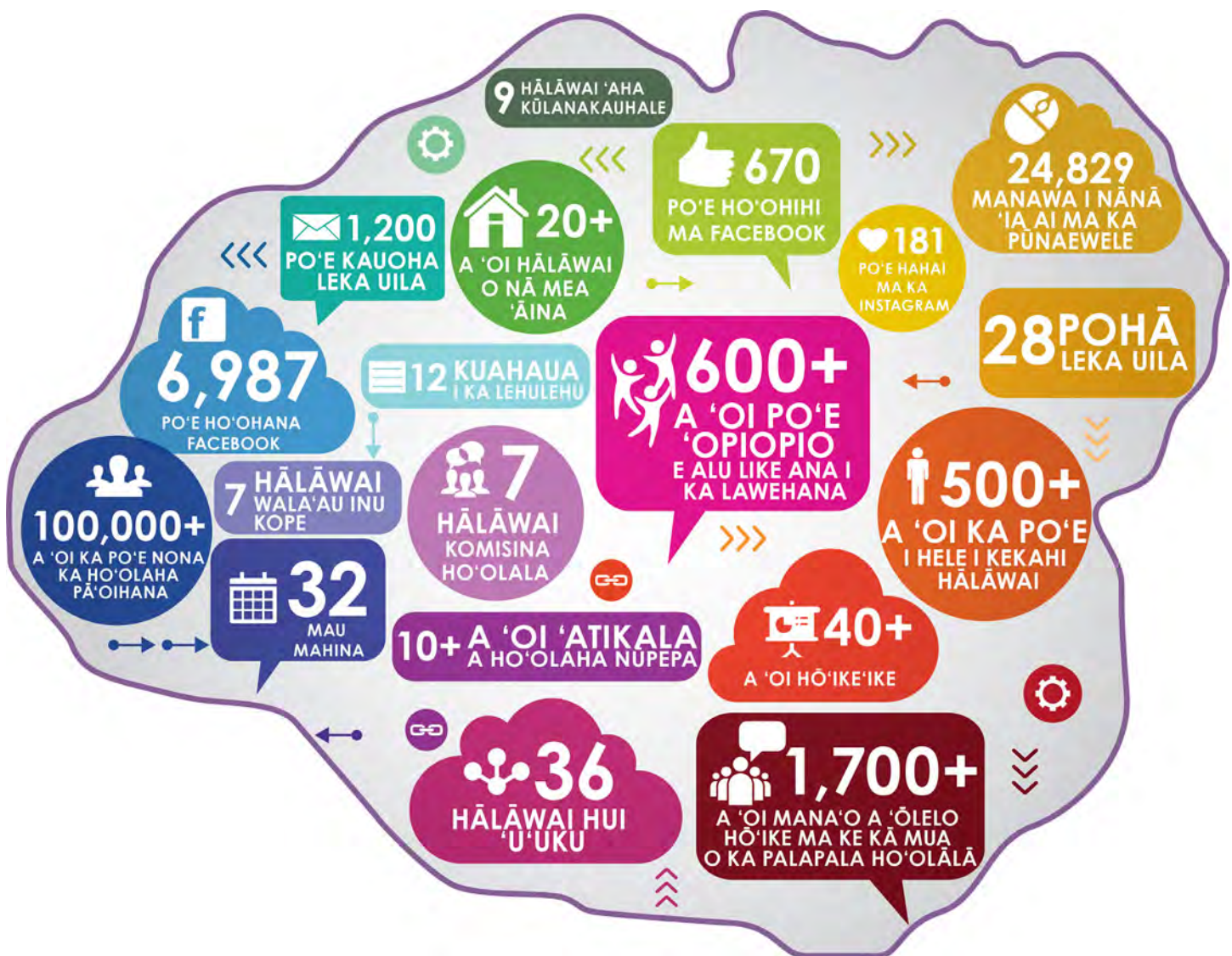
Pākaukau 1-3 Ka Ulu 'Ana o nā 'Oihana, Wānana 'ia a Hiki Mai ka Makahiki 2035

	Makahiki					
	1990	2000	2010	2020	2030	2040
Kalana o Kaua'i	25,250	26,550	28,150	31,900	34,000	34,900
'Awelika o ka Ulu 'Ana o ka Makahiki		0.51%	0.60%	1.33%	0.66%	0.53%

Pākaukau 1-4 Ka Nui Malihini E Hiki Mai, Wānana 'ia a Hiki Mai ka Makahiki 2035

	Makahiki					
	1990	2000	2010	2020	2030	2040
Kalana o Kaua'i (ho'onui 'ia e 1000)	1,229	1,075	955	1,302	1,418	1,480
Ka Loli 'Ana i Kēia Mau Makahiki he 'Umi		-13%	-11.2 %	26.7 %	8.1%	4.2%
'Awelika o ka Loli 'Ana Kūmakahiki		-1.3%	-1.2%	2.7%	.8%	.4%

Ki'i 1-5 Ke Ākea o ko ka Papahana Lauā Mahele Hana Kū i ka Lehulehu



1.2.2 HE PAPAĦANA I HO'okele 'IA E KA HIHI'O O KE KAIAULU

Aia ma ka hihio o ke kaiaulu ka Papahana Laulā. Ma ka Mahele Hana II o ka hana ho'ohou, ua nui ka 'imi 'ana i nā mana'o o ka lehulehu nāna e ho'omōhala i ka Papahana. Ua komo mai nā kānaka he mau kaukani ma nā ala like 'ole e like me nā hālāwai noa i ka lehulehu, nā hālāwai ho'ona'auao, ka pāpaho pili kanaka, ka pili aku pili mai ma ka 'enehana, nā hālāwai kaiaulu a hui 'u'uku, nā hanana kūikawā, me ka palapala ana mana'o i pane mai ai he 1,000 a 'oi kanaka. Ua ho'okele 'ia ka hihio, nā pahuhopu, nā kulekele, nā pahukū, a me nā hana ho'okō e nā mana'o i ana 'ia mai ka lehulehu mai, pēlā pū me nā ke'ena 'oihana, me ke Kōmike Kama'āina Hō'ike Mana'o.

Ua 'ohi 'ia nā 'ike me nā mea hou ma ka lou pūnaewehe (www.plankauai.com). I laila i komo ai nā palapala hō'ike mana'o kaiaulu, nā palapala 'imi 'ike loea, nā pepa ke'oke'o, nā 'ōlelo hō'ulu'ulu no nā hālāwai, me nā palapala 'ē aku i pili kūpono. Na Kī'i 1-5 e ho'ākāka aku ke ākea o ka mahele hana kū i ka lehulehu, mai Pepeluali 2018. Wehewehe piha 'ia ia mahele hana a ka lehulehu ma Appendix B.

1.2.3 KE KAULIKE I KE KULEKELE ME KA LAWEHANA E HO'OKŌ AI

Ua maika'i nā mana'o me nā pane ma o ka mahele hana kū i ka lehulehu e pili ana i ka Papahana Laulā o ka makahiki 2000 no kona hihio i ha'i pono 'ia akula me kona mau pono ho'i. Akā, nui ka po'e i kuhi mai i kekahi mau hemahema no ka hiki 'ole i ka Papahana Laulā o hope ke kuhi aku i nā mea pono e mālama ai i ka ulu 'ana, me ka hō'ike pū mai i ka lehulehu me ka po'e mana nāna ka 'ōlelo ho'oholo i nā ala kūpono e ho'okō ai i ka papahana. Eia ho'i, 'o ka nui o nā mana'o a 'ōlelo ho'i o ke kaiaulu, ua pili nui aku i na hewa o ko lākou mau kaiaulu, nā hemahema e ho'oponopono ai, me nā 'ano i pohō ai lākou i ko lākou aupuni.

'O nā hihia i kuhi 'ia e ka lehulehu ma kēia mahele hana, 'a'ole i 'oko'a loa ia mau hihia e 'alo ana ke kaiaulu ma mua o ka hiki aku o melenio. Akā na'e, 'o ka ho'oko'iko'i ma nā hemahema me ka hopohopo o ka mana'o, ua nui 'ino maila -- e kū hō'ailona ana paha i ka nui o nā hihia i hele a 'ino'ino loa mai kēlā mua mai. Ma ka ho'oponopono 'ana, ho'omōakāka aku ka papahana i ke kulekele me kona ala, e like me nā pono kaiaulu e kū mau mai i kahua no ka Papahana Laulā o ka makahiki 2000:

- 'O ka ho'omalū, ka mālama, me ka ho'onanea 'ana o ko kākou mau wahi ka'awale, ka nani laha 'ole o ka 'āina, ka nohona kua'āina, ka ho'olaule'a kaupokulani me nā pāka.
- 'O ka mālama mau 'ana i nā 'āina lawai'a me nā kumu waiwai 'ē a'e, i mea e hiki ai i kānaka a me nā 'ohana ke 'imi i ko lākou pono iho ma ka hana 'ana i luna o ka 'āina.
- 'O ka hiki i nā mea a pau ke kipa ma nā kahakai,

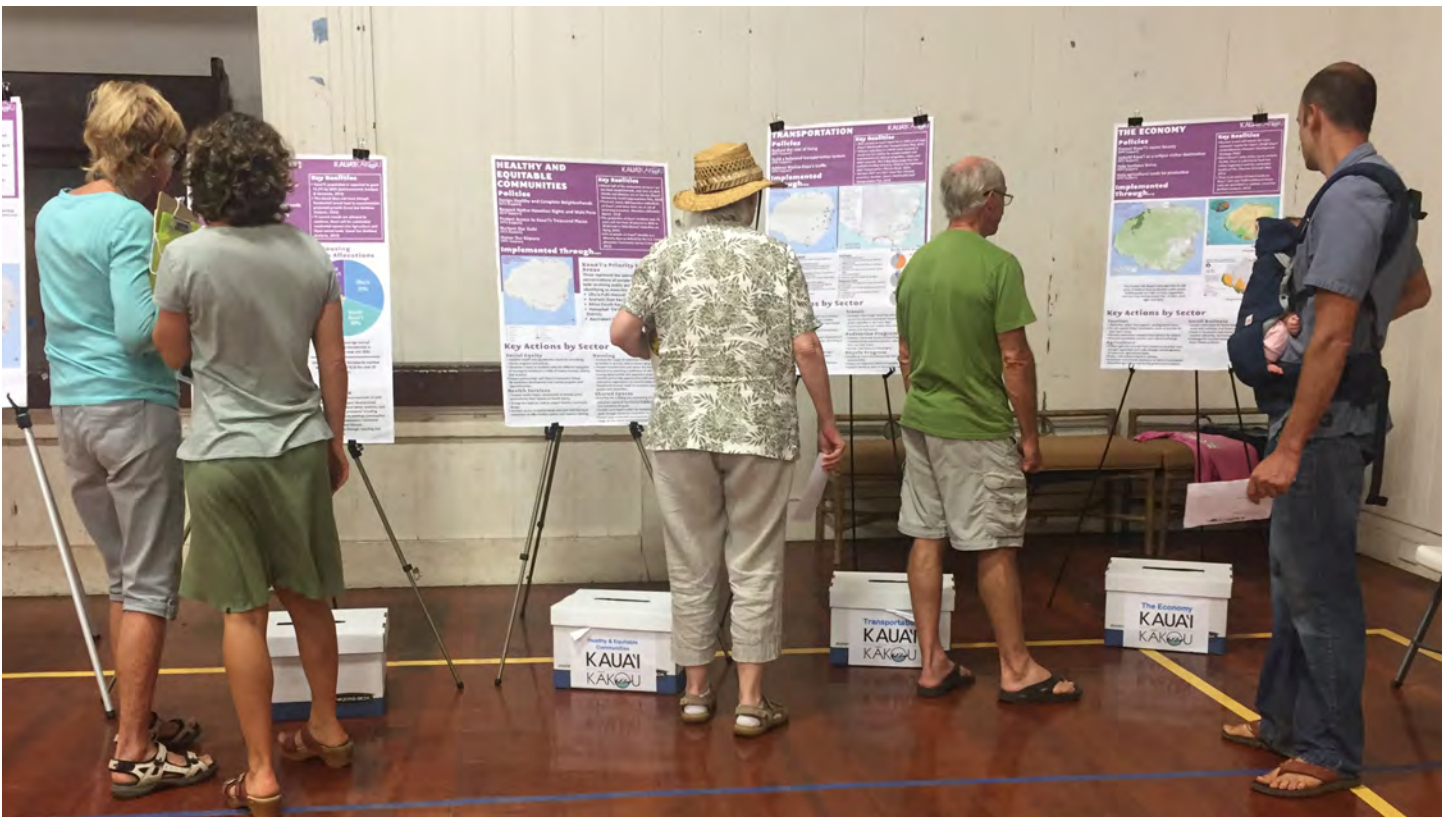
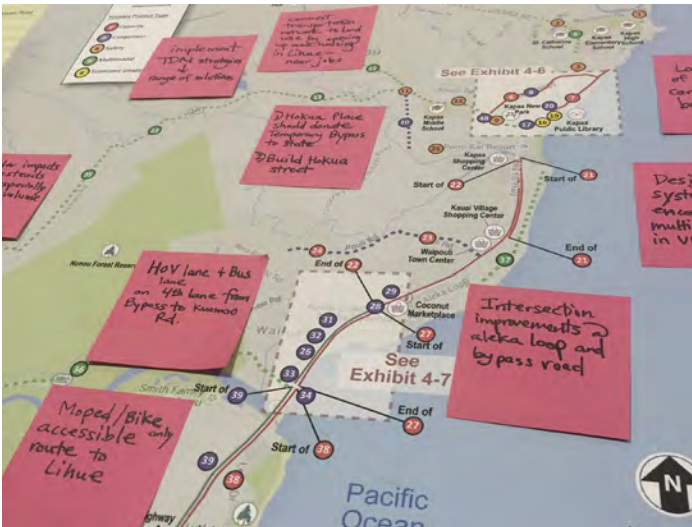
kahawai, a mauna ho'i. Akā na'e, e kaupalena 'ia paha ka hiki ke kipa i nā wahi i pono ka mālama 'ana i ona mau kumu waiwai i mau ai ka maika'i o nā wahi noa i ka lehulehu no ka lawai'a, alualu holoholona, ho'onanea, me nā hana ma uka i ho'ohena 'ia e ke kaiaulu.

- 'O ka 'ike 'ana 'o ko kākou kaiaulu 'o ia ko kākou ala ho'okele waiwai, ko kākou mana, me ko kākou kumu e holomua aku ai.
- 'O ka ho'oponopono kaulike i ko kākou kaiapuni i kūkulu 'ia, 'o ka ho'opa'apū i nā kauhale hou ma kahi o nā kauhale e kū mua ana, me ka mālama 'ana i ka palena he 'ehā wale nō papahale o ka hale.
- 'O ka 'ō'ā o nā 'oihana me nā hana ho'oholomua pili i ka pā'oihana i mea e hiki ai i nā mea a pau, mea 'ole ko lākou akamai a hemahema paha, ke 'imi a loa'a ko lākou pono me ka pono o kona 'ohana.
- 'O ke aupuni nāna e kākō'o a paipai i ka pā'oihana.
- 'O ka ulu kaulike 'ana pili i ka ho'okele waiwai nāna e paipai i ka loa'a mau o ka 'oihana maika'i me ka ikaika o ka ho'okele waiwai, ma ke 'ole o ma mōhai 'ana i ka 'āina me ka nohona maika'i paha o kākou.
- 'O ka hō'ihi me ka ho'omalū 'ana i nā lōina a pono ho'i o nā lāhui like 'ole o kākou, e like me nā koina kānāwai me ke kuleana o kākou ma ke 'ano he mau kama'āina.
- 'O ka mālama mau 'ana i ko kākou mau wahi pana i piha i ka 'ike kūpuna a 'ike ku'una, me ke anoano 'ihiihi, me nā mea i kūkulu 'ia i ka wā i kala loa.
- 'O ka mahalo me ke kākō'o i nā lōina a ka lāhui Hawai'i nāna e ho'okipa mai, me nā pono a lōina ho'i o nā lāhui 'ē a'e he nui e piha ai ke kaiaulu o Kaua'i.
- 'O ka mahalo me ke kākō'o i ka hana o ka pā'oihana ho'okipa malihini ma ka mālama a hō'ihi 'ana i nā lāhui a pau me ko lākou mau pono i kumu alaka'i no ko Kaua'i kālā loa'a mai, a i mea kākō'o ho'i i nā 'aha ho'olaule'a kama'āina, nā hana ho'onanea, ka pāheona, a me ka mo'omeheu.
- 'O ka ho'omalū 'ana i ko Kaua'i 'ano laha 'ole.
- 'O ka 'ike 'ana i ka laha 'ole o ko kākou mau kaiaulu, e kākō'o ana i ia mau kānaka nona nā a'a me ka mo'okū'auhau ma ia mau kaiaulu i mea e ola makalapua mau aku ai lākou me ka hānai aku i ko lākou 'ohana i laila.
- 'O ka maluhia no nā kama'āina a malihini a pau loa.
- 'O ke kākō'o no ko kākou po'e 'ōpiopio, me ke ho'ona'auao iā lākou e holomua.
- 'O ke kono nui 'ana i ka lehulehu e komo mai i ka hana ho'olālā.

Ho'oko'iko'i loa ka Papahana Laulā i ko Kaua'i mau pono waiwai nāna e kia nui ka mana'o i nā mea e pili ai kākou, 'a'ole ho'i e ka'awale ai, nāna ho'i e ho'opili aku i ia mau pono ma nā kulekele e noho ana mai luna mai, a lawe aku auane'i ho'i i ia kulekele ma nā hana akāka.

Ua hāpai 'ia nā mana'o hopohopo no ka nui o ke kau mana'o 'ana ma nā pilikia i kupu mai i ka wā i hala, he mea paha ia e ke'ake'a 'ia ai ka 'ōlelo kūpono 'ana no nā kulekele e pono ai ka holomua 'ana o kākou. 'O kekahi mana'o hopohopo, na ka ho'oko'iko'i ma ka ho'okō hana wale nō e ālai ka mana'o ma ke kahua pā'a maika'i nāna e ho'okele i nā mana'o a 'ōlelo ho'oholo ho'i.

Ma ka ho'oponopono 'ana, kama'ilio 'ia ma "Nā Kulekele Ho'okele i ka Ulu 'Ana" ke 'ano kūpono o ka mana'o 'ana e pili ana i nā kulekele, a ho'olako 'ia ho'i he mau 'ike kūhohonu no ka ho'oholomua 'ana o kēlā a me kēia mea iā kākou. Eia ho'i, ma nā hana ho'okō ma kēlā me kēia mahele, wehewehe 'ia nā pahukū e pili pono ana i ka like mau o nā kulekele.



Nā Mahele Hana Kū i ka Lehulehu no Kaua'i Kākou

1.3 KA HIHI'O ME NĀ PAHUHOPU

Na ka hihi'o e ho'okumu i ka hopena kūloa ma o kekahi mau 'olelo i ho'onoho 'ia ma nā pahuhopu e noho ana mai luna mai penei:



He Mokupuni Mauō

'O ka ulu kūpono 'ana e pau ai nā hemahema o nā hanauna e kū nei me nā hanauna aku me ka 'ole o ka ho'opau loa i nā kumuwaiwai.

- He 'āina mauō 'o Kaua'i, aia kona mole ma nā lōina o ke aloha me ka mālama 'āina, a he kupaianaha i kona mau 'āina momona.
- He wahi 'o Kaua'i nona ka mālama 'āina me ka ho'iho'i hou 'ana i nā kumuwaiwai 'āina a wai ho'i e loa'a ai ke kahua no nā kulekele ho'omauō no ho'ohana 'āina, 'ikehu, 'ōnaepuni, launa kanaka, me ka ho'okele waiwai.



He Wahi Lua 'Ole a Nani Ho'i

'O ka mālama 'āina me ka ho'omalū i nā waiwai 'āina, mo'olelo, kānaka, a me nā lako i kūkulu 'ia, he mau waiwai no ke kaiaulu.

- He wahi 'o Kaua'i nona ka nani o ka 'āina, e ho'ohanohano ia i kona ho'oilina Hawai'i, e ho'ohihi i kona mau wahi pana, a e kū nō ia i ka 'ōā o nā 'olelo me nā lōina.
- He mokupuni 'o Kaua'i nona nā kaiaulu lua 'ole e kū lōkahi ana ma ka pahuhopu ho'okahi 'o ka mālama aku mālama mai i nā hoa noho me nā 'ohana.
- He wahi 'o Kaua'i kahi e mālama 'ia ai kona 'ano kua'āina me kona mau 'āina kanaka 'ole ma ka mālama 'ana i nā kaiaulu i kūkulu pa'apū 'ia ma kauwahi ho'okahi, a ho'oka'awale 'ia ho'i e kekahi mau wahi hakahaka a nani ho'i i ka 'ike a ka maka.
- He wahi 'o Kaua'i nāna e ho'okipa malihini me ka ho'olako pū i nā pono lako maika'i me nā hana like 'ole no ka ho'onanea 'ana i nā mo'olelo kahiko me nā hana le'ale'a, me ka ho'omau 'ana i nā lōina 'o ke aloha me ka mālama 'āina.



He Po'e Olakino Maika'i me ka Na'au 'Onipa'a

'O ka ho'ōla 'ana i ke kaiaulu me ke ola makalapua ho'okawowo ma ka ho'oholomua 'ana i nā 'āina, nā kauhale kūkulu 'ia, me nā wahi pili kanaka, me ka ho'oponopono 'ana i nā hopena o ka loli o ke au.

- He wahi 'o Kaua'i nona ka po'e olakino ikaika e noho me ka pōmaika'i ma nā kaiaulu, nā pono lako e maluhia ai no hele wāwae a holoholo paikikala, nā wahi e 'aha a luana ai, me nā wahi no ka pāheona a mo'omeheu ho'i.
- He kaiaulu 'onipa'a ko Kaua'i e 'auamo like i ke kuleana ho'olālā no ka wā e hiki ana, me ka ho'omākaukau akamai 'ana no nā loli, a ho'olako ho'i e pau ai nā hemahema o kamali'i a kūpuna ho'i.
- He wahi 'o Kaua'i nāna e kāko'o nui aku i ka 'oihana mahi'ai me ka 'ōā o nā lōina mahi'ai, e loa'a pono ai ka 'ai me kekahi mau mea pono e lawa ai ko Kaua'i mauō pono'i ia iho..



He Wahi Kaulike, i Manawa Kūpono no nā Mea a Pau

'O ka hānai 'ana i mau kaiaulu 'ōā a kaulike ho'i nona ka ho'okele waiwai e ola makalapua ai, ka hiki ke loa'a mai ka 'oihana, me ka nohona maika'i loa.

- He mokupuni 'o Kaua'i nona nā manawa kūpono kahi o nā pā'oihana, ka 'oihana hale 'u'uku, me ka po'e pā'oihana kūkawowo e ola makalapua ai, kahi ho'i e hiki ai i ka po'e 'ōpiopio ke 'imi a loa'a ka na'auao, ka ho'okawowo, me ka hiki ke holomua ma ka ho'okele waiwai.
- He wahi 'o Kaua'i kahi e hiki ai i nā mea a pau, mea 'ole kona makahiki a kālā loa'a mai ho'u, ke 'imi aku a loa'a mai ke kauhale, he mea kū i ke kahua o kēlā me kēia kaiaulu, he wahi ho'i ia e noho ai kānaka ma kahi kokoke i ka 'oihana me nā hana lawelawe.

PAHUHOPU #1: HE MOKUPUNI MAUŌ

‘O ka mauō, ‘o ia ka ulu na‘auao ‘ana e pau ai nā hemahema o nā hanauna e ola nei me ia haunana aku me ka ‘ole o ka ho‘opau loa ‘ana i nā kumuwaiwai ko‘iko‘i.



‘Ae like nui mai ko Kaua‘i mau kama‘āina, na ka ho‘omauō e ho‘okele i ka ho‘olālā ‘ana mai kēia mua aku. Na ia mea e ‘ike i ko Kaua‘i ‘āina kanaka ‘ole, nāna e ho‘okumu i ke kahua o ke kaiaulu mauō a kaulike ho‘i, aia ho‘i, nāna ho‘i e ho‘okahua a kākō‘o i ke ho‘okele waiwai mauō. Na ka Papahana Lauā Makahiki 2000 i holomua loa ma ka ‘ike ‘ana i nā pahuhopu ho‘omauō no ke Kalana, ‘o kēia Papahana Lauā nei na‘e ka mea nāna e lawe ana i ia mea ma ke ‘ano he pahuhopu nui e noho ana mai luna mai.

‘O ka ho‘omāhuahua kauhale ‘ana kū i ka mauō, ‘a‘ole ia e ho‘opilikia aku i nā mea o ke ao nona mai ke ola o kōkō: ‘o ke ea, ka wai, ka lepo, me nā mea ola o kōkō ‘āina. ‘O kēia ‘ano hana, ‘o ia ho‘i ka ho‘opau ‘ana i nā hemahema o kōkō me ka ho‘olako ‘ana i nā mea a pau i ka hiki ke ‘imi aku i ko lākou pono no ka nohona i maika‘i a‘e. ‘O kekahi mea nō, ‘o ia ke komo ‘ana o nā mana‘o pili i ka ho‘okele waiwai me ka ‘āina ma loko o ka hana haku kulekele a ho‘oholo ‘olelo ho‘i. ‘O kekahi mea nui e pili ana i ka ho‘omauō, ‘o ia ka mālama ‘ana i ka ho‘omāhuahua me ka ‘ole o ka hana ‘ino ‘ana i ka ‘āina me na wao kanaka ‘ole.

Nui ka po‘e e mana‘o ana i ka piha‘ū a ‘ane‘ane piha‘ū paha o ka mokupuni i nā kumuwaiwai, e like me nā pāka, nā alanui, me ka ‘ōnaepuni lehulehu. He hopohopo ho‘i ko lākou i nā kumuwaiwai o Kaua‘i me ka lākou ho‘opau loa ‘ia ‘ana, a he mea ‘a‘ole hiki ke ho‘oponopono hou. ‘O ka ho‘oponopono ‘ana i kēia mau mea me ka mana‘o i ka ho‘omauō, ‘o ia ka loiloi ‘oia‘i‘o ‘ana i nā ‘ano pō‘aiapili e kū nei, me ke kuhi ‘ana i nā mea pono a kumuwaiwai ho‘i e hiki ke loa‘a mai no ka ho‘omauō a ho‘omalua ‘ana i ia mau mea mai kēia mua aku.

Ua laha makemake i ka mālama a kaupalena ‘ana i ka ulu ‘ana a‘e, ka nui o ka po‘e malihini kipa mai, me ka ho‘omāhuahua kauhale ‘ana ma Kaua‘i. ‘Ae like ‘ia ka mana‘o e pili ka ulu ‘ana a‘e i nā wahi kikowaena e kū nei no ka ho‘oikaika ‘ana i ka ‘ōnaepuni me

ka hiki ke mālama ‘ia nā wahi hakahaka, a hiki ho‘i ke holomua ke olakino o kōkō. E ho‘olako ‘ia ka ‘ōnaepuni maika‘i i mea e kākō‘o ai i nā hemahema e kū nei me nā hemahema e mahu‘i ‘ia nei kekahi.

No ke kaiaulu ho‘omauō ka pilina ikaika a ‘ō‘ā ma waena o ka po‘e like ‘ole o ka makahiki, ka lāhui, ke kōkō ho‘okele waiwai, a me ka hiki iā ia ke ola me ka makalapua. Makemake like lākou e ho‘oikaika i nā kaiaulu i hiki ke ‘alo i nā pilikia pili i ka ho‘okele waiwai a me ka ‘āina, me ka hiki ke ho‘opau i nā hemahema o kamali‘i a kōkō ho‘i. Koi ‘ia e ka ho‘okele waiwai ho‘omauō ka hiki i kōkō ke hānai iā ia iho, me ka ho‘olako i ka ‘ikehu me nā kumuwaiwai ‘ē a‘e. ‘O ia ho‘i na kēlā me kēia kanaka e ‘auamo ke kuleana ‘o ke ho‘ēmi ‘ana i kona hopena ma ke kaiapuni ma kona nohona pono‘i me kona ‘ano o ka ho‘ohana ‘āina.

‘O ka ‘ike ‘ana i ko ke Kalana kōkō ma ke ao ‘oko‘a kekahi ‘ao‘ao o ka ho‘omauō. I la‘ana, i pilikia maoli iholo ka ho‘omauō i ka loli ‘ana o ke au o ka honua, e kōpono loa ke ho‘ēmi ko Kaua‘i i ka ho‘opua ‘ana i nā kinoea kōpono ‘ole no ka ‘āina, a e lawe mai i mau ‘ano o ka noho ‘ana e maika‘i ai ka ‘āina. Ikaika mai nā papahana ho‘omauō kōkō i ke kōkō ‘ana ma ia ‘ano o ko ka moku‘āina. I ka makahiki 2008, ua pā‘a pono akula ko Hawai‘i Papahana Ho‘omauō no ka Makahiki 2050. I ka makahiki 2014, ua pūlima akula ke Kalana i ka palapala Aloha+ Challenge, he ho‘oikaika o ko ka moku‘āina e lawelawe i ka ho‘olālā ho‘omauō me ona mau pahuhopu ma ka hiki mai o ka makahiki 2030. ‘O nā mana‘o ho‘oko‘iko‘i ‘ia o ia papahana, ‘o ia nō ka ‘ikehu ma‘ema‘e, ka mahi‘ai kū i ka ‘āina kōkō, ka ho‘oponopono ‘ana i nā kumuwaiwai ‘āina, ka ho‘ēmi ‘ōpala, nā kaiaulu na‘auao ho‘omauō, me ka lawehana a ho‘ona‘auao kū i ka mauō. ‘Ae like ka Papahana Lauā me kona mau māhelehele a loiloi hopena me kēia mau wahi mana‘o ho‘oko‘iko‘i ‘ia.

Ua wehewehe ‘ia e ka Komisina Brundtland o Nā Lāhui Hui Pū ‘Ia, ‘o ka ho‘omāhuahua kauhale ho‘omauō, ‘o ia ka “ho‘omāhuahua kauhale e pau ai nā hemahema e kū nei me ka ‘ole o ka ho‘olawe ‘ana i ka hiki i ko ka po‘e o kēia mua aku ke ‘imi a loa‘a ko lākou pono.”

- Nā Lāhui Hui Pū ‘Ia, 1987

Nā Leo Kaiaulu

“Ma ka ‘i ‘ana mai o R. Murrow, he mea kākō mo‘olelo no ‘Amelika, 1908-1965: “O ka mea pohihihi, e ‘ike auane‘i kākō. ‘O ka mea ahuwale, ‘a‘ole nō paha kākō e ‘ike a li‘uli‘u wale iholo.”

“Aia ho‘i, e kala loa ko kākō kali ‘ana iho, no laila kākō e haku a kōkō ai i wahi ‘hānai iā ia iho, i ho‘omauō ‘o Kaua‘i no ko Kaua‘i po‘e.’ Ke ‘ae aku nei nō wau, i wahi ala kākō e hahai mai ai ko waho po‘e o ka moku ‘āina, o ‘Amelika, o ka honua a puni, ‘o ia ko kākō kōkō e pono ai, i ho‘oilina no kamali‘i me ia hanauna aku!”

PAHUHOPU #2: HE WAHI NANI KŪ 'OKO'A

Kuleana like ko Kaua'i po'e, 'o ia ho'i ka mālama a ho'omalua 'ana i nā kumuwaiwai, nā hana ku'una, a me nā pono o ka 'āina, nā mea kūkulu 'ia, a me nā mea o kōkō.



'O ko Kaua'i kaiaola kūlohelohe a me nā 'ano lāhui like 'ole, 'o ia nā mea e kū 'oko'a maoli ai 'o Kaua'i. 'A'ole nō e hiki ke pani aku i ia mau 'ano a me ia mau nānaina a 'a'ole lākou e loa'a ma nā wahi 'ē a'e o ka honua, a no laila e ho'omalua mau ai lākou a mau loa. I mau la'ana nō ho'i: 'o nā mea 'āpa'akuma me nā mea 'ane halapohe, nā hale kahiko ko'iko'i, nā wahi hulikoehana, nā 'ike ku'una, nā mana'o ku'una, nā loina, nā mo'olelo, a me nā wahi pana.

He mana'o ku'una ka ka mālama 'āina 'ana e like me kā ka po'e Hawai'i kahiko, e like me ke 'ano i ho'omāhelehele 'ia ai nā ahupua'a, e hiki ke kāko'o i ka ho'omāhuahua 'ana a me ka mālama 'ana iā Kaua'i. Eia ho'i, he pono nō ke kahukahu 'ana a me ka mālama 'ana i nā kumuwaiwai kūlehulehu i pa'a ma ka 'Atikala 11.1 o ke Kumukānāwai o ka Moku'āina o Hawai'i no ka mālama 'ia 'ana:

"No ka pono o kēia wā a me ka wā e hiki mai ana, e mālama a ho'omalua ka Moku'āina a me nā ke'ena politika ma lalo iho i ke 'ano nani kūlohelohe a me nā kumuwaiwai kūlohelohe o Hawai'i, pau pū me ka 'āina, ka wai, ke ea, nā pōhaku, a me nā kumu ikehu e like me ka mea e pono ai ko lākou mālama mau 'ia 'ana no ka mauō o ka moku'āina. Mālama 'ia nā kumuwaiwai kūlohelohe e ka Moku'āina no ka pono o kōkō."

Mālama 'ia ka nui o ia mau kumuwaiwai e nā ke'ena pilikahi, a i 'ole, kā'ana 'ia ka mālama 'ana ma waena o nā kūlana like 'ole o ka moku'āina. Hō'ike ka Papahana Laulā i ia mau kumuwaiwai a me nā kūlana e pono ai ka mālama 'ia 'ana. Hō'ike ho'i ia i nā pilikia, a ho'olālā 'ia nō ho'i nā kulekele e ho'oikaika ai, e mālama ai, a e kāko'o ai ho'i. Hō'ike ka 'Āpana Kumuwaiwai Ho'oilina i nā kumuwaiwai ko'iko'i loa e mālama ai.

Nā Leo o ka Lehulehu

"He alii ka 'āina, he kauā ke kanaka. Inā e mālama kākou i ka 'āina, e mālama ho'i ka 'āina iā kākou. He pono ka mana'o o ka lehulehu i ke ko'iko'i loa o ka lawe wale 'ana nō i ka mea e lawa pono ai; ke kā'ana 'ana aku inā e keu ana i ka mea e pono ai; ka ho'ohui 'ana i nā kumuwaiwai ke hiki; ke kōkua 'ana e like me ka mea hiki ma ke 'ano he kuleana."



Awāwa Kūhōhō 'o Waimea, Moku 'āina o Waimea-Kekaha

PAHUHOPU #3: HE PO'E KŪPA'A A IKAIKA

'Imi ana mākou i ke ala e ho'okūpa'a a ho'oikaika hou ai i ko Kaua'i kānaka a paipai aku ho'i i ke olakino maika'i ma o ka ho'oponopono 'ana i ke ao kūlohelohe, nā mea i kūkulu 'ia, a me ka pilina kanaka.



'O ke olakino maika'i, he kūpono ke kino, ka no'ono'o, a me ka pilina kanaka. 'A'ole ho'i 'o ka ma'i 'ole a pilikia 'ole wale 'ana nō.

Kumu: World Health Organization, 1946

He mea ho'oholo nā mea i kūkulu 'ia no ke olakino, 'o ia ho'i ka maika'i a me ke emi o ka hale; ka hiki ke holo wāwae a holo paikikala paha i nā wahi e pono ai; ke kokoke o nā kula ho'ona'auao, ke kauka, a me nā pono lehulehu; ka lako i nā mea'ai pono, a me ka loa'a o nā wahi ho'onanea a me nā wahi ho'oikaika kino.

He mau haunauna ko nā kaiaulu kūpono kekahi, e kōkua ana ma nā pono a pau o nā keiki a nā kūpuna. Ho'oikaika 'ia ho'i ka maika'i o nā kaiaulu me nā mea'ai pono i mahi kūloko 'ia, nā kaiahome holo wāwae 'ia, nā 'āina kūlohelohe i mālama 'ia, a me ka lako i nā 'oihana e pono ai ka nohona kūpono.

Pili ia 'ano pa'a 'ana i noke mau o ka 'ōnaehana i nā pilikia a mau ana nō ka holomua a me ka pa'a.

Kumu: Walker me Salt (2006)

Maopopo i nā kaiaulu pa'a ko lākou ikaika me nā wahi nāwaliwali, a pa'a ho'i nā kumuwaiwai a me nā mea kōkua e pono ai ka mauō 'ana i ka loli mau o ke au. Ma muli o ka mau 'ana o Kaua'i ma hope o nā 'ino ho'opilikia, maka'ala maoli ka po'e o Kaua'i no ka ho'omākaukau maika'i 'ana a me ka ho'oponopono 'ana ma hope o nā pilikia. He mea maika'i ia maka'ala 'ana no ka ho'olālā 'ana i nā mea e pono ai nā wā pilikia ma muli o ke aniau loli a i 'ole ka lolelua 'ana o nā waiwai.

'O ka mauō kekahi mahele o ka pa'a. 'O ia ho'i ka ho'onui 'ana i ka mea'ai mahi kūloko 'ia a me nā mahina no ka ikehu a me ka lau. 'O ia ho'i ka ne'epapa 'ana i ka ikehu ho'ohana hou 'ia ma kahi o ke kauka'i 'ana i nā 'aila ikehu mai waho mai. 'O ia ho'i ka ho'opa'a kūpono 'ana i nā 'ōnaepuni ko'iko'i a me ke kūkulu 'ana i ia ma kahi mamao mai nā wahi nāwaliwali.

He pono ho'i ka pili pa'a 'ana o ke kaiaulu. 'O nā mea e emi ai ia pilina: ke kākī pipi'i no ka nohona; ka lilo o nā loa'a i nā 'ōpiopio; ka pipi'i loa o ka hale e ha'alele ai nā kama'āina; ka loa'a 'ole o nā wahi 'ohi pono; a me ke kūkulu laulā 'ana e nāwaliwali ai nā kikowaena kaona. Mana'o ka Papahana Laulā i ia mau mea ma o nā kulekele a me nā hana e ho'oponopono ana i nā kaona me ka paipai 'ana i nā hale kū'ai emi.

'O ka hope, he pono ka ho'okele waiwai kūpono no ia pa'a 'ana. E uku 'ia nā limahana i ka uku e pono ai ka nohona a e 'ae 'ia nā kūlana holomua. 'O ke kauka'i 'ana o Kaua'i i ka 'oihana ho'okipa malihini - mai ka nui o nā 'oihana e kākō'o ana i ka ho'olilo 'ana o nā malihini a i ka pākeneka o ke kālā loa'a mai nā hōkele a me nā hana o laila - ka mea e pilikia ai ia 'ano pa'a 'ana. Kākō'o nā kulekele a me nā hana o ka Papahana Laulā i ka hō'ano hou 'ana ma kahi o ka ho'onui 'ana i ka 'oihana ho'okipa malihini, e ho'oikaika ana i ka māhele mahi'ai a me ka ho'olaulā 'ana i ka ho'okele waiwai.

Nā Leo o ka Lehulehu

"E ho'ohana 'ia nā kaiahome mahikō ma ke 'ano he kumu ho'ohālike no ka palekana, ke olakino, a me ka pono i ho'olako 'ia no ke kaiaulu:

- *Pa'a a ho'olohe 'ia nā kānāwai*
- *Pa'a nā hale kauka no nā kamali'i*
- *Lako nā hale li'ili'i a hale kūkulu wale paha*
- *Ho'ohana 'ia nā lua lawe 'ia a lawe 'ia ka wai e nā kama'āina a i 'ole ki'i 'ia ka wai ua*
- *Ho'ohana 'ia nā mikini ho'omehana wai inā ho'olako 'ia e ke kālana. E ki'i ka ikehu lā inā 'a'ohē mikini."*

"E ho'onui i ke ko'iko'i o ka mauō kanaka, a me ia mea he aloha - ka mālama 'ana iā kākou iho, kekahi i kekahi, a me ka 'āina no nā hanauna e hiki mai ana!"



Ka mea lanakila o ka ho'okūkū pāheona 'o Kaua'i Kākou: Zixin He no ke Kula Ha'aha'a o Kapa'a.

PAHUHOPU #4: HE WAHI KAULIKE NO NĀ KĀNAKA A PAU

Mana’o mākou e kaulike nā kaiaulu me nā waiwai nui, ka lako i nā ‘oihana a me nā hale, a me ka nohona maika’i.



He pono ka lako mau no nā kānaka a pau no ka nohona maika’i loa, me ka lako i nā hale, nā ‘oihana, a me nā hana e maika’i ai ke alakau. ‘O ka pilikia nui paha ‘o ko Kaua’i pipi’i loa, i kapa ‘ia ho’i “ke kākī o ka Paridaiso.” He mana’o lu’ulu’u, ua ha’alele ko Kaua’i mau ‘ohana kama’āina ma muli o ka pipi’i loa o ka noho ‘ana ma ‘ane’i, a he mea ia e ilihune mau ai nā ‘ohana he nui.

‘A’ole emi ka nui o nā hale e kū nei no ka po’e hana ma’a mau. Ma muli o ia, mana’o ‘ia he mea ke kūkulu mau e kaulike ‘ole ai ka po’e a e kāko’o wale ana i ka po’e no waho mai. Ke pāku’i ‘ia ke kākī no ke alakau a me ka uila, ho’olilo ka ‘ohana ma’a mau ma kahi o ka 60% o ka uku makahiki no ka hale a me ke alakau.

Hiki i kekahi mau kama’āina ke ho’olilo i ke kālā e pono ai ma o ka mahi’ai ‘ana ma ko lākou ‘āina pono’i, ka uhai holoholona, a me ka lawelawe ‘ana i mau ‘oihana. Ho’olilo kekahi mau kānaka i nā lumi ho’okipa a me nā hale ka’a i mau lumi moe e ho’olimalima aku ai i nā malihini a me nā ‘ohana mai waho mai. Ke nui a’e nei nō na’e ka heluna o nā kānaka ilihune me nā ‘ohana ilihune ma Kaua’i nei, a he nui hou aku e ‘ane ilihune nei. ‘O nā mea hiki ‘ole ke ki’i i ke kālā e pono ai, lilo ana nō lākou ‘o lākou nā ilihune hana, e mau ana i ke “ola iki” - a i ‘ole ho’i, ha’alele lākou iā Kaua’i e ‘imi hana ai.

No ka ho’ololi ‘ana i ia holo pilikia mau ‘ana, he pono ka ho’olako ‘ana i ko Kaua’i kama’āina, me ka mana’o ‘ole ‘ana ho’i i nā mea e like me kahi e noho ai, ka makahiki, ka lāhui, ke keka, a me ka waiwai a waiwai ‘ole, i nā hale kūpono, ka ‘oihana e pono ai, nā kōkua e pono ai, nā ‘ano alakau like ‘ole, a me nā hana le’ale’a me nā wahi e le’ale’a ai. He pono ho’i ka ho’olālā a me nā mana’o ho’oholo no ka ‘āina e ho’opilikia ‘ole ana i nā mea pilikia ‘ē. He pono ho’i ka paipai ‘ana i ka ho’omaika’i ‘ana i kaiahome laulā a uku ‘oko’a ‘ia. He mea pono nō ho’i ka ho’olako ‘ana i nā hale no nā ‘oihana ma nā wahi e ho’oponopono ‘ia nei a me nā wahi e kūkulu ‘ia ana. He pono ho’i

ka ho’olako ‘ana i nā mea kōkua ma nā kaiaulu kua’āina no ka mau ‘ana o ko ka po’e ‘ano noho ‘ana me nā pono.

Aia nā kulekele i loko o ka Papahana Laulā e kōkua ai i ka pono o ko Kaua’i po’e mai nā keiki a nā kūpuna. He pono ana ka no’ono’o makakū, ke alu pū, a me ka laulima ‘ana e kō ai kēia mana’o me ka mana’o Kaua’i Kākou.

Nā Leo o ka Lehulehu

“I kō’u mana’o, kau nui ka mana’o o ka hapa nui o ko Kaua’i mau kama’āina papa i nā pilikia no nā lako a me nā ālaina no nā keiki, nā pilikia ‘ōnaepuni, nā lako hale no ka po’e ilihune, nā kākī pipi’i, a pēlā wale aku. ‘O kekahi mana’o, ke ola mau.

Inā ‘o ka hale āu e kū’ai kūpono ai, he ke’ena hale ma Princeville, a hana ‘oe ma Lihu’e - pilikia ‘oe i ka ho’olilo ‘ana he ‘ehā hola ma ke ala i ka pa’a alanui. ‘O ka mea e pa’a pilikia ai kākou i nā ka’a, ‘o ia ke ‘ano o ka ho’olālā kaiaulu, ‘a’ole ‘o ka ‘ēko’a.”



Kekahi o nā ki’i mai ka ho’okūkū pāheona Kaua’i Kākou: na Aljhay Flores no ke Kula Ha’aha’a ‘o King Kaumuali’i.

1.4 NĀ KULEKELE HO'OKELE HOLO MUA

He 19 kulekele no nā mana'o ko'iko'i i ko Kaua'i kama'āina no nā pilikia e kū nei a me ka holomua 'ana. Ho'okele kēia mau kulekele i nā pahuhopu hāiki a me nā hanana, a hō'ike nō ho'i i ka Palapala 'Āina O Ka Wā E Hiki Mai Ana.

 <p>1 Ho'oponopono Holo Mua a Mālama i ke 'Ano Kua'āina</p>	 <p>2 Ho'olako Hale Kūloko</p>	 <p>3 'Ike i ke 'Ano Pono'i o nā Kaona me nā Moku'āina</p>	 <p>4 Haku Kaiāhome Kā'oko'a a Hā'ehuola</p>	
 <p>5 Ho'opukapuka ma nā 'Ōnaepuni Kūpono</p>	 <p>6 Ho'ēmi i nā Kāki Nohona</p>	 <p>7 Kūkulu i mau 'Ano 'Ōnaehana</p>	 <p>8 Ho'omalu i ka Nani o ka 'Āina</p>	
 <p>9 Mālama i ko Kaua'i 'Ano, he 'Āina Ho'okipa Malihini</p>	 <p>10 Kōkua i ka Holomua o nā 'Ōihana</p>	 <p>11 Kōkua i ka Mōhala o nā 'Āina Mahi</p>	 <p>12 Ho'omalu i nā Kumu Wai</p>	
 <p>13 Ho'okō i ka Ikehu Ma'ema'e</p>	 <p>14 Ho'omākaukau no ke Aniau Loli</p>	 <p>15 Mālama i nā Kuleana Hawai'i a me nā Wahi Pana</p>	 <p>16 Mālama i nā Ala i nā Wahi Pana</p>	
 <p>17 Mālama i nā Keiki</p>		 <p>18 Mālama i nā Kūpuna</p>		 <p>19 Aloha aku, aloha mai</p>

NĀ KULEKELE HO'OLĀLĀ LAULĀ

Ho'ākāka nā kulekele 19 i ke ala holo mua o ke Kalana e kō nā nu'ukia a me nā pahuhopu o ka lehulehu i ka mauō, ke 'ano kū'oko'a, ke kūpa'a, a me ka pono kaulike. Kōkua aku nā kulekele ma nā pilikia ko'iko'i a me nā ala 'ike 'ia ma o ka hana kaiāulu. 'A'ole na'e i helu 'ia ma ke ko'iko'i, 'oiai ua like. 'O ka mana'o nui ia o kekahi anamana'o o ke kaiāulu i hana 'ia e 1,000 a 'oi kama'āina ma Kaua'i a puni. A akāka 'ia ho'i ka lōkahi laulaha o ka mana'o i ka mana'o o ke kulekele. E nānā i ka Paku'ina B no ka mana'o i ha'i poko 'ia.

Helu pākahi 'ia ka 'ōlelo kulekele me ke po'omana'o a me ke ki'i. E nānā i ka Mokuna 3 no nā ki'i e hō'ike ana i ka mau o ke kulekele.



KULEKELE #1: HO'OPONOPONO HOLO MUA A MĀLAMA I KE 'ANO KUA'ĀINA

E mālama i ko Kaua'i 'ano kua'āina ma o ke kaupalena 'ana i ka 'āina kūkulu 'ia ma ke 'ano e pono ai kēia mua aku. Hō'ole i ke kūkulu 'ana i ka 'āina pili 'ole i nā kaona. E hō'oa i ka ho'omōhalahala i loko o nā palena a pili a 'olu'olu i ka hele 'ia.

'O ke 'ano kua'āina o Kaua'i, pēlā 'o ia e kū'oko'a ai a e nani ai ho'i i nā kama'āina a me nā malihini. Pilikia na'e ia 'ano ona i ke kūkulu 'ana ma nā 'āina mahi e pili 'ole ana i nā kaona e kū nei. He alanui pa'apū nō ho'i kekahi hopena – he pilikia hou aku ia no ia 'ano kua'āina o Kaua'i. No ka mōhala mau o ka lehulehu, na kākou e ho'oponopono i ka ho'omōhalahala 'ana ma ke 'ano e pono ai ia 'ano kua'āina. Ma o ke kau palena 'ana i nā wahi kūkulu a kokoke i nā kaona e kū nei, ho'onohonoho kākou i kahi o nā 'āina kūkulu i mea e mau ai nā 'āina mahi. Emi mai ka lilo i ka 'ōnaepuni i ke kūkulu 'ana i loko o nā kaona e kū nei, a he kōkua ia i nā i ka mau o ke ka'awale ma waena o nā kaona. Ma ka pili hou aku i ia mau mea me nā ho'oponopono i nā ala holo, ho'emi ka ho'omāhuahua pili pono i ka pa'a alanui ma o ka ho'emi 'ana i ka pono o ka holo loa i loko o nā ka'au kaukahi, ka ho'onui 'ana ho'i i ka holo wāwae a holo paikikala ho'i i loko o nā kaona, a me ka ho'omaika'i 'ana i ka pa'a o nā ka'au 'ōhua.

Ho'opa'a 'ia kēia kulekele ma 'ō a ma 'ane'i ma o ka palapala 'āina ma ka Mokuna 5 (Palena 'Āina Kiwikā a me ka nui o nā 'āina kiwikā hou ma nā moku 'āina) a ma o nā hana no ka Ho'olako Hale, Ka Mālama 'Āina, a me ka Ho'okele Waiwai.



KULEKELE #2: HO'OLAKO I NĀ HALE KUMU KŪ'AI KŪPONO I LOKO O KA HO'ONOHONOHO 'ANA I NĀ KAIĀHALE KŪKULU-PILI-PONO NO NĀ 'OHANA KAMAĀINA

Ma ka 'ike 'ana i ke ko'iko'i loa, he pono i ke Kalana ka ho'olālā 'ana me ke kōkua 'ana i ke kūkulu 'ana ma kahi o 9,000 wahi noho ma mua o ka makahiki 2035. Me ka mana'o 'ana mai nō ho'i i kēia mau mea: (1) he kāmāwai kūkulu hale kūpono a holo mua; (2) nā kumu kāmāwai lawa pono; (3) nā hui kanaka ho'oholo mua; (4) nā ala kulekele mōākāka e ho'olako ana i nā hale kumu kū'ai kūpono a hale mālama ikehu ma o ke kūkulu 'ia 'ana a me kahi e noho ai; (5) he ka'akālai no ka ho'olako 'ana i nā pono hale kūpono no nā hale kumu kū'ai kūpono; (6) he mana'o "ho'olako hale" e pau ai ka noho 'ilihune hale 'ole; a me (7) he papahana holomua, me ke ka'akālai kō wikiwiki no ka ho'olako 'ana he 2,000 hale kumu kū'ai kūpono i loko o nā makahiki mua he 'elima.

'O ke kumu kū'ai ma'a mau o ka hale noho 'ia e ka 'ohana ho'okahi ma Kaua'i, ma 'ō aku ia o ka \$700,000.¹ 'A'ole hiki i ka hapa nui o ka po'e ke uku i ia 'ano kumu kū'ai, keu aku no nā 'ohana uku li'ili'i 'ia, nā 'āo'o, a me ka po'e noho 'ilihune hale 'ole. 'O ka pākeu hale e kū nei, ma kahi o ka 1,400 hale ia,² a e mana'o 'ia, e pi'i ana ka nele a ma kahi o ka 9,000 hale i ka makahiki 2035.³ 'O nā 'ohana e uku 'ia ana he 120% a emi mai paha o ka uku kūwaena, he 80% a 'oi lākou o ka

1 Kaua'i Board of REALTORS®, 2015
2 Kaua'i Rental Housing Study, 2014
3 Socioeconomic Analysis & Forecasts

nele ma Kaua'i. 'O ka po'e e nele nui loa ana, 'o ia nā 'ohana e uku 'ia ana he 50% a emi mai paha o ia uku kūwaena.⁴ 'O ka uku kūwaena no ka 'ohana he 4 kāmaka, he \$79,200 i kēia manawa.⁵

'O ke kumu kū'ai awelike e kūkulu ai i hale ma'a mau, he \$450,000 i kēia manawa.⁶ 'Oiai ma o ke kūkulu pilikino a laulaha paha, he pono ke kākō'o kālā 'ia ke kūkulu hale 'ana ma kahi o \$200,000. Ma ia 'ano kākō'o, he kumu waiwai \$1.62 biliona ka mea e pono ai ke kūkulu hale pilikino a laulaha paha i loko o nā 20 makahiki e hiki mai ana no ke kūkulu 'ana he 8,100 hale kumu kū'ai kūpono (80% o ia 9,000, he pono ma mua o ka makahiki 2035). Ma waho o ka 'imi waiwai 'ana a me ka 'imi 'ana i nā mea kākō'o i ka 'imi 'ana, he pono ka ho'emi 'ana i ke kumu kū'ai hale ma o ke 'ano o ka hale i ho'olālā 'ia, a me nā mana'o holo mua 'ē a'e e like me ka hale li'ili'i a me ka ho'emi 'ana i ka mo'omeheu kūkulu.

'O ka hana ma'a mau i kēia mau lā, 'o ia ka mana'o pū 'ana i ke kākō'o holo o kekahi hale a me ke kākō'o o ka hale. Inā he emi paha ka hale, a inā na'e he mamao aku mai kahi e hana ai, e pono ana na'e ho'i ka holo mamao (me ka pipi'i ho'i o ka holo), a laila, 'a'ole ia he kōkua i nā 'ohana, a he keu aku ho'i ka pilikia o ka pa'a alanui. E kōkua ana ka 'imi hale kumu kū'ai kūpono e kokoke ana i nā wahi 'oihana i nā 'ohana ma ka mālama 'ana i ko lākou mau kākō'o noho, me ka ho'emi pū 'ana ho'i i ka pa'a alanui.

Keu aku ho'i nā pilikia o ka loa'a hale 'ana i ka 44% o kāmaka e pilikia 'ē ana i ke kākō'o nui. 'O ka mana'o ho'i o ia, he 'oi aku ke kākō'o i ka loa'a o nā 'ohana ma kahi o 30%.⁷ He mau mea hou aku na'e e ho'onui ana i ka nele nui o nā hale: ka māhua 'ulolohi 'ana, ka pale ma'a mau 'ana, ka pono nui loa no nā hale ma nā mokupuni 'ē a'e, nā hale ho'olimalima, nā hale ho'onui kālā, nā wahi ka pi'i o ke kākō'o i ke kūkulu 'ana i hale, ka nele o ka 'ōnaepuni.

'A'ole nō he ho'okahi wale nō hana e kō ai nā mana'o a pau; akā, he pono ho'i he mau mana'o kōkua nui e ho'oholo 'ia me ka wikiwiki. He mana'o ko'iko'i ia 'o ka hale kumu kū'ai emi e ho'omohala ana i ke 'ano o ka nohona ma Kaua'i i nā makahiki he 20 e hiki mai ana. 'A'ole ana e mau ko Kaua'i 'ano pono'i, inā, he pono nā kama'āina e ha'alele aku. Inā 'a'ole ho'oponopono 'ia ia mea ko'iko'i, e nui loa ana ka pilikia, me nā hopena maika'i 'ole o nā kumu waiwai a me ke 'ano launa kanaka o ke Kālana o Kaua'i. Inā he mea nui i ke Kālana ka ho'okō 'ana i kēia mau nu'ukia 'o ke kaiāulu kaulike me ka pono no nā mea a pau, he mea nui ka loa'a 'ana i ke Kālana i ke ala e kōkua ai i kēia pono kumu.

Ho'opa'a 'ia kēia kulekele ma 'ō a ma 'ane'i ma o ka palapala 'āina a ma o nā hana no ka Ho'olako Hale, Ka Holo 'Ōhua, Ka Papa Ola Manawa Kūpono, a me Ka 'Ōnaepuni me ke Kōkua.

4 Hawai'i Housing Planning Study, 2016
5 County of Kaua'i 2017 Annual Income Limits
6 09/13/2016 and 09/20/2016 Minutes of the Kaua'i County Council Affordable Housing Advisory Committee (authorized by Resolution No. 2013-57, Draft 1 on 06/12/2013, amended by Resolution No. 2014-34 on 05/28/2014)
7 ACS Housing Snapshot, 2014



KULEKELE #3: E 'IKE 'IA KE 'ANO PONO'Ī O KO KAUA'I MAU KŪLANAKAUHALE PĀKAHI A ME NĀ MOKU 'ĀINA

He mau 'ano ko kēia me kēia kūlanakauhale a me nā moku 'āina o Kaua'i, me ko lākou mau hi'ohi'ona pono'ī, nā lako pono'ī, a me nā nele pono'ī. E ho'omaika'i 'ia lā kēia mau 'ano pili pono, e ho'omalua 'ia ho'i ma nā Ho'olālā Ho'omohala Kaiāulu, a keu aku ma nā kūlana ho'omāhua.

'O kekahi mana'o nui e kūpina'i ana i ka waha o ka lehulehu, 'o ia ho'i ka mahalo i ke ka'awale o nā kaona i nā 'āina waiho ākea. Mālama kēia 'ano i ke 'ano kua'āina i mahalo nui 'ia e nā kama'āina a me nā malihini pū. Hō'ike pū mai nā kānaka i ko lākou mau mana'o no ke 'ano kū 'oko'a o nā kaona: e la'a ho'i me ka 'oko'a loa o Kōloa, 'oko'a pū 'o Hanalei, a 'oko'a ho'i 'o Waimea, 'oko'a nō ho'i 'o Kapa'a. 'O kēia 'ano ho'olālā 'ana i ka māhuahua a me nā kaiāulu hou, he mea ia e mālama mau ana i nā kaona me nā moku 'āina, a he mea ho'i ia e mālama ana i ke 'ano ka'awale o nā kaona.

Ho'opa'a 'ia kēia kulekele ma 'ō a ma 'ane'i ma o ka palapala 'āina a ma o nā hana no ka Mālama Ikehu a me ka Ho'emi Anilā Loli, Ka Holo 'Ōhua, a me kēia me kēia moku ho'olālā 'ia.



KULEKELE #4: HAKU KAIĀHOME KĀ'OKO'A A HĀ'EHUOLA

E hō'okia i ka lako maoli o nā kaiāhome hou a me nā kaiāhome e kū nei i nā alaholo kūpono a me nā pāka maika'i, a e hō'okia pū i ka hiki ke lawelawe 'oihana, ke kālepa, ke holo 'ōhua, a ke kākō'o lehulehu.

Ma 'Amelika a puni, a ma Hawai'i ho'i, he ko'iko'i nā ma'i pūhalahū a me ka ma'i mimi kō: pi'i a'ela ho'i ia no nā māku a me nā keiki. Inā 'a'ole e 'oki aku i ia pi'ina, 'o ka maka mua ana kēia ma 'Amelika Hui Pū 'Ia, 'o ke ola o ke keiki, e emi ana kona lō'ihi i kona mau māku. Kuhi 'ia ke kumu o ia pi'ina o nā ma'i, 'o ia ho'i nō paha ka pi'i 'ana o ka ma'a mau o ka nohona noho wale. Hō'okia 'ia ka pilina o ke olakino a me ke 'ano o ke kaiāhome e nā papa ho'olālā i hana 'ia iho nei. 'O ka ho'olālā 'ana i nā kaiāhome i hiki ke holo wāwaem holo paikikala, a holo ka'a 'ōhua paha me ka palekana a me ka 'olu'olu, he mea ia e pi'i ai ka ho'oikaika kino ma'a mau 'ana o nā kama'āina, a he ho'emi ia i nā pilikia olakino. 'O ia 'ano ho'olālā ho'i, he paipai ho'i ia i ka ho'ona'auao, nā 'oihana, a me nā kōkua e pono ai ka po'e hiki 'ole ke kalaiwa, a he ho'emi ho'i ia i ke kākī no ka 'ohana holo ka'a 'ōhua. Ke ho'okūkū 'ia nā kaiāhome pili a holo wāwae maika'i 'ia i ke kaiāhome i kūkulu 'ia ma 'ō a ma 'ane'i, he ho'emi ka mua i ka ho'onui 'ana i nā kākī a me nā hana ho'oponopono, a he mālama ho'i i nā ala a me nā mea kūlohelohe ma o ke emi o nā ea 'ino.

Ho'opa'a 'ia kēia kulekele ma nā hana no nā Hale, Ka Holo 'Ōhua, a me nā wahi i kā'ana 'ia.



KULEKELE #5: HO’OPUKAPUKA MA NĀ ‘ŌNAEPUNI

E kākō’o nā ho’opukapuka hou o ke aupuni i ka māhuahua ‘ana a me nā papahana ko’iko’i i kuhi ‘ia ma nā Papa Ho’olālā Kaiāulu.

Kaupalena nui ‘ia nā ‘ano kālā like ‘ole o ke aupuni (Kūloko, Moku‘āina, a me ka Pekelala). A e like ho’i me ka ‘ohana mo’okālā hāiki, e hana ke aupuni e like me kona mea e pono ai. Me ia mana’o ho’i, e ho’oholo aku i nā mana’o ko’iko’i no ka ho’olilo ‘ana i ke kālā me ka pono. ‘O nā mea ‘ōnaepuni, ma lalo ona nā pāka, ka wai, ka moka wai, ka moka pa’a, a me ka holo ‘ana. Me ka ‘ae ‘ana aku i ke kālā emi, e ho’oholo i ka ho’opukapuka i nā ‘ōnaepuni ma ke ‘ano e pono ai k māhuahua ‘ana o nā wahi e pono loa ai ia māhuahua ‘ana. ‘O ka ho’okele waiwai kekahi o nā mea ko’iko’i loa ma ka mālama ‘āina, no laila, he mea nui loa ka ho’opa’a ‘ia ‘ana aku o nā ho’opukapuka ‘ōnaepuni me ka mana’o pū ‘ana i ka nu’ukia.

‘Ike ‘ia ke kulekele i loko o ka Mokuna no ka Ho’ohana a Kahu ‘Ana o ka Papa Ho’olālā Nui, a me nā hana no kēlā me kēia moku ‘āina.



KULEKELE #6: HO’ĒMI I NĀ KĀKI NOHONA

Ho’ēmi i nā kāki hui ‘ia o ka hale a me ka holo ‘ana e ‘oi ana ho’i i ke 60% o ka uku makahiki ma’amau o ko Kaua’i. Kō ia ma o ka ho’opili ‘ana i nā hale me nā ‘oihana, a ma o ka ho’olako ‘ana i nā ‘ano hale like ‘ole me nā holo emi ‘ana.

Ma ke kākī o nā hale, ‘ai, a holo paha, mau nō ka pilikia o nā kaiāulu i ka “Price of Paradise.” I la’ana, wahi a ke Ke’ena Helu Kanaka (2014) Ana Mana’o o ke Kaiāulu ‘Amelika (ACS), pilikia ma kahi o ka 44% o nā hale i ke kālā, a ho’olilo ka hale ma’a mau ma Kaua’i he 36% o ko lākou uku makahiki ma ka hale, a he 26% ma ka holo ‘ana. Me ke kū ‘ana o ka uku ‘oihana, a me ka pi’i ‘ana ho’i o nā mea ma’a mau e pono ai, he pono ka ho’oponopono ‘ana i nā hana hale a hana holo ho’i e ho’opi’i ai i ke kau like a me ka loa’a o ia mau pono ma’a mau.

Ho’opa’a ‘ia kēia kulekele ma ‘ō a ma ‘ane’i ma o ka palapala ‘āina a ma o nā hana no ka Ho’olako Hale, Ka Holo ‘Ōhua, ka Ho’okele Waiwai, a me Ka Papa Ola Manawa Kūpono.



KULEKELE #7: KŪKULU I MAU 'ANO 'ŌNAEHANA LAWE 'ŌHUA

Ho'ēmi i ka pa'a pū'uo ma ka 'āina ma o ka ho'oponopono 'ōnaepuni 'ana a me ka ho'onui 'ana i nā 'ano holo like 'ole.

Hāpai nui 'ia ka pa'a pū'uo o nā kaiāulu e nā kama'āina, 'o ia kekahi o nā pilikia nui no ka holo 'ana. A hāpai pū 'ia ka hana hou 'ole 'ia 'ana o ka holo 'ana i ka holo mua 'ana o ke 'ano o ke kūkulu 'āina.

'Ike 'ia ma nā noi'ia ma mua, 'a'ole maika'i ka ho'ā'o 'ana e "kūkulu a pau" ka pa'a pū'uo ma o ka ho'onui alanui a me nā ala hou, a he hana 'ino ho'i ia i ke 'ano kua'āina o ia wahi. I la'ana, ua 'ike 'ia he mau papahana alanui no Kaua'i he \$3.1 biliona e ke Ke'ena Alakau o Hawai'i, akā, ua mana'o 'ia he \$630 miliona ka lako ma ka holo 'ana o ka manawa.⁸ 'O ia ho'i, he 20% o ke kālā e pono ai ka mea e mahu'i 'ia nei e loa'a. Ma ka Papa Ho'olālā Alakau Nui o ke Kālana, i pa'a ma ka makahiki 2013, hāpai 'ia he mana'o hā'ina no nā pono o nā mea a pau e holo ana, pau pū ho'i me nā ukana, nā ka'a, nā mea kau ka'a 'ōhua, nā mea holo paikikala, a me nā mea holo wāwae.

He pono ke kōkua o ke Kālana a me ka Moku'āina no ka ho'oholo 'ana i nā papahana ko'iko'i loa e kōkua nui ana i ka mālama pa'a alanui.

Ho'opa'a 'ia kēia kulekele ma ka Palapala 'Āina Alakau, a me nā Hana Alakau 'Āina, a me nā moku 'āina 'o Līhu'e a me Kaua'i Hema.



KULEKELE #8: HO'OMALU I KA NANI O KA 'ĀINA

Ho'omalulu i ka nani o ka 'āina ma o ka mālama 'ana i nā 'āina kūkulu 'ole 'ia ma waena o nā kaona.

'O ko Kaua'i 'ano, ma muli ho'i ia o nā 'āina waiho nani ana a me nā hō'ailona 'āina 'oko'a no nā kama'āina a me nā malihini. Mai uka ho'i a ke kai, 'o Wai'ale'ale, 'o Kawaikini, ke kai o Kē'e, a me ke awāwa kūhōhō o Waimea, he pono ka mālama 'ia 'ana o ia mau wahi i loko nō o ka māhuhua 'ana o kākā, ke kūkulu mau 'ana i ka 'āina, a me nā loli 'ē a'e. 'O kekahi mau hō'ailona 'āina ho'i, he kōkua ia e 'ike ai nā kākā i kahi o uka a o kai. Ma o ka mālama 'ana i ia mau mea o ka 'āina a me nā hō'ailona 'āina, e mau ana ke 'ano kiko'i o Kaua'i a me kona mau mo'olelo e Kaua'i ai 'o ia a i kēia mua aku.

Ho'opa'a 'ia kēia kulekele ma o ka Palapala 'Āina a me nā hana no nā Waiwai Ho'oilina.

8 Federal Aid Highways 2035 Transportation Plan for District of Kaua'i, 2014



KULEKELE #9: MĀLAMA I KO KAUA'I 'ANO, HE 'ĀINA HO'OKIPA MALIHINI

Mālama i ko Kaua'i 'ano ho'okipa malihini ma o ka ho'oponopono 'ana a me ke kau palena 'ana i ke kūkulu mau i nā hōkele, a pa'a wale nō kahi kūkulu hōkele i loko o nā 'āina i ho'oka'awale 'ia no ia hana. E ho'ēmi ho'i i ka meheu o nā malihini ma nā 'ōnaepuni a me nā kaiāulu.

'O ka nui 'ana a'e o ka heluna o nā kānaka kipa mai, he ho'onui ho'i ia i ka ho'okele waiwai. Eia na'e, me nā mea hou o kēia ho'okipa malihini 'ana (la'ana, nā hale ho'olimalima, ka noho pū 'ana), a me ka hiki 'ole ke hō'ole i ka holo mai ma muli o ka pono kumu kānāwai pekelala, he pono ke kūkulu hou 'ana ma ka 'oihana ho'okipa malihini ke mana'o i nā hopena pilikia ma nā 'ōnaepuni a me nā kaiāulu. Ma nā wahi e like me Hā'ena, Wainiha, a me Hanalei, ua loli nui ke 'ano o ko lākou nānā 'ana ma muli o ke 'ano hou o ka ho'okipa malihini 'ana e ho'opilikia ana i ka nohona o ia mau 'āina. 'O ka hopena ho'i ka nui 'ana a'e o ka pa'a alanui - he mea i hiki 'ole ke mālama maika'i 'ia. Me nā lako a pau o ke Kālana, e paipai a e ho'opa'a i kekahi mau hana e kau palena ana a e ho'ēmi ana i ka meheu o nā holo 'ana o ka malihini.

Ho'opa'a 'ia kēia kulekele ma ka Palapala 'Āina a me nā hana no ka Ho'okele Waiwai, ka Ho'olako Hale, a me nā Wahi Kā'ana 'Ia.



KULEKELE #10: KŌKUA I KA HOLOMUA O NĀ 'OIHANA

Ho'omāhua aku i nā wahi pili kālepa ma nā Kikowaena Kaona ma o ka ho'oponopono 'ana i nā 'ōnaepuni, nā wahi sivila, nā alanui, nā kūlana kā'e i ho'oponopono 'ia, a me nā ka'ina hana pa'a mau.

I mea e kaulike ai ka po'e a pau, he pono ka hana 'ana i mau 'oihana hou a me ka nui 'ana o nā waiwai. Ma mua ho'i, 'o ka 'oihana ho'okipa ka mea nui no ka ho'onui waiwai, a 'o ka hopena ka hana nui 'ia 'ana o nā wahi kua'āina a me nā 'āina kūkulu 'ole 'ia, ia mau mea ho'i e 'oko'a ai a e nani ai ho'i 'o Kaua'i. He pono ke kāko'o 'ana o nā ho'onui waiwai e hiki mai ana i nā kikowaena kaona e kū nei e lilo 'o lākou ho'i nā kikowaena kālepa e kāko'o ana i nā 'oihana li'ilili a me nā 'oihana ho'olako hale. E ho'oponopono mua i nā 'ōnaepuni, nā ho'opukapuka, a me nā kūkulu kaiāulu ma kahi o nā kikowaena kaona e kū nei a e ho'oma'alahi aku i nā hana e pono ai nā 'oihana hou.

Ho'opa'a 'ia kēia kulekele ma ka Palapala 'Āina a me nā hana no nā Wahi Kā'ana 'Ia, nā Waiwai Ho'oilina, a me ka Ho'okele Waiwai.



KULEKELE #11: KŌKUA I KA MŌHALA O NĀ 'ĀINA MAHI

Kāko'o i nā 'ano ho'okele waiwai like 'ole a me ka loa'a o nā mea'ai kūloko ma o ka ho'onui 'ana i ko lākou loa'a ma nā 'ano a pau o ka mahi 'āina 'ana. Mālama i nā 'āina mahi li'ili'i, paipai i ke kani nui 'ana, a e ho'opa'a maika'i i nā pilina pili laulā a pili pono me nā mahi'ai.

Hō'ike maila ka Hawai'i Baseline Agricultural Study⁹ i nā 'eka 'āina ma Kaua'i e mahi 'ia nei, he 21,494 'eka (mai loko mai o ka 136,908 'eka i loko o nā 'āina mahi o ka Moku'āina). Ma lalo o ka 1,000 'eka ka nui e mahi 'ia nei no ka mea 'ai, 'a'ole ia no ka mahi kope.

He mea nui ka lako o nā limahana e mahi ai no ka loa'a maika'i o nā mea i mahi 'ia, a he mea nui nō ho'i ka haku 'ana i nā mīkini e pono ai ka mahi 'ana i kēia au mahi hou. 'Oiai e 'oko'a ana nā mana'o o ka po'e no nā 'ano mahi'ai 'ana e 'ae ai, he mea ko'iko'i loa ka ho'onui 'ana i ka loa'a o ka mahi'ai 'ana no ka mea 'ai, nā kumu waiwai, a me ka mālama 'ana i nā waiwai no ka ho'okele waiwai 'ana, pau pū ho'i ia mau mea me ke 'ano pono'i o Kaua'i a me nā 'ike ku'una o laila.

Ho'opa'a 'ia kēia kulekele ma nā hana no ka Ho'okele Waiwai, a me Ka Papa Ola Manawa Kūpono.



KULEKELE #12: HO'OMALU I NĀ KUMU WAI

E hana me ka mana'o pū 'ana i ka nāwaliwali a me ka pilina o nā waonahela, ke kanu laulā, a me nā kumu wai. Ho'iho'i a mālama i nā kumu wai mai ka uka a ke kai.

I ola ho'i ka mokupuni 'o Kaua'i i ke ola o kona mau kānaka, a 'o ke kumu ho'i o ia ola 'ana ke ola maika'i o nā kumu wai o ka 'āina. Ke ho'omaoe nei ka po'e lehulehu i ke ola a kūnāhihi 'ana ho'i o nā kumu wai, 'oiai ua akāka ka nui 'ana a'e o nā haumia a me nā pākela hana 'ana ho'i. Ma nā hana kūkulu a pau ma ia hope aku, he pono ka 'ike 'ana i ka 'āina a me ke kai, he ola ia ma 'ō aku o ka mana'o o kānaka i loko o nā paia i kūkulu 'ia. He kōkua nā 'ano mālama 'āina ku'una, 'o ia ho'i ka 'ike i ka mālama wai a me ke kumu wai ma ke 'ano he kumuwaiwai no kēia mua aku, i ko kākou pilina i ka 'āina, a he mea loa'a wale ka hana pono ka ho'oholo 'ana i ka mea e pono ai nā kaona e nui a'e ana a me ka mālama 'ana i nā kumu wai. 'O nā mana'o mahu'i e kū nei, pa'a nā kumu wai o ka nui o ke aupuni ma lalo o ka kahi e pono ai ka mālama maika'i 'ana, a 'oiai 'a'ole ho'okonukonu ka wai ma ka 'āina ma kaua'i, ke nui a'e nei nā mana'o a me nā nīnau no ka loa'a o ka wai o ka 'āina a me ka wai ma lalo o ka 'āina i kēia mua aku. He pono ana ka hana hou 'ia 'ana o kēia ho'olālā 'ana no ka hō'ike 'ana i nā mana'o kuhi mua no ka loli aniau a me nā 'ike e loa'a mau ana no ka wai o ka 'āina a me kona ho'emi 'ana i ka holo kahawai, a me ke emi 'ana o ka wai o ka 'āina ma muli o ke emi o ka holo kahawai. 'O ka mālama 'ana i ka wai, ka hana hou 'ia 'ana o ka wai, a me ka ho'oponopono kahawai 'ana, he mau mea ko'iko'i ia i ka mālama maika'i 'ana i ka wai ma Kaua'i i kēia mua aku.

Ho'opa'a 'ia kēia kulekele ma 'ō a ma 'ane'i ma o ka palapala 'āina a ma o nā hana no nā Kumuwai.



KULEKELE #13: HO’OKŌ I KA IKEHU MA’EMA’E

Ho’emi i ke aniau loli a me nā kalepona puka wale ma 80% ma ka li’ili’i loa ma mua o ka makahiki 2050 ma o ka ho’emi nui ‘ana i ka ho’olilo ikehu a ma ho ka ho’ololi ‘ana i ke ‘ano o ka uila, ka holo ka’a, a me ka ‘ōnaehana ‘ōnaepuni i ka hana ‘ana i ka ikehu ma’ema’e.

‘O ka ne’epapa ‘ana o Kaua’i i ka ho’ohana ‘ana i ka ikehu ma’ema’e kekahi hana e noke ana i ka pahuhopu nui o ka mokupuni e kūpa’a ma ke ‘āno mālama ‘āina maika’i. Ma o ka ho’emi ‘ana i nā ea ho’omehana honua (GHG), e ho’emi pū ana au i ka pi’i ‘ana o ka mehana ma ka honua. I ka makahiki 2007, ua puka mai he 1.2 miliona kana mekalika o ke ea kalapona ‘okikene lua, a ‘o ka nui o ia mai ka ho’ā wāwahie mō’alihaku no ka uila, ka holo ka’a, a me ka holo mokulele.¹⁰ ‘Oiai he me’e ‘o Kaua’i ma ka Moku’āina no ka hana ‘ana i ka ikehu ma’ema’e (ma kahi o ka 40% o ka mea e pono ai ‘o Kaua’i), he nui hou aku nā hana i koe no ka ho’emi ‘ana i ke ea GHG mai ka mahele alakau.

‘Ike ‘ia ia kulekele ma nā hana no ka Mālama Ikehu & Ho’emi Aniau Loli a me ka Mālama Lehulehu a me ka Ho’omanawanui Pilikia.



KULEKELE #14: HO’OMĀKAUKAU NO KE ANIAU LOLI

Ho’omākaukau no nā hopena o ka waiwai o ka mokupuni, nā mea ‘ai, a me nā ‘ōnaepuni i ka loli aniau.

Ua ho’omo’opa’a ‘ia ke aniau loli a me nā hopena pi’i ‘ili kai (SLR) ma ke kūlana kūhonua, kūaupuni, a kūloko nō ho’i. ‘Oiai loli mau ka ‘ikepili, wahi a ke akeakamai ‘oi loa o kēia mokupuni, he pono ka ho’olālā ‘ana me he mea lā e pi’i ana ke kai he ‘ekolu kapua’i. ‘Oiai ‘o Kaua’i he mokupuni i noho nui ‘ia kona mau ‘āina pili kai, he mea nui ka ho’olālā ‘ana a me ka ho’omākaukau ‘ana no nā pilikia e hiki mai ana i nā ‘āina pili kai a me nā pilikia e kupu a’e ana no nā ‘oihana, nā hale, nā ala holo, ka wai mānalo, a me ke ola a palekana ho’i o nā mea a pau.

Ho’opa’a ‘ia kēia kulekele ma ka palapala ‘āina a me nā hana no ke Ola Lehulehu a me ka Ho’omanawanui Pilikia.

10 Hawaii Greenhouse Gas Inventory, 2007



KULEKELE #15: MĀLAMA I NĀ KULEANA HAWAI’I A ME NĀ WAHI PANA

Ho’omau i nā hanana Hawai’i ku’una a e ho’omalulu i nā kumuwaiwai o ka lehulehu me nā wahi pana ma nā ‘ano a pau o ka ho’olālā kūkulu hou.

He mau mālama ‘āina maika’i loa nā Hawai’i, a he hana pū ho’i ia me ka ‘āina e mau ai kona ‘ano nani, ka loa’a, a me ka mālama ‘ana kekahi i kekahi. ‘Oia mau nō ho’i ia mau ‘ano a hiki i kēia lā ma ka ‘ōlelo, nā mo’olelo, ka hula, a me nā ‘aha e mau nei no ka po’e Hawai’i. ‘O ka mālama ‘āina ‘ana, he mea pa’a ia i loko o ka ‘ōlelo a me ka mo’omeheu Hawai’i. I loko ho’i o nā mo’olelo a me nā mo’omeheu, aia nā pilikia a me nā hana e maika’i a’e ai ia mau pilikia o ka po’e kahiko, ia mau kōnaka i pūlama i ka ‘āina, ke kumu o nā mea a pau, ke olakino maika’i a me ka laulima ‘ana. ‘O nā kōnaka maoli o Kaua’i, ‘o lākou ke kahua pa’a o ke kaiāulu, a ‘o ko lākou ‘ike ku’una no ka mālama ‘āina, ka mālama kekahi i kekahi, a me ke ‘ano e ‘ohi’ohi pono ai i nā mea o ka ‘āina, a he pono ke a’o aku i kēia mau mea i nā hanauna e hiki mai ana. He mea ‘ike wale i nā kama’āina, kanaka maoli paha ‘a’ole paha, ‘o nā kōnaka o Kaua’i nā mea waiwai nui loa, a he pono ka hō’ihi ‘ana i ka ‘āina a me ona mau waiwai, a e mālama mau i ia mau mea no ka pono o nā hana mo’omeheu.

Ho’opa’a ‘ia kēia Kulekele ma ka palapala ‘āina no nā Kumuwaiwai Ho’oilina a me nā hana no nā Kumuwaiwai Ho’oilina.



KULEKELE #16: MĀLAMA I NĀ ALA I NĀ WAHI PANA

Ho’omau i ka ‘ae ‘ana i nā wahi pili kahakai a pili uka no ka hana ho’omana a me nā hana ku’una, ka lawai’a, ka ‘ohi lau, ka uhai holoholona, a me nā hana le’ale’a e like me ka pi’imauna a me ka he’enalu.

Aloha nui ka po’e i nā kahakai, nā kuahiwi, a me nā ‘āina o Kaua’i no nā hana le’ale’a, a me ka ho’oikaika ‘ana i ke kino, ka no’ono’o ‘ana, ka ‘uhane, a me ka pilina o nā ‘ohana a me nā ka ‘ike ku’una. A me ia mau mea ho’i, he mea ma’a mau ka hana ‘ana o nā ‘ohana i nā ‘ano hana like ‘ole no ka nohona – ka lawai’a, ka uhai holoholona, ka ‘ohi ‘ana i nā mea’ai, nā pono, a me nā lā’au – i mālama mau ‘ia no nā hanauna nui. Ma muli o ka kūkulu nui ‘ana ma uka a ma kai, a ma muli ho’i o nā pilikia i kupu a’e mai ka ‘eha ‘ana o nā malihini ma nā ‘āina i ‘ike ‘ē ‘ia e ko loko ua kapu, he mau mea ia e pilikia ai ka holo ‘ana i nā wahi pana o Kaua’i, ma muli o ka maka’u i ka ho’opi’i ‘ia. Ho’omau ka paipai ‘ana i ka hana pū, ka ho’ona’auao ‘ana i nā kama’āina a me nā malihini, ka ho’opa’a ‘ana i nā kōnāwai no ka mālama ‘ana i nā wahi e pono ai, a me ka ho’olako ‘ana i nā hō’ailona kuhi holo i nā wahi e pono ai i ka mālama maika’i ‘ana i nā kumu waiwai a me ke ‘ano Hawai’i o ka mālama ‘āina ‘ana.

‘Ike ‘ia kēia kulekele i ka palapala ‘āina o nā Kumuwaiwai Ho’oilina a ho’opa’a ‘ia ma nā hana no nā Wahi i Kā’ana ‘ia a me nā Kumuwaiwai Ho’oilina.



KULEKELE #17: MĀLAMA I NĀ KEIKI

Pūlama i nā 'ōpio, 'o lākou ka waiwai nui. Ho'olako iā lākou i nā wahi palekana, nā kula maika'i i lako pono, nā 'oihana pa'a maika'i, nā hale lako, a me nā alakau kūpono e loa'a ai ko lākou nohona maika'i ma Kaua'i.

He mau ka nui 'oi o ka hānau ma mua o ka make 'ana. Eia na'e, 'ike 'ia ka nui o nā 'ōpio e ha'alele ana iā Kaua'i ma ka 'ikepili pa'a. 'O ia ha'alele 'ana ho'i o nā 'ōpio, he kumu ia o ke 'ano o'o mau o ka lehulehu, a he kupu mai koe nō paha o nā pilikia ma ka ho'okele waiwai a me nā pilina kōnaka i ka wā e hiki mai ana. He pono ka paipai 'ana i ka ho'ona'auao maika'i, ka ho'olako hale, a me ka ho'onui i nā waiwai no ka paipai 'ana i nā 'ōpio e noho ma Kaua'i nei.

Ho'opa'a 'ia kēia kulekele ma na hana no ke Olakino me ke Kūpono, ka Ho'okele Waiwai, a me nā Wahi Kā'ana 'ia.



KULEKELE #18: MĀLAMA I NĀ KŪPUNA

Ho'omākaukau no ke o'o 'ana o ko Kaua'i me nā hale, nā hana kōkua, a me nā ho'oponopono 'ōnaepuni no ka pono o nā kūpuna a me ko lākou mau hale.

Ke o'o a'e nei nō ko Kaua'i po'e. E piha ana i ka hapakolu o ko Kaua'i po'e he 65 makahiki a 'oi ma ka makahiki 2035. Ma ka ho'okūkū 'ana me nā kālana 'ē a'e, aia ma Kaua'i ke kūwaena ki'eki'e a me ka pākeneka ki'eki'e no nā 'ao'o.

Ma Kaua'i nei, mālama maika'i 'ia nā kūpuna, ma muli o ka 'ike, 'o lākou ka kahua pa'a o nā 'ohana a me nā kaiāulu. Ma o ke kākō'o 'ana i nā wahi pūlama kūpuna, e o'o a'e ana lākou ma ko lākou wahi pono'i, a noho ho'i lākou me ka pono e like me ka lō'ihi e hiki. 'A'ole maika'i ka nui o nā kaiāhome no ka po'e e o'o ana ma muli o nā kōnawai no ka ho'okā'e'i 'ana, ua ka'awale nā kaiāhome a he holoka'a ke pono ai ka hele 'ana i nā wahi kālepa. Ma ka ho'omākaukau 'ana no nā mea o'o, he pono ka ho'olālā hou 'ana i ke 'ano o nā kaiāulu a e pāku'i aku i nā mea e pono ai nā kūpuna.

Ho'opa'a 'ia kēia kulekele ma na hana no ke Olakino me ke Kūpono, ka Ho'okele Waiwai, a me nā Wahi Kā'ana 'ia.



KULEKELE #19: ALOHA AKU, ALOHA MAI

E ho'olaha nui i nā 'ikepili like 'ole o ka ho'olālā 'ana no nā kūkulu hou 'ana me nā kama'āina e mana'o nui nei e kōkua ma ka ho'olālā a me ka ho'oholo mana'o 'ana. E paipai nui iā lākou e hāpai mana'o. E ho'oponopono i nā hanana no ka lehulehu, a e pane kūpono i 'ike ka po'e 'imi 'ike.

Ma o ka hō'ano hou 'ana i ke ka'ina hana, nīnau mai nā kama'āina a me nā ke'ena i ke 'ano o ka nānā 'ana i ka ho'opa'a 'ana i ka Papa Ho'olālā Nui o ka makahiki 2000 no ka 'ike 'ana i nā mea maika'i a me nā pilikia. 'Oiai ua nui nā mea maika'i, 'a'ole i ki'i 'ia nā mana'o o ka po'e, a 'o nā mana'o i ki'i 'ia, 'a'ole i hana 'ia me kekahi 'ano ma'a mau.

'O ka ho'okolo 'ana i nā hana e kāko'o ana i nā kulekele o ka pahuhopu, Pono ia ke ho'opa'a i ka'ina hana maika'i i hiki ke loli mau me ka loli 'ana o ka manawa. He mea nui ka ho'opa'a maika'i 'ana i nā ana hana, nā ana holomua, ka ho'oikaika 'ana i ke kuleana, a me ke ki'i 'ana i ka mana'o o ka po'e no ke kō o nā hana o Kaua'i.

Ho'opa'a 'ia kēia kulekele ma o ka Mokuna no ka Ho'opa'a a Ho'oponopono o ka Papa Ho'olālā Nui.



Hälāwai Nu'ukia Kaiāulu o Kaua'i Hikina ma Kapa'a

Mahalo ka mākia o ka Papa Ho'olālā Nui, "Kaua'i Kākou," i ko Kaua'i ikaika, aia ma nā kaiāulu ikaika a 'ō'ā a me ka maika'i o ka hana pū 'ana o ka po'e e ho'olako ai i nohona maika'i a'e i ka wā e hiki mai ana.