

CORPORATE DATA

CORPORATE OVERVIEW

(As of March 31, 2002)

Company Name:	KDDI CORPORATION
Date of Establishment:	June 1, 1984
Business Objective:	Type I Telecommunications business
Principal Office:	2-3-2, Nishishinjuku, Shinjuku-ku, Tokyo, Japan
Representative Director:	Tadashi Onodera (President)
Capital:	¥141,851 million
Total Employee:	13,575 (consolidated)

DIRECTORS, AUDITORS AND MANAGING OFFICERS

(As of June 26, 2002)

Directors

Chairman, Member of the Board, Representative Director

Jiro Ushio

Vice Chairman, Member of the Board, Representative Director

Yusai Okuyama

President, Member of the Board, Representative Director

Tadashi Onodera

Executive Vice Presidents, Members of the Board,
Representative Directors

Shinji Sakai

Mitsuo Igarashi

Masahiro Yamamoto

Member of the Board, Senior Executive Managing Officer

Yasuo Hirata

Members of the Board

Yasuo Nishiguchi

Hiroshi Okuda

Members of the Board, Senior Corporate Advisers

Tadashi Nishimoto

Masao Doi

Akira Hioki

Auditors

Standing Statutory Auditors

Masahiro Mino

Toshiaki Terui

Osamu Ando

Statutory Auditor

Atsushi Mori

Managing Officers

Senior Executive Managing Officer

Toshio Okihashi

Executive Managing Officers

Takeshi Okada

Tadashi Kashiwamura

Yoshinori Nakagaki

Nariyoshi Tanaka

Nobuhiko Nakano

Ryoichi Shimojima

Seiichiro Oshima

Shizuo Koyama

Masaru Takahashi

Satoshi Nagao

Kaoru Tachibana

Yasuhiko Ito

Managing Officers

Kazuyuki Tsukada

Hirofumi Morozumi

Nobuo Nezu

Hitomi Murakami

Akira Itoh

Tadashi Kitasako

Hajime Nomura

Osamu Tateno

Tomoyoshi Kaneko

Yuji Tsuda

Noriyuki Kandori

Hiroshi Kitagawa

Yuzo Ishikawa

Seikichi Sakakibara

Yutaka Shono

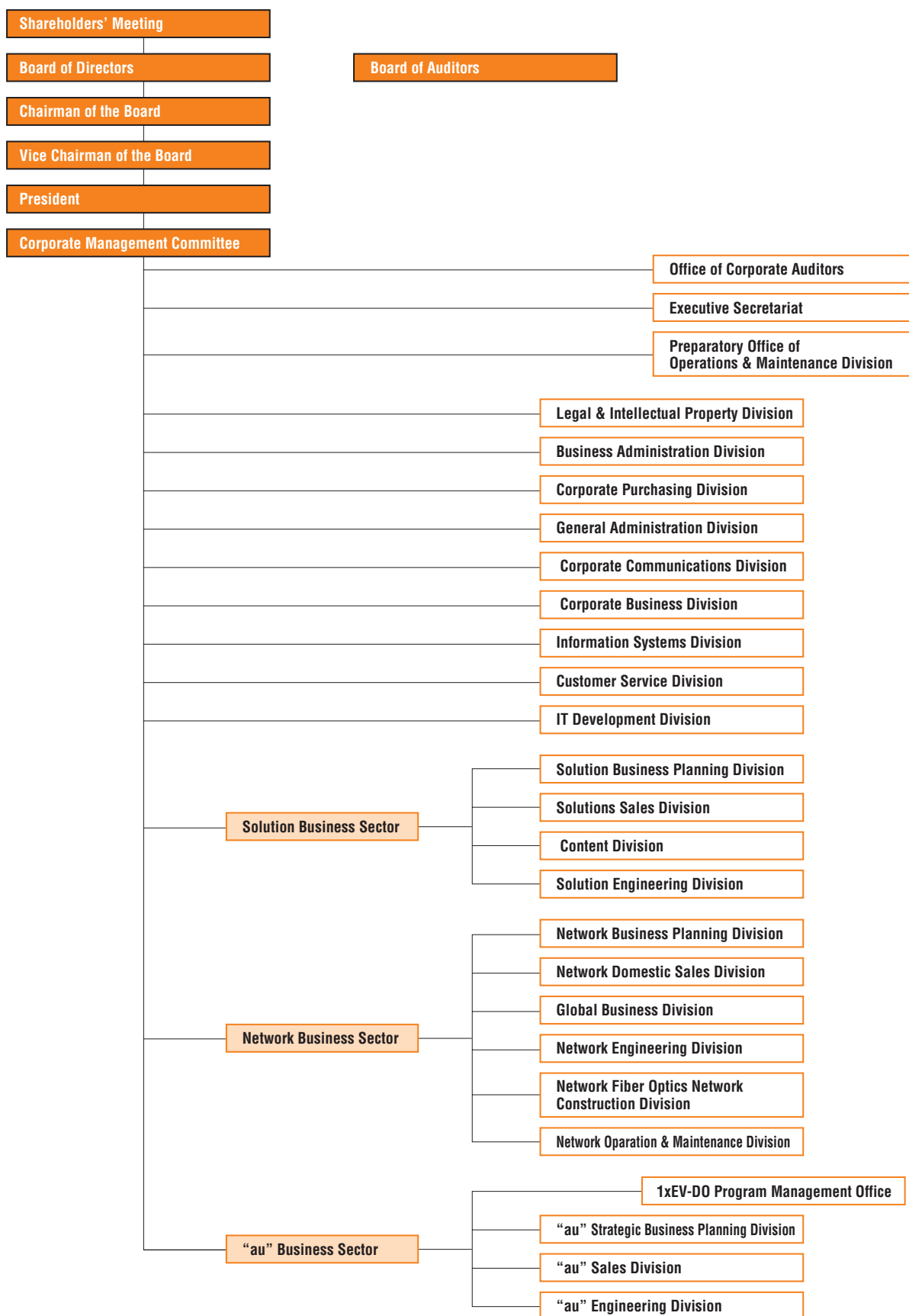
CORPORATE HISTORY

	DDI	IDO	KDD	TWJ	Telecommunications sector
1953			established		
1961			listed on the Second Section of the Tokyo Stock Exchange		
1964			joined in the INTELSAT the TPC-1 launched		
1970			listed on the First Section of the Tokyo Stock Exchange		
1973			International Direct Dialing service launched		
1976			the TPC-2 launched		
1977			joined in the INMARSAT		
1984	established			established	
1985					liberalization of the Telecommunication sector
1987	domestic telephone service launched		KDD R&D Laboratories started up in the Company	domestic telephone service launched	
1988	cellular companies established	established			
1989	analog cellular telephone service launched				
1990					
1991					
1992			the TPC-4 launched		
1993	listed on the Second Section of the Tokyo Stock Exchange				
1994	digital cellular telephone service "PDC" launched				liberalization of sales of cellular telephone
	PHS Company (DDI Pocket) established				
1995	PHS service launched				
	listed on the First Section of the Tokyo Stock Exchange				
1996			the TPC-5 launched		
1997	Internet service "DION" launched				
1998	digital cellular telephone service "cdmaOne" launched		Merger of KDD and TWJ		the KDD law abolished
1999	Acquisition of TU-KA Group		the JIH launched		
2000	Merger of DDI, KDD and IDO				
2001	au Corporation merged to KDDI				the MYLINE registration started
2002	the Third-Generation cellular telephone service "CDMA2000 1x" launched				

Notes 1) TPC : Trans Pacific Cable
 2) INTELSAT : International Telecommunications Satellite Organization
 3) INMARSAT : International Mobile Satellite Telecommunications Organization
 4) TWJ : Teleway Japan Corporation
 5) JIH : Japan Information Highway (the submarine fiber-optic cable that encircles the Japanese archipelago in a loop configuration.)

ORGANIZATION

(As of June 26, 2002)



MAJOR CONSOLIDATED SUBSIDIARIES

(As of March 31, 2002)

Mobile Communication Businesses

Domestic

Company Name	Date Established	Paid-in Capital (millions)	Voting Right Percentage	Business Field
OKINAWA CELLULAR TELEPHONE COMPANY	Jun.91	¥ 1,414	51.5%	CDMA and PDC cellular phone services under the 'au' brand
Tu-Ka Cellular Tokyo Inc.	Jul.91	¥ 6,000	55.7%	PDC cellular phone service
Tu-Ka Cellular Tokai Inc.	Feb.92	¥ 3,000	56.2%	PDC cellular phone service
Tu-Ka Phone Kansai Inc.	Oct.91	¥ 6,000	54.0%	PDC cellular phone service
DDI Pocket Inc.	Jul.94	¥75,251	80.8%	PHS service

Overseas

Company Name	Date Established	Paid-in Capital (millions)	Voting Right Percentage	Business Field
HOLA Paraguay S.A.	Sep.98	GS 90,726	68.7%	Cellular service in Paraguay

Network & Solutions-related Businesses

Domestic

Company Name	Date Established	Paid-in Capital (millions)	Voting Right Percentage	Business Field
KCOM Corporation	May.90	¥1,921	100.0%	Internet services, data transmission services, etc.
KMN Corporation	Jun.98	¥ 626	90.0%	Internet provider service through CATV

Overseas

Company Name	Date Established	Paid-in Capital (millions)	Voting Right Percentage	Business Field
KDDI AMERICA, INC.	Jul.89	US\$ 84	100.0%	Telecommunications services in the U.S.
KDDI EUROPE LTD.	Jul.89	£ 43	100.0%	Telecommunications services in Europe
KDDI FRANCE SAS.	Jan.89	EUR 4	100.0%	Telecommunications services in France
KDDI DEUTSCHLAND GMBH.	Sep.89	EUR 1	100.0%	Telecommunications services in Germany
KDDI HONGKONG LIMITED	Apr.98	HK\$ 101	100.0%	Telecommunications services in HongKong
KDDI SINGAPORE Pte. Ltd.	Apr.96	S\$ 2	100.0%	Telecommunications services in Singapore
KDDI AUSTRALIA PTY. LIMITED	Jun.87	A\$ 16	100.0%	Telecommunications services in Australia
KDDI do Brasil Ltda.	Mar.88	R\$ 4	50.1%	Internet provider and IT-related business in Brazil
TELEHOUSE INTERNATIONAL CORPORATION OF AMERICA LTD.	Jun.87	US\$ 45	55.9%	Secure IT housing, telecommunications facilities management in the U.S.
TELEHOUSE INTERNATIONAL CORPORATION OF EUROPE LTD.	Mar.88	£ 47	83.9%	Secure IT housing, telecommunications facilities management in Europe

Telecom Infrastructure Construction

Domestic

Company Name	Date Established	Paid-in Capital (millions)	Voting Right Percentage	Business Field
KDDI Submarine Cable Systems Inc.	May.92	¥5,686	69.2%	Consulting, integration, construction, and technological development of optical-fiber submarine cable
KOKUSAI CABLE SHIP CO., LTD.	Mar.66	¥135	100.0%	Construction and maintenance of submarine cables
Japan Telecommunication Engineering Service Co., Ltd.	Jun.99	¥470	54.5%	Construction and maintenance of optical fiber network along highway

Sales of IT Equipment and System

Domestic

Company Name	Date Established	Paid-in Capital (millions)	Voting Right Percentage	Business Field
K-Solutions Inc.	Jul.96	¥672	85.2%	Planning, development, equipment, and sales and support of communications infrastructure and systems
KDDI Technology Corporation	Aug.88	¥494	100.0%	Development and consulting of image data processing system
OSI Plus Corporation	Sep.87	¥490	100.0%	Designing, consulting and sales of OSI software
KDD Media Will Corporation	Aug.99	¥ 80	96.3%	Research, Development, Production and Sales of Digital Imaging products

Other Services

Domestic

Company Name	Date Established	Paid-in Capital (millions)	Voting Right Percentage	Business Field
KDDI R&D Laboratories, Inc.	Apr.98	¥2,238	91.7%	Research and development of new technologies and sales of products developed
KDDI Development Corporation	Apr.87	¥4,404	100.0%	Leasing of offices, store and homes, development, operations and administration of athletic facilities
KDDI Telemarketing Inc.	May.96	¥ 200	100.0%	Call center services
KDDI Msat, Inc.	Apr.77	¥ 300	100.0%	Consulting and sales of Inmarsat satellite communications services
KDDI TELESERVE Inc.	Sep.87	¥ 100	100.0%	Temporary staff placement, recruitment consultancy and language service
a1adnet corporation	Dec.00	¥ 490	51.0%	Planning, producing and distribution of advertisement on mobile Internet
KDDI SOGO SERVICE CO., LTD.	Apr.74	¥ 160	100.0%	Security services; operation and administration of buildings and peripheral facilities
KDDI Shoji Co., Ltd.	Aug.86	¥ 300	100.0%	Sales and leasing of office equipment, telecommunications facilities and sundries

STOCK INFORMATION

(As of March 31, 2002)

Total Number of Shares Authorized: 7,000,000

Total Number of Shares Issued and Outstanding: 4,240,880.38

Number of Shareholders: 167,611

Major Shareholders

Name of Corporate Entity	Number of Shares Held	Proportion of Capital
Kyocera Corporation	572,675.87	13.50%
Toyota Motor Corporation	497,425.23	11.72%
Japan Trustee Services Bank, Ltd. (Trust Account)	154,191.00	3.63%
The Mitsubishi Trust and Banking Corporation (Trust Account)	116,414.00	2.74%
UFJ Trust Bank Limited (Trust Account A)	114,870.00	2.70%
The Chase Manhattan Bank N.A. London	100,875.00	2.37%
Mizuho Trust & Banking Co., Ltd. (Trust Accounts Held by Sony Corporation: 003, 007 and 008)	94,622.00	2.23%
The Kansai Electric Power Co., Inc.	81,200.00	1.91%
Ministry of Posts and Telecommunications Mutual Aid Association	76,641.45	1.80%
Kyushu Electric Power Co., Inc.	69,662.78	1.64%

Distribution of Shares

	Number of Shareholders	Number of Shares Held	Percentage of Total Shares
Financial Institutions	270	1,337,948.55	31.55%
Securities Firms	56	26,157.33	0.62%
Foreign corporations, etc.	565	570,777.69	13.46%
Individuals and other	164,780	428,875.06	10.11%
Other corporations	1,940	1,877,121.75	44.26%