

# Kodak

## EasyShare 5500

All-in-One Printer



User's Guide

# Kodak

Eastman Kodak Company

Rochester, New York 14650

© Eastman Kodak Company, 2008

P/N 1K3247 February 2008

Kodak and EasyShare are trademarks of Eastman Kodak Company.

Windows is a registered trademark of Microsoft Corporation in the United States and other countries.

The Bluetooth word mark and logos are owned by the Bluetooth SIG, Inc. and any use of such marks is under license.

©1989-2007 I.R.I.S. (Image Recognition Integrated Systems), All Rights Reserved

# Table of contents

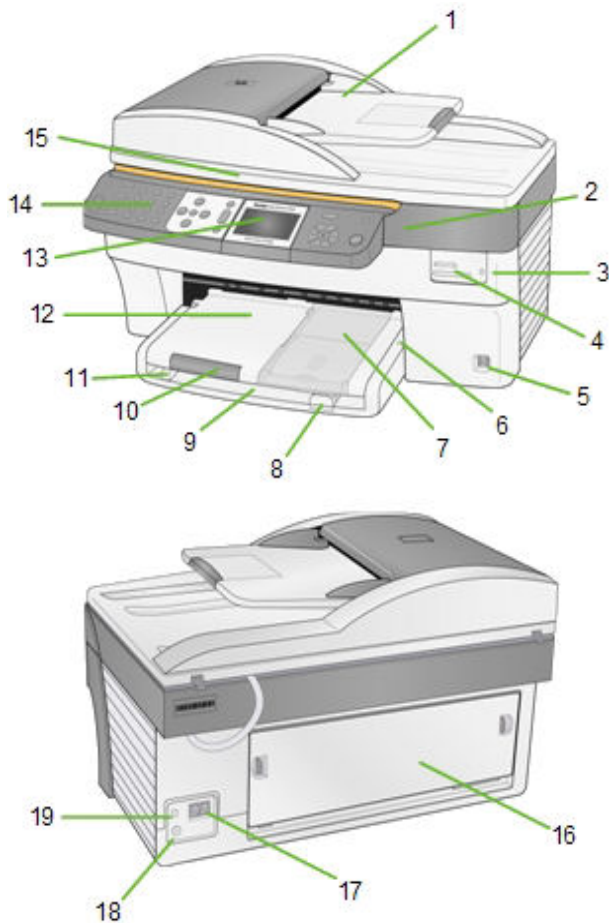
<b>Product overview</b> .....	<b>1</b>
Main components.....	1
Control Panel Layout.....	2
Status lights.....	3
LCD display screen.....	8
Memory card slots and USB port.....	9
Automatic document feeder.....	10
<b>Getting started</b> .....	<b>11</b>
Connect power.....	11
Install the printhead.....	11
Install ink cartridges.....	13
Install the duplexer.....	14
Start-up.....	15
Menus.....	15
Demo sheet.....	20
Transfer photos.....	20
Configuring settings.....	21
Fax connections.....	24
<b>Handling and loading paper</b> .....	<b>29</b>
The scanner glass.....	29
Load main tray.....	30
Load photo tray.....	31
Load envelopes.....	32
Load labels.....	33
<b>Print</b> .....	<b>35</b>
Print photos from a camera.....	36
Print photos from the control panel.....	36
Index print.....	37
Print photos from a proofsheets.....	37
Tagged photos (DPOF).....	38
Bluetooth printing.....	39
Print with computer.....	40
Layouts.....	40
Setting print options.....	53
Previewing photos.....	55
<b>Copy</b> .....	<b>59</b>
Copy with control panel.....	59

<b>Scan</b> .....	<b>67</b>
Scan with control panel .....	67
<b>Fax</b> .....	<b>73</b>
Fax functionality .....	73
Print fax cover page .....	73
Print fax activity report .....	73
Setting fax options .....	73
Sending a fax.....	79
Receiving a fax.....	81
<b>Maintenance</b> .....	<b>83</b>
General care.....	83
Clean the scanner glass.....	84
Clean the scanner lid.....	84
Format memory card.....	84
Print diagnostic sheet.....	85
Firmware upgrade .....	85
Ink cartridges.....	85
Printhead .....	88
<b>Support</b> .....	<b>93</b>
Contact Kodak.....	93
Limited warranty .....	93
Telephone customer support.....	95
Troubleshooting.....	96
<b>Appendix</b> .....	<b>107</b>
All-in-One specifications.....	107
Computer requirements .....	108
Paper types .....	108
Safety.....	110
Regulatory compliance .....	111
<b>Glossary</b> .....	<b>115</b>
<b>Index</b> .....	<b>117</b>

# 1 Product overview

The Kodak EasyShare 5500 All-in-One (AiO) Printer allows you to print, copy, scan and fax photos or documents. Many functions can be operated directly from the control panel. You can print, store, manage and share your digital photos with family members and friends with the Kodak EasyShare software. You can buy optional accessories to enhance your Kodak AiO printer experience.

## Main components



**1** Automatic document feeder

**2** Printer access door

**3** Memory card indicator

**4** Memory card slots

**5** USB port

**6** Photo tray light

**7** Photo tray

**8** Paper length guide

**9** Main tray

**10** Output tray extender

**11** Paper width guide

**12** Output tray

**13** LCD display

**14** Control panel

**15** Scanner lid

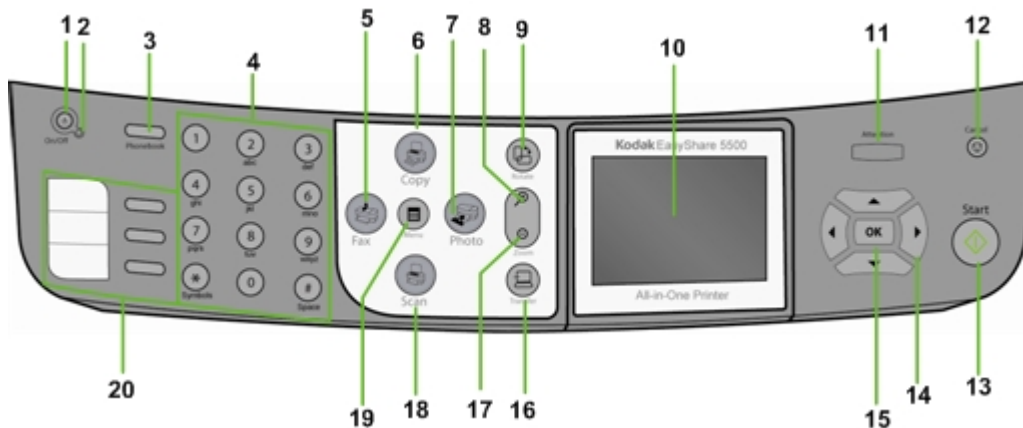
**16** Rear access door

**17** Phone line connectors

**18** Power connector

**19** USB port

## Control Panel Layout



Number	Name	Description
1	On\Off Button	Turns your AiO printer on or off.
2	On/Off Light	Green when Starting Up, Ready, or in Standby mode. Flashes red when in an error state. Is not lit when in Sleep mode.
3	Phonebook Button	When in fax mode, the list of stored phone numbers is displayed on the LCD.
4	Keypad	The keypad is used to dial phone numbers and entering alpha numeric characters.
5	Fax Button	Press to enter Fax mode. Lit when in Fax mode.
6	Copy Button	Press to enter Copy mode. Lit when Copy mode.
7	Photo Button	Press to display the Print menu and toggle between viewing photos and the Print menu.
8	Rotate Button	Rotates photo on the LCD display, clockwise, 90 degrees.
9	Zoom + Button	When in Photo Preview mode, magnifies the photo to 1.5X. Subsequent presses zoom in 0.5X increments to a maximum of 5X. When in Multiview, displays the current photo in preview mode.
10	LCD Display	Displays photos, messages, status, and menus.
11	Attention Light	On or flashing for an error or warning condition.
12	Cancel/Back Button	Moves the menu back one screen or cancels the current print job. Lit when Cancel or Setup in progress.
13	Start Button	Starts a copy, scan, print, or fax operation. Flashes when busy.
14	4-way Navigation Button	Used to navigate Up ▲, Down ▼, Left ◀, and Right ▶.
15	OK Button	Used for selection in conjunction with the 4-way controller.
16	Zoom - Button	When the AiO printer is in Photo Preview mode, pressing enters Multiview. When a photo has been magnified with the <b>Zoom +</b> button, pressing decreases the magnification in 0.5X increments.

Number	Name	Description
17	Transfer Button	Transfers photos from connected PTP camera or inserted memory card or USB flash drive. Lit when selected.
18	Scan Button	Press to enter Scan mode. Lit when Scan mode.
19	Menu Button	Displays the main menu screen.
20	Speed Dial Buttons and Displays	Pressing a speed dial button causes the AiO printer to enter fax mode, place the associated number into the display, and immediately begin scanning and sending a fax to the associated number if paper is loaded in the ADF or scanner glass.

## Status lights

The following tables contain information on the AiO printer lights.

All lights on control panel		
Light status	Cause	Action/Solution
All lights are off.	The printer is turned off.	Press the <b>On/Off</b> button to turn the printer on.
	The Printer does not have power applied.	Check the light on the power lead.
The <b>On/Off</b> light is flashing and the display has the following message: Kodak EasyShare system starting up (please wait) The five boxes at the bottom are flash walking left to right.	The printer is initialising.	None: Allow the printer to complete the initialisation process.

<b>Power light on power lead</b>		
<b>Light status</b>	<b>Cause</b>	<b>Action/Solution</b>
Power lead light is off.	The printer to power supply lead is not properly connected to the power supply.	Reseat the printer to power supply lead.
	The power supply to your wall outlet lead is not properly connected to your wall outlet.	Reseat the power supply to your wall outlet lead.
	You do not have the appropriate power available at your wall outlet.	Test your wall outlet by plugging a known working device into your wall outlet. Have your wall outlet checked by a qualified electrician.
	There may be an issue with the power supply.	Visit <a href="http://Kodak.com">Kodak.com</a> for additional troubleshooting steps or contact your local Kodak call centre.
Power lead light is on.	The power lead and power supply are properly connected and ready to supply power to the printer.	Ensure that the power lead is properly plugged into the back of the printer.



On/Off light		
Light status	Cause	Action/Solution
Light is off.	The printer is turned off.	Press the <b>On/Off</b> button to turn the printer on.
	The Printer does not have power applied.	Check the light on the power lead.
	The printer needs attention.	Check to see if the photo tray light is on. If the photo tray light is on for more than 20 seconds and the <b>On/Off</b> light does not come on, disconnect the power for 5 seconds and reconnect the power. If the photo tray light does not go out after 20 seconds and the <b>On/Off</b> light comes on, contact Kodak for assistance.
Light is a steady green.	The printer is properly powered up, on and ready.	None
Light is a flashing green.	The printer is busy.	None: Normal operation when performing a print, copy, scan, fax or other job requests.
	The printer is initialising.	None: Please wait and allow the printer to complete the initialisation process (about 30 seconds). If the flashing green persists, you may have an issue with the printer. Visit <a href="http://Kodak.com">Kodak.com</a> for additional troubleshooting steps or contact your local Kodak call centre.
Light is a flashing yellow.	The printer has detected an error condition.	Disconnect power for 5 seconds and reconnect power. If the condition persists, please check the LCD display for additional information. Contact Kodak service for assistance. Also check the status monitor on your computer for a message.
Light is a flashing red.	The printer has detected an error condition that needs your attention.	Check the LCD display or status monitor on your computer for a message.
Flashing a rotating pattern of red, yellow and green.	The printer has detected that a printhead is not installed.	Please install a printhead and ink cartridges.

Photo tray status light		
Light status	Cause	Action/Solution
Photo tray light is Off.	The photo tray is not engaged.	Push the photo tray in to engage it if you want to print 150 x 100 mm (6 x 4") pictures.
	The printer is not turned on.	Press the <b>On/Off</b> button to turn the printer on.
Photo tray light is On.	The photo tray is engaged.	Pull the photo tray out to disengage it if you do not want to print 150 x 100 mm (6 x 4") pictures.
	The printer is powering up.	None: Please wait and allow the printer to complete the initialisation process. If the flashing green persists, you may have an issue with the printer. Visit <a href="http://Kodak.com">Kodak.com</a> for additional troubleshooting steps or contact your local Kodak call centre.

<b>Attention light</b>		
<b>Light status</b>	<b>Cause</b>	<b>Action/Solution</b>
Light is off.	No error.	None
Light is blinking steadily.	Recoverable error.	<p>Paper jam while printing.  Main tray empty.  Photo tray empty.  Carrier stall during pick.  Media size mismatch.  Media type mismatch.  Paper jam during pick.  Carrier stall while printing.  Change colour ink cartridge.  Change black ink cartridge.  Colour ink cartridge not readable.  Black ink cartridge not readable.  Change both ink cartridges.  Printhead not calibrated.  Calibration sheet needs scanning.  Calibration sheet not detected.  Calibration sheet read error.  Back cover removed when idle.  Back cover removed while printing.  Unit opened when idle.  Unit opened during printing.  Too many picture sources.  Proofsheet not detected.  Proofsheet read error.</p>
Light is blinking rapidly.	Warning	<p>Colour ink cartridge inserted incorrectly.  Black ink cartridge inserted incorrectly.  Colour ink cartridge not installed.  Black ink cartridge not installed.  Ink cartridges not installed.  Printhead not installed.</p>
Light is on.	Non-recoverable error	<p>Media sensor failure.  Printhead failure.  Scanner failure.</p>

Card slot light		
Light status	Cause	Action/Solution
Light is off.	An SD/MMC card is not inserted or is improperly inserted in the card slot.	Remove and reinsert the SD/MMC card.
Light is on.	An SD/MMC card is properly inserted in the card slot.	None
Light blinks green.	Slow blink: The internal card reader is initialising or communicating with the printer.	None
	Fast blink: There is a card or communication error.	Remove the card and make sure the card is not "write" protected or damaged. Reinsert the card or replace with a new card if necessary.

## LCD display screen

The LCD screen displays photos, messages, instructions and menu parameters. Menu navigation is accomplished using the 4-way navigation buttons. The screen is hinged on the back edge and can be positioned from flat on the control panel surface to vertical.



Instructions displayed on photos appear for up to four seconds and then disappear, or disappear immediately after you start interacting with the screen. The instructions will return after fifteen seconds of inactivity.

When a second page of display text is present, it is indicated by the down arrow ▼ symbol, positioned in the lower right-hand corner of the menu area. When the second or subsequent page of text is in view, the presence of a previous page is indicated by the up arrow ▲ symbol in the top right-hand corner of the menu area.

Each time you press Navigate Down (▼), you advance the highlight down 1 row. When the last row is highlighted, pressing ▼ causes page 1 to be replaced with page 2. When page 2 appears, the highlight is on the top row. The up arrow ▲ symbol appears at the right-hand edge. If a third page of menu parameters is available, the down arrow ▼ symbol appears in the lower right-hand corner. Until the highlight is advanced, pressing Navigate Up (▲) returns you to the previous page. Holding down any of the 4-way Navigation buttons causes them to repeat (scroll).

## Default display settings

Default settings are provided for each option. If you make changes to the settings, the changes remain as long as you do not change modes. You can save the settings in each mode by navigating to **Save Settings** and pressing **OK**. You may reset options to the master defaults by going to the main menu and selecting **Reset All Settings**.

## Photos

The LCD screen displays JPG images when you insert a memory card, camera or USB device. However, the following images will not be displayed.

- File size greater than 8 MB
- Image size greater than 12 megapixels
- Image colour space is not sRGB or adobeRGB
- Progressive JPEG images

## Memory card slots and USB port

Your Kodak EasyShare All-in-One can access the memory cards used in most digital cameras. You can insert the memory card into the AiO printer or connect your camera directly through one of the two USB ports on the front panel, using a USB cable. Your Kodak AiO printer can read the contents of the memory card while it is still in the camera.



If your AiO printer beeps three times when you plug a device into the USB port, it means the device is not supported.

## Supported memory cards



Your Kodak AiO printer can read the following memory cards:

- xD-picture card
- Memory stick
- Memory stick PRO
- Secure digital card/MultiMediaCard
- Compact flash type I and type II, including microdrives

Your AiO printer also supports the following memory cards using Memory Stick and SD/MMC card slot adaptors, which you can purchase.

- Memory stick Duo
- miniSD
- MicroSD (TransFlash)

The memory card light is a green LED located near the memory card slots. It lights up whenever you insert a memory card and flashes while the card is being read. The flashing serves as an indication to not remove the card while it is being read or written to, which could potentially damage the data on the card.

## Automatic document feeder

The automatic document feeder on the scanner has a tray capacity of 35 sheets of 75 to 90 gsm (20 to 24 lb) plain paper. The paper dimensions you can use span from 17.5 to 21.3 cm (7 to 8.5") wide and from 25 to 35 cm (10 to 14") long, including 27.5 x 21.3 cm (11 x 8.5") pages. Paper is automatically detected when loaded.



### CAUTION

The automatic document feeder is for plain paper only and cannot feed photo paper.

NOTE: You can make 2-sided to 1-sided copies, but not full duplex copies.

## 2 Getting started

It is important to find a good location for your AiO printer. Place the printer on a clean, flat surface in a dry location and out of direct sunlight. Make sure the printer has proper ventilation.

Avoid areas where ventilation ducts, open doors or high traffic might expose the AiO printer and paper to high levels of dust and debris. Airborne particles can affect picture quality.

Allow enough space on all sides of the AiO printer to allow you to connect and disconnect cables, change the ink cartridges and remove and load paper.

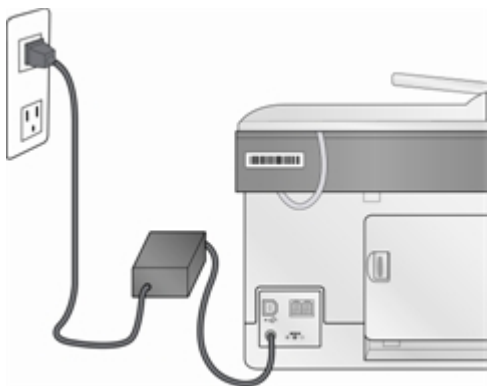
### Connect power



#### RISK OF ELECTRICAL SHOCK

Use only the AC power adaptor included with your AiO printer. Other adaptors or leads could damage your printer or computer.

- 1 Connect the printer power cord to the AC power adaptor, then to the back of the AiO printer.
- 2 Plug the AC adaptor power lead into a power outlet.



### Install the printhead

The printhead dispenses the ink from the cartridges onto the paper.

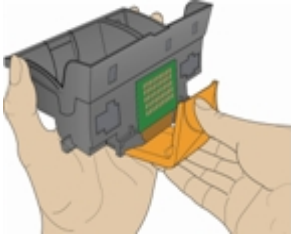
- 1 Make sure the AiO printer is on.
- 2 Open the printer access door. The carriage moves to a centre position.



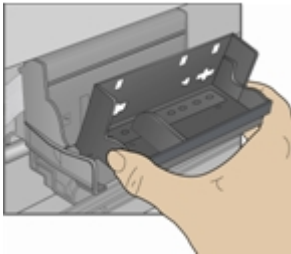
- 3** Remove the printhead from its bag.



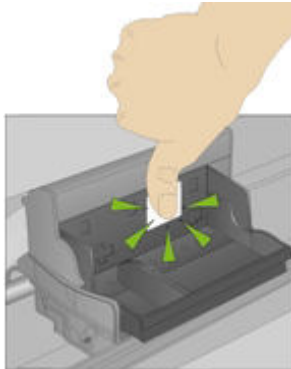
- 4** Remove and discard the clear plastic casing and the orange protective cap.



- 5** Place the printhead into the carriage.



- 6** Push against the back wall of the printhead until it clicks into place.

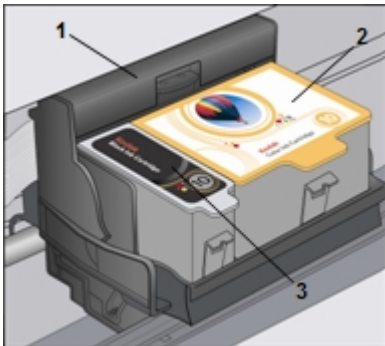


- 7** Install the ink cartridges.



## Install ink cartridges

After installing the printhead, you need to install the black and colour ink cartridges.



- 1 Printhead
- 2 Colour ink cartridge
- 3 Black ink cartridge

- 1 Tear open the black ink cartridge bag at the notch and remove the ink cartridge.  
**IMPORTANT:** Insert the ink cartridge immediately to prevent any drying of the ink.



- 2 Remove and discard the orange cap.  
**IMPORTANT:** Handle ink cartridge carefully to avoid ink transfer.



- 3 Insert the black ink cartridge into the printhead.



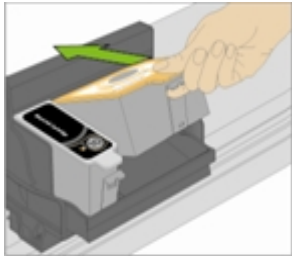
- 4** Press down on the ink cartridge until you hear it snap into position.



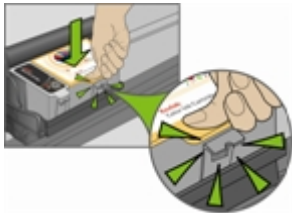
- 5** Tear open the colour ink cartridge bag at the notch and remove the ink cartridge.



- 6** Remove and discard the orange cap.  
**7** Insert the colour ink cartridge into the printhead.



- 8** Press down firmly on the cartridge until you hear it snap into position.



- 9** Close the printer access door.

NOTE: For the best quality prints, store ink cartridges in a location where the temperature does not exceed 30°C (85°F).

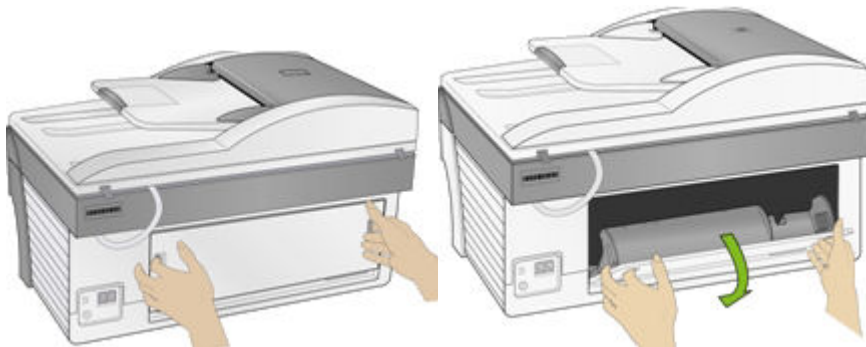
## Install the duplexer

The Kodak AiO printer supports an optional duplexer (Kodak EasyShare 5000 Series two-sided printing accessory) that enables printing on both sides of the paper. When installed, the duplexer is automatically detected by the printer and computer system software.

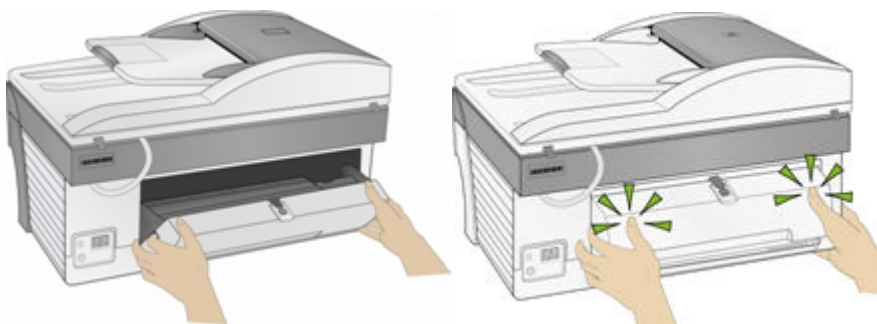
The duplexer is limited to plain paper (no photo paper). The paper dimensions that can be used are from 17.5 to 21.6 cm (6.9 to 8.5 inches) wide and from 24.9 to 29.7 cm (9.8 to 11.7 inches) long.

You can purchase a duplexer and other accessories for your printer at [www.kodak.com/go/accessories](http://www.kodak.com/go/accessories).

- 1 Remove the door on the back of the printer by pressing in on the two latches and pulling out.



- 2 Insert the bottom of the duplexer into the printer and press the top in until it clicks.



You can control how long the printer waits before a sheet is flipped by the duplexer with the AiO Home Centre (See *General settings*).


## Start-up

When you power on your Kodak EasyShare All-in-One, status information is displayed on the LCD. After the start-up is complete, the AiO printer enters Copy mode unless a photo device is attached. If a photo device is attached or memory card inserted, the AiO printer enters Photo mode.

## Menus

The Kodak AiO printer menus are accessed by the Menu, Photo, Copy, Scan and Fax buttons.

## Menu button

Help	OK	Installing Ink Cartridges Making a Copy Making a Photo Making a Scan Calibrating Printer	
Photo Print Settings	OK	Use print order if found	◀ or ▶ Yes No
		Scene balance	◀ or ▶ On Off
		Add Date to Prints	◀ or ▶ No Yes
Control Panel Settings	OK	Button Sounds	◀ or ▶ On Off
		Minutes to standby	◀ or ▶ 10-30
Ink levels	OK		
Proofsheet	OK	Print Proofsheet Scan Proofsheet	
Fax settings	OK	Ans. Machine Mode	◀ or ▶ No Yes
		Rings to answer	◀ or ▶ 1-5
		Busy redial attempts	◀ or ▶ 1-14
		Redial if No Answer	◀ or ▶ No Yes
		Fax speaker	◀ or ▶ Off On
		Print fax confirmation page	◀ or ▶ No Yes
		Dialling mode	◀ or ▶ Tone Pulse
		Disable call waiting	◀ or ▶ No Yes
		Error correction	◀ or ▶ Off On

		Fax speed	◀ or ▶	33.6K Baud (V.34) 14.4K Baud (V.37) 9.6K Baud (V.29)
Print fax settings	<b>OK</b>	Prints the current fax settings.		
Fax header	<b>OK</b>	Fax Header Form		
Print fax cover page	<b>OK</b>	Prints fax cover sheet.		
Print fax activity log	<b>OK</b>	Prints a report of fax activities.		
Clean Printhead	<b>OK</b>	Basic Clean Deep Clean		
Calibrate printer	<b>OK</b>	Print Calibration Page Scan Calibration Page		
Format memory card	<b>OK</b>	Formats inserted memory card.		
Print Demo Sheet	<b>OK</b>	Prints a demonstration page.		
Print diagnostic sheet	<b>OK</b>	Prints a diagnostics page.		
Date and Time	<b>OK</b>	Year	◀ or ▶	2006-2099
		Month	◀ or ▶	January-December
		Day	◀ or ▶	1-31
		Hour	◀ or ▶	0-24
		Minute	◀ or ▶	0-60
Language	◀ or ▶	<List of Languages>		
Reset all Settings	<b>OK</b>			

## Photo button

Layout	◀ or ▶	Borderless Bordered 2 per page 3 per page 4 per page 9 per page Index 2x2 poster 3x3 poster 4x4 poster
Quantity	◀ or ▶	1-99
Colour	◀ or ▶	Colour Black & white:
Quality	◀ or ▶	Normal Best Draft
Save settings	◀ or ▶	No Yes

## Copy button

Quantity	◀ or ▶	1-99
Colour	◀ or ▶	Black & white: Colour
Quality	◀ or ▶	Normal Draft Best
Output	◀ or ▶	Same Size Fit to Page Scale Percent Photo Layouts
Size	◀ or ▶	Output = Scale Percent 10-500 Output = Photo Layouts Borderless Bordered 2 per page 3 per page 4 per page 9 per page Index 2x2 poster 3x3 poster 4x4 poster
Brightness	◀ or ▶	-3 to +3
Preview	◀ or ▶	No Yes (photo layouts only)
Save settings	◀ or ▶	No Yes

## Scan button

Scan What	◀ or ▶	Document
		Photo
Scan To	◀ or ▶	File
		Application: Memory Card
Application:	◀ or ▶	AiO Home Centre
Save settings	◀ or ▶	No
		Yes

## Fax button

Resolution	◀ or ▶	Fine
		Standard
		Photo
Colour	◀ or ▶	Black & white:
		Colour
Brightness	◀ or ▶	-3 to +3
Save settings	◀ or ▶	No
		Yes

## Demo sheet

You can print a page that demonstrates the functions and features of your Kodak AiO printer printer.

- 1 Press **Menu**.
- 2 Press ▼ until **Print Demo Sheet** is selected.
- 3 Press **OK**.
- 4 Press **Start** to begin printing.

## Transfer photos

When you take photos with your digital camera, you can print them immediately or save them directly to your computer. You can transfer from memory cards, PTP cameras and USB mass storage devices.

- 1 Insert a memory card into the appropriate slot or connect a camera to the USB port.



### WARNING

Never attempt to remove a memory card while it is being accessed. Doing so may damage files on the card. You can safely remove a card only when the status light next to the slots is not blinking.



- 2 Press **Transfer**.
- 3 Press **Start** to transfer.
- 4 Complete the transfer with the Transfer dialog on your computer.

## Configuring settings

You can configure settings for your Kodak AiO printer using the control panel and the AiO Home Centre software.

### Use print order if found

The Digital Print Order Format (DPOF) is an industry-standard file that can be created by some digital cameras. Camera-selected photos are photos you tag for printing with your digital camera. When you select photos with your camera, the camera creates a DPOF file that identifies which photos have been tagged for printing. Your Kodak AiO printer can read the DPOF file from the memory card in a camera so you do not have to re-select the photos to print.

NOTE: Not all digital cameras allow you to tag your photos for printing. See your digital camera documentation to see if it supports tagging (DPOF).

When you print tagged photos, the selected default layout is applied, unless your camera allows selection of sizes.

The DPOF file is stored by the digital camera on a memory card and specifies the following information:

- Which photos to print
- The quantity of each photo to print
- Index printing (thumbnails of selected photos)

The default setting for using a detected DPOF file is Yes.

- 1 Press **Menu** to display the main menu.
- 2 Press ▼ to select **Photo Print Settings**.
- 3 Press **OK**.
- 4 Press ▼ to select **Use Print Order if Found**.
- 5 Press ◀ or ▶ to change the setting.
- 6 Press **OK**.

### Scene balance

Your AiO printer can be configured to apply automatic scene balance improvements (brightness) for photos printed on the AiO from camera cards, USB connected devices and wireless devices. The default is to apply the scene balance improvements.

- 1 Press **Menu** to display the main menu.
- 2 Press ▼ to select **Photo Print Settings**.
- 3 Press **OK**.

- 4 Press ▼ until **Scene Balance** is selected.
- 5 Press ◀ or ▶ to enable or disable Scene Balance.
- 6 Press OK.

## Add Date to Prints

You can set your AiO printer to print the date a picture was taken on the photo print. The default is to not print the date.

- 1 Press **Menu** to display the main menu.
- 2 Press ▼ to select **Photo Print Settings**.
- 3 Press OK.
- 4 Press ▼ until **Add Date to Prints** is selected.
- 5 Press ◀ or ▶ to enable or disable date printing.
- 6 Press OK.

## Button Sounds

You can configure your AiO printer to emit an audio feedback beep when you press a button on the control panel. The default setting is to beep.

- 1 Press **Menu** to display the main menu.
- 2 Press ▼ until **Control Panel Settings** is selected.
- 3 Press OK.
- 4 Press ◀ or ▶ to enable or disable button sounds.
- 5 Press OK.

## Minutes to standby

When the Kodak EasyShare All-in-One is idle for the standby power setting timeout period, it enters the Standby state. The **On/Off** indicator remains lit, but power consumption is reduced. When in the Standby state, any activity such as a single button press or inserting a memory card brings the AiO printer out of the Standby state and returns it to the Ready state.

NOTE: Faxes and print jobs from wireless devices (included PCs linked over the WLAN) can be received while in standby.

You can set the standby timeout from 10 – 30 minutes. The default setting is 30 minutes.

- 1 Press **Menu** to display the main menu.
- 2 Press ▼ until **Control Panel Settings** is selected.
- 3 Press OK. The Power Settings menu is displayed with **Minutes to Standby** selected.
- 4 Press ◀ or ▶ to change the standby timeout period.
- 5 Press OK.

## Date and time

Your Kodak EasyShare All-in-One contains a clock for stamping the date and time on scans to a memory card and on faxes.

- 1 Press **Menu** to display the main menu.
- 2 Press **▼** until **Date and Time** is selected.
- 3 Press **OK** to go to the Date and Time menu.
- 4 Press **◀** or **▶** to set the **Year**.
- 5 Press **OK**.
- 6 Press **◀** or **▶** to set the **Month**.
- 7 Press **OK**.
- 8 Press **◀** or **▶** to set the **Day**.
- 9 Press **OK**.
- 10 Press **◀** or **▶** to set the **Hour**.
- 11 Press **OK**.
- 12 Press **◀** or **▶** to set the **Minute**.
- 13 Press **OK**.

## Set language

You can select the language the AiO printer uses for the LCD display.

- 1 Press **Menu** to display the main menu.
- 2 Press **▼** until **Language** is displayed.
- 3 Press **OK** to go to the Select Language menu.
- 4 Press **▼** until the language you want is selected.
- 5 Press **OK**.

## Reset all settings

You can restore the original factory settings to your Kodak EasyShare All-in-One.

NOTE: Restoring the factory defaults will not change the date and time information you set.

- 1 Press **Menu** to display the main menu.
- 2 Press **▼** until **Reset All Settings** is selected.
- 3 Press **OK**.

## Fax connections

After completing all the steps in the Set-up Poster, follow the instructions in this section to connect the fax feature of your Kodak AiO printer.

### Phone lines

The Kodak 5500 AiO printer is an analogue device and standard phone lines are analogue. However, cable lines and some office PBX systems are digital. When connecting your 5500 AiO to a digital phone line, connect a digital-to-analogue adaptor between your digital line and your 5500 AiO.

NOTE: Some cable companies install a digital-to-analogue adaptor with their phone service.

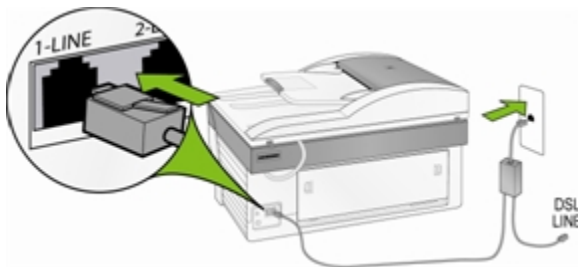
### DSL line

If you have Digital Subscriber Line (DSL) service through your phone company, follow the instructions in this section to connect a DSL filter between the telephone wall jack and your Kodak AiO printer. This filter removes the digital signal that would block your AiO printer from communicating properly with the telephone line.



#### CAUTION

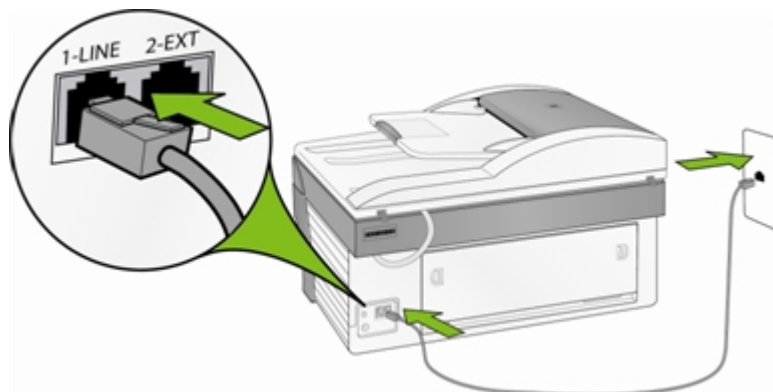
If you have a DSL line and do not connect the DSL filter, you will not be able to send and receive faxes with your AiO printer.



- 1 Obtain a DSL filter from your DSL provider.
- 2 Connect the phone cord supplied with your Kodak AiO printer to the open port on the DSL filter and the port labelled **1-LINE**.
- 3 Connect the DSL filter cord to the telephone wall jack.

## Separate fax line (no voice)

Connect your Kodak AiO printer to the phone line as shown in the illustration if you have a separate fax line on which you receive no voice calls and you have no other equipment connected to this phone line.

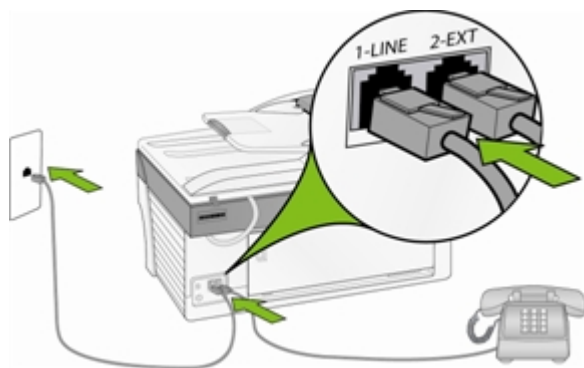


- 1 Connect the phone cord supplied with your AiO printer to your telephone wall jack and the port labelled **1-LINE**.
- 2 Set Answering Machine Mode on your All-in-One to On.

When the phone rings, your AiO printer will answer automatically after the number of rings you set in the Rings to Answer setting. It will then send fax reception tones to the sending fax machine and receive the fax.

## Shared voice/fax line

Your All-in-One will not be able to distinguish between fax and voice calls with this connection. Therefore you will need to answer voice calls before your AiO printer answers. The default setting for Rings to Answer is 4.



- 1 Connect the phone cord supplied with your AiO printer to your telephone wall jack and the port labelled **1-LINE**.
- 2 Connect your phone to the port labelled **2-EXT** on the back.

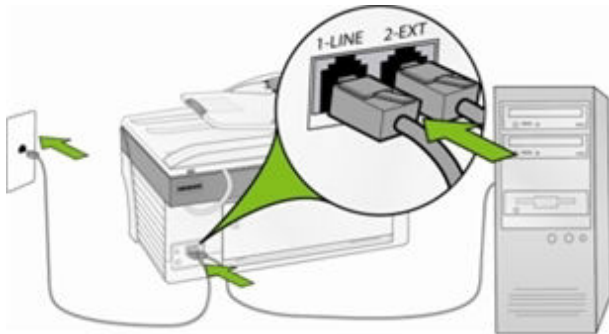
Your All-in-One will not be able to distinguish between fax and voice calls with this connection. Therefore, you will need to answer faxes manually.

When you receive a fax call, press **Fax**. The AiO printer will answer the call and display *Printing incoming fax*.

## Fax line with modem

Connect your Kodak AiO printer to the phone line as shown in the illustration if you have a fax line on which you receive no voice calls and you also have a modem connected on this line.

NOTE: Since your modem shares the telephone line with your AiO printer, you will not be able to use both your computer modem and fax simultaneously. For example, while you are sending and receiving faxes, you will not be able to e-mail or access the Internet.

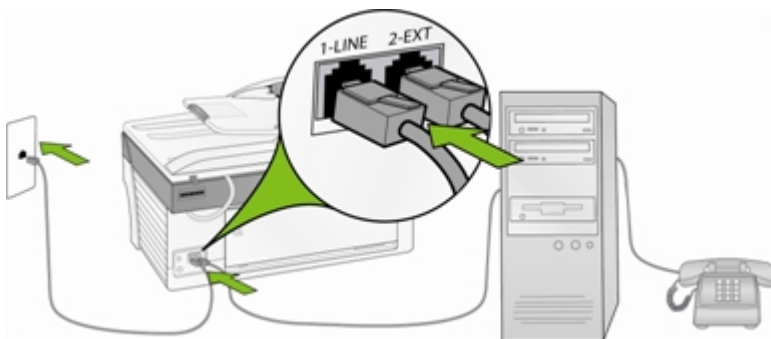


- 1 Disconnect the phone cord from the wall jack that connects your modem to the telephone wall jack and plug it into the port labelled **2-EXT** on your All-in-One.
- 2 Connect the phone cord supplied with your All-in-One to your telephone wall jack and the port labelled **1-LINE**.
- 3 Set Answering Machine Mode on your All-in-One to On.
- 4 If your modem software is set to automatically receive faxes to your computer, set it to Off.

When the phone rings, your AiO printer will answer automatically after the number of rings you set in the Rings to Answer setting. It will then send fax reception tones to the sending fax machine and receive the fax.

## Shared voice/fax with modem

Connect your Kodak AiO printer to the phone line as shown in the illustration if you receive both voice calls and fax calls at the same phone number and you also have a modem connected on this phone line.



NOTE: Since your modem shares the telephone line with your AiO printer, you will not be able to use both your computer modem and your All-in-One simultaneously. For example, while you are sending and receiving faxes, you will not be able to e-mail or access the Internet.

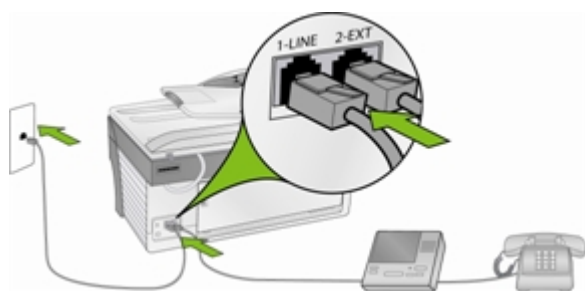
- 1 Disconnect the phone cord from the wall jack that connects your modem to the telephone wall jack and plug it into the port labelled **2-EXT** on your All-in-One.
- 2 Connect a phone to the **Out** port on the back of your modem.
- 3 Connect the phone cord supplied with your AiO printer to your telephone wall jack and the port labelled **1-LINE**.
- 4 If your modem software is set to automatically receive faxes to your computer, set it to **Off**.

Your All-in-One will not be able to distinguish between fax and voice calls with this connection. Therefore, you will need to answer faxes manually.

When you receive a fax call, press **Fax**. The AiO printer will answer the call and display *Printing incoming fax*.

## Shared with answering machine

Connect your Kodak AiO printer to the phone line as shown in the illustration if you receive both voice calls and fax calls at the same phone number with an answering machine.

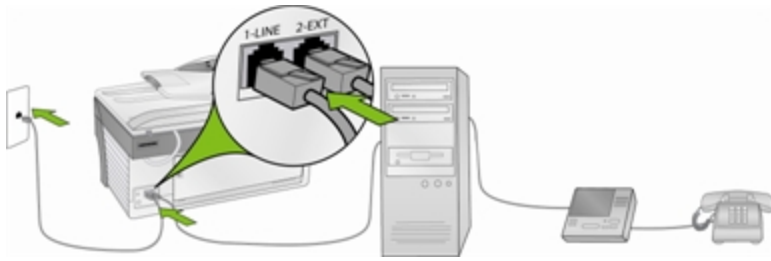


- 1 Disconnect the phone cord from the wall jack that connects your modem to the telephone wall jack and plug it into the port labelled **2-EXT** on your All-in-One.
- 2 Connect the phone cord supplied with your AiO printer to your telephone wall jack and the port labelled **1-LINE**.
- 3 Set Answering Machine Mode on your All-in-One to **On**.

The AiO printer will not automatically answer calls. Instead, the answering machine will answer the call and the AiO printer will monitor the line. If the AiO printer detects fax tones, the AiO printer will receive the fax. If the call is a voice call, the AiO printer ignores the call.

## Voice/fax with modem and answering machine

Connect your Kodak AiO printer to the phone line as shown in the illustration if you receive both voice calls and fax calls at the same phone number and you also have a modem and answering machine connected.



NOTE: Since your modem shares the telephone line with your AiO printer, you will not be able to use both your computer modem and your All-in-One simultaneously. For example, while you are sending and receiving faxes, you will not be able to e-mail or access the Internet.

- 1 Disconnect the phone cord from the wall jack that connects your modem to the telephone wall jack and plug it into the port labelled **2-EXT** on your All-in-One.
- 2 Make sure your answering machine is connected to the **Out** port on the back of your modem. This provides a direct connection between the All-in-One and your answering machine, even though the modem is connected first.



**CAUTION:**

If you do not connect your answering machine in this way, fax tones from a sending fax machine could be recorded on your answering machine and you may not be able to receive faxes.

- 3 Connect the phone cord supplied with your AiO printer to your telephone wall jack and the port labelled **1-LINE**.
- 4 If your modem software is set to automatically receive faxes to your computer, set it to **Off**.
- 5 Set Answering Machine Mode on your All-in-One to **On**.

The AiO printer will not automatically answer calls. Instead, the answering machine will answer the call and the AiO printer will monitor the line. If the AiO printer detects fax tones, the AiO printer will receive the fax. If the call is a voice call, the AiO printer ignores the call.



## 3 Handling and loading paper

Use the following guidelines when handling paper:

- To avoid fingerprints, handle the paper by the edges as much as possible.
- Avoid touching the glossy side of the photo paper.
- Keep the input and 150 x 100 mm (6 x 4") paper trays closed to keep out dust and debris.
- Store paper flat.
- Keep paper away from direct sunlight and out of high-temperature environments (such as a vehicle parked in the sun).

You can load many different types and sizes of paper in your Kodak AiO printer, including letter paper, photo paper, transparencies and envelopes (see *Paper types* in the Appendix). The AiO printer automatically detects the size and type of paper you load in the input tray and then adjusts to generate the highest quality output for that paper.

### The scanner glass

The scanner glass or automatic document feeder is where you place originals for copying, scanning or faxing.

- 1 Lift the lid and place your original face down on the rear left-hand corner of the scanner glass or place a stack of originals (up to 35 sheets of 75 gsm [20 lb] plain paper) face up in the automatic document feeder.



## Load main tray

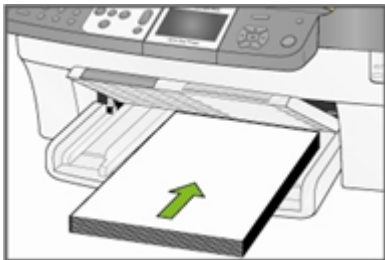
You can load the main paper tray with various types of paper from 7.5 to 21.3 cm (3 to 8.5 inches) wide and 12.5 to 35 cm (5 to 14 inches) long, with a capacity of 100 sheets of 75 gsm (20 lb) plain paper (clean stack of new paper).

**IMPORTANT:** To print from the main paper tray, make sure the photo tray is not engaged, is pulled all the way out and that the lid is closed.

- 1 Lift the output tray and slide the paper-width and paper-length guides to their outermost positions.



- 2 Align the edges of a stack of paper.
- 3 Insert the stack of paper into the input tray with the short edge forward and the print side down. Slide the stack of paper forwards until it stops.



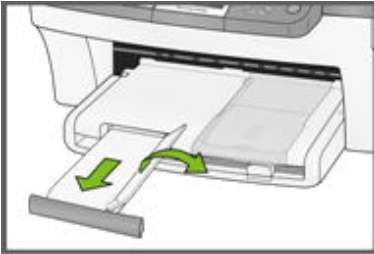
- 4 Slide the paper-width and paper-length guides inwards until they stop at the edges of the paper.



- 5 Lower the output tray.



- 6 Pull the extender tray out.



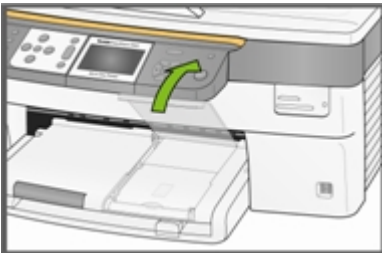
## Load photo tray

You can load up to 20 sheets of 10 mil thick 150 x 100 mm (6 x 4") photo paper into the photo tray.

TIP: To avoid fingerprints, handle the paper by the edges or by the perforated tabs. Avoid touching the glossy side of the paper.



- 1 Lift the photo tray lid.



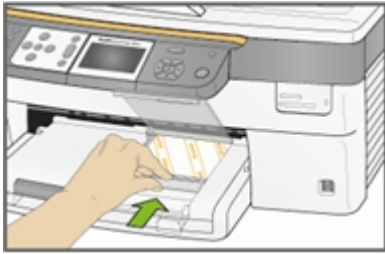
- 2 Slide the photo tray towards you until it stops.

NOTE: When the photo tray is disengaged, the main paper tray is active.

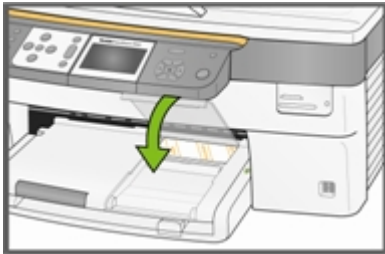
- 3 Insert the stack of photo paper into the photo tray, glossy side down.



- 4 Slide the photo tray with the stack of photo paper in until it stops. Engaging the photo tray turns the photo tray light on.



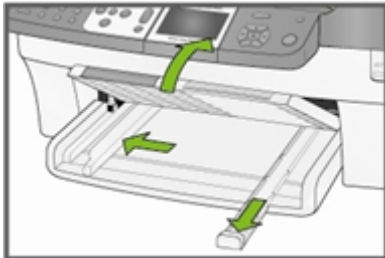
- 5 Close the photo tray lid.



## Load envelopes

You can load plain envelopes into the main input tray of your Kodak AiO printer. Do not use envelopes with cut-outs or cellophane windows.

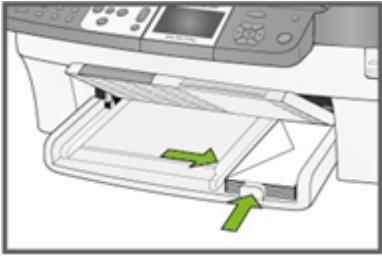
- 1 Lift the output tray.



- 2 Remove any paper in the input tray.
- 3 Insert one or more envelopes face down with the envelope flaps to the left.
- 4 Slide the stack of envelopes forwards until it stops.



- 5 Slide the paper guides inwards against the stack of envelopes until they stop.



- 6 Close the output tray.



## Load labels

Use letter or A4 (designed for use with ink jet printers) label sheets.

- 1 Ensure that none of the pages are sticking together.
- 2 Place a stack of label sheets on top of standard paper in the input tray, label side down.



# 4 Print

The memory card slots accept most of the popular memory cards (see *Supported memory cards*). When you insert a memory card into the card slot or connect a PTP camera or USB flash drive, the first photo is displayed on the LCD display. When you press the **Photo** button, the Photo Print menu is displayed. The **Photo** button toggles between displaying photos and the Photo Print menu.



## CAUTION

You can only use one device (USB or memory card) from which to print. If both devices are engaged, the AiO printer generates an error message.

When you print from an application, the AiO printer driver provides the following features:

### Non-photo paper print quality

**Draft** Produces the fastest print speed but the lowest quality.

**Normal** Delivers high-quality output and is the default setting. Normal prints faster than Best.

**Best** Produces the highest quality for all paper and eliminates the banding (striping) effect that sometimes occurs in solid areas. Best is the slowest print speed.

### Page size

You can select a standard page size or create a custom size.

### Borderless

Prints without any margin on the printed media.

### Orientation

You can print a document with the short edge of the paper at the top of the page (portrait) or with the long edge of the paper at the top of the page (landscape).

### Print last page first

Causes printing to begin with the last page and end with the first page.

NOTE: There can be a delay when printing a large document while it is being spooled. Printing will begin when the last page is spooled.

### Collate

You can collate pages when printing multiple copies.

### Scale layout

You can scale pages or pictures by percentage or page size.

### Multi-page layout

The driver can reduce multiple pages so that they can all be printed on one sheet of paper.

### Poster layout

This function enlarges a picture, divides it into several pages and prints each page on a separate sheet of paper. You can paste these sheets of paper together to create a poster.

### Booklet layout

The pages are distributed and printed on both sides of the paper and arranged in sequence. When they are folded in the middle and stapled, they create a booklet.

### Print mirror image

Flips the image for iron-on printing.

**Two-sided printing**

You can print on both sides of the paper.

**Watermark**

You can select or create a background watermark.

**Print photos from a camera**

- 1 Connect your camera to the AiO printer. The PictBridge logo is displayed on the LCD.



- 2 Load the photo tray with photo paper (See *Load photo tray* in Chapter 3).
- 3 Use your camera to select and print photos.

**Print photos from the control panel**

The Photo Print mode is initiated by pressing the **Photo** button, inserting a memory card or connecting a USB device to the Kodak EasyShare All-in-One.

- 1 Insert a memory card into the appropriate slot or a mass storage device into the USB port, or connect a digital camera to the USB port. The last photo is displayed.

**WARNING**

Never attempt to remove a memory card while it is being accessed. Doing so may damage files on the card. You can safely remove a card only when the status light next to the slots is not blinking.

- 2 Load the main tray (see *Load main tray* in Chapter 3) or photo tray (See *Load photo tray* in Chapter 3) with photo paper.

NOTE: The photo tray only supports 150 x 100 mm (6 x 4") photo paper.

- 3 Press ▲ to select the number of prints for this photo.

- 4 Press ► to preview the next photo.

TIP: To select all the photos on a memory card or mass storage device, hold down the **OK** button for 2 seconds. Holding down the **OK** button again for 2 seconds will de-select all the photos.

- 5 Repeat steps 3 and 4 until you have finished selecting photos.
- 6 Press **Start** to print the selected photos or **Photo** to set print options.

- 7 Set print options.

See *Set print layout*

See *Set number of prints*

See *Set Colour*

See *Set print quality*

After a photo is printed, it is de-selected.



## Index print

The purpose of an index print is to catalogue the contents of a memory card or USB flash drive. An index print contains the following:

- Sequence numbers for the relative position of each photo within the defined set of photos, incrementing from 001 and continuing progressively across all pages of a multi-page index print.
  - 250 x 200 mm (10 x 8") index prints are 22 mm (7/8") wide with 3 mm (1/8") white space between photos. The filename is displayed below each thumbnail image.
  - 150 x 100 mm (6 x 4") index prints are 19 mm (3/4") wide with 3 mm (1/8") white space between images. The filename is displayed below each thumbnail image.
- 1 Insert a memory card into the appropriate slot or a mass storage device into the USB port, or connect a digital camera to the USB port. The first photo is displayed.



### WARNING

Never attempt to remove a memory card while it is being accessed. Doing so may damage files on the card. You can safely remove a card only when the status light next to the slots is not blinking.

- 2 Load the main tray (see *Load main tray* in Chapter 3) or photo tray (See *Load photo tray* in Chapter 3) with photo paper.

NOTE: The photo tray only supports 150 x 100 mm (6 x 4") photo paper.

- 3 Press **Photo**. The Print menu is displayed with Layout selected.
- 4 Press the ◀ or ▶ to select **Index**.
- 5 Press **Start**.

## Print photos from a proofsheets

A proofsheets is a simple and convenient way to select photos and make prints directly from a camera or memory card without the need for a computer.

Proofsheet printing is a two-step process. In the first step, you connect a PTP camera or insert a memory card and print a proofsheets. In the second step, you select pictures to print from the proofsheets and then scan the proofsheets into the AiO printer.

**IMPORTANT:** If the AiO printer goes into standby mode, power is lost or you unplug the memory card, camera or USB device before you scan the proofsheets, the proofsheets session number becomes invalid and you will need to re-print it.

- 1 Insert a memory card into the appropriate slot or a mass storage device into the USB port, or connect a digital camera to the USB port. The last photo is displayed.



**WARNING**

Never attempt to remove a memory card while it is being accessed. Doing so may damage files on the card. You can safely remove a card only when the status light next to the slots is not blinking.

- 2 Load the main tray (see *Load main tray* in Chapter 3) with letter size plain paper.
- 3 Press **Menu**.
- 4 Press ▼ until **Proofsheet** is selected.
- 5 Press **OK**.
- 6 Press **Start** to print the proofsheets.
- 7 Complete the four steps on the proofsheets with the memory card, storage device or camera connected.

## Tagged photos (DPOF)

The Digital Print Order Format (DPOF) is an industry-standard file that can be created by some digital cameras. Camera-selected photos are photos you tag for printing with your digital camera. When you select photos with your camera, the camera creates a DPOF file that identifies which photos have been tagged for printing. Your Kodak AiO printer can read the DPOF file from the memory card in a camera so you do not have to re-select the photos to print.

NOTE: Not all digital cameras allow you to tag your photos for printing. See your digital camera documentation to see if it supports tagging (DPOF).

When you print tagged photos, the selected default layout is applied, unless your camera allows selection of sizes.

The DPOF file is stored by the digital camera on a memory card and specifies the following information:

- Which photos to print
- The quantity of each photo to print
- Rotation applied to a photo
- Cropping applied to a photo
- Index printing (thumbnails of selected photos)

If a DPOF file is detected when you insert a memory card, the AiO printer displays a message asking if you want to print tagged images.

## Bluetooth printing

Bluetooth is a short-range radio technology that enables wireless connectivity between electronic devices. This feature supports an optional Kodak USB Bluetooth Adaptor that accepts JPEG/EXIF image file types from the following types of Bluetooth-enabled devices:



- Mobile camera phones
- PDAs
- Digital still cameras

You can purchase a Bluetooth adaptor directly from Kodak at [www.kodak.com/go/accessories](http://www.kodak.com/go/accessories).

To enable Bluetooth wireless connectivity, plug your Kodak Bluetooth adaptor into the front USB port.



NOTE: Your AiO printer supports connection to only one Bluetooth device at a time and has an 8 MB file size limitation.

### Range

The recommended maximum distance between Bluetooth devices for the highest transfer speed is 10 metres or 32.81 feet. However, Bluetooth will work beyond this distance.

### User-friendly name

Your AiO printer has a serial number that is used to construct a name for Bluetooth printing. The default name is **Kodak5500+XXXX**, where **XXXX** represents the AiO printer's serial number. You can change this to a more user-friendly name with the AiO Home Centre (See *General settings* in Chapter 2).

### Printing

When a Bluetooth connection is made, no other functions are available and the LCD display indicates printing from Bluetooth. You control printing from your Bluetooth device.

## Print with computer

You can print from any application that has a Print command in the **File** menu.

You can also print from Kodak EasyShare software (when installed). Kodak EasyShare software lets you take advantage of a wide range of features, including editing, printing options and picture organisation.

- 1 Click **Print and share pictures EasyShare**.
- 2 Make sure the **My Collection** tab is selected.
- 3 Select an album under **My Albums**.
- 4 Select the pictures you wish to print and drag them to the **picture tray**.
- 5 Click the **Print at Home** tab.
- 6 Make sure the current printer is set to the AiO printer (Click **Printer Set-up**).
- 7 Change any other settings, such as paper size and print layout, then click **Print**.

## Layouts

The photo layouts on your Kodak AiO printer "snap" to the nearest standard print size whenever possible, based on the combination of layout and paper size loaded. Otherwise the layouts are based on a standard 75 x 50 mm (3 x 2") aspect ratio. The table below shows the print sizes that result from the various layouts when applied to US Letter size paper 275 x 213 mm (11 x 8.5").

Layout	A paper print size
Borderless	275 x 213 mm (11 x 8.5")
Bordered	250 x 200 mm (10 x 8")
2 per page	175 x 125 mm (7 x 5")
3 per page	150 x 100 mm (6 x 4")
4 per page	125 x 88 mm (5 x 3.5")
9 per page	81 x 63 mm (3.25 x 2.5") (passport)

In addition to US Letter size paper, your AiO printer provides photo layout support for the following US and ISO 216 paper sizes. US sizes are measured in inches and ISO 216 sizes are based on the metric system.

### US photo paper sizes

- 88 x 125 mm (5 x 3.5")
- 100 x 150 mm (6 x 4")
- 125 x 175 (7 x 5")
- 250 x 200 mm (10 x 8")
- 275 x 213 mm (11 x 8.5")

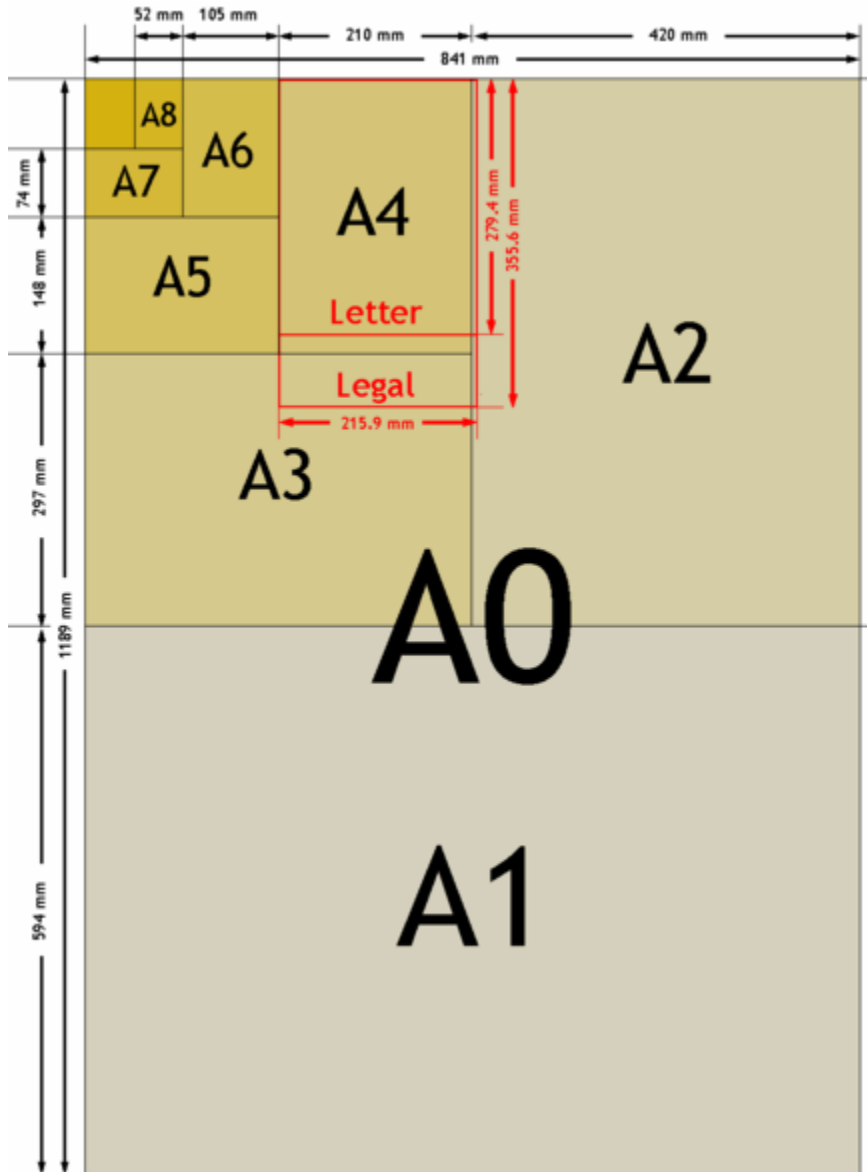
---

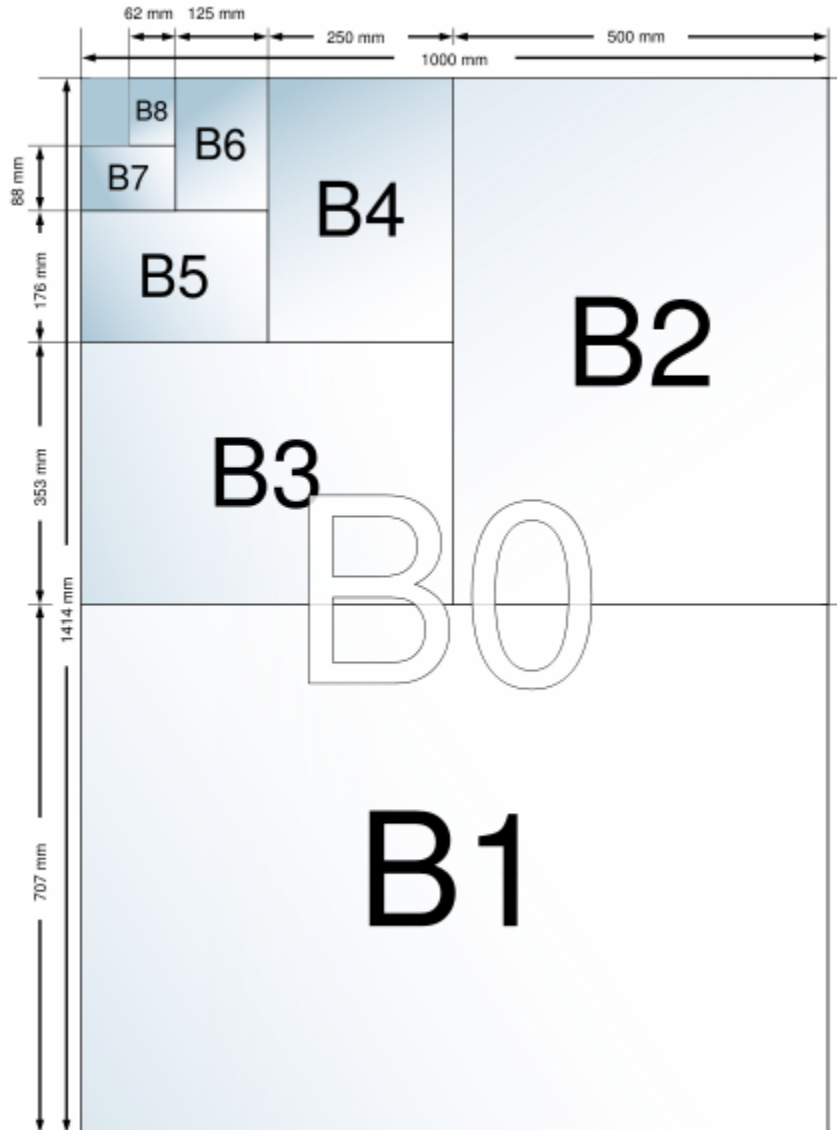
**ISO 216 paper sizes**

- A4 (21 x 30 centimetres)
- A5 (15 x 21 centimetres)
- A6 (10 x 15 centimetres)
- B5 (17.6 x 25 centimetres)

The international paper size standard, ISO 216, consists of an A series and a less common B series. This standard has been adopted by all countries in the world except the United States and Canada. The most widely used size in the ISO format is A4.

The charts on the following pages compare the most common paper sizes.





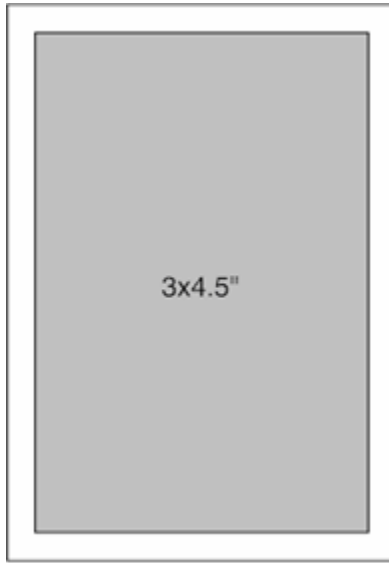
## Set print layout

- 1 Press **Photo**. The Print menu is displayed with **Layout** selected.
- 2 Press ◀ or ▶ to change the print layout.
- 3 Press **OK** to set the selected layout and continue to set options, press **Photo** to preview or **Start** to print.

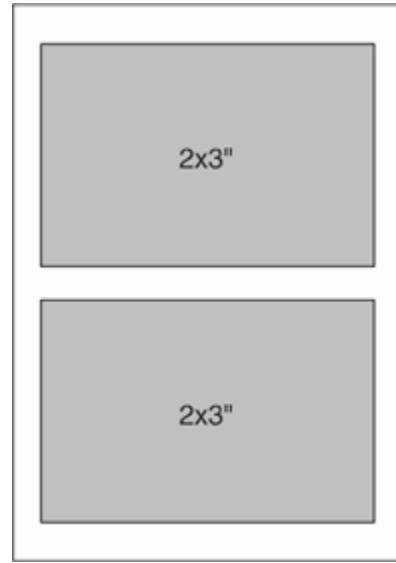
### 125 x 88 mm (5 x 3.5") paper



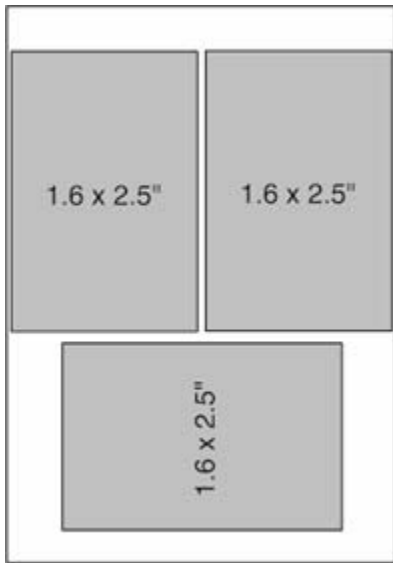
1 per page borderless



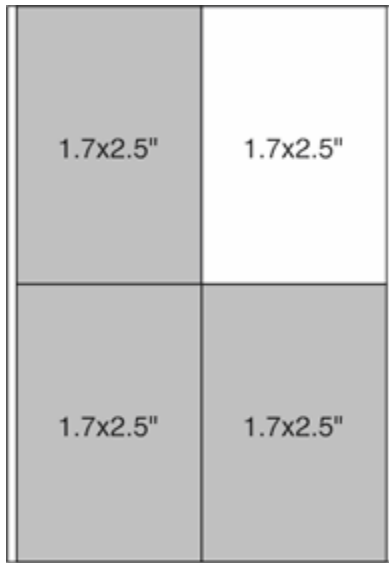
1 per page bordered



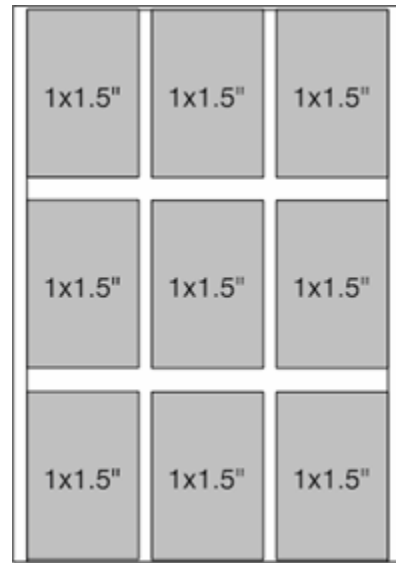
2 per page



3 per page



4 per page



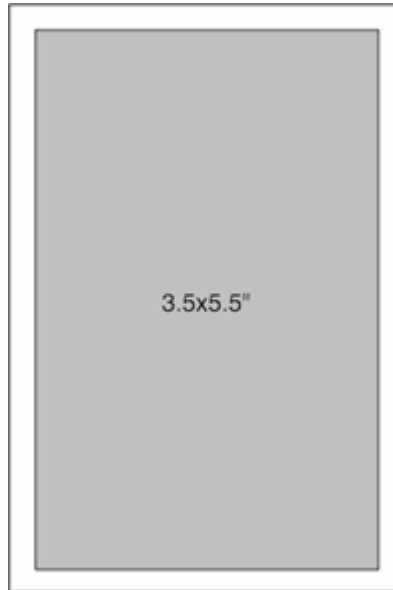
9 per page



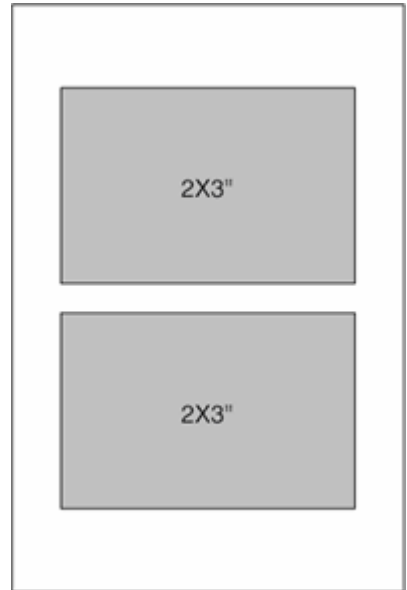
150 x 100 mm (6 x 4") paper



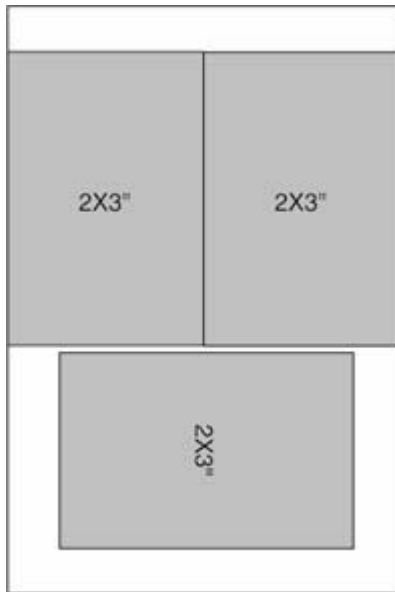
1 per page borderless



1 per page bordered



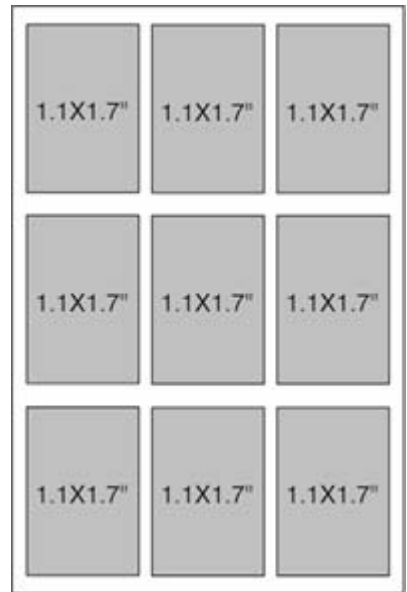
2 per page



3 per page

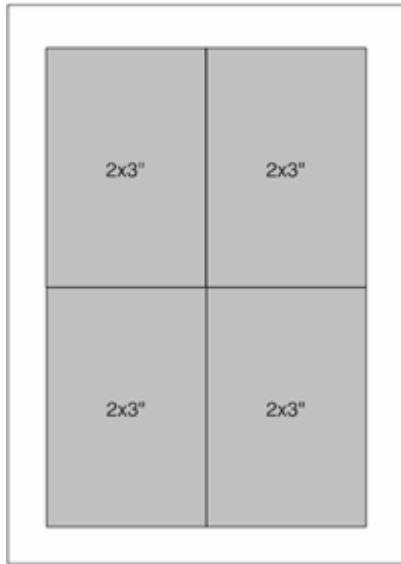
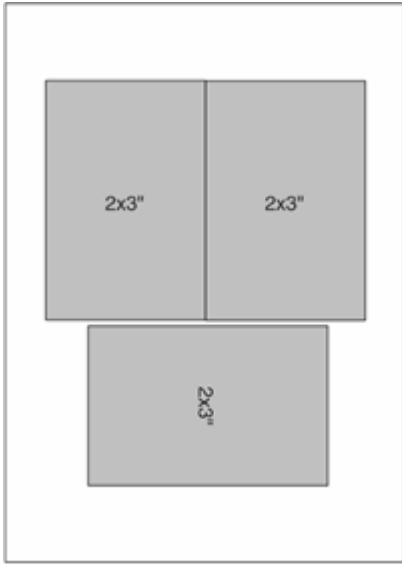
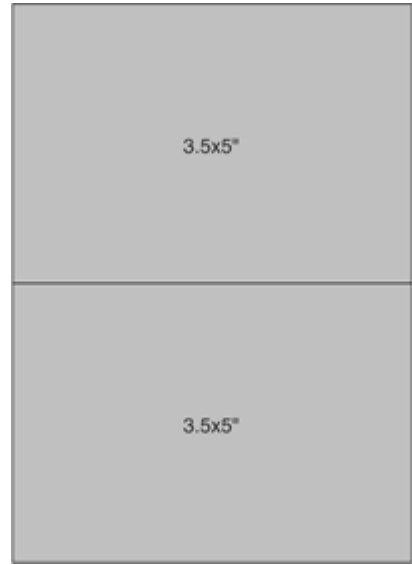
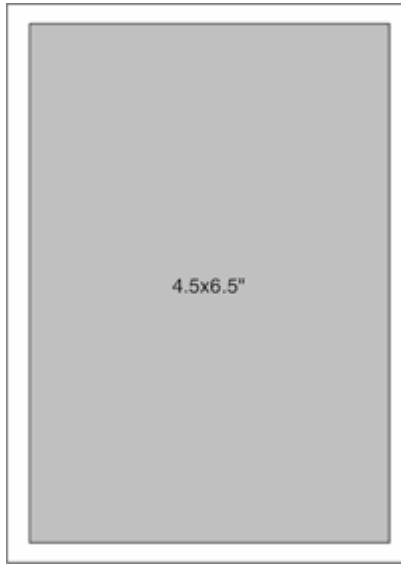
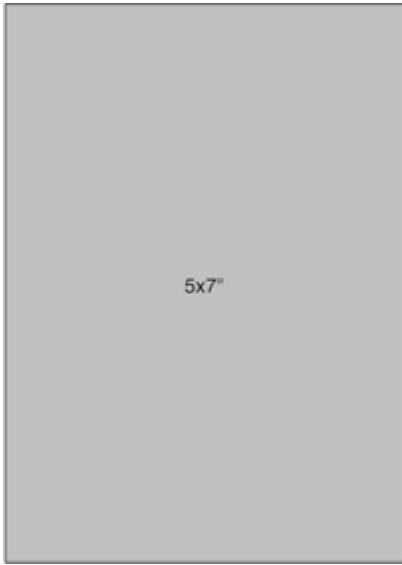


4 per page

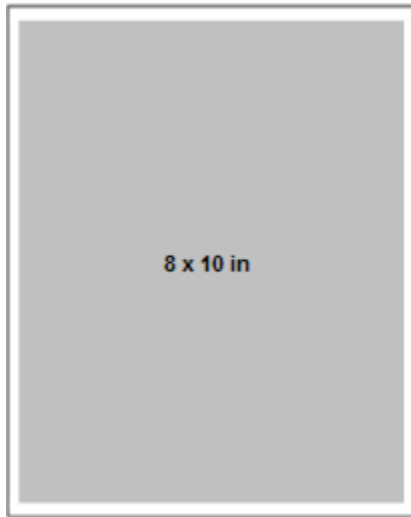


9 per page

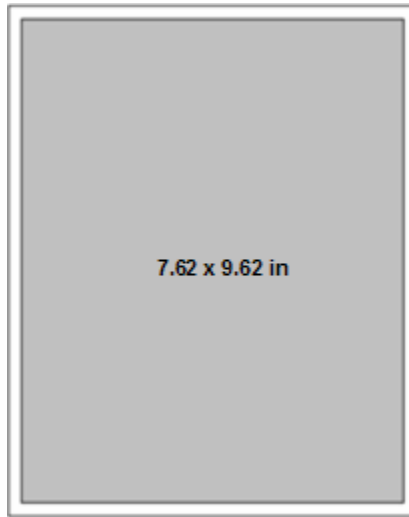
175 x 125 mm (7 x 5") paper



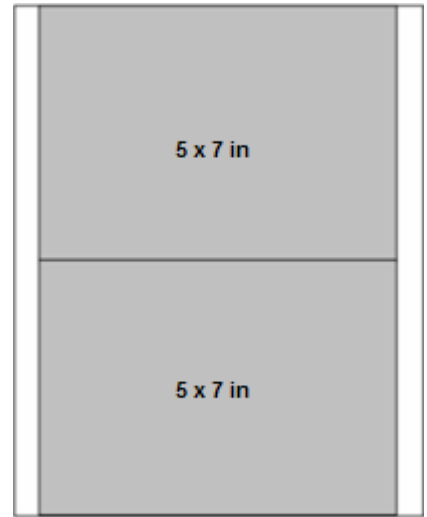
250 x 200 mm (10 x 8") paper



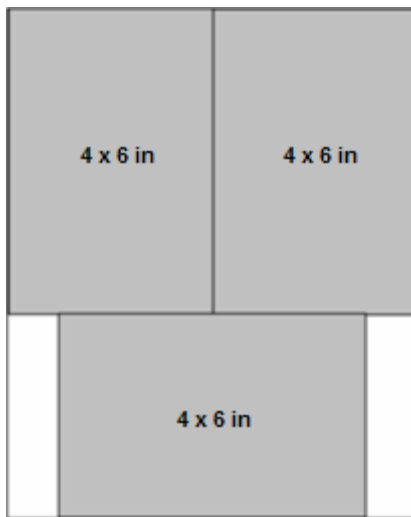
1 per page borderless



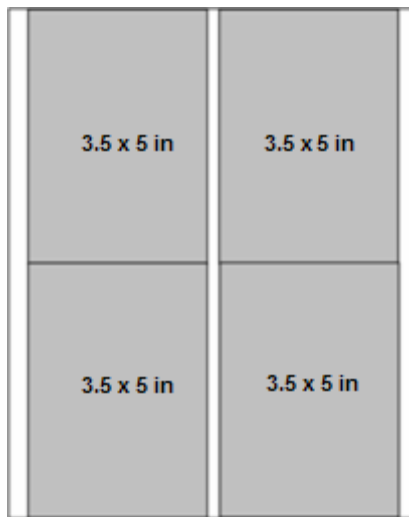
1 per page bordered



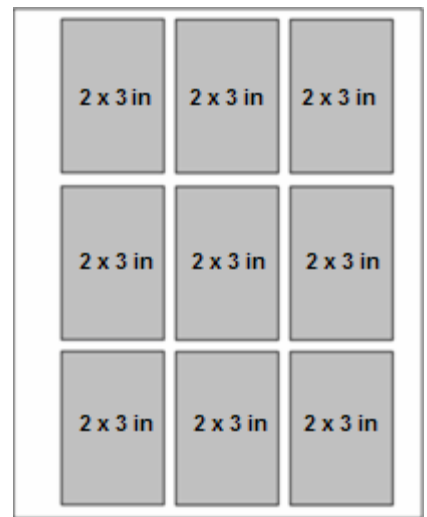
2 per page



3 per page

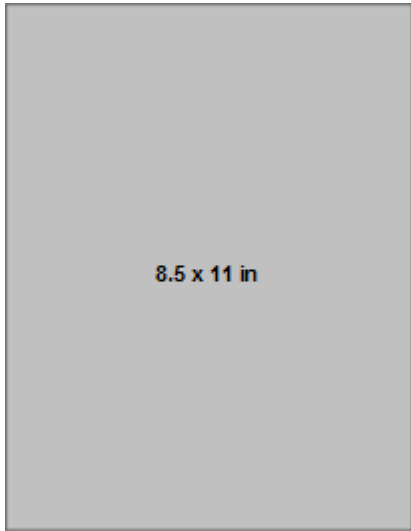


4 per page

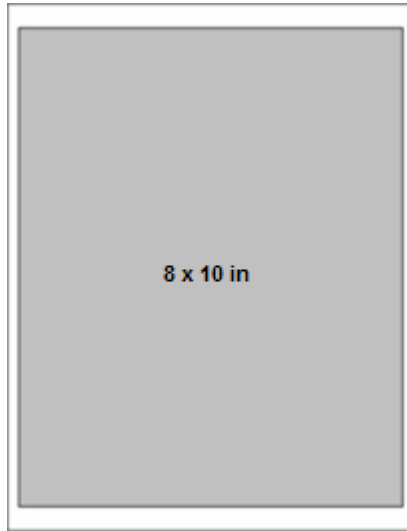


9 per page

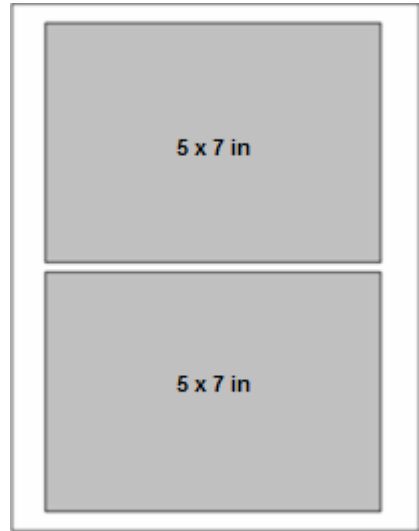
# US Letter



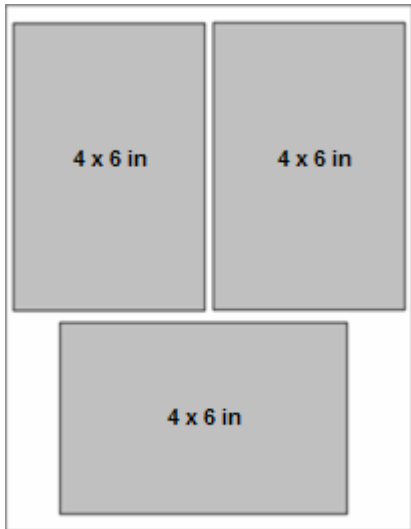
1 per page borderless



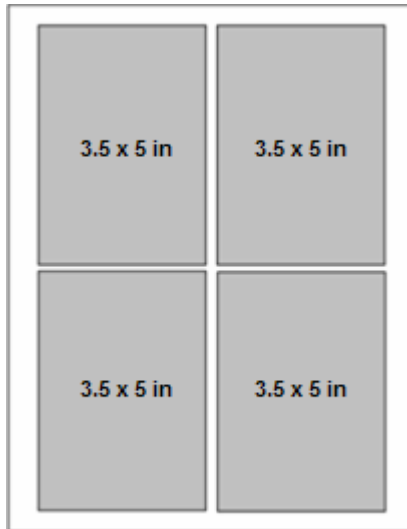
1 per page bordered



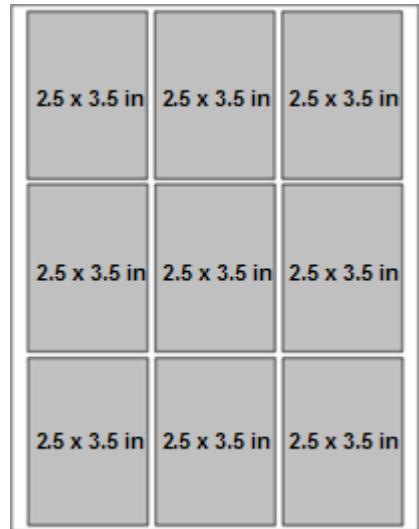
2 per page



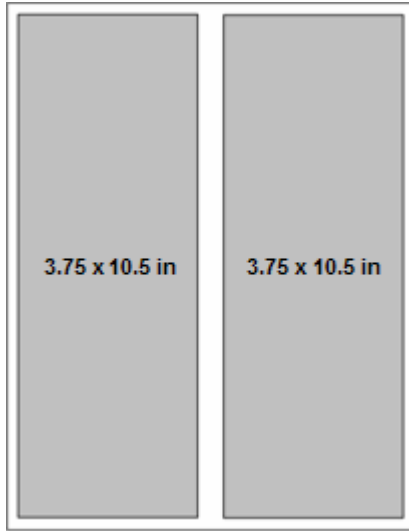
3 per page



4 per page



9 per page



Panoramic

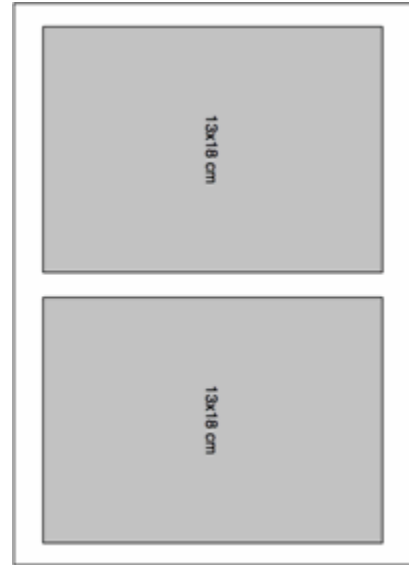
## A4 paper



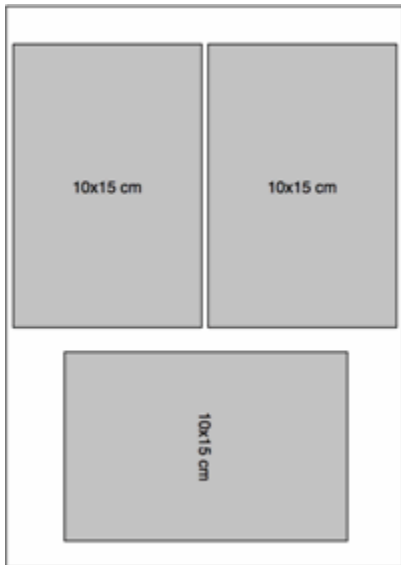
1 per page borderless



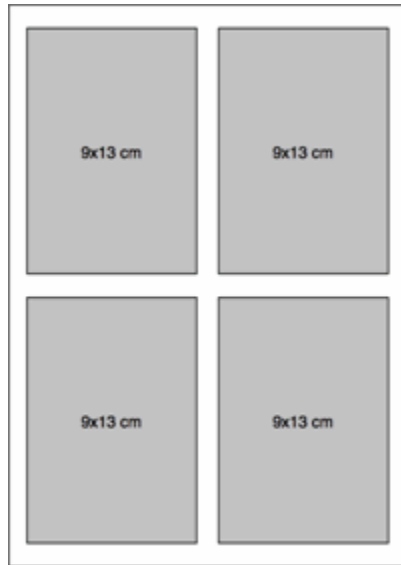
1 per page bordered



2 per page



3 per page

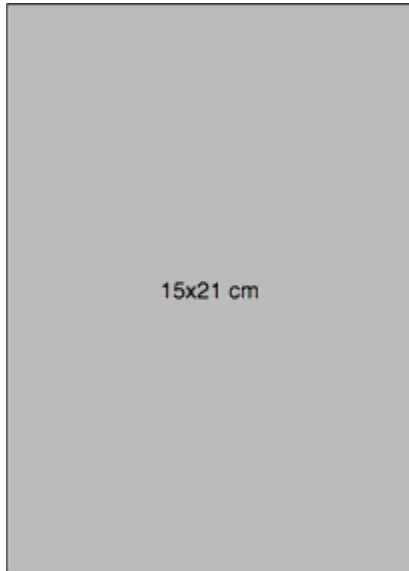


4 per page

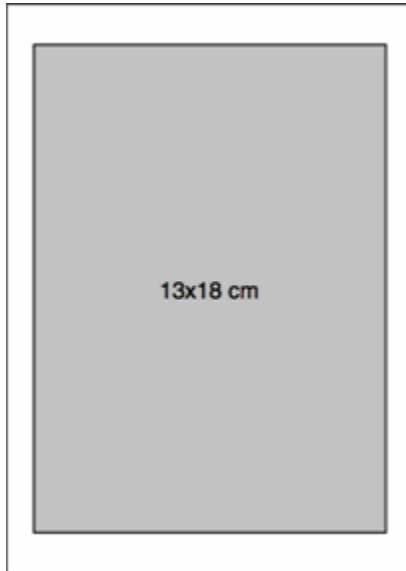


9 per page

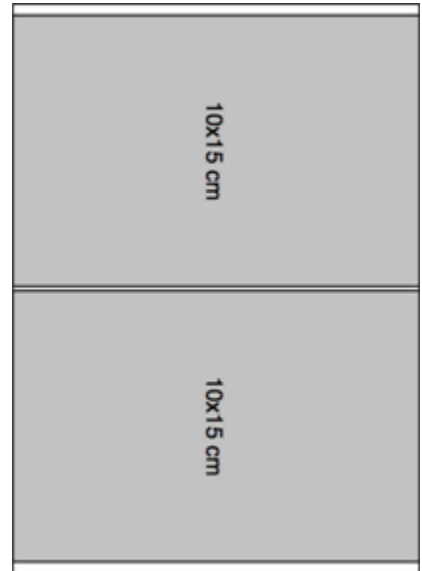
## A5 paper



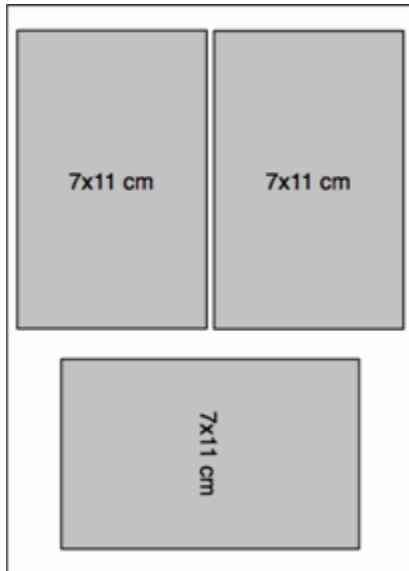
1 per page borderless



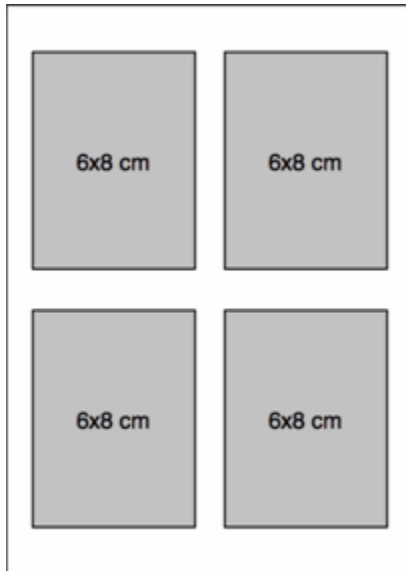
1 per page bordered



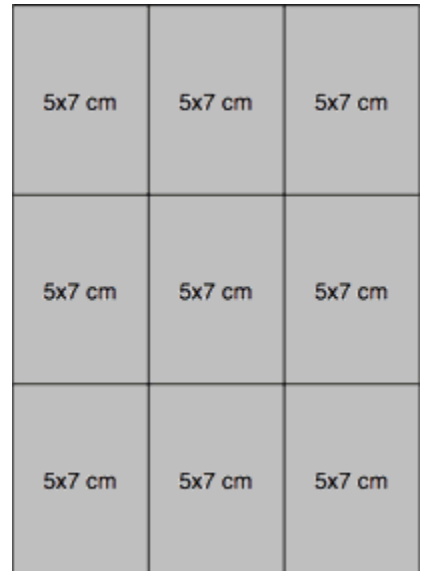
2 per page



3 per page

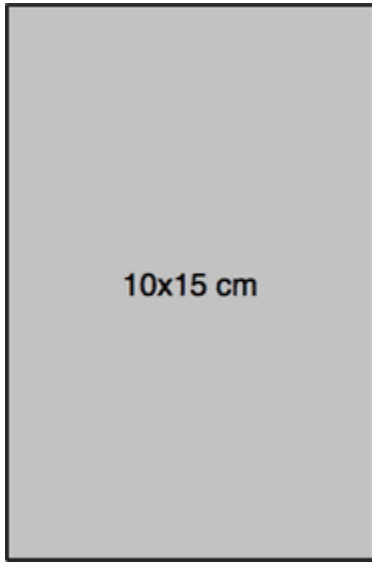


4 per page

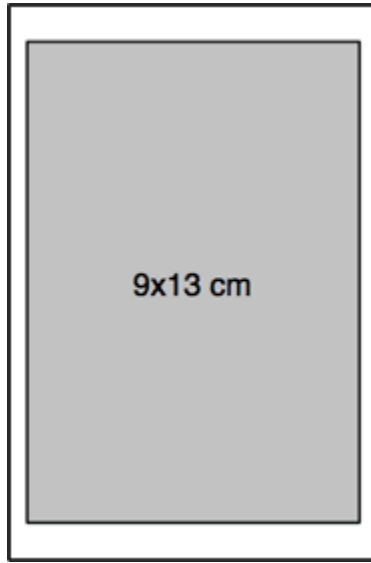


9 per page

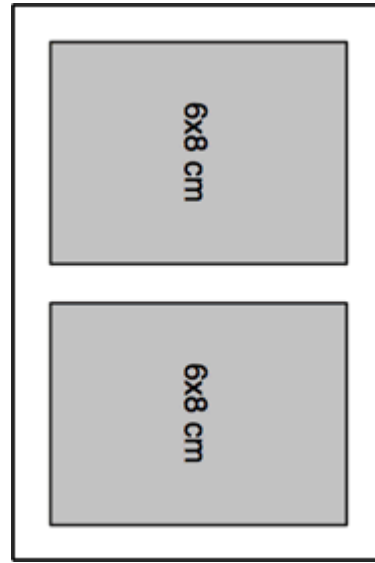
## A6 paper



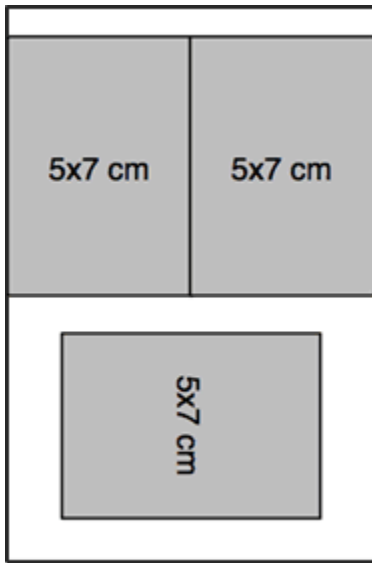
1 per page borderless



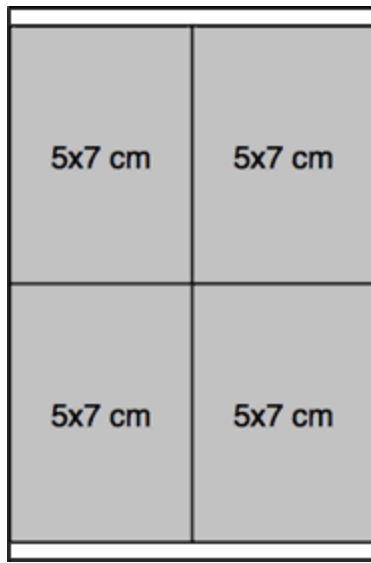
1 per page bordered



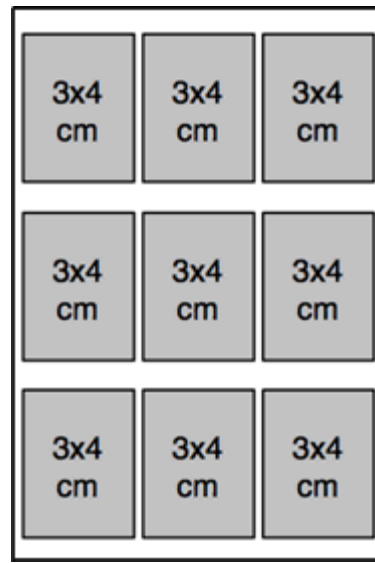
2 per page



3 per page



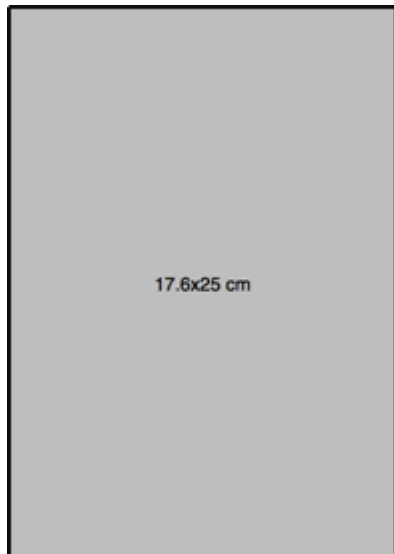
4 per page



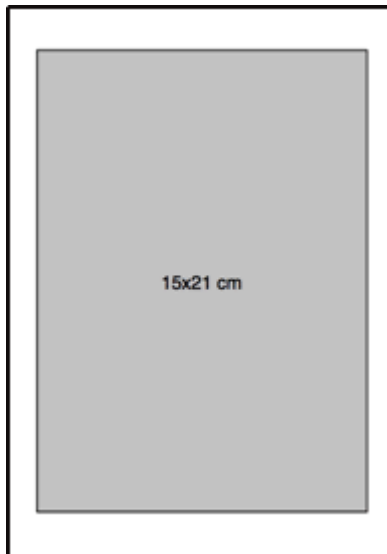
9 per page



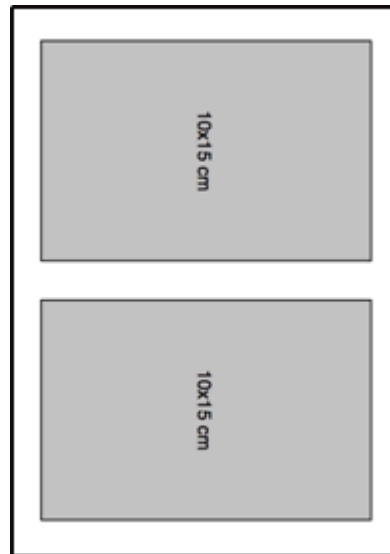
## B5 paper



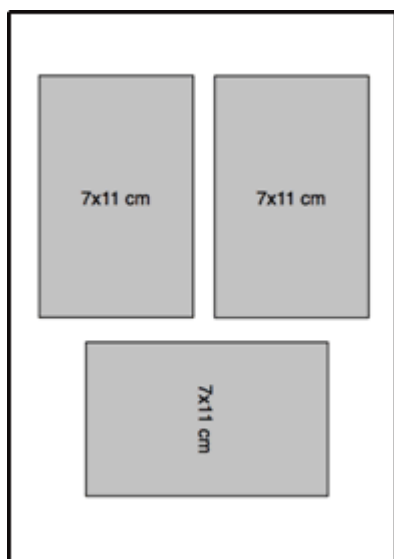
1 per page borderless



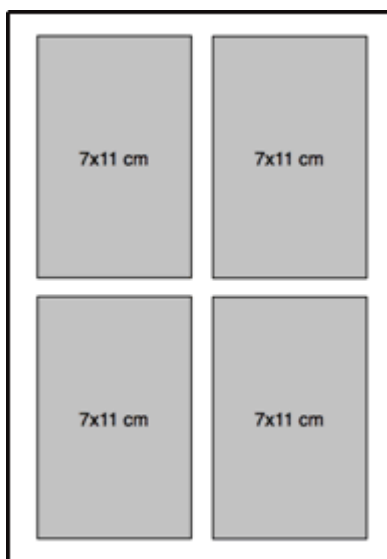
1 per page bordered



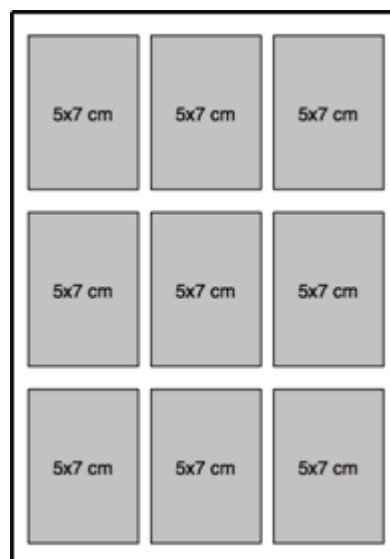
2 per page



3 per page



4 per page



9 per page

## Setting print options

Before you print photos, you may want to change the following default settings:

- Layout: Borderless
- Quantity: 1 print
- Colour: Colour print
- Quality: Normal
- Save settings: No

The Photo Print menu contains parameters that allow you to specify other options.

## Set number of prints

You can increase the number of prints of each photo from the Photo Print menu. The default is 1 print.

- 1 On the Print menu, select **Quantity**.
- 2 Press ◀ or ▶ to change the print quantity.
- 3 Press **OK** to set the selected layout and continue to set options, press **Photo** to preview or **Start** to print.

## Set Colour

You can print in colour or black and white. Printing in colour is the default.

- 1 On the Print menu, select **Colour**.
- 2 Press ◀ or ▶ to change the print colour.
- 3 Press **OK** to set the selected layout and continue to set options, press **Photo** to preview or **Start** to print.

## Set print quality

The Kodak EasyShare All-in-One provides three options that affect print speed and quality for plain paper. Print quality is automatically set to Kodak Picture Quality when photo paper is detected.

**Draft** Produces the fastest print speed but the lowest quality.

**Normal** Delivers high-quality output and is the default setting. Normal prints faster than Best.

**Best** Produces the highest quality for all paper and eliminates the banding (striping) effect that sometimes occurs in solid areas. Best is the slowest print speed.

- 1 On the Print menu, select **Quality**.
- 2 Press ◀ or ▶ to change the print quality.
- 3 Press **OK** to set the selected layout and continue to set options, press **Photo** to preview or **Start** to print.

## Save settings

When you change print settings from the control panel, the settings apply only to the current print job. To apply print settings to all future print jobs, you can save the changes you make.

- 1 On the Print menu, select **Save Settings**.
- 2 Press ◀ or ▶ to set to **Yes**.
- 3 Press **Photo** to preview or **Start** to print.

## Previewing photos

The Print Preview screen contains a crop box and displays the current photo number on the card or USB host device and the total number of photos on the card or device. It displays a checkbox indicating whether or not the currently displayed photo has been selected for printing. A checkmark is placed in the checkbox when the photo is selected, along with the number of copies to be printed. All photos selected are given the number of copies specified in the Quantity parameter on the Print menu by default. For example, if the Quantity parameter is set to 2, all selected photos are initially given a number-to-print value of 2.

Additionally, the Print Preview screen displays an icon of a printer and the total number of photos to be printed. For example, if you select two photos, each set to print two copies, the number next to the printer icon will be 4.

For every card/USB host session, a message is displayed the first time a photo is displayed instructing you to press ◀ and ▶ to view the photos and to press **OK** to select the photo for printing.

For every card/USB host session, a message appears the first time you select a photo for printing, instructing you to use ▲ and ▼ to change the number of photos to print.

## Preview mode

Preview mode allows you to select and edit photos for printing. If you press the **Start** button while in Preview mode, all the selected photos are printed. If there are no photos selected, then the photo displayed is printed. Print preview mode is entered when you insert a memory card or connect a camera or mass storage device, or from Print mode by pressing **Photo**.

The Preview screen displays the current photo inside a crop box. The crop box aspect ratio is 1.4:1.

At the bottom of the screen, the current photo number on the card or USB host device and the total number of photos is displayed. A checkbox indicates whether or not the currently displayed photo has been selected for printing. A checkmark is displayed in the checkbox if the photo has been selected, along with the number of copies to be printed to the left of the checkbox. All photos selected are given the number of copies specified in the Quantity parameter on the Print menu by default. For example, if the Quantity parameter is set to 2, all selected photos are initially given a number-to-print value of 2.

Additionally, the Print Preview screen displays an icon of a printer and the total number of photos to be printed. For example, if you select two photos, each set to print two copies, the number next to the printer icon will be 4.

**IMPORTANT:** Crop, zoom and quantity are per image, but layout is global, applying to all images.



## Zoom photos

- 1 Insert a memory card into the appropriate slot or a mass storage device into the USB port, or connect a digital camera to the USB port. The last photo is displayed.



- 2 Press **Zoom +** to enlarge the photo in .25X increments up to 5X magnification. Pressing **Zoom -** decreases magnification in .25X increments down to 1X.



- 3 Use the **4-way Navigation** button to display the part of the picture you want to print.



- 4 Press **OK** when finished. The photo is displayed with a crop box around the magnification and position you selected.



- 5 Press **▲** to select the number of prints and press **Start** to print the area displayed in the crop box.

## Multiview

The Multiview screen shows thumbnails of nine photos. The current photo number and the total photo number are also displayed.

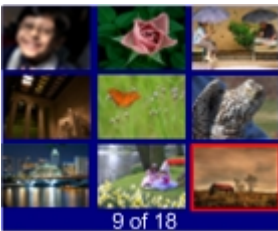
- 1 Insert a memory card into the appropriate slot or a mass storage device into the USB port, or connect a digital camera to the USB port. The last photo is displayed.



- 2 Press **Zoom -** to enter Multiview. The current photo is indicated by a red selection box.



- 3 Use the **4-way navigation** button to move the red selection box to another photo. Pressing **▶** when in the rightmost column displays the next Multiview screen. Pressing **◀** when in the leftmost column displays the previous Multiview screen.



- 4 Press **OK** to preview the selected photo



- 5 Press **Start** to print.



# 5 Copy

The Kodak AiO printer allows you to produce high-quality colour and black and white copies on a variety of paper types, including transparencies. Once copying has started, you may at any time abort a copy operation by pressing the **Cancel** button.

## Copy with control panel

Pressing **Copy** displays the Copy menu where you can set copy options, preview copies after scanning and make copies.

When copying from the control panel, you can choose from the following output options:

**Same Size:** The copy is the same size as the original. Cropping will occur if the original is larger than the paper size. The copy will contain white space if the original is smaller than the paper size. Same Size is the default copy setting.

**Fit to Page:** The image is copied and fit to the paper size loaded. There may be cropping on the sides or top/bottom depending on the difference in the aspect ratios of the image and the page size.

**Scale Percent:** The default copy scale is 100%; however you can scale copies from 10% to 500%. Scaling is anchored to the upper left-hand corner of the original.

**Photo Layouts:** You can set the layout for making copies of photos on your Kodak EasyShare All-in-One. The following layouts are supported:

Borderless (default)

Bordered

2 per page

3 per page

4 per page

9 per page

2x2 poster

3x3 poster

4x4 poster

## Fit to page copy

The image is copied and fitted to the paper size loaded. There may be cropping on the sides or top/bottom depending on the difference in the aspect ratios of the image and the page size.

- 1 Place your original face down on the rear left-hand corner of the scanner glass. If you have more than one plain paper original, place them face up in the automatic document feeder.



- 2 Press **Copy** to display the Copy menu.
- 3 Press **▼** to select **Output**.
- 4 Press **◀** or **▶** to select **Fit to Page**.
- 5 If desired, make changes to the following copy options with the Copy menu:
  - See *Set number of copies*
  - See *Set Colour*
  - See *Set quality*
  - See *Change brightness*
  - See *Set preview*
- 6 Press **Start**. If you turned preview on, the AiO printer enters Preview mode; otherwise it starts making copies.



## Scale percent copy

The default copy scale is 100%; however you can scale copies from 10% to 500%. Scaling is anchored to the upper left-hand corner of the original.

- 1 Place your original face down on the rear left-hand corner of the scanner glass. If you have more than one original, place them face up in the automatic document feeder.



- 2 Press **Copy** to display the Copy menu.
- 3 Press **▼** to select **Output**.
- 4 Press **◀** or **▶** to select **Scale Percent**.
- 5 Press **▼** to select **Size**.
- 6 Press **◀** or **▶** to change the scaling.
- 7 If desired, make changes to the following copy options with the Copy menu:
  - See *Set number of copies*
  - See *Set colour*
  - See *Set quality*
  - See *Change brightness*
  - See *Set preview*
- 8 Press **Start**. If you turned preview on, the AiO printer enters Preview mode; otherwise it starts making copies.

## Photo layout copy

You can set the layout for making copies of photos on your Kodak EasyShare All-in-One. The following layouts are supported:

- Borderless (default)
- Bordered
- 2 per page
- 3 per page
- 4 per page
- 9 per page
- 2x2 poster
- 3x3 poster
- 4x4 poster

- 1 Place your original face down on the rear left-hand corner of the scanner glass. If you have more than one original, place them face up in the automatic document feeder.



- 2 Press **Copy** to display the Copy menu.
- 3 Press ▼ to select **Output**.
- 4 Press ◀ or ▶ to select **Photo Layouts**.
- 5 Press ▼ to select **Size**.
- 6 Press ◀ or ▶ to change the layout.
- 7 If desired, make changes to the following copy options with the Copy menu:
  - See *Set number of copies*
  - See *Set quality*
  - See *Change brightness*
  - See *Set preview*
- 8 Press **Start**. If you turned preview on, the AiO printer enters Preview mode; otherwise it starts making copies.

## Setting copy options

You can set the following copy options with the control panel Copy menu:

- Quantity
- Colour
- Quality
- Output/Size (see *Same size copy*, *Fit to page copy*, *Scale percent copy* or *Photo layout copy*)
- Brightness
- Preview
- Save Settings

### Set number of copies

You can set the number of copies to make from the Copy menu. The default is 1 copy.

- 1 On the Copy menu, select **Quantity**.
- 2 Press or hold ◀ or ▶ to change the number of copies you want to make.
- 3 Press **OK** to set and continue setting options or **Start** to copy.

### Set Colour

You can make copies of documents in either colour or black and white. The default is colour.

- 1 On the Copy menu, press ▼ to select **Colour**.
- 2 Press ◀ or ▶ to change the copy colour.
- 3 Press **OK** to set and continue setting options or **Start** to copy.

### Set quality

Kodak picture quality is automatically selected when photo paper is detected in the main or photo input trays.

The Kodak EasyShare All-in-One provides three options that affect speed and quality for copying documents to plain paper.

**Best** Produces the highest quality for all paper and eliminates the banding (striping) effect that sometimes occurs in solid areas.

**Normal** Delivers high-quality output and is the default setting. Normal copies faster than Best.

**Draft** Produces the fastest copy speed but the lowest quality.

- 1 On the Copy menu, press ▼ until **Quality** is selected.
- 2 Press ◀ or ▶ to change the copy quality.
- 3 Press **OK** to set and continue setting options or **Start** to copy.

## Change brightness

You can change the brightness of copies, with -3 being the darkest and +3 the lightest.

- 1 If the Copy menu is not displayed, press **Copy**.
- 2 Press ▼ until **Brightness** is selected.
- 3 Press ◀ to darken or ▶ to lighten.
- 4 Press **OK** to set and continue setting options or **Start** to copy.

## Set preview

Copy Preview allows you to preview your originals before making copies. The Copy Preview screen shows the scanned image that you can zoom or crop (see *Zoom and crop*).

- 1 On the Copy menu, press ▼ until **Preview** is selected.
- 2 Press ◀ or ▶ to enable or disable **Preview**.
- 3 Press **OK** to set and continue setting options or **Start** to copy.

## Save copy settings

When you change copy settings from the control panel, the settings apply only to the current copy job. To apply copy settings to all future copy jobs, you can save the setting changes.

- 1 If the Copy menu is not displayed, press **Copy**.
- 2 Press ▼ until **Save Settings** is selected.
- 3 Press ◀ or ▶ to set save copy settings to **Yes**.

## Previewing copies

Copy Preview mode is entered when the following conditions exist:

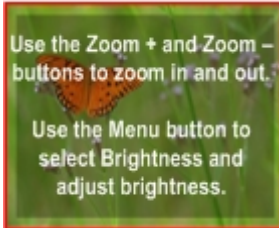
- The AiO printer is in Copy mode.
- Preview is set to **Yes**.
- The **Start** button is pressed.

The Copy Preview feature can be used for photos or documents.

## Zoom and crop

To zoom and crop a photo before making a copy, you must be in Preview mode (see Turning copy preview on).

- 1 With **Preview** set to **Yes** on the Copy menu, press **Start** to enter Preview mode. The photo on the glass is scanned and displayed with a crop box.



- 2 Press **Zoom +** to enlarge the photo in .25X increments up to 5X magnification. Pressing **Zoom -** decreases magnification in .25X increments down to 1X.



- 3 Use the **4-way navigation** button to display the part of the picture you want to copy.



- 4 Press **OK** or **Start** to copy.



# 6 Scan

You can start a scan from either the Kodak AiO control panel or your computer.

## Scan with control panel

Pressing **Scan** places the Kodak AiO printer in Scan mode and displays the Scan menu on the screen.

### Save scan settings

When you change scan settings from the control panel, the settings apply only to the current scan job. To apply scan settings to all future scan jobs, you can save your changes.

- 1 Press **Scan** to display the Scan menu.
- 2 Change the desired Scan settings.
- 3 Press ▼ until **Save Settings** is selected.
- 4 Press ◀ or ▶ to set save scan settings to **Yes**.

### Scanning photos

With the control panel Scan menu, you can scan photos to a file, application or memory card.

#### Scan to file

- 1 Place a photo or photos face down on the scanner glass.
- 2 Press **Scan** to display the Scan menu.
- 3 Press ◀ or ▶ to select **Photo**.
- 4 Press ▼ until **Scan To** is selected.
- 5 Press ◀ or ▶ to select **File**.
- 6 Press **Start**.

The document is scanned and saved based on the Kodak AiO Home Centre scan picture settings (see *Scan picture settings*).

## Scan to application

The Home Centre software enables you to maintain a list of scan destination applications.

- 1 Place a photo or photos face down on the scanner glass.
- 2 Press **Scan** to display the Scan menu.
- 3 Press ◀ or ▶ to select **Photo**.
- 4 Press ▼ to select **Scan To**.
- 5 Press ▶ to select **Application**.
- 6 Press ▼ to until **Application** is selected.
- 7 Press ◀ or ▶ to select another application.
- 8 Press **Start**.

## Scan to memory card

- 1 Insert a memory card into the appropriate card slot.



### **WARNING**

Never attempt to remove a memory card while it is being accessed. Doing so may damage files on the card. You can safely remove a card only when the status light next to the slots is not blinking.

- 2 Place a photo or photos face down on the scanner glass.
- 3 Press **Scan** to display the Scan menu.
- 4 Press ◀ or ▶ to select **Photo**.
- 5 Press ▼ to select **Scan To**.
- 6 Press ◀ or ▶ to select **Memory Card**.
- 7 Press **Start**.



## Scanning documents

With the control panel Scan menu, you can scan documents to a file, application or memory card.

### Scan to file

- 1 Load your original face down on the rear left-hand corner of the scanner glass. If you have more than one original, load them face up in the automatic document feeder.



- 2 Press **Scan** to display the Scan menu.
- 3 Press ◀ or ▶ to select **Document**.
- 4 Press **Start**.

The document is scanned and saved based on the Kodak AiO Home Centre scan document settings (see *Scan document settings*).

## Scan to application

- 1 Load your original face down on the rear left-hand corner of the scanner glass. If you have more than one original, load them face up in the automatic document feeder.



- 2 Press **Scan** to display the Scan menu.
- 3 Press **◀** or **▶** to select **Document**.
- 4 Press **▼** to select **Scan To**.
- 5 Press **◀** or **▶** to select **Application**.
- 6 Press **▼** to until **Application** is selected.
- 7 Press **◀** or **▶** to select another application.
- 8 Press **Start**.

## Scan to memory card

- 1 Insert a memory card into the appropriate card slot.



### WARNING

Never attempt to remove a memory card while it is being accessed. Doing so may damage files on the card. You can safely remove a card only when the status light next to the slots is not blinking.

- 2 Load your original face down on the rear left-hand corner of the scanner glass.



- 3 Press **Scan** to display the Scan menu.
- 4 Press ◀ or ▶ to select **Document**.
- 5 Press ▼ to select **Scan To**.
- 6 Press ◀ or ▶ to select **Memory Card**.
- 7 Press **Start**.



# 7 Fax

You can use your Kodak AiO printer to send and receive faxes, including colour faxes. You can set up speed dials to send faxes quickly and easily to frequently used numbers. From the control panel, you can also set a number of fax options.

## Fax functionality

You can use your Kodak AiO printer to send and receive faxes, including colour faxes. You can set up speed dials to send faxes quickly and easily to frequently used numbers. From the control panel, you can also set a number of fax options. When using the Automatic Document Feeder, you can scan up to 35 pages to send as a fax. The AiO can receive up to 100 pages.

The Fax menu allows you to enter a fax number to dial and make changes to default settings. When you enter a number using the numeric keypad, it is displayed at the top of the screen.

The comma (,) character is used to insert a delay in the dialling sequence. Each comma (,) delays dialling by 2 seconds.

## Print fax cover page

You can print a fax cover page with pre-configured information printed on the page (if the data is available) and with the day and date filled in.

- 1 Press **Menu** to display the main menu.
- 2 Press ▼ until **Print Fax Cover Page** is selected.
- 3 Press **Start**.

## Print fax activity report

- 1 Press **Menu** to display the main menu.
- 2 Press ▼ until **Print Fax Activity Report** is selected.
- 3 Press **Start**.

## Setting fax options

The Fax menu allows you to set the following fax options:

- Resolution
- Colour
- Brightness

Additional fax options are available from the Main menu:

- Ans. Machine Mode
- Rings to Answer
- Busy Redial Attempts
- Redial if No Answer
- Fax Speaker
- Print Fax Confirmation Page
- Dialling Mode
- Disable Call Waiting
- Error Correction
- Fax Speed

## Setting with control panel

You can set up fax options with AiO control panel menus.

### Fax send options

You can set the following options for sending a fax:

- Set fax resolution
- Set colour
- Set Brightness

### Set fax resolution

The Resolution setting affects the transmission speed and quality of faxed documents and photos. The following resolution settings are available:

**Standard** Provides the fastest possible fax transmission with the lowest quality. This is the default setting.

**Fine** Provides high-quality text suitable for faxing most documents.

**Photo** Provides the best quality fax when sending photographs. If you choose Photo, be aware that the faxing process takes longer to complete.

- 1 Press **Fax**. The Fax menu is displayed with **Resolution** selected.
- 2 Press ◀ or ▶ to change the resolution.
- 3 Press **OK** to set and continue setting options or **Start** to fax.

## Set colour

You can send faxes in colour or black and white (default).

- 1 Press **Fax** to display the Fax menu.
- 2 Press ▼ until **Colour** is selected.
- 3 Press ◀ or ▶ to change the fax colour.
- 4 Press **OK** to set and continue setting options or **Start** to fax.

## Set brightness

You can make faxes lighter or darker using the brightness command on the Fax menu. The default is 0, with -3 the darkest and +3 the lightest.

- 1 Press **Fax** to display the Fax menu.
- 2 Press ▼ until **Brightness** is selected.
- 3 Press ◀ or ▶ to change the fax brightness level.
- 4 Press **OK** to set and continue setting options or **Start** to fax.

## Save settings

When you change fax settings from the control panel, the settings apply only to the current fax job. To apply fax settings to all future fax jobs, you can save your changes.

- 1 Press **Fax** to display the Fax menu.
- 2 Press ▼ until **Save Settings** is selected.
- 3 Press ◀ or ▶ to set **Save Settings** to **Yes**.
- 4 Press **OK** to set and continue setting options or **Start** to fax.

## Fax set-up options

The following set-up options are available for setting up your Kodak AiO Printer to send and receive faxes.

- Answering Machine Mode
- Rings to Answer
- Busy Redial Attempts
- Redial If No Answer
- Fax Speaker
- Print Fax Confirmation Page
- Dialling Mode
- Disable Call Waiting
- Error Correction
- Fax Speed

## Answering machine mode

Your Kodak EasyShare AiO can be set up to receive faxes with or without an answering machine connected. Refer to the table below to determine how you should set up your EasyShare AiO to answer incoming fax calls based on your home or office set-up. The first column in the table lists the type of phone line equipment and services. The second column lists the appropriate Answering Machine Mode setting. The third column describes how the EasyShare AiO will answer incoming calls.

Equipment/services sharing your fax line	Recommended Answering Machine Mode setting	Description
None. (You have a separate fax line on which you receive only fax calls).	NO	The EasyShare AiO automatically answers all incoming calls using the Rings to Answer setting. For more information on setting the number of rings, see <i>Set Rings to Answer</i> .
A shared voice and fax line and no answering machine. (You have a shared phone line on which you receive both voice and fax calls).	NO	The EasyShare AiO automatically answers all incoming calls using the Rings to Answer setting. For more information on setting the number of rings, see <i>Set Rings to Answer</i> .
An answering machine and a shared voice and fax line.	YES	The EasyShare AiO will not automatically answer calls. Instead, the answering machine will answer the call and the EasyShare AiO will monitor the line. If the EasyShare AiO detects fax tones, the EasyShare AiO will receive the fax. If the call is a voice call, the EasyShare AiO ignores the call.  This is the recommended default setting if you have an answering machine. Make sure the answering machine is set up properly with the EasyShare AiO.

### To enable or disable answering machine mode:

- 1 Press **Menu** to display the main menu.
- 2 Press **▼** until **Fax Settings** is displayed.
- 3 Press **OK**. The first page of the Adjust Fax Settings menu is displayed with **Ans. Machine Mode** selected.
- 4 Press **◀** and **▶** to select **Yes** or **No**.

### Rings to answer

You can specify how many rings should occur before your Kodak EasyShare AiO automatically answers an incoming call (default = 4). If you have a dedicated fax line, set the Rings to Answer to 1 or 2. If you have a shared line for voice/modem and fax, set the Rings to answer to 3, 4 or 5. This setting only applies if Answering Machine Mode is set to OFF.

When Answering Machine mode is disabled, Rings to Answer applies and your AiO printer answers the call. When your AiO printer detects a fax tone, it receives the fax. When a voice call is received (no fax tone), the call is ignored.



- 1 Press **Menu** to display the main menu.
- 2 Press ▼ until **Fax Settings** is displayed.
- 3 Press **OK** to display the Adjust Fax Settings menu.
- 4 Press ▼ until **Rings to Answer** is selected.
- 5 Press ◀ or ▶ to change the number of rings.

### Busy redial attempts

You can set your Kodak AiO printer to redial a busy number from 0 to 14 times. The default number of attempts is 5.

- 1 Press **Menu** to display the main menu.
- 2 Press ▼ until **Fax Settings** is displayed.
- 3 Press **OK** to display the Adjust Fax Settings menu.
- 4 Press ▼ until **Busy Redial Attempts** is selected.
- 5 Press ◀ or ▶ to select the number of redial attempts.

### Redial if no answer

You can set your Kodak AiO printer to redial an unanswered number automatically. The default setting is **Yes**. When set to **Yes**, the AiO redials once when there is no answer.

- 1 Press **Menu** to display the main menu.
- 2 Press ▼ until **Fax Settings** is displayed.
- 3 Press **OK** to display the Adjust Fax Settings menu.
- 4 Press ▼ until **Redial if No Answer** is selected.
- 5 Press ◀ or ▶ to enable or disable Redial if No Answer.

### Fax speaker

Your Kodak AiO printer provides a speaker for hearing dial tones. The default setting is **On**. The fax speaker allows you to hear dialling and fax negotiation. When the AiO is ready to send the fax, the speaker turns off. This allows you to hear if you dialled a voice line by accident.

- 1 Press **Menu** to display the main menu.
- 2 Press ▼ until **Fax Settings** is displayed.
- 3 Press **OK** to display the Adjust Fax Settings menu.
- 4 Press ▼ until **Fax Speaker** is selected.
- 5 Press ◀ or ▶ to enable or disable fax speaker.

### Print fax confirmation page

Your Kodak AiO printer can print a confirmation that a fax was sent successfully. The default setting is **No**.

- 1 Press **Menu** to display the main menu.
- 2 Press **▼** until **Fax Settings** is displayed.
- 3 Press **OK** to display the Adjust Fax Settings menu.
- 4 Press **▼** until **Print Fax Confirmation Page** is selected.
- 5 Press **◀** or **▶** to enable or disable confirmation page printing.

### Dialling mode

You can set the dial mode for your Kodak EasyShare All-in-One to either tone dialling or pulse dialling. The default setting is Tone Dialling. Most telephone systems work with either type of dialling. If your telephone system does not require pulse dialling, we recommend using tone dialling. Contact your local telephone company if you are unsure which setting to use.

NOTE: If you select Pulse Dialling, some phone system features might not be available. It can also take longer to dial a fax or phone number.

- 1 Press **Menu** to display the main menu.
- 2 Press **▼** until **Fax Settings** is displayed.
- 3 Press **OK** to display the Adjust Fax Settings menu.
- 4 Press **▼** until **Dialling Mode** is selected.
- 5 Press **◀** or **▶** to select **Tone** or **Pulse**.

### Disable Call Waiting

By default, your AiO printer is set to keep your phone line's call waiting feature enabled when sending a fax (set to **No**). If you have a shared voice/fax line, the call waiting notification tone can cause errors in an outgoing fax. To prevent an incoming call from causing errors on an outgoing fax, set Disable Call Waiting to **Yes**. When Disable Call Waiting is set to **Yes**, your AiO printer temporarily disables call waiting by inserting **\* 70** before the dialled number. The **\* 70** sequence is used by most carriers in the United States to temporarily disable call waiting. If your carrier does not use **\* 70** to temporarily disable call waiting, keep Disable Call Waiting set to **No**.

- 1 Press **Menu** to display the main menu.
- 2 Press **▼** until **Fax Settings** is displayed.
- 3 Press **OK** to display the Adjust Fax Settings menu.
- 4 Press **▼** until **Disable Call Waiting** is selected.
- 5 Press **◀** or **▶** to set Disable Call Waiting to **Yes** or **No**.

## Error correction

When error correction mode is enabled, it eliminates data that is lost due to poor phone lines by detecting errors that occur during transmission and automatically requesting re-transmission of the erroneous portion. On poor phone lines, error correction mode increases sending time but sends the data much more reliably. The default setting is **Off**. Turn error correction **On** only if you can accept poorer quality faxes. If you turn error correction **On**, this only affects black and white faxes that you send; it does not affect faxes that you receive. If you are having problems sending faxes, you can also adjust the fax speed to see if this solves the problem. For more information on fax speed, see *Fax speed*.

- 1 Press **Menu** to display the main menu.
- 2 Press **▼** until **Fax Settings** is displayed.
- 3 Press **OK** to display the Adjust Fax Settings menu.
- 4 Press **▼** until **Error Correction** is selected.
- 5 Press **◀** or **▶** enable or disable Error Correction.

## Fax speed

You can set the fax speed used to communicate between your Kodak EasyShare All-in-One and other fax machines when sending and receiving faxes. The default fax speed is Fast (33.6K).

If you experience problems sending and receiving faxes, you might want to try setting the fax speed to 14.4K Baud (v.37) or 9.6K Baud (v.29).

- 1 Press **Menu** to display the main menu.
- 2 Press **▼** until **Fax Settings** is displayed.
- 3 Press **OK** to display the Adjust Fax Settings menu.
- 4 Press **▼** until **Fax Speed** is selected.
- 5 Press **◀** or **▶** change the fax speed.

## Sending a fax

You can send a fax by dialling the number using the control panel keypad with redial, speed dial or phonebook.

## Send a Basic Fax

You can send a fax by using the control panel.

- 1 Place your originals face up in the Automatic Document Feeder.
- 2 Press **Fax** to display the Fax menu.
- 3 Set fax options. See *Setting Fax Options*.
  - Fax Resolution
  - Color or Black & White
  - Fax Brightness
- 4 Enter the fax number with the keypad.
- 5 Press **Start**.

## Send a fax with speed dial

You can quickly send a fax from the Kodak EasyShare AiO using speed dials. Speed dial entries will not appear until you have set them up with the Home Centre software.

- 1 Place your originals face up in the automatic document feeder.
- 2 Press **Fax** to display the Fax menu.
- 3 Set fax options. See *Setting fax options*.
  - Fax resolution
  - Colour or Black & White
  - Fax brightness
- 4 Press one of the three speed dial buttons.
- 5 Press **Start**.

## Send a fax with phonebook

You can access the Phonebook from either the Fax menu or the Phonebook button on the Control Panel. You can create phonebook entries with Home Centre software.

- 1 Place your originals face up in the automatic document feeder.
- 2 Press **Fax** to display the Fax menu.
- 3 Set fax options. See *Setting fax options*.
  - Fax resolution
  - Colour or Black & White
  - Fax brightness
- 4 Press **Phonebook** to display the Phonebook menu.
- 5 Press ▼ until the entry you want to fax is selected.
- 6 Press **Start**. The AiO printer dials the number of the selected entry and, once connected, scans the pages to be faxed.

## Receiving a fax

If you receive a legal-size fax and your EasyShare AiO is not currently set to use legal-size paper, the device automatically reduces the fax so that it fits on the paper that is loaded.



# 8

## Maintenance

The Kodak EasyShare All-in-One requires little maintenance. However, you should clean the glass and lid backing to remove dust and fingerprints.

Fingerprints and other debris on the glass or lid backing could slow down performance and affect the accuracy of scanning.

This section covers the Settings menu, printhead installation, printhead calibration, checking ink levels and changing ink cartridges.

### General care

**IMPORTANT:** Always disconnect the power before cleaning. Do not use harsh or abrasive cleaners or organic solvents on the AiO printer or any of its parts.



#### **WARNING**

Do not leave items on the scanner glass. The heat of the scanning lamp may cause them to stick.

- To clean, wipe the outside of the AiO printer and LCD with a clean, dry cloth.
- Keep the surrounding area vacuumed and litter-free.
- Protect the AiO printer from tobacco smoke, dust, sand and liquid spillages.
- Avoid placing objects on the AiO printer.
- Keep the AiO printer, accessories and supplies away from direct sunlight and out of high-temperature environments.
- Do not allow chemicals, such as suntan lotion, to come into contact with the painted surface of the AiO printer.
- If the AiO printer has been subjected to inclement weather or you suspect water has got inside the AiO printer, turn it off and let it dry out. If this does not resolve the problem, contact customer support (see *Telephone customer support*).
- Service agreements are available in some countries. Contact a dealer of Kodak products for more information.
- For more disposal or recycling information, contact your local authorities. In the US, visit the Electronics Industry Alliance website at [www.eiae.org](http://www.eiae.org).

## Clean the scanner glass

To ensure that your copies and scans remain clear, keep the scanner glass and lid backing clean and dust the exterior.

- 1 Turn off the AiO printer and raise the lid.
- 2 Clean the glass with a soft cloth or sponge slightly moistened with a non-abrasive glass cleaner.



### WARNING

Do not use abrasives, acetone, benzene or carbon tetrachloride on the glass, as they can damage it. Do not place or spray liquid directly on the glass. The liquid might seep under the glass and damage the device.

- 3 Dry the glass with a lint-free cloth.

## Clean the scanner lid

Minor debris can accumulate on the document backing located underneath the scanner lid of the Kodak AiO printer.

- 1 Turn off the AiO printer and raise the lid.
- 2 Clean the lid underside with a soft cloth or sponge slightly moistened with a mild soap and warm water.
- 3 Wipe the underside gently to loosen debris. Do not scrub.
- 4 Dry the underside with a chamois or soft cloth.



### WARNING

Do not use paper-based wipes, as these might scratch the underside.

- 5 If further cleaning is needed, repeat the previous steps using isopropyl (rubbing) alcohol and wipe the underside thoroughly with a damp cloth to remove any residual alcohol.

## Format memory card

Formatting will erase all the data on a memory card.

- 1 Insert a memory card into the appropriate slot.
- 2 Press **Menu**.
- 3 Press **▼** until **Format Memory Card** is selected.
- 4 Press **OK**.
- 5 Press **Start** to begin formatting.




## Print diagnostic sheet

The diagnostic page contains information about your printer that can be useful when contacting Kodak support.

- 1 Press **Menu**.
- 2 Press ▼ until **Print Diagnostic Sheet** is selected.
- 3 Press **OK**.
- 4 Press **Start** to begin printing.

## Firmware upgrade

You can update the firmware in your AiO printer with the most recent available from the Home Centre software. This requires an Internet connection.

- 1 Click the Help button  to open the Help panel.
- 2 Under **General Links**, click **Maintenance**.
- 3 Click **Firmware Upgrade**.

## Ink cartridges

Your Kodak AiO printer uses separate black and colour ink cartridges. The ink levels are displayed on the control panel and the printer software. Generic or non-Kodak ink cartridges may not function in the KODAK EASYSHARE All-in-One Printer. Kodak recommends using Kodak ink cartridges.

## Check ink levels

You can easily check the ink levels to determine how soon you might need to replace an ink cartridge. The ink level supply screen shows the amount of ink remaining in the ink tanks.

- 1 Press **Menu** to display the main menu.
- 2 Press ▼ until **Ink Levels** is selected.
- 3 Press **OK** to display the Ink Levels screen.



The Ink Levels screen shows ink levels in a vertical gauge format with one gauge for the Black Ink cartridge and one gauge for the Colour Ink cartridge.

## Replace ink cartridges

A Low Ink warning message is displayed when one of the ink levels drops below 20 percent.

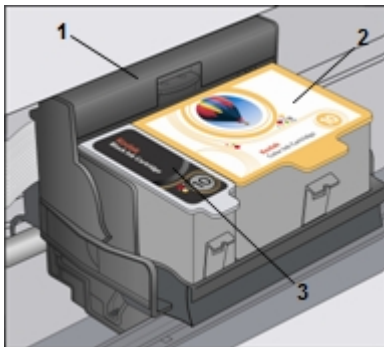
NOTE: For the best quality prints, store ink cartridges in a location where the temperature does not exceed 30°C (85°F).



### WARNING

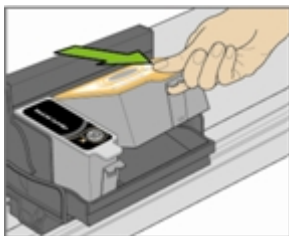
or non-Kodak ink cartridges may not function in the KODAK EASYSHARE All-in-One Printer. Kodak recommends using Kodak ink cartridges. Third party ink cartridges may not contain the necessary Smart Chip information to notify you before the ink cartridge is empty.

- 1 Open the printer access door by lifting from the front centre of the unit. The ink cartridges are located in the printhead.



- 1 Printhead
- 2 Colour ink cartridge
- 3 Black ink cartridge

- 2 Wait until the printhead is idle and silent, then pinch the pinch latch on the old ink cartridge with your thumb and forefinger and lift it out of the printhead.



- 3 Open the box of the new ink cartridge.

- 4 Remove the bagged ink cartridge from the box and tear open the bag at the notch and remove the ink cartridge.

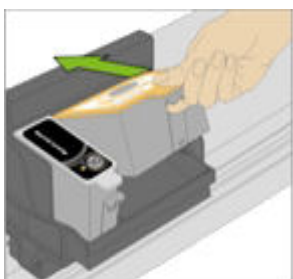
**IMPORTANT:** Insert the ink cartridge immediately to prevent any drying of the ink.



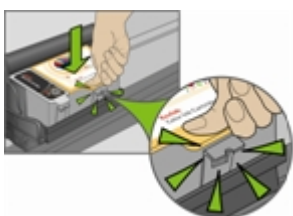
- 5 Remove the orange cap from the cartridge by grasping the top edge and pulling/rotating it off the ink cartridge.



- 6 Slide the ink cartridge into the printhead.



- 7 Press down on the tab until you hear a click and feel the latch snap into position.



- 8 Close the printer access door.

## Printhead

The printhead dispenses the ink from the ink cartridges onto the paper. Printer maintenance involves:

- Calibration
- Clean the printhead


### Calibration

The Kodak AiO printer performs a calibration every time you install or replace a printhead. However, you can run a calibration if you are seeing changes in the image quality. Calibration aligns the printheads and performs a nozzle health check to enable high-quality prints.

#### To calibrate from computer

- 1 Load the main tray or photo tray with photo paper.

**IMPORTANT:** If you don't have any photo paper, you can use plain paper, but photo paper is highly recommended for calibrations.

- 2 Start the AiO Home Centre.
- 3 Click  to open the Help panel.
- 4 Under **General Links**, click **Maintenance**.
- 5 Click **Calibration** to make a calibration print.
- 6 Follow the instructions on the calibration print to calibrate the printer.

#### To calibrate from control panel

- 1 Load the main tray or photo tray with photo paper.


**IMPORTANT:** If you don't have any photo paper, you can use plain paper, but photo paper is highly recommended for calibrations.

- 2 Press **Menu**.
- 3 Press **▼** until **Calibrate Printer** is selected.
- 4 Press **OK**. A new screen appears with **Print Calibration Page** selected.
- 5 Press **Start** and follow the instructions on the LCD screen to complete the calibration.

### Clean Printhead

If you notice degradation in the quality of prints, the printhead may need cleaning.

#### To clean printhead from computer

- 1 Start the AiO Home Centre.
- 2 Click  to open the Help panel.
- 3 Under **General Links**, click **Maintenance**.
- 4 Click **Printhead Cleaning**.

### To clean printhead from control panel

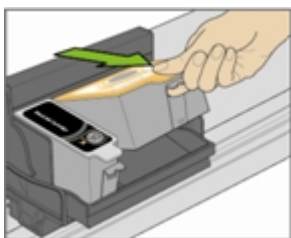
- 1 Press **Menu** to display the main menu.
- 2 Press **▼** until **Clean Printhead** is selected.
- 3 Press **OK** to go to the Clean Printhead menu.
- 4 Press **OK** to perform a **Basic Clean**.  
or  
Press **▼** to select **Deep Clean** and press **OK** to perform a Deep Clean.

### Replace printhead

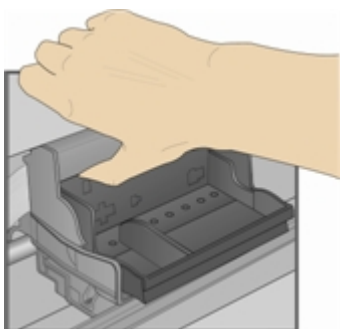
- 1 Make sure the AiO printer is on.
- 2 Open the printer access door. The carriage moves to a centre position.



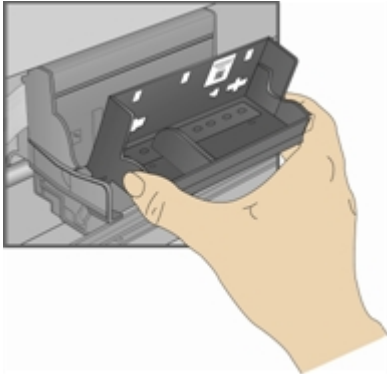
- 3 Wait until the printhead is idle and silent, then pinch the pinch latch on the ink cartridge with your thumb and forefinger and lift it out of the print head. Remove both ink cartridges and place them on a flat surface with the ink pads up.



- 4 Unlatch the printhead by pressing the button in the upper left-hand corner of the carriage.



- 5** Remove the old printhead.



- 6** Remove the new printhead from its bag.



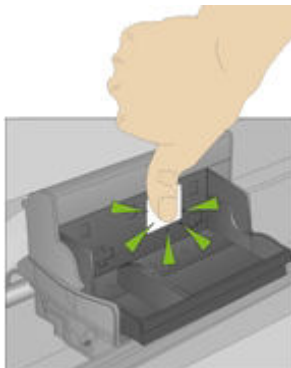
- 7** Remove and discard the plastic casing and the orange protective cap.



- 8** Place the printhead into the carriage.



- 9** Push against the back wall of the printhead until it clicks into place.



**10** Reinstall the ink cartridges.





# 9 Support

If you have a problem with your AiO printer, refer to the troubleshooting topics in this book. Additional technical information is available in the ReadMe file located on the Kodak EasyShare software CD. For online support, visit [www.kodak.com/go/support](http://www.kodak.com/go/support).

## Contact Kodak

<b>Kodak</b>	Resource Centre	<a href="http://www.kodak.com/go/resourcecenter">www.kodak.com/go/resourcecenter</a>
<b>Printer</b>	Get support for your product (FAQs, troubleshooting information etc.).	<a href="http://www.kodak.com/go/support">www.kodak.com/go/support</a>
	Purchase full range of digital camera and printer accessories.	<a href="http://www.kodak.com/go/accessories">www.kodak.com/go/accessories</a>
	Download latest printer software, firmware and drivers.	<a href="http://www.kodak.com/go/downloads">www.kodak.com/go/downloads</a>
	Online tutorials	<a href="http://www.kodak.com/go/howto">www.kodak.com/go/howto</a>
<b>Software</b>	Get information on EasyShare software.	<a href="http://www.kodak.com/go/easysharesw">www.kodak.com/go/easysharesw</a> (or click the Help button in the EasyShare software)
	Get help with the Windows operating system and working with digital pictures.	<a href="http://www.kodak.com/go/pcbasics">www.kodak.com/go/pcbasics</a>
<b>Other</b>	Get support for Kodak printers, cameras, software, accessories and more. Print a diagnostics page before contacting Kodak support (see <i>Print diagnostic sheet</i> in the Maintenance chapter).	<a href="http://www.kodak.com/go/support">www.kodak.com/go/support</a>
	Register your printer.	<a href="http://www.kodak.com/go/register">www.kodak.com/go/register</a>

## Limited warranty

Kodak warrants Kodak consumer electronic products and accessories ("Products"), excluding batteries, to be free from malfunctions and defects in both materials and workmanship for one year from the date of purchase.

Retain the original dated sales receipt. Proof of the date of purchase will be required with any request for warranty repair.

## Limited warranty coverage

Warranty service is only available from within the country where the Products were originally purchased. You may be required to ship Products, at your expense, to the authorised service facility for the country where the Products were purchased.

Kodak will repair or replace Products if they fail to function properly during the warranty period, subject to any conditions and/or limitations stated herein. Warranty service will include all labour as well as any necessary adjustments and/or replacement parts. If Kodak is unable to repair or replace a Product, Kodak will, at its option, refund the purchase price paid for the Product provided the Product has been returned to

Kodak along with proof of the purchase price paid. Repair, replacement or refund of the purchase price are the sole remedies under this warranty.

If replacement parts are used in making repairs, those parts may be remanufactured or may contain remanufactured materials. If it is necessary to replace the entire Product, it may be replaced with a remanufactured Product. Remanufactured Products, parts and materials are warranted for the remaining warranty term of the original Product, or 90 days after the date of repair or replacement, whichever is longer.

## Limitations

This warranty does not cover circumstances beyond Kodak's control. This warranty does not apply when failure is due to shipping damage, accident, alteration, modification, unauthorised service, misuse, abuse, use with incompatible accessories or attachments (such as third party ink or ink tanks), failure to follow Kodak's operation, maintenance or repacking instructions, failure to use items supplied by Kodak (such as adaptors and cables), or claims made after the duration of this warranty.

KODAK MAKES NO OTHER EXPRESS OR IMPLIED WARRANTY FOR THIS PRODUCT AND DISCLAIMS THE IMPLIED WARRANTIES OF MERCHANTABILITY AND FITNESS FOR A PARTICULAR PURPOSE. In the event that the exclusion of any implied warranty is ineffective under law, the duration of the implied warranty will be one year from the purchase date or such longer period as required by law.

The option of repair, replacement or refund is Kodak's only obligation. Kodak will not be responsible for any special, consequential or incidental damages resulting from the sale, purchase or use of this product regardless of the cause. Liability for any special, consequential or incidental damages (including but not limited to loss of revenue or profit, downtime costs, loss of the use of the equipment, cost of substitute equipment, facilities or services, or claims from your customers for such damages resulting from the purchase, use or failure of the Product), regardless of cause, or for breach of any written or implied warranty is expressly disclaimed.

## Your rights

Some states or jurisdictions do not allow exclusion or limitation of incidental or consequential damages, so the above limitation or exclusion may not apply to you. Some states or jurisdictions do not allow limitations on how long an implied warranty lasts, so the above limitation may not apply to you.

This warranty gives you specific rights and you may have other rights which vary from state to state or by jurisdiction.

## Outside the United States and Canada

In countries other than the United States and Canada, the terms and conditions of this warranty may be different. Unless a specific Kodak warranty is communicated to the purchaser in writing by a Kodak company, no warranty or liability exists beyond any minimum requirements imposed by law, even though defect, damage or loss may be by negligence or other act.

EASTMAN KODAK COMPANY

Rochester, NY 14650

U.S.A.

© Eastman Kodak Company, 2006 MC/MR/TM: Kodak Printed in China

## Telephone customer support

If you have questions concerning the operation of your EasyShare software, Home Centre software or AiO printer, you may speak with a customer support representative. When you call, please have the following information available:

- Computer model, operating system
- Processor type and speed (MHz)
- Amount of memory (MB) and free hard disk space
- Printer serial number
- Version of Kodak EasyShare software
- Version of Kodak Home Centre software
- Print a diagnostics page
- Exact error message you received
- Your unit's Kodak service number (under the printer access door).



## Customer support phone numbers

Australia	1 800 793 895
Austria	0179 567 357
Belgium	02 713 14 45
Brazil	1 800 891 4213
Canada	1 800 465 6325
Denmark	3 848 71 30
Finland	0800 1 17056
France	01 55 1740 77
Germany	069 5007 0035
International Toll Fax	+44 131 458 6962
International Toll Line	+44 131 458 6714
Ireland	01 407 3054
Italy	02 696 33452
Japan	03 5540 9002
Mexico	01 800 288 56325
Netherlands	020 346 9372
New Zealand	0800 880 175
Norway	23 16 21 33
Portugal	021 415 4125
Spain	91 749 76 53
Sweden	08 587 704 21
Switzerland	01 838 53 51
UK	0870 243 0270
US (toll-free) / (toll)	1 800 421 6699

Visit [www.kodak.com/go/dfiswwcontacts](http://www.kodak.com/go/dfiswwcontacts).

## Troubleshooting

### AiO fails to power on

The power supply is not properly connected.

- 1 Make sure the power lead is connected to the power supply and plugged into an earthed power outlet or power strip.
- 2 If you are using a power strip, make sure it is turned on.
- 3 If you are using a switched power outlet, make sure the switch is on.
- 4 Make sure the power outlet is supplying power.
- 5 If none of the above corrects the problem, contact Kodak support.

## Bluetooth device not recognised

### Probable cause 1

The internal Bluetooth radio in the device may be turned off.

### Corrective action

Make sure the device is on and within range of the Bluetooth radio signal (10 metres or 30 feet).

NOTE: The Bluetooth technology-enabled device must use a BIP, OPP or FTP profile.

### Probable cause 2

Sending device requires a PIN.

### Corrective action

Enter a PIN of 1111 into the sending device.

## Device not recognised

Any of the following can prevent your Kodak AiO printer from reading a connected digital camera or memory card.

- The camera is turned OFF.
- The USB connector from the camera is not fully inserted in the port.
- The memory card is not completely inserted.
- The memory card is in backwards.
- The memory card file system is corrupt.

Correct any connection problems and try again.

If the memory card file system is corrupt, reformat it in your camera.

## Ink cartridge

### Colour/Black cartridge not recognised

The ink cartridge installed was not recognised. Generic or non-Kodak ink cartridges may not function in the KODAK EASYSHARE All-in-One Printer. Kodak recommends using Kodak ink cartridges. To correct the problem, install a genuine Kodak ink cartridge.

### Ink cartridge out of ink

One of the ink cartridges has reached the end of its life and needs to be replaced.

To correct the problem, replace the empty ink cartridge.

## Multiple paper feed

Multiple sheets of paper are pulled through the printer.

- 1 Disengage the photo tray.
- 2 Remove the paper from the paper tray(s). Carefully "fan" the paper to keep the sheets from sticking together.
- 3 Reload the paper tray(s). Do not overfill.
- 4 Re-engage the photo tray, then press **Start** to resume printing.

## No communication with computer

Your AiO printer is not connected to your computer.

- 1 Make sure you are using a 2.0 USB cable.



- 2 Check the connection from your computer to your AiO printer. Ensure that the square end of the USB cable is plugged in to the USB port on the back of your AiO printer and the flat end into a USB port on your computer.



- 3 You may need to disconnect other printers or scanners from your computer.
- 4 After checking connections, restart your computer.
- 5 Make sure your computer meets the minimum system requirements. Upgrade your system if necessary.

For more information on connecting your Kodak AiO printer to your computer, see the Set-up Poster that came with your unit.

## No paper feed

Paper does not feed. You may have a message on the display on the printer and/or in the Status Monitor on your computer.

**IMPORTANT:** For best results, use only Kodak ink cartridges and paper for your printer.

The paper tray(s) may be empty. Load paper into the paper tray(s), then press **Start**.

### Check the paper.

- 1 Disengage the photo tray.
- 2 Inspect the paper and make sure no sheets are damaged in any way. Reload with new paper if necessary.
- 3 Carefully "fan" the paper to keep the sheets from sticking together.

- 4 Reload the paper tray(s). Do not overfill.
- 5 Engage the photo tray, if printing 150 x 100 mm (6 x 4") photos, then press **Start** to resume printing.

## Paper jam

The paper did not advance or was not picked properly from the paper tray.

- 1 Open the paper trays and remove the paper supply.
- 2 Press in the latches on the rear access door and remove it.



- 3 Pull the paper out from the rollers without tearing it.

**IMPORTANT:** If the paper tears while you are removing it, check inside the AiO for torn pieces of paper and remove them. More jams are likely to occur if all the torn pieces are not removed.

- 4 Replace the rear access door by pressing it in until it latches into place.



- 5 Reload the paper tray(s). Do not overfill.
- 6 Re-engage the photo tray if desired.

## Printer not responding

**If you receive a Printer not Responding message**

- 1 Turn the printer off and turn it back on.
- 2 If the problem still persists, unplug the power lead from the power supply and plug it back in.
- 3 If the problem persists, restart your computer.

## Transfer pictures failure

Nothing happens when you try to transfer pictures to the computer.

- 1 Press the Transfer button on the printer.

- 2 Check the power and USB connections from the printer to the computer.
- 3 If you are trying to transfer pictures from a memory card and a PictBridge camera is connected, remove it.
- 4 Close unnecessary software applications and minimise remaining application windows. Follow any messages on the screen that may have been hidden by other windows.
- 5 Disconnect then reconnect the USB cable from the printer to the computer.
- 6 Make sure you are using a 2.0 USB cable.
- 7 Make sure Kodak EasyShare software is installed. Install if necessary. If you choose Custom installation, make sure you install the printer driver.
- 8 Uninstall and then reinstall Kodak EasyShare software.
- 9 Make sure your computer meets the minimum system requirements. Upgrade your system if necessary.

NOTE: The Kodak AiO printer is compatible with the Kodak 8-in-1 card reader (sold separately). Other Kodak USB card readers may work with the printer; however, other manufacturers' card readers are not supported.

## Wrong paper size

The paper you selected does not match the active paper tray. The paper selected may be larger or smaller than the paper found in the paper tray.

- 1 Replace the paper in the paper tray with the correct type.
- 2 Press **OK** to continue or **Cancel** to exit.

## Print troubleshooting

### Envelope printing incorrect

The envelopes are not loaded correctly.

- 1 Remove the envelopes from the main paper tray.
- 2 Straighten the stack of envelopes against a flat surface and reload it into the main paper tray.
- 3 Slide the paper-width and paper-length guides inwards until they stop at the edges of the envelopes.

### Multiple-page document in reverse order

The printing settings are set to print the first page of your document first.

Print the document in reverse order so the pages will be in the correct order when printing finishes.

- 1 Click the **Properties** button on the Print dialog.
- 2 Select **Print last page first** on the **General** tab.

### Photo print smudged

Fingerprints may be on glossy side of paper.

Handle paper by the edges.



### **PictBridge camera not detected**

- 1 Check the USB connections from the PictBridge compatible camera or device to the printer.
- 2 If disconnected, reconnect the USB cable from the PictBridge compatible camera or device to the printer.
- 3 Make sure there is at least one picture in the PictBridge compatible camera or the device's internal memory or memory card.
- 4 Make sure the connected camera or device is PictBridge compatible. See your camera or device user guide for details.

### **Picture will not print**

A selected picture does not print.

- The image file may be corrupt. Review the picture on the camera or computer and delete if necessary.
- The image file may not be JPEG format. The printer can only print JPEG files in standalone mode. Connect to a computer and use EasyShare software to print BMP and TIFF formats.

### **Pictures cropped**

- Change the picture quality setting (or resolution) on your digital camera to 3:2. See your camera user guide for details.
- Adjust cropped pictures using Kodak EasyShare software on your computer.
- If you are printing from an application on your computer, select the proper paper size in print options.

NOTE: Cropping may vary depending on the selected picture size.

### **Poor print quality**

- 1 Clean the printhead.
- 2 Run a calibration.

If the problem persists, repeat as often as necessary.

## Print skewed or slanted

### Probable cause 1

The paper is not properly loaded in the tray.

- 1 Remove the stack of paper from the main paper tray and slide the paper guides to the outermost position.
- 2 Remove the paper and check for wrinkles and tears.
- 3 Straighten the stack of paper against a flat surface and reload it into the main paper tray.
- 4 Slide the paper-width and paper-length guides inwards until they stop at the edges of the paper.

See also: *Load main tray*

### Probable cause 2

More than one type of paper is loaded.

Load only one type of paper.

## Print spotted

Paper may be dirty.

Use a dry, lint-free cloth to wipe clean. For excessive dirt or debris, thoroughly clean the paper tray and load new paper.

NOTE: Keep paper tray covers closed to keep dust and debris from collecting on the paper or inside the printer.

## Print too dark

- Try re-taking the picture with the flash on or move within the flash range of the camera. See your camera user guide for details.
- Adjust the exposure compensation on your camera and try re-taking the picture. See your camera user guide for details.
- Edit the picture using Kodak EasyShare software on your computer. See the EasyShare software Help for details.
- Make sure the printer is not placed in direct sunlight or is not operating in a high-temperature environment.

## Print too light

**IMPORTANT:** For best results, use only Kodak ink cartridges and paper for your printer.

- Make sure the paper is loaded with the Kodak logo facing up. Reload if necessary.
- Try re-taking the picture with the flash off. See your camera user guide for details.
- Adjust the exposure compensation on your camera and try re-taking the picture. See your camera user guide for details.
- Edit the picture using Kodak EasyShare software on your computer. See the EasyShare software Help for details.

## Printing stops

Printing stops mid-print. Paper stops feeding and Status light may blink.

IMPORTANT: For best results, use only Kodak ink cartridges and paper for your printer.

### Check the paper.

- 1 Disengage the photo tray if engaged.
- 2 Check the paper access on the back of the printer.
- 3 Remove any loose paper from the printer.
- 4 Inspect the paper supplies and reload with new paper if necessary.
- 5 Carefully "fan" the paper to keep the sheets from sticking together.
- 6 Reload the paper trays. Do not overload.
- 7 Re-engage the photo tray, if desired, and then press Start to resume printing.

### Slow printing

NOTE: When printing a large number of prints, printing may slow down to prevent the printhead from overheating.

- Make sure the printer is not placed in direct sunlight or is not operating in a high-temperature environment (higher than 95° C or 95° F).
- Close unnecessary software applications.
- Make sure your computer meets the minimum system requirements. Upgrade your system if necessary.

## White edges on borderless prints

### Probable cause

White edges can appear when there are slight misalignments between the printer and paper. Some software applications are able to "hide" these small misalignments so that the prints look borderless like they are supposed to.

### Corrective action

Use the application's **Fit to Page/Fill Page** option or resize the picture so it is slightly larger than the paper size.

## Copy troubleshooting

### Copies faded or dull colours

#### Probable cause 1

The copy quality is set to **Draft**.

Set the copy quality to **Normal** or **Best**.

See *Set copy quality* or *Copy settings*.

### **Probable cause 2**

The brightness setting for copies is set too light.

Adjust the brightness setting to darker.

See *Change brightness* or *Copy settings*.

### **Copies too light or dark**

The brightness setting for copies is set too light or dark.

Adjust the brightness setting for copies.

See *Change brightness* or *Copy settings*.

### **Copy cut off**

The original is larger than the paper loaded.

When the original is larger than the paper loaded, use the Fit to Page option to reduce your original to the size of the paper loaded.

## **Scan troubleshooting**

### **Scan fails**

#### **Probable cause 1**

Your computer is not turned ON.

Turn on your computer.

#### **Probable cause 2**

Your AiO printer is not connected to your computer.

Connect your EasyShare AiO to your computer with a 2.0 USB cable.

#### **Probable cause 3**

The AiO printer Home Centre software is not installed.

Insert the Kodak EasyShare 5000 All-in-One Printer installation CD and install the software.

#### **Probable cause 4**

Your computer system resources may be low.

- 1** Turn off your computer and AiO printer and then turn them back on.
- 2** If the problem still persists, try scanning at a lower resolution.

## Scanned image blank

Your original is not placed correctly on the scanner glass.

Place your original face down on the rear left-hand corner of the scanner glass.



## Proofsheet scan unsuccessful

### Probable cause 1

The scanner glass is dirty.

Make sure the scanner glass is completely clean or the proofsheet might not scan properly (see *Clean the scanner glass*).

### Probable cause 2

Memory card or camera changed.

Make sure the same memory card is inserted or camera connected as you used to print the proofsheet.

### Probable cause 3

Proofsheet not placed correctly on the scanner glass.

Place the proofsheet on the rear left-hand corner of the scanner glass.

## Fax troubleshooting

Use this section to solve the following fax problems:

- Incoming calls not answered
- Fax tones on answering machine

## Incoming calls not answered

### Probable cause 1

Your Kodak All-in-One is turned off.

Make sure your All-in-One printer is plugged in. Press the **On** button on the control panel.

### Probable cause 2

Answer mode is set to **Manual**.

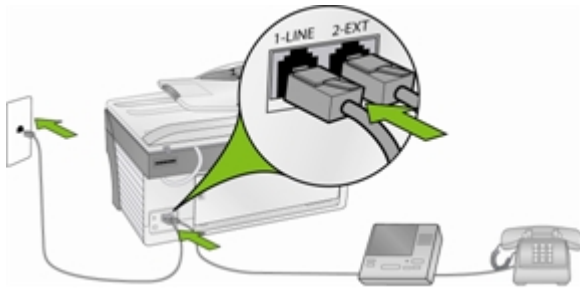
To answer incoming calls automatically, set your All-in-One printer to **Auto** or **Answering Machine** (see *Set Answer mode*).

## Fax tones on answering machine

### Probable cause 1

Your answering machine is not properly connected to the Kodak All-in-One.

When you have an answering machine and Kodak All-in-One on the same phone line, they must be connected as shown below.



Make sure that your AiO printer is set to automatically receive faxes and that the Rings to Answer setting is correct. The Rings to Answer setting is important if you have an answering machine on the same phone line as your AiO printer. You want the answering machine to answer the phone before the AiO printer. The number of rings to answer for the AiO Printer should be greater than the number of rings to answer for the answering machine. For example, if your answering machine is set to answer in 4 rings and your AiO printer to answer in 5 rings, the answering machine will answer an incoming call first and the AiO printer will monitor the line. If the AiO printer detects incoming fax tones, it will receive the fax. If the call is a voice call, the AiO printer ignores the call.

### Probable cause 2

Your Kodak All-in-One is not in Answering Machine mode.

Use the Home Centre software to place your AiO printer in answering machine mode (see *Fax settings*).

# 10 Appendix

## All-in-One specifications

<b>B&amp;W plain paper print speed (Draft/Normal/Best)</b>	32 / 10.5 / 5 ppm
<b>Colour plain paper print speed (Draft/Normal/Best)</b>	30 / 6 / 3 ppm
<b>Photo print speed - 4X6 Kodak Studio Gloss</b>	2.14 ppm [28 sec/print]
<b>Photo print speed - 8X10 Kodak Studio Gloss</b>	0.86 ppm [70sec/print]
<b>B&amp;W plain paper copy speed (Draft/Normal/Best)</b>	30 / 10 / 5 ppm
<b>Colour plain paper copy speed (Draft/Normal/Best)</b>	20 / 6 / 3 ppm
<b>Scan Resolution</b>	1200 dpi
<b>Size</b>	18.8"W x 16.4"D x 11.3"H (47.8x41.7x28.7 cm)
<b>Weight</b>	26.7 lbs (12.1 kg)
<b>Fax Speed</b>	V.34bis (33.6Kbps), V.17 (14.4KBps), V.29 (9600 Kbps)
<b>Image Formats</b>	JPG (EXIF V 2.21)
<b>Main Tray capacity</b>	100 sheets of 20 lb plain paper
<b>Photo Tray capacity</b>	20 sheets of 10 mil thick 4x6 inch (101x150 mm) photo paper
<b>Output Tray capacity</b>	50 sheets of 20 lb plain paper or 20 sheets of photo paper
<b>Product Operation Environmental Range</b>	5 to 35 degrees C, 15 to 85 % RH (non-condensing), and atmospheric pressure of no less than 15 PSI (approximately 10,000 ft ASL)

## Computer requirements

Requirement	Minimum	Recommended
Operating system	XP SP1	XP SP2, XP 64, Vista
CPU	Celeron	Pentium 4
Clock speed	1.2 GHz	3 GHz
Memory	128 MB	512 MB
Available disk space	200 MB	200 MB
Monitor resolution	800 x 600 pixels	1024 x 768 pixels
Colour depth	16 bit	24 bit
Interface	USB 1.1	USB 2.0
Removable drive	CD-ROM	CD-ROM

## Paper types

The following tables show the paper types and sizes that the Kodak AiO printer supports for copying and printing.

Supported paper types	
Plain paper	75 to 90 gsm (17 to 24 lb)
Photo paper	10 mil
Card stock	200 gsm index max (110 lb)
Envelopes	75 to 90 gsm (20 to 24 lb)
Transparency	All commercially available inkjet varieties (with or without a widedstripe)
Labels	All commercially available inkjet varieties on 275 x 213 mm (11 x 8.5") and A4 size sheets
Iron-on transfer	All commercially available inkjet varieties on 275 x 213 mm (11 x 8.5") and A4 size sheets



Supported paper sizes		
Usage	Size	Tray
Document page sizes Labels	A4 (297 x 210 mm) (11.8 x 8.4") A5 (210 x 148 mm) (8.4 x 5.9") A6 (148 x 105 mm) (5.9 x 4.2") US Executive (263 x 181 mm) (10.5 x 7.25") US Legal (350 x 213 mm) (14 x 8.5") US Letter (275 x 213 mm) (11 x 8.5") Custom sizes	Main
Index card stock	76.2 x 127 mm index cards (5 x 3") 101 x 152 mm index cards (6 x 4") 127x178 mm index cards (7 x 5")	Main
Transparency Iron-on transfers	A4 (297 x 210 mm) (11.8 x 8.4") US Letter (275 x 213 mm) (11 x 8.5")	Main
Envelopes	B5 (250 x 176 mm) (10 x 7") C5 (229 x 162 mm) (9 x 6.5") C6 (162 x 114 mm) (6.5 x 4.5") A2 (146 x 111 mm) (6 x 4.5") DL (designated long) (220 x 110 mm) (9 x 4.5") US #7 (225 x 175 mm) (9 x 7") US #9 (300 x 225 mm) (12 x 9") US #10 (238 x 103 mm) (9.5 x 4")	Main
Photo	89 x 127 mm (5 x 3.5") 150 x 100 mm 101 x 152 mm (6 x 4") 101 x 203 mm (8 x 4") 101 x 305 mm (12 x 4") 127x178 mm (7 x 5") 152 x 229 mm (9 x 6") 203 x 254 mm (10 x 8") 275 x 213 mm (11 x 8.5") (11 x 8.5") A4 297 x 210 mm (11.8 x 8.4")	Main Photo Photo Main Main Main Main Main Main Main
Greeting card	89 x 133 mm (5.25 x 3.5") 89 x 184 mm (7.25 x 3.5") 138 x 100 mm (5.5 x 4") 101 x 203 mm (8 x 4") Hagaki (148 x 100 mm) (5.9 x 4")	Main

## Safety

- Read and follow these cautions and warnings before using KODAK products.
- Always follow basic safety procedures.
- Follow all warnings and instructions marked on the equipment.

## Parts



### CAUTION

Do not disassemble this product; there are no user-serviceable part(s) inside. Refer servicing to Kodak qualified service personnel.



### WARNING

Keep out of reach of children.  
Ink is harmful if swallowed.

## Telecommunications



### CAUTION

To reduce the risk of fire, use only 26 AWG or larger telecommunication line cable.

## Power



### CAUTION

Unplug your AiO printer from the power outlet and refer servicing to qualified service personnel if the power lead or plug is frayed or damaged, the equipment gets wet or the equipment does not operate normally when the operating instructions are followed.



### CAUTION

The AC adaptor power supply is equipped with 3-wire earthing type plugs. If you cannot insert the plug into the power outlet, contact an electrician to check or replace the power outlet.



### CAUTION

Do not plug the AC adaptor into a household extension lead.



### CAUTION

For added protection from damage during a lightning storm or any time when your AiO printer and its associated AC adaptor will be left unused for long periods of time, unplug the AC adaptor from the power outlet and the phone line from the modem.



### WARNING

The use of an accessory attachment that is not recommended by Kodak, such as an AC adaptor, could cause fire, electric shock or injury.



### WARNING

Pushing objects through the equipment openings can result in an electric shock or risk of fire.

## Location:

**CAUTION**

To prevent your AiO printer from overheating, do not block or cover the slots and openings in the equipment, place it near a heat register or install it in a cabinet without proper ventilation.

**CAUTION**

Do not use your AiO printer near water or spill liquid on it.

**WARNING**

Do not place your AiO printer on an unstable cart, stand, bracket or table. Injury to persons and damage to the equipment may occur.

## Environment

**CAUTION**

Excessive dust levels may damage internal parts.

**CAUTION**

Unplug the equipment from the wall outlet before cleaning.

**CAUTION**

Dropping your AiO printer may damage the housing and result in extensive damage that will require repair by a qualified technician to restore normal operation.

**WARNING**

Do not expose this product to liquid, moisture or extreme temperatures. KODAK AC adaptors are intended for indoor use only. The use of controls, adjustments or procedures other than those specified herein may result in exposure to shock and/or electrical or mechanical hazards.

For more information, go to [www.kodak.com/go/MSDS](http://www.kodak.com/go/MSDS).

## Regulatory compliance

### FCC Compliance and Advisory



This equipment has been tested and found to comply with the limits for a Class B digital device, pursuant to Part 15 of the FCC Rules. These limits are designed to provide reasonable protection against harmful interference in a residential installation.

This equipment generates, uses and can radiate radio frequency energy and, if not installed or used in accordance with the instructions, may cause harmful interference to radio communications. However, there is no guarantee that interference will not occur in a particular installation.

If this equipment does cause harmful interference to radio or television reception, which can be determined by turning the equipment off and on, you are encouraged to try to correct the interference by one or more of the following measures: 1) reorient or relocate the receiving antenna; 2) increase the distance between the equipment and the receiver; 3) connect the equipment to an outlet on a circuit other than that to which the receiver is connected; 4) consult the dealer or an experienced radio/TV technician for additional suggestions.

Any changes or modifications not expressly approved by the party responsible for compliance could void the user's authority to operate the equipment. Where shielded interface cables have been provided with the product or specified additional components or accessories elsewhere defined to be used with the installation of the product, they must be used in order to ensure compliance with FCC regulations.



#### **CAUTION**

When using the wireless interface with an AiO printer, this equipment should be installed and operated with a minimum distance of 20 cm (7.9") between the radiator and your body for 2.4 GHz operations. This transmitter must not be collocated or operated in conjunction with any other antenna or transmitter.

## **FCC and Industry Canada**

This device complies with Industry Canada RSS-210 and FCC Rules. Operation is subject to the following two conditions: (1) this device may not cause harmful interference and (2) this device must accept any interference received, including interference that may cause undesired operation.

## **Canadian DOC statement**

**DOC Class B Compliance** - This Class B digital apparatus complies with Canadian ICES-003.

**Observation des normes-Class B** - Cet appareil numérique de la classe B est conforme à la norme NMB-003 du Canada.

## **CE**

Eastman Kodak Company hereby declares that this Kodak Wi-Fi card is in compliance with the essential requirements and other relevant provisions of Directive 1999/5/EC.

## **Waste Electrical and Electronic Equipment labelling**



In the European Union, this symbol indicates that when the last user wishes to discard this product, it must be sent to appropriate facilities for recovery and recycling. Contact your local Kodak representative or refer to [www.kodak.com/go/recycle](http://www.kodak.com/go/recycle) for additional information on the collection and recovery programmes available for this product.

## Notice to users in the European Economic Area

The Kodak EasyShare All-in-One is designed to function with analogue telephone networks in the following countries:

Austria	Germany	Portugal
Belgium	Ireland	Spain
Denmark	Italy	Sweden
Finland	Netherlands	Switzerland
France	Norway	United Kingdom

Network compatibility depends on customer selected settings, which must be reset to use the equipment on a telephone network in a country other than where the product was purchased. Contact the vendor or Eastman Kodak Company if additional product support is necessary.

This equipment has been certified by the manufacturer in accordance with Directive 1999/5/EC (Annex II) for Pan-European single-terminal connection to the public switched telephone network (PSTN). However, due to differences between the individual PSTNs provided in different countries, the approval does not, of itself, give an unconditional assurance of successful operation on every PSTN network termination point.

In the event of problems, you should contact your equipment supplier in the first instance.

This equipment is designed for DTMF tone dialling and loop disconnect dialling. In the unlikely event of problems with loop disconnect dialling, it is recommended to use this equipment only with the DTMF tone dial setting.

## Notice to users of the German Telephone Network

This Kodak fax product is designed to connect only to the analogue public switched telephone network (PSTN). Please connect the TAE N telephone connector plug provided with the Kodak EasyShare All-in-One Series 5000 into the wall socket (TAE 6) code N. This Kodak fax product can be used as a single device and/or in combination (in serial connection) with other approved terminal equipment.

## Fax compliance

This equipment complies with Part 68 of the FCC Rules and the requirements adopted by ACTA. On the bottom of this equipment is a label that contains, among other information, a product identifier in the format US:PA5MM07A5500. If requested, this number must be provided to the telephone company.

If the KODAK EASYSHARE 5500 All-in-One Printer causes harm to the telephone network, the telephone company will notify you in advance that temporary discontinuance of service may be required. However, if advance notice is not practical, the telephone company will notify the customer as soon as possible. Also, you will be advised of your right to file a complaint with the FCC if you believe it is necessary.

The telephone company may make changes in its facilities, equipment, operations or procedures that could affect the operation of the equipment. If this happens, the telephone company will provide advance notice in order for you to make the necessary modifications to maintain uninterrupted service.

If you have trouble with this KODAK EASYSHARE 5500 All-in-One Printer, or for repair or warranty information, please contact *Eastman Kodak - Rochester NY*. If the equipment is causing harm to the telephone network, the telephone company may request that you disconnect the equipment until the problem is resolved.

Connection to party line service is subject to state tariffs. Contact the state public utility commission, public service commission or corporation commission for information.

If your home has specially wired alarm equipment connected to the telephone line, ensure that the installation of the KODAK EASYSHARE 5500 All-in-One Printer does not disable your alarm equipment. If you have questions about what will disable alarm equipment, consult your telephone company or a qualified installer.

## Industry Canada documentation requirements

### Equipment attachments limitations

NOTICE: The Industry Canada label identifies certified equipment. This certification means that the equipment meets telecommunications network protective, operational and safety requirements as prescribed in the appropriate Terminal Equipment Technical Requirements document(s). The department does not guarantee that the equipment will operate to the user's satisfaction.

Before installing this equipment, users should ensure that it is permissible to be connected to the facilities of the local telecommunications company. The equipment must also be installed using an acceptable method of connection. The customer should be aware that compliance with the above conditions may not prevent degradation of service in some situations.

Repairs to certified equipment should be co-ordinated by a representative designated by the supplier. Any repairs or alterations made by the user to this equipment, or equipment malfunctions, may give the telecommunications company cause to request that the user disconnect the equipment.

Users should ensure, for their own protection, that the electrical earth connections of the power utility, telephone lines and internal metallic water pipe system, if present, are connected together. This precaution may be particularly important in rural areas.



### CAUTION

Users should not attempt to make such connections themselves, but should contact the appropriate electric inspection authority or electrician, as appropriate.

NOTICE: The Ringer Equivalence Number (REN) assigned to each terminal device provides an indication of the maximum number of terminals allowed to be connected to a telephone interface. The termination on an interface may consist of any combination of devices subject only to the requirement that the sum of the Ringer Equivalence Numbers of all the devices does not exceed five.

---

# Glossary

## A

**ADF:** Automatic Document Feeder

**AES:** Advanced Encryption Standard

## C

**CHAP:** Challenge Handshake Authentication Protocol

## D

**dBa:** Decibel measured with a "weighting filter"

**dBm:** A measured power level in decibels relative to 1 mW.

**Dongle:** A small electronic device that plugs into a USB port.

**DPOF:** Digital Print Order File - An ASCII order file that you can generate in a camera that supports DPOF. DPOF files enable you to request simple reprints of the photos in the file.

## E

**EAP:** Extensible Authentication Protocol

**EXIF:** EXIF stands for Exchangeable Image File Format and is a standard for storing interchange information in image files, especially those using JPEG compression. Most digital cameras now use the EXIF format.

## J

**JPEG:** The term stands for "Joint Photographic Experts Group", because that is the name of the committee that developed the format. JPEG is a compressed image file format. JPEG is a "lossy" format, which means that some quality is lost when the image is compressed.

## K

**KPT:** Kodak Perfect Touch

## P

**PictBridge:** A Camera and Imaging Products Association standard that enables direct printing between any PictBridge compliant digital cameras and any PictBridge compliant printer.

**Picture Transfer Protocol (PTP):** A standard for transferring pictures from a digital camera.

**PPP:** Point-to-Point Protocol

**PTP:** Picture Transfer Protocol - A standard for transferring pictures from a digital camera.

**T**

**TKIP:** Temporal Key Integrity Protocol

**W**

**WEP:** Wired Equivalent Privacy

**Wi-Fi:** Wireless Fidelity

**WLAN:** Wi-Fi Local Area Network

**WPA:** Wi-Fi Protected Access



# Index

## 2

2-sided printing accessory .....14

## A

A6 paper ..... 52

Answering machine ..... 27, 76

Audio feedback ..... 22

## B

B5 paper ..... 53

Bluetooth ..... 39, 97

Borderless ..... 103

Brightness ..... 64

Busy ..... 77

## C

Calibration ..... 88

Call waiting ..... 78

Clean ..... 88

Cleaning ..... 84

Colour ..... 54

Communication ..... 98

Computer ..... 98, 108

Confirmation page ..... 78

Control panel ..... 2, 36

Copy ..... 63, 64

Copy problems ..... 103, 104

Cover page ..... 73

Cropped pictures ..... 101

Customer support ..... 95

## D

Dark print ..... 102

Date ..... 22, 23

Demo sheet ..... 20

Diagnostic sheet ..... 85

DPOF ..... 21, 38

DSL ..... 24

Duplexer ..... 14

## E

Envelopes ..... 32

Error correction ..... 79

## F

Fax ..... 26, 27, 79, 80

Fax activity report ..... 73

Fax brightness ..... 75

Fax colour ..... 75

Fax problems ..... 106

Fax resolution ..... 74

Fax settings ..... 75

Firmware upgrade ..... 85

Fit to Page ..... 60

Format ..... 84

## I

Index print ..... 37

Ink cartridge ..... 13, 86, 97

Ink levels ..... 85

## J

Jam ..... 99

## L

Labels ..... 33

Language ..... 23

Layout ..... 43

LCD display ..... 8

Letter paper ..... 48

Light print ..... 102

## M

Main tray ..... 30

Maintenance ..... 83

Memory card ..... 84

Memory card slots ..... 9

Modem ..... 26, 27

## N

No answer ..... 77

## O

Originals ..... 29

## P

Paper ..... 100, 108

Paper feed ..... 98

Paper jam ..... 99

Phonebook ..... 80

Photo layout ..... 44, 45, 46, 47

Photo Layouts ..... 62

Photo print ..... 101

Photo tray ..... 31

Photos ..... 56

PictBridge ..... 9, 36, 101

Power ..... 11, 96

Preview .....	55, 64	Scanner lid .....	84
Print .....	36, 37, 43, 54	Scene balance .....	21
Print order .....	21	Send .....	80
Print picture .....	101	Settings .....	23, 54, 64
Print problems .....	100, 102	Shared line .....	25
Print quality .....	101	Sleep .....	22
Print spotted .....	102	Slow printing .....	103
Printhead .....	11, 88, 89	Speaker .....	77
Printing .....	40	Specifications .....	107
Printing problems .....	100	Speed .....	79
Printing stops .....	103	Speed dial .....	80
Proofsheet .....	37, 105	Standby .....	22
Pulse dialling .....	78	Start-up .....	15
<b>Q</b>		Support .....	93
Quality .....	54, 63	<b>T</b>	
Quantity .....	54, 63	Tagged images .....	21
<b>R</b>		Tagged photos .....	38
Redial .....	77, 80	Time .....	23
Requirements .....	108	Tone dialling .....	78
Reset .....	23	Transfer .....	20, 100
Rings .....	76	<b>U</b>	
<b>S</b>		USB port .....	9
Safety .....	110	<b>V</b>	
Scale Percent .....	61	Voice .....	26, 27
Scan .....	105	<b>W</b>	
Scan document (control panel) .....	69, 70, 71	White edges .....	103
Scan photo .....	67, 68	<b>Z</b>	
Scan problems .....	104, 105	Zoom .....	56
Scan settings .....	67	Zoom and crop .....	65
Scanner glass .....	84		



1K3247