

# NEXTORCH®

the smart light

## NEXTORCH®

the smart light

FLASHLIGHT CATALOG  WWW.NEXTORCH.COM

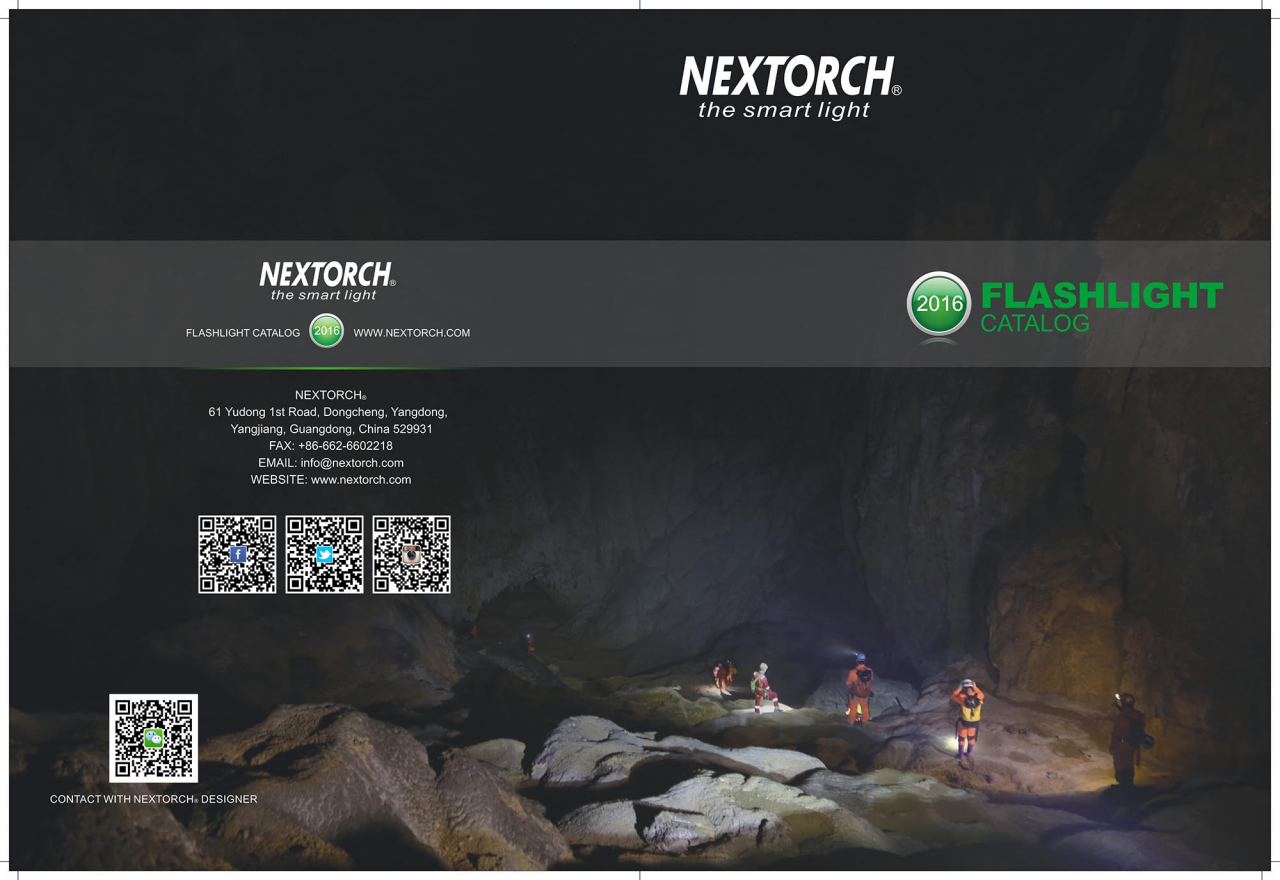
2016

## FLASHLIGHT CATALOG

NEXTORCH®  
61 Yudong 1st Road, Dongcheng, Yangdong,  
Yangjiang, Guangdong, China 529931  
FAX: +86-662-6602218  
EMAIL: [info@nextorch.com](mailto:info@nextorch.com)  
WEBSITE: [www.nextorch.com](http://www.nextorch.com)



CONTACT WITH NEXTORCH® DESIGNER



# ICONS



#### OSS (One Step Strobe)

Designed to gain the tactical edge, a 5Hz frequency strobe is the most effective



#### Dual-Light

2-in-1 design which allows 2 full size LEDs sharing 1 reflector



#### RFA 360° Rotate Focus

Simple rotation can set the beam to the desired span



#### Vari-Source

Compatible with various battery types



#### STT (Smart Torch Technology)

User programmable technology that allows for countless mode settings to fit different needs



#### USB Charging Port

Convenient and universal charging option



#### DUO SWITCH

Click for constant on, tabs to cycle through modes and double tabs for Tactical Strobe



#### RECTANGULAR SPOT LENS TECHNOLOGY

Designed for optimal brightness and efficiency, delivers a powerful wide beam



#### Quick Charge

It's speed while charging the proprietary battery pack



#### Fuel Index

Low battery warning and charging indication



#### Tactical Strobe

Low battery warning and charging indication



#### S.O.S.

Standard S.O.S. signal for emergency use

## ABOUT NEXTORCH

NEXTORCH® designs and produces superior flashlights and other high-end portable lighting solutions. Delivering reliable and powerful lighting with top-notch customer service is our pride and passion.

Since our inception in 2005, we continue to be the ultimate solution in illumination for law enforcement, security, tactical, hunting, outdoor activities and personal use. Our customers, industry and government bodies, as well as media worldwide, recognize and acknowledge our brand as the most reliable and innovative on the market.

The NEXTORCH® range of flashlights are distributed in over 100 countries and keep expanding. NEXTORCH® lights are used by law enforcement officers, outdoor enthusiasts, hunters, explorers, industry professionals, do-it-yourselfers and families like yours and ours. Simply put, NEXTORCH® delivers the most advanced lighting technology, battery efficiency and reliability. Our products are innovative, compact, sleek and intelligent—in other words, NEXTORCH® is the lighting solution that works.

## CONTENTS

NEW PRODUCTS	04-05
SAINT TORCH-SERIES	04-07
SAINT TORCH 10	06
SAINT TORCH 3	07
SAINT TORCH 1	07
T&P-SERIES	08-13
TA5	08
PA5	09
PG5	09
TA40	10
TA10	10
TA4	11
TA3	11
P8A	12
T6A	12
G6R	12
WL10X	13
myTorch-SERIES	14-15
myTorch S 18650	14
myTorch S XL	14
myTorch S AA	15
myTorch S 2AA	15
myTorch S 3AAA	15
S-SERIES	16-18
UL360	16
GL10	17
K10/K20	17
K3	18
K2	18
K1	18
H-SERIES	19-22
myStar	19
LIGHT STAR	20
VIKER STAR	20
TREK STAR	21
ECO STAR	21
TREK STAR UV	22
ECO STAR UV	22
B-SERIES	23
B10	23
GLO-TOOB™	24
GT-AAA	24
TOOB-AAA	24
TOOB-AA	24
GT-LITHIUM	24
GT-LITHIUM IR	24
FLASHLIGHT SET	25
TA40 SET	25
T&L RS SET	25
T&A LED SET	25
ACCESSORIES	26-27
DISPLAYS	28-29

## 2016 NEW PRODUCTS

70  
LUMENSUL360 PAGE 18

360° UTILITY POCKET LANTERN

230  
LUMENSWL10X EXECUTOR PAGE 18  
PICATINNY RAIL MOUNT WEAPON LIGHT

360° Rotate Focus



USB Rechargeable



Fuel Index

S.O.S.

S.O.S.

550  
LUMENSmyStar PAGE 19  
FOCUS ADJUSTABLE RECHARGEABLE HEAD LAMP420  
LUMENSB10 PAGE 23  
HIGH OUTPUT RECTANGULAR SPOT BIKE LIGHT900  
LUMENSWhite: 800 LUMENS  
Green: 200 LUMENSTA5 PAGE 08

OSS



USB Rechargeable



Fuel Index



S.O.S.

S.O.S.

P5G PAGE 09

Dual-Light



USB Rechargeable



DUO SWITCH



Tactical Strobe



S.O.S.

S.O.S.

660  
LUMENSPA5 PAGE 09

360° Rotate Focus



USB Rechargeable



DUO SWITCH



Tactical Strobe



S.O.S.

S.O.S.

3200  
LUMENSSAINT TORCH 10 PAGE 06

Quick Charge



DUO SWITCH



Fuel Index



S.O.S.

S.O.S.

560  
LUMENSTA10 PAGE 10

Vari-Source



DUO SWITCH



Tactical Strobe



S.O.S.

S.O.S.

TOOB-AAA PAGE 24  
COMPACT SIGNAL LIGHTTOOB-AA PAGE 24  
COMPACT SIGNAL LIGHT

## SAINT TORCH SERIES

NEXTORCH's flagship search lights, known for being light weight, ergonomically-handling, reliable, and ultra-bright. Designed for rescue, exploration, patrol and maintenance, SAINT TORCH is the pro's choice.

SAINT TORCH10 **NEW**

3200 LUMEN HIGH OUTPUT  
RECHARGEABLE SEARCH TORCH



Saint Torch 10 is a turbo-power outdoors search light, using 1 CREE® XPB70 LED to deliver a power beam of up to 3200 lumens. A 10400mAh high capacity re-chargable battery pack supports this extra high endurance tool to deliver 120 hours of light. 16.8V AC direct quick charge design, just 4 hours charging time.

## 3200 LUMENS



## FEATURES

- \* AC direct quick charge design
- \* LED battery indicator
- \* Patented DUO SWITCH, single switch for easy momentary activation or mode switching
- \* Comes with a shoulder strap for long term carrying

## SPECIFICATIONS

LED:	CREE® XPB70 LED
Mode:	3200lm / 1500lm / 400lm / 60lm / strobe / S.O.S.
Runtime:	300min / 600min / 15h / 120h / - / -
Beam distance:	470m / 1542'
Water resistance:	IPX7 (1m)
Impact resistance:	1m / 3.28'
Battery:	Built-in Rechargeable Battery Pack (included)
Dimensions:	185mm * 50mm * 52mm
Weight:	667 g / 23.53 oz (with battery)

## 2600 LUMENS



## FEATURES

- \* 2600 lumen high output, 445 meter beam distance
- \* USB / Direct Rechargeable
- \* 6 modes pre-set, including strobe and S.O.S.
- \* Smart Torch Technology (STT), PC programmable with unlimited modes



## SPECIFICATIONS

LED:	CREE® XM-L2 U2
Mode:	2600lm / 1300lm / 240lm / strobe / S.O.S.
Runtime:	150min / 10h / 12h / - / -
Beam distance:	445m / 1460'
Water resistance:	IPX7 (1m)
Impact resistance:	1m / 3.28'
Battery:	Built-in Rechargeable Battery Pack (included)
Dimensions:	177mm * 40mm * 48mm
Weight:	676 g / 23.98 oz (with battery)

## 1000 LUMENS



## FEATURES

- \* Max output up to 1000 lumens and throw beam up to 640 meters
- \* USB / Direct rechargeable, comes with 16650 lithium-ion batteries for up to 1000 hours runtime
- \* Runs on one to four 16650
- \* 7 modes pre-set, including strobe and S.O.S.
- \* DUO SWITCH with 'click and tap' functions for easy momentary activation or mode switching

## SPECIFICATIONS

LED:	CREE® XM-L2 U2
Mode:	1000lm / 550lm / 110lm / 12lm / strobe / S.O.S.
Runtime:	500min / 2200min / 4800min / 100h / - / -
Beam distance:	640m / 2100'
Water resistance:	IPX7 (1m)
Impact resistance:	1m / 3.28'
Battery:	4*16650 (included)
Dimensions:	180mm * 75.5mm * 50mm
Weight:	486g / 17.12oz (without battery)

## SAINT TORCH3

2600 LUMEN HIGH OUTPUT USB RECHARGEABLE  
SEARCH TORCH

Designed for hunting, search, patrol, overhaul and other rugged applications



Extremely Bright, Superbly Long-lasting, Intelligent

SAINT TORCH 3 is a turbo-power outdoors searching flashlight, using 3 CREE® XM-L2 LED to deliver a power beam of up to 2600 lumens, a wide beam for maximum close-range coverage and up to 445m beam distance for searching capacity. A 10400mAh high capacity re-chargeable battery pack supports this extra high endurance tool to deliver more than 15 days of light. SAINT TORCH 3 is your best choice for scouting, extended searching, patrol and rescue, and as an extra light for the car.

## SAINT TORCH1

1000 LUMEN 640 METER ULTRA-THROW USB  
RECHARGEABLE FLASHLIGHT

Designed for hunting, search, patrol, overhaul and other rugged applications



The Saint Torch 1 is an ultra-throw outdoor searching flashlight, using a single CREE® XM-L2 U2 LED, delivering up to 1000 lumens. The reflector is super-powered, letting its beam extend as far as 640 meters, allowing your search light to go further. The Saint Torch 1 is rechargeable via direct DC electrical connection or USB cable. The Saint Torch 1 comes with a shoulder strap that lets you affix the flashlight to your waist to free up your hands.

## T&amp;P-SERIES

People who put themselves in the harm's way, must have a 24/7 partner at night, in the dark. It is their very duty to protect and safeguard others, thus they deserve to be protected. NEXTORCH's Duty series offers a reliable yet cost effective low-light solution. From critical installation, private homes, industrial plants to public streets, T&P Series is the 24/7 partner you can trust.

TA5 **NEW**

HIGH OUTPUT RECHARGEABLE DEFENDER AND RESCUER



PAGE 26

TACTICAL HOLSTER AVAILABLE

TA5 features a NEXTORCH<sup>®</sup> proprietary OSS tail cap that enables literally a One-Step-Strobe activation of Tactical Strobe at 900lm for effective self-defense and signaling. A constant-on/off switch is located in the front for primary uses. The low-profile Nano-Ceramic rescue barrel challenges glass extraordinarily yet maintains garment and skin safe. A hidden USB charging port is designed for direct charging while using 18650, while CR123A is also compatible.

## 900 LUMENS



## FEATURES

- \* One-Step-Strobe(OSS) tail cap with Tactical Strobe mode
- \* A constant-on front switch selects from 3 light setting, and a hidden S.O.S. mode
- \* OSS is 900lm only and overrides the current mode
- \* Low-profile Nano-Ceramic rescue barrel and tracking system
- \* Direct USB charging port with indicator
- \* Powered by 1\* 18650 or 2\* CR123A



## SPECIFICATIONS

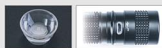
LED:	CREE® XP-L V5
Mode:	900lm / 230lm / 90lm / strobe / S.O.S.
Runtime:	2h30m / 1h40m / 150h / -
Beam distance:	226m / 734.5'
Water resistance:	IPX4
Impact resistance:	2m / 6.56'
Battery:	1*18650 (included)
Dimensions:	178mm * 38.4mm * 26.5mm
Weight:	170g / 6.0oz (without battery)

## 660 LUMENS



## FEATURES

- \* CREE® XP-L Neutral White Light LED emitter, max output 660 lumens
- \* Powered by 1x 18650 or 2x CR123A
- \* DUO Switch multi-purpose technology operates in 2 modes, plus Tactical Strobe and an S.O.S.
- \* USB Charging Port with LED indicator

NEXTORCH<sup>®</sup> USB direct charging port

## Patented Fresnel Lens

## SPECIFICATIONS

LED:	CREE® XP-L Neutral White Light LED
Mode:	660lm / 30lm / strobe / S.O.S.
Runtime:	3h50m / 320 / - / -
Beam distance:	200m / 721.8'
Water resistance:	IPX4
Impact resistance:	1m / 3.28'
Battery:	1*18650 (included)
Dimensions:	148mm * 34mm * 26mm
Weight:	147g / 5.19oz (without battery)

White: 800 LUMENS  
Green: 200 LUMENS

## FEATURES

- \* Dual-Light White Light max output at 800 Lumens, Dual-Light Green Light max output at 200 lumens
- \* Powered by 1x 18650 or 2x CR123A
- \* DUO SWITCH multi-purpose technology operates in 2 modes,
- plus Tactical Strobe and an S.O.S.
- \* USB Charging Port with LED indicator



Dual-Light technology, white light &amp; color combination

## SPECIFICATIONS

LED:	CREE® XP-L V5 LEDXP-E2 GREEN LED
Mode:	800lm / 40lm / strobe / S.O.S. / 200lm
Runtime:	3h30m / 270 / - / - / 900h
Beam distance:	240m / 807.1'
Water resistance:	IPX4
Impact resistance:	1m / 3.28'
Battery:	1*18650
Dimensions:	168mm * 40mm * 26mm
Weight:	185g / 6.53oz (without battery)

PA5 **NEW**

ROTATE FOCUS ADJUSTABLE RECHARGEABLE



## FLI STANDARD



There is always a time where a quick shift of focus is needed. With the all new NEXTORCH<sup>®</sup> RFA technology on board, PA5 offers a smooth transition of focus with a simple rotation, and a best in class beam spot. DUO SWITCH enables PA5 to quickly mode shift. PA5 runs with 1x 18650 or 2x CR123A, and comes with low-profile well-hidden USB charging port with indicator.

P5G **NEW**

ULTRA-HIGH OUTPUT WHITE AND GREEN DUAL-LIGHT

reddot award 2016  
winner

## FLI STANDARD



NEXTORCH<sup>®</sup>, has finally come out an answer to combine 2 light into 1. P5G features NEXTORCH<sup>®</sup> proprietary Dual-Light technology, starting a 200 lumens green light illumination and a 800 lumens white light. P5G runs with 1x 18650 or 2x CR123A, with easy selection of modes via DUO SWITCH. It also features a well-covered low-profile USB direct charging port.

## TA40

## 1040 LUMEN ULTRA BRIGHT TACTICAL FLASHLIGHT

Designed for military, law enforcement, security, search and rescue, hunting and more



FL1 STANDARD



Equipped with DUO SWITCH, the TA40 has multiple modes to fit with various applications. A max output of 1040 lumens drives a stunning force of illumination and control. Powered by 1x 18650 or 2x CR123A, TA40 has a direct USB charging port which can also act as a remote plug-in.

## 1040 LUMENS



## FEATURES

- \* CREE® XM-L2 LED emitter, max output 1040 lumens
- \* Powered by 1x 18650 or 2x CR123A
- \* DUO SWITCH multi-purpose technology operates in 7 light modes, plus Tactical Strobe and an S.O.S.

## APPLICATIONS



## SPECIFICATIONS

LED:	CREE® XM-L2 LED
Mode:	1040lm/303m/250m/80m/strobe/S.O.S.
Runtime:	1h / 1h30min / 3h / 10h / - / -
Beam distance:	285m / 503.6'
Water resistance:	IPX-8 (2m)
Impact resistance:	3m / 9.84'
Battery:	2*CR123A (included) / 1*18650
Dimensions:	147mm * 34mm * 25.4mm
Weight:	124g / 4.37oz (without battery)

## 460 LUMENS



## FEATURES

- \* Max output up to 460 lumens
- \* USB Rechargeable
- \* One 18650 8-ion rechargeable battery with USB cable (included)
- \* DUO SWITCH with 'click and tap' function for easy momentary activation or mode switching

## APPLICATIONS



## SPECIFICATIONS

LED:	CREE® XP-G2 RS LED
Mode:	460m/200m/100m/20m/strobe/S.O.S.
Runtime:	1h30min / 2h30min / 5h30min / 5h / -
Beam distance:	271m / 889.1'
Water resistance:	IPX-8 (2m)
Impact resistance:	3m / 9.84'
Battery:	1*18650 (included) / 2*CR123A
Dimensions:	147mm * 34mm * 25.4mm
Weight:	124g / 4.37oz (without battery)

## TA4

## 460 LUMEN HIGH PERFORMANCE USB RECHARGEABLE FLASHLIGHT

Designed for law enforcement, security, maintenance, hiking, climbing, biking and other activities



FL1 STANDARD



The high-performance TA4 utilizes the CREE® XP-G2 RS LED to deliver up to 460 lumens. Rechargeable via USB cable, powered by the 18650 lithium-ion battery. Made of indestructible MIL-Specs grade 1" aluminum body, waterproof up to 2 meters and impact resistance up to 3 meters, the TA4 is able to withstand a wide variety of adverse environments.

## TA10

## VARI-SOURCE HIGH OUTPUT BACKUP



2015 Outdoor Gold Award

FL1 STANDARD



TA10 is a one of its kind backup. The unique Vari-Source technology makes it compatible to almost all battery available on the market, which will largely increase the survivability and bring light and hope in case of emergency. DUO SWITCH fulfill multi-purpose application, including a Tactical Strobe mode activated through double tap activities.

## 560 LUMENS



## FEATURES

- \* Multi-battery design, compatible with AA / CR123A / 14500 / 16340 etc. batteries
- \* Light and handy design for one-hand use
- \* Patented DUO SWITCH, single switch for easy momentary activation or mode switching

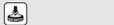
## APPLICATIONS



## SPECIFICATIONS

LED:	CREE® XP-L V3
Mode:	560lm / 215m / 303m / strobe / S.O.S.
Runtime:	50min / 1h45min / 8h30min / - / -
Beam distance:	170m / 557.2'
Water resistance:	IPX-8 (2m)
Impact resistance:	1.5m / 4.92'
Battery:	1*14500 (Not included)
Dimensions:	122mm * 22mm * 29.2mm
Weight:	89g / 3.14oz (without battery)

## 550 LUMENS



## FEATURES

- \* Max output up to 550 lumens
- \* 6 modes for the most common tactical flashlight applications
- \* MIL-Spec grade 1" aluminum body, with 2-meter IPX-8 waterproof standard and 3-meter shock-proof
- \* DUO SWITCH with 'click and tap' function for easy momentary activation or mode switching

## APPLICATIONS



## SPECIFICATIONS

LED:	CREE® XM-L T4 LED
Mode:	550m/200m/70m/10m/strobe
Runtime:	1h30min — 5h
Beam distance:	191m / 625.4'
Water resistance:	IPX-8 (2m)
Impact resistance:	3m / 9.84'
Battery:	2*CR123A (included) / 1*18650
Dimensions:	149mm * 34mm * 25.4mm
Weight:	134 g / 4.69 oz (without battery)

## TA3

## SUPREME TACTICAL LED FLASHLIGHT

Designed for military, hunting, search, patrol, machine overhaul and other applications



FL1 STANDARD



The TA3 is the light for all your tactical requirements. Made of an indestructible MIL-Specs grade 1" aluminum body, with 2-meter IPX-8 waterproof standard and 3-meter shock-proof specs, it's built for your toughest task accomplishment and long lasting handling comfort. Also compatible with a wide range of accessories.

## P8A

## 660 LUMEN TACTICAL SMART LIGHT

Designed for law enforcement, security, military, hunting, search and rescue, and more



## FEATURES

- 660 lumen high output powered by 1\*18650 battery
- USB Rechargeable
- 4 modes pre-set including strobe
- Smart Torch Technology (STT), PC programmable with unlimited modes
- DUO SWITCH with 'click and tap'

## FLI STANDARD



## 660 LUMENS

## APPLICATIONS



## SPECIFICATIONS

LED:	CREE® XMAL L2
Mode:	600m / 200m / 10m / 18m / strobe
Runtime:	13h/50m / 4h / 12h / 1
Beam distance:	172m / 564.3'
Water resistance:	IPX7 (1m)
Impact resistance:	2m / 6.5'
Battery:	1 * 18650 (included)
Dimensions:	103mm * 37.5mm * 28.5mm
Weight:	134g / 5.04 oz (without battery)

## T6A

## HIGH OUTPUT XENON TACTICAL FLASHLIGHT



## FEATURES

- Ultra bright xenon incandescent bulb, LED bulb available
- Superior color rendering and strong penetration
- Anti-roll, IPX8 (10m) water-proof standard

## FLI STANDARD



## 80 LUMENS

## APPLICATIONS



## SPECIFICATIONS

LED:	Xenon handspot
Mode:	80lm
Runtime:	144h / 472.3'
Beam distance:	154m / 503.9'
Water resistance:	IPX8 (10m)
Impact resistance:	2*CR123A (included)
Dimensions:	130mm * 25mm * 34mm
Weight:	134g / 4.69 oz (without battery)

## G6R

## DURABLE NYLON-FIBER USB RECHARGEABLE FLASHLIGHT

Designed for fire rescue, mining, general maintenance and everyday activities



## FEATURES

- Lightweight and durable nylon fiber shell
- USB Rechargeable
- One 18650 li-ion rechargeable battery with USB cable (included)
- Max runtime up to 50hrs at low

## FLI STANDARD



## 160 LUMENS

## APPLICATIONS



## SPECIFICATIONS

LED:	CREE® XP-G2 R3
Mode:	160lm / 58m
Runtime:	10h / 50h
Beam distance:	155m / 508.5'
Water resistance:	IPX7
Impact resistance:	1m / 3.28'
Battery:	1 * 18650 (included)
Dimensions:	127mm * 28.8mm * 34mm
Weight:	80 g / 2.82 oz (without battery)



## 230 LUMENS

WL10X EXECUTOR **NEW**

## SINGLE CR123A HIGH OUTPUT WEAPON LIGHT

## FEATURES

- Ambidexous trigger operation
- Easy clip mounting
- Adjustable rail block fits most rail models
- Front opening battery case for easy refill
- Rugged and compact size

## APPLICATIONS



## SPECIFICATIONS

LED:	CREE® XP-G2 R3 LED
Mode:	230lm
Runtime:	120min
Beam distance:	130m / 426.5'
Water resistance:	IPX7 (1m)
Impact resistance:	1m / 3.28'
Battery:	1 * CR123A (included)
Dimensions:	86.7mm * 37.8mm * 24mm
Weight:	97g / 3.42oz (without battery)



## FLI STANDARD



The all new Executor features an easy mounting solution, an adjustable rail fitting block and a powerful CREE® XP-G2 R3 LED emitter that runs on single CR123A battery. Executor throws 230 lumens close quarter combat lighting and remains a very small compact body that blends with the handgun. The ambidexous Bi-Paddle trigger is ergonomically designed and adapts to all tactical situations with a slight momentary and a click constant setting. Front opening makes it easy to change battery.

## myTorch S 18650

## ULTRA BRIGHT USB RECHARGEABLE LED SMART TORCH

Designed for law enforcement, search and rescue, security, general maintenance and other applications



## 660 LUMENS

## APPLICATIONS



## SPECIFICATIONS

LED:	CREE® XP-G4 U2
Mode:	660lm / 330lm / 2lm / strobe
Runtime:	19 / 20h / 290min / 110h (-)
Beam distance:	178m / 563.6ft
Water resistance:	IPX-7 (1m)
Impact resistance:	1m / 3.28'
Battery:	1*18650 (included)
Dimensions:	144mm x 38mm x 26mm
Weight:	136g / 4.80oz (without battery)

## FEATURES

- \* Max output up to 660 lumens
- \* USB rechargeable
- \* 4 modes preset with Smart Memory Mode technology including strobe
- \* Smart Torch Technology (STT), PC programmable with unlimited modes
- \* Built-in 18650 rechargeable LiIum-ion battery, rechargeable more than 500 times

## FLI STANDARD



## myTorch S XL

## ULTRA BRIGHT TACTICAL LED SMART TORCH

Designed for the toughest tactical, self-defense, hunting, search and rescue, machine maintenance and other rugged conditions



## 860 LUMENS

## APPLICATIONS



## SPECIFICATIONS

LED:	CREE® XM-L2 U2
Mode:	860lm / 430lm / 30lm / 2lm / strobe
Runtime:	2h / 4h / 30h / 200h (-)
Beam distance:	210m / 688.6ft
Water resistance:	IPX-7 (1m)
Impact resistance:	1m / 3.28'
Battery:	1*18650 (included)
Dimensions:	228mm x 38.5mm x 26mm
Weight:	212g / 7.48oz (without battery)

## FEATURES

- \* Super-bright 860 lumen output, 210 meter beam distance
- \* USB rechargeable
- \* 6 modes preset including strobe
- \* Smart Torch Technology (STT), PC programmable with unlimited modes
- \* D/U/D SWITCH with 'click' and 'tap' functions for easy momentary activation or mode switching

## FLI STANDARD



## 130 LUMENS

## APPLICATIONS



## SPECIFICATIONS

LED:	CREE® XP-G2 R5
Mode:	130lm / 65lm / 2lm / strobe
Runtime:	2h / 2h / 290min
Beam distance:	81m / 265.75'
Water resistance:	IPX-1 (1m)
Impact resistance:	1m / 3.28'
Battery:	2*AA/alkaline AA (included) or 1*Ni-MH AA
Dimensions:	120mm x 26.4mm x 19.2mm
Weight:	56g / 1.97oz (without battery)

## 235 LUMENS

## APPLICATIONS

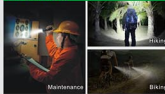


## SPECIFICATIONS

LED:	CREE® XP-G2 R5
Mode:	235lm / 120lm / 2lm / strobe
Runtime:	1h/10min / 2h / 30h (-)
Beam distance:	110m / 360.8ft
Water resistance:	IPX-7 (1m)
Impact resistance:	1m / 3.28'
Battery:	2*AA/alkaline AA (included) or 1*Ni-MH AA
Dimensions:	110mm x 26.4mm x 19.2mm
Weight:	72g / 2.54oz (without battery)

## 300 LUMENS

## APPLICATIONS



## SPECIFICATIONS

LED:	CREE® XM-L T4
Mode:	300lm / 150lm / 2lm / strobe
Runtime:	2h/30min / 1h / 30h (-)
Beam distance:	140m / 459.32'
Water resistance:	IPX-7 (1m)
Impact resistance:	1m / 3.28'
Battery:	2*AA/alkaline AA (included) or 1*Ni-MH AA
Dimensions:	140mm x 36mm x 27.8mm
Weight:	130g / 4.60oz (without battery)

## myTorch S AA

## LIGHTWEIGHT USB RECHARGEABLE LED SMART TORCH

Designed for camping, hiking, climbing, general maintenance and everyday activities



## FEATURES

- \* 4 modes preset with Smart Memory Mode technology including strobe
- \* Smart Torch Technology (STT), PC programmable with unlimited modes
- \* Compatible with non-rechargeable alkaline batteries or rechargeable Ni-MH batteries
- \* USB rechargeable (when using Ni-MH battery)

## FLI STANDARD



## myTorch S 2AA

## LIGHTWEIGHT USB RECHARGEABLE LED SMART TORCH

Designed for camping, hiking, climbing, general maintenance and everyday activities



## FEATURES

- \* 4 modes preset with Smart Memory Mode technology including strobe
- \* Smart Torch Technology (STT), PC programmable with unlimited modes
- \* Compatible with non-rechargeable alkaline batteries or rechargeable Ni-MH batteries
- \* USB rechargeable (when using Ni-MH battery)

## FLI STANDARD



## myTorch S 3AAA

## LIGHTWEIGHT USB RECHARGEABLE LED SMART TORCH

Designed for camping, hiking, climbing, general maintenance and everyday activities



## FEATURES

- \* Max output up to 300 lumens
- \* 4 modes preset with Smart Memory Mode technology including strobe
- \* Smart Torch Technology (STT), PC programmable with unlimited modes
- \* Compatible with non-rechargeable alkaline batteries or rechargeable Ni-MH batteries
- \* USB rechargeable (when using Ni-MH battery)

## FLI STANDARD





## S-SERIES

S-Series is NEXTORCH's compact sized, stylish Every Day Carry type of illumination

UL360 **NEW**

360° UTILITY POCKET LANTERN



UL360 is a new member of NEXTORCH's family. It is named "Pocket Lantern" since it fits in the palm and can be carried in the pocket. This little thing is powered by single AA battery that can light up to 70 lumens, can light up a 5m<sup>2</sup> area. Pocket Lantern can stand up and rotate 360 degrees to point an desired angle for comfortable lighting. Most interesting of all, Pocket Lantern comes with a magnetic bottom plate, a bungee cord and a S-Biner, offer countless mounting option that makes UL360 fit in almost everywhere. UL360 Pocket Lantern is truly an handy illumination device which is perfect for EDC carry, outdoor camping and emergency light source.

## 70 LUMENS

## FEATURES

- \* Tiny and compact, thumb sized only
- \* 360 degree rotatable Lamp body design
- \* Magnetic Body design, with S-Biner and elastic strap supporting multi-function quick attach

## APPLICATIONS



## SPECIFICATIONS

Model:	XC-02 R0 NEUTRAL WHITE LED
LED:	CREE®
Mode:	70m / 50m
Runtime:	200min / 120h
Beam distance:	5m / 18.4'
Water resistance:	IPX4
Input resistance:	1m / 3.28'
Battery:	1*AA (included)
Dimensions:	70mm * 36mm * 21mm
Weight:	40g / 1.4oz (without battery)

## 18 LUMENS

## APPLICATIONS



## SPECIFICATIONS

LED:	NICHIA LED
Mode:	18 m / 2 m (stable)
Runtime:	300min / 50 h / ---
Beam distance:	16m / 52.4'
Input resistance:	1m / 3.28'
Battery:	Built-in Rechargeable Li-ion battery
Dimensions:	55mm * 25mm * 19mm
Weight:	13 g / 0.46 oz (with battery)

K00: **18 LUMENS**

K10: **65 LUMENS**

K20: **130 LUMENS**

## SPECIFICATIONS

Model:	K00	K10	K20
LED:	NICHIA LED	CREE® XP-G2 R5	CREE® XP-G2 R5
Mode:	18m	20m	30m
Input resistance:	1m	1m	1m
Runtime:	11h	1h40min	1h10min
Beam distance:	22m / 72.16'	2m / 6.56'	40m / 131.23'
Input resistance:	1m / 3.28'	1m / 3.28'	1m / 3.28'
Battery:	1*AAA (included)	1*AAA (included)	1*AAA (included)
Dimensions:	36mm*20mm*16mm (with battery)	36mm*20mm*16mm (with battery)	36mm*20mm*16mm (with battery)
Weight:	13 g / 0.46 oz (without battery)	12 g / 0.42 oz (without battery)	25 g / 0.88 oz (without battery)

## APPLICATIONS



## GL10

## USB RECHARGEABLE LED KEYCHAIN LIGHT

Designed for gift and general everyday use



## FEATURES

- \* USB rechargeable
- \* Compact and lightweight, with key ring for everyday carry
- \* 18 lumen output, with 3 modes, and runtime up to 50 hours

## FLI STANDARD



## K00 / K10 / K20

## AAA/ AA LED MINI LIGHT

Designed for gift, camping, hiking, general maintenance and everyday use



K00: 18 LM, 1 mode

K10: 65 LM, 3 modes

K20: 130 LM, 3 modes

## FEATURES

- \* Easy to operate SLIDE SWITCH
- \* Compact and lightweight, with key ring for everyday carry
- \* Convenient and economical AAA/AA battery

## FLI STANDARD K00



## FLI STANDARD K10



## FLI STANDARD K20



Our new K00/K10/K20 series of LED mini lights are compact, sleek, fashionable and a must-have for daily use. The stainless steel key ring hinges to your backpack, keys or other items for everyday carrying. Utilizing the most advanced LED technology, the K00/K10/K20 series produces efficiently bright output and comes equipped with a unique SLIDE SWITCH, making one-handed operation a snap. The K00/K10/K20 mini lights are the convenient and necessary addition to your everyday accessories.

## K3

## ULTRA BRIGHT 2 AAA LED PENLIGHT

Designed for gift, hiking, camping, general maintenance and everyday activities



## FEATURES

- Compact structure and lightweight
- Durable stainless steel clip, easy for everyday carrying
- 4 Modes with Smart Memory Mode technology

## FLL STANDARD



## 180 LUMENS

## APPLICATIONS



## SPECIFICATIONS

LED:	CREE® XP-G2 R3
Mode:	150lm / 200m / 200m / strobe
Runtime:	20min / 40/200m / 30h / -
Beam distance:	50.5m / 195.4'
Water resistance:	IPX-4
Impact resistance:	1m / 3.28'
Battery:	2*AAA (included)
Dimensions:	150mm * 13.8mm * 12.4mm
Weight:	25g / 0.88oz (without battery)

## K2

## AA LED FLASHLIGHT

Designed for gift, hiking, camping, general maintenance and everyday activities

S.O.S.



## FEATURES

- Compact size
- Stainless steel clip for convenient transport
- 5 practical modes: 65 / 30 / 7 Lumens, Strobe and S.O.S.
- Anti-rolling structure and water resistant

## FLL STANDARD



## 65 LUMENS

## APPLICATIONS



## SPECIFICATIONS

LED:	CREE® XP-G2 R3
Mode:	65lm / 50m / 7m / strobe / S.O.S.
Runtime:	60min / 60/30min / 10h / -
Beam distance:	51m / 168.3'
Water resistance:	IPX-4
Impact resistance:	1m / 3.28'
Battery:	1*AA (included)
Dimensions:	78mm * 18.7mm * 17.8mm
Weight:	30g / 1.1oz (without battery)

## K1

## AAA KEYCHAIN LED FLASHLIGHT

Designed for gift, camping, hiking, general maintenance and everyday activities



## FEATURES

- Only 2.48" long and weighs 0.49 oz
- With S-Biner™ for everyday use
- Rotatable stainless steel head

## FLL STANDARD



## 40 LUMENS

## APPLICATIONS



## SPECIFICATIONS

LED:	CREE® XP-G2 R3
Mode:	40lm
Runtime:	1h40min
Beam distance:	40m / 131.2'
Water resistance:	IPX-4
Impact resistance:	1m / 3.28'
Battery:	1*AAA (included)
Dimensions:	63mm * 14.3mm * 13.6mm
Weight:	14g / 0.49oz (without battery)

## H-SERIES

NEXTORCH® H-Series allow user to go totally hands free. The H-series head lamps are made to fit different missions, built with smart brightness setting, versatile features, and light weight construction. As mentioned, they are reliable and ergonomically designed illumination products.



## 550 LUMENS

myStar<sup>NEW</sup>

## FOCUS ADJUSTABLE RECHARGEABLE HEAD LAMP



reddot award 2016  
winner



## FLL STANDARD



## FEATURES

- 360° Focus technology
- Ultra bright 550 lumen output, max runtime of 63 hours
- Built-in micro USB charging port
- Ergonomically designed head band for comfortable long time wearing

## SPECIFICATIONS

LED:	CREE® XP-L V5
Mode:	550lm / 200m / 20m / S.O.S.
Runtime:	40/20m / 70/20m / 63h / -
Beam distance:	184m / 603.7'
Water resistance:	IPX-4
Impact resistance:	1m / 3.28'
Battery:	Built-in Rechargeable 3000mAh Battery (included)
Dimensions:	Light body: 33mm * 33mm * 33mm battery pack: 63mm * 23mm * 23mm total: 116.6oz (without battery)
Weight:	14g / 0.49oz (without battery)

NEXTORCH® myStar is a cutting edge light-weight rechargeable hands-free solution. Equipped with NEXTORCH® patented Fresnel lens, myStar achieves focus shift by simple rotation, meeting varied needs of close to distant field of view at night. The whole system is unbelievable light-weight and comfortable for long-time wearing. High volume lithium-ion battery pack ensures the high performance. An integrated red beacon on the battery pack functions as a safety feature, plus the built-in micro USB charging port facilitating convenient charging.

## LIGHT STAR

### HIGH PERFORMANCE LED HEADLAMP

Designed for hiking, climbing, riding, searching, caving and everyday activities

S.S.S.



The Light Star is a high performance LED headlamp, winner of the Silver Award at the Outdoor Industry Awards in 2013. The Light Star has an on and off "click switch" on the flip-top cover, which delivers an easily adjustable light at different angles and brightness. There is also a side button allowing further adjustment of the brightness, enabling you to light things up from different angles. A real asset to any expedition and a great way to enjoy the outdoors even more!

## VIKER STAR

### HIGH OUTPUT MULTI-MODE LED HEADLAMP

Designed for general maintenance, camping, hiking, climbing, caving and everyday activities

S.S.S.



The Viker Star is a high output headlamp with 3 practical modes that meets most outdoor and industrial needs. With its double-headband and battery placement on the back of the head, the Viker Star is stable and comfortable to wear. 225 lumen output, up to 47 hour runtime, and a multi-direction illumination lamp head, the Viker Star is perfect for camping, hiking, climbing and caving.

## 200 LUMENS



\*INCLUDED

### FEATURES

- \* Max output 200 Lumens
- \* Button Switch used to adjust the brightness or initiate S.O.S. mode



\*Axis Outdoor Industry Design Award 2013 Silver Award

### SPECIFICATIONS

LED:	CR16 3P-G2 RS LED
Mode:	200lm / 160m / 135 lm / S.O.S.
Runtime:	34/50m / 9h / 100h / -
Beam distance:	34m / 300.4f
Water resistance:	IPX-4
Impact resistance:	1m / 3.28'
Battery:	2*AAA (included)
Dimensions:	65mm * 35mm * 31mm
Weight:	49g / 1.72oz (without battery)

## 220 LUMENS



6 Colors Available

### FEATURES

- \* White LED provides max output, red LED provides gentler light for reduced eye strain
- \* 220 lumen max output; max runtime 98 hours
- \* 4 modes with Smart Memory Mode technology
- \* Hidden S.O.S. mode, initiated at a touch

### SPECIFICATIONS

LED:	1*WHITE LED, 2*RED LED
Mode:	220lm / 92lm / 91m / RED / S.O.S.
Runtime:	2h/20/30s / 9h / 98h / -
Beam distance:	72m / 239.6f
Water resistance:	IPX-6
Impact resistance:	1m / 3.28'
Battery:	3*AAA (included)
Dimensions:	55mm * 38mm * 32mm
Weight:	49g/1.72oz (without battery)

## 48 LUMENS



6 Colors Available



### APPLICATIONS

LED:	2*White LED, 1*Red LED
Mode:	48lm / 6m / RED / S.O.S.
Runtime:	8h / 48h / -
Beam distance:	16m / 52.4f
Water resistance:	IPX-4
Impact resistance:	1m / 3.28'
Battery:	2*AAA (included)
Dimensions:	55mm * 42mm * 21mm
Weight:	35g / 1.3oz (without battery)

## TREK STAR

### ULTRA BRIGHT MULTI-MODE LED HEADLAMP

Designed for hiking, climbing, camping, fishing, general maintenance and everyday activities. Low setting is ideal for reading in the dark without straining the eyes

S.S.S.



The Trek Star is our new lightweight ultra bright multi-mode LED headlamp, with a max output of a powerful 220 lumens. At less than half the weight of ordinary headlamps and multi-mode capability, including white and red LED output, preset with four lighting modes, our Smart Memory Mode technology remembers your mode preference. The Trek Star withstands temperatures between -25°C (-13°F to 140°F) and comes in your choice of 6 colors. The Trek Star is the perfect choice for outdoor and industrial usage.

## ECO STAR

### LIGHTWEIGHT MULTI-MODE LED HEADLAMP

Designed for camping, hiking, fishing, general maintenance and everyday activities. Low setting is ideal for reading in the dark without straining the eyes

S.S.S.



### FEATURES

- \* Lightweight, comfortable to wear
- \* 48 lumen max output; max runtime 105 hours
- \* 3 modes with Smart Memory Mode technology
- \* Hidden S.O.S. mode, initiated at a touch

The Eco Star is a lightweight multi-mode LED headlamp. It weighs only 35g (without battery), 61g (with 2\*AAA batteries), and is comfortable to wear. It meets a wide variety of lighting requirements with its white and red LEDs and 3 practical modes. The Eco Star will satisfy your outdoor and industrial lighting demands.

## TREK STAR UV

### ULTRA BRIGHT WHITE & UV LED HEADLAMP

Specialty designed for finding scorpions, detecting fraudulent currency, passports and IDs, criminal analysis, and hunting

S.O.S.



FL1 STANDARD



The Trek Star is our new lightweight ultra bright multi-mode LED headlamp, with a max output of a powerful 140 lumens. At less than half the weight of ordinary headlamps and multi-mode capability, including white and red LED output, preset with four lighting modes, our Smart Memory Mode technology remembers your mode preference. The Trek Star withstands temperatures between -25°C (-13°F) to 140°F and comes in your choice of 4 colors. The Trek Star is the perfect choice for outdoor and industrial usage.

## 140 LUMENS

### FEATURES

- \* UV LED used for finding scorpions, detecting fake
- currency and crime scene analysis
- \* White LED used for hiking, climbing, camping, general maintenance and everyday activities
- \* 140 lumen max output, max runtime 150 hours
- \* 4 modes with Smart Memory Mode technology
- \* Hidden S.O.S. mode, initiated at a touch

### SPECIFICATIONS

LED:	1*White LED, 2*UV LEDs
Mode:	140lm / 75m / 6 lm / UV light / S.O.S.
Runtime:	4:20min / 12h / 150h / — / —
Beam distance:	50m / 196.8ft
Water resistance:	IPX-4
Impact resistance:	1m / 3.2ft
Battery:	3*AAA (included)
Dimensions:	55mm * 38mm * 32mm
Weight:	49g / 1.72oz (without battery)

## ECO STAR UV

### LIGHTWEIGHT WHITE & UV LED HEADLAMP

Specialty designed for finding scorpions, detecting fraudulent currency, passports and IDs, criminal analysis, and hunting

S.O.S.



FL1 STANDARD



### FEATURES

- \* UV LED used for finding scorpions, detecting fake currency and crime scene analysis
- \* White LED used for hiking, climbing, camping, general maintenance and everyday activities
- \* 30 lumen max output, max runtime 105 hours
- \* 3 modes with Smart Memory Mode technology
- \* Hidden S.O.S. mode, initiated at a touch

Eco Star UV is our new lightweight White & UV LED headlamp. The UV LED is specially designed for finding scorpions, detecting fraudulent currency, passports and IDs, crime scenes analysis and hunting. Preset with three lighting modes, our Smart Memory Mode technology remembers your mode preference. With a max output up to 30 lumens and up to 105 hours runtime, the ECO STAR UV will satisfy your lighting demands.

## 30 LUMENS

### APPLICATIONS



### SPECIFICATIONS

LED:	2*White LEDs, 1*UV LED
Mode:	30lm / 5 lm / UV light / S.O.S.
Runtime:	5h / 105h / — / —
Beam distance:	30m / 98.4ft
Water resistance:	IPX-4
Impact resistance:	1m / 3.2ft
Battery:	2*AAA (included)
Dimensions:	54mm * 42mm * 21mm
Weight:	39g / 1.34oz (without battery)

## B10 NEW

### 4\*AA High Output Bike Light With Rectangular Spot

Designed for urban city and around-town commuting

## 420 LUMENS



**RECTANGULAR SPOT LENS TECHNOLOGY**  
Designed for optimal brightness and efficiency, delivers a powerful wide beam and whole-road lighting for greater visibility.



CHINA OUTDOOR INDUSTRY ANNUAL AWARDS



FL1 STANDARD



The NEXTORCH<sup>®</sup> B10 is a perfect light for riding, urban city and around-town commuting. It features patented RSL™ technology to provide a unique rectangular spot, delivering a 160 degree wide beam and whole-road lighting for greater visibility to guarantee rider's comfort and safety. The anti-glare design allows distinguishing the areas to be lit and those to be left dark, illuminating the road without disturbing pedestrians. The B10 has 4 modes, max output up to 420 lumens powered by 4AA batteries. A low battery indicator keeps you from getting caught in the dark. The bracket that allows you to quickly and easily attach the B10 to virtually any handlebar.

### FEATURES

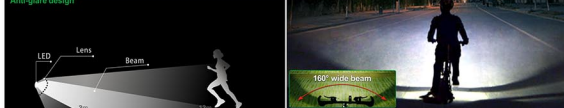
- \* Patented RSL™ (Rectangular Spot Lens) technology, delivering a 160 degree wide beam and whole-road lighting for greater visibility
- \* The anti-glare design allows distinguishing the areas to be lit and those to be left dark, illuminating the road without disturbing pedestrians
- \* 4 modes, max output up to 420 lumens powered by 4AA batteries
- \* The bracket that allows you to quickly and easily attach the B10 to virtually any handlebar

### SPECIFICATIONS

LED:	CREE® XP-G2 S2 LED
Mode:	420lm / 245lm / 93lm / S.O.S.
Runtime:	1h:25min / 8h:21min / 22h / -
Beam distance:	75m / 246.0ft
Water resistance:	IPX-6
Impact resistance:	1m / 3.2ft
Battery:	4*AA (included)
Dimensions:	100mm * 97mm * 34mm
Weight:	160g / 5.64oz (without battery)

### APPLICATIONS

Anti-glare design





# GLO-TOOB™

Born to challenge the harshness of maritime and submerged operations, GLO-TOOB™ is one of its kind. This beacon-shaped light gives out clear signaling even in the darkest waters. With 5 different colors and IR mode available, GLO-TOOB™ lights up a safe passage.



GT-AAA TOOB-AAA TOOB-AA GT-LITHIUM GT-LITHIUM IR

	GT-AAA	TOOB-AAA	TOOB-AA	GT-LITHIUM	GT-LITHIUM IR
Number of Modes	3 Modes	3 Modes	3 Modes	11 Modes	11 Modes
Battery Type	1*AAA	1*AAA	1*AA	1*CR123A	1*CR123A
Colors Available					
Runtime	4-15 h	5.5-27 h	12-48 h	24-100 h	20-80 h
Depth Rating	60m (200 ft)	200m (656 ft)	200m (656 ft)	3500m (11500 ft)	3500m (11500 ft)
Dimensions	75mm * 19mm	71mm * 19mm	77mm * 19mm	80mm * 24mm	80mm * 24mm
Weight	34g / 1.2oz	39g / 1.38oz	50g / 1.76oz	62g / 2.18oz	62g / 2.18oz

## 1040 LUMENS

### APPLICATIONS



### SPECIFICATIONS

LED	CREE® XM-L2 U2 LED
Mode	500m / 150m / 200m / 80m / strobe / SOS
Runtime	1h / 1h30min / 2h / 1h50 / ...
Beam distance	280m / 1050ft
Water resistance	IPX4 (2m)
Impact resistance	3m / 9.8ft
Battery	2*CR123A (included) / 1*18650
Dimensions	147mm * 34mm * 25.6mm
Weight	150g / 4.35oz (without battery)

## 320 LUMENS

### APPLICATIONS



### SPECIFICATIONS

LED	CREE® XP-G2 R5 LED
Mode	100m
Runtime	140min
Beam distance	143m / 469.16'
Water resistance	IPX4 (10m)
Impact resistance	1m / 3.28'
Battery	2*CR123A (included)
Dimensions	120mm * 32mm * 34mm
Weight	115g / 4.03oz (without battery)

## 160 LUMENS

### APPLICATIONS



### SPECIFICATIONS

LED	CREE® XP-G2 R3 LED
Mode	160m
Runtime	4h
Beam distance	155m / 508.53'
Water proof	IPX4 (10m)
Impact resistance	1m / 3.28'
Battery	2*CR123A (included)
Length	120mm * 25mm * 34mm
Weight	115g / 4.03oz (without battery)

## TA40 SET

1040 LUMEN ULTRA BRIGHT TACTICAL FLASHLIGHT



### FEATURES

- \* Max output up to 1040 lumens
- \* 7 modes for the most common tactical flashlight applications
- \* Powered by two CR123A lithium batteries or one ultra-high capacity 18650 li-ion battery (includes charging port for direct recharging)
- \* DUO SWITCH with 'Click and tap' function for easy momentary activation or mode switching

### ACCESSORIES INCLUDED

- RM85 scout mount or RM25 rail mount
- TS4-L Remote pressure switch
- 2\* CR123A batteries



### FL1 STANDARD



## T6L R5 SET

SUPREME TACTICAL LED FLASHLIGHT SET

### FEATURES

- \* 320 lumen high output
- \* 10m water-proof
- \* 1m shock-proof

### ACCESSORIES INCLUDED

- RM81 Shotgun mount
- TS6-L Remote pressure switch
- V66 Additional Xenon bulb
- 2\* CR123A batteries



### FL1 STANDARD



## T6A LED SET

BEST-SELLER FOR THE HUNTING MARKET

### FEATURES

- \* Max light output up to 160 lumens
- \* 10m waterproof
- \* Patented momentary on / off tailcap

### ACCESSORIES INCLUDED

- RM81 Shotgun mount
- TS6-L Remote pressure switch
- V66 Additional Xenon bulb
- 2\* CR123A batteries



### FL1 STANDARD



# NEXTORCH® ACCESSORIES

## CARRYING ACCESSORIES

### Tactical Holster

**NEW**  
360 degree rotatable.  
Quick draw holster with a lever side lock.  
Firearm: 7" pistol or spear.  
For T6A, T6B, T6C, T6D, T63, T6A,  
my torch S 18650, my torch S XL.

### TC1

Travel Case with belt loop  
For Light Star, Trek Star, Trek star UV,  
Eon Star, Eon Star UV.

### V1

**DURABLE NYLON HOLSTER**  
For my torch S 18650, my torch S 3AAA,  
my torch S XL, T6A0, T6A,  
T63, T6A, T6A LED.

### V2

**DURABLE NYLON HOLSTER**  
For my torch 5 AA,  
my torch S 2AA, E1, K2

### LT2113

**DURABLE NYLON HOLSTER**  
For my torch S 18650, my torch S3AAA,  
T6A0, T6A, T63, T6A, T6A LED.

### V1438

**DURABLE NYLON HOLSTER**  
For my torch S 5AA, T6A, T6A LED.

### G46-A

**NYLON LANYARD**  
For T6A, T6A LED, my torch S Series

### V4018

**STAINLESS STEEL™ CLIP**  
For GL10, K10, K20, K1, K2, K3

## GUN MOUNT

### HM1

Quick Attach / Release Helmet Mount 360 Angle Rotatable  
Fits flashlight body size: 18mm-35mm (0.71"-1.38")  
For T6A0, T6A, T6P, T6A, T6A LED, P6A,  
T63, my torch S Series

### TF1

**QUICK ATTACH / RELEASE HOLDER**  
360 Angle Rotatable  
For T6A0, T6A, T63, T6A,  
T6A LED or any 0.9"-1" body size flashlights

### BM1

Quick Tighten / Release Bike Flashlight Mount  
360 Angle Rotatable  
Fits flashlight body size: 23mm-28mm (0.9"-1.1")  
Fits stem pipe size: 22mm-25.6mm (0.87"-1.0")  
For T6A0, T6A, T63, P2AAA,  
my torch S 18650, my torch S 3AAA

## BATTERY

### 3400mAh 18650

3.6V 3400mAh Rechargeable Li-Ion Battery  
55% higher capacity, compatible for  
all 18650 flashlights

### 2600mAh 18650

3.7V 2600mAh Rechargeable Li-Ion Battery  
compatible for all 18650 flashlights

### CR123A

3V CR123A Lithium Battery  
(Non-rechargeable)

## MAINTENANCE

### LC6

**LENS CLEANING**

### SL6

**SILICON GREASE**

## BULB

### V66

6.0V Xenon Bulb  
For T6, T6A, T6A LED.

### L66 R5

Cree® R5 LED Upgrade-single Output.  
Max output up to 320 lumens.  
T6A, T6A LED, T6L R5.

### L99

3W Cree® R5 LED  
Upgrade - Single Output

### L99 R5

3W Cree® R5 LED  
Upgrade - Single Output

## REMOTE/PRESSURE SWITCH

### UC1

Micro USB Sync Charger Cable  
6 inch (about 15cm) flat line  
Synchronize data  
Charge your device  
For carrying

### UC2

Micro USB Sync Charger Cable  
2 ft (about 60cm) flat line  
Synchronize data  
Charge your device  
For daily use

### UC3

Micro USB Sync Charger Cable  
8 ft (about 240cm) flat line  
Synchronize data  
Charge your device  
For extra long distance use

### UCC

Micro USB Sync Charger Cable Combo  
0.5ft, 2ft, 8ft  
(about 15cm, 60cm, 240cm) flat line  
Three length lines, one-stop solution  
for synchronizing and charging

### UC4

T6A USB Charger Cable  
40cm (15.74") in length  
For T6A0, T6A

### DC1

**PREMIUM COMBO PACK**  
USB Power Adapter and In-car  
Charger Adapter  
For my torch Series, P6A, Saez torch3,  
Saez torch 1

### DC3

**1"18650 WALL CHARGER**  
For P6A, T6A, T63, Saez Torch 1

### CC3

**1"18650 IN-CAR  
CHARGER**  
For P6A, T6A, Saez Torch 1

### CC7

**2"18650 IN-CAR  
CHARGER**  
For P6A, T6A, Saez Torch 1

### 18650 Charger Kit

**2600mAh 18650 Rechargeable**  
Li-Ion battery with In-car &  
Direct Chargers  
For T6A0, T6A, T63, P6A,  
T6A0 SET, T63 SET, Saez Torch 1

# DISPLAYS



Flashlight  
Point-Of-Sale Display



Flashlight  
Point-Of-Sale Display



Saint Torch  
Point-Of-Sale Display



K1/K2  
Counter Stand



ECO STAR  
Counter Stand



S-Series  
Counter Stand



Instant-Info Lightning  
Counter Stand



GLO-TOOB™ Point-Of-Sale Display



GLO-TOOB™ Counter Stand



T/P Series Counter Stand



myTorch Counter Stand



Point-Of-Sale Display

# NEXTORCH®

Proud to be a voting member of



The Portable Lights American Trade Organization (PLATO) was formed by companies involved in the manufacturing and selling of portable lighting tools to promote the interests of the industry and the common business interests of the companies that comprise this industry. It is the first trade association of its kind in the portable lighting industry. PLATO will help move the industry forward by performing a variety of functions, including:

- Help enforce the accurate and transparent use of industry standards, such as the ANSINEMA FL-1 Standard
- Assist in developing other industry product and safety standards
- Help guard against false advertising and similar unfair trade practices in the industry
- Provide an educational forum for members and supply educational materials
- Represent the industry to the public and to the government



## THE ANSI-NEMA STANDARD

The USA National Electrical Manufacturers Association (NEMA) publishes the ANSI/ NEMA FL 1-2009 Flashlight Basic Performance Standard, the first and most recognized flashlight industry standard. It introduces definitions and testing methods for flashlight basic performance as well as associated marking. NEXTORCH® products strictly follow and support the ANSI NEMA Standard guidelines, guaranteeing exceptional product quality.

ANSI-American National Standard Institute NEMA-National Electrical Manufactures Association



Total Light Output  
(Lumens)



Maximum Run Time  
(Per fresh set of batteries)



Beam Distance  
(1 meter = 1.1 yards = 3.3 feet)



Peak Beam Intensity



Impact Resistant Height  
(Drop-tested onto concrete from this height without damage to function)



Extreme Weather Resistance  
(Rain / Storm / Wind)



Waterproof  
(Submersible to this depth for 30 minutes without damage)

## THE NEXTORCH. NO-HASSLE PROMISE

We keep your NEXTORCH® flashlights running smoothly

Our professional designers and engineers are provided with advanced and comprehensive testing equipment in our onsite Test Lab. Testing procedures follow ANSI standard to provide reliable indoor testing results. We also conduct outdoor tests and reviews, and carry out field usage "beta testing" with professional and amateur flashlight enthusiasts. Our products are put through the grind, from everyday use to the toughest environments. Our products are given a thorough inspection before they are delivered to our customers for tasks varying from routine and repetitive to critical and urgent.

### NO HASSLE GUARANTEE

NEXTORCH. warrants that if you, our customer, has a defective unit due to manufacturing and/or workmanship, we will repair or replace it quickly and for free. That's a lifetime guarantee. Exceptions noted below.

Chargers and rechargeable batteries are covered within one year from the date of purchase.

Our warranty does not cover consumables or normal wear-and-tear, or damage resulting from abuse, alterations, unauthorized repairs, or contrary to NEXTORCH's user manuals.

To help protect your investment, NEXTORCH. offers reasonable rates to repair damage to our products not covered by our warranty. You will be provided with a quote for approval before work begins.

### WARRANTY CLAIMS

NEXTORCH. will repair or replace any defective NEXTORCH. flashlight, please contact your local dealer or send an email to [info@nextorch.com](mailto:info@nextorch.com) (for International outside the USA) or [usa@nextorch.com](mailto:usa@nextorch.com) (within the USA).

### WARRANTY DISCLAIMER

The above warranty is exclusive, and to the extent permitted by applicable laws, shall be in lieu of all other warranties, express or implied, including, without limitation, any warranty of merchantability or fitness for a particular use or purpose. NEXTORCH. disclaims any and all liability for product malfunctions. Physical injuries, or property damage that result in a whole, or in part, from the criminal, negligent, or improper use of the product, or from modifications or alterations thereto. In no event shall NEXTORCH. be held liable for any incidental, special, or consequential damages relating to the purchase, use, or performance of any NEXTORCH. product.