



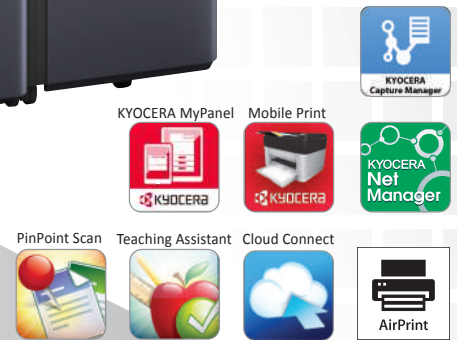
Document Solutions

> PRINT > COPY > SCAN > FAX

TASKalfa 5003i
TASKalfa 6003i

MONOCHROME MULTIFUNCTION
PRODUCT
FOR A4/A3 FORMAT

FULL FUNCTIONALITY DEPENDABLE AND VERSATILE



- Sharp image quality with real 1,200 x 1,200 dpi printing resolution.
- Quick first copy time in just 3.4 seconds and fast warm up time 17 seconds*.
- Standard 320GB hard disk capacity and 4GB RAM to meet heavy duty tasks without additional hard drive.
- Support A6 original scanning from Document Processor with fast dual scan speed up to 220/220 ipm A4 Mono/Color** to facilitate digitalization of document for easy storage and retrieval.
- Support SRA3 size (320mm x 450mm) & 300g/m2 paper from standard cassette.
- Allow Banner Print and Scan for easy in-house banner production.
- Semi auto self-closing paper cassette.
- Support different types of robust optional Finisher.

*For TASKalfa 6003i

** When using optional Document Processor DP-7130



Born to be Extraordinary

KYOCERA Document Solutions is Extraordinary for

- Broad Range of Multifunction Devices and Printers
- Optimized Total Cost of Ownership (TCO)
- Reliable with Long Life Drum and Parts
- New and Advanced Technology

KYOCERA Document Solutions strives to be a company that contributes to the society and demonstrates “Customer First” principle by providing customers with maximum value to increase their satisfaction. By adhering to the mission of producing document management devices that take balance between “Economy” and “Ecology”, KYOCERA Document Solutions succeeds to develop document management devices with advanced technologies which help customers to optimize office productivity and efficiency at a low total cost of ownership and, at the same time, improving environmental performance.

Exceptional Reliability and Dependable

These new TASKalfa models are prominent for top reliability and productivity and to increase work efficiency. Support KYOCERA HyPAS-enabled solutions platform, these devices allow seamless integration with customized workflow solutions to streamline complex tasks, manage costs, and enforce high security.

Robust and Versatile Paper Handling Options for Your Choice

DP-7130 Document Processor (Optional)
Up to 270 sheets One-path duplex scanning and copying with double paper feed detector

DP-7110 Document Processor (Optional)
One-path duplex scanning and copying for up to 270 sheets

MT-730(B) for DF-7130/ DF-7110 (Optional)
7 bins Mailbox Sorter

JS-7100 Inner Job Separator (Optional)
For max. 100 sheets

DF-7100 Inner Finisher (Optional)
For max. 500 sheets*

AK-7110: Paper Exit Path for Finisher (Optional)
For attachment with Finisher

DF-7130 Finisher (Optional)
For max. 4,000 sheets with up to 100 sheets Staple

DF-7110 Finisher (Optional)
For max. 4,000 sheets

BF-730 Booklet Folder for DF-7110 (Optional)
For booklet

DF-7120 Finisher (Optional)
For max. 1,000 sheets

DP-7100 RADF Document Processor (Optional)
For max. 140 sheets

Keyboard Holder 10 (Optional)
For holding keyboard

DT-730(B) (Optional)
Document Tray

Intuitive 10.1 inch Color Touch Panel NK-7120 Numeric Key (Optional)
Easy-to-view: 15°-90° adjustable angles

Card Reader Holder
For IC Card Authentication

Multi-Purpose Tray
For max. 150 sheets

Banner Guide 10 (Optional)
Guide for banner print

PF-7120 Paper Feeder (Optional)
3,000 sheets side deck (A4/Letter)

PF-7110 Paper Feeder (Optional)
For max. 1,500 sheets (A4/Letter) x 2

PF-7100 Paper Feeder (Optional)
2 cassettes with 500 sheets each

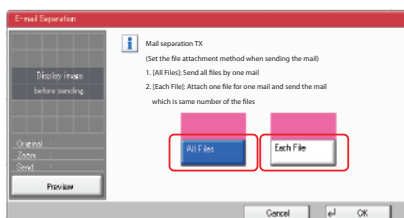
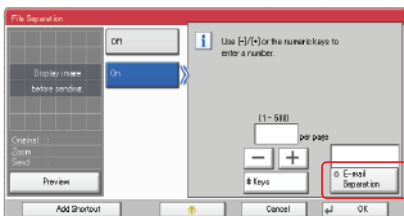


Striking Functionalities to boost Productivity and Work Efficiency at lower cost

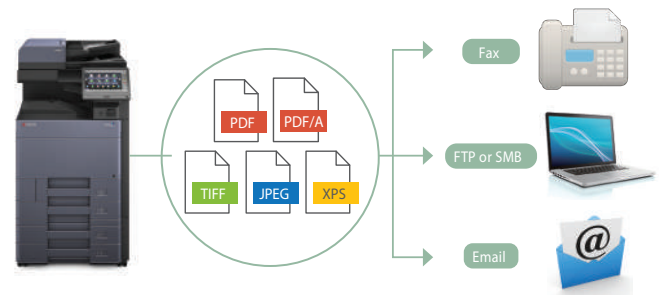
- **Program Shortcut:** Streamline scan and copy workflows with shortcut keys and up to 50 job programs.
- **Test Copy:** Reduce miscopy when copying large volume by using the Test Copy mode.
- **Duplex Preview:** Display both front and back sides before printing (Copy/Box Print function).
- **Skip Blank Page:** Blank page is skipped during making scans/copies to save unnecessary cost.
- **Dedicated Preset Copy Mode for Special Original Media:** Newspaper Copy, Technical Drawing Copy, ID Copy.
- **Prevent Bleed-thru:** Remove unwanted background when copying or scanning printed double-sized thin paper (e.g. newspaper, NCR paper, and magazine).
- **Carbon Copy:** Print an additional copy or copies of a document from a different media source or using a different media type.
- **Banner Send & Print:** Scan and produce banner with various paper weight in-house anytime in need (One-sided only).



- **Customize Scan Split:** Scan by split at specified page and allow send all scan files via one email or send files separately by emails.



- **USB Scan to/Direct Print:** Scan to or print directly from USB Memory in PDF, PDF/A, TIFF, JPEG or XPS format.
- **Scanned Image File Size Check:** Check the actual scanned document size does not exceed limit before actual sending to e-mail.
- **FTP/SMB/Email/Fax Multi-Sending:** Send document to different destinations (email addresses, folders, etc.) in a single scan operation.



- **Simple Fax Forwarding:** Forward any incoming fax to other destinations by Email, SMB or FTP (Optional).



- **i-FAX Sending (Optional):** Send and receive i-FAX without the mail service by installing Direct SMTP function.
- **Job Skip:** Automatically prioritize the error print job to avoid machine come to a halt in case of

1. Paper empty in specific tray
2. Mismatched paper size
3. Mismatched media type

Received Order Order of Received JOBS			
Sequence	Job	Paper Size	Status
1	0001	A3	NG
2	0002	A4	OK
3	0003	A5	NG
4	0004	A6	OK

JOB Execution Order Order of Printed JOBS			
Sequence	Job	Paper Size	Status
1	0002	A4	OK
2	0004	A4	OK
3	0001	A3	NG
4	0003	A5	NG

- **Job Finish Notice:** Send email notification to specified user when a copy/scan job is completed.





Key Features to Help Complete Tasks Easier and Faster

- **Intuitive 10.1 Inch Color Touch Panel with Easy Navigation:** Excellent clarity 10.1 inch color touch panel display with swivel type operability similar to smartphone and tablet and tiltable from 15 degree to 90 degree



- **Convenience to use Keypad:** With on-screen virtual numeric keypad and optional hardware keypad, users can type in with ease.
- **Customizable Home Screen:** All commonly used functions and applications are set as default on Home Screen. The Home Screen can be customized easily to meet different user (or Group User) needs for immediate access to commonly used functions.
- **Printer Driver's Quick Print Tab:** Create and save frequently used custom profiles as graphic icons to allow programming of complex jobs in one click.
- **Custom Box:** Ease-of-use Custom Box provides long term job storage at device, allowing users to securely print and store jobs on the device and output them when required.
- **Motion Detector:** Detect people approaching MFP to wake up from Energy Saving Mode automatically and return to the Energy Saving Mode after job is completed.



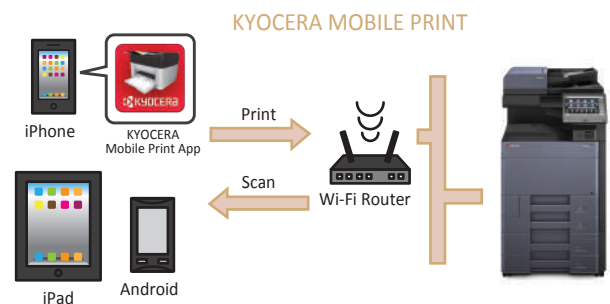
- **Semi auto self-closing cassettes:** Cassettes auto drawing to close within 40mm.



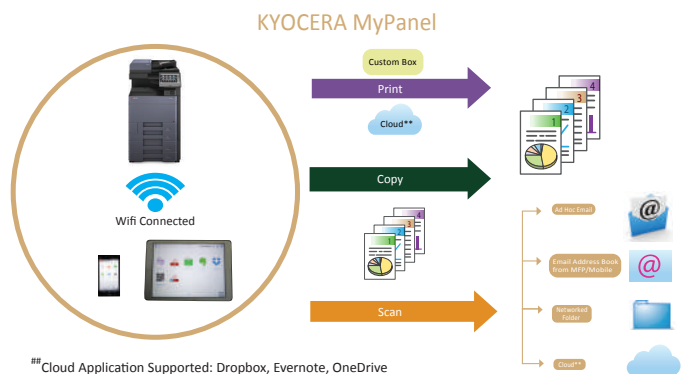
Smart Business Applications for Mobile Devices to Enhance Mobility

- KYOCERA Capture Manager:** A powerful document capturing software product that streamlines business workflow by digitizing documents. It enables to capture the documents from virtually any source – from an MFP, network scanner, Web browser, Email, hot-folder and smartphone. Once documents are captured, and it goes through image processing, and those processed documents can be converted into a variety of formats, such as text searchable PDFs or Office format, and finally distribute to different business systems (Email, Folder, Cloud, DMS/ECM, ERP).

- KYOCERA Mobile Print:** An app-based solution that enables users to simply and conveniently print documents, web pages, and images on demand from virtually anywhere, on their Apple and Android smartphone and tablet devices to select KYOCERA MFPs and printers. Users can also scan files and images from same MFPs to their mobile devices. Our devices also support AirPrint for iPhone and iPad.



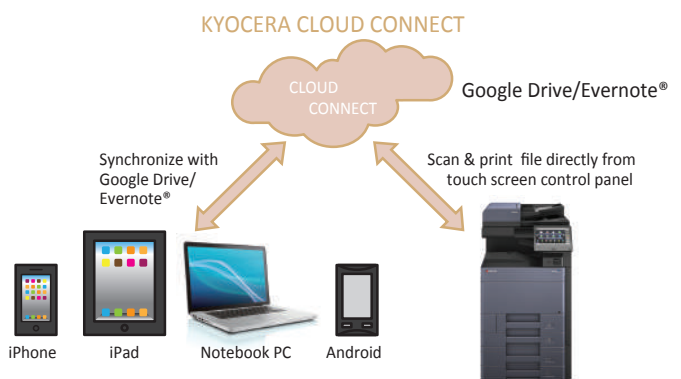
- KYOCERA MyPanel:** Use smartphone or tablet to connect a compatible networked KYOCERA printing device on your local Wi-Fi network wirelessly. Users can perform COPY/PRINT/SCAN from Custom Box or Cloud^{###} by mobile devices with personalize settings.



- KYOCERA Cloud Connect (Optional):** Retrieve and print files in Google Drive and Evernote®, a cloud service provider, directly from any KYOCERA HyPAS-enabled MFPs. Users can even upload scanned files directly to Google Drive and Evernote® – directly from the MFP, without going through a computer..

- Support WiFi Direct:** Support IB-35 Wireless LAN (Optional), makes print/scan via AirPrint/Google Cloud Print/Mopria/KYOCERA Mobile Print/KYOCERA MyPanel much easier.

- NFC (Near Field Communication):** Built-in at Control Panel to connect with Android devices.





Diverse Document Secure System and Business Applications for Advanced Security

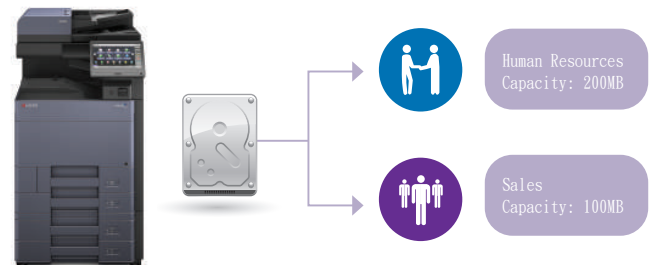
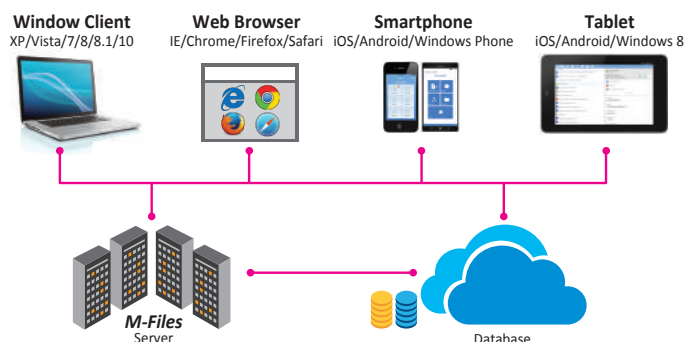
- **Password Protection Setting:** Allow administrator to set Password Policy to limit user access to designated capacity.

- **Private Print:** Release print job at the device by entering a preset four-digit access code when making a print at KYOCERA KX Driver.

- With the aid of **Network Authentication**, IT Department can manage user authentication easily by incorporating with centralized Authentication Server (NTLM, Kerberos, KYOCERA Net Manager*).

- **FAX Memory Overwrite (Optional):** Erase FAX memory after sending or receiving for confidentiality.

- **M-Files (Optional):** Manage all information e.g. documents, projects and business processes etc and adds intelligence by combining it with information from other systems (like SharePoint, Salesforces and SAP). This ensures you always find what you need, no matter what system you are using.



- **Security Watermark:** Distinguish original from copies and provides protection for sensitive document against duplication.

- **KYOCERA Data Security Kit:** Encrypt data before storing in the hard drive and automatically overwrite all data stored in the hard drive once you have finished printing, copying and scanning.



- **Card Authentication Kit (Optional):** Prevent unauthorized data access to device, manage and control usage with IC Card Authentication.



Eco-Friendly

Design for energy savings

- **Fast warm up:** With the new IH fuser, the warm up time is shorter and power consumption is less.
- **Weekly Timer:** Allow administrator to preset the machine on and off time to maximize power savings.
- **EcoPrint:** Flexible EcoPrint setting to consume less energy and toner.
- **Energy Saver:** 1.0w or less power consumption at Energy Saver Mode.

Protect the environment

- Leading Long-life KYOCERA proprietary Amorphous Silicon (a-Si) Drum (with a lifetime of 600,000 prints), developer and component parts to reduce waste.
- Parts for Recycling.
- Non-toxic Materials.
- Quiet operation design for a comfortable Working Environment.
- Innovative black toner cartridge design with an expired one to be switched over for use as a waste toner container.



Eco Mark (Japan)



EcoLeaf Environmental Label (Japan)



Law on Promoting Green Purchasing (Japan)

KYOCERA Document Solutions has been actively promoting the acquisition of various environment labels, aiming to provide products that are safe and comfortable for our customers to use and have minimal environmental impact.



User-friendly Utilities and Applications to put Management and Control at Ease

Smart utilities for managed print and minimize related device management costs.

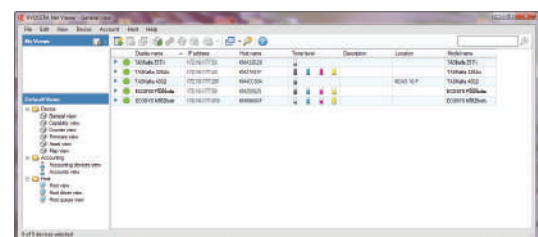
- **KYOCERA Command Center RX:** By using a web browser, the authorized administrator can access the built-in KYOCERA Command Center RX and check the operation status of the device, toner level, paper availability, as well as change settings related to security, network printing and advanced network setting etc.



- **KYOCERA Net Manager (Optional):** Protect confidential data, manage & control the overall output (copy/print/scan) and get detailed reports. Users can keep an overview of personal printing jobs with web browser. It greatly simplifies scanning processes as it automatically displays a set of personalized options.

By adding the Card Authentication Kit (Optional) for KYOCERA Net Manager, you are able to swipe ID Card to get print document directly. User administrator can also set the IC Cards to allow quick and secure access with pre-defined user restrictions such as color output restrictions and output quota.

- **KYOCERA Net Viewer:** A comprehensive network management tool used to monitor, maintain, and update up to 100 network printing devices locally and remotely. Through KYOCERA Net Viewer, administrators can simply install and update firmware on all KYOCERA connected devices while easily monitoring printed black/color pages, device configuration, accounting, toner usage, and alerts. By implementing KYOCERA Net Viewer, the manpower required to monitor connected devices is greatly reduced.



			Main Specifications	
Model			TASKalfa 5003i	TASKalfa 6003i
Main Function			Copy, Print, Scan, Fax (Optional)	
Writing Method			Semiconductor Laser	
CPU			T1024 (Dual Core) 1.2GHz	
Print Speed (A4) (Mono)			50 cpm	60 cpm
Scanning Speed (A4) 300dpi	DP-7100 (Mono/Color)	Simplex	80/80 ipm	
		Duplex	48/48 ipm	
Scanning Speed (A4) 300dpi Dual Scan	DP-7110 (Mono/Color)	Simplex	100/100 ipm	
		Duplex	180/180 ipm	
Scanning Speed (A4) 300dpi Dual Scan with Double Feed Detector	DP-7130 (Mono/Color)	Simplex	120/120 ipm	
		Duplex	220/220 ipm	
Memory			Standard 4GB (Max. 4GB)	
SSD/HDD Capacity			SSD 8GB (Standard) / HDD 320GB (Standard)	
HDD Data Security Kit			Data Security Kit(F)	
Warm Up Time			17 seconds	
Paper Capacity			2 x 500 sheets (Cassette) + 150 sheets (MPT)	
Paper Size	Standard	7,150 sheets (Main Unit + 2 x 1,500 sheets PF-7110 x1 + 3,000 sheets PF-7120 x1 + MPT)		
	Cassette	Min. A6R – Max. SRA3(320mm x 450mm); Cassette 1 Min. A6R – Max. A4R (Legal)		
Paper Weight	MPT	Min. A6R – Max. SRA3(320mm x 450mm) & Banner Print of 1,220mm		
	Cassette	52 – 300 g/m ²		
Duplex Printing	MPT	52 – 300 g/m ²		
	Cassette	Paper size: A6R – SRA3(320mm x 450mm); Paper weight: 64 - 256 g/m ²		
Output Capacity			Max. 500 sheets + 100 sheets face-down (with Inner Job Separator)	
Control Panel			10.1 inch Color Touch LCD Panel	
Dimension (W x D x H) (Main Unit)			602mm x 665mm x 790mm	
Weight (Main Unit)			Approx. 83 kg	
Power Consumption (Standard configuration)	Copy/Print Mode	740W		870W
	Stand-by Mode		50W	
	Energy Saver		0.7W	
Noise (ISO7779/ ISO9296)	Copy/Print Mode	71dB(A)		73dB(A)
	Stand-by Mode		35dB(A)	
Copy Functions (Standard)				
Copy Size			Max. A3 (Legal) – Min. A6R	
Resolution			600 x 600 dpi	
First Copy Time (Mono)			3.7 seconds	3.4 seconds
Zoom Ratio	Manual	25% - 400% (1% per Step)		
	Pre-defined	7R5E		
Multiple Copy			1 – 9999	
Print Functions (Standard)				
Resolution			1,200 x 1,200 dpi; 4,800 equivalent x 1,200 dpi level	
PDL			PRESCRIBE, PCL6 (PCL-XL, PCL 5e), KPDL3 (Postscript 3 compatible), XPS, OpenXPS, PDF Direct Print Ver. 1.7	
First Print Out Time (Mono)			4.3 seconds	3.8 seconds
Supported Protocol			TCP/IP, NetBEUI, FTP, Port 9100, LPR, IPP, IPP over SSL/TLS, WSD Print, Apple Bonjour	
Operating System Supported			Windows Server 2003, Windows Server 2008, Windows Server 2008 R2, Windows Server 2012, Windows Server 2012 R2, Windows XP, Windows Vista, Windows 7, Windows 8, Windows 8.1; Apple Macintosh OS X 10.5 or later; Linux	
Interface			USB 2.0 High Speedx1; Ethernet 10BASE-T/100BASE-TX/1000BASE-T; USB Host Interface (USB Host)x4; NFC TAGx1	
USB Memory Printing Format			TIFF, JPEG, PDF, XPS	
Mobile Printing			AirPrint, Mopria, KYOCERA Mobile Print	
Scan Functions (Standard)				
Color Selection			Auto Color (Color/Gray); Auto Color (Color/B&W); Full Color; Grayscale; Black & White	
Resolution			600dpi, 400dpi, 300dpi, 200dpi, 200x400dpi, 200x100dpi	
File Format			TIFF, JPEG, XPS, OpenXPS, PDF (MMR/JPG compression/High-compression PDF), PDF/A, Encrypted PDF, Searchable PDF (Optional)	
Image Type Mode			Text, Photo, Text + Photo, Text (Fine Line)	
Transmission Type			Scan to SMB; Scan to E-mail; Scan to FTP over SSL; Scan to USB; TWAIN Scan; WSD Scan	
Address Storage			2,000 addresses (Common address list), 500 groups (Group address list)	
Fax Functions (Optional)				
Original Size			Max. A3 (Legal) – Min. A6 (statement), Banner: 1,600 (A4)	
Coding Method			MMR, MR, MH, JBIG	
Transmission Speed			33.6 kpbs	
Memory			12MB	
DUAL FAX / Network FAX			Yes	
Consumables & Options				
Document Processor			DP-7100: 140 sheets Reversing Type; DP-7110: 270 sheets One-path duplex scanning Type; DP-7130: 270 sheets One-path Duplex Scanning Type with double paper feed detector	
Paper Feeder			PF-7100: 500 sheets x2; PF-7110: 1,500 sheets x2 (A4/Letter); PF-7120: 3,000 sheets large capacity side deck (A4/Letter)	
Finisher			DF-7100: 500 sheets Inner Finisher; AK-7110: Attachment Kit; DF-7120: 1,000 sheets Finisher; DF-7110: 4,000 sheets Finisher; DF-7130: 4,000 sheets Finisher with 100 sheets Staple PH-7C: Punch Unit for DF-7110/ DF-7120/DF-7130; PH-7120: Punch Unit for DF-7100; MT-730(B): 7 Bin Mailbox Sorter for DF-7110/ DF-7130; JS-7100: 100 sheets Inner Job Separator; BF-730: Booklet Folder for DF-7110; BF-9100: Booklet Folder for DF-7130; SH-10: Staple for DF-7100/DF-7120/BF-730; SH-12: Staple for DF-7110; SH-14: Staple for DF-7130	
Fax System			Fax System 12	
Internet FAX			Internet FAX Kit(A)	
Card Authentication			Card Authentication Kit(B) AC	
Gigabit Ethernet Board			IB-50	
Wireless LAN Interface			IB-35 (802.11 b/g/n/Wireless LAN/WiFi Direct)	
Embedded OCR			Scan Extension Kit(A)	
Banner Paper Feeding Guide			Banner Guide 10	
Numeric Key Pad			NK-7120	
Document Tray			DT-730(B)	
Keyboard Holder			Keyboard Holder 10	



KYOCERA Document Solutions Asia Limited
13/F, Mita Centre, 552-566 Castle Peak Road, Tsuen Wan, N.T., Hong Kong
Tel: +852-2496-5678 Fax: +852-2610-2063
www.kyoceradocumentsolutions.asia

*KYOCERA does not warrant that any specifications mentioned will be error-free. Specifications are subject to change without notice. Information is correct at time of going to press. All other brand and product names may be registered trademarks or trademarks of their respective holders and are hereby acknowledged.



KYOCERA Business Partner