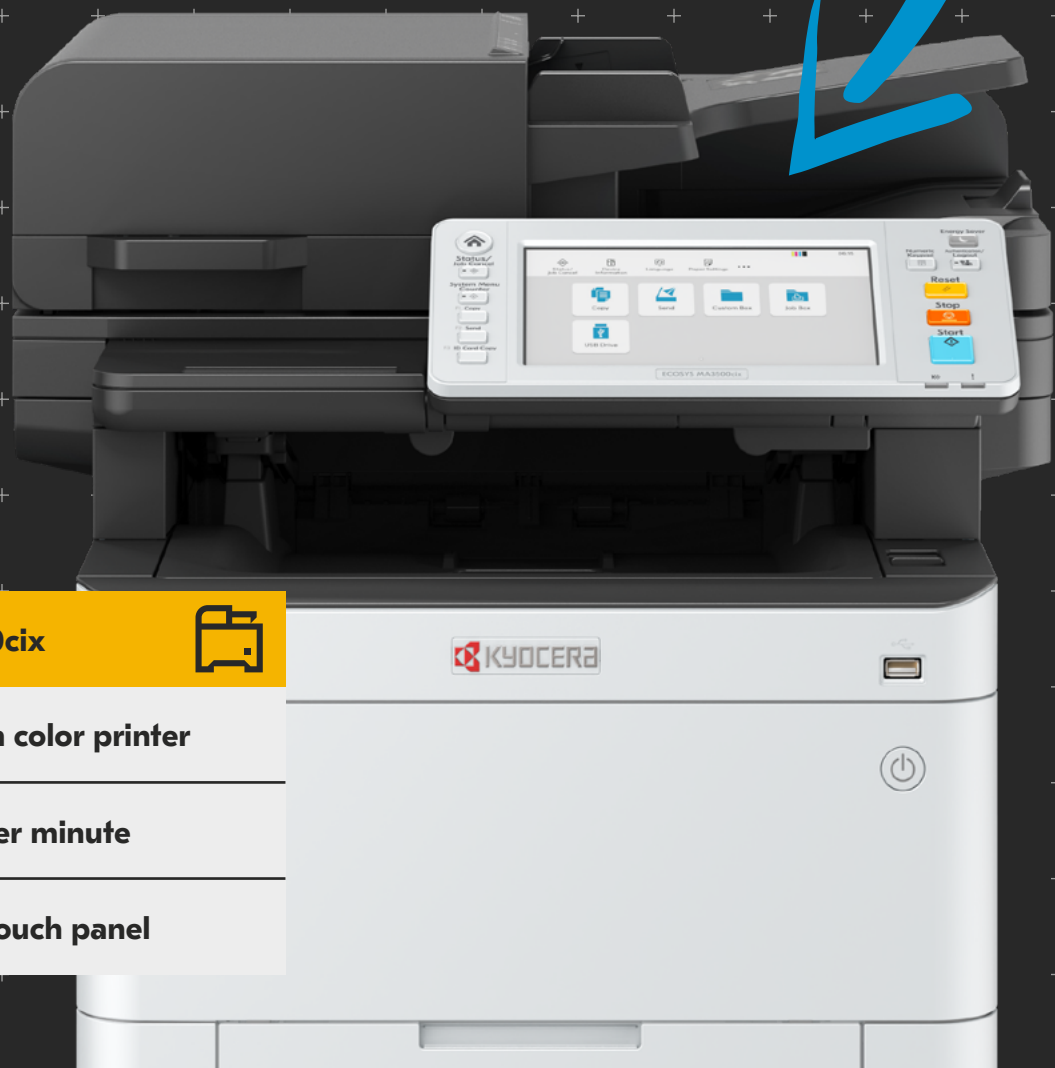


Optimize your workflows

Tailored to medium and large work groups, the ECOSYS MA3500cix is versatile color MFP that delivers everything your business needs to thrive and excel in today's fast-paced professional environment. Fast and reliable speeds in both color and monochrome prints make this versatile MFP the ideal digital tool to drive business efficiency.



ECOSYS MA3500cix



A4 multi-function color printer

Up to 37 pages per minute

7-inch full-color touch panel

Specifications

GENERAL

Configuration: Color MFP - Print / Scan / Copy
Black/Color - Letter: 37 ppm; Legal: 30 ppm; A4: 35 ppm
Duplex Print Speed: Letter 18.5 ppm; Legal: 15 ppm A4: 17.5ppm
Display: 7" Color Touch Screen Control Panel (TSI)
Warm Up Time: 26 Seconds or Less (Power On)
First Page Out Time:
Copy: 6.1 Seconds or Less Black, 7.2 Seconds or Less Color
Print: 5.7 Seconds or Less Black, 7.0 Seconds or Less Color
Resolution: 1200 x 1200 dpi¹, 9600 dpi x 600 dpi, 600 x 600 dpi
Memory: Std/Max: 1.5 GB / 3 GB
Duplex: Standard Stackless, Supports Statement to Legal (5.5" x 8.5" - 8.5" x 14"), 16 lb Bond - 90 lb Index (60 - 163gsm)
Dimensions / Weight: 18.9" W x 22.7" D x 22.5" H / 107 lb
Maximum Monthly Duty Cycle: 100,000 Pages per Month

POWER CONSUMPTION

Electrical Requirements: 120V, 60Hz, 9.9A; 220-240V, 50/60Hz, 5.4A
Typical Electricity Consumption (TEC): 120V: 0.34 Wh/week; 220-240V 0.34 Wh/week
Maximum (Including options): 120V: 1,327 W; 220-240V: 1,329 W
Copy / Printing: 120V: 544.9W/538.9W; 220-240V: 479.1W/449.1W
Ready Mode: 120V: 18.4W; 220-240V: 18.8W
Sleep Mode: 120V: 0.4 W; 220-240V: 0.5 W
Power Off: 120V: 0.1 W; 220-240V: 0.1 W

PRINTER SPECIFICATIONS

Standard Controller: ARM Cortex-A9 Dual core
1.2GHz + ARM Cortex-M3 100MHz
PDLs / Emulations: PRESCRIBE, PCL6 (PCL-XL PCL-5c), KPDL3, XPS, OpenXPS, KPDL-PDF
Fonts: PCL, KPDL, Cambria, Calibri and Bitmap
Barcodes: 1 Dimensional: 45 Type; 2 Dimensional: PDF417 1 Type
Windows OS Compatibility: Windows 8.1, Windows 10, Windows 11, Windows Server 2012/R2, 2016, 2019
MAC OS Compatibility: MAC OS X 10.9 or greater
Google Chrome OS: version 118 or higher
Linux OS Compatibility: Linux PPD
Interfaces: 10 BASE-T/100 BASE-TX/1000 BASE-TX, 2 High-Speed USB 2.0 Ports, 1 Expansion Slot;
Optional: Wireless LAN IB-37, IB-38, IB-51
Mobile Printing: KYOCERA Mobile Print, KYOCERA MyPanel, KYOCERA Print Service Plugin, WIA/Scan, ChromeOS(Scan), Apple AirPrint®, Mopria®
Network Print and Supported Protocols: TCP/IP, IPv4, IPv6, NetBEUI, FTP/FTPS, LPR, Port9100, IPP, WSD Scan/Print, DHCP, DNS, PNP-X, USB, LDAP, SNMP, SMTP, PDF Direct Print, PnP-X (WS-Discovery for WSD Print Service)
Drivers: KX Driver, PCL Uni Driver, KPDL, TWAIN

Driver, WIA Network, WIA USB, TWAIN Box, MAC Driver, Linux Driver, Chrome Driver
Utilities: KYOCERA Net Direct Print, File Management Utility, KYOCERA Print Center, KYOCERA Net Viewer, KYOCERA Device Manager, ID Register, Scan to Folder Setup Tool for SMB, Web Installer, Quick Network Setup, Maintenance Menu, Kyocera Net Manager (Pro & Basic), ID Register, Wi-Fi Setup Tool, Command Center RX; KYOCERA Fleet Services (KFS)
Additional Print Features: HyPAS capable², EcoPrint, Private Print, Proof and Hold, Quick Copy and Job Storage², Gloss Mode, Border Erase, Prevent Color Bleed-thru, Background Density Adjustment; MPT: Banner Printing

SECURITY

Standard: Local & Network Authentication, IPsec, HTTPS, SNMPv3, IPPS, POP over SSL, FTPS and LDAPS, SMTP over SSL, Overwrite & Data Encryption with optional SSD, SHA-2, TLS 1.3

SCAN SPECIFICATIONS

Scan Type: Color and Black & White Scanner
Scan Resolution: 300 dpi x 300 dpi, 200 dpi x 200 dpi (Default), 200 dpi x 100 dpi, 600 dpi x 600 dpi, 400 dpi x 400 dpi, 200 dpi x 400 dpi
Scanning Functions: PC (SMB), email (SMTP), USB, FTP, WSD, TWAIN/WIA; Continuous Scan, Mixed Originals, Blank Page Skip, ID Card Copy, DP Auto Crop
File Formats: TIFF (MMR/IPEG compression), JPEG, PDF (MMR/IPEG compression), XPS, PDF/A-1,PDF/A-2, PDF (High compression), Encrypted PDF, OPEN XPS, Optional: MS Office & Searchable PDF with Scan Extension Kit (A)²
Scan Speeds: Simplex BW/Color: @300 dpi - 60ipm/40ipm; @600 dpi - 40ipm/20ipm
Duplex (DSDP) BW/Color: @300 dpi: 100ipm/80ipm; @600 dpi 60ipm/32ipm
Original Size: Min/Max: Glass/DP: Statement to Legal (5.5" x 8.5" - 8.5" x 14"); Banner: DP Up to 48"

COPY SPECIFICATIONS

Image Mode: Text, Photo, Text & Photo, Graphic/Map, Printer Output
Copy Quantity: 1- 999 / Auto Reset to 1
Job Management: 200 Address Book Records, 100 Department Codes, 100 One-Touch Keys, 20 Program Keys, 6 Shortcut Keys
Magnification / Zoom: Auto Zoom, Full Size, 7 Reduction, 5 Enlargement Preset Ratios, 25% - 400% in 1% Step Increments
Additional Copy Features: Auto Paper Select (APS), Color Balance, Auto Color Select (ACS), Background Density Adjustment, Auto Zoom, Auto Duplex, Continuous Scan, Blank Page Skip, ID Card Copy, Quiet Mode

DOCUMENT PROCESSOR

Type / Capacity: Dual Scan Document Processor (DSDP) / 100 Sheets
Acceptable Originals: Statement to Legal (5.5" x 8.5" - 8.5" x 14")
Acceptable Weights: Simplex / Duplex: 13 - 32 lb Bond (50 - 120gsm)

PAPER SUPPLY

Standard Paper Sources: Single 250 sheet Drawer, 100 Sheet Multipurpose Tray (20 lb. Bond)
Standard / Maximum Paper Sources: 2 / 5 Including Multipurpose Tray¹
Standard / Maximum Paper Capacity: 350 Sheets / 2,000 Sheets
Paper Output Capacity: 250 Sheets
Paper Size: Standard and MPT: Statement to Legal (5.5" x 8.5" - 8.5" x 14"), Custom
Paper Weight: Standard / Optional Drawers: 16 lb. Bond - 32 lb. Bond. (60 - 120gsm); MPT: 16 lb. Bond - 110 lb. Index (60 - 220gsm)
Input Materials: Plain, Preprint, Bond, Recycled, Thin, Letterhead, Color, Pre-punched, Thick, High Quality, Custom; MPT: Envelope, Coated, Cardstock, Transparency, Labels

PAPER HANDLING OPTIONS

PF-5150: Paper Feed Cassette (550 Sheet x 3)
Paper Size: Statement to Legal (5.5" x 8.5" - 8.5" x 14")
MPT: Envelope, Custom
Paper Weight: 16 lb Bond - 120 lb Index (60 - 220gsm)
Input Materials: Plain Paper, Bond Paper, Recycled Paper, Prepunched, Letterhead; MPT: Thick, Coated, Envelope
Dimensions / Weight: 15.5" W x 21" D x 4.6" H / 9.7 lbs

ADDITIONAL OPTIONS

Print Management: ThinPrint (UG-33)
Security: Optional: Card Authentication Kit (B)
SD Card: 16 / 32 GB
SSD: HD-17: 64 GB SSD / HD-18: 256 GB SSD / HD-19: 512 GB SSD
Wireless LAN: IB-37, IB-38, and IB-51 which does not support HyPAS or KFS
Additional NIC: IB-50 Dual Gigabit NIC
Optional Memory: 2 GB DIMM Memory (DDR3)
Other: Scan Extension Kit (A), USB Keyboard (Customer Supplied)
Barcode Flash Option for advanced barcode printing

Note:

¹At Reduced Speed
²Requires Optional SD Card or SSD

ECOSYS stands for ECOlogy, ECONomy and SYStem printing. With their long-life components, ECOSYS devices are designed to maximise durability and minimise the total cost of ownership with regard to maintenance, administration and consumables. The cartridge-free system means that only the toner has to be replaced regularly. The modular design concept allows you to add workflowenhancing functions as required. Integrated system software provides long-term crossnetwork compatibility. KYOCERA's long-life components cost you and the environment less.



KYOCERA Document Solutions America
225 Sand Road, PO Box 40008
Fairfield, New Jersey 07004-0008, USA
Tel: 973-808-8444



KYOCERA Document Solutions Partner

SEP2023MA3500cifx/VER1.0

kyoceradocumentsolutions.us

* KYOCERA Document Solutions does not warrant that any specifications mentioned will be error-free. Specifications are subject to change without notice. Information is correct at time of going to press. All other brand and product names may be registered trademarks or trademarks of their respective holders and are hereby acknowledged.

** Depending on the country