

Flathead Valley Section

The Purcell and Cabinet mountains are the dominant landforms. Perennial streams are common, as well as small lakes, bogs, and wetlands. The Kootenai River and the Clark Fork River are major waterbodies that pass through. Soils are generally moderately deep to deep with loamy to sandy textures. Most of the soil contains volcanic ash.

Annual precipitation ranges from 46 to over 254 cm (18 to over 100 in); most of the precipitation falls as snow; summers tend to be dry. Climate is cool-temperate with some maritime influence. Temperature averages 2–7°C (36–45°F), and the growing season ranges from 45 to 120 days. While maritime influences create relatively mild winter conditions, influxes of arctic air are frequent.

Communities are small and sparsely distributed. Timber harvest and recreation are important land uses, and livestock grazing and farming occur in some valley areas.

Table 1. Flathead Valley land use and land ownership.

Land use	Area (ha)	Area (ac)	Percent
Dryland Agriculture	7,260	10,679	4
Timberland	196,039	288,382	96
Water	301	443	<1
Total	203,601	299,505	100
Land ownership	Area (ha)	Area (ac)	Percent
USDI Bureau of Land Management	1,759	2,588	1
USDA Forest Service	143,115	210,528	70
Open water	1,066	1,567	1
Private	52,414	77,104	26
State of Idaho	5,320	7,826	3
Total	203,674	299,613	100

Species of Greatest Conservation Need in the Flathead Valley

Fishes

White Sturgeon (Kootenai River system) *Acipenser transmontanus*^a

Lake Chub *Couesius plumbeus*

Westslope Cutthroat Trout *Oncorhynchus clarkii lewisi*

Inland Redband Trout *Oncorhynchus mykiss gairdneri*

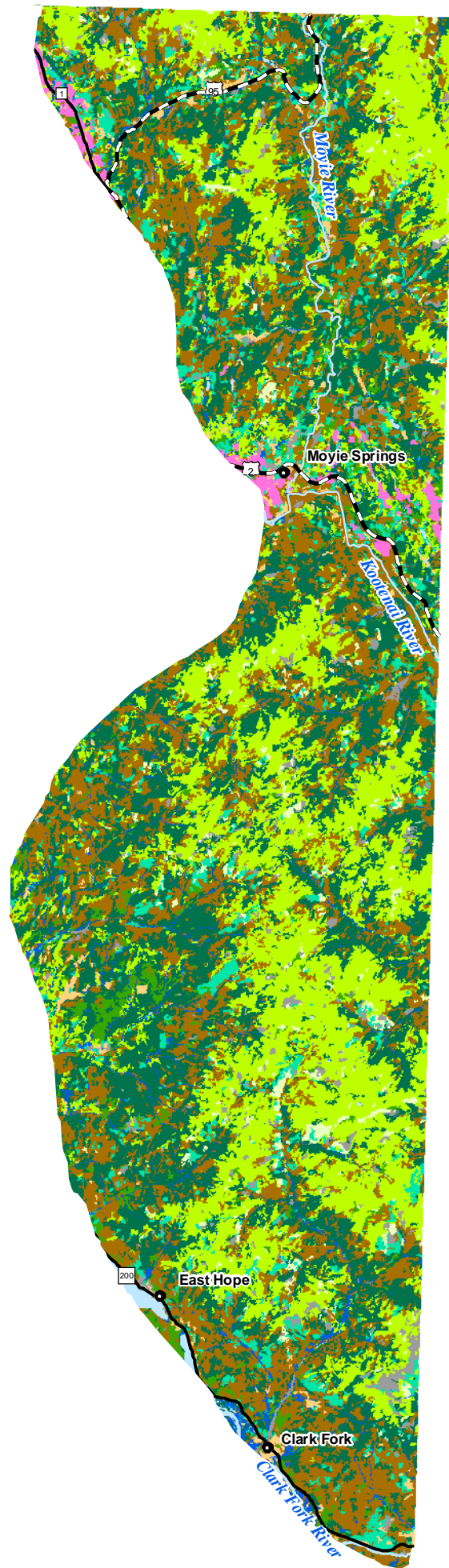
Kokanee *Oncorhynchus nerka*^a

Pygmy Whitefish *Prosopium coulterii*

Bull Trout *Salvelinus confluentus*^a

Burbot *Lota lota*^a

Flathead Valley Ecological Section Habitats



Habitats

- Arableland
- Dry Conifer Forest
- Dry Grassland
- Dune, Canyon, and Rockland
- Mesic Deciduous Shrubland
- Northern Mesic Conifer Forest

- Open Water
- Riparian Woodland
- Subalpine Forest
- Subalpine Grassland
- Upland Deciduous Forest

Town Population

- 0 - 20,000
- 20,001 - 200,000

Highways

- Interstate
- U.S. Highway
- State Route

I D A H O



16 September 2005
Idaho Conservation Data Center, Idaho Department of Fish and Game.

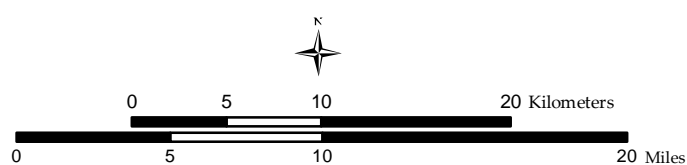


Figure 12. Flathead Valley habitats.

Amphibians

Northern Leopard Frog *Rana pipiens*
Wood Frog *Rana sylvatica*^a
Coeur d'Alene Salamander *Plethodon idahoensis*

Reptiles

Northern Alligator Lizard *Elgaria coerulea*

Birds

Northern Pintail *Anas acuta*
Harlequin Duck *Histrionicus histrionicus*
Hooded Merganser *Lophodytes cucullatus*
Common Loon *Gavia immer*
Red-necked Grebe *Podiceps grisegena*
Western Grebe *Aechmophorus occidentalis*
Bald Eagle *Haliaeetus leucocephalus*
Merlin *Falco columbarius*
Peregrine Falcon *Falco peregrinus*
Long-billed Curlew *Numenius americanus*
Flammulated Owl *Otus flammeolus*
Boreal Owl *Aegolius funereus*
Black Swift *Cypseloides niger*
Lewis's Woodpecker *Melanerpes lewis*
White-headed Woodpecker *Picoides albolarvatus*
American Three-toed Woodpecker *Picoides dorsalis*
Pygmy Nuthatch *Sitta pygmaea*
White-winged Crossbill *Loxia leucoptera*^a

Mammals

Pygmy Shrew *Sorex hoyi*
Townsend's Big-eared Bat *Corynorhinus townsendii*
Red-tailed Chipmunk *Neotamias ruficaudus*
Northern Bog Lemming *Synaptomys borealis*^a
Gray Wolf *Canis lupus*
Grizzly or Brown Bear *Ursus arctos*^a
Fisher *Martes pennanti*
Wolverine *Gulo gulo*
Canada Lynx *Lynx canadensis*
Caribou *Rangifer tarandus*^a
Mountain Goat *Oreamnos americanus*

Gastropods

Fir Pinwheel *Radiodiscus abietum*
Pygmy Slug *Kootenaia burkei*
Sheathed Slug *Zacoleus idahoensis*

Insects

A Stonefly *Pictetiella expansa*^a

^a Species for which the Flathead Valley represents a significant portion of their Idaho range.

Habitats in the Flathead Valley

Table 2. Flathead Valley habitats.

Habitat	Area (km ²)	Area (ac)	Percent
Arableland	204	5029	1
Upland Deciduous Forest	620	15,323	3
Dry Conifer Forest	5223	129,055	26
Northern Mesic Conifer Forest	6020	148,766	30
Subalpine Forest	5416	133,829	27
Mesic Deciduous Shrubland	1133	28,006	6
Dry Grassland	296	7324	1
Subalpine Grassland	364	9005	2
Open Water	95	2358	<1
Riparian Woodland	510	12,644	3
Dune, Canyon, and Rockland	478	11,804	2
Total	20,359	503,143	100

Priority Habitats and Associated Vertebrate Species in the Flathead Valley

Dry Conifer Forest

Fishes

White Sturgeon (Kootenai River system) *Acipenser transmontanus*

Lake Chub *Couesius plumbeus*

Westslope Cutthroat Trout *Oncorhynchus clarkii lewisi*

Kokanee *Oncorhynchus nerka*

Pygmy Whitefish *Prosopium coulterii*

Bull Trout *Salvelinus confluentus*

Burbot *Lota lota*

Amphibians

Northern Leopard Frog *Rana pipiens*

Wood Frog *Rana sylvatica*

Coeur d'Alene Salamander *Plethodon idahoensis*

Birds

Harlequin Duck *Histrionicus histrionicus*

Hooded Merganser *Lophodytes cucullatus*
Bald Eagle *Haliaeetus leucocephalus*
Merlin *Falco columbarius*
Peregrine Falcon *Falco peregrinus*
Boreal Owl *Aegolius funereus*
Black Swift *Cypseloides niger*
White-headed Woodpecker *Picoides albolarvatus*
American Three-toed Woodpecker *Picoides dorsalis*
Pygmy Nuthatch *Sitta pygmaea*
White-winged Crossbill *Loxia leucoptera*

Mammals

Pygmy Shrew *Sorex hoyi*
Townsend's Big-eared Bat *Corynorhinus townsendii*
Red-tailed Chipmunk *Neotamias ruficaudus*
Grizzly or Brown Bear *Ursus arctos*
Fisher *Martes pennanti*
Wolverine *Gulo gulo*
Canada Lynx *Lynx canadensis*
Caribou *Rangifer tarandus*
Mountain Goat *Oreamnos americanus*

Northern Mesic Conifer Forest

Fishes

White Sturgeon (Kootenai River system) *Acipenser transmontanus*
Lake Chub *Couesius plumbeus*
Westslope Cutthroat Trout *Oncorhynchus clarkii lewisi*
Kokanee *Oncorhynchus nerka*
Pygmy Whitefish *Prosopium coulterii*
Bull Trout *Salvelinus confluentus*
Burbot *Lota lota*

Amphibians

Northern Leopard Frog *Rana pipiens*
Wood Frog *Rana sylvatica*
Coeur d'Alene Salamander *Plethodon idahoensis*

Birds

Harlequin Duck *Histrionicus histrionicus*
Bald Eagle *Haliaeetus leucocephalus*
Peregrine Falcon *Falco peregrinus*
Boreal Owl *Aegolius funereus*
Black Swift *Cypseloides niger*
Pygmy Nuthatch *Sitta pygmaea*
White-winged Crossbill *Loxia leucoptera*

Mammals

Pygmy Shrew *Sorex hoyi*
Townsend's Big-eared Bat *Corynorhinus townsendii*
Red-tailed Chipmunk *Neotamias ruficaudus*
Northern Bog Lemming *Synaptomys borealis*
Grizzly or Brown Bear *Ursus arctos*
Fisher *Martes pennanti*
Wolverine *Gulo gulo*
Canada Lynx *Lynx canadensis*

Subalpine Forest

Fishes

White Sturgeon (Kootenai River system) *Acipenser transmontanus*
Westslope Cutthroat Trout *Oncorhynchus clarkii lewisi*
Kokanee *Oncorhynchus nerka*
Bull Trout *Salvelinus confluentus*
Burbot *Lota lota*

Amphibians

Wood Frog *Rana sylvatica*

Birds

Harlequin Duck *Histrionicus histrionicus*
Bald Eagle *Haliaeetus leucocephalus*
Peregrine Falcon *Falco peregrinus*
Boreal Owl *Aegolius funereus*
Black Swift *Cypseloides niger*
White-headed Woodpecker *Picoides albolarvatus*
American Three-toed Woodpecker *Picoides dorsalis*
White-winged Crossbill *Loxia leucoptera*

Mammals

Pygmy Shrew *Sorex hoyi*
Red-tailed Chipmunk *Neotamias ruficaudus*
Northern Bog Lemming *Synaptomys borealis*
Grizzly or Brown Bear *Ursus arctos*
Fisher *Martes pennanti*
Wolverine *Gulo gulo*
Canada Lynx *Lynx canadensis*
Mountain Goat *Oreamnos americanus*

Mesic Deciduous Shrubland

Birds

Merlin *Falco columbarius*

Upland Sandpiper *Bartramia longicauda*