



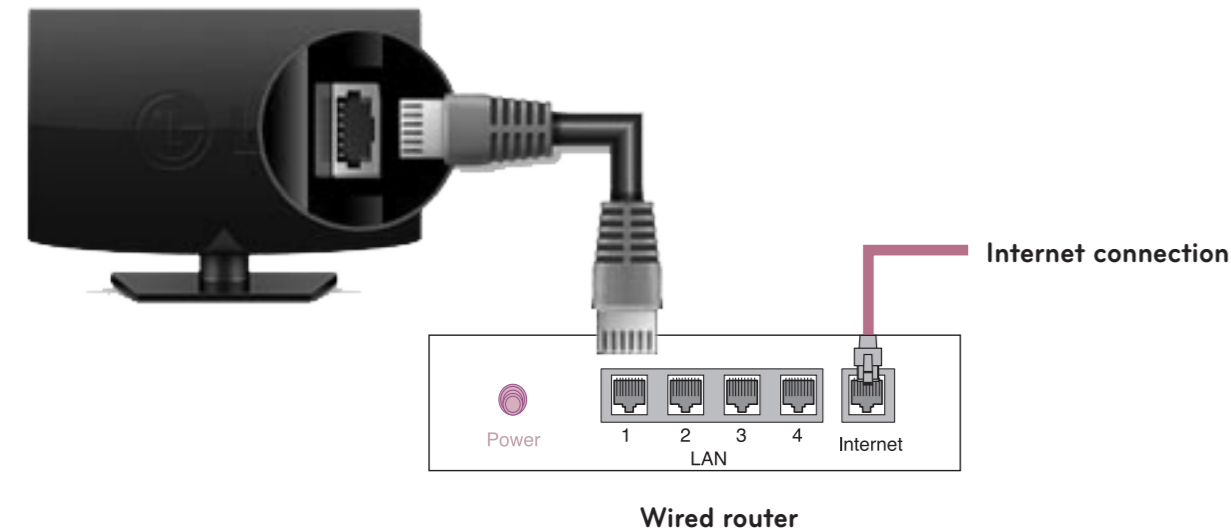
SMART TV Quick Setup Guide

* Image shown may differ from your TV.
* Image shown on a PC or mobile phone may vary depending on the Operating System (OS).

Wireless Network Connection



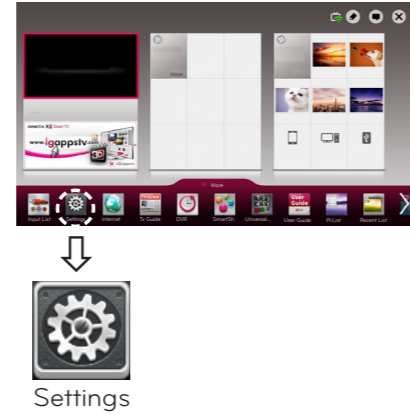
Wired Network Connection



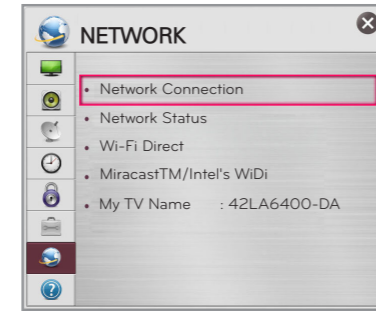
NETWORK SETTING

Premium Apps are pre-installed on the TV. These may vary by country.

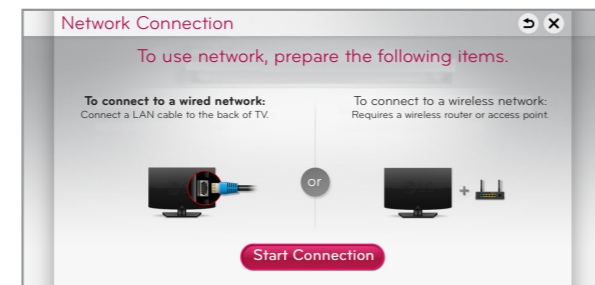
1 Press the **SMART** button to access the Smart Home menu. Select **Settings** and press **Wheel(OK)**.



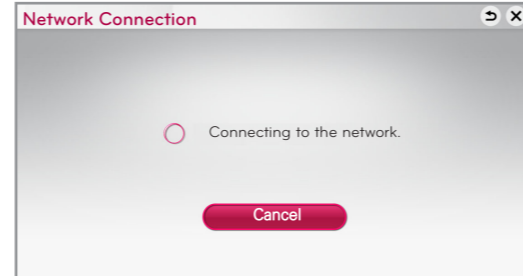
2 Select the **NETWORK** → **Network Connection** menu.



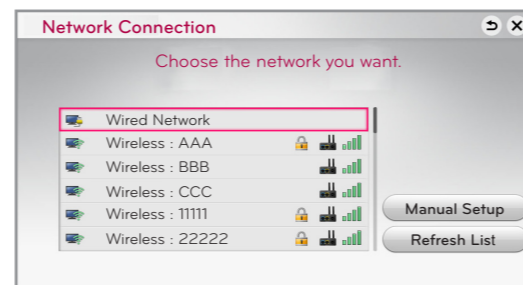
3 Select the **Start Connection**.



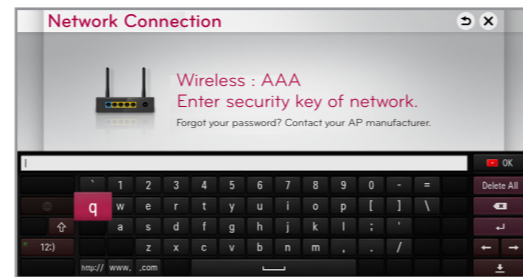
4 The device automatically tries to connect to the network available (wired network first).



If you select **Cancel** or it fails to connect to the network, the network list available is displayed. Choose the network you wish to use.

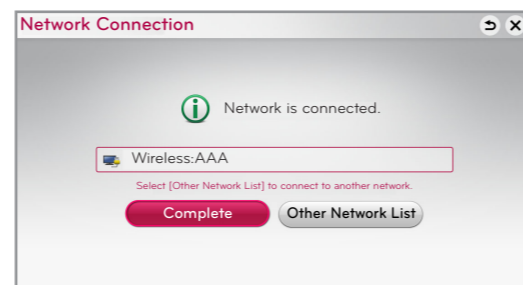


For wireless AP(Router) that have the **lock** symbol, you need to enter the security key.



5 The connected network is displayed.

Select **Complete** to confirm the network connection. If you select the **Other Network List**, the available network list is displayed again.



Troubleshooting Network Problems

1 Press the **SMART** button to access the Smart Home menu. Select **Settings** and press **Wheel(OK)**.



2 Select the **NETWORK** → **Network Status** menu.



Follow the instructions below that correlate to your network status.

Check the TV or the AP(Router).



When an ✓ appears on TV, but an X on Gateway.

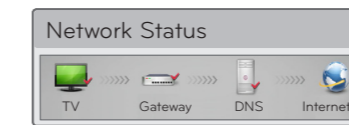
- 1 Check the connection status of the TV, AP(Router) and cable modem.
- 2 Power off and power on the TV, AP(Router) and cable modem.
- 3 If you are using a static IP, enter the IP directly.
- 4 Contact internet companies or AP(Router) companies.
 - Additional points to check when using a wireless connection
 - 1 Check the password for the wireless connection in the AP(Router) settings window.
 - 2 Change the AP(Router) SSID (network name) or the wireless channel.

Check the AP(Router) or consult your Internet service provider.



When an ✓ appears on TV and Gateway, but an X on DNS.

- 1 Unplug the power cord of the AP(Router), cable modem and try to connect after 5 seconds.
- 2 Initialize(Reset) the AP(Router) or cable modem.
- 3 Contact internet companies or AP(Router) companies.



When an ✓ appears on TV, Gateway and DNS, but an X on Internet.

- 1 Unplug the power cord of the AP(Router), cable modem and try to connect after 5 seconds.
- 2 Initialize(Reset) the AP(Router) or cable modem.
- 3 Check that the MAC address of the TV/AP(Router) is registered with your Internet service provider. (The MAC address displayed on the right pane of the network status window should be registered with your Internet service provider.)
- 4 Check the AP(Router) manufacturer's website to make sure your router has the latest firmware version installed.

SmartShare PC SW Installation & Setting

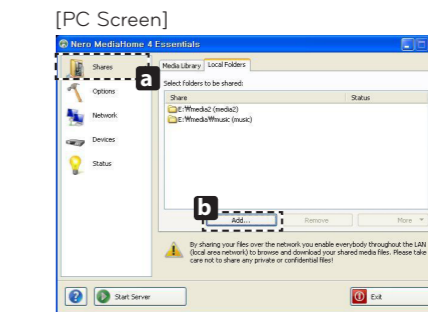
Install the **SmartShare PC SW(DLNA)** and **SmartShare PC SW(MediaLink)** program on your PC.

- 1 Go to www.lg.com. Then, select your region.
- 2 Select **SUPPORT**. Then, search for your model.
- 3 Select **Drivers & Software** or **SOFTWARE UPDATE**. Then, select **SmartShare PC SW(DLNA)**
- 4 You can run the program when installation is complete.

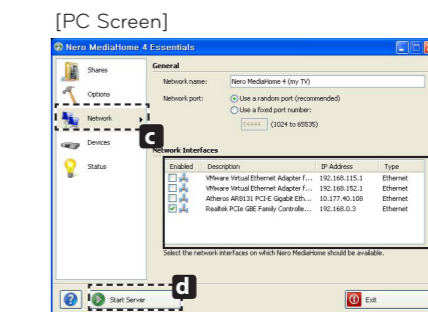
NOTE

- DLNA service is only available if TV and other devices are connected via a single AP(Router).

DLNA Connection to PC



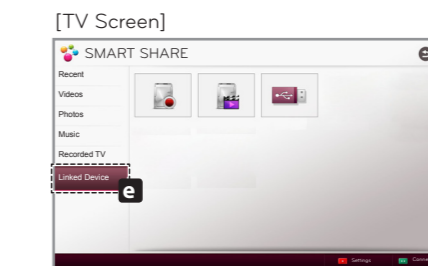
- 1 Start Nero Kwik Media and enable shared folders on your PC.
 - » **a** : Click the Share button.
 - » **b** : Click the Add button and select the desired folder. (Read the Owner's Manual to find out which file formats are supported by the DLNA function.)



2 Make sure that the PC network device is selected.

Enabled	Description	IP Address	Type
<input type="checkbox"/>	VMware Virtual Ethernet Adapter f...	192.168.115.1	Ethernet
<input type="checkbox"/>	VMware Virtual Ethernet Adapter f...	192.168.152.1	Ethernet
<input checked="" type="checkbox"/>	Atheros AR6131 PCI-E Gigabit Eth...	10.177.40.108	Ethernet
<input type="checkbox"/>	Realtek PCIe GBE Family Control...	192.168.0.3	Ethernet

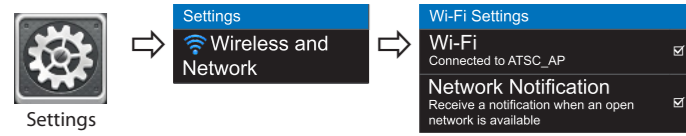
- » **c** : Click the Network button and check that the correct PC network device is selected. (At least one network device must be selected.)
- » **d** : Click the Start Server button.



- 3 You can view and enjoy shared content by using the TV's Smart Share function.
 - » **e** : Select the Linked device on the TV's Smart Share Card to enjoy content from your PC.

DLNA Connection to Smartphone

- 1 Check that Wi-Fi is enabled on your smartphone. To use DLNA, both devices must be on the same local network.



- 2 Install/run the app for sharing content on your smartphone (It's called SmartShare on LG phones).
- 3 Enable your smartphone to share content files with other devices.
- 4 Select the file type you want to play (movie, audio or photo).
- 5 Select a movie, music or photo file to play on the TV.
- 6 Add the selected file to the playlist.
- 7 Select a TV model name on which to play the files. (The TV model name is on a label on the side of the TV and in the customer support menu.)
- 8 Play the media file to view and enjoy it on your TV.

Updating the TV Firmware

HOME → Settings → SUPPORT → Software Update

By default, the TV will notify you of new software updates. You can use the Software Update menu to manually check for available updates.

Software Update	Set it to On . When an updated file is detected, the file is downloaded automatically.
Automatic Update Mode	If an update is available, the update automatically starts without prompting.
Check Update Version	Checks the latest update version installed. When a new update is available, the download process can be performed manually.

Tag On



Tag On

Touch the smartphone to the Tag On sticker.

• Using an LG smartphone with the NFC and Miracast functions, you can:

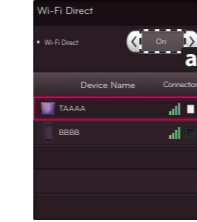
- TV to Phone: run the LG TV Remote app on the smartphone.
 - Phone to TV: view the screen of the smartphone on the TV.
- To end the connection, touch the smartphone to the Tag On sticker again.
(You can also disable the Miracast function on the smartphone.)

Wi-Fi Direct Setting

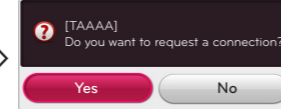
HOME → Settings → NETWORK → Wi-Fi Direct

If a local network is not available, you can connect a portable device directly to the TV using Wi-Fi Direct. With Smart Share, you can share files or screens of devices connected to **Wi-Fi Direct**.

[Device Screen]



[TV Screen]

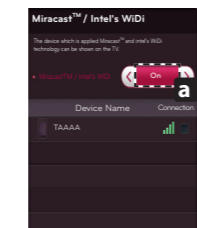


- 1 If **Wi-Fi Direct** is set to **On**, a list of available devices appears.
» To use **Wi-Fi Direct**, go to **Settings** → **NETWORK** and set **Wi-Fi Direct** (a) to **On**.
- 2 When you are prompted to request connection, select **Yes**. **Wi-Fi Direct** is now connected to your TV.

*If you are not using **Wi-Fi Direct** to minimize the interference between Wi-Fi devices, it is recommended to set **Wi-Fi Direct** (a) to **Off**. You can only use devices that support **Wi-Fi Direct**.

Miracast™ Setting

Miracast allows a portable device to securely send video and sound to the TV wirelessly.

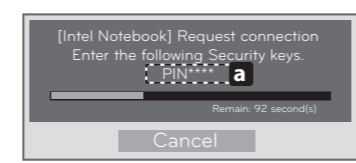
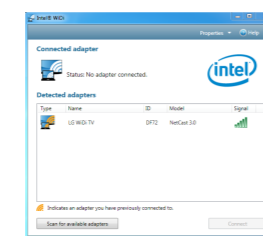


- 1 Miracast should be set to 'ON' on your mobile device. And TV. Go to the Network settings to set the Miracast.
- 2 When your TV or portable device is detected, select the device.

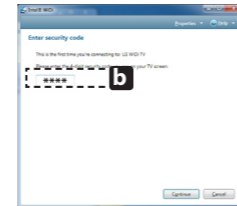
WiDi (Wireless Display) Setting

WiDi represents Wireless Display. It is a system that received AV stream that can be played back on the laptop supporting Intel WiDi. It can be used only for Live TV and external input (Composite/Component/HDMI). Other than these modes, your computer cannot detect LG Smart TV.

- 1 **Intel's WiDi** is set to **On**. Connect your laptop to AP(Router). (Without AP, it is possible to this function; it is recommended to connect to AP.) Your laptop runs the Intel WiDi (F4) program.
- 2 It detects LG Smart TVs available, which supports WiDi. In the list, select the TV you want and click Connect. Enter the number (a) shown on the screen into the input field (b) on your laptop and then click Continue. (4-digit number: under WiDi 3.1.29, 8-digit number: above WiD 3.5)



TV Screen



Notebook Screen

- 3 The TV screen appears on the laptop screen. The wireless environment may affect the screen display. If the connection is poor, the Intel WiDi connection may be lost.

- * LG TVs do not need to register.
- * TV sound setting for **Digital Sound Out** is set to **PCM**.
- * For more information on Intel WiDi, visit 'http://intel.com/go/widi'.
- * On the **Intel's WiDi**, WiDi device is not searched. Close the **Intel's WiDi**, then search WiDi.
- * You can control your PC using the Magic Remote Control.
- * Intel's WiDi laptop is not appeared in the Miracast /WiDi menu in TV network menu.

On-Screen Remote

To use the Universal Control function

With the Magic Remote Control, you can easily control your set-top box, Blu-ray player, home theater system, and Sound Bar.

- 1 Check if the device is connected to the TV.
- 2 After pressing the **123 /Q.MENU** button on the Magic Remote Control, select the device you want to control in the Change Device tab. The Screen Remote that can control the device appears.



- 3 You can control external devices using the Screen Remote on the screen. (This may not work with the **123 /Q.MENU** button for some models.)



- » **a**: Change Device tab
- » **b**: Device control buttons
- » **c**: Expand the ScreenRemote
- » **d**: Exits the Screen Remote
- » **e**: Moves the position of the ScreenRemote to left or right

- 4 Control external devices using the navigation keys, wheel (OK), or BACK button on the Magic Remote Control.

