



# T5

## 10T5HE/COR/34-835/MF13/G 25/1

Philips T5 LED tubes offer an affordable, energy saving retrofit solution. The T5 lamps have been engineered to withstand the test of time with a 50,000-hour lifetime and a limited 5-year warranty to back it up. The lighting performance effectively replaces conventional fluorescent T5 HO or T5 HE lamps. Available in either InstantFit (Type A or Type C) or MainsFit (Type B / Ballast bypass), Philips T5 TLEDs provide a variety of options for any application.

### Product data

General information	
Cap-Base	G5 [ G5]
EU RoHS compliant	Yes
Nominal Lifetime (Nom)	50000 h
Switching Cycle	50000
Tier	CorePro
Light technical	
Color Code	835 [ CCT of 3500K]
Beam Angle (Nom)	200 °
Luminous Flux (Nom)	1300 lm
Color Designation	White (WH)
Correlated Color Temperature (Nom)	3500 K
Luminous Efficacy (rated) (Nom)	130.00 lm/W
Color Consistency	<6
Color Rendering Index (Nom)	80
LLMF At End Of Nominal Lifetime (Nom)	70 %
Operating and electrical	
Input Frequency	50 to 60 Hz
Power (Nom)	10 W

Lamp Current (Max)	105 mA
Lamp Current (Min)	40 mA
Wattage Equivalent	21 W
Starting Time (Nom)	0.5 s
Warm Up Time to 60% Light (Nom)	0.5 s
UL Type	TLED_Type B; UL classified double end
Power Factor (Nom)	0.9
Voltage (Nom)	120-277 V
Temperature	
T-Ambient (Max)	45 °C
T-Ambient (Min)	-20 °C
T-Storage (Max)	65 °C
T-Storage (Min)	-40 °C
T-Case Maximum (Nom)	70 °C
Controls and dimming	
Dimmable	Limited
Mechanical and housing	
Bulb Finish	Frosted

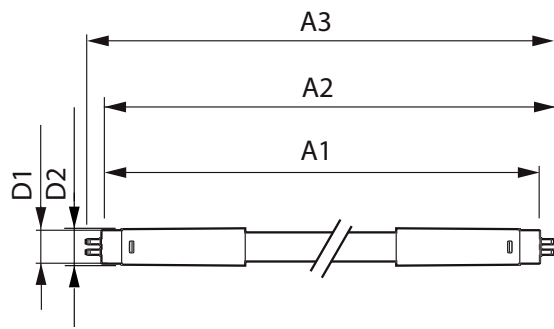
# T5

Bulb Material	Glass
Product Length	900 mm
Bulb Shape	Tube, double-ended
<b>Approval and application</b>	
Energy Saving Product	Yes
Approval Marks	RoHS compliance UL certificate

<b>Product data</b>	
Order product name	10T5HE/COR/34-835/MF13/G 25/1

EAN/UPC - Product	046677576172
Order code	929003123004
Numerator - Quantity Per Pack	1
Numerator - Packs per outer box	25
Material Nr. (12NC)	929003123004
Net Weight (Piece)	0.125 kg
Model Number	9290031230

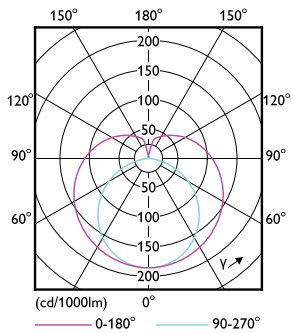
## Dimensional drawing



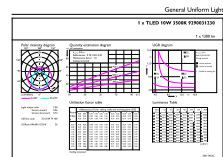
10T5HE/COR/34-835/MF13/G 25/1

Product	D1	D2	A1	A2	A3
10T5HE/COR/34-835/ MF13/G 25/1	15.3 mm	18.2 mm	849 mm	854.9 mm	863.2 mm

## Photometric data



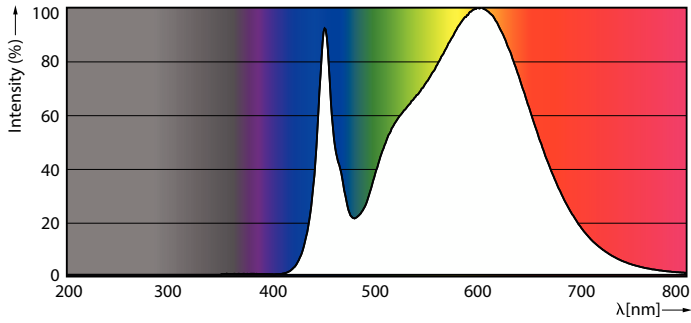
LEDtube COR NAM1 8W G5 1000lm-LDD



OSRAM Photometric U1 Philips Lighting U1 Page 1/1

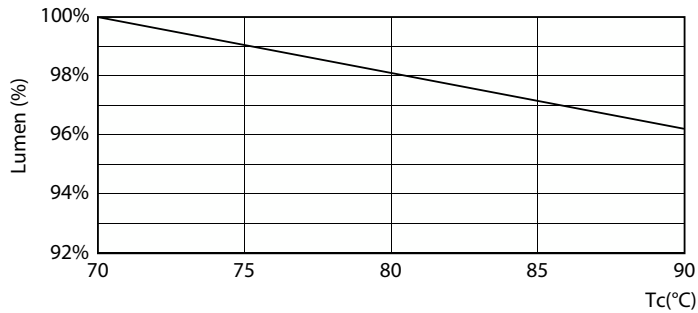
LEDtube COR NAM1 10W G5 1300lm 835-GUL

Photometric data

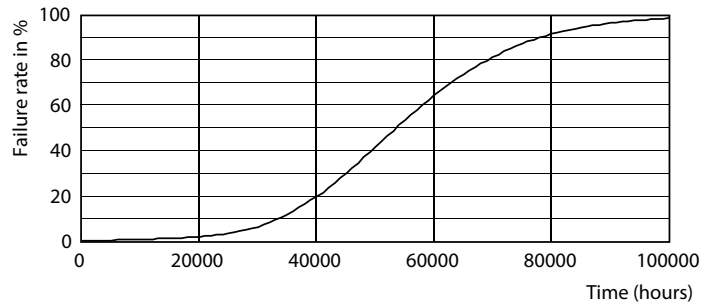


LEDtube COR NAM1 8W G5 1000lm 835-POC

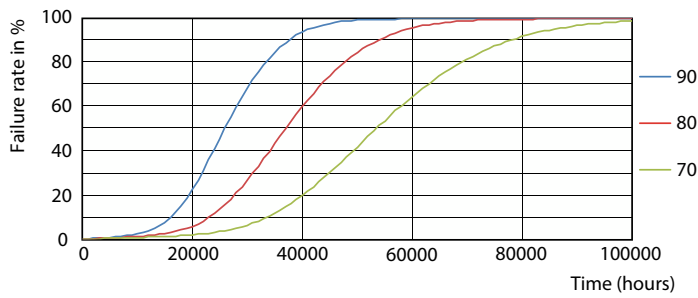
Lifetime



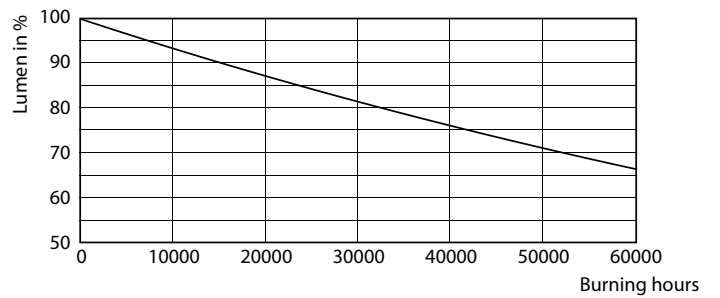
LEDtube COR NAM1 8W 50K LumenVsTc-LMP



Life Expectancy Diagram



FailureRate



Lumen Maintenance Diagram

# T5

## Lifetime



LifetimeVsTc

