



T8

14.5T8/MAS/48-840/MF21/P/DIM 25/1

Our TLEDs are available in InstantFit (Type A / Type C) or MainsFit (Ballast bypass / Type B) versions. The InstantFit lamps work on a broad variety of ballasts and LED drivers. Only InstantFit has over 15,000 lamp & ballast combinations delivering even light output, energy savings and a long lifetime. Our MainsFit products feature a double-ended design, simplifying installation while a proprietary safety circuit minimizes a shock risk. Lamp sizes range from 2-foot to 8-foot and U-bend with a variety of lumen outputs.

Product data

General information		Power (Rated) (Nom)	
Base	G13 [Medium Bi-Pin Fluorescent]		14.5 W
EU RoHS compliant	Yes	Lamp Current (Max)	125 mA
Nominal Lifetime (Nom)	70000 h	Lamp Current (Min)	58 mA
Switching Cycle	50000X	Starting Time (Nom)	0.5 s
Tier	MasterClass	Warm Up Time to 60% Light (Nom)	0.5 s
Light technical		UL Type	TLED_Type B; UL classified double end
Color Code	841 [CCT of 4100K (841)]	Power Factor (Nom)	0.9
Beam Angle (Nom)	180 °	Voltage (Nom)	120-277 V
Initial lumen (Nom)	2100 lm	Temperature	
Color Designation	Cool White (CW)	T-Ambient (Max)	113 °F
Correlated Color Temperature (Nom)	4000 K	T-Ambient (Min)	-4 °F
Luminous Efficacy (rated) (Nom)	144.00 lm/W	T-Storage (Range)	-40 °C to 65 °C
Color Consistency	6SCDM	T-Storage (Max)	149 °F
Color Rendering Index (Nom)	80	T-Storage (Min)	-40 °F
LLMF At End Of Nominal Lifetime (Nom)	70 %	T-Case Maximum (Nom)	158 °F
Operating and electrical		Controls and dimming	
Input Frequency	50 to 60 Hz	Dimmable	Only with specific dimmers

T8

Mechanical and housing

Bulb Finish	Frosted
Bulb Material	Plastic
Product Length	47-1/4 in
Bulb Shape	Tube, double-ended

Approval and application

Energy Saving Product	Yes
Approbation Marks	RoHS compliance UL certificate DLC compliance

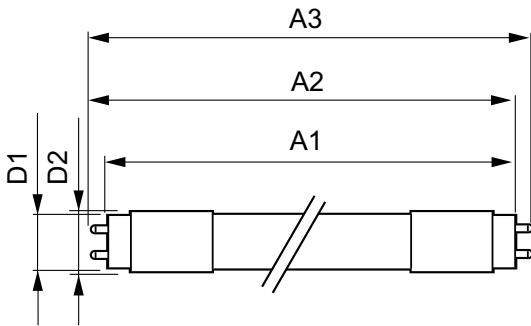
Application conditions

Ambient temperature range	-20 °C to 45 °C
---------------------------	-----------------

Product data

Order product name	14.5T8/MAS/48-840/MF21/P/DIM 25/1
EAN/UPC - Product	046677579494
Order code	579490
Numerator - Quantity Per Pack	1
Numerator - Packs per outer box	25
Material Nr. (12NC)	929003525604
Net Weight (Piece)	0.463 lb
Model Number	9290035256

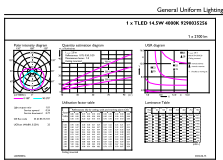
Dimensional drawing



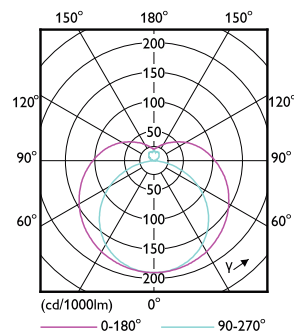
14.5T8/MAS/48-840/MF21/P/DIM 25/1

Product	D1	D2	A1	A2	A3
14.5T8/MAS/48-840/MF21/P/DIM 25/1	1-1/16 in	1-1/8 in	47-3/16 in	47-1/2 in	47-3/4 in

Photometric data

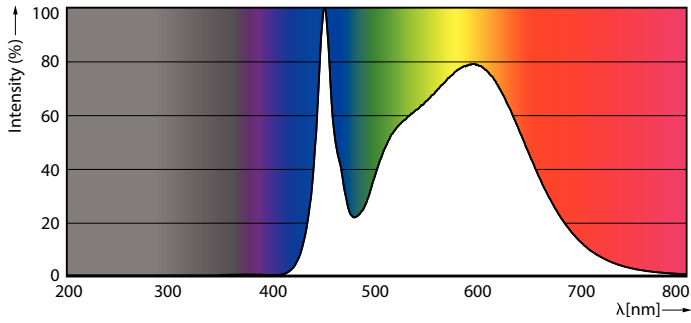


General Uniform Lighting



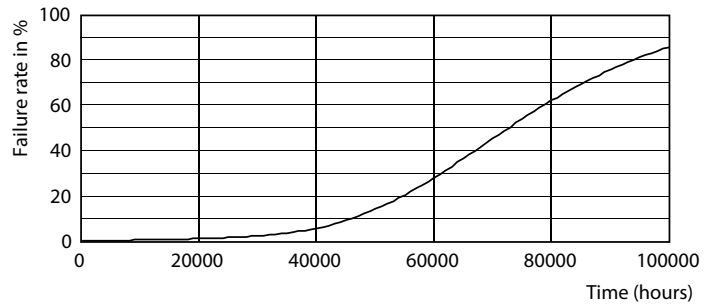
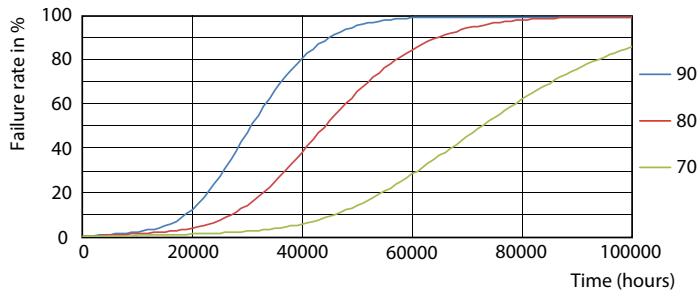
Light Distribution Diagram

Photometric data



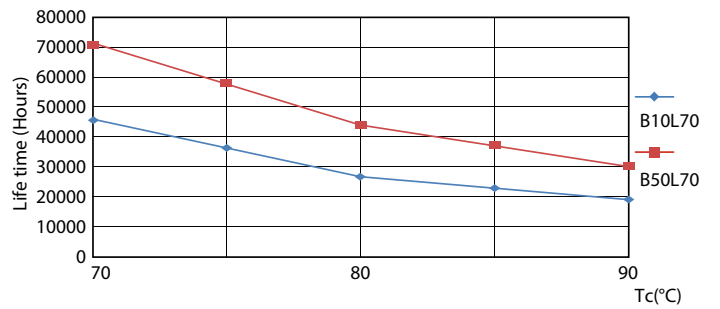
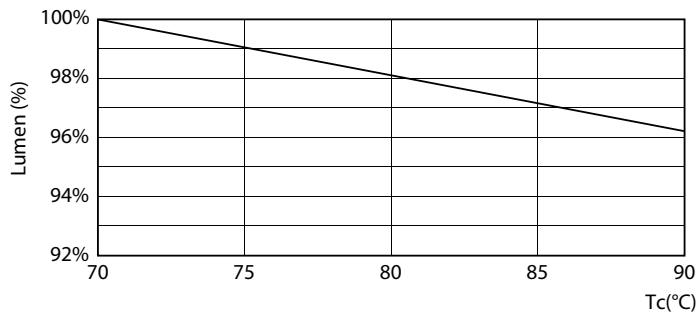
Spectral Power Distribution Colour

Lifetime



FailureRate

Life Expectancy Diagram



LumenVsTc

LifetimeVsTc

T8

Lifetime



Lumen Maintenance Diagram

