

MasterConnect LEDtube EM/mains T8

MC LEDtube IA 1200mm UO 16W840 T8

Introducing MasterConnect LEDtubes - smart retrofit LED T8 lamps that give you an easy and seamless way to upgrade to connected lighting. Simply set up with an intuitive app and MasterConnect LED tube lighting can be programmed to maximize energy savings, while providing wireless and automated light for your comfort and convenience. What's more, it is fully scalable and upgradable. If you want to enjoy additional benefits such as remote control or a management dashboard, you can simply keep the lamps you currently have installed and add a gateway to experience all the advantages of a cloud-based system. There's no better way to take lighting solutions to the next level.

Product data

General Information	
Cap-Base	G13 [Medium Bi-Pin Fluorescent]
Nominal lifetime	60,000 hour(s)
Switching Cycle	200,000
Lighting Technology	LED
Flux measurement reference	Sphere
CE mark	Yes
EU RoHS compliant	Yes

Light Technical	
Color Code	840 [CCT of 4000K]
Beam Angle (Nom)	160 degree(s)
Luminous Flux	2,500 lm
Color Designation	Cool White (CW)
Correlated Color Temperature (Nom)	4000 K
Luminous Efficacy (rated) (Nom)	156 lm/W

Color Consistency	<6
Color rendering index (CRI)	83
LLMF At End Of Nominal Lifetime (Nom)	70 %
Flickering value (PstLM)	1
Stroboscopic effect value (SVM)	0.9
Photobiological safety according to EN 62471	RGO

Operating and Electrical	
Line Frequency	50 to 60 Hz
Input Frequency	50 to 60 Hz
Power Consumption	16 W
Lamp Current (Max)	76 mA
Lamp Current (Min)	69 mA
Starting Time (Nom)	0.5 s
Warm-up time to 60% light	0.5 s
Power Factor (Fraction)	0.9

MasterConnect LEDtube EM/mains T8

Voltage (Nom)	220-240 V
LED alternative to fluorescent lamp power	36 W
Max. lamp no. on MCB B type 10A - Mains	108
Max. lamp no. on MCB B type 10A – EM ballast without Comp. Cap.	108
Max. lamp no. on MCB B type 10A – EM ballast with Comp. Cap.	22
Max. lamp no. on MCB B type 16A - Mains	173
Max. lamp no. on MCB B type 16A – EM ballast without Comp. Cap.	173
Max. lamp no. on MCB B type 16A – EM ballast with Comp. Cap.	35

Temperature

Ambient temperature range	-20 °C to 45 °C
T-Case Maximum (Nom)	50 °C

Controls and Dimming

Dimmable	Wireless Dim
----------	--------------

Mechanical and Housing

Product Length	1,200 mm
Bulb Shape	T8

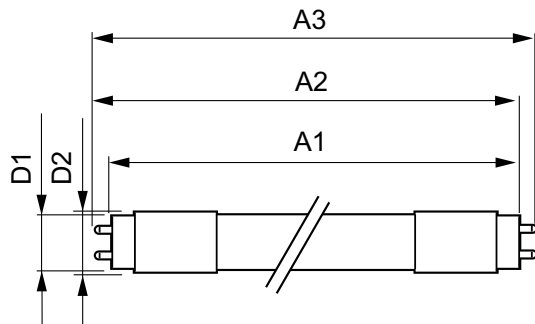
Approval and Application

Energy Efficiency Class	D
Energy Saving Product	Yes
Approval Marks	RoHS compliance TUV CE marking KEMA Keur certificate
Energy Consumption kWh/1000 h	16 kWh
EPREL Registration Number	406200

Product Data

Order product name	MC LEDtube IA 1200mm UO 16W840 T8
Full product name	MC LEDtube IA 1200mm UO 16W840 T8
Full product code	871869966970600
Order code	929002210402
Material Nr. (12NC)	929002210402
Numerator - Quantity Per Pack	1
EAN/UPC - Product/Case	8718699669706
Numerator - Packs per outer box	10
EAN/UPC - Case	8718699669713

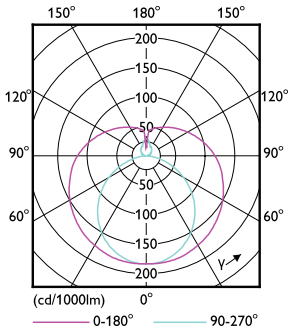
Dimensional drawing



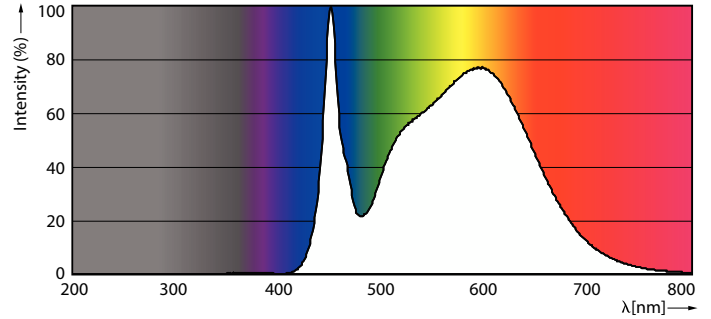
Product	D1	D2	A1	A2	A3
MC LEDtube IA 1200mm UO 16W840 T8	25.8 mm	28 mm	1,198.2 mm	1,205.3 mm	1,212.4 mm

MasterConnect LEDtube EM/mains T8

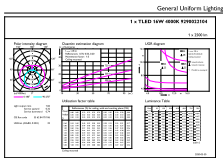
Photometric data



Light Distribution Diagram - MC LEDtube IA 1200mm UO 16W840 T8



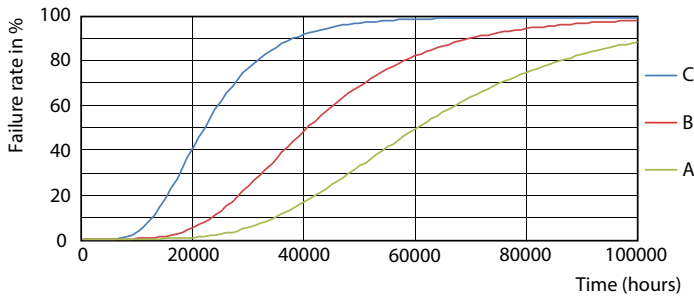
Spectral Power Distribution Colour - MC LEDtube IA 1200mm UO 16W840 T8



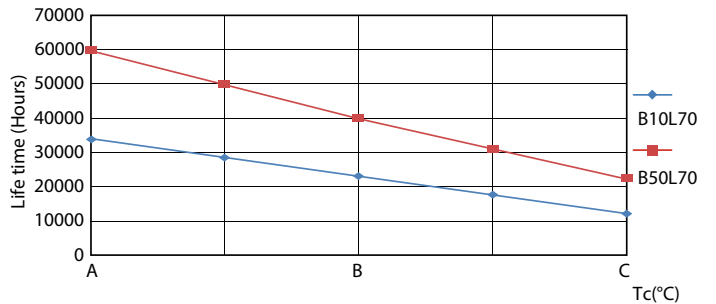
Technical Parameters (1) Page Lighting (1) Page 1/1

General uniform lighting - MC LEDtube IA 1200mm UO 16W840 T8

Lifetime



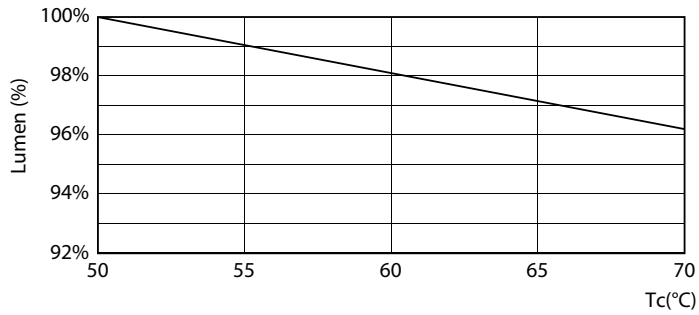
Life Expectancy Diagram - MC LEDtube IA 1200mm UO 16W840 T8



Life Expectancy Diagram - MC LEDtube IA 1200mm UO 16W840 T8

MasterConnect LEDtube EM/mains T8

Lifetime



Lumen Maintenance Diagram - MC LEDtube IA 1200mm UO 16W840 T8

Lumen Maintenance Diagram - MC LEDtube IA 1200mm UO 16W840 T8



Life Expectancy Diagram - MC LEDtube IA 1200mm UO 16W840 T8

