

## **Crown Pastoral Land Tenure Review**

**Lease name : CORONET PEAK**

**Lease number : PO 195**

### **Conservation Resources Report - Part 2**

As part of the process of Tenure Review, advice on significant inherent values within the pastoral lease is provided by Department of Conservation officials in the form of a Conservation Resources Report. This report is the result of outdoor survey and inspection. It is a key piece of information for the development of a preliminary consultation document.

Note: Plans which form part of the Conservation Resources Report are published separately.

These documents are all released under the Official information Act 1982.

**January 06**

APPENDIX 4: Plant Species List

Abundance class	Descriptor	Probable proportion of site flora
Previously present	Recorded by previous visitors, but not recorded during the current list	Unknown
Rare	Infrequently seen during visit and in very low numbers	<1%
Local	Only seen at few areas within sites visited, but could be quite common within these areas	<5%
Occasional	Individuals were scattered throughout site or were in widely scattered clumps	5-20%
Common	Frequently encountered during visit, but not a dominant part of the flora	20-60%
Abundant	A dominant part of the flora	>60%

Plant Species	Abundance at site	Notes	Threat ranking	Common name	Family
<b>Dicotyledonous trees, shrubs and vines</b>					
<i>Acer pseudoplatanus</i>			Exotic	sycamore	Aceraceae
<i>Alepis flavida</i>	Rare	Beech forest remnant in Station Creek	Gradual Decline	yellow mistletoe	Loranthaceae
<i>Aristotelia fruticosa</i>			Not threatened		Elaeocarpaceae
<i>Buddleja davidii</i>			Exotic	buddleia	Buddlejaceae
<i>Carmichaelia petriei</i>			Not threatened		Fabaceae
<i>Chionohebe densiflora</i>			Not Threatened		Plantaginaceae (ex. Scrophulariaceae)
<i>Chionohebe thomsonii</i>			Not threatened		Plantaginaceae (ex. Scrophulariaceae)
<i>Clematis marata</i>			Not threatened		Ranunculaceae
<i>Coprosma "taylorae"</i> ( <i>C. parviflora</i> var. <i>dumosa</i> , <i>C. sp.</i> (†), <i>C. sp.</i> 27)			Not threatened		Rubiaceae
<i>Coprosma atropurpurea</i>			Not threatened		Rubiaceae
<i>Coprosma cheesemanii</i>			Not threatened		Rubiaceae
<i>Coprosma ciliata</i>			Not threatened		Rubiaceae
<i>Coprosma intertexta</i>	Rare	Riparian shrubland in Deep Creek	Sparse		Rubiaceae
<i>Coprosma lucida</i>			Not threatened	shining karamu	Rubiaceae
<i>Coprosma niphobila</i>			Not threatened		Rubiaceae
<i>Coprosma petriei</i>			Not threatened		Rubiaceae

Plant Species	Abundance at site	Notes	Threat ranking	Common name	Family
<i>Coprosma propinqua</i> subsp. "propinqua"			Not threatened		Rubiaceae
<i>Coprosma rugosa</i>			Not threatened		Rubiaceae
<i>Corallospartium crassicaule</i> var. <i>racemosum</i>	Rare	Deep Creek and upper Arrow snow tussocklands	Data Deficient		Fabaceae
<i>Coriaria plumosa</i>			Not threatened	feathery tutu	Coriariaceae
<i>Coriaria sarmentosa</i>			Not threatened	tutu	Coriariaceae
<i>Coriaria sarmentosa</i> X <i>plumosa</i>			Not Threatened		Coriariaceae
<i>Cotoneaster glaucophyllus</i>					Rosaceae
<i>Cotoneaster simonsii</i>			Exotic	Khasia berry	Rosaceae
<i>Crataegus monogyna</i>			Exotic	hawthorn	Rosaceae
<i>Cytisus scoparius</i>			Exotic	broom	Fabaceae
<i>Discaria toumatou</i>			Not threatened	matagouri	Rhamnaceae
<i>Dracophyllum longifolium</i> subsp. "longifolium"			Not threatened	inaka	Epacridaceae
<i>Dracophyllum muscoides</i>			Not threatened	prostrate inaka	Epacridaceae
<i>Dracophyllum pronum</i>			Not threatened		Epacridaceae
<i>Dracophyllum uniflorum</i>			Not threatened	turpentine scrub	Epacridaceae
<i>Ulex europaeus</i>			Exotic	gorse	Fabaceae
<i>Fuchsia excorticata</i>			Not threatened	tree fuchsia	Onagraceae
<i>Gaultheria antipoda</i>			Not threatened	snowberry	Ericaceae
<i>Gaultheria crassa</i>			Not threatened	snowberry	Ericaceae
<i>Gaultheria depressa</i>			Not threatened	snowberry	Ericaceae
<i>Gaultheria depressa</i> var. <i>novae-zelandiae</i>			Not threatened	snowberry	Ericaceae
<i>Gaultheria nubicola</i>			Not threatened		Ericaceae
<i>Gaultheria parvula</i>			Not threatened		Ericaceae
<i>Griselinia littoralis</i>			Not threatened	broadleaf	Cornaceae
<i>Hebe buchananii</i>			Not threatened	Cypress hebe	Plantaginaceae (ex. Scrophulariaceae)
<i>Hebe cupressoides</i>	Rare	Shrublands above Deep Creek	Vulnerable		Plantaginaceae (ex. Scrophulariaceae)
<i>Hebe haastii</i>			Not threatened		Plantaginaceae (ex. Scrophulariaceae)
<i>Hebe hectorii</i>			Not threatened		Plantaginaceae (ex. Scrophulariaceae)

Plant Species	Abundance at site	Notes	Threat ranking	Common name	Family
<i>Hebe pauciramosa</i>			Not threatened		Plantaginaceae (ex. Scrophulariaceae)
<i>Hebe pimelioides</i> subsp. <i>pimelioides</i>			Not threatened		Plantaginaceae (ex. Scrophulariaceae)
<i>Hebe rakatensis</i>			Not threatened		Plantaginaceae (ex. Scrophulariaceae)
<i>Hebe salicifolia</i>			Not threatened	koromiko	Plantaginaceae (ex. Scrophulariaceae)
<i>Helichrysum intermedium</i>			Not threatened		Asteraceae
<i>Helichrysum lanceolatum</i> (ex. <i>H. aggregatum</i> and <i>H. glomeratum</i> )			Not threatened	niniaio	Asteraceae
<i>Hoheria lyallii</i>			Not threatened	mountain ribbonwood	Malvaceae
<i>Larix decidua</i>			Exotic	larch	Pinaceae
<i>Leptospermum scoparium</i> agg.			Not threatened	manuka	Myrtaceae
<i>Leucopogon colensoi</i> (ex. <i>L. suaveolens</i> )			Not threatened		Ericaceae
<i>Leucopogon fraseri</i> complex (mountain ecotype)			Not threatened		Ericaceae
<i>Lupinus polyphyllus</i>			Exotic	Russell lupin	Fabaceae
<i>Melicytus</i> aff. <i>alpinus</i> (erect)			Not threatened	porcupine shrub	Violaceae
<i>Melicytus</i> aff. <i>alpinus</i> (prostrate)			Unknown		Violaceae
<i>Muehlenbeckia australis</i>			Not threatened	large-leaved pohuehue	Polygonaceae
<i>Muehlenbeckia axillaris</i>			Not threatened		Polygonaceae
<i>Muehlenbeckia complexa</i> agg.			Not threatened	small-leaved pohuehue	Polygonaceae
<i>Myrsine nummularia</i>			Not threatened		Myrsinaceae
<i>Nothofagus solandri</i> var. <i>cliffortioides</i>			Not threatened	mountain beech	Nothofagaceae
<i>Olearia arborescens</i>			Not threatened		Asteraceae
<i>Olearia avecinuifolia</i>			Not threatened		Asteraceae
<i>Olearia bullata</i>			Not threatened		Asteraceae
<i>Olearia cymbifolia</i>			Not threatened		Asteraceae
<i>Olearia lineata</i>	Rare	Head of Sawpit Gully	Sparse		Asteraceae

Plant Species	Abundance at site	Notes	Threat ranking	Common name	Family
<i>Olearia nummularifolia</i>			Not threatened		Asteraceae
<i>Olearia odorata</i>			Not threatened		Asteraceae
<i>Ozothamnus vauvilliersii</i>			Not threatened	tauhinu	Asteraceae
<i>Parabebe brevistylis</i> (= <i>P. linifolia</i> subsp. <i>brevistylis</i> )			Not threatened		Plantaginaceae
<i>Pimelea oreophila</i> agg.			Not threatened	alpine daphne	Thymeleaceae
<i>Pimelea oreophila</i> agg.			Not threatened	alpine daphne	Thymeleaceae
<i>Populus nigra</i>			Exotic	Lombardy poplar	Salicaceae
<i>Pseudopanax crassifolium</i>			Not threatened	lancewood	Araliaceae
<i>Pseudotsuga menziesii</i>			Exotic	Douglas fir	Pinaceae
<i>Raukana simplex</i> var. <i>simplex</i> (ex. <i>Pseudopanax simplex</i> )			Not threatened		Araliaceae
<i>Rhus typhina</i>			Exotic	sumac	Anacardiaceae
<i>Ribes uva-crispa</i>			Exotic	gooseberry	Grossulariaceae
<i>Rosa rubiginosa</i>			Exotic	sweet briar	Rosaceae
<i>Rubus schmidelioides</i> var. <i>subpauperatus</i>			Not threatened	bush lawyer	Rosaceae
<i>Salix fragilis</i>			Exotic	crack willow	Salicaceae
<i>Sambucus nigra</i>			Exotic	elder	Caprifoliaceae
<i>Sorbus aucuparia</i>			Exotic	rowan	Rosaceae
<i>Ulex europaeus</i>			Exotic	gorse	Fabaceae
<b>Dicotyledonous herbs (including composites)</b>					
<i>Abrotanella caespitosa</i>			Not threatened		Asteraceae
<i>Abrotanella inconspicua</i>			Not threatened		Asteraceae
<i>Acaena caesiiglaucua</i> var.			Not threatened	bidibid	Rosaceae
<i>Acaena fissistipula</i>			Not Threatened	bidibid	Rosaceae
<i>Acaena inermis</i>			Not threatened	bidibid	Rosaceae
<i>Acaena profundincisa</i>			Not Threatened	bidibid	Rosaceae
<i>Acaena saccaticupula</i>			Not threatened	bidibid	Rosaceae
<i>Aciphylla</i> aff. <i>horrida</i> ( <i>A.</i> "lomon")			Not threatened		Umbelliferae
<i>Aciphylla aurea</i>			Not threatened	spaniard	Umbelliferae
<i>Aciphylla kirkii</i>			Not threatened		Umbelliferae
<i>Aciphylla lecomtei</i>	Rare	Mt St Just	Range Restricted		Umbelliferae
<i>Aciphylla scott-thomsonii</i>			Not threatened	spaniard	Umbelliferae
<i>Anaphaloides bellidioides</i>			Not threatened		Asteraceae

Plant Species	Abundance at site	Notes	Threat ranking	Common name	Family
<i>Anisotome aromatica</i> var. <i>major</i>			Not threatened		Umbelliferae
<i>Anisotome aromatica</i> var. "bog" (small, mat-forming, flower heads +/- = lamina)			Unknown		Umbelliferae
<i>Anisotome flexuosus</i>			Not Threatened		Umbelliferae
<i>Anisotome imbricata</i> var. <i>imbricata</i>			Not threatened		Umbelliferae
<i>Anisotome lanuginosa</i>			Not threatened		Umbelliferae
<i>Anisotome pilifera</i>			Not threatened		Umbelliferae
<i>Aphanes arvensis</i>			Exotic	parsley piert	Rosaceae
<i>Arctium minus</i>			Exotic	burdock	Asteraceae
<i>Brachyglottis bellidioides</i> (var. <i>bellidoidea</i> )			Not threatened		Asteraceae
<i>Brachyscome</i> aff. <i>longiscapa</i>			Not Threatened		Asteraceae
<i>Brachyscome montana</i>			Not threatened		Asteraceae
<i>Brachyscome sinclairii</i>			Not threatened		Asteraceae
<i>Cardamine debilis</i> agg.			Not threatened		Brassicaceae
<i>Celmisia</i> "rhizomatous bog"			Not threatened		Asteraceae
<i>Celmisia angustifolia</i>			Not threatened		Asteraceae
<i>Celmisia gracilentia</i> agg.			Not threatened		Asteraceae
<i>Celmisia baastii</i> var. <i>baastii</i>			Not threatened		Asteraceae
<i>Celmisia laricifolia</i>			Not threatened		Asteraceae
<i>Celmisia hyalii</i>			Not threatened	false spaniard	Asteraceae
<i>Celmisia viscosa</i>			Not threatened		Asteraceae
<i>Cirsium arvense</i>			Exotic	Californian thistle	Asteraceae
<i>Cirsium vulgare</i>			Exotic	Scotch thistle	Asteraceae
<i>Colobanthus affinis</i>			Not threatened		Caryophyllaceae
<i>Colobanthus apetalus</i>			Not Threatened		Caryophyllaceae
<i>Colobanthus buechananii</i>			Not threatened		Caryophyllaceae
<i>Colobanthus strictus</i>			Not threatened		Caryophyllaceae
<i>Digitalis purpurea</i>			Exotic	foxglove	Scrophulariaceae
<i>Dolichoglottis hyalii</i>			Not threatened	groundsel	Asteraceae
<i>Drosera arcturi</i>			Not threatened	sundew	Droseraceae
<i>Epilobium alsinoides</i> subsp. <i>atriplicifolium</i>			Not threatened		Onagraceae
<i>Epilobium alsinoides</i> subsp. <i>tenuipes</i>			Not threatened		Onagraceae
<i>Epilobium angustum</i>			Not threatened		Onagraceae
<i>Epilobium brunnescens</i> subsp. <i>brunnescens</i>			Not threatened		Onagraceae
<i>Epilobium macropus</i>			Not Threatened		Onagraceae
<i>Epilobium melanocaulon</i>			Not threatened		Onagraceae
<i>Epilobium porphyrium</i>			Not threatened		Onagraceae

Plant Species	Abundance at site	Notes	Threat ranking	Common name	Family
<i>Epilobium pubens</i>			Not threatened		Onagraceae
<i>Epilobium purpuratum</i>	Rare	Screes on Coronet Peak and Dirty Four Creek	Sparse		Onagraceae
<i>Epilobium tasmanicum</i>			Not threatened		Onagraceae
<i>Euchiton andax</i>			Not Threatened		Asteraceae
<i>Euchiton ruahinacus</i> (ex. <i>Gnaphalium ruahinacum</i> )			Not threatened		Asteraceae
<i>Fragaria Xananassa</i>			Exotic	garden strawberry	Rosaceae
<i>Galium perpusillum</i>			Not threatened		Rubiaceae
<i>Gentianella divisa</i>			Not Threatened		Gentianaceae
<i>Geranium microphyllum</i>			Not threatened		Geraniaceae
<i>Geranium sessiliflorum</i> subsp. <i>novaezealandiae</i> var. <i>novaezealandiae</i>			Not threatened		Geraniaceae
<i>Geranium sessiliflorum</i> subsp. <i>novaezealandiae</i> var. <i>novaezealandiae</i>			Not threatened		Geraniaceae
<i>Geum leiospermum</i>			Not threatened		Rosaceae
<i>Gingidia decipiens</i>			Not threatened		Apiaceae
<i>Gingidia montana</i>			Not threatened		Apiaceae
<i>Gonocarpus aggregatus</i>			Not threatened		Haloragaceae
<i>Gonocarpus micranthus</i>			Not threatened		Haloragaceae
<i>Gunnera monoica</i>			Not threatened		Gunneraceae
<i>Hectorella caespitosa</i>			Not threatened		Portulacaceae
<i>Helicbrysum filicaule</i>			Not threatened		Asteraceae
<i>Helicbrysum filicaule</i>			Not threatened		Asteraceae
<i>Hieracium aurantiacum</i>			Exotic	orange hawkweed	Asteraceae
<i>Hieracium lepidulum</i>			Exotic	tussock hawkweed	Asteraceae
<i>Hieracium pilosella</i> subsp.			Exotic	mouse-eared hawkweed	Asteraceae
<i>Hieracium praealtum</i>			Exotic	king devil	Asteraceae
<i>Hydrocotyle hydrophila</i>			Not threatened	hydrocotyle	Apiaceae
<i>Hydrocotyle "montana"</i>			Not Threatened		Apiaceae
<i>Hypericum perforatum</i>			Exotic	St John's wort	Clusiaceae
<i>Hypochoeris radicata</i>			Exotic	catsear	Asteraceae
<i>Kelleria childii</i>			Not Threatened		Thymeleaceae
<i>Kelleria croizatii</i>			Not threatened		Thymeleaceae
<i>Kelleria dieffenbachii</i>			Not threatened		Thymeleaceae
<i>Kelleria villosa</i> var. <i>villosa</i>			Not threatened		Thymeleaceae
<i>Kirkianella novaezealandiae</i>	Rare	Deep Creek short tussocklands	Sparse		Asteraceae
<i>Lagenifera barkeri</i>			Not threatened		Asteraceae
<i>Lagenifera cuneata</i>			Not threatened		Asteraceae
<i>Leptinella pectinata</i> subsp. <i>pectinata</i>			Not threatened		Asteraceae

Plant Species	Abundance at site	Notes	Threat ranking	Common name	Family
<i>Leucanthemum vulgare</i>			Exotic	oxeye daisy	Asteraceae
<i>Leucogenes grandiceps</i>			Not threatened	edelweiss	Asteraceae
<i>Linum catharticum</i>			Exotic	purging flax	Linaceae
<i>Lotus pedunculatus</i>			Exotic	lotus	Fabaceae
<i>Lychnis coronaria</i>			Exotic	rose campion	Caryophyllaceae
<i>Mentha cunninghamii</i>	Rare	Base of damp rock face near Polnoon wetlands	Regionally Significant	NZ mint	Lamiaceae
<i>Mimulus moschatus</i>			Exotic	musk	Scrophulariaceae
<i>Montia fontana</i> subsp. <i>fontana</i>			Exotic	blinks	Portulacaceae
<i>Mycelis muralis</i>			Exotic	wall lettuce	Asteraceae
<i>Myosotis "drucei"</i> ( <i>M. pygmaea</i> var. <i>drucei</i> )	Rare	Mt St Just	Regionally Significant	Druce's forget-me-not	Boraginaceae
<i>Myosotis goyenii</i>			Not threatened		Boraginaceae
<i>Myosotis hyalii</i> var. <i>hyalii</i>			Not Threatened		Boraginaceae
<i>Myosotis macrantha</i>			Not threatened		Boraginaceae
<i>Myosotis "pygmaea"</i> ( <i>M. pygmaea</i> var. <i>pygmaea</i> agg.)	Rare	A few plants near Malings Peak	Serious Decline	pygmy forget-me-not	Boraginaceae
<i>Myosotis pulvinaris</i> s.s.			Regionally Significant		Boraginaceae
<i>Myriophyllum triphyllum</i>			Not threatened		Haloragaceae
<i>Nertera baufouriana</i>			Not threatened		Rubiaceae
<i>Owrisia caespitosa</i>			Not threatened		Scrophulariaceae
<i>Owrisia glandulosa</i>			Not threatened		Scrophulariaceae
<i>Oxalis exilis</i>			Not threatened	native yellow-flowered oxalis	Oxalidaceae
<i>Pachycladon cheesemanii</i>	Rare	Rock outcrops below Coronet Road and near Polnoon wetlands	Gradual Decline		Brassicaceae
<i>Pachycladon novae-zelandiae</i>			Not Threatened		Brassicaceae
<i>Parahebe decora</i>			Not threatened		Plantaginaceae
<i>Pentachondra pumila</i>			Not threatened		Epacridaceae
<i>Phyllachne colensoi</i>			Not threatened		Stylidiaceae
<i>Phyllachne rubra</i>			Not threatened		Stylidiaceae
<i>Plantago lanigera</i>			Not threatened	hairy swamp plantain	Plantaginaceae
<i>Plantago triandra</i>			Not threatened		Plantaginaceae
<i>Plantago uniflora</i>			Not Threatened		Plantaginaceae
<i>Pratia angulata</i>			Not threatened		Campanulaceae
<i>Pratia perpusilla</i>			Not threatened		Campanulaceae
<i>Prunella vulgaris</i>			Exotic	selfheal	Lamiaceae
<i>Pseudognaphalium "inland"</i> (ex. <i>P. luteoalbum</i> in part)			Not threatened		Asteraceae



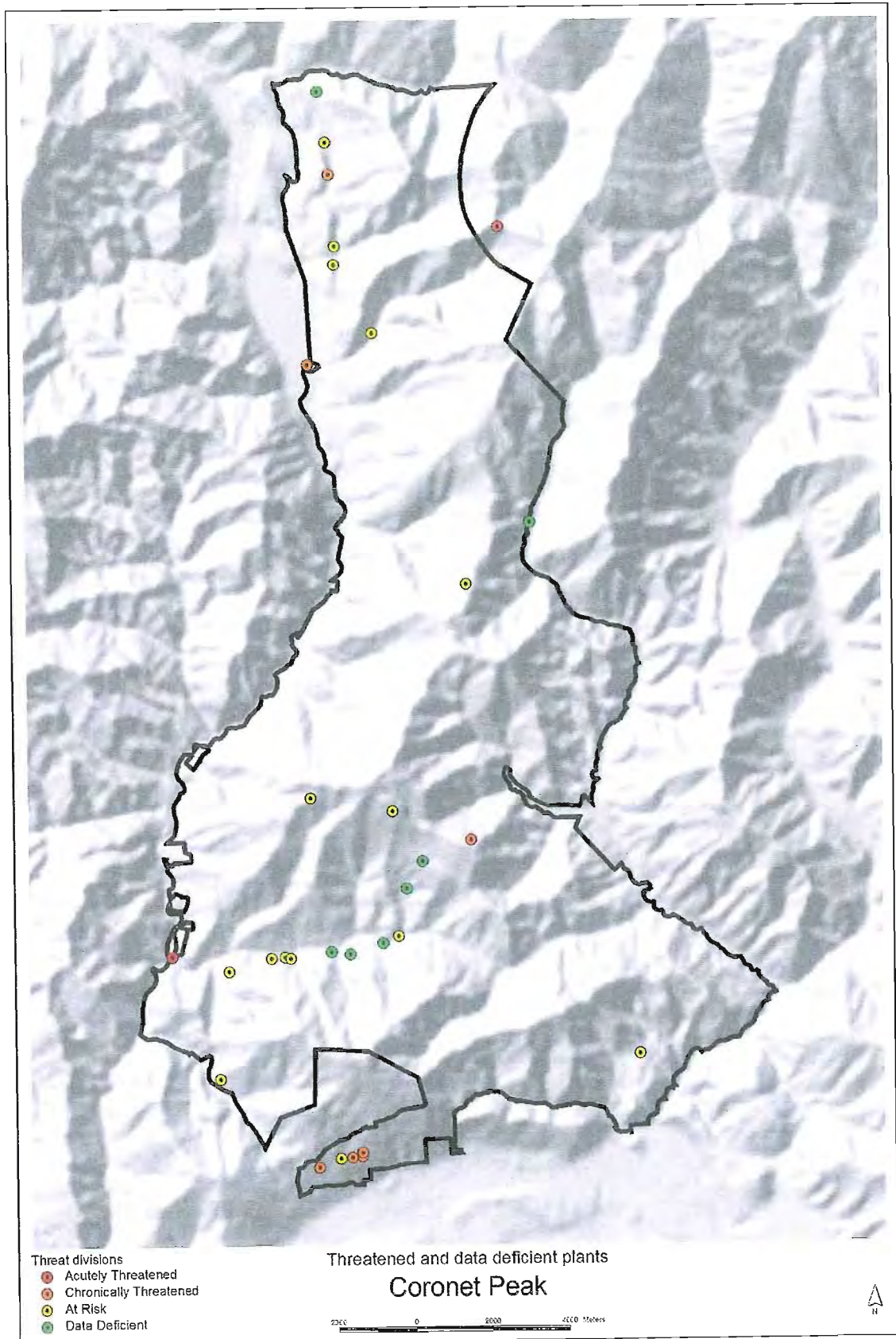
Plant Species	Abundance at site	Notes	Threat ranking	Common name	Family
<i>Psychrophila novae-zelandiae</i>			Not threatened		Ranunculaceae
<i>Psychrophila obtusa</i>			Not Threatened		Ranunculaceae
<i>Ranunculus amphitrichus</i>			Not threatened	waoriki	Ranunculaceae
<i>Ranunculus foliosus</i>			Not threatened		Ranunculaceae
<i>Ranunculus gracilipes</i>			Not threatened		Ranunculaceae
<i>Ranunculus maculatus</i>	Rare	Small wetland below Coronet Road	Sparse		Ranunculaceae
<i>Ranunculus multiscapus</i> (ex. <i>R. lappaceus</i> )			Not threatened		Ranunculaceae
<i>Ranunculus pachyrrhizus</i>			Not threatened		Ranunculaceae
<i>Ranunculus reflexus</i>			Not threatened	hairy buttercup	Ranunculaceae
<i>Ranunculus repens</i>			Exotic	creeping buttercup	Ranunculaceae
<i>Ranunculus royi</i>			Not threatened		Ranunculaceae
<i>Raoulia apice-nigra</i>			Not threatened	scabweed	Asteraceae
<i>Raoulia australis</i> s.s.			Not threatened	scabweed	Asteraceae
<i>Raoulia grandiflora</i>			Not threatened		Asteraceae
<i>Raoulia hectorii</i> var. <i>hectorii</i>			Not threatened	scabweed	Asteraceae
<i>Raoulia parkii</i>			Not Threatened	Celadon mat daisy	Asteraceae
<i>Raoulia subsericea</i>			Not threatened		Asteraceae
<i>Raoulia tenericaulis</i>			Not threatened	scabweed	Asteraceae
<i>Rumex acetosella</i>			Exotic	sheep's sorrel	Polygonaceae
<i>Rumex flexuosus</i>			Not threatened	native dock	Polygonaceae
<i>Scleranthus brockiei</i>			Not threatened		Caryophyllaceae
<i>Scleranthus uniflorus</i>			Not threatened		Caryophyllaceae
<i>Senecio quadridentatus</i>			Not threatened	cotton fireweed	Asteraceae
<i>Stackhousia minima</i>			Not threatened		Stackhousiaceae
<i>Stellaria gracilentia</i>			Not threatened		Caryophyllaceae
<i>Taraxacum magellanicum</i>			Not threatened	native dandelion	Asteraceae
<i>Trifolium dubium</i>			Exotic	suckling clover	Fabaceae
<i>Trifolium repens</i>			Exotic	white clover	Fabaceae
<i>Verbascum thapsus</i>			Exotic	woolly mullein	Scrophulariaceae
<i>Vinca major</i>			Exotic	periwinkle	Apocynaceae
<i>Viola cunninghamii</i>			Not threatened		Violaceae
<i>Vittadinia australis</i> agg.	Rare	Deep Creek short tussocklands	Data Deficient	white fuzzweed	Asteraceae
<i>Wahlenbergia albomarginata</i> subsp. <i>albomarginata</i>			Not threatened	harebell	Campanulaceae

Plant Species	Abundance at site	Notes	Threat ranking	Common name	Family
<b>Grasses</b>					
<i>Agrostis capillaris</i>			Exotic	browntop	Agrostidinae
<i>Agrostis muelleriana</i>			Not threatened		Agrostidinae
<i>Aira caryophyllea</i> subsp. <i>caryophyllea</i>			Exotic	silvery hair grass	Aveninae
<i>Anthoxanthum odoratum</i>			Exotic	sweet vernal	Phalaridinae
<i>Chionochloa macra</i>			Not threatened	slim snow tussock	Danthoniinae
<i>Chionochloa rigida</i> subsp. <i>rigida</i>			Not threatened	narrow-leaved snow-tussock	Danthoniinae
<i>Dactylis glomerata</i>			Exotic	cocksfoot	Poeae
<i>Deschampsia chapmanii</i>			Not threatened		Aveninae
<i>Elymus rectisetus</i>			Not threatened		Hordeaceae
<i>Elymus solandri</i>			Not threatened		Hordeaceae
<i>Festuca novae-zelandiae</i>			Not threatened	hard tussock	Poeae
<i>Festuca rubra</i> subsp. <i>rubra</i>			Exotic	red fescue	Poeae
<i>Holcus lanatus</i>			Exotic	Yorkshire fog	Aveninae
<i>Koeleria novozelandica</i>			Not threatened		Aveninae
<i>Poa cita</i> agg.			Not threatened	silver tussock	Poeae
<i>Poa colensoi</i> s.l.			Not threatened	blue tussock	Poeae
<i>Poa hesperia</i>			Not Threatened		Poeae
<i>Poa pratense</i>			Not threatened	Kentucky bluegrass	Poeae
<i>Rytidosperma pumilum</i>			Not threatened		Danthoniinae
<i>Vulpia bromoides</i>			Exotic	vulpia hair grass	Poeae
<b>Rushes and Sedges</b>					
<i>Carex berggrenii</i>	Rare	Damp grassland near Polnoon wetlands and upper Arrow	Sparse		Cyperaceae
<i>Carex breviculmis</i>			Not threatened		Cyperaceae
<i>Carex comans</i>			Not Threatened		Cyperaceae
<i>Carex coriacea</i>			Not threatened		Cyperaceae
<i>Carex diandra</i>			Not threatened		Cyperaceae
<i>Carex echinata</i>			Not threatened	star sedge	Cyperaceae
<i>Carex flagellifera</i>			Not threatened		Cyperaceae
<i>Carex gaudichaudiana</i>			Not threatened		Cyperaceae
<i>Carex muelleri</i>	Rare	Short tussocklands in Deep Creek and Church Hill Creek	Sparse		Cyperaceae
<i>Carex ovalis</i>			Exotic	oval sedge	Cyperaceae
<i>Carex rubicunda</i>	Rare	Single clump in wetland turf	Range Restricted		Cyperaceae
<i>Carex secta</i>			Not threatened	niggerhead	Cyperaceae
<i>Carex virgata</i>			Not threatened		Cyperaceae
<i>Carex wakatipu</i>			Not threatened		Cyperaceae

Plant Species	Abundance at site	Notes	Threat ranking	Common name	Family
<i>Cyperus alpinus</i>			Not threatened		Cyperaceae
<i>Eleocharis acuta</i>			Not threatened	sharp spike-sedge	Cyperaceae
<i>Eleocharis gracilis</i>			Not threatened	slender spike-sedge	Cyperaceae
<i>Isolepis subtilissima</i>			Not threatened		Cyperaceae
<i>Juncus articulatus</i>			Exotic	jointed rush	Juncaceae
<i>Juncus edgarae</i> (ex. <i>J. gregiflorus</i> )			Not Threatened		Juncaceae
<i>Luzula banksiana</i> var. <i>rhadina</i>			Not threatened		Juncaceae
<i>Luzula "migrata"</i> ( <i>L. banksiana</i> var. <i>migrata</i> )			Not threatened	woodrush	Juncaceae
<i>Luzula celata</i>	Rare	Stockyard Creek terrace cushionfield	Serious Decline	dwarf woodrush	Juncaceae
<i>Luzula leptophylla</i>			Not threatened	woodrush	Juncaceae
<i>Luzula pumila</i>			Not threatened	woodrush	Juncaceae
<i>Luzula rufa</i> var. <i>rufa</i>			Not threatened	woodrush	Juncaceae
<i>Marsippospermum gracile</i>			Not threatened		Juncaceae
<i>Oreobolus pectinatus</i>			Not threatened	comb sedge	Cyperaceae
<i>Schoenus pauciflorus</i> "short"			Not threatened	bog-rush	Cyperaceae
<i>Uncinia divaricata</i>			Not threatened	hookgrass, bastard grass	Cyperaceae
<i>Uncinia purpurata</i>	Rare	Tall tussockland near Advance Peak	Sparse		Cyperaceae
<b>Monocotyledons (other)</b>					
<i>Corybas macranthus</i>			Not threatened		Orchidaceae
<i>Potamogeton cheesemanii</i>			Not threatened	pondweed	Potamogetonaceae
<i>Thelymitra</i> spp.			Not threatened	sun orchid	Orchidaceae
<b>Ferns and Allies</b>					
<i>Asplenium flabellifolium</i> agg.			Not threatened	necklace fern	Aspleniaceae
<i>Asplenium flaccidum</i> subsp. <i>flaccidum</i>			Not threatened	hanging spleenwort	Aspleniaceae
<i>Asplenium richardii</i>			Not threatened		Aspleniaceae
<i>Blechnum penna-marina</i>			Not threatened		Blechnaceae
<i>Cheilanthes sieberi</i> (ex. <i>C. humilis</i> )			Not threatened	rock fern	Pteridaceae
<i>Cystopteris tasmanica</i>			Not threatened	bladder fern	Dryopteridaceae
<i>Grammitis poepiggiana</i>			Not threatened		Grammitidaceae
<i>Hyperzia australiana</i>			Not Threatened		Lycopodiaceae
<i>Hypolepis millefolium</i>			Not threatened	thousand-leaved fern	Dennstaedtiaceae
<i>Lycopodium fastigiatum</i>			Not threatened	mountain clubmoss	Lycopodiaceae
<i>Microsorium pustulatum</i>			Not threatened	hound's tongue fern	Polypodiaceae

Plant Species	Abundance at site	Notes	Threat ranking	Common name	Family
<i>Ophioglossum coriaceum</i> agg.			Not threatened	adder's tongue	Ophioglossaceae
<i>Polystichum cytotegia</i>			Not threatened	alpine shield fern	Dryopteridaceae
<i>Polystichum neozelandicum</i> subsp. <i>zerophyllum</i> (ex <i>P. richardii</i> in part)			Not threatened		Dryopteridaceae
<i>Polystichum vestitum</i>			Not threatened	prickly shield fern	Dryopteridaceae

**APPENDIX 5: Map of Distribution of Threatened and Data Deficient Plant Species**



**APPENDIX 6: Invertebrate Species List**

Order	Family	Taxon	Locality (* = nearby, off the Lease )	Elevation (m)	Comment	Date
Araneae	Aglenidae	<i>Mamoea n. sp.</i>	Vanguard Peak	1240		29-Nov-3-Dec2004
Araneae	Lycosidae	<i>Anoteropsis urquharti</i>	Malings Peak	1480		29-Nov-3-Dec2004
Araneae	Pisauridae	<i>Dolomedes sp. cf. aquaticus</i>	Deep Creek	580	Large semi-aquatic spider hunts stream insects at night.	29-Nov-3-Dec2004
Araneae	Tetragnathidae	<i>Tetragnatha sp.</i>	Malings Peak	1220		29-Nov-3-Dec2004
Araneae	Therididae	<i>Theridion cruciferum</i>	Campbells Saddle	550		29-Nov-3-Dec2004
Araneae	Thomisidae	<i>Diaea sphaeroides</i>	Campbells Saddle	550	Common shrubland crab spider	29-Nov-3-Dec2004
Araneae	Thomisidae	<i>Diaea sphaeroides</i>	Station Creek	800		29-Nov-3-Dec2004
Araneae	Zoropsidae	<i>Uliodon n. sp.</i>	Sawpit Gully	600	Previously referred to as Miturgids	29-Nov-3-Dec2004
Araneae		<i>Diaea sp.</i>	Vanguard Peak	1240		29-Nov-3-Dec2004
Araneae		<i>Neoramia childi</i>	Carmichaels Spur	1700	Western most record of a Central Otago spider, P Servid pers comm.	29-Nov-3-Dec2004
Coleoptera	Byrrhidae	<i>Pedilophorus sp.</i>	Carmichaels Spur	1300	Moss beetle	29-Nov-3-Dec2004
Coleoptera	Byrrhidae	<i>Pedilophorus sp.</i>	Carmichaels Spur	1650		29-Nov-3-Dec2004
Coleoptera	Byrrhidae	<i>Pedilophorus sp.</i>	Carmichaels Spur	1760		29-Nov-3-Dec2004
Coleoptera	Byrrhidae	<i>Pedilophorus sp.</i>	Vanguard Peak	1650		29-Nov-3-Dec2004
Coleoptera	Cantharidae	<i>Asilis sp.</i>	trib. Deep Creek	800	Adults visit shrubland flowers	29-Nov-3-Dec2004
Coleoptera	Carabidae	<i>Anchonemus' sp. cf. otagoensis</i>	Sawpit Gully	600		29-Nov-3-Dec2004
Coleoptera	Carabidae	<i>Anchonemus' sp. cf. otagoensis</i>	trib. Station Ck	760		29-Nov-3-Dec2004
Coleoptera	Carabidae	<i>Demetriida moesta</i>	Sawpit Gully	600		29-Nov-3-Dec2004
Coleoptera	Carabidae	<i>Demetriida sinuata</i>	Stockyard Creek	630		29-Nov-3-Dec2004
Coleoptera	Carabidae	<i>Holcaspis ovatella</i>	trib. Deep Creek	800		29-Nov-3-Dec2004
Coleoptera	Carabidae	<i>Holcaspis sp. cf. egregialis</i>	Vanguard Peak	1650		29-Nov-3-Dec2004
Coleoptera	Carabidae	<i>Mecodema impressum</i>	Harris Mountains	-	Endemic to mountains north and west of Lake wakatipu and west of Lake Wanaka. Peter Johns unpublished	-
Coleoptera	Carabidae	<i>Mecodema lucidum</i>	Carmichaels Spur	1650		29-Nov-3-Dec2004
Coleoptera	Carabidae	<i>Mecodema lucidum</i>	Carmichaels Spur	1760		29-Nov-3-Dec2004
Coleoptera	Carabidae	<i>Mecodema lucidum</i>	Mt St Just	1720		29-Nov-3-Dec2004
Coleoptera	Carabidae	<i>Mecodema lucidum</i>	Stony Creek	830		29-Nov-3-Dec2004
Coleoptera	Carabidae	<i>Mecodema lucidum</i>	tarns wetland Church Hill Ck	710		29-Nov-3-Dec2004
Coleoptera	Carabidae	<i>Mecodema lucidum</i>	tarns wetland Church Hill Ck	790		29-Nov-3-Dec2004

Coleoptera	Carabidae	<i>Mecodema lucidum</i>	trib. Deep Creek	800		29-Nov-3-Dec2004
Coleoptera	Carabidae	<i>Mecodema lucidum</i>	Vanguard Peak	1240		29-Nov-3-Dec2004
Coleoptera	Carabidae	<i>Mecodema lucidum</i>	Vanguard Peak	1650		29-Nov-3-Dec2004
Coleoptera	Carabidae	<i>Mecodema lucidum</i>	Vanguard Peak	1680		29-Nov-3-Dec2004
Coleoptera	Carabidae	<i>Mecodema sp.</i>	Sawpit Gully	600		29-Nov-3-Dec2004
Coleoptera	Carabidae	<i>Mecodema sp.</i>	trib. Deep Creek	800		29-Nov-3-Dec2004
Coleoptera	Carabidae	<i>Mecodema sp.</i>	trib. Station Ck	760		29-Nov-3-Dec2004
Coleoptera	Carabidae	<i>Megadromus sandageri</i>	Carmichaels Spur	1300		29-Nov-3-Dec2004
Coleoptera	Carabidae	<i>Megadromus sandageri</i>	Carmichaels Spur	1650		29-Nov-3-Dec2004
Coleoptera	Carabidae	<i>Megadromus sandageri</i>	Deep Creek	570		29-Nov-3-Dec2004
Coleoptera	Carabidae	<i>Megadromus sandageri</i>	Mt St Just	1720		29-Nov-3-Dec2004
Coleoptera	Carabidae	<i>Megadromus sandageri</i>	Sawpit Gully	600		29-Nov-3-Dec2004
Coleoptera	Carabidae	<i>Megadromus sandageri</i>	Stockyard Creek	760		29-Nov-3-Dec2004
Coleoptera	Carabidae	<i>Megadromus sandageri</i>	tarns wetland Church Hill Ck	710		29-Nov-3-Dec2004
Coleoptera	Carabidae	<i>Megadromus sandageri</i>	Vanguard Peak	1400		29-Nov-3-Dec2004
Coleoptera	Carabidae	<i>Megadromus sandageri</i>	Vanguard Peak	1650		29-Nov-3-Dec2004
Coleoptera	Carabidae	<i>Migadopinae sp.</i>	Carmichaels Spur	1760	Species in this group usually inhabit wet areas.	29-Nov-3-Dec2004
Coleoptera	Carabidae	<i>Scopodes edwardsi</i>	Carmichaels Spur	1650		29-Nov-3-Dec2004
Coleoptera	Carabidae	<i>Scopodes edwardsi</i>	Vanguard Peak	1400		29-Nov-3-Dec2004
Coleoptera	Carabidae	<i>Scopodes sp. nr cognatus</i>	Harris Mountains	-	Endemic to Central Otago and West Otago mountains, P. Johns unpublished	29-Nov-3-Dec2004
Coleoptera	Chrysomelidae	<i>Adoxia sp. 1</i>	Deep Creek	570		29-Nov-3-Dec2004
Coleoptera	Chrysomelidae	<i>Adoxia sp. 1</i>	trib. Station Ck	800		29-Nov-3-Dec2004
Coleoptera	Chrysomelidae	<i>Adoxia sp. 2</i>	Malings Peak	1571		29-Nov-3-Dec2004
Coleoptera	Chrysomelidae	<i>Adoxia sp. 2</i>	Mt St Just	>1300		29-Nov-3-Dec2004
Coleoptera	Chrysomelidae	<i>Adoxia sp. 2</i>	tarn Malings Pk.	1230		29-Nov-3-Dec2004
Coleoptera	Chrysomelidae	<i>Adoxia sp. 3</i>	Mt St Just	950		29-Nov-3-Dec2004
Coleoptera	Chrysomelidae	<i>Adoxia sp. 3</i>	trib. Deep Creek	800		29-Nov-3-Dec2004
Coleoptera	Chrysomelidae	<i>Allocharis sp.</i>	Vanguard Peak	1400		29-Nov-3-Dec2004
Coleoptera	Chrysomelidae	<i>Chrysomela hyperici</i>	Stockyard Ck ford.	510	Exotic St Johns wort beetle	29-Nov-3-Dec2004
Coleoptera	Chrysomelidae	<i>Chrysomela hyperici</i>	Stockyard Creek	750		29-Nov-3-Dec2004
Coleoptera	Coccinellidae	<i>Coccinella leonina</i>	tarns wetland Church Hill Ck	790	Ladybird	29-Nov-3-Dec2004
Coleoptera	Curculionidae	<i>Anagotus lewisi</i>	Carmichaels Spur	1300	Larvae and adults eat tussock	29-Nov-3-Dec2004
Coleoptera	Curculionidae	<i>Anagotus lewisi</i>	Carmichaels Spur	1700		29-Nov-3-Dec2004
Coleoptera	Curculionidae	<i>Anagotus lewisi</i>	Carmichaels Spur	1760		29-Nov-3-Dec2004
Coleoptera	Curculionidae	<i>Anagotus sp.</i>	Carmichaels Spur	1300		29-Nov-3-Dec2004

RELEASED UNDER THE OFFICIAL INFORMATION ACT

Coleoptera	Curculionidae	<i>Eugnomus dispar</i>	Carmichaels Spur	1650		29-Nov-3-Dec2004
Coleoptera	Curculionidae	<i>Eugnomus dispar</i>	trib. Station Ck	760	Inhabiting speargrass flowers	29-Nov-3-Dec2004
Coleoptera	Curculionidae	<i>Eugnomus durvillei</i>	tarns wetland Church Hill Ck	770	Inhabiting speargrass flowers	29-Nov-3-Dec2004
Coleoptera	Curculionidae	<i>Eugnomus sp.</i>	tarns wetland Church Hill Ck	770	Inhabiting speargrass flowers	29-Nov-3-Dec2004
Coleoptera	Curculionidae	<i>Liparogetus sp.</i>	Carmichaels Spur	1650		29-Nov-3-Dec2004
Coleoptera	Curculionidae	<i>Liparogetus sp.</i>	Carmichaels Spur	1760		29-Nov-3-Dec2004
Coleoptera	Curculionidae	<i>Lyperobius hudsoni</i>	Carmichaels Spur	1760	Large speargrass weevil. Larvae & adults eat alpine speargrasses	29-Nov-3-Dec2004
Coleoptera	Curculionidae	<i>Lyperobius hudsoni</i>	Vanguard Peak	1650		29-Nov-3-Dec2004
Coleoptera	Curculionidae	<i>Lyperobius sp. cf. spedenii</i>	Carmichaels Spur	1650		29-Nov-3-Dec2004
Coleoptera	Curculionidae	<i>Lyperobius sp. cf. spedenii</i>	Carmichaels Spur	1700	Large speargrass weevil. Larvae & adults eat alpine speargrasses - <i>Aciphylla kirkii</i> in Harris Mts.	29-Nov-3-Dec2004
Coleoptera	Curculionidae	<i>Lyperobius sp. cf. spedenii</i>	Carmichaels Spur	1760		29-Nov-3-Dec2004
Coleoptera	Curculionidae	<i>Nicaeana sp. cf. fraudator</i>	Stockyard Ck ford	510		29-Nov-3-Dec2004
Coleoptera	Curculionidae	<i>Otiobryncus sulcatus</i>	Sawpit Gully	600	Exotic black vine weevil	29-Nov-3-Dec2004
Coleoptera	Curculionidae	<i>Peristorus sp.</i>	tarns wetland Church Hill Ck	770		29-Nov-3-Dec2004
Coleoptera	Curculionidae	<i>Rhopalomerus sp.</i>	tarns wetland Church Hill Ck	770	Adults on <i>Anisotome aromatica</i>	29-Nov-3-Dec2004
Coleoptera	Dytiscidae	<i>Antiporus strigosulus</i>	tarn Malings Pk.	1230	Inhabits ponded waters	29-Nov-3-Dec2004
Coleoptera	Dytiscidae	<i>Liodessus deflectus</i>	tarn Malings Pk.	1230	Inhabits ponded waters	29-Nov-3-Dec2004
Coleoptera	Elateridae	? <i>Australeaus sp.</i>	Sawpit Gully	600		29-Nov-3-Dec2004
Coleoptera	Elateridae	? <i>Australeaus sp.</i>	tarns wetland Church Hill Ck	790		29-Nov-3-Dec2004
Coleoptera	Elateridae	? <i>Australeaus sp.</i>	trib. Deep Creek	800	Inhabits damp turf	29-Nov-3-Dec2004
Coleoptera	Elateridae	<i>Elaichrosia' sp.</i>	tarns wetland Church Hill Ck	710		29-Nov-3-Dec2004
Coleoptera	Scarabaeidae	<i>Odontria sp.</i>	Vanguard Peak	1400		29-Nov-3-Dec2004
Coleoptera	Scarabaeidae	<i>Prodontria sp.</i>	Mt St Just	1720	Alpine flightless chafer, part of a species complex with each species endemic to a range or few adjacent ranges.	29-Nov-3-Dec2004
Coleoptera	Scarabaeidae	<i>Pyronota sp. cf. edwardsi</i>	Campbells Saddle	550		29-Nov-3-Dec2004
Coleoptera	Scarabaeidae	<i>Pyronota sp. cf. edwardsi</i>	tarns wetland Church Hill Ck	790		29-Nov-3-Dec2004
Coleoptera	Scarabaeidae	<i>Pyronota sp. cf. edwardsi</i>	trib. Deep Creek	800		29-Nov-3-Dec2004
Coleoptera	Scarabaeidae	<i>Pyronota sp. cf. punctata</i>	Campbells Saddle	550		29-Nov-3-Dec2004
Coleoptera	Scarabaeidae	<i>Pyronota sp. cf. punctata</i>	tarns wetland Church Hill Ck	710		29-Nov-3-Dec2004
Coleoptera	Scarabaeidae	<i>Pyronota sp. cf. punctata</i>	trib. Station Ck	800		29-Nov-3-Dec2004



RELEASED UNDER THE OFFICIAL INFORMATION ACT

Coleoptera	Scarabaeidae	<i>Scythodes squalidus</i>	Vanguard Peak	1650	Widespread inhabiting damp areas in uplands	29-Nov-3-Dec2004
Coleoptera	Zopheridae	<i>Pycnomerus sp.</i>	trib. Station Ck	760		29-Nov-3-Dec2004
Diptera	Bibionidae	<i>Dilophus crinitus</i>	Malings Peak	1571		29-Nov-3-Dec2004
Diptera	Dolichopodidae	<i>Parentia sp.</i>	Campbells Saddle	550		29-Nov-3-Dec2004
Diptera	Empididae	<i>Hilarempis sp.</i>	Malings Peak	1400		29-Nov-3-Dec2004
Diptera	Empididae	<i>Hilarempis sp. nr. argentella</i>	Malings Peak	1571		29-Nov-3-Dec2004
Diptera	Heleomyzidae	<i>Allophylopsis hudsoni</i>	Malings Peak	1450		29-Nov-3-Dec2004
Diptera	Keroplastidae	<i>Macrocera sp.</i>	Mt St Just	1010		29-Nov-3-Dec2004
Diptera	Muscidae	<i>Limnohelina sp. nr. nigripes</i>	Campbells Saddle	550		29-Nov-3-Dec2004
Diptera	Muscidae	<i>Spilogona' sp. 1</i>	Mt St Just	1300-1600		29-Nov-3-Dec2004
Diptera	Muscidae	<i>Spilogona' sp. 2</i>	Mt St Just	1300-1600		29-Nov-3-Dec2004
Diptera	Muscidae	<i>Spilogona' sp. 3</i>	Mt St Just	1300-1600		29-Nov-3-Dec2004
Diptera	Muscidae	<i>Spilogona' sp. 4</i>	Mt St Just	1300-1600		29-Nov-3-Dec2004
Diptera	Muscidae	<i>Spilogona' sp. 5</i>	Malings Peak	1571		29-Nov-3-Dec2004
Diptera	Sphaeroceridae	<i>Phthitia sp.</i>	Malings Peak	>1100		29-Nov-3-Dec2004
Diptera	Stratiomyidae	<i>Odontomyia sp.</i>	Mt St Just	950		29-Nov-3-Dec2004
Diptera	Tachinidae	<i>Heteria appeniculata</i>	Campbells Saddle	550		29-Nov-3-Dec2004
Diptera	Tipulidae	<i>Gynoplistia anthracina?</i>	trib. Station Ck	800	Inhabits wetland with sedge	29-Nov-3-Dec2004
Diptera	Trypetidae	<i>Trupanea alboapicata</i>	Malings Peak	1571		29-Nov-3-Dec2004
Diptera	Trypetidae	<i>Trupanea alboapicata</i>	Malings Peak	>1100		29-Nov-3-Dec2004
Diptera	Trypetidae	<i>Trupanea alboapicata</i>	Mt St Just	1300-1600		29-Nov-3-Dec2004
Diptera	Trypetidae	<i>Trupanea sp.</i>	Malings Peak	1400		29-Nov-3-Dec2004
Hemiptera	Aradidae	<i>Ctenoneurus hochstetteri</i>	Stockyard Creek	750	Bark bug, colonies live under bark	29-Nov-3-Dec2004
Hemiptera	Cicadidae	<i>Kikihia sp.</i>	Stockyard Creek	800		29-Nov-3-Dec2004
Hemiptera	Lygaeidae	<i>Nysius buttoni</i>	tarns wetland Church Hill Ck	750	Inhabits sunlit turf vegetation	29-Nov-3-Dec2004
Hemiptera	Pentatomidae	<i>Hypsithocus hudsonae</i>	Carmichaels Spur	1550	Alpine flightless sheild bug, inhabits west Otago and Central Otago range tops. Threat of Extinction status (Molloy et al 2002, Hitchmough 2004) Range restricted	29-Nov-3-Dec2004
Hemiptera	Saldidae	<i>Saldula sp.</i>	tarns wetland Church Hill Ck	750	shore bug, inhabits turfs on lake and river margins	29-Nov-3-Dec2004
Lepidoptera	Arctiidae	<i>Metacrias sp.</i>	tarns wetland Church Hill Ck	770		29-Nov-3-Dec2004
Lepidoptera	Choreutidae	<i>Asterivora marmarea</i>	* Coronet Peak Ski Field	1200	Larvae eat Celmisia, Type Locality 'Lake Wakatipu'	31-Dec-1991
Lepidoptera	Choreutidae	<i>Asterivora marmarea</i>	* Coronet Peak Ski Field	880-1050		3-Dec-1994
Lepidoptera	Choreutidae	<i>Asterivora marmarea</i>	tarns wetland Church Hill	710		29-Nov-3-Dec2004

			Ck			
Lepidoptera	Choreutidae	<i>Asterivora marmarea</i>	tarns wetland Church Hill Ck	750		29-Nov-3-Dec2004
Lepidoptera	Choreutidae	<i>Asterivora sp.</i>	* Coronet Peak Ski Field	1200	Larvae mine <i>Brachiglottis bellidioides</i> (B. Patrick unpublished)	4-Feb-1990
Lepidoptera	Choreutidae	<i>Asterivora sp.</i>	Deep Creek	600		29-Nov-3-Dec2004
Lepidoptera	Coleophoridae	<i>Coleophora sp.</i>	* Coronet Peak Ski Field	1200		2,3-Feb 1990
Lepidoptera	Coleophoridae	<i>Coleophora sp.</i>	* Kerrymans Creek	580	Recorded near Coronet Pk. (3 km south on Shotover catchment).	29-Jan-05
Lepidoptera	Elachistidae	<i>Cosmiotes helonoma</i>	* Kerrymans Creek	580	Recorded near Coronet Pk. (3 km south on Shotover catchment).	29-Jan-05
Lepidoptera	Elachistidae	<i>Cosmiotes sp.</i>	* Coronet Peak Ski Field	1200		5-Feb-1990
Lepidoptera	Elachistidae	<i>Cosmiotes sp.</i>	* Coronet Peak Ski Field	1200		31-Dec-1991
Lepidoptera	Elachistidae	<i>Elachista sagittifera</i>	* Coronet Peak Ski Field	1200		2,3-Feb 1990
Lepidoptera	Elachistidae	<i>Elachista thalophora</i>	* Coronet Peak Ski Field	1200	Inhabits tall tussock fen	2,3-Feb 1990
Lepidoptera	Gelechiidae	<i>Kiwaia cheradias</i>	* Coronet Peak Ski Field	1300-1630	Inhabits damp areas of short turf, females flightless	4-Feb-1990
Lepidoptera	Gelechiidae	<i>Kiwaia cheradias</i>	Stockyard Ck ford	510		29-Nov-3-Dec2004
Lepidoptera	Gelechiidae	<i>Kiwaia cheradias</i>	tarns wetland Church Hill Ck	750		29-Nov-3-Dec2004
Lepidoptera	Gelechiidae	<i>Kiwaia lithodes</i>	* Coronet Peak Ski Field	1200	Inhabits open cushionfield	2,3-Feb 1990
Lepidoptera	Gelechiidae	<i>Kiwaia monophragma</i>	* Coronet Peak Ski Field	1200	Inhabits grassland/shrubland	2,3-Feb 1990
Lepidoptera	Gelechiidae	<i>Kiwaia parapleura</i>	Devils Elbow	420		14-16-Mar-1993
Lepidoptera	Gelechiidae	<i>Kiwaia parapleura</i>	* Kerrymans Creek	580	Recorded near Coronet Pk. (3 km south on Shotover catchment).	29-Jan-05
Lepidoptera	Gelechiidae	<i>Kiwaia plemochoa</i>	* Coronet Peak Ski Field	1000-1500		7-Dec-1980
Lepidoptera	Gelechiidae	<i>Kiwaia schematica</i>	* Coronet Peak Ski Field	1200		2,3-Feb 1990
Lepidoptera	Gelechiidae	<i>Kiwaia schematica</i>	* Coronet Peak Ski Field	1300-1630	Larvae eat <i>Acaena</i>	4-Feb-1990
Lepidoptera	Gelechiidae	<i>Kiwaia schematica</i>	* Kerrymans Creek	580	Recorded near Coronet Pk. (3 km south on Shotover catchment).	29-Jan-05
Lepidoptera	Gelechiidae	<i>Megacraspedus calamogonus</i>	* Coronet Peak Ski Field	1200	Larvae eat seeds of <i>Chionocloa</i> and other grasses	2,3-Feb 1990
Lepidoptera	Gelechiidae	<i>Theotricha oleariae</i>	Devils Elbow	420	Larvae eat small leaved <i>Olearia</i> spp.	14-16-Mar-1993
Lepidoptera	Geometridae	<i>Aponotoreas anthracias</i>	* Coronet Peak Ski Field	1200		4-Feb-1990
Lepidoptera	Geometridae	<i>Aponotoreas anthracias</i>	* Coronet Peak Ski Field	1200		17-Feb-1993
Lepidoptera	Geometridae	<i>Aponotoreas anthracias</i>	* Coronet Peak Ski Field	1250		12-Mar-1992
Lepidoptera	Geometridae	<i>Aponotoreas anthracias</i>	* Coronet Peak Ski Field	1300-1630	Larvae eat upland <i>Dracophyllum</i> , Type Locality 'Wakatipu Area'	4-Feb-1990
Lepidoptera	Geometridae	<i>Aponotoreas insignis</i>	* Coronet Peak Ski Field	1300-1630	Larvae eat <i>Chionocloa</i>	4-Feb-1990

RELEASED UNDER THE OFFICIAL INFORMATION ACT

Lepidoptera	Geometridae	<i>Aponotoreas orphnaea</i>	* Coronet Peak Ski Field	1000-1500	Type Locality is nearby at Ben Lomond	1-Jan-1978
Lepidoptera	Geometridae	<i>Arctesthes catapyrrha</i>	* Coronet Peak Ski Field	1200		17-Feb-1993
Lepidoptera	Geometridae	<i>Arctesthes catapyrrha</i>	* Coronet Peak Ski Field	1300-1630	Larvae inhabit sunlit turfs	4-Feb-1990
Lepidoptera	Geometridae	<i>Arctesthes catapyrrha</i>	Stockyard Ck ford	510		29-Nov-3-Dec2004
Lepidoptera	Geometridae	<i>Arctesthes catapyrrha</i>	tarns wetland Church Hill Ck	710		29-Nov-3-Dec2004
Lepidoptera	Geometridae	<i>Arctesthes catapyrrha</i>	tarns wetland Church Hill Ck	750		29-Nov-3-Dec2004
Lepidoptera	Geometridae	<i>Arctesthes catapyrrha</i>	tarns wetland Church Hill Ck	790		29-Nov-3-Dec2004
Lepidoptera	Geometridae	<i>Asaphodes abrogata</i>	* Coronet Peak Ski Field	1200	Larvae eat Plantago	5-Feb-1990
Lepidoptera	Geometridae	<i>Asaphodes abrogata</i>	Devils Elbow	420		14-16-Mar-1993
Lepidoptera	Geometridae	<i>Asaphodes chlamydata</i>	Stockyard Ck	800	Larvae eat Clematis	29-Nov-3-Dec2004
Lepidoptera	Geometridae	<i>Asaphodes clarata</i>	* Coronet Peak Ski Field	1200	Larvae eat Ranunculus in tall tussock	2,3-Feb 1990
Lepidoptera	Geometridae	<i>Asaphodes clarata</i>	Devils Elbow	420		14-16-Mar-1993
Lepidoptera	Geometridae	<i>Asaphodes clarata</i>	* Kerrymans Creek	580 m	Recorded near Coronet Pk. (3 km south on Shotover catchment).	29-Jan-05
Lepidoptera	Geometridae	<i>Asaphodes declarata</i>	* Coronet Peak Ski Field	1100	Type Locality is nearby at Ben Lomond	11-Mar-1992
Lepidoptera	Geometridae	<i>Asaphodes declarata</i>	* Coronet Peak Ski Field	1200		17-Feb-1993
Lepidoptera	Geometridae	<i>Asaphodes declarata</i>	* Coronet Peak Ski Field	1650		12-Mar-1992
Lepidoptera	Geometridae	<i>Asaphodes declarata</i>	* Coronet Peak Ski Field	1300-1630		4-Feb-1990
Lepidoptera	Geometridae	<i>Asaphodes helias</i>	* Coronet Peak Ski Field	1100		11-Mar-1992
Lepidoptera	Geometridae	<i>Asaphodes helias</i>	* Coronet Peak Ski Field	1200		2,3-Feb 1990
Lepidoptera	Geometridae	<i>Asaphodes omichlias</i>	* Coronet Peak Ski Field	1300-1630	An alpine species	4-Feb-1990
Lepidoptera	Geometridae	<i>Asaphodes oraria</i>	* Coronet Peak Ski Field	1100		11-Mar-1992
Lepidoptera	Geometridae	<i>Asaphodes oraria</i>	* Coronet Peak Ski Field	1200		2,3-Feb 1990
Lepidoptera	Geometridae	<i>Asaphodes oraria</i>	* Coronet Peak Ski Field	1300-1630	Larvae eat herbs in damp grassland, females flightless	4-Feb-1990
Lepidoptera	Geometridae	<i>Asaphodes philpotti</i>	Devils Elbow	420		14-16-Mar-1993
Lepidoptera	Geometridae	<i>Asaphodes philpotti</i>	* Kerrymans Creek	580	Recorded near Coronet Pk. (3 km south on Shotover catchment).	29-Jan-05
Lepidoptera	Geometridae	<i>Austrocidaria deltoidata</i>	Devils Elbow	420		14-16-Mar-1993
Lepidoptera	Geometridae	<i>Austrocidaria gobiata</i>	* Kerrymans Creek	580	Recorded near Coronet Pk. (3 km south on Shotover catchment).	29-Jan-05
Lepidoptera	Geometridae	<i>Austrocidaria similata</i>	* Coronet Peak Ski Field	860		30-Mar-1991
Lepidoptera	Geometridae	<i>Austrocidaria similata</i>	* Coronet Peak Ski Field	1200	Larvae eat Coprosma	5-Feb-1990
Lepidoptera	Geometridae	<i>Austrocidaria similata</i>	Devils Elbow	420		14-16-Mar-1993
Lepidoptera	Geometridae	<i>Austrocidaria similata</i>	* Kerrymans Creek	580	Recorded near Coronet Pk. (3 km south on Shotover catchment).	29-Jan-05

Lepidoptera	Geometridae	<i>Chloroclystis inductata</i>	Devils Elbow	420		14-16-Mar-1993
Lepidoptera	Geometridae	<i>Chloroclystis filata</i>	* Coronet Peak Ski Field	1200	Larvae eat Senecio flowers	5-Feb-1990
Lepidoptera	Geometridae	<i>Chloroclystis filata</i>	Devils Elbow	420		14-16-Mar-1993
Lepidoptera	Geometridae	<i>Chloroclystis inductata</i>	* Coronet Peak Ski Field	1200	Larvae eat flowers	5-Feb-1990
Lepidoptera	Geometridae	<i>Chloroclystis inductata</i>	* Kerrymans Creek	580	Recorded near Coronet Pk. (3 km south on Shotover catchment).	29-Jan-05
Lepidoptera	Geometridae	<i>Chloroclystis neris</i>	* Coronet Peak Ski Field	1200	Larvae eat Celmisia and Brachyglottis flowers	5-Feb-1990
Lepidoptera	Geometridae	<i>Chloroclystis sphragitis</i>	* Kerrymans Creek	580	Larvae eat <i>Muehlenbeckia australis</i> . Recorded near Coronet Pk. (3 km south on Shotover catchment).	29-Jan-05
Lepidoptera	Geometridae	<i>Dasyuris anceps</i>	* Coronet Peak Ski Field	1000-1500	Larvae eat Anisotome	24-Jan-1979
Lepidoptera	Geometridae	<i>Dasyuris micropolis</i>	trib. Deep Creek	1000	Larvae eat Anisotome	29-Nov-3-Dec2004
Lepidoptera	Geometridae	<i>Declana floccosa</i>	* Kerrymans Creek	580	Recorded near Coronet Pk. (3 km south on Shotover catchment).	29-Jan-05
Lepidoptera	Geometridae	<i>Declana junctilinea</i>	* Kerrymans Creek	580	Polyphageous on shrubs. Recorded near Coronet Pk. (3 km south on Shotover catchment).	29-Jan-05
Lepidoptera	Geometridae	<i>Declana leptomera</i>	Devils Elbow	420	Polyphageous on shrubs.	14-16-Mar-1993
Lepidoptera	Geometridae	<i>Declana n. sp. 'grey torenta' (Patrick unpublished)</i>	Central Otago	-	Patrick (2000). Larvae eat small leaved <i>Olearia</i> spp. including <i>O. odorata</i> . Threat of extinction status Nationally endangered (Molloy et al. 2002, Hitchmough 2004).	-
Lepidoptera	Geometridae	<i>Dichromodes sphaeriata</i>	* Kerrymans Creek	580	Larvae feed on lichens on rocks. Recorded near Coronet Pk. (3 km south on Shotover catchment).	29-Jan-05
Lepidoptera	Geometridae	<i>Elvia glaucata</i>	* Coronet Peak Ski Field	1200	Larvae eat <i>Rubus</i> spp.	5-Feb-1990
Lepidoptera	Geometridae	<i>Epicyme rubropunctaria</i>	* Coronet Peak Ski Field	1200	Larvae eat Gaultheria	5-Feb-1990
Lepidoptera	Geometridae	<i>Epicyme rubropunctaria</i>	Devils Elbow	420		14-16-Mar-1993
Lepidoptera	Geometridae	<i>Epiphryne undosata</i>	* Coronet Peak Ski Field	1200		5-Feb-1990
Lepidoptera	Geometridae	<i>Epiphryne xanthaspis</i>	Devils Elbow	420		14-16-Mar-1993
Lepidoptera	Geometridae	<i>Epyaxa rosaria</i>	* Coronet Peak Ski Field	1200		5-Feb-1990
Lepidoptera	Geometridae	<i>Gellonia pannularia</i>	* Kerrymans Creek	580	Inhabits shrublands. Recorded near Coronet Pk. (3 km south on Shotover catchment).	29-Jan-05
Lepidoptera	Geometridae	<i>Gellonia pannularia</i>	Devils Elbow	420		14-16-Mar-1993

Lepidoptera	Geometridae	<i>Gingidiobora subobscurata</i>	Devils Elbow	420	Native aniseed moth. Larvae eat <i>Gingidia montana</i> . Threat of extinction status Gradual decline (Molloy et al 2002, Hitchmough 2004).	14-16-Mar-1993
Lepidoptera	Geometridae	<i>Gingidiobora subobscurata</i>	* Kerrymans Creek	580	Recorded near Coronet Pk. (3 km south on Shotover catchment).	29-Jan-05
Lepidoptera	Geometridae	<i>Helastia christinae</i>	Devils Elbow	420	Larvae eat lichens	14-16-Mar-1993
Lepidoptera	Geometridae	<i>Helastia cinerearia</i>	Devils Elbow	420	Larvae eat rockface mosses	14-16-Mar-1993
Lepidoptera	Geometridae	<i>Helastia cinerearia</i>	* Kerrymans Creek	580	Recorded near Coronet Pk. (3 km south on Shotover catchment).	29-Jan-05
Lepidoptera	Geometridae	<i>Helastia corcularia</i>	* Coronet Peak Ski Field	860	Larvae eat rock mosses	30-Mar-1991
Lepidoptera	Geometridae	<i>Helastia corcularia</i>	* Coronet Peak Ski Field	1100		11-Mar-1992
Lepidoptera	Geometridae	<i>Helastia corcularia</i>	* Coronet Peak Ski Field	1200		31-Dec-1991
Lepidoptera	Geometridae	<i>Helastia corcularia</i>	* Coronet Peak Ski Field	1200		2,3-Feb 1990
Lepidoptera	Geometridae	<i>Helastia corcularia</i>	Deep Ck-Green Gate Ck	550		29-Nov-3-Dec2004
Lepidoptera	Geometridae	<i>Helastia corcularia</i>	Devils Elbow	420		14-16-Mar-1993
Lepidoptera	Geometridae	<i>Helastia corcularia</i>	* Kerrymans Creek	580	Recorded near Coronet Pk. (3 km south on Shotover catchment).	29-Jan-05
Lepidoptera	Geometridae	<i>Helastia cryptica</i>	* Kerrymans Creek	580	Larvae eat perched dead leaves. Recorded near Coronet Pk. (3 km south on Shotover catchment).	29-Jan-05
Lepidoptera	Geometridae	<i>Helastia plumbea</i>	* Coronet Peak Ski Field	1200	Larvae eat mosses, Type Locality is nearby at Queenstown	5-Feb-1990
Lepidoptera	Geometridae	<i>Hydriomena canescens</i>	* Coronet Peak Ski Field	1200	Larvae eat <i>Geranium</i> , threat of extinction status 'Gradual decline'	5-Feb-1990
Lepidoptera	Geometridae	<i>Hydriomena canescens</i>	* Coronet Peak Ski Field	1200		2,3-Feb 1990
Lepidoptera	Geometridae	<i>Hydriomena deltoidata</i>	* Coronet Peak Ski Field	1200	Larvae eat Plantago	2,3-Feb 1990
Lepidoptera	Geometridae	<i>Hydriomena deltoidata</i>	* Kerrymans Creek	580	Recorded near Coronet Pk. (3 km south on Shotover catchment).	29-Jan-05
Lepidoptera	Geometridae	<i>Hydriomena rixata</i>	* Coronet Peak Ski Field	1200	Larvae eat <i>Gunnera</i> spp.	4-Feb-1990
Lepidoptera	Geometridae	<i>Hydriomena rixata</i>	Devils Elbow	420		14-16-Mar-1993
Lepidoptera	Geometridae	<i>Hydriomena rixata</i>	* Kerrymans Creek	580	Recorded near Coronet Pk. (3 km south on Shotover catchment).	29-Jan-05
Lepidoptera	Geometridae	<i>Ischalis fortunata</i>	* Kerrymans Creek	580	Larvae eat <i>Polystichum</i> . Recorded near Coronet Pk. (3 km south on Shotover catchment).	29-Jan-05
Lepidoptera	Geometridae	<i>Microdes quadririgata</i>	* Coronet Peak Ski Field	1200		5-Feb-1990
Lepidoptera	Geometridae	<i>Microdes quadririgata</i>	Devils Elbow	420		14-16-Mar-1993

RELEASED UNDER THE OFFICIAL INFORMATION ACT

Lepidoptera	Geometridae	<i>Notoreas galaxias</i>	* Coronet Peak Ski Field	1200		17-Feb-1993
Lepidoptera	Geometridae	<i>Notoreas galaxias</i>	* Coronet Peak Ski Field	1200		17-Feb-1993
Lepidoptera	Geometridae	<i>Notoreas galaxias</i>	* Coronet Peak Ski Field	1300-1630	Larvae eat <i>Kellaria</i>	4-Feb-1990
Lepidoptera	Geometridae	<i>Notoreas hexaleuca</i>	* Coronet Peak Ski Field	1000-1500	Larvae eat <i>Kellaria</i> , Type Locality is nearby at Ben Lomond	7-Dec-1980
Lepidoptera	Geometridae	<i>Notoreas hexaleuca</i>	* Coronet Peak Ski Field	880-1050		3-Dec-1994
Lepidoptera	Geometridae	<i>Notoreas n. sp.</i>	* Coronet Peak Ski Field	880-1050		3-Dec-1994
Lepidoptera	Geometridae	<i>Notoreas paradelpa</i>	* Coronet Peak Ski Field	1000-1500	Larvae eat <i>Pimelea oreophilla</i> , Type Locality is nearby at Ben Lomond	7-Dec-1980
Lepidoptera	Geometridae	<i>Notoreas paradelpa</i>	trib. Deep Creek	1000		29-Nov-3-Dec2004
Lepidoptera	Geometridae	<i>Notoreas paradelpa</i>	trib. Station Ck	800		29-Nov-3-Dec2004
Lepidoptera	Geometridae	<i>Notoreas perornata</i>	* Coronet Peak Ski Field	1300-1630	Larvae eat <i>Pimelea</i>	4-Feb-1990
Lepidoptera	Geometridae	<i>Paranotoreas brephosata</i>	* Coronet Peak Ski Field	1200		4-Feb-1990
Lepidoptera	Geometridae	<i>Paranotoreas brephosata</i>	* Coronet Peak Ski Field	1200		17-Feb-1993
Lepidoptera	Geometridae	<i>Paranotoreas brephosata</i>	* Coronet Peak Ski Field	1300-1630	Larvae eat <i>Epilobium</i>	4-Feb-1990
Lepidoptera	Geometridae	<i>Paranotoreas brephosata</i>	* Coronet Peak Ski Field	880-1050		3-Dec-1994
Lepidoptera	Geometridae	<i>Paranotoreas brephosata</i>	Deep Ck	600		29-Nov-3-Dec2004
Lepidoptera	Geometridae	<i>Paranotoreas brephosata</i>	Stockyard Ck ford	510		29-Nov-3-Dec2004
Lepidoptera	Geometridae	<i>Paranotoreas ferrox</i>	* Coronet Peak Ski Field	1200		17-Feb-1993
Lepidoptera	Geometridae	<i>Paranotoreas ferrox</i>	* Coronet Peak Ski Field	1300-1630	Larvae eat <i>Anaphalis</i>	4-Feb-1990
Lepidoptera	Geometridae	<i>Paranotoreas zopyra</i>	* Coronet Peak Ski Field	>?700		19-Feb-1993
Lepidoptera	Geometridae	<i>Paranotoreas zopyra</i>	* Coronet Peak Ski Field	1300-1630	Larvae eat <i>Anaphalis</i>	4-Feb-1990
Lepidoptera	Geometridae	<i>Pasiphila bilineolata</i>	* Kerrymans Creek	580	Larvae eat <i>Hebe</i> spp. Recorded near Coronet Pk. (3 km south on Shotover catchment).	29-Jan-05
Lepidoptera	Geometridae	<i>Pasiphila melochlora</i>	* Coronet Peak Ski Field	1200		2,3-Feb 1990
Lepidoptera	Geometridae	<i>Pasiphila mucosata</i>	Devils Elbow	420	Larvae eat <i>Muehlenbeckia australis</i>	14-16-Mar-1993
Lepidoptera	Geometridae	<i>Pasiphila n. sp. 'olearia'</i> (Patrick unpublished)	Central Otago	-	Patrick (2000). Larvae eat small leaved <i>Olearia</i> spp. including <i>O. odorata</i> . Threat of extinction status Nationally endangered (Molloy et al. 2002, Hitchmough 2004).	-
Lepidoptera	Geometridae	<i>Pasiphila n. sp. 'olearia'</i> (Patrick unpublished)	Devils Elbow	420		14-16-Mar-1993
Lepidoptera	Geometridae	<i>Pasiphila n. sp. 'olearia'</i> (Patrick unpublished)	* Kerrymans Creek	580	Recorded near Coronet Pk. (3 km south on Shotover catchment).	29-Jan-05
Lepidoptera	Geometridae	<i>Pasiphila sandycias</i>	* Kerrymans Creek	580	Larvae eat <i>Coprosma propinqua</i> . Recorded near Coronet Pk. (3 km south on Shotover catchment).	29-Jan-05

RELEASED UNDER THE OFFICIAL INFORMATION ACT

Lepidoptera	Geometridae	<i>Poecilasthena pulchraria</i>	Stockyard Creek	800		29-Nov-3-Dec2004
Lepidoptera	Geometridae	<i>Poecilasthena pulchraria</i>	trib. Station Ck	800		29-Nov-3-Dec2004
Lepidoptera	Geometridae	<i>Pseudocoremia indistincta</i>	Devils Elbow	420	Larvae eat <i>Muehlenbeckia complexa</i>	14-16-Mar-1993
Lepidoptera	Geometridae	<i>Pseudocoremia productata</i>	* Coronet Peak Ski Field	1200		5-Feb-1990
Lepidoptera	Geometridae	<i>Pseudocoremia rudisata</i>	Devils Elbow	420	Larvae eat <i>Olearia odorata</i>	14-16-Mar-1993
Lepidoptera	Geometridae	<i>Pseudocoremia rudisata</i>	* Kerrymans Creek	580	Recorded near Coronet Pk. (3 km south on Shotover catchment).	29-Jan-05
Lepidoptera	Geometridae	<i>Pseudocoremia suavis</i>	* Kerrymans Creek	580	Recorded near Coronet Pk. (3 km south on Shotover catchment).	29-Jan-05
Lepidoptera	Geometridae	<i>Rhaphsa scotosialis</i>	Devils Elbow	420		14-16-Mar-1993
Lepidoptera	Geometridae	<i>Tatosoma tipulata</i>	* Coronet Peak Ski Field	1200	Larvae eat <i>Nothofagus</i> spp. in the region.	5-Feb-1990
Lepidoptera	Geometridae	<i>Tatosoma tipulata</i>	* Coronet Peak Ski Field	1300-1630		4-Feb-1990
Lepidoptera	Geometridae	<i>Tatosoma topia</i>	* Coronet Peak Ski Field	1300-1630		4-Feb-1990
Lepidoptera	Geometridae	<i>Xanthorhoe occulta</i>	* Coronet Peak Ski Field	1200		31-Dec-1991
Lepidoptera	Geometridae	<i>Xanthorhoe occulta</i>	* Coronet Peak Ski Field	1200		2,3-Feb 1990
Lepidoptera	Geometridae	<i>Xanthorhoe orophylla</i>	* Coronet Peak Ski Field	1200	Type Locality (alpine) 'Wakatipu'	2,3-Feb 1990
Lepidoptera	Geometridae	<i>Xanthorhoe semifissata</i>	* Coronet Peak Ski Field	860		30-Mar-1991
Lepidoptera	Geometridae	<i>Xanthorhoe semifissata</i>	* Coronet Peak Ski Field	1200		2,3-Feb 1990
Lepidoptera	Geometridae	<i>Xanthorhoe semifissata</i>	Devils Elbow	420		14-16-Mar-1993
Lepidoptera	Geometridae	<i>Xanthorhoe semifissata</i>	* Kerrymans Creek	580	Recorded near Coronet Pk. (3 km south on Shotover catchment).	29-Jan-05
Lepidoptera	Glyphipterigidae	<i>Glyphipterix batrias</i>	Stockyard Ck. ford	510	Larvae eat <i>Carex</i> tillar bases	29-Nov-3-Dec2004
Lepidoptera	Glyphipterigidae	<i>Glyphipterix barbata</i>	* Coronet Peak Ski Field	880-1050	Larvae eat <i>Chionocloa</i>	3-Dec-1994
Lepidoptera	Glyphipterigidae	<i>Glyphipterix cionophora</i>	* Coronet Peak Ski Field	1300-1630	Larvae associated with <i>Poa</i>	4-Feb-1990
Lepidoptera	Glyphipterigidae	<i>Glyphipterix cionophora</i>	* Kerrymans Creek	580	Recorded near Coronet Pk. (3 km south on Shotover catchment).	29-Jan-05
Lepidoptera	Glyphipterigidae	<i>Glyphipterix erastis</i>	* Coronet Peak Ski Field	>?700	Type Locality 'Lake Wakatipu'	19-Feb-1993
Lepidoptera	Glyphipterigidae	<i>Glyphipterix erastis</i>	* Kerrymans Creek	580	Recorded near Coronet Pk. (3 km south on Shotover catchment).	29-Jan-05
Lepidoptera	Glyphipterigidae	<i>Glyphipterix enastera</i>	* Coronet Peak Ski Field	1300-1630		4-Feb-1990
Lepidoptera	Glyphipterigidae	<i>Glyphipterix oxymachaera</i>	* Coronet Peak Ski Field	1200	Larvae associated with <i>Poa cita</i>	17-Feb-1993
Lepidoptera	Glyphipterigidae	<i>Glyphipterix sainteella</i>	* Coronet Peak Ski Field	1300-1630		4-Feb-1990
Lepidoptera	Hepialidae	<i>Wisana copularis</i>	* Coronet Peak Ski Field	1200		5-Feb-1990
Lepidoptera	Hepialidae	<i>Wisana umbraculata</i>	* Coronet Peak Ski Field	1200		5-Feb-1990
Lepidoptera	Hepialidae	<i>Wisana umbraculata</i>	* Kerrymans Creek	580	Recorded near Coronet Pk. (3 km south on Shotover catchment).	29-Jan-05
Lepidoptera	Lycaenidae	<i>Antipodilycaena n. sp.</i>	* Coronet Peak Ski Field	1200	Copper butterfly, larvae eat <i>Muehlenbeckia</i>	4-Feb-1990

RELEASED UNDER THE OFFICIAL INFORMATION ACT

Lepidoptera	Lycaenidae	<i>Antipodolycaena n. sp.</i>	* Coronet Peak Ski Field	>?700		19-Feb-1993
Lepidoptera	Lycaenidae	<i>Antipodolycaena n. sp.</i>	* Coronet Peak Ski Field	880-1050		3-Dec-1994
Lepidoptera	Lycaenidae	<i>Antipodolycaena n. sp.</i>	tarns wetland Church Hill Ck	770		29-Nov-3-Dec2004
Lepidoptera	Lycaenidae	<i>Boldenaria n. sp.</i>	* Coronet Peak Ski Field	1200	Boulder butterfly, larvae eat Muehlenbeckia	4-Feb-1990
Lepidoptera	Lycaenidae	<i>Boldenaria n. sp.</i>	* Coronet Peak Ski Field	880-1050		3-Dec-1994
Lepidoptera	Lycaenidae	<i>Boldenaria n. sp.</i>	Deep Ck	700		29-Nov-3-Dec2004
Lepidoptera	Lycaenidae	<i>Boldenaria n. sp.</i>	Stockyard Ck	750		29-Nov-3-Dec2004
Lepidoptera	Lycaenidae	<i>Boldenaria n. sp.</i>	Stockyard Ck	800		29-Nov-3-Dec2004
Lepidoptera	Lycaenidae	<i>Boldenaria n. sp.</i>	Stockyard Ck ford	510		29-Nov-3-Dec2004
Lepidoptera	Lycaenidae	<i>Boldenaria n. sp.</i>	trib. Station Ck	800		29-Nov-3-Dec2004
Lepidoptera	Lycaenidae	<i>Zizina oxleyi</i>	* Coronet Peak Ski Field	1300-1630	Blue butterfly, Larvae eat exotic clovers and native prostrate brooms	4-Feb-1990
Lepidoptera	Lycaenidae	<i>Zizina oxleyi</i>	* Coronet Peak Ski Field	880-1050		3-Dec-1994
Lepidoptera	Lycaenidae	<i>Zizina oxleyi</i>	Deep Ck	560		29-Nov-3-Dec2004
Lepidoptera	Lycaenidae	<i>Zizina oxleyi</i>	Stockyard Ck ford	510		29-Nov-3-Dec2004
Lepidoptera	Micropterigidae	<i>Sabatinea ?passalota</i>	* Coronet Peak Ski Field	1200	Type Locality 'Lake Wakatipu'	31-Dec-1991
Lepidoptera	Micropterigidae	<i>Sabatinea sp.</i>	tarns wetland Church Hill Ck	770	Inhabits wet flushes	29-Nov-3-Dec2004
Lepidoptera	Nepticulidae	<i>Stigmella n. sp. 'olearia'</i>	Devils Elbow	420	Patrick (2000). Larvae eat <i>Olearia odorata</i> , only known from Skippers valley. Adults fly in late December. Threat of extinction status Nationally critical (Molloy et al. 2002, Hitchmough 2004).	-
Lepidoptera	Nepticulidae	<i>Stigmella sp.</i>	* Coronet Peak Ski Field	1200	Larvae mine <i>Gaultheria crassa</i>	4-Feb-1990
Lepidoptera	Noctuidae	<i>Agrotis ipsilon</i>	* Coronet Peak Ski Field	1100		11-Mar-1992
Lepidoptera	Noctuidae	<i>Agrotis ipsilon</i>	* Coronet Peak Ski Field	1200		31-Dec-1991
Lepidoptera	Noctuidae	<i>Agrotis ipsilon</i>	* Coronet Peak Ski Field	1200		2,3-Feb 1990
Lepidoptera	Noctuidae	<i>Agrotis ipsilon</i>	Devils Elbow	420		14-16-Mar-1993
Lepidoptera	Noctuidae	<i>Aletia cucullina</i>	* Coronet Peak Ski Field	1200		31-Dec-1991
Lepidoptera	Noctuidae	<i>Aletia cuneata</i>	* Coronet Peak Ski Field	1200		4-Feb-1990
Lepidoptera	Noctuidae	<i>Aletia cuneata</i>	* Coronet Peak Ski Field	1200	Type Locality is nearby at Ben Lomond	2,3-Feb 1990
Lepidoptera	Noctuidae	<i>Aletia cuneata</i>	* Coronet Peak Ski Field	1650		12-Mar-1992
Lepidoptera	Noctuidae	<i>Aletia cuneata</i>	* Coronet Peak Ski Field	1650		12-Mar-1992
Lepidoptera	Noctuidae	<i>Aletia cuneata</i>	* Coronet Peak Ski Field	1300-1630		4-Feb-1990
Lepidoptera	Noctuidae	<i>Aletia cuneata</i>	Devils Elbow	420		14-16-Mar-1993
Lepidoptera	Noctuidae	<i>Aletia cuneata</i>	* Kerrymans Creek	580	Recorded near Coronet Pk. (3 km south on Shotover catchment).	29-Jan-05



Lepidoptera	Noctuidae	<i>Aletia inconstans</i>	* Kerrymans Creek	580	Recorded near Coronet Pk. (3 km south on Shotover catchment).	29-Jan-05
Lepidoptera	Noctuidae	<i>Aletia longstaffi</i>	* Coronet Peak Ski Field	1100	Larvae eat Drachophyllum and herbs. Type Locality is nearby at Ben Lomond	11-Mar-1992
Lepidoptera	Noctuidae	<i>Aletia longstaffi</i>	* Coronet Peak Ski Field	1200		2,3-Feb 1990
Lepidoptera	Noctuidae	<i>Aletia longstaffi</i>	* Coronet Peak Ski Field	1650		12-Mar-1992
Lepidoptera	Noctuidae	<i>Aletia moderata</i>	* Coronet Peak Ski Field	1200	Larvae eat Raoulia	31-Dec-1991
Lepidoptera	Noctuidae	<i>Aletia moderata</i>	* Coronet Peak Ski Field	1200		2,3-Feb 1990
Lepidoptera	Noctuidae	<i>Aletia moderata</i>	Devils Elbow	420		14-16-Mar-1993
Lepidoptera	Noctuidae	<i>Aletia nobilia</i>	* Coronet Peak Ski Field	1200		4-Feb-1990
Lepidoptera	Noctuidae	<i>Aletia obscrata</i>	* Coronet Peak Ski Field	1200	Type Locality is nearby at Ben Lomond	31-Dec-1991
Lepidoptera	Noctuidae	<i>Aletia sollenis</i>	* Coronet Peak Ski Field	1200		31-Dec-1991
Lepidoptera	Noctuidae	<i>Aletia virescens</i>	* Coronet Peak Ski Field	1100	Larvae eat Epilobium and other herbs	11-Mar-1992
Lepidoptera	Noctuidae	<i>Aletia virescens</i>	* Coronet Peak Ski Field	1200		2,3-Feb 1990
Lepidoptera	Noctuidae	<i>Aletia virescens</i>	Devils Elbow	420		14-16-Mar-1993
Lepidoptera	Noctuidae	<i>Aletia virescens</i>	* Kerrymans Creek	580	Recorded near Coronet Pk. (3 km south on Shotover catchment).	29-Jan-05
Lepidoptera	Noctuidae	<i>Andesia pessota</i>	* Coronet Peak Ski Field	1200	Larvae eat Melicytus alpinus	4-Feb-1990
Lepidoptera	Noctuidae	<i>Bityla defigurata</i>	* Coronet Peak Ski Field	1200	Larvae eat Muchlenbeckia complexa	2,3-Feb 1990
Lepidoptera	Noctuidae	<i>Bityla defigurata</i>	* Coronet Peak Ski Field	1650		12-Mar-1992
Lepidoptera	Noctuidae	<i>Bityla defigurata</i>	* Kerrymans Creek	580	Recorded near Coronet Pk. (3 km south on Shotover catchment).	29-Jan-05
Lepidoptera	Noctuidae	<i>Diarsia intermixta</i>	* Kerrymans Creek	580 m	Recorded near Coronet Pk. (3 km south on Shotover catchment).	29-Jan-05
Lepidoptera	Noctuidae	<i>Graphania agorastis</i>	* Kerrymans Creek	580	Inhabits damp areas. Recorded near Coronet Pk. (3 km south on Shotover catchment).	29-Jan-05
Lepidoptera	Noctuidae	<i>Graphania averilla</i>	* Coronet Peak Ski Field	1200		31-Dec-1991
Lepidoptera	Noctuidae	<i>Graphania disjungens</i>	* Coronet Peak Ski Field	1200		31-Dec-1991
Lepidoptera	Noctuidae	<i>Graphania disjungens</i>	* Coronet Peak Ski Field	1200		2,3-Feb 1990
Lepidoptera	Noctuidae	<i>Graphania disjungens</i>	* Kerrymans Creek	580	Recorded near Coronet Pk. (3 km south on Shotover catchment).	29-Jan-05
Lepidoptera	Noctuidae	<i>Graphania bomoscia</i>	* Coronet Peak Ski Field	1200	Larvae eat Ozothamnus	2,3-Feb 1990
Lepidoptera	Noctuidae	<i>Graphania infensa</i>	* Coronet Peak Ski Field	1200	Larvae eat grasses and sedges	31-Dec-1991
Lepidoptera	Noctuidae	<i>Graphania lignana</i>	* Coronet Peak Ski Field	1100		11-Mar-1992
Lepidoptera	Noctuidae	<i>Graphania lignana</i>	* Coronet Peak Ski Field	1200		2,3-Feb 1990
Lepidoptera	Noctuidae	<i>Graphania lignana</i>	Devils Elbow	420		14-16-Mar-1993

RELEASED UNDER THE OFFICIAL INFORMATION ACT

Lepidoptera	Noctuidae	<i>Graphania lindsayi</i>	* Coronet Peak Ski Field	1200		2,3-Feb 1990
Lepidoptera	Noctuidae	<i>Graphania lithias</i>	* Coronet Peak Ski Field	1200	Larvae eat <i>Melicytus alpinus</i>	2,3-Feb 1990
Lepidoptera	Noctuidae	<i>Graphania lithias</i>	Devils Elbow	420		14-16-Mar-1993
Lepidoptera	Noctuidae	<i>Graphania lithias</i>	* Kerrymans Creek	580	Recorded near Coronet Pk. (3 km south on Shotover catchment).	29-Jan-05
Lepidoptera	Noctuidae	<i>Graphania maya</i>	* Coronet Peak Ski Field	1200	Larvae eat native grasses	4-Feb-1990
Lepidoptera	Noctuidae	<i>Graphania mollis</i>	* Coronet Peak Ski Field	1200		31-Dec-1991
Lepidoptera	Noctuidae	<i>Graphania mollis</i>	* Coronet Peak Ski Field	1200		2,3-Feb 1990
Lepidoptera	Noctuidae	<i>Graphania mollis</i>	* Kerrymans Creek	580	Recorded near Coronet Pk. (3 km south on Shotover catchment).	29-Jan-05
Lepidoptera	Noctuidae	<i>Graphania morosa</i>	* Coronet Peak Ski Field	1100		11-Mar-1992
Lepidoptera	Noctuidae	<i>Graphania morosa</i>	Devils Elbow	420		14-16-Mar-1993
Lepidoptera	Noctuidae	<i>Graphania morosa</i>	* Kerrymans Creek	580	Recorded near Coronet Pk. (3 km south on Shotover catchment).	29-Jan-05
Lepidoptera	Noctuidae	<i>Graphania mutans</i>	* Coronet Peak Ski Field	1100		11-Mar-1992
Lepidoptera	Noctuidae	<i>Graphania mutans</i>	* Coronet Peak Ski Field	1200		30-Mar-1991
Lepidoptera	Noctuidae	<i>Graphania mutans</i>	* Coronet Peak Ski Field	1200		31-Dec-1991
Lepidoptera	Noctuidae	<i>Graphania mutans</i>	* Coronet Peak Ski Field	1200		2,3-Feb 1990
Lepidoptera	Noctuidae	<i>Graphania mutans</i>	* Coronet Peak Ski Field	1650		12-Mar-1992
Lepidoptera	Noctuidae	<i>Graphania mutans</i>	Devils Elbow	420		14-16-Mar-1993
Lepidoptera	Noctuidae	<i>Graphania mutans</i>	* Kerrymans Creek	580	Recorded near Coronet Pk. (3 km south on Shotover catchment).	29-Jan-05
Lepidoptera	Noctuidae	<i>Graphania nullifera</i>	* Coronet Peak Ski Field	1200	Larvae bore speargrasses	2,3-Feb 1990
Lepidoptera	Noctuidae	<i>Graphania nullifera</i>	* Coronet Peak Ski Field	1650		12-Mar-1992
Lepidoptera	Noctuidae	<i>Graphania nullifera</i>	* Kerrymans Creek	580	Recorded near Coronet Pk. (3 km south on Shotover catchment).	29-Jan-05
Lepidoptera	Noctuidae	<i>Graphania omoplaca</i>	* Coronet Peak Ski Field	1200		2,3-Feb 1990
Lepidoptera	Noctuidae	<i>Graphania omoplaca</i>	* Kerrymans Creek	580	Recorded near Coronet Pk. (3 km south on Shotover catchment).	29-Jan-05
Lepidoptera	Noctuidae	<i>Graphania paracausta</i>	* Coronet Peak Ski Field	1200		31-Dec-1991
Lepidoptera	Noctuidae	<i>Graphania phricas</i>	* Coronet Peak Ski Field	1200	Larvae eat <i>Discaria toumatou</i>	31-Dec-1991
Lepidoptera	Noctuidae	<i>Graphania phricas</i>	* Coronet Peak Ski Field	1200		2,3-Feb 1990
Lepidoptera	Noctuidae	<i>Graphania phricas</i>	* Coronet Peak Ski Field	1650		12-Mar-1992
Lepidoptera	Noctuidae	<i>Graphania phricas</i>	Devils Elbow	420		14-16-Mar-1993
Lepidoptera	Noctuidae	<i>Graphania phricas</i>	* Kerrymans Creek	580	Recorded near Coronet Pk. (3 km south on Shotover catchment).	29-Jan-05
Lepidoptera	Noctuidae	<i>Graphania plena</i>	Devils Elbow	420		14-16-Mar-1993

RELEASED UNDER THE OFFICIAL INFORMATION ACT

Lepidoptera	Noctuidae	<i>Graphania plena</i>	* Kerrymans Creek	580	Recorded near Coronet Pk. (3 km south on Shotover catchment).	29-Jan-05
Lepidoptera	Noctuidae	<i>Graphania rubescens</i>	* Coronet Peak Ski Field	1200		2,3-Feb 1990
Lepidoptera	Noctuidae	<i>Graphania rubescens</i>	* Kerrymans Creek	580	Recorded near Coronet Pk. (3 km south on Shotover catchment).	29-Jan-05
Lepidoptera	Noctuidae	<i>Graphania sequens</i>	* Coronet Peak Ski Field	1200		5-Feb-1990
Lepidoptera	Noctuidae	<i>Graphania sequens</i>	* Coronet Peak Ski Field	1200		31-Dec-1991
Lepidoptera	Noctuidae	<i>Graphania sequens</i>	* Coronet Peak Ski Field	1200		2,3-Feb 1990
Lepidoptera	Noctuidae	<i>Graphania tetrachroa</i>	Central Otago	-	Patrick (2000). Larvae eat small leaved <i>Olearia</i> spp. including <i>O. odorata</i> . Threat of extinction status Nationally endangered (Molloy et al. 2002, Hitchmough 2004).	-
Lepidoptera	Noctuidae	<i>Graphania tetrachroa</i>	* Kerrymans Creek	580	Recorded near Coronet Pk. (3 km south on Shotover catchment).	29-Jan-05
Lepidoptera	Noctuidae	<i>Graphania ustistriga</i>	* Coronet Peak Ski Field	1200		4-Feb-1990
Lepidoptera	Noctuidae	<i>Graphania ustistriga</i>	Devils Elbow	420		14-16-Mar-1993
Lepidoptera	Noctuidae	<i>Graphania ustistriga</i>	* Kerrymans Creek	580	Recorded near Coronet Pk. (3 km south on Shotover catchment).	29-Jan-05
Lepidoptera	Noctuidae	<i>Homobadena fortis</i>	* Coronet Peak Ski Field	1200	Larvae eat <i>Meliccytus alpinus</i>	4-Feb-1990
Lepidoptera	Noctuidae	<i>Homobadena fortis</i>	* Coronet Peak Ski Field	1200		31-Dec-1991
Lepidoptera	Noctuidae	<i>Ichneutica ceranias</i>	* Coronet Peak Ski Field	1200	Larvae eat <i>Chionocloa</i>	2,3-Feb 1990
Lepidoptera	Noctuidae	<i>Ichneutica ceranias</i>	* Coronet Peak Ski Field	1650		12-Mar-1992
Lepidoptera	Noctuidae	<i>Meterana exquisita</i>	Central Otago	-	Patrick (2000). Larvae eat small leaved <i>Olearia</i> spp. including <i>O. odorata</i> . Threat of extinction status Gradual decline (Molloy et al. 2002, Hitchmough 2004).	-
Lepidoptera	Noctuidae	<i>Meterana exquisita</i>	Stockyard Creek	750		29-Nov-3-Dec2004
Lepidoptera	Noctuidae	<i>Meterana grandiosa</i>	Central Otago	-	Patrick (2000). Larvae eat small leaved <i>Olearia</i> spp. including <i>O. odorata</i> . Threat of extinction status Gradual decline (Molloy et al. 2002, Hitchmough 2004).	-
Lepidoptera	Noctuidae	<i>Meterana meyricki</i>	* Coronet Peak Ski Field	1100		11-Mar-1992
Lepidoptera	Noctuidae	<i>Meterana meyricki</i>	* Coronet Peak Ski Field	1200	Larvae eat <i>Pimelea</i> spp. Type Locality is Macetown (Hampson 1911)	5-Feb-1990
Lepidoptera	Noctuidae	<i>Meterana meyricki</i>	* Coronet Peak Ski Field	1200		2,3-Feb 1990
Lepidoptera	Noctuidae	<i>Meterana meyricki</i>	* Coronet Peak Ski Field	1650		12-Mar-1992

RELEASED UNDER THE OFFICIAL INFORMATION ACT

Lepidoptera	Noctuidae	<i>Meterana stipata</i>	* Coronet Peak Ski Field	1200	Larvae eat <i>Muehlenbeckia australis</i>	4-Feb-1990
Lepidoptera	Noctuidae	<i>Meterana tartarea</i>	Devils Elbow	420	Larvae eat <i>Coprosma</i> spp.	14-16-Mar-1993
Lepidoptera	Noctuidae	<i>Persectania aversa</i>	* Coronet Peak Ski Field	1200		2,3-Feb 1990
Lepidoptera	Noctuidae	<i>Persectania aversa</i>	* Coronet Peak Ski Field	1650		12-Mar-1992
Lepidoptera	Noctuidae	<i>Persectania aversa</i>	Devils Elbow	420		14-16-Mar-1993
Lepidoptera	Noctuidae	<i>Persectania aversa</i>	* Kerrymans Creek	580	Recorded near Coronet Pk. (3 km south on Shotover catchment).	29-Jan-05
Lepidoptera	Noctuidae	<i>Physica caerulea</i>	* Kerrymans Creek	580	Recorded near Coronet Pk. (3 km south on Shotover catchment).	29-Jan-05
Lepidoptera	Noctuidae	<i>Ridonia comma</i>	* Coronet Peak Ski Field	1200		31-Dec-1991
Lepidoptera	Noctuidae	<i>Schrankia costaestrigalis</i>	* Kerrymans Creek	580	Larvae attached to <i>Juncus</i> . Recorded near Coronet Pk. (3 km south on Shotover catchment).	29-Jan-05
Lepidoptera	Noctuidae	<i>Tmetolophota arotis</i>	* Coronet Peak Ski Field	1200	Larvae eat <i>Cortaderia</i> and other grasses	31-Dec-1991
Lepidoptera	Noctuidae	<i>Tmetolophota atristriga</i>	* Coronet Peak Ski Field	1200		4-Feb-1990
Lepidoptera	Noctuidae	<i>Tmetolophota atristriga</i>	* Coronet Peak Ski Field	1200		31-Dec-1991
Lepidoptera	Noctuidae	<i>Tmetolophota atristriga</i>	* Kerrymans Creek	580	Recorded near Coronet Pk. (3 km south on Shotover catchment).	29-Jan-05
Lepidoptera	Noctuidae	<i>Tmetolophota lissocyla</i>	* Coronet Peak Ski Field	1100		11-Mar-1992
Lepidoptera	Noctuidae	<i>Tmetolophota lissocyla</i>	* Coronet Peak Ski Field	1200		2,3-Feb 1990
Lepidoptera	Noctuidae	<i>Tmetolophota lissocyla</i>	* Coronet Peak Ski Field	1650		12-Mar-1992
Lepidoptera	Noctuidae	<i>Tmetolophota propria</i>	* Coronet Peak Ski Field	1100		11-Mar-1992
Lepidoptera	Noctuidae	<i>Tmetolophota propria</i>	* Coronet Peak Ski Field	1200		31-Dec-1991
Lepidoptera	Noctuidae	<i>Tmetolophota propria</i>	* Coronet Peak Ski Field	1200		2,3-Feb 1990
Lepidoptera	Noctuidae	<i>Tmetolophota propria</i>	* Coronet Peak Ski Field	1650		12-Mar-1992
Lepidoptera	Noctuidae	<i>Tmetolophota propria</i>	Devils Elbow	420		14-16-Mar-1993
Lepidoptera	Noctuidae	<i>Tmetolophota propria</i>	* Kerrymans Creek	580	Recorded near Coronet Pk. (3 km south on Shotover catchment).	29-Jan-05
Lepidoptera	Noctuidae	<i>Tmetolophota semivittata</i>	* Coronet Peak Ski Field	1100	Larvae eat <i>Carex</i> spp.	11-Mar-1992
Lepidoptera	Noctuidae	<i>Tmetolophota semivittata</i>	* Coronet Peak Ski Field	1200		2,3-Feb 1990
Lepidoptera	Noctuidae	<i>Tmetolophota semivittata</i>	* Kerrymans Creek	580	Recorded near Coronet Pk. (3 km south on Shotover catchment).	29-Jan-05
Lepidoptera	Noctuidae	<i>Tmetolophota sulcana</i>	Devils Elbow	420	Larvae eat <i>Microlaena</i>	14-16-Mar-1993
Lepidoptera	Nymphalidae	<i>Bassaris gonerilla</i>	* Coronet Peak Ski Field	1300-1630	Red Admiral butterfly. Larvae eat nettle spp.	4-Feb-1990
Lepidoptera	Oecophoridae	<i>Endrosis sarcitrella</i>	* Coronet Peak Ski Field	1200	An exotic moth	5-Feb-1990
Lepidoptera	Oecophoridae	<i>Eutorna caryochroa</i>	* Coronet Peak Ski Field	1200		2,3-Feb 1990
Lepidoptera	Oecophoridae	<i>Eutorna caryochroa</i>	* Coronet Peak Ski Field	1300-1630		4-Feb-1990

Lepidoptera	Oecophoridae	<i>Eutorna symmorpha</i>	* Kerrymans Creek	580	Inhabits damp areas. Recorded near Coronet Pk. (3 km south on Shotover catchment).	29-Jan-05
Lepidoptera	Oecophoridae	<i>G. eleaer (Oecophorid?)</i>	trib. Deep Creek	1200		29-Nov-3-Dec2004
Lepidoptera	Oecophoridae	<i>G. eleaer (Oecophorid?)</i>	trib. Station Ck	760		29-Nov-3-Dec2004
Lepidoptera	Oecophoridae	<i>G. eleaer (Oecophorid?)</i>	trib. Station Ck	800		29-Nov-3-Dec2004
Lepidoptera	Oecophoridae	<i>Gymnobathra parca</i>	* Coronet Peak Ski Field	1200	Case bearing larvae on litter	2,3-Feb 1990
Lepidoptera	Oecophoridae	<i>Gymnobathra parca</i>	Deep Creek	700		29-Nov-3-Dec2004
Lepidoptera	Oecophoridae	<i>Gymnobathra parca</i>	Stockyard Creek	750		29-Nov-3-Dec2004
Lepidoptera	Oecophoridae	<i>Gymnobathra parca</i>	Stockyard Creek	800		29-Nov-3-Dec2004
Lepidoptera	Oecophoridae	<i>Gymnobathra sarcocantha</i>	* Coronet Peak Ski Field	1200	Case bearer	31-Dec-1991
Lepidoptera	Oecophoridae	<i>Gymnobathra sarcocantha</i>	* Coronet Peak Ski Field	1200		2,3-Feb 1990
Lepidoptera	Oecophoridae	<i>Gymnobathra sarcocantha</i>	* Kerrymans Creek	580	Recorded near Coronet Pk. (3 km south on Shotover catchment).	29-Jan-05
Lepidoptera	Oecophoridae	<i>Hieroderis n. sp.</i>	* Kerrymans Creek	580	Inhabits shrubland litter. Recorded near Coronet Pk. (3 km south on Shotover catchment).	29-Jan-05
Lepidoptera	Oecophoridae	<i>Hofmannophila Pseudopretella</i>	* Coronet Peak Ski Field	1200	Exotic moth	5-Feb-1990
Lepidoptera	Oecophoridae	<i>Isochasta paradesma</i>	* Kerrymans Creek	580	Recorded near Coronet Pk. (3 km south on Shotover catchment).	29-Jan-05
Lepidoptera	Oecophoridae	<i>Izatha peroneanella</i>	* Coronet Peak Ski Field	1200	Larvae eat dead wood	5-Feb-1990
Lepidoptera	Oecophoridae	<i>Izatha picarella</i>	* Kerrymans Creek	580	Larvae eat dead wood. Recorded near Coronet Pk. (3 km south on Shotover catchment).	29-Jan-05
Lepidoptera	Oecophoridae	<i>Leptocroca asphaltis</i>	* Kerrymans Creek	580	Larvae inhabit dry banks and eat roots and litter. Females are flightless. Recorded near Coronet Pk. (3 km south on Shotover catchment).	29-Jan-05
Lepidoptera	Oecophoridae	<i>Leptocroca sp.</i>	tarns wetland Church Hill Ck	750		29-Nov-3-Dec2004
Lepidoptera	Oecophoridae	<i>Maoritenes n. sp. 'olearia' (B.H.Patrick)</i>	Central Otago	-	Patrick (2000). Larvae eat small leaved <i>Olearia</i> spp. including <i>O. odorata</i> . Threat of extinction status Nationally endangered (Molloy et al. 2002, Hitchmough 2004).	-
Lepidoptera	Oecophoridae	<i>Prepalla austrina</i>	Carmichaels Spur	1300	Larvae eat Leucopogon, Type Locality nearby at Ben Lomond	29-Nov-3-Dec2004
Lepidoptera	Oecophoridae	<i>Prepalla austrina</i>		-	Larvae eat Leucopogon fraseri	

Lepidoptera	Oecophoridae	<i>Stathmopoda albimaculata</i>	Central Otago	-	Patrick (2000). Larvae eat small leaved <i>Olearia</i> spp. including <i>O. odorata</i> . Threat of extinction status Nationally endangered (Molloy et al. 2002, Hitchmough 2004).	-
Lepidoptera	Oecophoridae	<i>Stathmopoda n. sp.</i>	Central Otago	-	Patrick (2000). Larvae eat small leaved <i>Olearia</i> spp. including <i>O. odorata</i> . Threat of extinction status Nationally critical (Molloy et al. 2002, Hitchmough 2004).	-
Lepidoptera	Oecophoridae	<i>Stathmopoda n. sp. 'olearia'</i>	* Kerrymans Creek	580	Recorded near Coronet Pk. (3 km south on Shotover catchment).	29-Jan-05
Lepidoptera	Oecophoridae	<i>Tingena ?maranta</i>	* Kerrymans Creek	580	Larvae eat <i>Poa cita</i> . Recorded near Coronet Pk. (3 km south on Shotover catchment).	29-Jan-05
Lepidoptera	Oecophoridae	<i>Tingena ?melinella</i>	* Kerrymans Creek	580	Larvae eat shrubland litter. Recorded near Coronet Pk. (3 km south on Shotover catchment).	29-Jan-05
Lepidoptera	Oecophoridae	<i>Tingena compsogramma</i>	* Coronet Peak Ski Field	1200	Larvae inhabit shrubland litter	2,3-Feb 1990
Lepidoptera	Oecophoridae	<i>Tingena compsogramma</i>	* Kerrymans Creek	580	Recorded near Coronet Pk. (3 km south on Shotover catchment).	29-Jan-05
Lepidoptera	Oecophoridae	<i>Tingena n. sp.</i>	* Coronet Peak Ski Field	1200		2,3-Feb 1990
Lepidoptera	Oecophoridae	<i>Tingena n. sp.</i>	* Coronet Peak Ski Field	1300-1630		4-Feb-1990
Lepidoptera	Oecophoridae	<i>Tingena ombrodella</i>	Stockyard Creek	800	Larvae inhabit shrubland litter	29-Nov-3-Dec2004
Lepidoptera	Oecophoridae	<i>Tingena paratrimma</i>	* Coronet Peak Ski Field	1200		5-Feb-1990
Lepidoptera	Oecophoridae	<i>Tingena plagiatella</i>	* Kerrymans Creek	580	Larvae inhabit shrubland litter. Recorded near Coronet Pk. (3 km south on Shotover catchment).	29-Jan-05
Lepidoptera	Oecophoridae	<i>Tingena sp. 1</i>	Deep Creek	600		29-Nov-3-Dec2004
Lepidoptera	Oecophoridae	<i>Tingena sp. 1</i>	Stockyard Ck ford	510		29-Nov-3-Dec2004
Lepidoptera	Oecophoridae	<i>Tingena sp. 1</i>	Stockyard Creek	750		29-Nov-3-Dec2004
Lepidoptera	Oecophoridae	<i>Tingena sp. 1</i>	Stockyard Creek	800		29-Nov-3-Dec2004
Lepidoptera	Oecophoridae	<i>Tingena sp. 1</i>	tarns wetland Church Hill Ck	750		29-Nov-3-Dec2004
Lepidoptera	Oecophoridae	<i>Tingena sp. 1</i>	trib. Deep Creek	900		29-Nov-3-Dec2004
Lepidoptera	Oecophoridae	<i>Tingena sp. 2</i>	Deep Creek	560		29-Nov-3-Dec2004
Lepidoptera	Oecophoridae	<i>Tingena sp. 2</i>	Deep Creek	700		29-Nov-3-Dec2004
Lepidoptera	Yponomeutidae	<i>Protosynaema n. sp. 'olearia'</i>	Central Otago	-	Patrick (2000). Larvae eat small leaved <i>Olearia</i> spp. including <i>O. odorata</i> . Threat of extinction status Nationally endangered (Molloy et al. 2002, Hitchmough 2004).	-
Lepidoptera	Psychidae	<i>Reductoderees sp.</i>	* Coronet Peak Ski Field	1300-1630		4-Feb-1990

Lepidoptera	Pterophoridae	<i>Platypfilia replatalis</i>	* Coronet Peak Ski Field	1200	Larvae eat Plantago seed heads	31-Dec-1991
Lepidoptera	Pterophoridae	<i>Pterophorus innotalis</i>	Deep Ck	700	Larvae eat Dichondra	29-Nov-3-Dec2004
Lepidoptera	Pterophoridae	<i>Stenoptilia orites</i>	* Coronet Peak Ski Field	1000-1500	Larvae eat seeding <i>Brachyglottis bellidoides</i>	10-Feb-1981
Lepidoptera	Pterophoridae	<i>Stenoptilia orites</i>	* Coronet Peak Ski Field	1300-1630		4-Feb-1990
Lepidoptera	Pterophoridae	<i>Stenoptilia orites</i>	* Coronet Peak Ski Field	880-1050		3-Dec-1994
Lepidoptera	Pyralidae	<i>Delogenes limodoxa</i>	* Coronet Peak Ski Field	1200	Usually inhabits upland moss bogs	5-Feb-1990
Lepidoptera	Pyralidae	<i>Delogenes limodoxa</i>	Deep Ck	700		29-Nov-3-Dec2004
Lepidoptera	Pyralidae	<i>Diasemia grammalis</i>	* Coronet Peak Ski Field	1200	Inhabits open areas	5-Feb-1990
Lepidoptera	Pyralidae	<i>Diasemia grammalis</i>	* Kerrymans Creek	580	Recorded near Coronet Pk. (3 km south on Shotover catchment).	29-Jan-05
Lepidoptera	Pyralidae	<i>Diasemia grammalis</i>	trib. Deep Ck	1200		29-Nov-3-Dec2004
Lepidoptera	Pyralidae	<i>Eudonia aspidota</i>	* Coronet Peak Ski Field	1200	Type Locality is nearby at Ben Lomond	2,3-Feb 1990
Lepidoptera	Pyralidae	<i>Eudonia aspidota</i>	Devils Elbow	420		14-16-Mar-1993
Lepidoptera	Pyralidae	<i>Eudonia aspidota</i>	* Kerrymans Creek	580	Recorded near Coronet Pk. (3 km south on Shotover catchment).	29-Jan-05
Lepidoptera	Pyralidae	<i>Eudonia aspidota</i>	Stockyard Creek	800		29-Nov-3-Dec2004
Lepidoptera	Pyralidae	<i>Eudonia asterisca</i>	* Kerrymans Creek	580	Recorded near Coronet Pk. (3 km south on Shotover catchment).	29-Jan-05
Lepidoptera	Pyralidae	<i>Eudonia cataxesta</i>	* Coronet Peak Ski Field	1100	Larvae eat <i>Raoulia</i> spp.	11-Mar-1992
Lepidoptera	Pyralidae	<i>Eudonia cataxesta</i>	* Coronet Peak Ski Field	1200		31-Dec-1991
Lepidoptera	Pyralidae	<i>Eudonia cataxesta</i>	* Coronet Peak Ski Field	1200		2,3-Feb 1990
Lepidoptera	Pyralidae	<i>Eudonia cataxesta</i>	Devils Elbow	420		14-16-Mar-1993
Lepidoptera	Pyralidae	<i>Eudonia cataxesta</i>	* Kerrymans Creek	580	Recorded near Coronet Pk. (3 km south on Shotover catchment).	29-Jan-05
Lepidoptera	Pyralidae	<i>Eudonia cataxesta</i>	Stockyard Ck	800		29-Nov-3-Dec2004
Lepidoptera	Pyralidae	<i>Eudonia chalara</i>	* Coronet Peak Ski Field	880-1050	Inhabits grasslands	3-Dec-1994
Lepidoptera	Pyralidae	<i>Eudonia chalara</i>		-	Larvae eat mosses in grassland	29-Nov-3-Dec2004
Lepidoptera	Pyralidae	<i>Eudonia chalara</i>	Stockyard Ck	800		29-Nov-3-Dec2004
Lepidoptera	Pyralidae	<i>Eudonia chalara</i>	trib. Deep Creek	700		29-Nov-3-Dec2004
Lepidoptera	Pyralidae	<i>Eudonia chalara</i>	trib. Station Ck	760		29-Nov-3-Dec2004
Lepidoptera	Pyralidae	<i>Eudonia colpota</i>	* Kerrymans Creek	580	Recorded near Coronet Pk. (3 km south on Shotover catchment).	29-Jan-05
Lepidoptera	Pyralidae	<i>Eudonia crypsinoa</i>	* Coronet Peak Ski Field	1200	Inhabits grassland/herbfield	4-Feb-1990
Lepidoptera	Pyralidae	<i>Eudonia crypsinoa</i>	* Coronet Peak Ski Field	1200		31-Dec-1991
Lepidoptera	Pyralidae	<i>Eudonia crypsinoa</i>	* Coronet Peak Ski Field	1300-1630		4-Feb-1990
Lepidoptera	Pyralidae	<i>Eudonia crypsinoa</i>	* Coronet Peak Ski Field	880-1050		3-Dec-1994
Lepidoptera	Pyralidae	<i>Eudonia crypsinoa</i>	Deep Creek	700		29-Nov-3-Dec2004
Lepidoptera	Pyralidae	<i>Eudonia crypsinoa</i>		-		

RELEASED UNDER THE OFFICIAL INFORMATION ACT

Lepidoptera	Pyralidae	<i>Eudonia crypsinoa</i>	Stockyard Creek	750		29-Nov-3-Dec2004
Lepidoptera	Pyralidae	<i>Eudonia crypsinoa</i>	trib. Deep Creek	900		29-Nov-3-Dec2004
Lepidoptera	Pyralidae	<i>Eudonia cymatias</i>	* Coronet Peak Ski Field	1200	Inhabits rockfaces	2,3-Feb 1990
Lepidoptera	Pyralidae	<i>Eudonia cymatias</i>	* Kerrymans Creek	580	Recorded near Coronet Pk. (3 km south on Shotover catchment).	29-Jan-05
Lepidoptera	Pyralidae	<i>Eudonia cyrtastis</i>	* Coronet Peak Ski Field	1200		31-Dec-1991
Lepidoptera	Pyralidae	<i>Eudonia diptheralis</i>	* Coronet Peak Ski Field	1200	Inhabits open areas	2,3-Feb 1990
Lepidoptera	Pyralidae	<i>Eudonia diptheralis</i>	Stockyard Ck ford	510		29-Nov-3-Dec2004
Lepidoptera	Pyralidae	<i>Eudonia ejuncida</i>	* Coronet Peak Ski Field	1200		2,3-Feb 1990
Lepidoptera	Pyralidae	<i>Eudonia ejuncida</i>	Devils Elbow	420		14-16-Mar-1993
Lepidoptera	Pyralidae	<i>Eudonia ejuncida</i>	* Kerrymans Creek	580	Recorded near Coronet Pk. (3 km south on Shotover catchment).	29-Jan-05
Lepidoptera	Pyralidae	<i>Eudonia epicremna</i>	Deep Creek	560	Larvae eat mosses in alpine wetlands/seepages	29-Nov-3-Dec2004
Lepidoptera	Pyralidae	<i>Eudonia epicremna</i>	Deep Creek	700		29-Nov-3-Dec2004
Lepidoptera	Pyralidae	<i>Eudonia epicremna</i>		-		
Lepidoptera	Pyralidae	<i>Eudonia epicremna</i>	trib. Station Ck	760		29-Nov-3-Dec2004
Lepidoptera	Pyralidae	<i>Eudonia epicremna</i>	trib. Station Ck	800		29-Nov-3-Dec2004
Lepidoptera	Pyralidae	<i>Eudonia feredayi</i>	* Coronet Peak Ski Field	1100	Inhabits open areas	11-Mar-1992
Lepidoptera	Pyralidae	<i>Eudonia feredayi</i>	* Coronet Peak Ski Field	1200		31-Dec-1991
Lepidoptera	Pyralidae	<i>Eudonia feredayi</i>	* Coronet Peak Ski Field	1200		2,3-Feb 1990
Lepidoptera	Pyralidae	<i>Eudonia feredayi</i>	Devils Elbow	420		14-16-Mar-1993
Lepidoptera	Pyralidae	<i>Eudonia feredayi</i>	* Kerrymans Creek	580	Recorded near Coronet Pk. (3 km south on Shotover catchment).	29-Jan-05
Lepidoptera	Pyralidae	<i>Eudonia leptalea</i>	* Coronet Peak Ski Field	1200	Inhabits open areas	2,3-Feb 1990
Lepidoptera	Pyralidae	<i>Eudonia leptalea</i>	* Kerrymans Creek	580	Recorded near Coronet Pk. (3 km south on Shotover catchment).	29-Jan-05
Lepidoptera	Pyralidae	<i>Eudonia manganutis</i>	* Coronet Peak Ski Field	1100	Inhabits rockfaces	11-Mar-1992
Lepidoptera	Pyralidae	<i>Eudonia manganutis</i>	* Coronet Peak Ski Field	1200		4-Feb-1990
Lepidoptera	Pyralidae	<i>Eudonia manganutis</i>	* Coronet Peak Ski Field	1200		2,3-Feb 1990
Lepidoptera	Pyralidae	<i>Eudonia manganutis</i>	Devils Elbow	420		14-16-Mar-1993
Lepidoptera	Pyralidae	<i>Eudonia manganutis</i>	* Kerrymans Creek	580	Recorded near Coronet Pk. (3 km south on Shotover catchment).	29-Jan-05
Lepidoptera	Pyralidae	<i>Eudonia melanaegis</i>	Coronet Peak Ski Field	1200	Inhabits shrubland and forest	31-Dec-1991
Lepidoptera	Pyralidae	<i>Eudonia melanaegis</i>	Coronet Peak Ski Field	1200		2,3-Feb 1990
Lepidoptera	Pyralidae	<i>Eudonia melanaegis</i>	* Kerrymans Creek	580	Recorded near Coronet Pk. (3 km south on Shotover catchment).	29-Jan-05



RELEASED UNDER THE OFFICIAL INFORMATION ACT

Lepidoptera	Pyralidae	<i>Eudonia microphthalmia</i>	* Kerrymans Creek	580	Inhabits rockfaces. Recorded near Coronet Pk. (3 km south on Shotover catchment).	29-Jan-05
Lepidoptera	Pyralidae	<i>Eudonia miniscalalis</i>	Devils Elbow	420	Inhabits understorey mosses	14-16-Mar-1993
Lepidoptera	Pyralidae	<i>Eudonia miniscalalis</i>	* Kerrymans Creek	580	Recorded near Coronet Pk. (3 km south on Shotover catchment).	29-Jan-05
Lepidoptera	Pyralidae	<i>Eudonia miniscalalis</i>	* Coronet Peak Ski Field	1200		2,3-Feb 1990
Lepidoptera	Pyralidae	<i>Eudonia octophora</i>	* Kerrymans Creek	580	Inhabits wetland with rushes. Recorded near Coronet Pk. (3 km south on Shotover catchment).	29-Jan-05
Lepidoptera	Pyralidae	<i>Eudonia oculata</i>	* Coronet Peak Ski Field	1200	An upland species	5-Feb-1990
Lepidoptera	Pyralidae	<i>Eudonia oculata</i>	* Coronet Peak Ski Field	1200		2,3-Feb 1990
Lepidoptera	Pyralidae	<i>Eudonia oreas</i>	* Coronet Peak Ski Field	1300-1630	Type Locality is nearby at Ben Lomond. Endemic to Otago.	4-Feb-1990
Lepidoptera	Pyralidae	<i>Eudonia paltomacha</i>	* Coronet Peak Ski Field	1200	Inhabits wetlands	31-Dec-1991
Lepidoptera	Pyralidae	<i>Eudonia philerga</i>	* Coronet Peak Ski Field	1200	Inhabits rocky areas. Type Locality 'Lake Wakatipu'	5-Feb-1990
Lepidoptera	Pyralidae	<i>Eudonia philerga</i>	* Kerrymans Creek	580	Recorded near Coronet Pk. (3 km south on Shotover catchment).	29-Jan-05
Lepidoptera	Pyralidae	<i>Eudonia psammitis</i>	* Coronet Peak Ski Field	1200	Inhabits snowbank	31-Dec-1991
Lepidoptera	Pyralidae	<i>Eudonia rakaiaensis</i>	* Kerrymans Creek	580	Recorded near Coronet Pk. (3 km south on Shotover catchment).	29-Jan-05
Lepidoptera	Pyralidae	<i>Eudonia sabulosella'</i>	* Coronet Peak Ski Field	1200		31-Dec-1991
Lepidoptera	Pyralidae	<i>Eudonia sabulosella'</i>	* Coronet Peak Ski Field	1200		17-Feb-1993
Lepidoptera	Pyralidae	<i>Eudonia sabulosella'</i>	* Coronet Peak Ski Field	1200		2,3-Feb 1990
Lepidoptera	Pyralidae	<i>Eudonia sabulosella'</i>	* Coronet Peak Ski Field	880-1050		3-Dec-1994
Lepidoptera	Pyralidae	<i>Eudonia sabulosella'</i>	Deep Ck	600		29-Nov-3-Dec2004
Lepidoptera	Pyralidae	<i>Eudonia sabulosella'</i>	* Kerrymans Creek	580	Recorded near Coronet Pk. (3 km south on Shotover catchment).	29-Jan-05
Lepidoptera	Pyralidae	<i>Eudonia sabulosella'</i>		-		29-Nov-3-Dec2004
Lepidoptera	Pyralidae	<i>Eudonia sabulosella'</i>	Stockyard Ck	800		29-Nov-3-Dec2004
Lepidoptera	Pyralidae	<i>Eudonia sabulosella'</i>	tarns wetland Church Hill Ck	770		29-Nov-3-Dec2004
Lepidoptera	Pyralidae	<i>Eudonia sabulosella'</i>	trib. Station Ck	800		29-Nov-3-Dec2004
Lepidoptera	Pyralidae	<i>Eudonia steropaea</i>	* Kerrymans Creek	580	Recorded near Coronet Pk. (3 km south on Shotover catchment).	29-Jan-05
Lepidoptera	Pyralidae	<i>Eudonia submarginalis</i>	* Kerrymans Creek	580	Recorded near Coronet Pk. (3 km south on Shotover catchment).	29-Jan-05
Lepidoptera	Pyralidae	<i>Eudonia submarginalis</i>	Stockyard Ck ford	510		29-Nov-3-Dec2004

Lepidoptera	Pyralidae	<i>Eudonia trivirgata</i>	* Coronet Peak Ski Field	880-1050		3-Dec-1994
Lepidoptera	Pyralidae	<i>Eudonia trivirgata</i>		-		29-Nov-3-Dec2004
Lepidoptera	Pyralidae	<i>Eudonia turneri</i>	* Coronet Peak Ski Field	1200		31-Dec-1991
Lepidoptera	Pyralidae	<i>Gadira acerella</i>	* Coronet Peak Ski Field	1200	Larvae eat mosses and inhabit bluffs	5-Feb-1990
Lepidoptera	Pyralidae	<i>Gadira acerella</i>	* Kerrymans Creek	580	Recorded near Coronet Pk. (3 km south on Shotover catchment).	29-Jan-05
Lepidoptera	Pyralidae	<i>Glaucocharis epiphaea</i>	* Coronet Peak Ski Field	1200	Larvae likely eat mosses. Inhabits wetlands.	31-Dec-1991
Lepidoptera	Pyralidae	<i>Glaucocharis epiphaea</i>	* Kerrymans Creek	580	Recorded near Coronet Pk. (3 km south on Shotover catchment).	29-Jan-05
Lepidoptera	Pyralidae	<i>Glaucocharis helioctypa</i>	* Coronet Peak Ski Field	1000-1500	Larvae likely eat mosses. Inhabits wetlands. Type Locality 'Lake Wakatipu'	1-Jan-1978
Lepidoptera	Pyralidae	<i>Glaucocharis helioctypa</i>	Deep Ck	560		29-Nov-3-Dec2004
Lepidoptera	Pyralidae	<i>Glaucocharis helioctypa</i>	Deep Ck-Green Gate Ck	550		29-Nov-3-Dec2004
Lepidoptera	Pyralidae	<i>Glaucocharis lepidella</i>	* Kerrymans Creek	580	Recorded near Coronet Pk. (3 km south on Shotover catchment).	29-Jan-05
Lepidoptera	Pyralidae	<i>Glaucocharis pyrsophanes</i>	Devils Elbow	420		14-16-Mar-1993
Lepidoptera	Pyralidae	<i>Glaucocharis pyrsophanes</i>	* Kerrymans Creek	580	Recorded near Coronet Pk. (3 km south on Shotover catchment).	29-Jan-05
Lepidoptera	Pyralidae	<i>Heliothela atra</i>	* Coronet Peak Ski Field	1200	Inhabits dryland tussock	17-Feb-1993
Lepidoptera	Pyralidae	<i>Heliothela atra</i>	* Coronet Peak Ski Field	1300-1630		4-Feb-1990
Lepidoptera	Pyralidae	<i>Mnesictena adversa</i>	* Coronet Peak Ski Field	1200	Type Locality is nearby at Queenstown	4-Feb-1990
Lepidoptera	Pyralidae	<i>Mnesictena flavidalis</i>	* Coronet Peak Ski Field	1200		4-Feb-1990
Lepidoptera	Pyralidae	<i>Mnesictena flavidalis</i>	Devils Elbow	420		14-16-Mar-1993
Lepidoptera	Pyralidae	<i>Mnesictena flavidalis</i>	* Kerrymans Creek	580	Recorded near Coronet Pk. (3 km south on Shotover catchment).	29-Jan-05
Lepidoptera	Pyralidae	<i>Mnesictena marmorata</i>	Devils Elbow	420		14-16-Mar-1993
Lepidoptera	Pyralidae	<i>Mnesictena marmorata</i>	Stockyard Ck	800	Larvae eat Urtica	29-Nov-3-Dec2004
Lepidoptera	Pyralidae	<i>Mnesictena notata</i>	* Coronet Peak Ski Field	1100	Larvae eat Aceana	11-Mar-1992
Lepidoptera	Pyralidae	<i>Orocrambus aethonellus</i>	* Coronet Peak Ski Field	880-1050		3-Dec-1994
Lepidoptera	Pyralidae	<i>Orocrambus aethonellus</i>		-	Inhabits damp grassland	29-Nov-3-Dec2004
Lepidoptera	Pyralidae	<i>Orocrambus aethonellus</i>	* Coronet Peak Ski Field	1000-1500		7-Dec-1980
Lepidoptera	Pyralidae	<i>Orocrambus callirrhous</i>	* Coronet Peak Ski Field	1100		11-Mar-1992
Lepidoptera	Pyralidae	<i>Orocrambus corruptus</i>	Deep Creek	600	Common inhabitant of short tussock	29-Nov-3-Dec2004
Lepidoptera	Pyralidae	<i>Orocrambus corruptus</i>	tarns wetland Church Hill Ck	710		29-Nov-3-Dec2004
Lepidoptera	Pyralidae	<i>Orocrambus corruptus</i>	tarns wetland Church Hill Ck	750		29-Nov-3-Dec2004
Lepidoptera	Pyralidae	<i>Orocrambus corruptus</i>	trib. Deep Creek	1000		29-Nov-3-Dec2004

RELEASED UNDER THE OFFICIAL INFORMATION ACT

Lepidoptera	Pyralidae	<i>Orocrambus corruptus</i>	trib. Station Ck	760		29-Nov-3-Dec2004
Lepidoptera	Pyralidae	<i>Orocrambus corruptus</i>	trib. Station Ck	800		29-Nov-3-Dec2004
Lepidoptera	Pyralidae	<i>Orocrambus crenaeus</i>	* Coronet Peak Ski Field	1200	Inhabits alpine damp grassland	31-Dec-1991
Lepidoptera	Pyralidae	<i>Orocrambus crenaeus</i>	* Coronet Peak Ski Field	1300-1630		4-Feb-1990
Lepidoptera	Pyralidae	<i>Orocrambus cyclopicus</i>	* Coronet Peak Ski Field	1100	Inhabits grassland	11-Mar-1992
Lepidoptera	Pyralidae	<i>Orocrambus cyclopicus</i>	Devils Elbow	420		14-16-Mar-1993
Lepidoptera	Pyralidae	<i>Orocrambus dicrenellus</i>	* Coronet Peak Ski Field	1650		12-Mar-1992
Lepidoptera	Pyralidae	<i>Orocrambus dicrenellus</i>	* Coronet Peak Ski Field	1200		17-Feb-1993
Lepidoptera	Pyralidae	<i>Orocrambus dicrenellus</i>	* Coronet Peak Ski Field	>?700		19-Feb-1993
Lepidoptera	Pyralidae	<i>Orocrambus dicrenellus</i>	* Coronet Peak Ski Field	1300-1630		4-Feb-1990
Lepidoptera	Pyralidae	<i>Orocrambus dicrenellus</i>		-	Larvae eat upland Chionocloa, endemic to mountains of Canterbury and Otago	29-Nov-3-Dec2004
Lepidoptera	Pyralidae	<i>Orocrambus dicrenellus</i>	* Coronet Peak Ski Field	1200		2,3-Feb 1990
Lepidoptera	Pyralidae	<i>Orocrambus enchophorus</i>	Devils Elbow	420		14-16-Mar-1993
Lepidoptera	Pyralidae	<i>Orocrambus ephorus</i>	* Coronet Peak Ski Field	1200	Inhabits damp areas	5-Feb-1990
Lepidoptera	Pyralidae	<i>Orocrambus ephorus</i>	* Coronet Peak Ski Field	1200		2,3-Feb 1990
Lepidoptera	Pyralidae	<i>Orocrambus ephorus</i>	* Kerrymans Creek	580	Recorded near Coronet Pk. (3 km south on Shotover catchment).	29-Jan-05
Lepidoptera	Pyralidae	<i>Orocrambus flexuosellus</i>	* Coronet Peak Ski Field	1200		31-Dec-1991
Lepidoptera	Pyralidae	<i>Orocrambus flexuosellus</i>	* Coronet Peak Ski Field	1200		2,3-Feb 1990
Lepidoptera	Pyralidae	<i>Orocrambus flexuosellus</i>	* Kerrymans Creek	580	Recorded near Coronet Pk. (3 km south on Shotover catchment).	29-Jan-05
Lepidoptera	Pyralidae	<i>Orocrambus flexuosellus</i>	Stockyard Ck	800		29-Nov-3-Dec2004
Lepidoptera	Pyralidae	<i>Orocrambus flexuosellus</i>	tarns wetland Church Hill Ck	770		29-Nov-3-Dec2004
Lepidoptera	Pyralidae	<i>Orocrambus harpophorus</i>	* Coronet Peak Ski Field	1200		31-Dec-1991
Lepidoptera	Pyralidae	<i>Orocrambus harpophorus</i>	* Coronet Peak Ski Field	1200	Type Locality 'Lake Wakatipu'	2,3-Feb 1990
Lepidoptera	Pyralidae	<i>Orocrambus harpophorus</i>	* Kerrymans Creek	580	Recorded near Coronet Pk. (3 km south on Shotover catchment).	29-Jan-05
Lepidoptera	Pyralidae	<i>Orocrambus lewisi</i>	* Kerrymans Creek	580	Larvae eat Poa and Festuca. Recorded near Coronet Pk. (3 km south on Shotover catchment).	29-Jan-05
Lepidoptera	Pyralidae	<i>Orocrambus macharistes</i>	* Coronet Peak Ski Field	1000-1500	Larvae eat Poa colensoi in uplands.	1-Jan-1978
Lepidoptera	Pyralidae	<i>Orocrambus macharistes</i>	trib. Deep Creek	1200		29-Nov-3-Dec2004
Lepidoptera	Pyralidae	<i>Orocrambus n. sp.</i>	* Coronet Peak Ski Field	1200		2,3-Feb 1990
Lepidoptera	Pyralidae	<i>Orocrambus parascenus</i>	* Coronet Peak Ski Field	1200	An upland species of west Otago. Type Locality is nearby at Ben Lomond	31-Dec-1991

Lepidoptera	Pyralidae	<i>Orocrambus philpotti</i>	* Coronet Peak Ski Field	1200		31-Dec-1991
Lepidoptera	Pyralidae	<i>Orocrambus ramosellus</i>	* Coronet Peak Ski Field	1200		2,3-Feb 1990
Lepidoptera	Pyralidae	<i>Orocrambus ramosellus</i>	Deep Creek	600		29-Nov-3-Dec2004
Lepidoptera	Pyralidae	<i>Orocrambus ramosellus</i>	* Kerrymans Creek	580	Recorded near Coronet Pk. (3 km south on Shotover catchment).	29-Jan-05
Lepidoptera	Pyralidae	<i>Orocrambus ramosellus</i>	Stockyard Ck	800		29-Nov-3-Dec2004
Lepidoptera	Pyralidae	<i>Orocrambus ramosellus</i>	tarns wetland Church Hill Ck	710		29-Nov-3-Dec2004
Lepidoptera	Pyralidae	<i>Orocrambus ramosellus</i>	trib. Deep Ck	1000		29-Nov-3-Dec2004
Lepidoptera	Pyralidae	<i>Orocrambus scoparioides</i>	* Coronet Peak Ski Field	>700	Inhabits moss bog margins. Type Locality is nearby at Ben Lomond	19-Feb-1993
Lepidoptera	Pyralidae	<i>Orocrambus sophistes</i>	Devils Elbow	420	Threat of extinction status Nationally endangered (Molloy et al. 2002, Hitchmough 2004). Rare and local in western and Central Otago & Mackenzie Country only. Female short-winged. Native short tussock grasslands.	14-16-Mar-1993
Lepidoptera	Pyralidae	<i>Orocrambus vitellus</i>	Deep Creek	700		29-Nov-3-Dec2004
Lepidoptera	Pyralidae	<i>Orocrambus vitellus</i>	* Kerrymans Creek	580	Recorded near Coronet Pk. (3 km south on Shotover catchment).	29-Jan-05
Lepidoptera	Pyralidae	<i>Orocrambus vitellus</i>	Stockyard Ck	800		29-Nov-3-Dec2004
Lepidoptera	Pyralidae	<i>Orocrambus vitellus</i>	tarns wetland Church Hill Ck	750		29-Nov-3-Dec2004
Lepidoptera	Pyralidae	<i>Orocrambus vulgaris</i>	* Coronet Peak Ski Field	1100		11-Mar-1992
Lepidoptera	Pyralidae	<i>Orocrambus vulgaris</i>	Devils Elbow	420		14-16-Mar-1993
Lepidoptera	Pyralidae	<i>Orocrambus vulgaris</i>	* Kerrymans Creek	580	Recorded near Coronet Pk. (3 km south on Shotover catchment).	29-Jan-05
Lepidoptera	Pyralidae	<i>Patagoniodes farinaria</i>	* Kerrymans Creek	580	Inhabits grasslands. Native to Tasmania and New Zealand. Recorded near Coronet Pk. (3 km south on Shotover catchment).	29-Jan-05
Lepidoptera	Pyralidae	<i>Scoparia asaluta</i>	* Coronet Peak Ski Field	1200	Type Locality 'Lake Wakatipu'	5-Feb-1990
Lepidoptera	Pyralidae	<i>Scoparia asaluta</i>	* Kerrymans Creek	580	Recorded near Coronet Pk. (3 km south on Shotover catchment).	29-Jan-05
Lepidoptera	Pyralidae	<i>Scoparia autochroa</i>	trib. Deep Creek	1200	Inhabits tall tussock	29-Nov-3-Dec2004
Lepidoptera	Pyralidae	<i>Scoparia cyamenta</i>	* Kerrymans Creek	580	Recorded near Coronet Pk. (3 km south on Shotover catchment).	29-Jan-05

Lepidoptera	Pyralidae	<i>Scoparia exilis</i>	* Coronet Peak Ski Field	880-1050		3-Dec-1994
Lepidoptera	Pyralidae	<i>Scoparia famularis</i>	* Coronet Peak Ski Field	1620	Inhabits high alpine	12-Mar-1992
Lepidoptera	Pyralidae	<i>Scoparia famularis</i>	* Coronet Peak Ski Field	1300-1630		4-Feb-1990
Lepidoptera	Pyralidae	<i>Scoparia indistinctalis</i>	* Coronet Peak Ski Field	1200		5-Feb-1990
Lepidoptera	Pyralidae	<i>Scoparia limatula</i>	* Kerrymans Creek	580	Recorded near Coronet Pk. (3 km south on Shotover catchment).	29-Jan-05
Lepidoptera	Pyralidae	<i>Scoparia nipospora</i>	* Coronet Peak Ski Field	1200	Inhabits upland grassland	2,3-Feb 1990
Lepidoptera	Pyralidae	<i>Scoparia nipospora</i>	* Coronet Peak Ski Field	1300-1630		4-Feb-1990
Lepidoptera	Pyralidae	<i>Scoparia noementis</i>	trib. Deep Creek	1200	Inhabits snowbanks and cushion bogs. Type Locality is nearby at Ben Lomond	29-Nov-3-Dec2004
Lepidoptera	Pyralidae	<i>Scoparia petrina</i>	* Coronet Peak Ski Field	1000-1500	Inhabits alpine grassland	3-Feb-1989
Lepidoptera	Pyralidae	<i>Scoparia scripta</i>	* Coronet Peak Ski Field	1200	Larvae eat streamside Epilobium	2,3-Feb 1990
Lepidoptera	Pyralidae	<i>Scoparia sideraspis</i>	* Coronet Peak Ski Field	1300-1630	Inhabits bare areas	4-Feb-1990
Lepidoptera	Pyralidae	<i>Scoparia trapezophora</i>	* Coronet Peak Ski Field	1200	Commonly inhabits damp shrubland	31-Dec-1991
Lepidoptera	Pyralidae	<i>Scoparia ustimacula</i>	* Kerrymans Creek	580	Larvae eat Hydrocolyle – common and widespread in forested areas. Recorded near Coronet Pk. (3 km south on Shotover catchment).	29-Jan-05
Lepidoptera	Pyralidae	<i>Tawhitia glaucophanes</i>	* Coronet Peak Ski Field	1300-1630	Inhabits upland fell. Type Locality 'Lake Wakatipu'	4-Feb-1990
Lepidoptera	Satyridae	<i>Argyrophenax antipodum</i>	* Coronet Peak Ski Field	1200	Tussock ringlet butterfly. Larvae eat tussock spp.	17-Feb-1993
Lepidoptera	Satyridae	<i>Argyrophenax antipodum</i>	* Coronet Peak Ski Field	1250		12-Mar-1992
Lepidoptera	Satyridae	<i>Argyrophenax antipodum</i>	* Coronet Peak Ski Field	1300-1630		4-Feb-1990
Lepidoptera	Satyridae	<i>Argyrophenax antipodum</i>	* Coronet Peak Ski Field	880-1050		3-Dec-1994
Lepidoptera	Tineidae	<i>Lysiphragma episcyla</i>	* Kerrymans Creek	580	Recorded near Coronet Pk. (3 km south on Shotover catchment).	29-Jan-05
Lepidoptera	Tineidae	<i>Monopis etbelella</i>	* Coronet Peak Ski Field	1200	Exotic moth, larvae eat sheeps wool.	5-Feb-1990
Lepidoptera	Tortricidae	<i>Apoctena conditana</i>	* Kerrymans Creek	580	Recorded near Coronet Pk. (3 km south on Shotover catchment).	29-Jan-05
Lepidoptera	Tortricidae	<i>Ascerodes prochlora</i>	* Coronet Peak Ski Field	1300-1630		4-Feb-1990
Lepidoptera	Tortricidae	<i>Capua semiferana</i>	* Coronet Peak Ski Field	1200	Larvae eat litter	5-Feb-1990
Lepidoptera	Tortricidae	<i>Capua semiferana</i>	Devils Elbow	420		14-16-Mar-1993
Lepidoptera	Tortricidae	<i>Capua semiferana</i>	* Kerrymans Creek	580	Recorded near Coronet Pk. (3 km south on Shotover catchment).	29-Jan-05
Lepidoptera	Tortricidae	<i>Capua semiferana</i>		-		
Lepidoptera	Tortricidae	<i>Epichorista aspistana</i>	* Coronet Peak Ski Field	1200	Larvae eat Acaena	17-Feb-1993
Lepidoptera	Tortricidae	<i>Epichorista aspistana</i>	* Coronet Peak Ski Field	1200		2,3-Feb 1990

Lepidoptera	Tortricidae	<i>Epichorista aspistana</i>	* Coronet Peak Ski Field	1300-1630		4-Feb-1990
Lepidoptera	Tortricidae	<i>Epichorista emphanes</i>	* Kerrymans Creek	580	Recorded near Coronet Pk. (3 km south on Shotover catchment).	29-Jan-05
Lepidoptera	Tortricidae	<i>Epichorista siriana</i>	* Coronet Peak Ski Field	1200	Larvae eat grasses	17-Feb-1993
Lepidoptera	Tortricidae	<i>Epichorista siriana</i>	* Coronet Peak Ski Field	1300-1630		4-Feb-1990
Lepidoptera	Tortricidae	<i>Epichorista tenebrosa</i>	* Coronet Peak Ski Field	1200	Endemic to Central Otago. Females short winged. Type Locality is nearby at Ben Lomond	2,3-Feb 1990
Lepidoptera	Tortricidae	<i>Epichorista tenebrosa</i>	* Coronet Peak Ski Field	1300-1630		4-Feb-1990
Lepidoptera	Tortricidae	<i>Eurythecta sp.</i>	Stockyard Ck ford	510		29-Nov-3-Dec2004
Lepidoptera	Tortricidae	<i>Eurythecta zelaea</i>	Stockyard Ck ford	510	Larvae inhabit short swards in dry areas. Females are flightless.	29-Nov-3-Dec2004
Lepidoptera	Tortricidae	<i>Gelophaula palliata</i>	Carmichaels Spur	1300	Larvae in Celmisia stems	29-Nov-3-Dec2004
Lepidoptera	Tortricidae	<i>Harmaloga n.sp.</i>	* Coronet Peak Ski Field	1100		11-Mar-1992
Lepidoptera	Tortricidae	<i>Harmologa amplexana</i>	Devils Elbow	420	Larvae eat Muehlenbeckia complexa including perched dead leaves.	14-16-Mar-1993
Lepidoptera	Tortricidae	<i>Harmologa amplexana</i>	* Kerrymans Creek	580	Recorded near Coronet Pk. (3 km south on Shotover catchment).	29-Jan-05
Lepidoptera	Tortricidae	<i>Harmologa n. sp.</i>	* Kerrymans Creek	580	Recorded near Coronet Pk. (3 km south on Shotover catchment).	29-Jan-05
Lepidoptera	Tortricidae	<i>Harmologa oblongana</i>	Devils Elbow	420	Inhabits shrubland	14-16-Mar-1993
Lepidoptera	Tortricidae	<i>Harmologa oblongana</i>	* Kerrymans Creek	580	Recorded near Coronet Pk. (3 km south on Shotover catchment).	29-Jan-05
Lepidoptera	Tortricidae	<i>Harmologa scoliastes</i>	* Kerrymans Creek	580	Larvae associated with Muehlenbeckia. Recorded near Coronet Pk. (3 km south on Shotover catchment).	29-Jan-05
Lepidoptera	Tortricidae	<i>Maoritens n. sp.</i>	* Kerrymans Creek	580	Recorded near Coronet Pk. (3 km south on Shotover catchment).	29-Jan-05
Lepidoptera	Tortricidae	<i>Merophyas leucaniana</i>	* Coronet Peak Ski Field	1200		2,3-Feb 1990
Lepidoptera	Tortricidae	<i>Merophyas leucaniana</i>	Devils Elbow	420		14-16-Mar-1993
Lepidoptera	Tortricidae	<i>Merophyas leucaniana</i>	* Kerrymans Creek	580	Recorded near Coronet Pk. (3 km south on Shotover catchment).	29-Jan-05
Lepidoptera	Tortricidae	<i>Proteodes carnifex</i>	* Coronet Peak Ski Field	1100	Larvae eat Nothofagus spp.	11-Mar-1992
Lepidoptera	Tortricidae	<i>Proteodes carnifex</i>	* Coronet Peak Ski Field	1200		5-Feb-1990
Lepidoptera	Tortricidae	<i>Proteodes carnifex</i>	* Kerrymans Creek	580	Recorded near Coronet Pk. (3 km south on Shotover catchment).	29-Jan-05
Lepidoptera	Tortricidae	<i>Proteodes pictoriana</i>	* Coronet Peak Ski Field	1200	Larvae eat Nothofagus spp.	5-Feb-1990
Lepidoptera	Tortricidae	<i>Proteodes pictoriana</i>	* Coronet Peak Ski Field	1200		2,3-Feb 1990

Lepidoptera	Tortricidae	<i>Protiithona fugitivana</i>	* Coronet Peak Ski Field	1250	Larvae eat Myriophyllum in ponded waters	12-Mar-1992
Lepidoptera	Tortricidae	<i>Pyrgotis n. sp.</i>	Central Otago	-	Patrick (2000). Larvae eat small leaved <i>Olearia</i> spp. including <i>O. odorata</i> . Threat of extinction status Nationally vulnerable (Molloy et al. 2002, Hitchmough 2004).	-
Lepidoptera	Tortricidae	<i>Pyrgotis n. sp. 'olearia'</i>	* Kerrymans Creek	580	Recorded near Coronet Pk. (3 km south on Shotover catchment).	29-Jan-05
Lepidoptera	Tortricidae	<i>Pyrgotis plagiatana</i>	* Kerrymans Creek	580	Inhabits shrubland. Recorded near Coronet Pk. (3 km south on Shotover catchment).	29-Jan-05
Lepidoptera	Tortricidae	<i>Tauroscopa trapezitis</i>	* Coronet Peak Ski Field	1000-1500	Inhabits alpine flush	1-Jan-1978
Lepidoptera	Yponomeutidae	<i>Chrysorthenches porphyritis</i>	* Coronet Peak Ski Field	1200	Larvae eat Podocarpus hallii	2,3-Feb 1990
Lepidoptera	Yponomeutidae	<i>Chrysorthenches porphyritis</i>	* Coronet Peak Ski Field	1000-1500		26-Apr-1980
Lepidoptera	Yponomeutidae	<i>Orthenches dictyarcha</i>	* Coronet Peak Ski Field	1200		5-Feb-1990
Lepidoptera	Yponomeutidae	<i>Orthenches dictyarcha</i>	* Coronet Peak Ski Field	1200		2,3-Feb 1990
Lepidoptera	Yponomeutidae	<i>Orthenches salueta</i>	* Coronet Peak Ski Field	1200	Larvae eat small leaved Drachophyllum spp.	2,3-Feb 1990
Lepidoptera	Yponomeutidae	<i>Plutella psammochroa</i>	* Coronet Peak Ski Field	1100	Inhabits carex sedgeland	11-Mar-1992
Lepidoptera	Yponomeutidae	<i>Plutella psammochroa</i>	* Coronet Peak Ski Field	1200		2,3-Feb 1990
Lepidoptera	Yponomeutidae	<i>Plutella sp.</i>	* Coronet Peak Ski Field	1300-1630		4-Feb-1990
Lepidoptera	Yponomeutidae	<i>Plutella xylostella</i>	* Coronet Peak Ski Field	1200		2,3-Feb 1990
Lepidoptera	Yponomeutidae	<i>Protosynaema quaestuosa</i>	* Coronet Peak Ski Field	1200	Larvae eat Carex spp. Type Locality is nearby at Mt Aurum	5-Feb-1990
Lepidoptera	Yponomeutidae	<i>Protosynaema quaestuosa</i>	Deep Ck	560		29-Nov-3-Dec2004
Lepidoptera	Yponomeutidae	<i>Protosynaema steropulcha</i>	Deep Ck-Green Gate Ck	550	Larvae eat grasses in wetlands	29-Nov-3-Dec2004
Lepidoptera	Yponomeutidae	<i>Protosynaema steropulcha</i>	Deep Ck-Green Gate Ck	660		29-Nov-3-Dec2004
Lepidoptera	Yponomeutidae	<i>Protosynaema steropulcha</i>	Deep Creek	560		29-Nov-3-Dec2004
Lepidoptera	Yponomeutidae	<i>Protosynaema steropulcha</i>	Deep Creek	600		29-Nov-3-Dec2004
Lepidoptera	Yponomeutidae	<i>Protosynaema steropulcha</i>	Deep Creek	700		29-Nov-3-Dec2004
Mecoptera	Nannochoristidae	<i>Nannochorista philpotti</i>	* Coronet Peak Ski Field	>?700	Scorpionfly, predatory in small streams	19-Feb-1993
Neuroptera	Hemerobiidae	<i>Drepanacula binocula</i>	Deep Ck	700	Exotic lacewing -aphid predator	29-Nov-3-Dec2004
Neuroptera	Hemerobiidae	<i>Drepanacula binocula</i>	Deep Ck-Green Gate Ck	550		29-Nov-3-Dec2004
Onychophora	Peripatopsidae	<i>Peripatopsis sp.</i>	Vanguard Peak	1670	An unnamed upland velvet worm of Otago Mountains	29-Nov-3-Dec2004
Opiliones	Monscutidae	<i>Pantopsalis sp.</i>	trib. Station Ck	800		29-Nov-3-Dec2004
Orthoptera	Acrididae	<i>Alpinacris tumidicauda</i>	Malings Peak	1250	An upland grasshopper	29-Nov-3-Dec2004

RELEASED UNDER THE OFFICIAL INFORMATION ACT

Orthoptera	Acrididae	<i>Alpinacris tumidicauda</i>	Vanguard Peak	1500		29-Nov-3-Dec2004
Orthoptera	Acrididae	<i>Phaulacridium sp.</i>	Deep Creek	600	In the region common in montane open grassland and river beds	29-Nov-3-Dec2004
Orthoptera	Acrididae	<i>Sigauss australis</i>	Carmichaels Spur	1500		29-Nov-3-Dec2004
Orthoptera	Acrididae	<i>Sigauss australis</i>	Carmichaels Spur	1680		29-Nov-3-Dec2004
Orthoptera	Acrididae	<i>Sigauss australis</i>	Deep Creek	900		29-Nov-3-Dec2004
Orthoptera	Acrididae	<i>Sigauss australis</i>	Malings Peak	1250		29-Nov-3-Dec2004
Orthoptera	Acrididae	<i>Sigauss australis</i>	Stockyard Creek	800		29-Nov-3-Dec2004
Orthoptera	Acrididae	<i>Sigauss australis</i>	Vanguard Peak	1500		29-Nov-3-Dec2004
Orthoptera	Anostomatidae	<i>Hemiandrus focalis</i>	Carmichaels Spur	1300	A widespread ground weta	29-Nov-3-Dec2004
Orthoptera	Anostomatidae	<i>Hemiandrus focalis</i>	tarns wetland Church Hill Ck	710		29-Nov-3-Dec2004
Orthoptera	Anostomatidae	<i>Hemiandrus focalis</i>	Vanguard Peak	1650		29-Nov-3-Dec2004
Plecoptera	Antarctoperlinae	<i>Taraperla howesi</i>	trib. Station Ck	800		29-Nov-3-Dec2004
Plecoptera	Antarctoperlinae	<i>Zealandobius furcillatus</i>	trib. Station Ck	800		29-Nov-3-Dec2004
Plecoptera	Antarctoperlinae	<i>Zealandobius sp. aff. furcillatus</i>	Deep Creek	560-700		29-Nov-3-Dec2004
Plecoptera	Antarctoperlinae	<i>Zealandobius sp. aff. furcillatus</i>	tarns wetland Church Hill Ck	770		29-Nov-3-Dec2004
Plecoptera	Antarctoperlinae	<i>Zealandobius sp. aff. furcillatus</i>	trib. Deep Creek	1200		29-Nov-3-Dec2004
Plecoptera	Antarctoperlinae	<i>Zealandobius truncus</i>	trib. Station Ck	800	Endemic to Central Otago and Wellington	29-Nov-3-Dec2004
Plecoptera	Antarctoperlinae	<i>Zealandobius uniramous</i>		-	Larvae inhabit small montane streams	
Plecoptera	Austroperlidae	<i>Austroperla cyrene</i>	tarns wetland Church Hill Ck	770		29-Nov-3-Dec2004
Plecoptera	Austroperlidae	<i>Austroperla cyrene</i>	trib. Station Ck	800		29-Nov-3-Dec2004
Plecoptera	Grippoptenigidae	<i>Zealandoperla fenestrata</i>	trib. Deep Creek	1100		29-Nov-3-Dec2004
Plecoptera	Grippoptenigidae	<i>Zealandoperla fenestrata</i>	trib. Station Ck	800		29-Nov-3-Dec2004
Plecoptera	Grippoptenigidae	<i>Zealandoperla pennulata</i>	* Coronet Peak Ski Field	>?700		19-Feb-1993
Plecoptera	Notonemouridae	<i>Christoperla wabaroa</i>		-		
Plecoptera	Notonemouridae	<i>Halticoperla tara</i>	* Coronet Peak Ski Field	>?700	Waterfall stonefly common around falls in the Main Divide. Eastern most records are in the Eyre Mountains and Harris Mountains.	19-Feb-1993
Plecoptera	Notonemouridae	<i>Halticoperla tara</i>	trib. Station Ck	800		29-Nov-3-Dec2004
Plecoptera	Notonemouridae	<i>Spaniocerca longicauda</i>	* Coronet Peak Ski Field	880-1050	Inhabits vegetated streams	3-Dec-1994
Plecoptera	Notonemouridae	<i>Spaniocerca longicauda</i>	trib. Deep Creek	1200		29-Nov-3-Dec2004
Plecoptera	Notonemouridae	<i>Spaniocerca longicauda</i>	trib. Station Ck	800		29-Nov-3-Dec2004
Plecoptera	Notonemouridae	<i>Spaniocercoides howesi</i>	Deep Creek	560-700		29-Nov-3-Dec2004
Plecoptera	Notonemouridae	<i>Spaniocercoides howesi</i>	trib. Deep Creek	1100		29-Nov-3-Dec2004
Trichoptera	Hydrobiosidae	<i>Hydrobiosis chalcodes</i>	* Coronet Peak Ski Field	880-1050		3-Dec-1994
Trichoptera	Hydrobiosidae	<i>Hydrobiosis kiddi</i>	* Coronet Peak Ski Field	1200		31-Dec-1991



Trichoptera	Hydrobiosidae	<i>Hydrobiosis leiddi</i>	* Coronet Peak Ski Field	>?700		19-Feb-1993
Trichoptera	Hydrobiosidae	<i>Hydrobiosis spatbulata</i>	trib. Station Ck	800		29-Nov-3-Dec2004
Trichoptera	Hydrobiosidae	<i>Tiphobiosis ?veniflex</i>	Bridal Veil Falls	500		30-Mar-1991
Trichoptera	Hydrobiosidae	<i>Tiphobiosis montana</i>	* Coronet Peak Ski Field	1200		30-Mar-1991
Trichoptera	Hydrobiosidae	<i>Tiphobiosis sp.</i>	* Coronet Peak Ski Field	1200		31-Dec-1991
Trichoptera	Leptoceridae	<i>Hudsonema alienum</i>	Carmichaels Spur	1500	Inhabits wet flushes and streams	29-Nov-3-Dec2004
Trichoptera	Leptoceridae	<i>Hudsonema alienum</i>	* Coronet Peak Ski Field	1200		31-Dec-1991
Trichoptera	Leptoceridae	<i>Hudsonema alienum</i>	* Coronet Peak Ski Field	>?700		19-Feb-1993
Trichoptera	Leptoceridae	<i>Hudsonema alienum</i>	* Coronet Peak Ski Field	880-1050		3-Dec-1994
Trichoptera	Leptoceridae	<i>Hudsonema alienum</i>	tarns wetland Church Hill Ck	770		29-Nov-3-Dec2004
Trichoptera	Leptoceridae	<i>Oecetis unicolor</i>	tarns wetland Church Hill Ck	770		29-Nov-3-Dec2004
Trichoptera	Leptoceridae	<i>Oecetis similis</i>	* Coronet Peak Ski Field	1200		31-Dec-1991
Trichoptera	Oeconesidae	<i>Pseudoconesus stramineus</i>	tarns wetland Church Hill Ck	770		29-Nov-3-Dec2004
Trichoptera	Philorheithridae	<i>Philorheithrus n. sp.</i>	Deep Creek	700		29-Nov-3-Dec2004