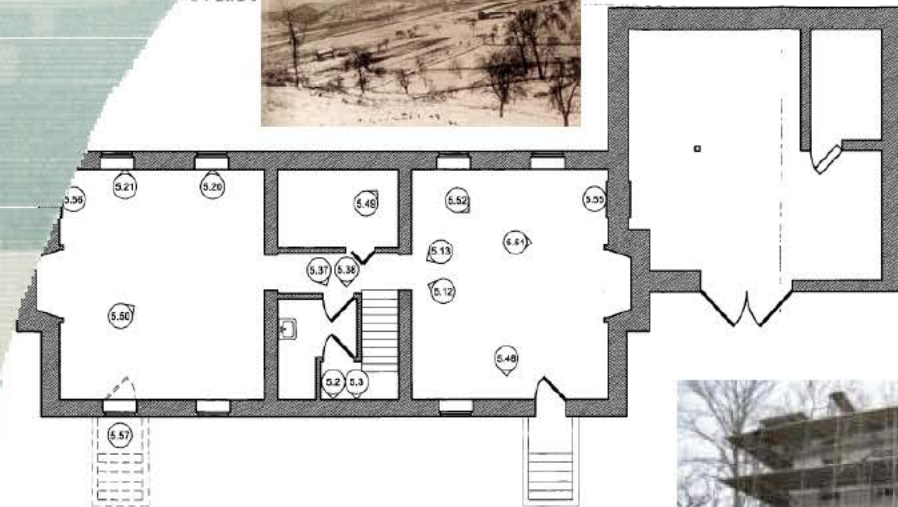
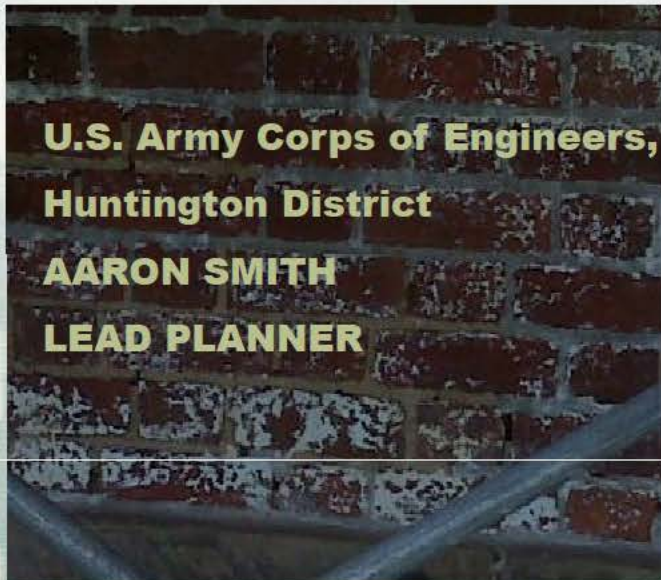


ARCHEOLOGY AT THE JENKINS HOUSE GREEN BOTTOM, WEST VIRGINIA



JENKINS
PLANTATION
MUSEUM
FOR
U.S. ARMY
CORPS OF
ENGINEERS
GREEN BOTTOM
WEST VIRGINIA

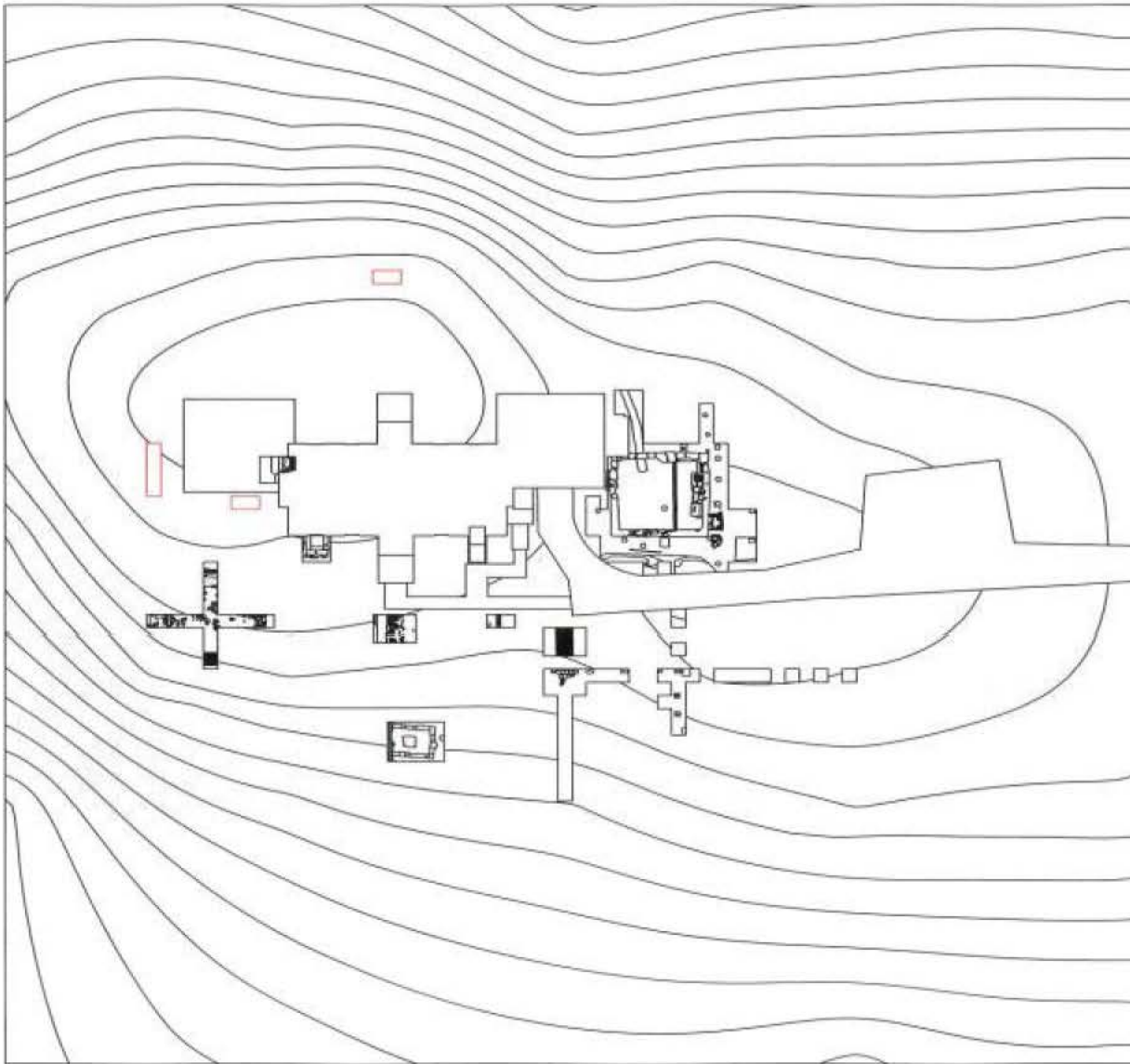
Edward Tucker
ARCHITECTS, INC.
1000 10th Street, Suite 200
Huntington, WV 25701
304.538.1234

1 BASEMENT PLAN
3/16"=1'-0"



US Army Corps of Engineers
BUILDING STRONG

CORPS SPONSORED ARCHEOLOGY



- Sponsored Extensive Excavations Surrounding the Jenkins House
 - ▶ Detect presence, integrity, and age of former outbuildings at Jenkins House.



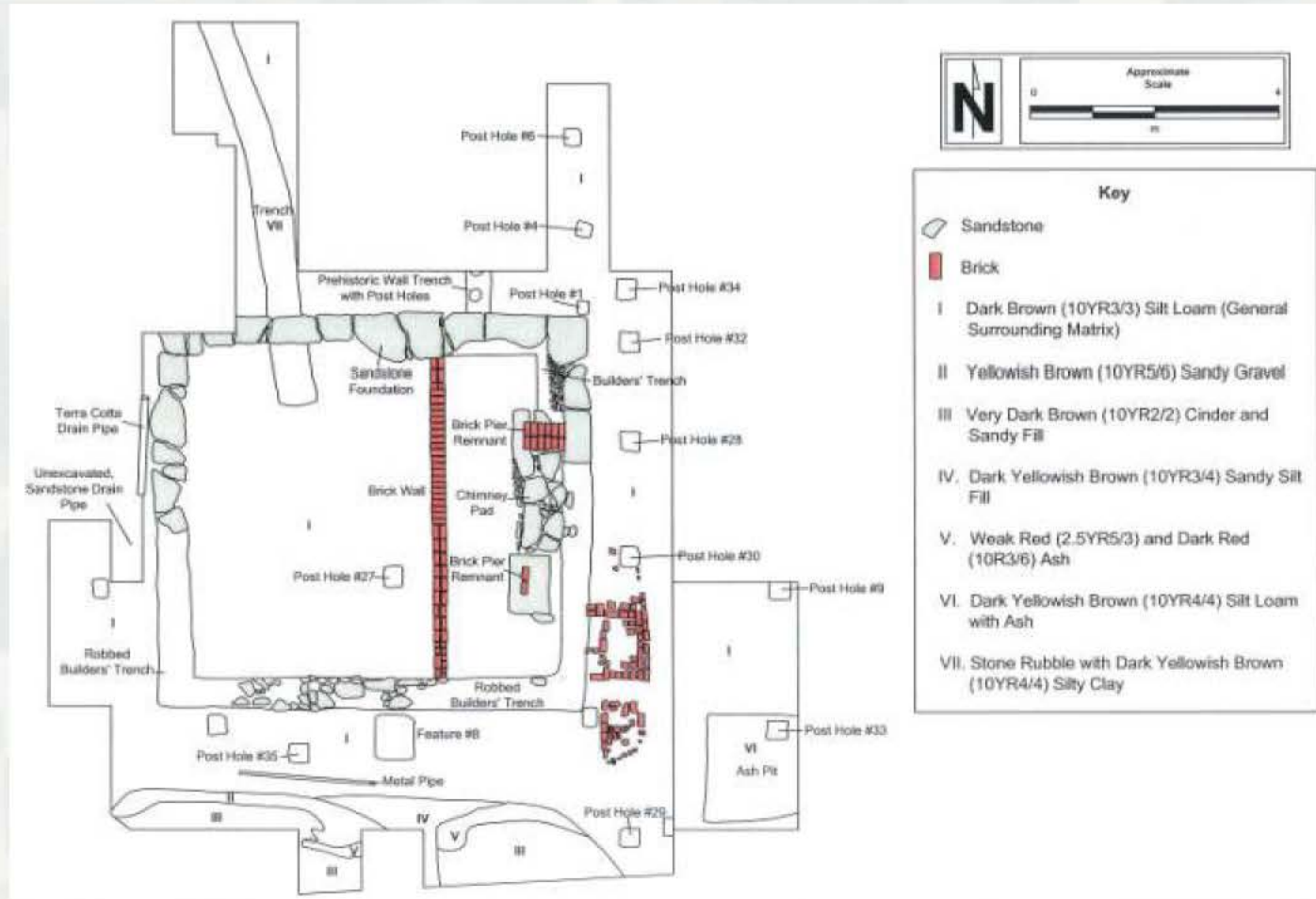
RESULTS OF ARCHEOLOGY

- DETECTED EVIDENCE FOR SEVERAL OUTBUILDINGS



DETACHED KITCHEN

- ADJACENT TO EAST-SIDE OF HOUSE



DETACHED KITCHEN



- Kitchen
Hearth -
Located
furthest
from
house.

Original
cooking
source



DETACHED KITCHEN

- Interior Brick Wall



Remodeling of Kitchen to have Cast-Iron Stove and replacement of Hearth

Help disparity in height between wood floors and previous location of hearth



DETACHED KITCHEN



- Brick
Porch –
Exterior
End
Entrance
Close to
Hearth



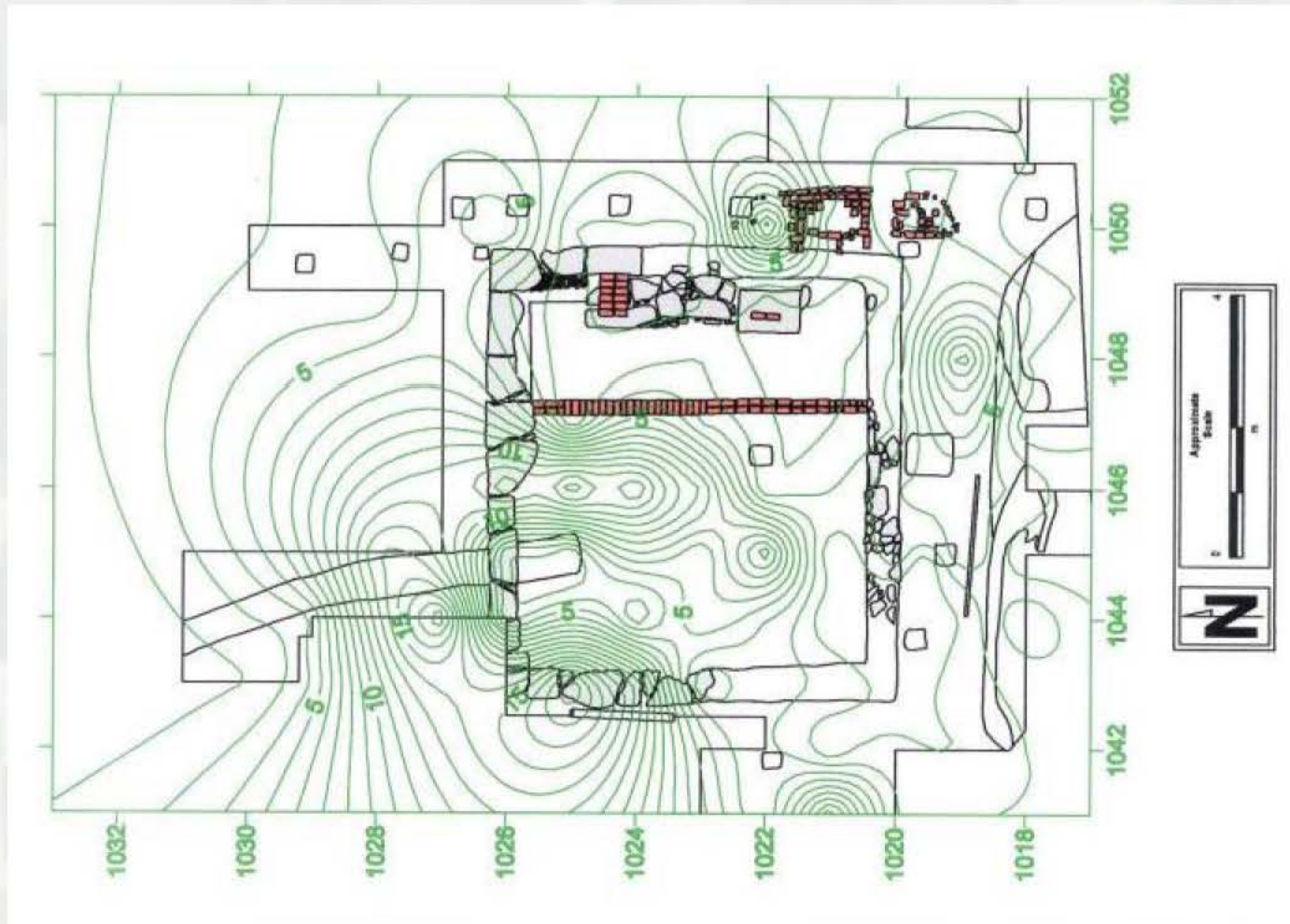
DETACHED KITCHEN

- Scaffolding posthole with cow skull



DETACHED KITCHEN

- How Archeology Helps Clues to its original Design

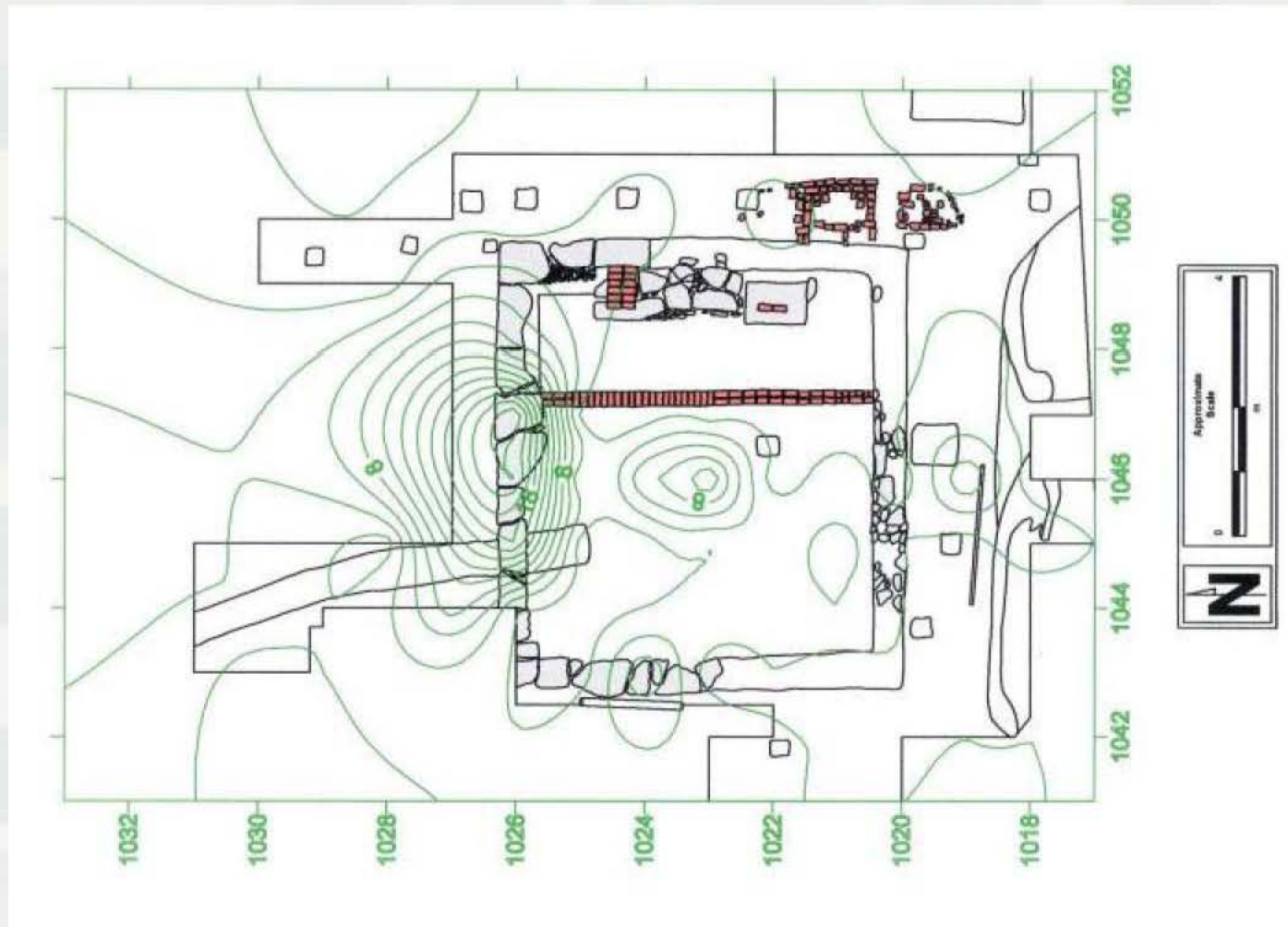


Distribution of Window Glass dating from 1822.



DETACHED KITCHEN

- How Archeology Helps Clues to its original Design

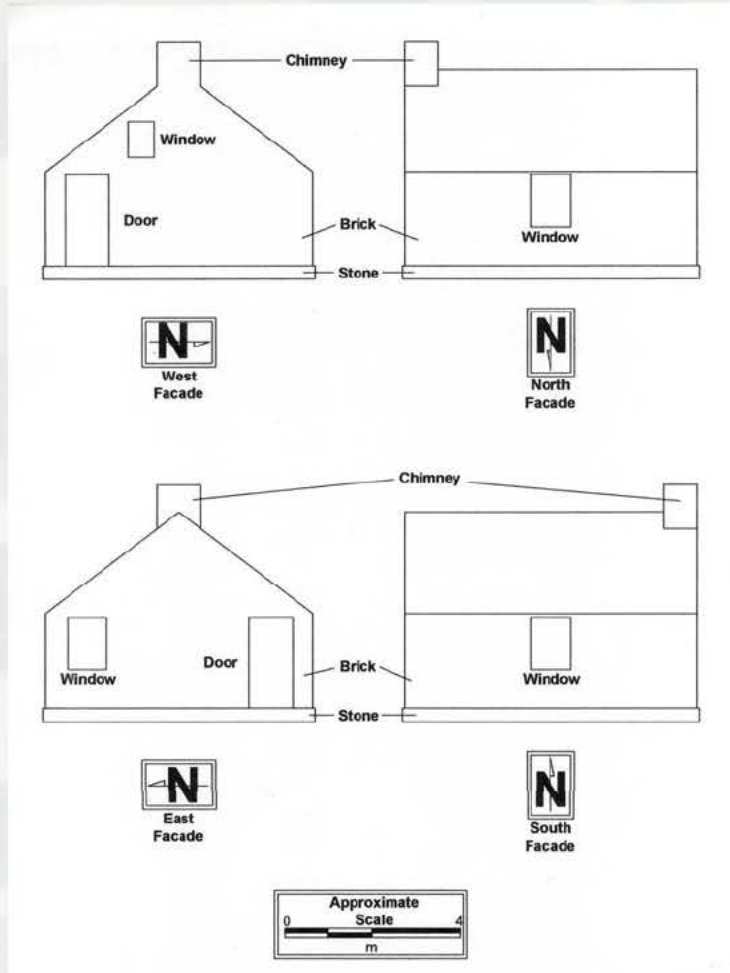


Distribution
of Window
Glass dating
from 1856



DETACHED KITCHEN

- Conjectural Designs based on distribution of Window glass and door hardware



CELLAR FEATURE



REAR WALKWAY



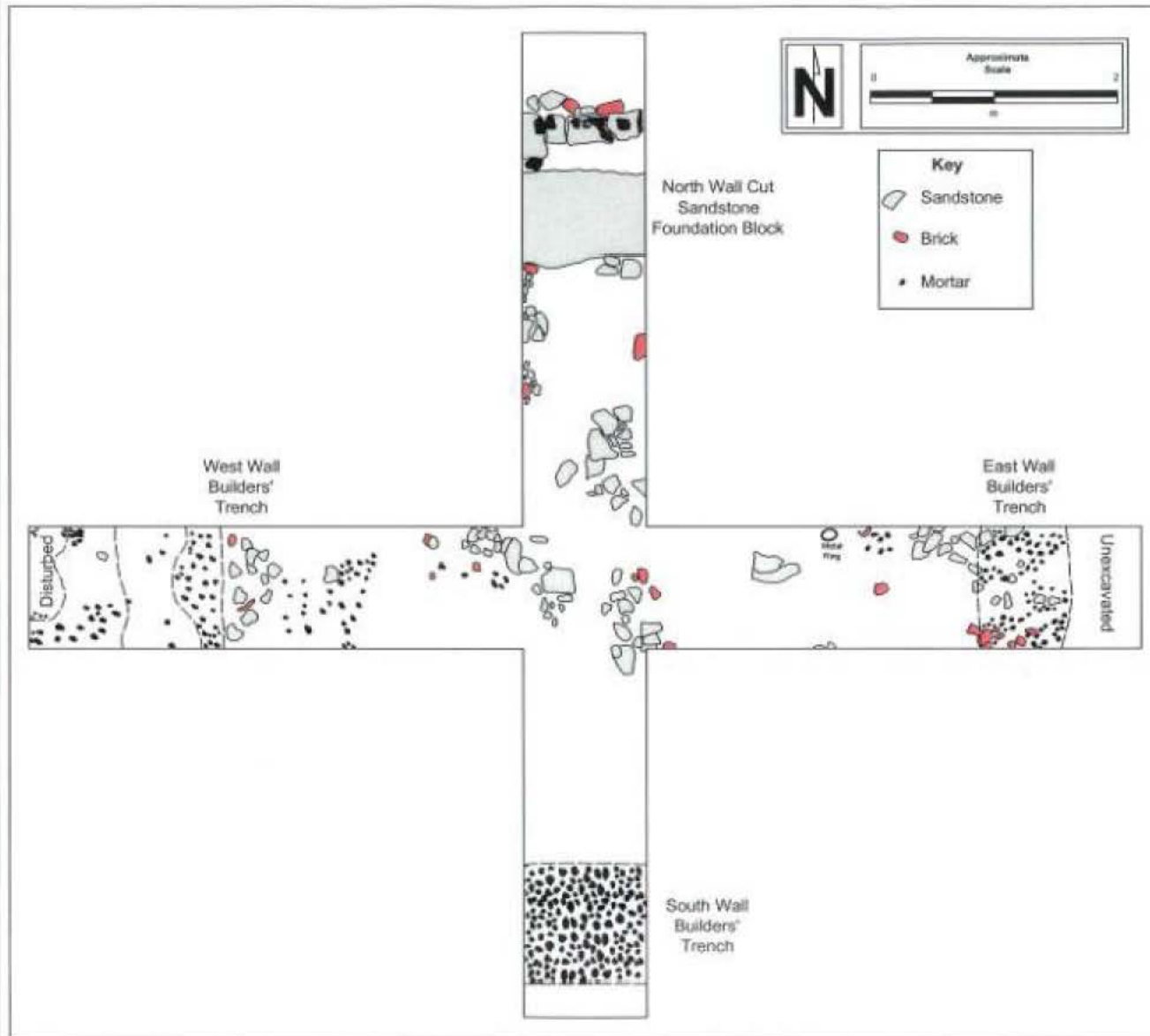
PRIVY



ADJACENT GARDEN



POSSIBLE OFFICE?



Asymmetrical
Placement



POSSIBLE OFFICE?



WHAT HAPPENED TO FOUNDATION
STONES?



FORMER BASEMENT ENTRANCES

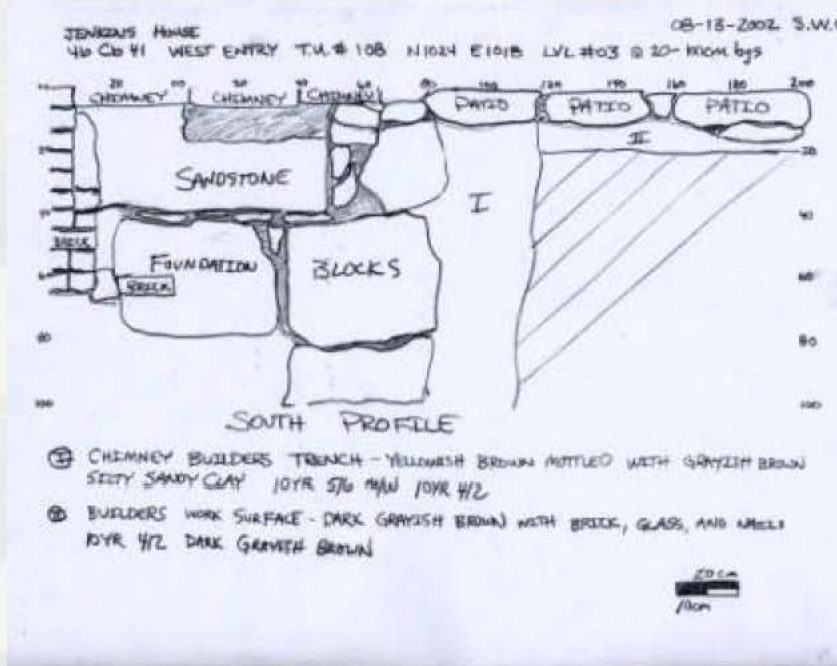


Figure 5.47: Photograph of west entry profile, looking north.



VARIETY OF TABLEWARE



Edge Decorated Ironstone ~
~1840-1860

What happened to broken sets?

Hand-Painted Ironstone
~1840-1870



DECORATED AND PLAIN



Sponge decorated Ironstone
1850-1865

Plain Ironstone Cup
1840-present



EVERYDAY AND NOT SO EVERYDAY WARE



Decal
Decorated
Ironstone
1901-1950

1855 Gilded Porcelain with
Molding



Silver Plated
and Iron
Spoons



UTILITARIAN WARES AND



Salt Glaze with Albany Slip
Stoneware ~1830-1925



Salt Glazed Stoneware
~1830-1925

LEFT- OVERS



Annular Yellowware ~1830-1940



Steak
&
Ham



OTHER ITEMS



Blow in mold liquor flask



Pin and children's rings



Twentieth
Century
Toys



FOR FURTHER INFORMATION

For further information, please contact
Attention: JENKINS HOUSE
U.S. Army Corps of Engineers, Huntington
District
502 Eighth Street
Huntington, West Virginia 25701
Voice: 304-399-5545



BUILDING STRONG®