

Toxins from *Amanita Phalloides* Mushrooms by LC-HRMS

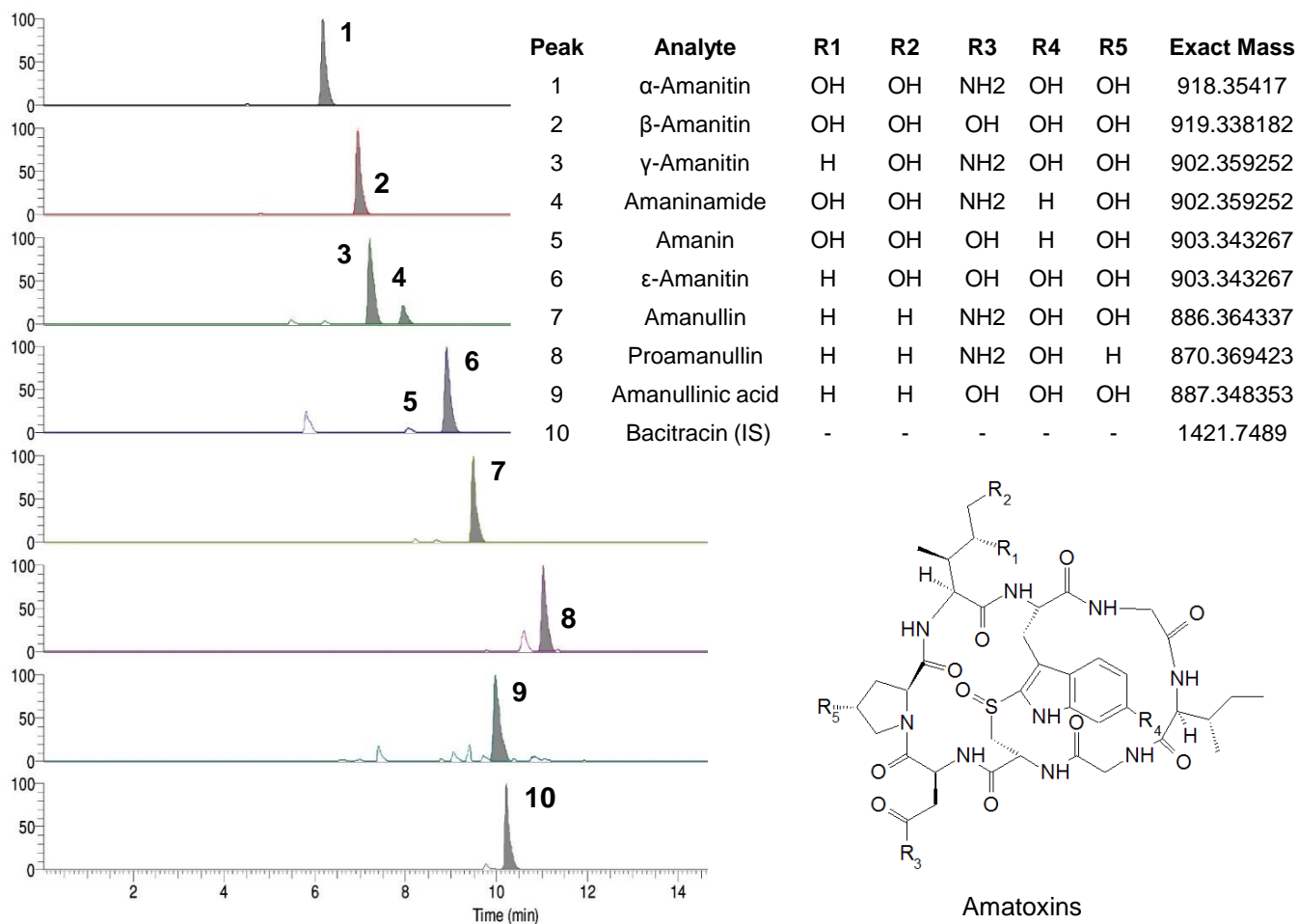
Application #AN4060

Conditions

Column: ACE 3 AQ
Dimensions: 150 x 3.0 mm
Part Number: ACE-116-1503
Mobile Phase: A: 0.1% formic acid in H₂O
B: 0.1% formic acid in MeOH

Time (mins)	%B
0	15
17	100
22	100
22	15
30	15

Flow Rate: 0.4 mL/min
Injection: 10 µL
Temperature: 50 °C
Detection: Thermo Exactive MS
ESI in positive ion mode



Reproduced with permission of Fera Science Ltd, York, UK

© 2015 ACT Ltd. All rights reserved. All products are available worldwide.

For more information contact your local ACE distributor or visit
www.ace-hplc.com or email: info@ace-hplc.com