

Ventura County Lichens: Annotated Checklist

By David L. Magney

This is an annotated checklist of all lichens and lichenizing fungi known to occur in Ventura County, California. The checklist is arranged alphabetically by scientific name. It is updated periodically. At present, there are 137 lichen taxa known to occur in Ventura County, supported by one or more voucher specimens. Another 42 species recorded from areas adjacent to the county, listed at the end of the checklist, are likely to also occur in Ventura County. The lichens are listed alphabetically by scientific name. Herbarium designations (abbreviations) are according to the Index Herbariorum¹.

Acarospora glebosa S. Almquist

VENTURA CO.: Upper Sespe Creek, Sespe Gorge (*C. Bratt 5034 SBBG*).

Acarospora schleicheri (Ach.) A. Massal.

VENTURA CO.: slope above State Route 23 near Lake Eleanor Dam, Conejo Open Space, 34°8'12"N, 118°51'8"W, 297m (*K. Knudsen & J. Kocourková 10706 UCR*).

Acarospora socialis H. Magn.

VENTURA CO.: Topatopa Mountains, Sisar Canyon (*M. Cole 1235 SBBG*).

Acarospora thelococcoides (Nyl.) Zahlbr.

VENTURA CO.: on thin soil over outcrops or rocky terrain along the Los Robles Trail, Conejo Mountain Recreation Area (*Riefner 92-111 WIS*).

Restricted to southern California (Fink 1935), and now apparently very rare due to urbanization. Identified by J.W. Thomson and compared with the isotype of *A. pleiospora* Nyl. (a synonym of *A. thelococcoides*; J.W. Thomson, pers. comm.). The spores are many per ascus and spherical, ca. 12 µm in diameter.

Acarospora xanthoparmeliarum Etayo

VENTURA CO.: on *Xanthoparmelia mexicana* on slope above SR23 near Lake Eleanor Dam, Conejo Open Space, 34°6'12"N, 118°51'7"W, 291 m (*J. Kocourková & K. Knudsen PRM 915480*).

Arthonia beccariana (Bagl.) Stizenb. [*Arthothelium pruinasces* Zahlbr.]

VENTURA CO.: Hidden Valley, on *Quercus agrifolia* on Ash property at 1430 Hidden Valley Rd., 34°6'31"N, 118°55'10"W, 355 m (*K. Knudsen 9621 UCR*).

Arthonia pinastri Anzi

VENTURA CO.: on *Coreopsis gigantea* on hillside above Pacific Coast Highway, W of Yerba Buena Road, 34°3'24"N, 118°58'5"W, 14 m, *K. Knudsen 11156 (UCR)*; N slope of Conejo Mountain, 34°11'21"N, 119°1'1"W, 99 m (*J.C. Lendemer & K. Knudsen 11444 NY, UCR*).

Arthonia tetramera Stizenb. Ex Hasse

VENTURA CO.: on *Quercus agrifolia* on Ash property at 1430 Hidden Valley Rd., Hidden Valley, 34°8'30"N, 118°55'6"W, 362 m (*K. Knudsen 9635 UCR*). California endemic also known from Santa Catalina Island (Type Locality) and Point Lobos State Reserve on *Pinus*.

¹ Herbarium abbreviations: SBBG = Santa Barbara Botanic Garden; UCR = University of California, Riverside; WIS = University of Wisconsin, Madison; PRM = National Museum of the Czech Republic, Praha; ASU = Arizona State University, Tempe; UCSB = University of California, Santa Barbara; COLO = University of Colorado Museum, Boulder; US = Smithsonian Institution, Washington DC; SFSU = San Francisco State University.

Ventura County Lichens: Annotated Checklist

By David L. Magney

Arthonia xanthoparmeliarum Etayo

VENTURA CO.: on *Xanthoparmelia mexicana* on slope above SR23 near Lake Eleanor Dam, Conejo Open Space, 34°6'12"N, 118°51'7"W, 291 m (J. Kocourková & K. Knudsen PRM 915480).

Arthopyrenia lyrata R. Harris

VENTURA CO.: Ojai Valley, Lake Casitas (S.C. Tucker 32265 SBBG).

Aspicilia cuprea Owe-Larss. & A. Nordin

VENTURA CO.: Upper Sespe Creek, SR33 N of Potrero John Creek (C. Bratt 5037, 5042 SBBG).

Aspicilia farnosa Owe-Larss. & A. Nordin

VENTURA CO.: Dry Lakes Ridge, Wheeler Springs (Unknown 2, 3 SBBG).

Buellia punctata (Scop.) A. Massal. [*Amandinea punctata* (Hoffm.) Coppins & Scheid., *Buellia myriocarpa*, *Buellia pullata*] - Buelliaceae

VENTURA CO.: Pine Mountain, summit along SR33 on *Pseudotsuga macrocarpa* (D.E. Baltzo 1319 ICH); Ojai Valley, Lake Casitas (S.C. Tucker 32266, 32276 SBBG).

Buellia triseptata

VENTURA CO.: on *Adenostoma fasciculatum* on Topatopa Mountains, Sisar Canyon (C. Bratt 1047 SBBG).

Caloplaca arenaria (Pers.) Mull. Arg.

VENTURA CO.: Upper Sespe Creek, SR33 N of Potrero John Creek (C. Bratt 5037 SBBG).

Caloplaca chrysophthalma Degel.

VENTURA CO.: on bark of *Quercus lobata*, Conejo Mountain Recreation Area (Riefner 92-101 WIS).

This inconspicuous taxon has been reported in California only from the San Francisco Bay region (Baltzo 1970). The Ventura Co. collection has fine soredia and a thin, almost invisible thallus that most closely matches typical European material rather than *C. cf. chrysophthalma* as collected and discussed by Weber et al. (1987), which may be an undescribed species.

Caloplaca impolita Arup

VENTURA CO.: Upper Sespe Creek, SR33 N of Potrero John Creek (C. Bratt 5040a SBBG); Topatopa Mountains, Sisar Canyon Rd (M. Cole 1233 SBBG).

Caloplaca luteominia var. *bolanderi* (Tuck.) Arup

VENTURA CO.: Sespe Gorge (Hamber 5 ASU).

Caloplaca luteominia var. *luteominia* (Tuck.) Zahlbr.

VENTURA CO.: Upper Sespe Creek, Sespe Gorge (C. Bratt 5030 SBBG).

Caloplaca persimilis Wetm.

VENTURA CO.: on *Quercus agrifolia* on Ash property at 1430 Hidden Valley Rd., Hidden Valley, 34°8'30"N, 118°55'6"W, 362 m, K. Knudsen 9660 (UCR).

Caloplaca squamosa (de Lesd.) Zahlbr.

VENTURA CO.: Upper Ojai Valley at Dennison Park (C. Bratt 1202 ASU/SBBG).

Caloplaca stanfordensis H. Magn.

VENTURA CO.: Hidden Valley, on *Quercus agrifolia* on Ash property at 1430 Hidden Valley Rd., 34°8'30"N, 118°55'6"W, 362 m (K. Knudsen 9661 UCR).

Ventura County Lichens: Annotated Checklist

By David L. Magney

Caloplaca subpyracella (Nyl.) Zahlbr.

SAN DIEGO CO.: Point Loma, on sandstone and sandy soil in maritime scrub and on outcrops above the high-tide limit (*Riefner 91-20* WIS). VENTURA CO.: Conejo Mountains, on soil, pebbles, and *Selaginella* (*Riefner 92-110* WIS); Santa Monica Mountains, Point Mugu on rocks from near the spray zone to sandy soil in coastal sage scrub (*Riefner 92-133*).

Another species not well-documented in the literature and poorly known with respect to distribution and ecology. It has been considered an inland species of the southern California foothills (Fink 1935, Tucker and Jordan 1978). Although our collections do not extend the known range of the species, they do broaden its ecological tolerance to include the maritime belt of California. *Caloplaca subpyracella* was not included among the littoral species of the genus occurring in North America by Arup (1995b). It is distinguished by 20 x 7 µm spores that have a very narrow septum (J.W. Thomson, pers. comm.)

Caloplaca subsoluta (Nyl.) Zahlbr.

VENTURA CO.: Topatopa Mountains, Sisar Canyon (*M. Cole 1247* SBBG).

Candelaria concolor (Dicks.) B. Stein



VENTURA CO.: on *Adenostoma fasciculatum* on Topatopa Mountains, Sisar Canyon (*C. Bratt 1061* SBBG); Upper Ojai Valley, Dennison Park (*C. Bratt 1151* SBBG).



Candelaria pacifica Westberg in ed

VENTURA CO.: Upper Ojai Valley, Dennison Park (*I. Tavares 550d* ASU; *C. Bratt 1150, 1152, 1173, 1184* SBBG). *Photo to right.*

Candelariella aurella (Hoffm.) Zahlbr.

VENTURA CO.: Upper Sespe Creek, Sespe Gorge (*C. Bratt 5031* SBBG).

Candelariella rosulans (Mull. Arg.) Zahlbr.

VENTURA CO.: Upper Sespe Creek, SR33 N of Derrydale Creek (*C. Bratt 4119* SBBG); Topatopa Mountains, Sisar Canyon (*M. Cole 1233* SBBG). LOS ANGELES CO.: Santa Monica Mountains, Topanga Canyon (*C.M. Wetmore 16823* BRY).

Candelariella vitellina (Hoffm.) Mull. Arg.

VENTURA CO.: Upper Ojai Valley, Dennison Park (*C. Bratt 1200* SBBG).

Cercidospora caudata Kernst.

VENTURA CO.: Santa Monica Mountains, on *Caloplaca squamosa* and *C. subsoluta* on slope above SR23 near Lake Eleanor Dam, Conejo Open Space, 34°6'12"N, 118°51'8"W, 297 m (*J. Kocourková & K. Knudsen 7347* hb. Kocourková).

Ventura County Lichens: Annotated Checklist

By David L. Magney

Cercidospora macrospora (Uloth) Hafellner & Nav.-Ros.

VENTURA CO.: Santa Monica Mountains, on *Lecanora muralis* on slope above SR23 near Lake Eleanor Dam, Conejo Open Space, 34°8'12"N, 118°51'8"W, 297 m (*J. Kocourková & K. Knudsen 7349* hb. Kocourková). Common in Southern California.

Chrysothrix xanthina (Vainio) Kalb - Chrysothricaceae

VENTURA CO.: Santa Monica Mountains, Sycamore Canyon, Point Mugu State Park, Ranch Center Trail, 34.1358333°N, 118.9994444°W, 191 m, on bark of *Quercus agrifolia* (*K. Knudsen 11228* FH). LOS ANGELES CO.: Santa Monica Mountains, Malibu Creek State Park,

Malibu Creek on *Salix lasiolepis*, 248 m (*K. Knudsen 11190* FH, UCR); Upper Santa Ynez Canyon, along trail to waterfall, 34.08555556°N, 118.56888889°W, 215 m (*K. Knudsen 11794* UCR, FH); Rustic Canyon at 134 m (*K. Knudsen 12063* FH, UCR).

SANTA BARBARA CO.: Santa Ynez Valley, Sedgwick Ranch Reserve, N end of Brinkerhoff Rd, 34.689667°N, 120.042667°W, 367 m (*S. Tucker 39201* WIS).

SAN LUIS OBISPO CO.: Cambria, along SR 1 S of Santa Rosa Cr., 35.55888889°N, 121.0936111°W, 26 m (*K. Knudsen 12190* FH, UCR). Texas, Oklahoma, Kansas, Missouri, Arkansas, Louisiana, Mississippi, Alabama, Kentucky, Ohio, Michigan, Florida, Georgia, South Carolina, North Carolina, Virginia, West Virginia, Maryland, Pennsylvania, New York, Massachusetts, Vermont, Maine; Ontario, Canada; Pandora, Costa Rica.

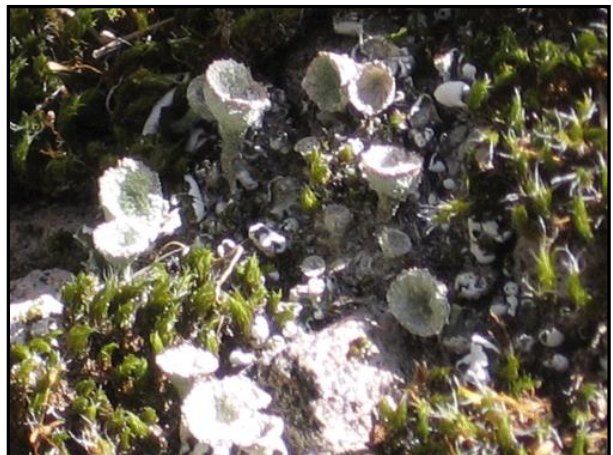


Cladonia chlorophaea (Florke ex Sommerf.) Sprengel

VENTURA CO.: Upper Ojai Valley, Dennison Park (*C. Bratt 1160, 1161* SBBG); Santa Monica Mountains, near Lake Eleanor Dam, Conejo Open Space, slope above SR 23 South, 34°8'12"N, 118°51'8"W, 297 m; West Anacapa Island, Channel Islands National Park, ridge east of Summit Peak, 34°0'44"N, 119°25'42"W, 270 m.

Cladonia nashii Ahti

Cladonia nashii Ahti (Cladoniaceae family) is a foliose lichen with squamules 1-4 mm wide. The fruiting bodies, podetia, are 4-10 mm tall, whitish-gray, simple, and cup-forming with cups 2-4 mm wide. It typically grows on earthen banks (terricolous) mostly in shaded habitats. *Cladonia nashii* is endemic to the California Floristic Province, ranging from Monterey County south along the coast to Baja California del Norte, Mexico.



Ventura County Lichens: Annotated Checklist

By David L. Magney

(Nash et al. 2002.)

Cladonia nashii is rare throughout its range, with only two known occurrences in the Santa Monica Mountains (one of which is in Ventura County on the Ash property). NatureServe has assigned a G1G3 global rarity ranking for this species (Critically Imperiled to Vulnerable globally). It was found onsite on somewhat mesic soil in *Quercus agrifolia* Alliance habitat on the southern portion of Parcel 2. Suitable habitat is present elsewhere in the region for this species.

VENTURA CO.: Santa Monica Mountains, soil in shade of *Quercus agrifolia* Alliance on north slope of Boney Mountain; Hidden Valley, on Charles Ash's property at 1430 Hidden Valley Road (D.L. Magney 166-08 UCSB).

Cliostomum griffithii (Sm.) Coppins

VENTURA CO.: Santa Monica Mountains, on *Malacothamnus fasciculatum* in Sycamore Canyon, Point Mugu State Park, 34°8'10"N, 119°0'15"W, 213 m (K. Knudsen & T. Sagar 11120 UCR).

Collema nigrescens (Hudson) DC.

VENTURA CO.: Hidden Valley, on *Quercus agrifolia* on Ash property at 1430 Hidden Valley Rd., 34°8'30"N, 118°55'6"W, 362 m (K. Knudsen 9630 UCR).

Dactylospora pleiosperma Triebel

VENTURA CO.: Santa Monica Mountains, on *Lecanora caesiorubella* on *Quercus agrifolia* in Wood Canyon, Point Mugu State Park, 34°7'38"N, 119°0'51"W, 383 m (J. Kocourková & K. Knudsen PRM 915667). SAN LUIS OBISPO CO: Los Osos (K. Knudsen & J. Kocourková 9928 UCR)

Dimelaena californica (H. Magn.) Sheard

VENTURA CO.: Upper Sespe Creek, SR33 N of Potrero John Creek (C. Bratt 5041 SBBG).

Dimelaena thysanota (Tucker) Hale & W.L. Culb.

VENTURA CO.: Hidden Valley, on Conejo Volcanics rock outcrop on Ash property at 1430 Hidden Valley Rd., 34°8'30"N, 118°55'6"W, 362 m (K. Knudsen 9646 UCR). Typically at higher elevations.

Dimelaena weberi Sheard

VENTURA CO.: Conejo Mountains, on Conejo Volcanics on N slope of Conejo Mountain, 34°11'33"N, 119°0'8"W, 63 m (K. Knudsen 5143.1 & 5143.2 UCR).

Diploschistes scruposus (Schreb.) Norman

VENTURA CO.: Upper Ojai Valley, Dennison Park (C. Bratt 1164 SBBG).

Dirinaria picta (Swartz) Clem. & Shear.

SONOMA CO.: Outer North Coast Ranges, on rocks along SR1 near Fort Ross, (Riefner 88-78 WIS & 85-639 COLO). SAN LUIS OBISPO CO.: Camarillo Peaks, on soil in coastal sage scrub at Morro Bay State Park (Riefner 92-408 WIS). VENTURA CO.: Santa Monica Mountains, on soil and rocks in scrub along Potrero Rd. (Riefner 92-190 WIS).

Endococcus matzeri D. Hawks. & Iturr.

VENTURA CO.: Santa Monica Mountains, on *Mobergia angelica* in deep-cut ravine in slope above SR 23 near Lake Eleanor Dam, Conejo Open Space, 34°8'12"N, 118°51'8"W, 297 m (K. Knudsen et al. 10967 UCR). SANTA BARBARA CO.: Santa Rosa Island near Cherry Canyon. Baja California, Mexico.

Ventura County Lichens: Annotated Checklist

By David L. Magney

Flavoparmelia baltimorensis (Gyelnik & Foriss) Hale

VENTURA CO.: Upper Ojai Valley, Dennison Park (C. Bratt 1172 SBBG)

Flavoparmelia caperata (L.) Hale

VENTURA CO.: Upper Ojai Valley,
Dennison Park (C. Bratt 1145, 1146 SBBG);
Sulphur Mountain, Wheeler Canyon on
UNOCAL property (C. Bratt 11298 SBBG)



Flavopunctelia flaventior (Stirton) Hale

VENTURA CO.: Upper Ojai Valley,
Dennison Park (C. Bratt 1147, 1171, 1192
SBBG).



Hypogymnia gracilis McCune

VENTURA CO.: Topatopa Mountains, on *Adenostoma fasciculatum* at head of Wilsie
Canyon (C. Bratt 1058 SBBG).

Hypogymnia imshaugii Krog

VENTURA CO.: Topatopa Mountains, on
Adenostoma fasciculatum at head of Wilsie
Canyon (C. Bratt 1059 SBBG).



Hyperphyscia adglutinata (Florke) H. Mayrth. & Poelt

VENTURA CO.: Ojai Valley, Lake Casitas (S.C. Tucker 32272 SBBG).

Kaemefeltia merrillii (DuRietz) Thell & Goward

VENTURA CO.: Topatopa Mountains, Sisar
Canyon on *Adenostoma fasciculatum* (C. Bratt
1055 SBBG).



Ventura County Lichens: Annotated Checklist

By David L. Magney

Lecania naegelii (Hepp) Diederich & van den Boom

VENTURA CO.: Santa Monica Mountains, on *Malacothamnus fasciculatus* in Sycamore Canyon, Point Mugu State Park, 34°8'10"N, 119°0'15"W, 213 m (K. Knudsen & T. Sagar 11125 UCR).

Lecanora argopholis (Ach.) Ach.

VENTURA CO.: Upper Ojai Valley, Dennison Park (C. Bratt 1196 SBBG).

Lecanora confusa Almb.

VENTURA CO.: Ojai Valley, on *Baccharis pilularis* ssp. *consanguinea* at Lake Casitas (S. Tucker 32269, 32271 ASU/SBBG); Santa Monica Mountains, on *Malosma laurina* in Wood Canyon, Point Mugu State Park, Ranch Center Road on Hidden Pond Trail near water tank on ridge between Wood and Sycamore Canyons, 34°8'2"N, 119°0'37"W, 212 m (K. Knudsen et al. 11549 UCR). Often on bark of *Malosma laurina*.

Lecanora expallens Nyl.

VENTURA CO.: Upper Ojai Valley, Dennison Park (C. Bratt 1190 SBBG).

Lecanora inpudens Degel.

VENTURA CO.: Santa Monica Mountains, on *Malacothamnus fasciculatum* in upper La Jolla Valley, Point Mugu State Park, 34°6'37"N, 119°01'46"W, 270 m (K. Knudsen et al. 11573 UCR). First California record.

Lecanora mellea W. Weber

VENTURA CO.: Upper Sespe Creek, Sespe Gorge (C. Bratt 5033 SBBG).

Lecanora muralis (Schreber) Rabenh.

VENTURA CO.: Dry Lakes Ridge, Wheeler Springs (Unknown 5 SBBG).

Lecanora pacifica Tuck.

VENTURA CO.: Sulphur Mountain, Wheeler Canyon on UNOCAL property (C. Bratt 11297, 11306 SBBG).

Lecanora varia (Hoffm.) Ach.

VENTURA CO.: Upper Ojai Valley, Dennison Park (C. Bratt 1188, 1189 SBBG).



Lecidea fuscoatrina Hertel & Leuckert

VENTURA CO.: Santa Monica Mountains, on Conejo Volcanics on slope above State Route 23 near Lake Eleanor Dam, Conejo Open Space, 34°8'12"N, 118°51'8"W, 297 m (K. Knudsen et al. 10704 UCR). Usually at higher elevations in southern California.

Lepraria chlorina (Ach.) Ach.

VENTURA CO.: Upper Ojai Valley, Dennison Park (C. Bratt 1195 SBBG).

Leptochidium albociliatum (Desmaz.) M. Choisy

VENTURA CO.: Santa Monica Mountains, on Conejo Volcanics on slope above SR23 near Lake Eleanor Dam, Conejo Open Space, 34°8'12"N, 118°51'8"W, 297 m (K. Knudsen et al. 10701 UCR). Common in Southern California but rare in the Santa Monica Mountains.

Ventura County Lichens: Annotated Checklist

By David L. Magney

Leptogium californicum Tucker

VENTURA CO.: Santa Monica Mountains, on soil over Conejo Volcanics on slope above SR23 near Lake Eleanor Dam, Conejo Open Space, 34°8'12"N, 118°51'8"W, 297 m (*K. Knudsen et al. 10702* (UCR)). Common in Southern California but rare in the Santa Monica Mountains.

Letharia vulpina (L.) Hue

VENTURA CO.: Frazier Mountain, above TXI mine; Pine Mountain Ridge, Reyes Peak; Topatopa Mountains, Sisar Canyon on *Adenostoma fasciculatum* on (*C. Bratt 1050, 1051, 1052* SBBG).



Lichenella stipatula Nyl.

VENTURA CO.: Upper Sespe Creek, SR33 N of Derrydale Creek (*C. Bratt 4122* SBBG).

Lichenocodium xanthoriae M.S. Christ.

VENTURA CO.: Santa Monica Mountains, on *Xanthomendoza fulva* in Wood Canyon, Point Mugu State Park, 34°7'38"N, 119°0'51"W, 383 m (*J. Kocourková et al. sn 13-Aug-2009* UCR). RIVERSIDE CO.: Santa Ana Mountains, Santa Rosa Plateau near Clinton Keith Road.

Lichenostigma cosmopolites Hafellner & Calat.

VENTURA CO.: Santa Monica Mountains, on *Xanthoparmelia* above Little Sycamore Canyon Road, Santa Monica Mountains, 34°6'44"N, 118°54'59"W, 671 m (*K. Knudsen & R. Muerter 7155* UCR). Common in Southern California but rare in the Santa Monica Mountains.

Melanelia glabra (Schaerer) Essl.

VENTURA CO.: Upper Sespe Creek, SR33 N of Derrydale Creek (*C. Bratt 4126* SBBG); Topatopa Mountains, Sisar Canyon on *Adenostoma fasciculatum* on (*C. Bratt 1056, 1057* SBBG).

Melanelia subolivacea (Nyl.) Essl.

VENTURA CO.: Upper Sespe Creek, SR33 N of Derrydale Creek (*C. Bratt 4127* SBBG).

Niebla cephalota (Tuck.) Rundel & Bowler [*Vermilacinia cephalota* (Tuck.) Spjut & Hale] - Ramalinaceae

VENTURA CO.: Anacapa Islands, West Anacapa Island at campground ¼ mi E to 2nd draw, 355 ft (*C. Bratt 9185* SBBG), plateau on W end (*T.H. Nash III 37049-a* ASU); East Anacapa Island, along road to lighthouse (*D.E. Baltzo 7220* ASU); San Nicolas Island, along Wilong Rd W of Barge Landing, 50 m (*T.H. Nash III 38894* ASU). CONTRA COSTA CO.: Briones Reservoir. DEL NORTE CO.: Lagoon Creek; Clifford Kamph Memorial State Park. HUMBOLDT CO.: Samoa Peninsula; Patricks Point State Park. LOS ANGELES CO.: Santa Catalina



Ventura County Lichens: Annotated Checklist

By David L. Magney

Island. MARIN CO.: Point Reyes; S of Stinson Beach. MENDOCINO CO.: Point Arena; Jug Handle Creek. MONTEREY CO.: Big Sur, Seal Point; Monterey Peninsula, Point Lobos, Bird Rock Trail. RIVERSIDE CO.: Santa Ana Mountains. SAN DIEGO CO.: Santa Ana Mountains, Fallbrook. SAN FRANCISCO CO.: Golden Gate Park. SAN LUIS OBISPO CO.: Morro Bay, Cambria. SAN MATEO CO.: S of Año Nuevo State Reserve. SANTA BARBARA CO.: San Miguel Island; Santa Rosa Island; Santa Cruz Island; Santa Barbara Island. OREGON. BAJA CALIFORNIA NORTE, BAJA CALIFORNIA SUR.

Niebla ceruchis Rundel & Bowler

VENTURA CO.: Conejo Mountains, Conejo Mountain along Ventura Blvd 4 mi N of Newbury Park (W.A. Weber 1727 BRY).

Niebla homalea (Ach.) Rundel & Bowler

VENTURA CO.: Anacapa Islands, Middle Anacapa Island, The Slot (A. Loeblich sl-7161 BRY).

Parmelina coleae Arguello

VENTURA CO.: Topatopa Mountains, Sisar Canyon on *Adenostoma fasciculatum* (C. Bratt 1053 SBBG).

Parmelina quercina (Willd.) Hale

VENTURA CO.: Topatopa Mountains, Sisar Canyon on *Adenostoma fasciculatum* (C. Bratt 1054 SBBG).

Peltigera rufescens (Weiss) Humb.

VENTURA CO.: Santa Monica Mountains, on slope above State Route 23 near Lake Eleanor Dam, Conejo Open Space, 34°8'12"N, 118°51'8"W, 297 m (K. Knudsen et al. 10705 UCR). Rare in the Santa Monica Mountains.

Peltula euploca (Ach.) Poelt

VENTURA CO.: Dry Lakes Ridge, Wheeler Springs (Unkown 4 SBBG).

Peltula obscurans var. *deserticola* (Zahlbr.) Wetmore

VENTURA CO.: Sulphur Mountain, above Salt Marsh Canyon on UNOCAL property (C. Bratt 11310 SBBG).

Peltula omphaliza (Nyl. Ex Eckf.) Wetmore

VENTURA CO.: Santa Monica Mountains, on Conejo Volcanics at Party Rock, Santa Monica Mountains, 34°6'37"N, 118°54'22"W, 698 m (K. Knudsen et al. 5152.3 UCR). LOS ANGELES CO.: Hepatic Gulch, off Schueren Road, Saddle Peak area, 34°4'43"N, 118°38'54"W, 698 m, on volcanic rock, (K. Knudsen 3042 UCR). Infrequent in the Santa Monica Mountains.

Phaeophyscia kairamoi (Vainio) Moberg

INYO CO.: Death Valley National Monument, on NW-facing cliff, SE side of SR267, elev. 1220 m, Ryan 14888. LOS ANGELES CO.: Santa Catalina Island, on rock at Land's End, elev. 20 m (Ryan 30956). MONTEREY CO.: Arroyo Seco Canyon, on *Quercus*, Arroyo Seco Canyon Campground, Los Padres National Forest, elev. ca. 300 m (Ryan 26888). SANTA BARBARA CO.: Santa Rosa Island, on rock, along pass on main road SE of Black Mountain, elev. 240-320 m (Ryan 31666). SAN LUIS OBISPO CO.: Coon Creek Canyon, on shale in Montaña de Oro State Park (Riefner 87-392 WIS). VENTURA CO.: Santa Monica Mountains, outcrops in coastal sage scrub near Point Mugu (Riefner 92-132 WIS).

Ventura County Lichens: Annotated Checklist

By David L. Magney

Phaeophyscia orbicularis (Necker) Moberg

VENTURA CO.: Upper Ojai Valley, Dennison Park (*C. Bratt 1181* SBBG); Hidden Valley, on *Quercus agrifolia* on Ash property at 1430 Hidden Valley Rd., 34°8'30"N, 118°55'6"W, 362 m (*K. Knudsen 9676* UCR).

Phaeophyscia sciastra (Ach.) Moberg

RIVERSIDE CO.: on granitic boulders and cliffs along stream valley near Pinyon Flats on SR74 (*Riefner 86-63* US). SHASTA CO.: on rock, along Manzanita Creek next to SR44, 1 km W of Lassen Volcanic National Park, elev. 1700 m (*Ryan 11325*).

VENTURA CO.: Nordhoff Ridge, on rock along river canyon at SR33 N of Ojai (*Riefner 87-79*).

Phoma cladonicola Diederich, Kocourk. & Etayo

VENTURA CO.: Santa Monica Mountains, on *Cladonia chlorophaea* on slope above SR23 near Lake Eleanor Dam, Conejo Open Space, 34°8'12"N, 118°51'8"W, 297 m (*K. Knudsen et al. 10705.1* UCR); Anacapa Islands, ridge E of Summit Peak on West Anacapa Island (*K. Knudsen 10869* UCR).

Physcia adscendens (Fr.) H. Oliver

VENTURA CO.: Upper Ojai Valley, Dennison Park (*C. Bratt 1156, 1157, 1174, 1176, 1180, 1182* SBBG); Sulphur Mountain, Wheeler Canyon on UNOCAL property (*C. Bratt 11300, 11305* SBBG).

Physcia biziana (Massal.) Zahlbr.

VENTURA CO.: Sulphur Mountain, Wheeler Canyon on UNOCAL property (*C. Bratt 11301* SBBG).

Physcia stellaris (L.) Nyl.

VENTURA CO.: Topatopa Mountains, Sisar Canyon on *Adenostoma fasciculatum* (*C. Bratt 1048, 1049* SBBG); Upper Ojai Valley, Dennison Park (*C. Bratt 1153, 1154, 1170, 1187* SBBG).

Physcia tenella (Scop.) DC.

VENTURA CO.: Upper Sespe Creek, SR33 N of Derrydale Creek (*C. Bratt 4129* SBBG); Ojai Valley, Lake Casitas (*S.C. Tucker 32267* SBBG).



Physconia enteroxantha (Nyl.) Poelt

VENTURA CO.: Upper Ojai Valley, Dennison Park (*C. Bratt 1168* SBBG); Sulphur Mountain, ridgetop on UNOCAL property (*C. Bratt 11307* SBBG).

Physconia fallax Essl.

VENTURA CO.: Topatopa Mountains, Sisar Canyon on *Adenostoma fasciculatum* (*C. Bratt 1052* SBBG).

Physconia isidigera (Zahlbr.) Essl.

VENTURA CO.: Upper Sespe Creek, SR33 N of Derrydale Creek (*C. Bratt 4123* SBBG); Sulphur Mountain, Wheeler Canyon on UNOCAL property (*C. Bratt 11299* SBBG).

Ventura County Lichens: Annotated Checklist

By David L. Magney

SBBG); Santa Monica Mountains, Lake Eleanor Open Space on *Quercus lobata* (*I. Tavares 543a BRY*).

Placocarpus americanus K. Knudsen, Breuss & Kocourk.

VENTURA CO.: Santa Monica Mountains, on *Lecanora murilis* on Conejo Volcanics on slope above SR23 near Lake Eleanor Dam, Conejo Open Space, 34°8'12"N, 118°51'8"W, 297 m (*K. Knudsen et al. 10711 UCR*). LOS ANGELES CO.: Santa Monica Mountains, Agoura Hills near Kanan-Dume Road 34°08'37"N, 118°46'00"W, 267 m, on *Lecanora muralis*, early stage of infection (*J.C. Lendemer & K. Knudsen 11461 NY, UCR*). California endemic.

Placopyrenium noxium Breuss

Placopyrenium noxium Breuss (Verrucariaceae) is a crustose lichen that is parasitic on other lichens. It is tan in color. *Placopyrenium noxium* has only been collected a total of six times at four locations, and the collection on the Ash property represents the first record for the Santa Monica Mountains and second record for Ventura County. It was found from a medium-sized boulder of Conejo Volcanics in the Wildflower Field of Parcel 3, at the edge of the oak woodland. This species is extremely rare and qualifies to be listed as Endangered.



LOS ANGELES CO.: Santa Monica Mountains. VENTURA CO.: Santa Monica Mountains, on Conejo Volcanics boulder outcrop at edge of the Santa Monica Mountains and Hidden Valley in Wildflower Field, Ventura County on Charles Ash's property at 1430 Hidden Valley Road (*K. Knudsen 9656 UCR*).

Placopyrenium stanfordii (Herre) K. Knudsen [*Placopyrenium zahlbruckneri* (Hasse) Breuss]

VENTURA CO.: Santa Monica Mountains, on Conejo Volcanics on slope above SR23 near Lake Eleanor Dam, Conejo Open Space, 34°8'10"N, 118°51'13"W, 296 m (*K. Knudsen 11241 UCR*). LOS ANGELES CO.: Topanga Canyon.

Protoparmelia badia (Hoffm.) Hafellner

(*Lecanora badia* [Hoffm.] Ach.). EL DORADO CO.: Sierra Nevada, on rock, Lost Lake, Sugar Pine State Park, 6.5 km WSW of Meeks Bay, elev. 2,250 m (*Ryan 23587*).

TULARE CO.: Sierra Nevada, bank of the Kaweah River SW of Sequoia National Park, SR198, elev. 300 m (*Ryan 11285*). VENTURA CO.: Santa Monica Mountains, on outcrops in coastal sage scrub near Pt. Mugu (*Riefner 92-129 WIS*).

Previously reported in California only from the Eastern Brook Lakes Watershed (*Ryan and Nash 1991*).

Psora luridella (Tuck.) Fink

VENTURA CO.: Upper Sespe Creek, Sespe Gorge (*C. Bratt 7043 ASU*).

Punctelia punctilla (Hale) Krog. [*Parmelia punctilla* Hale]

VENTURA CO.: Conejo Mountains, outcrops on Conejo Mountain (*Riefner 92-53*).

Previously known in North America only from the Point Mugu-Long Grade Canyon area of Ventura Co. It was identified by the late Mason Hale, Jr. (*Riefner 1989*).

Ventura County Lichens: Annotated Checklist

By David L. Magney

Pyrrhospora quernea (Dickson) Korber [*Lecidea quernea* (Dicks.) Ach., *Protoblastenia quernea* (Dicks.) Clauzade] - Lecanoraceae

VENTURA CO.: Conejo Mountains, above Conejo Creek at 99 m/325 ft at 34.11.21°N, 119.0.1°W (K. Knudsen 4049-1 UCR).

Ramalina farinacea (L.) Ach.

VENTURA CO.: Upper Ojai Valley, Dennison Park (C. Bratt 1148 SBBG).

Ramalina leptocarpha Tuck.

VENTURA CO.: Upper Ojai Valley, Dennison Park (C. Bratt 1175 SBBG).



Ramalina menziesii Taylor [*Ramalina reticulata* Taylor]

VENTURA CO.: Ojai Valley, Ojai on *Quercus agrifolia* along upper Foothill Road (D.L. Magney pers. observation 18-July-2013 – see photo to right).



Ramalina subleptocarpha Rundel & Bowler

VENTURA CO.: Santa Monica Mountains, on *Malacothamnus fasciculatus* in Sycamore Canyon, Point Mugu State Park, 34°8'10"N, 119°0'15"W, 213 m (K. Knudsen & T. Sagar 11022 UCR). A dominant species in chaparral.



Rhizocarpon subpostumum (Nyl.) Arnold

VENTURA CO.: Santa Monica Mountains, on Conejo Volcanics on slope across rd & below turnoff for parking area for Sandstone Peak trailhead, 34°6'38"N, 118°55'38"W, 609 m (K. Knudsen 11160 UCR). Rare in California.

Rinodina santa-monicae H. Magn.

VENTURA CO.: Ojai Valley, Lake Casitas (S.C. Tucker 32274 SBBG); Hidden Valley, on *Quercus agrifolia* on Ash property at 1430 Hidden Valley Rd., 34°8'30"N, 118°55'6"W, 362 m (K. Knudsen 9625 UCR).

Rinodina verruciformis Sheard

VENTURA CO.: Upper Sespe Creek, SR33 N of Potrero John Creek (C. Bratt 5043, 5044 SBBG).

Ventura County Lichens: Annotated Checklist

By David L. Magney

Sarcogyne clavus (DC.) Kremp.

VENTURA CO.: Upper Sespe Creek, SR33 N of Derrydale Creek (C. Bratt 4130A SBBG).

Sarcogyne plicata H. Magn.

ORANGE CO.: Santa Ana Mountains, Fremont Canyon, on granite, 268 m, Sept. 22, 2008 (K. Knudsen 10329 UCR); on granite rocks eroded out of sandstone, 343 m, Dec. 6, 2007 (K. Knudsen 9354 UCR); 200 m, on conglomerate rock, Oct. 5, 2007 (K. Knudsen 9004.2 UCR); 956 m, Sept. 18, 2008 (K. Knudsen 10310 UCR). RIVERSIDE CO.: Wildomar, Menifee Hills, on granite wall along seasonal stream, 558 m, Jan. 2, 2004 (K. Knudsen 2124 UCR); 635 m, granite drainages, Dec. 28, 2005 (K. Knudsen 4837 UCR); 543 m, crumbling granite along stream, Oct. 14, 2009 (K. Knudsen 11782 UCR); Joshua Tree National Park: Pleasant Valley, wash crossing Geology Tour Road, 1049 m, on flat granite rock, Dec. 3, 2010 (K. Knudsen 12689 UCR); Malapai Hill, south-facing base on granite rubble, 1165 m, Dec. 2, 2010 (K. Knudsen 12636.1 & 12636.2 UCR); Squaw Tank, on dissected decaying quartz dike on monzogranite dome, 1092 m, Dec. 4, 2010 (K. Knudsen 12748 UCR); desert between Skull Rock & Jumbo Rocks, 1347 m, on monzogranite, Dec. 19, 2010 (K. Knudsen 13150 UCR); San Jacinto Mountains, along Forbes Ranch Road, on granite on pebble plain, 1651 m, March 26, 2006 (K. Knudsen 5698 UCR). SAN BERNARDINO CO.: Granite Mountains, above Granite Cove, along wash, 1335 m, on granite slab, June 6, 2008 (K. Knudsen 9687 UCR); Joshua Tree National Park, Key's Ranch, 1267 m, on granite in washes, May 26, 2005 (K. Knudsen 3041 w/ T. LaDoux UCR); San Gabriel Mountains, San Antonio Creek, in wash behind San Antonio Dam, 761 m, on hard granite boulders in floodplain, June 4, 2004 (K. Knudsen 1230 ASU, MIN, NY, UCR); Santa Ana River Valley, base of San Bernardino Mountains, along Greenspot Road, on granite boulders in floodplain, 533 m, May 1, 2006 (K. Knudsen 5936 w/ M. Knudsen UCR); Woolly Star Preserve, 327 m, on granite boulder, Feb. 7, 2011 (K. Knudsen et al. 13570 UCR). VENTURA CO.: Santa Monica Mountains, Tri-Peaks near Backbone Trail, 829 m, on Conejo volcanics, May 13, 2007 (K. Knudsen 8397 UCR); Yerba Buena Canyon area, 409 m, March 22, 2006 (K. Knudsen 5623 w/D. Magney UCR).

Sarcogyne regularis Korber

VENTURA CO.: Upper Sespe Creek, Sespe Gorge (C. Bratt 5028 SBBG). LOS ANGELES CO.: Topanga State Park, 34°5'41"N, 118°33'4"W, 552 m, on limestone (K. Knudsen et al. 9559 UCR).

Sarcopyrenia bacillosa (Nyl. Ex Hass) Nav.-Ros. & Hladun

VENTURA CO.: Santa Monica Mountains, parasitic on *Acarospora socialis* on slope above SR23 near Lake Eleanor Dam, Conejo Open Space, 34°8'10"N, 118°51'13"W, 296 m (K. Knudsen 11240 UCR). LOS ANGELES CO.: Santa Monica Mountains, near Old Soldier's Home. SAN DIEGO CO. CONTRA COSTA CO.: Richmond.

Schizopelte californica Th. Fr. [*Combea californica* [Th. Fr.] Follm. & Geyer]

LOS ANGELES CO.: Santa Monica Mountains, Point Dume (Halling 613 ASU, SFSU), Point Dume Nature Reserve, 34°0'8"N, 118°48'30"W, 10 m, on rock wall (K. Knudsen & T. Sagar 11213 UCR). MONTEREY CO.: Willow Creek (Rundel s.n. Herb. Rundel). SAN LUIS OBISPO CO.: White Point at Morro Bay State Park (Riefner 85-507); Cayucos (Riefner 89-70); Morro Rock Reserve (Riefner 87-193 COLO, US). ORANGE CO.: Abalone Point (Riefner 90-137); South Laguna (Nash 10300 ASU).

Ventura County Lichens: Annotated Checklist

By David L. Magney

This unusual fog zone lichen, still abundant on the Channel Islands but rare on the mainland, was apparently thought by Hale and Cole (1988) to be only in Los Angeles and Ventura Cos. The Orange Co. collection appears to be a rare find for the south-coast mainland (Orcutt 1907; Hasse 1913). Tehler (1993) believes that this species should not be placed in *Combea*.

Sphinctrina leucopoda (Pers. Ex Fr.) De Not.

VENTURA CO.: Santa Monica Mountains, Wood Canyon, Point Mugu State Park, 34°7'38"N, 119°0'51"W, 383 m, on *Lecanora ganglaeoides* in *Quercus agrifolia* woodland (*J. Kocourková et al. sn 13-Aug-2009 PRM 915676*).

Staurothele drummondii (Tuck.) Tuck.

VENTURA CO.: Santa Monica Mountains, on Conejo Volcanics on steep drainage of bedrock below Sandstone Peak, 34°0'7"N, 118°56'0"W, 883 m (*K. Knudsen 2487 UCR*). Rare in Santa Monica Mountains.

Staurothele elenkinii Oxner.

VENTURA CO.: Santa Monica Mountains, along trunk trail on ridge between Wood Canyon and upper La Jolla Valley, Point Mugu State Park, 34°6'39"N, 119°01'36"W, 267 m (*K. Knudsen et al. 11576.1 UCR*). Rare in Santa Monica Mountains.

Teloschistes chrysophthalmus (L.) Th. Fr.

VENTURA CO.: Ojai Valley (*W.A. Weber 26719 ASU*).

Thelenella modesta (Nyl.) Nyl.

VENTURA CO.: Santa Monica Mountains, on *Malacothamnus fasciculatus* in upper La Jolla Valley, Point Mugu State Park, 34°6'37"N, 119°01'46"W, 270 m (*K. Knudsen et al. 11573 UCR*). Rare in Santa Monica Mountains.

Thyrea nigrifella Lettau

VENTURA CO.: Upper Sespe Creek, SR33 N of Derrydale Creek (*C. Bratt 4117, 4118 SBBG*).

Toninia ruginosa (Tuck.) Herre

VENTURA CO.: Upper Sespe Creek, Sespe Creek at Portrero John Creek (*C. Bratt 7046 ASU*); Sespe Gorge (*C. Bratt 7041 ASU, C. Bratt 6040 SBBG*); Nordhoff Ridge, Wheeler Gorge (*C. Bratt 7038 ASU*).

Toninia sedifolia (Scop.) Timdal

VENTURA CO.: Upper Sespe Creek, Sespe Gorge (*C. Bratt 7042 ASU*).

Toninia submexicana de Lesd.

VENTURA CO.: Upper Sespe Creek, Sespe Gorge (*C. Bratt 7041 ASU*).

Trapelia glebulosa (Sm.) J.R. Laund.

VENTURA CO.: Topatopa Mountains, Sisar Canyon (*M. Cole 1248 SBBG*).

Trapeliopsis steppica McCune & Camacho

VENTURA CO.: Santa Monica Mountains, along trunk trail on ridge between Wood Canyon and upper La Jolla Valley, Point Mugu State Park, 34°6'39"N, 119°01'36"W, 267 m (*K. Knudsen et al. 11576.2 UCR*). LOS ANGELES CO.: Santa Monica Mountains, Malibu Creek State Park along Backbone Trail. Rare in Santa Monica Mountains.

Ventura County Lichens: Annotated Checklist

By David L. Magney

Verrucaria furfuracea (B. de Lesd) Breuss

Verrucaria furfuracea (B. de Lesd) Breuss (Verrucariaceae family) is a black-colored crustose lichen typically found on rock substrates. It ranges from southern California to Arizona and Nevada; however, it has only been collected 17 times, including that from the Ash property.

LOS ANGELES CO.: Santa Monica Mountains, Calabash Canyon on N-facing slope above stream (*K. Knudsen 7959* UCR); Ballona Creek, intertidal zone on S levee near confluence of Centinela Creek (*K. Knudsen 8284* UCR). SAN DIEGO CO.: Cuyamaca State Park: Paso Picacho Campground: unburnt oaks and conifers (*K. Knudsen 3469* UCR). ORANGE CO.: Santa Ana Mountains, N of Windy Ridge Road in seasonal streambed cut through sandstone outcrop (*K. Knudsen 6416* UCR). SANTA BARBARA CO.: San Miguel Island, between Green Mountain and San Miguel Hill (*K. Knudsen 6702* UCR), exposed caliche outcrop on trail to Caldwell Point near ravine in Willow Canyon drainage (*K. Knudsen 6728* UCR), south of summit of Green Mountain (*K. Knudsen 6751* UCR), top of Green Mountain (*K. Knudsen 6790* UCR); Santa Rosa Island, along Smith Highway (*K. Knudsen 7397* UCR), Quernada Canyon (*K. Knudsen 8679* UCR), Sandy Point (*K. Knudsen 8797* UCR). VENTURA CO.: Santa Monica Mountains/Hidden Valley, on Conejo Volcanics boulder outcrop at edge of the in Wildflower Field, Ventura County on Charles Ash's property at 1430 Hidden Valley Road (*K. Knudsen 9667* UCR); Conejo Mountains, grout of brick wall of abandoned house foundation (*K. Knudsen et al. 5150* UCR).

ARIZONA. MARICOPA CO.: White Tank Mountains, County Regional Park (*T.H. Nash III 9829-a* ASU).

Verrucaria fusca Pers.

VENTURA CO.: Upper Sespe Creek, Sespe Gorge (*C. Bratt 5036* SBBG).

Verrucaria rupicola (B. de Lesd) Breuss

VENTURA CO.: Santa Monica Mountains, on sandstone boulder in Sycamore Canyon, Point Mugu State Park, Ranch Center Trail in hills, 34°8'3"N, 118°58'54"W, 173 m (*K. Knudsen et al. 11234* UCR).

Xanthomendoza fulva (Hoffm.) Sochting, Karnefelt & S. Kondr.

VENTURA CO.: Santa Monica Mountains, on *Quercus agrifolia* in Wood Canyon, Point Mugu State Park, 34°7'38"N, 119°0'51"W, 383 m (*J. Kocourková et al. sn 13-Aug-2009* UCR). LOS ANGELES CO.: Santa Monica Mountains, Topanga Canyon along SR 27, 34°7'38"N, 118°35'36"W, 383 m, on *Juglans californica* (*K. Knudsen 1548.4* UCR).

Xanthomendoza hasseana (Rasanen) Sochting, Karnefelt & S. Kondr.

VENTURA CO.: Hidden Valley, on *Quercus agrifolia* on Ash property at 1430 Hidden Valley Rd., 34°8'30"N, 118°55'6"W, 362 m (*K. Knudsen 9614* UCR). Rare in the Santa Monica Mountains.

Xanthoparmelia lineola (E.C. Berry) Hale

VENTURA CO.: Ojai Valley, Lake Casitas (*S. Tucker 32273* ASU/SBBG).

Xanthoparmelia cumberlandia (Gyelnik) Hale

VENTURA CO.: Upper Ojai Valley, Dennison Park (*C. Bratt 1162, 1163* SBBG).

Xanthoparmelia oleosa (Elix & P.M. Armstrong) Elix

VENTURA CO.: Upper Sespe Creek, Sespe Gorge (*C. Bratt 5032* SBBG).

Ventura County Lichens: Annotated Checklist

By David L. Magney

Xanthoparmelia verruculifera (Nyl.) O. Blanco, A. Crespo, Elix, D. Hawksw. & Lumbsch
VENTURA CO.: Santa Monica Mountains, on Conejo Volcanics on slope above SR23 near Lake Eleanor Dam, Conejo Open Space, 34°8'10"N, 118°51'13"W, 296 m (*K. Knudsen et al. 10712 UCR*). LOS ANGELES CO.: Santa Monica Mountains, Leo Carrillo State Park, Nicolas Flat, 34°3'50"N, 118°54'35"W, 434 m, (*J. Kocourková & K. Knudsen s.n. 14-Aug-2009 UCR*).

Xanthoria candelaria (L.) Th.Fr.
VENTURA CO.: Sulphur Mountain, Wheeler Canyon on UNOCAL property (*C. Bratt 11303 SBBG*). LOS ANGELES CO.: Santa Monica Mountains, Point Dume, Point Dume Nature Preserve, on *Coreopsis gigantea*, 34°0'8"N, 118°48'30"W, 10 m (*K. Knudsen & T. Sagar 11208 UCR*).

Xanthoria elegans (Link) Th. Fr.
VENTURA CO.: Upper Sespe Creek, SR33 N of Derrydale Creek (*C. Bratt 4120 SBBG*).

Xanthoria fallax (Hepp) Arnold
VENTURA CO.: Sulphur Mountain, Wheeler Canyon on UNOCAL property (*C. Bratt 11299 SBBG*).

Xanthoria hasseana Rasanen
VENTURA CO.: Sulphur Mountain, Wheeler Canyon on UNOCAL property (*C. Bratt 11302 SBBG*).

Xanthoria oregana Gyeln.
VENTURA CO.: Sulphur Mountain, Wheeler Canyon on UNOCAL property (*C. Bratt 11304 SBBG*).

Xanthoria parietina (L.) Th. Fr.
VENTURA CO.: Hidden Valley, on *Quercus agrifolia* on Ash property at 1430 Hidden Valley Rd., 34°8'30"N, 118°55'6"W, 362 m (*K. Knudsen 9614 UCR*). Rare in southern California.

Xanthoria polycarpa (Hoffm.) Rieber
VENTURA CO.: Upper Ojai Valley, Dennison Park (*C. Bratt 1178 SBBG*).



Xanthoria ramulosa (Tuck.) Herre
VENTURA CO.: Upper Ojai Valley, Dennison Park (*I. Tavares 550c ASU*).

Ventura County Lichens: Annotated Checklist

By David L. Magney

Lichen Taxa Expected to Occur in Ventura County

The following lichen taxa are included as expected to occur in Ventura County since they occur in adjacent counties very close to the Ventura County line and suitable habitat is present.

Abrothallus tulasnei M.S. Cole & D. Hawksw.

LOS ANGELES CO: Santa Monica Mountains, Leo Carrillo State Park, Nicolas Flats, on *Xanthoparmelia* sp. (*J. Kocourková & K. Knudsen* PRM).

Arthonia infectans Egea & Torrente

LOS ANGELES CO.: Santa Monica Mountains, Point Dume, Point Dume Nature Preserve, on rock wall, 34°0'8"N, 118°48'30"W, 10 m (*K. Knudsen & T. Sagar 11215* UCR).

Arthonia subdispuncta Nyl. Ex Hasse

LOS ANGELES CO.: Santa Monica Mountains, Point Dume, Point Dume Nature Preserve, on *Coreopsis gigantea* (*H.E. Hasse sn nd* FH, PH, NY).

Aspicilia confusa Owe-Larss. & A.Nordin

LOS ANGELES CO.: Santa Monica Mountains, Hennessey, N of Mulholland Blvd, S of Castro Crest, on N slope on sandstone, 34°5'58"N, 118°47'8"W, 445m (*K. Knudsen 11171* UCR). Common in Southern California

Bactrospora patellarioides (Nyl.) Almq. [*Bacidia clemantis* Hasse]

LOS ANGELES CO: Santa Monica Mountains, Leo Carrillo State Park, Nicolas Flats, on *Quercus agrifolia* (*K. Knudsen & J. Kocourková 11590* UCR). Type Locality in Santa Ynez Canyon, Santa Barbara County, on *Heteromeles arbutifolia*.

Bagliettoa calciseda (DC.) Gueidan & Cl. Roux [*Bacidia clemantis* Hasse]

LOS ANGELES CO: Santa Monica Mountains, Topanga State Park, on limestone, 34°5'41"N, 118°33'4"W, 552 m (*K. Knudsen et al. 9556* UCR). Also from Santa Ynez Canyon, Santa Barbara County, on calcite rock.

Buellia prospersa (Nyl.) Riddle

LOS ANGELES CO.: Santa Monica Mountains, Point Dume, Point Dume Nature Preserve, on rock wall, 34°0'8"N, 118°48'30"W, 10 m (*K. Knudsen & T. Sagar 11209* UCR). This is a maritime species from Sonoran Mexico and coastal southern California.

Catillaria lenticularis (Ach.) Th. Fr.

LOS ANGELES CO: Santa Monica Mountains, Latigo Canyon, on slate rock, 34°3'34"N, 118°46'34"W, 361 m (*K. Knudsen 11150* UCR).

Cladonia maritima K. Knudsen & Lendemer

LOS ANGELES CO.: Santa Monica Mountains, Zuma Ridge (Knudsen & Lendemer 2009).

Collempsidium sublitorale (Leighton) Grube & B.D. Ryan.

LOS ANGELES CO: Santa Monica Mountains, Leo Carrillo State Park, Sequit Point, 34°2'34"N, 118°56'12"W, 0 m (*K. Knudsen et al. 11577* UCR). An intertidal species.

Hyperphyscia adglutinata (Flörke) H. Mayrhofer & Poelt

LOS ANGELES CO: Santa Monica Mountains, Latigo Canyon, on *Juglans californica*, 34°4'53"N, 118°47'45"W, 562 m (*K. Knudsen 11163* UCR). Common on *Quercus agrifolia* and *Juglans californica*.

Ventura County Lichens: Annotated Checklist

By David L. Magney

Intralichen baccisporus D. Hawksw. & M.S. Cole

LOS ANGELES CO: Santa Monica Mountains, Leo Carrillo State Park, Nicolas Flats, on *Caloplaca bolacina* (J. Kocourková & K. Knudsen sn 14-Aug-2009 PRM 915679).

Lecanactis salicina Zahlbr.

LOS ANGELES CO.: Santa Monica Mountains, Point Dume, Point Dume Nature Preserve, on *Coreopsis gigantea*, 34°0'8"N, 118°48'30"W, 10 m (K. Knudsen & T. Sagar 10669 UCR). Rare in the Santa Monica Mountains.

Lecanora munzii K. Knudsen & Lendemer

LOS ANGELES CO.: Santa Monica Mountains, Griffith Park, on wood (Knudsen & Lendemer 2009).

Leptogium plicatile (Ach.) Leighton

LOS ANGELES CO: Santa Monica Mountains, Topanga State Park, on limestone, 34°5'41"N, 118°33'4"W, 552 m (K. Knudsen et al. 9551 UCR).

Letharia columbiana (Nutt.) J.W. Thomson

KERN CO: San Emigdio Range, near Frazier Park, on *Pinus monophylla*, 1,372 m (C.M. Wetmore sl-7578, 14781 BRY).

Lichenocodium erodens M.S. Christ. & D. Hawksw.

LOS ANGELES CO: Santa Monica Mountains, Leo Carrillo State Park, Nicolas Flats, near the lake on *Xanthoparmelia cumberlandia* (J. Kocourková & K. Knudsen sn 14-Aug-2009 PRM: Holotype) and *Evernia prunastri* (J. Kocourková & K. Knudsen sn 14-Aug-2009 PRM 915672).

Lichenodiplis lecanorae (Vouaux) Dyko & D. Hawksw.

LOS ANGELES CO: Santa Monica Mountains, Leo Carrillo State Park, Nicolas Flats, near the lake on *Quercus agrifolia* on apothecia of *Rinodina* sp. (J. Kocourková & K. Knudsen sn 14-Aug-2009 PRM 915674).

Lichenodiplis rinodinicola Kocourk. & K. Knudsen

LOS ANGELES CO: Santa Monica Mountains, Leo Carrillo State Park, Nicolas Flats, near the lake on *Quercus agrifolia* on apothecia of *Rinodina* sp. (J. Kocourková & K. Knudsen 7323 PRM: Holotype).

Lichenothelia renobalesiana D. Hawksw. & V. Atienza

LOS ANGELES CO: Santa Monica Mountains, Topanga State Park, on *Bagliettoa calciseda* on limestone, 34°5'41"N, 118°33'4"W, 552 m (K. Knudsen et al. 9660 UCR).

Llimonaea cerebriiformis (Egea & Torrente) Sparrius

LOS ANGELES CO.: Santa Monica Mountains, Point Dume, Point Dume Nature Preserve, on *Coreopsis gigantea*, 34°0'8"N, 118°48'30"W, 10 m (K. Knudsen & T. Sagar 11214 UCR). Rare in the Santa Monica Mountains and California.

Muellerella erratica (A. Massal.) Hafellner & V. John

LOS ANGELES CO: Santa Monica Mountains, Topanga State Park, on *Verrucaria muralis*, 34°5'41"N, 118°33'4"W, 552 m (K. Knudsen et al. 9660.2 UCR); Leo Carrillo State Park, Arroyo Sequit, 34°3'53"N, 118°55'56"W. 83 m, on *Lecanora subimmersens* (J. Kocourková & K. Knudsen sn 13-Aug-2009 PRM 915678).

Ochrolechia arborea (Kreyer) Almb. [*Pertusaria arborea* (Kreyer) Zahlbr.] - Ochrolechiaceae

LOS ANGELES CO: Santa Monica Mountains, Leo Carrillo State Park, Nicolas Flats, on *Quercus agrifolia* (K. Knudsen & J. Kocourková 11588 UCR). Rare on bark of

Ventura County Lichens: Annotated Checklist

By David L. Magney

Quercus agrifolia. SAN LUIS OBISPO CO.: Morro Bay, ridge N of Baywood at 15 m (*T. Tonsberg 18445* ASU). SANTA BARBARA CO.: Santa Ynez Mountains, Hollister Ranch, De La Cresta, 400 m (*T. Tonsberg 18408* ASU).

Ochrolechia mexicana Vainio - Ochrolechiaceae

LOS ANGELES CO: Santa Monica Mountains, Espanoza Canyon, 400 m, on *Quercus agrifolia* (*B.D. Ryan 11275* ASU). MONTEREY CO.: Santa Lucia Mountains. SANTA BARBARA CO.: Santa Rosa Island.

Ochrolechia subpallescens Vers. - Ochrolechiaceae

LOS ANGELES CO: Santa Monica Mountains (*H.E. Hasse 170* ASU); Santa Catalina Island. MONTEREY CO.: Santa Lucia Mountains. SAN BERNARDINO CO.: San Bernardino Mountains, 3 km S of Arrowhead Lake. SAN LUIS OBISPO CO.: near Montana del Oro SP; Cuesta Ridge, Cuesta Pass. SANTA BARBARA CO.: Santa Rosa Island, Santa Cruz Island.

Phaeosporobolus alpinus R. Sant., Alstrup & D. Hawksw.

LOS ANGELES CO: Santa Monica Mountains, Leo Carrillo State Park, Nicolas Flats, 34°3'50"N, 118°54'35"W, 434 m, on corticolous *Pertusaria* (*J. Kocourková & K. Knudsen sn 14-Aug-2009* UCR). First report in California.

Physcia clementei (Sm.) Lynge

LOS ANGELES CO: Santa Monica Mountains, Topanga Canyon, along SR27 on *Juglans californica*, 34°8'30"N, 118°55'6"W, 362 m (*K. Knudsen 1548.1* UCR). Rare in southern California and on Channel Islands.

Placopyrenium heppioides (Zahlbr.) Breuss

LOS ANGELES CO: Santa Monica Mountains, Topanga Canyon (*H.E. Hasse sn nd* FH, MIN).

Placynthium nigrum (Hudson) Gray

LOS ANGELES CO: Santa Monica Mountains, Topanga State Park, on limestone, 34°5'41"N, 118°33'4"W, 552 m (*K. Knudsen et al. 9552.2* UCR). Rare in the Santa Monica Mountains, found on limestone/calclitic rock.

Pseudocyphellaria anomala Brodo & Ahti

LOS ANGELES CO: Santa Monica Mountains, Topanga Canyon, on rocks (*H.E. Hasse sn 1907* NY as *Stickta weigelii*).

Psorotichia schaeereri (A. Massal.) Arnold

LOS ANGELES CO: Simi Hills, Dayton Canyon, ridge S of Quiet Hills, on calcareous rock, (*F. Landis sn 18-Dec-2005* UCR). Rare in California.

Rinodina pacifica Sheard

LOS ANGELES CO: Santa Monica Mountains, Leo Carrillo State Park, Sequit Point, 34°2'54"N, 118°55'58"W, 65 m (*K. Knudsen et al. 3724.2* UCR). Rare in shaded riparian habitat of the Santa Monica Mountains.

Sphaerellothecium breussii K. Knudsen, Kocourk. & Etayo

LOS ANGELES CO: Santa Monica Mountains, on *Placidium lacinulatum*. Rare in the Santa Monica Mountains.

Ventura County Lichens: Annotated Checklist

By David L. Magney

Stigmidium epistegmellum (Nyl. Ex Vouaux) Kocourk. & K. Knudsen

LOS ANGELES CO: Santa Monica Mountains, Leo Carrillo State Park, Nicolas Flats, 34°3'50"N, 118°54'35"W, 434 m, on *Caloplaca bolacina* (J. Kocourková & K. Knudsen sn 14-Aug-2009 PRM 915673).

Syzygospora physciacearum Diederich

LOS ANGELES CO: Santa Monica Mountains, Leo Carrillo State Park, Nicolas Flats, 34°3'50"N, 118°54'35"W, 434 m, on *Physcia dimidiata* (J. Kocourková & K. Knudsen sn 14-Aug-2009 PRM 915675).

Thelenella hassei (Zahlbr.) H. Mayrhofer [*Microglæna hassei* Zahlbr.]

LOS ANGELES CO: Santa Monica Mountains, on *Juglans californica* and *Prunus ilicifolia*. Rare in the Santa Monica Mountains.

Thelenella inductula (Nyl. ex Hasse) H. Mayrhofer [*Verrucaria inductula* Nyl. ex Hasse]

LOS ANGELES CO: Santa Monica Mountains, on rock. Rare in the Santa Monica Mountains.

Thelenella sychnogonioides (Zahlbr.) R.C. Harris [*Microglæna sychnogonioides* Zahlbr.]

LOS ANGELES CO: Santa Monica Mountains, on *Juglans californica* and *Prunus ilicifolia*. Rare in the Santa Monica Mountains.

Verrucaria muralis Ach.

LOS ANGELES CO: Santa Monica Mountains, Topanga State Park, on limestone, 34°5'41"N, 118°33'4"W, 552 m (K. Knudsen et al. 9553 UCR). Rare in the Santa Monica Mountains, found on limestone/calcareous rock.

Vouauxiella lichenicola (Linds.) Petrak & Syd.

LOS ANGELES CO: Santa Monica Mountains, Leo Carrillo State Park, Nicolas Flats, 34°3'50"N, 118°54'35"W, 434 m, on *Lecanora cicumborealis* on *Quercus agrifolia* (J. Kocourková & K. Knudsen sn 14-Aug-2009 PRM 915674).