

Checklist of Ventura County Rare Plants¹

By David L. Magney

California Native Plant Society, Channel Islands Chapter

Updated 21 May 2008

Ventura County is located in southern California, USA, along the east edge of the Pacific Ocean. The coastal portion occurs along the south and southwestern quarter of the County. Ventura County is bounded by Santa Barbara County on the west, Kern County on the north, Los Angeles County on the east, and the Pacific Ocean generally on the south (Figure 1, General Location Map of Ventura County).

Ventura County extends north to 34.9014°N latitude at the northwest corner of the County. The County extends westward at Rincon Creek to 119.47991°W longitude, and eastward to 118.63233°W longitude at the west end of the San Fernando Valley just north of Chatsworth Reservoir. The mainland portion of the County reaches southward to 34.04567°N latitude between Solromar and Sequit Point west of Malibu. When including Anacapa and San Nicolas Islands, the southernmost extent of the County occurs at 33.21°N latitude and the westernmost extent at 119.58°W longitude, on the south side and west sides of San Nicolas Island, respectively.

Ventura County occupies 480,996 hectares [ha] (1,188,562 acres [ac]) or 4,810 square kilometers [sq. km] (1,857 sq. miles [mi]), which includes Anacapa and San Nicolas Islands. The mainland portion of the county is 474,852 ha (1,173,380 ac), or 4,748 sq. km (1,833 sq. mi.) in area and ranges in elevation from sea level on the southwest to 2,692 meters [m] (8,831 feet [ft.]) above sea level at its northern border on Mount Piños (Figure 2, Shade Relief Map of Mainland Ventura County). There appears to be some discrepancy in the actual area covered by Ventura County, depending on the source. For example, according to the California County Fact Book, 1983 edition (California Supervisors Association of California 1983), Ventura County occupies an area of 482,668 ha (1,192,680 ac) or 2,999 sq. km (1,863.6 sq. mi), with 3,254 ha (8,040 ac) or 20.3 sq. km (12.6 sq. mi) of that as water. The discrepancy appears to be a little over 2,469 ha (6,100 ac), which does not correspond to the area occupied by the two islands within the County. However, the difference does appear to match the area occupied by a rectangular portion of the county in the northeast corner, where the Ventura County Board of Supervisors voted to give away approximately 6,100 acres to Kern County to accommodate a proposed development that Ventura County felt it could not provide adequate County services to.

Mainland Ventura County is located between 34°00' and 35°00'N latitude and 118°38' and 119°28'W longitude, excluding Anacapa and San Nicolas Islands, and is generally longer than wide. Anacapa Islands are the smallest and easternmost of the northern Channel Islands while San Nicolas Island is an outer southern Channel Island.

¹ This document should be cited as: Magney, D.L. 2008. Checklist of Ventura County Rare Plants. 21 May 2008. California Native Plant Society, Channel Islands Chapter, Ojai, California. (Previous published update dated 3 August 2007.)

Figure 1. General Location Map of Ventura County

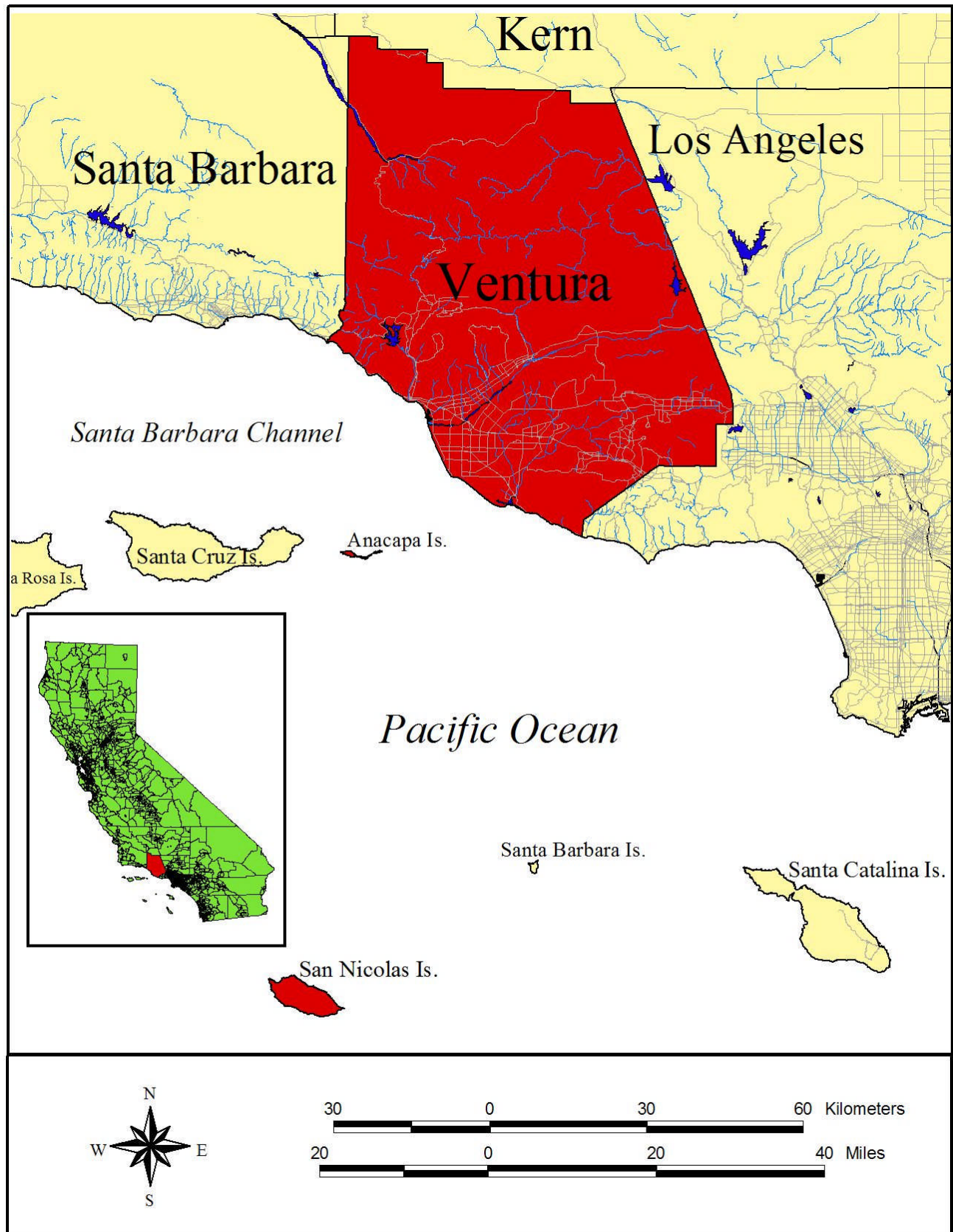
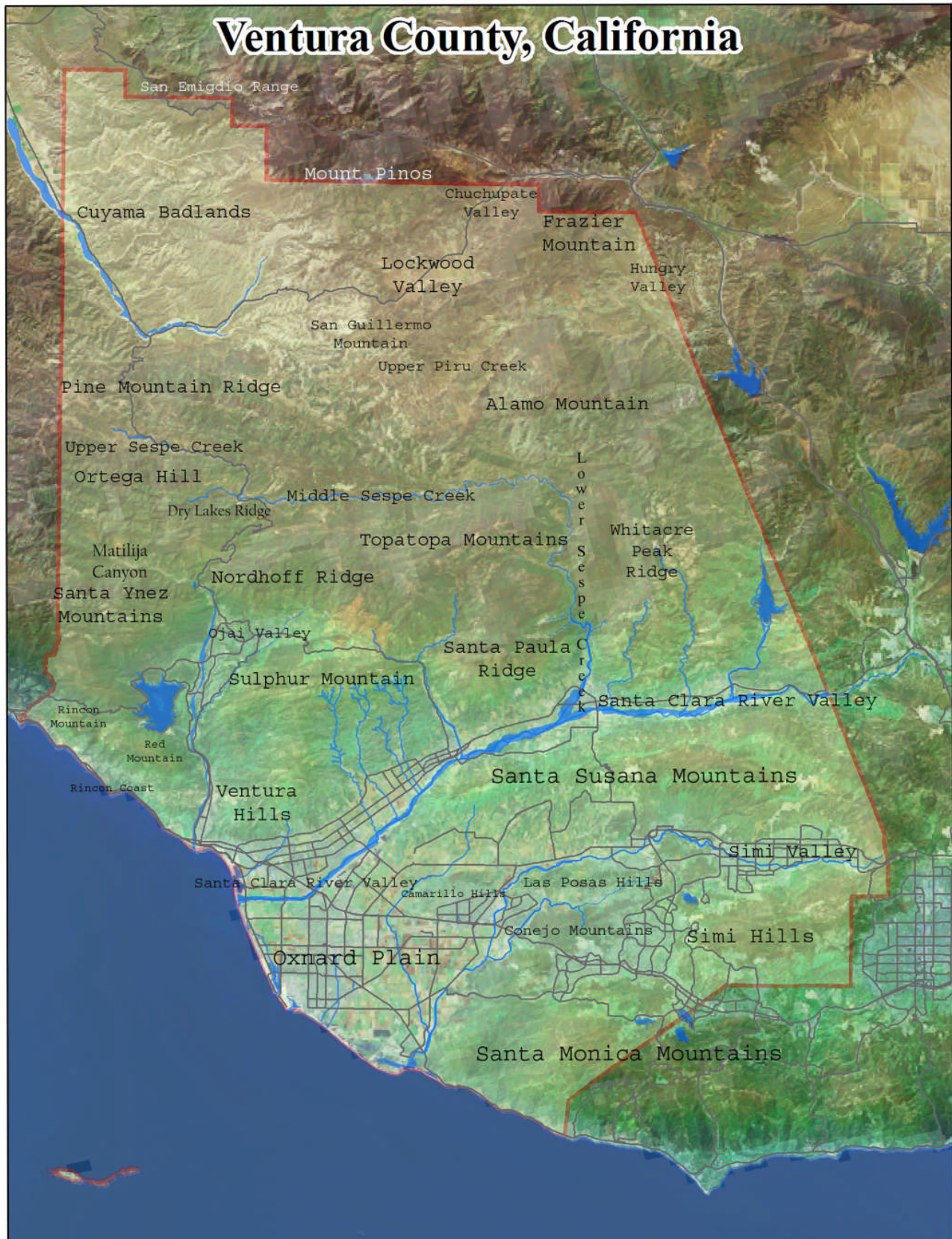


Figure 2. Shade Relief Map of Mainland Ventura County



The flora of Ventura County is comprised of approximately **2,321** native and naturalized vascular plant taxa, including those expected to occur but for which no vouchers are known (214 taxa). A total of 2,111 taxa (91.0%) are known to occur in the county that are supported by voucher specimens, or have been observed by the author. Approximately 1,833 taxa (78.9%) of the flora are native, and another 488 (21.0%) taxa are not native (based on a flora of 2,321 taxa). A small percentage (8.0%) of the flora taxa (186 taxa) are quite common (dominant or common), on a scale ranging from dominant to rare (dominant, common, occasional, scattered, uncommon, and rare). Many more of the plant taxa in Ventura County are uncommon to quite rare.

All the species (including varieties and subspecies, which are lower taxonomic units than full species) of native and naturalized plants are important components of the biodiversity of life in Ventura County. While most species do not recognize political boundaries, such as county boundaries, our government agencies set policies and manage land use and resources based on such jurisdictional boundaries.

This list represents a compilation of known records and observations (many by the author) of all native vascular plant species:

- With ten (10) or fewer populations within Ventura County;
- Listed by CNPS on a statewide basis (CNPS 2001);
- Listed by the US Fish and Wildlife Service as Threatened or Endangered under the federal Endangered Species Act;
- Listed by the California Fish and Game Commission as Rare, Threatened, or Endangered;
- Are at the limits of their distribution range (southernmost, northernmost, westernmost extent); or
- The Type Locality occurs within the County (then only the Type Locality is considered sensitive).

Some taxa are considered rare or uncommon throughout California, as established by the California Native Plant Society (CNPS) in its *Inventory of Rare and Endangered Plants of California*, sixth edition², even though more than ten populations are known from Ventura County, including Anacapa Islands and San Nicolas Island. Currently there are **1,203** taxa (51.8% of the county flora) included on this list of locally rare plants (including taxa rare statewide), which include taxa on the mainland and two islands (Anacapa and San Nicolas). Another 164 (7.1%) were appended that are likely to occur in the County but for which no voucher specimens or reliable locality data are available. These are included at the end of this list. Many of these potential additions are known to occur in adjacent counties and expected to occur in Ventura County. A total of 62 plants (2.7%) considered rare in Ventura County occur only on the Channel Islands (Anacapa and San Nicolas Islands) portion of the county. A number of taxa were deleted from this list when over ten occurrences were known to occur in Ventura County.

This list was compiled as the results of extensive research of the flora of Ventura County. It is based on extensive field searches; examination of specimens collected by others housed at public herbaria; and published reports. The author began research on the Ventura County flora in the late 1970s.

Soon to be published separately, *Ventura County Rare Plants* will provide much more information about those plants included in this checklist, including: a brief description of the plant, habitat preferences, associated plant communities, elevation range, and blooming period. That publication will include additional information for each taxon, including complete scientific name, known synonyms, common name(s), habit and size, rarity status, months it is in bloom or identifiable, and general and

² California Native Plant Society. 2001. *Inventory of Rare and Endangered Plants of California*. Sixth edition. (Special Publication No. 1.) Rare Plant Scientific Advisory Committee, David Tibor, Convening Editor, Sacramento, California. September.

specific locality data, with supporting voucher collection information. Each specimen cited for a specific location includes the name of the collector, the collection number (or collection date if no number was assigned), and the herbarium in which it is stored (some duplicate specimens have been deposited in more than one herbarium). Location information is provided at two levels: a general geographic area, and then specific locations.

This list should be considered the best available information at the time of publication, as our knowledge of the Ventura County flora is dynamic, and growing with each botanical survey or foray. This checklist will be updated periodically and revised according to all new verifiable information provided. Occurrences of vascular plants found in Ventura County that add to or could change the status of any plant listed here should be submitted to the author via CNPS (attention: David Magney) or via email to [david\(at\)magney\(dot\)org](mailto:david(at)magney(dot)org). Any lists submitted must be supported by voucher specimens that are deposited in a public herbarium, according to CNPS and California Botanical Society policies based on Ferren et al. (1995³).

Plants not included in CNPS's *Inventory*, or listed by federal and state agencies, that have more than ten populations in Ventura County will be dropped from this list, except for those plants:

- representing range limits, such as the westernmost limit of the taxons range; or
- the "Type Locality" sites ("Type Locality" sites are the sites from which the plant was originally collected and formally described from, and is represented by a "Type Specimen", for which a note occurs after the herbarium at which it is deposited as "Holotype" or "Isotype").

For those plants that are otherwise relatively common in Ventura County, only the populations that represent the limit of a plants range should be considered of concern (as sensitive), with the remaining population(s) noted to provide perspective, but not considered sensitive/rare for the purposes of this checklist. *Artemisia tridentata* var. *tridentata* is an example of this, where it should be considered of local concern when it occurs in the western portion of the Santa Clara River Valley (the limit of its range) while the populations in the Upper Sespe Creek watershed and the northern part of the county are not of concern from a rarity perspective.

Special-status species are plants that are either listed as endangered or threatened under the Federal or California Endangered Special Acts; or considered to be rare under the California Native Plant Protection Act; or considered to be rare (but not formally listed) by resource agencies, professional organizations (e.g. California Native Plant Society), and the scientific community. For the purposes of this checklist, special-status species are further defined in Table 1, Definitions of Special-Status Plant Species.

Listed species are those taxa that are formally listed as endangered or threatened by the federal government (e.g. U.S. Fish and Wildlife Service [USFWS]) pursuant to the national Endangered Species Act or as endangered, threatened, or rare (for plants only) by the State of California (i.e. California Fish and Game Commission) pursuant to the California Endangered Species Act or the California Native Plant Protection Act.

The CNDDDB Element Ranking system provides a numeric global and state ranking system for all special-status plant and wildlife species and rare habitats tracked by the CNDDDB. The global rank (G-rank) is a reflection of the overall condition of an element (species or natural community) throughout its global range. The state ranking (S-rank) is assigned much the same way as the global rank, except state ranks in California often also contain a threat designation attached to the S-rank. This Element Ranking

³ Ferren, W.R., Jr., D.L. Magney, and T.A. Sholars. 1995. The Future of California Floristics and Systematics: Collecting Guidelines and Documentation Techniques. *Madroño* 42(2):197-210.

system is defined below in Table 2, Natural Diversity Data Base Element Ranking System. Not all special-status species considered in this checklist are tracked by the CNDDDB, nor have global or state rarity ranking been given to them; therefore, the author has applied the rules described above to “rank” those special-status species lacking such ranking. Taxa for which Global and State rarity ranking have been devised here are followed by a “?” in parentheses, denoting tentative assignment.

Table 1. Definitions of Special-Status Plant Species

<ol style="list-style-type: none"> 1. Plants legally protected under the California and Federal Endangered Species Acts or under other regulations. 2. Plants considered sufficiently rare by the scientific community to qualify for such listing; or 3. Plants considered to be sensitive because they are unique, declining regionally or locally, or are at the extent of their natural range.
Special-Status Plant Species
<ul style="list-style-type: none"> ◆ Plants listed or proposed for listing as threatened or endangered under the Federal Endangered Species Act (50 CFR 17.12 for listed plants and various notices in the Federal Register for proposed species). ◆ Plants that are Category 1 or 2 (species of special concern) candidates for possible future listing as threatened or endangered under the Federal Endangered Species Act (55 CFR 6184, February 21, 1990). ◆ Plants that meet the definitions of rare or endangered species under the CEQA (<i>State CEQA Guidelines</i>, Section 15380). ◆ Plants considered by the CNPS to be "rare, threatened, or endangered" in California (Lists 1A, 1B, and 2 in CNPS [2001]⁴). ◆ Plants listed by CNPS as plants about which we need more information and plants of limited distribution (Lists 3 and 4 in CNPS [2001]). ◆ Plants listed or proposed for listing by the State of California as threatened or endangered under the California Endangered Species Act (14 CCR 670.5). ◆ Plants listed under the California Native Plant Protection Act (California Fish and Game Code 1900 <i>et seq.</i>). ◆ Plants considered sensitive by other federal agencies (i.e. U.S. Forest Service, Bureau of Land Management) or state and local agencies or jurisdictions. ◆ Plants considered sensitive or unique by the scientific community or occurring at the limits of its natural range (<i>State CEQA Guidelines</i>, Appendix G).

CNPS’s *Inventory of Rare and Endangered Plants of California*⁵ categorizes rare California plants into one of five lists (1A, 1B, 2, 3, & 4) representing the five levels of species status, one of which is assigned to a sensitive species to indicate its status of rarity or endangerment and distribution. A CNPS List is a more general designation than the three separate sets of information provided in a CNPS R-E-D Code (see the CNPS *Inventory* for definitions). However, the CNPS List is a significant designation in terms of a species’ overall status throughout all of California, and it works well in conjunction to the specifications of the R-E-D Code. The CNPS R-E-D Code is a three-numbered numeric ranking, which is assigned to a special-status species, consisting of one number (1, 2, or 3) for each of the three categories (Rarity-Endangerment-Distribution). Each number accurately describes the species’ population levels and distribution patterns within each category.

As described for the NDDDB ranking, not all special-status species (most) considered in this checklist are tracked by CNPS, nor have R-E-D codes been given to them; however, the author has applied the rules described above to “rank” those special-status species lacking such ranking to either “rare” or “uncommon”; however, these rankings are not included in the checklist. Rather the occurrence

⁴ California Native Plant Society. 2001. *Inventory of Rare and Endangered Plants of California*. Sixth Edition. Sacramento, California. September.

⁵ Ibid.

rankings for each are provided in the *Ventura County Rare Plants* and in the *Flora of Ventura County* to be published in 2006 by the author.

The large number of taxa on this list is the result of several factors:

1. Development in Ventura County has eliminated a majority of the natural vegetation in the southern half of the County, eliminating many occurrences of native plant species;
2. A number of taxa found nowhere else are present in Ventura County, local endemics, and several of these are listed as threatened or endangered by either the California Department of Fish and Game or the U.S. Fish and Wildlife Service;
3. Ventura County is geographically situated such that floral influences from the north, south, and east enter the County at its edges (limits of some species' ranges);
4. Anacapa and San Nicolas Islands support many species found only on the California Channel Islands, including island endemics;
5. Ventura County is topographically and climatically diverse, providing numerous habitats for uncommon and rare species; and
6. Botanical surveys have not been conducted systematically everywhere in the County. In other words, the flora of Ventura County is not fully understood or documented, and additional populations of a number of the plants listed below likely occur in the County, we just aren't aware of them yet. Regardless, significant collecting has occurred in the County over the last 150 years, and the author has a reasonably good understanding of the flora.

This list was compiled according to definitions under the California Environmental Quality Act (CEQA) under Initial Study Checklist Section 6, Subsections A and E. Projects reviewed under CEQA should consider impacts to one or more of the species included in this checklist as potentially significant. Generally, if a project would impact a population of one or more of the plants listed herein, that/those impact(s) should be considered significant unless substantial evidence is provided that may support an alternate conclusion.

What significance does a list of locally rare species have under CEQA?

The following answer is provided by John Buse, Esq., of the Environmental Defense Center of Ventura, California⁶. The CEQA Guidelines provide that a lead agency shall find that a project may have a significant effect on the environment if the project "... has the potential to ... reduce the number or restrict the range of an endangered, rare or threatened species ...". Guidelines §15065(a). In addition, the CEQA Guidelines Appendix G Environmental Checklist Form considers whether a project would "have a substantial adverse effect, either directly or through habitat modifications, on any species identified as a candidate, sensitive, or special status species in local or regional plans, policies, or regulations ...".

According to the CEQA Guidelines, a species is considered "rare" when either:

- (A) Although not presently threatened with extinction, the species is existing in such small numbers throughout all or a significant portion of its range that it may become endangered if its environment worsens; or
- (B) The species is likely to become endangered within the foreseeable future throughout all or a significant portion of its range and may be considered "threatened" as that term is used in the Federal Endangered Species Act. Guidelines §15380(b)(2).

⁶ Buse, John, Esq., Environmental Defense Center, memorandum to David Magney of CNPS dated 14 September 2002.

Table 2. Natural Diversity Database Element Ranking System

Global Ranking (G)	
G1	Less than 6 viable element occurrences (populations for species) OR less than 1,000 individuals OR less than 809.4 hectares (ha) (2,000 acres [ac]).
G2	6 to 20 element occurrences OR 809.4 to 4,047 ha (2,000 to 10,000 ac).
G3	21 to 100 element occurrences OR 3,000 to 10,000 individuals OR 4,047 to 20,235 ha (10,000 to 50,000 ac).
G4	Apparently secure; this rank is clearly lower than G3 but factors exist to cause some concern (i.e. there is some threat, or somewhat narrow habitat).
G5	Population or stand demonstrably secure to ineradicable due to being commonly found in the world.
GH	All sites are historic ; the element has not been seen for at least 20 years, but suitable habitat still exists.
GX	All sites are extirpated ; this element is extinct in the wild.
GXC	Extinct in the wild; exists in cultivation.
G1Q	The element is very rare, but there is a taxonomic question associated with it.
Subspecies Level	
Subspecies receive a T-rank attached to the G-rank. With the subspecies, the G-rank reflects the condition of the entire <u>species</u> , whereas the T-rank reflects the global situation of just the <u>subspecies</u> or <u>variety</u> . For example: <i>Chorizanthe robusta</i> var. <i>hartwegii</i> . This plant is ranked G2T1. The G-rank refers to the whole species range (i.e. <i>Chorizanthe robusta</i> , whereas the T-rank refers only to the global condition of var. <i>hartwegii</i> .	
State Ranking (S)	
S1	Less than 6 element occurrences OR less than 1,000 individuals OR less than 809.4 ha (2,000 ac). S1.1 = very threatened S1.2 = threatened S1.3 = no current threats known
S2	6 to 20 element occurrences OR 3,000 individuals OR 809.4 to 4,047 ha (2,000 to 10,000 ac). S2.1 = very threatened S2.2 = threatened S2.3 = no current threats known..
S3	21 to 100 element occurrences OR 3,000 to 10,000 individuals OR 4,047 to 20,235 ha (10,000 to 50,000 ac). S3.1 = very threatened S3.2 = threatened S3.3 = no current threats known
S4	Apparently secure within California; this rank is clearly lower than S3 but factors exist to cause some concern (i.e. there is some threat, or somewhat narrow habitat). NO THREAT RANK.
S5	Demonstrably secure to ineradicable in California. NO THREAT RANK.
SH	All California sites are historic ; the element has not been seen for at least 20 years, but suitable habitat still exists.
SX	All California sites are extirpated ; this element is extinct in the wild.

Notes: 1. Other considerations used when ranking a species or natural community include the pattern of distribution of the element on the landscape, fragmentation of the population/stands, and historical extent as compared to its modern range. It is important to take a bird's eye or aerial view when ranking sensitive elements rather than simply counting element occurrences.

2. Uncertainty about the rank of an element is expressed in two major ways: by expressing the rank as a range of values (e.g., S2S3 means the rank is somewhere between S2 and S3), and by adding a ? to the rank (e.g. S2?). This represents more certainty than S2S3, but less than S2. (CNDDDB 2002.)

Species already listed under the California or federal ESA shall be presumed to be endangered, rare, or threatened. Guidelines §15380(c). A species not currently listed shall nevertheless be considered to be endangered, threatened, or rare if it meets the criteria in the CEQA definitions of “endangered” or

“rare”. The term “sensitive” species, which appears in the Appendix G checklist, is not defined in CEQA.

If a species is considered locally rare due to its limited occurrence within a political boundary, such as the County of Ventura, and if the species’ local population constitutes a significant portion of its range, the species must be considered a rare species under CEQA. The mere placement of a species on a list of locally rare species is probably not enough to meet the CEQA criteria for endangered, threatened, or rare species. However, if the list contains some additional explanation indicating why the species meets the CEQA criteria, such as the fact that the local population constitutes a significant portion of the species’ range, the list should provide substantial evidence of rarity.

If the CEQA criteria are satisfied, it is irrelevant that a species is relatively common in other locations. For example, the Pacific Coast populations of the Snowy Plover are listed as threatened under the federal ESA, despite the fact that inland populations are relatively common and are not protected. The existence of the non-listed populations does not diminish the Snowy Plover’s status as a endangered, threatened, or rare species under CEQA. By extension, if the Pacific Coast populations of the Snowy Plover were not listed as threatened, these populations would still be considered endangered, threatened, or rare under CEQA. Accordingly, the special status for Snowy Plover in Ventura County under CEQA would still apply even if Snowy Plover was relatively common in, for example, Mono County. Assertions implying that a species necessarily does not warrant inclusion on a list of locally rare species if it is common elsewhere in California simply because it occurs rarely in Ventura County within a political boundary are incorrect. As the Snowy Plover example indicates, there will be instances when a locally rare species must be considered rare under CEQA despite the species’ common occurrence elsewhere in California.

Snowy Plover on the Pacific Coast is protected under the federal ESA based on the concept of a “distinct population segment” (DPS). Something similar to the DPS concept could be used to determine whether a locally rare species is, in fact, endangered, threatened, or rare under CEQA. The federal ESA allows a DPS, defined according to geographic or reproductive isolation, to be treated as a “species”. Therefore, as in the Snowy Plover example, a DPS can be listed even though the populations of the taxonomic species are common elsewhere. CEQA does not preclude use of the DPS concept to assist in understanding whether a species is endangered, threatened, or rare based on its local rarity; on the contrary, the CEQA Guidelines definition of “rare” appears to invite the consideration of similar circumstances that would inform the determination of a DPS under the federal ESA.

Under CEQA, lead agencies have considerable discretion in determining whether a species should be considered rare or sensitive. See, for example, the *State CEQA Guidelines* Appendix G checklist cited above, which indicates that lead agencies may designate candidate, sensitive, or special-status species in local or regional plans, policies, or regulations. A list of locally rare or sensitive species, if it is developed based on evidence that the local rarity meets the CEQA criteria for rarity, will effectively establish a rebuttable presumption of significance for species that may be adversely affected by a project. In this respect, a list of locally rare species as presented below will function in a manner similar to the threshold of significance that a lead agency may establish. CEQA requires, however, that thresholds of significance for general use in a lead agency’s environmental review process “must be adopted by ordinance, resolution, rule, or regulation, and developed through a public review process and be supported by substantial evidence.” Guidelines §15064.7. For a list of locally rare or sensitive species to function as a set of thresholds of significance, therefore, the list should be adopted through a public review process. Even if the list is not adopted through a public review process, it will establish substantial evidence of rarity if it is accompanied by additional information showing, for example, that the local occurrences of a listed species constitute a substantial portion of the species’ range.

CNPS believes that this list of locally rare plants meets the definitions of rarity, at least locally, to satisfy consideration under CEQA. This checklist is supported by substantial evidence in the files of the author and data obtained from public herbaria and knowledgeable local botanists. Many of the taxa listed in this checklist are also listed by CNPS as rare or sensitive statewide, as well as those taxa formally listed under the California and/or federal ESA.

This checklist is updated regularly based on new information on the Ventura County flora. Species are added or deleted from this list as the new data warrant; therefore, be sure to obtain the most up-to-date version of this checklist. For example, for this update, compared to the 3 August 2007 version, 9 taxa were added, 20 were dropped (listed at end of this list), 13 had their rarity status changed (usually lowered from Rare to Uncommon), and 2 taxa were added to the “expected to occur” list while 9 taxa were removed. Changes in nomenclature were also made, where appropriate. Future changes to this list will not likely be as dramatic as the status of the flora of Ventura County is now better understood after extensive searches of California public herbaria were conducted through the Jepson Herbarium on-line Consortium database.

The most up-to-date version can be downloaded (as a PDF) from the Channel Islands Chapter CNPS website at www.cnpsci.org, or by contacting the author directly. Please send your notes on corrections, errors, and plant populations/occurrences you are aware of that may not be on this checklist to the author: David Magney, P.O. Box 1346, Ojai, CA 93024-1346 or via email at [david\(at\)magney\(dot\)org](mailto:david(at)magney(dot)org). Also contact the author if you need any specific locality data on any particular taxon included in this checklist.

Checklist of Rare Plants

Scientific Name⁷

Abies lowiana (Gordon & Glendinning) E. Murray
Abronia maritima Nutt. ex S. Watson X *A. umbellata* Lam.
Abronia maritima Nutt. ex S. Watson
Abronia pogonantha Heimerl
Abronia turbinata Torr. ex S. Watson
Abronia villosa S. Watson var. *aurita* (Abrams) Jeps.
Acanthomintha obovata var. *cordata* Jokerst
Acanthoscyphus [*Oxytheca*] *parishii* (Parry) Small var. *parishii*
Achnatherum aridum (M.E. Jones) Barkworth
Achnatherum occidentale (Thurber) Barkworth ssp. *occidentalis*
Achnatherum occidentale ssp. *pubescens* (Vasey) Barkworth
Achnatherum parishii (Vasey) Barkworth
Achnatherum thurberianum (Piper) Barkworth
Achyrachaena mollis Schauer
Adenostoma sparsifolium Torrey
Agoseris elata (Nuttall) E. Greene
Agoseris heterophylla var. *cryptopleura* Greene
Agrostis exarata Trin.

Common Name⁸

California White Fir (U) LPNF
Hybrid Sand-verbena (R)
Red or Sticky Sand-verbena (U) CNPS 4
Desert Sand-verbena (R)
Turbinate Sand-verbena (R)
Woolly Sand-verbena (R)
Heartleaf Thornmint (U)
Parish's *Oxytheca* (R) CNPS 4.2
Mormon Needlegrass (R)
Western Needlegrass (R)
Elmer Needlegrass (R)
Parish Needlegrass (R)
Thurber Needlegrass (R)
Blow-Wives (U)
Red Shank, Ribbon-bush (U)
Tall Mountain Dandelion (R)
Mountain Dandelion (U)
Western or Spike Bentgrass (U)

⁷ Scientific name: The complete scientific name is provided for each taxon and consists of the genus, species, and author (person who formally described and named the plant). Underlined entries indicate taxa found only on the Channel Islands (Anacapa or San Nicolas Islands).

⁸ Common names are given for all taxa, many of which are invented by the author as no common name has been identified otherwise. “R”, “U”, “Limits”, or “Type” in parentheses indicated the category of rarity: R = rare (formally listed by USFWS, CDFG, CNPS, or with 5 or fewer occurrences in Ventura County); U = uncommon (with 6 to 10 occurrences in Ventura County); Limits = indicate taxon reaches its distribution limits in Ventura County; Type = type locality is within Ventura County.

Scientific Name

Agrostis hallii Vasey
Agrostis pallens Trin.
Agrostis stolonifera var. *palustris* (Hudson) Pers.
Alisma plantago-aquaticum L.
Allium amplexans Torrey
Allium cratericola Eastw.
Allium denticulatum (Traub) D. McNeal
Allium diabloense (Traub) D. McNeal
Allium haemaetochiton S. Watson
Allium howellii var. *clokeyi* Traub
Allium lacunosum var. *davisiae* (M.E. Jones) D. McNeal
Allium lacunosum S. Watson var. *lacunosum*
Allium monticola Davidson
Allium parryi S. Watson
Allium parvum Kellogg
Allium peninsulare Lemmon var. *peninsulare*
Allium praecox Brandege
Allium sanbornii Alph. Wood var. *sanbornii*
Allium tribracteatum Torrey
Allium vineale L.
Allophyllum divaricatum (Nuttall) A.D. Grant & V. Grant
Allophyllum gilioides (Bentham) A.D. Grant & V. Grant ssp. *gilioides*
Alnus incana ssp. *tenuifolia* (Nuttall) Breitung
Alopecurus carolinianus Walter
Alopecurus saccatus Vasey
Amaranthus blitoides S. Watson
Amaranthus californicus (Moq.) S. Watson
Amaranthus palmeri S. Watson
Amaranthus powellii ssp. *bouchenii* (Thell.) Costea & Carretero
Amaranthus powellii S. Watson ssp. *powellii*
Ambrosia chamissonis (Less.) E. Greene
Ambrosia confertiflora DC.
Ambrosia salsola var. *fasiculata* (A. Nelson) Stother & B.G. Baldwin
Ambrosia salsola (T.&G. Ex G.) Stother & B.G. Baldwin var. *salsola*
Amelanchier alnifolia var. *pumila* (Nuttall) Nelson
Amelanchier pallida E. Greene
Amelanchier utahensis Koehne
Ammannia coccinea Rottb.
Amsinckia douglasiana A. DC.
Amsinckia menziesii (Lehm.) Nelson & J.F. Macbr. var. *menziesii*
Amsinckia spectabilis Fischer & C. Meyer var. *spectabilis*
Amsinckia tessellata Gray var. *tessellata*
Amsinckia tessellata var. *gloriosa* (Suksd.) Hoover
Ancistrocarphus filagineus Gray
Andropogon glomeratus var. *pumilus* Vasey ex Dewey
Andropogon glomeratus var. *scabriglumis* C.S. Campbell
Androsace elongata ssp. *acuta* (E. Greene) G. Robb.
Anisocoma acaulis Torrey & A. Gray
Antennaria dimorpha (Nuttall) Torrey & A. Gray
Antirrhinum coulterianum Bentham ssp. *coulterianum*
Antirrhinum nuttallianum Benth. ssp. *nuttallianum*
Antirrhinum nuttallianum ssp. *subsessile* (A. Gray) D. Thompson
Antirrhinum ovatum Eastwood
Aphanes occidentalis (Nuttall) Rydb.
Aphanisma blitoides Moq.
Apocynum androsaemifolium L.

Common Name

Hall's Bentgrass (R)
Thinggrass (R)
Creeping Bentgrass (U)
Common or Broadleaf Water-plantain (R)
Narrowleaf Onion (R)
Cratered Onion (R)
Dentate Fringed Onion (R)
Diablo Onion (U)
Red-skinned Onion (U)
Mount Pinos Onion (R, Type) CNPS 1B
Davis Onion (R, W Limits)
Pitted Onion (R)
Mountain Onion (R)
Parry Fringed Onion (R)
Small Onion (R)
Peninsular Onion (R)
Early Onion (R)
Sanborn Onion (R)
Three-bracted Onion (R)
Wild Garlic (R)
Divaricate Allophyllum (R)
Stragglng Gilia (U)
Mountain Alder (R, Disjunct, S Limits)
Carolina Foxtail (R)
Pacific Foxtail (R)
Prostrate Amaranth (U)
California Amaranth (R)
Palmer Amaranth (U)
Bouchenl Amaranth (R)
Powell Amaranth (U)
Beach Bur (U)
Weak-leaved Burweed or Bur-sage (R)
White Burrobrush (R)
Burrobrush (R)
Alderleaf Service-berry (R)
Western or Pallid Service-berry (R, Type)
Utah Service-berry (R)
Long-leaved or Purple Ammannia (R)
Douglas Fiddleneck (R)
Common or Menzeis Fiddleneck (U)
Showy Fiddleneck (U)
Devil's Lettuce, Tessellate Fiddleneck (R)
Glorious Fiddleneck (R)
Woolly Fishhooks (U)
Bushy Bluestem (R)
Southwestern Bushy Bluestem (U)
Rock-jasmine (R)
Scale Bud (U)
Low Everlasting (R)
White Snapdragon (U)
Nuttall Snapdragon (R)
Nuttall Snapdragon (R)
Oval-leaved Snapdragon (R)
Dew-cup, Lady's Mantle (R)
Aphanisma (R)
Bitter Dogbane (U)

<u>Scientific Name</u>	<u>Common Name</u>
<i>Apocynum Xmedium</i> E. Greene (A. <i>androsaemifolium</i> ssp. <i>a.</i> var. <i>incanum</i> X A. <i>cannabinum</i> var. <i>hypericifolium</i>)	Bitter Dogbane (R)
<i>Aquilegia eximia</i> Van Houtte ex Planchon	Van Houtte Columbine (R)
<i>Aquilegia formosa</i> var. <i>truncata</i> (Fischer & C.A. Meyer) Baker	Truncate Crimson Columbine (U)
<i>Arabis breweri</i> S. Watson var. <i>breweri</i>	Brewer Rock Cress (R, S Limits)
<u><i>Arabis hoffmannii</i> (Munz) Rollins</u>	<u>Hoffmann Rock Cress (R/E)</u>
<i>Arabis holboellii</i> var. <i>retrofracta</i> (Graham) Rydb.	Holboell Rock Cress (R)
<i>Arabis pulchra</i> M.E. Jones var. <i>gracilis</i> M.E. Jones	Desert Rock Cress (R, SW Limits)
<i>Arabis repanda</i> S. Watson var. <i>repanda</i>	Yosemite Rock Cress (U)
<i>Aralia californica</i> S. Watson	Elk Clover, Spikenard (R)
<i>Arbutus menziesii</i> Pursh	Pacific Madrone (R)
<i>Arceuthobium abietinum</i> (Engelm.) Hawksw. & Wiens	Dwarf Fir Mistletoe (R)
<i>Arceuthobium californicum</i> Hawksworth & Wiens	Sugar Pine Dwarf Mistletoe (R)
<i>Arceuthobium campylopodium</i> Engelm.	Western Dwarf Mistletoe (U)
<i>Arceuthobium cyanocarpum</i> Coulter & A. Nelson	Limber Pine Dwarf Mistletoe (R)
<i>Arceuthobium divaricatum</i> Engelm.	Pinyon Dwarf Mistletoe (U)
<i>Arceuthobium occidentale</i> Engelm.	Foothill Pine Dwarf Mistletoe (R)
<i>Arctostaphylos canescens</i> Eastw.	Hoary Manzanita (R)
<i>Arctostaphylos glandulosa</i> Eastw. X.A. <i>glauca</i> Lindley	Eastwood-Bigberry Manzanita Hybrid (R)
<i>Arctostaphylos glandulosa</i> ssp. <i>adamsii</i> (Munz) Munz	Adams Eastwood Manzanita (R)
<i>Arctostaphylos glandulosa</i> ssp. <i>cushingiana</i> (Eastw.) Keeley, Vasey & Parker	Cushing's Eastwood Manzanita (R)
<i>Arctostaphylos patula</i> Greene	Greenleaf Manzanita (R)
<i>Arctostaphylos pungens</i> H.B.K.	Pungent Manzanita (U)
<i>Aristida adscensionis</i> L.	Sixweeks Threeawn Grass (R)
<i>Aristida divaricata</i> Humb. & Bonpl. ex Willd.	Poverty Threeawn Grass (R)
<i>Aristida ternipes</i> var. <i>hamulosa</i> (Henrard) J.S. Trent	Hook Threeawn Grass (R)
<i>Artemisia ludoviciana</i> Nuttall ssp. <i>ludoviciana</i>	Silver or Western Mugwort (R)
<u><i>Artemisia nesiotica</i> Raven</u>	<u>Island Sagebrush (R)</u>
<i>Artemisia tridentata</i> ssp. <i>parishii</i> (Gray) H.M. Hall & Clements	Parish Great Basin Sagebrush (R, W Limits)
<i>Artemisia tridentata</i> ssp. <i>vaseyana</i> (Rydb.) Beetle	Vasey Great Basin or Mountain Sagebrush (R)
<i>Arthrocnemum [Salicornia] subterminalis</i> (Parish) Standley	Common or Parish Glasswort (R)
<i>Asclepias erosa</i> Torrey	Desert Milkweed (R)
<i>Asclepias vestita</i> Hook. & Arn.	Woolly Milkweed (R)
<i>Aspidotis californica</i> (Hooker) Nuttall ex Copeland	California Lace Fern (U)
<i>Asplenium vespertinum</i> Maxon	Western Spleenwort (R)
<i>Aster ascendens</i> Lindley	Long-leaved Aster (R)
<i>Aster chilensis</i> Nees	Common California Aster (U)
<i>Aster greatae</i> Parish	Greata's Aster (R)
<i>Aster lanceolatus</i> ssp. <i>hesperius</i> (Gray) Semple & Chmielewski	Siskiyou Aster (R)
<i>Aster lentus</i> E. Greene	Suisun Marsh Aster (R)
<i>Astragalus asymmetricus</i> E. Sheldon	Cockeyed Milkvetch (R)
<i>Astragalus brauntonii</i> Parish	Braunton Milkvetch (R) Listed Endangered
<i>Astragalus coccineus</i> Brandege	Scarlet Milkvetch (R)
<i>Astragalus curtipes</i> A. Gray	San Luis Obispo Milkvetch (R)
<i>Astragalus didymocarpus</i> Hook. & Arn. var. <i>didymocarpus</i>	Two-seeded Milkvetch (U)
<i>Astragalus didymocarpus</i> var. <i>dispermus</i> (A. Gray) Jepson	Disperse Two-seeded Milkvetch (R)
<i>Astragalus didymocarpus</i> var. <i>milesianus</i> (Rydb.) Jeps.	South Coast Two-seeded Milkvetch (R)
<i>Astragalus didymocarpus</i> var. <i>obispoensis</i> (Rydb.) Jeps.	San Luis Obispo Two-seeded Milkvetch (R)
<i>Astragalus douglasii</i> var. <i>parishii</i> (Gray) M.E. Jones	Parish Milkvetch (R)
<i>Astragalus filipes</i> Gray	Thread-leaved Locoweed (U)
<i>Astragalus gambelianus</i> E. Sheldon	Dwarf Locoweed (U)
<i>Astragalus lentiginosus</i> Hook. var. <i>diphysus</i>	Freckled Locoweed (R)
<i>Astragalus lentiginosus</i> Hooker var. <i>fremontii</i> (A. Gray) S. Watson	Fremont Spotted Locoweed (U)
<i>Astragalus lentiginosus</i> var. <i>nigricalycis</i> M.E. Jones	Black-sepaled Freckled Locoweed (R)
<i>Astragalus lentiginosus</i> var. <i>sierrae</i> M.E. Jones	Bear Valley Milkvetch (R, CNPS 1B)
<u><i>Astragalus leucolobus</i> M.E. Jones</u>	<u>Bear Valley Woollypod (R)</u>
<i>Astragalus leucopsis</i> Torrey var. <i>leucopsis</i>	Coast Rattleweed (R)

<u>Scientific Name</u>	<u>Common Name</u>
<i>Astragalus macgregorii</i> (Rydb.) Tidestr.	MacGregor Locoweed (R, Type)
<i>Astragalus macrodon</i> (Hook. & Arn.) Gray	Salinas Valley Milkvetch (R)
<i>Astragalus miguelensis</i> Greene	San Miguel Milkvetch (R)
<i>Astragalus nuttallii</i> (Torrey & A. Gray) J.T. Howell	Nuttall's Milkvetch (R)
<i>Astragalus oxyphysus</i> Gray	Robust Milkvetch (R)
<i>Astragalus pachypus</i> var. <i>jaegeri</i> Munz	Jaeger Milkvetch (R, N Limits)
<i>Astragalus pomonensis</i> M.E. Jones	Pomona Locoweed (R)
<i>Astragalus purshii</i> Douglas ex Hooker var. <i>purshii</i>	Pursh's Woollypod Milkvetch (R)
<i>Astragalus pycnostachyus</i> var. <i>lanosissimus</i> (Rydb.) Munz	Ventura Marsh Milkvetch (R/E)
<i>Astragalus traskiae</i> Eastwood	Trask Locoweed or Milkvetch (R)
<i>Astragalus trichopodus</i> (Nutt.) Gray var. <i>trichopodus</i>	Three-pod Milkvetch (U)
<i>Astragalus trichopodus</i> var. <i>lonchus</i> (M.E. Jones) Barneby	Three-pod Milkvetch (U)
<i>Astragalus whitneyi</i> Gray var. <i>whitneyi</i>	Whitney Locoweed (R)
<i>Astragalus whitneyi</i> var. <i>pinosus</i> Elmer	Mount Pinos Locoweed (R, Type)
<i>Athysanus pusillus</i> (Hook.) Greene	Dwarf Athysanus (U)
<i>Atriplex argentea</i> var. <i>mohavensis</i> M.E. Jones	Mojave Silverscale (R)
<i>Atriplex californica</i> Moq.	California Saltbush (U)
<i>Atriplex canescens</i> ssp. <i>linearis</i> (S. Watson) H.M. Hall & Clements	Narrowleaf Fourwing Saltbush (R)
<i>Atriplex coulteri</i> (Moq.) D. Dietr.	Coulter Saltbush (R)
<i>Atriplex lentiformis</i> (Torrey) S. Watson ssp. <i>lentiformis</i>	Big Saltbush, Quailbrush (U, W Limits)
<i>Atriplex leucophylla</i> (Moq.) D. Dietr.	Whiteleaf, Beach Saltbush or Seascale (U)
<i>Atriplex pacifica</i> Nelson	South Coast Saltbush (R)
<i>Atriplex polycarpa</i> (Torrey) S. Watson	Common Saltbush, Allscale (R)
<i>Atriplex serenana</i> var. <i>davidsonii</i> (Standley) Munz	Davidson Bractscale (R)
<i>Atriplex serenana</i> Nelson var. <i>serenana</i>	Bractscale (R)
<i>Atriplex subspicata</i> (Nutt.) Rydb.	Saline Saltscale (R)
<i>Atriplex triangularis</i> Willd.	Spearscale (U)
<i>Atriplex watsonii</i> Nelson	Matscale (R)
<i>Azolla filiculoides</i> Lam.	Duckweed Fern (U)
<i>Baccharis douglasii</i> DC.	Marsh Baccharis, Douglas False-willow (U)
<i>Baccharis emoryi</i> Gray	Emory Baccharis (R)
<i>Baccharis malibuensis</i> Beauchamp & Henrickson	Malibu Baccharis (R)
<i>Baccharis plummerae</i> Gray	Plummer Baccharis (U) CNPS List 4
<i>Barbarea orthoceras</i> Ledeb.	American Wintercress (U)
<i>Batis maritima</i> L.	Saltwort, Beachwort (R)
<i>Berberis dictyota</i> Jeps.	Dull-leaf or Jeps. Holly-leaved Barberry (R)
<i>Berberis pinnata</i> ssp. <i>insularis</i> Munz	Island Barberry (R)
<i>Berula erecta</i> (Huds.) Coville	Cutleaf Water-parsnip (R)
<i>Bidens frondosa</i> L.	Sticktight (R)
<i>Bidens laevis</i> (L.) Britton, Sterns & Pogg.	Bur-marigold (R)
<i>Bloomeria crocea</i> var. <i>montana</i> (E. Greene) Ingram	Mountain Goldenstars (U)
<i>Bolboschoenous maritimus</i> (L.) Palla var. <i>paludosus</i> (Nelson) Koyama	Saltmarsh Bulrush (R)
<i>Bolboschoenous maritimus</i> X <i>B. robustus</i>	Hybrid Bulrush (R)
<i>Bolboschoenous robustus</i> (Pursh) Soják, Čas. Nár.	Seashore Bulrush (R)
<i>Boschniakia strobilacea</i> Gray	California Ground Cone (R)
<i>Bothriochloa barbinodis</i> (Lagasca) Herter	Cane Bluestem (U)
<i>Botrychium simplex</i> E. Hitchc.	Least Moonwort, Little Grapefern (R)
<i>Bowlesia incana</i> Ruiz Lopez & Pavon	Hoary Bowlesia (U)
<i>Boykinia occidentalis</i> T. & G.	Santa Lucia Brookfoam (R)
<i>Boykinia rotundifolia</i> C. Parry	Roundleaved Boykinia (R)
<i>Brickellia californica</i> (T. & G.) Gray X <i>B. nevinii</i> Gray	California-Nevin Brickellbush Hybrid (R)
<i>Brickellia desertorum</i> Coville	Desert Brickellbush (R)
<i>Brickellia multiflora</i> Kellogg	Gum-leaved Brickellbush (R)
<i>Brodiaea coronaria</i> (Salisbury) Jepson ssp. <i>coronaria</i>	Crown Brodiaea (R)
<i>Brodiaea terrestris</i> ssp. <i>kernensis</i> (Hoover) Niehaus	Harvest Brodiaea (R)
<i>Bromus arizonicus</i> (Shear) Stebbins	Arizona Brome (U)

Scientific Name

Common Name

<i>Bromus laevipes</i> Shear	Woodland Brome (R)
<i>Bromus orcuttianus</i> (Shear) A. Hitchc.	Orcutt Brome (R)
<i>Bromus pseudolaevipes</i> Wagnon	Woodland Brome (R)
<i>Cakile edentula</i> (Bigelow) Hooker ssp. <i>edentula</i>	American Searocket (R)
<i>Calandrinia breweri</i> S. Watson	Brewer Calandrinia (R) CNPS List 4
<i>Calandrinia maritima</i> Nutt.	Seaside Redmaids (R) CNPS List 4
<i>Californica macrophylla</i> (H.& A.) Aldas., C. Navarro, P. Vargas, Ll. Saez & Aedo	Largeleaf Filaree (R)
<i>Callitriche marginata</i> Torrey	California Water-starwort, Wallow Starwort (R)
<i>Calocedrus decurrens</i> (Torrey) Florin	Incense Cedar (U)
<i>Calochortus catalinae</i> S. Watson	Catalina Mariposa Lily (U) CNPS List 4
<i>Calochortus clavatus</i> S. Watson ssp. <i>clavatus</i>	Club-haired Mariposa Lily (U) CNPS List 4
<i>Calochortus clavatus</i> ssp. <i>pallidus</i> (Hoover) Munz	Pale Yellow Mariposa Lily (R)
<i>Calochortus invenustus</i> E. Greene	Plain Mariposa Lily (U)
<i>Calochortus luteus</i> Lindley	Gold Nuggets (R)
<i>Calochortus palmeri</i> S. Watson var. <i>palmeri</i>	Palmer Mariposa Lily (R) CNPS List 1B
<i>Calochortus plummerae</i> Greene	Plummer Mariposa Lily (R) CNPS List 1B
<i>Calochortus weedii</i> var. <i>vestus</i> Purdy	Weed Mariposa Lily (R) CNPS List 1B
<i>Calyptridium monospermum</i> Greene	One-seeded Pussypaws (R)
<i>Calyptridium parryi</i> Gray var. <i>parryi</i>	Parry Calyptridium (U)
<i>Calyptridium umbellatum</i> (Torrey) Greene	Pussypaws (U)
<u><i>Calystegia macrostegia</i> ssp. <i>amplissima</i> Brummitt</u>	<u>Island Morning-glory (R)</u>
<i>Calystegia malacophylla</i> ssp. <i>tomentella</i> var. <i>deltoidea</i> (Greene) Munz	Tehachapi Morning-glory (R)
<i>Calystegia occidentalis</i> ssp. <i>fulcrata</i> (Gray) Brummitt	Western Morning-glory (R)
<i>Calystegia occidentalis</i> ssp. <i>occidentalis</i> var. <i>tomentella</i> (Greene) Brummitt	Woolly Western Morning-glory (R)
<i>Calystegia peirsonii</i> (Abrams) Brummitt	Peirson's Morning-glory (R)
<i>Calystegia sepium</i> ssp. <i>binghamiae</i> (Greene) Brummitt	Bingham Morning-glory (R) CNPS List 1A
<i>Calystegia soldanella</i> (L.) R. Br.	Beach Morning-glory (U)
<i>Camissonia brevipes</i> (A. Gray) Raven ssp. <i>brevipes</i>	Yellow Cups (R)
<i>Camissonia campestris</i> cf. ssp. <i>obispoensis</i> Raven	San Luis Obispo Sun-cup (R)
<u><i>Camissonia cheiranthifolia</i> (Sprengel) Raim ssp. <i>cheiranthifolia</i></u>	<u>Beach Primrose (R)</u>
<i>Camissonia cheiranthifolia</i> ssp. <i>suffruticosa</i> (S. Watson) Raven	Beach Primrose (U)
<i>Camissonia confusa</i> Raven	Confusing Primrose (R)
<i>Camissonia graciliflora</i> (Hooker & Arnott) Raven	Hill Sun-cup (R)
<i>Camissonia ignota</i> (Jepson) Raven	Small Primrose (U)
<i>Camissonia luciae</i> Raven	Santa Lucia Sun-cup (R)
<i>Camissonia micrantha</i> (Sprengel) Raven	Tiny Primrose (U)
<i>Camissonia pallida</i> (Abrams) Raven ssp. <i>pallida</i>	Pale Primrose (R)
<i>Camissonia palmeri</i> (S. Watson) Raven	Palmer Primrose (R)
<i>Cardamine breweri</i> S. Watson var. <i>breweri</i>	Brewer's Bitter-cress (R)
<i>Cardamine oligosperma</i> Torrey & Gray	Few-seeded Bitter-cress (R)
<i>Cardamine pachystigma</i> (S. Watson) Rollins var. <i>pachystigma</i>	Toothwort (R)
<i>Cardionema ramosissimum</i> (Weinm.) A. Mels. & J.F. Macbr.	Sand Mat (R)
<i>Carex abrupta</i> Mackenzie	Abrupt-beaked Sedge (R)
<i>Carex alma</i> L. Bailey	Sturdy Sedge (U)
<i>Carex athrostachya</i> Olney	Slender-beaked Sedge (R)
<i>Carex aurea</i> Nuttall	Golden-fruited Sedge (R)
<i>Carex barbarae</i> Dewey	Santa Barbara Sedge (R)
<i>Carex bolanderi</i> Olney	Bolander Sedge (R)
<i>Carex brainerdii</i> Mack.	Brainerd Sedge (R)
<i>Carex densa</i> L. Bailey	Dense Sedge (R)
<i>Carex douglasii</i> Boott	Douglas Sedge (R)
<i>Carex filifolia</i> var. <i>erostrata</i> Kük.	Short-grass Sedge (R)
<i>Carex fracta</i> Mackenzie	Fragile-sheathed Sedge (R)
<i>Carex globosa</i> Boott	Round-fruited Sedge (R)
<i>Carex hassei</i> L. Bailey	Hasse Sedge (R)
<i>Carex lanuginosa</i> Michaux	Woolly Sedge (R)

Scientific Name

Common Name

<i>Carex multicaulis</i> L. Bailey	Many-stemmed Sedge (R)
<i>Carex nebrascensis</i> Dewey	Nebraska Sedge (R)
<i>Carex pansa</i> L. Bailey	Sand Dune Sedge (R)
<i>Carex subfusca</i> W. Boott	Brown Sedge (U)
<i>Carex triquetra</i> Boott	Triangular-fruited Sedge (R)
<i>Castilleja angustifolia</i> (Nuttall) G. Don	Desert Indian Paintbrush (R)
<i>Castilleja applegatei</i> ssp. <i>disticha</i> (Eastw.) Chuang & Heckard	Eastwood Indian Paintbrush (R)
<i>Castilleja applegatei</i> ssp. <i>pinetorum</i> (Fern.) Chuang & Heckard	Wavyleaf Indian Paintbrush (R)
<i>Castilleja attenuata</i> (Gray) Chuang & Heckard	Valley Tassels (R)
<i>Castilleja densiflora</i> (Benth.) Chuang & Heckard ssp. <i>densiflora</i>	Dense-flowered Owl's Clover (R)
<i>Castilleja gyroloba</i> Pennell	Indian Paintbrush (R, Type)
<i>Castilleja lanata</i> ssp. <i>hololeuca</i> (Greene) Chuang & Heckard	White-felted Indian Paintbrush (R)
<i>Castilleja linariifolia</i> Benth.	Linaria-leaved Indian Paintbrush (R)
<i>Castilleja miniata</i> Hook. ssp. <i>miniata</i>	Great Red Indian Paintbrush (R)
<i>Castilleja minor</i> (A. Gray) A. Gray ssp. <i>minor</i>	Annual Indian Paintbrush (R)
<i>Castilleja minor</i> ssp. <i>spiralis</i> (Jeps.) Chuang & Heckard	Large-flowered Annual Indian Paintbrush (R)
<i>Castilleja mollis</i> Pennell	Soft-leaved Indian Paintbrush (R)
<i>Castilleja subinclusa</i> ssp. <i>franciscana</i> (Pennell) Chuang & Heckard	San Francisco Long-leaved Indian Paintbrush (R)
<i>Caulanthus amplexicaulis</i> S. Watson var. <i>amplexicaulis</i>	Clasping-leaved Jewelflower (R)
<i>Caulanthus anceps</i> Payson	Lemmon Mustard (R)
<i>Caulanthus californicus</i> (S. Watson) Payson	California Jewelflower (R) Fed-Endangered
<i>Caulanthus coulteri</i> var. <i>lemmonii</i> (S. Watson) Munz	Lemmon Jewelflower (R)
<i>Caulanthus heterophyllus</i> (Nutt.) Payson var. <i>heterophyllus</i>	Different-leaved Jewelflower (R)
<i>Caulanthus inflatus</i> S. Watson	Desert Candle (R)
<i>Ceanothus dentatus</i> T. & G.	Dentate Ceanothus (R)
<i>Ceanothus greggii</i> ssp. <i>vestitus</i> (Greene) McMinn	Mojave Ceanothus (U)
<i>Ceanothus megacarpus</i> var. <i>insularis</i> (Eastw.) Munz	Island Ceanothus (R)
<i>Ceanothus megacarpus</i> var. <i>pendulous</i> McMinn	Pendulous Bigpod Ceanothus (R)
<i>Ceanothus oliganthus</i> var. <i>sorediatus</i> (Hook. & Arn.) Hoover	Jim Brush (R)
<i>Ceanothus palmeri</i> Trel.	Palmer Ceanothus (U)
<i>Ceanothus papillosus</i> T. & G. ssp. <i>papillosus</i>	Wartleaf Ceanothus (U)
<i>Ceanothus papillosus</i> ssp. <i>roweanus</i> McMinn	Wartleaf Ceanothus (R)
<i>Ceanothus tomentosus</i> var. <i>olivaceous</i> Jepson	Woollyleaf Ceanothus (R)
<i>Celtis reticulata</i> Torrey	Netleaf Hackberry (R)
<i>Centaurium exaltatum</i> (Griseb.) W. Wright ex Piper	Great Basin Centaury (U)
<i>Centaurium venustum</i> (A. Gray) B.L. Robins. ssp. <i>venustum</i>	Beautiful Centaury, Canchalagua (R)
<i>Centromadia parryi</i> ssp. <i>australis</i> (Keck) B.G. Baldwin	Southern Tarplant (R)
<i>Centrostegia thurberi</i> var. <i>macrotheca</i>	Thurber Spineflower (R)
<i>Ceratophyllum demersum</i> L.	Hornwort, Coontail (R)
<i>Cercocarpus betuloides</i> var. <i>blancheae</i> (C. Schneider) Little	Island Mountain Mahogany (R)
<i>Cercocarpus ledifolius</i> var. <i>intermontanus</i> N. Holmgren	Cut-leaved Mountain Mahogany (U)
<i>Cercocarpus ledifolius</i> Nuttall var. <i>ledifolius</i>	Mountain Mahogany (R)
<i>Chaenactis artemisiifolia</i> (Gray) Gray	White Pincushion (U)
<i>Chaenactis fremontii</i> A. Gray	Desert Pincushion (R)
<i>Chaenactis glabriuscula</i> var. <i>heterocarpha</i> (A. Gray) H.M. Hall	Different-seeded Yellow Pincushion (R)
<i>Chaenactis glabriuscula</i> var. <i>lanosa</i> (DC.) H.M. Hall	Woolly Yellow Pincushion (U)
<i>Chaenactis glabriuscula</i> var. <i>megacephala</i> A. Gray	Big-flowered Yellow Pincushion (R)
<i>Chaenactis glabriuscula</i> var. <i>orcuttiana</i> (Greene) H.M. Hall	Woolly Yellow Pincushion (R) CNPS List 1B
<i>Chaenactis stevioides</i> Hook. & Arn.	Desert Pincushion (R)
<i>Chaenactis xantiana</i> Gray	Xantus Pincushion (U)
<i>Chamaesyce micromera</i> (Engelm.) Wooton & Standl.	Sonoran Sandmat (R)
<i>Chamaesyce ocellata</i> (Durand & Hilg.) Millsp. ssp. <i>ocellata</i>	Littleeye Spurge (R)
<i>Chamaesyce polycarpa</i> var. <i>hirtella</i> (Boiss.) Parish	Hairy Golondrina (R)
<i>Chamaesyce polycarpa</i> (Benth.) Millsp.	Golondrina (R)
<i>Chamaesyce serpens</i> (Kunth) Small	Matted Sandmat (R)
<i>Chamaesyce serpyllifolia</i> (Pers.) Small ssp. <i>serpyllifolia</i>	Thyme-leaved Spurge (R)

Scientific Name

Cheilanthes clevelandii D.C. Eaton.
Cheilanthes cooperae D.C. Eaton
Cheilanthes newberryi (D.C. Eaton) Domin
Chenopodium atrovirens Rydb.
Chenopodium fremontii S. Watson
Chenopodium pratericola Rydb.
Chorizanthe blakleyi Hardham
Chorizanthe clevelandii C. Parry
Chorizanthe douglasii Benth.
Chorizanthe membranacea Benth.
Chorizanthe parryi var. *fernandina* (S. Watson) Jepson
Chorizanthe procumbens Nutt.
Chorizanthe staticoides forma *bracteata* Goodman
Chorizanthe uniaristata T. & G.
Chrysothamnus nauseosus ssp. = *Ericameria nauseosa* var.
Chrysothamnus viscidiflorus (Hook.) Nutt. ssp. *viscidiflorus*
Cicuta douglasii (DC.) Coulter & Rose
Cirsium brevistylum Cronq.
Cirsium occidentale var. *venustum* (E. Greene) Jepson
Cirsium scariosum Nuttall
Clarkia affinis Lewis & Lewis
Clarkia cylindrica (Jepson) H. Lewis & M. Lewis ssp. *cylindrica*
Clarkia cylindrica ssp. *clavicarpa* W. Davis
Clarkia dudleyana (Abrams) J.F. Macbr.
Clarkia modesta Jeps.
Clarkia purpurea ssp. *viminea* (Douglas) Lewis & Lewis
Clarkia rhomboidea Douglas
Clarkia xantiana Gray ssp. *xantiana*
Claytonia exigua T. & G. ssp. *exigua*
Claytonia parviflora Hook. ssp. *parviflora*
Claytonia parviflora ssp. *viridis* (Davidson) J.M. Miller & Chambers
Claytonia rubra (J.T. Howell) Tidestrom ssp. *rubra*
Collinsia bartsiiifolia var. *davidsonii* (Parish) V. Newsom
Collinsia childii A. Gray
Collinsia parryi A. Gray
Collinsia parviflora Lindley
Collinsia torreyi var. *wrightii* (S. Watson) I.M. Johnston
Collomia grandiflora Lindley
Collomia tinctoria Kellogg
Comarostaphylis diversifolia ssp. *planifolia* (Jeps.) G. Wallace
Convolvulus simulans Perry
Conyza coulteri Gray
Cordylanthus maritimus Benth. ssp. *maritimus*
Cordylanthus rigidus ssp. *setiferus* Chuang & Heckard
Coreopsis calliopsidea (DC.) A. Gray
Cornus glabrata Bentham
Cornus sericea L. ssp. *sericea*
Crassula aquatica (L.) Schönl.
Crepis acuminata Nuttall
Crepis occidentalis Nuttall ssp. *occidentalis*
Crepis occidentalis ssp. *pumila* (Rydb.) Babcock & Stebbins
Cressa truxillensis Kunth var. *truxillensis*
Cryptantha barbiger (A. Gray) E. Greene
Cryptantha corollata (I.M. Johnston) I.M. Johnston
Cryptantha decipiens (M.E. Jones) A.A.Heller
Cryptantha echinella E. Greene

Common Name

Cleveland Lip-fern (R)
Mrs. Cooper Lip-fern (R)
Cotton Fern (R)
Pigweed (R)
Fremont Goosefoot (U)
Narrow-leaved Goosefoot (R)
Blakley's Spineflower (R)
Cleveland Spineflower (R)
Douglas Spineflower (R)
Pink Spineflower (R)
San Fernando Valley Spineflower (R) Endangered
Prostrate Spineflower (R)
Bracted Turkish Rugging (R, Type)
One-awned Spineflower (R)
taxonomic revisions
Yellow Rabbitbrush (R)
Western Water-hemlock (R)
Indian Thistle (R)
Red or Venus Thistle (U)
Elk Thistle (R)
Hairy Clarkia (R)
Cylindrical Godetia (R)
Cylindrical Godetia (R)
Dudley Godetia (R)
Modest Clarkia (R)
Large Purple Clarkia (R)
Rhomboid Clarkia (U)
Xantus Clarkia (R)
Small Miner's Lettuce (U)
Small-flowered Miner's Lettuce (U)
Green Small-flowered Miner's Lettuce (R)
Red Miner's Lettuce (U)
Davidson White Chinese Houses (R)
Child Blue-eyed Mary (R)
Parry Blue-eyed Mary (R)
Blue-eyed Mary, Blue Lips (R)
Wright Blue-eyed Mary (U)
Large-flowered Collomia (U)
Yellow-staining Collomia (R)
Simpleleaf Summer Holly (R)
Small-flowered Morning-glory (R)
Coulter Horseweed (R)
Saltmarsh Birds-beak (R) Listed E
Dark-tipped Rigid Bird's-Beak (U)
Leafy-stemmed Coreopsis (R)
Brown Dogwood (R)
American or Creek Dogwood (R)
Water Pigmy-Weed (R)
Long-leaved Hawksbeard (R)
Western Hawksbeard (U)
Western Hawksbeard (R)
Spreading Alkali-Weed (U)
Bearded Forget-Me-Not (R)
Crowned Forget-Me-Not (R, Type)
Gravel Forget-Me-Not (R)
Prickly Forget-Me-Not (U)

Scientific Name

Common Name

<i>Cryptantha flaccida</i> (Lehm.) E. Greene	Flaccid Forget-Me-Not (R)
<i>Cryptantha leiocarpa</i> (Fischer & C. Meyer) E. Greene	Coast Forget-Me-Not (R)
<i>Cryptantha maritima</i> (Greene) Greene	Seaside Forget-Me-Not (R)
<i>Cryptantha micrantha</i> (Torrey) I.M. Johnston	Eremocarya (R)
<i>Cryptantha micromeres</i> (A. Gray) E. Greene	Minute-flowered Forget (R)
<i>Cryptantha microstachys</i> (A. Gray) E. Greene	Tejon Forget-Me-Not (U)
<i>Cryptantha mohavensis</i> (Greene) Greene	Mojave Forget-Me-Not (R)
<i>Cryptantha nemaclada</i> E. Greene	Colusa Forget-Me-Not (U)
<i>Cryptantha nevadensis</i> A. Nelson & Kennedy var. <i>nevadensis</i>	Nevada Forget-Me-Not (R)
<i>Cryptantha nevadensis</i> A. Nelson & Kennedy var. <i>rigida</i> Brand	Rigid Nevada Forget-Me-Not (R)
<i>Cryptantha oxygona</i> (A. Gray) E. Greene	Sharp-not Forget-Me-Not (R)
<i>Cryptantha simulans</i> E. Greene	Pine Forget-Me-Not (U)
<i>Cryptantha torreyana</i> (A. Gray) E. Greene	Torrey Forget-Me-Knot (R)
<i>Cryptantha traskiae</i> I.M. Johnston	Trask Forget-Me-Not (R)
<i>Cuscuta californica</i> var. <i>breviflora</i> Engelm.	California Dodder (R)
<i>Cuscuta campestris</i> Yuncker	Western Field Dodder (R)
<i>Cuscuta denticulata</i> Engelm.	Desert Dodder (R)
<i>Cuscuta indecora</i> Choisy var. <i>indecora</i>	Pretty Dodder (R)
<i>Cuscuta indecora</i> var. <i>neuropetala</i> (Engelm.) Hitchc.	Pretty Dodder (R)
<i>Cuscuta salina</i> var. <i>major</i> Yuncker	Saltmarsh Dodder (U)
<i>Cycladenia humilis</i> var. <i>venusta</i> (Eastwood) Munz	Elegant Cycladenia (R)
<i>Cyperus acuminatus</i> Torrey & Hook.	Short-pointed Umbrella-sedge (R)
<i>Cyperus erythrorhizos</i> Muhlenb.	Red-root Flatsedge (R)
<i>Cyperus laevigatus</i> L.	Smooth Flatsedge (R)
<i>Cyperus odoratus</i> L.	Flatsedge (R)
<i>Cyperus squarrosus</i> L.	Awed Flatsedge (R)
<i>Cystopteris fragilis</i> (L.) Bernhardt	Brittle or Fragile Fern (R)
<i>Deinandra clementina</i> (Brandege) B.G. Baldwin	Island or Catalina Tarplant (R)
<i>Deinandra kelloggii</i> (E. Greene) E. Greene	Kellogg Tarplant (R)
<i>Deinandra minthornii</i> (Jepson) B.G. Baldwin	Santa Susana Tarplant (R, Type) Listed R
<i>Delphinium gracilentum</i> Greene	Coast Larkspur (R)
<i>Delphinium gypsophilum</i> Ewan ssp. <i>gypsophilum</i>	Gypsum Larkspur (R) CNPS List 4
<i>Delphinium inopinum</i> (Jeps.) H.F. Lewis & Epling	Unexpected Larkspur (R) CNPS List 1B
<i>Delphinium parryi</i> ssp. <i>blochmaniae</i> (Greene) F.H. Lewis & Epling	Dune Larkspur (R) CNPS List 1B
<i>Delphinium parryi</i> ssp. <i>maritimum</i> (Davidson) M.J. Warnock	Maritime Larkspur (R)
<i>Delphinium parryi</i> ssp. <i>purpureum</i> (F. Lewis & Epling) M.J. Warnock	Mount Pinos Larkspur (U) CNPS List 4
<i>Delphinium patens</i> ssp. <i>hepaticoideum</i> Ewan	Spreading Larkspur (R)
<i>Delphinium patens</i> ssp. <i>montanum</i> (Munz) Ewan	Mountain Spreading Larkspur (R)
<i>Delphinium umbracolorum</i> F.H. Lewis & Epling	Umbrella Larkspur (R) CNPS List 1B
<i>Deschampsia cespitosa</i> (L.) Beauv. ssp. <i>cespitosa</i>	Tufted Hairgrass (R)
<i>Deschampsia danthanooides</i> (Trin.) Munro ex Benth	Annual Hairgrass (R)
<i>Descurainia obtusa</i> ssp. <i>adenophora</i> (Wooton & Standley) Detl.	Desert Tansy Mustard (R)
<i>Descurainia pinnata</i> ssp. <i>glabra</i> (Wooton & Standl.) Detl.	Naken Western Tansy Mustard (R)
<i>Descurainia pinnata</i> ssp. <i>halicotorum</i> (Cockerell) Detl.	Western Tansy Mustard (R)
<i>Descurainia pinnata</i> ssp. <i>menziesii</i> (DC.) Detl.	Menzies Tansy Mustard (U)
<i>Dicentra ochroleuca</i> Engelm.	White Eardrops, Yellow Dicentra (R)
<i>Dicentra pauciflora</i> S. Watson	Few-flowered Bleeding Heart (R)
<i>Dichelostemma congestum</i> (Sm.) Kunth	Ookow (R)
<i>Dichondra occidentalis</i> House	Western Dichondra (R) CNPS List 4
<i>Dieteria</i> [<i>Machaeranthera</i>] <i>canescens</i> (Pursh) Torrey ssp. <i>canescens</i>	Hoary-Aster (U)
<i>Dithyrea maritima</i> (A. Davids.) Davidson	Beach Spectacle-pod (R)
<i>Dodecatheon alpinum</i> (A. Gray) E. Greene	Alpine Shooting Star (R)
<i>Dodecatheon clevelandii</i> ssp. <i>insulare</i> H.L. Thompson	Island Shooting Star (R)
<i>Dodecatheon clevelandii</i> ssp. <i>patulum</i> (Greene) Thompson	Lowland Padre Shooting Star (R)
<i>Dodecatheon clevelandii</i> ssp. <i>sanctarum</i> (E. Greene) Abrams	Cleveland Shooting Star (U)
<i>Downingia bella</i> Hoover	Hoover Downingia (R)

Scientific Name

Downingia pulchella (Lindl.) Torrey
Draba cuneifolia T. & G.
Draba verna L.
Dudleya abramsii ssp. *parva* (Rose & Davids.) J. Bartel
Dudleya blochmaniae (Eastw.) Moran ssp. *blochmaniae*
Dudleya caespitosa (Haw.) Britt. & Rose
Dudleya cymosa ssp. *marcescens* Moran
Dudleya cymosa ssp. *ovatifolia* (Britt.) Moran
Dudleya cymosa ssp. *pumila* (Rose) K. Nakai
Dudleya farinosa (Lindley) Britt. & Rose
Dudleya pulverulenta ssp. *arizonica* (Rose) Moran
Dudleya verityi N. Nakai
Dudleya virens (Rose) Moran
Eastwoodia elegans Brandegees
Echinochloa crus-gavonis (Kunth) Shultes
Echinodorus berteroi (Spreng.) Fassett
Eclipta prostrata (L.) L.
Elatine brachysperma Gray
Elatine californica Gray
Eleocharis acicularis (L.) Roemer & Schultes var. *acicularis*
Eleocharis bernardina Munz & Johnston
Eleocharis montevidensis Kunth
Eleocharis rostellata (Torrey) Torrey
Eleocharis suksdorfiana Beauv.
Elodea canadensis Rich.
Elymus glaucus ssp. *jepsonii* (Burt Davy) Gould
Elymus stebbinsii (Scribner & J.G. Smith) Gould
Elymus trachycaulus ssp. *subsecundus* (Link) Gould
Elymus trachycaulus (Link) Shinn. ssp. *trachycaulus*
Emmenanthe penduliflora var. *rosea* Brand
Encelia actoni Elmer
Encelia farinosa Torrey & A. Gray
Encelia frutescens (Gray) Gray
Encelia virginiana Nelson
Enemion occidentale (H. & A.) J.R. Drummond & Hutchinson
Ephedra californica S. Watson
Ephedra nevadensis S. Watson
Epilobium brachycarpum C. Presl
Epilobium canum ssp. *latifolium* (Hook.) Raven
Epilobium ciliatum ssp. *glandulosum* (Lehm.) P. Hoch & Raven
Epilobium densiflorum (Lindley) P. Hoch & Raven
Epilobium foliosum (T. & G.) Suksd.
Epilobium glaberrimum Barbey ssp. *glaberrimum*
Epilobium oregonense Hausskn.
Epilobium pygmaeum (Speg.) P. Hoch & Raven
Epilobium torreyi (S. Watson) P. Hoch & Raven
Epipactis gigantea Hook.
Equisetum arvense L.
Equisetum Xferrissii Clute
Equisetum hyemale var. *affine* (Engelm.) Calder & R.L. Taylor
Equisetum telmateia ssp. *braunii* (Milde) R.L. Hauke
Eragrostis mexicana (Hornem.) Link ssp. *mexicana*
Eragrostis mexicana var. *virescens* (C. Presl) Koch & E. Sanchez
Eragrostis pectinacea (Michx.) Nees var. *pectinacea*
Eremalche parryi (E. Greene) E. Greene ssp. *parryi*
Eriastrum densifolium (Benth.) Mason ssp. *densifolium*

Common Name

Flat-face Downingia (R)
Wedgeleaf Draba (R)
Vernal Whitlow-grass (R)
Conejo Live-forever (R) Listed T
Blochman Live-forever (R) CNPS List 1B
Sea Lettuce (R)
Marcescent Live-forever (R, Type) Listed T
Santa Monica Mtns. Live-forever (R) Listed T
Pygmy Live-forever (U)
Farinose Live-forever (R)
Chalky Live-forever (R)
Verity Live-forever (R) Listed T
Bright Green Live-forever (R)
Yellow Mock Aster (R)
Gulf Barnyard Grass (R)
Bur Head (R)
False Daisy (R)
Slender Waterwort (R)
California Waterwort (R)
Slender Spike-rush (U)
Few-flowered Club-rush (R)
Sand Spike-rush (R)
Beaked Spike-rush (R)
Suksdorf's Spike-rush (R)
Common Waterweed (R)
Jepson Blue or Woodland Wildrye (R)
Wheatgrass (R)
Slender Wheatgrass (R)
Slender Wheatgrass (R)
Rose Whispering Bells (R)
Acton Brittlebush (U)
Brittlebush, Incienso (R)
Brittlebush, Incienso (R)
Brittlebush (R)
Western Meadow-rue (R)
California Desert Tea, Cañatillo (R)
Nevada Ephedra or Mormon-tea (R)
Panicked Willow-herb (U)
Broad-leaved California Fuchsia (U)
Sticky Northern Willow-herb (R)
Dense-flowered Spike-primrose (R)
Leafy Spike-primrose (R)
Waxy Willow-herb (R)
Oregon Spike-primrose (R)
Smooth Spike-primrose (R)
Brook Spike-primrose (R)
Stream Orchid (U)
Common or Field Horsetail (U)
Ferris Horsetail (R)
Common or Giant Scouring Rush (U)
Giant Horsetail (U)
Mexican Lovegrass (R)
Orcutt Lovegrass (R)
Tufted Lovegrass (R)
Parry Mallow (R)
Woolly Star (R)

Scientific Name

Common Name

<i>Eriastrum densifolium</i> ssp. <i>mohavensis</i> (Craig) H. Mason	Mojave Woolly Star (R)
<i>Eriastrum eremicum</i> (Jeps.) H. Mason ssp. <i>eremicum</i>	Woolly Star (R)
<i>Eriastrum hooveri</i> (Jepson) H. Mason	Hoover Woolly Star (R) CNPS List 4
<i>Eriastrum pluriflorum</i> (A.A. Heller) H. Mason	Woolly Star (R)
<i>Ericameria arborescens</i> (A. Gray) E. Greene	Golden-fleece (R)
<i>Ericameria cooperi</i> (Gray) H.M. Hall var. <i>cooperi</i>	Cooper Goldenbush (R)
<i>Ericameria cuneata</i> (Gray) McClatchie var. <i>cuneata</i>	Wedgeleaf Goldenbush (U)
<i>Ericameria cuneata</i> var. <i>spatulata</i> (A. Gray) H.M. Hall	Spatulate-leaved Goldenbush (R)
<i>Ericameria ericoides</i> (Less.) Jeps. ssp. <i>ericoides</i>	Heatherleaf Goldenbush (U)
<i>Ericameria nauseosa</i> var. <i>speciosa</i> (Nutt.) Nesom & Baird	White-stemmed Rubber Rabbitbrush (R)
<i>Ericameria nauseosa</i> var. <i>bernardina</i> (Hall) Nesom & Baird	San Bernardino Rubber Rabbitbrush (R)
<i>Ericameria nauseosa</i> var. <i>oreophila</i> (Greene) Nesom & Baird	Common Rubber Rabbitbrush (U)
<i>Ericameria parryi</i> var. <i>aspera</i> (Greene) G.L. Newson & G.I. Baird	Parry Rabbitbrush (R)
<i>Ericameria teretifolia</i> (Durand & Hilg.) Jepson	Round-leaved Rabbitbrush (R)
<i>Ericameria palmeri</i> var. <i>pachylepis</i> (H.M. Hall) Nesom	Palmer Goldenbush (R)
<i>Ericameria pinifolia</i> (Gray) H.M. Hall	Pine Goldenbush (R)
<i>Erigeron breweri</i> var. <i>covillei</i> (Greene) G. Neswom	Fleabane Daisy (R)
<u><i>Erigeron glaucus</i> Ker-Gawler</u>	<u>Seaside Daisy (R)</u>
<i>Eriodictyon californicum</i> (Hooker & Arnott) Torrey	California Yerba Santa (R)
<i>Eriodictyon crassifolium</i> Benth. var. <i>crassifolium</i>	Thickleaf Yerba Santa (U)
<i>Eriodictyon traskiae</i> Eastw.	Trask Yerba Santa (R)
<i>Eriodictyon trichocalyx</i> A.A. Heller var. <i>trichocalyx</i>	Yerba Santa (U)
<u><i>Eriogonum arborescens</i> Greene</u>	<u>Arborescent Buckwheat (U)</u>
<i>Eriogonum covilleum</i> Eastw.	Coville Buckwheat (R)
<i>Eriogonum crocatum</i> Davidson	Conejo or Saffron Buckwheat (R, Type)
<i>Eriogonum deflexum</i> var. <i>baratum</i> (Elmer) Reveal	Flat-crown Buckwheat (R, Type)
<i>Eriogonum elegans</i> Greene	Elegant Buckwheat (R)
<i>Eriogonum gracillimum</i> S. Watson	Slender Buckwheat (R)
<u><i>Eriogonum grande</i> Greene var. <i>grande</i></u>	<u>Island Buckwheat (U)</u>
<u><i>Eriogonum grande</i> Greene var. <i>rubescens</i> Munz</u>	<u>Red Island Buckwheat (U)</u>
<u><i>Eriogonum grande</i> Greene var. <i>timorum</i> Reveal</u>	<u>San Nicolas Island Buckwheat (U)</u>
<i>Eriogonum heermannii</i> Durand & Hilg. var. <i>heermannii</i>	Heerman Buckwheat (U)
<i>Eriogonum hirtiflorum</i> S. Watson	Hairy-flowered Buckwheat (U)
<i>Eriogonum hooveri</i> (Reveal) Reveal	Hoover's Little Trumpet (U)
<i>Eriogonum inerme</i> (S. Watson) Jeps.	Unarmed Buckwheat (U)
<i>Eriogonum kennedyi</i> ssp. <i>alpigenum</i> (Munz & Johnston) Munz & Johnston	Alpine Kennedy Buckwheat (R) CNPS List 1B
<i>Eriogonum kennedyi</i> var. <i>austromontanum</i> Munz & I.M. Johnston	Southern Mountain Buckwheat (R) CNPS List 1B
<i>Eriogonum latifolium</i> Smith	Coast Buckwheat, Tibinagua (R)
<i>Eriogonum maculatum</i> A.A. Heller	Spotted Buckwheat (U)
<i>Eriogonum molestum</i> Greene	Pine Buckwheat (U)
<i>Eriogonum nudum</i> var. <i>westonii</i> (S. Stokes) J.T. Howell	Weston Barestem Buckwheat (U)
<i>Eriogonum nudum</i> var. <i>pubiflorum</i> Benth.	Hairy-flowered Barestem Buckwheat (U)
<i>Eriogonum ordii</i> S. Watson	Ord Buckwheat (U)
<i>Eriogonum parvifolium</i> var. <i>paynei</i> (Wolf ex Munz) Reveal	Payne Dune Buckwheat (U, Type)
<i>Eriogonum roseum</i> Durand & Hilg.	Rose Buckwheat (U)
<i>Eriogonum saxatile</i> S. Watson	Rock Buckwheat (U)
<i>Eriogonum spergulinum</i> ssp. <i>reddingianum</i> (Jones) J.T. Howell	Spurry Buckwheat (R)
<i>Eriogonum thurberi</i> Torrey	Thurber's Wild Buckwheat (R)
<i>Eriogonum trichopes</i> Torrey var. <i>trichopes</i>	Little Trumpet (U)
<i>Eriogonum umbellatum</i> var. <i>bahiiiforme</i> (T. & G.) Jepson	Sulphur-flower Buckwheat (R)
<i>Eriogonum umbellatum</i> var. <i>furcosum</i> Reveal	Sulphur Buckwheat (R)
<i>Eriogonum umbellatum</i> var. <i>subaridum</i> S. Stokes	Sulphur Buckwheat (R)
<i>Eriogonum vimineum</i> Benth.	Wicker Buckwheat (R)
<i>Eriogonum viridescens</i> A. Heller	Green Buckwheat (U)
<i>Eriogonum wrightii</i> var. <i>membranaceum</i> Jeps.	Sheathed Wright Buckwheat (R)
<i>Eriogonum wrightii</i> var. <i>trachygonum</i> (Torr. ex Benth.) Jeps.	Rough-node Bastardsage (R)

<u>Scientific Name</u>	<u>Common Name</u>
<i>Eriophyllum confertiflorum</i> var. <i>tanacetiflorum</i> (E. Greene) Jepson	Tansy-leaved Woolly Yarrow (R) CNPS 4.2
<i>Eriophyllum jepsonii</i> Greene	Jepson Woolly Yarrow (R)
<i>Eriophyllum staechadifolium</i> Lagasca	Seaside Woolly Sunflower (U)
<i>Eryngium vaseyi</i> J. Coulter & Rose	Coyote Thistle or Button-celery (R)
<u><i>Erysimum insulare</i> Greene ssp. <i>insulare</i></u>	<u>Island Wallflower (U)</u>
<i>Erysimum insulare</i> ssp. <i>suffrutescens</i> (Abrams) R.A. Price	Island Wallflower (R)
<i>Eschscholzia hypocoides</i> Bentham	Gypsum Poppy (R)
<i>Eschscholzia lemmonii</i> Greene ssp. <i>lemmonii</i>	Lemmon Poppy (R) CNPS List 4
<i>Eschscholzia minutiflora</i> S. Watson	Tiny-flowered Poppy (R)
<u><i>Eschscholzia ramosa</i> (Greene) Greene</u>	<u>Island Poppy (R)</u>
<i>Euphorbia palmeri</i> S. Watson var. <i>palmeri</i>	Wood Spurge (R)
<i>Euphorbia spathulata</i> Lam.	Spurge (R)
<i>Festuca rubra</i> L.	Red Fescue (R)
<i>Fimbristylis thermalis</i> S. Watson	Hot-Springs Fimbristylis (R)
<i>Forestiera pubescens</i> Nutt.	Desert Olive, Dwarf Swamp Privet (R)
<i>Fraxinus velutina</i> Torrey	Velvet or Arizona Ash (R)
<i>Fritillaria agrestis</i> E. Greene	Stink Bells (R) CNPS List 4
<i>Fritillaria biflora</i> Lindley var. <i>biflora</i>	Chocolate Lily, Mission Bells (U)
<i>Fritillaria ojaiensis</i> A. Davidson	Ojai Fritillary (R, Type) CNPS List 1B
<i>Fritillaria pinetorum</i> A. Davidson	Pine Fritillary (R)
<u><i>Galium angustifolium</i> ssp. <i>foliosum</i> (Hilend & Howell) Dempster & Stebb.</u>	<u>Channel Islands Bedstraw (R, Type)</u>
<i>Galium bifolium</i> S. Watson	Low Mountain Bedstraw (R)
<i>Galium californicum</i> Hooker & Arnott ssp. <i>californicum</i>	California Bedstraw (R)
<i>Galium cliftonsmithii</i> (Dempster) Dempster & Stebb.	Santa Barbara Bedstraw (R, CNPS 4)
<i>Galium trifidum</i> var. <i>pacificum</i> Wiegand	Coastal Bedstraw (R)
<i>Galium triflorum</i> Michaux	Sweet-scented Bedstraw (R)
<i>Gaura coccinea</i> Pursh	Wild Honeysuckle, Linda Tarde (R)
<i>Gayophytum diffusum</i> ssp. <i>parviflorum</i> H. Lewis & J. Szwedkowski	Diffuse Gayophytum (U)
<i>Gayophytum heterozygum</i> H. Lewis & J. Szwedkowski	Hybrid Gayophytum (R)
<i>Gayophytum racemosum</i> T. & G.	Black-foot Gayophytum (R)
<i>Geranium californicum</i> G. Jones & F. Jones	California Geranium (R)
<i>Geranium viscosissimum</i> Fischer & C. Meyer	Sticky Cranesbill (R)
<i>Gilia achilleifolia</i> Benth. ssp. <i>achilleifolia</i>	California or Yarrow-leaved Gilia (U)
<i>Gilia achilleifolia</i> Benth. ssp. <i>multicaulis</i> (Benth.) V. & A. Grant	Many-stemmed California Gilia (R)
<i>Gilia aliquanta</i> A. D. Grant & V. E. Grant	Puff-calyx Gilia (R)
<i>Gilia australis</i> (Mason & A. Grant) V. Grant & A. Grant	Southern Gilia (R)
<i>Gilia austro-occidentalis</i> (A.D. & V.E. Grant) A.D. & V.E. Grant	Southwestern Gilia (R)
<i>Gilia brecciarum</i> M.E. Jones ssp. <i>brecciarum</i>	Breccia Gilia (R)
<i>Gilia brecciarum</i> ssp. <i>jacens</i> (A. Grant & V. Grant) Day	Purple-flowered Breccia Gilia (R)
<i>Gilia capillaris</i> Kellogg	Miniature or Smooth-leaved Gilia (R)
<i>Gilia interior</i> (Mason & A. Grant) A. Grant	Slender-flowered Gilia (R)
<i>Gilia latiflora</i> ssp. <i>cuyamensis</i> A. & V. Grant	Cuyama Gilia (U) CNPS List 4
<i>Gilia latiflora</i> ssp. <i>davyi</i> (Milliken) A. & V. Grant	Davy Broad-flowered Gilia (R)
<i>Gilia latiflora</i> (Gray) Gray ssp. <i>latiflora</i>	Broad-flowered Gilia (R)
<i>Gilia leptantha</i> ssp. <i>pinetorum</i> A. & V. Grant	Gabriel Trumpet (U) CNPS List 4
<i>Gilia malior</i> A.G. Day & V.E. Grant	Scrub Gilia (R)
<i>Gilia minor</i> A.D. Grant & V.E. Grant	Little Gilia (U)
<i>Gilia modocensis</i> Eastwood	Modoc Gilia (R)
<u><i>Gilia nevinii</i> Gray</u>	<u>Nevin Gilia (U)</u>
<i>Gilia ochroleuca</i> ssp. <i>exilis</i> (Gray) A. & V. Grant	Volcanic Gilia (R)
<i>Gilia ochroleuca</i> M.E. Jones ssp. <i>ochroleuca</i>	Volcanic Gilia (R)
<i>Gilia sinuata</i> Benth.	Sinuate Gilia (R)
<i>Gilia splendens</i> H. Mason & A. Grant ssp. <i>splendens</i>	Splendid Gilia (U)
<i>Gilia tenuiflora</i> Benth. ssp. <i>tenuiflora</i>	Greater Yellowthroat Gilia (R)
<i>Gilia tetrabreccia</i> A. & V. Grant	Mount Piños Gilia (U)
<i>Gilia transmontana</i> (H. Mason & A. Grant) A. & V. Grant	Desert Gilia (U)

<u>Scientific Name</u>	<u>Common Name</u>
<i>Githopsis diffusa</i> A. Gray ssp. <i>diffusa</i>	Southern Bluecup (R)
<i>Grindelia camporum</i> var. <i>bracteosum</i> (J.T. Howell) M.A. Lane	Bracted Gumplant (U)
<i>Grindelia camporum</i> E. Greene var. <i>camporum</i>	Great Valley Gumplant (R)
<i>Grindelia hirsutula</i> Hook. & Arn. var. <i>hirsutula</i>	Hirsute Gumplant (U, Type)
<i>Grindelia stricta</i> var. <i>platyphylla</i> (Greene) M.A. Lane	Island Gumplant (R)
<i>Grindelia Xlatifolia</i> Kellogg ssp. <i>latifolia</i>	Coastal Gumplant (R)
<i>Gutierrezia sarothrae</i> (Pursh) Britton & Rusby	Broom Snakeweed, Matchweed (U)
<i>Hazardia detonsa</i> (Greene) Greene	Island Goldenbush (U) CNPS 4
<i>Helenium bigelovii</i> Gray	Bigelow Sneezeweed (U)
<i>Helenium puberulum</i> DC.	Rosilla (U)
<i>Helianthemum scoparium</i> Nutt.	Peak Rushrose (U)
<i>Helianthus gracilentus</i> Gray	Wild Mountain or Slender Sunflower (R)
<i>Hemizonella minima</i> (Gray) Gray	Hemizonella (U)
<i>Hesperevax sparsiflora</i> (A. Gray) E. Greene var. <i>sparsiflora</i>	Few-leaved Evax (R)
<i>Hesperochiron californicus</i> (Benth.) S. Watson	California Hesperochiron (R)
<i>Hesperochiron pumilus</i> (Griseb.) Porter	Hesperochiron (R)
<i>Hesperocnide tenella</i> Torrey	Western Nettle (R)
<i>Hesperoyucca whipplei</i> ssp. <i>percursa</i>	Our Lord's Candle (R)
<i>Heterotheca psammophila</i> B. Wagenkn.	Camphor Weed (R)
<i>Heterotheca sessiliflora</i> ssp. <i>camphorata</i> (Eastw.) Semple	Camphor Golden-Aster (R)
<i>Heuchera abramsii</i> Rydb.	Abrams Alumroot (R)
<i>Heuchera cespitosa</i> Eastw.	Alumroot (R)
<i>Heuchera elegans</i> Abrams	Urn-flowered Alumroot (R)
<i>Heuchera maxima</i> Greene	Island Alumroot (R)
<i>Hieracium albiflorum</i> Hooker	White-flowered Hawkweed (R)
<i>Hieracium argutum</i> Nuttall	Southern California Hawkweed (U)
<i>Hieracium horridum</i> Fries	Shaggy or Woolly Hawkweed (R)
<i>Hoffmannseggia glauca</i> (Ortega) Eifert	Pig-nut, Hog Potato (R)
<i>Hoita orbicularis</i> (Lindley) Rydb.	Round-leaved Hoita (R)
<i>Hollisteria lanata</i> S. Watson	Hollisteria (R)
<i>Holocarpa heermannii</i> (E. Greene) Keck	Heermann Tarplant (R)
<i>Holodiscus discolor</i> (Pursh) Maxim.	Oceanspray, Cream Bush (R)
<i>Holodiscus microphyllus</i> Rydb. var. <i>macrophyllus</i>	Rock Spiraea (R)
<i>Hordeum brachyantherum</i> Nevski ssp. <i>brachyantherum</i>	Meadow Barley (U)
<i>Hordeum depressum</i> (Scribner & J.G. Smith) Rydb.	Low Barley (R)
<i>Hordeum intercedens</i> Nevski	Vernal Barley (U)
<i>Horkelia cuneata</i> Lindley ssp. <i>cuneata</i>	Wedgeleaf Horkelia (R)
<i>Horkelia cuneata</i> ssp. <i>puberula</i> (Greene) Keck	Fuzzy Horkelia (R)
<i>Horkelia rydbergii</i> Elmer	Rydberg Horkelia (U)
<i>Hulsea heterochroma</i> Gray	Red-rayed Hulsea (R)
<i>Hulsea vestita</i> ssp. <i>gabrielensis</i> Wilken	San Gabriel Hulsea (R)
<i>Hutchinsia procumbens</i> (L.) Desv.	Desert Hutchinsia (U)
<i>Hydrocotyle verticillata</i> Thunb.	Marsh Pennywort (R)
<i>Hypericum formosum</i> var. <i>scouleri</i> (Hook.) J. Coulter	St. John's Wort (R)
<i>Imperata brevifolia</i> Vasey	Satintail (R)
<i>Iris missouriensis</i> Nuttall	Western Blue Flag [Iris] (U)
<i>Isocoma acradenia</i> (E. Greene) E. Greene	Desert Goldenbush (R)
<i>Isolepis cernua</i> (Vahl) Roemer & Schultes var. <i>cernua</i>	Low Clubrush (R)
<i>Isocoma menziesii</i> var. <i>sedoides</i> (E. Greene) G. Nesom	Coastal Goldenbush (U)
<i>Isoetes howellii</i> Engelm. var. <i>howellii</i>	Howell Quillwort (R)
<i>Isoetes howellii</i> var. <i>minima</i> (A.A. Eaton) N.E. Pfeiffer	Small Howell Quillwort (R)
<i>Isoetes nuttallii</i> A. Braun	Nuttall Quillwort (R)
<i>Ivesia santolinoides</i> A. Gray	Mousetail Ivesia (R)
<i>Ivesia saxosa</i> (Greene) B. Ertter	Five-finger Silverweed (R)
<i>Jaumea carnosa</i> (Less.) Gray	Fleshy Jaumea (U)
<i>Jensia yosemitana</i> (Parry ex A. Gray) B.G. Baldwin	Yosemite Tarplant (R)

<u>Scientific Name</u>	<u>Common Name</u>
<i>Jepsonia malvifolia</i> (Greene) Small	Island Jepsonia (R)
<i>Juglans californica</i> S. Watson var. <i>californica</i>	Southern California Black Walnut (U) CNPS List 4
<i>Juncus acutus</i> ssp. <i>leopoldii</i> (Parl.) Snogerup	Spiny Rush (U) CNPS List 4
<i>Juncus arcticus</i> ssp. <i>vallicola</i> (Rydb.) Lint	Valley Baltic Rush (R)
<i>Juncus balticus</i> Willd. var. <i>ater</i> (Rydb.) Snogerup	Rocky Mountain Rush (R)
<i>Juncus bufonius</i> L. var. <i>bufonius</i>	Common Toad Rush (R)
<i>Juncus bufonius</i> var. <i>occidentalis</i> F.J. Hermann	Western Toad Rush (R)
<i>Juncus confusus</i> Cov.	Colorado Rush (R)
<i>Juncus effusus</i> ssp. <i>pacificus</i> (Fern. & Wieg.) H.L. Lint	Pacific Rush (U)
<i>Juncus ensifolius</i> Wikström var. <i>ensifolius</i>	Swordleaf or Three-stamen Rush (R)
<i>Juncus macrandrus</i> Cov.	Long-anthered Rush (R)
<i>Juncus macrophyllus</i> Cov.	Large-leaf Rush (U)
<i>Juncus nevadensis</i> S. Watson	Sierra Rush (R)
<i>Juncus occidentalis</i> (Coville) Wiegand	Western Rush (R)
<i>Juncus oxymersis</i> Engelm.	Iris-leaved or Pointed Rush (R)
<i>Juncus patens</i> E. Meyer	Spreading Rush (R)
<i>Juncus phaeocephalus</i> var. <i>paniculatus</i> Engelm.	Brown-fruited Rush (R)
<i>Juncus rugulosus</i> Engelm.	Wrinkled Rush (R)
<i>Juncus textilis</i> Buchenau	Indian or Basket Rush (U)
<i>Juncus torreyi</i> Coville	Torrey Rush (R)
<i>Krascheninnikovia lanata</i> (Pursh) A.D.J. Meeuse & Smit	Winter Fat (R)
<i>Lagophylla ramosissima</i> Nutt. ssp. <i>ramosissima</i>	Branched Lagophylla, Common Hareleaf (R)
<i>Lastarriaea coriacea</i> (Goodman) Hoover	Lastarriaea (R)
<i>Lasthenia coronaria</i> (Nutt.) Ornduff	Crown-pappus Goldfields (R)
<i>Lasthenia ferrisiae</i> Ornduff	Ferris Goldfields (R)
<i>Lasthenia glabrata</i> ssp. <i>coluteri</i> (Gray) Ornduff	Rayless Goldfields (R)
<i>Lathyrus vestitus</i> ssp. <i>bolanderi</i> (S. Watson) C. Hitchc.	White-petaled Peavine (R)
<i>Lathyrus vestitus</i> ssp. <i>laetiflorus</i> (Greene) Broich	Pacific Peavine (R)
<i>Lathyrus vestitus</i> ssp. <i>laevicarpus</i> Broich	Pacific Peavine (U, Type)
<i>Lavatera assurgentiflora</i> Kellogg ssp. <i>assurgentiflora</i>	Malva Rose (R)
<i>Layia glandulosa</i> ssp. <i>lutea</i> Keck	Yellow Layia (U)
<i>Layia glandulosa</i> ssp. <i>rosea</i> Gray	Rose Layia (R, Type)
<i>Layia heterotricha</i> (DC.) Hook. & Arn.	Pale-yellow Layia (R) CNPS List 1B
<i>Layia pentachaeata</i> ssp. <i>albida</i> Keck	White Tidy Tips (R)
<i>Layia platyglossa</i> (Fischer & C. Meyer) A. Gray	Tidy Tips (U)
<i>Lemna gibba</i> L.	Gibbose Duckweed (R)
<i>Lemna minor</i> L.	Duckweed (R)
<i>Lemna minuscula</i> Herter	Tiny Duckweed (R)
<i>Lemna turionifera</i> Landolt	Duckweed (R)
<i>Lemna valdiviana</i> Philippi	Big Duckweed (U)
<i>Lepechinia calycina</i> (Bentham) Epling	Pitcher Sage (R)
<i>Lepechinia fragrans</i> (E. Greene) Epling	Fragrant Pitcher Sage (R)
<i>Lepechinia rossii</i> S. Boyd & O. Mistretta	Ross' Pitcher Sage (R)
<i>Lepidium campestre</i> (L.) R. Br.	Peppergrass (R)
<i>Lepidium dictyotum</i> A. Gray var. <i>dictyotum</i>	Veiny Peppergrass (R)
<i>Lepidium dictyotum</i> var. <i>acutidens</i> A. Gray	Short-toothed Peppergrass
<i>Lepidium lasiocarpum</i> Nutt. var. <i>lasiocarpum</i>	Hairy-pod Peppergrass (U)
<i>Lepidium oblongum</i> Small var. <i>oblongum</i>	Oblong Peppergrass (U)
<i>Lepidium strictum</i> (S. Watson) Rattan	Prostrate Peppergrass (R)
<i>Lepidium virginicum</i> var. <i>pubescens</i> (Greene) Thell.	Hairy Poorman's Peppergrass (R)
<i>Lepidium virginicum</i> var. <i>robinsonii</i> (Thell.) C.L. Hitchc.	Robinson's Poorman's Peppergrass (R, CNPS 1B.2)
<i>Leptodactylon pungens</i> ssp. <i>hallii</i> (Parish) H. Mason	Granite Prickly Phlox (R)
<i>Leptodactylon pungens</i> ssp. <i>pulchriflorum</i> (Brand) H. Mason	Granite Prickly Phlox (U)
<i>Leptosiphon androsaceus</i> Bentham	Baby Tears (R)
<i>Leptosiphon bicolor</i> Nuttall	Bicolored Linanthus (R)
<i>Leptosiphon breviculus</i> (A. Gray) J.M. Porter & L.A. Johnson	Short-stemmed Linanthus (R)

Scientific Name

Leptosiphon ciliatus (Benth.) Jepson
Leptosiphon liniflorus (Benth.) J.M. Porter & L.A. Johnson
Leptosiphon nudatus (E. Greene) J.M. Porter & L.A. Johnson
Leptosiphon pygmaeus ssp. *continentalis* (Raven) Porter & Johnson
Lessingia glandulifera var. *peirsonii* (J.T. Howell) Markos
Lessingia pectinata var. *tenuipes* (J.T. Howell) Markos
Lessingia tenuis (Gray) Cov.
Lewisia pygmaea (A. Gray) Robinson
Lewisia rediviva ssp. *minor* (Rydb.) Munz
Leymus cinereus A. Löve
Leymus Xhansanii Scribner
Lilium humboldtii ssp. *ocellatum* (Kellogg) Thorne
Lilium pardalinum Kellogg ssp. *pardalinum*
Limonium californicum (Boiss.) A.A. Heller
Limosella acaulis Sesse & Mocino
Linanthus bigelovii (Gray) Greene
Linanthus dianthiflorus (Benth.) Greene
Linanthus parryae (Gray) Greene
Linaria canadensis (L.) Dum.-Cours. var. *canadensis*
Linaria canadensis (L.) Dum.-Cours. var. *texana* (Scheele) Pennell
Linum lewisii Pursh
Lipocarpa micrantha (M. Vahl.) G.C. Tucker
Lithocarpus densiflorus (Hook. & Arn.) Rehder
Lithophragma bolanderi Gray
Lithophragma cymbalaria T. & G.
Lithophragma heterophyllum (Hook. & Arn.) T. & G.
Lithophragma parviflorum (Hook.) T. & G. var. *parviflorum*
Lobelia dunnii var. *serrata* (Gray) McVaugh
Loeflingia squarrosa Nuttall var. *squarrosa*
Loeseliastrum schottii S. Timbrook
Lomatium californicum (T. & G.) Mathias & Constance
Lomatium caruifolium (H. & A.) J.M. Coult. & Rose var. *caruifolium*
Lomatium dissectum var. *multifidum* (T. & G.) Mathias & Constance
Lomatium insulare (Eastw.) Munz
Lomatium lucidum (T. & G.) Jeps.
Lomatium macrocarpum (T. & G.) J. Coulter & Rose
Lomatium mohavense (Coult. & Rose) Coult. & Rose ssp. *mohavense*
Lomatium parvifolium (Hook. & Arn.) Jeps.
Lomatium utriculatum (T. & G.) Coulter & Rose
Lonicera interrupta Benth.
Lonicera subspicata Hooker & Arnott var. *subspicata*
Lotus argophyllus ssp. *argenteus* Dunkle
Lotus argophyllus ssp. *nivius* (E. Greene) Ottley
Lotus crassifolius (Benth.) Greene var. *crassifolius*
Lotus dendroideus (Greene) Greene var. *dendroideus*
Lotus dendroideus var. *veatchii* (Greene) Isley
Lotus hamatus Greene
Lotus heermanii (Durand & Hilg.) Greene var. *heermanii*
Lotus heermanii var. *orbicularis* (Gray) Isley
Lotus junceus (Benth.) Greene
Lotus micranthus Benth.
Lotus nevadensis (S. Watson) Greene var. *davidsonii* (Greene) Isley
Lotus nevadensis (S. Watson) Greene var. *nevadensis*
Lotus nuttallianus E. Greene
Lotus oblongifolius (Benth.) Greene var. *cupreus* (Greene) Ottley
Lotus oblongifolius (Benth.) Greene var. *oblongifolius*

Common Name

Whisker Brush (R)
Narrow Flaxflower (U)
Tehachapi Linanthus or Flaxflower (R)
Continental Pygmy Linanthus (R)
Peirson's Lessingia (R) CNPS List 4
Sticky Lessingia (R)
Spring Lessingia (U, Type) CNPS List 4
Pygmy Bitterroot (R)
Small Bitterroot (U)
Cespitose Wildrye (R)
Hansen's Wildrye (R)
Ocellated Humboldt Lily (U) CNPS List 4
Leopard Lily (R)
Marsh Rosemary (R)
Tufted Mudwort (R)
Bigelow Linanthus (R)
Ground Pink (U)
Parry Linanthus (R)
Toadflax (R)
Toadflax (U)
Western Blue Flax (U)
Tiny Lipocarpa (R)
Tanbark Oak (R)
Bolander Star (R)
Mission Star (U)
Hill Star (R)
Prairie Star (R)
Rothrock (Ojai) Lobelia (Type Locality only)
California Loeflingia (R)
Schott Loeseliastrum (R)
California Lomatium (R)
Alkali Desertparsley (R)
Carrotleaf Biscuitroot (R)
San Nicolas Island Lomatium (R)
Shiny Lomatium (R)
Large-fruited Lomatium (R)
Desert-parsley (U)
Small-leaved Lomatium (R)
Foothill Lomatium (U)
Chaparral Honeysuckle (U)
Santa Ynez Mountains Honeysuckle (R)
Silver Deervetch (R)
Santa Cruz Island Silverhosackia (R)
Broad-leaved Hosackia (U)
Island Broom (R)
San Miguel Island Deerweed (R)
Grab Hosackia or Lotus (R)
Heerman Lotus or Hosackia (R)
Heerman Lotus (R)
Lotus (R)
Tiny Lotus (R)
Suphur-flowered Hosackia (U)
Sierra Nevada Hosackia (R)
Nuttall's Lotus (R)
Stream Trefoil (R)
Narrow-leaved Hosackia, Stream Trefoil (U)

<u>Scientific Name</u>	<u>Common Name</u>
<i>Lotus scoparius</i> var. <i>brevialatus</i> Ottley	Deerweed (R)
<i>Lotus stipularis</i> (Benth.) Greene var. <i>stipularis</i>	Balsam Lotus (R)
<i>Ludwigia palustris</i> (L.) Elliot	Streamside Water Primrose (R)
<i>Ludwigia peploides</i> (Kunth) Raven ssp. <i>peploides</i>	Floating Seedbox (R)
<i>Lupinus adsurgens</i> E. Drew var. <i>adsurgens</i>	Silky Lupine (R)
<i>Lupinus adsurgens</i> var. <i>undulatus</i> C.P. Smith	Wavyleaf Silky Lupine (R)
<i>Lupinus agardhianus</i> Heller	Lupine (R)
<i>Lupinus albicaulis</i> Hooker	Whitestem Lupine (R)
<u><i>Lupinus albifrons</i> var. <i>douglasii</i> (Agardh) C.P. Smith</u>	<u>Island Silver Bush Lupine (R)</u>
<i>Lupinus andersonii</i> S. Watson	Anderson Lupine (R)
<i>Lupinus arboreus</i> Sims	Yellow Bush Lupine (U)
<i>Lupinus benthamii</i> Sims	Spider Lupine (R)
<i>Lupinus breweri</i> Gray var. <i>breweri</i>	Brewer Mat Lupine (U)
<i>Lupinus breweri</i> var. <i>bryoides</i> C.P. Smith	Alpine Brewer Lupine (U)
<u><i>Lupinus chamissonis</i> Eschsch.</u>	<u>Coastal Bush Lupine (R)</u>
<i>Lupinus concinnus</i> spp. <i>optatus</i> D. Dunn	Bajada Lupine (R)
<i>Lupinus concinnus</i> spp. <i>orcutti</i> (S. Watson) D. Dunn	Orcutt Bajada Lupine (R)
<i>Lupinus excubitus</i> M.E. Jones var. <i>excubitus</i>	Grape Soda Lupine (U)
<i>Lupinus excubitus</i> var. <i>austromontanus</i> (A.A. Heller) C.P. Smith	Southern Mountain Bush Lupine (U)
<i>Lupinus excubitus</i> var. <i>johnstonii</i> C.P. Smith	Johnston Bush Lupine (R)
<i>Lupinus formosus</i> var. <i>robustus</i> C.P. Smith	Summer Bush Lupine (R)
<i>Lupinus latifolius</i> J. Agardh var. <i>latifolius</i>	Broad-leaved Lupine (R)
<i>Lupinus latifolius</i> var. <i>parishii</i> C.P. Smith	Parish Broad-leaved Lupine (U)
<i>Lupinus lepidus</i> var. <i>confertus</i> (Kellogg) C.P. Smith	Prairie Lupine (U)
<i>Lupinus luteolus</i> Kellogg	Butter Lupine (U)
<i>Lupinus microcarpus</i> var. <i>densiflorus</i> (Benth) Jeps.	Densely Red-flowered Lupine (R)
<i>Lupinus microcarpus</i> var. <i>horizontalis</i> (A.A. Heller) Jeps.	Prostrate Red-flowered Lupine (U, Type)
<i>Lupinus nanus</i> Benth.	Small Lupine (R)
<i>Lupinus polyphyllus</i> Lindley var. <i>burkei</i>	Large-leaved Lupine (R)
<i>Lycium andersonii</i> Gray	Anderson Desert-thorn (R)
<u><i>Lycium californicum</i> Nuttall ex Gray</u>	<u>California Desert-thorn (R)</u>
<u><i>Lycium verrucosum</i> Eastwood</u>	<u>San Nicolas Island Desert-thorn (R, Type)</u>
<i>Lythrum californicum</i> T. & G.	California Loosestrife (R)
<i>Madia elegans</i> ssp. <i>vernalis</i> Keck	Vernal Tarplant or Madia (R)
<i>Madia elegans</i> ssp. <i>wheeleri</i> (Gray) Keck	Wheeler Tarplant or Madia (R)
<i>Madia exigua</i> (Smith) A. Gray	Small or Threadstem Tarplant or Madia (R)
<i>Madia sativa</i> Molina	Coast Tarplant (R)
<i>Maianthemum racemosum</i> ssp. <i>amplexicaule</i> (Nutt.) LaFrankie	False Solomon's Seal, Wild Lily of the Valley (R)
<i>Maianthemum stellatum</i> (L.) Link	False Solomon's Seal, Wild Lily of the Valley (R)
<i>Malacothamnus fasciculatus</i> var. <i>laxiflorus</i> (Gray) Kearney	Lax-flowered Bushmallow (R)
<i>Malacothamnus fremontii</i> (Torrey ex Gray) Torrey ex. Greene	Fremont Bushmallow (U)
<i>Malacothamnus marruboides</i> (D. & H.) Greene	Pink-flowered Bush[Globe]mallow (U)
<i>Malacothamnus nuttallii</i> Abrams	Nuttall Bushmallow (Type)
<i>Malacothrix californica</i> DC. var. <i>californica</i>	California Cliff-aster (U)
<i>Malacothrix clevelandii</i> Gray	Cleveland Cliff-aster (R)
<i>Malacothrix floccifera</i> (DC.) Blake	Woolly or Floccose Dandelion (R)
<u><i>Malacothrix foliosa</i> ssp. <i>crispifolia</i> W.S. Davis</u>	<u>Leafy Cliff-aster (R)</u>
<u><i>Malacothrix foliosa</i> Gray ssp. <i>foliosa</i></u>	<u>Leafy Cliff-aster (R)</u>
<u><i>Malacothrix foliosa</i> ssp. <i>polycephala</i> W.S. David</u>	<u>Many-headed Leafy Cliff-aster (R)</u>
<i>Malacothrix glabrata</i> A. Gray	Desert Dandelion (R)
<i>Malacothrix incana</i> (Nuttall) Torrey & A. Gray var. <i>incana</i>	Dunedelion (U) CNPS List 4
<u><i>Malacothrix junakii</i> W.S. Davis</u>	<u>Junak Dandelion (R, Type)</u>
<i>Malacothrix phaeocarpa</i> W.S. Davis	Brown-fruited Dandelion (R) CNPS List 4
<i>Malacothrix saxatilis</i> (Nuttall) T. & G. var. <i>saxatilis</i>	Cliff-aster (U)
<i>Malacothrix saxatilis</i> var. <i>altissima</i> (Greene) Ferris	Cliff-aster (R)
<i>Malacothrix saxatilis</i> var. <i>commutata</i> Ferris	Cliff-aster (U)

<u>Scientific Name</u>	<u>Common Name</u>
<i>Malacothrix saxatilis</i> var. <i>implicata</i> (Eastw.) Hall	Implicated Cliff-aster (U, Type)
<i>Malacothrix similis</i> Davis & Raven	Mexican Cliff-aster (R)
<i>Malacothrix squalida</i> Greene	Island Dandelion (R)
<i>Malvella leprosa</i> (Ortega) Krapov	Alkali-mallow, White-Weed (U)
<i>Marah macrocarpus</i> var. <i>major</i> (Dunn) Stocking	Island Man-root (R)
<i>Marsilea vestita</i> Hooker & Greville ssp. <i>vestita</i>	Hairy Pepperwort, Clover Fern (R)
<i>Meconella denticulata</i> E. Greene	Tiny Poppy (R)
<i>Melica californica</i> Scribner var. <i>californica</i>	California Melic Grass (R)
<i>Melica frutescens</i> Scribner	Melic Grass (R)
<i>Melica stricta</i> Bolander var. <i>albicaulis</i>	Whitestem Rock Melic Grass (R)
<i>Melica stricta</i> Bolander var. <i>stricta</i>	Nodding or Rock Melic Grass (R)
<i>Mentha arvensis</i> L.	Field Mint (R)
<i>Mentzelia affinis</i> Greene	Stickleaf (R)
<i>Mentzelia albicaulis</i> (Hook.) T. & G.	Whitestem Stickleaf (R)
<i>Mentzelia congesta</i> (Nuttall) T. & G. var. <i>congesta</i>	Congested Stickleaf (U)
<i>Mentzelia congesta</i> var. <i> davidsoniana</i> (Abrams) J.F. Macbr.	Ventana Stickleaf (R)
<i>Mentzelia dispersa</i> S. Watson	Scattered Stickleaf (R)
<i>Mentzelia gracilentia</i> T. & G.	Slender Stickleaf (R)
<i>Mentzelia micrantha</i> (Hook. & Arnott) T. & G.	Tiny-flowered Stickleaf (U)
<i>Mentzelia pectinata</i> Kellogg	Stickleaf (R)
<i>Mentzelia veatchiana</i> Kellogg	Veatch Stickleaf (R)
<i>Micropus californicus</i> Fischer & C. Meyer var. <i>californicus</i>	Slender Cottonweed (U)
<i>Microseris douglasii</i> (DC.) Schultz-Bip. ssp. <i>douglasii</i>	Douglas Microseris (R)
<i>Microseris douglasii</i> ssp. <i>tenella</i> (A. Gray) Chambers	Slender Douglas Microseris (R)
<i>Microseris elegans</i> A. Gray	Elegant Microseris (R)
<i>Mimulus androsaceus</i> Greene	Naked Sepal Monkeyflower (R)
<i>Mimulus aurantiacus</i> var. <i>parviflorus</i> (Greene) D.M. Thompson	Bush Monkeyflower (R)
<i>Mimulus bigelovii</i> (Gray) Gray var. <i>bigelovii</i>	Bigelow Monkeyflower (R)
<i>Mimulus bolanderi</i> Gray	Bolander Monkeyflower (R)
<i>Mimulus breweri</i> (E. Greene) Cov.	Brewer Monkeyflower (R)
<i>Mimulus congdonii</i> Robinson	Congdon Monkeyflower (R)
<i>Mimulus constrictus</i> (A.L. Grant) Pennell	Narrow-throated Monkeyflower (U)
<i>Mimulus flemingii</i> Munz	Island Bush Monkeyflower (R)
<i>Mimulus floribundus</i> Lindley	Floriferous Monkeyflower (U)
<i>Mimulus fremontii</i> (Benth.) Gray var. <i>fremontii</i>	Fremont Monkeyflower (U)
<i>Mimulus johnstonii</i> A.L. Grant	Johnston Monkeyflower (R)
<i>Mimulus longiflorus</i> var. <i>rutilus</i> A. Grant	Red Sticky Bush Monkeyflower (R)
<i>Mimulus moschatus</i> var. <i>longiflorus</i> A. Gray	Musk Monkeyflower (R)
<i>Mimulus parishii</i> E. Greene	Parish's Monkeyflower (R)
<i>Mimulus primuloides</i> Benth. var. <i>primuloides</i>	Primrose Monkeyflower (R)
<i>Mimulus puniceus</i> Nuttall	Red Bush Monkeyflower (R)
<i>Mimulus rattanii</i> Gray	Rattan's Monkeyflower (R)
<i>Mimulus rubellus</i> Gray	Little Redstem Monkeyflower (R)
<i>Mimulus suksdorfii</i> Gray	Suksdorf Monkeyflower (R)
<i>Mimulus tilingii</i> Regel	Creeping Monkeyflower (R)
<i>Minuartia douglasii</i> (Fenzl ex T. & G.) Mattf.	Douglas Sandwort (R)
<i>Minuartia pusilla</i> (S. Watson) Mattf.	Sandwort (R)
<i>Mirabilis multiflora</i> var. <i>pubescens</i> S. Watson	Froebel Four O'Clock (R)
<i>Monanthochloe littoralis</i> Engelm.	Shoregrass (R)
<i>Monardella breweri</i> Gray	Brewer Coyote Mint (U)
<i>Monardella hypoleuca</i> Gray ssp. <i>hypoleuca</i>	White-veined Coyote Mint (R)
<i>Monardella linioides</i> ssp. <i>oblonga</i> (Greene) Abrams	Flax-leaved Horsemint (R) CNPS List 1B
<i>Monardella undulata</i> Benth.	Curly-leaved Horsemint (R)
<i>Monolepis nuttalliana</i> (Schultes) E. Greene	Nuttall Monolepis, Poverty Weed (R)
<i>Monolopia lanceolata</i> Nuttall	Lanceleaf Hilltop Daisy (R)
<i>Monolopia major</i> DC.	Cupped Daisy (R)

Scientific Name

Common Name

<i>Montia chamissoi</i> (Ledeb. Ex Spreng.) Greene	Toad-Lily (R)
<i>Mucronea californica</i> Benth. var. <i>californica</i>	California Spineflower (R)
<i>Mucronea perfoliata</i> (Gray) A.A. Heller var. <i>perfoliata</i>	Perfoliate Spineflower (R)
<i>Muhlenbergia andina</i> (Nuttall) A. Hitchc.	Foxtail Muhly (R)
<i>Muhlenbergia asperifolia</i> (Nees & Meyen) Parodi	Scratchgrass (U)
<i>Muhlenbergia richardsonis</i> (Trin.) Rydberg	Mat Muhly (R)
<i>Muhlenbergia utilis</i> (Torrey) A. Hitchc.	Aparejo Grass (R)
<i>Muilla maritima</i> (Torrey) S. Watson	Common Muilla (U)
<i>Myosurus minimus</i> L.	Common Mousetails (R)
<i>Myrica californica</i> Chamisso	California Wax-Myrtle, Pacific Bayberry (R)
<i>Myriophyllum hippuroides</i> Torrey & A. Gray	Western Milfoil (R)
<i>Najas guadalupensis</i> (Sprengel) Magnus	Common Water-nymph, Southern Naiad (R)
<i>Nama californicum</i> (Gray) J.D. Bacon	Lemmon California Waterleaf (U)
<i>Navarretia atractyloides</i> (Benth.) Hook. & Arn.	Hollyleaf Skunkweed (R)
<i>Navarretia hamata</i> E. Greene ssp. <i>hamata</i>	Navarretia (R)
<i>Navarretia ojaiensis</i> Elvin, J.M. Porter & L.A. Johnson	Ojai Navarretia (U) CNPS List 1B.1
<i>Navarretia mellita</i> E. Greene	Sticky Navarretia (R)
<i>Navarretia peninsularis</i> Greene	Southern California Navarretia (R)
<i>Navarretia squarrosa</i> (Eschsch.) Hook. & Arn.	Downy Navarretia (R)
<i>Nemacladus capillaris</i> Greene	Common Nemacladus (R)
<i>Nemacladus glandulerus</i> var. <i>occidentalis</i> McVaugh	Western Sticky Nemacladus (R)
<i>Nemacladus gracilis</i> Eastw.	Slender Nemacladus (R)
<i>Nemacladus ramosissimus</i> Nuttall	Nuttall's Nemacladus (R)
<i>Nemacladus secundiflorus</i> G.T. Robbins	Secund Nemacladus (R)
<i>Nemacladus sigmoideus</i> G.T. Robbins	Thread Stem (R)
<i>Nemophila menziesii</i> var. <i>integrifolia</i> Parish	Baby Blue-eyes (R)
<i>Nemophila parviflora</i> Douglas ex Bentham var. <i>parviflora</i>	Smallflower Nemophila (R)
<i>Nemophila pulchella</i> var. <i>fremontii</i> (A.D.E. Elmer) Constance	Fremont Baby Blue-eyes (R)
<i>Nicotiana attenuata</i> Torrey	Coyote Tobacco (U)
<u><i>Nicotiana clevelandii</i> A. Gray</u>	<u>Cleveland Indian Tobacco (R)</u>
<i>Nicotiana quadrivalis</i> Pursh var. <i>quadrivalis</i>	Indian Tobacco (R)
<i>Nicotiana quadrivalis</i> Pursh var. <i>wallacei</i> (Gray) Mansf.	Wallace's Indian Tobacco (R)
<i>Nolina cismontana</i> Dice	Chaparral Bear-grass (R) CNPS List 1B
<i>Notholeana californica</i> D.C. Eaton	California Cloak Fern (R)
<i>Oenothera deltooides</i> ssp. <i>cognata</i> (Jepson) Klein	Birdcage Evening-primrose, Devil's Lantern (R)
<i>Oenothera elata</i> ssp. <i>hookeri</i> (Torrey & A. Gray) W. Dietr.	Hooker Coast Evening Primrose (R)
<i>Oenothera longissima</i> ssp. <i>clutei</i> (Nelson) Munz	Evening Primrose (R)
<i>Oligomeris linifolia</i> (M. Vahl) J.F. Macbr.	Narrowleaf Oligomeris (U)
<i>Opuntia basilaris</i> Engelm. & J. Bigelow var. <i>basilaris</i>	Beavertail Cactus (R)
<u><i>Opuntia littoralis</i> (Engelm.) Cockerell XO. <i>oricola</i> Philbr.</u>	<u>Coastal-Round-pad Prickly Pear Hybrid (R)</u>
<i>Opuntia oricola</i> Philbr.	Round-pad Prickly Pear (U)
<i>Opuntia parryi</i> Engelm.	Cane or Snake Cholla (R)
<i>Opuntia prolifera</i> Engelm.	Coastal Cholla (R)
<i>Opuntia Xvaseyi</i> (J. Coulter) Britton & Rose (<i>O. littoralis</i> X <i>phaeacantha</i>)	Mesa Prickly Pear (R)
<i>Orcuttia californica</i> Vasey	California Orcutt Grass (R)
<i>Orobanche bulbosa</i> (Gray) G. Beck	Chamise Broom-rape (U)
<i>Orobanche californica</i> ssp. <i>feudgei</i> (Munz) Heckard	California Sagebrush Broom-rape (R)
<i>Orobanche fasciculata</i> Nuttall	Clustered Broom-rape (U)
<i>Orobanche parishii</i> ssp. <i>brachyloba</i> Heckard	Short-lobed Broom-rape (R)
<i>Orobanche parishii</i> (Jeps.) Heckard ssp. <i>parishii</i>	Parish Broom-rape (R)
<i>Orobanche uniflora</i> L.	Naked Broomrape (R)
<i>Orobanche vallicola</i> (Jepson) Heckard	Hillside Broomrape (R)
<i>Orobanche valida</i> Jeps. ssp. <i>valida</i>	Rock Creek Broom-rape (R)
<i>Osmorhiza chilensis</i> H. & A.	Mountain Sweetroot (R)
<i>Oxalis albicans</i> ssp. <i>californica</i> (Abrams) G. Eiten	California White Wood Sorrel (R)
<i>Oxalis albicans</i> ssp. <i>pilosa</i> (Nuttall) G. Eiten	Hairy White Wood Sorrel (R)

Scientific Name

Oxytheca caryphylloides Parry
Oxytheca parishii var. *abramsii* (McGregor) Munz
Oxytheca perfoliata T. & G.
Oxytheca trilobata A. Gray
Packera breweri (Burt Davy) W.A. Weber & Löve
Panicum capillare ssp. *hillmanii* (Chase) Freckmann & Lelong
Papaver californicum Gray
Parietaria hespera var. *californica* B.D. Hinton
Parietaria hespera B.D. Hinton var. *hespera*
Parietaria pensylvanica Muhlenberg ex Willdenow
Parishella californica A. Gray
Parthenocissus vitaea (Knerr) Hitchc.
Paspalum distichum L.
Pectocarya heterocarpa I.M. Johnston
Pectocarya linearis ssp. *ferocula* (I.M. Johnston) Thorne
Pectocarya penicillata (Hook. & Arn.) A. DC.
Pectocarya setosa Gray
Pedicularis densiflora Hook.
Pedicularis semibarbata Gray
Pediomelum castoreum (S. Watson) Rydb.
Pellaea mucronata var. *californica* (Lemmon) Munz & I.M. Johnston
Penstemon grinnellii Eastwood var. *grinnellii*
Penstemon heterophyllus var. *australis* Munz & I.M. Johnston
Penstemon laetus Gray var. *laetus*
Penstemon speciosus Lindley
Pentachaeta fragilis Brandegee
Pentachaeta lyonii Gray
Perideridia gairdneri (Hook. & Arn.) Mathias ssp. *gairdneri*
Perideridia parishii ssp. *latifolia* (Gray) Chuang & Constance
Perideridia pringlei (J.M. Coulter & Rose) A. Nelson & J.F. Macbr.
Perityle emoryi Torrey
Phacelia affinis Gray var. *affinis*
Phacelia austromontana J.T. Howell
Phacelia bicolor Torrey ex S. Watson
Phacelia cicutaria E. Greene var. *cicutaria*
Phacelia cicutaria var. *hubbyi* (J.F. Macbr.) J.T. Howell
Phacelia ciliata Benth. var. *ciliata*
Phacelia cinerea Eastw.

Phacelia exilis (Gray) G.J. Lee
Phacelia grisea Gray
Phacelia humilis var. *dudleyi* J. Howell
Phacelia imbricata ssp. *patula* (Brand) Heckard
Phacelia minor (Harvey) Thellung
Phacelia mohavensis A. Gray
Phacelia mutabilis Greene
Phacelia oreopola Heckard ssp. *oreopela*
Phacelia ramosissima var. *austrolittoralis* Munz
Phacelia ramosissima var. *latifolia* (Torrey) Cronq.
Phacelia rattanii A. Gray
Phacelia viscida var. *albiflora* (Nuttall) A. Gray
Phalaris lemmonii Vasey
Phlox austromontana Coville
Phlox caespitosa Nuttall
Phlox diffusa Benth.
Phlox hoodii ssp. *canescens* (T. & G.) Wherry
Pholistoma membranaceum (Benth.) Constance

Common Name

Chickweed *Oxytheca* (R) CNPS List 4
Abrams *Oxytheca* (R, Type) CNPS List 1B
Perfoliate *Oxytheca* (R)
Three-lobed Spineflower (R)
Brewer Butterweed or Groundsel (U)
Hillman Witchgrass (U)
Wind or Fire Poppy (R)
California Pellitory (R)
Southwest Pellitory (U)
Pennsylvania Pellitory (R)
Parishella (R)
Woodbine (R)
Joint Dallis Grass or Knotgrass (R)
Two-faced *Pectocarya* (R)
Linear *Pectocarya* (U)
Winged *Pectocarya* (R)
Setose *Pectocarya* (U)
Indian Warrior (R)
Pine-woods Lousewort (U)
Desert Indian Breadroot (R)
California Birdsfoot Cliffbrake or Fern (R)
Grinnell Beardtongue (U)
Southern Mountain *Penstemon* (R)
Gay *Penstemon* (R)
Showy Beardtongue (R)
Fragile *Pentachaeta* (R)
Lyon's *Pentachaeta* (R) Listed Endangered
Gairdner Yampah (R)
Parish Yampah (R)
Adobe or Pringle Yampah (U) CNPS List 4
Rock Daisy (U)
Phacelia (R)
Low Phacelia (R)
Bicolored Phacelia (R)
Caterpillar Phacelia (U)
Hubby Caterpillar Phacelia (U)
Ciliate Phacelia (U)
Ashy Phacelia (R, Type) CNPS 1A
Transverse Range Phacelia (R) CNPS 4.3
White-flowered Phacelia (R)
Dudley Phacelia (R)
Mountain Phacelia (R)
Wild Canterbury Bell (R)
Mojave Phacelia (R) CNPS 4.3
Changeable Phacelia (R)
Mountain Phacelia (R)
South Coast Branching Phacelia (R) CNPS 4.3
Branching Phacelia (U)
Brand Phacelia (R)
White-flowered Viscid Phacelia (R)
Lemmon Canarygrass (R)
Spreading Phlox (R)
Rigid Mat Phlox (R)
Mat Phlox (R)
Fuzzy Hood Phlox (R)
White Fiesta Flower (R)

<u>Scientific Name</u>	<u>Common Name</u>
<i>Phoradendron pauciflorum</i> Torrey	Few-flowered Mistletoe (R)
<i>Phragmites australis</i> (Cav.) Steudel	Common Reed (R)
<i>Phyla nodiflora</i> (L.) E. Greene var. <i>nodiflora</i>	Common Frog-fruit (R)
<i>Phyllospadix scouleri</i> Hook.	Scouler Surf-grass (R)
<i>Phyllospadix torreyi</i> S. Watson	Torrey Surf-grass (R)
<i>Pickeringia montana</i> Nutt. var. <i>montana</i>	Chaparral Pea (R)
<i>Pilularia americana</i> A. Braun	American Pillwort (R)
<i>Pinus coulteri</i> D. Don	Coulter Pine (R)
<i>Pinus flexilis</i> E. James	Limber Pine (R)
<i>Pinus sabiniana</i> Douglas	Foothill or Gray Pine (R)
<i>Piperia elongata</i> Rydb.	Dense-flowered Rein Orchid (R)
<i>Piperia michaelii</i> (Greene) Rydb.	Michael Piperia (R) CNPS 4.2
<i>Piperia unalascensis</i> (Spreng.) Rydb	Slender-spire Orchid (R)
<i>Plagiobothrys acanthocarpus</i> (Piper) I.M. Johnston	Adobe Popcornflower (R)
<i>Plagiobothrys arizonicus</i> (Gray) Gray	Arizona Popcornflower (R)
<i>Plagiobothrys canescens</i> Benth.	Valley or Bracted Popcornflower (R)
<i>Plagiobothrys collinus</i> var. <i>fulvescens</i> (I.M. Johnston) Higgins	Popcornflower (R)
<i>Plagiobothrys collinus</i> var. <i>gracilis</i> (A. Gray) Higgins	<u>Slender California Popcornflower (R)</u>
<i>Plagiobothrys hispidulus</i> (E. Greene) I.M. Johnston	Hispid Popcornflower (R)
<i>Plagiobothrys tenellus</i> (Nuttall) A. Gray	Slender Popcornflower (R)
<i>Plagiobothrys undulatus</i> (Piper) I.M. Johnston	Undulate Popcornflower (R)
<i>Plantago elongata</i> Pursh	Coastal Plantain (R)
<i>Plantago patagonica</i> Jacq.	Patagonia Plantain (R)
<i>Plantago pusilla</i> Nuttall	Plantain (R)
<i>Platanthera leucostachys</i> Lindley	White-flowered Bog-Orchid (R)
<i>Platanthera sparsiflora</i> (S. Watson) Schltr.	Few-flowered Rein Orchid (R)
<i>Platystemon californicus</i> Benth. var. <i>californicus</i>	Cream Cups (U)
<i>Plectritis ciliosa</i> ssp. <i>insignis</i> (Suksd.) D. Morey	Petite Long-spurred Plectritis (R)
<i>Plectritis macrocera</i> Torrey & A. Gray	White Plectritis (R)
<i>Pluchea odorata</i> (L.) Cass.	Saltmarsh Fleabane (U)
<i>Pluchea sericea</i> (Nutt.) Coville	Arrow Weed (R)
<i>Poa secunda</i> ssp. <i>juncifolia</i> (Scribner) R. Soreng	Rush Bluegrass (R)
<i>Polemonium micranthum</i> Benth.	Phlox (U)
<i>Polycarpon depressum</i> Nutt.	California Allseed (R)
<i>Polygala cornuta</i> var. <i>fishiae</i> (C. Parry) Jeps.	Fish Milkwort (U) CNPS List 4
<i>Polygonum amphibium</i> var. <i>emersum</i> Michx.	Kelp, Water-Smartweed (R)
<i>Polygonum douglasii</i> ssp. <i>johnstonii</i> (Munz) J. Hickman	Sawatch Knotweed (R)
<i>Polygonum hydropiperoides</i> Michaux	Mild Water Pepper, Water Smartweed (R)
<i>Polygonum lapathifolium</i> L.	Willow Weed (U)
<i>Polygonum polygaloides</i> ssp. <i>kelloggii</i> (Greene) J. Hickman	Kellogg Knotweed (R)
<i>Polygonum punctatum</i> Elliott	Dotted Smartweed (U)
<i>Polygonum sawatchense</i> Small ssp. <i>sawatchense</i>	Sawatch Smartweed (R)
<i>Polypodium hesperium</i> Maxon	Western Polypody (R)
<i>Polystichum imbricans</i> ssp. <i>curtum</i> (Ewan) D.H. Wagner	Imbricate Sword Fern (R)
<i>Polystichum imbricans</i> (D.C. Eaton) D.H. Wagner ssp. <i>imbricans</i>	Imbricate Sword Fern (R)
<i>Populus balsamifera</i> ssp. <i>trichocarpa</i> (T. & G.) Brayshaw	Black Cottonwood (Type)
<i>Populus fremontii</i> Wats. XP. <i>balsamifera</i> ssp. <i>trichocarpa</i> (T. & G.) Brayshaw	Hybrid Fremont Cottonwood (R)
<i>Potamogeton foliosus</i> Raf. var. <i>foliosus</i>	Leafy Pondweed (R)
<i>Potamogeton nodosus</i> Poirlet	Long-leaved Pondweed (R)
<i>Potamogeton pectinatus</i> L.	Fennel-leaf Pondweed (R)
<i>Potentilla anserina</i> ssp. <i>pacifica</i> (Howell) Rousi	Pacific Coast Cinquifoil or Silverweed (R)
<i>Potentilla biennis</i> Greene	Biennial Cinquifoil (R)
<i>Potentilla glandulosa</i> Lindley ssp. <i>glandulosa</i>	Sticky Cinquifoil (U)
<i>Potentilla glandulosa</i> ssp. <i>nevadensis</i> (S. Watson) Keck	Sierra Nevada Sticky Cinquifoil (R)
<i>Potentilla glandulosa</i> ssp. <i>reflexa</i> (Greene) Keck	Greene Cinquifoil (R)
<i>Potentilla gracilis</i> var. <i>elmeri</i> (Rydb.) Jeps.	Elmer Slender Cinquifoil (R, Type)

<u>Scientific Name</u>	<u>Common Name</u>
<i>Prunus emarginata</i> (Hooker) Walp.	Bitter Cherry (R)
<i>Prunus ilicifolia</i> ssp. <i>lyonii</i> (Eastw.) P. Raven	Catalina Cherry (R)
<i>Pseudognaphalium beneolens</i> (A. Gray) Anderberg	Coastal Everlasting (U)
<i>Pseudognaphalium leucocephalum</i> (A. Davidson) Anderberg	Whiteleaf or Sonora Everlasting (R) CNPS 2.2
<i>Pseudognaphalium ramosissimum</i> (Nutt.) Anderberg	Pink Everlasting (R)
<i>Pseudostellaria jamesiana</i> (Torrey) W.A. Weber & R.I. Hartman	False Chickweed (R)
<i>Psilocarphus brevissimus</i> Nutt. var. <i>brevissimus</i>	Woolly Marbles (R)
<i>Psilocarphus tenellus</i> var. <i>globiferus</i> (DC.) Morefield	Round Woolly Marbles (R)
<i>Pteridium aquilinum</i> var. <i>pubescens</i> L. Underw.	Western Bracken [Fern] (U)
<i>Purshia tridentata</i> var. <i>glandulosa</i> (Curran) M.E. Jones	Antelope Bush (U)
<i>Pyrola picta</i> Smith	White-veined Wintergreen (R)
<i>Pyrrocoma racemosa</i> var. <i>paniculata</i> (Nutt.) J. Kartesz & K. Gandhi	Pyrrocoma (R)
<i>Quercus douglasii</i> H. & A.	Blue Oak (R)
<i>Quercus dumosa</i> Nutt.	Nuttall or Coastal Sage Scrub Oak (R) CNPS 1B
<i>Quercus palmeri</i> Engelm.	Palmer Oak (R)
<i>Quercus tomentella</i> Engelm.	Channel Island Oak (R)
<i>Quercus turbinella</i> Greene ssp. <i>turbinella</i>	Sonoran Scrub Oak (R)
<i>Quercus wislizenii</i> ssp. <i>frutescens</i> (Engelm.) E. Murray	Shrubby Interior Live Oak (U)
<i>Quercus Xalvordiana</i> Eastwood (<i>Q. douglasii</i> X <i>Q. john-tuckeri</i>)	Alvord Oak (R)
<i>Quercus Xmacdonaldii</i> Greene	MacDonald Oak (R)
<i>Ranunculus californicus</i> Bentham var. <i>californicus</i>	California Buttercup (U)
<i>Ranunculus cymbalaria</i> Pursh	Desert Buttercup (U)
<i>Ranunculus hebecarpus</i> Hooker & Arnott	Hebe-fruited Buttercup (R)
<i>Rhamnus tomentella</i> ssp. <i>cuspidata</i> (Greene) Sawyer	Cuspid Hoary Coffeeberry (R)
<i>Rhus integrifolia</i> (Nutt.) Brewer & S. Watson XR. <i>ovata</i> S. Watson	Lemonade Berry-Sugar Bush Hybrid (R)
<i>Rhus trilobata</i> var. <i>malacophylla</i> (E. Greene) Jepson	Woolly Skunkbrush (U)
<i>Ribes amarum</i> McClatchie var. <i>amarum</i>	Bitter Gooseberry (R)
<i>Ribes amarum</i> var. <i>hoffmannii</i> Munz	Hoffmann's Bitter Gooseberry (R, CNPS 3)
<i>Ribes aureum</i> var. <i>gracillimum</i> (Cov. & Britton) Jeps.	Slender Golden Currant (R)
<i>Ribes californicum</i> Hooker & Arnott var. <i>californicum</i>	Hillside Gooseberry (R)
<i>Ribes californicum</i> var. <i>hesperium</i> (McClatchie) Jeps.	Southern Calif. Gooseberry (U)
<i>Ribes cereum</i> Douglas var. <i>cereum</i>	Wax Currant (U)
<i>Ribes indecorum</i> Eastw.	White-flowered Currant (R)
<i>Ribes montigenum</i> McClatchie	Mountain Gooseberry (R)
<i>Ribes nevadense</i> Kellogg	Mountain Pink Currant (R)
<i>Ribes quercetorum</i> Greene	Oak Gooseberry (R)
<i>Ribes roezlii</i> Regel var. <i>roezlii</i>	Sierra Gooseberry (U)
<i>Ribes velutinum</i> Greene	Plateau Gooseberry (R)
<i>Rigiopappus leptocladus</i> Gray	Rigiopappus (U)
<i>Romneya coulteri</i> Harvey	Coulter Matilija Poppy (R) CNPS List 4
<i>Rorippa palustris</i> var. <i>occidentalis</i> (S. Watson) Rollins	Western Riparian Yellow-cress (R)
<i>Rosa woodsii</i> var. <i>ultramontana</i> (S. Watson) Jeps.	Interior Wild Rose (R)
<i>Rumex hymenosepalus</i> Torrey	Wild Rhubarb, Canaigre (R)
<i>Rumex maritimus</i> L.	Golden Dock (R)
<i>Rumex salicifolius</i> var. <i>crassus</i> (Rech. f.) J. Howell	Willow Dock (R)
<i>Rupertia physodes</i> (Hook.) Grimes	Scurf-pea (R)
<i>Ruppia cirrhosa</i> (Petagna) Grande	Spiral Wigeon-grass or Ditch-grass (R)
<i>Ruppia maritima</i> L.	Wigeon-grass, Ditch-grass (R)
<i>Sagina apetala</i> L. ssp. <i>apetala</i>	Dwarf Pearlwort (R)
<i>Sagina decumbens</i> ssp. <i>occidentalis</i> (S. Wats.) G. Crow	Western Pearlwort (R)
<i>Sagina saginoides</i> (L.) H. Karst.	Sagina, Arctic Pearlwort (R)
<i>Sagittaria sanfordii</i> Greene	Sanford Arrow-head (R) CNPS List 1B
<i>Salicornia bigelovii</i> Torrey	Bigelow Pickleweed (R)
<i>Salicornia depressa</i> Standley	Pickleweed (R)
<i>Salix gooddingii</i> C. Ball	Goodding Black Willow (R)
<i>Salix macrostachya</i> var. <i>leucodendroides</i> Rowlee	Sandbar Willow (U)

<u>Scientific Name</u>	<u>Common Name</u>
<i>Salix hindsiana</i> var. <i>parishiana</i> (Rowlee) C. Ball	Sandbar Willow (R, Type)
<i>Salix lasiolepis</i> var. <i>bigelovii</i> (Torrey) Bebb.	Bigelow Arroyo Willow (R)
<i>Salvia carduacea</i> Benth.	Thistle Sage (R)
<i>Salvia dorrii</i> var. <i>pilosa</i> (Gray) Strachan & Reveal	Pilose Desert Sage (R)
<i>Samolus parviflorus</i> Raf.	Water-pimpernel (R)
<i>Sanicula bipinnata</i> Hooker & Arnott	Poison Sanicle (U)
<i>Sanicula bipinnatifida</i> Hooker	Purple Sanicle (R)
<i>Sanicula graveolens</i> Peopp. ex DC.	Sanicle (R)
<i>Sanicula tuberosa</i> Torrey	Tuberose Sanicle (R)
<i>Sarcocornia pacifica</i> (Standley) A.J. Scott [<i>Salicornia virginica</i> L.]	Pacific Pickleweed or Swampfire (R)
<i>Sarcodes sanguinea</i> Torrey	Snow Plant (U)
<i>Satureja douglasii</i> (Benth.) Briq.	Yerba Buena (R)
<i>Satureja mimuloides</i> (Benth.) Briq.	Monkeyflower Yerba Buena (R)
<i>Saussurea americana</i> D. Eaton	American Sawwort (R)
<i>Saxifraga californica</i> Greene	California Saxifrage (R)
<i>Schoenoplectus acutus</i> var. <i>occidentalis</i> (S. Watson) S.G. Smith	Viscid Tule (R)
<i>Schoenoplectus californicus</i> (C. Meyer) Soják, Čas. Nár.	California Bulrush (R)
<i>Schoenoplectus pungens</i> (Vahl) Palla	Common Threesquare (U)
<i>Schoenoplectus saximontanus</i> (Fern.) J. Raynal	Rocky Mountain Bulrush (R)
<i>Schoenoplectus tabernaemontani</i> (C. Gmelin) Palla	Soft-stem Bulrush (R)
<i>Scirpus microcarpus</i> J. Presl & C. Presl	Small-fruited Bulrush (U)
<i>Scrophularia californica</i> ssp. <i>floribunda</i> (E. Greene) Shaw	Many-flowered Figwort (R)
<i>Scutellaria siphocampyloides</i> Vathek	Skullcap (U)
<i>Scutellaria tuberosa</i> Benth.	Danny Skullcap (U)
<i>Senecio aphanactis</i> Greene	Rayless Ragwort (R)
<i>Senecio flaccidus</i> var. <i>monoensis</i> (Greene) B.L. Turner & T.M. Barkley	Mono Butterweed (R)
<i>Setaria gracilis</i> Kunth	Knotroot Bristlegrass (R)
<i>Shepherdia argentea</i> Nutt.	Buffalo Berry, Silver Buffaloberry (U)
<i>Sidalcea malviflora</i> ssp. <i>californica</i> (T. & G.) C.L. Hitchc.	California Globemallow (U)
<i>Sidalcea malviflora</i> ssp. <i>dolosa</i> C.L. Hitchc.	Dwarf Globemallow or Checkerbloom (R)
<i>Sidalcea neomexicana</i> Gray	Salt Spring Checkermallow (R) CNPS List 2
<i>Sidalcea pedata</i> Gray	Bird-footed Checkerbloom (R)
<i>Silene antirrhina</i> L.	Snapdragon Campion, Catchfly (U)
<i>Silene bernardina</i> S. Watson	Palmer Campion (R)
<i>Silene californica</i> Durand	California Indian Pink (R)
<i>Silene lemmonii</i> S. Watson	Lemmon Campion or Catchfly (R)
<i>Silene multinerva</i> S. Watson	Many-veined Campion (U)
<i>Solanum parishii</i> A.A. Heller	Parish Nightshade (R)
<i>Solanum umbelliferum</i> Eschsch.	Blue Witch (U)
<i>Solidago confinis</i> Gray	Southern Goldenrod (U)
<i>Solidago guiradonis</i> Gray	Guirado Goldenrod (R)
<i>Spergularia macrotheca</i> var. <i>leucantha</i> (E. Greene) Robinson	White Large[-flowered] Sandspurrey (R)
<i>Spergularia macrotheca</i> (Hornem.) Heynh. var. <i>macrotheca</i>	Large[-flowered] Sandspurrey (R)
<i>Spergularia marina</i> (L.) Griseb.	Saltmarsh Sandspurrey (R)
<i>Sphenosciadium capitellatum</i> Gray	Ranger Buttons, Swamp White Heads (R)
<i>Sporobolus airoides</i> (Torey) Torrey	Alkali Sacaton (R)
<i>Stachys ajugoides</i> var. <i>rigida</i> Jeps. & Hoover	Rigid Hedge Nettle (R)
<i>Stebbinsoseris heterocarpa</i> (Nuttall) Chambers	Chicory Microseris (U)
<i>Stellaria nitens</i> Nuttall	Shining Chickweed (R)
<i>Stephanomeria exigua</i> ssp. <i>carotifera</i> (Hoover) Gottlieb	Carot Stephanomeria (U)
<i>Stephanomeria exigua</i> ssp. <i>coronaria</i> (Greene) Gottlieb	Small Stephanomeria (U)
<i>Stephanomeria exigua</i> Nuttall ssp. <i>exigua</i>	Small Stephanomeria (R)
<i>Stephanomeria pauciflora</i> (Nutt.) Nelson var. <i>pauciflora</i>	Wire-lettuce (U)
<i>Stephanomeria virgata</i> ssp. <i>pleurocarpa</i> (Greene) Gottlieb	Two-fruited Wreath Plant (R)
<i>Stillingia linearifolia</i> S. Watson	Narrowleaf Stillingia (R-extirpated?)
<i>Stillingia spinulosa</i> Torrey	Annual Toothleaf (R-extirpated?)

Scientific Name

Streptanthus campestris S. Watson
Stylocline gnaphaloides Nuttall
Stylomecon heterophylla (Benth.) G. Taylor
Suaeda calceoliformis (Hook.) Moq.
Suaeda esteroa Ferren & Whitmore
Suaeda moquinii (Torrey) Greene
Suaeda taxifolia (Standl.) Standl.
Swertia neglecta (H.M. Hall) Jeps.
Symphoricarpos albus var. *laevigatus* (Fern.) S.F. Blake
Syntrichopappus lemmonii (A. Gray) A. Gray
Tauschia hartwegii (A.Gray) J.F. Macbr.
Tetradymia canescens DC.
Tetradymia comosa Gray
Thalictrum fendleri Engelman ex Gray
Thalictrum polycarpum (Torrey) S. Watson
Thermopsis californica var. *argentata* (Greene) Chen & Turner
Thermopsis macrophylla var. *venosa* (Eastwood) Isely
Trichostema micranthum Gray
Trichostema ovatum Curran
Trifolium albopurpureum var. *dictotomum* (H. & A.) Isely
Trifolium ciliolatum Benth.
Trifolium cyathiferum Lindley
Trifolium depauperatum var. *amplectens* (T. & G.) L.F. McDermott
Trifolium depauperatum var. *truncatum* (Greene) Islay
Trifolium fucatum Lindley
Trifolium gracilentum var. *palmeri* (Watson) McDermott
Trifolium longipes ssp. *atrorubens* (Greene) J.M. Gillett
Trifolium microcephalum Pursh
Trifolium microdon Hook. & Arn.
Trifolium monanthum Gray var. *monanthum*
Trifolium monanthum var. *grantianum* (A.A. Heller) Parish
Trifolium obtusiflorum Hooker & Arnott
Trifolium variegatum Nutt.
Trifolium wormskioldii Lehm.
Triglochin concinna Davy var. *concinna*
Triglochin maritima L.
Triglochin striata R. & P.
Triteleia ixioides (Aif. F.) Greene ssp. *ixioides*
Tropidocarpum gracile Hook. [var. *dubium*]
Typha angustifolia L.
Typha latifolia L.
Typha Xdomingensis Pers.
Veratrum californicum Durand var. *californicum*
Verbena bracteata Lagasca & J.D. Rodriguez
Verbena lasiostachys var. *scabrida* Mold.
Veronica peregrina ssp. *xalapensis* (Kunth) Pennell
Veronica serpyllifolia ssp. *humifusa* (Dickson) Syme
Vicia americana Willd. var. *americana*
Vicia hassei S. Watson
Vicia ludoviciana Nutt. var. *ludoviciana*
Viguiera laciniata Gray
Viola aurea Kellogg
Viola macloskeyi F.E. Lloyd ssp. *macloskeyi*
Viola pedunculata ssp. *tenuifolia* M.S. Baker & J.C. Clausen
Viola pinetorum ssp. *grisea* (Jeps.) R.J. Little
Viola pinetorum Greene ssp. *pinetorum*

Common Name

Southern Jewelflower (R)
 Everlasting Nest Straw (U)
 Wind Poppy (R)
 Seablite (R)
 Estuary Seablite (R) CNPS List 1B
 Bush Seepweed (R)
 Woolly Seablite (R) CNPS List 4
 Pine Green Gentian (U) CNPS List 4
 Snowberry (R)
 Lemmon's Xerasid (R) CNPS List 4
 Hartweg Tauschia (R)
 Cottonthorn, Horsebush (R)
 Cottonthorn, Horsebush (R)
 Fendler Meadow-rue (R)
 Tall Western Meadow-rue (R)
 Silvery False-Lupine (U) CNPS List 4
 Slender Santa Ynez False-Lupine
 Bluecurls (R)
 Ovate Bluecurls (R)
 Island Rancheria Clover (R)
 Ciliate or Tree Clover (U)
 Ciliate or Tree Clover (R)
 Dwarf Sack Clover (R)
 Truncate Dwarf Sack Clover (U)
 Bull Clover (R)
 Palmer Pinpoint Clover (R)
 Purple Clover (R)
 Tiny-head Clover (U)
 Tiny-head Clover (R)
 Carpet Clover (R)
 Carpet Clover (R)
 Creek Clover (R)
 Whitetip Clover (R)
 Cows Clover (R)
 Utah Arrow-grass (R)
 Seaside Arrow-grass (R)
 Three-ribbed Arrow-grass (R)
 Golden Brodiaea (R)
 Slender Tropidocarpum (R)
 Slender Cattail (R)
 Broad-leaved Cattail, Soft Flag (U)
 Southern Cattail Hybrid (R)
 California False Hellebore (R)
 Prostrate Verbena (R)
 Western Verbena (R)
 Purslane Speedwell (U)
 Tyme-leaved Speedwell (R)
 American Vetch (U)
 Hasse Vetch (R)
 Vetch (R)
 San Diego County Viguiera (R)
 Golden Violet (R)
 Small White Violet (R)
 Johnny-Jump-Up (U)
 Gray-leaved Violet (R) CNPS 1B
 Mountain Violet (U)

Scientific Name

Viola purpurea Kellogg ssp. *purpurea*
Viola purpurea ssp. *mohavensis* (M. Baker & J. Clausen) J. Clausen
Viola purpurea ssp. *quercetorum* (M. Baker & J. Clausen) R.J. Little
Vitis californica Benth.
Vitis girdiana Munson
Vulpia microstachys var. *confusa* (Piper) Lonard & Gould
Yabea microcarpa (Hooker & Arnott) Koso-Pol.
Zannichellia palustris L.
Zostera marina L.

Common Name

Purple or Mountain Violet (U)
Mojave Yellow Violet (U)
Oak Violet (U)
California Wild Grape (R)
Desert Wild Grape (R)
Ciliate Fescue (R)
Yabea (R)
Horned-Pondweed (R)
Eel-grass (R)

Plants Expected to Occur in Ventura County But Lacking Physical Evidence⁹

Scientific Name

Abronia latifolia Eschsch.
Achnatherum latiglumis (Swallen) Barkworth
Actaea rubra (Aiton) Wildenow
Adiantum aleuticum (Rupr.) C.A. Paris
Agastache urticifolia (Bentham) Kuntze var. *urticifolia*
Agrostis microphylla Steudel
Agrostis scabra Willd.
Allenrolfea occidentalis (S. Watson) Kuntze
Allophyllum integrifolium (Brand) A.D. Grant & V. Grant
Alopecurus aequalis Sobol. var. *aequalis*
Alopecurus geniculatus L.
Ambrosia dumosa (A. Gray) Payne
Amsinckia eastwoodae J.F. Macbr.
Anaphalis margaritacea (L.) Benth. & Hooker F. ex C.B. Clarke
Arabis platysperma Gray var. *platysperma*
Aristida purpurea var. *nealleyi* (Vasey) K.W. Allred
Aristida purpurea Nuttall var. *purpurea*
Aristida purpurea var. *wrightii* (A. Hitchc.) K.W. Allred
Arnica discoidea Benth. var. *discoidea*
Artemisia ludoviciana ssp. *incompta* (Nuttall) Keck
Aster occidentalis (Nuttall) Torrey & A. Gray var. *occidentalis*
Athyrium filix-femina var. *californicum* Butters
Athyrium filix-femina var. *cyclosorum* Ruprecht
Atriplex parishii S. Watson
Azolla mexicana C. Presl
Berberis pinnata Lagasca ssp. *pinnata*
Brodiaea elegans Hoover ssp. *elegans*
Brodiaea jolonensis Eastwood
Calystegia longipes (S. Watson) Brummitt
Calystegia sepium ssp. *limnophila* (E. Greene) Brummitt
Carex schottii Dewey
Carex serratodens W. Boott
Castilleja campestris (Bentham) Chuang & Heckard ssp. *campestris*
Castilleja densiflora ssp. *gracilis* (Benth.) Chuang & Heckard
Castilleja plagiotoma A. Gray
Castilleja tenuis (A.A. Heller) Chuang & Heckard

Common Name

Coastal or Yellow Sand-verbena Φ
Needlegrass Φ
Red Banberry Φ
Western Five-finger Fern or Maidenhair Φ
Nettleleaf Horsemint, Giant Hyssop Φ
Small-leaved Bentgrass Φ
Rough Bentgrass Φ
Iodine Bush Φ
Sticky Allophyllum Φ
Short-awn Foxtail Φ
Water Foxtail Φ
White Bur-sage, Burro Bush, Burro-Weed Φ
Elegant Fiddleneck Φ
Pearly Everlasting Φ
Pioneer Rock Cress Φ
Nealley Three-awn Grass Φ
Purple Three-awn Grass Φ
Parish Three-awn Grass Φ
Rayless or Discoid Arnica Φ
White Sagebrush Φ
Western Mountain Aster Φ
Southwestern Lady Fern Φ
Northwestern Lady Fern Φ
Parish Brittsescale Φ
Mexican Duckweed Fern Φ
Pinnate-leaved Barberry Φ
Elegant Brodiaea Φ
Dwarf Brodiaea Φ
Morning-glory Φ
Riparian Morning-glory Φ
Schott Sedge Φ
Sawtooth Sedge Φ
Field Owl's Clover Φ
Slender Dense-flowered Owl's Clover Φ
Mojave Indian Paintbrush Φ
Bristle Owl's Clover Φ

⁹ Taxa that are expected to occur within Ventura County but for which no vouchers have been collected or observed. If any of these taxa are found within Ventura County, they should be considered locally rare species. Plants with a "Φ" following the common name lack vouchers from Ventura County at the following herbaria (CHSC, DAV, IRVC, JEPS, POM, RSA, SBBG, SD, SJSU, UC, UCI, UCR, UCSB, USSC).

Scientific Name

Caulanthus crassicaulis (Torrey) S. Watson var. *crassicaulis*
Centaurium muhlenbergii (Griseb.) W. Wright ex Piper
Centromadia fitchii (A. Gray) E. Greene
Cephalanthera austini (A. Gray) Heller
Chamaesyce serpyllifolia ssp. *hirtula* (S. Watson) Koutnik
Chorizanthe fimbriata Nuttall var. *fimbriata*
Chorizanthe obovata Goodman
Chorizanthe wheeleri S. Watson
Circaea alpina ssp. *pacifica* (Aschers. & Magnus) Raven
Cladium californicum (S. Watson) O'Neill
Clarkia heterandra (Torrey) H. Lewis & Raven
Clarkia similis Harlan Lewis & Ernst
Clematis pauciflora Nuttall
Collomia linearis Nuttall
Comarostaphylis diversifolia ssp. *planifolia* (Jeps.) G.D. Wallace
Corallorhiza maculata (Raf.) Raf.
Coreopsis californica (Nuttall) H.K. Sharsmith var. *californica*
Cornus nuttallii Audubon
Cornus sericea ssp. *occidentalis* (Torrey & A. Gray) Fosberg
Crassula solieri (C. Gay) F. Meigen
Cucurbita palmata S. Watson
Cuscuta californica var. *papillosa* Yuncker
Cyperus niger Ruiz Lopez & Pavon
Damasonium californicum Benth
Deschampsia elongata (Hooker) Benth
Descurainia incisa (A. Gray) Britton ssp. *incisa*
Dodecatheon clevelandii E. Greene ssp. *clevelandii*
Elatine rubella Rydb.
Eleocharis parvula (Roemer & Schultes) Link
Epilobium halleanum Hausskn.
Eremalche exilis (A. Gray) E. Greene
Eremalche parryi ssp. *kernensis* (C. Wolf) D. Bates
Erigeron philadelphicus L.
Eriogonum pusillum T. & G.
Eriophyllum ambiguum (A. Gray) A. Gray var. *ambiguum*
Eriophyllum lanatum var. *hallii* Constance
Eschscholzia lemmonii ssp. *kernensis* (Munz) C. Clark
Eustoma exaltatum (L.) Don
Euphorbia crenulata Engelm
Fraxinus latifolia Benth
Galium californicum ssp. *flaccidum* (E. Greene) Dempster & Stebb.
Garrya elliptica Lindley
Gayophytum humile A.L. Juss.
Gayophytum oligospermum H. Lewis & J. Szweykowski
Geranium carolinianum L.
Geranium richardsonii Fischer & Trautv.
Gilia tricolor Benth
Glyptopleura marginata D. Eaton
Grayia polygaloides Hooker & Arnott
Helianthus californicus DC.
Hesperolinon micranthum (A. Gray) Small
Hesperomecon linearis (Benth) E. Greene
Heterocodon rariflorum Nuttall
Hordeum jubatum L.
Hydrocotyle ranunculoides L.f.
Hydrocotyle umbellata L.

Common Name

Thick-stem Wild Cabbage Φ
 Monterey Centaury Φ
 Fitch Spikeweed Φ
 Phantom Orchid Φ
 Hairy Thyme-leaved Spurge Φ
 Fringed Spineflower (R) – Newhall Ranch
 Obovate Spineflower Φ
 Wheeler Spineflower Φ
 Enchanter's Nightshade Φ
 Saw-grass Φ
 California Gaura Φ
 Copy-cat Clarkia Φ
 Ropevine Φ
 Narrow-leaved Collomia Φ
 Simpleleaf Summer Holly Φ
 Spotted Coral Root Φ
 California Coreopsis Φ
 Mountain Dogwood Φ
 Western American Dogwood Φ
 Solier Vernal Pool Water Pigmy-weed Φ
 Coyote Melon Φ
 California Dodder Φ
 Black Flatsedge Φ
 Fringed Water-Plantain Φ
 Slender Hairgrass Φ
 Richardson Tansy Mustard Φ
 Cleveland Shooting Star Φ
 Waterwort Φ
 Colorado Spike-rush Φ
 Gland Willow-herb Φ
 White-flowered Mallow Φ
 Kern Mallow Φ
 Philadelphia Fleabane Φ
 Puny Buckwheat Φ
 Ambiguous Woolly Daisy Φ
 Fort Tejon Yarrow Φ
 Tejon Poppy Φ
 Catchfly Gentian Φ
 Chinese Caps Φ
 Oregon Ash Φ
 California Bedstraw Φ
 Silk-tassel Bush Φ
 Low Gayophytum Φ
 Southern California Mountain Gayophytum Φ
 Cransebill, Carolina Geranium Φ
 Mountain Geranium Φ
 Birds-eye or Tricolor Gilia Φ
 Sculpted-fruit Φ
 Hop-Sage Φ
 California Sunflower Φ
 Dwarf Flax Φ
 Western Poppy Φ
 Western Pearl-flower Φ
 Foxtail Barley Φ
 False-crowfoot Pennywort Φ
 Marsh Pennywort Φ

Scientific Name

Hymenoclea monogyra Torrey & Gray
Hymenoclea salsola var. *pentalepis* (Rydb.) L. Benson
Iris douglasiana Herbert in W.J. Hooker and G.A.W. Arnott
Isoetes orcuttii A.A. Eaton
Juncus bryoides F.J. Hermann
Juncus falcatus E. Meyer var. *falcatus*
Juncus orthophyllus Cov.
Lasthenia fremontii (A. Gray) E. Greene
Lasthenia glaberrima A. DC.
Lasthenia microglossa (A. DC.) E. Greene
Layia hieracioides (DC.) Hooker & Arnott
Lepidium latipes Hooker var. *latipes*
Lilaea scilloides (Poir.) Haum.
Lonicera hispidula var. *vacillans* A. Gray
Lonicera interrupta Benth. X *Lonicera hispidula* var. *vacillans* Gray
Luzula comosa E. Meyer
Luzula subsessilis (S. Watson) Buchenau
Madia elegans ssp. *densifolia* (E. Greene) Keck
Malacothrix coulteri Gray
Mimulus palmeri A. Gray
Minuartia californica (A. Gray) Mattf.
Monardella australis Abrams
Monardella villosa ssp. *obispoensis* (Hoover) Jokerst
Najas marina L.
Nemophila parviflora var. *quercifolia* (Eastw.) Chandler
Opuntia phaeacantha Engelm.
Orthocarpus linearilobus Bentham
Osmorhiza chilensis Hooker & Arnott
Panicum acuminatum Sw. var. *acuminatum*
Parnassia californica (A. Gray) E. Greene
Penstemon spectabilis Thurber var. [ssp.] *spectabilis*
Penstemon spectabilis var. [ssp.] *subviscosus* (Keck) McMinn
Phacelia congdonii Greene
Phoradendron libocedri (Engelm.) Howell
Physalis acutifolia (Miers) Sandw.
Plagiobothrys collinus var. *californicus* (A. Gray) Higgins
Plectritis brachystemon Fischer & C. Meyer
Pogogyne zizyphoroides Bentham
Polygonum amphibium var. *stipulaceum* Coleman
Polygonum douglasii E. Greene ssp. *douglasii*
Quercus garryana var. *breweri* (Engelm.) Jeps.
Ranunculus aquatilis var. *capillaceus* (Thuill.) DC.
Rubus leucodermis var. *bernardinus* (E. Greene) Jepson
Rubus parviflorus Nuttall
Sagittaria calycina Englemann
Sagittaria latifolia Willd.
Salix sitchensis Bong.
Sanicula hoffmannii (Munz) Stan & Constance
Scutellaria bolanderi ssp. *austromontana* Epling
Senecio californicus DC.
Spirodela polyrrhiza (L.) Schlied.
Spirodela punctata C. Thompson
Sporobolus airoides Torrey
Streptanthella longirostris Rydb.
Thelypteris puberula var. *sonorensis* A.R. Smith
Thermopsis macrophylla Hook. & Arn. var. *macrophylla*

Common Name

Leafy Burrobrush Φ
Southern Burrobrush Φ
Mountain Iris Φ
Orcutt Quillwort Φ
Moss Rush Φ
Sickleleaf Rush Φ
Straight-leaf Rush Φ
Fremont Goldfields Φ
Rayless or Smooth Goldfields Φ
Small-rayed Goldfields Φ
Tall Layia Φ
Dwarf Peppergrass Φ
Flowering Quillwort Φ
California Honeysuckle Φ
Chaparral Honeysuckle hybrid Φ
Wood Rush Φ
Wood Rush Φ
Dense-flowered Tarplant or Madia Φ
Snake-head Φ
Palmer Monkeyflower Φ
California Sandwort Φ
Southern Coyote Mint Φ
San Luis Obispo Coyote Mint Φ
Spiny Naiad Φ
Oak-leaved Nemophila (R)
Engelmann Prickly Pear Φ
Pallid Owl's Clover Φ
Mountain Sweetroot or Sweet Cicely Φ
Panicgrass Φ
Grass-of-Parnassus Φ
Royal Penstemon Φ
Sticky Royal Penstemon Φ
Congdon Phacelia Φ
Incense-cedar Mistletoe Φ
Ground-cherry Φ
California Popcornflower Φ
Small-flowered Pink Plectritis Φ
Sacramento Mesamint Φ
Stipuled Water-Smartweed Φ
Douglas Knotweed Φ
Brewer Oregon Oak Φ
Slender White Water Crowfoot Φ
Sticky Blackcap Raspberry Φ
Thimbleberry Φ
Hooded Arrowhead Φ
Broadleaf Arrowhead Φ
Sitka Willow Φ
Hoffmann's Sanicle Φ
Southern Skullcap Φ
California Ragwort
Duckmeat Φ
Duckmeat Φ
Alkali Sacaton Φ
Dwarf Jewelflower Φ
Sonoran Maiden Fern Φ
False-Lupine Φ

Scientific Name

Trichostema austromontanum Harlan Lewis ssp. *austromontanum*
Trichostema parishii Vasey
Triteleia dudleyi Hoover
Triteleia hyacinthina (Lindley) E. Greene
Triteleia ixiooides ssp. *scabra* (E. Greene) L. Lenz
Triteleia laxa Benth
Utricularia vulgaris L.
Vaccinium ovatum Pursh
Viola sheltonii Torrey
Wolffia borealis Landolt & O. Wildi
Wolffia columbiana Karsten
Wolffia globosa Hartog & Plas
Wolffiella lingulata Hegelm.
Wolffiella oblonga (Phil.) Hegelm.
Wyethia ovata T. & G.
Yucca brevifolia var. *herbertii* (J.M. Webber) Munz

Common Name

San Jacinto Bluecurls Φ
 Parish Bluecurls Φ
 Dudley Triteleia Φ
 White Triteleia Φ
 Golden Brodiaea Φ
 Ithuriel Spear Φ
 Bladderwort Φ
 California Huckleberry Φ
 Shelton Violet Φ
 Water-meal Φ
 Coastal Water-meal Φ
 Globe Water-meal Φ
 Mud-midget Φ
 Oblong Water-meal Φ
 Mule-ears Φ
 Herbert Joshua Tree Φ

Plants Recently Removed from List

Below is a list of taxa that were previously included on this list, but removed after the eleventh (presumed) extant population was found (through either direct field surveys or searches of herbaria records). Only those taxa removed from the current edition are listed below. Consult earlier editions of this checklist for taxa previously removed. A total of 93 taxa were removed since the publication of this checklist in early 2007, of which 25 taxa were removed since the 3 August 2007 edition.

Scientific Name

~~*Achillea millefolium* L. var. *arenicola* (Heller) Nobs in Ferris~~
Achillea millefolium L. var. *californica* (Pollard) Jepson
Achillea millefolium L. var. *occidentale* DC.
Achillea millefolium L. var. *millefolium*
Achillea millefolium L. var. *pacifica* (Rydb.) G.N. Jones
Agoseris grandiflora (Nutt.) Greene
Arctostaphylos glandulosa ssp. *glaucomollis* P. Wells
Arctostaphylos glandulosa ssp. *zacaensis* (Eastw.) P. Wells
Carex feta L. Bailey
Carex spissa L. Bailey
Chamaesyce albomarginata (Torrey & A. Gray) Small
Clarkia epilobioides (Nutt.) A. Nels. & J.F. Macbr.
Cryptantha clevelandii E. Greene
Delphinium cardinale Hooker
Eleocharis geniculata (L.) Roemer & Schultes
Eleocharis radicans (Poir.) Kunth
Eriastrum filifolium (Nutt.) Woot. & Standl.
Galium nuttallii A. Gray ssp. *nuttallii*
Lithophragma affine Gray
Malacothamnus orbiculatus (Greene) Greene
Mentzelia pinetorum A.A. Heller
Quercus Xeplingii C.H. Muller
Sagittaria longiloba Engelm
Salix bonplandiana Kunth.
Viola pedunculata T.& G. ssp. *pedunculata*
Viola sheltonii Torrey

Common Name

~~Common Island White Yarrow (R)~~
 California White Yarrow (R)
 Woolly White Yarrow (U)
 White Yarrow (U)
 Pacific White Yarrow (R)
 Bigflower [Mountain] Dandelion (U)
 Transverse Ranges Manzanita (U)
 Zaca Lake Manzanita (U)
 Green-sheathed Sedge Φ
 San Diego Sedge Φ
 Rattlesnake Spurge (U)
 Willow-herb Godetia (U)
 Cleveland Forget-Me-Not (U)
 Scarlet or Cardinal Larkspur (U)
 Geniculate Spike-rush Φ
 Rooted Spike-rush Φ
 Narrowleaf Woolly Star (R)
 San Diego or Climbing Bedstraw (U)
 Woodland Star (U)
 Roundleaf Bushmallow (R)
 Stickleaf (R)
 White Oak hybrid Φ
 Gregg Arrow-head Φ
 Willow (R)
 Johnny-Jump-Up (U)
 Shelton Violet (R)