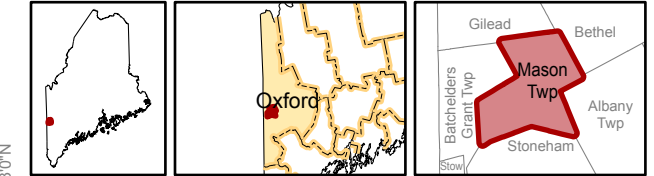


Mason Twp.



Oxford County



Land Use Guidance Map
 Department of Agriculture, Conservation and Forestry
 Maine Land Use Planning Commission

Legend

DEVELOPMENT SUBDISTRICTS

D-RS: Residential

MANAGEMENT SUBDISTRICTS

M-GN: General

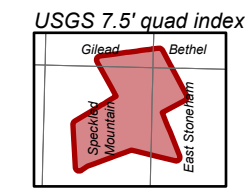
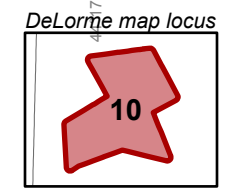
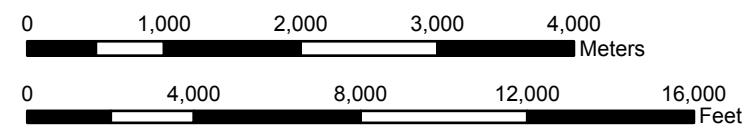
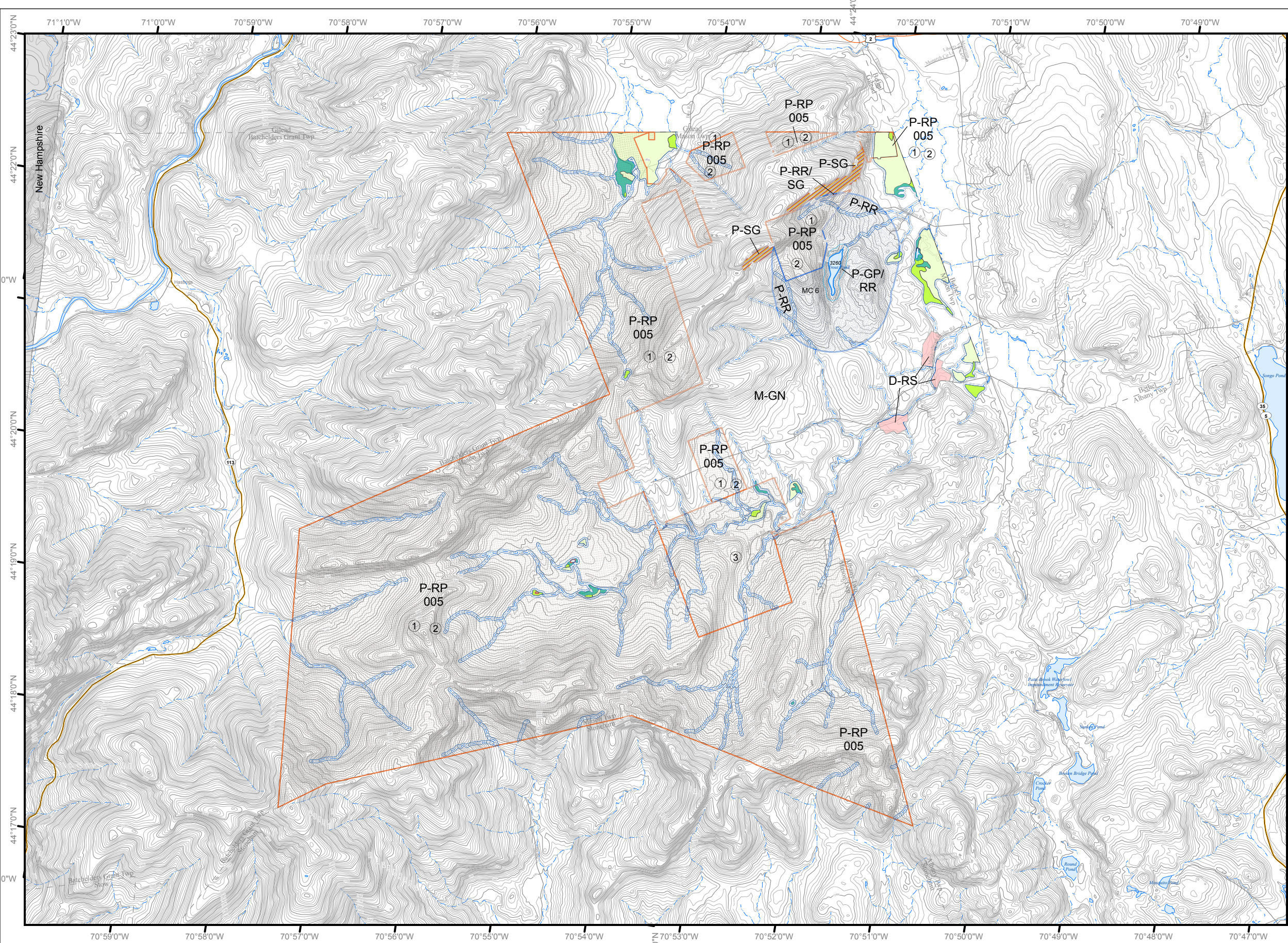
PROTECTION SUBDISTRICTS

- P-GP: Great Pond
- P-RP: Resource Plan
- P-RR: Recreation
- P-SG: Soils and Geology
- P-SL2: Shoreland - 75'
- P-WL1: Wetlands of Special Significance
- P-WL2: Scrub-shrub Wetlands
- P-WL3: Forested Wetlands

This map does not show all designated P-WL Subdistricts, such as non-tidal water bodies and freshwater wetlands within 25 feet of flowing waters.

This map is a reduced-size version and should not be considered definitive. Full sized, official Land Use Guidance Maps are available on the LUPC website or by request.

Amendments			
Location #	Zoning Permit	Effective Date	Remarks
1	ZP155C	12/22/2005	Expires December 31, 2007
2	ZP155D	05/22/2008	Expires May 22, 2023
3	ZP155E	05/07/2023	renew the P-RP Subdistrict zoning for a 30-year period



- ① Map amendment location
- ▲ Point at which a river drains 25 square miles - symbol points upstream (12 M.R.S. Sec. 682-B(4))
- 9999 MIDAS number: Unique number assigned to each standing body of water in Maine.
- WQLL Water Quality Limiting Lake - Refer to Section 10.23,E.3.g of the Commission's Land Use Districts and Standards.
- MC# Lake Management Classes - Refer to Section 10.02 (Definitions) of the Commission's Land Use Districts and Standards.

SOURCES: Maine Land Use Planning Commission, USGS