

Marine Corps Air Station Iwakuni



*Garbage Separation Guidance
for
Operational & Maintenance
Buildings*

- Combustibles
- Ceramics & Glass
- Metal / Fragments
- Plastics
- Styrofoam
- PET/PETE Bottles
- Glass Bottles
- Recyclable Items
- Nondisposable Items
- Bulky Items

Separation Rules

All trash will go into clear bags, colored bags are not authorized.

Trash will not be collected if it is not separated per this guidance.

All bags must be placed within your designated trash enclosure.

No auto parts will be accepted in any trash enclosure.

No Hazardous Material / Waste will be collected at any trash enclosure.

Coordinated all Hazardous Materials / Wastes turn in with your
Hazardous Waste Accumulation (HWAP) Manager .



All government property must be turned into DRMO (DLA) for disposal.

Trash Containers

- **All O&M and administration buildings are provided with containers and signs to properly store and collect all solid waste.**
- **Each category of waste will be placed in its own bag. Mixing different categories of waste in the same bag or waste container is prohibited.**
- **If the trash enclosure does not have adequate containers to properly store waste, contact your facility representative.**

(WASTE OUTSIDE OF ANY CONTAINER IS PROHIBITED)

❖ **Attachment (1) shows the scheduled dates for collection of trash**

Combustibles

Category I

- **Kitchen garbage:**

such as vegetables, fruits, egg shells, bones, clams, etc.

- **Paper containers:**

including containers with aluminum lining, boxes, paper, paper noodle cups, ice cream containers, etc.

Japanese marking for paper is



- **Garden waste:**

such as leaves and plant trimmings

- **Cloths:**

such as bed sheets, aprons, towels, curtains, etc.

- **Sanitary items:**

such as sanitary napkins, disposable diapers, paper, pet toilets, etc.

- **Others:**

items cigarette butts, wooden hangers, etc.



❖ (Rinse off residual food and other liquids)

❖ Pill disposal



Do not flush medicines, vitamins or other supplements down toilet or pour them down drain unless noted on packaging.



Remove or conceal personal information and R_x number using black marker.



Put undesirable substance such as used coffee grounds or cat litter into disposable container with lid (or plastic bag). Mix the medicine or supplement with undesirable substance.



Seal medicine mixture with lid or inside plastic bag. Dispose mixture and medicine container in trash.

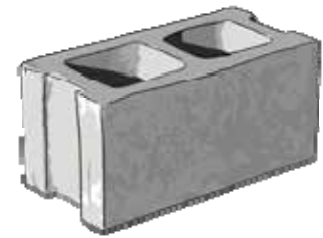
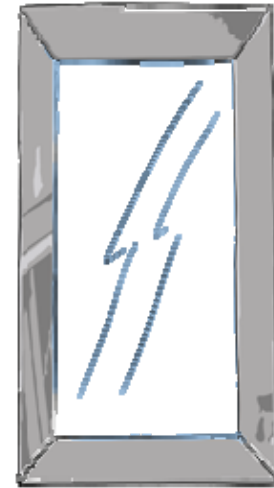


Close or tie trash bag. Take trash bag out to garbage as close to garbage pick up time as possible.

Ceramics & Glass

Category II

- **Pottery**
- **Glass mirrors** (wrap broken glass in newspaper)
- **Agro-chemical bottle** (dispose caps according to material)
- **Dishes** (plates and drinking glasses)
- **Other** pieces of blocks and concretes



No food or vegetation is allowed to be disposed of in this category

*Glass bottles are Category VII

Metal / fragment

Category III

- **Aluminum foil and aluminum containers**
(Rinse out thoroughly)
- **Metal cooking ware**
e.g. pots, kettles, knives, cap or can openers, and others
(gas cartridges or spray cans can never be placed in Metal Fragments)
- **Metal Items**
(items that fit into plastic bags)
e.g. scales, scissors, knives, razors, cameras, tools,
metal wires, nails, screws, umbrellas, hangers, etc.
- **Other items**
e.g. clocks, calculators, AC adapters, CDs, floppy
discs, records, ball point pens.
(take out batteries before disposal)
- **Fragmental items** (Items containing 60% or more metal)
- **Small electrical appliances**
e.g. lamps, pencil sharpeners
(take out electrical cords with [Recyclable items])



* Metal/fragment can also be dropped off at the installation Recycling Center (Bldg. 7725 or 253-3039) during normal working hour M-F 0800-1600

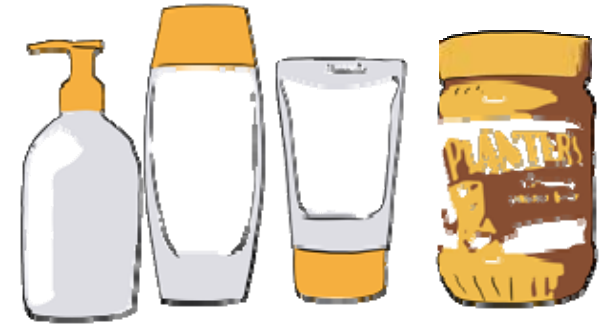
60% Metal Acceptable

Plastics

Category IV

- Plastic bags and containers
- Nylon bags, food wrappers
- Candy wrappers such as cellophane
- **Stained Styrofoam:** with food or liquid residue
- **Plastic containers**
e.g. containers for seasonal cooking oil , shampoo, cosmetic, mayonnaise, mustard, toothpaste, pudding, butter, bean-curd, eye droppers, etc.

* Rinse out and wipe down all plastic



Remove all caps and lids and rinse containers thoroughly (if caps are metal place with metals)

Japanese marking for plastic is



Styrofoam

Category V

- **Styrofoam needs to be cleaned and any tape removed.**



Stained styrofoam is considered as plastics, place them in Category IV.

PET/PETE Bottles

Category VI

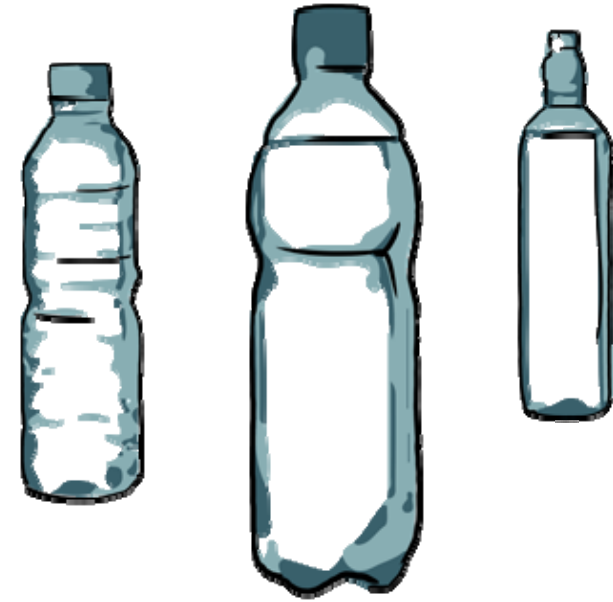
- **Drink bottles**

e.g vitamin drinks, liquor, medicine bottles

- **Bottles for food**

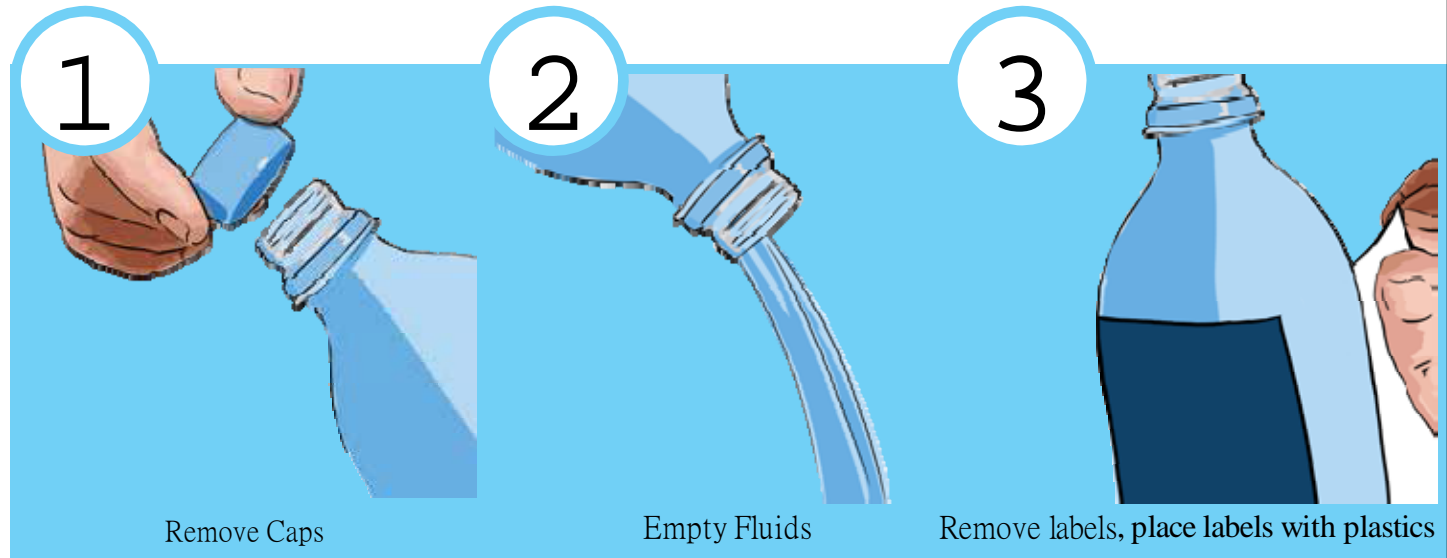
Only containers with PET/PETE marking

- **Cosmetic bottles**



- ❖ Remove all caps and lids and rinse containers thoroughly (place cap and labels in appropriate categories III or IV)

- ❖ Polyethylene Terephthalate, commonly known as PET or PETE is a clear plastic bottle used for water and soda bottle containers.



Remove Caps

Empty Fluids

Remove labels, place labels with plastics

PET/PETE bottles do not go to recycling center on base

Glass Bottles

Category VII

- **Drink bottles**

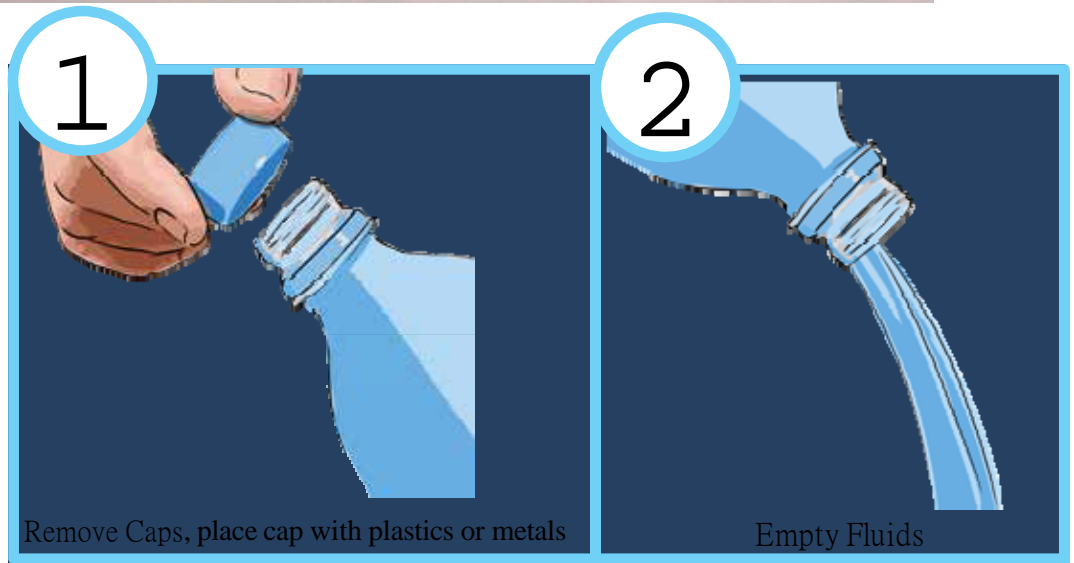
e.g. vitamin drinks, liquor,
medicine bottles

- **Bottles for food**

e.g. glass bottles for jam, dressing,
pepper, and instant coffee

- **Cosmetic bottles**

- ❖ Remove all caps and lids and rinse containers thoroughly (place cap and lids in appropriate categories III & IV)



Recyclables

Category VIII

| | |
|------------------------|--|
| Newspaper* | Must be cleaned and put into plastic bags. |
| Magazines* | Must be cleaned and put into plastic bags. |
| Cans (steel/aluminum)* | Rinse cans. |
| Cardboard* | Fold and cleaned put into plastic bags. |
| Clothing | Must be cleaned and put into plastic bags. |
| Electical Cords | Wrap in bundles. |
| Cooking Oils | Put in plastic bottles to prevent leaks. |
| Electronic Waste | Place in plastic bag. |



Each category item needs to be in their own separate bag.

* Items can be dropped off at the 24 hour Recycling Center drop off containers, all other items can be delivered to Recycling Center during normal working hours M-F 0800-1600.

Non-disposables

Category IX

Each category item needs to be in their own separate bag.



Lithium batteries only.

All other batteries shall be placed into the Recycle Battery Box located with organizational Environmental Rep.



Empty
Aerosol Cans



Gas Cartridges / Lighters



All light bulbs to include
fluorescent lamps shall
be transferred to bldg.



Propane
Tank

Bulky Items

Category X

- Bulky items are considered as **GOVERNMENT PROPERTY** and shall be coordinated through DRMO DLA for turn in.
 - Call DRMO at 253-6831 to request a drop off date for your government property (it is the owning organization responsibility to transport their property to DRMO).

