



2018 – 2019 Season Highlights

**Debbie Langenfeld
Citizen Science Chair**



MCDOWELL
SONORAN
CONSERVANCY

The Stats

- 17 projects
- 223 Citizen Science volunteers
- 8,867 Citizen Science hours
- 7 CS101 classes & 80 participants
- 7 Certified Citizen Scientists



Challenges

Drought

Challenges

Flooding

Challenges

Hail



Challenges

Snow



Challenges

Rain and wind



MCDOWELL
SONORAN
CONSERVANCY

Challenges

Globe Chamomile....



21 New Species

- Plants
- Mammals
- Invertebrates
- Birds



Red-winged blackbird

Agelaius phoeniceus



A Wilson's snipe is perched on a weathered wooden post. The bird has a long, straight, dark beak and is facing left. Its plumage is mottled with brown and white, and its legs are long and thin. The background is a clear, light blue sky.

Wilson's snipe
Gallinago delicata



MCDOWELL
SONORAN
CONSERVANCY

Credit: Sean Breazeal

Common merganser

Mergus merganser





Blue-winged teal
Anas discors

Dickcissel

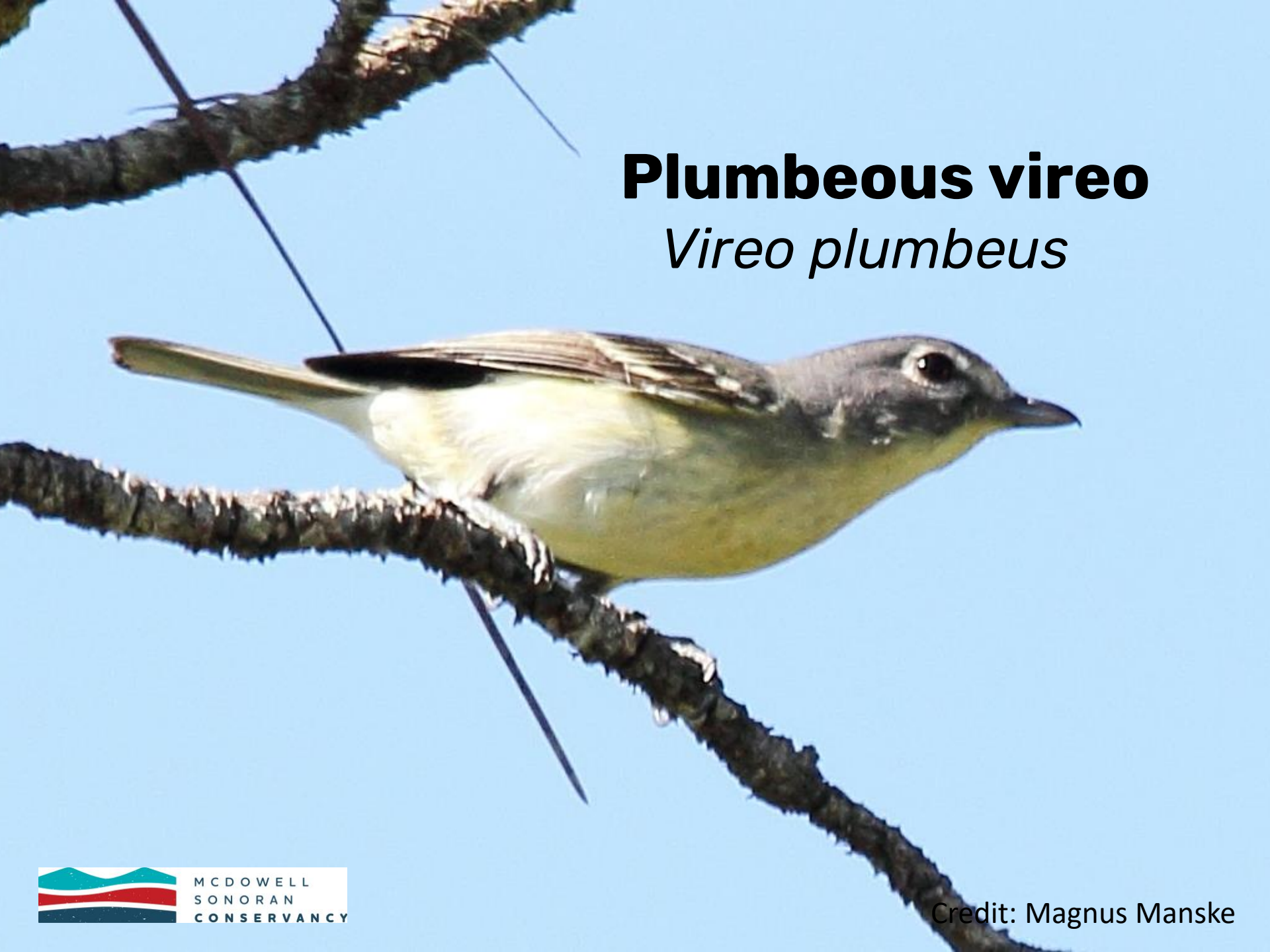
Spiza americana



Cedar waxwing

Bombycilla cedrorum



A photograph of a Plumbeous vireo perched on a dark, textured branch. The bird is shown in profile, facing right. It has a greyish-brown head and back, with a prominent white eye-ring. The underparts are a pale, yellowish-green. The background is a clear, bright blue sky. The branch is thick and has a rough, bark-like texture.

Plumbeous vireo

Vireo plumbeus

American lady

Vanessa virginiensis

Orange skipperling

Copaeodes aurantiaca



ORANGE SKIPPERLING
(*Copaeodes aurantiaca*)
MarianneSkovJensen

Leda ministreak

Ministrymon leda



Eufala skipper

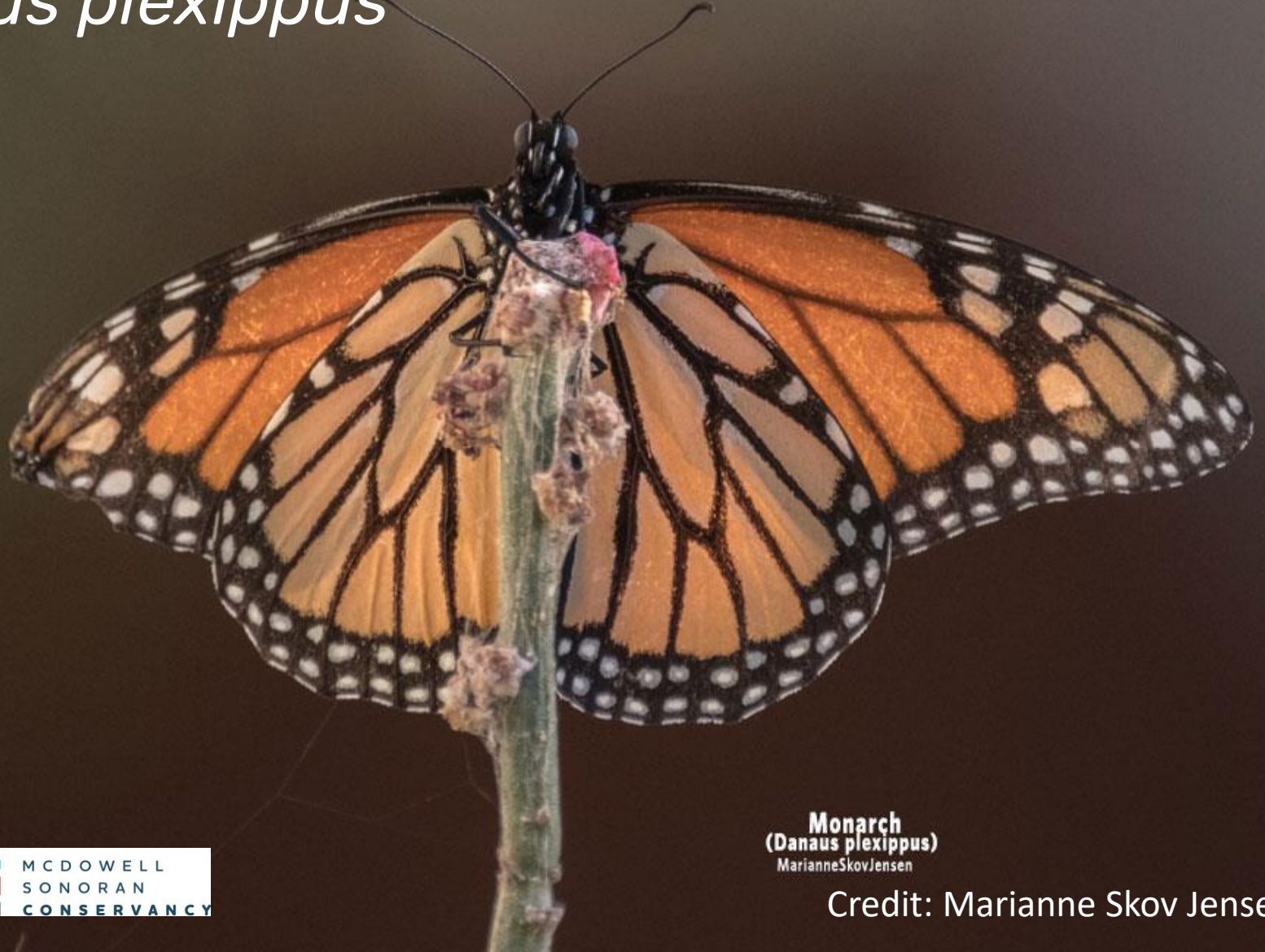
Lerodea eufala



EUFALA SKIPPER
(*Lerodea eufala*)
MarianneSkovJensen

Monarch

Danaus plexippus



Monarch
(*Danaus plexippus*)
MarianneSkovJensen

Credit: Marianne Skov Jensen

West coast lady

Vanessa annabella



MCDOWELL
SONORAN
CONSERVANCY

Credit: Alan Vernon

Texan crescent

Phyciodes texana



Texan Crescent
(*Anthanassa texana*)
MarianneSkovJensen

Alfalfa looper moth

Autographa californica



White-nosed coati

Nasua narica



A close-up photograph of a Dwarf cottonrose plant (Logfia depressa) growing in a rocky, sandy environment. The plant has small, green, succulent-like leaves and tiny yellow flowers. The ground is covered with small, light-colored pebbles and sand. A semi-transparent white box is overlaid on the top right of the image, containing the plant's name in bold black text and its scientific name in italics.

Dwarf cottonrose
Logfia depressa



Longcapsule suncup
Camissonia chamaenerioides



Night scented stock
Matthiola longipetala



Common pepperweed
Lepidium densiflorum

Rush milkweed

Asclepias subulata



MCDOWELL
SONORAN
CONSERVANCY

Credit: R. Shuler

Flora & Fauna

- Pollinators to Phenology
- Corridor acoustic monitoring
- Wildlife study group
- Bird surveys
- Bat surveys at Dixie Mine



Restoration

Infiltration



Restoration

Soil crust farming



Restoration

Historical sites



Restoration

Disturbed lands mapping



MCDOWELL
SONORAN
CONSERVANCY

Potential Restoration Areas

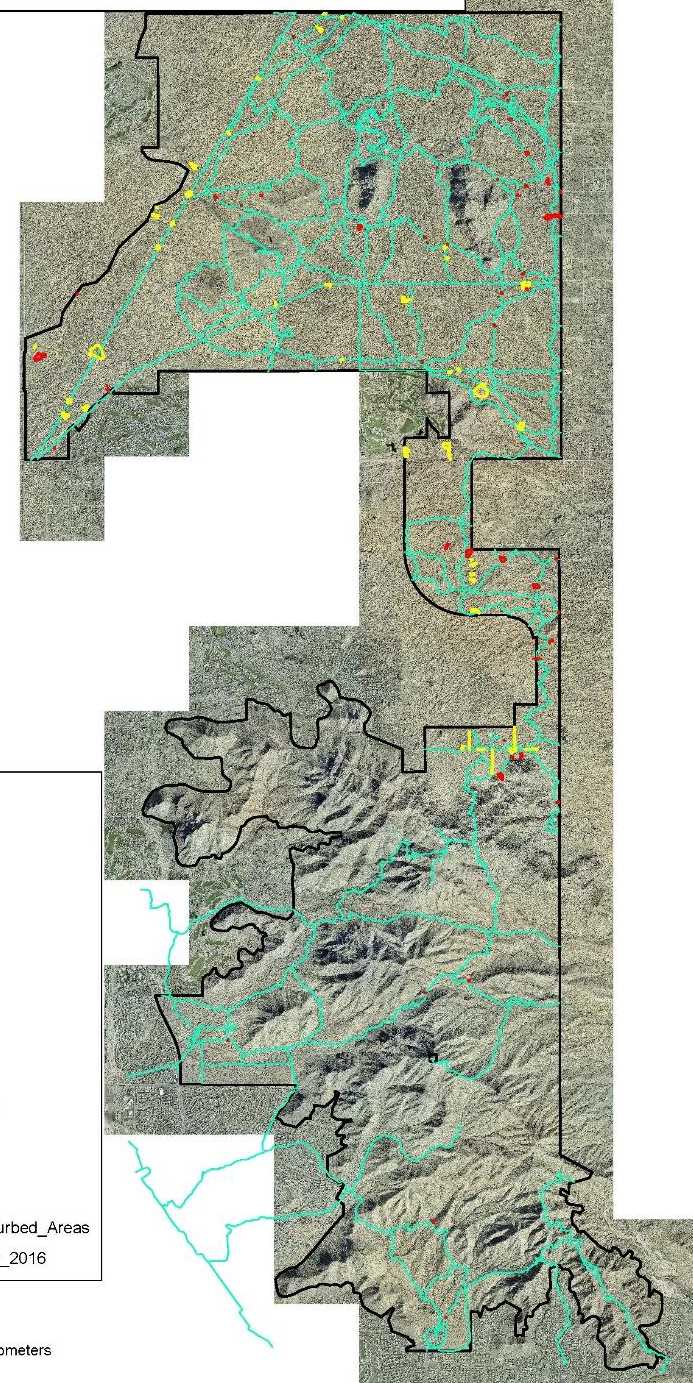
Legend

Polygons_Finalists

Type

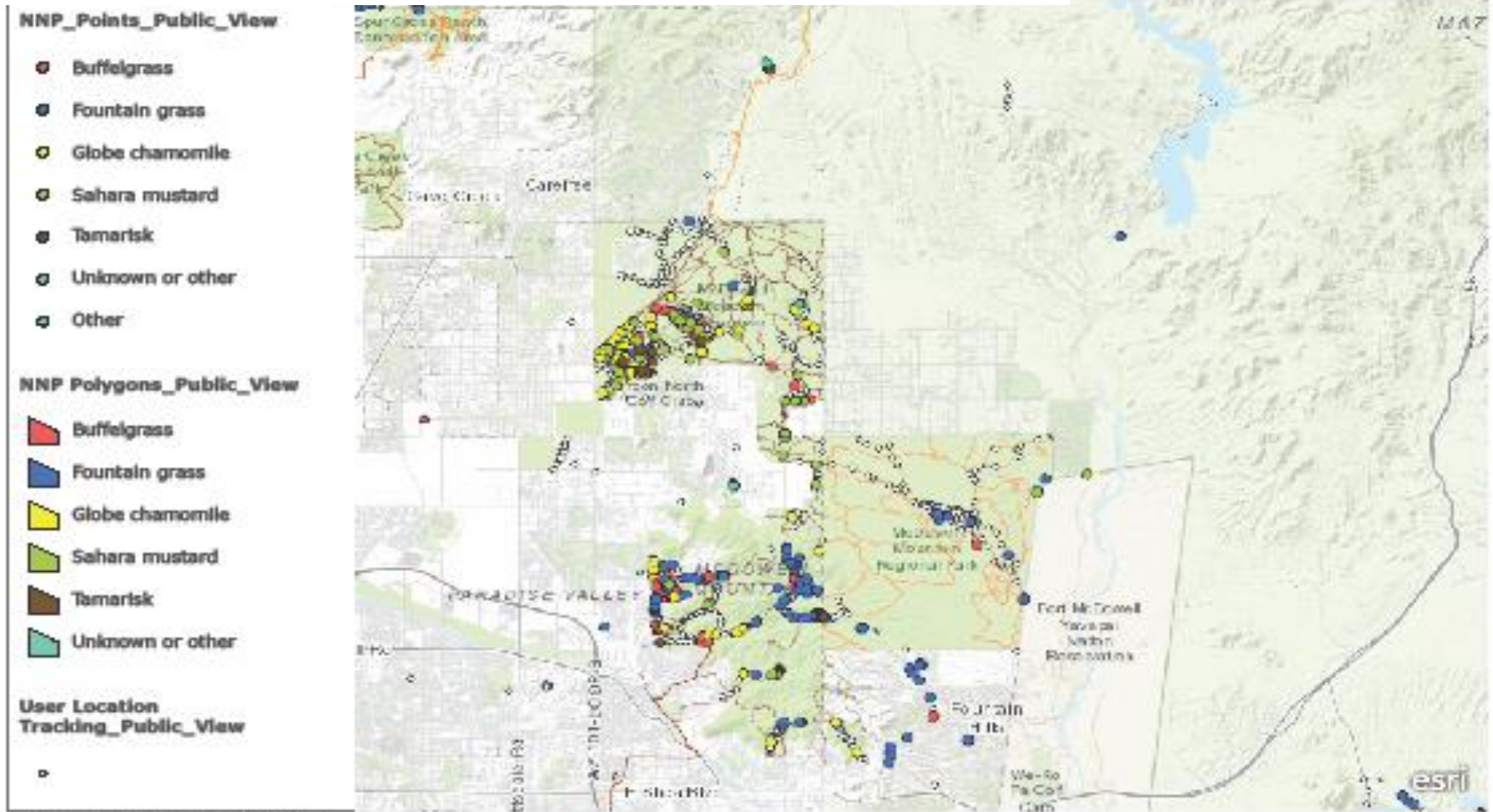
- Adjacent to trail
- Old impacted area
- Other: Bal Rock N
- Other: Bal Rock S
- Other: Bell Pass
- Other: GM scenic
- Other: abandoned
- Other: drainage area
- Other: fallen mshrm
- Trail junction
- Unauth trail cluster
- COS_Identified_Disturbed_Areas
- COS_Protected_Dec_2016

1.5 0.75 0 1.5 Kilometers



Non-Native Plants

Regional mapping



NNP points and polys, public view




MCDOWELL
SONORAN
CONSERVANCY

Non-Native Plants



Three prong strategy

- Survey
- Remove
- Monitor (and re-treat!)




© 2019 McDowell Sonoran Conservancy

Desert Tortoise

- Long-lived 60-80 years
- Herbivore
- Hillside homes are rocks and boulders
- Legally protected



EXPLORING THE STONEMAN ROAD THE PLACES



Map of the Stoneman Road area showing various locations and landmarks.

EXPLORING THE STONEMAN ROAD THE PEOPLE



Historical photographs and text related to the Stoneman Road area.

Forestry grant....

Arid Lands Symposium



Children's Learning & Play Festival



Junior Citizen Science Festival



Thank You!



@lynnejanneyrussell



MCDOWELL
SONORAN
CONSERVANCY