

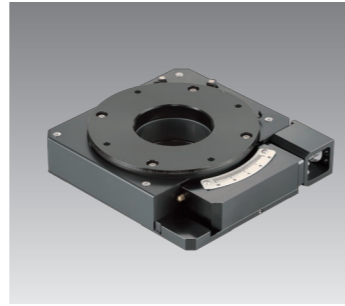
IKO

New

Rotation Stage

SK...W

A new rotation stage
with precision positioning!



NIPPON THOMPSON CO., LTD. (JAPAN)

Head Office : 19-19, Takanawa 2-chome, Minato-ku,
Tokyo, 108-8586, Japan
Phone : +81 (0)3-3448-5850
Fax : +81 (0)3-3447-7637
E-mail : ntt@ikonet.co.jp
URL : https://www.ikonet.co.jp/eg/
Plant : Gifu, Kamakura



IKO INTERNATIONAL, INC. (U.S.A.)

East Coast Operations (Sales Head Office)

91 Walsh Drive,
Parsippany, NJ, 07054,
U.S.A.
Phone : +1-973-402-0254
Toll Free : +1-800-922-0337
Fax : +1-973-402-0441
E-mail : eco@ikonet.co.jp



Midwest Operations

101 Mark Street, Unit-G,
Wood Dale, IL, 60191,
U.S.A.
Phone : +1-630-766-6464
Toll Free : +1-800-323-6694
Fax : +1-630-766-6869
E-mail : mwo@ikonet.co.jp

Minnesota Sales Office

1500 McAndrews Road West, Suite 210,
Burnsville, MN, 55337,
U.S.A.
Phone : +1-952-892-8415
Toll Free : +1-800-323-6694
Fax : +1-952-892-1722
E-mail : mwo@ikonet.co.jp

West Coast Operations

9830 Norwalk Boulevard, Suite 198,
Santa Fe Springs, CA, 90670,
U.S.A.
Phone : +1-562-941-1019
Toll Free : +1-800-252-3665
Fax : +1-562-941-4027
E-mail : wco@ikonet.co.jp

Silicon Valley Sales Office

1500 Wyatt Drive, Suite 10,
Santa Clara, CA, 95054,
U.S.A.
Phone : +1-408-492-0240
Toll Free : +1-800-252-3665
Fax : +1-408-492-0245
E-mail : wco@ikonet.co.jp

Southeast Operations

3235 Satellite Boulevard Building 400, Suite 230,
Duluth, GA, 30096,
U.S.A.
Phone : +1-770-418-1904
Toll Free : +1-800-874-6445
Fax : +1-770-418-9403
E-mail : seo@ikonet.co.jp

Southwest Operations

8105 N. Beltline Road, Suite 130,
Irving, TX, 75063,
U.S.A.
Phone : +1-972-929-1515
Toll Free : +1-800-295-7886
Fax : +1-972-915-0060
E-mail : swo@ikonet.co.jp

IKO THOMPSON BEARINGS CANADA, INC.(CANADA)

731-2425, Matheson Boulevard East, 7th floor,
Mississauga, Ontario, L4W 5K4, Canada
Phone : +1-905-361-2872
Fax : +1-905-361-6401
E-mail : itc@ikonet.co.jp

IKO BRASIL SERVIÇOS EMPRESARIAIS EIRELI (BRAZIL)

Rua Frei Caneca 1407,
Condominio Edificio Barão de Monte Cedro,
Cjs. 801/802, Consolação, São Paulo- SP
Cep : 01307-909
Phone : +55 (0)11-2366-3033
E-mail : itb@ikonet.co.jp

NIPPON THOMPSON EUROPE B.V. (EUROPE)

The Netherlands (Sales Head Office)

Keersopstraat 35,
3044 EX, Rotterdam,
The Netherlands
Phone : +31 (0)10-462 68 68
E-mail : nte@ikonet.co.jp



Germany Branch

Mündelheimer Weg 54,
40472 Düsseldorf,
Germany
Phone : +49 (0)211-41 40 61
Fax : +49 (0)211-42 76 93
E-mail : ntd@ikonet.co.jp

Regensburg Sales Office

Im Gewerbepark D 30,
93059 Regensburg,
Germany
Phone : +49 (0)941-20 60 70
Fax : +49 (0)941-20 60 719
E-mail : ntdr@iko-nt.de

Neunkirchen Sales Office

Gruben Str. 95c,
66540 Neunkirchen,
Germany
Phone : +49 (0)6821-99 98 60
Fax : +49 (0)6821-99 98 626
E-mail : ntdn@iko-nt.de

U.K. Branch

2 Vincent Avenue, Crownhill,
Milton Keynes, Bucks, MK8 0AB,
United Kingdom
Phone : +44 (0)1908-566144
Fax : +44 (0)1908-565458
E-mail : sales@iko.co.uk

Spain Branch

Autovia Madrid-Barcelona, Km. 43,700
Polig. Ind. AIDA - Nove A-8, Ofic. 2-1^a
19200-Azuqueca de Henares,
(Guadalajara) Spain
Phone : +34 949-26 33 90
Fax : +34 949-26 31 13
E-mail : nts@ikonet.co.jp

France Branch

Bâtiment le Raphaël-Paris, Nord 2,
22 avenue des Nations
BP54394 Villepinte
95943 ROISSY C.D.G Cedex
France
Phone : +33 (0)1-48 16 57 39
Fax : +33 (0)1-48 16 57 46
E-mail : ntf@ikonet.eu

IKO THOMPSON ASIA CO., LTD. (THAILAND)

1-7 Zuellig House, 3rd Floor,
Silom Road, Silom, Bangrak,
Bangkok 10500, Thailand
Phone : +66 (0)2-637-5115
Fax : +66 (0)2-637-5116
E-mail : ita@ikonet.co.jp

IKO THOMPSON KOREA CO.,LTD. (KOREA)

201, Worldvision Bldg., 77-1, Yeouinaru-ro,
Yeongdeungpo-gu, Seoul, Korea
Phone : +82 (0)2-6337-5851
Fax : +82 (0)2-6337-5852
E-mail : itk@ikonet.co.jp

IKO-THOMPSON (SHANGHAI) LTD. (CHINA)

Shanghai (Sales Head Office)

1608-10, MetroPlaza No.555, LouShanGuan
Road, ChangNing District, Shanghai,
People's Republic of China, 200051
Phone : +86 (0)21-3250-5525
Fax : +86 (0)21-3250-5526
E-mail : ntc@ikonet.co.jp

Beijing Branch

Room1506, Jingtai Tower,
NO.24, Jianguomenwai Avenue,
Chaoyang District, Beijing
People's Republic of China, 100022
Phone : +86 (0)10-6515-7681
Fax : +86 (0)10-6515-7689
E-mail : ntc@ikonet.co.jp

Guangzhou Branch

Room 834, Garden Tower, Garden Hotel
368 Huanshi East Road, Yuexiu District, Guangzhou,
Guangdong
People's Republic of China, 510064
Phone : +86 (0)20-8384-0797
Fax : +86 (0)20-8381-2863
E-mail : ntc@ikonet.co.jp

Wuhan Branch

Room 2300, Truroll Plaza No.72, Wusheng Road,
Qiao kou District, Wuhan, Hubei,
People's Republic of China, 430033
Phone : +86 (0)27-8556-1610
Fax : +86 (0)27-8556-1630
E-mail : ntc@ikonet.co.jp

Shenzhen Branch

Room1808, KEENSTAR Building 18,
Chuangye 2nd Rd 248, Bao'an, Shenzhen, Guangdong,
People's Republic of China, 518081
Phone : +86 (0)755-2265-0553
Fax : +86 (0)755-2298-0665
E-mail : ntc@ikonet.co.jp

Ningbo Office

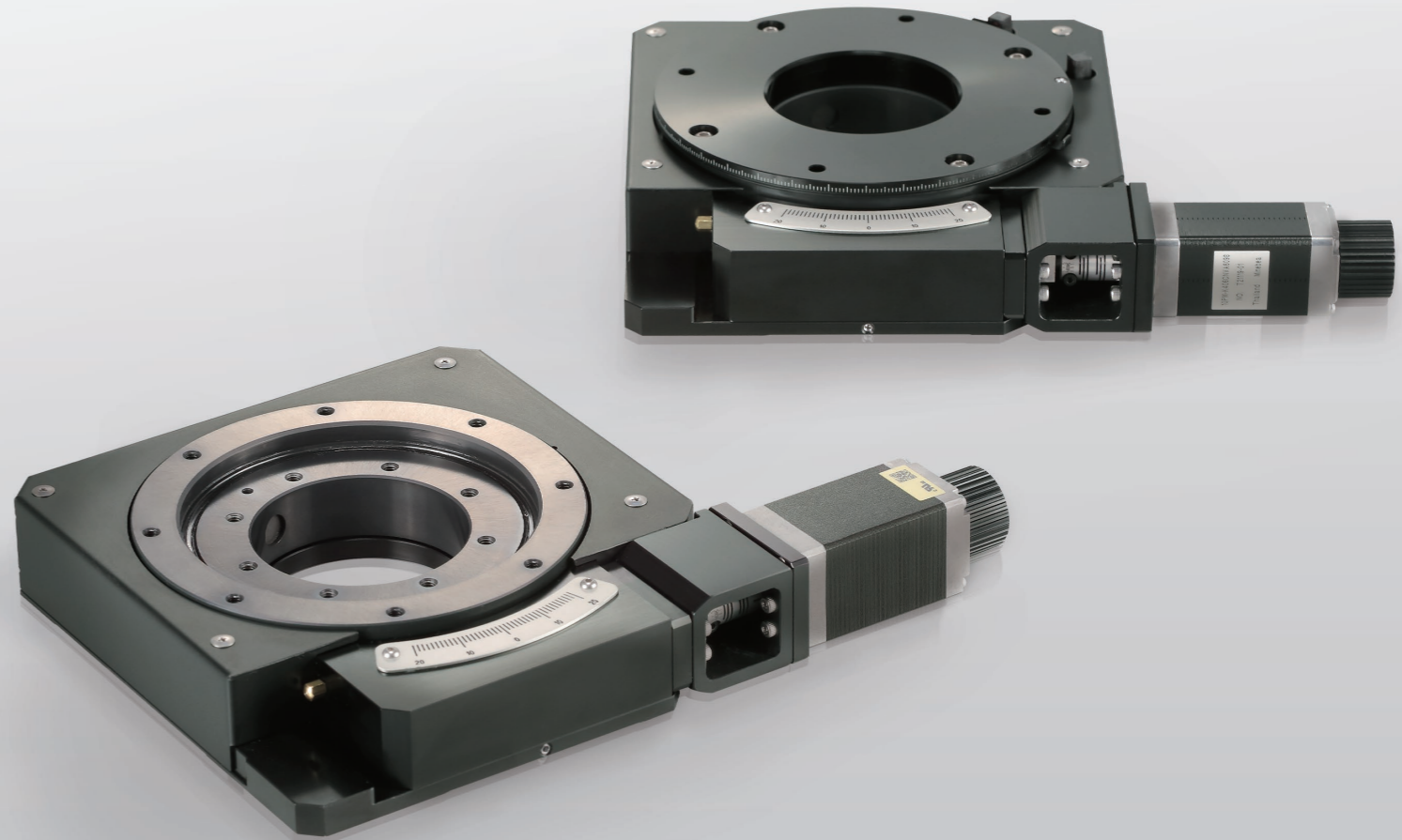
Room 3406, Zhongnongxin Building, No.181,
Zhongshan East Road, Haishu Ward, Ningbo,
Zhejiang,
People's Republic of China, 315000
Phone : +86 (0)574-8718-9535
Fax : +86 (0)574-8718-9533
E-mail : ntc@ikonet.co.jp

Qingdao Office

Room 1111, Building 9, Qingdao Science and
Technology City, No. 7 Wuyang Road,
North District, Qingdao City, Shandong,
People's Republic of China, 266045
Phone : +86 (0)532-8670-2246
Fax : +86 (0)532-8670-2242
E-mail : ntc@ikonet.co.jp

Shenyang Office

2-1203 Tower I, City Plaza Shenyang NO.206,
Nanjing North Street, Heping District, Shenyang,
People's Republic of China, 110001
Phone : +86 (0)24-2334-2662
Fax : +86 (0)24-2334-2442
E-mail : ntc@ikonet.co.jp

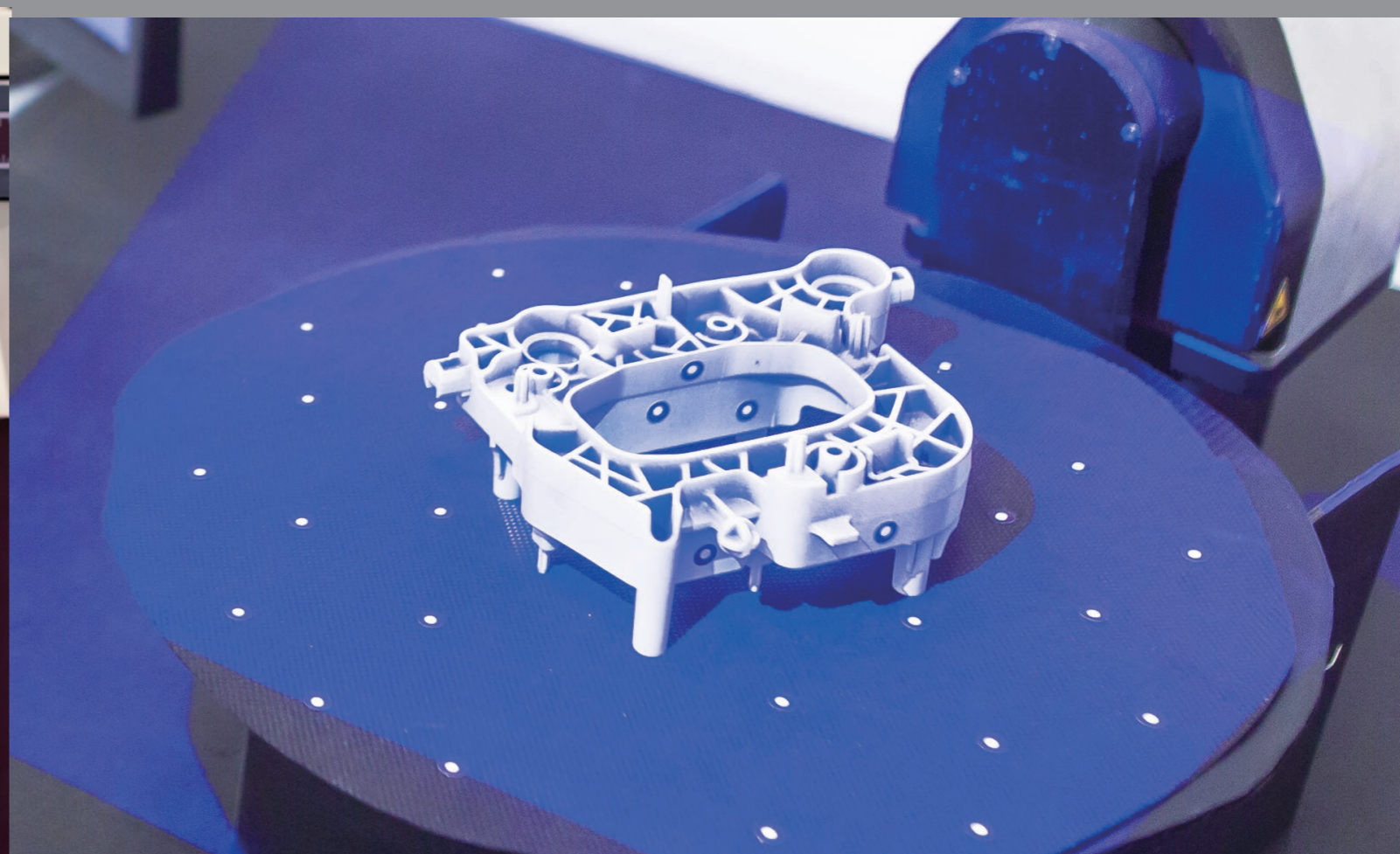
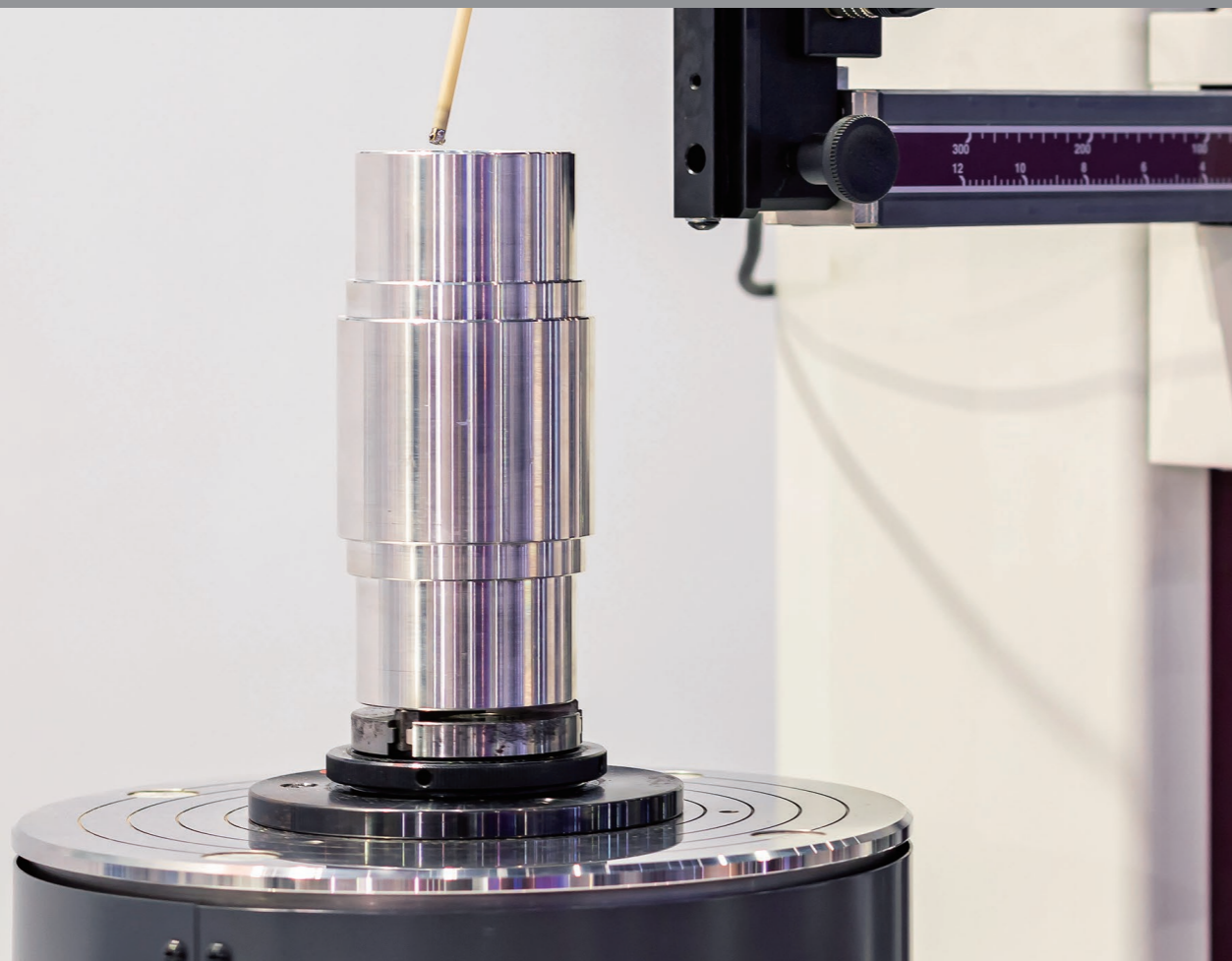


* The specifications and dimensions of products in this catalog are subject to change without prior notice. * When these products are exported, the exporter should confirm a forwarding country and a use, and, in case of falling under the customer's requirements, take necessary procedures such as export permission application. * Although all data in this catalog has been carefully compiled to make the information as complete as possible, NIPPON THOMPSON CO., LTD. shall not be liable for any damages whatsoever, direct or indirect, based upon any information in this catalog. NIPPON THOMPSON CO., LTD. makes no warranty, either express or implied, including the implied warranty of merchantability or fitness for a particular purpose. * Reproduction and conversion without permission are prohibited.



ISO 9001 & 14001 Quality system registration certificate

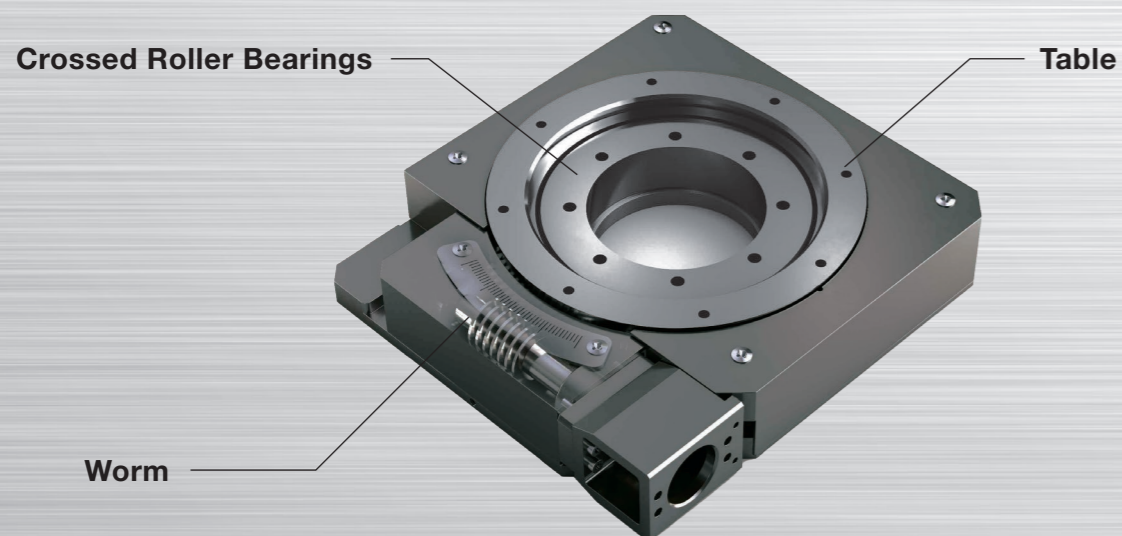




The new SK···W Rotation Stage provides smooth positioning with high accuracy and high rigidity!

SK···W Structure

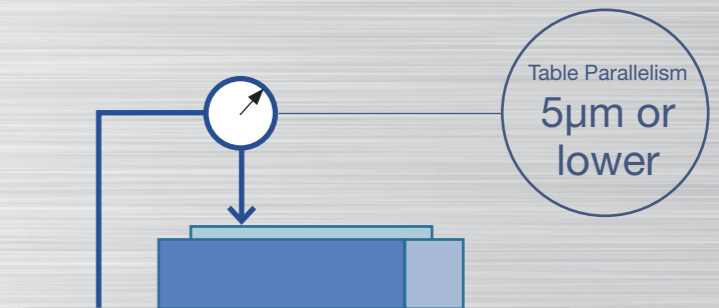
The SK···W is an unlimited rotation stage that employs a worm gear mechanism. IKO Crossed Roller Bearings are used in the rotation guiding parts and utilized directly as a table to achieve high-precision rotational runout, high rigidity and a low profile.



SK···W Features

High Accuracy

IKO Crossed Roller Bearings are used in the rotation guiding parts and can achieve deflection on the table upper surface of 5 μ m or less.



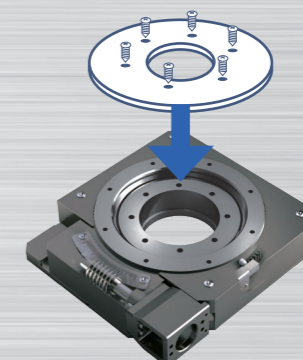
Low Profile, High Rigidity

IKO Crossed Roller Bearings with high rigidity in all directions are used in the rotation guiding parts. In addition, since Crossed Roller Bearings are used directly as the table, a low profile is also achieved.



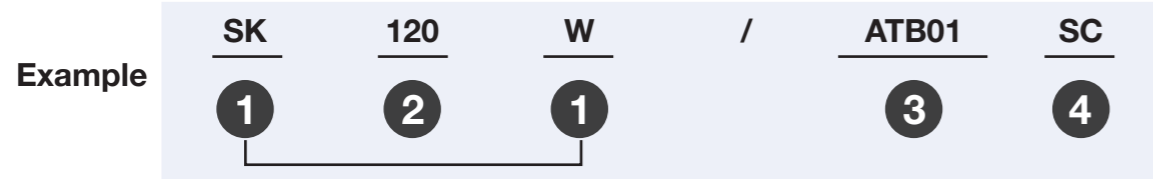
Reduced Design Work

The device table or test object can be mounted directly to the table. The use of mechanical parts reduces the labor hours required to design a rotating table from scratch.



Simply mount the table or test object directly!

Identification Number



1 Model

Model
SK···W: Rotation Stage SK···W

2 Size

Symbol	Table diameter (mm)
120	115 (120)

Remarks: Dimensions in parentheses are for models with a limit sensor.

3 Designation of Motor Attachment

Select a motor attachment symbol from Table 1.

- Motor should be prepared by customer.
- Please specify motor attachment applicable to motor use.
- Couplings shown in Table 2 are temporarily fixed in the main body before shipment. Final position adjustment should be performed by customer.

Table 1 Application of motor attachment

Motor attachment symbol	Motor to be used					Flange (mm)
	Type	Manufacturer	Series	Model	Rated output (W)	
ATB01	Five-phase stepper motor	ORIENTAL MOTOR Co., Ltd.	PK	PK525HPB		□ 28
ATB02	Two-phase stepper motor (bi-polar)	MinebeaMitsumi, Inc.	10PM-K	10PM-K406CNVA6098 (1)		□ 25
ATB03	AC Servomotor	Mitsubishi Electric Corporation	J4	HG-AK0136	30	□ 25

Note (1) Dedicated IKO model number. Available for purchase from NMB Sales Co., Ltd.

Table 2 Coupling models

Motor attachment	Coupling models	Manufacturer	Coupling inertia ($J_c \times 10^{-5} \text{kg} \cdot \text{m}^2$)
ATB01 and ATB02	MSTS-12C-5 × 5	Nabeya Bi-tech Kaisha	0.022
ATB03	XGS-15C-5 × 5	Nabeya Bi-tech Kaisha	0.020

4 Limit Sensor Designation

Symbol	Limit sensor specification
No symbol	No limit sensor (built-in origin sensor is included)
SC	Includes limit sensor (includes upper table)

Specifications / Accuracy

Table 3 Specification

Operating angle range (1) (degrees)	360
Resolution (2) (s)	1.08
Maximum number of table revolutions (min ⁻¹)	5
Maximum number of worm axis revolutions (min ⁻¹)	600
Moment rigidity (s/N · cm)	0.04
Allowable load (3) (N)	50

Note (1) Values shown are for models without a limit sensor. When models with a limit sensor are used, adjustments can be performed to any angle within a range of up to 320 degrees.

(2) The resolution indicates a value when fraction sizes of the motor are 10,000 pulses/rev.

(3) Allowable load refers to the maximum load that can be applied without affecting functions or performance.

Table 4 Accuracy

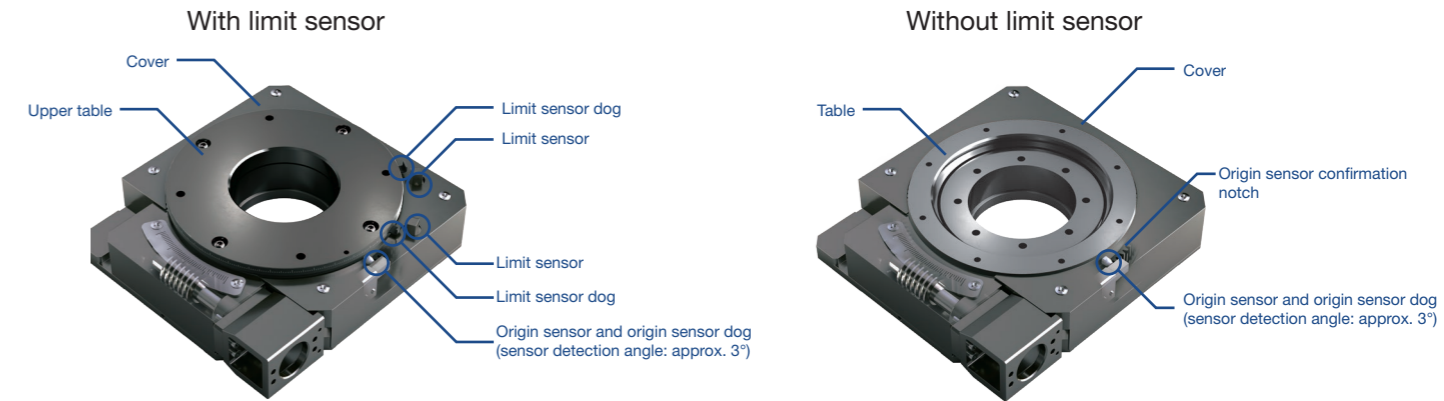
Positioning accuracy (s)	21.6
Positioning repeatability (s)	±7.2
Lost motion (s)	32.4
Backlash (s)	32.4
Parallelism of upper table surface to mounting surface (μm)	20 (40)
Radial runout of table diameter (μm)	5 (15)
Deflection on table upper surface (μm)	5 (25)

Remarks: Values in parentheses are for models with a limit sensor.

Sensor Specification

The SK···W is fitted with an origin sensor (E2S-W13B 1M produced by Omron Corporation) as standard.

There is no precision regulation of the relative positions of the origin sensor and the table mounting hole, precise adjustment of the return to origin position should be performed by performing offset adjustment through a higher-level controller. For models with a limit sensor, a limit sensor (E2S-W14 1M produced by Omron Corporation) and an upper table are added. The position of the limit sensor dog can be adjusted. The operating range can be set to any position up to 320 degrees.



* For models with a limit sensor, check the position of the origin sensor dog with the cover removed.

* The cover cannot be removed after limit sensor dog adjustment. Perform limit sensor dog adjustment after fixing the base of the product to the mounting surface and mounting the cover.

* The origin sensor position can be checked from the cover notch.

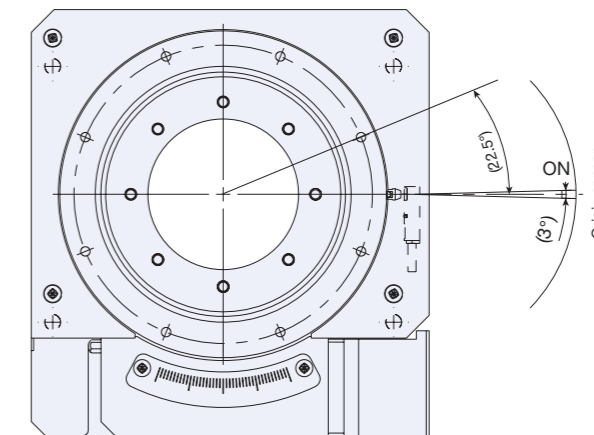


Fig. 1 Origin sensor timing chart

Mounting

To mount the SK···W, remove the cover and use screws to fix the base to the mounting surface.

The typical tightening torque to be used when fixing the SK···W in place is indicated in Table 5.

When high accuracy is required with no vibration and shock, it is recommended to tighten the screws with a lower torque than that indicated in the table and use an adhesive to prevent screws from loosening.

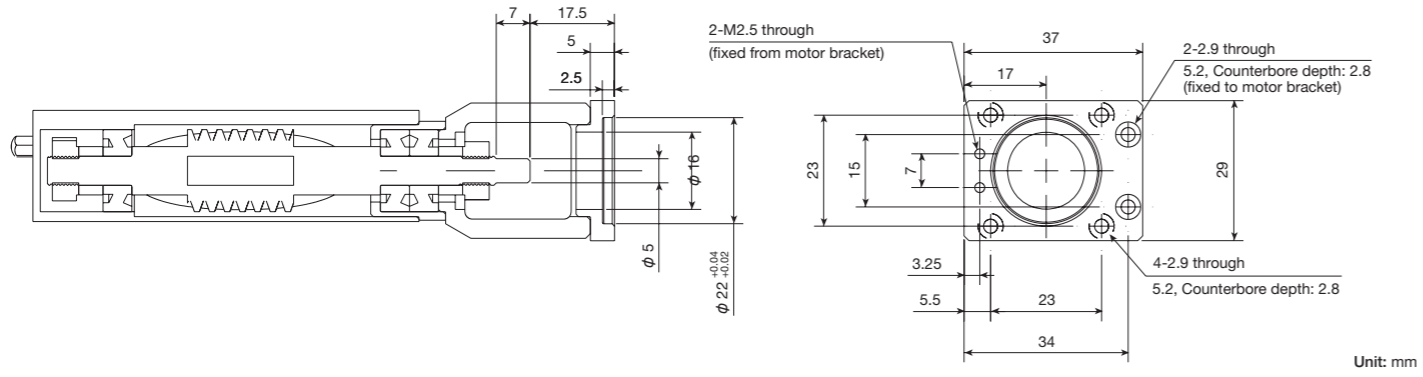
Table 5 Screw tightening torque

unit: N·m

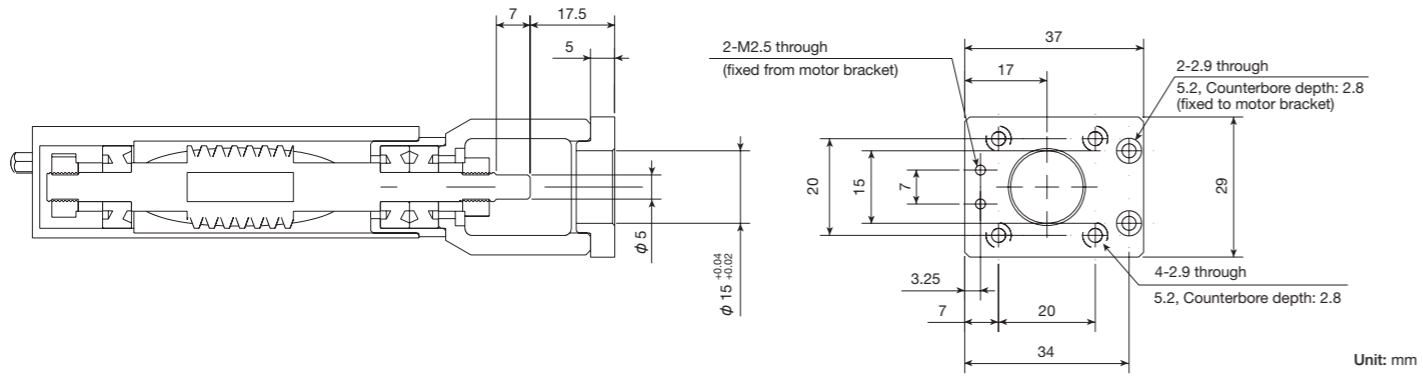
Bolt size	Female thread component	
	Steel	Aluminum alloy
M4 × 0.7	4.0	About 60% of steel value
M5 × 0.8	7.9	About 80% of steel value

Dimensions of Motor Attachment

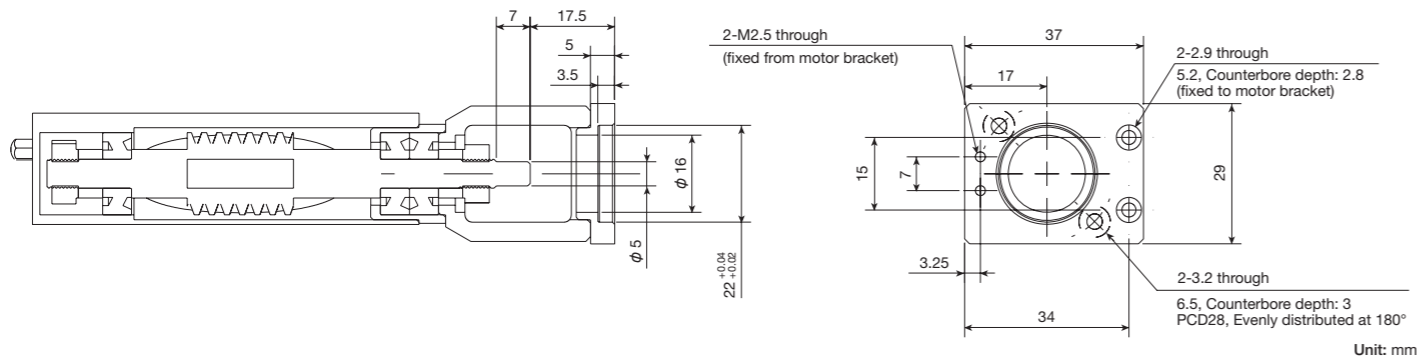
ATB01



ATB02



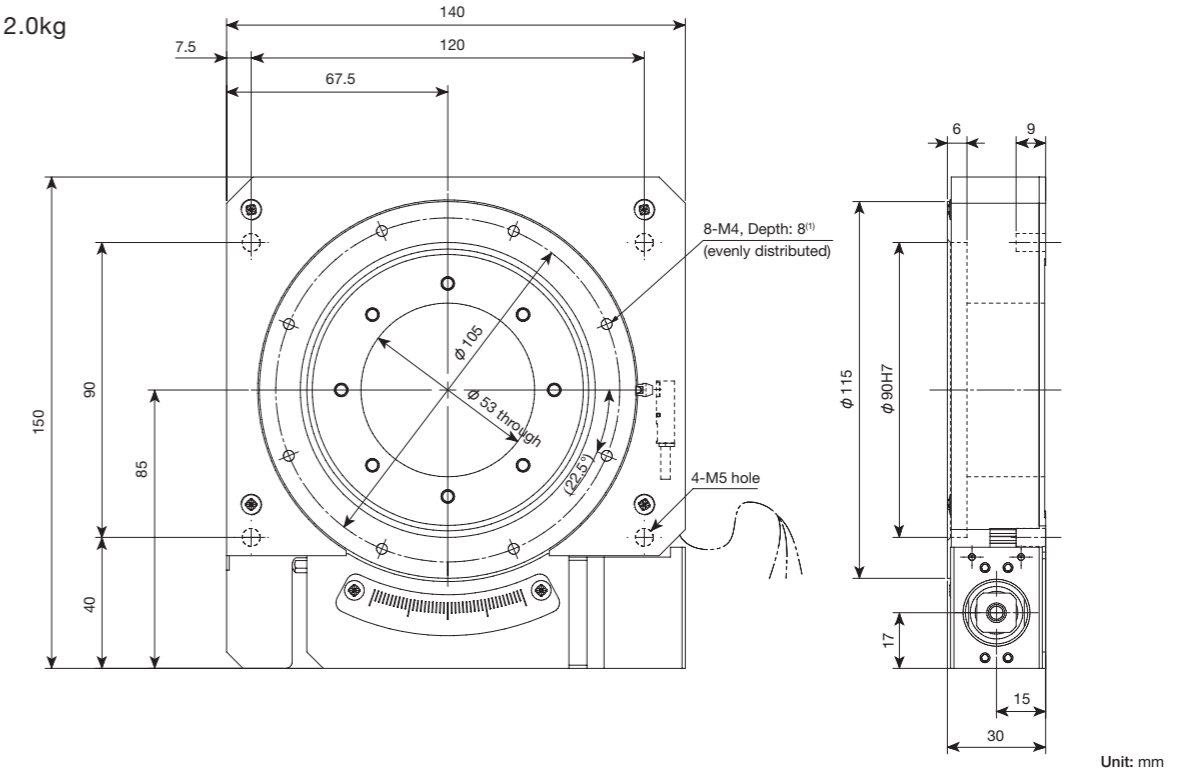
ATB03



Product dimensions

SK120W: Without limit sensor

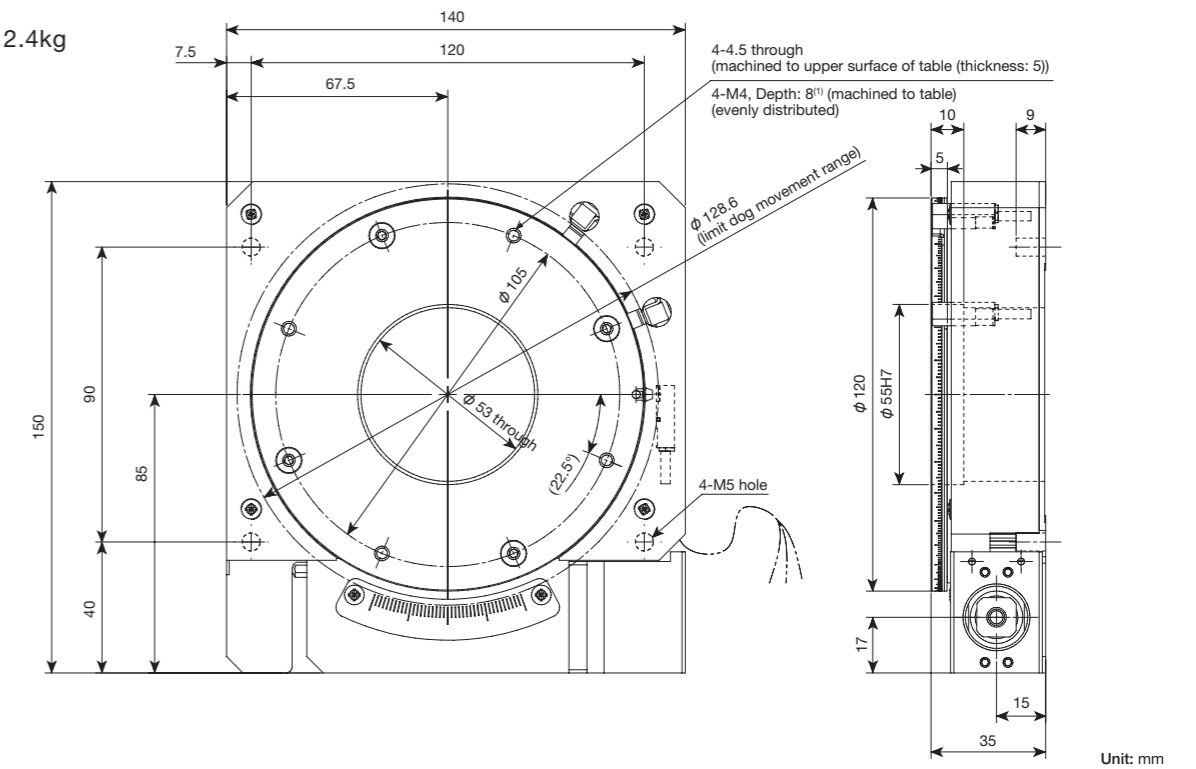
Mass: 2.0kg



Note (1) Inserting mounting screws too deeply may affect the rotation performance of the table. Never insert a screw longer than the depth of the through hole.

SK120W: With limit sensor/with upper table

Mass: 2.4kg



Note (1) Inserting mounting screws too deeply may affect the rotation performance of the table. Never insert a screw longer than the depth of the through hole.