

1 Prevalence and determinants of evidence of silicosis and impaired 2 lung function, among small scale tanzanite miners and the peri- 3 mining community in northern Tanzania

4
5 Alexander W. Mbuya^{1,2,*¶}, Innocent B. Mboya^{3&}, Hadija H. Semvua^{4&}, Simon H. Mamuya^{5&},
6 Patrick J. Howlett^{6,¶}, Sia E. Msuya^{1,3,7 ¶}

7 ¹Department of Community Health, Institute of Public Health, Kilimanjaro Christian
8 Medical University College, Moshi, Tanzania.

9 ²Department of Community Health, Kibong'oto Infectious Diseases Hospital,
10 Kilimanjaro, Tanzania.

11 ³Department of Epidemiology and Biostatistics, Kilimanjaro Christian Medical
12 University College, Moshi, Tanzania.

13 ⁴Kilimanjaro Clinical Research Institute, Kilimanjaro Christian Medical Center, Moshi,
14 Tanzania.

15 ⁵Department of Environmental and Occupational Health, School of Public Health and
16 Social Sciences, Muhimbili University of Health and Allied Sciences, Dar es Salaam,
17 Tanzania.

18 ⁶National Heart & Lung Institute, Imperial College London, Guy Scadding Building,
19 Cale Street, London, SW3 6LY

20 ⁷Department of Community Health, Kilimanjaro Christian Medical Center, Moshi,
21 Tanzania.

22 *Corresponding author: Email: kiletsa13@gmail.com (AWM)

23 ¶These authors contributed equally to this work

24 ~~NOTE: This preprint reports new research that has not been certified by peer review and should not be used to guide clinical practice.~~
~~These authors also contributed equally to this work~~

25 **Abstract**

26 Among mining communities in Tanzania, the limited data available suggests the prevalence of
27 silicosis, obstructive lung diseases (OLD) and restrictive lung disease (RLD) to be around 1.6%,
28 1.9% and 8.8% respectively. Our study therefore aimed to determine the prevalence and factors
29 associated with evidence of silicosis and ILF among tanzanite mining community in northern
30 Tanzania.

31 We conducted a cross-sectional study, involving 330 randomly selected miners and 330
32 conveniently selected non-mine workers from the peri-mining community (PMC) in Mererani
33 mines, northern Tanzania. Evidence of silicosis was defined based on study participants' history
34 of exposure to mining dust and digital chest radiological findings with reference to the 2011 ILO
35 classification of pneumoconiosis. Impaired lung function was determined by spirometry using
36 American Thoracic Society (ATS)/European Respiratory Society (ERS) recommended system 3.
37 Association between evidence of silicosis/impaired lung function and presumed risk factors were
38 determined using binary logistic regression analyses. The study found that 99/330 (30.0%) of miners
39 had evidence of silicosis, of whom 97.0% had accelerated silicosis. Among miners and community
40 members, 75 (11.4%) had ILF, of whom 30 (4.5%) had COPD, 9 (1.4%) had asthma, 29 (4.4%) had
41 restrictive lung disease and 7 (1.1%) had mixed pattern of both obstructive and restrictive lung
42 disease. We found that having a daily income of more than USD 4.3 was associated with lower odds of
43 silicosis (aOR 0.57, 95% CI 0.37-0.89, $p < 0.05$) while ILF was associated with being a miner (aOR 2.06,
44 CI=1.38-3.07, $p < 0.001$).

45 We found a concerning high prevalence of evidence of silicosis despite short durations of
46 exposure among small scale tanzanite miners. Immediate dust control measures including
47 deployment of wet drilling, wearing of personal protective equipment (PPE) and regular
48 monitoring of dust exposure need to be enforced by the OSHA (Tanzania).

49

50 **Key words:** silicosis, impaired lung function, chronic obstructive pulmonary diseases, restrictive
51 lung diseases, miners, small-scale miners, tanzanite, Tanzania

52

53

54

55

56

57

58

59

60

61

62

63

64

65

66

67

68

69

70

71

72

73

74

75

76 **Introduction**

77 Silicosis is an ancient, progressive, incurable, but potentially preventable chronic lung disease
78 caused by the inhalation of crystalline silica. The disease occurs following exposure to respirable
79 crystalline silica (RCS) mostly in the mining and manufacturing industries. Three forms of
80 silicosis are described although not distinctly defined. Acute silicosis, the most histopathologically
81 distinct, may occur following between a few months and up to 5 years of heavy exposure to RCS.
82 Accelerated silicosis occurs over 1-10 years with chronic silicosis occurring over longer periods
83 [\[1\]–\[3\]](#). In majority of mining populations, acute silicosis and accelerated disease may be
84 considered rare. Study findings among South Africa (SA) gold miners showed the crude
85 prevalence of chronic silicosis to range between 1.8% to 8.6% [\[4\]](#). Data on silicosis in Tanzania
86 are scarce but the prevalence among miners is estimated at 1.6% [\[5\]](#). Majority of studies, however,
87 are based in large scale miners (LSM) populations. The SSM engage in extraction from ore or
88 mineral deposits using low-impact, potentially short-term, small-footprint, regulated mining
89 operations and technologies that are usually not labour-intensive [\[6\]](#), though sometimes they may
90 be similar to Artisanal Small Scale Miners (ASM) by being labour intensive. Studies of SSM have
91 suggested that prevalence may be up to 29.1% with shorter exposure periods [\[7\]](#), [\[8\]](#). A recent
92 systematic review found a prevalence of between 11 and 37% among small-scale miners [\[9\]](#).
93 Previous evidence of very high silica exposure has been documented in Mererani [\[10\]](#), [\[11\]](#)
94 reflecting simple mechanization comprising of dry pneumatic drills, air blowers, and explosives,
95 with almost no form of dust reduction measures such as wet drilling being deployed or use of PPE.
96 Despite this, the prevalence of silicosis amongst tanzanite miners is unknown.

97 Tuberculosis is common among mining communities, and silicosis has been shown to significantly
98 increase the risk of tuberculosis, particularly in the context of HIV [\[12\]](#), [\[13\]](#). Little is known about
99 tuberculosis rates among SSM, however some evidence available from Ghana suggests the
100 prevalence is high [\[14\]](#) and also recent report among SSM in Mererani has shown the prevalence

101 to be around 7.0% [15]. Both OLD and RLD are associated with occupational dust exposure [16].
102 The prevalence of Chronic Obstructive Pulmonary Diseases (COPD) among individuals exposed
103 to dust in China has been reported to be 32.7% and was noted to be highest among those diagnosed
104 to have silicosis [17]. Underground gold miners in Tanzania have been reported to have OLD
105 prevalence of 1.9% and RLD prevalence of 8.8% [18].

106 Based on the evidence of the occupational risks among the SSM and the clinical experience of the
107 authors, this study aimed to determine the prevalence and factors associated with evidence of
108 silicosis and ILF among tanzanite mining community in northern Tanzania. The aim of the study
109 has been well achieved.

110 **Materials and methods**

111 **Study design and study site**

112 We have previously described in details our study methods [15]. In brief however, we conducted
113 a cross-sectional study in Mererani mines located in Simanjiro district, in northern Tanzania.
114 Simanjiro District is estimated to have a population of 221,211 based on national census of 2012
115 and a population growth rate of 2.4% [19], with a little more than half being located in Mererani
116 ward where the tanzanite mines are found. Mererani is the only place in the world where tanzanite
117 gemstone is being mined at a commercial scale. Mererani town is located about 5 kilometres from
118 the mines and 70 kilometres from Arusha City. The tanzanite mines in Mererani are all fenced
119 with only one, guarded entrance gate. The weather in Mererani area is generally dry and strong
120 winds with frequent change of directions. For this reason, as well as a control group, we chose to
121 evaluate the PMC for dust related diseases.

122 **Study population**

123 The study recruited men aged 18 years and above from two groups: SSM and PMC members.
124 Miners were defined as an individual who goes down the mining pits and engages in various
125 activities including drilling, blasting and shovelling of rocks. As for this study, only SSM engaging
126 with drilling activities were involved, though there is frequent task shifting in which any miner
127 can perform any of the different activities. The PMC were residents of Mererani town engaging
128 in other non-mining activities who have no history of working in the mines. Most miners work
129 shifts lasting between 10 to 12 hours, but some may go up to 48 hours. Our experience is that all
130 underground miners are men; hence only men were recruited as study participants. Miners in
131 Mererani utilize simple mechanization using handheld pneumatic drills, wheelbarrows and sacks,
132 and diesel-based pulley systems. At the time of data collection, there were 100 active mining pits,
133 each with between 70 to 90 SSM, hence a maximum of 9,000 active SSM.

134 **Sample size**

135 Based on 16% estimated (from routine clinical practice) prevalence of silicosis among tanzanite
136 miners in Tanzania, the minimum sample size of 206 participants were selected from the SSM
137 group based on the below formular:

$$138 \quad n = (z/d)^2 * p(1-p)$$

139 whereby:

140 n = minimum sample size

141 z = critical value for 95% confidence interval (1.96)

142 d = degree of precision (0.05)

143 p = estimated prevalence of silicosis (16%)

144 This led to $n = 206.4$, which was then adjusted by +10% for lung function assessment, +10% for
145 TB investigation and addition +30% for data loss, hence total sample came to 325, which was

146 approximated to 330 SSM. The same number was taken for the PMC to make the overall total
147 sample of 660.

148 **Sampling and data collection procedures**

149 Following ethical clearance we introduced the study to mine managers, who agreed to participate.
150 We randomly sampled 22 pits from a coded list of the 100 mining pits. From each selected pit, a
151 coded list of all mine workers was obtained forming the sampling frame. To attain a sample size
152 of 330, and to avoid disruption of ongoing work, we used random sampling to select 15 SSM from
153 each pit. This number of 15 SSM per pit ensured a reasonable number of workers remained to
154 continue with work while the selected ones visited the clinic for disease evaluation.

155 For the PMC, a list of 85 registered streets in Mererani town obtained from the local government
156 authority. From this, a random sample of 22 streets was selected and, in each street, a reference
157 house was established at the street's main junction with the Kilimanjaro International Airport
158 (KIA) to Mererani highway. Houses (being it a shop, health facility or school) were selected
159 consecutively, and from each selected house, individual participants were selected conveniently
160 (as per inclusion and exclusion criteria) until 15 participants per street (cluster) were reached,
161 making a total of 330 participants. For purposes of comparison with the miners, only men were
162 selected as study participants.

163 Participants were scheduled into groups of 20 up to 25 individuals and provided with return
164 transport to the Occupational Health Service Center (OHSC) at Kibong'oto Infectious Diseases
165 Hospital (KIDH), located about 60 kilometres from Mererani town. Procedures performed to the
166 study participants at the OHSC included taking each participant through the questionnaire adapted
167 from Medical Research Council (MRC) United Kingdom (UK) Respiratory Questionnaire (MRC,
168 1986), digital chest X-ray examination (DRGEM Corporation, Korea) and spirometry test using
169 Easy on-PC (NDD Medizintechnik AG, Zurich, Switzerland). The study radiologist (based at
170 KIDH) with extensive experience of interpreting digital chest radiograph of pneumoconiosis read

171 and interpreted the chest X-rays of the study participants based on the 2011 ILO Pneumoconiosis
172 Classification System with a 12-points scale (4 categories and 12 sub-categories). In the absence
173 of the ability to histopathologically confirm acute silicosis and in keeping with previous research
174 [8], in those with chest radiological evidence of silicosis, participants with less than 15 years of
175 exposure were classified as having accelerated silicosis and those with at least 15 years of exposure
176 as having chronic silicosis.

177 The spirometer was calibrated twice per day, using a 3L Volume Calibration Syringe (CRC
178 Medical, DMS Limited, UK). Participants with initial obstructive spirometry results were tested
179 for bronchodilator reversibility. An increase of at least 200mls in FEV₁ following the
180 bronchodilator reversibility test was regarded as a significant response, hence was diagnosed as
181 asthma. Participants who failed to perform the initial spirometry test or could not produce reliable
182 results, were re-scheduled for other examinations in one-week intervals until reliable results were
183 obtained, meaning achieving the acceptability and repeatability criteria. Acceptability was done
184 by evaluating each blow curve i.e. flow-volume and volume-time graphs for good quality. This
185 include a sharp start with no hesitation, maximum inspiration and expiration, absence of air flow
186 cessation, absence of cough, inspiration during the trace & leaks and exhalation lasting for at least
187 6 seconds with less than 50mls being exhaled in the last 2 seconds. Repeatability was assessed by
188 checking (from tests that have achieved the acceptability criteria) the best two values of FEV₁ and
189 FVC to be within 150mls of each other and if FVC is <1litre, then the best values of FEV₁ and
190 FVC to be within 100mls of each other [20].

191 Importantly, unlike in routine clinical practice in which only presumptive (those with symptoms)
192 TB cases are asked to produce sputum, in our study all participants were asked to produce sputum
193 for TB investigation, with a positive GeneXpert MTB/RIF (GeneXpert Dx System, Version 4.8,
194 Cepheid, USA) defining a diagnosis for TB. HIV rapid blood tests (SD BIOLINE HIV-1/2 3.0
195 Standard Diagnostic Inc.) and fasting blood glucose tests (GlucoPlus™, GlucoPlus Inc. Quebec,

196 Canada) were performed. Participants found to have any of the investigated diseases, were
197 enrolled to care and treatment services as per the Ministry of Health (MoH) guidelines.

198 **Data management and analysis**

199 Paper case report forms were entered into Excel. Analysis was performed using Statistical Package
200 for Social Sciences (SPSS) software (IBM SPSS Statistics Version 27). The primary outcomes
201 were presence/absence of evidence of silicosis and presence/absence of ILF while the secondary
202 outcomes were the forms of silicosis (whether it is accelerated or chronic based on the duration of
203 occupational exposure to RCS among those with evidence of silicosis) and the grades of COPD.
204 As per this paper, silicosis was diagnosed based on two key factors i.e. history of a participant
205 being exposed to occupational silica dust and having radiological digital chest X-ray findings
206 consistent with silicosis as diagnosed by a radiologist experienced in this field. The PMC was also
207 assumed to be exposed to the mining dust based on being near to the mines, the practice of leaving
208 the mined rocks above ground in open air and given the environmental characteristics of few
209 vegetation and frequent winds. Impaired lung function comprised of three disease conditions:
210 Obstructive lung disease, restrictive lung disease and mixed (obstructive and restrictive) lung
211 disease. Asthma was diagnosed as an increase of at least 120mls in either of FEV₁ or FVC
212 following bronchodilator reversibility tests among those found to have obstructive lung disease
213 while those with no response/or an increase of less than 120mls in either FEV₁ or FVC on
214 bronchodilator reversibility test, were classified as having COPD.
215 The ATS/ERS recommended system 3 based on defining airways obstruction using FEV₁/FVC <
216 Lower Limit of Normal (LLN) and using Z scores for FEV₁ to classify severity (grades 1 to 5) for
217 COPD were used in this study. The LLN Z-score of -1.64 was used for diagnosis of both COPD,
218 RLD and Mixed COPD/RLD patterns, while for COPD and restrictive diseases grading the FEV₁
219 Z-scores used were: Z-score \geq -2 (grade 1), $-2.5 \leq$ Z-score < -2 (grade 2), $-3 \leq$ Z-score < -2.5
220 (grade 3), $-4 \leq$ Z-score < -3 (grade 4) and Z-score < -4 (grade 5).

221 The association between evidence of silicosis, our primary outcome, and presumed risk factors
222 was determined using a priori logistic regression analysis. The key explanatory variables for
223 inclusion in both models were duration of work in Mererani, history of previous lung disease, TB,
224 smoking and income level. A similar model was developed for impaired lung function. A
225 statistically significant level of $p < 0.05$ was used while $p < 0.001$ was considered as statistically
226 highly significant.

227 **Ethical consideration**

228 Ethical clearance was obtained from the Kilimanjaro Christian Medical University College
229 (KCMUCo) No. 2416 and the Medical Research Coordinating Committee of the National Institute
230 for Medical Research (NIMR) No: NIMR/HQ/R.8a/Vol.IX/3308. Permission to conduct the study
231 was sought from the Permanent Secretary – Presidents’ Office, Regional Administration & Local
232 Government (PS-PORALG), and the owners/managers for the specific mining pits. Written
233 informed consent, translated in Kiswahili language was obtained from each study participant.

234 **Results**

235 **Demographic and clinical characteristics**

236 [Table 1](#) shows the socio-demographic and clinical characteristics of the mining communities in
237 Mererani. The SSM comprises of relatively younger population with a median age of 35 years,
238 compared to the PMC median of 39 years. The SSM have significantly higher proportion of
239 individuals with lower education level compared to the PMC. The SSM have significantly lower
240 duration of working in Mererani with a median duration of 5 years compared to 8.5 years for the
241 PMC. The SSM have a significantly lower median daily income of about USD 2.9 compared to
242 the PMC median of USD 7.2. A higher proportion of the PMC (7.9%) were found to have TB
243 compared 6.1% for the SSM while all (100%) of those with evidence of silicosis were SSM.

244 **Table 1. Socio-demographic and clinical characteristics of the Mining Communities in Mererani**
 245 **(N=660)**

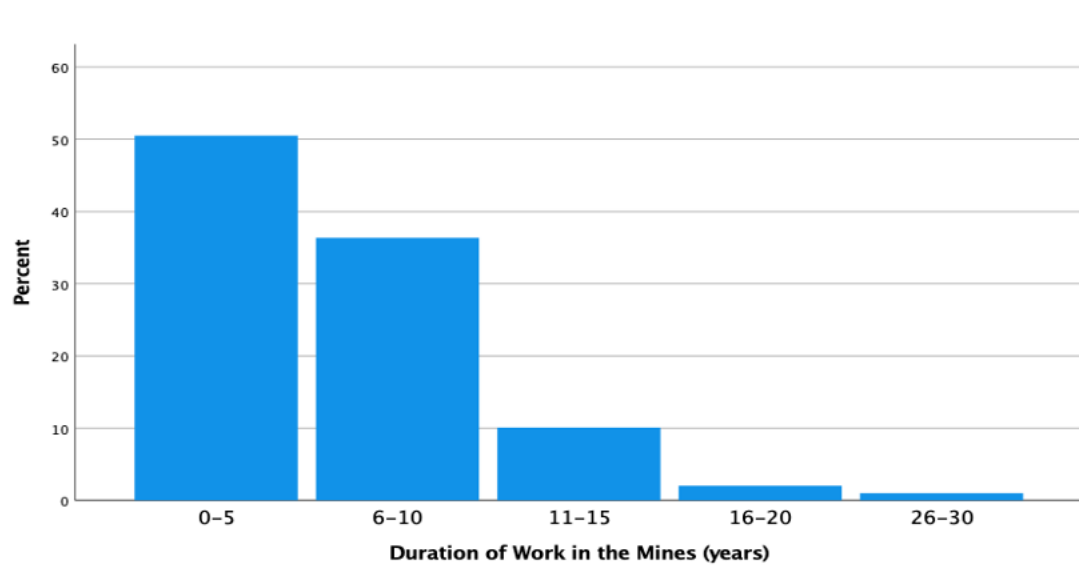
Characteristics	Total	Small Scale Miners (n = 330)	Peri-Mining Community (n = 330)
Age (years)			
Median (IQR)	38 (31.0-45.0)	35.0 (30.0-44.0)	39.0 (32.0-46.0)
18-30	158 (23.9)	92 (27.8)	66 (20.0)
31-40	254 (38.5)	129 (39.1)	125 (37.9)
41-50	180 (27.3)	84 (25.5)	96 (29.1)
>50	68 (10.3)	25 (7.6)	43 (13.0)
Marital Status			
Not in relationship	112 (17.0)	63 (19.1)	49 (14.8)
In a relationship	548 (83.0)	267 (80.9)	281 (85.2)
Education level			
≤Primary	468 (70.9)	272 (82.4)	196 (59.4)
>Primary	192 (29.1)	58 (17.6)	134 (40.6)
Duration of work in Mererani (years)			
Median (IQR)	7 (5-11)	5.0 (4.0 – 7.0)	8.5 (6.0 – 12.0)
≤5 ^a	238 (36.0)	179 (54.2)	59 (17.9)
6-10	254 (38.5)	117 (35.5)	137 (41.5)
>10	168 (25.5)	34 (10.3)	134 (40.6)
Income (USD/day)			
Median (IQR)	4.3 (2.8-8.6)	2.9 (2.2-7.2)	7.2 (4.3-11.5)
>4.3 ^b	432 (65.5)	157 (47.6)	275 (83.3)
≤4.3	228 (34.5)	173 (52.4)	55 (16.7)
Smoking status			
Median duration (years)		10.0 (4.0 – 15.8)	11.0 (5.0 – 17.0)
Smokers	93 (14.1)	60 (18.2)	33 (10.0)

Non-smokers	567 (85.9)	270 (81.8)	297 (90.0)
Previous Lung Diseases			
Yes	351 (53.2)	205 (62.1)	146 (44.2)
No	309 (46.8)	125 (37.9)	184 (55.8)
Tuberculosis			
Yes	46 (7.0)	20 (6.1)	26 (7.9)
No	614 (93.0)	310 (93.9)	304 (92.1)
Lung Function: median (IQR)			
FEV ₁	2.80 (2.27-3.36)	2.85 (2.17-3.42)	2.75 (2.29-3.31)
FVC	3.61 (3.03-4.10)	3.66 (2.97-4.15)	3.53 (3.09-4.02)
FEV ₁ /FVC	0.80 (0.72-0.85)	0.80 (0.71-0.85)	0.81 (0.73-0.85)
HIV status			
Positive	8 (1.2)	6 (1.8)	2 (0.6)
Negative	652 (98.8)	324 (98.2)	328 (99.4)
Evidence of silicosis^c			
Yes	99 (15.0)	99 (30.0)	0 (0.0)
No	561 (85.0)	231 (70.0)	330 (100.0)

246 ^aCut-off duration of exposure to RCS for patients with acute form of silicosis. As acute silicosis requires
 247 histopathological confirmation (in additional to the radiological chest findings) which was not done in this study, this
 248 group has been analysed under ‘accelerated silicosis’ i.e. exposure to RCS for <15years, ^bThe overall median income
 249 of the study participants was USD 4.3 per day. ^cEvidence of silicosis refers to silicosis diagnosed based only on history
 250 of occupational exposure to RCS and chest radiological findings by digital X-ray.

251 Evidence of silicosis and lung function status

252 [Figure 1](#) shows the duration of work in Mererani mines among the SSM found to have evidence
 253 of silicosis in which round 97% falls under the working duration of less than 15 years, consistent
 254 with findings of accelerated silicosis.



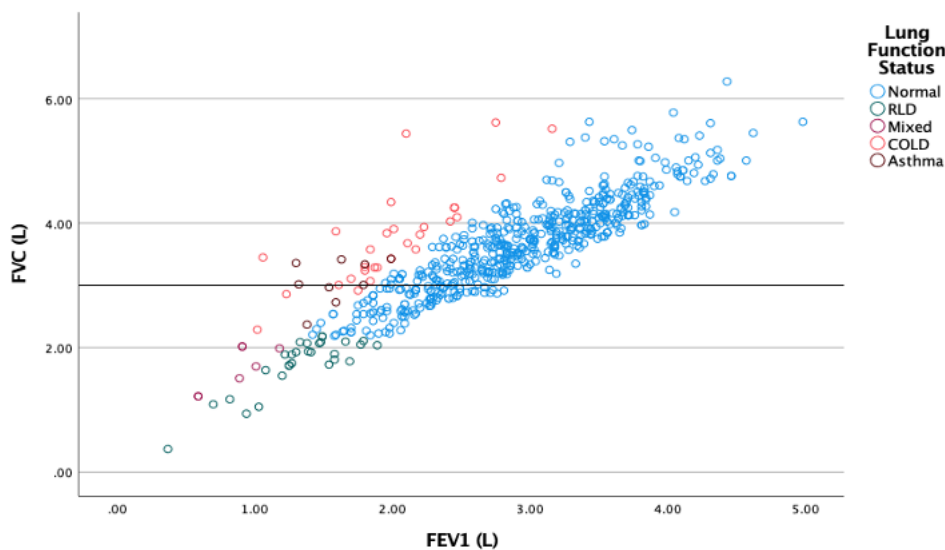
255
 256 Figure 1. Duration of work in Mererani mines among mine workers found to have evidence of silicosis (N=99). Most
 257 miners (>50%) had a working duration of up to 5years while 97% had a working duration of less than 15years.
 258

259 Among the 660 study participants, 75 (11.4%) were found to have various forms of ILF, in which
 260 30 (40.0%) had chronic obstructive lung disease, 9 (12.0%) had asthma, 29 (38.7%) had restrictive
 261 lung disease and 7 (9.3%) had mixed pattern of both obstructive and restrictive lung disease. Of
 262 the 75 participants found to have ILF, 48 (64%) were SSM. [Table 2](#) shows the lung function status
 263 among SSM and the PMC based on the LLN Z-score of -1.64 for FVC, FEV₁ and FEV₁/FVC and
 264 asthma for those with an increase of at least 120mls in either of FEV₁ or FVC following
 265 bronchodilator reversibility tests among those found to have obstructive lung disease. Majority,
 266 39 (52%) of the study participants with ILF were found to have obstructive lung disease, of whom
 267 24 (61.5%) were SSM and 15 (38.5%) were from the PMC.

268 **Table 2. Lung Function Status Among Mining Communities in Mererani (660)**

Lung Function Status	Total	Miners	Peri-Mining Community
Normal	585 (100.0)	282 (48.2)	303 (51.8)
Restrictive	29 (100.0)	19 (65.5)	10 (34.5)
Mixed	7 (100.0)	5 (71.4)	2 (28.6)
Chronic obstructive	30 (100.0)	17 (56.7)	13 (43.3)
Asthma	9 (100.0)	7 (77.8)	2 (22.2)

269
 270 **Figure 2** shows the scatter plot for the various forms of lung function status as function of FVC
 271 and FEV₁. The pattern is almost linear with majority of FVC and FEV₁ intercepts representing
 272 normal lung function findings (blue circles) belonging to the upper right half of the plot. Most of
 273 the rest of the circles for various forms of ILF are found on the lower left region of the scatter
 274 plot.



275
 276 Figure 2. Scatter plot showing the spread of various forms of lung function status as functions of FVC and FEV₁
 277 (N=660)

278
 279 **Table 3** shows the grades (severity) of impaired lung function based on ATS/ ERS recommended
 280 system 3 using Z scores for FEV₁. Majority 50 (84.7%) of those with ILF had mild (grade 1)
 281 disease, of whom 27 (54.0%) were miners and 23 (46.0%) were from PMC.

282 **Table 3. Grades of impaired lung function among those with COPD and RLD among mining**
 283 **communities in Mererani (N=59)**

Grades of ILF	Total	Chronic Obstructive Lung Disease			Restrictive Lung Disease	
		Mine workers	Peri Mining Community	Mining Community	Mine workers	Peri Mining Community
1 – Mild	50 (84.7)	16 (94.1)	11 (84.6)	16 (84.2)	7 (70.0)	
2 – Moderate	7 (11.9)	1 (5.9)	2 (15.4)	3 (15.8)	1 (10.0)	

3 – Mod. Severe	1 (1.7)	0 (0.0)	0 (0.0)	0 (0.0)	1 (10.0)
4 – Severe	1 (1.7)	0 (0.0)	0 (0.0)	0 (0.0)	1 (10.0)
5 – Very Severe	0 (0.0)	0 (0.0)	0 (0.0)	0 (0.0)	0 (0.0)
Total	59 (100)	17 (100)	13 (100)	19 (100)	10 (100)

284

285 **Factors associated with evidence of silicosis**

286 Crude and adjusted associations between a set of predictors and evidence of silicosis among the
 287 mining communities in Mererani are shown in [table 4](#). Those earning above USD 4.3 per month
 288 had 43% lower odds of having evidence of silicosis (aOR 0.57, CI=0.37-0.89, p=0.013).

289 **Table 4. Factors Associated with Evidence of Silicosis among Mining Communities in Mererani**
 290 **(N=660)***

Variable	cOR (95%CI)	p-value	aOR (95%CI)	p value
Working duration in Mererani (years)				
<15	2.38 (0.93-6.07)	0.070	2.04 (0.78-5.34)	0.147
≥15	Ref.		Ref.	
Income (USD/day)				
>4.3	0.50 (0.33-0.77)	0.002	0.57 (0.37-0.89)	0.013
≤4.3	Ref.		Ref.	
Smoking status				
Smokers	0.91 (0.48-1.71)	0.766	0.90 (0.47-1.73)	0.755
Non-smokers	Ref.		Ref.	
Tuberculosis				
Yes	0.68 (0.26-1.75)	0.419	0.66 (0.25-1.75)	0.408
No	Ref.		Ref.	
Lung Function Status				
Restrictive	0.62 (0.24-1.56)	0.307	0.62 (0.24-1.62)	0.333
Mixed	0.21 (0.05-0.98)	0.046	0.25 (0.05-1.18)	0.080
Obstructive	0.64 (0.26-1.62)	0.643	0.61 (0.24-1.56)	0.299

Asthma	0.32 (0.08-1.31)	0.114	0.41 (0.10-1.69)	0.216
Normal	Ref.		Ref.	
HIV status				
Positive	1.91 (0.38-9.59)	0.433	1.97 (0.38-10.22)	0.418
Negative	Ref.		Ref.	
Diabetes Mellitus				
Yes	0.88 (0.33-2.31)	0.795	0.92 (0.34-2.50)	0.874
No	Ref.		Ref.	

291 *The variable of population i.e. SSM and PMC was omitted since none of the participant from the PMC was found to
 292 have evidence of silicosis.

293 **Factors associated with impaired lung function**

294 [Table 5](#) shows the crude and adjusted odds ratios between ILF and a set of predictors. Mine
 295 workers had more than 2-times higher odds of having ILF compared to the PMC, aOR 2.06,
 296 CI=1.38-3.07, p<0.001.

297 **Table 5. Factors Associated with Impaired Lung Function Among Mining Communities in Mererani (N**
 298 **= 660)**

Variable	cOR (95%CI)	p-value	aOR (95%CI)	p value
Population				
Miners	1.90 (1.37-2.64)	0.000	2.06 (1.38-3.07)	0.000
Peri-mining community	Ref.		Ref.	
Working duration in Mererani (years)				
<15	0.86 (0.51-1.46)	0.584	0.69 (0.40-1.20)	0.186
≥15	Ref.		Ref.	
Income (USD/day)				
>4.3	0.94 (0.67-1.32)	0.734	1.20 (0.83-1.75)	0.333
≤4.3	Ref.		Ref.	
Smoking status				

Smokers	1.67 (1.07-2.61)	0.024	1.52 (0.96-2.40)	0.077
Non-smokers	Ref.		Ref.	
Tuberculosis				
Yes	1.41 (0.77-2.60)	0.266	1.49 (0.80-2.79)	0.209
No	Ref.		Ref.	
Silicosis				
Silicosis	0.65 (0.42-1.00)	0.050	1.11 (0.68-1.79)	0.686
No silicosis	Ref.		Ref.	
Diabetes Mellitus				
Yes	0.94 (0.46-1.90)	0.858	0.734 (0.35-1.53)	0.407
No	Ref.		Ref.	

299

300 Discussion

301 In light of concerns of high rates of silicosis and ILF, our study aimed to investigate the prevalence
 302 of, and risk factors for, silicosis and ILF amongst small scale tanzanite mining community i.e.
 303 both miners and PMC. In our study we found that 99/330 (30.0%) of miners had evidence of
 304 silicosis, of whom 97.0% had accelerated silicosis. The prevalence of silicosis declined with
 305 duration of working in the mines. Among miners and community members, 75 (11.4%) had ILF,
 306 of whom 30 (4.5%) had COPD, 9 (1.4%) had asthma, 29 (4.4%) had restrictive lung disease and
 307 7 (1.1%) had mixed pattern of both obstructive and restrictive lung disease. Of the 75 participants
 308 found to have ILF, 48 (64%) were mine workers. In our analysis, we found that having a daily
 309 income of more than USD 4.3 was associated with lower odds of silicosis (aOR 0.57, 95% CI
 310 0.37-0.89, $p < 0.05$) while ILF was found to have a significant statistical association with
 311 occupation with miner having higher odds of ILF (aOR 2.06, CI=1.38-3.07, $p < 0.001$).

312 As would be expected from pattern of occupational exposure to respirable dust between these two
 313 communities, evidence of silicosis was found only among the SSM who are constantly working
 314 in congested underground mines and not among the PMC. Due to the strong winds with frequent

315 change of direction on daily basis (because of low vegetation) in the Mererani area, and the
316 practice of leaving the remains of mining rocks on open grounds, we had hypothesised that the
317 PMC may be exposed, however our recent exposure data [10] and this study suggest this not to be
318 the case. Though the current study sampled only the drillers but as reported by the miners, there
319 is frequent, almost on daily basis, such that any miner can be allocated to undertake any tasks
320 between drilling, blasting, and shovelling. But generally, at any given time around 50% of the
321 miners will be involved with drilling, around 40% involved with shovelling and around 10% work
322 on blasting.

323 Reports have shown that short periods of intense exposure to RCS to be associated with
324 significantly higher risk of diseases, including silicosis [21]. This could be the case with the
325 findings from the current study in which those who worked for less than 15 years (consistent with
326 accelerated silicosis) had more than twice higher odds of evidence of silicosis relative to miners
327 who have worked for at least 15years (though the finding was not statistically significant).
328 However, the current study finding of most (97%) of those with evidence of silicosis to have
329 worked for a duration of less than 15years, could otherwise be explained by the “healthy worker
330 effect”. That as the severity of disease increases with time, exposed workers become too ill,
331 possibly unable to go down the pits anymore, and leave mining work to seek health services
332 (usually at their home residencies) or to change to other kind of occupation out of the mines. A
333 similar pattern of silicosis prevalence has been observed among small-scale gold miners in China
334 [8]. Our study showed a silicosis prevalence of 30%, which is towards the higher end though in
335 keeping with other studies of SSM [9]. Kilimanjaro Christian Medical Centre (KCMC) in Moshi,
336 Tanzania has been managing patients from Mererani mines for years. A retrospective hospital-
337 based data analysis among patients admitted due respiratory conditions at KCMC from August
338 2010 to August 2020, revealed the prevalence of silicosis of 14.3% [22], about half of what has
339 been reported from the current study. Studies among other populations have reported a lower
340 prevalence, including that among stone crushers in Haryana, India of around 6.4% [23] and gold

341 miners in South Africa 19.9% [24]. Our selection criteria meant that current study participants
342 were all engaging in drilling of rocks (though in real practice, there is task shifting in which most
343 of the workers will do different work at varying times, including blasting and shovelling of rocks)
344 and given the complete absence of dust reduction mechanisms, including not using water spray
345 during drilling and poorly ventilated mining pits, it could explain this high level of silicosis
346 observed. Our finding of high prevalence is complemented by the findings of high levels of
347 exposure to respirable crystalline silica (RCS) among the same current study participants [10].
348 Our study may also under-estimate the true prevalence of disease. A study conducted in China
349 among coal workers reported an almost 27% more patients with Coal Workers Pneumoconiosis
350 (CWP) when examined by High Resolution Computed Tomography (HRCT) scan as compared to
351 examination done by Film-Screen Radiography [25]. This difference signifies the variation that
352 may arise because of different diagnostic techniques, hence the possibility of an even higher
353 burden of silicosis finding in the current study if HRCT was used.

354 The current study finding of evidence of silicosis being associated with income level could be
355 explained by idea that miners who, for different reasons, have higher income (being it from the
356 mining work or other sources) usually spend less time underground compared to the rest of the
357 miners, hence less exposed to RCS and therefore less chances of developing silicosis. The SSM
358 don't have regular salaries, they have entered into agreement with mine managers to get a certain
359 percentage, usually around 5% of the sales to share among all the workers once a gemstone is
360 found. In contrast to a recent study in Rutsiro, Rwanda [26] average earnings in Mererani were
361 relatively low with the majority of miners on <4.3 USD/day. In the Rwandan study, reported SSM
362 to have not only regular monthly salaries but the salary being relatively good to the extent of
363 attracting workers from other sectors like construction to the mining sector. Among these SSM
364 interviewed about ill health related to the mining activities, 85% reported dust to be a key
365 challenge, of whom 65% reported silicosis as a major health challenge [26]. While improving
366 workers' income should be prioritized, this should go hand in hand with improvement of the

367 working environment to ensure the individuals who are rushing in the mines for better paying jobs
368 are in a safe working condition.

369 The current study report 11.4% of the study participants to have ILF comprising of COPD,
370 Asthma, RLD or mixed OLD/RLD). The prevalence of ILF appears to be slightly higher among
371 miners than the PMC, although the study was likely underpowered to investigate this fully. The
372 higher prevalence of ILF among miners could be associated with the occupational exposure to
373 respirable dust. Our group has already demonstrated very high exposures to respirable crystalline
374 silica among miners, and low exposures among PMC [10]. It may also be related to a higher
375 prevalence of smoking (18% vs 11%) among the miners compared to the PMC. The prevalence
376 of ILF reported in our study is broadly similar to those reported in other studies. Retrospective
377 cross-sectional analysis of hospital data at KCMC in Moshi, Tanzania showed COPD and asthma
378 to rank the fourth and sixth respectively as common diseases among patients admitted with
379 respiratory conditions (that include SSM from Mererani), though mining accounted for just a small
380 percentage among those with COPD and none among those with asthma [22]. A pilot study to
381 assess respiratory health among community residing near to gold mines waste in Johannesburg
382 South Africa which defined levels of exposures based on distance from the mine waste as high
383 (home <500m), moderate (500m–1.5km) and low (>1.5km), showed the prevalence of COPD to
384 be more common in the high exposure group (18.6%) relative to the medium exposure (10.2%)
385 and low exposure (10.6%) groups [27]. Compared to the current study, the PMC (located about
386 5km from the tanzanite mines) will belong to the low exposure group residing > 1.5km from the
387 mines' waste. A study report among non-smokers coal workers (both underground and surface) in
388 USA showed the prevalence of obstructive lung disease of 7.7% which went up to 16.4% among
389 those with CWP [28] while another report among miners in Western Australia reported a
390 prevalence of 6.3% [29].

391 A univariate analysis of association for a study conducted in China reported COPD to be
392 associated with exposure to silica dust, pneumoconiosis stage III and heavy cigarette smoking

393 while on multi-variate analysis of association, COPD was found to be associated with exposure to
394 silica dust and pneumoconiosis stage III [17]. In addition, [30] reported FEV₁ and FVC to be lower
395 among smokers compared to non-smokers. Though the analysis of association in the current study
396 did not segregate the ILF into the sub-types, but smoking was found to be associated with ILF
397 with about 1.7 higher odds of ILF among the smokers. Unlike the current study findings that did
398 not show an association between ILF and duration of work, a study report among iron ore workers
399 in Iran reported duration of work to significantly lower the FVC, FEV₁ and FEV₁/FCV [31].
400 Opposite findings have been reported from a comparison cross-sectional study among stone
401 crushers in Democratic Republic of Congo (DRC), in which the stone crushers (exposed group)
402 had higher FVC and FEV₁ compared to the tax drivers, the unexposed group [32] and also a study
403 among underground gold miners in Tanzania reported that smoking characteristics and history of
404 dust exposure to be not associated with ILF [18].
405 Mine workers with history of suffering from TB in South Africa were reported to have reduced
406 lung function with FEV₁ of about 180mls-lower and FVC of about 120mls-lower relative to those
407 who never suffered TB [33]. As reported in our previous study report [15], the prevalence of TB
408 among the mining communities in Mererani was around 7.0% which is about 18-times higher
409 compared to the national prevalence of around 0.4% (WHO TB burden estimates 2021;
410 <https://www.who.int/teams/global-tuberculosis-programme/data>). Unexpectedly, the TB burden
411 was higher (7.9%) in the PMC compared to 6.1% for SSM. Given the high burden of TB in both
412 SSM and PMC, it is likely that the high prevalence (53.2%) of previous lung disease found in the
413 current study (Table 1), was contributed by previous TB. As has been shown by [34] in their study
414 conducted among adult who have completed TB treatment in Kilimanjaro Tanzania to determine
415 the burden and severity of post tuberculosis lung disease (PTLD), the prevalence of PTLD was
416 found to be 91%.
417 Limitations in this study included: not utilizing CT scan, which is more sensitive than chest digital
418 X-ray in assessing the pulmonary disease, hence could have missed some of the radiological

419 features associated with silicosis. In addition, for the PMC the specific type of an individual's
420 work (aside from being non-miner) was not determined, which could have allowed comparison of
421 investigated diseases in different occupational situations. Only one radiologist read the digital
422 chest X-rays, though has more than 11 years' experience in the field of radiology, including
423 occupational related diseases like silicosis. In addition, using a cross-sectional design could have
424 underestimated the burden of the evaluated diseases.

425 Silicosis is a major health concern among the SSM and ILF is highly prevalent among both SSM
426 and the PMC in Mererani, in northern Tanzania. As silicosis is an incurable but potentially
427 preventable condition, immediate dust control measures including deployment of wet drilling,
428 wearing of PPE and regular monitoring of dust exposure need to be enforced by OSHA (Tanzania).
429 As per the Occupational Safety and Health Act of 2003 [35], the Chief Inspector should take
430 appropriate measures to mine owners not abiding the safety and health measures. To facilitate this,
431 Tanzania should join the ILO/WHO global efforts to end silicosis by 2030. Health facilities,
432 especially those serving the mining communities should establish and strengthen expertise in the
433 management of chronic lung diseases, especially COPD. Longitudinal studies focusing on wider
434 aspects of occupational exposure to hazardous materials and their disease implications should be
435 undertaken in this community.

436

437

438

439

440

441

442

443

444

445 **Acknowledgements**

446 I would like to acknowledge all professors, tutors, and lecturers from the KCMUCo Institute of
447 Public Health for their precious time on imparting new knowledge on me and making close follow
448 up on my academic progress. We would like to thank the LHL International (Oslo, Norway) for
449 their support on all the health services provided to the patients, including transportation to/from
450 the clinic where the investigations were conducted. Our sincere thanks for staff of OHSC at
451 Kibong'oto Hospital for their support and much of the clinical work.

452

453

454

455

456

457

458

459

460

461

462

463

464

465

466

467

468

469

470 **References**

- 471 [1] E. K. Austin, C. James, and J. Tessier, “Early detection methods for silicosis in australia
472 and internationally: A review of the literature,” *Int. J. Environ. Res. Public Health*, vol.
473 18, no. 15, 2021, doi: 10.3390/ijerph18158123.
- 474 [2] M. Ibraheem El Kahlout, I. A. Alshawwa, H. Q. El-mashharawi, and S. S. Abu-Naser,
475 “Silicosis Expert System Diagnosis and Treatment,” *Int. J. Acad. Inf. Syst. Res. ISSN*
476 *2000-002X Vol. 3 Issue 5, May – 2019, Pages 1-8 Silicosis*, vol. 3, no. 5, pp. 1–8, 2019.
- 477 [3] T. Sato, T. Shimosato, and D. M. Klinman, “Silicosis and lung cancer: Current
478 perspectives,” *Lung Cancer Targets Ther.*, vol. 9, pp. 91–101, 2018, doi:
479 10.2147/LCTT.S156376.
- 480 [4] D. Knight, R. Ehrlich, A. Cois, K. Fielding, A. D. Grant, and G. Churchyard, “Predictors
481 of silicosis and variation in prevalence across mines among employed gold miners in
482 South Africa,” *BMC Public Health*, vol. 20, no. 1, pp. 1–12, 2020, doi: 10.1186/s12889-
483 020-08876-2.
- 484 [5] WHC, “Tuberculosis in the Mining Sector in Southern Africa: Report of the
485 Dissemination Workshop for the Evidence Generating Studies Conducted Under the
486 TIMS Grant,” 2017. [Online]. Available: <https://www.timssa.co.za/Portals/0/TIMS>
487 *Dissemination Workshop - Final Report.pdf*.
- 488 [6] O. Sidorenko, R. Sairinen, and K. Moore, “Rethinking the concept of small-scale mining
489 for technologically advanced raw materials production,” *Resour. Policy*, vol. 68, no.
490 101712, pp. 1–8, 2020, doi: 10.1016/j.resourpol.2020.101712.
- 491 [7] D. Moyo *et al.*, “Tuberculosis and silicosis burden in artisanal and small-scale gold
492 miners in a large occupational health outreach programme in Zimbabwe,” *Int. J. Environ.*
493 *Res. Public Health*, vol. 18, no. 11031, pp. 3–11, 2021, doi: 10.3390/ijerph182111031.
- 494 [8] A. T. Lap, M. L. Zhi, W. W. Tze, M. F. Zhen, and I. T. S. Yu, “High prevalence of

- 495 accelerated silicosis among gold miners in Jiangxi, China,” *Am. J. Ind. Med.*, vol. 50, no.
496 12, pp. 876–880, 2007, doi: 10.1002/ajim.20510.
- 497 [9] P. Howlett *et al.*, “Silicosis, tuberculosis and silica exposure among artisanal and small-
498 scale miners: A systematic review and modelling paper,” *PLOS Glob Public Heal.*, vol. 3,
499 no. 9, pp. 1–22, 2023, doi: 10.1371/journal.pgph.0002085.
- 500 [10] A. Mbuya, B. Mboya, H. Semvua, S. Msuya, P. Howlett, and S. Mamuya,
501 “Concentrations of respirable crystalline silica and radon among tanzanite mining
502 communities in,” *Ann. Work Expo. Heal.*, vol. XX, pp. 1–10, 2023, doi:
503 org/10.1093/annweh/wxad062.
- 504 [11] M. Bråtveit, B. E. Moen, Y. J. S. Mashalla, and H. Maalim, “Dust exposure during small-
505 scale mining in Tanzania: A pilot study,” *Ann. Occup. Hyg.*, vol. 47, no. 3, pp. 235–240,
506 2003, doi: 10.1093/annhyg/meg027.
- 507 [12] E. L. Corbett *et al.*, “Mycobacterial disease, HIV and silicosis,” *AIDS*, vol. 14, no. 17,
508 2000.
- 509 [13] R. Ehrlich, P. Akugizibwe, N. Siegfried, and D. Rees, “The association between silica
510 exposure, silicosis and tuberculosis: a systematic review and meta-analysis,” *BMC Public*
511 *Health*, vol. 21, no. 953, pp. 1–18, 2021, doi: 10.1186/s12889-021-10711-1.
- 512 [14] S. A. Ohene, F. Bonsu, Y. Adusi-Poku, F. Dzata, and M. Bakker, “Case finding of
513 tuberculosis among mining communities in Ghana,” *PLoS One*, vol. 16, no. 3 March, pp.
514 1–16, 2021, doi: 10.1371/journal.pone.0248718.
- 515 [15] A. W. Mbuya, I. B. Mboya, H. H. Semvua, S. H. Mamuya, and S. E. Msuya, “Prevalence
516 and factors associated with tuberculosis among the mining communities in Mererani,
517 Tanzania,” *PLoS One*, vol. 18, no. 3 March, pp. 1–16, 2023, doi:
518 10.1371/journal.pone.0280396.
- 519 [16] E. Tavakol *et al.*, “Risk evaluation of construction workers’ exposure to silica dust and
520 the possible lung function impairments,” *Tanaffos*, vol. 16, no. 4, pp. 295–303, 2017.

- 521 [17] Y. Fan, W. Xu, Y. Wang, Y. Wang, S. Yu, and Q. Ye, “Association of occupational dust
522 exposure with combined chronic obstructive pulmonary disease and pneumoconiosis : a
523 cross- sectional study in China,” *BMJ Open*, vol. 10, pp. 1–10, 2020, doi:
524 10.1136/bmjopen-2020-038874.
- 525 [18] M. Rusibamayila, E. Meshi, and S. Mamuya, “Respiratory impairment and personal
526 respirable dust exposure among the underground and open cast gold Miners in Tanzania,”
527 *Ann. Glob. Heal.*, vol. 84, no. 3, pp. 419–428, 2018, doi: 10.29024/aogh.2323.
- 528 [19] NBS, “National Bureau of Statistics, Tanzania,” 2012.
529 <https://www.nbs.go.tz/index.php/en/>.
- 530 [20] PATS, *Certificate of competence. Foundational Spirometry*, 4th Printi. Durban, South
531 Africa: Pan African Thoracic Society, 2020.
- 532 [21] D. Buchanan, B. G. Miller, and C. A. Soutar, “Quantitative relations between exposure to
533 respirable quartz and risk of silicosis,” *Occup. Environ. Med.*, vol. 60, no. 3, pp. 159–164,
534 2003, doi: 10.1136/oem.60.3.159.
- 535 [22] E. Dennis, H. Mussa, M. P. Sanga, P. Howlett, and G. Nyakunga, “Silicosis and
536 silicotuberculosis among respiratory hospital admissions: A cross-sectional survey in
537 northern Tanzania,” *African J. Thorac. Crit. Care Med.*, vol. 29, no. 3, pp. 118–121,
538 2023, doi: 10.7196/AJTCCM.2023.v29i3.269.
- 539 [23] M. B. Govindagoudar *et al.*, “Burden of Silicosis among stone crushing workers in India,”
540 *Occup. Med. (Chic. Ill.)*, pp. 367–371, 2021, doi: doi.org/10.1093/occmed/kqab146
541 ORIGINAL.
- 542 [24] G. J. Churchyard *et al.*, “Silicosis prevalence and exposure-response relations in South
543 African goldminers,” *Occup. Environ. Med.*, vol. 61, no. 10, pp. 811–816, 2004, doi:
544 10.1136/oem.2003.010967.
- 545 [25] J. Xing, X. Huang, L. Yang, Y. Liu, H. Zhang, and W. Chen, “Comparison of high-
546 resolution computerized tomography with film-screen radiography for the evaluation of

- 547 opacity and the recognition of coal workers' pneumoconiosis," *J. Occup. Health*, vol. 56,
548 no. 4, pp. 301–308, 2014, doi: 10.1539/joh.13-0149-OA.
- 549 [26] J. Macháček, M. Schlossarek, and P. Lindagato, "The Livelihood of Artisanal and Small-
550 Scale Miners and Awareness of the Use of 3T Minerals in Rwanda — A Case Study in
551 the Rutsiro District : A Qualitative Assessment," *Int. J. Environ. Res. Public Heal.*, vol.
552 19, no. 12570, pp. 2–14, 2022, doi: doi.org/10.3390/ijerph191912570.
- 553 [27] S. Iyaloo, T. Kootbodien, N. Naicker, S. Kgalamono, K. S. Wilson, and D. Rees,
554 "Respiratory health in a community living in close proximity to gold mine waste dumps,
555 Johannesburg, South Africa," *Int. J. Environ. Res. Public Health*, vol. 17, no. 2240, pp. 1–
556 15, 2020, doi: 10.3390/ijerph17072240.
- 557 [28] L. Kurth, A. S. Laney, D. J. Blackley, and C. N. Halldin, "Prevalence of spirometry-
558 defined airflow obstruction in never- smoking working US coal miners by
559 pneumoconiosis status," *Occup Env. Med.*, vol. 77, no. 4, pp. 265–267, 2020, doi:
560 10.1136/oemed-2019-106213.
- 561 [29] K. Rumchev, D. Van Hoang, and A. H. Lee, "Exposure to dust and respiratory health
562 among Australian miners," *Int. Arch. Occup. Environ. Health*, vol. 96, no. 3, pp. 355–363,
563 2023, doi: 10.1007/s00420-022-01922-z.
- 564 [30] E. Kabir, A. Islam, and M. Taufikuzzaman, "An investigation into respiratory health
565 problems of workers at stone crushing industries in Bangladesh," *J. Heal. Res.*, vol. 32,
566 no. 2, pp. 172–178, 2018, doi: 10.1108/JHR-01-2018-017.
- 567 [31] A. Gholami *et al.*, "Respiratory Symptoms and Diminished Lung Functions Associated
568 with Occupational Dust Exposure Among Iron Ore Mine Workers in Iran," *Open Respir.*
569 *Med. J.*, vol. 14, no. 1, pp. 1–7, 2020, doi: 10.2174/1874306402014010001.
- 570 [32] T. Kayembe-Kitenge *et al.*, "Respiratory health and urinary trace metals among artisanal
571 stone-crushers: A cross-sectional study in Lubumbashi, DR congo," *Int. J. Environ. Res.*
572 *Public Health*, vol. 17, no. 24, pp. 1–12, 2020, doi: 10.3390/ijerph17249384.

- 573 [33] K. Mortimer *et al.*, “Africa’s respiratory ‘Big Five,’” *J. Pan African Thorac. Soc.*, vol. 2,
574 no. 2, pp. 64–72, 2021.
- 575 [34] S. G. Mpagama *et al.*, “The burden and determinants of post-TB lung disease,” *Int. J.*
576 *Tuberc. Lung Dis.*, vol. 25, no. 10, pp. 846–853, 2021, doi: 10.5588/ijtld.21.0278.
- 577 [35] Parliament of the United Republic of Tanzania, “The Occupational Health and Safety Act
578 2003.” Parliament of the United Republic of Tanzania, 2003, [Online]. Available:
579 <https://procedures.tic.go.tz/media/OSHA ACT, 2003.pdf>.
- 580
581
582
583
584
585
586
587
588
589
590
591
592
593
594
595
596
597
598

599 **Supporting information captions**

- 600 1. S1 Fig. 1. Duration of work in Mererani mines among mine workers found to have
601 evidence of silicosis.
- 602 2. S2 Fig. 2. Scatter plot showing the spread of various forms of lung function status as
603 functions of FVC and FEV₁.
- 604 3. S3 Text. Interview schedule.
- 605 4. S4 Text. Consent form.
- 606 5. S5 Data. All collected data.