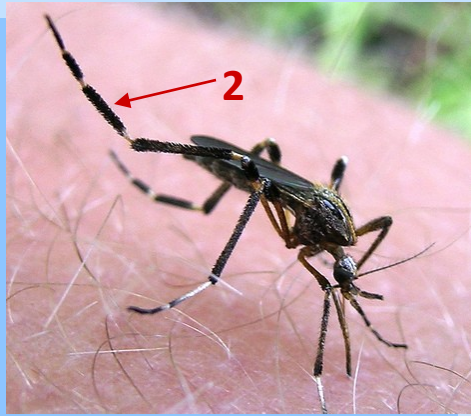


## *Psorophora ciliata*



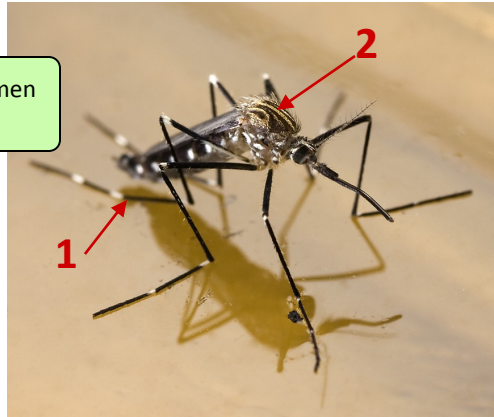
1. Very large (adults over 1/2 inch)
2. Erect scales on legs

- Summer Floodwater
- Larvae Predaceous

## *Aedes japonicus*

1. Black and white scales on legs and abdomen
2. Scutum dark brown with gold stripes

- Container Breeder
- Invasive Species
- Competent Vector



# Common and Distinctive Mosquitoes of Michigan



The MMCA involves careful consideration of mosquito biology and the environment, as well as, based on scientific surveillance. A response to control nuisance mosquitoes may look very different from a response to control disease-vectoring mosquitoes. Source reduction and education is crucial to the success of a program. Additional information is available at [www.michiganmosquito.org](http://www.michiganmosquito.org). Mosquito control districts in Bay, Midland, Saginaw or Tuscola Counties have brochures and other information available.

Created by Tom Wilmot, Ph.D.



## Michigan Mosquito Control Association

PO Box 366, Bay City, MI 48707

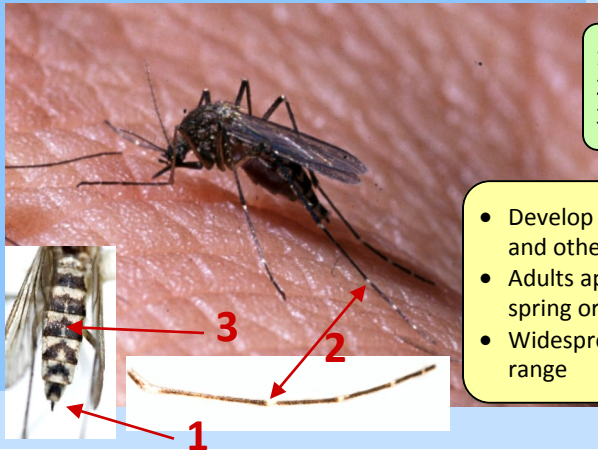
Phone: (989) 894-4555

Fax: (989) 894-0526

Email: [info@mimosq.org](mailto:info@mimosq.org)

[www.mimosq.org](http://www.mimosq.org)

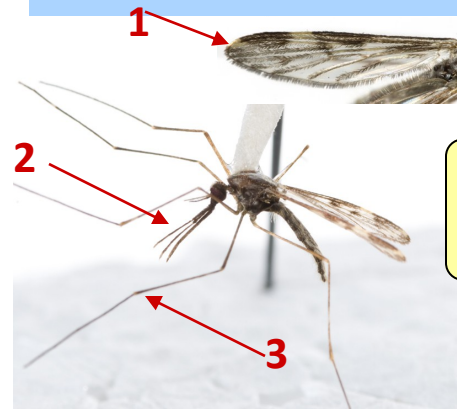
## *Aedes vexans*



1. Pointed abdomen
2. Short white bands on hind legs
3. Indented bands on abdomen

- Develop in floodplains, grassy fields, ditches and other temporarily-flooded areas
- Adults appear one to two weeks after a late spring or summer rain
- Widespread distribution due to long flight range

## *Anopheles punctipennis*



1. Black and white spots on wings
2. Long palps
3. Legs long and dark

- Overwinter as adults
- Found in greatest numbers July—September
- Develop in swamps, marshes and ditches

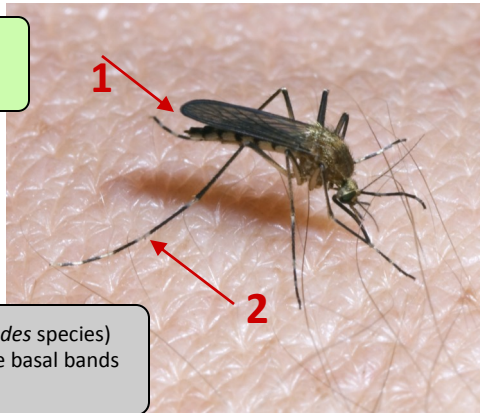
Related Species  
*Aedes quadrimaculatus*—Wing scales all dark

## *Aedes canadensis*

1. Pointed abdomen
2. White bands on hind legs cross the joints

- Develop in vernal woodland pools
- Adults appear rather abruptly in spring and last into early summer

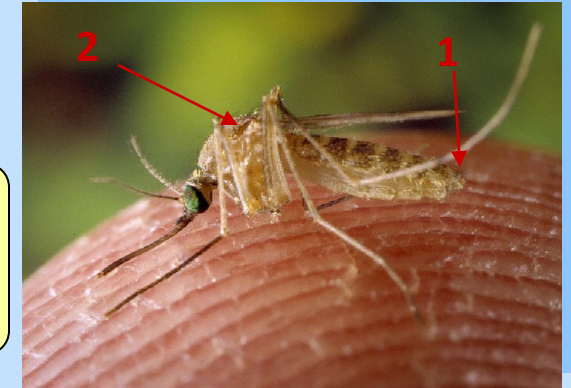
Related Species (together referred to as spring *Aedes* species)  
*Aedes stimulans* group—hind legs with long white basal bands  
*Aedes comunis* group—hind legs with dark scales



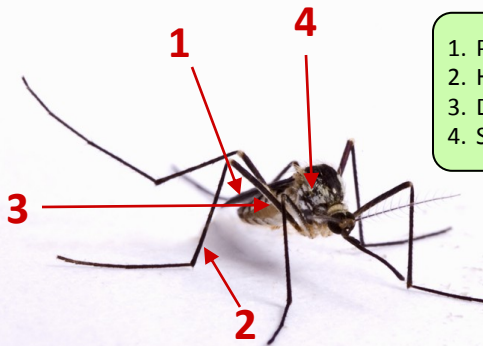
## *Culex pipiens/restuans*

1. Blunt abdomen
2. Pale brown/gold coloration

- Overwinter as adults
- Found in greatest numbers June—September
- Often associated with containers and other man-made habitats



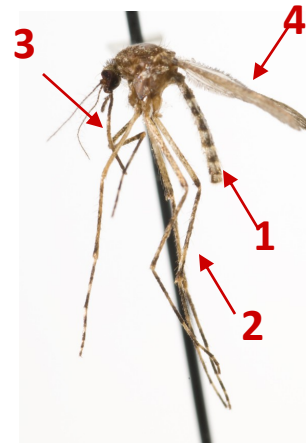
## *Aedes triseriatus*



1. Pointed abdomen
2. Hind legs dark
3. Distinct black and white scales on abdomen
4. Scutum black with silvery scales laterally

- Adults occur from May—September
- Day-biters found primarily in wooded areas/tire yards

## *Coquillettidia peturbans*



1. Blunt abdomen
2. White band mid-tarsus
3. Pale scales mid-proboscis
4. Mixed black and white scales on wings and thorax

- Overwinter as larvae in cattail marshes
- Found in greatest numbers July—August
- Wide distribution due to long flight range