

# *Chenbro*



## *ES340 Chassis User Manual*

## **Copyright**

Copyright © 2007 Chenbro Micom Co., Ltd.. All rights reserved.

*Unless otherwise indicated, all materials in this manual are copyrighted by Chenbro Micom Co., Ltd.. All rights reserved. No part of this manual, either text or image may be used for any purpose other than internal use within purchasing company. Therefore, reproduction, modification in any form or by any means, electronic, mechanical or otherwise, for reasons other than internal use, is strictly prohibited without prior written permission.*

*Chenbro Micom Co., Ltd. reserves the right to make improvement and modification to the products indicated in this manual at any time. Specifications are therefore subject to change without prior notice.*

*Information provided in this manual is intended to be accurate and reliable. However, Chenbro Micom Co., Ltd., assumes no responsibility for its use, nor for any infringements upon the rights of third parties, which may result from its use.*

## **Technical Support**

**Chenbro works hard to offer our customers maximum performance from our chassis. But in case you have any problem with our product you can find supports from the following resources.**

### **Web Support**

*Detail information of our products is in our website. You can find technical updates, installation guides, FAQs, Technical specifications and more. Our web address is: [www.chenbro.com](http://www.chenbro.com).*

### **Email Support**

*You can also fill out the technical support form at our [Technical Support](#) page. Your technical issue inquiries will be sent directly to our support professionals.*

### **Phone Support**

**You can also contact Chenbro HQ or branch office for immediate support; contact information is as following:**

#### **Chenbro HQ**

Tel: 886-2-8226-5500

Fax: 886-2-8226-5423

#### **Chenbro Europe B.V.**

Tel: 31-40-295-2045

Fax: 31-40-295-2044

#### **Chenbro Beijing**

Tel: 86-10-8274-3036~ 39

Fax: 8610-8274-3035

#### **Chenbro Micom (USA) Inc.**

Tel: 1-909-947-3200

Fax : 1-909-947-4300




**Preliminary Edition Aug 2007**

## **Content**

<b>Packing list .....</b>	<b>4</b>
<b>Features .....</b>	<b>6</b>
<b>Technical specification .....</b>	<b>6</b>
<b>Opening the chassis .....</b>	<b>7</b>
<b>Installing devices .....</b>	<b>10</b>
<b>Installing Mini-ITX M/B .....</b>	<b>10</b>
<b>Installing Slim-CDROM .....</b>	<b>10</b>
<b>Installing 3.5" Hot-swap hard drive .....</b>	<b>11</b>
<b>Installing card reader .....</b>	<b>12</b>
<b>Installing heatsink .....</b>	<b>13</b>
<b>Installing riser card .....</b>	<b>14</b>
<b>Installing 2.5" internal hard drive .....</b>	<b>14</b>
<b>Connecting devices .....</b>	<b>15</b>
<b>Connecting SATA2 HDD .....</b>	<b>15</b>
<b>Connecting the power .....</b>	<b>15</b>
<b>Connecting front panel I/O and LEDs .....</b>	<b>16</b>
<b>Power adaptor and backplane .....</b>	<b>18</b>
<b>Power Adaptor Specification .....</b>	<b>18</b>
<b>Power Distribution Board .....</b>	<b>19</b>
<b>SATA2 Hot-swap Backplane .....</b>	<b>20</b>

## Packing List

- **ES340 chassis**

			
<b>70mm fans (2)</b>	<b>SATA2/SAS Backplane (2)</b>	<b>Shield USB 2.0 Cables (1)</b>	<b>SATA 7-pin Cable, 260mm (2)</b>
			
<b>Power Distribution Board (1)</b>	<b>Hot-swap HDD Carrier (4)</b>	<b>Slim-CDROM Carrier (1)</b>	<b>SATA 7-pin Cable, 360mm (2)</b>
			
<b>Intrusion Switch (1)</b>	<b>Split Power Cable, Type-II (1)</b>	<b>Split Power Cable, Type-II (1)</b>	<b>Split Power Cable, Type-II (1)</b>

- **Power adaptor kit**




	
<b>120W Power Adaptor (1)</b>	<b>Power Cord (1)</b>

● **Accessory pack**

			
<b>Cable Tie (1)</b>	<b>Screw Pack for MB (1)</b>	<b>Slim ODD Adaptor (1)</b>	<b>Front Bezel Key (1)</b>
			
<b>Power Cable, Big 4P to Small 4P (1)</b>	<b>Screw Pack for HDD (1)</b>	<b>PCI Add-on Card Bracket (1)</b>	

## **Optional Kits**

*There are optional kits for different purposes, please contact our sales for more information and availability.*

		
<b>PCI 32-bit Riser Card (1)</b>	<b>4-in-1 Card Reader (1)</b>	<b>Active Heatsink for AMD/Intel LV CPU (1)</b>

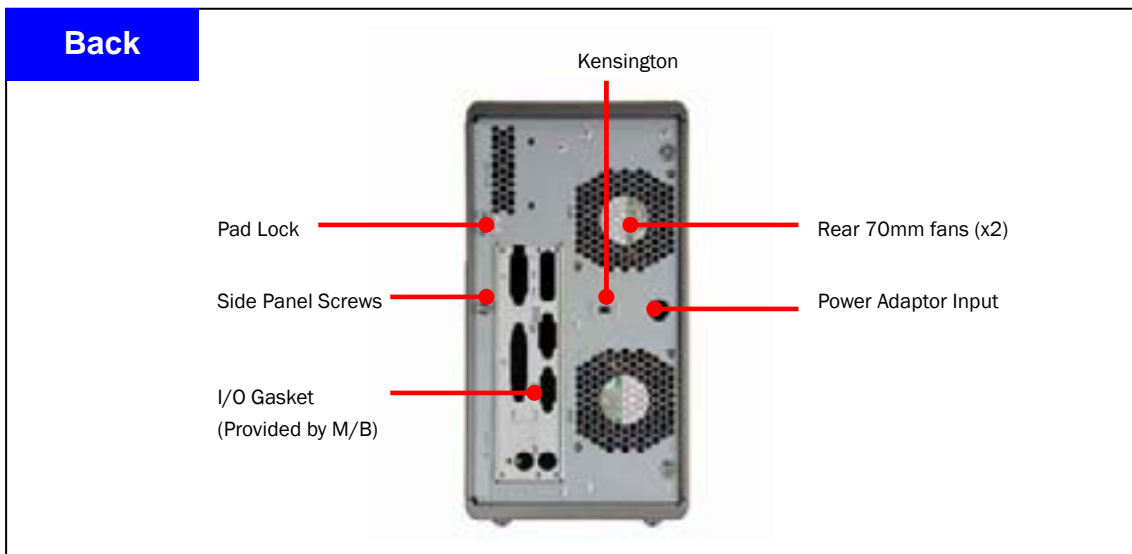
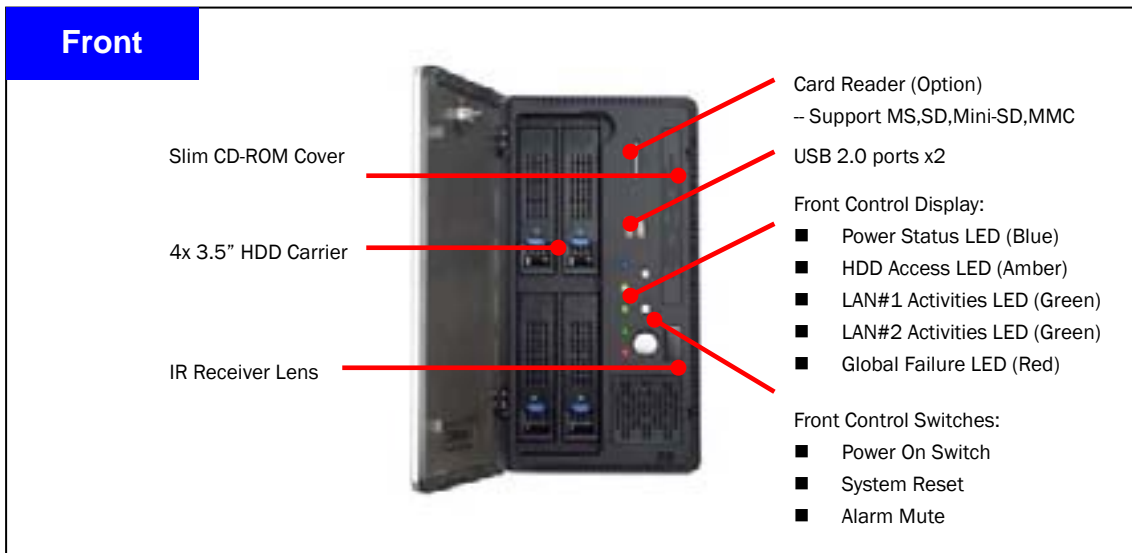
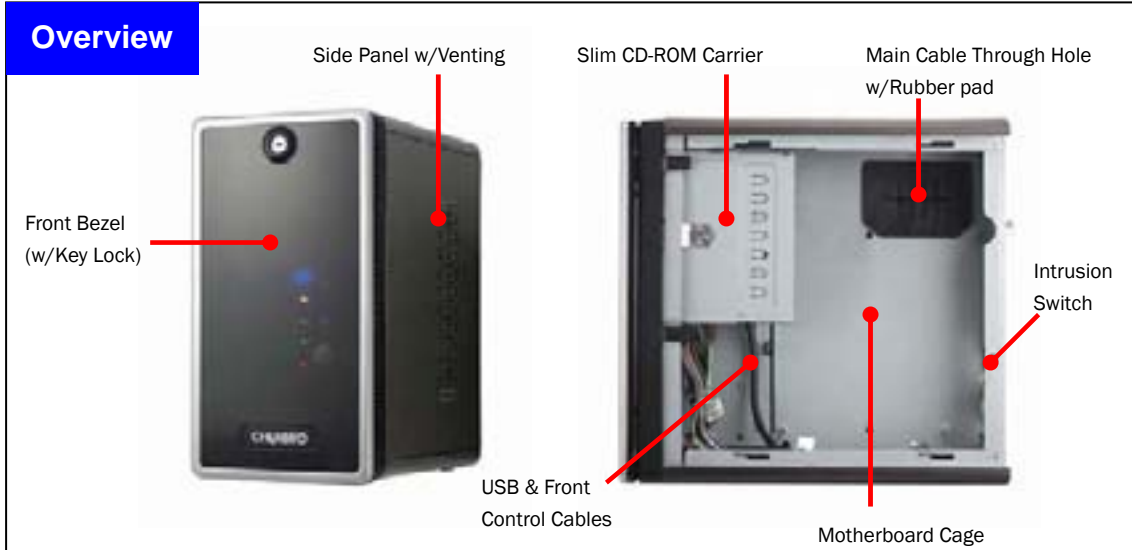
## Features

- Silver-gray powder coating combined with simple lining
- Ideal for high storage capacity (Hot-swap HDDs) with RAID-5 functionality
- Available for multi-media platform
- 9.5 liters small form factor with Mini-ITX M/B
- Removable M/B carrier for excellent thermal performance & easy cabling
- External adapter reduces noise level
- Optional remote control & riser card

## Technical Specifications

<b>Model Name</b>	◆ES340			
<b>M/B Form Factor</b>	◆Mini-ITX, Mini-DTX			
<b>Dimension (DxWxH)</b>	◆260mm x140mm x260mm    ◆10.24" x 5.51" x 10.24"			
<b>Drive Bay</b>	◆Hot-swap: 3.5" x 4    ◆Internal: 2.5" x 1    ◆Slim ODD: 1			
<b>PSU</b>	◆Form Factor: External Adapter			
<b>Indicator</b>	◆Power, HDD Activity, 2 x LAN, Fault			
<b>Front Control</b>	◆Power, Reset, 2 x USB 2.0			
<b>Front Access</b>	◆2 x USB 2.0,    ◆SD/Mini-SD/MMC/MS Card Reader (Optional)			
<b>Security</b>	◆Kensington Lock Supported, Padlock Loop			
<b>Cooling Fan</b>	◆Front: 60mm (Optional)    ◆Rear: 2 x 70mm			
<b>Slot Opening</b>	◆1 x Low Profile (Optional)			
<b>Material</b>	◆SECC			
<b>Plastic Material Type</b>	◆ABS-HB			
<b>Sheet Metal Thickness</b>	◆0.8mm			
<b>Net Weight</b>	◆4.5 Kgs			
<b>Gross Weight</b>	◆7.0 Kgs			
<b>Backplane</b>	◆SATA2/SAS			
<b>Container Info.</b>		20'	40'	40'H
	◆Single Packing	560	1160	1305
	◆Bulk Packing + Pallet	X	X	X

## Opening the Chassis



To open the chassis for assembly of internal parts, users need to:

- Remove the side panel
- Remove the front bezel

To remove the side panel:

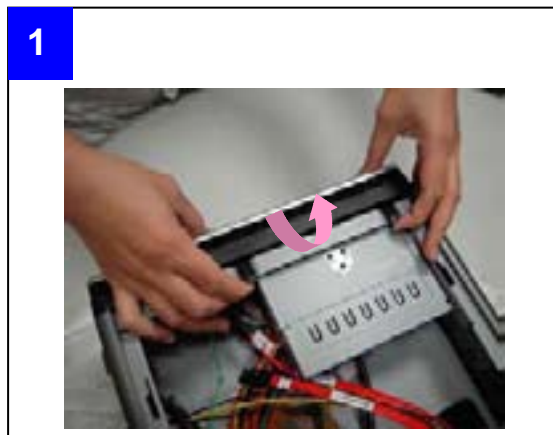


■ Release the side panel thumb screw on the rear

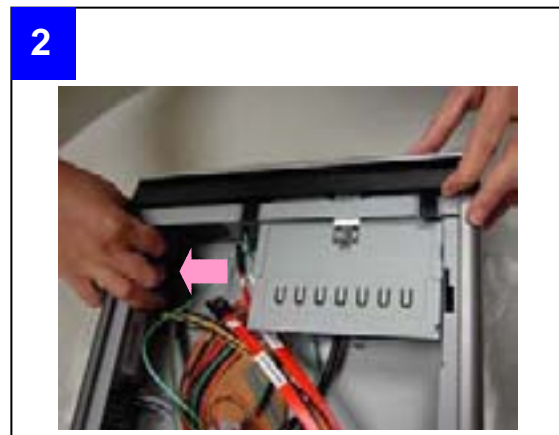


■ Push and slide the side panel toward rear to open the chassis

To remove the front bezel:



■ Lift up the latch along the side to detach the bezel



■ Detach the bezel from Slim ODD side gently



■ Angle the latch until it is 15 degree away from the chassis



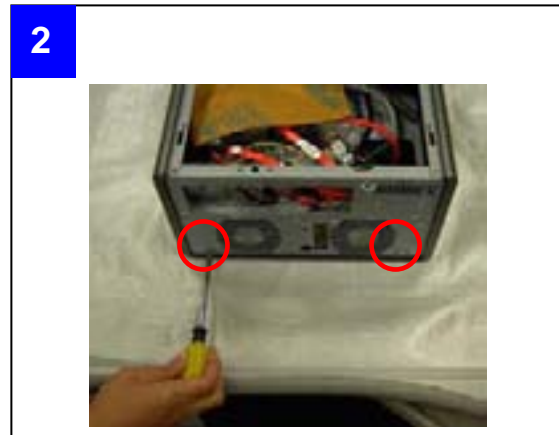
■ gently pull the bezel to make it detach



**To remove the M/B cage:**



■ Release the secure screws on the M/B cage



■ Release the two screws around the rear fans



■ Remove the motherboard cage



■ Disconnect the extension fan cables



■ Detach the motherboard cage with System Cables (SATA, Power, Fan cables) through the cable routing hole



■ Finish detaching the M/B cage and make sure all the connection on backplane and PDB are still tight before assembly back the M/B cage

## Installing Devices:

There are other optional devices for ES340, including:

- Mini-ITX or Mini-DTX
- Slim Optical Drive
- Standard SATA2 Hard Drive
- 4-in-1 Mini Card Reader (Optional)
- Dedicated Universal Heatsink for AMD/Intel CPU

### **Installing Mini-ITX or Mini-DTX M/B:**



- Attach the motherboard I/O gasket (provided by M/B)



- Attach screws to fix the motherboard.

### **Installing Slim Optical Drive:**

Before install the slim CD-ROM, the front bezel must be removed. And the slim CD-ROM carrier should be apart from the chassis.

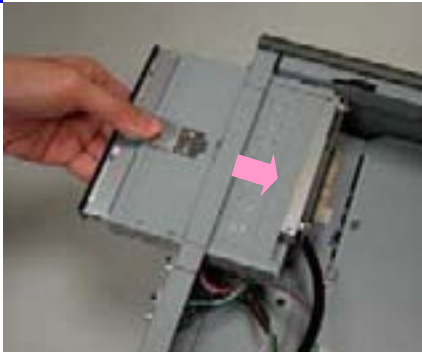


- Assemble the Slim CD-ROM adapter with attached screws to the Slim CD-ROM



- Make sure the Slim CD-ROM is fully seated with holder clip on the side.

3



■ Slide in the assembled CD-ROM into the chassis

4



■ Make sure the holder latch is secured when fully seated

### Installing 3.5" SATA2 Hard Drive:

1



■ Remove the HDD Carrier from the chassis and place the SATA2 HDD into it.

2



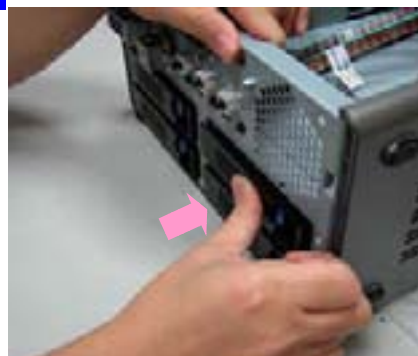
■ Attach the HDD screws on both sides

3



■ Slide in the assembled HDD into the chassis, suggest install by the ID definition on the front panel (No need to remove the front bezel)

4

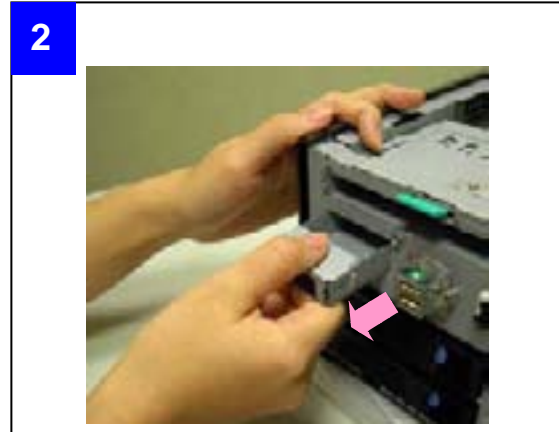


■ Make sure the carrier is fully seated

### Installing Card Reader (optional):



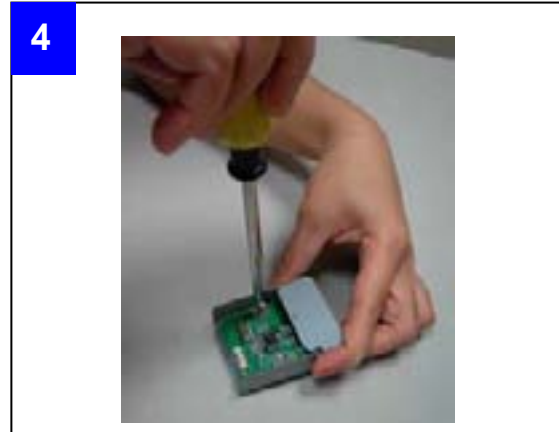
■ Detached the front screw of Card Reader holder



■ Pull out the Card Reader holder



■ Remove the seal on the holder and make sure the sockets is right to the opening



■ Attach screws to fix the Card Reader



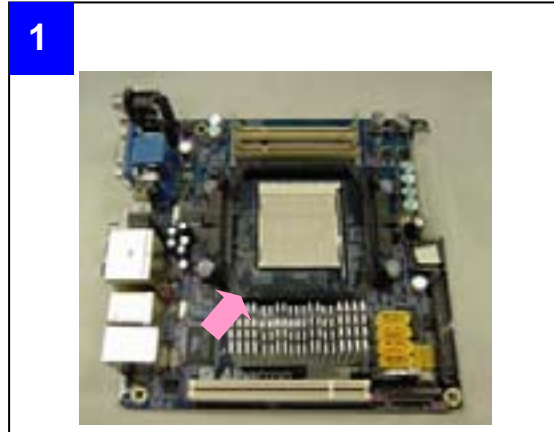
■ Connect the short end of USB split cable to Card Reader with



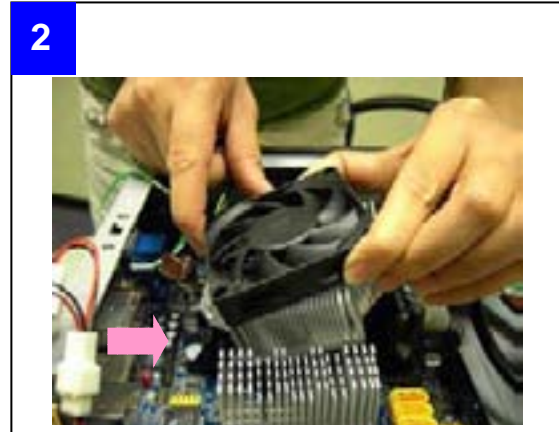
■ Install the assembled Card Reader back to the chassis with attach screw

### Installing Dedicated AMD/Intel Heatsink (optional):

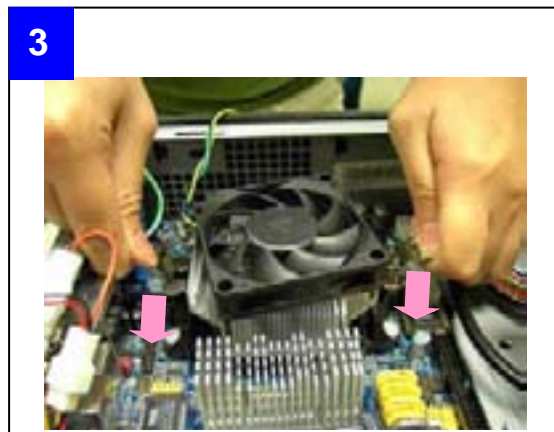
The Chenbro heatsink for ES340 is designed specifically to support Intel and AMD desktop LV (Low Voltage) CPU in universally. Note the CPU power rating should not over 65W as maximum.



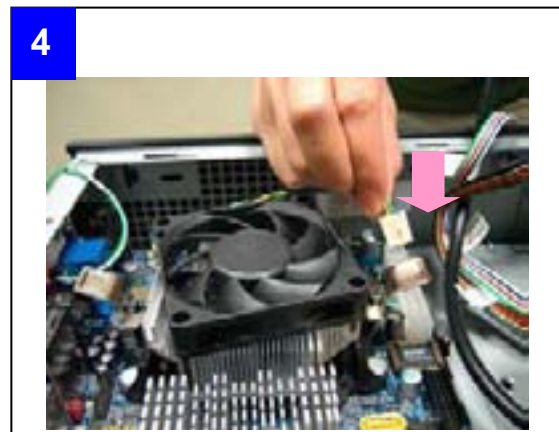
- Attach the heatsink retainer on to M/B before install M/B into the chassis (Note: AMD M/B are preinstalled it)



- After installing CPU with heat spread, gently clip the heatsink with metal clipper in one end.



- Secure the heatsink clipper in other end



- Connect the heatsink fan to the M/B

### Installing Riser Card (optional):



- The PCI card mounting bracket must be detach and use special one for mounting, (Ex. PCI RAID card)



- Connect the cables before install.

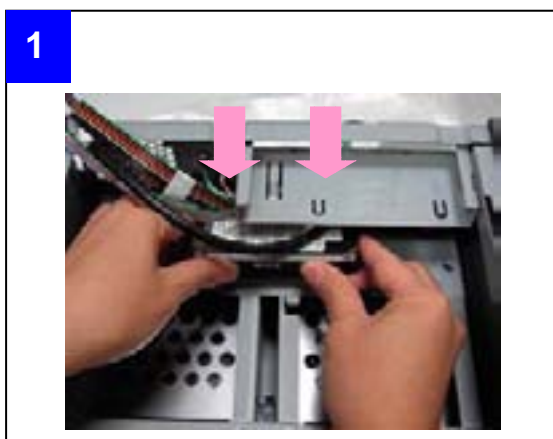


- Gently install the PCI card with riser into the slot.  
(Please pay attention to the cable arrangement)



- Attach screws on the rear side to secure the PCI card

### Installing 2.5" HDD:



- Place the 2.5" HDD underneath the Slim ODD



- Fix the 2.5" HDD with attached screws

**Note: (1) To install 2.5" HDD, the M/B cage is required to disassemble.**

**(2) IDE cable adaptor is required to connect 2.5" IDE HDD to the M/B.**

## Connecting Devices:

**ES340 is pre-installed with several cables inside as factory default, which includes:**

- SATA2 cable for Hot-swap hard drive
- Power cable for M/B
- Front panel I/O cables
  - USB 2.0 cable
  - 4-in-1 card reader (optional)

**To connect SATA2 Hot-swap hard drive:**



- Check the bundled cable with number tag



- Connect the SATA cables to the M/B properly

**Note: If there is not enough SATA ports from M/B, users can either remove or keep the bundled P3/P4 SATA cable.**

**To connect the power:**



- The DC harness comes with 20+4 pin as main connection for different M/B requirement.



- Install and secure the DC harness cable to the M/B properly

**To connect front panel I/O and LEDs:**

**a. USB 2.0 cable connection**



- Front USB cable should be connected to on-board USB header properly depends on different M/B.

**b. Front display cable connection**



- The display fan-out cable with different connection for: Power on, HDD, LAN, FAIL and the front switch



- Connect to the M/B according to the M/B pin header definition properly.

**c. Card reader cable connection (optional)**



- After installing the assembled Card Reader, the shorter USB cable should be connected to the M/B



**d. Slim ODD cable connection (optional)**

1



■ Use power split cable in accessory pack for conversion of DC harness, small 4P is connected to the Slim ODD adaptor board

2



■ Use either standard IDE cable from 3<sup>rd</sup> party M/B, or use optional cable from Chenbro to connect to the Slim ODD adaptor board

**e. Cable management**

1



■ Due to limited space inside the chassis, make sure all cable are connected properly and use the cable tie through the bridge land on side wall

2



■ Tie up the cable so the cables are fixed in certain space.

## Power Adaptor and Backplane

### Power Adaptor Specification:

For electrical specification:

Input Characteristics		Output Characteristics	
Item	Spec	Item	Spec
Rated Input Voltage	100V / 240V	Output Raged Voltage	19V
Input Voltage Range	90VAC to 264VAC	Output Current	6.32A
Input Frequency Range	47Hz to 63Hz	Output Voltage Setting	18.05V~19.95V
Efficiency	86%		

In regards of the protection characteristics, this power adaptor will act as power shut-down automatically base on:

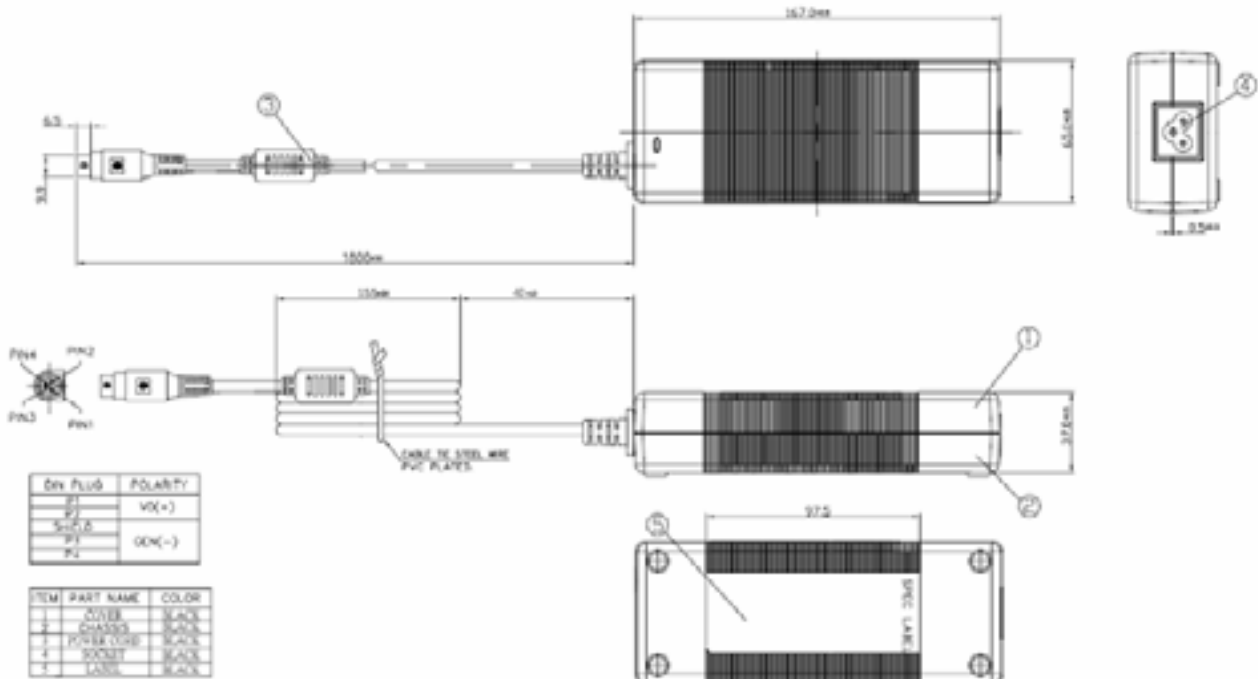
- Over Current Protection
- Over Voltage Protection
- Over Temperature Protection

For the environment operation:

- Temperature: 0 ~ 40 degC @ Operating and -20 ~ +80 @ Storage
- Humidity: 20% ~ 80% @ Operating and 10% ~ 90% @ Storage
- MTBF: > 100,000 hrs

Mechanical characteristics:

- Dimension: 167mm \* 65mm \* 37mm
- Input AC socket type:
- Output DC cable length: 14#AWG, L=1.8m



### Power Distribution Board:

The PDB (Power Distribution Board) inside the ES340 is a specific DC to DC adaptor, which only provides the converting from DC19V to multiple voltages include +5V, +3.3V and +12V for all the devices and boards usage scale up to 180W Power Adaptor. As the warning message on the back side, any improper 3<sup>rd</sup> party Power Adaptor may cause damage to the PDB or internal components.



### Connection of DC harness:



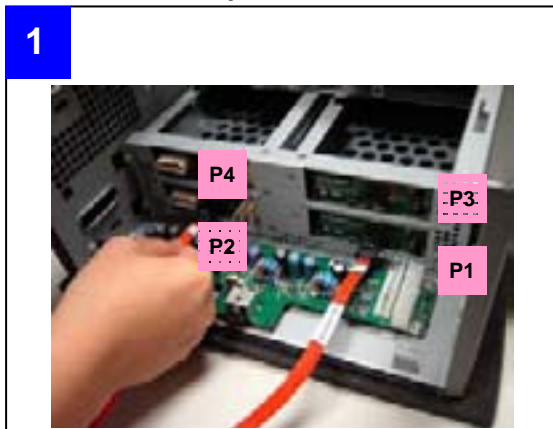
- When doing the PDB maintenance, please make sure the cables are plugged properly



- The single ATX 20-pin connector should be connected to PDB, another side with split 20+4 pin are for M/B.

**Note: Do not plug the DC cable in reverse direction, it will cause serious system and power adaptor damage**

### Connect the backplane cables:



- The SATA cables (tagged P1~P4) are strongly recommended to connect following the port orders indicated as picture.



- Connect the Big-4P power to the backplane

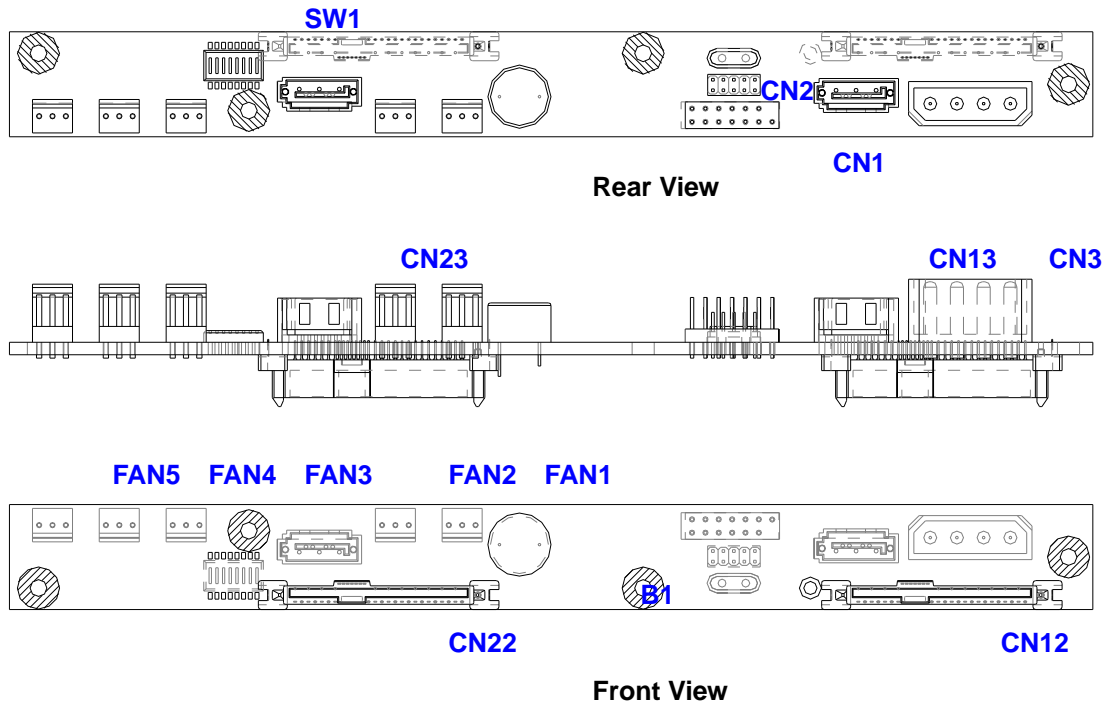
### 2-port SATA2 Backplane Introduction:

ES340 is integrated with two SATA2 backplanes to support four 3.5" HDD hot-swap feature. With dedicate backplane bracket assembled, users can directly attach the HDD on the tray and plug into the HDD slot.

### Hardware Specification:

Host Interface	SATA 7-pin compatible
HDD Interface	SAS (22+7), SATA2 compatible
Hot-Swap	Yes, allows user to on line replace Hard Disk Drive
Cooling	Five Fan connectors
Environment Monitor	Fan speed detection and temperature detector
Connectors	<ol style="list-style-type: none"> <li>SATA2 * 2 to host</li> <li>SAS (22+7) *2 (for HDD ),</li> <li>Standard 4P Power connector x 1 for +5V, +12V from power supply</li> </ol>
Dimension	206(L) x 20(W) x 2.4(H) mm
Material	FR4 4 layer

### Backplane Connectors




- (1) [CN12/CN22] : Connect "22+7"pin SAS connector to HDD
- (2) [CN13/CN23] : SATA connector to Host
- (3) [FAN1 / FAN2 / FAN3 / FAN4 / FAN5] : Fan connectors
- (4) [SW1] : Function Setting Switch
- (5) [CN3] : Power Connectors
- (6) [CN1] : LED Header
- (7) [CN2] : Micro-P Programming Interface (Reserved)

### Pin Assignment

#### [CN1]


Pin	Def.	Pin	Def.
1	NC	2	NC
3	NC	4	NC
5	HDD1 PWR LED+	6	HDD1 PWR LED-
7	HDD2 PWR LED+	8	HDD2 PWR LED-
9	Fail+	10	Fail-
11	Mute+	12	GND
13	NC	14	Key



**LED Header**

#### [SW1]

DIP	Def.	On	Off
1	FAN1	Enable	Disable
2	FAN2	Enable	Disable
3	FAN3	Enable	Disable
4	FAN4	Enable	Disable
5	FAN5	Enable	Disable
6	TEMP SETTING	65	55
7	TEMP SENSOR	Enable	Disable
8	Reserved	NA	NA



**Function  
Setting  
Switch**