

Preconfigured Door Station with MxDisplay+ Intercom in One Set

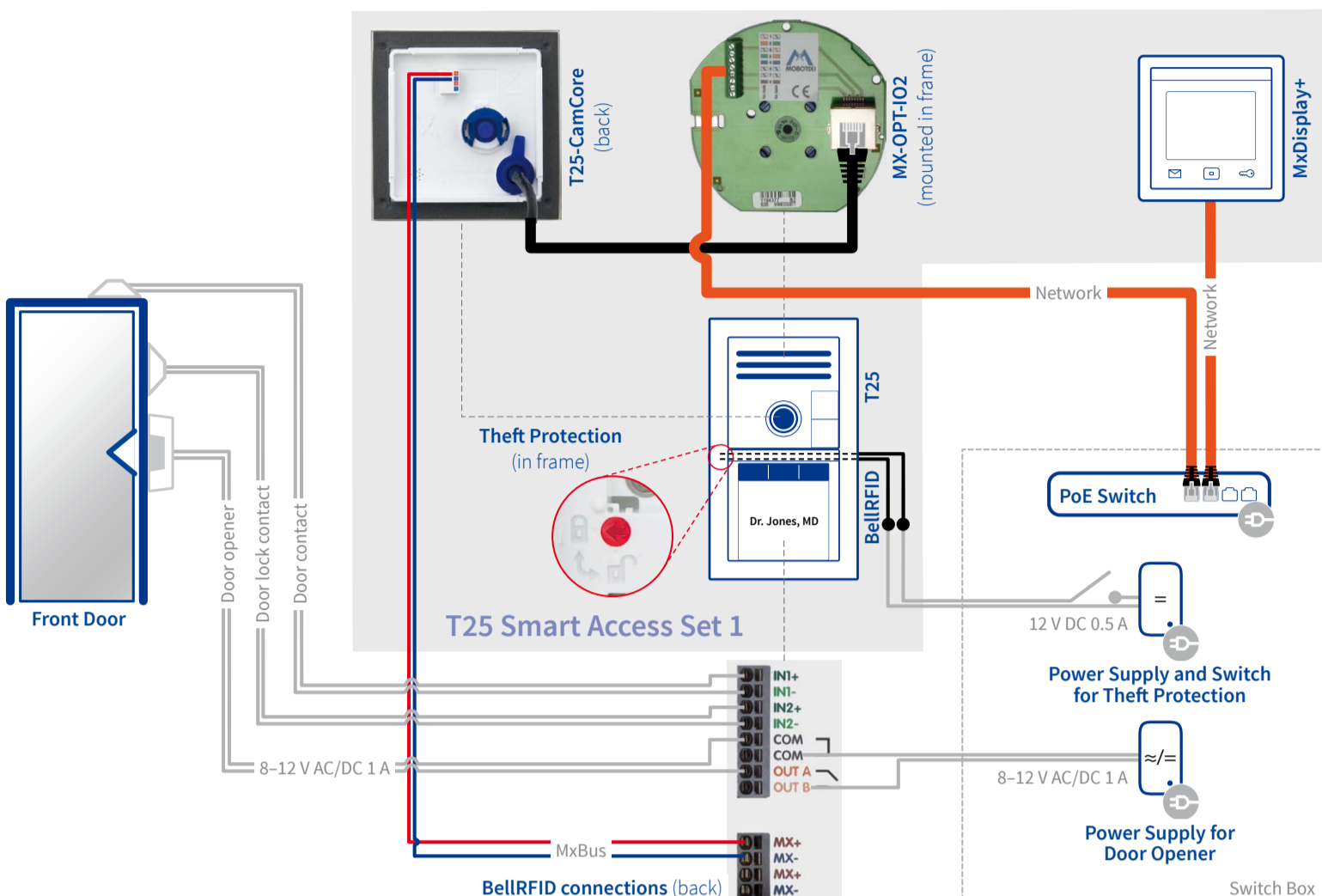
Weatherproof IP Video Door Station with BellRFID bell button module in double frame; MxDisplay+ with FlatMount Frame as intercom; integrated microphone and speaker

Product Information:

www.mobotix.com > Products > Home Automation

MX-T25-SMART-SET1
32.776-002_EN_10/2016

- T25 6MP CamCore with daylight sensor, white
- BellRFID with function keys and one large bell button, white
- Double frame for T25 and BellRFID, white
- Double on-wall housing with theft protection, white
- Double in-wall housing, blue
- MxDisplay+ with FlatMount Frame, white
- In-wall housing for MxDisplay+ with FlatMount Frame
- ETH network connection board
- RFID cards (1 admin card, 6 user cards)
- Fastening material
- Mounting accessories, keys, etc.



Use our free-of-charge **bell label printing service** on www.mobotix.com, **Support section!**

Preparatory Tasks

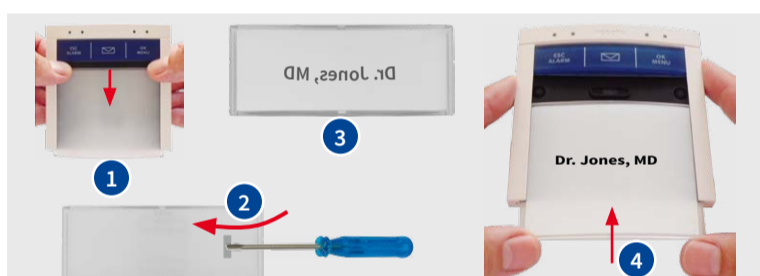
Make sure that the cabling has been routed as shown in the schema drawing above. Also make sure that none of the wires involved carry any current.

1. Take door station out of package and remove modules



- 1 Unlock modules using the blue special key (insert key and press)
- 2 Lift BellRFID on the left-hand side and take out of frame.
- 3 Lift T25 on the left-hand side and take out of frame.

2. Prepare the BellRFID



- 1 Use your fingernails and pull the bell button from the module as shown.
- 2 Remove silicone insert from the back using the small screwdriver.
- 3 Create bell button label, insert it and firmly press silicone insert into place.
- 4 Push bell button back into module.

3. Install the door station housing



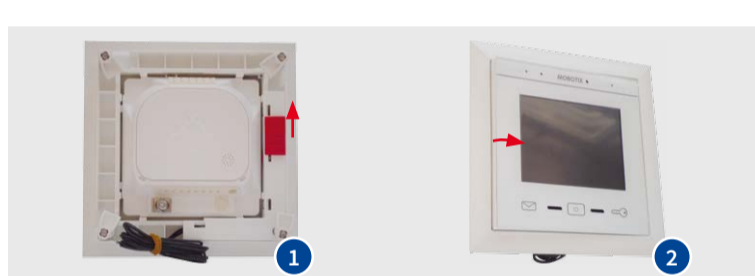
- 1a **On-wall mounting:** Install on-wall housing using four wood screws 6x50 mm, washers and anchors.

- 1b **In-wall mounting:** Fasten the in-wall housing in the cut-out, apply plaster if needed.

- 2 Lead the installation cables and the two-wire lines for the signal inputs/outputs of the BellRFID into the inside of the housing, apply blue cable guides and suitable screws.

- 3 Apply sealing to frame of the housing.

4. Take MxDisplay+ out of packaging



- 1 Push red slider on the back as indicated by the arrow.
- 2 Gently press MxDisplay+ from the rear on the left side to release it from the frame.

5. Prepare installation of MxDisplay+



- 1a **In-wall mounting without in-wall housing:** Cut opening for FlatMount Frame (e.g., in cavity wall).

- 1b **In-wall mounting with in-wall housing:** Cut opening for in-wall housing, apply plaster if needed.

- 2 Lead installation cable into the inside of the in-wall housing or the cut-out, respectively.

Additional Information

T25 System Manual Part 1

Quick Installation: BellRFID

Quick Installation: MxDisplay+

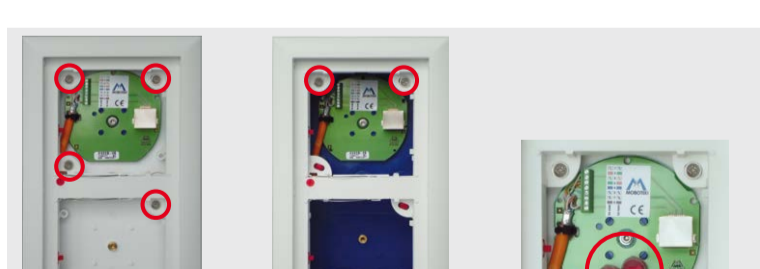
Installation: Door Station

1. Wire and install Ethernet connection module



- 1 Connect network installation cable to Ethernet connection module.
- 2 Roll back shield mesh of installation cable and tie down on ground contact using cable tie.
- 3 Use cylinder head screw M3x6 mm and corresponding washer and fasten Ethernet connection module to the housing as shown.

2. Attach the Double frame to the housing

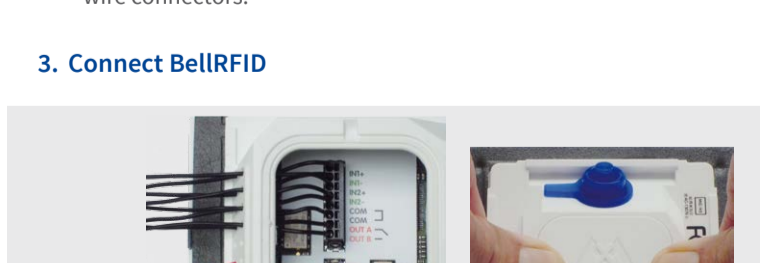


- 1a **On-wall mounting:** Hold Double frame in place and fasten it using six countersunk screws 4x12 mm.

- 1b **In-wall mounting:** Hold Double frame in place and fasten it using four countersunk screws 4x30 mm.

- 2 Optionally connect two-wire line for theft protection using the two wire connectors.

3. Connect BellRFID



- 1 Remove lid on the back of the module using a small screwdriver.
- 2 Remove insulation of the following wires, push through cable guide and into wire terminals (see schema drawing above):
 - **Power supply of door opener** from the switch box to the **COM** and **OUT B** terminals.
 - **Wires to door opener** to the **COM** and **OUT A** terminals.
 - **Wires to door sensor** to the **IN1+** and **IN1-** terminals.
 - **Wires to door lock sensor** to the **IN2+** and **IN2-** terminals.
- 3 Press lid firmly into the back of the module.

4. Insert BellRFID into frame

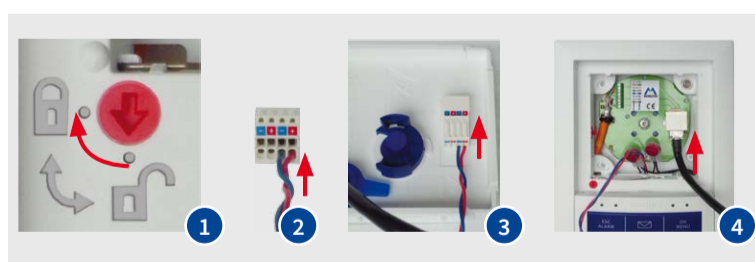


- 1 Lead pre-installed MxBus wires under the bridge in the Double frame to the top.

- 2 Guide wires through housing in such a way that they will not be squeezed between the BellRFID and the frame when inserting the module.

- 3 Insert BellRFID at the right-hand side, push cabling into the frame, then press firmly on left-hand side until you hear a noticeable click.

5. Connect T25



- 1 Optionally activate theft protection. **Caution: Only activate the theft protection if you can connect the two black wires to a DC power source without having to open the housing. If this is not the case, you will not be able to remove the modules from the frame later on!**

- 2 Push MxBus wires into the MxBus plug.

- 3 Insert MxBus plug into the connector on the back of the T25.

- 4 Insert RJ45 plug of the T25 into network connector of the Ethernet connection module.

6. Insert T25 into frame



- 1 Guide wires through housing in such a way that they will not be squeezed between the T25 and the frame when inserting the module.

- 2 Insert T25 on the right-hand side, push cabling into the frame, then press firmly on left-hand side until you hear a noticeable click.

Additional Information

T25 System Manual Part 1

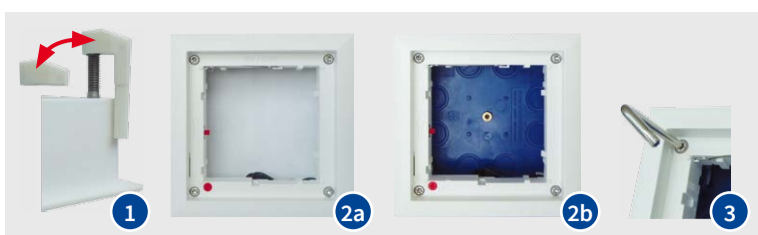
Quick Installation: BellRFID





Installation: MxDisplay+

1. Fasten FlatMount Frame



- 1 Cavity wall installation and wall thickness < 24 mm:** Replace clamping brackets.
- 2a Cavity wall mounting:** Insert FlatMount Frame into cut-out.
- 2b In-wall mounting:** Insert FlatMount Frame into in-wall housing.
- 3** Tighten four screws using Torx wrench TX20. In a cavity wall, make sure that the wings are pointing outward.

2. Connect MxDisplay+



- 1** Remove lid on the back of the module using a small screwdriver.
- 2** Remove insulation of the network installation cable, push wires through cable guide and into wire terminals (see color code above terminals).

- 3** Loosen screw of ground clamp (TX20), twist shield mesh of network installation cable and place under ground clamp, tighten ground clamp screw.
- 4** Press lid firmly into the back of the module.

3. Insert MxDisplay+ into FlatMount Frame



- 1** Do *not* activate theft protection.
- 2** Insert MxDisplay+ at the right-hand side, push cabling into the frame, then press firmly on left-hand side until you hear a noticeable click.
- 3** Remove protective plastic from MxDisplay+.

Additional Information

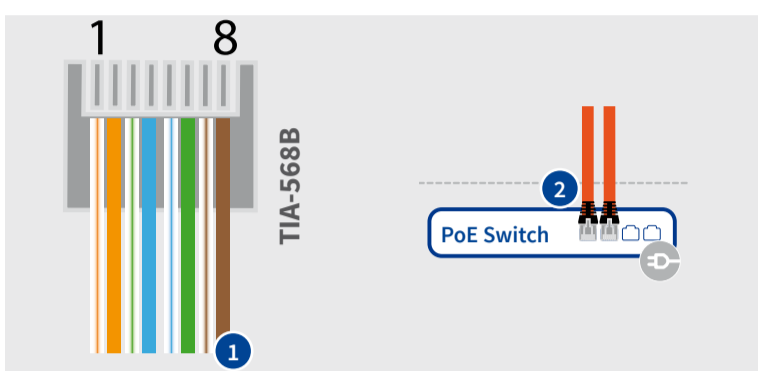
Quick Installation: MxDisplay+

Quick Installation: FlatMount Frame

Installation: Switch Box

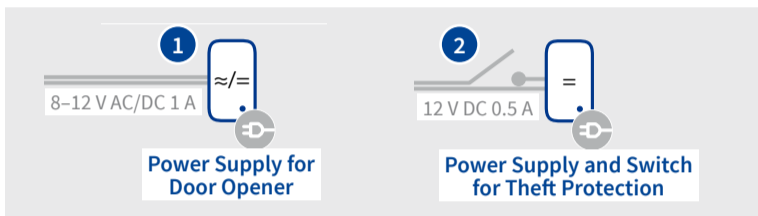
Make sure that the power supply of the PoE switch and the power adapters (door opener, theft protection) is switched off.

1. Connect modules to PoE switch



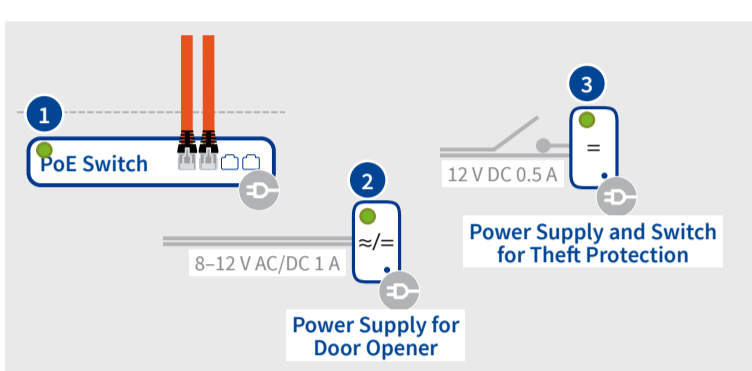
- 1** Apply crimping plugs to both network installation cables (door station and MxDisplay+) according to **TIA-568B** standard.
- 2** Insert both network installation cables into PoE ports of switch.

2. Connect power supplies



- 1** Connect two-wire line from door opener (BellRFID) to power supply.
- 2** Optionally connect two-wire line from theft protection to power supply, leading one wire via a switch.

3. Power on power supplies



- 1** Power on PoE switch.
- 2** Power on power supply of door opener.
- 3** Optionally power on power supply of theft protection.

Additional Information

T25 System Manual Part 1

Quick Installation: MxDisplay+

Initial Operation and Usage of the System

Door station features

Once you have installed the system and powered on the components, you can immediately use the following features:

- Pressing the bell button of the BellRFID module or at the T25 will call the MxDisplay+.
- The MxDisplay+ now shows the live video of the T25, you can talk to visitors and open the door, if required.
- If a **door sensor** is attached, the MxDisplay+ indicates if the door is open or closed.
- If a **door lock sensor** is attached, the MxDisplay+ indicates if the door lock is open or closed.
- At any time, you can use the MxDisplay+ to see the live video from the T25 and activate the intercom, if required.

Door opening features

The supplied RFID cards (6 user, 1 admin cards) can be used as follows:

- Holding a blue user card in front of the BellRFID module opens the door.
- When holding the red admin card in front of the module, you can train additional cards purchased from MOBOTIX.

Preset factory defaults

- The **Super PIN** of the system (i.e., the administration password of the camera) has been set to a combination of numbers that is derived from the ID of the red admin card as follows:



- The MxDisplay+ language is German.
- The MxDisplay+ uses the T25 as time server and three public time servers have been set on the T25.
- MxDisplay+ and T25 are communicating via their factory default IP address (10.x.x.x).
- In addition, the T25 has been set up as DHCP client to allow easy integration into an existing network.

Note

For some system features (such as a subsequently configured time-based access control or the recording of ringing events), it is important that the system time is set properly. If this is the case, you need to make sure that the camera can connect to a suitable time server.

Additional Information

T25 System Manual Part 2

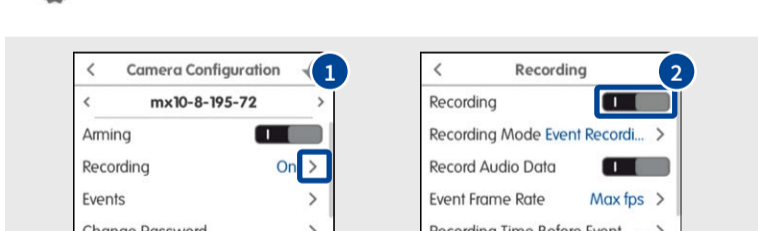
Quick Guide Software: MxDisplay+

Optional Settings

Once you have completed the initial operation, you can execute the following steps at the MxDisplay+. Tap on the MxDisplay+ to activate it.

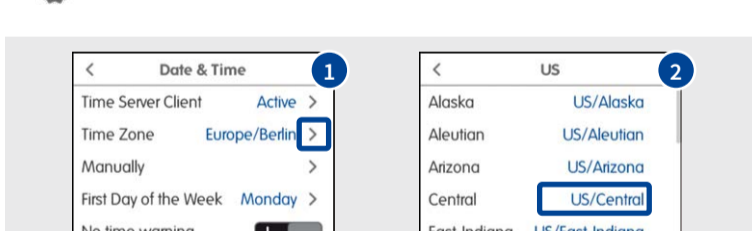
1. Activate recording

> Installation > Camera Configuration



2. Adjust time zone

> Installation > Display Configuration > Date & Time



Important Notes

Safety Warnings

Notes on Installing:

- This product must not be used in locations exposed to the dangers of explosion.
- Make sure that you install this product as outlined in this document. A faulty installation can damage the camera!
- When installing this product, make sure that you are only using genuine MOBOTIX parts and MOBOTIX connection cables as well as standard network installation cable and multi-wire cabling.
- Only install this product on suitable, solid materials that provide for a sturdy installation of the fixing elements used.

Electrical installation: Electrical systems and equipment may only be installed, modified and maintained by a qualified electrician or under the direction and supervision of a qualified electrician in accordance with the applicable electrical guidelines. Make sure to properly set up all electrical connections.

Electrical surges: MOBOTIX cameras are protected against the effects of small electrical surges by numerous measures. These measures, however, cannot prevent the camera from being damaged when stronger electrical surges occur. Special care should be taken when installing the camera outside of buildings to ensure proper protection against **lightning**, since this also protects the building and the whole network infrastructure.

Max. power consumption of attached extension modules: The power consumption of all attached **MxBus modules** must **not exceed 3 W**. When attached to the MxBus connector **and** the USB socket, the **power consumption of all attached modules must not exceed 4 W, if the camera is powered by PoE class 3**. If **PoE class 2** is used, **the power consumption of all attached modules (MxBus and USB) must not exceed 1 W!**

Never touch the lens: Due to the high temperature of the T25, the area of the image sensor **can get quite hot**, especially when the ambient temperature is also high. This does not affect the proper functioning of the camera in any way. For this reason, the product must not be installed within the reach of persons without the dome.

Power off before opening the camera: Make sure the power supply to the camera is disconnected before opening the camera!

Network security: MOBOTIX products include all of the necessary configuration options for operation in Ethernet networks in compliance with data protection laws. The operator is responsible for the data protection concept across the entire system. The basic settings required to prevent misuse can be configured in the software and are password-protected. This prevents unauthorized parties from accessing these settings.

Legal Notes

Legal aspects of video and sound recording: You must comply with all data protection regulations for video and sound monitoring when using MOBOTIX products. Depending on national laws and the installation location of the T25, the recording of video and sound data may be subject to special documentation or it may be prohibited. All users of MOBOTIX products are therefore required to familiarize themselves with all applicable regulations and to comply with these laws. MOBOTIX AG is not liable for any illegal use of its products.

Disposal

Electrical and electronic products contain many valuable materials. For this reason, we recommend that you dispose of MOBOTIX products at the end of their service life in accordance with all legal requirements and regulations (or deposit these products at a municipal collection center). MOBOTIX products must not be disposed of in household waste! If the product contains a battery, please dispose of the battery separately (the corresponding product manuals contain specific directions if the product contains a battery).

Disclaimer

MOBOTIX AG does not assume any responsibility for damages, which are the result of improper use or failure to comply to the manuals or the applicable rules and regulations. Our **General Terms and Conditions** apply. You can download the current version from our website at www.mobotix.com by clicking on the COS link at the bottom of every page.