

MOBOTIX T25M Hemispheric IP Video Door Station



The Door Station modules can be combined with one another. This allows every customer to configure a tailor-made system: one to five bell buttons, connection via two-wire cable or network cable, in white, silver-metallic, dark gray, black or amber.

**Better Overview. Increased Security.
More Possibilities.**




The IP Video Door Station from MOBOTIX is an innovative, modular system for door communication and access control. The system supports the VoIP/SIP video telephony standard and can be upgraded or modified at any time. The camera module featuring innovative MOBOTIX 5MP technology records all events taking place in front of the building or gate; when the bell is pushed, when motion is detected in the image area or upon triggering a contact. Fit for any weather, at dawn and dusk, as well as for backlight situations.


- Complete view from wall to wall and floor to ceiling thanks to hemispheric MOBOTIX technology
- Records the entire area in front of the door, including sound, automatically and around the clock
- Intercom with remote opening function, accessible globally, e.g., via PC or MOBOTIX App
- Integrated message function for leaving and listening to messages directly at the door
- Keyless access via PIN, transponder or MOBOTIX App
- Simple installation, optionally even without an IP cable via two existing bell wires
- Combination of MOBOTIX cameras and system accessories to a multifunctional comprehensive system

MOBOTIX Advantages

Extremely high-sensitive 5-megapixel sensors • All relevant events are automatically saved • Highly secure as motion sensors detect even the smallest movements and reduce the number of false alarms • Cost-effective as fewer cameras are needed thanks to HiRes panorama view • Maintenance-free with no heaters, fans or moving parts • Can be expanded thanks to encrypted two-wire bus (MxBus) • Synchronization via GPS satellite means data available in real time • Weatherproof from -30°C to 50°C (-22°F to 122°F) • No licensing or software fees, free-of-charge updates

Technical specifications subject to change without notice

Modules	
	T25-CamCore <ul style="list-style-type: none"> Allround view with no blind spots Speaker, microphone, bell and light button Integrated LED illumination
	KeypadRFID <ul style="list-style-type: none"> Keyless entry via PIN or transponder Integrated message function
	Info module/Info2wire+ <ul style="list-style-type: none"> LED-backlit info module Info2wire+ product version for connecting the outdoor station via two-wire cable (data and power)

BellRFID Bell Button Module	
	
<p>Each of the six bell button sets can be used without having to replace the BellRFID basic module. The bell button set can be exchanged at any time. Integrated RFID technology for keyless door opening via transponder. Blue function key for checking voice mailbox messages directly at the Door Station. The MOBOTIX website offers a free-of-charge printing service for BellRFID and the info module.</p>	

Accessories	
	Frame (without modules) <ul style="list-style-type: none"> Available for on-wall or in-wall mounting Weatherproof (IP65) Versions for 1 to 4 modules Integrated module anti-theft protection
	MX-DoorMaster <ul style="list-style-type: none"> Door opener and doorbell (volume and melody can be configured) Backup power supply with battery (up to 60 hours) 2 function buttons, 2 status LEDs
	MOBOTIX App <ul style="list-style-type: none"> For iPhone/iPad/iPod touch iOS 5 or higher Connect to the door station from anywhere via Wi-Fi or UMTS

Available colors	
	Colors <ul style="list-style-type: none"> Available in white, silver-metallic, dark gray, black, amber Modern, unobtrusive design

Technical Data CamCore	
Model versions	Sec, Sec-Night
Lens options	L12 (180° x 160°)
Sensitivity	Color sensor: 0.25 lux at 1/60 s, 0.013 lux at 1 s B/W sensor: 0.05 lux at 1/60 s, 0.0025 lux at 1 s MxLEO – Lowlight Exposure Optimization
Image sensors	1/2.5" CMOS, 5 megapixels, progressive scan
Max. image size	Color: 2048 x 1536 (QXGA), B/W: 2048 x 1536 (QXGA)
Image Formats	Freely selectable image format (160 x 120 up to 2048 x 1536/color); PTZ views: Surround (Quad), fisheye full image, normal, panorama, double panorama, panorama focus (3 views)
Max. frame rate, M-JPEG (live/recording)	VGA: 30 fps, MEGA/HD: 10 fps, QXGA: 4 fps
Max. video rate MxPEG (live/recording/sound)	VGA: 30 fps, MEGA/HD: 30 fps, QXGA 20 fps
Image compression	MxPEG, M-JPEG, JPEG, H.264 (SIP video only)
Internal DVR	MicroSD Slot (recording inside the camera, up to 64 GB; 4-GB card preinstalled)
External storage	Directly on NAS and computer/server without additional recording software
Software (free of charge)	MxEasy video management software, MxControlCenter control center software, MOBOTIX App for iOS devices iOS 5.0 and higher
Image processing	Backlight compensation, automatic white balance, image distortion correction (including panorama image correction), motion detection, MxActivitySensor
Virtual PTZ (vPTZ)	Digital pan/tilt/zoom, continuous 8x zoom, full image recording in the background
Alarm/events	Triggering of events by integrated multiple-window motion detection, temperature sensor, notification over email, FTP, IP telephony (VoIP, SIP), visual/acoustic alarm, pre- and post-alarm images
Audio	Integrated microphone and speaker, lip-synchronous audio, two-way speaker, audio recording
Interfaces	Ethernet 10/100, IPv4/IPv6, MiniUSB, MxBus
Video telephony	VoIP/SIP, intercom, remote controlling with key code, event notification
Security	User/group management, HTTPS/SSL, IP address filter, IEEE 802.1x, intrusion detection, digital image signature
Certifications	EMC (EN 50121-4, EN 55022, EN 55024, EN 61000-6-2, FCC Part 15B, AS/NZS3548)
Power supply	Power over Ethernet (PoE in accordance with IEEE802.3af): PoE class variable (2/3) depending on operating mode; power consumption: typ. 4.5 watts
Operating conditions	IP65 (DIN EN 60529), -30 to +50 °C (-22 to +122 °F)
Dimensions	Width x height x depth: 13.1 x 33.3 x 7.6 cm (Door Station in triple frame)
Weight	CamCore: about 450 g

Comparable RAL colors (not exactly the MX colors):

White – RAL 9016, Silver Metallic – RAL 9006, Dark Gray – RAL 7012, Black – RAL 9005, Amber – RAL 8025

For more information on the entire range of MOBOTIX accessories and additional information on the T25, such as prices, manuals, video management software for computers and iOS devices, etc., please go to www.mobotix.com > **Products**. Or - if you would like to talk to us on the phone to get advice with our products, please call +49 06302 9816-103.

Camera Model	T25M-Sec	T25M-Sec-Night
Lenses, Sensors		
Hemispheric 12 mm (180° x 160°)	L12	L12
Super Wide-Angle 25 mm (82° x 61°)	–	–
Wide-Angle 38 mm (55° x 41°)	–	–
Wide-Angle 51 mm (40° x 30°)	–	–
Tele 76 mm (27° x 20°)	–	–
Tele 160 mm (13° x 10°)	–	–
Tele 320 mm (7° x 5°)	–	–
CSVario 28 – 63 mm (28° – 58°)	–	–
Image sensor with individual exposure zones	Color	B/W
Sensor sensitivity in lux at 1/60 s /1 s	0,25/0,013	0,005/0,0025
Image sensor resolution (color or B/W sensor)	5MP (2592 x 1944)	5MP (2592 x 1944)

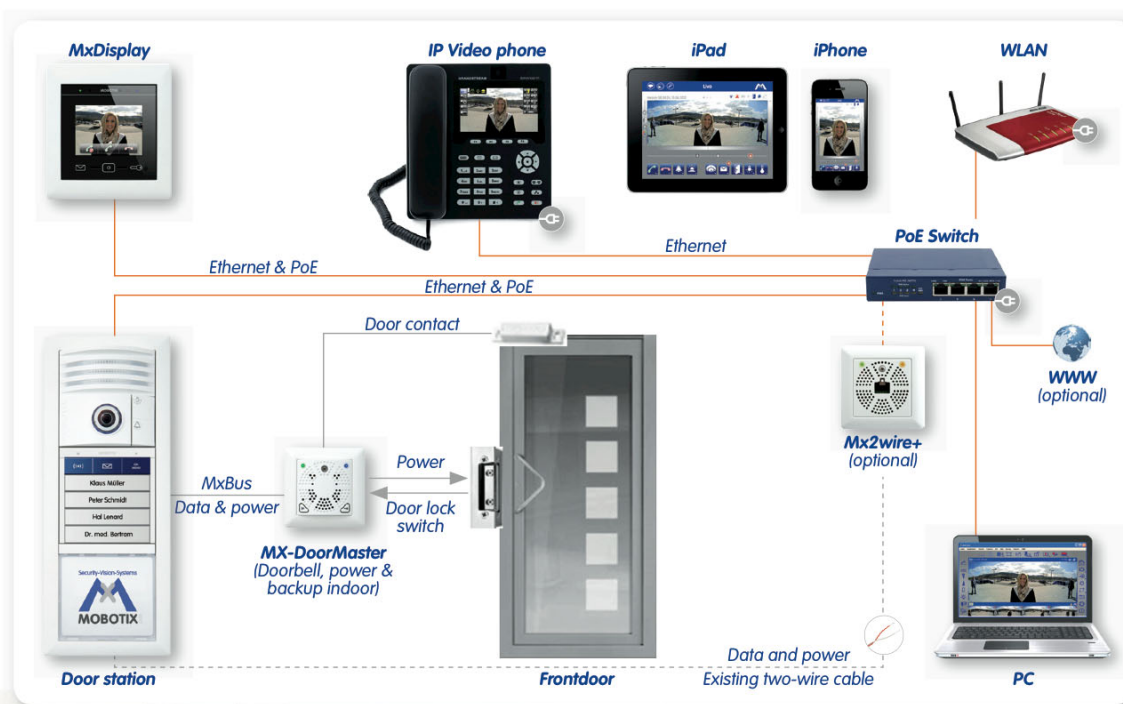
Hardware Functions		
Protection class	IP65	IP65
Temperature range -30 to +50°C/-22 to +122°F	•	•
Temporary internal DVR	64 MB	64 MB
Internal DVR, ex works	4 GB (MicroSD)	4 GB (MicroSD)
Microphone/speaker	•/•	•/•
Passive infrared sensor (PIR)	–	–
Integrated temperature sensor	•	•
Shock detector	•	•
Power consumption (typical)	< 4,5 watts	< 4,5 watts
Variable PoE class (factory default: 3)	2 or 3	2 or 3

Image Formats, Frame Rates, Image Storage		
Maximum image format (per sensor)	5MP (2592 x 1944)	5MP (2592 x 1944)
Maximum frame rate (MxPEG, max. resolution)	10 fps (5MP)	10 fps (5MP)
CIF images with 4 GB MicroSD DVR	250,000	250,000
VGA images with 4 GB MicroSD DVR	125,000	125,000
HD images with 4 GB MicroSD DVR	40,000	40,000
QXGA images with 4 GB MicroSD DVR	20,000	20,000

- available ex works
- not available



Camera Model	T25M-Sec	T25M-Sec-Night
General Functions		
Digital zoom (continuous) with panning	•	•
Codecs: Motion-JPEG/MxPEG/H.264 for SIP	•/•/•	•/•/•
Programmable exposure zones	•	•
Snapshot recording (pre/post-alarm images)	50	50
Terabyte ring buffer storage (internal/network)	•	•
Continuous recording with sound (0.2 to 30 fps)	•	•
Event recording with sound	•	•
Time and event control/flexible event logic	•/•	•/•
Weekly schedules/holidays	•	•
Web functionality (FTP, email)	•	•
Playback/QuadView and MultiView	•/•	•/•
Bidirectional sound in browser	•	•
Logo generator, animated	•	•
Master/Slave arming	•	•
Several scheduled privacy zones	•	•
Customized voice messages	•	•
VoIP telephony (audio/video, alert)	•	•
Remote alarm notification (network message)	•	•
Signal inputs/outputs	•	•
Programming interface (HTTP API)	•	•
Security Features (HTTPS/S/L, IP-based access control, IEEE 802.1X network authentication)	•	•
Video Analysis		
Video motion detector	•	•
MxAnalytics	–	–
MxActivitySensor	•	•
Video Management Software		
MxEasy (Windows/Mac OS X)	•	•
MxControlCenter (Windows)	•	•
MOBOTIX App (iOS)	•	•

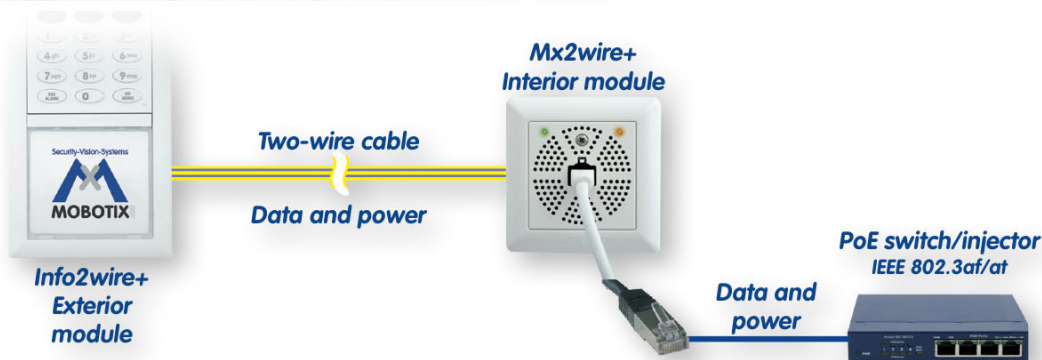
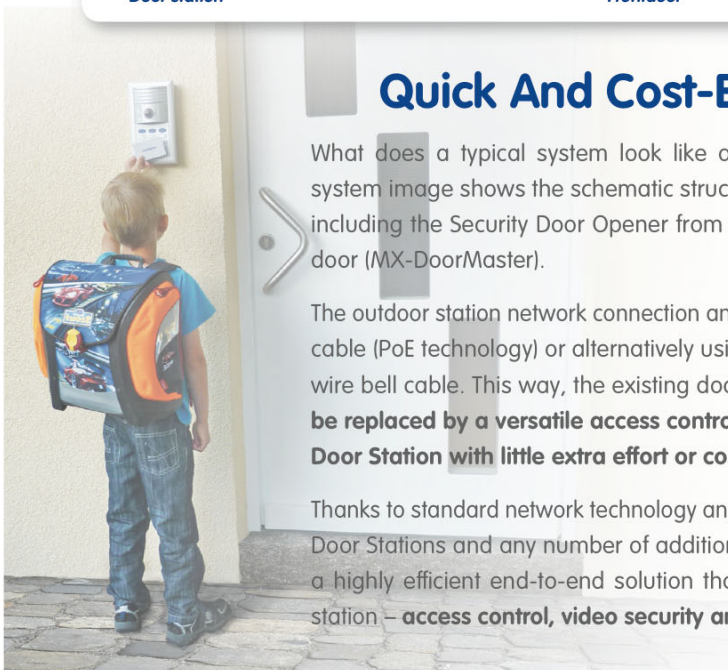


Quick And Cost-Effective Mounting

What does a typical system look like and what kind of cabling is needed? The system image shows the schematic structure of a hemispheric IP Video Door Station including the Security Door Opener from MOBOTIX for inside installation next to the door (MX-DoorMaster).

The outdoor station network connection and power supply are supplied via an Ethernet cable (PoE technology) or alternatively using the Info2wire+ expansion set via a two-wire bell cable. This way, the existing doorbell or **simple door intercom system can be replaced by a versatile access control system with a high-resolution MOBOTIX Door Station with little extra effort or cost.**

Thanks to standard network technology and intercompatibility of the MOBOTIX systems, Door Stations and any number of additional security cameras can be combined into a highly efficient end-to-end solution that can be controlled from a single remote station – **access control, video security and house automation** from a single source!



Hemispheric Camera T25-CamCore

The hemispheric camera with its fisheye lens (for a 360° panorama view) and integrated live image correction boasts a high-resolution 3.1 megapixel color sensor (or megapixel black and white sensor), speaker, microphone and 4 GB data storage for approx. 250 one-minute video clips or 60,000 VGA images.



(T25 – Camera housing and connectors, excerpt from the technical documentation)