



MOBOTIX MOVE

Product Information

MOBOTIX Spring Splash – April 2019

New Hardware & Software

- Extension Of MOBOTIX MOVE Camera Line
- MxManagementCenter (MxMC) Version 2.1 With New Smart Data License
- System Release MX-V5.2.3.x For All Mx6 Cameras x16/x26
- MxThinClient Firmware Release
- MxBell 2.1 - Free Video Remote Station App For iOS And Android Devices



Table of Contents

MOBOTIX Spring Splash 2019	Page
1. Extension Of MOBOTIX MOVE Camera Line	3
2. MxManagementCenter (MxMC) Version 2.1 With New Smart Data License	9
3. System Release MX-V5.2.3.x For All Mx6 Cameras x16/x26	14
4. MxThinClient Firmware Release	16
5. MxBell 2.1 - Free Video Remote Station App For iOS And Android Devices	17

General information: Delivery only to commercial or industrial customers • MOBOTIX assumes no liability for technical errors, printing errors or omissions © MOBOTIX AG 2019

Copyright notices: All rights reserved. MOBOTIX, the logo of MOBOTIX AG and MxAnalytics are registered trademarks of MOBOTIX AG in the European Union, the USA and other countries.

1. Extension Of MOBOTIX MOVE Camera Line



MOBOTIX MOVE

Even more choice with MOBOTIX MOVE: Six new camera models available!

With a MOBOTIX MOVE camera portfolio expanded to a total of **10 models**, you are now perfectly equipped for even more video projects. In addition to the four models launched in 2018 (2x PTZ SpeedDome, 1x BulletCamera, 1x VandalDome), **two dome and four bullet cameras have been added**. All new MOBOTIX MOVE models are weatherproof (IP66), high-quality ONVIF cameras (profile S and G) with integrated infrared illumination, automatic day / night switching with mechanical IR cut filter and 120 dB Wide Dynamic Range. The technical features of the new variants are presented on the following pages.

MOBOTIX MOVE cameras are **no decentralized IoT systems**, but classic, centrally managed ONVIF standard cameras with own firmware. MxAnalytics or MxActivitySensor are not available in the MOVE series. However, MOBOTIX MOVE cameras are recommended in all projects where there are strict specifications regarding the camera technologies to be used, which are today not yet compatible with the decentralized MOBOTIX complete video solutions (e.g., camera with ONVIF profiles S + G, WDR, integrated IR lighting, engine PTZ).

Advantages of MOBOTIX MOVE over similarly equipped ONVIF cameras from other manufacturers:

With MOBOTIX MOVE, customers use a seamless system installation - for the complete system - by our MOBOTIX video experts around the world and have access to our professional MOBOTIX support team. As a manufacturer known for high quality and reliable products, we are of course also committed to the quality of MOBOTIX MOVE cameras, which are manufactured at the same high standards as all other MOBOTIX products.

MOBOTIX MOVE cameras also offer unbeatable (license) cost advantages when used with MxMC 2.x and MOBOTIX NAS. **Any number of MOBOTIX MOVE cameras with H.264 codec** (up to 10 times less bandwidth and storage needs than MJPEG) can be connected to any MxMC workstation for a **small one-time fee** for an Integration Starter license on an MxMC workstation for an **unlimited** period of time.



Tables 1 to 3: The most important technical details of the new MOBOTIX MOVE cameras

(The technical data sheets and manuals for all MOBOTIX MOVE cameras can be found here:

www.mobotix.com > [Support](#) > [Download Center](#) > [Documentation](#))

Table 1: The already known 4MP dome and bullet cameras are now also available with a **distance varifocal lens** (9 to 22 mm). This is ideal for outdoor use when the area to be monitored is farer away, but the camera should capture it with as much detail as possible with all pixels (e.g., camera on a pole monitors the driveway).



MOBOTIX MOVE 4MP Dome/Bullet cameras with distance lens (9 to 22 mm)		
		
Type of camera	VandalDome Distance 4MP	BulletCamera Distance 4MP
Camera name	MOBOTIX MOVE VD-4-IR-D	MOBOTIX MOVE BC-4-IR-D
Order number	Mx-VD1A-4-IR-D	Mx-BC1A-4-IR-D
Special features	Weatherproof ONVIF S / G dome camera with integrated IR LEDs (up to 30 m) for day and night use; with distance lens for remote / limited surveillance areas	Weatherproof ONVIF S / G bullet camera with integrated IR LEDs (up to 30 m) for day and night use; with distance lens for remote / limited surveillance areas
Optional accessories (order no.)	Wall mount (Mx-M-VD-W), pole mount (Mx-M-VD-P), corner mount (Mx-M-VD-C), in-ceiling set (Mx-M-VD-IC), transparent/tinted dome (Mx-A-VD-DCT/Mx-A-VD-DCS)	Wall mount (Mx-M-BC-W) Pole mount (Mx-M-BC-P)
Image sensor	4MP (2688 x 1512), 1/3" Progressive CMOS	
Max. frame rate	H.264: 4MP@30 fps; MJPEG: 1080p@30 fps (max. fps with / without WDR)	
Day/night	Automatic day / night switching with mechanical IR cut filter	
Lens	Motorized zoom lens with Auto Iris	
Focal length	F1.6: 9 to 22 mm	
Image angle horizontal	35° (Wide) to 15° (Tele)	
Image angle vertical	20° (Wide) to 9° (Tele)	
Video codecs	H.264, MJPEG	
ONVIF	Profile S, G	
WDR	Ja (120 dB)	
Integrated IR illumination	Yes (IR LEDs), max. range 30 m (depending on scenery)	
IP/IK class	Weatherproof (IP66), IK10 (complete housing)	Weatherproof (IP66), IK10 (housing only, does not apply for front screen)
Ambient temperature	-30 to 65 °C (without heater); -55 to 65 °C (with heater), 10 to 90% humidity	
Connectors	RJ45, Alarm IN (1x), Alarm OUT (1x), Audio IN/OUT Terminal Block, CVBS, DC12V und AC24V	RJ45, Alarm IN (4x), Alarm OUT (1x), Audio IN/OUT 3,5 mmJack, CVBS, DC12V und AC24V
Power supply; power consumption	PoE IEEE 802.3af or DC 12V (1,14 A), or AC 24V; max. 13,68 W	PoE IEEE 802.3af or DC 12V (2,12 A), or AC 24V; max. 13,68 W

Table 2: We offer these new VandalBullet cameras with **metal housing and reinforced front screen** (Full IK10), all of which are particularly well protected against external influences. Two versions available: One with a 2.7 to 12 mm standard zoom lens and one with a 9 to 22 mm distance zoom lens.





MOBOTIX MOVE 4MP Vandal Bullet cameras Full IK10 (housing + front screen)		
		
Type of camera	VandalBullet 4MP	VandalBullet Distance 4MP
Camera name	MOBOTIX MOVE VB-4-IR	MOBOTIX MOVE VB-4-IR-D
Order number	Mx-VB1A-4-IR	Mx-VB1A-4-IR-D
Special features	Weatherproof and extremely robust (Full IK10) ONVIF S / G bullet camera with integrated IR LEDs (up to 30 m) for day and night use	Weatherproof and extremely robust (Full IK10) ONVIF S / G bullet camera with integrated IR LEDs (up to 30 m) for day and night use; with distance lens for remote / limited surveillance areas
Optional accessories (order no.)	Wall mount (Mx-M-BC-W) Pole mount (Mx-M-BC-P)	Wall mount (Mx-M-BC-W) Pole mount (Mx-M-BC-P)
Image sensor	4MP (2688 x 1536), 1/3" Progressive CMOS	
Max. frame rate	H.264: 4MP@30 fps; MJPEG: 1080p@30 fps (max. fps with / without WDR)	
Day/night	Automatic day / night switching with mechanical IR cut filter	
Lens	Motorized vario lens with „One Push“ Autofocus and P-Iris	Motorized zoom lens with Auto Iris
Focal length	F1.6: 2,7 to 12 mm	F1.6: 9 to 22 mm
Image angle horizontal	99° (Wide) to 31° (Tele)	35° (Wide) to 15° (Tele)
Image angle vertical	53° (Wide) to 18° (Tele)	20° (Wide) to 9° (Tele)
Video codecs	H.264, MJPEG	
ONVIF	Profile S, G	
WDR	Ja (120 dB)	
Integrated IR illumination	Yes (IR LEDs), max. range 30 m (depending on scenery)	
IP/IK class	weatherproof (IP66), IK10 (applies to complete housing incl. front screen)	
Ambient temperature	-30 to 60 °C (without heater); -55 to 60 °C (with heater), 10 to 90% humidity	-30 to 60 °C (without heater); -55 to 60 °C (with heater), 10 to 90% humidity
Connectors	RJ45, Alarm IN (2x), Alarm OUT (1x), Audio IN/OUT 3,5 mm Jack, CVBS, DC12V und AC24V	
Power supply; power consumption	PoE IEEE 802.3af or DC 12V (1,14 A), or AC 24V; max. 13,68 W	PoE IEEE 802.3af or DC 12V (1,14 A), or AC 24V; max. 13,68 W

Table 3: For applications where FullHD resolution is required or must not be higher, MOBOTIX offers these **compact and cost-optimized** dome and bullet cameras with standard zoom lens (2.8 to 12 mm) and only about 3 watts of power consumption (PoE).

MOBOTIX MOVE FullHD (2MP) Dome/Bullet cameras		
		
Type of camera	VandalDome FullHD (2MP)	BulletCamera FullHD (2MP)
Camera name	MOBOTIX MOVE VD-2-IR	MOBOTIX MOVE BC-2-IR
Order number	Mx-VD1A-2-IR	Mx-BC1A-2-IR
Special features	Weatherproof ONVIF S / G dome camera with integrated IR LEDs (up to 25 m) for use day and night; cost-optimized FullHD camera	Weatherproof ONVIF S / G bullet camera with integrated IR LEDs (up to 15 m) for day and night use; cost-optimized FullHD camera
Optional accessories (order no.)	Wall mount (Mx-M-VD-W), pole mount (Mx-M-VD-P), corner mount (Mx-M-VD-C), in-ceiling set (Mx-M-VD-IC), transparent/tinted dome (Mx-A-VD-DCT/Mx-A-VD-DCS)	No
Image sensor	FullHD/2MP (1920 x 1080), 1/3" Progressive CMOS	
Max. frame rate	H.264: 2MP@25/30 fps ; MJPEG: 1080p@25/30 fps (max. fps with Dual Stream/WDR)	
Day/night	Automatic day / night switching with mechanical IR cut filter	
Lens	Manually adjustable vario lens	
Focal length	F1.4: 2,8 to 12 mm	
Image angle horizontal	91° (Wide) to 34° (Tele)	
Image angle vertical	51° (Wide) to 19° (Tele)	
Video codecs	H.264, MJPEG	
ONVIF	Profile S, G	
WDR	Yes (120 dB)	
Integrated IR illumination	Yes (IR LEDs), max. range 25 m (depending on scenery)	Yes (IR LEDs), max. range 15 m (depending on scenery)
IP/IK class	weatherproof (IP66), IK10	weatherproof (IP66), IK: no
Ambient temperature	-30 to 60 °C , 10 to 90% humidity	
Connectors	RJ45	
Power supply; power consumption	PoE IEEE 802.3af; max. 2,9 W	PoE IEEE 802.3af; max. 2,9 W

What accessories are available for the new MOBOTIX MOVE cameras?

All accessories (wall, ceiling and pole mounts, replacement domes clear / tinted) available for the 2018 MOBOTIX MOVE VandalDome and BulletCamera can also be used for the new MOBOTIX MOVE VandalDome and Bullet Models (except for the MOBOTIX MOVE BC-2-IR FullHD Bullet Camera). The MOBOTIX NPA-PoE-Set or MOBOTIX MxSwitch can be used for the PoE power supply of these new MOBOTIX MOVE cameras. Additional standard accessories required for the installation of MOBOTIX MOVE cameras, such as memory cards, supply power supplies (if not supplied via PoE), network cables, etc., can be obtained from specialist dealers.



New MOBOTIX MOVE VandalDome Cameras

Order Number	EAN	Description
Mx-VD1A-4-IR-D	4047438034371	MOBOTIX MOVE VandalDome VD-4-IR-D, Distance
Mx-VD1A-2-IR	4047438034425	MOBOTIX MOVE VandalDome VD-2-IR, FullHD
Mx-M-VD-IC	4047438031684	In-ceiling set for all MOBOTIX MOVE VandalDome cameras
Mx-M-VD-W	4047438031691	Wall mount for all MOBOTIX MOVE VandalDome cameras
Mx-M-VD-P	4047438031707	Pole mount for all MOBOTIX MOVE VandalDome cameras
Mx-M-VD-C	4047438031738	Corner mount for all MOBOTIX MOVE VandalDome cameras
Mx-A-VD-DCT	4047438031721	Standard replacement dome for all MOBOTIX MOVE VandalDome cameras
Mx-A-VD-DCS	4047438031714	Tinted replacement dome for all MOBOTIX MOVE VandalDome cameras



New MOBOTIX MOVE BulletCameras

Order Number	EAN	Description
Mx-BC1A-4-IR-D	4047438034388	MOBOTIX MOVE BulletCamera BC-4-IR-D, Distance
Mx-VB1A-4-IR	4047438034395	MOBOTIX MOVE VandalBullet VB1A-4-IR, FullIK10
Mx-VB1A-4-IR-D	40474380343401	MOBOTIX MOVE VandalBullet VB1A-4-IR-D, Full IK10
Mx-BC1A-2-IR	4047438034418	MOBOTIX MOVE BulletCamera BC-2-IR, FullHD
Mx-M-BC-W	4047438031660	BulletCamera Wall mount for MOBOTIX MOVE BulletCameras BC-4-IR, BC-4-IR-D, VB-4-IR and VB-4-IR-D
Mx-M-BC-P	4047438031677	BulletCamera Pole mount for MOBOTIX MOVE BulletCameras BC-4-IR, BC-4-IR-D, VB-4-IR and VB-4-IR-D

New Mx-System releases MxMOVE-MB201904xxRS / RP for all MOBOTIX MOVE camera models

Please note that as **End of May 2019**, two new firmware service releases MxMOVE-MB20190xxxRS and MxMOVE-MB20190xxxRP will be available with **bug fixes and stability improvements for all MOBOTIX MOVE cameras**.

Download and Release Notes: mobotix.com > [Support](#) > [Download Center](#) > [Software Downloads](#) > [Cameras](#)

What Are The System Requirements For Using MOBOTIX MOVE Camera Software In A Browser?

In order to be able to start the camera by entering the IP address through a Web browser (*with the MOBOTIX default access data: admin / meinsm*), please ensure that the PC has a good network connection and fulfills the following system requirements:

Components	System requirements
PC	Minimum: Intel® Core™ i5-2430M @ 2.4 GHz or higher and 4 GB RAM Recommended: Intel® Core™ i7-870 @ 2.493GHz or higher and 8 GB RAM
Operating System	Windows VISTA / Windows XP / Windows 7 / Windows 10
Web browser	Microsoft Internet Explorer 11.0 or higher (recommended), Chrome, Firefox, Safari
Network card	10Base-T (10 Mbps), 100Base-TX (100 Mbps) or 1000Base-T (1000 Mbps)
Viewer	ActiveX control plug-in for Microsoft Internet Explorer

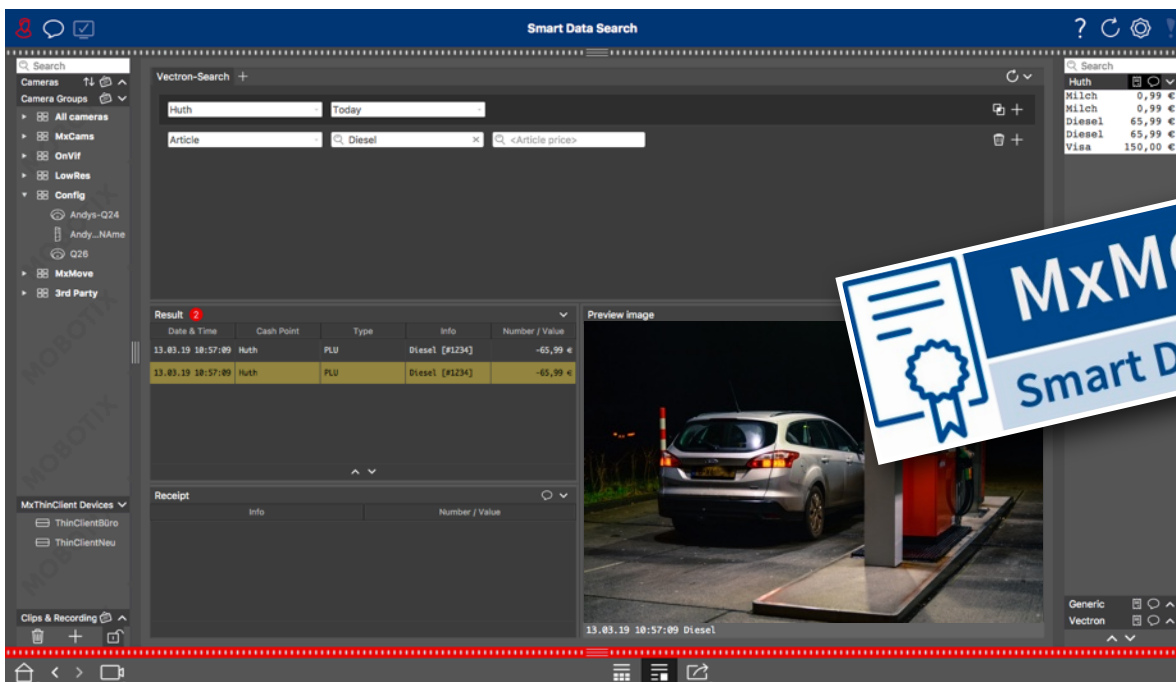
What Operating Manuals Are Available For MOBOTIX MOVE Cameras?

Each camera comes with a Quick Install guide included in the packaging. Technical datasheets and a camera and software manual (instead of the usual MOBOTIX online operating help) are also available for download in PDF format from our website (www.mobotix.com > [Support](#) > [Download Center](#) > [Documentation](#) > [User Manuals](#) > [MOBOTIX MOVE Cameras](#)).

The Key Differences Between MOBOTIX MOVE Cameras And MOBOTIX Mx6 Video Systems:

	MOBOTIX MOVE	MOBOTIX Mx6
Sensor resolution	4MP/3MP/2MP	6MP
Day/night sensors	Automatic switching from color to BW night image (mechanical IR blocking filter)	Equipped with separate day and night sensors (dual lens camera); the color day sensor is also suitable for dimly lit scenarios (such as moonlight), thanks to Moonlight technology
Lens	Manual or motorized vario lens, horizontal image angle of 1° to 103° (depending on model)	HD premium lens with fixed focus lengths, horizontal image angle of 8° to 180° (depending on model)
H264/MJPEG	Yes	Yes
MxPEG+	No	Yes
WDR	Yes (120 dB)	No
MxBus connection	No	Yes (entire Mx6B series)
Alarm In/Out	Yes	Via accessories (Interface Boxes)
MxMessageSystem	No	Yes
Basic Video Motion	Yes	Yes
Intelligent Video Analytics	No	Model-dependent standard: MxAnalytics (Heat map, people counting, behavior analysis)
Intelligent Video Motion	No	Yes
SD card	SD card slot, no card	4GB card pre-installed
Failover Storage System	No	Yes (via MxFFS)
ONVIF	Profiles S, G	Profile S
Genetec Protocol (embedded)	No (Integration only via ONVIF)	Yes
MxThinClient integration	No	Yes
MxMC VMS integration	Yes, via ONVIF S with MxMC 2.0 and later	Yes, incl. Basic Config with MxMC 1.8 and later
MxBell App integration	No	Yes
MTBF	40,000 hours	80,000 hours
Standard warranty	Two years	Three years
Warranty extension*	No	Optional for up to eight years in total

2. MxManagementCenter (MxMC) Version 2.1 With New Smart Data License



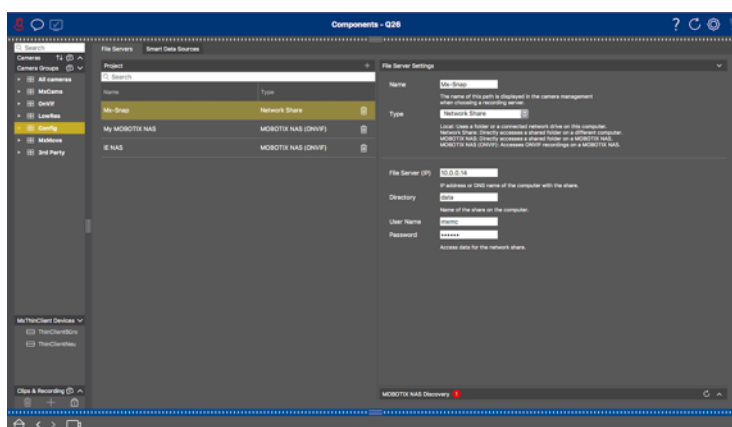
MxManagementCenter (MxMC) is the powerful, intuitive MOBOTIX video management system for Windows and macOS. Although the standard equipment is becoming more extensive from version to version, the already top-equipped (basic) version of MxMC is completely free of charge. The latest version MxMC 2.1 offers again valuable free as well as licensed new features and is available for download with description of all new features / improvements in the release notes on the MOBOTIX website from **midth of April 2019**. All licenses already **activated** from MxMC 1.7 will be automatically transferred when updating to MxMC 2.1.

The most important innovations of MxMC 2.1:

- *License-free*: New view "Components" with automatic network search for MOBOTIX NAS devices
- *Licensed*: New Features for Advanced Configuration view
- *Licensed*: Use of the universal Smart Data interface with new Smart Data license

New view Components (license-free)

You open the new **Components** view in MxMC 2.1 via the views selector in the lower left corner. With this view, which we will continue to expand in the future, we offer the admin users a central location via which the integration and configuration of recording locations such as file server or MOBOTIX NAS, connected cash register systems or other data sources can take place. Another advantage of the Components view is the network search of MOBOTIX NAS devices with automatic collection of network data.



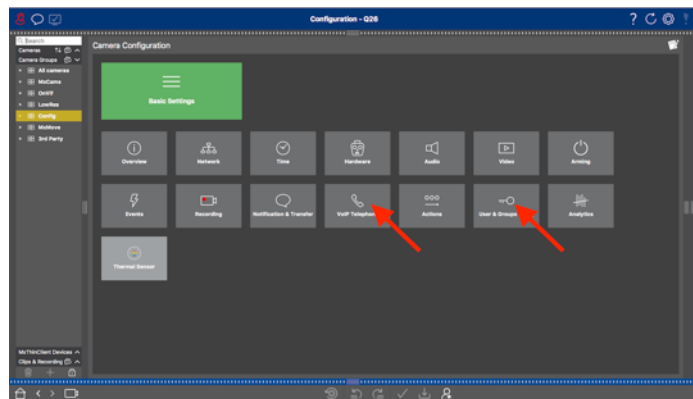
Configuration of MOBOTIX IoT cameras: Even more possibilities with the Advanced Config (licensed)



The big advantage of the MxMC built-in configuration solution is that you no longer need to call every single camera in the browser, if you want to review and change the settings of an entire camera group. In the Configuration view, it is possible to activate, for example, the arming of up to 80 cameras in a group at the same time. Or to check the status of privacy-relevant camera settings such as microphone on / off in the course of daily maintenance and inspection and, if necessary, to adjust directly. With a (paid) Advanced Config license, **more than three quarters** of the total camera settings available in the firmware can be conveniently managed directly in MxMC. Depending on the size of the system, you can save **several hours** of operating expenses!

The configuration view in MxMC 2.1 is available for all MOBOTIX IoT cameras of the Mx6 platform (x16 / x26) and the P3 platform (x14 / x15 and x24 / x25) with the latest firmware versions. The MxMC-integrated ONVIF-S cameras (MOBOTIX MOVE, third party) can not be configured via MxMC. Equipped with a new or already activated **Advanced Config license** and the corresponding rights, within the MxMC 2.1 configuration view you can now also choose the **VoIP telephony** and **Users & Groups** camera and system settings:

You will get the MxMC view **Configuration** via the view selection on the bottom left. You now have access to the basic settings (always available & license-free) and Advanced Config settings stored in the **gray tiles**, which are otherwise accessible only via browser and camera firmware. The two newly available tiles in MxMC 2.1 **VoIP Telephony** and **Users & Groups** are marked with red arrows.

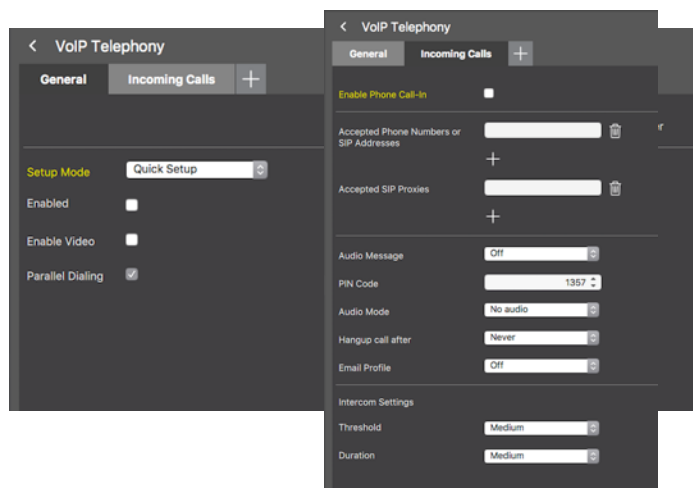


VoIP Telephony

The click on the tile opens the window with the settings options. Basically, here are all the summarized points stored in the camera firmware under the Admin menu *SIP Server Settings*, *SIP Client Settings* and *Incoming Calls Settings*.

Users & Groups

Behind this new tile are the settings that can be found in the camera firmware under the Admin menu *Users and Passwords* and *Group Access Control Lists*.



Video-based data analysis with Smart Data Interface (licensed): Universal interface for transaction and process data processing with camera recordings

An intelligent IP video solution from MOBOTIX opens up completely new perspectives in addition to classic security. Since the release of MxMC 1.7 in early 2018, MOBOTIX, in conjunction with the **POS Single Cash Point license**, enables direct integration of **Vectron** POS systems into the video management system. MxMC provides a very useful and easy-to-use search and sort function for the transaction data of the POS system. Cash transactions can be filtered, for example, by item, price or staff member. MxMC scans POS data by keywords and provides the relevant transaction with the relevant videos or images that can be **played back directly** and / or **exported**. Disputed cash transactions can be safely documented for evidence purposes. To play the exported videos, **no** POS license is required.

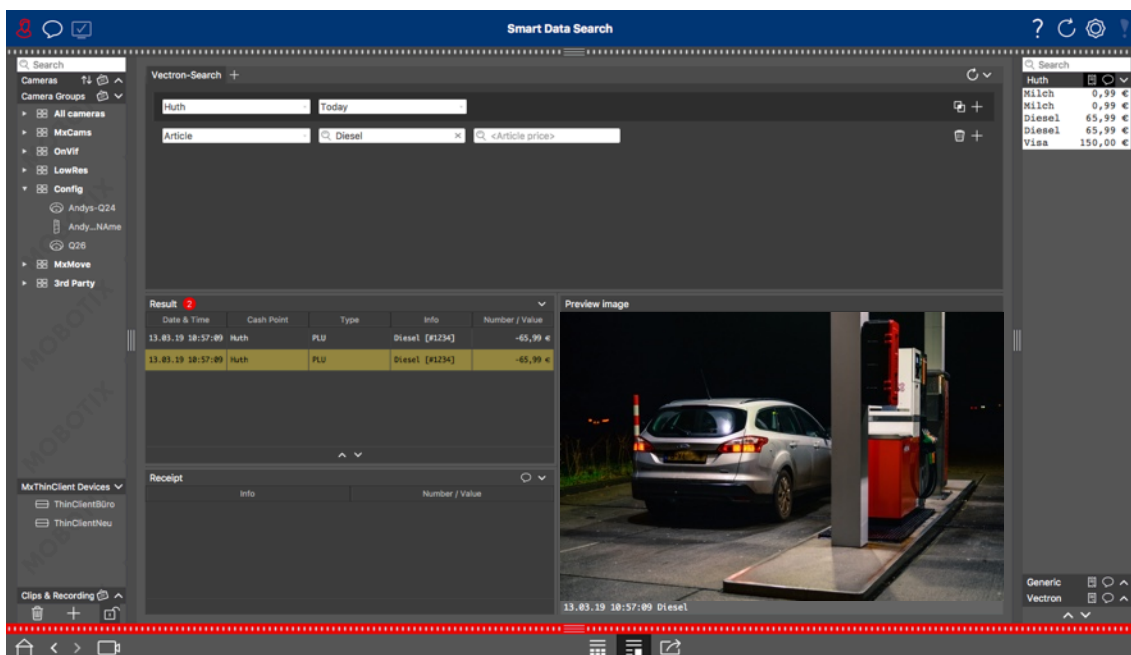


Smart integration solution now available for other POS systems and universal data sources

MOBOTIX has made the data interfaces more flexible for MxMC 2.1 and for the latest Mx6 camera firmware (see later in this document). Under the name **Smart Data Interface**, we now offer other manufacturers besides Vectron the option of integrating a MOBOTIX POS solution into their own cash register system (e.g., HUTH). To do this, instead of the POS Single Cash Point license, which is still available for pure Vectron integrations, the new **Smart Data license** is required (non-maturity, unlimited lifetime).



But also the integration of **any other data sources** except cash registers is possible now. Likewise, the stored external data can be searched for MxMC according to one or more criteria and the results then can be compared with the simultaneously recorded camera recordings. In order to take this universal approach into account, MxMC 2.1 renamed the formerly **Retail** view to **Smart Data Search**. This view is only available if at least one data source - via the Components view - has been added to MxMC 2.1.



Application examples for the new Smart Data license as general POS solution (POS system is not from Vectron):

- *Quick check whether change was given correctly* -> Customer complains that he has paid with 100-euro note, but has only received 20 euros change back
- *Search for amount, article, payment method, etc.* -> proof of purchases over a certain total amount, cancellations, empty bills, cash transactions without a transaction, card payments, checking if certain items were proof of age




Application examples for the new Smart Data license with universal data sources (no POS system):

- *Truck scales* -> At a freight forwarding the trucks drive on their departure a vehicle scale with driver self-service. This process is recorded by a MOBOTIX camera around the clock. The freight forwarder can quickly see the next day when the scale was used by whom at night and which weights were determined for each vehicle.
- *Access authentication via license plate recognition* -> An external, software-based system monitors and regulates the access and exit routes to a secure area via the registered license plate numbers. The event data (license plate, time, etc.) can now be searched via MxMC 2.1 and linked with the corresponding image information of one or more Mx6 cameras to obtain additional information from different perspectives: "When did the red station wagon with the xy license plate last drive? off the field and how many people sat in the car? "



Advantages of the MOBOTIX Smart Data solution:

- Simple and scalable total solution for a variety of applications, regardless of industry
- Compatible with any data source that meets the technical specifications of the MOBOTIX Smart Data interface - [*MOBOTIX webinar on this topic will be available shortly \(please check our training calendar\)*](#)
- Safely encrypted storage of video data directly in the camera or on server / NAS / PC
- Real-time transfer of all relevant transaction data
- Quick detection and elucidation of irregularities as well as preventive effects
- Evaluation of video images on site or via Internet connection worldwide from any MxMC workstation

Note: The Smart Data solution is a valuable tool for **MOBOTIX Solution and Technology Partners**. Upon request, we will gladly provide you with the **technical framework for integrating external Smart Data Sources**. Detailed information on the **operation of Smart Data search** can be found on the help pages of MxMC. These can be opened by clicking on the question mark symbol  top right in the header of the program.

■ Your contact for requests about Smart Data solutions: strategicalliances@mobotix.com

How to buy and activate MxMC licenses

For end customers, the acquisition of MxMC licenses or activation IDs for the MxManagementCenter takes place via the same distribution channel as the acquisition of a MOBOTIX camera directly a certified MOBOTIX partner. A MOBOTIX MxMC license can then be forwarded by the MOBOTIX partner, who supports the end customer, directly from our license portal directly to the end customer by e-mail (MOBOTIX partners receive their personal portal access data when first ordering a license).

MxManagementCenter complies with the industry standard ONVIF-S

In addition to all currently available IoT and MOBOTIX MOVE cameras, the MxManagementCenter version 2.0 and higher is also [ONVIF-S-compliant](#) and can also integrate ONVIF-compliant third-party cameras. This makes MOBOTIX customers much more flexible and efficient in the planning of new security solutions and in the expansion of existing MOBOTIX systems.



Integration of MxThinClient with MOBOTIX MOVE camera

MxThinClient devices with firmware V1.1.1.x also support MOBOTIX MOVE cameras and can therefore also be integrated in MxMC (see also section 4 in this document).

Download and Release Notes of MxManagementCenter 2.1:

mobotix.com > [Support](#) > [Download Center](#) > [Software Downloads](#) > [MxManagementCenter](#)

MxManagementCenter Version 2.1 for Windows and Mac OS X	
Description	Order Number
MOBOTIX video management software MxManagementCenter (MxMC) • Versions 2.1 for Windows (Vista or later) or macOS (10.9 or higher) • Language packs: English, German, French, Spanish, Italian, Russian, Turkish, Portuguese, Japanese • System requirements: 2 GHz processor (min.), at least 2 GB RAM, video card with support for OpenGL V2.1 • Download free of charge: www.mobotix.com > Support > Download Center > Software Downloads > Cameras > MxManagementCenter	Mx-SW-MC
MxMC Smart Data Lizenz for connecting an external data source (Smart Data Source) to a MxMC workstation (as of MxMC 2.1) • No time limit for use, unlimited number of users per workstation • Download via external license portal (access data required)	Mx-SW-MC-SDATA
MxMC POS Single Cash Point License for connecting a cash register to an MxMC workstation (MxMC 1.7 or higher)	Mx-SW-MC-POS
MxMC Advanced Config License for using the advanced configuration with a MxMC workstation (as of MxMC 2.0)	Mx-SW-MC-ADCON
MxMC Integration Starter License for the general use of H.264 with a MxMC workstation (as of MxMC 2.0) for live images, playback and/or export	Mx-SW-MC-STARTER
MxMC Integration Channel License for using an additional video channel from an external ONVIF-S compliant IP camera with a MxMC workstation (as of MxMC 2.0)	Mx-SW-MC-CHAN
MxMC Advanced Service License 1 Year for using the advanced system service and the MxMC Health Check with a MxMC workstation (as of MxMC 2.0) • Validity: 1 year/12 months	Mx-SW-MC-AS-1
MxMC Advanced Service Lizenz 2 Years • Validity: 2 years/24 months	Mx-SW-MC-AS-2
MxMC Advanced Service License 5 Years • Validity: 5 years/60 months • Unlimited number of users per workstation • Download via external license portal (access data required)	Mx-SW-MC-AS-5

3. System Release MX-V5.2.3.x For All Mx6 Cameras x16/x26

The system release 5.2.3.x is designed and usable for all MOBOTIX Mx6 cameras of the A- and B-series x16 / x26. It is ready for download on the MOBOTIX website from mid of April 2019 with a detailed release note descriptions of all new features and improvements.

Support of the new Smart Data interface integrated in MxMC 2.1

To use the new **Smart Data Search** in MxManagementCenter 2.1, the x16 / x26 camera linked to the Smart Data Source (external data source, e.g., HUTH cash register, ANPR system) requires the universal Smart Data interface that is available from this system release.



Dual core image processing for significantly higher frame rates

The image processing in the camera, which is usually very compute-intensive due to additional image rectification in real time, will now be optimally distributed to both processor cores of the Mx6 system platform. As a result, this leads to considerably higher frame rates, especially under heavy computational load (high resolutions, numerous camera functions activated at the same time). In an internal test series even a **doubling of the frame rate** could be measured with the new camera firmware under the most demanding conditions (activated image equalization, very high to maximum resolution and a lot of movement in the image).

3D noise reduction for optimized picture quality (Temporal Noise Filtering)

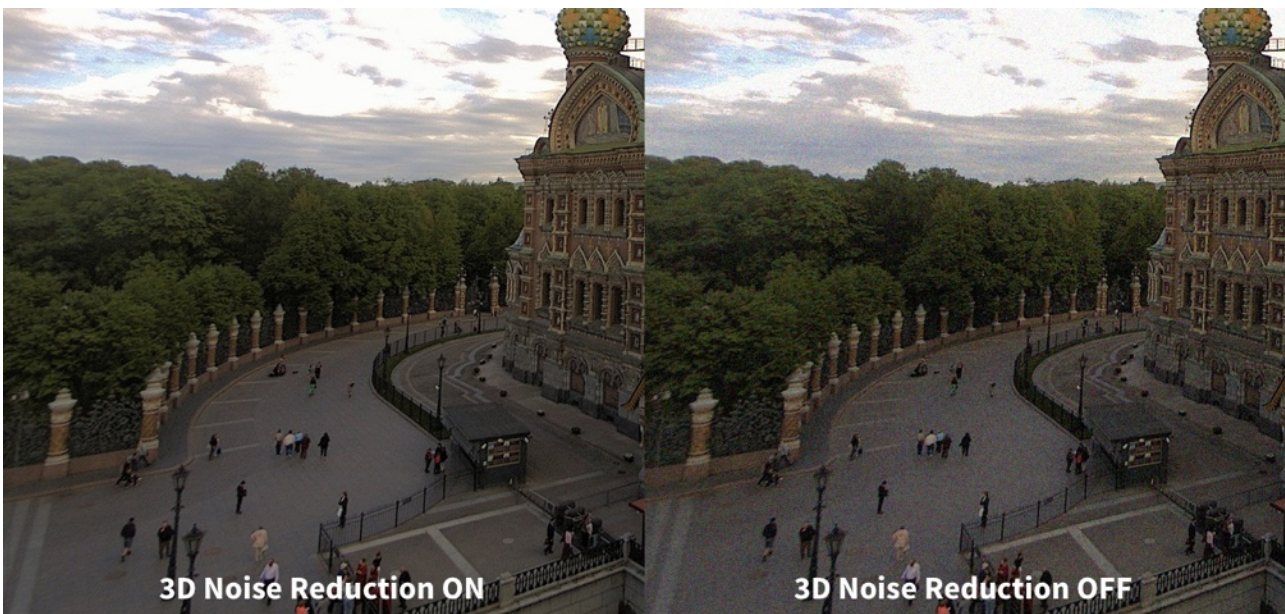


Image noise refers to the deterioration of the digital camera image due to interference that has no relation to the image signal. The disturbing pixels differ in color and brightness from those of the actual image. Image noise has an impact on the optical image quality and detail resolution, especially in low light conditions. With the new digital 3D noise reduction (3DNR), which can optionally be activated in the camera firmware (*Setup Menu > Image Control > General Image Settings > Noise Filtering > Temporal Noise Filtering*), MOBOTIX offers the possibility of camera-side suppression of image noise with a "spatial" noise reduction process: In 3DNR, the pixels are evaluated and optimized via a frame-by-frame comparison. MOBOTIX 3DNR makes the image clearer and sharper and should therefore always be activated when maximum image quality is required even in low light.

In daylight or sufficiently good artificial lighting, the 3DNR offers barely visible changes in image quality. Anyone who is primarily interested in a maximum high frame rate, must know that an activated 3D noise reduction leads to a certain reduction in frame rates due to the higher computational load.

On average, around 25% less bandwidth and storage requirements due to 3D noise reduction

Activated 3D noise reduction also **reduces** the size of an image file and thus the required bandwidth and storage space required. With a 3DNR activated around the clock under changing light conditions in the outdoor area, our practical tests resulted in an average daily data saving of **25 percent!**

Simplified implementation of a MOBOTIX Mx6 camera in the GENETEC Security Center

After a phase of change, MOBOTIX has opened up its technologies and integration processes to the market and is ready to cooperate with outstanding companies in the industry. For example, in 2018 MOBOTIX was named a Platinum Partner by Genetec Inc., a leading technology provider of unified security, public security, operations, and business intelligence solutions. As part of this partnership, the MOBOTIX Mx6 product lines for outdoor, indoor and thermal cameras are officially supported in the Genetec Security Center (version 5.5 or higher). The integration includes the MxPEG codec as well as intelligent video analytics tools and behavior detection.



With the new system release, **when the camera is first started up, the Quick Installer asks** whether Genetec Mode (Genetec Integration Protocol) should be activated. This allows the camera to be automatically detected and configured by Genetec Security Center (current version: 5.8). Many additional configuration steps that had been necessary before are eliminated, resulting in **much easier and faster Genetec integration** of MOBOTIX cameras.



Another major advantage of a MOBOTIX camera in the Genetec Security Center is the **fully cyber-encrypted HTTPS communication** certified by Genetec from version 5.7. From the camera to the Genetec VMS workstations, the globally esteemed MOBOTIX [Cactus Concept](#) for a robust overall video system is successfully implemented here as well.

Download And Release Notes: mobotix.com > [Support](#) > [Download Center](#) > [Software Downloads](#) > [Cameras](#)

System Release MX-V5.2.3.x for all MOBOTIX Mx6 Cameras	
Description	Release
Camera firmware for all MOBOTIX Mx6 cameras from the x16/x26 series with dual-core processors and 6MP or thermal sensors • Supports ONVIF Profile S including audio functions • Supports SIP audio • Languages: German, English, Chinese, French, Italian, Japanese, Portuguese, Spanish, Russian, Turkish • Download free of charge: www.mobotix.com > Support > Download Center > Software Downloads > Cameras	5.2.0.x

4. MxThinClient Firmware Release



Now also for MOBOTIX MOVE cameras: IP video interface for live image display of MOBOTIX cameras and door stations on a monitor / TV set

With the [MxThinClient](#) PoE-powered network device, MOBOTIX offers a clever and compact solution for displaying the live image of a MOBOTIX camera on a monitor or TV set with an HDMI connection. For this purpose, the MxThinClient is connected via a network cable to a free PoE port of a switch to which the camera is also connected. The connection from the MxThinClient to the screen is made via HDMI cable.

MxThinClient devices with firmware V1.1.0.3 and higher can also be integrated in MxManagementCenter (version 1.7 or higher). **With several MxThinClients in the system, entire process control centers can be controlled quickly and easily with just a few mouse clicks via MxMC.** MxThinClient devices are inserted as a separate device type via the device bar of the MxMC and managed in the MxThinClient device area.

New: Support for all MOBOTIX MOVE cameras

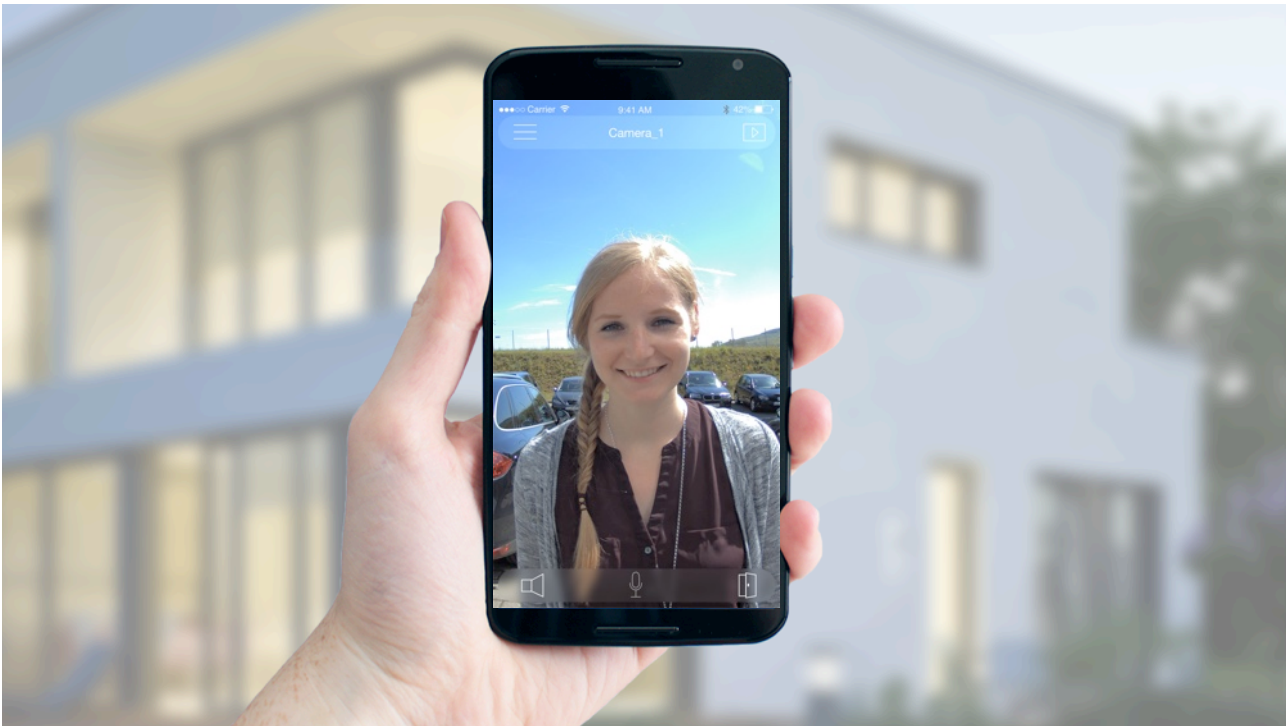
Equipped with the latest **firmware V1.1.1.x** which can be downloaded free of charge from MOBOTIX, MxThinClient can also display all MOBOTIX MOVE cameras in H.264 mode on a monitor. The distribution of MOBOTIX MOVE cameras to a monitor wall, which can easily be performed by MxMC, is also supported. Third-party cameras with ONVIF S can currently not be supported by MxThinClient.



Download and Release Notes: mobotix.com > [Support](#) > [Download Center](#) > [Software Downloads](#) > [MxThinClient](#)

System Release MxThinClient 1.1.1.x	
Description	Release
Device firmware for all MxThinClient (Mx-A-TCLIENTA) • Integration of all MOBOTIX IoT cameras (from x14 / x24) and MOBOTIX MOVE cameras • Free download: www.mobotix.com > Support > Download Center > Software Downloads > MxThinClient	1.1.1.x

5. MxBell 2.1 - Free Video Remote Station App For iOS And Android Devices



The mobile remote station for MOBOTIX IP video door stations and IoT cameras. Now with a facelift design and push notifications for all door station and camera events. In the development of MxBell, in addition to the ease of use and clarity, the greatest emphasis was placed on maximum stability, especially with low connection quality. The new MOBOTIX App MxBell 2.1 will be available for free download from mid of April 2019 on the App Store (iOS 11+) and the Google Play Store (Android 5.0.0+).

The MOBOTIX door station app is now even better suited also for IoT cameras. Free for Android and iOS.

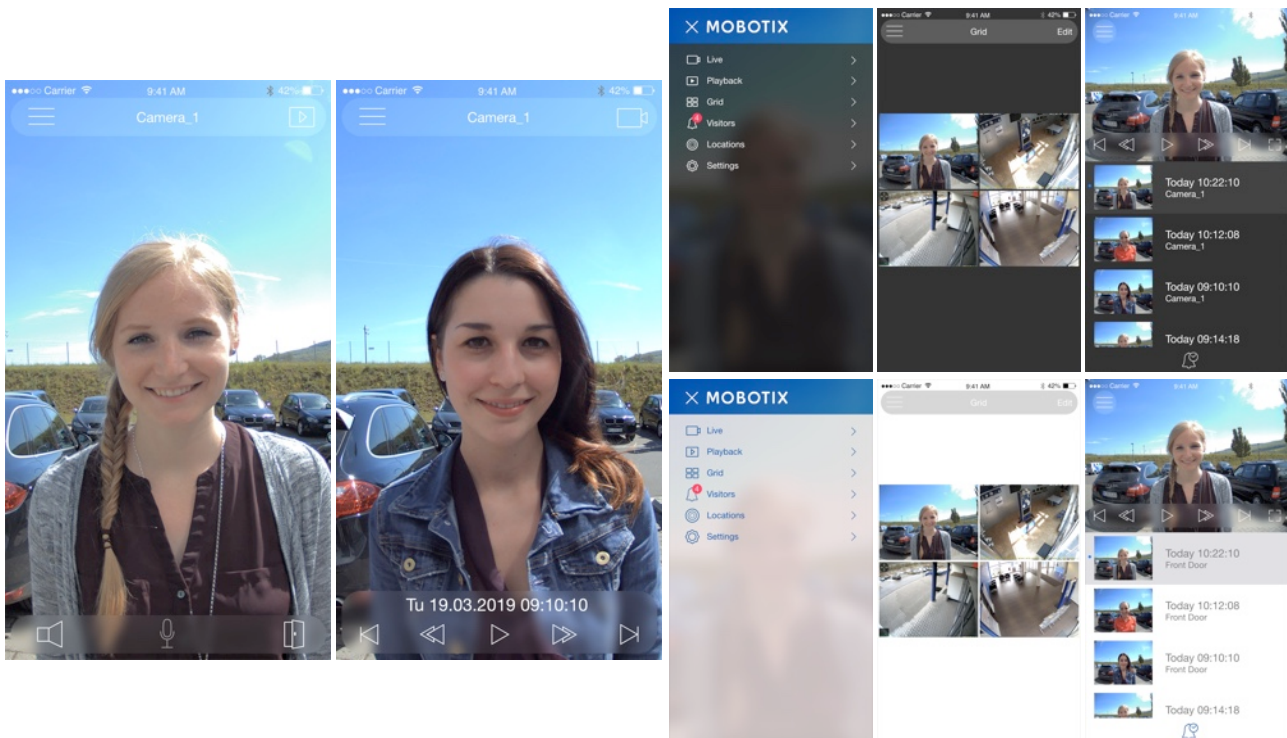
MxBell shows the ringing message of a MOBOTIX IP video door station and live views of MOBOTIX cameras on your smartphone or tablet. Search the latest events on the door station / camera in Playback view. View up to four different livestreams from cameras in grid view. automatic camera search, live view, camera connection via SSL and display of connection status.

Basic Highlights from MxBell:

- Shows ringing messages from MOBOTIX IP video door stations (including push notification)
- Shows alarms (event messages) from MOBOTIX IoT cameras (including push notification)
- Live views of MOBOTIX IP cameras with gesture-controlled PTZ function
- Open the door, speakerphone
- Playback View provides access to the latest recorded events from cameras and door stations
- Grid view shows four different livestreams from MOBOTIX door stations or IP cameras simultaneously
- Automatic camera search, live view and camera connection via SSL
- Display of connection status
- Supports remote connections and mobile data

Additional highlights of the latest version 2.1:

- The facelift of this version offers contemporary design and an improved user experience thanks to the **overlay surface** features.
- Now also the **alarms (events)** of the integrated IoT cameras (with camera firmware as of 5.2.2.x) can trigger a push notification.
- The **Live, Playback and Grid** views can now show the camera images as a full screen with one tap; another tap switches back to show the overlay controls.
- The **Dark Theme** adds a fresh look to MxBell, while the background of the default theme has been changed to a brighter shade of white (see screenshots below for direct comparison).
- Different pre-defined **Ring Tones** for ring and alarm notifications provide a great way to differentiate between these two audible notification types.
- The new view **Visitors** view collects the ring events of all door stations to provide an overview of all visitors that rung a doorbell (during the last 7 days).
- Via the signal outputs of an Mx6 camera, the app function **Open the door** can also be realized even without any door station camera T2x.



System Requirements:

- From **iOS 11** and **Android 5.0.0**
- MOBOTIX IP Video Door Stations ("P3PXA320") with **Firmware 4.7.2.18 or higher**
- MOBOTIX IoT Cameras ("P3") with **Firmware 4.7.2.18 or higher**
- MOBOTIX IoT Cameras ("Mx6") with **Firmware 5.2.1.4 or higher**

MxBell 2.1 will be available on the App Store and Google Play Store from mid of April 2019!

Follow the release notes before installing the app. You will find these notices here on mobotix.com:

[Support](#) > [Download Center](#) > [Software Downloads](#) > [MxBell](#)