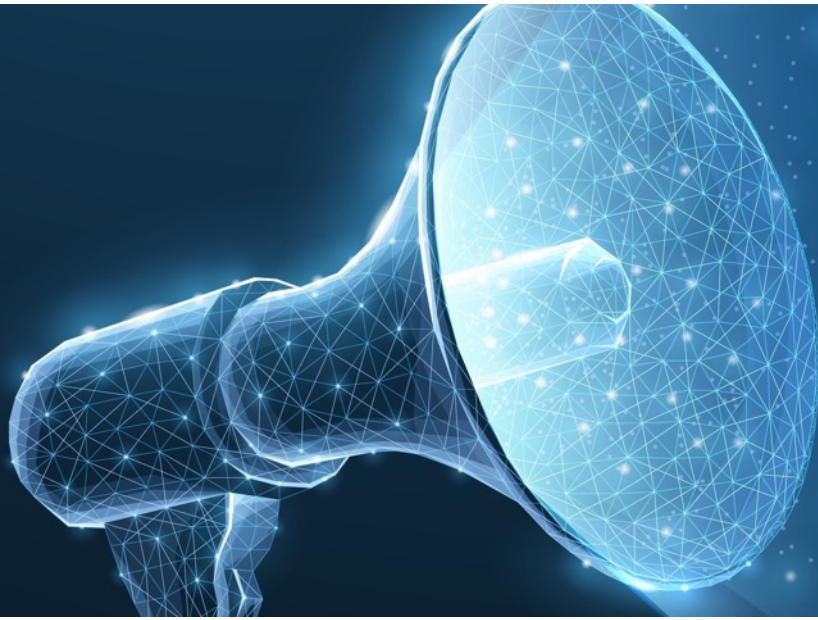




MOBOTIX PRODUCT NEWS – October/November 2023



- MOBOTIX c71 NurseAssist - powered by Kepler Vision Technologies
- MOVE Multisensor PTZ Combo 20+2MP
- Software Updates: CLOUD, VMS, NAS, MOBOTIX 7, MOVE
- Product Discontinuations (End of Life)

Table of Contents

1. Webinar and Software Updates
2. MOBOTIX c71 NurseAssist - powered by Kepler Vision Technologies*
3. MOBOTIX MOVE Vandal Multisensor PTZ Combo 20+2MP
4. MOBOTIX CLOUD Updates
5. Milestone XProtect Plug-Ins
6. MOBOTIX NAS Updates
7. MOBOTIX 7 Firmware and App Updates, MOVE Software Updates
8. Product Discontinuations (End of Life - EoL)
9. Important Links and Downloads

* Currently not available for USA, Canada & Latam.

Notes: Subject to change without notice - MOBOTIX assumes no liability for technical errors, typographical errors or omissions - © MOBOTIX AG 2023 - MOBOTIX is a trademark of MOBOTIX AG registered in the European Union, the USA and other countries - All rights reserved.

1.

WEBINAR AND SOFTWARE UPDATES

Invitation to the Webinar

Join our campus team for an online product announcement on November 23 or November 30, 2023 for more product insights.

We look forward to your participation and to your questions!



Recordings of our webinars and many other courses can also be found free of charge at <https://www.mobotix-ecampus.com>.
You do not have access to the **MOBOTIX eCampus** yet? Then send us a short email to ecampus@mobotix.com

SAVE THE DATE:



Estimated duration approx. 1 hour

English

08:30 am and 04:00 pm CET

▶ [REGISTER NOW](#)

German

02:00 pm CET

▶ [REGISTER NOW](#)

SAVE THE DATE:



Estimated duration approx. 1 hour

English

08:00 am and 04:00 pm CET

▶ [REGISTER NOW](#)

German

09:00 am CET

▶ [REGISTER NOW](#)

Software Updates

Latest updates 2023

- October 31: MxMOVE NVR CMS Release mb20221031CMS
- October 26: MOBOTIX Plug Ins Milestone XProtect
- October 23: MOBOTIX MOVE releases mb20230830NX, mb20230830SX, mb20230830UX, mb20230731UX_4K_ALPR, mb20230830UX_8G, mb20231018YX, mb20231013NVR64, mb20231013NVR816
- October 16: MX-System Release 5.4.9.4-r1 for MOBOTIX Mx6 Cameras x16/x26
- October 9: MX Certified Apps Release 2023-09-29
- October 6: MOBOTIX 7 MX System Release 7.3.2.92
- September 25: MOBOTIX HUB DriverInstaller 129b
- August 31: MOBOTIX HUB 2023 R2; MOBOTIX CLOUD App Version 8.3.3
- August 11: MOBOTIX LIVE App iOS V2.6.5 (App Store)
- August 4: MOBOTIX HUB Security Patches 2023-08-04; MOBOTIX NAS QVR Pro Server 1.2.5.1
- July 14: MOBOTIX HUB DriverInstaller 128a
- July 3: MOBOTIX HUB Plug-Ins 2023-07-03, MOBOTIX HUB Security Patches 2023-07-03
- June 22: MOBOTIX MOVE Releases mb20230419UX, mb20230420NX, mb20230420UX_8G, mb20230426RP, mb20230426RS, mb20230504SX
- May 16: MxManagementCenter Release 2.7.2
- April 28: MOBOTIX 7 MX System Release 7.3.2.76 - MQTT Support
- March 23 : MOBOTIX MOVE NVR Release mb20230301NVR64, mb20230301NVR816

Note on MOBOTIX software updates

Electronic systems also need to be updated from time to time in order to function optimally. You should not hesitate in doing so. Here are four good reasons why you should always consider software updates:

1. **Close security gaps:** Security is the most important reason for updating software immediately.
2. **New functions:** New features can be added by installing updates. Technology is constantly changing, and updates provide the latest features and improvements.
3. **Improving performance:** Not all software updates are security-related, but help to improve the performance of the software.
4. **Ensure compatibility:** For example, without updates, older video systems may not be able to work with newer video management systems.

Click here to go to the software download area on the MOBOTIX website: <https://www.mobotix.com/en/software-downloads>

2.

MOBOTIX c71 NurseAssist
powered by Kepler Vision Technologies

2. MOBOTIX c71 NurseAssist – powered by Kepler Vision Technologies

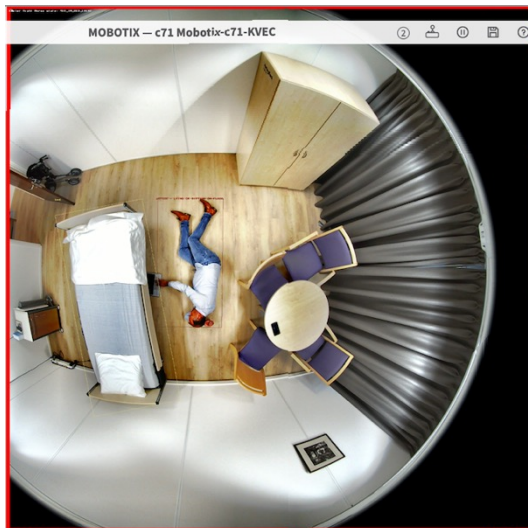


Fall detection in real time: Relieve nursing staff, protect patients

Falls detected too late and unauthorized leaving of the bed can be avoided from now on. The intelligent **MOBOTIX c71 NurseAssist** sensor technology supports hospitals, nursing homes and retirement homes effectively and economically in protecting patients - automatically around the clock.

The **MOBOTIX c71** NurseAssist solution consists of a ceiling-mounted hemispherical c71 camera with a 360° all-round view. The c71 does not function as a surveillance camera but as a highly reliable video analysis sensor with a pre-installed, AI-based healthcare app for automatic detection of persons falling or leaving the bed - and direct alerting of the nursing staff!

This innovative and particularly easy-to-implement healthcare application is the result of a cooperation between MOBOTIX and the Dutch company [Kepler Vision Technologies](#), which specializes in AI-based software solutions in healthcare and nursing.



BeyondHumanVision



MOBOTIX

2. MOBOTIX c71 NurseAssist – powered by Kepler Vision Technologies

Relief of the nursing staff



- Less alarm fatigue: avoid 99% of the false alarms of conventional systems
- Fewer rounds (load) for the staff
- More time for proactive care

Privacy protection



- The system analyzes live images without saving them (privacy-compliant operation)
- Remote view into the room only when the alarm is triggered (verification)

Well being of the patient



- Quick help in case of incidents
- More quiet: Patients/residents are not disturbed by rounds.

High efficiency



- Easy installation and commissioning without additional servers (decentralized MOBOTIX concept)
- No further license costs
- Integration with Nurse Call Systems via API interface, IP notification, MQTT or MxMessage System
- Integration in MOBOTIX Live App, VMS, Cloud

The perfect solution for support and relief in demanding 24/7 care:

- Monitor patient well-being with an optical sensor solution that automatically detects falls or unwanted bed abandonment in real time and sends direct alerts in case of alarm
- Additional intercom via integrated High Quality Audio function
- Hemispherical optical sensor with 360° all-round view: often only one sensor per patient/resident room required
- The AI-supported software integrated in the c71 detects incidents based on live images without having to store, display or first send them to a central server (no "tapping" of sensitive video data possible)
- High-quality hardware and software designed to be extremely durable and maintenance-free
- More reliable and efficient than conventional fall sensors (e.g. radar or touch sensors), which also do not allow a control view into the room from a distance in case of alarm

2. MOBOTIX c71 NurseAssist – powered by Kepler Vision Technologies



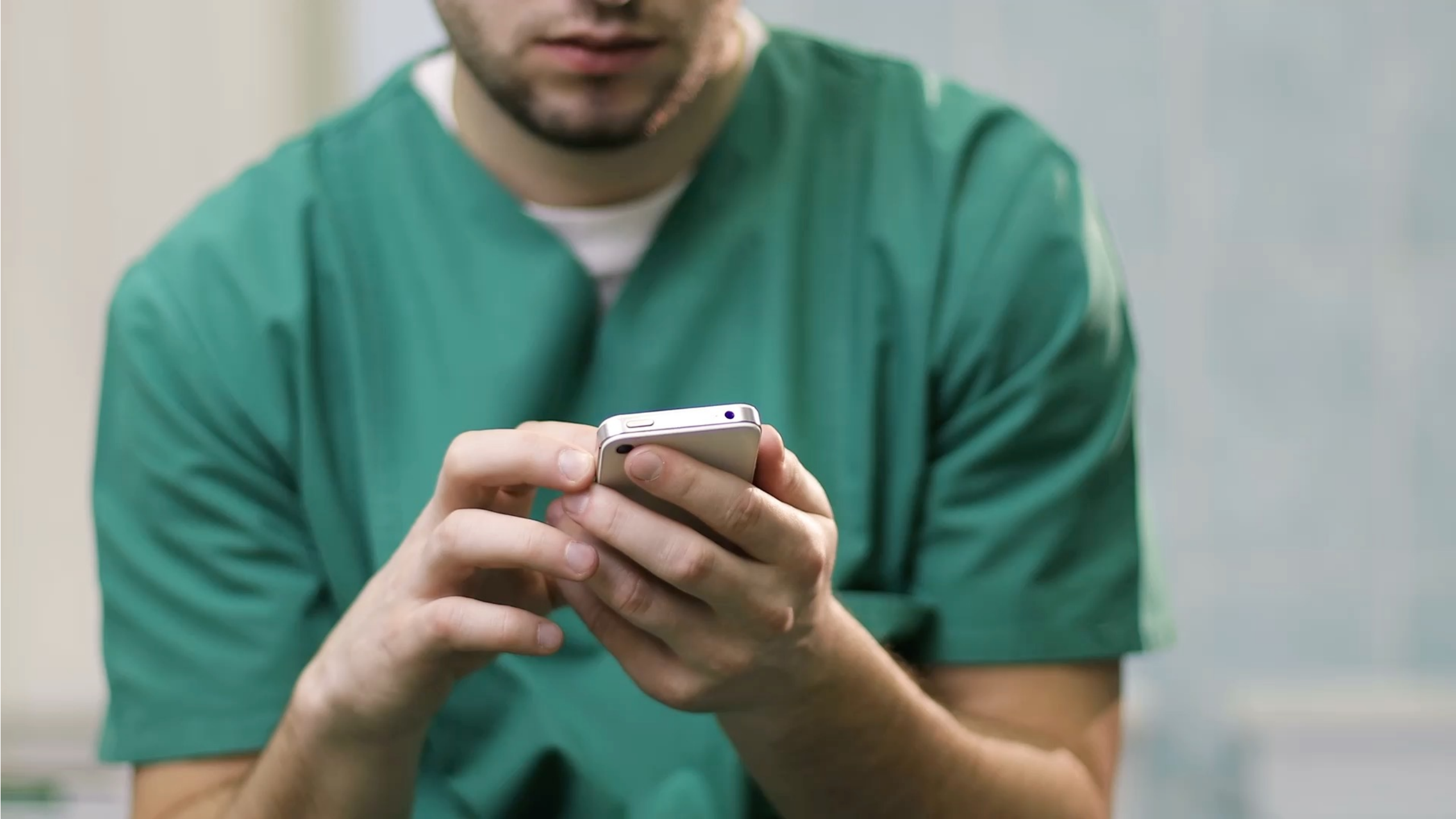
Why MOBOTIX c71 NurseAssist?

- Falls that are not detected in time pose a major health risk to the elderly. In 6 out of 7 falls, someone is only on the scene after 5 minutes in systems with manual alarm buttons or radar-based sensors, and caregivers are inundated with false alarms.
- Radar-based systems are unable to distinguish objects such as a fluttering curtain or a dropped bedspread from falls. The AI-based intelligence of the MOBOTIX c71 NurseAssist solution prevents 99% of these false alarms
- The fall prevention and detection system from the MOBOTIX c71 NurseAssist works with a 360° optical hemispherical sensor.
- The system sends a message within 30 seconds of a fall, and also prevents accidents by detecting and reporting as soon as the patient leaves the bed.

"MOBOTIX solutions for healthcare put people first. MOBOTIX promotes recovery and well-being with its video technology. This has made MOBOTIX a market leader in healthcare sensors," says Harro Stokman, CEO of Kepler Vision Technologies (pictured right). "This convinced us to cooperate, because in order to be economically successful in healthcare, people have to benefit. That is the sick person and the person being cared for, but also the caregivers, who urgently need relief. Last but not least, the facility must benefit from the solution - in terms of personnel, finances and time," explains Stokman.

"With Kepler Vision Technologies, we have found a partner who shares our values in the sensitive area of healthcare," added Christian Cabirol, CTO of MOBOTIX AG. "We were once again able to convince ourselves that our joint solution - the combination of Kepler's AI expertise in the care sector and our data- and cyber-secure, quality- and technology-leading hardware and software - will be a tremendous asset to the nursing and care market," Cabirol is convinced.





2. MOBOTIX c71 NurseAssist – powered by Kepler Vision Technologies

Technical information about the MOBOTIX c71 NurseAssist solution

Functions of the NurseAssist software	<ul style="list-style-type: none"> • Monitoring patient well-being in private rooms, hallways, and common areas of healthcare facilities • Minimization of response times through decentralized state of the art fall detection • Accident prevention through the events person on the floor, person in bed and person out of bed. • Easy installation (only in ceiling mount) • GDPR-compliant operation through event-driven blackout of live and recorded images
Image formats, frame rates, image storage	<ul style="list-style-type: none"> • Video codecs: MxPEG+, H.265, H.265, MJPEG • Max. Image resolution: 4K (1:1) effective max. resolution 2144x2144 hemispherical image • Max. Frame rate (fps): Typ. 12 fps with NurseAssist software activated • Easy installation • GDPR-compliant operation through event-driven blackout of live and recorded images
ONVIF compatibility	<ul style="list-style-type: none"> • Profile G,S, T
More video analysis tools (pre-installed)	Video Motion, MxActivitySensor, MxAnalytics (heat maps, people counting)
Integration with external nurse call systems (remote alarm notification)	Via software API, e-mail, MQTT, MxMessageSystem (for integration in IQ Messenger), Network message (HTTP/HTTPS), SNMP, XML
Integration with video management software (VMS)	<ul style="list-style-type: none"> • MOBOTIX HUB: Supported, Analytics Events & MOBOTIX Event Search Plug-In: Min. HUB License Level 2 • MxMangementCenter: Min. version 2.7.x, Advanced Config license required for camera configuration, Event Search: Smart Data license included • MOBOTIX CLOUD: Streaming and events supported • MOBOTIX Live App: streaming and events supported • 3rd party VMS: see specification of ONVIF profiles S, T and G

2. MOBOTIX c71 NurseAssist – powered by Kepler Vision Technologies

Technical data of the hardware (MOBOTIX c71)	
Image sensor	4K (1:1) effective max. resolution 2144x2144
Light sensitivity	Day mode (color): 0.1 lx @ 1/60 s; 0.005 lx @ 1 s Night mode (B/W): 0.02 lx @ 1/60 s; 0.001 lx @ 1 s
IP protection class	IP40
Operating temperature range	-10 to 50 °C / -14 to 122 °F
Internal DVR, ready to use	MicroSD card (8 GB), MxPEG+ recording only
Microphone / Loudspeaker	Yes
Shock detector (tamper detection)	Yes
Integrated IR illumination (LED)	Yes
Power consumption	Average power consumption: 12.2 W; Max. Power consumption: 25 W
Electrical overvoltage protection	Available with MX overvoltage protection box (not included)
PoE standard	PoE Plus (802.3at-2009)/class 4 (class 3 can be enabled via HW switch. Note: IR lighting requires class 4).
Interfaces	Ethernet 1000BaseT (RJ45 according to EIA/TIA-568B) USB-C/USB2.0; high speed (Vout = 5.1 V, Iout = 0.9 A, Pout = 4.5 W)
Mounting options	Ceiling mount
Dimensions (Ø x height)	164 x 47.5 mm
Gross weight	1.040 g
Housing	Aluminum, PBT-GF30
Certificates	EN 50121-4, EN 55032, EN 55035, EN 61000-6-1, EN 61000-6-2, EN 61000-6-3, EN 61000-6-4, EN 62368-1, EN 63000, AS/NZS CISPR32, 47 CFR Part 15b
Protocols	DHCP (client and server), DNS, ICMP, IGMP v3, IPv4, IPv6, HTTP, HTTPS, FTP, FTPS, MQTT, NFS, NTP (client and server), RTP, RTCP, RTSP, SFTP, SIP (client and server), SMB/CIFS, SNMP, SMTP, SSL/TLS 1.3, TCP, UDP, VLAN, VPN, XML, Zero conf/mDNS
Manufacturer warranty	5 years

2. MOBOTIX c71 NurseAssist – Ordering Information

Ordering information		
Model name Order number	Description	MSRP Price*
c71 indoor camera 4k, DN016 (day/night) NurseAssist Mx-c71A-NurseAssist	MOBOTIX c71 NurseAssist powered by Kepler Vision Technologies with the following functions: - Monitoring the well-being of patients in private rooms, corridors and common areas of healthcare facilities - Minimizing response times through decentralized fall detection - Preventing accidents through the events: person on the floor, person in bed and person out of bed - Simple and discreet installation - DSGVO-compliant operation through event-driven masking of live and recorded images.	Price on demand

*MOBOTIX MSRP prices are recommended net sales prices Ex Works (EXW), ex works in Germany. In some countries, MOBOTIX distributors have to apply locally higher sales prices due to import regulations/duties
Currently not available for USA, Canada & Latam.

3.

MOBOTIX MOVE VANDAL MULTISENSOR PTZ COMBO 20+2MP

3. MOBOTIX MOVE Vandal Multisensor PTZ Combo 20+2MP (Mx-VMSD1A-2021-VA)

360° all-round view + PTZ in one camera.

Experience the best overview combined with remarkable mobility outdoors or indoors. Everything compactly accommodated in the smallest space!

The four 5MP sensors of the MOBOTIX MOVE Combo camera enable seamless 360-degree surveillance. With the additional 2MP high-speed PTZ camera for panning, tilting and 21x zooming, you can also capture all details. A network cable is all that is needed for connection, and only two camera licenses are required for integration in ONVIF VMS systems (1x multisensor, 1x PTZ, each with its own IP address).

The pre-installed, **AI-supported motion and object detection** AI-VMD (people, vehicles) on the multisensor and PTZ unit enables a seamless handover of an event from sensor to sensor. Thanks to auto-tracking, the PTZ camera keeps a constant eye on the relevant object and captures any activity reliably and automatically. Of course, as the operator, you can also pan and zoom to a desired position yourself to get a closer look.

The pre-installed **AI-powered video analytics** (intrusion, wrong direction, crossing lines, loitering) work license-free on all four directional sensors simultaneously, enabling reliable video surveillance 24/7.



The perfect all-in-one video solution for larger surveillance areas:

- Smart City
- Parking and waiting areas, foyers
- Public areas
- Airports, train stations, ports
- Industrial plants
- Sales and storage areas
- Sports stadiums and halls

The main advantages:

- Multidirectional 4x 5MP (fixed)
- PTZ: 2MP Optical Zoom (x21)
- No manual calibration of multisensor and PTZ unit required
- AI Auto Tracking, AI Video Analysis; **MxMessageSystem**
- HighSpeed Pan/Tilt with up to 500°/s
- Integrated IT security TPM chipset (certified to FIPS 140-2 Level 3)
- NDAA compliant
- IP66, IP67, IK10, NEMA 4X
- Durable, beltless PTZ motor
- 5 years warranty



3. MOBOTIX MOVE Vandal Multisensor PTZ Combo 20+2MP (Mx-VMSD1A-2021-VA)



Multisensor (4x 5MP)

Max. Resolution per sensor	3072 x 1728 [16:9] 3072 x 2304 [4:3]
Max. Frame rate	15 fps
Zoom	1x
Angle of view per sensor	[H] 97° x [V] 52°
Dynamic Range	108 dB
Min. ambient brightness	0.12 lx
Focal length	3.2 mm

PTZ (2MP, 21x zoom)

Max. Resolution	1920 x 1080 [16:9] 2048 x 1536 [4:3]
Max. Frame rate	60 fps
Zoom	21x
Angle of view	[H] Wide: 77° / Tele: 3.7° [V] Wide: 44° / Tele: 2.2°
Dynamic Range	144 dB
Min. ambient brightness	0.011 lx
Focal length	4.0-84.6 mm

Housing	Aluminum
Power	IEEE802.3bt, Type 3, class 6 DC 12V, AC 24V
Connections	RJ45, USB-C, 2xAlarm in, 2x Alarm out, DC/AC, Audio in, Audio out, 2x SD-Card Slot

3. MOBOTIX MOVE Vandal Multisensor PTZ Combo 20+2MP (Mx-VMSD1A-2021-VA)

The four **inconspicuously integrated multi-sensor modules**, each with 5MP resolution, have a 40° tilt angle ex works. The modules can be manually adjusted in three positions during installation to ensure such an optimal adjustment to the surveillance area at different distances.

The dome-protected **2MP motorized PTZ unit** with 21x zoom offers pan/tilt speeds of up to 500 degrees per second! In addition to manual operation, the camera offers AI-based automatic PTZ control for real-time object tracking.



3. MOBOTIX MOVE Vandal Multisensor PTZ Combo 20+2MP (Mx-VMSD1A-2021-VA)



3. MOBOTIX MOVE Vandal Multisensor PTZ Combo 20+2MP – Manual PTZ Control

User-friendly manual PTZ control:

The camera was installed at a height of 6 m. On the left the images of the four individual image sensors (Cam1-4), on the right the image of the PTZ unit. By simply drawing a section of the image (yellow frame in Cam2), the PTZ unit is directed directly to this target.



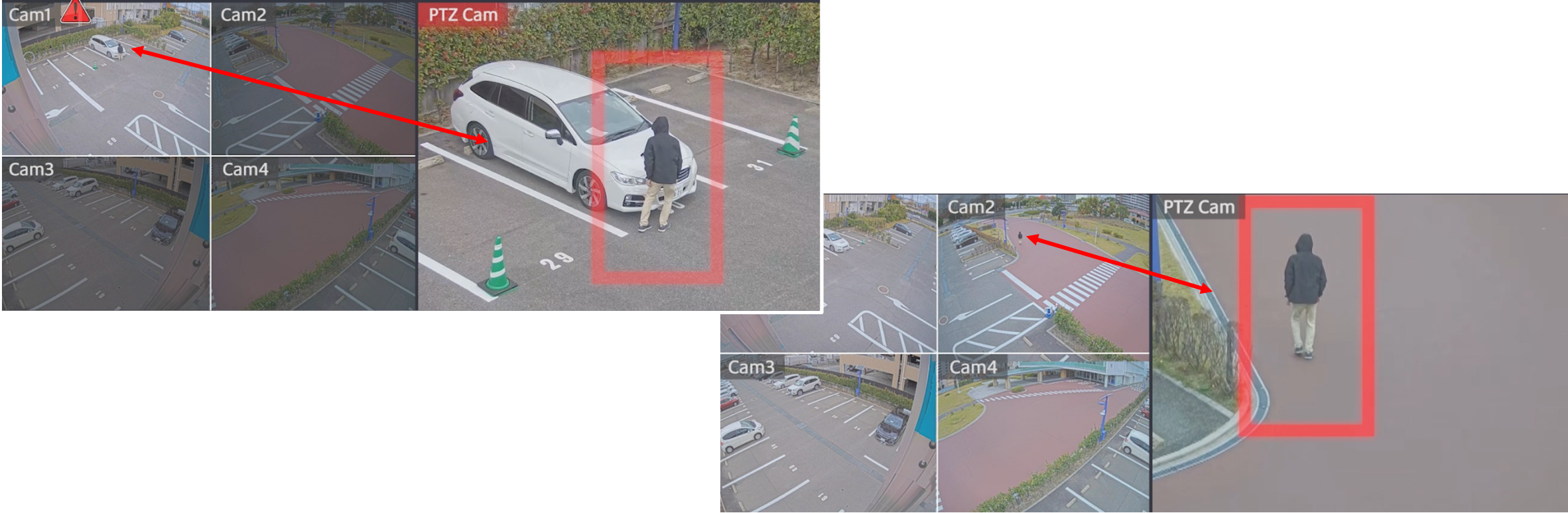
3. MOBOTIX MOVE Vandal Multisensor PTZ Combo 20+2MP – Manual PTZ Control



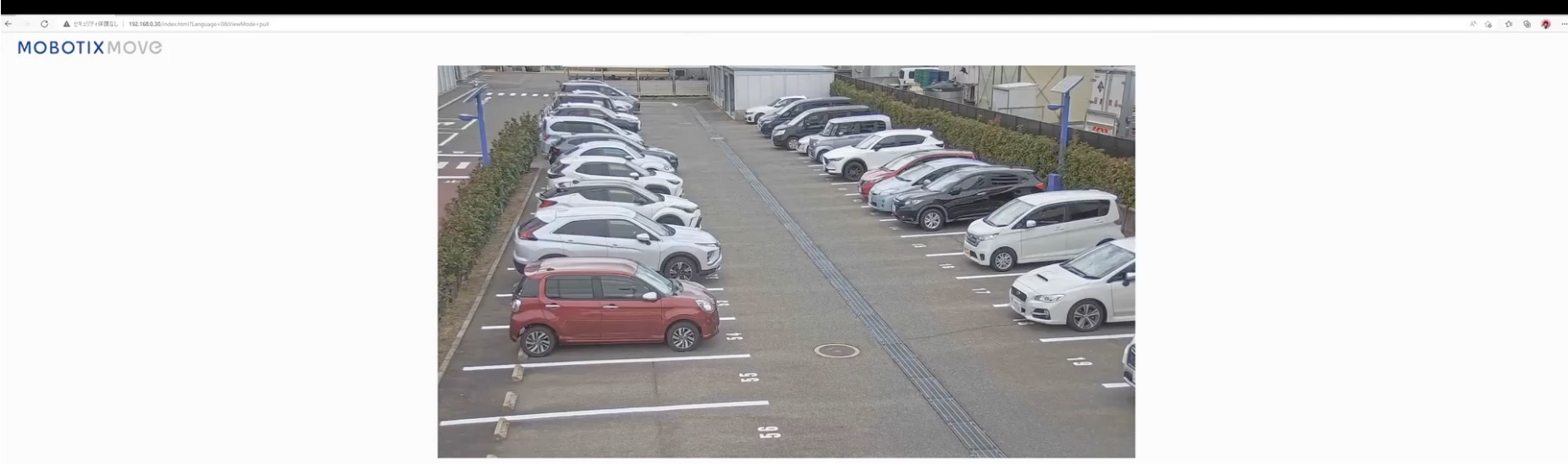
3. MOBOTIX MOVE Vandal Multisensor PTZ Combo 20+2MP – Auto Tracking

Auto-tracking of objects/persons in case of motion alarms:

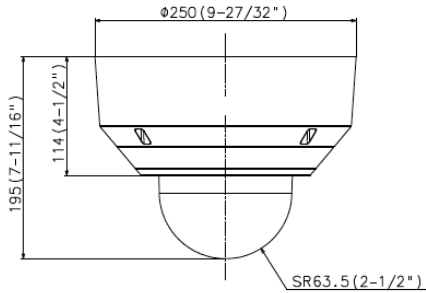
After a motion alarm is triggered for the first time via the multisensor in the Cam1 area by the person in front of the car - detected with AI-based video analysis for object detection (people and/or vehicles) - the tracking and recording of the person automatically starts with the automatically controlled PTZ unit in the entire 360° coverage area of the camera.



3. MOBOTIX MOVE Vandal Multisensor PTZ Combo 20+2MP - Auto Tracking



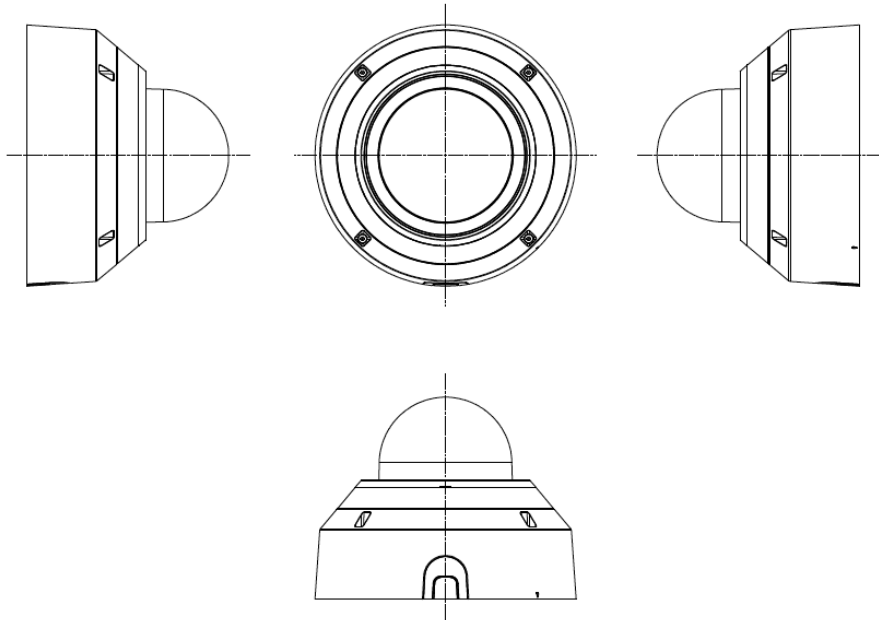
3. MOBOTIX MOVE Vandal Multisensor PTZ Combo 20+2MP – Accessories



The camera is compatible with all **accessory mounts** of the MOBOTIX MOVE SpeedDome camera series ([see online catalog](#)). Only the new Mx-M-VMSD-AP adapter mounting plate is required. Alternatively, the camera can be mounted using the Mx-M-VMSD-IC **ceiling installation kit** (see figure below).

The **power supply** is provided, for example, by the PoE++ injector 60W with **IEEE 802.3bt standard** available from MOBOTIX (Mx-NPA-PoE1A-60W-BT, also requires a standard C14 IEC plug for operation).

VMS integration: The MOVE NVR devices that can be used for the previous MOBOTIX MOVE camera series are not compatible with this camera. However, integration into MOBOTIX HUB, CLOUD or even MxManagementCenter is possible. The camera complies with the **ONVIF profiles G/M/S/T**.



Mx-M-VMSD-AP



Mx-M-VMSD-IC



SpeedDome Mounts



Mx-NPA-PoE1A-60W-BT

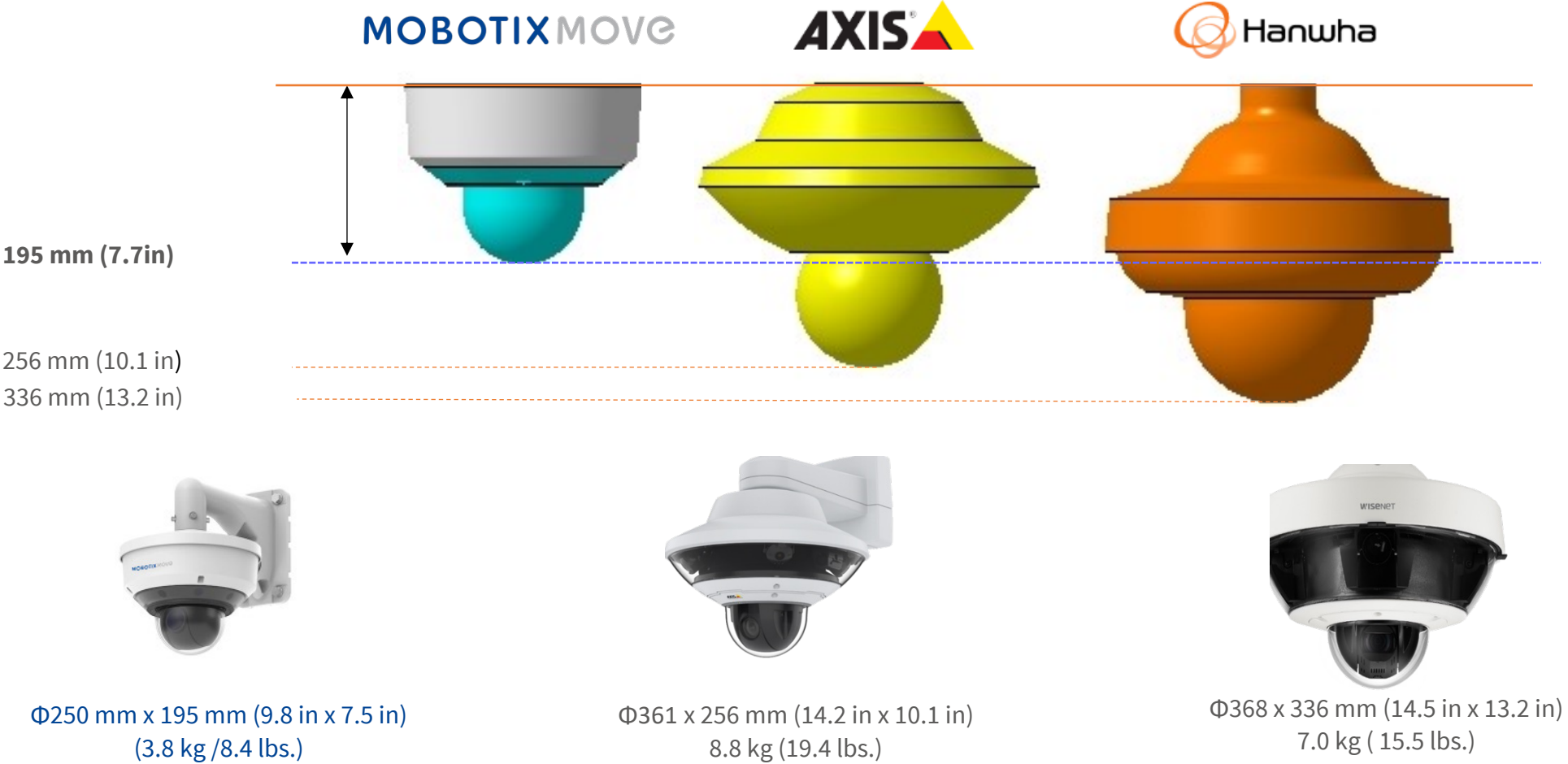
3. MOBOTIX MOVE Vandal Multisensor PTZ Combo 20+2MP – Ordering Information

Ordering information camera		
Model name Order number	Description	MSRP Price*
MOBOTIX MOVE Vandal Multisensor PTZ Combo Mx-VMSD1A-2021-VA	MOBOTIX MOVE Vandalism Multisensor PTZ Combo Network Camera Mx-VMSD1A-2021-VA - Image sensor Multi: 4x5MP (2560x1920), 1/2.7" Progressive CMOS - Image sensor PTZ: 2MP (1920x1080), 1/2.8" Progressive CMOS - ONVIF S/G/T/M - Pre-installed AI-VMD DNN based video motion detection - Automatic object tracking with PTZ unit - Automatic switching from color to B/W image (mechanical IR cut filter) - FIPS140-2 Level 3 certified IT security TPM chipset - Intelligent encoding "Smart Low Bitrate Control" - Multisensor: 4x fixed focal length lens 3.2mm (Viewing Angle HxV: 97 °x 71 °) - PTZ: 21x Motorized Zoom/Focus Lens 4.0mm - 84.6mm with Autofocus and P-Iris (Viewing Angle HxV: 3. 7° - 77° x 2.2° -44°) - IK10 / IP66/ IP67 - NDAA Compliant - NEMA-4x Compliant - Ambient Temperature -40 to 55°C (-4° to 131°F), Humidity 10 to 100% - Video Codecs: H.264, H.265, MJPEG - Wide Dynamic Range up to 108dB for multisensor / 144 dB for PTZ unit - 1 Micro SD/SDHC/SDXC Card support each up to 512 GB (multisensor/ PTZ) - Max. Frame rate multisensor: 5MP@15 fps H.264, MJPEG: 1080p @ 15 fps Max. Frame rate PTZ: 2MP@60 fps H.264, MJPEG: 1080p @ 60 fps - Power supply: PoE++ IEEE802.3bt, max. 35.6 W, DC54V max. 35.6 W - Audio Line In/Out - MTBF: 95000h - Warranty: 5 yrs.	Price on demand
Ceiling installation set Mx-M-VMSD-IC	VMSD Ceiling Mount Kit suitable for the MOBOTIX MOVE Vandal Multisensor PTZ Combo Camera Mx-VMSD1A-2021-VA	Price on demand
Adapter mounting plate Mx-M-VMSD-AP	VMSD Adapter Mounting Plate suitable for the MOBOTIX MOVE Vandal Multisensor PTZ Combo Camera Mx-VMSD1A-2021-VA	Price on demand
PoE++ Power Injector 60W Mx-NPA-PoE1A-60W-BT	PoE++ 60W Network Power Injector - AC input voltage: 100 to 240 VAC (50 to 60Hz) - AC input current: 1.5A @100-240 VAC - Operating ambient temperature: -10° to 40°C @60W, -10° to 50°C, humidity 10 to 90% @30W - IEEE 802.3bt standard - Output power of 60W over 4 pairs - Supports 10/100/1000Base-T applications - Plug-and-play installation - Full protection OVP, OCP - Standard C14 IEC plug not included.	Price on demand

*MOBOTIX MSRP prices are recommended net sales prices Ex Works (EXW), ex works in Germany. In some countries, MOBOTIX distributors have to apply locally higher sales prices due to import regulations/duties.

Competitor Comparison

3. MOBOTIX MOVE Mx-VMSD1A-2021-VA - Significantly more compact than the Competition



3. MOBOTIX MOVE Mx-VMSD1A-2021-VA - Significantly more compact than the Competition

MOBOTIX MOVE



3. MOBOTIX MOVE Mx-VMSD1A-2021-VA - Video Analysis Functions



		Mx-VMSD1A-2021-VA	Q6010-E + Q6075-E	Indoor M-5000-G	PNM-9322VQP+SLA-5M3700P
		MOBOTIX MOVE	AXIS COMMUNICATIONS	AXIS COMMUNICATIONS	Hanwha
AI processor		YES	N/A	N/A	N/A
AI auto tracking		Camera function	Non-AI	N/A	Non-AI
AI-VMD	Intruder	Pre-installed	Non-AI	Non-AI	Non-AI
	Direction	Pre-installed	Non-AI	Non-AI	Non-AI
	Cross Line	Pre-installed	Non-AI	Non-AI	Non-AI
	Loitering	Pre-installed	Non-AI	Non-AI	Non-AI
AI People Detection		Pre-installed	N/A	N/A	N/A
AI Vehicle Detection		Pre-installed	N/A	N/A	N/A
Sound Detection		Camera function	Camera function	Camera function	N/A

3. MOBOTIX MOVE Mx-VMSD1A-2021-VA – Durability (Return on Investment)

-40 °F to +140 °F

IP67 and IP66, IK10

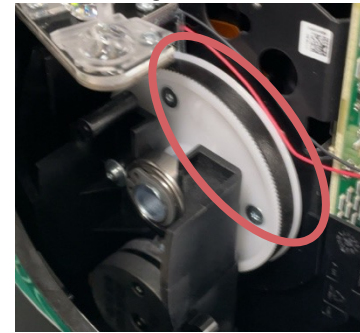
5 years warranty

5 years maintenance-free (corresponds to 3.7 million P&T movements)

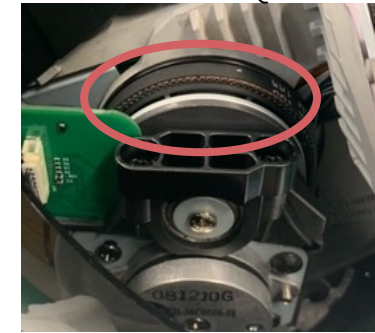
MOBOTIXMOVE
Mx-VMSD1A-2021-VA



AXIS®
Q6135-LE



Hanwha
PNM-9322VQP






	Gear structure	Belt structure	Belt structure
Product life	Long	Short (annual replacement recommended)	Short (annual replacement recommended)
Engineering design complexity	High	Low	Low

3. MOBOTIX MOVE Mx-VMSD1A-2021-VA - Competitor Comparison

	 MOBOTIX MOVE Mx-VMSD1A-2021-VA	 AXIS M5000-G
PTZ	21x	10x
PTZ focal length	4.0-84.6 mm	4.7-47 mm
Coverage	FOV: H: 77.0 - 3.7 degrees / V: 44.0 - 2.2 degrees	FOV: H: 61.8 - 6.7 degrees / V: 36.3 - 3.8 degrees
Dimensions	ø 250mm (9.8") x H195mm (7.5") 3.8 kg (8.4 lbs.)	ø 247 mm (9.7") x 138 mm (5.4") 1.95 kg (4.3 lbs.)
Video analysis	Reliable AI-based video analysis	Not AI-based, limited anylse functions
Further	IP66/67, IK10 vandalism protection Intergated holder	IP51, no vandalism protection No integrated holder

3. MOBOTIX MOVE Mx-VMSD1A-2021-VA - Competitor Comparison

	 MOBOTIX MOVE Mx-VMSD1A-2021-VA	 HIKVISION DS-2DP Series	 dahua TECHNOLOGY DH-PSDW81642
Edge AI Application	Multidirectional: 4 PTZ: 2	No	No
Cyber Security	Certified according to FIPS 140-2 Level 3 GlobalSign certificate Brute force delay protection	n.a.	n.a.
Dimensions & Weight	Φ250mm x 195mm 3,8 kg	Φ433.5 mm x 430.4 mm 18,0 kg	Φ383mm x 462mm 14,4 kg
Installation	No brackets need to be attached Simply connecting the LAN cable is enough	Wall bracket must be installed 8 cables must be connected separately	Installation of a wall bracket is always necessary
Calibration	Automatic calibration	Automatic and manual calibration (manual calibration is recommended for certain scenarios).	Manual calibration

4.

MOBOTIX CLOUD UPDATES

4. MOBOTIX CLOUD Updates: New Editions



MOBOTIX CLOUD VMS Networks Standard, Professional and Enterprise Editions

Advanced features for large enterprises and corporations

MOBOTIX has developed additional features for CLOUD that benefit businesses with multiple locations, many cameras, a large number of users, regulatory requirements and complex needs. For new or existing MOBOTIX CLOUD subscriptions, choose from **three editions to** tailor the MOBOTIX Cloud VMS to your organization's size and surveillance requirements. All existing subscriptions correspond to the Standard Edition. An update of the Standard Edition to Professional or Enterprise Edition is independent of the number of cameras used and can be booked for 1 month, 1 year, 3 years or 5 years.

Standard Edition

The Standard Edition is the basic version and includes all core features of the MOBOTIX CLOUD VMS - including Smart Video Search and the full spectrum of AI-based video analytics to improve security and business operations. The Standard Edition meets the needs of most organizations that value cost-effective remote access to the cloud.

Professional Edition

Designed for mid-sized (10 to 25+ sites) and fast-growing business operations. Professional includes additional features to better manage a large number of sites, users and cameras.

Enterprise Edition

Ideal for large, locally distributed, and multinational enterprises. Enterprise supports an unlimited number of users and provides a sophisticated access management solution and advanced operational reporting to meet audits and regulatory requirements.

4. MOBOTIX CLOUD Updates: New Editions - Performance Overview

Single sign-on

Streamline access management across multiple applications and websites. Use secure credentials for all system access.

Locations/Floor Plans

Manage camera groups by location or display them on a floor plan.

Audit Log

Review and track user activity. Ensure compliance and proper use of the system. Proactively prevent unwanted changes with audit log notifications.

Smart layouts

Artificial intelligence places cameras with detected motion at the top of the dashboard layout, making live activity immediately visible.

Command Line Interface (CLI)

Easily create scripted commands to automate scaled or system-wide functions, including system changes, downloads, and troubleshooting.

For more information, please visit the MOBOTIX Community:

<https://community.mobotix.com>

	Standard	Professional	Enterprise
Cameras per account	Unlimited	Unlimited	Unlimited
Users per account	100	1,000	Unlimited
Cloud archive	10 GB fixed	5 GB per Bridge	10 GB per Bridge
Web client	✓	✓	✓
Mobile client	✓	✓	✓
Smart Video Search	✓	✓	✓
Unlimited third-party integrations using API Platform	✓	✓	✓
Supports all artificial intelligence (AI) and video analytics	✓	✓	✓
2-Way Audio	✓	✓	✓
Multi-factor authentication	✓	✓	✓
Single sign-on		✓	✓
Locations ¹		✓	✓
Floor Plans ¹ (NEW)		✓	✓
Smart Alarms (*coming soon)		✓	✓
Smart Layouts (NEW)		✓	✓
Audit Log ¹		✓	✓
Audit Log Notifications			✓
Command Line Interface (CLI)			✓
Reports (*coming soon)			✓
Customized online training			✓
Periodic system health review		Annual	Quarterly

4. MOBOTIX CLOUD Updates: New Editions – Ordering Information

Ordering information		
Model name Order number	Description	MSRP Price*
MOBOTIX Cloud Monthly Subscription, Update to Professional Edition Mx-CL-Sub-ED001-1	Monthly subscription to use the functions in the Professional Edition of the account in the MOBOTIX CLOUD - Independent of the number of cameras - Free use of the MOBOTIX CLOUD app for desktop PC and mobile devices (Android and iOS) - Access portal: https://mobotixcloud.com - Cancellation/adjustment of the subscription possible at any time at the end of the month	Price on demand
MOBOTIX CLOUD Annual Subscription, Update to Professional Edition Mx-CL-Sub-ED001-12	Annual subscription to use the functions in the Professional Edition of the account in the MOBOTIX CLOUD	Price on demand
MOBOTIX Cloud 3-year subscription, update to Professional Edition Mx-CL-Sub-ED001-36	3-year subscription to use the functions in the Professional Edition of the account in the MOBOTIX CLOUD	Price on demand
MOBOTIX Cloud 5-year subscription, update to Professional Edition Mx-CL-Sub-ED001-60	5-year subscription to use the functions in the Professional Edition of the account in the MOBOTIX CLOUD	Price on demand
MOBOTIX Cloud Monthly Subscription, Update to Enterprise Edition Mx-CL-Sub-ED002-1	Monthly subscription to use the functions in the Enterprise Edition of the account in the MOBOTIX CLOUD - Independent of the number of cameras - Free use of the MOBOTIX CLOUD app for desktop PC and mobile devices (Android and iOS) - Access portal: https://mobotixcloud.com - Cancellation/adjustment of the subscription possible at any time at the end of the month	Price on demand
MOBOTIX CLOUD Annual Subscription, Update to Enterprise Edition Mx-CL-Sub-ED002-12	Annual subscription to use the functions in the Enterprise Edition of the account in the MOBOTIX CLOUD	Price on demand
MOBOTIX Cloud 3-year subscription, update to Enterprise Edition Mx-CL-Sub-ED002-36	3-year subscription to use the functions in the Enterprise Edition of the account in the MOBOTIX CLOUD	Price on demand
MOBOTIX Cloud 5-year subscription, update to Enterprise Edition Mx-CL-Sub-ED002-60	5-year subscription to use the functions in the Enterprise Edition of the account in the MOBOTIX CLOUD	Price on demand

*MOBOTIX MSRP prices are recommended net sales prices Ex Works (EXW), ex works in Germany. In some countries, MOBOTIX distributors have to apply locally higher sales prices due to import regulations/duties.

4. MOBOTIX CLOUD Updates: I/O Support for MOBOTIX MOVE Cameras

Support of camera connections in the MOBOTIX CLOUD

(e.g. for barrier opening or integration of alarm systems)

The MOBOTIX CLOUD has an I/O functionality. This is now offered for numerous MOBOTIX MOVE cameras and, from the end of 2023, also for the MOBOTIX IOT cameras. Practical use cases include the combination with alarm systems or external sensors that are directly connected via the camera's switching input and trigger a recording and/or an alarm (visual alarm, email and push message) when triggered in the cloud. The switching output of a MOBOTIX camera can also be used to open a barrier and the barrier can be opened via the MOBOTIX CLOUD VMS using a soft button. For the cameras that support this function, an "I/O TAB" appears in the Cloud Camera Settings where the corresponding settings can be made.

MOVE models whose I/O ports are currently supported in the MOBOTIX CLOUD (the MOBOTIX CLOUD will support the complete product range of MOVE and IoT cameras in the future):

> **MOBOTIX MOVE SpeedDomes** (as of release mb20230426RS)

SD1A-330, SD1A-340, SD1A-831

> **MOBOTIX MOVE Vandal Bullet with Vaxtor ALPR software** (as of release: mb20230420UX_8G)

Mx-VB1A-2-IR-(VAX)-ALPR and Mx-VB1A-2-IR-D-(VAX)-ALPR

> **MOBOTIX MOVE MicroDome** (as of release: mb20230420NX)

Mx-MD1A-5-IR

For more information, please visit the MOBOTIX Community: <https://community.mobotix.com>

BeyondHumanVision



4. MOBOTIX CLOUD Updates: Direct to Cloud



Easy cloud integration of MOBOTIX MOVE cameras without the need for a hardware bridge

MOBOTIX CLOUD offers a new, direct way to connect MOBOTIX MOVE cameras to the cloud faster and easier, even without additional hardware (bridge). Because: In many cloud projects, the cameras are distributed across many sites and the typical number of cameras per site is between 1 to 4 cameras (more cameras possible, depending on the available bandwidth and the risk of data loss incurred due to the lack of a bridge buffer). This is exactly the use case for which Direct to Cloud shows its potential.

Advantages of Direct to Cloud:

- Limit on-site hardware to camera(s) (no bridge required)
- Faster and easier installation
- Lower hardware costs (especially with few cameras per site)
- Use of all MOBOTIX CLOUD subscriptions from HD to 15HD (recording 3 days to 5 years)
- Smart Video Search support

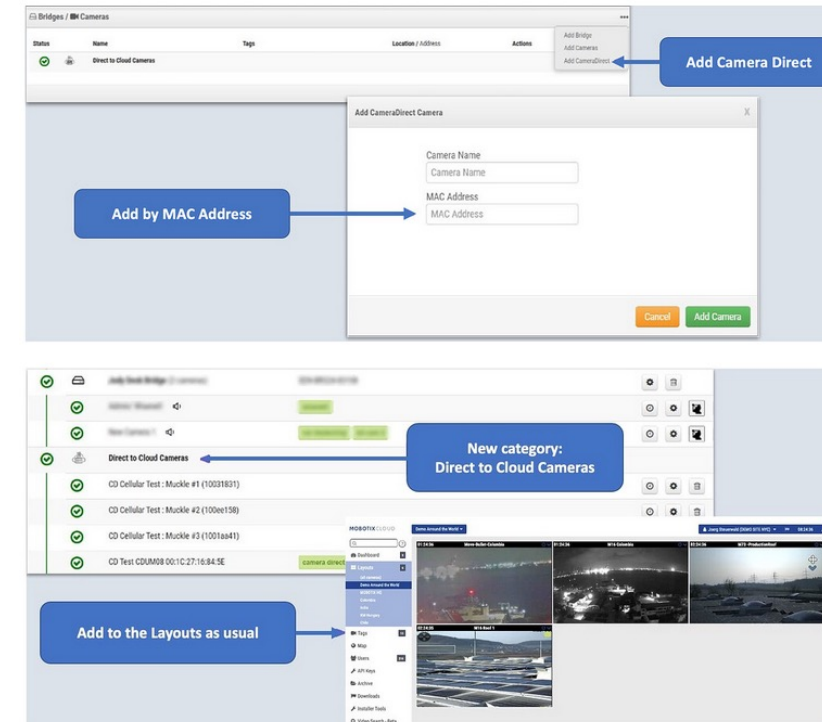
Prerequisites:

- A MOBOTIX CLOUD subscription
- A Direct to Cloud camera (current MOBOTIX MOVE series with corresponding entry in the Release Notes of the firmware used, see [software download page](#))
- An Internet connection on site with sufficient bandwidth
- Use of only a few cameras per site (a bridge can be added at any time if required).

Typical use cases:

Green waste sites, trash collection sites, pump stations, wash boxes, unmanned gas stations with pumps, Mobile radio systems, e-charging stations, etc.

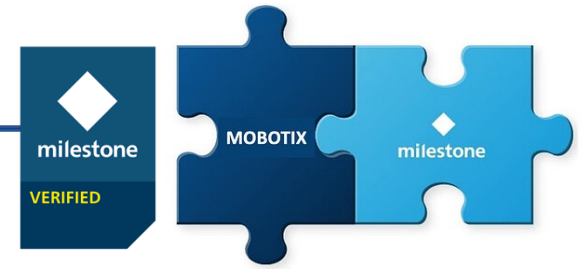
For more information, please visit the MOBOTIX Community: <https://community.mobotix.com>



5.

MILESTONE XPROTECT PLUG-INS

5. Milestone XProtect Plug-Ins



MOBOTIX Plug-Ins as additional licenses for Milestone XProtect

Existing installations with the Milestone XProtect VMS are also able to use MOBOTIX functions previously reserved for HUB customers with new MOBOTIX One-Time-Licenses and thus easily expand their Milestone system with MOBOTIX products (cameras, camera apps, applications such as SYNC and the MOBOTIX Plug Ins). This way, we support Milestone customers who do not yet use MOBOTIX products. Existing and future MOBOTIX HUB customers, however, can continue to use these MOBOTIX Plug-Ins free of charge. MOBOTIX will also become part of the [Milestone Marketplace](#), expanding the global visibility of its innovative solutions.

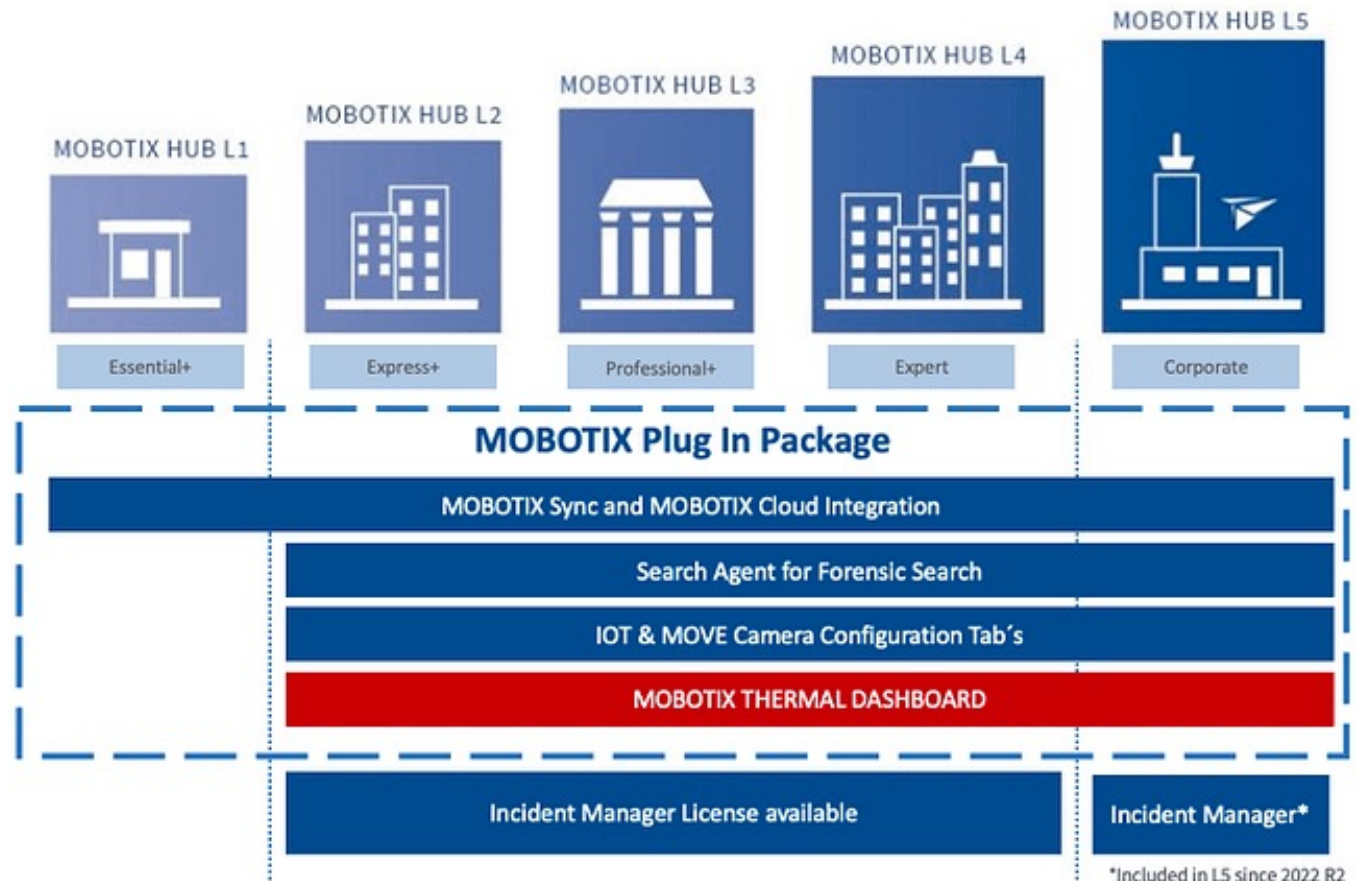
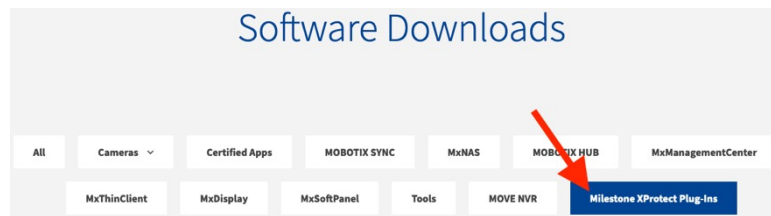
Support of the individual HUB Plug-In features in the Milestone XProtect versions (Essential+ to Corporate)

The Plug-In license keys can be purchased from MOBOTIX or MOBOTIX partners and then activated directly in XProtect.

All licenses are also available as a free 30-day demo.

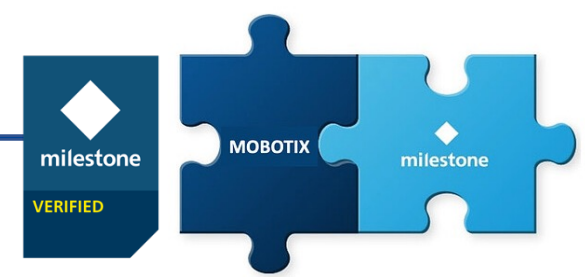
Further information and the release notes for the individual plug-ins can be found in the MOBOTIX Download Center under the new category "Milestone XProtect Plug-Ins":

<https://www.mobotix.com/en/node/19217>



*Included in L5 since 2022 R2

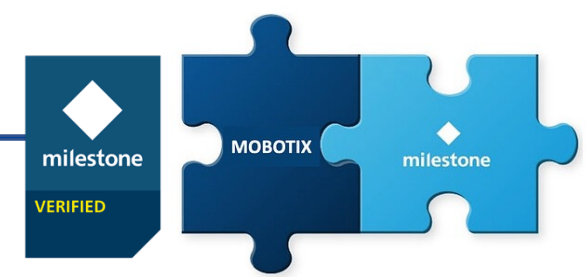
5. Milestone XProtect Plug-Ins – Ordering Information



Ordering information		
Model name Order number	Description	MSRP Price*
MOBOTIX HUB Plug In - ThermalDashboard Base License for Milestone XProtect Mx-SW-XPro-Th-DB-Bas	Activates the MOBOTIX Thermal Dashboard in Milestone XProtect and supports the MOBOTIX Thermal Camera functions - Main applications are - Live monitoring and surveillance of temperature-critical processes - Subsequent analysis of the temperature curve - Supports MOBOTIX Thermal Cameras P3, P6 and P7 - Restriction of P3 to temperature graphs no hot spot areas - License is activated via the MOBOTIX License Portal. - License is not transferable - One license per Milestone XProtect VMS is required. - With one license, thermal graphs from 4 thermal cameras can be included in the layout - Additional thermal cameras require one MOBOTIX Device license per camera - Permanent license	Price on demand
MOBOTIX HUB Plug In - ThermalDashboard Demo License for Milestone XProtect Mx-SW-XPro-Th-DB-Bas-30	Free 30 days demo	0 EUR / 0 USD
MOBOTIX HUB Plug In - MOBOTIX SYNC Base License for Milestone XProtect Mx-SW-XPro-SYNC-DB-Bas	Activates the MOBOTIX SYNC Dashboard in the Milestone XProtect Smart Client - Main applications are - Display of statistical values in diagrams - Display of lists of detected license plates - Access to MOBOTIX HUB via Desk Client Tab - Support for MOBOTIX SYNC and Helix Vaxtor - License is activated via the MOBOTIX License Portal. - License is not transferable - One license per Milestone XProtect VMS is required. - With one license, 4 Grafana Dashboards can be integrated in the layout - Additional Grafana Dashboards require one MOBOTIX Sync Device license per dashboard - Permanent license	Price on demand
MOBOTIX HUB Plug In - MOBOTIX SYNC Demo License for Milestone XProtect Mx-SW-XPro-SYNC-DB-Bas-30	Free 30 days demo	0 EUR / 0 USD

*MOBOTIX MSRP prices are recommended net sales prices Ex Works (EXW), ex works in Germany. In some countries, MOBOTIX distributors have to apply locally higher sales prices due to import regulations/duties.

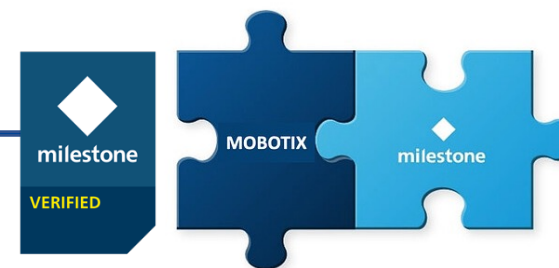
5. Milestone XProtect Plug-Ins – Ordering Information



Ordering information		MSRP Price*
Model name Order number	Description	
MOBOTIX HUB Plug In - MOBOTIX CLOUD Base License for Milestone XProtect Mx-SW-XPro-CLOUD-Bas	Activates the MOBOTIX CLOUD support in Milestone XProtect - Main application features in the Smart Client are - Include cloud cameras in the Smart Client layout - Additionally a separate CLOUD tab in the application - License is activated via the MOBOTIX License Portal. - License is not transferable - One license per Milestone XProtect VMS is required. - 4 cameras are included in the Base license - Additional cameras require a Device license per camera - Permanent license	199 EUR / 229 USD
MOBOTIX HUB Plug In - MOBOTIX CLOUD Demo License for Milestone XProtect Mx-SW-XPro-CLOUD-Bas-30	Free 30 days demo	0 EUR / 0 USD
MOBOTIX HUB Plug In - MOBOTIX Camera Configuration for Milestone XProtect Mx-SW-XPro-Config	Activates the configuration settings for MOBOTIX cameras in Milestone XProtect - Management Client offers camera specific configuration tabs for P3/P6/P7 and MOVE cameras - License is activated via the MOBOTIX License Portal. - License is not transferable - One license per Milestone XProtect VMS is required. - Activates the function for all MOBOTIX cameras registered in the system.	99 EUR / 119 USD
MOBOTIX HUB Plug In - MOBOTIX Camera Demo Configuration for Milestone XProtect Mx-SW-XPro-Config-30	Free 30 days demo	0 EUR / 0 USD

*MOBOTIX MSRP prices are recommended net sales prices Ex Works (EXW), ex works in Germany. In some countries, MOBOTIX distributors have to apply locally higher sales prices due to import regulations/duties.

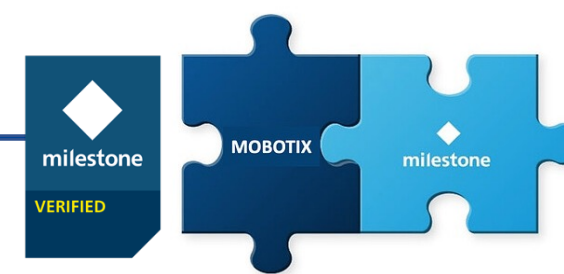
5. Milestone XProtect Plug-Ins – Ordering Information



Ordering information		MSRP Price*
Model name Order number	Description	
MOBOTIX HUB Plug In - ForensicSearch for Milestone XProtect Mx-SW-XPro-ForSe	Activates the MOBOTIX ForensicSearch filters in the Milestone XProtect Smart Client and supports the MOBOTIX event and app meta data for forensic search - Intelligent search filter reduces the search in the playback to the essential - Search filter for camera apps as well as for MOBOTIX events - Support from camera models P6 / P7 and MOVE LPR models - License is activated via the MOBOTIX License Portal. - License is not transferable - One license per Milestone XProtect VMS is required. - Activates the function for all MOBOTIX cameras registered in the system.	Price on demand
MOBOTIX HUB Plug In - ForensicSearch Demo for Milestone XProtect Mx-SW-XPro-ForSe-30	Free 30 days demo	0 EUR / 0 USD
MOBOTIX HUB Plug In - ThermalDashboard Device License for Milestone XProtect Mx-SW-XPro-Th-DB-Dev	Activates another camera for the MOBOTIX Thermal Dashboard in Milestone XProtect - Supports MOBOTIX Thermal Cameras P3, P6 and P7 - Restriction of P3 to temperature graphs no hot spot areas - License is activated via the MOBOTIX License Portal. - License is not transferable - One license per Milestone XProtect VMS is required. - Requires a MOBOTIX Thermal Dashboard Base license - With a MOBOTIX Thermal Dashboard Base license, thermal graphs from 4 thermal cameras can be included in the layout - Additional thermal cameras require a MOBOTIX Device license per camera - Permanent license	Price on demand
MOBOTIX HUB Plug In - ThermalDashboard Demo Device License for Milestone XProtect Mx-SW-XPro-Th-DB-Dev-30	Free 30 days demo	0 EUR / 0 USD

*MOBOTIX MSRP prices are recommended net sales prices Ex Works (EXW), ex works in Germany. In some countries, MOBOTIX distributors have to apply locally higher sales prices due to import regulations/duties.

5. Milestone XProtect Plug-Ins – Ordering Information



Ordering information		
Model name Order number	Description	MSRP Price*
MOBOTIX HUB Plug In - MOBOTIX SYNC Device License for Milestone XProtect Mx-SW-XPro-SYNC-DB-Dev	Activates another MOBOTIX SYNC Grafana Dashboard in the Milestone XProtect Smart Client - License is activated via the MOBOTIX License Portal. - License is not transferable - One license per Milestone XProtect VMS is required. - Requires a MOBOTIX SYNC Base license - With one Base license, 4 Grafana dashboards can be integrated in the layout - Additional Grafana dashboards require one MOBOTIX Sync Device license per dashboard - Permanent license	Price on demand
MOBOTIX HUB Plug In - MOBOTIX SYNC Demo Device License for Milestone XProtect Mx-SW-XPro-SYNC-DB-Dev-30	Free 30 days demo	0 EUR / 0 USD
MOBOTIX HUB Plug In - MOBOTIX CLOUD Device License for Milestone XProtect Mx-SW-XPro-Th-DB-Dev	Activates an additional cloud camera in Milestone XProtect - Main applications in Smart Client are - Integrate cloud cameras in Smart Client layout - License is activated via the MOBOTIX License Portal. - License is not transferable- One license per Milestone XProtect VMS is required. - Requires a MOBOTIX CLOUD Base license - The Base license includes 4 cameras - Additional cameras require a Device license per camera - Permanent license	Price on demand
MOBOTIX HUB Plug In - MOBOTIX CLOUD Demo Device License for Milestone XProtect Mx-SW-XPro-Th-DB-Dev-30	Free 30 days demo	0 EUR / 0 USD

*MOBOTIX MSRP prices are recommended net sales prices Ex Works (EXW), ex works in Germany. In some countries, MOBOTIX distributors have to apply locally higher sales prices due to import regulations/duties.

6.

MOBOTIX NAS Updates

New NAS solution for MxManagementCenter: Easy integration of QNAP NAS with new QVR Pro license

The MOBOTIX NAS has been officially discontinued in 2022, i.e. no new functions will be provided for it (only necessary maintenance updates if required). To enable MxMC playback access to recordings from ONVIF-enabled cameras (e.g. MOVE series), we have developed a new and easy-to-use [QNAP QVR Pro recording software solution](#) in cooperation with **QNAP**, one of the world's most important NAS manufacturers.

QNAP offers with its own NAS devices based on the operating system QTS in combination with the QNAP QVR Pro Recording Software the possibility to record MOVE cameras or ONVIF cameras. This recording can then be played back with the MxManagementCenter.

To activate this software function, a corresponding Mx-SW-MC-QNAP license must be obtained from MOBOTIX or a MOBOTIX partner. The license is then activated directly via the QNAP NAS. The MOBOTIX cameras, the free MxManagementCenter and the necessary licenses for third-party cameras will continue to be purchased from MOBOTIX as usual.

Special benefits for existing MOBOTIX NAS customers:

MOBOTIX customers who already have a MOBOTIX NAS in use can continue to use it and update it in the future with the maintenance versions of the QNAP software. It is also possible to upgrade to the full QNAP QTS / QVR Pro solution including the channel licenses - and thus gain access to many new functions and apps from QNAP! This means that additional channel licenses for further cameras can also be purchased for "old MOBOTIX NAS" if required.

- Full use of the extensive QNAP apps, such as Back Up Recovery, Anti-Virus, Monitoring
- Free updates for the latest QTS/QVR Pro software with full functionality and for the latest security updates
- Use of different QNAP NAS models, customizable for each project
- Recording of MOBOTIX IOT cameras with latest Samba standards for maximum performance and stability

6. MOBOTIX NAS Updates – Ordering Information



Ordering information		
Model name Order number	Description	MSRP Price*
QNAP QVR Pro license for MxMC Playback activation Mx-SW-MC-QNAP	Enables MxMC playback support in QVR Pro recording software on a QNAP NAS with QTS operating system - Supports playback in MxMC of ONVIF cameras such as MOVE camera series - Optimal combination on a QNAP NAS - IoT cameras save to the NAS independently using file sharing (SMB) and record the mounted MOVE or ONVIF cameras in parallel using QVR Pro recording software. Playback is done with the MxMC - License is activated on the QNAP NAS via the QNAP License Manager. - License is not transferable - One license per QNAP NAS with QVR Pro is required - For camera recordings additional camera channel licenses are required by QNAP per channel, these must be obtained from QNAP	Price on demand

*MOBOTIX MSRP prices are recommended net sales prices Ex Works (EXW), ex works in Germany. In some countries, MOBOTIX distributors have to apply locally higher sales prices due to import regulations/duties.

Technical requirements:

- The used QNAP NAS is based on QTS software
- Equipment and performance of the QNAP NAS are suitable for QVR Pro software and the number of connected cameras
- For this purpose, the QNAP NAS selector can be used on the QNAP page (MOBOTIX recommends at least 8 GB RAM) [> LINK](#)
- QVR Pro Software: Release Notes [> LINK](#)
- Offline installation of QVR Pro software if the NAS does not have an Internet connection to the QNAP Store [> LINK](#)
- Activate QNAP licenses [> LINK](#)

For more information, please visit the MOBOTIX Community: <https://community.mobotix.com>

7.

MOBOTIX 7 Firmware and App Updates MOBOTIX MOVE Software Updates

7. MOBOTIX 7 Firmware Update MX-System Release 7.3.2.92



Photo by [ThisisEngineering RAEng](#) on [Unsplash](#)

Firmware for all MOBOTIX 7 camera models M73, S74, Q71, D71, c71, v71, p71

- This version supports the new Certified **MOBOTIX Thermal Validation App for** early fire detection while avoiding false alarms caused by moving hot objects. Details can be found in the release notes for the Certified App package
- Vaxtor Apps with improved LPR algorithm
- Update with general stability and performance improvements and bug fixes

Download direct links:

Firmware: <https://www.mobotix.com/en/node/18866>

Release Notes: https://www.mobotix.com/sites/default/files/2023-10/V7.3.2.92_release-notes_en_v1.html

Certified App Package: <https://www.mobotix.com/en/node/18867>

7. MOBOTIX Thermal Validation App - Now available as full Version!



Reduce false alarms on thermal cameras:

Detection and filtering out of non-critical heat sources

Automated detection of dangerous heat sources can fail because false alarms are triggered too often in everyday situations. MOBOTIX now offers intelligent detection of the corresponding situation with the **Thermal Validation App**.

The following practical examples no longer trigger false alarms:

- **Waste disposal companies:** removal and processing by excavator or caterpillar
- **Logistics and industry:** Delivery traffic, forklifts or vehicles briefly linger in the monitored image area of the camera

Expand the capabilities of your thermal cameras and reliably automate even difficult situations.

THE MOST IMPORTANT:

- Filters out vehicles as a non-critical heat source.
- Reduces false alarms
- Can be run in parallel with other apps.
- Extension of the temperature measurement functions
- The prerequisite is an app-enabled **MOBOTIX camera with Thermal TR module**.

Video link to the app:

https://www.youtube.com/watch?v=ju_k0jd4qaXk



7. MOBOTIX Thermal Validation App - Now available as full Version!

Ordering information		
Model name Order number	Description	MSRP Price*
MOBOTIX Thermal Validation App Mx-APP-MX-TVA	<ul style="list-style-type: none">• App optimizes MOBOTIX Thermal Radiometry cameras for use in the waste management and logistics sectors• Enables filtering of vehicles (e.g. construction equipment and forklifts) as a non-critical source of high temperatures (e.g. by measuring hot body parts such as the exhaust or engine cover)• Extension of the temperature measurement functions of MOBOTIX Thermal Radiometry cameras (CNPP 19005 compliant)• Definition of up to 20 temperature measurement areas within the camera's field of view• Individual calibration of each temperature measurement range (e.g. emissivity)• Temperature events when defined temperature thresholds are exceeded• Detection of physical manipulation of the thermal sensor (e.g. covering the sensor)• MOBOTIX events via MxMessageSystem• Transmission of temperature data and threshold status of measuring ranges via MODBUS/TCP and JSON / XML via HTTP(S)	Price on demand

*MOBOTIX MSRP prices are recommended net sales prices Ex Works (EXW), ex works in Germany. In some countries, MOBOTIX distributors have to apply locally higher sales prices due to import regulations/duties.

7. MOBOTIX MOVE Software Updates

New software versions for MOVE products

MOBOTIX offers up-to-date software versions for the **MOVE cameras**, the **MOVE NVR** devices and the **MOVE CMS**.

The updates, which are available immediately, offer bug fixes as well as numerous stability and function improvements and are available for free download on the MOBOTIX website with detailed descriptions and version notes.

MOBOTIX MOVE Cameras and MOVE NVR- Release Notes & Software Download:

<https://www.mobotix.com/en/software-downloads>



8.

PRODUCT DISCONTINUATIONS (End of Life - EoL)

8. Product Discontinuation of MOBOTIX S26 Camera and Accessories

The **production of** the hemispherical MOBOTIX S26 camera and the AudioMount, which is available as an accessory for this camera, will be discontinued due to components that are no longer available. The products listed here are only available until the **end of December 2023** or while stocks last.

Alternatively, MOBOTIX recommends using the S16 dual variant, which is still available and can also be used with hemispherical image sensors, or switching to the newer MOBOTIX 7 platform (S74, Q71, c71).



Product discontinuations as of 31 December 2023 (EoL)		
Model name Order number	Description	MSRP Price*
S26B camera 6MP, B016 (day) Mx-S26B-6D016	Hemispheric IP camera with 6 megapixel moonlight sensor, SW (night) - ONVIF-compliant Mx6 system platform (2nd generation) with H.264, MxPEG+ and M-JPEG - HD premium fisheye lens B016 (focal length 1.6 mm, f/2.0, 180° x 180°) - Max. Image size: 6MP (3072 x 2048) - IP66/IK07, -30 to 50 °C - Internal DVR: 4 GB microSD - Temperature sensor, MxActivitySensor, MxAnalytics (incl. behavior detection), vibration sensor - Ethernet patch cable 0.5 m/1.6 ft - Interfaces: Ethernet 10/100 (RJ45), MxBus, USB; I/O and RS232 via MX-232-IO-Box (MX-OPT-RS1-EXT)	Price on demand
S26B camera 6MP, B016 (night) Mx-S26B-6N016	Hemispheric IP Camera with 6 Megapixel Moonlight Sensor, SW (Night)	Price on demand
AudioMount S26 MX-FLEX-OPT-AM-BL	Simple, fast and concealed mounting with adhesive foil (e.g. behind stainless steel plate) - Loudspeaker and microphone incl. camera connection cable integrated - Use of camera as door station by connecting an external bell button (e.g. connected via MX-232-IO-Box)	Price on demand

8. Product Discontinuation of older MOBOTIX HUB Releases



Please also refer to the HUB product life cycle:

- The MOBOTIX HUB Release 2020 R2 will be discontinued on November 12, 2023.
- The MOBOTIX HUB Release 2021 R1 will be discontinued on June 29, 2024.
- If necessary, please switch to a newer release (currently: [MOBOTIX HUB 2023 R2](#)).
- HUB updates are available free of charge for all HUB users with Advanced Services software maintenance package!

Not yet a HUB expert?

No problem! You can book customized **HUB trainings** with a technical or sales focus directly via our training calendar: <https://www.mobotix.com/en/support/trainings/trainingcalendar>

9.

IMPORTANT LINKS AND DOWNLOADS

Become Part of the MOBOTIX Community!



MOBOTIX Community



The MOBOTIX Community - support around the clock

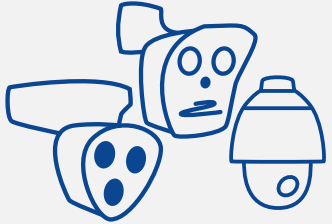
Are you a MOBOTIX partner, customer, user or just technically very interested in our innovative quality products like the smart cameras "Made in Germany", MOBOTIX 7 camera apps with latest AI technology or the modern VMS solutions like MOBOTIX HUB or MOBOTIX CLOUD?

Visit our community platform now! Our technical support experts as well as experienced external users provide tips on how to set up and use MOBOTIX solutions - and troubleshoot if necessary. In addition to numerous valuable technical information and tips, you can of course also exchange ideas with other members of the worldwide MOBOTIX family in the user forum.

Registration and use of the MOBOTIX Community are of course free of charge: <https://community.mobotix.com>

Important Links and Downloads

Products



[Overview of the entire MOBOTIX product range...](#)

Software



[Download software, firmware, apps and driver packages...](#)

Documentation



[Technical documentation, whitepapers, technical drawings and more...](#)

Trainings



[Current dates about webinars, trainings and events...](#)

BeyondHuman**Vision**

MOBOTIX

MOBOTIX AG
Kaiserstrasse
67722 Langmeil
Germany

+49 6302 9816-0
info@robotix.com
www.robotix.com

MOBOTIX, the MOBOTIX Logo, MxControlCenter, MxEasy, MxPEG, MxDisplay and MxActivitySensor are trademarks of MOBOTIX AG registered in the European Union, the U.S.A. and in other countries • Subject to change without notice • MOBOTIX do not assume any liability for technical or editorial errors or omissions contained herein • All rights reserved • © MOBOTIX AG