



VINYL WALLCOVERINGS

This document must not be used for final color selection. Please request a color selector from your local Moderco distributor.



DESERT SAND



Silk 5921-27



Dionis 5521-93



Gray Angora 5721-93



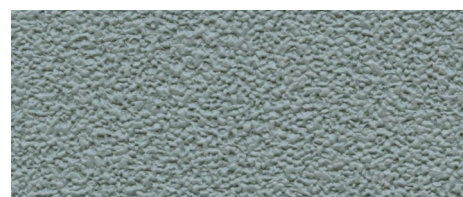
Platinum 5721-96



Washed Denim 5921-79

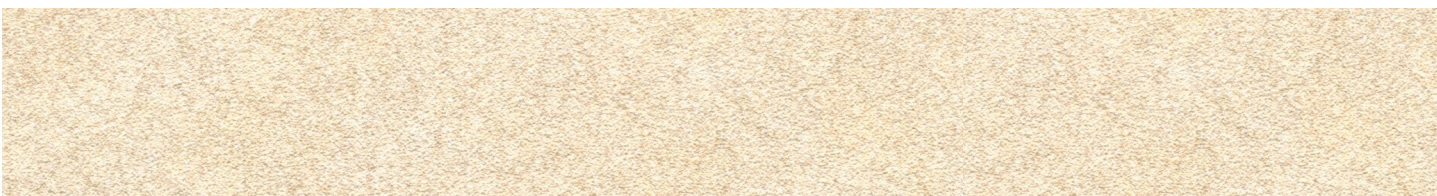


Quarry 5621-19



Silver Spring 5921-96

MATRIX



Ivory Metrix M121-10



Bone M121-24



Diamond Ice M121-77



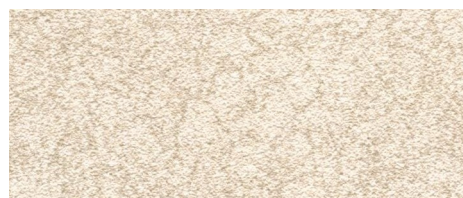
Roman Glass M121-53



Amber Gold M121-21



Soft Amazonite M121-86

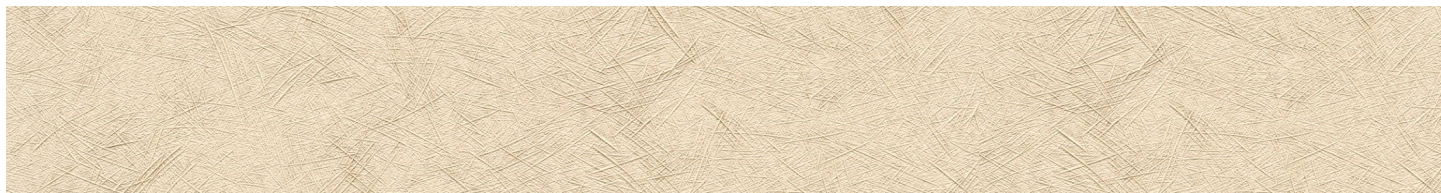


Lapis Nevada M121-19

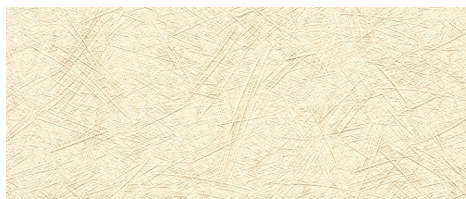
This document must not be used for final color selection. Please request a color selector from your local Moderco distributor.



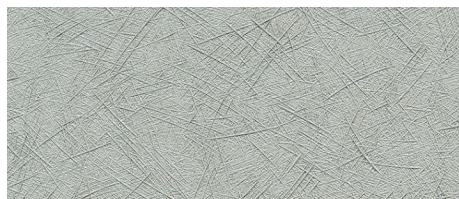
GRASSLAND



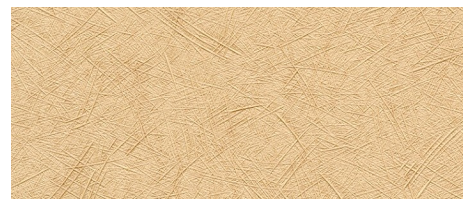
Tree Bark G021-28



Tumbleweed G021-37



Silver Straw G021-98



Bluff G021-32



Savory G021-84



Thunder G021-90



Glacier G021-02

LINDEN



Tatter Sall 4621-31



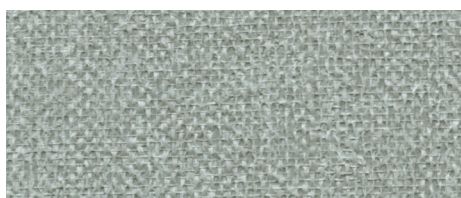
Château 4821-99



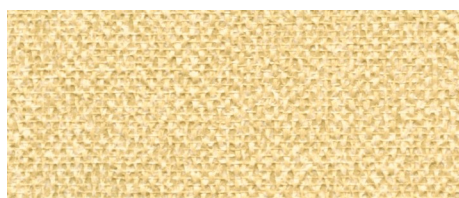
Swansea 4621-23



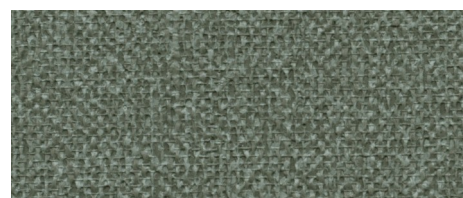
Foggy Day 4621-37



Dover Gray 4821-95



Lemon Drop 4621-05



New Castle 4621-94

This document must not be used for final color selection. Please request a color selector from your local Moderco distributor.



ORLEANS



Beignet R921-01



Damask R921-21



Inscription R921-03



Fine Silver R921-90



Counting Glass R921-78



Ring for the Butler R921-99



Checkers & Chess R921-98



Technical Data

Total weight	21 oz./lin.yard
Backing	Osnaburg
Federal Spec	CCC-W-408A, Type II
CFFA Spec	CFFA-W-101-D, Type II
Fire testing	-NFPA 101, Life Safety Code -NFPA 255 (UL 723, CAN/ULC S102M) Tunnel Test, Class A -NFPA 286 Corner Burn Test, Meets requirements for Flame Spread and Smoke Developed -UL labeled and listed
Flame Spread	10
Smoke Developed	5
VOC	-Passed Test Protocol CA DHS Section 01350 for low VOC Emissions -Test Method CA/DHS/EHLB/R-174

Vinyl wallcoverings contain bactericides and mildew inhibitors to protect the product from microbiological and mildew growth.

Vinyl wallcoverings are manufactured Cadmium- and Mercury-free.

Within commercially acceptable tolerances, some variation of color may occur between dye lots.