

# 3" Universal Mount Series



MT-MR-UM-0250-0250-0025-090-XX



MT-MR-UM-0250-0550-0025-090-XX



MT-MR-UM-0250-1150-0025-090-XX

<b>Standard Material</b>	<b>Steel</b> = A36 Low Carbon Steel   <b>Aluminum</b> = 5052-H32 Aluminum
<b>Standard Finish</b>	02 - No Finish
<b>Available Finish(es)</b>	N/A
<b>Hole Size</b>	11/16" (17.46mm)
<b>Recommended Hardware</b>	5/8"-11 Thread Grade 8 Bolt, 2" Long   5/8" SAE Zinc-Plated Washer   5/8"-11 Thread, Grade 8 Hex Nut (M16 x 2 Thread, 50mm Long, Class 10.9 Bolt   M16, Class 10.9 Washer   M16 x 2 Thread, Class 10.9 Nut)
<b>Recommended Tools</b>	Tool Kit 1
<b>For More Info</b>	www.ModTruss.com

Part # Description	Size	Weight
<b>MT-MR-UM-0250-0250-0025-090-ST</b> 3" x 3" x 1/2" 90° Universal Mount <b>Steel</b>	2.50" x 2.50" x 0.25" (63.50mm x 63.50mm x 6.35mm)	0.65lbs (0.29kg)
<b>MT-MR-UM-0250-0250-0025-090-AL</b> 3" x 3" x 1/2" 90° Universal Mount <b>Aluminum</b>	2.50" x 2.50" x 0.25" (63.50mm x 63.50mm x 6.35mm)	0.20lbs (0.091kg)
<b>MT-MR-UM-0250-0550-0025-090-ST</b> 3" x 6" x 1/2" 90° Universal Mount <b>Steel</b>	2.50" x 5.50" x 0.25" (63.50mm x 139.70mm x 6.35mm)	1.65lbs (0.74kg)
<b>MT-MR-UM-0250-0550-0025-090-AL</b> 3" x 6" x 1/2" 90° Universal Mount <b>Aluminum</b>	2.50" x 5.50" x 0.25" (63.50mm x 139.70mm x 6.35mm)	0.55lbs (0.24kg)
<b>MT-MR-UM-0250-1150-0025-090-ST</b> 3" x 12" x 1/2" 90° Universal Mount <b>Steel</b>	2.50" x 11.50" x 0.25" (63.50mm x 292.10mm x 6.35mm)	3.45lbs (1.56kg)
<b>MT-MR-UM-0250-1150-0025-090-AL</b> 3" x 12" x 1/2" 90° Universal Mount <b>Aluminum</b>	2.50" x 11.50" x 0.25" (63.50mm x 292.10mm x 6.35mm)	1.20lbs (0.54kg)



Electrical Hazard



Flammability



In Stock



Made To Order



Customizable



Reusable



Compatible



Serialized & Traceable

U.S. Patent No. 8,418,425 & other patents pending

TR

EX

PL

JH

PA

HG

MR

AC

HW

TK

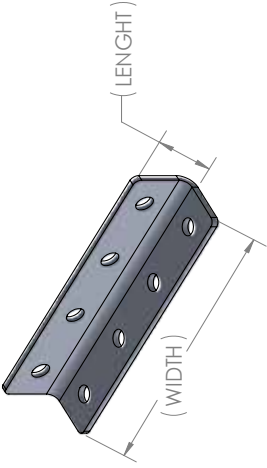
MH

FH

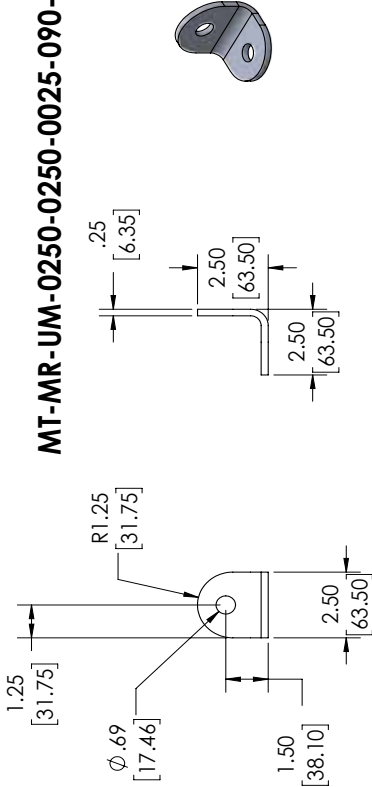
GL

Series | **MR** Motion & Rigging

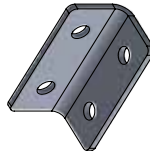
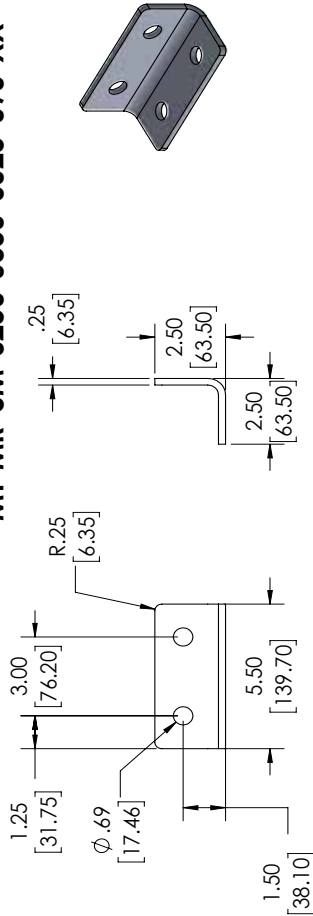
Product Number | MT-MR-UM-0250-XXXX-0025-090-XX



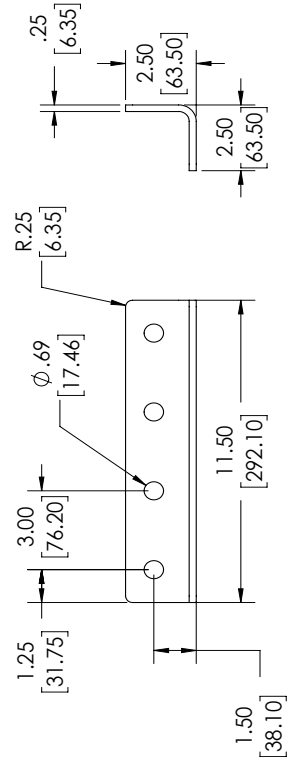
**MT-MR-UM-0250-0250-0025-090-XX**



**MT-MR-UM-0250-0550-0025-090-XX**



**MT-MR-UM-0250-1150-0025-090-XX**



LENGTH X WIDTH	MATERIAL	PART NUMBER
2.5"X2.5"	STEEL	MT-MR-UM-0250-0250-0025-090-ST
2.5"X2.5"	ALUMINIUM	MT-MR-UM-0250-0250-0025-090-AL
2.5"X5.5"	STEEL	MT-MR-UM-0250-0550-0025-090-ST
2.5"X5.5"	ALUMINIUM	MT-MR-UM-0250-0550-0025-090-AL
2.5"X11.5"	STEEL	MT-MR-UM-0250-1150-0025-090-ST
2.5"X11.5"	ALUMINIUM	MT-MR-UM-0250-1150-0025-090-AL

PRECISION BUILT - MADE - JOBS (L) ERS  
BRACKET (L) DIMENSIONS ARE IN MM

8/5/2019 REVISION: VI

---

DESCRIPTION: **3" UNIVERSAL MOUNT FAMILY**

PART NUMBER: **MT-MR-UM-0250-XXXX-0025-090-XX**