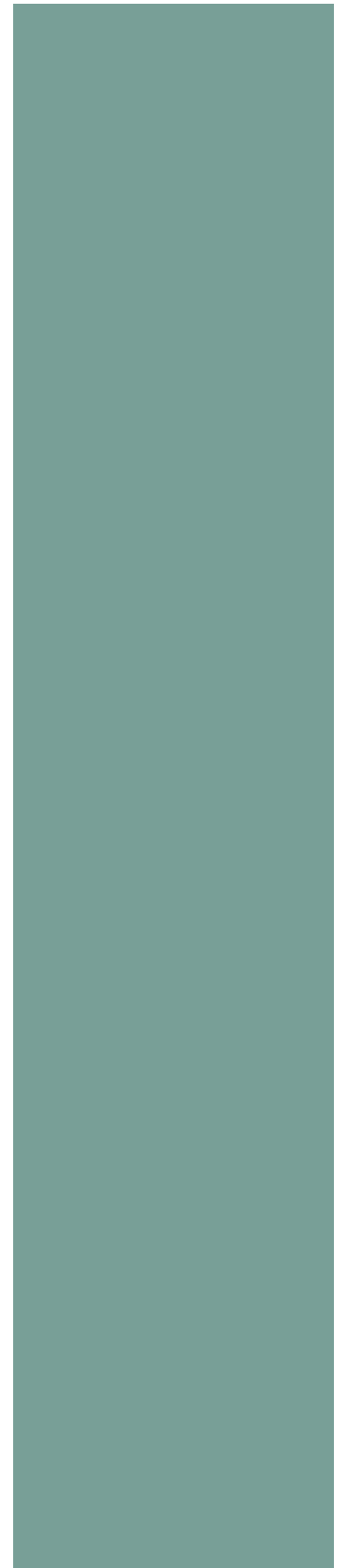


SECTION 7 PLANTING SPECIES



10. BIOREGIONS

10.1 Local Government Areas Bioregions

Across the extensive area covered by Moira Shire, Campaspe Shire Council and the Greater Shepparton City Council the landscape varies according to local conditions. These landscape types are called 'bioregions'.

Bioregions classify the environment using a range of attributes such as climate, geomorphology, geology, soils and vegetation. By identifying which bioregion a development falls within it is possible to better understand the local conditions, and therefore which plant species are more likely to survive and thrive in the landscape.

For further information on the bioregions please refer to section one in the appendix of this guide.

Four bioregions are present across Moira Shire, Shire of Campaspe and Greater Shepparton City Council:

- ▶ Victorian Riverina
- ▶ Murray Fans
- ▶ Northern Inland Slopes
- ▶ Goldfields

Below is a map showing the bioregions within the Local Government Areas. Plant species should be selected which are present in the relevant bioregion for the development site.

Further details about these bioregions can be found at

<http://www.depi.vic.gov.au/environment-and-wildlife/biodiversity/evc-benchmarks>



11. RECOMMENDED PLANTING LISTS

The following planting images and lists provides a guide for suggested and recommended species for landscape developments.

The applicant shall ensure that the species selected are appropriate to the individual site conditions and intended purpose, and that the plants are available from local nurseries.

Tree species selection shall be discussed with appropriate Council officers to determine the *right tree for the right location*.

11.1 Native Plants & Local/Indigenous Plants in Cultivation

GROUND COVERS & PERENNIAL HERBS

VR = Victorian Riverina
GF = Goldfields
MF = Murray Fans
NS = North Inland Slopes
R/V = Rare/Vulnerable plants



Acacia aculeatissima - Thin Leaf Wattle
VR, GF, NS



Acaena novae-zelandiae - Bidgee Widgee
VR, GF, MF, NS



Acrotriche serrulata - Honey Pots
VR, GF, NS



Ajuga australis - Austral Bugle
VR, GF, MF, NS



Alternanthera denticulata - Lesser Joyweed
VR, GF, MF, NS



Asperula conferta - Common Woodruff
VR, GF, MF, NS



Astroloma humifusum - Cranberry Heath
VR, GF, MF, NS



Atriplex semibaccata - Creeping Saltbush
VR, GF, MF, NS



Atriplex vesicaria - Bladder Saltbush
MF



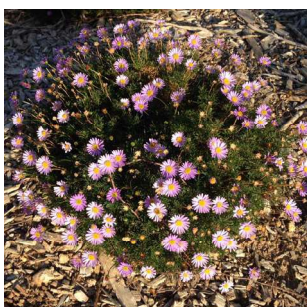
Bossiaea buxifolia - Matted Bossiaea
GF, NS



Bossiaea prostrata - Creeping Bossiaea
VR, GF, NS



Brachyscome chrysoglossa - Yellow-tongue Daisy (**R/V**)
VR, GF, MF



Brachyscome multifida - Cut Leaf Daisy
VR, GF, MF



Calotis scapigera - Tufted Burr Daisy
VR, GF, MF



Calocephalus citreus - Lemon Beauty Heads
VR, GF



Centella cordifolia - Swamp Pennywort
VR, GF, MF, NS



Chenopodium desertorum -
Desert Goosefoot
VR, GF, MF, NS



Chrysocephalum apiculatum -
Common Everlasting
VR, GF, MF, NS



Convolvulus angustissimus -
Blushing Bindweed
VR, GF, MF, NS



Convolvulus wimmerensis -
Bindweed
VR, MF, NS



Desmodium varians - Slender
Tick-Trefoil
VR, GF, NS



Dichondra repens - Kidney
Weed
VR, GF, MF



Dodonaea procumbens - Trailing
Hop Bush
VR, GF



Einadia hastata - Saloop Salt
Bush
VR, GF, MF, NS



Einadia nutans - Nodding Salt
Bush
GF, NS



Enchylaena tomentosa -
Creeping Ruby Salt Bush
VR, GF, MF



Eryngium paludosum - Long
Eryngium (R/V)
VR, GF, MF, NS



Glycine latrobeana - Clover
Glycine (R/V)
VR, GF



Glycine tabacina - Variable
Glycine
VR, GF, MF, NS



Goodenia blackiana - Primrose
Goodenia
VR, GF, MF



Goodenia lanata - Trailing
Goodenia
VR, GF, NS



Goodenia pinnatifida - Cut-leaf
Goodenia
VR, GF, MF, NS



Grevillea ilicifolia - Holly Grevillea
VR, GF, MF, NS



Grevillea obtecta - Elphinstone
Grevillea (R/V)
GF



Grevillea repens - Creeping
Grevillea (R/V)
VR, GF



Hydrocotyle laxiflora - Stinking
Pennywort
VR, GF, MF, NS



Hydrocotyle sibthorpioides - Shining Pennywort (wetland plant) **VR, GF, MF, NS**



Isotoma fluviatilis - Swamp Isotome **VR, GF, MF, NS**



Kennedia prostrata - Running Postman **VR, GF, MF, NS**



Lepidium pseudopapillosum - Erect Peppergrass **(R/V) VR, GF**



Lissanthe strigosa - Peach Heath **VR, GF, MF, NS**



Lobelia concolor - Milky Lobelia (wetland plant) **VR, GF, MF, NS**



Lobelia pedunculata - Matted Lobelia (wetland plant) **VR, GF, NS**



Lobelia pratioides - Poison Lobelia (wetland plant) **VR, GF, MF, NS**



Mimulus repens - Creeping Monkey Flower **VR**



Myoporum parvifolium - Creeping Boobialla **VR, GF**



Persoonia chamaepeuce - Dwarf Geebung **VR, GF, NS**



Pultenaea pedunculata - Matted Bush Pea **VR, GF**



Senecio behrianus - Stiff Groundsel **(R/V) VR, GF, MF**



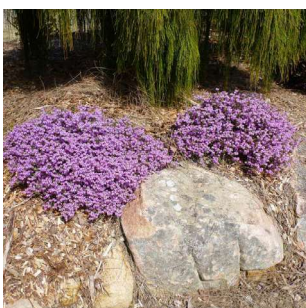
Stellaria pungens - Prickly Starwort **VR, GF, NS**



Swainsona procumbens - Small Leaf Broughton Pea **VR, GF, MF, NS**



Swainsona swainsonioides - Downy Swainson Pea **(R/V) VR, GF, NS**



Tetradlea thymifolia - Black-eyed Susan **(NSW, QLD)**



Veronica calycina - Hairy Speedwell **VR, GF, NS**



Veronica plebeia - Trailing Speedwell **VR, GF, NS**



Viola hederacea - Native Violet **VR, GF, MF, NS**

VR = Victorian Riverina
GF = Goldfields
MF = Murray Fans
NS = North Inland Slopes
R/V = Rare/Vulnerable plants

GRASSES & TUFTING PLANTS



Amphibromus nervosus - Swamp Wallaby Grass
VR, GF, MF, NS



Amphipogon caricinus var. *caricinus* - Long Greybeard Grass
VR, MF



Anigozanthos - Kangaroo Paws
(Western Australia)



Aristida behriana - Brush Wire Grass
VR, GF, MF, NS



Austrostipa breviglumis - Cane Spear Grass **(R/V)**
VR, GF, NS



Aristida ramosa - Purple Wire Grass
VR, GF, MF, NS



Austrodanthonia auriculata - Lobed Wallaby Grass
VR, GF, MF, NS



Austrodanthonia caespitosa - Common Wallaby Grass
VR, GF, MF, NS



Austrodanthonia carphoides - Short Wallaby Grass
VR, GF, MF, NS



Austrostipa densiflora - Foxtail Spear Grass
VR, GF, NS



Austrostipa elegantissima - Feather Spear Grass
VR, GF, MF, NS



Bothriochloa macra - Redleg Grass
VR, GF, MF, NS



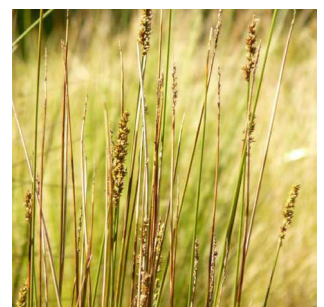
Bulbine glauca - Rock Lily
VR, NS



Chloris truncata - Windmill Grass
VR, GF, MF, NS



Carex appressa - Tall Sedge
VR, GF, MF, NS



Carex tereticaulis - Basket Sedge, Terete Culm-Sedge
VR, GF, MF, NS



Dianella revoluta - Black-anther
Flax-lily
VR, GF, MF



Doryanthes excelsa - Gymea Lily
(NSW)



Lomandra longifolia - Spiny-
headed Mat-rush
VR, GF, MF, NS



Poa labillardieri - Common
Tussock Grass
VR, GF, MF, NS

CLIMBERS AND RAMBLERS



Billardiera cymosa - Sweet Apple
Berry
VR, GF



Clematis microphylla -
Small-leaved Clematis
VR, GF, MF, NS



Glycine clandestina - Trailing
Glycine, Twining Glycine
VF, GF, MF, NS



Hardenbergia violacea - Happy
Wanderer, Purple Coral Pea,
Sarsaparilla **VR, GF, MF, NS**



Hibbertia scandens - Golden
Guinea Vine
(NSW, QLD)



Millettia megasperma - Native
Wisteria **(NSW, QLD)**



Pandorea jasminoides - Bower
Vine **(NSW, QLD)**



Rubus parvifolius - Native
Raspberry
VR, GF, NS

SMALL TO MEDIUM SHRUBS (1 – 3 M)

VR = Victorian Riverina
GF = Goldfields
MF = Murray Fans
NS = North Inland Slopes
R/V = Rare/Vulnerable plants



Acacia acinacea - Gold Dust Wattle
VR, GF, MF, NS



Acacia acinacea - Gold Dust Wattle (Red-bud form)
VR, GF, MF, NS



Acacia brachybotrya - Grey Mulga
VR, GF, MF



Atriplex nummularia - Old Man Salt-bush
VR, MF



Astroloma pinifolium - Pine Heath
GF



Baeckea crassifolia - Desert Heath-myrtle
GF



Calytrix tetragona - Common fringe myrtle
VR, GF, MF, NS



Cheiranthra cyanea - Blue Finger Flower
VR, MF, GF, NS



Correa reflexa - Common Correa
VR, GF, NS



Daviesia latifolia - Hop Bitter Pea
VR, GF, NS



Daviesia genistifolia - Broom Bitter Pea **(R/V)**
VR, GF, NS



Discaria pubescens - Australian Anchor Plant **(R/V)**
VR, GF, NS



Epacris impressa - Common Heath
GF



Eremophila divaricata - Spreading Emu Bush
VR, MF



Eremophila glabra - Common Emu Bush
VR, GF, MF



Eutaxia microphylla var. *diffusa* - Spineless Eutaxia **(R/V)**
VR, MF, GF



Grevillea alpina - Cat's Claw
VR, GF, MF, NS



Grevillea rosmarinifolia - Rosemary Grevillea
VR, GF, NS



Grevillea micrantha - Small Flower Grevillea
VR, GF



Hibbertia obtusifolia - Grey Guinea Flower (R/V)
VR, GF, NS



Hybanthus floribundus - Shrub Violet
VR, GF, MF



Leucopogon ericoides - Pink Beard Heath
VR, GF, NS



Micromyrtus ciliata - Fringed Heath Myrtle
VR, GF, MF, NS



Olearia pannosa subsp. cardiocarpa - Velvet Daisy Bush (R/V)
VR, GF



Olearia pimeleoides - Pimelea Daisy Bush
VR, GF, MF, NS



Ozothamnus retusus - Rough Everlasting
GF



Phebalium festivum - Dainty Phebalium (R/V)
VR, GF



Phebalium festivum - Prickly Waxflower (R/V)
GF



Philotheca verrucosa - Bendigo Wax (Semmens double white form) (R/V)
VR, GF, MF



Platylobium formosum - Handsome Flat Pea
GF



Prostanthera aspalathoides - Scarlet Mint Bush
VR, GF, MF, GF



Pultenaea humilis - Dwarf Bush Pea
VR, GF, NS



Templetonia stenophylla - Leafy Templetonia (R/V)
VR, GF, MF, NS



Tetratheca ciliata - Pink Bells
VR, GF, NS



Westringia eremicola - Slender Westringer
VR, GF, NS



Zieria aspalathoides - Whorled Zieria/Sandfly Bush (R/V)
VR, GF

VR = Victorian Riverina
GF = Goldfields
MF = Murray Fans
NS = North Inland Slopes
R/V = Rare/Vulnerable plants

MEDIUM TO LARGE SHRUBS (3 – 5 M)



Acacia hakeoides - Hakea Wattle
VR, GF, MF



Acacia implexa - Lightwood
VR, GF, MF, NS



Acacia montana - Mallee Wattle
VR, GF, MF, NS



Acacia oswaldii - Umbrella Wattle (**R/V**)
VR, GF, MF



Acacia paradoxa - Hedge Wattle
VR, GF, MF, NS



Acacia pycnantha - Golden Wattle
VR, GF, MF, NS



Acacia rigens - Needle Wattle, Nealie
VR, GF, MF



Acacia verniciflua - Varnish Wattle
VR, GF, MF, NS



Acacia williamsonii - Whirrakee Wattle (**R/V**)
VR, GF



Bursaria spinosa subsp. spinosa - Sweet Bursaria
VR, GF, MF, NS



Callistemon citrinus - Crimson Bottlebrush
GF



Callistemon rugulosus - Scarlet Bottlebrush
GF, MF, NS



Callistemon sieberi - River Bottlebrush
VR, GF, MF, NS



Cassinia ozothamnoides - Cottoney Haeckeria (**R/V**)
VR, GF, NS



Coprosma quadriifida - Prickly Currant Bush
VR, GF, NS



Daviesia latifolia - Hop Bitter Pea
VR, GF, NS



Dillwynia phyllicoides - Small Leaf Parrot Pea
VR, GF, NS



Dodonaea viscosa subsp. *cuneata* - Wedge-leaf Hop Bush
VR, GF, MF, NS



Eremophila longifolia - Turkey Bush
VR, GF, MF, NS



Eremophila glabra - Common Emu Bush
VR, GF, MF



Grevillea rosmarinifolia - Rosemary grevillea
VR, GF, NS



Goodia medicaginea - Western Golden Tip **(R/V)**
VR, GF, NS



Hakea decurrens subsp. *physocarpa* - Bushy Needlewood **GF**



Hakea tephrosperma - Hooked Needlewood
VR, GF, MF



Hovea asperifolia subsp. *asperifolia* - Mountain Beauty
VR, NS



Leptospermum lanigerum - Woolly Tea Tree
GF, NS



Logania albiflora - Narrow Leaf Logania
GF



Melaleuca decussata - Cross Leaf Honey Myrtle
VR, GF, NS



Melaleuca lanceolata - Moonah
VR, GF, MF



Myoporum montanum - Waterbush **(R/V)**
VR, GF, MF, NS



Ozothamnus rosmarinifolius - Rosemary Everlasting
NS



Pittosporum angustifolium - Weeping Pittosporum
VR, GF, MF



Pomaderris paniculosa subsp. *paniculosa* - Inland Pomaderris **(R/V)**
VR, GF



Pultenaea graveolens - Scented Bush Pea **(R/V)**
GF



Westringia crassifolia - Whipstick Westringia **(R/V)**
VR, GF



Xanthorrhoea glauca subsp. *angustifolia* - Grass Tree
VR, GF, MF

VR = Victorian Riverina
GF = Goldfields
MF = Murray Fans
NS = North Inland Slopes
R/V = Rare/Vulnerable plants

SMALL TO MEDIUM TREES <10M



Acacia dealbata -
Silver Wattle
VR, GF, MF, NS



Acacia implexa -
Lightwood
VR, GF, MF, NS



Acacia melanoxylon -
Blackwood
VR, GF, MF, NS



Acacia pendula -
Weeping Myall **(R/V)**
VR, MF



Acacia pycnantha - Golden
Wattle
VR, GF, MF, NS



Acacia salicina -
Weeping Acacia, Native Willow
VR, GF, MF, NS



Acacia stenophylla - Eumong,
River Cooba, Showstring Acacia
VR, MF



Allocasuarina luehmannii -
Buloke **(R/V)**
VR, GF, MF, NS



Brachychiton populneus -
Kurrajong
VR,GF, MF, NS



Callitris rhomboidea -
Port Jackson Pine
GF, NS



Corymbia ficifolia -
Red Flowering Gum
(Western Australia)



Callistemon sieberi -
River Bottlebrush
VR, GF, MF, NS



Eucalyptus caesia -
Silver Princess
(Western Australia)



Eucalyptus pauciflora subsp.
pauciflora - Little Snowman
VR, NS



Santalum acuminatum - Sweet
Quandong
VR, MF, NS



Leptospermum obovatum -
River Tea Tree
VR, GF, NS

MEDIUM TO LARGE TREES >10M



Angophora costata - Smooth-barked Apple (QLD, NSW)



Acacia stenophylla - Eumong VR, MF



Allocasuarina luehmannii - Buloke (R/V) VR, GF, MF, NS



Callitris glaucophylla - Murray Pine (R/V) VR, GF, MF, NS



Corymbia citriodora - Lemon-scented Gum (QLD)



Corymbia maculata - Spotted Gum (NSW)



Eucalyptus albens - White Box VR, GF, MF, NS



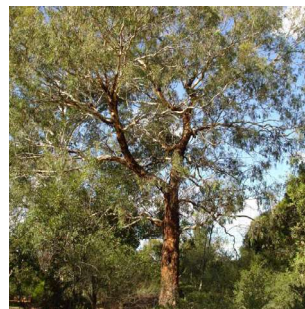
Eucalyptus camaldulensis - River Red Gum (*waterways/wetlands only) VR, GF, MF, NS



Eucalyptus largiflorens - Black Box, River Box VR, GF, MF, NS



Eucalyptus leucoxylon subsp pruinosa - Yellow Gum, White Ironbark VR, GF



Eucalyptus melliodora - Yellow Box VR, GF, MF, NS



Eucalyptus microcarpa - Grey Box VR, GF, MF, NS



Eucalyptus polyanthemos subsp vestita - Red Box VR, GF, NS



Eucalyptus tricarpa - Red Ironbark VR, GF, MF



Geijera parviflora - Wilga



Hymenosporum flavum - Native Frangipani (QLD, NSW)

11.2 Exotic Trees

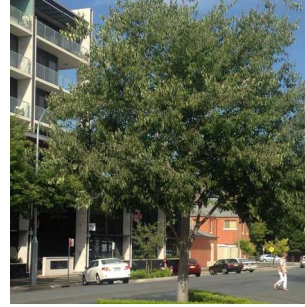
The following is a selection of exotic tree species suitable for the area. Applicants are to confirm proposed trees with Council to ensure the 'right tree for the right location'.



Acer x freemanii 'Jeffersred'
Autumn Blaze®
Jeffersred Maple



Acer rubrum 'October Glory'
Lipstick Maple



Celtis australis
Nettle Tree



Fraxinus americana 'Autumn Applause'
White Ash



Nyssa sylvatica
Black Tupelo



Pistacia chinensis
Chinese Pistacio



Platanus orientalis var. *insularis*
Plane



Pyrus calleryana 'Aristocrat'
Ornamental Pear



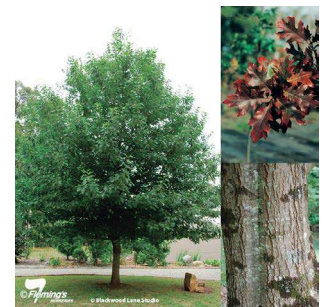
Quercus cerris
Turkey Oak



Quercus palustris 'Green Pillar'
Upright Oak



Quercus palustris
Pin Oak



Quercus rubra
Red Oak



Quercus robur 'Fastigiata'
Upright English Oak



Sapphora japonica
Japanese Pagoda



Ulmus parvifolia
Chinese Elm



Zelkova serrata
Japanese Elm

12. PLANT SPECIES LISTS

12.1 Ground Covers

(R denotes RURAL SPECIES LIST and only where ongoing pest plant maintenance will not be an issue)

<i>Botanical Name</i>	<i>Common Name</i>
Ground Covers	
<i>Acacia aculeatissima</i>	Thin Leaf Wattle
<i>Acaena novae-zelandiae</i>	Bidgee Widgee
<i>Acrotriche prostrata</i>	Trailing Ground Berry
<i>Acrotriche serrulata</i>	Honey Pots
<i>Ajuga australis</i>	Austral Bugle
<i>Alternanthera denticulata</i>	Lesser Joyweed
<i>Asperula conferta</i>	Common Woodruff
<i>Astroloma humifusum</i>	Cranberry Heath
<i>Atriplex leptocarpa</i> R	Creeping Saltbush
<i>Atriplex semibaccata</i> R	Berry Saltbush
<i>Atriplex vesicaria</i>	Bladder Salt Bush
<i>Bossiaea buxifolia</i>	Matted Bossiaea
<i>Bossiaea prostrata</i>	Creeping Bossiaea
<i>Brachyscome multifida</i> R	Cut Leaf Daisy
<i>Brachyscome chrysoglossa</i>	Yellow-tongue Daisy
<i>Calocephalus citreus</i> R	Lemon Beauty Heads
<i>Calotis scapigera</i> R	Tufted Burr Daisy
<i>Carpobrotus modestus</i>	Inland Pigface
<i>Centella cordifolia</i>	Swamp Pennywort
<i>Chenopodium desertorum</i>	Desert Goosefoot
<i>Chrysocephalum apiculatum</i> R	Common Everlasting
<i>Chrysocephalum semipapposum</i> R	Clustered Everlasting
<i>Convolvulus angustissimus</i> R	Australian Bindweed
<i>Convolvulus erubescens</i> R	Blushing Bindweed
<i>Convolvulus wimmerensis</i> R	Pink Bindweed
<i>Dichondra repens</i>	Kidney Weed
<i>Dodonaea procumbens</i> R	Trailing Hop Bush
<i>Einadia hastata</i> R	Saloop Salt Bush
<i>Einadia nutans</i> R	Nodding Salt Bush
<i>Enchylaena tomentosa</i> R	Ruby Salt Bush
<i>Eremophila glabra prostrata</i> R	Silver Spread Emu Bush
<i>Eremophila debilis</i> R	Amula
<i>Eryngium paludosum</i>	Long Eryngium
<i>Glycine latrobeana</i>	Clover Glycine
<i>Glycine tabacina</i>	Variable Glycine
<i>Goodenia blackiana</i>	Primrose Goodenia
<i>Goodenia lanata</i>	Trailing Goodenia
<i>Goodenia pinnatifida</i>	Cutleaf Goodenia
<i>Grevillea ilicifolia</i>	Holly Grevillea
<i>Grevillea obtecta</i>	Elphinstone Grevillea

<i>Botanical Name</i>	<i>Common Name</i>
<i>Grevillea repens</i>	Creeping Grevillea
<i>Hibbertia exutiacies</i>	Tangled Guinea Flower
<i>Hydrocotyle laxiflora</i>	Stinking Pennywort
<i>Hydrocotyle sibthorpioides</i>	Shining Pennywort
<i>Isotoma fluviatilis</i>	Swamp Isotome
<i>Kennedia prostrata</i>	Running Postman
<i>Kunzea pomifera</i>	Muntries
<i>Lissanthe strigosa</i>	Peach Heath
<i>Lobelia concolor</i>	Milky Lobelia
<i>Lobelia pendunculata</i>	Matted Lobelia
<i>Lobelia pratioides</i>	Poison Lobelia
<i>Mimulus repens</i>	Creeping Monkey Flower
<i>Myoporum parvifolium</i>	Creeping Boobialla
<i>Persicaria prostrata</i>	Creeping Knotweed
<i>Persoonia chamaepeuce</i>	Dwarf Geebung
<i>Podolobium procumbens</i>	Trailing Shaggy-pea
<i>Pultenaea pedunculata</i>	Matted Bush Pea
<i>Pycnosorus globulus</i>	Billy Button
<i>Scleranthus biflorus</i>	Twin-flower Knaweel
<i>Stellaria pungens</i>	Prickly Starwort
<i>Swainsona procumbens</i>	Small Leaf Broughton Pea
<i>Swainsona swainsonioides</i>	Downy Swainson Pea
<i>Tetralochea thymifolia</i>	Black-eyed Susan
<i>Veronica calycina</i>	Hairy Speedwell
<i>Veronica plebeia</i>	Trailing Speedwell
<i>Viola hederacea</i>	Native Violet

12.2 Climbers and Ramblers

<i>Botanical Name</i>	<i>Common Name</i>
Climbers and Ramblers	
<i>Billardiera cymosa</i>	Sweet Apple Berry
<i>Billardiera longifolia</i>	Purple Apple Berry
<i>Billardiera scandens</i>	Common Apple Berry
<i>Clematis aristata</i>	Old Man's Beard
<i>Clematis microphylla</i>	Small-leaved Clematis
<i>Glycine clandestina</i>	Trailing Glycine
<i>Hardenbergia violacea</i>	Happy Wanderer, Sarsparilla
<i>Hibbertia scandens</i>	Golden Guinea Vine
<i>Pandorea jasminoides</i>	Bower Vine
<i>Rubus parvifolius</i>	Native Raspberry

12.3 Grasses

(R denotes RURAL SPECIES LIST and only where ongoing pest plant maintenance will not be an issue)

<i>Botanical Name</i>	<i>Common Name</i>
Grasses	
<i>Amphibromus nervosus</i> R	Swamp Wallaby Grass
<i>Amphipogon caricinus</i> var. <i>caricinus</i>	Long Greybeard Grass
<i>Aristida behriana</i>	Brush Wire Grass
<i>Aristida ramosa</i>	Purple Wire Grass
<i>Austrodanthonia auriculata</i>	Lobed Wallaby Grass
<i>Austrodanthonia bipartita</i> R	Wallaby Grass
<i>Austrodanthonia caespitosa</i> R	Common Wallaby Grass
<i>Austrodanthonia carphoides</i>	Short Wallaby Grass
<i>Austrodanthonia duttoniana</i>	Brown Back Wallaby Grass
<i>Austrodanthonia eriantha</i>	Hill Wallaby Grass
<i>Austrodanthonia fulva</i>	Copper-awned Wallaby-grass
<i>Austrodanthonia geniculata</i>	Kneed Wallaby Grass
<i>Austrodanthonia induta</i>	Yellow Anther Wallaby Grass
<i>Austrodanthonia penicillata</i>	Slender Wallaby Grass
<i>Austrodanthonia pilosa</i>	Velvet Wallaby Grass
<i>Austrodanthonia racemosa</i>	Clustered Wallaby-grass
<i>Austrodanthonia richardsonii</i>	Straw Wallaby-grass
<i>Austrodanthonia setacea</i>	Bristly Wallaby Grass
<i>Austrodanthonia tenuior</i>	Short-awn Wallaby-grass
<i>Austrostipa aristiglumis</i>	Plump Spear Grass
<i>Austrostipa blackii</i>	Plains Spear Grass
<i>Austrostipa breviglumis</i>	Cane Spear Grass
<i>Austrostipa densiflora</i>	Foxtail Spear Grass
<i>Austrostipa elegantissima</i> R	Feather Spear Grass
<i>Austrostipa gibbosa</i>	Spurred Spear Grass
<i>Austrostipa mollis</i>	Soft Spear Grass
<i>Austrostipa nodosa</i>	Knotty Speargrass
<i>Austrostipa rudis</i>	Veined Spear-grass
<i>Austrostipa oligostachya</i>	Fine-head Spear-grass
<i>Austrostipa scabra</i>	Rough Spear Grass
<i>Austrostipa semibarbata</i>	Fibrous Spear Grass
<i>Austrostipa setacea</i>	Corkscrew Spear Grass
<i>Austrostipa stiposa</i>	Tasmanian Spear-grass
<i>Austrostipa tuckeri</i>	Tucker's Spear-grass
<i>Bothriochloa macra</i>	Redleg Grass
<i>Chloris truncata</i>	Windmill Grass
<i>Deschampsia caespitosa</i>	Tufted Hair Grass
<i>Dichanthium sericeum</i>	Silky Blue-grass
<i>Dichelachne crinita</i>	Long Hair Plume Grass
<i>Dichelachne hirtella</i>	Slender Plume Grass

<i>Botanical Name</i>	<i>Common Name</i>
<i>Distichlis distichophylla</i>	Emu Grass
<i>Elymus scaber</i>	Common Wheat Grass
<i>Enneapogon nigricans</i>	Pappus Grass
<i>Eragrostis australasica</i>	Cane Grass
<i>Eragrostis brownii</i>	Common Love Grass
<i>Eragrostis diandra</i>	Clustered Love Grass
<i>Eragrostis dielsii</i>	Mallee Love-grass
<i>Glyceria australis</i>	Manna Grass
<i>Hemarthria uncinata</i>	Mat Grass
<i>Homopholis proluta</i>	Rigid Panic
<i>Joycea pallida</i>	Red Anther Wallaby Grass
<i>Lachnagrostis filiformis</i> var. 2	Common Blown Grass (Annual)
<i>Microlaena stipoides</i> R	Weeping Grass
<i>Pentapogon quadrifidus</i>	Five-awned Spear Grass
<i>Poa labillardieri</i> R	Common Tussock Grass
<i>Poa morrisii</i>	Velvet Tussock Grass
<i>Poa sieberiana</i>	Fine-leaf Tussock Grass
<i>Poa tenera</i>	Slender Tussock Grass
<i>Themeda triandra</i> R	Kangaroo Grass

12.4 Ferns, Perennial Herbs, Lilies, Rushes, Sedges & Other Tufts

(R denotes RURAL SPECIES LIST and only where ongoing pest plant maintenance will not be an issue)

<i>Botanical Name</i>	<i>Common Name</i>
Ferns, Perennial Herbs, Lilies, Rushes, Sedges & Other Tufts	
<i>Acaena echinata</i>	Sheep's Burr
<i>Adiantum aethiopicum</i>	Common Maidenhair
<i>Anigozanthos</i>	Kangaroo Paws
<i>Arthropodium fimbriatum</i>	Nodding Chocolate Lily
<i>Arthropodium milleflorum</i>	Pale Vanilla Lily
<i>Arthropodium minus</i>	Small Vanilla Lily
<i>Arthropodium strictum</i>	Chocolate Lily
<i>Baumea articulata</i>	Jointed Twig Rush
<i>Blechnum minus</i>	Soft Water Fern
<i>Bolboschoenus caldwellii</i>	Sea Club Rush
<i>Brachyscome basaltica</i>	Swamp Daisy
<i>Brachyscome chrysoglossa</i>	Yellow-tongue Daisy
<i>Brachyscome ciliaris</i>	Variable Daisy
<i>Brachyscome dentata</i>	Lobe-seed Daisy
<i>Brachyscome diversifolia</i>	Large-headed Daisy
<i>Brunonia australis</i>	Blue Pincushion
<i>Bulbine bulbosa</i>	Bulbine Lily
<i>Bulbine glauca</i>	Rock Lily
<i>Burchardia umbellata</i>	Milkmaids
<i>Caesia calliantha</i>	Blue Grass Lily
<i>Calocephalus citreus</i>	Lemon Beauty Heads
<i>Calocephalus lacteus</i>	Milky Beauty Heads
<i>Calocephalus sonderi</i>	Pale Beauty Heads
<i>Calostemma purpureum</i>	Garland Lily
<i>Calotis cuneifolia</i>	Purple Burr Daisy
<i>Calotis scabiosifolia</i> var. <i>integrifolia</i>	Rough Burr Daisy
<i>Calotis scabiosifolia</i> var. <i>scabiosifolia</i>	Rough Burr Daisy
<i>Carex appressa</i>	Tall Sedge
<i>Carex breviculmis</i>	Short Stem Sedge
<i>Carex fascicularis</i>	Tassel Sedge
<i>Carex gaudichaudiana</i>	Tufted Sedge
<i>Carex inversa</i>	Knob Sedge
<i>Carex tereticaulis</i>	Basket Sedge
<i>Centipeda cunninghamii</i>	Old Man's Weed
<i>Centipeda minima</i>	Small Old Man's Weed
<i>Cheilanthes austrotenuifolia</i>	Rock Fern
<i>Cheilanthes sieberi</i>	Mulga Fern
<i>Chrysocephalum baxteri</i>	White Everlasting
<i>Chrysocephalum semipapposum</i>	Clustered Everlasting

<i>Botanical Name</i>	<i>Common Name</i>
<i>Craspedia paludicola</i>	Swamp Billy Buttons
<i>Craspedia variabilis</i>	Common Billy Buttons
<i>Correa reflexa</i>	Common Correa
<i>Cullen microcephalum</i>	Dusky Scurf-pea
<i>Cullen parvum</i>	Small Scurf Pea
<i>Cullen tenax</i>	Tough Scurf Pea
<i>Cymbonotus pressianus</i>	Austral Bear's Ears
<i>Cynoglossum sauevolens</i>	Sweet Hounds Tongue
<i>Cyperus exaltatus</i>	Tall Flat Sedge
<i>Cyperus gunnii</i>	Flecked Flat Sedge
<i>Dianella admixta</i> (formerly <i>D. revoluta</i>) R	Flax Lily
<i>Dianella amoena</i>	Matted Flax Lily
<i>Dianella</i> sp. aff. <i>longifolia</i> (<i>Benambra</i>)	Arching Flax-lily
<i>Dianella tarda</i>	Smooth Flax Lily
<i>Dianella porracea</i>	Riverine Flax-lily
<i>Dianella tasmanica</i>	Tasman Flax Lily
<i>Doodia australis</i>	Common Rasp Fern
<i>Doryanthes excelsa</i>	Gyma Lily
<i>Eryngium ovinum</i>	Blue Devil
<i>Eryngium paludosum</i>	Long Eryngium
<i>Gahnia radula</i>	Thatch Saw-sedge
<i>Gahnia sieberiana</i>	Red-fruited Saw-sedge
<i>Galium gaudichaudii</i>	Rough Bedstraw
<i>Geranium retrorsum</i>	Crane's Bill
<i>Geranium solanderi</i>	Austral Crane's Bill
<i>Glischrocaryon behrii</i>	Golden Pennants
<i>Glycine latrobeana</i>	Clover Glycine
<i>Gonocarpus elatus</i>	Tall Raspwort
<i>Gonocarpus tetragynus</i>	Common Raspwort
<i>Goodenia benthamiana</i>	Clasping Goodenia
<i>Goodenia elongata</i>	Lanky Goodenia
<i>Goodenia gracilis</i>	Slender Goodenia
<i>Goodenia heteromera</i>	Spreading Goodenia
<i>Haloragis glauca</i>	Grey Raspwort
<i>Haloragis heterophylla</i>	Varied Raspwort
<i>Helichrysum rutidolepis</i>	Pale Everlasting
<i>Helichrysum scorpioides</i>	Button Everlasting
<i>Hypoxis glabella</i>	Tiny Star
<i>Isotoma axillaris</i>	Showy Isotome
<i>Juncus amabilis</i>	Clustered Rush
<i>Juncus aridicola</i>	Tussock Rush

Botanical Name	Common Name
<i>Juncus flavidus</i>	Rush
<i>Juncus holoschoenus</i>	Jointed-leaf Rush
<i>Juncus homalocaulis</i>	Wiry Rush
<i>Juncus ingens</i>	Giant Rush
<i>Juncus pallidus</i>	Pale Rush
<i>Juncus planifolius</i>	Broad-leaf Rush
<i>Juncus radula</i>	Hoary Rush
<i>Juncus sarophorus</i>	Broom Rush
<i>Lagenophora stipitata</i>	Common Lagenifera
<i>Leiocarpa panaetioides</i>	Woolly Buttons
<i>Lepidosperma curtisiae</i>	Short Rapier Sedge
<i>Lepidosperma filiforme</i>	Rapier-sedge
<i>Lepidosperma semiteres</i>	Wire Rapier-sedge
<i>Lepidium pseudopapillosum</i>	Erect Peppergrass
<i>Leptorhynchus squamatus</i>	Scaly Buttons
<i>Leptorhynchus tenuifolius</i>	Wiry Buttons
<i>Leucochrysum albicans</i>	Hoary Sunray
<i>Leucochrysum albicans</i> var. <i>tricolor</i>	Hoary Sunray
<i>Linum marginale</i>	Native Flax
<i>Lobelia anceps</i>	Angled Lobelia
<i>Lomandra collina</i>	Pale Mat Rush
<i>Lomandra filiformis</i>	Wattle Mat Rush
<i>Lomandra longifolia</i>	Spiny-headed Mat Rush
<i>Lomandra micrantha</i>	Small Flowered Mat Rush
<i>Lomandra multiflora</i>	Many-flowered Mat Rush
<i>Luzula meridionalis</i>	Woodrush
<i>Lycopus australis</i>	Australian Gypsywort
<i>Maireana enchylaenoides</i>	Wingless Bluebush
<i>Maireana excavata</i>	Bottle Fissure-weed
<i>Maireana humillima</i>	Dwarf Bluebush
<i>Mentha laxiflora</i>	Forest Mint
<i>Mentha saturoides</i>	Native Pennyroyal
<i>Microseris lanceolata</i>	Yam Daisy
<i>Microtis unifolia</i>	Common Onion Orchid
<i>Minuria integerrima</i>	Smooth Minuria
<i>Minuria leptophylla</i>	Minnie Daisy
<i>Nicotiana suaveolens</i>	Austral Tobacco
<i>Opercularia varia</i>	Variable Stinkweed
<i>Oreomyrrhis eriopoda</i>	Hairy Caraway
<i>Pelargonium australe</i>	Austral Stork's-bill
<i>Pelargonium rodneyanum</i>	Magenta Stork's-bill
<i>Plantago gaudichaudii</i>	Narrow Leaf Plantain

Botanical Name	Common Name
<i>Podolepis jaceoides</i>	Showy Podolepis
<i>Podolepis</i>	Riverine Podolepis
<i>Pomax umbellata</i>	Pomax
<i>Pterostylis curta</i>	Blunt Greenhood Orchid
<i>Ptilotus exaltatus</i>	Lamb-tails
<i>Ptilotus macrocephalus</i>	Green Pusstail
<i>Ptilotus spathulatus</i>	Pusstails
<i>Pycnosorus chrysanthes</i>	Golden Billy Buttons
<i>Pycnosorus globosus</i>	Drumsticks
<i>Ranunculus amphitrichus</i>	Small River Buttercup
<i>Ranunculus lappaceus</i>	Australian Buttercup
<i>Ranunculus pachycarpus</i>	Thick-fruit Buttercup
<i>Rhodanthe anethemoides</i>	Chamomile Sunray
<i>Rhodanthe corymbiflora</i>	Grey Sunray (Annual)
<i>Rutidosis leptorhynchoides</i>	Button Wrinklewort
<i>Senecio behrianus</i>	Stiff Groundsel
<i>Solenogyne dominii</i>	Solenogyne
<i>Stackhousia monogyna</i>	Creamy Candles
<i>Stylidium graminifolium</i>	Grass Trigger Plant
<i>Stypantra glauca</i>	Nodding Blue Lily
<i>Teucrium racemosum</i>	Grey Germander
<i>Thysanotus patersonii</i>	Twining Fringe Lily
<i>Tricoryne elatior</i>	Yellow Rush Lily
<i>Velleia paradoxa</i>	Spur Velleia
<i>Wahlenbergia communis</i>	Tufted Blue Bell
<i>Wahlenbergia fluminalis</i>	River Blue Bell
<i>Wahlenbergia gracilentata</i>	Annual Blue Bell
<i>Wahlenbergia gracilis</i>	Sprawling Blue Bell
<i>Wahlenbergia luteola</i>	Yellow-backed Blue Bell
<i>Wahlenbergia stricta</i>	Tall Blue Bell
<i>Wurmbea dioica</i>	Early Nancies
<i>Xanthorrhoea minor</i>	Small Grass Tree
<i>Xerochrysum bracteatum</i>	Golden Everlasting
<i>Xerochrysum palustre</i>	Swamp Everlasting
<i>Xerochrysum viscosum</i>	Sticky Everlasting

12.5 Small to Medium Shrubs (1 – 3 m)

(R denotes RURAL SPECIES LIST and only where ongoing pest plant maintenance will not be an issue)

<i>Botanical Name</i>	<i>Common Name</i>
Small to Medium Shrubs	
<i>Acacia acinacea</i> R	Gold Dust Wattle
<i>Acacia decora</i>	Western silver wattle
<i>Acacia gunnii</i>	Ploughshare Wattle
<i>Acacia mitchellii</i>	Mitchell's Wattle
<i>Astroloma conostephioides</i>	Flame Heath
<i>Astroloma pinifolium</i>	Pine Heath
<i>Baeckea crassifolia</i>	Desert Heath-myrtle
<i>Bossiaea cordigera</i>	Wiry Bossiaea
<i>Brachyloma daphnoides</i>	Daphne Heath
<i>Brachyloma ericoides</i>	Brush Heath
<i>Calytrix tetragona</i>	Common fringe myrtle
<i>Cassinia arcuata</i> R	Drooping Cassinia
<i>Cheiranthra cyanea</i>	Blue Finger Flower
<i>Chenopodium curvispicatum</i>	Cottony Salt Bush
<i>Chenopodium nitrariaceum</i>	Nitre goosefoot
<i>Correa lawrenceana</i>	Mountain Correa
<i>Correa reflexa</i>	Common Correa
<i>Crowea exalata</i>	Small Crowea
<i>Cryptandra amara</i>	Bitter Cryptandra
<i>Cryptandra tomentosa</i>	Prickly Cryptandra
<i>Dampiera dysantha</i>	Shrubby Dampiera
<i>Daviesia benthamii</i>	Spiny Bitter Pea
<i>Daviesia genistifolia</i>	Broom Bitter Pea
<i>Daviesia latifolia</i>	Hop Bitter Pea
<i>Derwentia derwentiana</i>	Derwent Speedwell
<i>Derwentia perfoliata</i>	Digger's Speedwell
<i>Dillwynia cinerascens</i> R	Grey Parrot Pea
<i>Dillwynia hispida</i>	Red Parrot Pea
<i>Dillwynia sericea</i>	Showy Parrot Pea
<i>Discaria pubescens</i>	Anchor Plant
<i>Epacris impressa</i>	Common Heath
<i>Eremophila glabra</i> R	Emu Bush
<i>Eremophila divaricata</i>	Spreading Emu Bush
<i>Euomyrtus ramosissima</i>	Rosy Heath-myrtle
<i>Eutaxia microphylla</i> var. <i>microphylla</i> R	Common Eutaxia
<i>Eutaxia microphylla</i> var. <i>diffusa</i>	Spineless Eutaxia
<i>Gompholobium huegelii</i>	Common Wedge Pea
<i>Goodenia varia</i>	Sticky Goodenia
<i>Grevillea alpina</i>	Cat's Claw (VR, MF, GF, NS)
<i>Grevillea dryophylla</i>	Goldfields Grevillea
<i>Grevillea micrantha</i>	Small-flower Grevillea

<i>Botanical Name</i>	<i>Common Name</i>
<i>Grevillea rosmarinifolia</i>	Rosemary Grevillea
<i>Halgania cyanea</i>	Mallee Blue Flower
<i>Hibbertia prostrata</i>	Bundled Guinea Flower
<i>Hibbertia humifusa</i> subsp. <i>humifusa</i>	Guinea flower
<i>Hibbertia obtusifolia</i>	Grey Guinea Flower
<i>Hibbertia riparia</i>	Erect Guinea Flower
<i>Hovea heterophylla</i>	Common Hovea
<i>Hybanthus floribundus</i>	Shrub Violet
<i>Lasiopetalum baueri</i>	Slender Velvet Bush
<i>Leucopogon ericoides</i>	Pink Beard Heath
<i>Leucopogon rufus</i>	Ruddy Beard Heath
<i>Leucopogon virgatus</i>	Common Beard Heath
<i>Malva australiana</i>	Australian Hollyhock
<i>Maireana brevifolia</i>	Yanga Bush
<i>Maireana microphylla</i> R	Eastern Cottonbush
<i>Maireana cheelii</i>	Chariot Wheels
<i>Maireana decalvans</i>	Black Cottonbush
<i>Melichrus urceolatus</i>	Urn Heath
<i>Micromyrtus ciliata</i>	Fringed Heath Myrtle
<i>Monotoca scoparia</i>	Prickly Broom Heath
<i>Olearia floribunda</i>	Heath Daisy Bush
<i>Olearia glandulosa</i>	Swamp Daisy Bush
<i>Olearia myrsinoides</i>	Silky Daisy Bush
<i>Olearia pannosa</i> subsp. <i>cardiocarpa</i>	Velvet Daisy Bush
<i>Olearia pimeleoides</i>	Pimelea Daisy Bush
<i>Ozothamnus retusus</i>	Rough Everlasting
<i>Phebalium festivum</i>	Dainty Phebalium
<i>Philothea angustifolia</i>	Small Leaf Waxflower
<i>Philothea pungens</i>	Prickly Waxflower
<i>Philothea verrucosa</i>	Bendigo Waxflower
<i>Philothea verrucosa</i>	Double White Form
<i>Pimelea curviflora</i>	Curved Rice Flower
<i>Pimelea glauca</i>	Smooth Rice Flower
<i>Pimelea humilis</i>	Small Rice Flower
<i>Pimelea linifolia</i>	Slender Rice Flower
<i>Pimelea phyllicoides</i>	Hairy Rice Flower
<i>Platylobium formosum</i>	Handsome Flat Pea
<i>Platylobium obtusangulum</i>	Common Flat Pea
<i>Prostanthera aspalathoides</i>	Scarlet Mint Bush
<i>Prostanthera saxicola</i>	Slender Mint Bush
<i>Pseudanthus ovalifolius</i>	Oval Leaf Pseudanthus

Botanical Name	Common Name
<i>Pultenaea humilis</i>	Dwarf Bush Pea
<i>Pultenaea largiflorens</i>	Twiggy Bush Pea
<i>Pultenaea laxiflora</i>	Loose Flower Bush Pea
<i>Pultenaea prostrata</i>	Silky Bush Pea
<i>Pultenaea reflexifolia</i>	Wombat Bush Pea
<i>Pultenaea scabra</i>	Rough Bush Pea
<i>Rhagodia spinescens</i> R	Hedge Saltbush
<i>Rhytidosporum procumbens</i>	White Marianth
<i>Senecio odoratus</i>	Scented Groundsel
<i>Senna artemisioides</i> subsp. <i>zygophylla</i> R	Desert Cassia
<i>Spyridium eriocephalum</i>	Heath Spyridium
<i>Templetonia stenophylla</i>	Leafy Templetonia
<i>Tetralthea ciliata</i>	Pink Bells
<i>Vittadinia cuneata</i> (v. <i>gracilis</i>)	Woolly New Holland Daisy
<i>Vittadinia muelleri</i>	Narrow-leaf New Holland Daisy
<i>Westringia eremicola</i>	Slender Westringia
<i>Zieria aspalathoides</i>	Whorled Zieria/Sandfly Bush

12.6 Medium to Large Shrubs (3 - 5 m)

(R denotes RURAL SPECIES LIST and only where ongoing pest plant maintenance will not be an issue)

<i>Botanical Name</i>	<i>Common Name</i>
Medium to Large Shrubs	
<i>Acacia aspera</i>	Rough Wattle
<i>Acacia ausfeldii</i>	Whipstick Cinnamon Wattle
<i>Acacia brachybotrya</i> R	Grey Mulga
<i>Acacia deanei</i> subsp. <i>paucijuga</i>	Deane's Wattle
<i>Acacia difformis</i>	Drooping Wattle
<i>Acacia euthycarpa</i>	Wallowa
<i>Acacia flexifolia</i>	Bent Leaf Wattle
<i>Acacia genistifolia</i>	Spreading Wattle
<i>Acacia hakeoides</i> R	Hakea Wattle
<i>Acacia lanigera</i>	Woolly Wattle
<i>Acacia leprosa</i>	Cinnamon Wattle
<i>Acacia ligulata</i> R	Small Cooba
<i>Acacia lineata</i>	Streaked Wattle
<i>Acacia melvillei</i> R	Yarran
<i>Acacia microcarpa</i>	Manna Wattle
<i>Acacia mitchellii</i>	Mitchell's Wattle
<i>Acacia montana</i> R	Mallee Wattle
<i>Acacia mucronata</i>	Variable Sallow Wattle
<i>Acacia oswaldii</i> R	Umbrella Wattle
<i>Acacia oxycedrus</i>	Spike Wattle
<i>Acacia paradoxa</i>	Hedge Wattle
<i>Acacia pendula</i> R	Weeping Myall
<i>Acacia penninervis</i> R	Hickory Wattle
<i>Acacia pravissima</i>	Oven's Wattle
<i>Acacia pycnantha</i> R	Golden Wattle
<i>Acacia retinodes</i>	Wirilda
<i>Acacia rigens</i>	Nealie
<i>Acacia rubida</i>	Red Stem Wattle
<i>Acacia verniciflua</i> R	Varnish Wattle
<i>Acacia verticillata</i>	Prickly Moses
<i>Acacia williamsonii</i>	Whirrakee Wattle
<i>Allocasuarina muelleriana</i>	Slaty She Oak
<i>Astrotricha asperifolia</i>	Rough Starhair
<i>Atriplex rhagodioides</i>	Silver Salt Bush
<i>Babingtonia behrii</i>	Broom Baeckea
<i>Baeckea utilis</i>	Mountain Baeckea
<i>Banksia marginata</i> R	Silver Banksia
<i>Boronia anemonifolia</i>	Sticky Boronia
<i>Bursaria spinosa</i> subsp. <i>lasiophylla</i> R	Bursaria
<i>Bursaria spinosa</i> subsp. <i>spinosa</i> R	Sweet Bursaria

<i>Botanical Name</i>	<i>Common Name</i>
<i>Callistemon citrinus</i>	Crimson bottlebrush
<i>Callistemon rugulosus</i>	Scarlet Bottlebrush
<i>Callistemon salignus</i>	White weeping bottlebrush
<i>Callistemon sieberi</i> R	River Bottlebrush
<i>Calytrix tetragona</i> R	Common Fringe Myrtle
<i>Cassinia aculeata</i>	Dogwood
<i>Cassinia arcuata</i> R	Drooping Cassinia
<i>Cassinia longifolia</i>	Shiny Cassinia
<i>Cassinia ozothamnoides</i>	Cottoney Haeckeria
<i>Cassinia uncata</i>	Sticky Cassinia
<i>Coprosma quadrifida</i>	Prickly Currant Bush
<i>Correa glabra</i>	Rock Correa
<i>Daviesia arenaria</i>	Sandhill Bitter Pea
<i>Daviesia benthamii</i> subsp. <i>humilis</i>	Spiny Bitter Pea
<i>Daviesia latifolia</i>	Hop Bitter Pea
<i>Daviesia leptophylla</i>	Narrow Leaf Bitter Pea
<i>Daviesia ulicifolia</i>	Gorse Bitter Pea
<i>Dillwynia phyllicoides</i>	Small Leaf Parrot Pea
<i>Dillwynia ramosissima</i>	Bushy Parrot Pea
<i>Dodonaea viscosa</i> subsp. <i>angustissima</i> R	Narrow-leaf Hop-bush
<i>Dodonaea viscosa</i> subsp. <i>cuneata</i> R	Wedge-leaf Hop Bush
<i>Dodonaea viscosa</i> subsp. <i>spatulata</i> R	Sticky Hop-Bush
<i>Eremophila bignoniiflora</i> R	Creek Wilga
<i>Eremophila deserti</i>	Turkey Bush
<i>Eremophila longifolia</i> R	Berrigan Emu Bush
<i>Exocarpos strictus</i>	Dwarf Cherry
<i>Goodenia ovata</i>	Hop Goodenia
<i>Goodia lotifolia</i>	Golden Tip Goodenia
<i>Goodia medicaginea</i>	Western Golden Tip Goodenia
<i>Grevillea rosmarinifolia</i>	Rosemary grevillea
<i>Hakea decurrens</i> subsp. <i>physocarpa</i>	Bushy Needlewood
<i>Hakea laurina</i>	Kodset pincushion
<i>Hakea tephrosperma</i> R	Hooked Needlewood
<i>Hovea asperifolia</i> subsp. <i>asperifolia</i>	Mountain Beauty
<i>Indigofera australis</i>	Indigofera
<i>Kunzea</i> sp. - <i>Burgan</i> (formerly <i>K. ericoides</i>)	Burgan
<i>Lasiopetalum behrii</i>	Pink Velvet Bus
<i>Leptomeria aphylla</i>	Leafless Currant Bush

Botanical Name	Common Name
<i>Leptospermum continentale</i>	Prickly Tea Tree
<i>Leptospermum lanigerum</i>	Woolly Tea Tree
<i>Leptospermum myrsinoides</i>	Heath Tea Tree
<i>Leptospermum obovatum</i> R	River Tea Tree
<i>Logania albiflora</i>	Narrow Leaf Logania
<i>Melaleuca acuminata</i>	Mallee Honey Myrtle
<i>Melaleuca decussata</i>	Cross-leaf honey myrtle
<i>Melaleuca lanceolata</i> R	Moonah
<i>Melaleuca parvistaminea</i>	Rough-barked Honey Myrtle
<i>Melaleuca uncinata</i>	Broom Honey Myrtle
<i>Melaleuca wilsonii</i>	Violet Honey Myrtle
<i>Melicytus dentatus</i>	Tree Violet
<i>Mirbelia oxylobioides</i>	Mountain Mirbelia
<i>Muehlenbeckia florulenta</i> R	Tangled Lignum
<i>Myoporum montanum</i> R	Waterbush
<i>Myoporum platycarpum</i> R	Sugarwood
<i>Nitraria billardierei</i> R	Dillon Bush
<i>Olearia argophylla</i>	Musk Daisy Bush
<i>Olearia decurrens</i>	Clammy Daisy Bush
<i>Olearia lirata</i>	Snow Daisy Bush
<i>Olearia phlogopappa</i>	Dusty Daisy Bush
<i>Olearia teretifolia</i>	Cypress Daisy Bush
<i>Olearia tubuliflora</i>	Rayless Daisy Bush
<i>Ozothamnus ferrugineus</i>	Tree Everlasting
<i>Ozothamnus obcordatus</i>	Grey Everlasting
<i>Ozothamnus rosmarinifolius</i>	Rosemary Everlasting
<i>Persoonia rigida</i>	Stiff Geebung
<i>Pimelea axiflora</i> subsp. <i>axiflora</i>	Bootlace Bush
<i>Pittosporum angustifolium</i> R	Weeping Pittosporum
<i>Pomaderris aspera</i>	Hazel Pomaderris
<i>Pomaderris paniculosa</i> subsp. <i>paniculosa</i>	Inland Pomaderris
<i>Pomaderris racemosa</i>	Cluster Pomaderris
<i>Pomaderris vacciniifolia</i>	Round-leaf Pomaderris
<i>Prostanthera denticulata</i>	Rough Mint Bush
<i>Prostanthera lasianthos</i> var. <i>lasianthos</i>	Victorian Christmas Bush
<i>Prostanthera nivea</i>	Snowy Mint Bush
<i>Pultenaea daphnoides</i>	Large-leaf Bush Pea
<i>Pultenaea graveolens</i>	Scented Bush Pea
<i>Pultenaea platyphylla</i>	Flat-leaf Bush Pea
<i>Senna artemisioides</i> subsp. <i>coriacea</i> R	Desert Cassia

Botanical Name	Common Name
<i>Senna artemisioides</i> subsp. <i>petiolaris</i>	Woody Cassia
<i>Senna artemisioides</i> subsp. <i>zygophylla</i> R	Desert Cassia
<i>Solanum laciniatum</i>	Kangaroo Apple
<i>Solanum simile</i>	Oondoroo
<i>Spyridium parvifolium</i>	Dusty Miller
<i>Viminaria juncea</i>	Golden Spray
<i>Westringia crassifolia</i>	Whipstick Westringia
<i>Xanthorrhoea glauca</i> subsp. <i>angustifolia</i>	Grass Tree

12.7 Native Trees

(R denotes RURAL SPECIES LIST)

<i>Botanical Name</i>	<i>Common Name</i>	<i>Size h x w</i>	<i>Botanical Name</i>	<i>Common Name</i>	<i>Size h x w</i>
Small-Medium Trees <10m			Large Trees >10m		
<i>Acacia dealbata</i> R	Silver Wattle	5-10 x 3-5m	<i>Acacia salicina</i> R	Native Willow	10-15 x 5-7m
<i>Acacia implexa</i> R	Lightwood	5-10 x 3-5m	<i>Acacia stenophylla</i> R	Eumong	5 -20 x 3-10m
<i>Acacia mearnsii</i>	Late Black Wattle	10 x 5m	<i>Angophora costata</i>	Smooth-barked Apple	15-30 x 8-15
<i>Acacia melanoxylon</i>	Blackwood	10m x 5m	<i>Callitris glaucophylla</i> R	Murray Pine (White Cypress Pine)	3-15 x 2-7m
<i>Acacia pendula</i>	Weeping Boree	5-12 x 3-6m	<i>Callitris gracilis</i>	Slender Cypress Pine	20 x 10m
<i>Allocasuarina littoralis</i>	Black Sheoak	5-15 x 3-8m	<i>Corymbia citriodora</i>	Lemon Scented Gum	20 x 8m
<i>Allocasuarina luehmannii</i> R	Buloke	5-15 x 3-8m	<i>Corymbia maculata</i>	Spotted Gum	30 x 10m
<i>Allocasuarina verticillata</i>	Drooping Sheoak	10 x 5m	<i>Casuarina cristata</i>	Belah	10-20 x 4-8m
<i>Angophora cordifolia</i>	Dwarf Apple Myrtle	7-10 x 4-5m	<i>Eucalyptus albens</i> R	White Box	10-15 x 8-10m
<i>Brachychiton populneus</i> <i>subsp. populneus</i>	Kurrajong	6-15 x 4-8m	<i>Eucalyptus baxteri</i>	Brown Stringybark	20-30 x 8-15m
<i>Brachychiton acerifolius</i> x <i>populneus</i>	Hybrid Flame Tree	8-10 x 4-5m	<i>Eucalyptus behriana</i>	Bull Mallee	10-12 x 5-6m
<i>Bursaria spinosa</i> <i>subsp.</i> <i>spinosa</i> R	Sweet Bursaria	3-10 x 2-5m	<i>Eucalyptus blakelyi</i>	Blakely's Red Gum	20 x 8m
<i>Callitris rhomboidea</i>	Port Jackson Pine	6 x 3m	<i>Eucalyptus camaldulensis</i> R (for natural water areas only)	River Red Gum	30 x 15m
<i>Corymbia ficifolia</i>	Scarlet Flowering Gum	6-10 x 3-5m	<i>Eucalyptus dives</i>	Broad Leaf Peppermint	10-20 x 4-8m
<i>Eucalyptus behriana</i>	Bull Mallee	10-12 x 5-6m	<i>Eucalyptus froggattii</i>	Kamarooka Mallee	5-12 x 4-8m
<i>Eucalyptus caesia</i>	Silver Princess	8 x 4m	<i>Eucalyptus globulus</i> <i>subsp.</i> <i>bicostata</i>	Eurabbie	30-50 x 15-30m
<i>Eucalyptus calycogona</i>	Red Mallee	5 x 4m	<i>Eucalyptus goniocalyx</i>	Long Leaved Box	15 x 7m
<i>Eucalyptus dumosa</i>	Dumosa Mallee	6 x 4m	<i>Eucalyptus largiflorens</i> R	Black Box	20 x 10m
<i>Eucalyptus froggattii</i>	Kamarooka Mallee	5-12 x 4-8m	<i>Eucalyptus leucoxydon</i> <i>subsp.</i> <i>pruinosa</i>	Yellow Gum	20-25 x 10-12m
<i>Eucalyptus leucoxydon</i>	Flowering Gum	9-15 x 5-8	<i>Eucalyptus macrorhyncha</i>	Red Stringy Bark	25-35 x 13-17m
<i>Eucalyptus nortonii</i>	Mealy Bundy	10-15 x 5-7m	<i>Eucalyptus melliodora</i> R	Yellow Box	20-30 x 10-15m
<i>Eucalyptus polybractea</i>	Blue Mallee	8 x 5m	<i>Eucalyptus microcarpa</i> R	Grey Box	20-25 x 10-12m
<i>Eucalyptus viridis</i>	Green Mallee	8 x 5m	<i>Eucalyptus obliqua</i>	Messmate	30-60 x 15-30m
<i>Exocarpos cupressiformis</i> R	Cherry Ballart	8 x 4m	<i>Eucalyptus ovata</i>	Swamp Gum	20 x 10m
<i>Geijera parviflora</i> R	Wilga	10 x 8m	<i>Eucalyptus pauciflora</i> <i>subsp.</i> <i>pauciflora</i>	Snow Gum	20-30 x 10-15m
<i>Hakea tephrosperma</i> R	Hooked Needlewood	5-8 x 3-4m	<i>Eucalyptus polyanthemos</i>	Red Box	20-40 x 10-15m
<i>Hymenosporum flavum</i>	Native frangipani	8-18 x 4-8m	<i>Eucalyptus radiata</i>	Narrow-leaved peppermint	30-40 x 12-15m
<i>Melaleuca lanceolata</i> R	Moonah		<i>Eucalyptus rubida</i>	Candlebark	25-35 x 10-15m
<i>Melaleuca uncinata</i>	Broom Honey Myrtle	5-8 x 3-4m	<i>Eucalyptus salmonophloia</i>	Salmon Gum	20-30 x 20-15m
<i>Myoporum platycarpum</i> R	Sugarwood	5-10 x 3-5m	<i>Eucalyptus tricarpa</i>	Red Ironbark	25-35 x 10-15m
<i>Santalum acuminatum</i> R	Sweet Quandong	5 x 4m	<i>Eucalyptus viminalis</i>	Manna Gum	20-35 x 10-13m
<i>Tristaniopsis laurina</i>	Water Gum	8-15 x 4-8m	<i>Hymenosporum flavum</i>	Native Frangipani	8-18 x 4-8m
			<i>Stenocarpus sinuatus</i>	Firewheel tree	15-20 x

12.8 Exotic trees

<i>Botanical Name</i>	<i>Common Name</i>	<i>Size h x w</i>
Small-Medium Trees <10m		
<i>Acer buergeranum</i>	Trident Maple	5 x 3m
<i>Acer campestre</i>	Hedge Maple	7 x 6m
<i>Acer negundo</i> 'Sensation'	Sensational Box Elder	9 x 6m
<i>Arbutus unedo</i>	Strawberry Tree	7 x 5m
<i>Calodendrum capense</i>	Cape Chestnut	10 x 6m
<i>Gleditsia triacanthos</i> var. <i>inermis</i> 'Shademaster'	Green Honey Locust	9-12 x 8-10m
<i>Koelreuteria paniculata</i>	Golden Rain Tree	5 x 8m
<i>Malus X floribunda</i>	Japanese Flowering crab	6 x 4m
<i>Malus ioensis</i> 'Plena'	Betchel crab apple	4 x 3m
<i>Malus spectabilis</i>	Chinese crab	8 x 4m
<i>Nyssa sylvatica</i>	Tupelo	9-11 x 6m
<i>Lagerstroemia spp.</i>	Crepe Myrtle	3-10 x 3-8m
<i>Pistacia chinensis</i>	Chinese Pistachio	8 x 6m
<i>Prunus x blierea</i>	Double Flowering Pum	4 x 4m
<i>Pyrus calleryana</i> 'Aristocrat'	Ornamental Pear	10 x 7m

<i>Botanical Name</i>	<i>Common Name</i>	<i>Size h x w</i>
Large Trees >10m		
<i>Acer x freemanii</i> 'Jefferson Red'	Jefferson Red	13-15 x 5-7m
<i>Acer saccharinum</i>	Silver Maple	12-15 x 10m
<i>Gleditsia triacanthos</i> var. <i>inermis</i> 'Shademaster'	Green Honey Locust	9-12 x 8-10m
<i>Jacaranda mimosifolia</i>	Jacaranda	10 x 8m
<i>Liriodendron tulipifera</i>	Tulip Tree	15 x 15m
<i>Liquidamber styraciflua</i>	Liquidamber	20 x 6m
<i>Magnolia grandiflora</i>	Bull Bay Magnolia	25 x 10m
<i>Platanus (orientalis) X 'Chilensis'</i>	Plane	18 x 8m
<i>Platanus orientalis</i> 'Digitata'	Cut Leaf Plane	18 x 10m
<i>Quercus cerris</i>	Turkey Oak	20 x 15m
<i>Quercus coccinea</i>	Scarlet Oak	12-20 x 8-10m
<i>Quercus palustris</i>	Pin Oak	15 x 8m
<i>Quercus robur</i>	English Oak	20 x 20m
<i>Ulmus glabra</i> 'Lutescens'	Golden Elm	10-12 x 10-12m
<i>Ulmus parvifolia</i> 'Todd'	Chinese Elm	10-12 x 10-11m
<i>Sophora japonica</i>	Japanese Pagoda	12-15 x 10m
<i>Zelkova serrata</i> 'Green Vase'	Japanese Zelkova	14 x 10m

NOTE: Refer to Greater Shepparton City Council Street Tree Master Plan for precinct plans. Approval of alternative Tree Species will be at the discretion of Council.

Tree species selections are to be discussed with relevant Council officers to ensure the selections are *the right tree for the right location*

12.9 Aquatic Plants

<i>Botanical Name</i>	<i>Common Name</i>
Aquatic	
Submerged Marsh (0.4 -0.9m below TWL)	
<i>Potamogeton ochreatus</i>	Blunt Pondweed
<i>Potamogeton tricarlinatus</i>	Floating Pondweed
<i>Triglochin procera (T. procerum)</i>	Water Ribbons
Deep Marsh (0.2 - 0.4m below TWL)	
<i>Baumea articulata</i>	Jointed Twig-rush
<i>Eleocharis sphacelata</i>	Tall Spike Rush
<i>Myriophyllum papillosum</i>	Robust Milfoil
<i>Nymphoides crenata</i>	Wavy Marshwort
<i>Ottelia ovalifolia</i>	Swamp Lily
<i>Potamogeton ochreatus</i>	Blunt Pondweed
<i>Potamogeton tricarlinatus</i>	Floating Pondweed
<i>Schoenoplectus tabernaemontani</i>	Grey Club-rush
<i>Triglochin procera (T. procerum)</i>	Water Ribbons
Shallow Marsh (0 - 0.2m below TWL)	
<i>Alisma plantago-aquatica</i>	Common water plantain
<i>Amphibromus nervosus</i>	Common Swamp Wallaby Grass
<i>Bolboschoenus caldwellii</i>	Marsh Club-rush
<i>Cyperus exaltatus</i>	Tall Flat-sedge
<i>Eleocharis acuta</i>	Common Spike-rush
<i>Juncus amabilis</i>	Gentle Rush
<i>Juncus flavidus</i>	Rush
<i>Juncus holoschoenus</i>	Joint-leaved Rush
<i>Juncus semisolidus</i>	Rush
<i>Marsilea costulifera</i>	Narrow-leaf Nardoo
<i>Marsilea drummondii</i>	Common Nardoo
<i>Marsilea hirsuta</i>	Short Fruit Nardoo
<i>Myriophyllum crispatum</i>	Upright Water-milfoil
<i>Myriophyllum papillosum</i>	Robust Milfoil
<i>Nymphoides crenata</i>	Wavy Marshwort
<i>Persicaria decipiens</i>	Slender Knotweed
<i>Persicaria hydropiper</i>	Water Pepper
<i>Ranunculus inundatus</i>	River Buttercup
<i>Triglochin procera (T. procerum)</i>	Water Ribbons
Ephemeral Marsh (Temporary inundation)	
<i>Brachyscome basaltica</i>	Swamp Daisy
<i>Carex appressa</i>	Tall Sedge
<i>Carex inversa</i>	Knob Sedge

<i>Botanical Name</i>	<i>Common Name</i>
<i>Carex tereticaulis</i>	Rush Sedge
<i>Crassula helmsii</i>	Swamp Crassula
<i>Dichondra repens</i>	Kidney-weed
<i>Eleocharis acuta</i>	Common Spike-rush
<i>Eryngium ovium</i>	Blue Devil
<i>Isolepis inundata</i>	Swamp Club Rush
<i>Juncus flavidus</i>	Rush
<i>Juncus usitatus</i>	Common Rush
<i>Lythrum salicaria</i>	Purple Loosestrife
<i>Mentha australis</i>	River Mint
<i>Mentha diemenica</i>	Slender Mint
<i>Mentha satuireioides</i>	Creeping Mint
<i>Mimulus gracilis</i>	Slender Monkey Flower
<i>Paspalidium jubiflorum</i>	Warrego Summer-grass
<i>Pycnosorus globosus</i>	Slender Knotweed
<i>Poa labillardieri</i>	Tussock Grass
<i>Pycnosaurus globosus</i>	Drumstick Billy Buttons
<i>Triglochin striatum</i>	Streaked Arrow-grass
<i>Wahlenbergia fluminalis</i>	River Bluebell
Wetland margin (capillary action)	
<i>Brachyscome basaltica</i>	Swamp Daisy
<i>Calocephalus citreus</i>	Lemon Beauty Heads
<i>Calotis anthemoides</i>	Cut-leaf Burr-daisy
<i>Calotis scapigera</i>	Tufted Burr-daisy
<i>Carex appressa</i>	Tall Sedge
<i>Carex inversa</i>	Knob Sedge
<i>Carex tereticaulis</i>	Rush Sedge
<i>Chloris truncata</i>	Windmill Grass
<i>Dianella revoluta</i>	Black-anther Flax-lily
<i>Einadia nutans</i>	Nodding Saltbush
<i>Enchylaena tomentosa</i>	Ruby Saltbush
<i>Eryngium ovium</i>	Blue Devil
<i>Juncus usitatus</i>	Common Rush
<i>Lythrum salicaria</i>	Purple Loosestrife
<i>Mentha diemenica</i>	Slender Mint
<i>Paspalidium jubiflorum</i>	Warrego Summer-grass
<i>Poa labillardieri</i>	Tussock Grass
<i>Pycnosaurus globosus</i>	Drumstick Billy Buttons
<i>Rytidosperma caespitosum</i>	Ringed Wallaby Grass
<i>Rytidosperma setaceum</i>	Smallflower Wallaby Grass
<i>Themeda triandra</i>	Kangaroo Grass

