

# The Museum of Modern Art

## Henri Matisse: The Cut-Outs

The Museum of Modern Art, New York, October 12, 2014–February 08, 2015



HENRI MATISSE (French, 1869–1954)

*The Dance (La Danse)*

1938

Maquette for a lithographic reproduction for the journal *Verve* 1, no. 4 (1938)

Gouache on paper, cut and pasted, and ink

19 1/8 x 24 3/16" (48.5 x 61.5 cm)

The Perl Collection



HENRI MATISSE (French, 1869–1954)

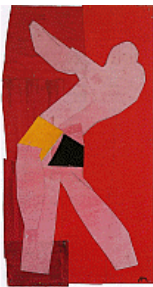
*Two Dancers (Deux Danseurs)*

1937–38

Stage curtain design for the ballet *Rouge et Noir*

Gouache on paper, cut and pasted, notebook papers, pencil, and thumbtacks  
31 9/16 x 25 3/8" (80.2 x 64.5 cm)

Musée national d'art moderne/Centre de création industrielle, Centre Georges Pompidou, Paris. Dation, 1991



HENRI MATISSE (French, 1869–1954)

*Small Dancer on Red Background (Petit Danseur sur fond rouge)*

1937–38

Gouache on paper, cut and pasted

23 1/2 x 18 1/4" (59.7 x 46.4 cm)

Private collection, Houston, Texas



HENRI MATISSE (French, 1869–1954)

*Dancer (Le Danseur)*

1937–38

Gouache and pencil on paper, cut and pasted

29 1/2 x 24 1/2" (74.9 x 62.2 cm)

Private collection



HENRI MATISSE (French, 1869–1954)

*Two Dancers (Deux Danseurs)*

1937–38

Stage curtain design for the ballet *Rouge et Noir*

Gouache on paper, cut and pasted, mounted on board  
24 13/16 x 25 3/8" (63 x 64.5 cm)

Private collection



HENRI MATISSE (French, 1869–1954)  
*Still Life with Shell (Nature morte au coquillage)*  
1940  
Gouache, colored pencil, and charcoal on cut paper, and string,  
pinned to canvas  
32 7/8 × 45 1/4" (83.5 × 115 cm)  
Private collection



HENRI MATISSE (French, 1869–1954)  
*The Dance (La Danse)*  
1931–33  
Study for the Barnes Mural (Paris version)  
Gouache and pencil on paper  
11 x 29 7/8" (27.9 x 75.9 cm)  
The Metropolitan Museum of Art. The Pierre and Maria-Gaetana Matisse  
Collection, 2002



UNKNOWN PHOTOGRAPHER  
Photograph of the Barnes mural in progress  
1931  
Gelatin silver print  
5 1/8 × 7" (13 × 17.8 cm)  
Barnes Foundation Archives, Merion



UNKNOWN PHOTOGRAPHER  
Photograph of the Barnes mural in progress  
1931  
Gelatin silver print  
5 1/8 × 7" (13 × 17.8 cm)  
Barnes Foundation Archives, Merion



UNKNOWN PHOTOGRAPHER  
Photograph of the Barnes mural in progress  
1931  
Gelatin silver print  
5 1/8 × 7" (13 × 17.8 cm)  
Barnes Foundation Archives, Merion



UNKNOWN PHOTOGRAPHER  
Photograph of the Barnes mural in progress  
1931  
Gelatin silver print  
5 1/8 × 6 7/8" (13 × 17.5 cm)  
Barnes Foundation Archives, Merion



UNKNOWN PHOTOGRAPHER  
Photograph of the Barnes mural in progress  
1931  
Gelatin silver print  
5 1/8 × 6 3/4" (13 × 17.1 cm)  
Barnes Foundation Archives, Merion



UNKNOWN PHOTOGRAPHER  
Photograph of the Barnes mural in progress  
1931  
Gelatin silver print  
5 1/8 × 6 7/8" (13 × 17.5 cm)  
Barnes Foundation Archives, Merion



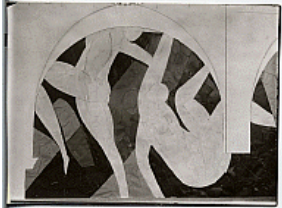
UNKNOWN PHOTOGRAPHER  
Photograph of the Barnes mural in progress  
1931  
Gelatin silver print  
5 1/8 × 6 7/8" (13 × 17.5 cm)  
Barnes Foundation Archives, Merion



UNKNOWN PHOTOGRAPHER  
Photograph of the Barnes mural in progress  
1931  
Gelatin silver print  
9 3/8 × 11 7/8" (23.8 × 30.2 cm)  
Barnes Foundation Archives, Merion



UNKNOWN PHOTOGRAPHER  
Photograph of the Barnes mural in progress  
1931  
Gelatin silver print  
9 1/4 × 11 3/4" (23.5 × 29.8 cm)  
Barnes Foundation Archives, Merion



UNKNOWN PHOTOGRAPHER  
Photograph of the Barnes mural in progress  
March 8, 1932  
Gelatin silver print  
5 1/8 × 6 7/8" (13 × 17.5 cm)  
Barnes Foundation Archives, Merion



UNKNOWN PHOTOGRAPHER  
Photograph of the Barnes mural in progress  
March 8, 1932  
Gelatin silver print  
5 1/8 × 6 7/8" (13 × 17.5 cm)  
Barnes Foundation Archives, Merion



UNKNOWN PHOTOGRAPHER  
Photograph of the Barnes mural in progress  
March 8, 1932  
Gelatin silver print  
5 1/8 × 6 7/8" (13 × 17.5 cm)  
Barnes Foundation Archives, Merion



HENRI MATISSE (French, 1869–1954)  
*The Fall of Icarus (La Chute d'Icare)*  
1943  
Gouache on paper, cut and pasted, and pins  
13 3/4 × 10 5/8" (35 × 27 cm)  
Private collection



HENRI MATISSE (French, 1869–1954)  
*The Clown (Le Clown)*  
1943  
Maquette for plate I from the illustrated book *Jazz* (1947)  
Gouache on paper, cut and pasted, mounted on canvas  
26 7/16 x 19 15/16" (67.2 x 50.7 cm)  
Musée national d'art moderne/Centre de création industrielle, Centre Georges Pompidou, Paris. *Dation*, 1985



HENRI MATISSE (French, 1869–1954)  
*The Circus (Le Cirque)*  
1943  
Maquette for plate II from the illustrated book *Jazz* (1947)  
Gouache on paper, cut and pasted, and mounted on canvas  
17 13/16 x 26 7/16" (45.2 x 67.1 cm)  
Musée national d'art moderne/Centre de création industrielle, Centre Georges Pompidou, Paris. *Dation*, 1985



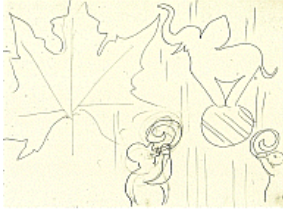
HENRI MATISSE (French, 1869–1954)  
*Monsieur Loyal*  
1943  
Maquette for plate III from the illustrated book *Jazz* (1947)  
Gouache on paper, cut and pasted, mounted on canvas  
21 9/16 x 16 13/16" (54.7 x 42.7 cm)  
Musée national d'art moderne/Centre de création industrielle, Centre Georges Pompidou, Paris. *Dation*, 1985



HENRI MATISSE (French, 1869–1954)  
*The Nightmare of the White Elephant (Le Cauchemar de l'éléphant blanc)*  
1943  
Maquette for plate IV from the illustrated book *Jazz* (1947)  
Gouache on paper, cut and pasted, mounted on canvas  
17 5/16 x 26 1/4" (43.9 x 66.7 cm)  
Musée national d'art moderne/Centre de création industrielle, Centre Georges Pompidou, Paris. *Dation*, 1985



HENRI MATISSE (French, 1869–1954)  
*Circus Scene (Scène de cirque)*  
1943  
Study for *The Nightmare of the White Elephant* from the illustrated book *Jazz* (1947)  
Pencil on paper  
11 1/8 x 15 1/8" (28.3 x 38.4 cm)  
Private collection



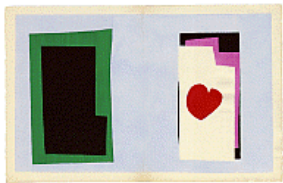
HENRI MATISSE (French, 1869–1954)  
*Circus Scene (Scène de cirque)*  
1943  
Study for *The Nightmare of the White Elephant* from the illustrated book *Jazz* (1947)  
Pencil on paper  
11 × 15" (27.9 × 38.1 cm)  
Pierre and Tana Matisse Foundation, New York



HENRI MATISSE (French, 1869–1954)  
*The Horse, the Rider, and the Clown (Le Cheval, l'écuyère et le clown)*  
1943  
Maquette for plate V from the illustrated book *Jazz* (1947)  
Gouache on paper, cut and pasted, mounted on canvas  
16 3/4 × 25 13/16" (42.5 × 65.6 cm)  
Musée national d'art moderne/Centre de création industrielle, Centre Georges Pompidou, Paris. *Dation*, 1985



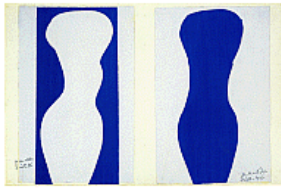
HENRI MATISSE (French, 1869–1954)  
*The Wolf (Le Loup)*  
1944  
Maquette for plate VI from the illustrated book *Jazz* (1947)  
Gouache on paper, cut and pasted, mounted on canvas  
17 11/16 × 26 7/16" (45 × 67.1 cm)  
Musée national d'art moderne/Centre de création industrielle, Centre Georges Pompidou, Paris. *Dation*, 1985



HENRI MATISSE (French, 1869–1954)  
*The Heart (Le Coeur)*  
1943  
Maquette for plate VII from the illustrated book *Jazz* (1947)  
Gouache on paper, cut and pasted, mounted on canvas  
17 1/2 × 26 1/2" (44.5 × 67.3 cm)  
Musée national d'art moderne/Centre de création industrielle, Centre Georges Pompidou, Paris. *Dation*, 1985



HENRI MATISSE (French, 1869–1954)  
*Icarus (Icare)*  
1943?–44  
Maquette for plate VIII from the illustrated book *Jazz* (1947)  
Gouache on paper, cut and pasted, mounted on canvas  
17 1/16 × 13 7/16" (43.4 × 34.1 cm)  
Musée national d'art moderne/Centre de création industrielle, Centre Georges Pompidou, Paris. *Dation*, 1985



HENRI MATISSE (French, 1869–1954)

*Forms (Formes)*

1944

Maquette for plate IX from the illustrated book *Jazz* (1947)

Gouache on paper, cut and pasted, mounted on canvas

17 7/16 x 26 7/16" (44.3 x 67.1 cm)

Musée national d'art moderne/Centre de création industrielle, Centre Georges Pompidou, Paris. *Dation*, 1985



HENRI MATISSE (French, 1869–1954)

*Pierrot's Funeral (L'Enterrement de Pierrot)*

1943–44?

Maquette for plate X from the illustrated book *Jazz* (1947)

Gouache on paper, cut and pasted, mounted on canvas

17 1/2 x 26" (44.5 x 66 cm)

Musée national d'art moderne/Centre de création industrielle, Centre Georges Pompidou, Paris. *Dation*, 1985



HENRI MATISSE (French, 1869–1954)

*The Codomas (Les Codomas)*

1943

Maquette for plate XI from the illustrated book *Jazz* (1947)

Gouache on paper, cut and pasted, mounted on canvas

17 1/8 x 26 7/16" (43.5 x 67.1 cm)

Musée national d'art moderne/Centre de création industrielle, Centre Georges Pompidou, Paris. *Dation*, 1985



HENRI MATISSE (French, 1869–1954)

*The Swimmer in the Tank (La Nageuse dans l'aquarium)*

1944

Maquette for plate XII from the illustrated book *Jazz* (1947)

Gouache on paper, cut and pasted, mounted on canvas

17 3/8 x 26" (44.2 x 66 cm)

Musée national d'art moderne/Centre de création industrielle, Centre Georges Pompidou, Paris. *Dation*, 1985



HENRI MATISSE (French, 1869–1954)

*The Sword Swallower (L'Avaleur de sabres)*

1943

Maquette for plate XIII from the illustrated book *Jazz* (1947)

Gouache on paper, cut and pasted, mounted on canvas

17 1/16 x 13 1/2" (43.3 x 34.3 cm)

Musée national d'art moderne/Centre de création industrielle, Centre Georges Pompidou, Paris. *Dation*, 1985



HENRI MATISSE (French, 1869–1954)

*The Cowboy (Le Cow-Boy)*

1943

Maquette for plate XIV from the illustrated book *Jazz* (1947)

Gouache on paper, cut and pasted, mounted on canvas

16 15/16 x 26 3/4" (43 x 68 cm)

Musée national d'art moderne/Centre de création industrielle, Centre Georges Pompidou, Paris. *Dation*, 1985



HENRI MATISSE (French, 1869–1954)

*The Knife Thrower (Le Lanceur de couteaux)*

1943–44

Maquette for plate XV from the illustrated book *Jazz* (1947)

Gouache on paper, cut and pasted, mounted on canvas

17 1/16 x 26 9/16" (43.3 x 67.5 cm)

Musée national d'art moderne/Centre de création industrielle, Centre Georges Pompidou, Paris. *Dation*, 1985



HENRI MATISSE (French, 1869–1954)

*Destiny (Le Destin)*

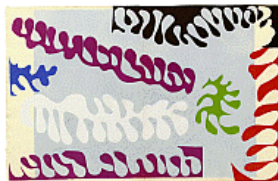
1944

Maquette for plate XVI from the illustrated book *Jazz* (1947)

Gouache on paper, cut and pasted, mounted on canvas

17 9/16 x 26 7/16" (44.6 x 67.1 cm)

Musée national d'art moderne/Centre de création industrielle, Centre Georges Pompidou, Paris. *Dation*, 1985



HENRI MATISSE (French, 1869–1954)

*The Lagoon (Le Lagon)*

1944

Maquette for plate XVII from the illustrated book *Jazz* (1947)

Gouache on paper, cut and pasted, mounted on canvas

17 5/16 x 26 1/8" (44 x 66.3 cm)

Musée national d'art moderne/Centre de création industrielle, Centre Georges Pompidou, Paris. *Dation*, 1985



HENRI MATISSE (French, 1869–1954)

*The Lagoon (Le Lagon)*

1944

Maquette for plate XVIII from the illustrated book *Jazz* (1947)

Gouache on paper, cut and pasted, mounted on canvas

17 3/16 x 26 7/16" (43.6 x 67.1 cm)

Musée national d'art moderne/Centre de création industrielle, Centre Georges Pompidou, Paris. *Dation*, 1985





HENRI MATISSE (French, 1869–1954)  
*The Lagoon (Le Lagon)*  
1944  
Maquette for plate XIX from the illustrated book *Jazz* (1947)  
Gouache on paper, cut and pasted, mounted on canvas  
17 5/16 x 26 7/16" (44 x 67.1 cm)  
Musée national d'art moderne/Centre de création industrielle, Centre Georges Pompidou, Paris. *Dation*, 1985



HENRI MATISSE (French, 1869–1954)  
*The Toboggan (Le Toboggan)*  
1943  
Maquette for plate XX from the illustrated book *Jazz* (1947)  
Gouache on paper, cut and pasted, mounted on canvas  
24 7/8 x 21" (63.2 x 53.3 cm)  
Musée national d'art moderne/Centre de création industrielle, Centre Georges Pompidou, Paris. *Dation*, 1985



HENRI MATISSE (French, 1869–1954)  
*Jazz*  
published 1947  
Illustrated book with twenty *pochoir* plates and text in gravure  
page (each irreg.): 16 9/16 x 12 11/16" (42 x 32.2 cm); overall (closed): 16 11/16 x 13 x 1 3/4" (42.4 x 33 x 4.4 cm)  
Publisher: Tériade, Paris  
Printer of plates: Edmond Vairel  
Printer of text: Draeger Frères, Paris  
Edition: 250  
The Museum of Modern Art, New York. Louis E. Stern Collection, 1964



HENRI MATISSE (French, 1869–1954)  
Calligraphic study for the illustrated book *Jazz* (1947)  
c. 1946  
Ink on paper  
16 9/16 x 12 5/8" (42 x 32 cm)  
Pierre and Tana Matisse Foundation, New York



HENRI MATISSE (French, 1869–1954)  
Calligraphic study for the illustrated book *Jazz* (1947)  
c. 1946  
Ink on paper  
16 9/16 x 12 5/8" (42 x 32 cm)  
Pierre and Tana Matisse Foundation, New York



HENRI MATISSE (French, 1869–1954)  
Calligraphic study for the illustrated book *Jazz* (1947)  
c. 1946  
Ink on paper  
16 9/16 × 12 5/8" (42 × 32 cm)  
Pierre and Tana Matisse Foundation, New York



HENRI MATISSE (French, 1869–1954)  
Calligraphic study for the illustrated book *Jazz* (1947)  
c. 1946  
Ink on paper  
16 9/16 × 12 5/8" (42 × 32 cm)  
Pierre and Tana Matisse Foundation, New York



HENRI MATISSE (French, 1869–1954)  
Cover maquette for the journal *Cahiers d'Art* no. 3-5 (1936)  
1936  
Gouache on paper, cut and pasted, and ink on paper  
12 15/16 × 21 1/4" (32.8 × 54 cm)  
Staatliche Museen zu Berlin, Nationalgalerie, Museum Berggruen



HENRI MATISSE (French, 1869–1954)  
*Présages*. Cover maquette for the journal *Verve* 1, no. 1 (1937)  
1937  
Gouache on paper, cut and pasted, and ink  
14 3/8 × 21 7/8" (36.5 × 55.5 cm)  
Hilti Art Foundation, Schaan, Liechtenstein



HENRI MATISSE (French, 1869–1954)  
*Chromatic Symphony (Symphonie chromatique)*. Cover maquette for the journal *Verve* 2, no. 8 (1940)  
1939  
Colored papers, cut and pasted, on paper  
13 7/8 × 21 3/4" (35.2 × 55.3 cm)  
Hilti Art Foundation, Schaan, Liechtenstein



HENRI MATISSE (French, 1869–1954)  
*Verve* 2, no. 8  
1940  
14 3/8 × 10 3/4" (36.5 × 27.3 cm)  
The Museum of Modern Art Library



HENRI MATISSE (French, 1869–1954)  
Cover maquette for the journal *Verve* 4, no. 13 (1945)  
1943  
Gouache on paper, cut and pasted, mounted on canvas  
15 × 22 3/8" (38.1 × 56.8 cm)  
Private collection, on loan to Staatliche Museen zu Berlin, Nationalgalerie,  
Museum Berggruen



HENRI MATISSE (French, 1869–1954)  
*Verve* 4, no. 13  
1945  
14 3/8 × 10 1/2" (36.5 × 26.7 cm)  
The Museum of Modern Art Library



HENRI MATISSE (French, 1869–1954)  
Cover maquette for the journal *Verve* 6, no. 21–22 (1948)  
1948  
Gouache on paper, cut and pasted  
14 3/16 × 21 1/4" (36 × 54 cm)  
Private collection



HENRI MATISSE (French, 1869–1954)  
Cover maquette for the journal *Verve* 9, no. 35–36 (1958)  
c. 1954  
Gouache on paper, cut and pasted  
14 1/8 × 21 5/8" (35.9 × 54.9 cm)  
Private collection



HENRI MATISSE (French, 1869–1954)

*Oceania, the Sky (Océanie le ciel)*

1946

(realized as silkscreen 1946)

Gouache on paper, cut and pasted, on paper, mounted on canvas  
70 3/16 x 145 9/16" (178.3 x 369.7 cm)

Musée départemental Matisse, Le Cateau-Cambrésis. Gift of the Matisse family, 2004



HENRI MATISSE (French, 1869–1954)

*Oceania, the Sea (Océanie la mer)*

1946

(realized as silkscreen 1946)

Gouache on paper, cut and pasted, on paper, mounted on canvas  
70 1/4 x 154 5/8" (178.5 x 392.8 cm)

Musée départemental Matisse, Le Cateau-Cambrésis. Gift of the Matisse family, 2004



HENRI MATISSE (French, 1869–1954)

*Ascher Square "A"*

1947

Screenprint on silk

36 x 36" (91.4 x 91.4 cm)

Printer: Zika Ascher, London

The Ascher Family Collection



HENRI MATISSE (French, 1869–1954)

*Ascher Square "B"*

1947

Screenprint on silk

36 x 36" (91.4 x 91.4 cm)

Printer: Zika Ascher, London

The Ascher Family Collection



HENRI MATISSE (French, 1869–1954)  
*Les Miroirs profonds*  
 1947  
 9 3/4 × 8 1/16" (24.7 × 20.5 cm)  
 Fondation Marguerite et Aimé Maeght, Saint-Paul, France



HENRI MATISSE (French, 1869–1954)  
*Pierre à Feu (Flint Stone)*. Cover maquette for the book *Les Miroirs profonds*  
 1945  
 Gouache on paper, cut and pasted, and ink  
 9 13/16 x 16 1/8" (25 x 41 cm)  
 Fondation Marguerite et Aimé Maeght, Saint-Paul, France



HENRI MATISSE (French, 1869–1954)  
*Pierre à feu (Flint Stone)*. Alternate cover design for the book *Les Miroirs profonds* (1947)  
 1945  
 Gouache on paper, cut and pasted, and pencil  
 9 3/4 × 16 3/4" (24.8 × 42.5 cm)  
 Private collection



HENRI MATISSE (French, 1869–1954)  
 Study for *Pierre à Feu (Flint Stone)*  
 1945  
 Pencil on paper  
 10 5/8 × 8 5/16" (27 × 21.1 cm)  
 Private collection



HENRI MATISSE (French, 1869–1954)  
*The Propeller (L'Hélice)*  
late 1945–early 1946  
Gouache on paper, cut and pasted  
20 11/16 x 15 15/16" (52.5 x 40.5 cm)  
Pierre and Tana Matisse Foundation, New York



HENRI MATISSE (French, 1869–1954)  
*Ace of Clubs (As de trèfle)*  
1945–46  
Gouache on paper, cut and pasted  
21 1/8 x 16 5/16" (53.7 x 41.4 cm)  
Private collection



HENRI MATISSE (French, 1869–1954)  
*The Sails (Les Voiles)*  
1945–46  
Gouache on paper, cut and pasted  
20 3/4 x 15 7/8" (52.7 x 40.4 cm)  
Private collection



HENRI MATISSE (French, 1869–1954)  
*Composition (Red Circle with Four Black Triangles on Green Background)*  
*(Composition [cercle rouge aux quatre triangles noirs sur fond vert])*  
1945–46  
Gouache on paper, cut and pasted  
20 11/16 x 15 15/16" (52.5 x 40.5 cm)  
Private collection



HENRI MATISSE (French, 1869–1954)  
*The Lyre (La Lyre)*  
1946  
Gouache on paper, cut and pasted  
12 7/16 x 9 1/8" (31.6 x 23.2 cm)  
Private collection



HENRI MATISSE (French, 1869–1954)  
*White Alga on Red and Green Background (Algue blanche sur fond rouge et vert)*  
1947  
Gouache on paper, cut and pasted  
20 11/16 x 15 15/16" (52.5 x 40.5 cm)  
Fondation Beyeler, Riehen/Basel, Beyeler Collection



HENRI MATISSE (French, 1869–1954)  
*Panel with Mask (Le Panneau au masque)*  
1947  
Gouache on paper, cut and pasted, on paper  
43 5/16 x 20 7/8" (110 x 53 cm)  
Designmuseum Danmark



HENRI MATISSE (French, 1869–1954)  
*The Eskimo (L'Esquimau)*  
1947  
Gouache on paper, cut and pasted, on paper  
15 15/16 x 33 7/8" (40.5 x 86 cm)  
Designmuseum Danmark



HENRI MATISSE (French, 1869–1954)  
*Composition, Black and Red (Composition, noir et rouge)*  
1947  
Gouache on paper, cut and pasted  
16 x 20 3/4" (40.6 x 52.7 cm)  
Davis Museum and Cultural Center, Wellesley College, Wellesley, MA. Gift of Professor and Mrs. John McAndrew



HENRI MATISSE (French, 1869–1954)  
*Amphitrite*  
1947  
Gouache on paper, cut and pasted  
33 11/16 x 27 9/16" (85.5 x 70 cm)  
Private collection



HENRI MATISSE (French, 1869–1954)  
*Composition with Red Cross (Composition à la croix rouge)*  
1947  
Gouache on paper, cut and pasted  
29 3/16 x 20 5/8" (74.1 x 52.4 cm)  
Private collection



HENRI MATISSE (French, 1869–1954)  
*Composition, Yellow, Blue and Black (Composition jaune, bleu et noir)*  
1947  
Gouache on paper, cut and pasted  
18 1/2 x 13 3/8" (47 x 34 cm)  
Private collection



HENRI MATISSE (French, 1869–1954)  
*White Alga on Orange and Red Background (Algue blanche sur fond orange et rouge)*  
1947  
Gouache on paper, cut and pasted  
20 11/16 x 15 15/16" (52.5 x 40.5 cm)  
Mr. and Mrs. Donald B. Marron, New York



HENRI MATISSE (French, 1869–1954)  
*Two Masks (The Tomato) (Deux masques [La Tomate])*  
1947  
Gouache on paper, cut and pasted  
18 3/4 x 20 3/8" (47.7 x 51.8 cm)  
Mr. and Mrs. Donald B. Marron, New York



HENRI MATISSE (French, 1869–1954)  
*Flowering Tree (Mural Scroll) (Arbre en fleur)*  
1948  
Maquette for silkscreen (realized 1949)  
Gouache on paper, cut and pasted, mounted on board  
20 1/2 x 25 1/2" (52.1 x 64.8 cm)  
Private collection, courtesy of Lefevre Fine Art, London





HENRI MATISSE (French, 1869–1954)

*Composition (The Velvets) (Composition [Les Velours])*

1947

Gouache on paper, cut and pasted

20 1/4 x 85 5/8" (51.5 x 217.5 cm)

Kunstmuseum Basel. Acquired with support from Dr. Richard Doetsch-Benziger, Basel, and Marguerite Hagenbach, Basel, 1954



HENRI MATISSE (French, 1869–1954)

*Composition Green Background (Composition fond vert)*

1947

Gouache on paper, cut and pasted, and pencil

41 x 15 7/8" (104.1 x 40.3 cm)

The Menil Collection, Houston



HENRI MATISSE (French, 1869–1954)

*Alga on Green Background (Algue sur fond vert)*

1947

Gouache on paper, cut and pasted

9 3/4 x 5 3/4" (24.7 x 14.6 cm)

Pierre and Tana Matisse Foundation, New York



HENRI MATISSE (French, 1869–1954)

*Black Boxer (Boxeur nègre)*

1947

Gouache on paper, cut and pasted

12 5/8 x 10 1/16" (32 x 25.5 cm)

Private collection, New York



HENRI MATISSE (French, 1869–1954)

*Screen Panel, Beige Background (Feuille de paravent, fond beige)*

1947

Gouache on paper, cut and pasted

63 3/4 x 21 1/16" (162 x 53.5 cm)

Private collection



HENRI MATISSE (French, 1869–1954)  
*Composition (Tahitian Harmony) (Composition [Harmonie tahitienne])*  
1945–46  
Gouache on paper, cut and pasted  
22 1/4 × 14 3/8" (56.5 × 36.5 cm)  
Property of an Italian Private Collection



HENRI MATISSE (French, 1869–1954)  
*Black and Violet Arabesques on Orange Background (Arabesques noires et violettes sur fond orange)*  
1947  
Gouache on paper, cut and pasted  
15 3/4 × 10 7/16" (40 × 26.5 cm)  
Collection Howard and Nancy Marks



HENRI MATISSE (French, 1869–1954)  
*Leaf Motif (Motif-feuille)*  
c. 1948  
Maquette for scarf (realized c. 1948)  
Gouache and ink on paper, cut and pasted  
13 3/8 × 7 11/16" (34 × 19.5 cm)  
Pierre and Tana Matisse Foundation, New York



HENRI MATISSE (French, 1869–1954)  
*Palmette (Feuille violet sur fond orange)*  
c. 1947  
Gouache on paper, cut and pasted  
28 x 21" (71.1 x 53.3 cm)  
Mr. and Mrs. Donald B. Marron, New York



HENRI MATISSE (French, 1869–1954)  
*The Four Rosettes with Blue Motifs (Les Quatres Rosaces aux motifs bleus)*  
1949–50  
Gouache on paper, cut and pasted  
14 15/16 × 21 1/4" (38 × 54 cm)  
Collection of Mr. Julian Robertson



HENRI MATISSE (French, 1869–1954)  
Painted paper sample reference set  
c. 1947–54  
Gouache on paper, 79 pieces  
Dimensions variable  
The Museum of Modern Art, New York. Gift of the Matisse family, 2014



HENRI MATISSE (French, 1869–1954)  
Color samples for *The Sheaf (La Gerbe)*  
1953  
Gouache on paper, nine sheets  
Dimensions variable  
Los Angeles County Museum of Art. Gift of Frances L. Brody



HENRI MATISSE (French, 1869–1954)  
*The Japanese Mask (Le Masque japonais)*  
early 1950  
Gouache on paper, cut and pasted  
31 5/16 x 19 1/2" (79.5 x 49.5 cm)  
Private collection



HENRI MATISSE (French, 1869–1954)  
*The Thousand and One Nights (Les Mille et une nuits)*  
June 1950  
Gouache on paper, cut and pasted  
54 3/4 x 147 1/4" (139 x 374 cm)  
Carnegie Museum of Art, Pittsburgh. Acquired through the generosity of the Sarah Mellon Scaife Family



HENRI MATISSE (French, 1869–1954)  
*Mimosa*  
1949–51  
Maquette for rug (realized 1951)  
Gouache on paper, cut and pasted, mounted on canvas  
58 1/4 x 38 9/16" (148 x 98 cm)  
Ikeda Museum of 20th Century Art, Ito, Japan



HENRI MATISSE (French, 1869–1954)  
*Zulma*  
early 1950  
Gouache on paper, cut and pasted  
93 11/16 x 52 3/8" (238 x 133 cm)  
Statens Museum for Kunst, Copenhagen



HENRI MATISSE (French, 1869–1954)  
*Creole Dancer (Danseuse créole)*  
June 1950  
Gouache on paper, cut and pasted, on paper, mounted on canvas  
80 11/16 x 47 1/4" (205 x 120 cm)  
Musée Matisse, Nice. Gift of Henri Matisse, 1953



HENRI MATISSE (French, 1869–1954)  
*Snow Flowers (Fleurs de neige)*  
1951  
Gouache on paper, cut and pasted, on paper, mounted on canvas  
68 1/2 x 31 3/4" (174 x 80.6 cm)  
The Metropolitan Museum of Art. Jacques and Natasha Gelman Collection, 1998



HENRI MATISSE (French, 1869–1954)  
*Chinese Fish (Poissons chinois)*  
1951  
Maquette for stained-glass window (realized 1951)  
Gouache on paper, cut and pasted, and charcoal on paper, mounted on canvas  
74 3/4 x 35 1/2" (189.9 x 90.2 cm)  
Colección Patricia Phelps de Cisneros



HENRI MATISSE (French, 1869–1954)  
*Vegetables (Végétaux)*  
1951  
Gouache on paper, cut and pasted  
68 7/8 x 31 7/8" (175 x 81 cm)  
Private collection



HENRI MATISSE (French, 1869–1954)  
*Little Girl (La Fillette)*  
c. 1952  
Gouache on paper, cut and pasted  
60 x 46 1/4" (152.4 x 117.5 cm)  
Private collection



HENRI MATISSE (French, 1869–1954)  
*Celestial Jerusalem (Jerusalem celeste)*  
early 1948  
First maquette for the apse window of the Chapel of the Rosary, Vence  
Gouache on paper, cut and pasted, on paper, mounted on canvas  
104 1/2 x 51 3/16" (265.5 x 130 cm)  
Musée national d'art moderne/Centre de création industrielle, Centre Georges Pompidou, Paris. Gift of Madame Claude Duthuit in memory of Claude Duthuit, 2013



HENRI MATISSE (French, 1869–1954)  
*Pale Blue Window (Vitrail bleu pâle)*  
November 1948 - January 1949  
Second maquette for apse window for the Chapel of the Rosary, Vence  
Two-part panel: gouache on paper, cut and pasted, on kraft paper mounted on canvas  
200 11/16 x 99 5/16" (509.8 x 252.3 cm)  
Musée national d'art moderne/Centre de création industrielle, Centre Georges Pompidou, Paris. Gift of Mme Jean Matisse and Gérard Matisse, 1982



HENRI MATISSE (French, 1869–1954)  
Trial for the stained glass window *The Tree of Life (L'Arbre de vie)*  
1950  
Frosted colored glass, set with lead  
30 7/8 x 35 13/16 x 13/16" (78.5 x 91 x 2 cm)  
Fabricator: Paul Bony, Paris  
Musée Matisse, Nice. Legs de Madame Henri Matisse, 1960



HENRI MATISSE (French, 1869–1954)  
Maquette for tabernacle for the Chapel of the Rosary, Vence  
c. 1949  
(related design realized 1951)  
Gouache on paper, cut and pasted  
8 × 9 3/4" (20.3 × 24.8 cm)  
Private collection



HENRI MATISSE (French, 1869–1954)  
Maquette for tabernacle for the Chapel of the Rosary, Vence  
c. 1949  
(related design realized 1951)  
Gouache on paper, cut and pasted  
7 3/4 × 9 3/4" (19.7 × 24.8 cm)  
Private collection



HENRI MATISSE (French, 1869–1954)  
Maquette for tabernacle for the Chapel of the Rosary, Vence  
c. 1949  
(related design realized 1951)  
Gouache on paper, cut and pasted  
8 × 10" (20.3 × 25.4 cm)  
Private collection



HENRI MATISSE (French, 1869–1954)  
Maquette for red chasuble (front) for the Chapel of the Rosary, Vence  
late 1950-52  
(realized 1952)  
Gouache on paper, cut and pasted  
52 1/2 × 78 1/8" (133.4 × 198.4 cm)  
The Museum of Modern Art, New York. Acquired through the Lillie P. Bliss  
Bequest, 1953



HENRI MATISSE (French, 1869–1954)  
 Study for the hands of *Saint Dominic (Saint Dominique)* for the Chapel of the Rosary, Vence  
 1948  
 Ink on paper  
 8 3/8 × 6 3/4" (21.3 × 17.1 cm)  
 Private collection



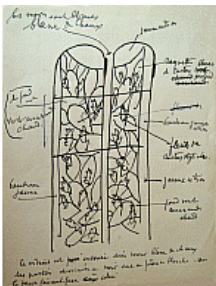
HENRI MATISSE (French, 1869–1954)  
 Study for *Saint Dominic (Saint Dominique)* for the Chapel of the Rosary, Vence  
 1949  
 Ink on paper  
 8 11/16 × 5 13/16" (22.1 × 14.8 cm)  
 Private collection



HENRI MATISSE (French, 1869–1954)  
 Study for *Madonna and Child (Vierge à l'enfant)* for the Chapel of the Rosary, Vence  
 1949  
 Ink and pencil on paper  
 6 1/2 × 11 7/8" (16.5 × 30.2 cm)  
 Private collection



HENRI MATISSE (French, 1869–1954)  
 Study for *Madonna and Child (Vierge à l'enfant)* for the Chapel of the Rosary, Vence  
 1949  
 Ink on paper  
 6 5/8 × 9 7/8" (16.8 × 25.1 cm)  
 Private collection



HENRI MATISSE (French, 1869–1954)  
 Study for *The Tree of Life (L'Arbre de vie)* for the Chapel of the Rosary, Vence  
 c. 1949  
 Ink on paper  
 10 5/8 × 8 1/4" (27 × 21 cm)  
 Private collection



HENRI MATISSE (French, 1869–1954)  
*Simon of Cyrene helps Jesus to carry the Cross (Simon aide Jésus)*. Study for the fifth Station of the Cross for the Chapel of the Rosary, Vence  
 1949  
 Ink on paper  
 10 1/2 × 8" (26.7 × 20.3 cm)  
 Private collection



HENRI MATISSE (French, 1869–1954)  
*Veronica wipes the face of Jesus (Le voile de Véronique)*. Study for the sixth Station of the Cross for the Chapel of the Rosary, Vence  
 1949  
 Ink on paper  
 10 3/8 × 8" (26.3 × 20.3 cm)  
 Private collection



HENRI MATISSE (French, 1869–1954)  
*Christ on the Cross (Jésus cloué sur le croix)*. Study for the twelfth Station of the Cross for the Chapel of the Rosary, Vence  
 1950  
 Ink on paper  
 10 1/2 × 8" (26.7 × 20.3 cm)  
 Private collection



HENRI MATISSE (French, 1869–1954)  
*Fish (Poissons)*. Study for the embroidery on the altarcloth for the Chapel of the Rosary, Vence  
 1950  
 Ink on three sheets of paper, joined  
 31 1/8 × 8 3/16" (79.1 × 20.8 cm)  
 Private collection



ADRIEN MAEGHT (French, b. 1930)  
*Matisse Executing Cut-Outs (Matisse faisant des papiers découpés)*  
 1945  
 16 mm film transferred to video, color, silent  
 1 min.  
 © Maeght 2014





FRÉDÉRIC ROSSIF (French, 1922–1990)  
*Matisse (rushes)*  
 1950  
 16mm film transferred to video, color, silent  
 8 min.  
 La Cinémathèque française



HENRI MATISSE (French, 1869–1954)  
*Christmas Eve (Nuit de Noël)*  
 1952  
 Maquette for stained-glass window (realized 1952)  
 Gouache on paper, cut and pasted, mounted on board  
 107 x 53 1/2" (271.8 x 135.9cm)  
 The Museum of Modern Art, New York. Gift of Time Inc., 1953



HENRI MATISSE (French, 1869–1954)  
*Christmas Eve (Nuit de Noël)*  
 summer–fall 1952  
 Stained glass  
 11' 3/4" x 54 3/4" x 5/8" (332.5 x 139 x 1 cm)  
 Fabricator: Paul Bony, Paris  
 The Museum of Modern Art, New York. Gift of Time Inc., 1953



PAUL BONY (French, 1911–1982)  
 Color samples for the stained glass window *Christmas Eve (Nuit de Noël)*  
 1951  
 Glass  
 Dimensions variable  
 Fonds atelier Bony, Paris



PAUL BONY (French, 1911–1982)  
 Tracings for the stained glass window *Christmas Eve (Nuit de Noël)*  
 1951  
 Pencil on tracing paper  
 A: 52 3/4 x 57 7/8" (134 x 147 cm)  
 B: 33 7/16 x 58 1/4" (85 x 148 cm)  
 C: 22 13/16 x 59 1/16" (58 x 150 cm)  
 D: 28 3/4 x 58 11/16" (73 x 149 cm)  
 Fonds atelier Bony, Paris



HENRI MATISSE (French, 1869–1954)  
*Black Leaf on Green Background (Feuille noire sur fond vert)*  
1952  
Gouache on paper, cut and pasted  
23 5/8 x 15 3/8" (60 x 39 cm)  
The Menil Collection, Houston



HENRI MATISSE (French, 1869–1954)  
*Black Leaf on Red Background (Feuille noire sur fond rouge)*  
1952  
Gouache on paper, cut and pasted  
19 11/16 x 15 11/16" (50 x 39.9 cm)  
Private collection



HENRI MATISSE (French, 1869–1954)  
*Blue Nude I (Nu bleu I)*  
spring 1952  
Gouache on paper, cut and pasted, mounted on canvas  
41 3/4 x 30 11/16" (106 x 78 cm)  
Fondation Beyeler, Riehen/Basel, Beyeler Collection



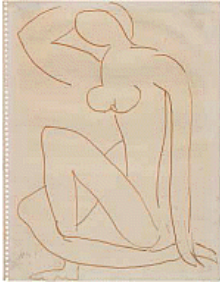
HENRI MATISSE (French, 1869–1954)  
*Blue Nude II (Nu bleu II)*  
spring 1952  
Gouache on paper, cut and pasted, on paper, mounted on canvas  
45 3/4 x 35" (116.2 x 88.9 cm)  
Musée national d'art moderne/Centre de création industrielle, Centre Georges Pompidou, Paris. Purchase, 1984



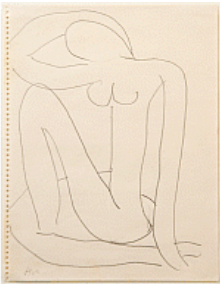
HENRI MATISSE (French, 1869–1954)  
*Blue Nude III (Nu bleu III)*  
spring 1952  
Gouache on paper, cut and pasted, on paper, mounted on canvas  
44 1/8 x 28 15/16" (112 x 73.5 cm)  
Musée national d'art moderne/Centre de création industrielle, Centre Georges Pompidou, Paris. Purchase, 1982



HENRI MATISSE (French, 1869–1954)  
*Blue Nude IV (Nu bleu IV)*  
spring 1952  
Gouache on paper, cut and pasted, and charcoal on paper, mounted on canvas  
40 1/2 x 30 1/4" (102.9 x 76.8 cm)  
Paris, musée d'Orsay, dépôt au musée Matisse/Nice. Gift of Mme Jean Matisse, 1979



HENRI MATISSE (French, 1869–1954)  
Untitled (Study for Blue Nudes)  
c. 1952  
Ink on paper  
10 5/8 x 8 1/4" (27 x 21 cm)  
Rhode Island School of Design. Gift of Mr. and Mrs. Barnet Fain



HENRI MATISSE (French, 1869–1954)  
Untitled (Study for Blue Nudes)  
c. 1952  
Pencil on paper  
10 5/8 x 8 1/4" (27 x 21 cm)  
The Detroit Institute of Arts. Gift of John S. Newberry



HENRI MATISSE (French, 1869–1954)  
Untitled (Study for Blue Nudes)  
c. 1952  
Colored pencil on paper  
10 5/8 x 8 1/4" (27 x 21 cm)  
Indianapolis Museum of Art. Gift of Mr. and Mrs. J.W. Alsdorf



HENRI MATISSE (French, 1869–1954)  
Untitled (Study for Blue Nudes)  
c. 1952  
Colored pencil on paper  
10 5/8 x 8 1/4" (27 x 21 cm)  
Indianapolis Museum of Art. Gift of Mr. and Mrs. J.W. Alsdorf



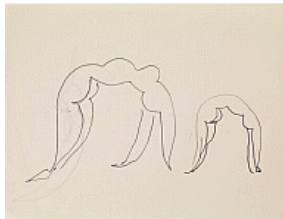
HENRI MATISSE (French, 1869–1954)  
Untitled (Study for Blue Nudes)  
c. 1952  
Pencil on paper  
10 5/8 × 8 1/4" (27 × 21 cm)  
Private collection



HENRI MATISSE (French, 1869–1954)  
*Acrobats (Acrobates)*  
spring–summer 1952  
Gouache on paper, cut and pasted, and charcoal on white paper  
83 7/8 × 82" (213 × 208.3 cm)  
Private collection



HENRI MATISSE (French, 1869–1954)  
*Acrobat (Acrobate)*  
1952  
Ink on paper  
41 9/16 × 29 5/16" (105.5 × 74.5 cm)  
Private collection



HENRI MATISSE (French, 1869–1954)  
Untitled (Acrobats)  
c. 1952  
Ink on paper  
8 1/4 × 10 5/8" (21 × 27 cm)  
Private collection



HENRI MATISSE (French, 1869–1954)  
Untitled (Acrobat)  
c. 1952  
Ink on paper  
10 5/8 × 8 1/4" (27 × 21 cm)  
Private collection



HENRI MATISSE (French, 1869–1954)  
Untitled (Acrobat)  
c. 1952  
Ink on paper  
10 5/8 × 8 1/4" (27 × 21 cm)  
Private collection



HENRI MATISSE (French, 1869–1954)  
Untitled (Acrobat)  
c. 1952  
Ink on paper  
10 5/8 × 8 1/4" (27 × 21 cm)  
Private collection



HENRI MATISSE (French, 1869–1954)  
Untitled (Acrobat)  
c. 1952  
Ink on paper  
10 5/8 × 8 1/4" (27 × 21 cm)  
Private collection



HENRI MATISSE (French, 1869–1954)  
Untitled (Acrobat)  
c. 1952  
Ink on paper  
10 5/8 × 8 1/4" (27 × 21 cm)  
Private collection



HENRI MATISSE (French, 1869–1954)  
Untitled (Acrobat)  
c. 1952  
Ink on paper  
10 5/8 × 8 1/4" (27 × 21 cm)  
Private collection



HENRI MATISSE (French, 1869–1954)  
Untitled (Acrobat)  
c. 1952  
Ink on paper  
10 5/8 × 8 1/4" (27 × 21 cm)  
Private collection



HENRI MATISSE (French, 1869–1954)  
Untitled (Acrobat)  
c. 1952  
Ink on paper  
10 5/8 × 8 1/4" (27 × 21 cm)  
Private collection



HENRI MATISSE (French, 1869–1954)  
Untitled (Acrobat)  
c. 1952  
Ink on paper  
10 5/8 × 8 1/4" (27 × 21 cm)  
Private collection



HENRI MATISSE (French, 1869–1954)  
*Venus (Vénus)*  
1952  
Gouache on paper, cut and pasted, on white paper, mounted on paper panel  
39 13/16 x 30 1/8" (101.2 x 76.5 cm)  
National Gallery of Art, Washington. Ailsa Mellon Bruce Fund, 1973.18.2



HENRI MATISSE (French, 1869–1954)  
*The Wave (La Vague)*  
c. 1952  
Gouache on paper, cut and pasted  
20 1/8 x 62 3/8" (51.1 x 158.4 cm)  
Musée Matisse, Nice. Gift of the artist's estate, 1963



HENRI MATISSE (French, 1869–1954)  
*Blue Nude, The Frog (Nu bleu, la grenouille)*  
1952  
Gouache on paper, cut and pasted, mounted on canvas  
55 1/2 x 52 3/4" (141 x 134 cm)  
Fondation Beyeler, Riehen/Basel, Beyeler Collection



HENRI MATISSE (French, 1869–1954)  
*Standing Blue Nude (Nu bleu debout)*  
1952  
Gouache on paper, cut and pasted  
44 3/8 x 29" (112.7 x 73.7 cm)  
The Metropolitan Museum of Art. The Pierre and Maria-Gaetana Matisse Collection, 2002



HENRI MATISSE (French, 1869–1954)  
*Woman with Amphora and Pomegranates (Femme à l'amphore et grenades)*  
1953  
Gouache on paper, cut and pasted, mounted on canvas  
95 7/8 x 37 15/16" (243.6 x 96.3 cm)  
National Gallery of Art, Washington. Ailsa Mellon Bruce Fund, 1973.18.3  
Coward no. 201



HENRI MATISSE (French, 1869–1954)  
*Woman with Amphora (Femme à l'amphore)*  
1953  
Gouache on paper, cut and pasted, mounted on canvas  
66 5/16 x 18 7/8" (168.5 x 48 cm)  
Musée national d'art moderne/Centre de création industrielle, Centre Georges Pompidou, Paris. Dépôt au musée Matisse, Nice



HENRI MATISSE (French, 1869–1954)  
 Cover maquette for the book *Les Fauves* by Georges Duthuit (1949)  
 1949  
 Gouache on paper, cut and pasted  
 12 11/16 x 20" (32.3 x 50.8 cm)  
 Private collection, Japan



HENRI MATISSE (French, 1869–1954)  
 Cover maquette for the book *Matisse: His Art and His Public* by Alfred H. Barr, Jr. (1951)  
 1951  
 Gouache on paper, cut and pasted  
 10 5/8 x 16 7/8" (27.0 x 42.9 cm)  
 The Museum of Modern Art, New York. Transferred from The Museum of Modern Art Publications Department, 1953



HENRI MATISSE (French, 1869–1954)  
 Cover maquette for the exhibition catalogue *Henri Matisse* (1951)  
 1951  
 Gouache on paper, cut and pasted  
 10 5/8 x 15 3/4" (27.0 x 40.0 cm)  
 The Museum of Modern Art, New York. Transferred from The Museum of Modern Art Publications Department, 1953

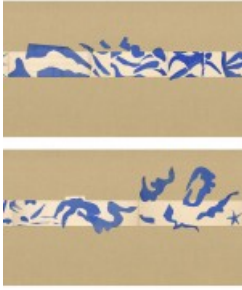


HENRI MATISSE (French, 1869–1954)  
 Cover maquette for the book *Apollinaire* by André Rouveyre (1952)  
 1951–52  
 Gouache on paper, cut and pasted  
 12 7/8 x 10" (32.7 x 25.4 cm)  
 The Moulrot Archives



HENRI MATISSE (French, 1869–1954)  
 Cover maquette for the book *The Decisive Moment (Images à la Sauvette)* by Henri Cartier-Bresson (1952)  
 1952  
 Gouache on paper, cut and pasted, and ink  
 14 3/16 x 22 7/16" (36 x 57 cm)  
 Musée départemental Matisse, Le Cateau-Cambrésis. Gift of Mme Marie Matisse, 1995





HENRI MATISSE (French, 1869–1954)  
*The Swimming Pool (La Piscine)*  
late summer 1952  
(realized as ceramic 1999 and 2005)  
Gouache on paper, cut and pasted, on painted paper  
Overall 73" x 53' 11" (185.4 x 1643.3 cm). Installed as nine panels in two parts  
on burlap-covered walls 11' 4" (345.4 cm) high. Frieze installed at a height of 5'  
5" (165 cm)  
The Museum of Modern Art, New York. Mrs. Bernard F. Gimbel Fund, 1975



HENRI MATISSE (French, 1869–1954)  
*Women and Monkeys (Femmes et singes)*  
1952  
Gouache on paper, cut and pasted, and charcoal on white paper  
28 1/4 x 112 11/16" (71.7 x 286.2 cm)  
Museum Ludwig, Köln/Sammlung Ludwig



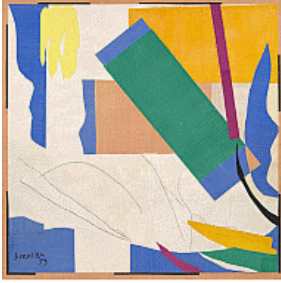
HENRI MATISSE (French, 1869–1954)  
*The Parakeet and the Mermaid (La Perruche et la sirène)*  
1952  
Gouache on paper, cut and pasted, and charcoal on white paper  
132 11/16 x 302 9/16" (337 x 768.5 cm)  
Stedelijk Museum, Amsterdam. Acquired with the assistance of the Vereeniging  
Rembrandt and the Prince Bernhard Cultuurfonds



HENRI MATISSE (French, 1869–1954)  
*Blue Nude with Green Stockings (Nu bleu aux bas verts)*  
1952  
Gouache on paper, cut and pasted  
102 3/8 x 66 1/8" (260 x 168 cm)  
Fondation Louis Vuitton, Paris



HENRI MATISSE (French, 1869–1954)  
*Green Alga on Black Background (The Swan) (Algue verte sur fond noir [La  
Cygne])*  
1953  
Gouache on paper, cut and pasted  
31 7/8 x 25 9/16" (81 x 65 cm)  
Private collection



HENRI MATISSE (French, 1869–1954)  
*Memory of Oceania (Souvenir d'Océanie)*  
summer 1952–early 1953  
Gouache on paper, cut and pasted, and charcoal on paper mounted on canvas  
9' 4" x 9' 4 7/8" (284.4 x 286.4 cm)  
The Museum of Modern Art, New York. Mrs. Simon Guggenheim Fund, 1968



HENRI MATISSE (French, 1869–1954)  
*The Snail (L'Escargot)*  
1953  
Gouache on paper, cut and pasted, on paper mounted on canvas  
112 3/4 x 113" (286.4 x 287 cm)  
Tate. Purchased with assistance from the Friends of the Tate Gallery, 1962



HENRI MATISSE (French, 1869–1954)  
*Large Decoration with Masks (Grande Décoration aux masques)*  
1953  
Gouache on paper, cut and pasted, and ink on white paper, mounted on canvas  
139 3/16 x 392 5/16" (353.6 x 996.4 cm)  
National Gallery of Art, Washington. Ailsa Mellon Bruce Fund, 1973.17.1



HENRI MATISSE (French, 1869–1954)  
*Ivy in Flower (Lierre en fleur)*  
1953  
Maquette for stained-glass window (realized 1956)  
Gouache on paper, cut and pasted, and pencil on colored paper  
111 7/8 x 112 5/8" (284.2 x 286.1 cm)  
Dallas Museum of Art, Foundation for the Arts Collection. Gift of the Albert and Mary Lasker Foundation



HENRI MATISSE (French, 1869–1954)  
*The Sheaf (La Gerbe)*  
1953  
Maquette for ceramic (realized 1953)  
Gouache on paper, cut and pasted, mounted on canvas  
115 1/2 x 138 x 1 1/4" (293.4 x 350.5 x 3.2 cm)  
Collection University of California, Los Angeles. Hammer Museum. Gift of Mr. and Mrs. Sidney F. Brody



HENRI MATISSE (French, 1869–1954)

*Acanthuses (Les Acanthes)*

1953

Maquette for ceramic (realized 1953)

Gouache on paper, cut and pasted, and charcoal on painted paper, mounted on canvas

122 11/16 × 138 1/2" (311.7 × 351.8 cm)

Fondation Beyeler, Riehen/Basel, Beyeler Collection