



Watching Our
Wheatbelt Wildflower Wonders
Will We Weep Or Win

Dr Eddy Wajon
Wildflower Society of WA

Wheatbelt Wildflower Wonders



Verticordia monadelph Pink Woolly Featherflower

Wheatbelt Wildflower Wonders



Dryandra carlinoides Pink Dryandra

Wheatbelt Wildflower Wonders



Banksia hookeriana Hooker's Banksia

Balaustion pulcherrimum
Native Pomegranite



Wheatbelt Wildflower Wonders



***Calytrix habrantha* Radiant Starflower**



***Drummondita hassellii* Matchsticks**

Wheatbelt Wildflower Wonders



Hakea conchifolia Shell-leaved Hakea



Hakea megalosperma Lesueur Hakea



Hakea laurina Pincushion Hakea



Hakea platysperma Cricket Ball Hakea

Wheatbelt Wildflower Wonders



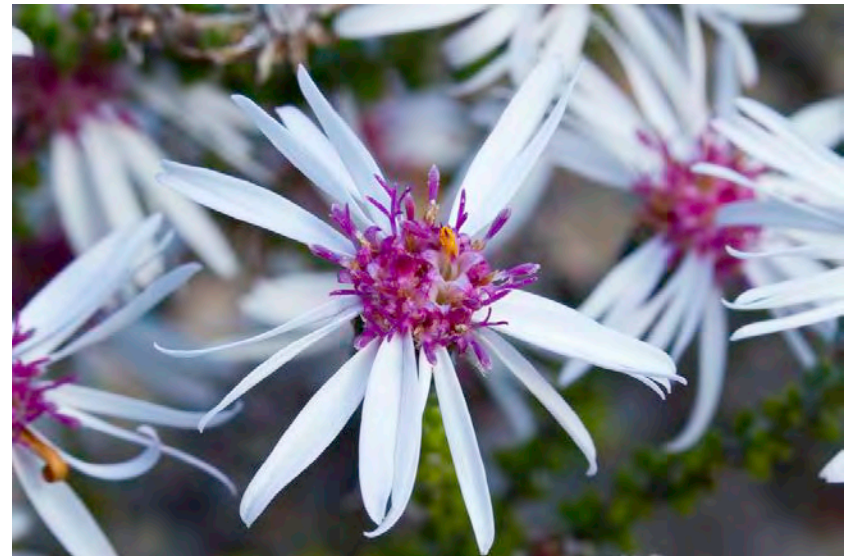
Jacksonia restioides Sedgy Jacksonia



Melaleuca macronychia Long-leaved Honey Myrtle



Lechenaultia formosa Red Leschenaultia



Olearia ramosissim Branched Daisy Bush

Wheatbelt Wildflower Wonders



Wheatbelt Wildflower Wonders



Fantastic Roadsides



Tootbardi Road, Jurien



Photos by Lyn Alcock



Fantastic Roadsides



Banovich Road, Jurien



Photos by Lyn Alcock



Fantastic Roadsides



**High conservation value roadside in the Wheatbelt
Photo by Kylie Payne**

Unlawful roadside vegetation clearing

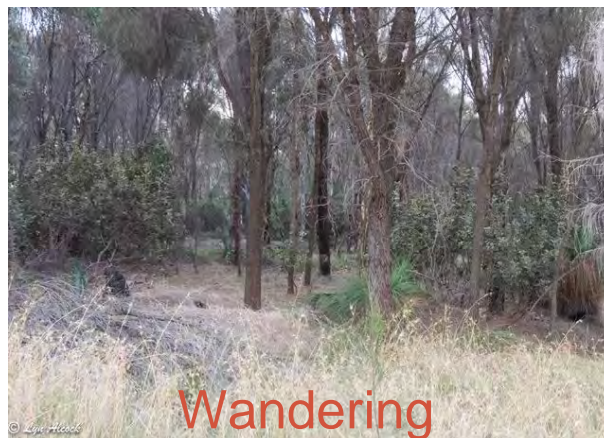
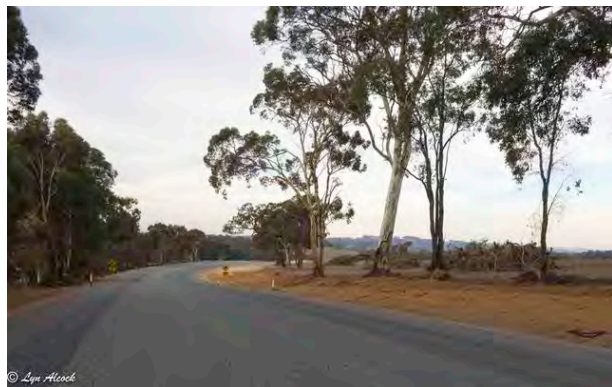
Jerramungup



Pingrup



Excessive roadside vegetation clearing



Wandering
Photos by
Lyn Alcock

Dowerin
Photos by
Lyn Phillips



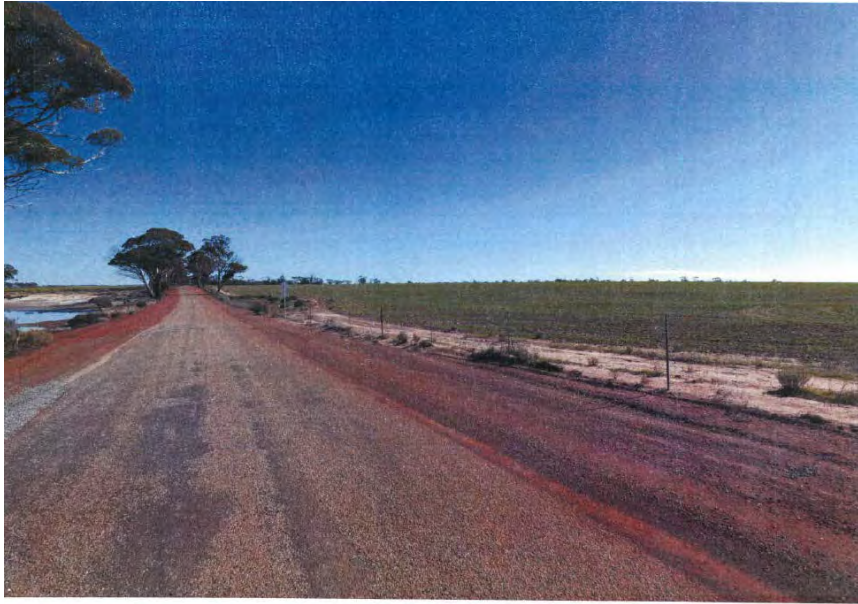
Excessive roadside vegetation clearing



Gillingara Photos by Rachel Walmsley



Excessive roadside vegetation clearing



Corrigin-Narembeen Road Photos by Shire of Corrigin

Drivers for roadside vegetation clearing

Tier 3 railway line closures

CBH Bin closures

Increased use of wide, large and heavy vehicles
by farmers and contractors

Multiple farming properties

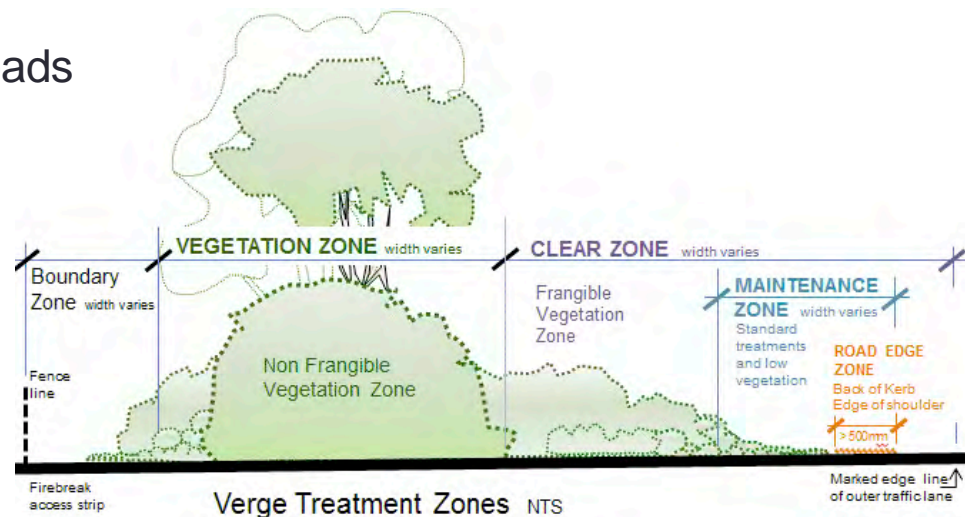
Shires upgrading roads to cater for

RAV4 and RAV7 (Restricted Access Vehicles)

Rural road deaths: Wheatbelt has highest per capita rate in the world

Increasing road safety requirements and implementation of AustRoads guidelines

- 6-8m recovery/clear zone on rural roads



Values of roadside vegetation

Ecological

- contain Rare Flora and TECs



Grevillea scapigera Photo by Bob Dixon



Grevillea brachystylis subsp. *grandis*



Eucalypt woodlands of the Western Australian Wheatbelt
Photo by Kelli McCreery



Banksia
cuneata

Values of roadside vegetation

Ecological

- inhibits weeds

Love Grass along
Brand Highway
Photo by Penny
Hussey



Impact of disturbance (by fire)
on weeds
Photo by Kylie Payne

- habitat for rare/threatened fauna



Carnaby's Black Cockatoo

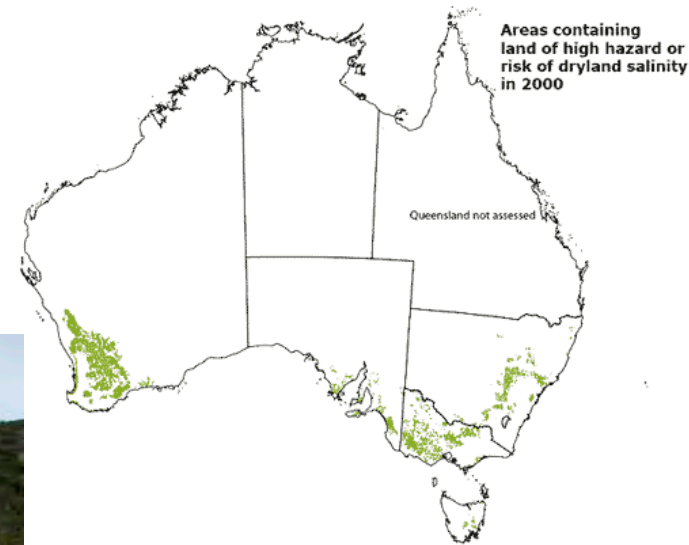


Red-tailed Phascogale

Values of roadside vegetation

Hydrological

- prevents/inhibits salinity
- slows down water to reduce erosion



Values of roadside vegetation

Aesthetic

- cathedral effect
- majestic, stately trees



York-Quairading Road, York
Photo by John Salmon

Values of roadside vegetation

Aesthetic

- cathedral effect of majestic, stately trees



Brookton Highway, Corrigin

The Safe System

There are known physical limits to the amount of force our bodies can take before we are injured

People will continue to make mistakes, and the transport system must accommodate these

The transport system should not result in death or serious injury as a consequence of errors on the roads

Safe drivers

Safe speeds

Safe vehicles

Safe roads and roadsides

The Safe System

Recent findings of most effective Safe System actions

- road safety barriers along hi-speed, high-volume roads are the most effective preventative measures
- road safety barriers are more effective and less hazardous than recovery zones
- road safety barriers are not likely or affordable along most low volume, rural roads
- autonomous vehicles present a massive potential to reduce death and serious injury, but it will take time
- driver-assist technologies in cars are likely to yield the most benefits in the short term
- road edge identification is therefore very important
- need innovative solutions for run-off road and head-on crashes along low volume, rural roads
- speed reduction and vehicle-based speed management may offer the most feasible solutions in the short term

Alternatives to roadside clearing

Road safety barriers: Chester Pass Road, Borden



Alternatives to roadside clearing

Road safety barriers: York-Quairading Road



Alternatives to roadside clearing

Reduce speed limits



Audible edge lining



Alternatives to roadside clearing

Wider pavements



Guideposts (reflective delineation)



Alternatives to roadside clearing

Vary roadside environment

- Stimulate the mind to avoid fatigue and drowsiness



Alternatives to roadside clearing

Put the road in cleared paddocks

- Biodiversity has value



Retaining vegetation alongside pavement

Retain vegetation along back slope to reduce erosion

Retain energy absorbing frangible trees and large shrubs

Retain or install (revegetate) low native shrubs, native grasses and groundcovers on the front and back slope/batters



Retaining vegetation alongside pavement

Widen and seal the shoulders

Steepen the batters

Retain low shrubs at corners and curves that maintain sightlines

Remove the weeds not the natives

Realign the table drain around trees using excavators rather than graders

Retain trees along roads to provide shade to protect motorist's vision from the sun at dawn and dusk

Use and retain distant tall vegetation to increase sight distance on crests

Examples of good practice

Carbarup Road, Kendenup



Caves Road, Margaret R



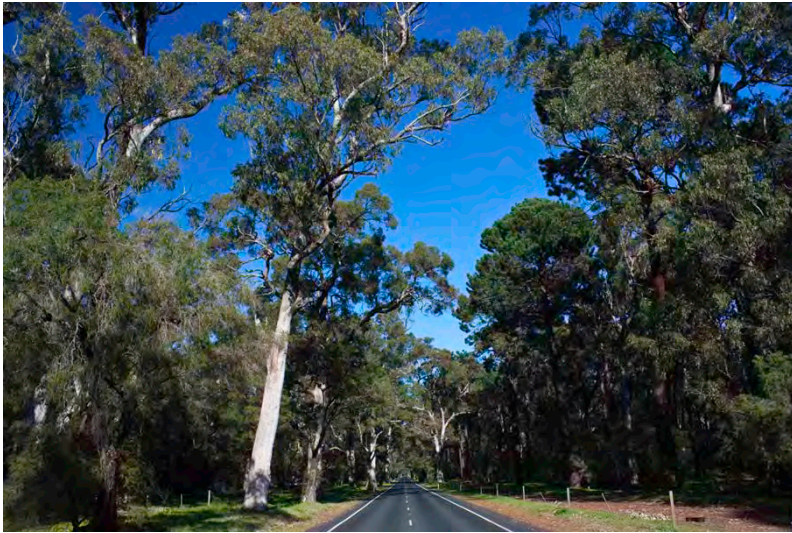
Examples of good practice

Gnowangerup – Broomehill Road



Examples of good practice

Tuart Drive, Capel



Mt Alexander, Victoria



What you can do

Prepare a submission or appeal to Clearing Permits

Post a comment on Wildflower Society of WA Facebook

Get in touch with the media: newspapers, TV

Complain to your local government

Complain to your local member: local government, State, Federal

Complain to the Minister: Transport, Safety, Environment, Tourism

Demonstrate/rally



Photos by ABC TV



What you can do

Have a meeting to discuss plans/strategies with:

- local government
- MRWA
- Ministers

Request site visit with the proponent to discuss alternatives

Understand and document your special areas



What you can do

Plant vegetation on your farm/property/nearby nature reserve

Revegetate a wider road reserve in paddocks

- to the same width or greater than that cleared

