



Bioblitz

Saturday 5th & Sunday 6th September 2020
Carrah Farms, Western Australia

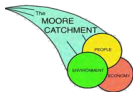
Findings Report



Photo: N Harner

This Moore Catchment Council project has been funded by the Western Australian Government's State Natural Resource Management Program

Many thanks to Sarah & Geoff Mason for hosting at Carrah farms



natural resource management program





What a weekend !



The 2020 Carrah Farms Bioblitz was organised by Moore Catchment Council, and hosted by Sarah & Geoff Mason, the owners of Carrah Farms.

What is a Bioblitz? A BioBlitz is a 24-hour event involving rapid collection of data about the biological diversity of a particular site; enabling scientists and other experts to identify as many plant and animal species as can be found in this limited time frame. It doesn't provide a complete inventory of species, but rather a 'snapshot' of the species that occur in the area.

A BioBlitz is a collaborative process, which brings together scientists, skilled amateurs, willing workers and interested 'others', with members of the local community, all working together to expand knowledge about the biodiversity of a particular location - you don't have to be a native flora and fauna whizz to join in !

The Carrah Farms Bioblitz took place 5-6th September 2020 with 45 people participating. The 24hr event intended to document as many flora, bird, bug and other animal species as possible. It was great fun and the event is best summed up by one of the participants

"Huge thanks for an incredible weekend. I had a horrible feeling I'd signed up for something that was way over my head- having to ID plants and birds but basically have a very limited knowledge.

What we actually just experienced was one of the most inclusive and family friendly events I've had the fortune to attend. Every "guru" was exceptionally open and accepting of all levels of knowledge and age. The kids are raving about things they got to do, pitfall traps, the loved the insect sessions, Joe's technical cameras- the whole thing was fabulous." Tracy Sievwright.



Photo T Sievwright



Photo K Payne



Photo T Sievwright

Bioblitz location

Carrah Farms is a working arable farm with 350ha of remnant Wandoo-Marri woodland and creek lines. Sarah's mum, Caroline Goodden, bought the farm in 2001 and now Sarah and Geoff Mason manage it. They have carried out many projects to protect and enhance the native bushland and riparian areas. The vegetation adjoins the Rica Erickson reserve to the south.

The farm is frequented by an array of wildlife including many bird species (inc. Carnaby's Black Cockatoo), echidnas, frogs, insects, bats etc. September was the perfect time to view the Wandoo woodland wonderland.

There was much to explore at Carrah !

Carrah Farms is located at:

1173 Calingiri West Rd, Old Plains WA 6569



Participants camped at the Bioblitz HQ from Friday - Sunday. Carrah Farms cooked a delicious Saturday dinner and provided Sunday morning's eggs and bacon (which Graham Johnson, Rachel and children helped cook). Moora Citrus donated oranges. Additional activities included a Saturday night stalk with Joe and Sunday dawn birding session with Phil and Wayne. We were also blessed with good weather !)





Surveying



- ☺ Surveying consisted of 4 x 2hrs sessions - 2 afternoon sessions on Saturday 5th September and 2 morning sessions on 6th September
- ☺ Each session had 4 teams each with a 'guru' leader - Flora, Insects, Bats/bugs/hole dwellers and Birds (Birds did split into 2 smaller teams for some of the sessions).
- ☺ A scribe noted species found and recorded them on a provided survey sheet.
- ☺ There was no taking of flora and fauna away from the farm - all ID was done in-situ and later referring to photos taken. Some insects were captured for investigation under the Bioblitz HQ microscope and then released.

The Carrah Farms Bioblitz recorded 256 flora and fauna species

- **170 flora species**
- **42 bird species**
- **44 insect morpho-species**



Photo: K Payne



Team leaders



Birds



Phil Lewis I'm a long time BirdLife member having been interested in birds for many years. I am the convener of the Wheatbelt Avon Bird Group, a localised branch of BirdLife. I worked 5 years for WWF helping farmers look after remnant bushland on there farms. Mainly just funding for fencing out the stock but sometimes a conservation covenant. I'm also on the comity of the WA Malleefowl Recovery Team and coordinate the monitoring of Malleefowl mounds on 3 sites. Otherwise I just love all nature.

Flora



Kylie Payne I have worked in a variety of environmental roles in community landcare / natural resource management and with state and local government from the Goldfields, to the Midwest and South West and around Perth. I enjoyed my time in the Northern Agricultural Region 10 or so years ago as Biodiversity Support Officer till the funding dried up! I love meeting people and learning together about our amazing native flora. I also enjoy taking photos of our colourful flora and sunsets and love echidna's.

Flora



Veronica Metcalf I graduated from Murdoch late last century (1999) with an Environmental Science degree, and did Honours in dryland salinity issues, in particular, using computer modelling to assess the effectiveness of revegetation scenarios. I worked as Landcare Project Officer at Calingiri for nearly 3 years after graduating, then went overseas for a few years before working in landcare yet again for the Hotham Catchment, in Boddington. Have been a mum and small acreage farmer for the last 13 odd years, with a passion for our local fauna and flora.

Birds



Wayne O'Sullivan Wayne comes from a background in revegetation and remnant ecology protection in low rainfall parts of WA. After a lifetime of tree research and development, large scale revegetation and rehabilitation, community engagement and support, and advocacy, he's now a retired bird (and plant) nerd, who spends a fair bit of time as a mentor for natural history projects with Millennium Kids Inc.

Insects



Dilanka Mihindukulasooriya Dilanka is an Environmental Scientist at Astron and completed her PhD in environmental biology at Curtin University. She has significant field experience across a wide range of environmental fields, including the monitoring of soil, water and air quality and the survey of flora and fauna. Dilanka has two years of teaching experience as a University Lecturer on Pollution and Ecotoxicology. She has over ten years of experience insect taxonomy.

Bats/reptiles



Joe Tonga Joe is the Batman ! Passion for microbats. Works with schools to help build bat boxes and educate about bats and other bush animals. Has a great pole camera for spying in nests and hidey-holes. Plus lots of gizmos for night stalks - great for the kids !

Flora



Rachel Walmsley I've worked for Moore Catchment Council since early 2008 after emigrating to Western Australia in 2007. I enjoy exploring the natural environment and often disappear for a wander !! I also enjoy wildflower photography and actively promote the Moore's vast array of natural assets for conservation and eco-tourism on social media and through publications.

Flora/general



Sarah Mason Sarah grew up in England and Zambia and has always loved the wilder areas of wherever she is. Arriving in Australia in 1988 she realised that she had been born in the wrong country and spent many years trying to find a way to stay here. She married a bloke from the bush; Bencubbin, and was granted residency. Once this happened her mum decided to buy a farm in WA. Carrah Farms is the result and this led to Sarah joining the local Calingiri/New Norcia LCDC and then becoming sec/treas of that and then onto Moore Catchment Council.



Flora walks summary

Flora report by Kylie Payne

The Flora walks were conducted at 4 different sites for the 4 different sessions. Please refer to the Map. Veronica Metcalfe and Kylie Payne co-led the flora walks with a great diversity of participants. It was great to have the kids involved too.

All together we found approximately 170 flora species across the 4 sites: There were 22 species found at all 4 sites, 25 species found at 3 sites, 32 species at 2 sites and 92 species were found at only 1 of the sites. Sites 1 and 3 had the most similar species.

A Priority 3 species was found at Site 2, *Tetratecha pilifera*. *Synaphea grandis* (Priority 4) and *Hibbertia elegans*, a known Priority 1 species were found at Site 4. The Priority species are poorly known species and need further study, so it was exciting to find a couple more Priority species during the flora sessions.



BIOBLITZ - SEPTEMBER 2020 - FLORA WALKS
 Carrah Farms

Attached is a list of all the species found, including scientific name and common names, and description from the field sheets. The list also shows which sites each species was found at.

Please note: The identifications are tentative due to being done mostly from photos. Some plants were not in flower or we didn't have a photo of, so a few are still unknown, but most have now been identified.

Site	Location	Description	No of species
1	South East (closest to BioBlitz Headquarters)	Open Wandoo woodland	77
2	Central	Laterite ridge	92
3	West	Open Wandoo woodland	73
4	North, closest to house	Wandoo marri Woodland	76

Also attached are photo pages showing most of the species that were photographed at each site.

Special thanks to other photographers who supplied their photos and assisted with identifications: Andrew Hunter, Dannielle Reed, Neville Horner, Sharon Lewis and Rachel Walmsley. Also, a big thank you to Michael Hislop, Robert Davis, Juliet Wege and Ryonen Butcher from the WA Herbarium who helped with ID's and any others who assisted. Thanks again to everyone for participating in the flora walks and if we go back again it would be great to build on this already impressive list.



Flora species lists



FLORA SPECIES LIST – SITES 1 TO 4

CARRAH BIOBLITZ - SEPTEMBER 2020

Species we don't have photos of	Some of these are easy to identify but would still be nice to have a photo of; others we need for identification purposes
---------------------------------	---

Scientific name	Common Name	Description	Site 1 South East	Site 2 Central	Site 3 West	Site 4 North	Tally (# of sites found at)
<i>Acacia leptospermoides</i> <i>subsp. leptospermoides</i>		Fine fleshy leaf			1	1	2
<i>Acacia pulchella</i> sens. lat.	Prickly Moses		1	1	1	1	4
<i>Acacia</i> sp. ?		Typical elliptic leaf shape drawn		1			1
<i>Acacia ?andrewsii</i>				1			1
<i>Acacia ?drummondii</i>	Drummond's Wattle	Grey green leaf, golden new growth in seed		1			1
<i>Acacia ?lasiocarpa</i>	Panjang or Glow Wattle		1	1			2
<i>Acacia urophylla</i>	Pointed leaved Acacia, Tall-leaved Acacia, Veined Wattle or Net-leaved Wattle	Leaves only			1	1	2
<i>Adenanthos cygnorum</i>	Common Woollybush	hairy leaves		1		1	2
<i>Allocasuarina ?huegeliana</i>		more likely to be <i>Allocasuarina</i> <i>humilis</i> ?		1			1
<i>Allocasuarina humilis</i>	Dwarf Sheoak	red flowers and nuts	1		1	1	3
<i>Amyema</i> sp.		Mistletoe on Eucalypt		1			1
<i>Anigozanthos humilis</i>	Catspaw		1		1		2
Asteraceae sp.		daisy small white				1	1
Asteraceae sp.		yellow daisy				1	1
<i>Austrostipa</i> sp.	Speargrass or Stipa		1		1		2
<i>Banksia bipinnatifida</i> <i>subsp. multifida</i>		Not in flower, leaves only		1			1
<i>Banksia dallaneyi</i>	Couch Honeypot	was <i>Dryandra</i> <i>lindleyana</i>	1	1	1	1	4
<i>Banksia fraseri</i>			1		1		2
<i>Banksia grandis</i>						1	1
<i>Banksia nivea</i>						1	1
<i>Banksia nobilis</i> subsp. <i>nobilis</i>	Golden Dryandra					1	1



Flora species lists



<i>Banksia polycephala</i>	Many-headed Dryandra		1	1			2
<i>Banksia sessilis</i>	Parrot Bush		1	1		1	3
<i>Banksia squarrosa</i>	Pingle	was Dryandra carduacea		1	1	1	3
<i>Billardiera sp.</i>				1		1	2
<i>Boronia ovata</i>						1	1
<i>Borya sphaerocephala</i>	Resurrection Plant, Pin Cushions		1		1	1	3
<i>Bossiaea eriocarpa</i>	Common Brown pea		1	1	1	1	4
<i>Bossiaea spinescens</i>		Dark yellow and red flowers		1			1
<i>Caesia micrantha</i>	Pale grass-lily	tiny white flower 6 petals		1			1
<i>Caladenia denticulata subsp. denticulata</i>	Yellow Spider Orchid			1			1
<i>Caladenia denticulata subsp. rubella</i>	Clumped Spider Orchid	Wispy petals – red tips		1			1
<i>Caladenia flava</i>	Cowslip Orchid		1	1	1	1	4
<i>Caladenia longicauda subsp. eminens</i>	Stark White Spider Orchid	very tall and large, many of them Site 2	1	1	1	1	4
<i>Calandrinia ?granulifera</i>	Pygmy Purslane	white or pink flower - 5 petal, groundcover	1				1
<i>Calothamnus quadrifidus</i>	One-sided Bottlebrush				1	1	2
<i>Calothamnus sanguineus</i>	Silky-leaved Blood flower	Not flowering	1	1			2
<i>Calytrix leschenaultii</i>						1	1
<i>Calytrix variabilis</i>	Purple Starflower or Fringe Myrtle	purple flower		1	1		2
<i>Chamaescilla corymbosa</i>	Blue squill		1	1	1	1	4
<i>Cheilanthes sp. ?</i>		fern, maybe Banksia bipinnatifida subsp. multifida		1			1
<i>Comesperma volubile</i>	Love creeper	Blue/purple flowers	1	1			2
<i>Conostylis ?candicans</i>		grey tough leaf				1	1
<i>Conostylis setigera</i>	Bristly Cottonhead		1		1	1	3
<i>Conostylis sp.</i>	Yellow Cottonhead	tiny		1			1
<i>Conostylis ?aurea</i>	Golden Conostylis		1				1
<i>Corymbia calophylla</i>	Marri		1	1	1	1	4

Flora species lists

<i>Cryptandra arbutiflora</i>	Waxy Cryptandra	Cream to pink tubular flowers 2 photos	1				1
<i>Cryptandra nutans</i>		(see photo in full flower- pink, apricot, cream flower)	1				1
<i>Cyanicula gemmata</i>	Blue China Orchid		1				1
<i>Dampiera lavandulacea</i>		Flower colours dark purple to mauve, white, pink - Grey furry leaf	1	1	1		3
<i>Dampiera lindleyi</i>		Long flat upright leaf	1	1			2
<i>Daviesia angulata</i>		spiky leaves and pods		1		1	2
<i>Daviesia decurrens</i>	Prickly Bitter-pea				1		1
<i>Daviesia hakeoides subsp. subnuda</i>		No leaves, triangle shaped orange/red fruit	1	1	1		3
<i>Desmodium ?asper</i>	Sedge 1	twisty, spirals			1		1
<i>Dianella revoluta</i>	Blueberry Lily		1	1	1	1	4
<i>Dillwynia laxiflora</i>	Parrot Pea		1	1	1		3
<i>Diuris corymbosa</i>	Common Donkey Orchid	some with small face		1		1	2
<i>Diuris corymbosa complex</i>	Donkey Orchid	finished flowering	1	1	1	1	4
<i>Dodonaea ericoides</i>	Hopbush	fruit looks like Lechenaultia buds		1			1
<i>Drosera erythrorhiza</i>	Red Ink Sundew	flat plant/ leaves	1	1	1	1	4
<i>Drosera glanduligera</i>	Pimpernel Sundew					1	1
<i>Drosera macrantha or D. menziesii or D. pallida</i>	Bridal rainbow	White flower, long climber	1	1	1	1	4
<i>Ericksonella saccharata</i>	Sugar Orchid		1		1		2
<i>Ericomyrtus tenuior</i>		STABM pink/apricot flower			1	1	2
<i>Eucalyptus accedens</i>	Powderbark Wandoo			1	1		2
<i>Eucalyptus drummondii</i>	Drummond's Gum					1	1
<i>Eucalyptus wandoo</i>	Wandoo		1	1	1	1	4
<i>Gastrolobium ?spatulatum</i>	Poison Bush		1	1			2
<i>Gastrolobium spinosum</i>	Prickly poison	not in flower	1	1		1	3
<i>Glischrocaryon aureum</i>	Common Popflower			1		1	2
<i>Glischrocaryon flavescens?</i>	Pale Yellow Pop-flower	No flowers or leaves		1			1



Flora species lists



<i>Gompholobium marginatum</i>	Wedge Pea or Glory Pea	Yellow flowers	1		1		2
<i>Gompholobium sp. ?</i>		Leaves only ? Acacia?		1			1
<i>Goodenia ?berardiana</i>	Goodenia	yellow flower	1				1
<i>Goodenia ?pusilliflora</i>	Smallflower Goodenia					1	1
<i>Goodenia sp.</i>					1		1
<i>Grevillea pilulifera</i>	Woolly-flowered Grevillea	Cream flower with red and yellow ends		1			1
<i>Grevillea sp.</i>		Red flower low ground		1			1
<i>Grevillea synapheae</i>	Catkin Grevillea		1	1	1	1	4
<i>Grevillea umbellata</i>		Cream flower		1			1
<i>Haemodorum sp.</i>	Bloodroot or Mardja		1	1		1	3
<i>Haemodorum spicatum</i>	Bloodroot, Mardja				1		1
<i>Hakea ?erinacea</i>	Hedge-hog Hakea	Hakea - in thicket		1			1
<i>Hakea rustifolia</i>		elliptical pointed leaves, no flowers				1	1
<i>Hakea ?sulcata</i>	Furrowed Hakea	Very small fruit		1			1
<i>Hakea lissocarpha</i>	Honey Bush	One white flower	1	1	1		3
<i>Hakea sp.</i>		tall, white summer flower		1		1	2
<i>Hakea trifurcata</i>	Twin-leaf Hakea or Dead Dog Hakea				1		1
<i>Helichrysum leucopsidium ?</i>	Unknown	?weed, no flowers, many plants under wandoo	1				1
<i>Hemigenia incana</i>	Silky Hemigenia	Mauve flower, very furry leaves		1			1
<i>Hibbertia ?hemignosta</i>						1	1
<i>Hibbertia elegans</i>		Priority 1				1	1
<i>Hibbertia hypericoides</i>	Yellow Buttercup		1	1	1	1	4
<i>Hibbertia sp.</i>		Large flower				1	1
<i>Hibbertia sp.</i>		prostrate shrub, grey green leaves, yellow flowers in bud			1		1
<i>Hovea chorizemifolia</i>	Holly-leaved Hovea	Holly leaves		1			1
<i>Hovea pungens</i>	Devils Pins	No flowers, in fruit	1	1	1	1	4
<i>Hypocalymma angustifolium</i>	Myrtle					1	1
<i>Isotropis ?juncea</i>	Slender Lamb Poison	Maybe <i>Isotropis cuneifolia</i>	1				1

Flora species lists

<i>Jacksonia sternbergiana</i>	Stinkwood				1		1
<i>Kennedia prostrata</i>	Running Postman, Scarlet Runner				1	1	2
<i>Lawrencella rosea</i>	Pink everlasting					1	1
<i>Lechenaultia biloba</i>	Blue Leschenaultia		1		1	1	3
<i>Lepidobolus preissianus</i>		Segmented sedge, Site 2 could be <i>Lyginia imberbis</i>	1	1	1		3
<i>Leptospermum ?erubescens</i>	Roadside Teatree?		1				1
<i>Leucopogon pulchellus</i>	Beard-heath	white hairy cross flowers	1	1		1	3
<i>Lomandra sp.?</i>	Matrush		1		1		2
<i>Lyginia imberbis</i>				1			1
<i>Macrozamia fraseri</i>	Zamia			1	1	1	3
<i>Melaleuca radula</i>	Graceful Honeymyrtle	White flower		1			1
<i>Melaleuca scabra</i>	Rough Honeymyrtle					1	1
<i>Mesomelaena ?tetragona</i>	Sedge	Unknown - Strappy - no flowers			1		1
<i>Mesomelaena preissii</i>	Sedge			1	1		2
<i>Mesomelaena sp.</i>		in pic w Red Ink Drosera	1				1
<i>Mirbelia spinosa</i>	Spiny Mirbelia	Pea, prickly like <i>Acacia pulchella</i>		1			1
Myrtaceae sp.		STABM?		1			1
Myrtaceae sp.		red/brown flower?			1		1
Myrtaceae sp.		wiry ground <i>Grevillea?</i>			1		1
<i>Neurachne alopecuroidea</i>	Foxtail Mulga Grass		1	1	1	1	4
<i>Olearia rudis</i>	Rough Daisybush or Azure Daisy Bush		1	1	1	1	4
<i>Opercularia vaginata</i>	Dog Weed		1		1	1	3
<i>Orthrosanthus laxus</i>	Morning iris		1	1			2
<i>Petrophile serruriae</i>	Coneflower			1	1		2
<i>Petrophile striata</i>	Sticky Petrophile	yellow flowers	1		1	1	3
<i>Pheladenia deformis</i>	Blue Beard or Blue Fairy Orchid			1			1
<i>Phyllanthus calycinus</i>	False Boronia		1	1	1	1	4
<i>Pimelea sp.</i>	Rice Flower				1		1
<i>Platysace cirrosa</i>	Karna				1		1
<i>Podolepis gracilis</i>	Slender Podolepis	white daisy Site 2, same in Site 1 but not in flower there	1	1			2



Flora species lists



<i>Prasophyllum hians</i>	Yawning Laughing Leek Orchid	grows to 50cm tall	1				1
<i>Pterostylis brevisepala</i>	Short-eared Snail Orchid					1	1
<i>Pterostylis recurva</i>	Jug Orchid	Some post flowering, forming seed.	1	1	1		3
<i>Pterostylis sp.</i>	Greenhoods	Finished, in Macrozamia		1			1
<i>Pterostylis sp.</i> - in the <i>Pterostylis vittata complex</i>	Banded Greenhood	After flowering	1		1		2
<i>Ptilotus manglesii</i>	Pom Poms. Mulla	Leaves only	1		1		2
<i>Pyrorchis nigricans</i>	Red Beak Orchid	Leaves only		1			1
Restionaceae sp.		sedge 1				1	1
Restionaceae sp.		sedge 2				1	1
Restionaceae sp.		sedge 3				1	1
<i>Santalum acuminatum</i>	Quandong		1		1		2
<i>Sowerbaea laxiflora</i>	Purple Tassels				1		1
<i>Sphaerolobium medium</i>			1				1
<i>Stackhousia pubescens</i>	White Candles, Downy Stackhousia			1	1	1	3
<i>Stylidium affine</i>	Queen Triggerplant	Thick strappy plant in bud	1				1
<i>Stylidium androsaceum</i>	Book Triggerplant	No basal leaf		1			1
<i>Stylidium bindoon</i>	like Common Butterfly Triggerplant	cream yellow flower, common at most sites	1	1	1	1	4
<i>Stylidium cilium</i>		leaves only, little green soft spiky tufts	1	1	1	1	4
<i>Stylidium sp.</i>		possibly pink butterfly				1	1
<i>Stylidium sp. ?repens</i>	Matted Triggerplant	or <i>S. adpressum</i> Trigger-on-stilts	1				1
<i>Stylidium tenue subsp. majusculum</i>	Showy Fountain Triggerplant	pink flower spike, most not in flower some in bud, green stalks with buds	1		1	1	3
<i>Stypandra glauca</i>	Bling Grass or Nodding Blue Lily		1	1	1		3
<i>Styphelia pallida</i>	Kick Bush	white flower (was <i>Astroloma pallidum</i>)	1	1	1		3
<i>Styphelia sp.</i>		Red flower (was <i>Astroloma sp.</i>)		1			1



Flora species lists



<i>Styphelia sp.</i>		was <i>Astroloma sp.</i>				1	1
<i>Styphelia tenuiflora</i>	Common Pinheath	green buds, 3 pics with fruit	1				1
<i>Synaphea grandis</i>	Priority 4 (poorly known)	flat blue green leaves with yellow flower spikes				1	1
<i>Templetonia drummondii</i>	Yellow flowered pea	Yellow climbing sprawling pea			1		1
<i>Tetratecha confertifolia</i>	Pink Eyes, Pink Bells or native Black Eyed Susan		1	1	1	1	4
<i>Tetratecha pilifera</i>	Priority 3 (poorly known)	dark green ovate leaves		1			1
<i>Thysanotus manglesianus or patersonii</i>	Fringe Lily	Small sprawling	1		1	1	3
<i>Trachymene pilosa</i>	Native Parsnip	white flower	1	1	1	1	4
<i>Trachymene ornata</i>	Spongefruit	white spongy, tiny plant growing on laterite	1				1
<i>Tripterococcus brunonis</i>	Winged Stackhousia	Stackhousia like – yellow	1		1	1	3
<i>Trymalium ledifolium var. lineare</i>	Thin-leaved Trymalium or Soap Bush	long thin leaves	1	1		1	3
<i>Waitzia sp. ?</i>		Everlasting - white flower, in bud		1			1
<i>Xanthorrhoea drummondii</i>	Drummond's Balga			1			1
<i>Xanthorrhoea sp.</i>	Grass Tree					1	1
<i>Xerochrysum macranthum</i>	Golden everlasting	large bright yellow paper flowers		1			1
			77	92	73	76	

Fungi and Lichen							
<i>Coltricia cinnamomea</i>	Cinnamon fungus					1	1
	Lichen	ground-hugger mossy lichen		1			1





Flora species

FLORA WALK - SITE 1 - SOUTH EAST - OPEN WANDOO WOODLAND



Anigozanthos humilis
Catspaw
Photo: Andrew Hunter



Banksia fraseri
Photo: Kylie Payne



Banksia polycephala
Many-headed Dryandra
Photo: Kylie Payne



Borya sphaerocephala
Pincushions or Resurrection Plant
Photo: Kylie Payne



Bossiaea eriocarpa
Common Brown Pea
Photo: Kylie Payne



Caladenia flava - Cowslip Orchid
And *Neurachne alopecuroidea*
Foxtail Mulga Grass
Photo: Kylie Payne



Caladenia longicauda subsp. emimens
Stark White Spider Orchid
Photo: Kylie Payne



Calandrinia ?granulifera
Pygmy Purslane
Photo: Kylie Payne



Conostylis setigera
Bristly Cottonhead
Photo: Kylie Payne



Flora species

FLORA WALK - SITE 1 - SOUTH EAST - OPEN WANDOO WOODLAND



Cryptandra arbutiflora
Waxy Cryptandra



Cryptandra nutans
Photo: Kylie Payne



Cyanicula gemmata
Blue China Orchid
Photo: Andrew Hunter



Dampiera lavandulacea
Photo: Kylie Payne



Dampiera lindleyi
Photo: Andrew Hunter



Drosera erythrorhiza
Red Ink Sundew
Photo: Kylie Payne



Gastrolobium ?spatulatum
Poison Bush
Photo: Kylie Payne



Gompholobium marginatum
Wedge pea
Photo: Kylie Payne



Grevillea synapheae
Catkin Grevillea
Photo: Kylie Payne



Flora

FLORA WALK - SITE 1 - SOUTH EAST - OPEN WANDOO WOODLAND



Hibbertia hypericoides
Yellow Buttercups
Photo: Kylie Payne



Isotropis juncea
Slender Lamb Poison
Photo: Kylie Payne



Lechenaultia biloba
Blue Leschenaultia
Photo: Kylie Payne



Lechenaultia biloba
Blue Leschenaultia
Photo: Kylie Payne



Leucopogon pulchellus
Beard Heath
Photo: Kylie Payne



Olearia rudis
Rough Daisybush
Photo: Kylie Payne



Orthrosanthus laxus
Morning Iris
Photo: Kylie Payne



Petrophile striata
Sticky Petrophile
Photo: Kylie Payne



Prasophyllum hians
Yawning Leek
Orchid
Photo: Kylie Payne



Flora

FLORA WALK - SITE 1 - SOUTH EAST - OPEN WANDOO WOODLAND



Ptilotus manglesii
Pom poms
Photo: Kylie Payne



Santalum acuminatum
Quandong
Photo: Kylie Payne



Sphaerolobium medium
Photo: Kylie Payne



Stylium bindoon
Photo: Kylie Payne



Stylium tenue subsp. majusculum
Showy Fountain Triggerplant
Photo: Kylie Payne



Stypandra glauca
Nodding Blue Lily or Blind Grass
Photo: Kylie Payne



Trachymene ornata - Spongefruit
and *Calandrinia ?granulifera*
Photo: Kylie Payne



Styphelia tenuiflora
Pinheath
Photo: Kylie Payne



Tetratheca confertifolia
Pink-eyes
Photo: Kylie Payne



Tripterococcus brunonis
Winged
Stackhousia
Photo: Kylie Payne



Flora

FLORA WALK - SITE 2 - CENTRAL - LATERITE RIDGE



Acacia pulchella
Prickly Moses
Photo: Kylie Payne



Acacia urophylla
Veined or Pointed-leaved Wattle
Photo: Rachel Walmsley



Banksia dallanneyi
Couch Honeypot
Photo: Kylie Payne



Bossiaea spinescens
Photo: Kylie Payne



Caladenia denticulata subsp. denticulata
Yellow Spider Orchid
Photo: Kylie Payne



Caladenia denticulata subsp. rubella
Clumped Spider Orchid
Photo: Kylie Payne



Caladenia longicauda subsp. eminens
Stark White Spider Orchid
Photo: Kylie Payne



Caladenia longicauda subsp. eminens
Stark White Spider Orchid
Photo: Kylie Payne



Calytrix variabilis
Purple Starflower
Photo: Dannielle Reed



Flora

FLORA WALK - SITE 2 - CENTRAL - LATERITE RIDGE



Comesperma volubile
Love Creeper
Photo: Rachel Walmsley



Dampiera lavandulacea
Photo: Kylie Payne



Daviesia angulata
Bitter Pea
Photo: Kylie Payne



Dillwynia laxiflora
Photo: Kylie Payne



Diuris corymbosa
Donkey Orchid
Photo: Andrew Hunter



Drosera ?macrantha
Climbing Sundew
Photo: Kylie Payne



Grevillea pilulifera
Photo: Dannielle Reed



Grevillea umbellata
Photo: Kylie Payne



Hakea erinacea
Hedgehog or Porcupine Hakea
Photo: Kylie Payne



Flora

FLORA WALK - SITE 2 - CENTRAL - LATERITE RIDGE



Hakea lissocarpa
Honey Bush
Photo: Rachel Walmsley



Hemigenia incana
Photo: Kylie Payne



Leucopogon pulchellus
Beard Heath
Photo: Kylie Payne



Macrozamia fraseri
Zamia
Photo: Kylie Payne



Diuris sp. and *Pterostylis* sp.
growing in *Macrozamia fraseri*
Orchids growing in Zamia
Photo: Kylie Payne



Melaleuca radula
Graceful Honeymyrtle
Photo: Rachel Walmsley



Mesomelaena preissii
Sedge
Photo: Kylie Payne



Mirbelia spinosa
Photo: Dannielle Reed



Olearia rudis
Rough Daisybush
Photo: Rachel Walmsley



Flora

FLORA WALK - SITE 2 - CENTRAL - LATERITE RIDGE



Petrophile serruriae
Photo: Kylie Payne



Pheladenia deformis
Blue fairy orchid or Blue Beard
Photo: Kylie Payne



Phyllanthus calycinus
False Boronia
Photo: Dannielle Reed



Podolepis gracilis
Slender Podolepis
Photo: Kylie Payne



Pterostylis recurva
Jug Orchid
Photo: Kylie Payne



Stackhousia pubescens
Downy Stackhousia
Photo: Kylie Payne



Stylidium bindoon
Triggerplant
Photo: Kylie Payne



Stylidium cilium
Photo: Kylie Payne



Stylidium androsaceum
Book Triggerplant
Photo: Kylie Payne



Flora

FLORA WALK - SITE 2 - CENTRAL - LATERITE RIDGE



Tetratheca confertifolia
Photo: Rachel Walmsley



Tetratheca pilifera
Priority 3 species (poorly known — needs further survey)
Photo: Rachel Walmsley



Tetratheca pilifera
Priority 3
Photo: Kylie Payne



Trymalium ledifolium var. *lineare*
Thin-leaved Trymalium or Soap Bush
Photo: Dannielle Reed



Unknown
Gompholobium sp?
Photo: Kylie Payne



Xanthorrhoea drummondii
Drummond's Balga
Photo: Kylie Payne



Landscape:
Eucalyptus Wandoo and
Xanthorrhoea drummondii
Photo: Rachel Walmsley



Xerochrysum macranthum
Golden Everlasting
Photo: Andrew Hunter



Flora

FLORA WALK - SITE 3 - WEST- OPEN WANDOO WOODLAND



Acacia leptospermoides
subsp. *leptospermoides*
Photo: Kylie Payne



Acacia pulchella
Prickly Moses
Photo: Dannielle Reed



Allocasuarina humilis
Dwarf Sheoak
Photos: Andrew Hunter



Anigozanthos humilis
Catspaw
Photo: Kylie Payne



Banksia dallanneyi
Couch Honeypot
Photo: Dannielle Reed



Banksia squarrosa
Pingle
Photo: Dannielle Reed



Banksia fraseri
Photo: Kylie Payne



Borya sphaerocephala
Resurrection Plant or
Pin Cushions
Photo: Kylie Payne



Caladenia flava
Cowslip Orchids
Photo: Kylie Payne



Caladenia longicauda
subsp. *eminens*
Stark White Spider Orchid
Photo: Andrew Hunter



Flora

FLORA WALK - SITE 3 - WEST- OPEN WANDOO WOODLAND



Chamaescilla corymbosa
Blue Squill
Photo: Kylie Payne



Conostylis setigera
Bristly Cottonhead
Photo: Kylie Payne



Conostylis setigera
Bristly Cottonhead
Photo: Kylie Payne



Dampiera lavandulacea
Photo: Kylie Payne



Dampiera lavandulacea
Photo: Kylie Payne



Dillwynia laxiflora
Parrot Pea
Photo: Kylie Payne



Drosera ?macrantha
Bridal rainbow
Photo: Kylie Payne



Drosera ?macrantha
Photo: Kylie Payne



Ericksonella saccharata
Sugar Orchid
Photo: Andrew Hunter



Flora

FLORA WALK - SITE 3 - WEST- OPEN WANDOO WOODLAND



Ericomyrtus tenuior
Photo: Kylie Payne



Eucalyptus wandoo
Wandoo
Photo: Kylie Payne



Gompholobium marginatum
Wedge Pea
Photo: Kylie Payne



Goodenia sp.
Photo: Sharon Lewis



Grevillea synapheae
Catkin Grevillea
Photo: Sharon Lewis



Hibbertia sp. ?
Photo: Kylie Payne



Hibbertia hypericoides
Yellow Buttercups
with *Drosera sp.*
Photo: Kylie Payne



Hibbertia hypericoides
Yellow Buttercups
Photo: Sharon Lewis



Hovea pungens
Devils Pins
Photo: Kylie Payne



Flora

FLORA WALK - SITE 3 - WEST- OPEN WANDOO WOODLAND



Lechenaultia biloba
Blue Leschenaultia
Photos: Kylie Payne



Lechenaultia with *Drosera*



Lechenaultia biloba
Photo: Dannielle reed



Lechenaultia biloba with
Conostylis setigera





Flora

FLORA WALK - SITE 3 - WEST- OPEN WANDOO WOODLAND



Lepidobolus preissianus
Photo: Kylie Payne



Mesomelaena preissii
Sedge
Photo: Kylie Payne



Neurachne alopecuroidea
Foxtail Mulga Grass
Photo: Kylie Payne



Olearia rudis
Rough Daisybush or
Azure Daisy Bush
Photo: Dannielle Reed



Petrophile serruriae
Photo: Kylie Payne



Petrophile striata
Sticky Petrophile
Photo: Dannielle Reed



Stackhousia pubescens
White Candles or Downy
Stackhousia
Photo: Kylie Payne



Styliidium bindoon
Photo: Kylie Payne



Styliidium cilium
Photo: Kylie Payne



Flora

FLORA WALK - SITE 3 - WEST- OPEN WANDOO WOODLAND



Stylidium tenue subsp. majusculum
 Showy Fountain Triggerplant
 Photo: Kylie Payne



Stypandra glauca
 Blind Grass or Nodding Blue Lily
 Photo: Sharon Lewis



Styphelia pallida
 Kick Bush
 Photo: Kylie Payne



Templetonia drummondii
 Photo: Kylie Payne



Tetradlea confertifolia
 Photo: Kylie Payne



Thysanotus ?manglesianus
 Twining Fringe Lily
 Photo: Andrew Hunter



Trachymene pilosa
 Native Parsnip
 Photo: Kylie Payne



Unknown
 Photo: Kylie Payne



Unknown
 Photo: Kylie Payne

Flora

FLORA WALK - SITE 4 - NORTH – WANDOO MARRI WOODLAND



Acacia leptospermoides
subsp. *leptospermoides*
Photo: Neville Horner



Acacia pulchella
Prickly Moses
Photo: Neville Horner



Adenanthos cygnorum
Common Woollybush
Photo: Neville Horner



Allocasuarina humilis
Dwarf Sheoak
Photo: Neville Horner



Banksia nobilis subsp. *nobilis*
Golden Dryandra
Photo: Rachel Walmsley



Banksia nobilis subsp. *nobilis*



Billardiera sp.
Appleberry
Photo: Neville Horner



Banksia sessilis
Parrot Bush
Photo: Neville Horner



Photo: Neville Horner



Boronia ovata
Photo: Rachel Walmsley



Borya sphaerocephala
Pin Cushions
Photo: Neville Horner



Flora

FLORA WALK - SITE 4 - NORTH – WANDOO MARRI WOODLAND



Bossiaea eriocarpa
Common Brown Pea
Photo: Neville Horner



Caladenia flava
Cowslip Orchids
Photo: Neville Horner



Caladenia longicauda subsp. *eminens*
Stark White Spider Orchid
Photo: Neville Horner



Calytrix leschenaultii
Purple Starflower
Photo: Neville Horner



Coltricia cinnamomea
Cinnamon fungus
Photo: Neville Horner



Chamaescilla corymbosa
Blue Squill
Photo: Neville Horner



Conostylis setigera
Bristly Cottonhead
Photo: Neville Horner



Corymbia calophylla
Marri
Photo: Rachel Walmsley



Daviesia angulata
Photo: Neville Horner



Diuris corymbosa
Donkey Orchid
Photo: Neville Horner



Drosera erythrorhiza
Red Ink Sundew
Photo: Neville Horner



Drosera glanduligera
Pimperl Sundew
Photo: Neville Horner



Flora

FLORA WALK - SITE 4 - NORTH – WANDOO MARRI WOODLAND



Ericomyrtus tenuior
Photo: Neville Horner



Gastrolobium spinosum
Prickly Poison
Photo: Neville Horner



Glischrocaryon aureum
Common Popflower
Photo: Neville Horner



Goodenia ?pusilliflora
Photo: Neville Horner



Grevillea synapheae
Catkin Grevillea
Photo: Neville Horner



Hakea ruscifolia
Photo: Neville Horner



Hibbertia elegans
Priority 1 species
Photo: Neville Horner



Hibbertia hemignosta
Photo: Neville Horner



Hibbertia hypericoides
Yellow Buttercups
Photo: Neville Horner



Hypocalymma angustifolium
White myrtle
Photo: Neville Horner



Lawrencella rosea
Pink everlasting
Photo: Rachel Walmsley



Lechenaultia biloba
Blue Leschenaultia
Photo: Neville Horner



Flora

FLORA WALK - SITE 4 - NORTH – WANDOO MARRI WOODLAND



Leucopogon pulchellus
Beard Heath
Photo: Neville Horner



Petrophile striata
Sticky Petrophile
Photo: Neville Horner



Phyllanthus calycinus
False Boronia
Photo: Neville Horner



Pterostylis brevisepala
Short-eared Snail
Orchid



Stackhousia pubescens
White Candles/ Downy Stackhousia
Photo: Neville Horner



Stylium bindoon
Photo: Neville Horner



Stylium cilium
Photo: Neville Horner



Stylium tenue subsp. majusculum
Showy Fountain Triggerplant
Photo: Neville Horner



Synaphea grandis (Priority 4)
Photo: Neville Horner



Tetratheca confertifolia
Photo: Neville Horner



Tripterococcus brunonis
Winged Stackhousia
Photo: Neville Horner



Trymalium ledifolium var. lineare
Thin-leaved Trymalium or Soap Bush
Photo: Neville Horner



Birds

42 species of bird were spotted around Carrah Farms over the weekend. Phil Lewis and Wayne O’ Sullivan led the birding groups.

Bird report by Wayne O’ Sullivan

“We did two sorts of bird surveys at Carrah. The most common were area surveys, where a patch was surveyed for whatever time was available. This allows time to photograph, admire, and discuss the birds and their habits. It’s also a nice easy introduction to birding for those with less experience. Additionally, we did some more specific 2ha 20 minute surveys, a more formal methodology, with the surveys matched to GPS locations. These surveys have gone onto the BirdLife database and the locations can be resurveyed over coming years to give a snapshot of change over time.



While the diversity we saw in the 24 hours is impressive in its own right, what that diversity tells about the state of the property, and what this in turn implies of the management is a salient lesson. Birds can be used to indicate more than gas in coal mines, and their presence, absence, and abundance can all tell tales of state of the ecology. Take and apply the theories of intactness and connectivity, diversity of plants and habitats, diligent and persistent control of introduced predators and see what happens. This appears to be the Carrah Farm story, where we are seeing not just a fantastic number of species, but a range of birds with quite different requirements, including big numbers of birds considered vulnerable to change, declining conditions and predation. This was probably the highlight for me, to see big mixed flocks of small birds travelling together through the bush.” Wayne



Photo: N Horner

Yellow-rumped Thornbill
(*Acanthiza chrysorrhoa*)

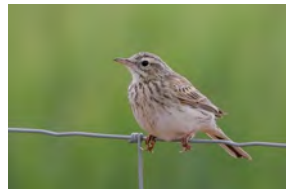


Photo: N Horner

Australian Pipit
(*Anthus australis*)

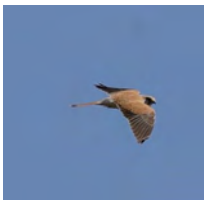


Photo: N Horner

Nankeen Kestral
(*Falco cenchroides*)



Photo: N Horner

Rufous Whistler
(*Pachycephala rufiventris*)

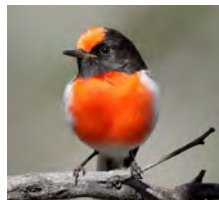


Photo: N Horner

Scarlet Robin
(*Petroica boodang*)



Photo: N Horner

Elegant Parrot
(*Neophema elegans*) 33

Additional information

Species	1	2	3	4	5
Australian Magpie (<i>Cracticus tibicen</i>)	1		1		
Australian Owlet-nightjar (<i>Aegotheles cristatus</i>)					
Australian Pipit (<i>Anthus australis</i>)				2	1
Australian Raven (<i>Corvus coronoides</i>)	1	1		2	1
Australian Ringneck (<i>Barnardius zonarius</i>)	6	1		16	1
Black-faced Cuckooshrike (<i>Coracina novaehollandiae</i>)					
Brown Honeyeater (<i>Lichmera indistincta</i>)	37	1	1	10	1
Brown-headed Honeyeater (<i>Melithreptus brevirostris</i>)				3	1
Carnaby's Black Cockatoo (<i>Calyptorhynchus latirostris</i>)		1		2	1
Chestnut-rumped Thornbill (<i>Acanthiza uropygialis</i>)	1				
Common Bronzewing (<i>Phaps chalcoptera</i>)				8	
Dusky Woodswallow (<i>Artamus cyanopterus</i>)				2	
Eastern Barn Owl (<i>Tyto delicatula</i>)					
Elegant Parrot (<i>Neophema elegans</i>)					1
Galah (<i>Eolophus roseicapilla</i>)					
Grey Butcherbird (<i>Cracticus torquatus</i>)			1		
Grey Fantail (<i>Rhipidura albiscapa</i>)			1		
Grey Teal (<i>Anas gracilis</i>)					
Grey Shrikethrush (<i>Colluricincla harmonica</i>)	1	1		2	1
Inland Thornbill (<i>Acanthiza apicalis</i>)					
Laughing Kookaburra (<i>Dacelo novaeguineae</i>)	1				
Nankeen Kestrel (<i>Falco cenchroides</i>)					



Photo: P Lewis

Black-faced Cuckooshrike
(*Coracina novaehollandiae*)

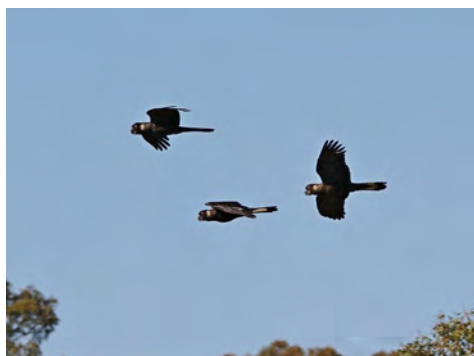


Photo: P Lewis

Carnaby's Black Cockatoo
(*Calyptorhynchus latirostris*)

Additional information

6	7	8	9	10	11	12	13	14	15	16	17	Species tally
2						4	1	3	3		2	17
												1
		1				3						7
				3		2			2			12
5	1	4	2	11	4	15	5	4	4		5	84
												1
8	9	3	2	7	3	6	5	10	5	6	20	134
		2					2					8
							2	8	2	1	8	25
												1
					1	1			1			11
												2
												1
						2						3
						2	4					6
							1					2
3						3		1	3	2	4	17
											2	2
		2							1			8
						1						1
						3	3	1	1		2	11
	2											2



Photo: N Horner

Varied Sitella
(Daphoenositta chrysoptera)



Photo: P Lewis

Common Bronzewing
(Phaps chalcoptera)

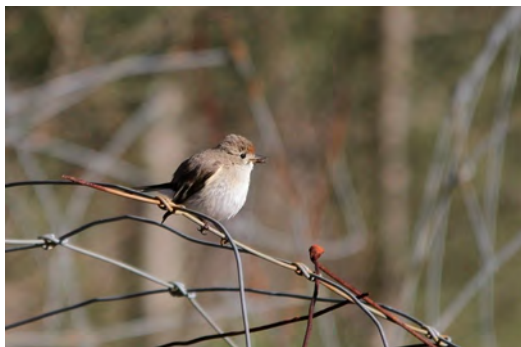
Additional information

Species	1	2	3	4	5
Quail (<i>probably</i> Stubble Quail <i>Coturnix pectoralis</i> ??)					
Quail (possibly painted button Quail <i>Turnix varius</i> ??)					
Red Wattlebird (<i>Anthochaera carunculata</i>)					
Red-capped Parrot (<i>Purpureicephalus spurius</i>)				6	
Red-capped Robin (<i>Petroica goodenovii</i>)	6				1
Rufous Whistler (<i>Pachycephala rufiventris</i>)	4	1		1	1
Scarlet Robin (<i>Petroica boodang</i>)					1
Silvereye (<i>Zosterops lateralis</i>)				10	1
Singing Honeyeater (<i>Gavicalis virescens</i>)					
Southern Boobook (<i>Ninox boobook</i>)	1				
Splendid Fairywren (<i>Malurus splendens</i>)	3				
Striated Pardalote (<i>Pardalotus striatus</i>)	6		1	1	
Varied Sitella (<i>Daphoenositta chrysoptera</i>)					
Weebill (<i>Smicrornis brevirostris</i>)	7			1	
Welcome Swallow (<i>Hirundo neoxena</i>)					
Western Gerygone (<i>Gerygone fusca</i>)	8	1	1	4	1
Western Thornbill (<i>Acanthiza inornata</i>)	4				
White-cheeked Honeyeater (<i>Phylidonyris niger</i>)				30	1
Yellow-plumed Honeyeater (<i>Ptilotula ornata</i>)	3			2	
Yellow-rumped Thornbill (<i>Acanthiza chrysorrhoa</i>)	4				1
Site tally	95	7	6	102	15



Dusky Woodswallow (*Artamus cyanopterus*)

Photo: P Lewis



Red-capped Robin (*Petroica goodenovii*)

Female

Photo: P Lewis



Additional information



6	7	8	9	10	11	12	13	14	15	16	17	Species tally
							2					2
			2									2
		1										1
												6
2				1		2	4		1	3		20
								1		1	1	10
												1
5	2					3					2	23
2												2
												1
1						2		1		1	4	12
				3	1	8	2	2	2	1	4	31
						2						2
				9	2	8	8	8	3	3	5	54
												1
4	2		1	1	1	5	1	3	2	3	40	78
												4
	2	3	3			11						50
												5
			2	1		12		4				24
32	18	16	12	36	12	95	40	46	30	21	99	686



Red-capped Robin (*Petroica goodenovii*)

juvenile Photo: P Lewis



Yellow-plumed Honeyeater (*Ptilotula ornata*)

Photo: P Lewis

Insects

44 species of insect were spotted at Carrah Farms over the weekend. Dilanka Mihindukulasooriya led the insect groups. Sites surveyed included creek riparian vegetation and woodland around the Bioblitz headquarters.

A mixture of insect spotting/trapping methods were used including makeshift pit fall traps, white sheet under trees, sieving soil and looking under logs/rocks.

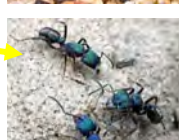


*Report by Dilanka
Mihindukulasooriya*

Assessment of full species composition can be challenging when data for evaluation are absent or limited. Limitations may include any of the following:

- Poor survey coverage, e.g. the fauna of an area has not been sampled extensively enough to enable assessment of species distributions. The absence of a species from survey records may not mean that it is absent from the area.
- Poor taxonomic resolution, e.g. a species has not been subject to systematic investigation, and/or the identity is either difficult or impossible to determine. Good taxonomic resolution does not necessarily need to be in the form of published revisions, as it can be facilitated by any of the following:
 - a researcher actively working on the group who can authorise identifications,
 - a publicly accessible reference collection, and/or;
 - assessment of species boundaries using genomic methods such as DNA barcoding.
- Identification issues, e.g. surveys sampled life stages of invertebrates that are impossible to identify based on morphological characters. Genomic methods have great potential to overcome this type of limitation.

Class	Order	Family	Species
Arachnida	Araneae	Badumna	Badumna sp 01
Arachnida	Araneae		Banded Garden Spider
Arachnida	Araneae		Crab spider
Arachnida	Araneae		Daddy Long-leg spider
Arachnida	Araneae		Huntsman spider
Arachnida	Scorpiones		Scorpiones sp 01
Arachnida	Scorpiones		Scorpiones sp 02
Arachnida			Pseudoscorpion
Insecta	Blattodea	Blattodea	<i>Periplaneta americana</i> (American Cockroach)
Insecta	Blattodea	Blattodea	<i>Periplaneta fuliginosa</i>
Insecta	Blattodea		Isoptera sp 01
Insecta	Blattodea		Isoptera sp 02
Insecta	Coleoptera	Carabidae	Carabidae sp 01
Insecta	Coleoptera	Carabidae	Carabidae sp 02
Insecta	Coleoptera	Carabidae	Carabidae sp 03
Insecta	Coleoptera	Carabidae	Carabidae sp 04
Insecta	Coleoptera	Chrysomelidae	Chrysomelidae sp 01
Insecta	Coleoptera	Cucujidae	Cucujidae sp 01
Insecta	Coleoptera	Curculionidae	Curculionidae sp 01
Insecta	Coleoptera	Curculionidae	Curculionidae sp 02
Insecta	Dermaptera	Anisolabididae	Anisolabididae sp 01
Insecta	Hemiptera	Cicadidae	Cicadidae sp 01
Insecta	Hemiptera	Cicadidae	Cicadidae sp 02
Insecta	Hemiptera	Coreidae	Coreidae sp 01
Insecta	Hemiptera	Coreidae	Coreidae sp 02
Insecta	Hymenoptera	Apidae	Apidae sp 01
Insecta	Hymenoptera	Apidae	Apidae sp 02
Insecta	Hymenoptera	Apidae	Apidae sp 03
Insecta	Hymenoptera	Formicidae	<i>Camponotus terebrans</i> (Lowne)
Insecta	Hymenoptera	Formicidae	<i>Iridomyrmex bicknelli</i> Emery
Insecta	Hymenoptera	Formicidae	<i>Iridomyrmex chasei</i> Forel
Insecta	Hymenoptera	Formicidae	<i>Iridomyrmex discors</i> Forel
Insecta	Hymenoptera	Formicidae	<i>Iridomyrmex purpureus</i> (F.Smith)
Insecta	Hymenoptera	Formicidae	<i>Myrmecia gulosa</i>
Insecta	Hymenoptera	Formicidae	<i>Ochetellus glaber</i> (Mayr)
Insecta	Hymenoptera	Formicidae	<i>Rhytidoponera metallica</i> (F.Smith)
Insecta	Hymenoptera	Vespidae	Vespidae sp 01
Insecta	Mantodea	Amorphoscelidae	<i>Paraoxyphilus tasmaniensis</i>
Insecta	Orthoptera	Acrididae	Acrididae sp 01
Insecta	Orthoptera	Pyrgomorphidae	Pyrgomorphidae sp 01
Insecta	Orthoptera	Stenopelmatidae	Stenopelmatidae sp 01
Insecta	Orthoptera		Black Field Cricket
Insecta	Orthoptera		Katydid
Insecta	Phthiraptera		Phthiraptera sp 01





Attendees

Elaine Hall
 Max Howard
 Matt Fossey
 Chrissie Fossey
 Ruby Fossey
 Heidi Fossey
 Sam Fossey
 Dilanka Mihindukulasooriya
 Ross McGillivray
 Martha Simpson
 Jenna Brooker
 Veronica Metcalf
 Toby Metcalf
 Felix Metcalf
 Abby Metcalf

John Masters
 Murray Blyth
 Glenda Blyth
 Wayne O'Sullivan
 Rena O'Sullivan
 Neville Horner
 Kylie Payne
 Dannielle Reed
 Sarah Rule
 Samantha Lock
 Beth Bose
 Rob Bose
 Jenny Irwin
 Phil Lewis
 Sharon Lewis

Adele Scarfone
 Ebonie Scarfone
 Phoenix Scarfone
 Andrew Hunter
 Graham Johnson
 Jean Dorrington
 Tracy Sievwright
 Aaron Manning
 Eilidh Manning
 Rachel Walmsley
 Sarah Mason
 Jeanette Masters
 Geoff Mason
 Clinton Richter
 Joe Tonga



Photos



Photos



Photos



Photo K Payne



Photo K Payne



Photo K Payne



Photo K Payne

Bioblitz

Saturday 5th & Sunday 6th September 2020

Carrah Farms, Western Australia

Many thanks to everyone who helped make this event a success. To Sarah and Geoff Mason for being gracious hosts, to the group leaders for their guru skills and contributions to this report, to the sponsors - State NRM Program for their funding and Moora Citrus for the oranges, and to all the participants who came along, had fun and got stuck in - hope you enjoyed it !!!



For further information regarding this event or any questions, please contact Rachel Walmsley at Moore Catchment Council on 0409 296 264 or mcc.nrmo@bigpond.com

More information about Carrah Farms, please visit <http://www.carrah.com.au/>

More information about Moore Catchment Council please contact on

9653 1355 or moorecc@bigpond.com

www.moorecatchment.org.au

Guide based on Bunjil Rocks Bioblitz 2017 guide. All photos by R Walmsley unless otherwise indicated