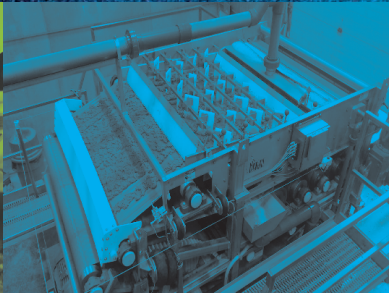





wwett22

WWETT SHOWCASE PRODUCT PREVIEW

» www.colepublishing.com/2022WWETT «



SPONSORED BY:

Cleaner

digDIFFERENT

I&I

MUNICIPAL
SEWER & WATER

ONSITE
installer.

Plumber

PRO
PORTABLE RESTROOM OPERATOR

Pumper

TREATMENT PLANT OPERATOR
tpo

PRSTD STD
 U.S. POSTAGE
 PAID
 COLE
 PUBLISHING INC

GENERAL PIPE CLEANERS

GEN-EYE X-POD PLUS SEWER CAMERA

The new Gen-Eye X-POD Plus sewer camera system from General Pipe Cleaners includes the Gen-Pack battery adapter, Wi-Fi transmitter and an on-screen distance counter as standard equipment.

The Gen-Pack battery adapter lets you operate the camera system for up to 12 hours in remote locations with limited access to power. Fuse-protected to safeguard your equipment investment, the Gen-Pack battery adapter is also available separately. Battery and charger not included.

X-POD Plus makes sharing inspections easy. The built-in Wi-Fi transmitter lets you view and record inspections on your cell phone. And using the system's USB port, you can also archive activity on handy flash drives.

The new on-screen distance counter also shows how far the camera has travelled down a line in feet or meters. And for optimum accuracy, settings can be adjusted for full size or mini-reel configurations.

General's powerful X-POD Plus Command Module packs other standard features, too – including a big 7-inch LCD color monitor with a sunscreen for easy viewing in any location, one-touch recording for speed and convenience, 4x digital zoom for close-up inspections, voiceover recording for job site commentary and a date-and-time stamp for work documentation.



The full size X-POD features a self-leveling color camera and 200 feet of Gel-Rod for inspecting 3- to 10-inch drainlines. The compact Mini-Reel carries 100 feet or 200 feet of Gel-Rod with a mini color self-leveling camera for 2- and 4-inch lines.

General
PIPE CLEANERS

800-245-6200 | 412-771-6300 | www.drainbrain.com/xpodplus

BOOTHS 5363 AND 5365

2022 WWETT SHOWCASE PRODUCT PREVIEW

INTRODUCING THE NEXT GENERATION FLEXIBLE SHAFT MACHINE



Flexi-Rooter®



Chain Cutter
with Clog Chopper

General has rethought high-speed, flexible shaft machines. The stronger, stiffer rod lets you clean a wider range of drain lines, up to 75 feet long. It's flexible enough to negotiate 2" lines yet tough enough to clear roots in 4" lines.

General's unique ClogChopper® cutter in combination with the carbide tipped chain cutter makes a formidable combination, capable of clearing the toughest stoppage.

The built-in variable speed motor with foot pedal control makes the machine easier to operate. And the rod is field repairable. It's everything a flexible shaft machine should be.

To learn more, visit www.drainbrain.com/FlexiRooter, or call the Drain Brains® at 800-245-6200



MADE IN U.S.A. © 2021 General Wire Spring

The toughest tools down the line.™ **General
PIPE CLEANERS**

Advertisers

Bright Technologies, Division of Sebright Products, Inc.	15
Cam Spray	17, 27
CPI Products / Cavallero Plastics	21
Dynablast	29
General Pipe Cleaners, div. of General Wire Spring	3
General Pump	11
Guzzler Manufacturing	45
HammerHead Trenchless	19
Hermann Sewerin GmbH	31
HotJet USA	83
Howden	47
LightRay	33
NuFlow Technologies	49
RIDGID	13
Rival Hydrovac Inc.	9
RootX	84
ScreencO Systems LLC	25
Subsite Electronics	7
Super Products LLC	23
TRUVAC by Vactor Manufacturing, Inc.	37
Vac-Con, Inc.	35
Vactor Manufacturing	43
Vacuum Truck Rentals, LLC	41
WinCan	39

Product Showcases

AllMax Software, Inc.	56
Arthur Products Co.	60
Ashland Pump	73
Bright Technologies, Division of Sebright Products, Inc.	14
Cam Spray	16, 26
Cherne	65
Comet Pumps	71
CPI Products / Cavallero Plastics	20
CrewPlex	75
CUES, Inc.	58
Duracable Manufacturing Co.	67
Dynablast	28
GapVax, Inc.	52
General Pipe Cleaners, div. of General Wire Spring	2
General Pump	10
Guzzler Manufacturing	44
HammerHead Trenchless	18
Hermann Sewerin GmbH	30
HotJet USA	82
Howden	46
Imperial Industries, Inc.	61
LightRay	32
MyTana LLC	69
NTS (National Trench Safety)	64
NuFlow Technologies	48, 50, 51
Picote Solutions	54
Reed Manufacturing	57
RIDGID	12
Ritam Technologies, LLC	53
Rival Hydrovac Inc.	8
Roll-n-Vac Truebite Inc.	70
RootX	5
Satellite Industries	68
ScreencO Systems LLC	24
Sealing Systems, Inc.	66
SJE Rhombus®	55
SmartVac Hydrovac	72
Subsite Electronics	6
Super Products LLC	22
The Strong Company, Inc.	74
TRUVAC by Vactor Manufacturing, Inc.	36
USB-USA	62
Vac-Con, Inc.	34
Vactor Manufacturing	42
Vacuum Truck Rentals, LLC	40
Vivax-Metrotech Corp.	63
WinCan	38

ROOTX

ROOT AND GREASE CONTROL PRODUCTS

The RootX Co. has been providing root and grease control products to municipalities and drain cleaning professionals for 25 years. RootX prides itself on manufacturing and distributing effective and user-friendly root and grease control products. Utilizing RootX and Grease-X will restore pipe-flow capacity and reduce costly sanitary sewer overflows.

RootX's patented foaming root control products are packaged in 2- and 4-pound jars for 4- and 6-inch lines and 40-pound boxes for 8-inch and larger mainlines and manholes.

RootX foams on contact with water, allowing it to reach the top of the pipe where 90% of the root intrusion occurs. These products can easily be applied directly from the package into sewer lines and septic systems, or you can utilize the Foam Dispersal Unit with your existing jetting equipment to more effectively treat longer lengths of 8-inch and larger pipes.

RootX's Grease-X line of products are designed to eliminate fats, oils and grease (better known as FOG) and to prevent further buildup and accumulations of grease in sewer lines. These products



are designed for immediate and long-term results. The Grease-X line of products are packaged in 5-gallon pails and include Grease-X Biozyme, Grease-X Jet, Grease-X Emulsifier and Grease-X Deodorizer. Grease-X Biozyme is also packaged in 2-pound jars for residential and light industrial applications.



800-844-4974 | rootx@rootx.com | www.rootx.com

BOOTH 6107

2022 WWETT SHOWCASE PRODUCT PREVIEW

SUBSITE ELECTRONICS

ARMORED SINCON CABLE



Designed to boost utility inspection productivity, the Subsite Armored SinCon Cable offers significant cost and performance advantages over multiconductor technology.

The Armored SinCon Cable is a single-conductor cable with multiconductor functionality to help inspectors ensure an efficient and reliable inspection. It can perform multiple functions at a time, including drive, pan, tilt and lift. Allowing inspection crews to complete each function needed with one system.

Built for durability, it features a strong CCTV cable break strength at 5,400 pounds. The ¼-inch outside diameter is wrapped with two layers of steel armor for increased protection.

To minimize downtime, the Armored SinCon Cable can be easily reterminated in the field, without the need for specialized tools, soldering or epoxy. This helps inspectors get back into operation quickly.

“Utility inspection technology has certainly evolved over the years. One change that shouldn’t be viewed as an advancement is the shift in preference toward multiconductor systems over single-conductor systems,” says Patrick Iyonsi, Subsite Utility Inspection product manager. “While many municipalities are considering this alternative, the truth is that today’s single-conductor systems are just as advanced as multiconductor technology.”

“A single-conductor system’s durability, multifunction capabilities, ease of repair and quick setup and breakdown can help decrease downtime and, in turn, increase profits. Inspection teams looking to boost productivity on their utility inspections should consider the benefits that single-conductor cables provide.”

For more information about the Armored SinCon Cable, visit www.subsite.com/products/inspection-systems/cable-and-cable-reels/armored-sincon-cable.



www.subsite.com

BOOTH 5209

2022 WWETT SHOWCASE PRODUCT PREVIEW

See What
You're Missing.



THAT'S UNDERGROUND AWARENESS.®

Our inspection technologies are ideal for pipelines too small to allow man entry, including water and wastewater collection and conveyance systems. Solutions include CCTV, sonar profiling, 3-D, and point cloud data capture.

Learn more at subsite.com.

 **SUBSITE**[®]
ELECTRONICS
subsite.com

RIVAL HYDROVAC

RIVAL T7 HYDROVAC



The Rival Hydrovac was a truck designed after many years of watching the growth in the hydroexcavation industry, and the equipment available. Given that the industry was born primarily in oil and gas pipeline and facility applications, the traditional equipment was powerful and robust but was not intended for use in urban environments. Rival designed its T7 model from the ground up focusing on what it thought needed to be adjusted given the changes in the applications for these units.

The driving factor in design was weight. Rival sought to design a truck that could be loaded with debris of a density that is in the range of normal for hydroexcavation and still be able to legally transport that load to disposal. To do that, the company had to make sacrifices in componentry and capacity while maintaining a high performance machine.

“We were not sure as to how the market would accept this approach, but we were pleasantly surprised that in many markets our assumptions were accurate,” says a company spokesperson. “Most of the larger units in these markets were being loaded to well under capacity for weight reasons, which in terms of productivity — it made our truck ‘bigger.’ We then added a scale with readouts in the cab and on the remote screen for instances where the water tanks have retained product or the material is unusual in density.”

The company finally simplified operation to one PTO switch and added tie-off spots, a grounding post and a retractable railing atop the truck to allow for safe access during servicing.



403-550-7997 | tdell@rivalhydrovac.com
www.rivalhydrovac.com

BOOTH 6421

2022 WWETT SHOWCASE PRODUCT PREVIEW

COST EFFECTIVE. EFFICIENT. LIGHTWEIGHT.



LIGHTWEIGHT



SAFETY FOCUS



EFFICIENT



SUPERIOR DESIGN



1-844-GO-RIVAL

Rival Hydrovac Inc.
Box 5, Major, SK S0L 2H0
rivalhydrovac.com

GENERAL PUMP

EVO-4 SERIES

General Pump's new EVO-4 series is the latest arrival from Interpump, a world leader of high pressure pumps. This innovative family of pumps offers flows up to 26 gpm and pressures up to 5,800 psi.

The strong but lightweight design is perfect for industrial mobile applications. Weighing in at just 65 pounds, the EVO-4 high-flow versions feature a rugged cast iron manifold and advanced polymer treatment that increases corrosion resistance up to 30 times more than untreated manifolds, specifically when exposed to salt mist or road spray.

The high-pressure versions (EV16/18) will feature a 420 stainless steel manifold with nickel plating for added corrosion resistance.

Standard features also include an anodized aluminum crankcase for optimum durability and weight. The sleek symmetrical crankcase makes left/right shaft conversion fast and easy. Drive options include a 28 mm solid keyed shaft or SAE B flange with a 13-tooth splined shaft.

Other technical features include:

- Integrated water-cooled packings, no greasing required



- Premium tapered roller bearings for stability and longevity
 - Oversized crankcase for increased oil capacity and cooler operating temperatures
 - Solid ceramic plungers with innovative fastening system
 - ATEX Category II certified upon request
- Consider the Evolution Series if you're looking for a machine to maximize profits and minimize downtime.
- General Pump is a subsidiary of the Interpump Group, a world leader in the manufacturing of high-pressure pumps.



GENERAL PUMP

888-474-5487 | www.generalpump.com

BOOTH 4839

2022 WWETT SHOWCASE PRODUCT PREVIEW

GENERAL Nobody Does it Better

The Result of Over
38 Years of Innovation

PUMP

**EVOLUTION
SERIES**



EV SERIES

**Flows to 24.8 GPM
Pressures to 3770**



Click: www.generalpump.com
Phone: 888.474.5487
Email: sales@gpcompanies.com
Address: 1174 Northland Drive, Mendota Heights, MN 55120



General Pump is a member of
The Interpump Group, The
Worlds Leader in Plunger Pumps



RIDGID

K9-306 FLEXSHAFT MACHINE



Purpose-built for the professional, the new RIDGID FlexShaft K9-306 quickly clears grease buildup, roots and heavy scale using 125 feet (38 meters) of 3/8-inch (10 mm) cable for 3- to 6-inch (75 to 50 mm) pipes with one step of the foot switch. It features a professional 1.5 hp (1,119 watt) internal universal motor powered with I-Clutch technology for maximum power and longevity, a fully enclosed drum to minimize setup and cleanup time, and a telescoping handle with multiple wheels and grab points to make loading, unloading, transporting and storage easy.

The K9-306 also offers increased productivity with faster setup and cleanup, quick cleaning, cordless convenience and easy transportation. It's wall-to-wall clean, as chain knockers expand for full pipe cleaning.

Simultaneous camera use allows users to inspect pipe while cleaning it out. A fully enclosed system gets you in and out of jobs quickly. A full range of chain knockers, brushes and accessories are available.

RIDGID®

www.ridgid.com

BOOTH 1141

2022 WWETT SHOWCASE PRODUCT PREVIEW

RIDGID

NEW

FlexShaft[®] MACHINES

WALL-TO-WALL CLEAN WITH ASTONISHING SPEED

**TALE
OF THE
TAPE**



K9-102

Pipe Size: 1¼" to 2"
Cable Length: 50 ft.

K9-204

Pipe Size: 2" to 4"
Cable Length: 70 ft.

K9-306

Pipe Size: 3" to 6"
Cable Length: 125 ft.

KNOCK OUT CLOGS IN 1¼" TO 6" LINES FASTER.

RIDGID[®] FlexShaft[®] Machines are fully contained systems that allow for simultaneous in-pipe camera use.
The latest addition – the K9-306 – clears drain lines up to 125'.

Learn more at RIDGID.COM/FLEXSHAFT

BRIGHT TECHNOLOGIES

DEWATERING SYSTEMS

Officials at a wastewater utility in Louisiana recently faced a sludge disposal problem and knew they couldn't afford to pay for 5,000-gallon tankers to haul it to a land application site.

But by using dewatering equipment by Bright Technologies, the utility was able to make a stackable, dry-solids cake that allows it to haul 30,000 gallons worth of sludge in a single 30-cubic-yard container.

Since roll-off trucks are less expensive and more fuel-efficient than semi tankers, each load costs less than a single tanker would have otherwise.

One of the key equipment features the utility praised is the sludge-retention manifold of looping pipes, which gives the polymer contact time and gentle mixing before it's introduced to the press. This is a unique feature to Bright Technologies skid-mounted belt press systems.

Belt filter press dewatering

Bright Technologies offers complete belt filter press dewatering systems that are skid or trailer mounted. The company designs and manufactures the skid equipment package for high throughput, low maintenance and superior cake solids.

The skid-mounted dewatering systems are designed with long-term value and ease of operation in mind. A stainless steel frame



and roller construction are included as standard features. An Allen Bradley touch-screen and programmable logic controller integrate the press and support equipment to accomplish unattended operation and easy integration into SCADA systems.

Bright Technologies, a division of Sebright Products Inc., manufactures high-quality recycling equipment as well as equipment for dewatering and solidification of wet materials. The company also offers integrated recycling and solids waste-disposal solutions through Sebright Products including hydraulic compactors, cart dumpers and custom waste carts.



800-253-0532 | www.sebrightproducts.com

BOOTHS 4521 AND 4620

2022 WWETT SHOWCASE PRODUCT PREVIEW

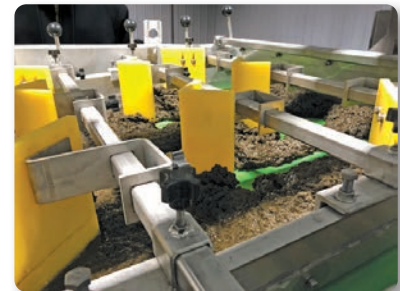


Belt filter presses featuring innovative features that provide high performance in a compact high value package.



Bright Technologies offers complete Belt Filter Press dewatering systems that are skid or trailer mounted.

We design and manufacture the skid equipment package for high throughput, low maintenance, superior cake solids and ease of operation.



Contact Us Today!
800-253-0532

127 N. Water St., Hopkins, MI 49328
www.brightbeltpress.com

CAM SPRAY

STB3012H DELUXE TRAILER-MOUNTED DRAIN JETTER



This 3,000 psi trailer-mounted drain jetter includes a Honda 800CC EFI gasoline engine with oil alert and hour meter, powering a gearbox-driven plunger pump with ceramic plungers, stainless steel valves, pressure gauge and 80-mesh water filter.

The pump is protected by an unloader valve and secondary pop-off. The jetter has a power pulse feature for navigating longer runs and elbows. A DC-powered reel with jet hose has 2-1 clutch for perfect retraction speed and a foot switch for hands-free operation.

The industrial coated trailer has 15-inch aluminum wheels, a 5,000-pound axle, electric brakes, 2-inch ball hitch, retractable tongue, rear-mounted lockable tool storage boxes and a 50-foot washdown hose with pressure wash gun and nozzle.

A safety strobe light, tiger tail, bullet and milling nozzle with storage box and tip cleaner, toolbox, safety vest, gloves, backflow preventer and safety glasses are included.



800-648-5011 | www.camspray.com
BOOTH 1369

2022 WWETT SHOWCASE PRODUCT PREVIEW



WORKING WELL UNDER PRESSURE

Pressure Washers & Drain Jetting Equipment

NEW



RCJ4008H

»8 gpm @ 4000 psi
»800 cc EFI Honda Engine
»200' x 3/8" Jet Hose on Manual Reel

Call for Quote

NEW



LJ4008H

»8 gpm @ 4000 psi
»800 cc EFI Honda Engine
»200' x 3/8" Jet Hose on Manual Reel

(NARROW DESIGN)

Call for Quote

NEW



4008H Power Unit

»8 gpm @ 4000 psi
»800 cc EFI Honda Engine
»400' x 3/8" Jet Hose on DC Powered Reel

Just Add A Tank!

Call for Quote

3012H Power Unit

»12 gpm @ 3000 psi
»800 cc EFI Honda Engine
»400' x 1/2" Jet Hose on DC Powered Reel

Call for Quote

NEW



4008H Compact Skid

»8 gpm @ 4000 psi
»800 cc EFI Honda Engine
»400' x 3/8" Jet Hose on DC Powered Reel

(100 GALLON TANK)

Call for Quote

3012H Compact Skid

»12 gpm @ 3000 psi
»800 cc EFI Honda Engine
»400' x 1/2" Jet Hose on DC Powered Reel

(100 GALLON TANK)

Call for Quote



STB3012H

»12 gpm @ 3000 psi
»800 cc EFI Honda Engine
»400' x 1/2" Jet Hose on DC Reel

Call for Quote



TT4 SERIES

»18 gpm @ 4000 psi
»74 HP Turbo Intercooled HATZ Engine
»500' x 1/2" Jet Hose/ Hydraulic Reel

Call for Quote

*** All Jets Shown Come with Pulse Valve, 2 Jet Nozzles, Tool Box, Gloves, Safety Glasses, Tip Cleaner, Tiger Tail, Wash Down Trigger Gun with Nozzles. ***

Building Drain and Sewer Equipment since 1981.

We Build Electric, Gas and Diesel powered models up to 4000 psi, flows up to 40 gallons per minute. Don't see exactly what you want. . . . We will custom build exactly what you want!

**800-648-5011 | www.camspray.com
sales@camspray.com**

HAMMERHEAD TRENCHLESS BLUELIGHT LED SYSTEM

HammerHead Trenchless has released its newly redesigned BlueLight LED cured-in-place pipe lining system. The next-generation BlueLight system features user-friendly enhancements and expanded capabilities making it a suitable solution for the rehabilitation of laterals and small sewer pipes 3 to 10 inches in diameter.

The innovative BlueLight technology is among the most advanced light-curing systems available, empowering CIPP lining professionals by alleviating the time pressures of other CIPP systems and curing methods. The specially formulated single-part resin only cures under light in the blue wavelength, giving installers significantly longer working time between liner wet-out and curing. Once installed, the automated curing system pulls the LED light head through the liner, curing the resin almost instantly.

“The original BlueLight system was, and still is, a game-changer in lateral rehab,” says Josh Hood, senior product manager at HammerHead Trenchless. “But our new design incorporates feedback from installers around the world to make it even more user-friendly and efficient to maximize productivity on every lining job.”

New features include:

- Intuitive touch screen interface
- Interchangeable reels available in 131- and 164-foot lengths



- Three light head sizes including a new 3-inch light head
- Lightweight, ergonomic frame for easier maneuverability and portability

Both the original BlueLight system and the newly redesigned model are capable of navigating and repairing 45- and 90-degree bends, and some transitions. The BlueLight system resin is free of styrenes and VOCs, and the system meets or exceeds ASTM F1216.



800-331-6653 | hammerheadtrenchless.com

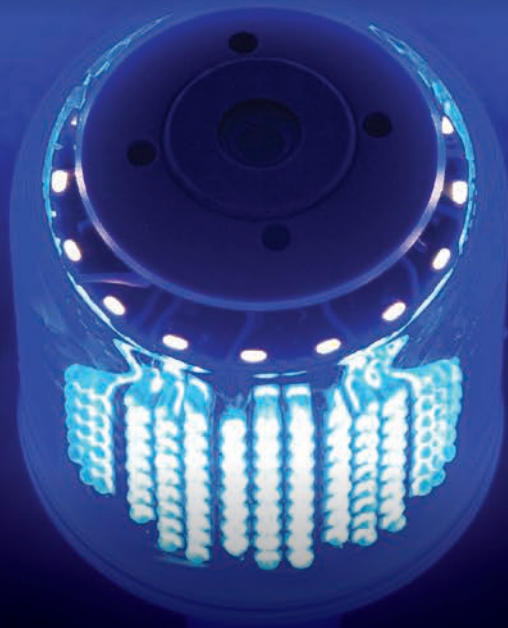
BOOTH 4139

2022 WWETT SHOWCASE PRODUCT PREVIEW

LIGHT YEARS AHEAD

BLUeLiGHT[®] BY
HAMMERHEAD[®]

THE NEXT GEN
BLUeLiGHT LED[®]
CURES UP TO
5X FASTER
THAN OTHER
CIPP CURING
METHODS.



Instead of waiting hours for a liner to cure, work at light speed with the exclusive, game-changing technology of the BlueLight LED[®] lateral lining system from HammerHead Trenchless. With its compact footprint and amazing speed, installers can instantly increase productivity and get more jobs completed faster.

The BlueLight system's enhanced features include intuitive touch screen interface, three light-head options, interchangeable reels, state-of-the art software, automated quality assurance, superior resin stability and more. Experience the next generation of lateral CIPP with BlueLight LED[®] only from HammerHead.



REHAB & REPLACEMENT. REDEFINED

Learn more: hammerheadtrenchless.com/bluelight

CPI PRODUCTS

URS1: UNIVERSAL ROLLER SKID

Video inspection cameras are a great tool to provide essential information before starting repairs. Oftentimes, push cameras get into a pipe and start pushing debris, which obstructs the camera lens, or they just cannot reach the problem. The URS1 roller skid moves the camera off the bottom of the pipe and centers it in 6-inch to 14-inch pipes. Instead of impacting the walls and pushing into debris, the camera is above debris and centered for an improved image.

The wheels on the URS1 reduce friction and enable the camera to go further down the pipe. The legs on the URS1 automatically extend and contract to keep it centered, and when the retrieval rope is pulled,



the legs retract, reducing the size of the URS1 and making it easier to retrieve. Optional LED lights are available to increase illumination and 3-inch wheels are available for larger pipes. The URS1 can be used with cameras up to 1.9 inches (48 mm) and 2.5 inches (63 mm) in diameter with the Endzo adapter.

CPI offers the DrainTrain roller skid for 3-inch (75 mm) pipes, for cameras up to 1.375 inches (35 mm) and the URS4 and Trapmaster for 4-inch (100 mm) to 6-inch (150 mm) pipes and for cameras up to 1.562 inches (39.5 mm). The ProKit 8 is available with everything a professional inspector needs. CPI Products are made in the United States and have a limited lifetime warranty.

CPI Products

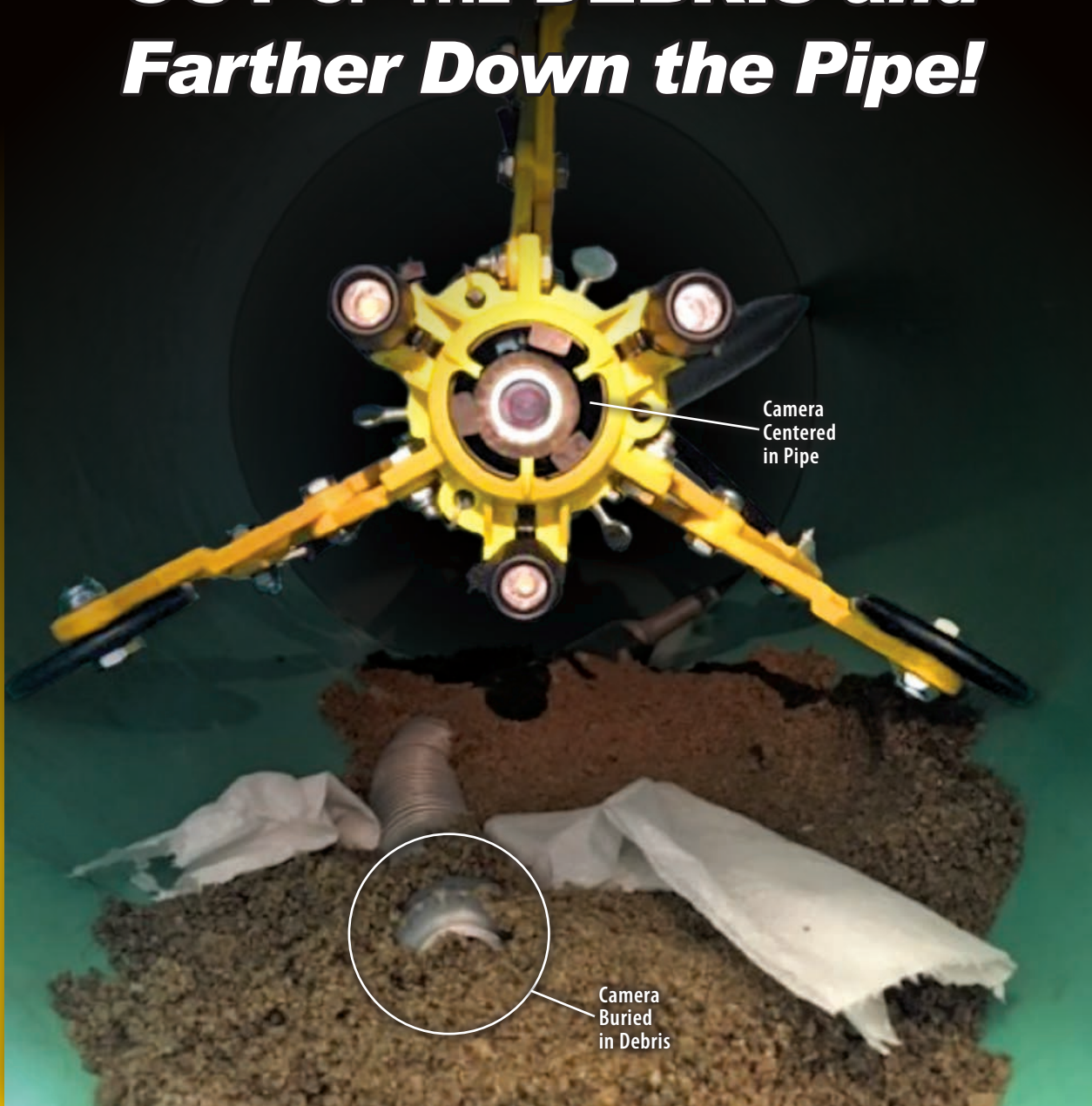


413-443-0925 | www.cplasproducts.com

BOOTH 1144

2022 WWETT SHOWCASE PRODUCT PREVIEW

GET YOUR CAMERA OUT OF THE DEBRIS *and* Farther Down the Pipe!



*The URS1 automatically
centers in 6" to 12" pipes.*

*Fits cameras up to
1.9" or 44mm diameter.*



More information and distributor list at
www.cplasproducts.com or 413-443-0925

CPI Products

Designed and made In USA by CPI Products!

SUPER PRODUCTS LLC

VACUUM TRUCKS



Super Products, an Alamo Group company, is a prominent manufacturer of vacuum trucks. For the past 50 years, Super Products has been at the cutting edge of vacuum truck development featuring advanced technology and customized solutions driven by customer needs. Innovation is at the forefront of everything Super Products does. All units are engineered for a wide variety of applications and designed with the operator in mind while being recognized for high quality, durability and ease of operation. Super Products gives contractors and municipalities access to efficient and progressive vacuum excavators, combination sewer cleaners, industrial vacuum loaders, truck-mounted jetters and liquid vacuum trucks.

Super Products was founded in West Allis, Wisconsin, in 1972 by Lionel Moore, Chuck O'Bryan and Tom Flinn, who produced the

first Supersucker Industrial Vacuum Loader, followed by the Camel Combination Sewer Cleaner in 1976. The company quickly earned a solid reputation for developing innovative and efficient equipment and gained recognition throughout municipal and industrial markets.

In 1981, Super Products was sold to Inductotherm, followed by Specialized Industries LP in 2005, before being acquired by the Alamo Group in 2014. Today, the company produces five different vacuum truck product lines and employs over 180 hardworking men and women. Super Products is currently headquartered in Mukwonago, Wisconsin, and has a broad nationwide network with representatives supporting contractors, dealers supporting municipalities and eight rental facilities supporting short- and long-term rentals, parts and service.



800-837-9711 | www.superproducts.com

BOOTH 6705

2022 WWETT SHOWCASE PRODUCT PREVIEW



CELEBRATING 50 YEARS OF VACUUM TRUCKS



JOIN THE CELEBRATION AT:



BOOTH #6705

FEBRUARY 22-24, 2022



Super Products, an Alamo Group Company, is a leading manufacturer of vacuum trucks for a wide variety of applications. 800.837.9711 | info@superproducts.com | www.superproducts.com

SCRENCO SYSTEMS LLC

TRASH MASTER 400 AUTO SCREEN



The all new Trash Master 400 Auto Screen uses gravity to separate the trash from flow stream through a 4-inch-long sweep inlet with fan spreader to power off-load vacuum trucks to the screen.

An aluminum hopper with 6-inch outlet cam and 3/8-inch gapped 1/4-inch bar screen; meets the 503 regulations. The stainless steel U-channel with replaceable plastic-lined titanium UHMW provides for years of wear, with a high-strength alloy steel 8 1/2-inch shaftless screw which moves trash to a waste container or dumpster.

The stainless steel U-channel has slotted drain holes and a double center channel bar screen for cleaner and dryer trash. A custom-built stainless steel bar rake is included for easy maintenance.

A front spray bar with 1 gpm nozzles keeps the unit clean and free of buildup. The lower cover contains two built-in 1 gpm nozzles, and simple lever clamps allow for easy removal of the covers to access the U-channel and screw for mounts and cleaning.

A 2 hp Nord gear-reduction drive with Lenze variable-frequency drive control accomplishes a variable speed screw from 5 to 28 rpms.

Adjustable legs with fork skids allow for easy movement of the unit. It includes an OSHA-compliant catwalk for maintenance and viewing. The patent pending design is a simple septic receiving station with one moving part, and an inexpensive auto trash screen.

The Trash Master 400 is built by a company in the industry with years of plant experience.



208-790-8770 | www.screencosystems.com

BOOTHS 5325 AND 5331

2022 WWETT SHOWCASE PRODUCT PREVIEW

Screenco Systems LLC

Dual Screen Design

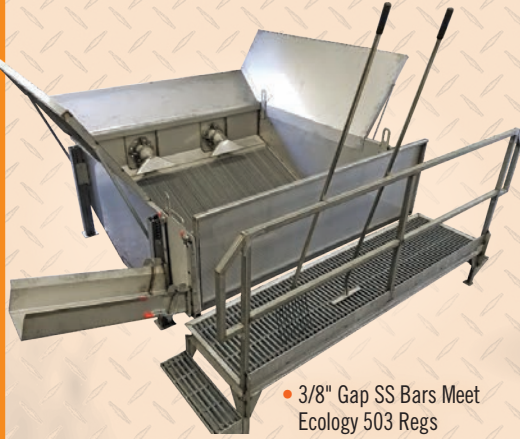
208-790-8770 | www.screenosystems.com | sales@screenosystems.com

PATENTED DUAL SCREEN DESIGN

Your leader for simple innovative technology. Products built and field tested by industry professionals. Equipment that really works!



MEGA SCREEN 600 & 800 RECEIVING STATIONS



- Largest Receiving Stations On The Market Mega 800 51 Sq Ft, Mega 600 40.5 Sq Ft
- Offload At 1000-800 GPM Through Dual Fan Spreaders 4", 6" or 8" Inlet
- 3/8" Gap SS Bars Meet Ecology 503 Regs
- Use For Industrial Truck Clean-out
- Offload 2 Trucks At Once
- 7' Trash Chute Bolts On Either Side
- Septic & Grease Receiving And Lift Station Trash

NEW TRASH MASTER 400 RECEIVING STATION



- Simplest Auto Screen In The Industry**
- Uses Gravity To Separate Trash From Flow Screen
 - 4" Power Offload From Truck 500 GPM
 - Patent Pending
 - 3/8" Gap SS Bars Meet Ecology 503 Regs
 - Dewateres Trash - VFD 5-30 RPM
 - Heavy Duty Shaftless Screw Moves Trash To Receptacle

MAXI SCREEN 400 PORTABLE SEPTIC RECEIVING STATIONS



- Aluminum & Stainless Construction**
- 3/8" Gap SS Bars Meet Ecology 503 Regs
 - Screens That Really Work
 - No Moving Parts
 - Gravity Off-Load At 500 GPM
 - NEW 4' Trash Extension Puts Trash Directly Into Dumpster
- Patented Dual Screen Design

NEW MICRO SCREEN 400 PORTABLE RECEIVING STATION



- Place Over Frac Tank Or In Ground Storage Tank
- Bolts Securely To Manhole Ring
- 3/8" Gap Bars, 8 Sq Ft Screen Area
- Sealed Lockable Hinged Cover
- Lightweight - Portable
- Small Footprint
- Fast 4" Offload

OUR SYSTEMS MEET ECOLOGY 503S



MINI SCREEN 400 PORTABLE RECEIVING STATION

- 500 GPM
Patented Dual Screen Design
- Same Great Design, Ships Truck Freight
 - Easily Fits In Pickup for Transport
 - Small Footprint, Big Results



TRIPOD LID & PUMP LIFTER

- Saves Back Injuries
- Auto Brake Winch
- Only Weighs 28 lbs
- Heavy-duty Aluminum Construction
- Available In 4-5-6 Ft Models
- Lifts Stubborn Tapered Lids
- Folds To Fit On Hose Deck
- Max Load 600 lbs

GRIT ELIMINATOR



- Removes Grit From Flow Stream
- Keeps Onsite Storage Grit Free
- Available in 18, 32, 64, 96 Cu Ft Grit Capacity

SHAFT DRIVE PUMPS & AGITATORS



- Move Septic And Grease Interceptor Waste With Ease From Underground Storage Tanks
 - Great For Transferring To Land Application Site
 - Mix While Dewatering
 - Handles Sand Grit And Slurry Type Materials
 - Pit Depths Of 3-12 Ft, 3333 Up To 500 GPM, 4444 Up To 1580 GPM
- Patz DISTRIBUTOR**

TRUCK TOW BEHIND PORTASCREEN SPREADER



- Portable Event Screening
- Doubles As Screener Spreader & Mobile Septic Receiving Station
- Clean Up Your Land Application Site
- Never Hand Pick Trash Again

CAM SPRAY

3012H COMPACT SKID MOUNT JETTER



The 3012H Compact Skid Mount Jetter is designed to go into a high cube van or pickup bed and take up as little space as possible while still flowing 12 gpm at 3,000 psi. Features include a Honda iGX 800 fuel-injected gasoline engine with oil alert and hour meter, powering a gearbox-driven plunger pump with ceramic plungers, stainless steel valves, pressure gauge and 80-mesh water filter.

The pump is protected by an unloader valve and secondary pop-off. A power pulse feature is used for navigating longer runs and elbows. The 100-gallon tank includes low water shutoff and a float valve to manage filling the tank. An industrial coated skid

platform and frame offers transferability between vans, trucks and trailers, while mounting flanges and D-rings allow for the machine to be fastened or tied down. The frame provides protection and rigidity, and is manufactured with industrial coated tube and plate steel. The DC-powered reel has a 400-foot by 1/2-inch hose and includes a milling and bullet nozzle.

A storage box and tip cleaner, toolbox, gloves, backflow preventer and safety glasses, 50-foot washdown hose and trigger gun for washing are included. The machine measures 52 inches long by 41.5 inches wide by 50 inches tall.



800-648-5011 | www.camspray.com
BOOTH 1369

2022 WWETT SHOWCASE PRODUCT PREVIEW



WORKING WELL UNDER PRESSURE

Building Drain and Sewer Equipment since 1981.

NEW



4008H Power Unit

»8 gpm @ 4000 psi
»800 cc EFI Honda Engine

»400' x 3/8" Jet Hose on DC Powered Reel

Just Add A Tank! Call for Quote

3012H Power Unit

»12 gpm @ 3000 psi
»800 cc EFI Honda Engine

»400' x 1/2" Jet Hose on DC Powered Reel

Call for Quote

NEW



4008H Compact Skid

»8 gpm @ 4000 psi
»800 cc EFI Honda Engine

»400' x 3/8" Jet Hose on DC Powered Reel

(100 GALLON TANK) **Call for Quote**

3012H Compact Skid

»12 gpm @ 3000 psi
»800 cc EFI Honda Engine

»400' x 1/2" Jet Hose on DC Powered Reel

(100 GALLON TANK) **Call for Quote**

NEW



RCJ4008H

»8 gpm @ 4000 psi
»800 cc EFI Honda Engine

»200' x 3/8" Jet Hose on Manual Reel

Call for Quote

NEW



LJ4008H

»8 gpm @ 4000 psi
»800 cc EFI Honda Engine

»200' x 3/8" Jet Hose on Manual Reel

(NARROW DESIGN) **Call for Quote**



VM4007H

»7 gpm @ 4000 psi
»690 cc Honda Engine

»400' x 3/8" Jet Hose on DC Reel

Call for Quote



CV4007H-HOT

»7 gpm @ 4000 psi
»690 cc Honda Engine

»400' x 3/8" Jet Hose on DC Reel

Call for Quote

TRAILER MODELS AVAILABLE

through 25 gpm @ 4000 psi

*** All Jets Shown Come with Pulse Valve, 2 Jet Nozzles, Tool Box, Gloves, Safety Glasses, ***
Tip Cleaner, Tiger Tail, Wash Down Trigger Gun with Nozzles.

Pressure Washers & Drain Jetting Equipment

We Build Electric, Gas and Diesel powered models up to 4000 psi, flows up to 40 gallons per minute.
Don't see exactly what you want . . . We will custom build exactly what you want!

800-648-5011 | www.camspray.com
sales@camspray.com

DYNABLAST

WATER HEATER AND PUMP COMBINATION

The Dynablast HV420FLS-12VRED hydrovac water heater produces 420,000 Btus, and is 12 volts with an output temperature of 175 degrees F at 5 gpm, making it ideal for colder climates. It also improves digging in clay-filled areas. It features a compact design with a 19-by-19-inch footprint to fit on most trucks as an aftermarket replacement for older trucks. This unit, like all other Dynablast models, comes with ETL certification for safety, which also includes certification on the coil for higher efficiency and heat transfer. It has a stainless steel target plate for increased coil life and is designed with serviceability in mind, as it has momentary override control for troubleshooting in the field.

The Interpump T2040SPF-P34CC water pump package is 10.5 gpm at 2900 psi at 1,750 rpm. It features a compact lightweight design with a T13 female spline shaft input and SAE B 2/4 bolt flange, directly mounted to a bi-directional Interpump FOX 34CC hydraulic motor with built-in loop flush valve, ideal for compact installations.

Dynablast provides factory pump and motor assemblies with PA unloaders and preset PA safety valves designed to customer specifications to make it easier to install.

With over 30 years as a manufacturer of hot water equipment — in addition to being the National Canadian distributor for Interpump, Pratisoli pumps and PA products for the past 40 years — Dynablast can provide a customized solution to meet your needs.



905-867-4642 | jthomson@dynablast.ca
www.dynablast.ca/product-category/hydrovac/

BOOTH 6633

2022 WWETT SHOWCASE PRODUCT PREVIEW



Dynablast

A DIVISION OF JOHN BROOKS COMPANY LIMITED

	<p>BOOTH #6633</p>
---	-------------------------------

HYDROVAC

HOT WATER HEATERS

- 200,000 to 900,000 BTU
- 12v to 120v
- Schedule 80 Coil
- High Pressure Schedule 160 Coil
- Steam & Non-Steam

WATER PUMPS

- Female Spline
- Bell Housing
- 5 to 24 GPM
- Up to 5800 PSI
- PA Accessories

UNLOADER & SAFETY VALVES, WASHGUNS & NOZZLES



EXCLUSIVE CANADIAN DISTRIBUTOR FOR OVER 30 YEARS

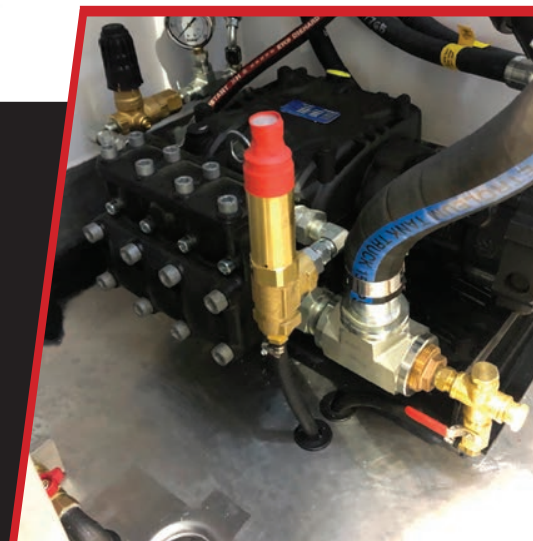


Pratissoli



1-905-867-4642

WWW.DYNABLAST.CA



HERMANN SEWERIN GMBH

SECORRPHON AC 200



Hermann Sewerin GmbH has developed the SeCorrPhon AC 200 for professional water leak detection. It combines the characteristics of a correlator with acoustic water leak detection, offering prelocation, pinpointing and correlation in one single system. It features an easy-to-read measurement value display and automated filter selection.

The SeCorrPhon AC 200 is based on the tried and tested housing and hardware concept of the AQUAPHON A 200 by Sewerin. Each

is suitable for use for leak detection across all sections, materials, diameters and lengths of pipelines. Numerous additional functions are also available for complex location scenarios. Whatever your leak detection requirements, this product will fulfil all of them, according to a company spokesperson.



Office: 888-592-9916 | Cell: 888-592-9916, ext. 102
sewerin-usa@sewerin.net | www.sewerin.com

BOOTH 1873

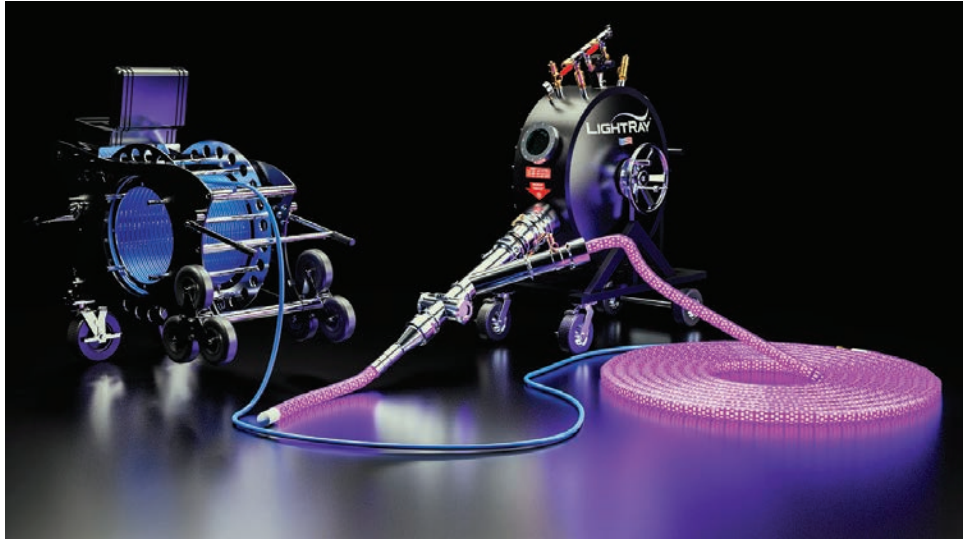
While others are still searching ...
... WE ARE FINDING LEAKS!



***SeCorrPhon AC 200 &
VARIOTEC® 460 Tracergas***
EVERYTHING you need on non-metallic pipes!

LIGHTRAY

LIGHTRAY LRI SYSTEM



The new LightRay LRI System is an advanced entrant to the UV-cast inversion liner market. Its simple design allows complete operator control over the process and closely resembles traditional ambient cure inversion methods.

The proprietary light train can accomplish throughput up to 6.3 feet per minute of casting, which incorporates cold LED lights that require no heat to cast the liner. The light train comes in a standard casting length of 50 feet, operates on a low-voltage DC platform and is internally protected to accommodate bends in pipes up to 90 degrees.

No more carrying hazardous materials in your truck or trailer, and there's no need to measure and mix on-site. The LightRay liners arrive ready to install without any need for refrigeration, which dramatically reduces the variability from mixing and preparing liners,

and eliminates the requirement for extra equipment in the field, allowing for rapid system deployment.

The LightRay LRI System uses non-thermal UV casting resin that is temperature-stable and only activated by UV light coupled with high-strength flexible fiberglass coated liners. No matter the temperature in the working environment, the casting times are consistent every time, according to the manufacturer.

LightRay manufactures state-of-the-art UV technology for the CIPP industry. This cutting-edge solution offers new opportunities for plumbers and contractors by significantly reducing the time and resources needed on the job site. Lowering both risk and cost with fast and high-quality results, LightRay is helping to usher the trenchless industry into the 21st century.



866-336-2568 | www.waterlinerenewal.com/lightray

BOOTH 5431



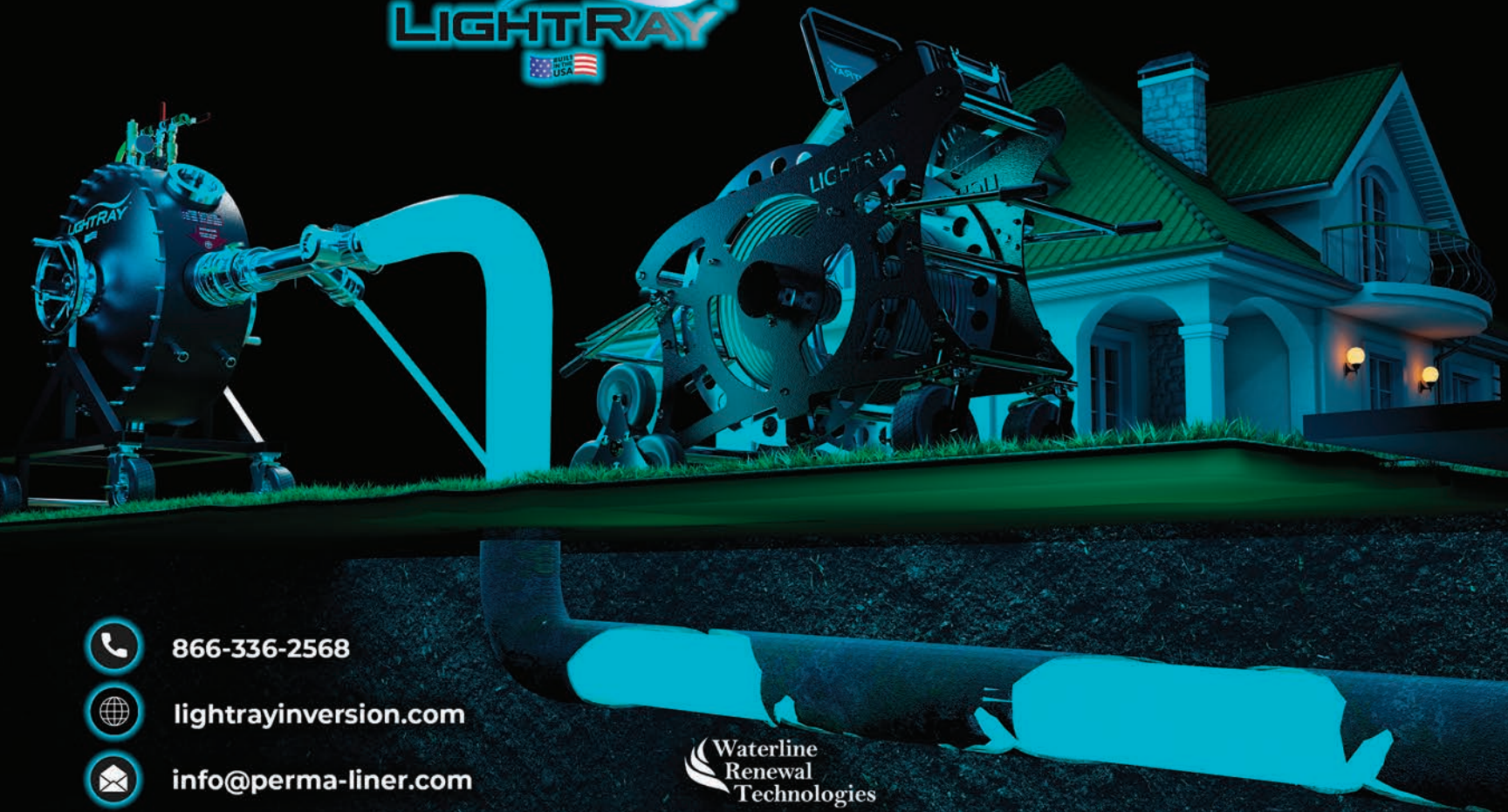
DESIGNED, BUILT & SUPPORTED
IN THE USA



THE NEXT EVOLUTION IS HERE

LIGHTRAY LRI UV INVERSION

CASTING AT THE SPEED OF LIGHT



866-336-2568



lightrayinversion.com



info@perma-liner.com

Waterline
Renewal
Technologies

VISIT US AT THE 2022 WWETT SHOW, BOOTH 5431

VAC-CON TITAN SERIES



While the past two years brought one challenge after another to the manufacturing industry, the employee owners at Vac-Con turned these challenges into an opportunity for innovation. As you will discover at this year's WWETT Show in Indianapolis, the results of their hard work can be seen in a host of new products in Booth 2619.

For close to 40 years, Vac-Con has been a leading manufacturer of sewer cleaners, jetters and vacuum excavation machinery for public and private sectors. 2020 provided an opportunity to invest in research and design, and Vac-Con is excited to unveil its largest WWETT display ever, with over 8,000 square feet of exhibit space featuring some of the most innovative new products on the market.

The impressive second generation of the company's popular Titan Series of combination machines has been refined to improve airflow, noise reduction and operational efficiencies. Significant investment into enhancing the Aeroboost three-stage fan has made it among the

most precise vacuum systems on the market.

A complete portfolio of VJ jetter machines, including the all-new VJT1500 enclosed jetter, boasts a "something for everyone" offering, making the VJ product line an ideal choice for municipal and contractor fleets alike.

During the opening hours of this year's WWETT Show, Vac-Con will also introduce an all-new, patent-pending component that aims to revolutionize the way that operators do their jobs. Be sure to be at Booth 2619 Tuesday morning to see the launch of this game-changing new product.

Stay tuned for announcements regarding new Vac-Con product reveals as 2022 WWETT Show dates get close. "While you're at the WWETT Show in Indianapolis, spend some time in Booth 2619 with the Vac-Con team to see the latest innovations in truck and trailer-mounted sewer cleaning, jetting and hydrovac machines," says a company spokesperson. "You won't be disappointed."



904-284-4200 | www.vac-con.com

BOOTH 2619

2022 WWETT SHOWCASE PRODUCT PREVIEW



When the world shut down we saw an opportunity. An opportunity to grow, to build, to invent, to inspire, and to persevere. Was it easy? No. Hard work is hard. We're ready to show you our hard work.

At Vac•Con we've been an industry leader for almost 40 years. Now is the time for us to retake the lead.

Stop by our booth. We're pretty sure you're going to see something that will make you want to put another Vac•Con in your fleet.

VAC-CON

**BOOTH
2619**

TRUVAC

TRUVAC FLXX

Met the TRUVAC FLXX, a flexible vacuum truck providing maximum payload, performance and productivity in a smaller and more maneuverable package. TRUVAC FLXX is a safe digging machine that is perfect for a wide range of applications that simply are not as suitable, or as profitable, for a full-sized truck.

The quality of TRUVAC's equipment is backed by its service and support after the sale. The company's experts are committed to helping you get the most from your vac truck so you can focus on getting the job done right. Parts and service centers are at the ready to keep you up and running. Expert consultation and training is available for optimal equipment use, safety and maintenance. TRUVAC offers cloud-based access 24/7 to technical information, parts bulletins and warranty information.

Built to deliver precision and performance, TRUVAC excavators come in a variety of sizes, with a wide range of customizable parts and features. Visit www.truvac.com to learn how the company's equipment can drive profitability in jobs requiring non-destructive digging and meet the most demanding safety requirements.



TRUVAC[®]
by Vactor Mfg., Inc.

800-627-3171 | www.truvac.com

BOOTH 5445

2022 WWETT SHOWCASE PRODUCT PREVIEW

Meet the



wwett 22 BOOTH 5445

LARGER LOAD. SMALLER TRUCK. MORE PROFITABLE JOBS.

TRUVAC FLXX™ is the flexible vac truck for hydro and air excavation built to dig simple, dig safe, and dig smart. Manufactured by Vactor® Mfg., LLC, with a variety of training, service and support options available.

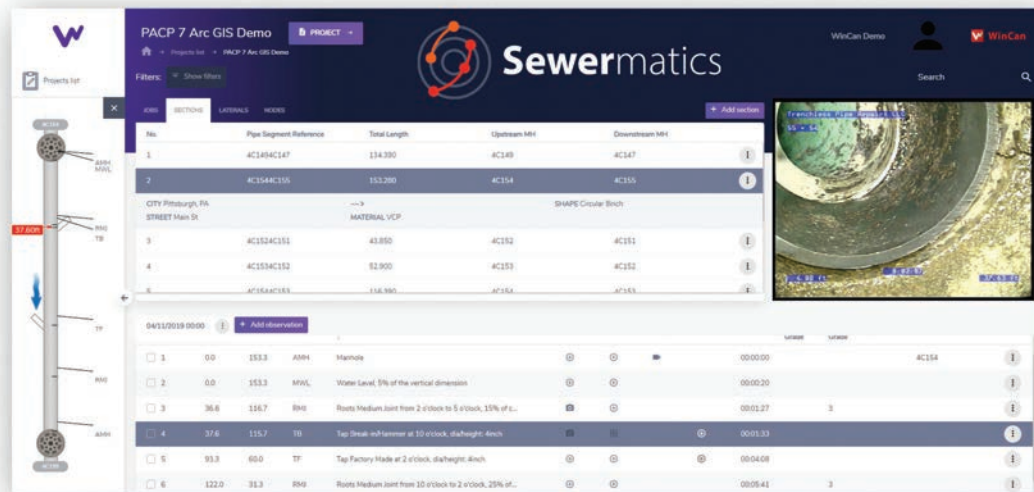
**LEARN
MORE
TODAY**



TRUVAC.COM    

©2021 Vactor Mfg., LLC, All Rights Reserved.

WINCAN SEWERMATICS AI



WinCan's Sewermatics is an AI that solves your team's biggest sewer data challenges. From collection to analysis, Sewermatics can expedite workflows, alleviate data chokepoints and provide insights that help wastewater operators save money and lower risk.

With powerful AI support at every level, inspection teams can get more value out of their data with less hassle along the way. After data is collected, Sewermatics AI can get to work automatically coding inspection footage, with the WinCan QC team ready to review final deliverables. If your data is stuck in another database, Sewermatics can help you free that data, convert it to your chosen standard and

bring it into WinCan, where it can be augmented and added to your asset management database.

Once data is transferred and coded, Sewermatics can sync your data with industry-leading asset management and GIS solutions to help you better visualize your data with heatmaps and a variety of analysis tools. Inspection data can also be stored in the cloud via WinCan Web, making it easy to collaborate remotely with clients, coders and field teams, and store inspection data securely online. Schedule a demo online at www.wincan.com or get in touch with the company's sales team using the contact information below.



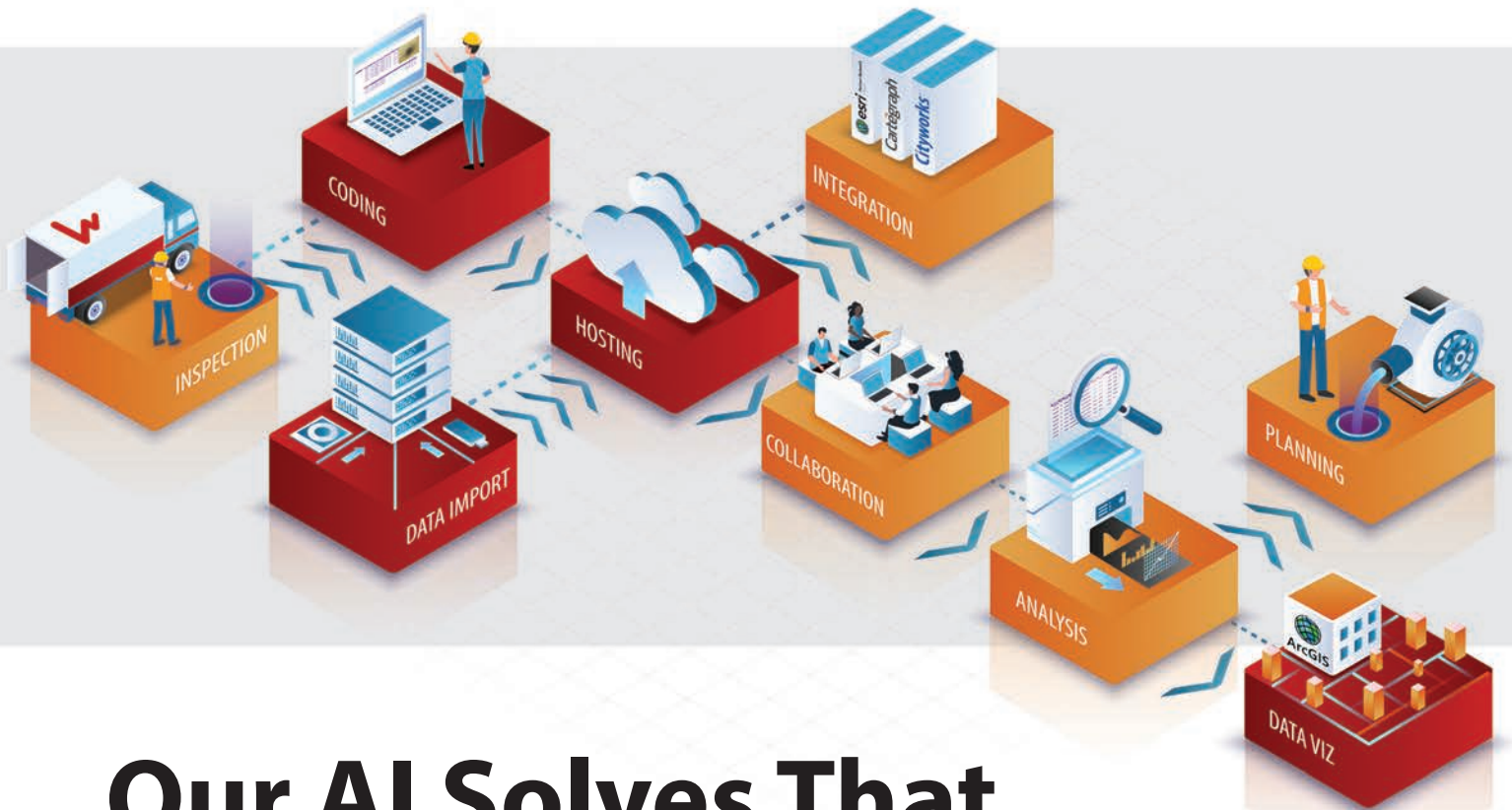
WinCan

877-626-8386 | www.wincan.com

BOOTH 6005

2022 WWETT SHOWCASE PRODUCT PREVIEW

Sewer Insight Can Be Complicated.



Our AI Solves That.

Sewermatics applies powerful AI to the biggest challenges in sewer inspection and rehab. It works seamlessly with the WinCan ecosystem you know and trust—delivering AI-powered results and actionable insights that integrate with your team and processes.

Sewer upkeep is full of challenges. Our AI solves more of them.



Automatic Coding. Upload pipe and manhole footage, get back coded inspections. It's that simple. And WinCan has the world's largest user base, so our AI can grow faster.



Team Collaboration. Different jobs, different departments, one goal. Using AI, Sewermatics optimizes team scheduling and workflow hand-offs so you get more done.



Data Translation. Data siloed across different applications, formats and standards? Let our AI fix that. With merged data, you'll get broader insights.



Map-based Visualization. More data, more headaches? Not with AI from Sewermatics. View real-time heatmaps, spot hidden trends, and drill down to root causes.



Rehab Planning. Save days of effort and guesswork. Our AI builds smart, system-wide rehab plans that factor in defect type, proximity, severity, criticality and repair cost.



Sewermatics

wincan.com/sewermatics

VACUUM TRUCK RENTALS AND VAC TRUCK DEPOT

NEW AND PRE-OWNED EQUIPMENT



Vacuum Truck Rentals began business in 1999 as Vacuum Truck Services before transitioning into the rental business. The company began with a single piece of equipment and one location. Today, it has grown to operate 17 locations with more than 800 pieces of equipment and offers a 24/7 service guarantee.

Vacuum Truck Rentals offers rental solutions, new and pre-owned sales, service, parts and refurbs as part of its business operations. Its professional sales and leadership team has more than 500 combined years of industry experience. “The company’s motto is ‘rent from the best,’ and we stand behind that message in everything we do,” says a Vacuum Truck Rentals spokesperson.

As the company grew, it realized the need and demand for other services that paralleled its core business. From financing, new equipment and parts sales, expanded focus on additional industries and more, the Vacuum Truck Rentals family of companies is positioned to offer multiple solutions to its customers.

Vac Truck Depot offers pre-owned equipment for sale backed by a 90-day warranty and 30-day money back guarantee. Visit www.vactruckdepot.com to view the equipment for sale. You can learn more about this family of companies on Facebook, LinkedIn and Instagram and by using the contact information below.



888-955-2087 | www.vactruckrental.com

BOOTH 3012

AFTER MORE THAN 20 YEARS, WE'RE STILL THE BEST IN THE BUSINESS.



- 17 LOCATIONS • 24/7 NATIONWIDE
- Rentals • Service • New and Pre-Owned Sales • Parts • Refurbs



**VACUUM
TRUCK
RENTALS**
vactruckrental.com
888-955-2087



**VAC TRUCK
DEPOT**
vactruckdepot.com
888-970-1875

**STOP BY AND SEE
US AT THE 2022
WWETT SHOW AT
BOOTH 3012.**

VACTOR

2100i COMBINATION SEWER CLEANER



As a pioneer and an innovator, Vactor has found ways to help communities save money, improve the quality of life for people, and improve the productivity and safety of the individuals who operate its equipment.

The Vactor 2100i redefines simplicity with Vactor's IntuiTouch one-touch control system by bringing advanced, yet intuitively simple controls designed to maximize operator efficiency. Inside the cab, Vactor has included a 7-inch screen with backlit tactile buttons and one-touch control for quick startup and engagement. Outside the cab, operators will find a single control panel including a 7-inch dashboard screen with touch-screen and glove-friendly buttons featuring at-a-glance data for maximum efficiency. Features include:

- Jet Rodder water pump provides smooth continuous flows and optional "jackhammer" action
- An optional RDB 1015 Rapid Deployment Boom
- Patent-pending HALO — or hands-free accessory light option

- Multi-Flow system offers operation at lower rpm for better fuel economy
- Modul-Flex design provides for optimum weight distribution on every truck

Vactor officials say the company remains driven to bringing you the most safe, capable, versatile, quiet and efficient equipment possible. "Durable, reliable equipment that delivers the quality and value you deserve and should demand," says a company spokesperson. "Equipment you can count on today, tomorrow, and years into the future."

Vactor is an industry leader in sewer cleaners, catch basin cleaners and jetting equipment featuring innovative technology and custom-configurable designs. "Quite simply, we seek to be the No. 1 provider of infrastructure maintenance equipment and safety tools in the world."

VACTOR[®]

Subsidiary of Federal Signal Corporation

815-672-3171 | www.vactor.com

BOOTH 5445

2022 WWETT SHOWCASE PRODUCT PREVIEW

WE MADE THE BEST EVEN BETTER.

STOP BY BOOTH #5445 TO SEE HOW

Visit us at booth
wwett 22 5445



The 2100i employs advanced technology that not only enhances the performance of the equipment but the individuals who operate it. Less fatigue. More comfort. Push button operation. Greater precision. Superior power and performance. Controls that truly put the operator in control. All of this in a system designed to be the ultimate in ruggedness, reliability, simplicity and value.

Vactor has proudly been dedicated to continuously improving combination sewer cleaners for over fifty years. Our team is looking forward to showing you the latest innovations. More than a manufacturer, Vactor offers you customized solutions featuring unmatched quality and backed by powerful support. Vactor is the brand you can trust.

© 2022 Vactor Manufacturing, LLC

Features:

- *The revolutionary IntuiTouch® control system*
- *Low-maintenance Jet Rodder® water pump*
- *Exclusive Modul-Flex design*



**TO SEE OUR FULL LINE
OR REQUEST A DEMO**

VACTOR 2100i



GUZZLER CLASSIC VACUUM TRUCK



Met the Guzzler Classic vacuum truck. Guzzler has enhanced its Classic to offer you even more — more performance, more versatility and more accessibility. All so you can do more in less time at less cost. The Guzzler Classic modular design allows you to select off-loading solutions to meet specific needs so you get minimal downtime and maximum productivity.

The Classic keeps evolving and continues to set the standard for power, reliability, and operating and maintenance ease. But, setting the standard isn't enough — Guzzler continues to raise it. The Classic

is a workhorse in a wide variety of industrial applications, with a long history and solid reputation in the field as a powerful and efficient industrial vacuum loader that recovers, contains and carries solids, dry bulk powders, liquids, slurries and thick sludge from hard-to-reach areas. The Classic tackles the most demanding wet-dry industrial cleaning applications.

Visit www.guzzler.com and get to know the company that has been setting the standard for performance, productivity, durability, reliability and ruggedness in industrial vacuuming equipment for more than 40 years.



815-672-3171 | www.guzzler.com

BOOTH 5445

2022 WWETT SHOWCASE PRODUCT PREVIEW

Guzzler Does More



Guzzler is the first name and world leader in industrial vacuum equipment. We offer the widest range of offloading options available with trucks designed to vacuum everything from solids and dry bulk powders, to liquids, slurries and thick sludge.

You will find Guzzler equipment hard at work in the world's most punishing applications— cement plants, steel mills, railroads, oil refineries, chemical plants, foundries, power stations, and more.

GUZZLER[®]
Subsidiary of Federal Signal Corporation

GUZZLER.COM



 **vw22** BOOTH 5445

**LEARN
MORE
TODAY**



©2021 Guzzler Manufacturing

HOWDEN

ROOTS EASYAIR MVP



As a world leader in blower technology for mobile vacuum applications, Howden's truck-mounted blowers are quiet, powerful and are established as a suitable choice for vacuum truck OEMs. Built with time- and cost-saving features, the EasyAir MVP can simplify your installation, save time and lower costs.

The EasyAir Mobile Vacuum Package is capable of providing both vacuum for product loading and pressure for product off-loading through an integrated four-way valve and can be used with a customer-supplied hydraulic motor or through shaft for power take-off connection

The blower package incorporates an inclusive design from one supplier, integrating the blower, silencers, valves, frame and enclosure into one powerful compact package. The rugged enclosure design integrates features for monitoring blower vitals while

providing noise mitigation as well as protecting these critical components from the environment.

Key components include a four-way valve, easy-to-read gauges, external oil level gauge (ensuring quick determination of oil critical for blower operation), external oil filling and draining, integrated attachment

for customer-supplied hydraulic motor or PTO and a sturdy aluminum enclosure.

Roots blowers are designed for a quick integration into a truck or trailer with models capable of pressure up to 6,515 cfm and vacuum up to 28 inches Hg.

Howden has a wide and complete range of blowers for the toughest challenges. Learn more about its portfolio of truck- and trailer-mounted blowers, including the TRI-NADO, DVJ WHISPAIR and EasyAir at the web address below.



www.howden.cloud/wwett

BOOTH 3001

2022 WWETT SHOWCASE PRODUCT PREVIEW

Roots™ Vacuum Blowers

World leader in blower technology for mobile vacuum applications



Introducing the EasyAir™ Mobile Vacuum Package (MVP), capable of providing both vacuum for product loading and pressure for product offloading through an integrated 4-way valve.



Trinado



RAM



MVP



RCS/RCS-J/RAS-J



RAM-J

- Compact size and noise reduction technology for mobile applications
- Widest and most complete range of blowers for the toughest challenges
- With models capable of pressure up to 6,515 CFM and vacuum up to 28" Hg
- Made in the USA

For more information contact:

t: 1-800-55-ROOTS (76687)
e: inquiries.USA@howden.com
w: <https://howden.cloud/wwett>

Revolving Around You™

NUFLOW

NUCURE COLD CURE UV

In developing the NuCure CCUV system, the research and development engineering team at NuFlow calculated specific requirements to cure three-layer fiberglass material, measuring the optical power density as a function of different voltages applied to LED strips. Differential scanning calorimetry determined the percentage of liner cured as a function of irradiance, resulting in the precise micro-watts per centimeter squared calculation, and its power requirements, to ensure complete irradiance and full curing of the length of the liner, from end to end.

The results were designed into the NuCure CCUV lining system, featuring dual-power supplies and the company's proprietary Double Helix light train. NuFlow engineering, combined with its Precision Push/Pull-in-Place system and quality customer support, makes for a winning combination.

Features include:

- Double-helix enhanced double light rope for curing efficiency, while dual-power supplies ensure light will fully penetrate the entire liner.
- Proprietary resin protection system protects the resin from sunlight or UV exposure; work without fear of premature curing.
- Shelf stable for a minimum of 10 months, allowing you to wet-out months in advance. Just recalibrate and you're good to go.
- Cure in as little as 10 minutes.
- Zero VOC, avoiding nuisance odors and resident concerns at the job site.
- Robust, custom-designed umbilical adapter end provides secure connection and reduces the chance of damage.
- Designed for 3- to 6-inch pipe.



nu·flow
WE FIX PIPES

www.nuflow.com

BOOTH 2601

2022 WWETT SHOWCASE PRODUCT PREVIEW

“NUFLOW’S PRODUCTS ARE THE MOST VERSATILE. I HIGHLY RECOMMEND THEM!”

PROfile

NuFlow Certified Contractor

Bob Oates added pipe lining to his business over 12 years ago. He chose NuFlow because he liked the training program they provided to ensure a proper install. Today, Bob’s son-in-law, John, runs the business and still relies on the training and support that NuFlow offers.

“We do training and online learning. My team and I reach out to them all the time. If we have a question, they will get it answered.”

As the first NuFlow installer in the Seattle area, they were keen to take advantage of the no-dig technology.

“Not having to dig, really changed the game for us. We have a pipe bursting machine, that has not left the shop in 6 months. Lining is so much easier.”

Now they operate two full-time lining crews and continue to grow their business with NuFlow.

“NuFlow’s products are the most versatile. I highly recommend them!”



John Peterson,
General Manager of Bob Oates
Plumbing in Seattle, WA

nuflow
WE FIX PIPES

Grow with NuFlow. We Got You.
www.nuflow.com | 866-430-2134



**JOIN THE
TEAM**

VISIT US AT



**Live Demos and New Product
Announcements!**

NUFLOW

NUCURE 2" COLD CURE UV

nu·cure
2" COLD CURE UV



The speed and efficiency of UV light curing to pipes as small as a 2-inch diameter.

The NuCure 2" CCUV combines NuFlow's proprietary cold cure resin formula with UV cold light LEDs and their signature Precision Push/Pull-in-Place installation technique to create a UV system for the smallest pipes.

Consisting of a lightweight control box and 4.5-foot and 20-foot light train cores, the simplicity of the product is deceiving compared to the quality and efficiency it provides the installer.

NuFlow's cold cure resin formula cures densely within 10 minutes, speeding installation times and limiting the duration of thermal energy release. The shelf stable epoxy allows for wet-out on- or offsite.

Glass reinforced plastic liner tubes are engineered for performance. Seamless ECR fiberglass tubes provide a thin-wall, high-strength structure to avoid flow loss.

NuFlow's proprietary Resin Protection System protects the resin from sunlight or UV exposure, so the

installer can work without fear of premature curing. It consists of an integral polyurethane outer coating and a removable inner calibration bladder that assists with containing and evenly distributing the resin. It protects the resin from excessive bleed-out, blow-out, wash-out and emulsification, and guards against resin slugs.

The NuCure 2" CCUV system is easy to use, minimizes the risk of error by activating liners in place and significantly reduces curing times.

nu·flow
WE FIX PIPES

www.nuflow.com

BOOTH 2601

2022 WWETT SHOWCASE PRODUCT PREVIEW

NUFLOW

NU TUBE INVERSION

nu·tube
INVERSION



NuFlow has partnered with German-based KrasoTech GmbH to introduce the NuTube Inversion lining system. For over 20 years, KrasoTech has provided innovations for pipe renovation equipment to its partners across the globe. Equipment is constructed with the operator in mind, creating user-friendly materials that provide full control of the lining process and enhanced safety features.

- NuTube Drum Inversion Hybrid: Converts from a drum to a continuous sluice system in a few easy steps. For 9-inch diameter and below.
- NuTube Drum Inversion Light: A simple, but smart inversion drum. The lightweight aluminum body is suitable for job sites with restricted space. For 8-inch diameter and below.
- NuTube Sluice Inversion: The patented two-chamber system offers endless inversion without pressure loss to protect the liner from unwanted stretching or folds. Large nodes, fittings or heating hoses are no problem for this sluice. For 12-inch diameter and below.
- Electro-pneumatic Calibration Unit: This compact impregnation unit includes an electric roller drive and electro-pneumatic roller closing to ensure the highest safety. The product is developed for on-site installation setups inside vehicles, trailers or work halls.

NuTube Inversion equipment is engineered to high standards with fine German craftsmanship and is third-party tested to three times its working pressure.

NuFlow provides its network of certified contractors with high-quality materials, technology and know-how to repair the worst pipe system failures imaginable, according to a company spokesperson. All NuFlow equipment comes with comprehensive training and 24/7 job support.

nu·flow
WE FIX PIPES

www.nuflow.com

BOOTH 2601

GAPVAX INC.

VHX SERIES HYDROVAC



GapVax is introducing its VHX hydrovac, which delivers optimum weight distribution, improved safety features and increased performance.

The debris body is 7.5 cubic yards, offering a 15,000-pound payload. The low profile (12 feet, 2 inches) overall height makes it a suitable solution for all-around hydroexcavation projects. The superior vacuum system with single mode wet-dry filtration is quiet, reliable and simple. The VHX includes a 4,000 cfm positive displacement blower, 600 hp transfer case with air-shift engagement and specially designed ultra-quiet air injection and discharge silencers. This filtration design includes a top-loading debris tank; 14-inch stainless steel floatball shutoff, ultra-efficient centrifugal cyclone separators and long-lasting filter bags.

The VHX is equipped with a powerful combination of a 12 gpm, 3,000 psi water system with optional 200 cfm air compressor system. The GapVax standard full-tilting debris body, over 45-degree dump angle, and full-opening tailgate allow for fast unloading and easy clean-out. The 8-inch telescoping VHX boom is ideal for hydroexcavation and offers a 22-foot reach with 15-degree downward pivot.

Options include stainless steel debris body; full-sized vertical heated cabinet and onboard scales; water heater options of 400,000 Btu and 575,000 Btu; glycol injection; as well as various storage and lighting packages.



888-442-7829 | inquiry@gapvax.com | www.gapvax.com

BOOTH 2200

RITAM

SUMMIT ARRAY SOFTWARE

With single-click, worldwide route optimization and Google Maps views, Summit from Ritam Technologies sets a new standard for ease of use and instant, powerful results. No matter how many routes you have to manage, it is now a matter of minutes to prepare and optimize them.

And now you have four options to share with your mobile technicians:

- Summit Mobility Lite provides optimized routes, voice navigation to each stop, the ability to mark completed or not, along with instant notifications to customers and job supervisors.
- Summit Mobility Plus (also known as Summit Proof) provides inventory management with barcode scanning and positive proof of service to your customers.
- Summit Mobility Pro offers more robust dispatching for those who want dynamic status updates from the field as they occur.
- Summit Mobility Deluxe combines Lite with Plus, thereby providing route information plus the inventory management and proof of service.
- Summit Mobility Premium combines Plus with Pro, providing robust dispatching with inventory management and proof of service.



These options are available for Summit Route Management and Summit Rental System for those in the portable restroom and related industries. Summit Mobility also is available for your service business.

Whether you need to add optimized routes to your mix of software or you need a complete billing and operations management system, the Summit Array product line can exceed your needs now and into the future, according to a company spokesperson.



925-478-2730 | info@ritam.com | www.ritam.com

BOOTH 4800

PICOTE SOLUTIONS

HYBRID MIDI ROLLER

The new Hybrid Midi Roller is for wetting out CIPP liners from 2 to 8 inches. This lightweight and compact unit can be powered by the integrated battery or plugged in and charged during use. It can be mounted on a separate work surface or combined with the Midi Roller Wet-Out Station (sold separately) which doesn't require an additional power source, as it's powered by the Midi Roller.

The Midi Roller is a hybrid unit with variable speed and bidirectional controls. The built-in high performance battery has approximately 10 hours of working time, which allows you to work anywhere without access to electricity or plug into an electric source



and charge while in use. The belt features a silicone surface and rubberized upper wheel, making the process easier. The unit is lightweight, compact and easy to transport at 40 pounds.

The Wet-Out Station is an innovative and practical addition to the Midi Roller, with no additional power source needed — it's powered by the battery-powered Midi Roller belt. You can quickly and easily set up your Wet-Out Station at the job site. It's lightweight, compact and easy to transport at 79.4 pounds. It's also simple to set up. Add the Midi Roller to create a complete powered Wet-Out Station with a combined belt length of 59 inches.



www.picotesolutions.com

BOOTH 4621

SJE RHOMBUS

INSTALLER FRIENDLY SERIES (IFS) SINGLE PHASE PANELS

The newly redesigned IFS panels make programming and system monitoring a breeze. They feature a new, easy-to-use color LCD interface on the inner door. With this interface, the panel configuration can easily be converted in the field to either timed dose or demand dose.

Other interface features include touch-safe housing, Pump Hand/Off/Auto Control selectable via menu navigation, tank level indication and setpoint monitoring at a glance, display with remaining time in each active on or off timed dose mode, and RJ45 communication connector for future expansion.

IFS Single Phase Panels are available in both simplex and duplex models. The simplex is designed to control one 120/208/240-volt pump, while the duplex controls two 120/208/240-volt single phase pumps.



Both panels are housed in 12-by-10-by-6-inch NEMA 4X ultraviolet-stabilized thermoplastic enclosures that are padlockable and include integral mounting flanges, drip shield, heavy-duty cover latches and stainless steel ¼-turn set screw.

Users who need flexibility for level monitoring will find that the panels can be changed in the field to use either floats or the patented C-Level sensor for continuous level monitoring.

For easy float replacement, these panels can be ordered with the EZ Connex float connection system; it makes replacing floats a snap, with quick release connectors and other labor-saving features.

Plus, IFS Single Phase Panels are cUL Listed and covered by SJE Rhombus' industry-leading five-year limited warranty.



SJE RHOMBUS™

888-342-5753 | www.sjerrhombus.com

BOOTH 1335

2022 WWETT SHOWCASE PRODUCT PREVIEW

ALLMAX

DATA MANAGEMENT AND REPORTING APPLICATIONS

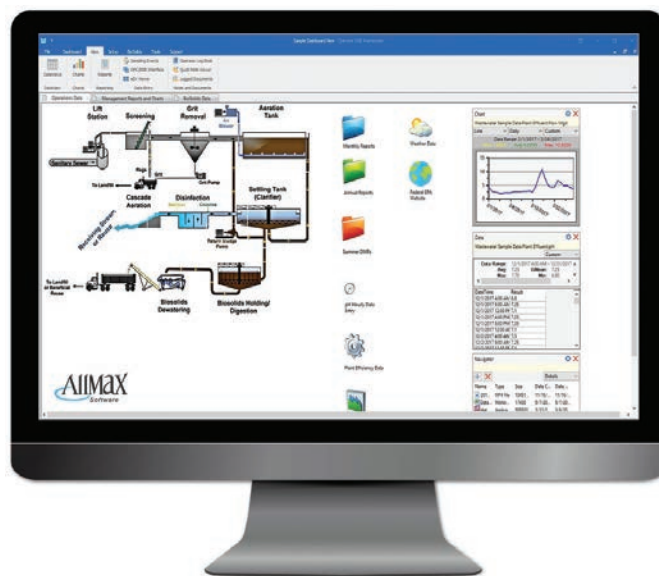
Work easier, faster, smarter with data management and reporting applications from AllMax Software. The Antero, Operator10 Wastewater, Operator10 Water and Synexus lines of software put your lab, operations and maintenance information at your fingertips.

Manage your CMMS data with Antero. The Antero application can help reduce downtime caused by breakdowns, extend equipment life, and can allow you to accomplish more when budgets are tight. Antero will assist you with work order scheduling, inventory control, real-time data collection, historical data, cost and custom reporting.

AllMax's Operator10 software is a centralized and uniform data management solution that makes regulatory reporting easier. Whether it's data from multiple sources, regulatory reporting requirements or just knowing how your plant is performing, Operator10 can handle your issues in a budget-friendly, straightforward and secure database solution.

With Synexus, set up all the industries you monitor, track sample results, limits and surcharges, as well as journal all correspondence with the industrial user.

AllMax Software has been a trusted name in the water and wastewater treatment industry for over 25 years, founded and managed by water industry professionals who understand the day-



to-day needs of the job. AllMax provides comprehensive, reliable, user-friendly programs with the flexibility to grow as needs grow, supported by a team of helpful and knowledgeable staff. Software training, product setups and customized reports are all available for your municipality or company. Schedule a free demo of the company's software packages by using the contact info below.



800-670-1867 | www.allmaxsoftware.com

BOOTH 2358

2022 WWETT SHOWCASE PRODUCT PREVIEW

REED MFG. BEVEL BOSS

Bevel Boss cordless pipe bevelers quickly and safely bevel 2-inch diameter and larger plastic pipe. The tool's unique design allows Reed Bevel Boss to provide a safe and speedy way to bevel. The cordless pipe beveler trims small- to large-diameter plastic pipe, including pipe already in the ditch. This lightweight tool significantly reduces prep time by quickly and consistently beveling when preparing multiple pipe lengths.

These pipe bevelers are used on PVC and CPVC plastic pipe, including C900, Corzan CPVC, Bionax PVCO (C909) and also ABS. Users can add bevels on most PVC glued joints and some sizes of bell and gasket joints. Adjustable for bevel length up to 1-inch, the required carbide router bit cuts evenly and efficiently.

Battery powered, this cordless pipe beveler has no fumes. Plus,



the guide plate eliminates guesswork about the bevel and yields a consistent result. To eliminate damage to the gasket, a pipe bevel is required when installing into a pipe bell. Bevels on cement joints allow for even distribution of solvent cement glue to maximize glue contact area. Always defer to pipe manufacturer specifications for bevel recommendations.

In addition to complete beveling kits, there are beveler adapter heads to fit Milwaukee, Bosch or DeWalt die grinders. Beveler adapters permit temporary conversion of the die grinder to serve as a beveler.

The cordless pipe beveler adapts to shape pipe interiors, too, by adding the optional interior shroud. Electrical and utility contractors deburr to make pipe interiors snag-free for running wires.



814-452-3691 | www.reedmfgco.com

BOOTH 1475

2022 WWETT SHOWCASE PRODUCT PREVIEW

CUES

GRANITENET WEBINSPECT

CUES' GraniteNet WebInspect is a browser-based inspection app designed to perform inspections and collect information about municipal assets, such as man-holes (including MACP v7 Level 1), hydrants, lift stations, grease traps, light poles and signage.

Perform and track tasks such as valve turning, smoke tests, brush cutting, snow plowing and more. Collect GPS points, water quality samples, flow tests, assess sewer backups — virtually any type of asset assessment or task can be quickly deployed for your organization using WebInspect, with or without your existing GIS maps.

All that's needed is an internet connection and virtually any device with a browser, such as a mobile phone or a tablet. There's no



software to install on any user devices to use GraniteNet WebInspect.

Users can streamline operations by enabling real-time, map-driven, task-oriented workflows for greater efficiency and productivity. For example, cleaning and jetting truck operators working in the field can look up their current location in the WebInspect map and initiate a "Cleaning and Jetting" task straight

from their wirelessly connected device (such as a phone). When finished, the cleaning status information will be updated in real-time so that supervisors in the office can see color-coded statuses in the map to know which lines have been completed. This enables CCTV inspections to be scheduled against the cleaned lines.



800-327-7791 | salesinfo@cuesinc.com | www.cuesinc.com

BOOTH 6011

2022 WWETT SHOWCASE PRODUCT PREVIEW

COLE publishing

Cleaner

digDIFFERENT

I&I

MUNICIPAL
SEWER
WATER

ON-SITE
installer

Plumber

PRO

Pumper

WASTEWATER PLANT OPERATORS
tpo

Outdoor Equipment Demonstrations

Tempe, Arizona

April 12-13, 2022

WEQ
WASTEWATER EQUIPMENT FAIR

Tempe Diablo Stadium

#WEQfair

WEQ

FREE TO QUALIFIED
INDUSTRY PROFESSIONALS!

Confirmed Tempe Exhibiting Companies:

Allan J. Coleman Co.
Davidson Tank
Duracable Manufacturing Co.
EPL Solutions, Inc.
GapVax, Inc.
Harben, Inc.
Hurricane Reinstatement Solutions

ITI Trailers & Truck Bodies, Inc.
KEG Technologies, Inc.
National Vacuum Equipment, Inc.
Patriot Sewer Equipment & Repair
Picote Solutions
RKI Instruments, Inc.
Sewer Equipment

US Jetting
Vac-Con, Inc.
Vacall
Vivax-Metrotech Corp.
As of: 11/23/21
MORE TO COME...

Register for FREE online at:
weqfair.com

ARTHUR PRODUCTS CO.

CNT-R-KUT CDMAXE

Want to work smarter, not harder? Clear pipe obstructions quickly, efficiently and thoroughly with the Cnt-r-KUT CDMAXe from Arthur Products. With the traditional method of nozzle on hose, the nozzle sinks to the bottom of the pipe. The CDMAXe lifts your nozzle off the pipe bottom so the cleaning resources can operate more efficiently. You can see the CDMAXe in action at www.arthurproducts.com/products/cd-max-jet-nozzle.

The Arthur Products Centering Device, or CDMAX, is manufactured from an aerospace elastomer. The CDMAX is flexible enough to conform to damaged or deformed lines and can easily be fitted in the field to fit virtually any line from 3 to 6 inches in diameter. Simply attach your ¼-, ⅜- or ½-inch MNPT hose to one end of the CDMAX and your favorite ¼-, ⅜- or ½-inch FNPT nozzle to the other end of the CDMAX and you are ready to tackle the task at hand. Three flexible lightweight centering guides of 3 and 4 inches can be quickly changed in the field to stabilize your nozzle to maximize cleaning.

The CDMAXe kit contains three guide vanes of 3, 4 and 6 inches, a 10K-rated stainless steel heat-treated body, an attachment screw tool kit, instruction manual and carry bag. The product is offered in NPT sizes: ¼-, ⅜- and ½-inch. In BSPP, the kit is



offered in ⅜-inch. Arthur Products' entire Cnt-r-KUT family of tools can be viewed at www.arthurproducts.com/cnt-r-kut-flexible-jet-nozzle or purchased at the company's online store at www.arthurproducts.com/shop.



ARTHUR PRODUCTS CO.
ENGINEERED SOLUTIONS

330-725-4905 | www.arthurproducts.com
BOOTH 4009

2022 WWETT SHOWCASE PRODUCT PREVIEW

IMPERIAL INDUSTRIES

SELF-CONTAINED AND TRUCK-MOUNTED TANKS



Imperial Industries is a premier manufacturer of self-contained and truck-mounted tanks for the commercial waste industry. The company's tanks are all custom-designed, engineered and manufactured in house. They are available in steel, aluminum or stainless steel.

For immediate needs, Imperial Industries maintains a stock inventory of its expertly made tanks, ranging in size from 100 to 6,000 gallons.

"Whether your operation calls for a custom build or an immediate solution, our promise remains the same – impeccable quality, detail-

driven design, flawless production and thoughtful service," says a company spokesperson.

Septic Truck Center

While customers can still browse Imperial's inventory in person at its facility in Rothschild, Wisconsin, they can also view all the company's truck inventory at its Septic Truck Center website at www.septictruckcenter.com. There's a wide range of septic and grease trucks, portable restroom service units, DOT-code trucks, slide-in units and vacuum trailers.



**IMPERIAL
INDUSTRIES INC**

800-558-2945 | www.imperialind.com

BOOTHS 3129 AND 4011

2022 WWETT SHOWCASE PRODUCT PREVIEW

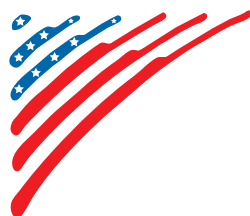
USB-USA

GATOR AND MINI GATOR NOZZLES

The all-new high-performance Gator and Mini Gator Nozzles cut and remove roots, grease, blockages and scale in various pipes ranging from 2 to 20 inches. Encased in a compact stainless steel body, the strong reinforced internal design rotates the head. Located in the head, 3D fluid mechanics smoothly direct all the incoming high-pressure water to the four rotating jets in the rear of the head and one in front. These rotating jets create an extremely powerful 360-degree all around complete cleaning of the pipe, flushing and removing debris in fewer passes. The offset front jet eliminates blockages easily and effectively.

The Gator Nozzle is capable of being used on hose between $\frac{3}{4}$ and $1\frac{1}{4}$ inches with a minimum of 40 gpm at 2,000 psi, and a maximum of 120 gpm at 2,000 psi. The Mini Gator Nozzle can be used on hose $\frac{3}{8}$ to $\frac{1}{2}$ inch with a minimum of 8 gpm at 2,000 psi and a maximum of 25 gpm at 4,000 psi.

Also available are case kits for the Gator or Mini Gator Nozzle and these include an additional skid to centralize it in a larger pipe. A different style cleaning head for the Gator and a flexible guide skid allows the nozzle to clean up to 100-inch pipe.



USB-USA

844-285-5770 | www.usb-usa.com

BOOTH 5038

2022 WWETT SHOWCASE PRODUCT PREVIEW

VIVAX-METROTECH CORP.

VCAM-DRAIN WIRELESS CAMERA SYSTEM



Vivax-Metrotech, located in Santa Clara, California, in the heart of Silicon Valley, manufactures video inspection camera systems, sonde locators and buried utility locators.

This year, the company announced its new vCam-Drain Camera System. The vCam-Drain can be used to inspect drainlines from 1 ½ inches to 4 inches up to a length of 70 feet. The vCam-Drain features a Wi-Fi reel that works with your smartphone or tablet, eliminating the need for a viewer. The vCam Mobile Controller app receives the video from the reel and controls all functions of the reel. You can adjust

the camera lights from the app, control the sonde, reset the distance counter, and record to the tablet/smartphone or USB drive on the reel.

The vCam-Drain gives the user a choice of the standard 18-millimeter (0.70-inch) nonleveling HD camera head or a 20-millimeter (0.78-inch) self-leveling HD camera head. Both cameras are field changeable by the user.

Vivax-Metrotech Corp is a worldwide leader in the manufacturing of buried utility locators and video inspection cameras.



800-446-3392 | salesusa@vxmt.com | www.vxmt.com

BOOTH 5301

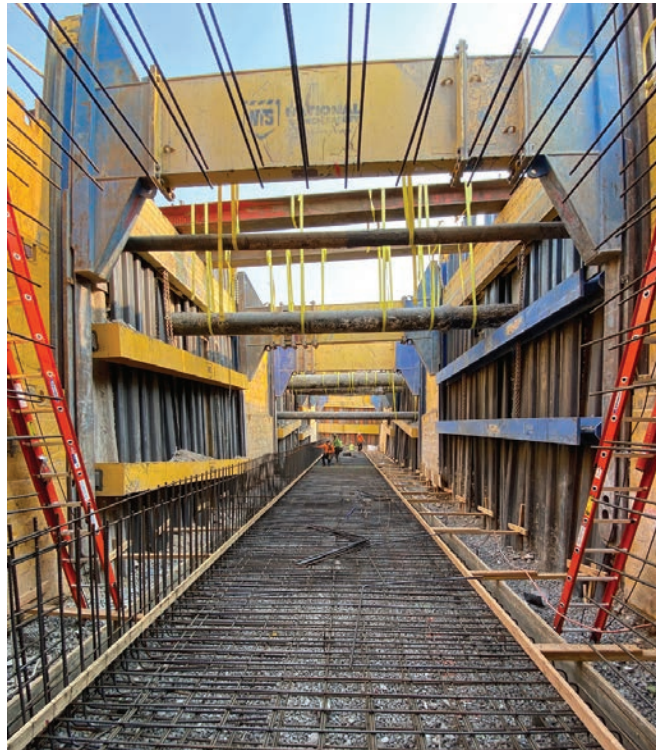
2022 WWETT SHOWCASE PRODUCT PREVIEW

NATIONAL TRENCH SAFETY

SLIDE RAIL SYSTEM

At Utah State University, crews led by general contractor Jacobsen Construction are working to expand a utility tunnel running beneath the main campus in Logan. The cast-in-place concrete structure, currently about 2 miles long and measuring 10 feet tall and 9.5 feet wide, houses USU's steam distribution system, among other essential utilities.

National Trench Safety, which has participated in several phases of these infrastructure upgrades, recently designed a shoring strategy for a large excavation running directly through the campus' main intersection. The team was challenged to devise a safe solution to execute shoring and tunnel construction without interrupting service to the 13 utilities crossing through the 160-foot-long, 18-foot-wide, 20-foot-deep trench.



To meet the project requirements, NTS specified a slide rail system manufactured by Germany-based SBH. The nine-bay system was installed by Edge Construction, the excavation contractor, and incorporated three sections of 20-foot sheeting guides that allowed for multiple operations to occur simultaneously to expedite the work.

The ability to shore a large, clear-span trench also eased Jacobsen Construction's ability to self-perform the concrete pours for the floor, walls and ceiling of the tunnel extension. Ultimately, this shoring solution helped the general contractor meet the project's tight construction schedule and minimize disruptions to both campus activities and utility service.

To learn more about the innovative, economical, time-saving shoring solutions available from NTS, visit the website below.



**NATIONAL
TRENCH SAFETY**
WHERE SERVICE MEETS EXPERTISE.

888.234.9244 • www.ntsafety.com

www.ntsafety.com
BOOTH 6647

CHERNE INDUSTRIES

I-SERIES TEST PLUGS



Cherne Industries, a part of the Oatey family of brands, is a global leader in pipe plug blocking and testing. The newly redesigned, robotically manufactured Cherne I-Series Test-Ball Plugs are innovative pneumatic plugs that are currently available for the underground/waterworks market.

Lightweight, short and flexible, Cherne I-Series plugs deliver state-of-the-art solutions for a variety of applications, including blocking and bypassing flow; installing new pipes and junction boxes, or repairing old ones; and installing or repairing utility holes.

Originally available in eight expansion ranges from 6 to 24 inches, Cherne has expanded its I-Series line of Test-Ball, Muni-Ball and Air-Loc pipe plugs to include larger sizes up to 48 inches.

Cherne I-Series Test-Ball Plugs meet U.S. and international industrial and municipal needs for engineers and contractors. The plugs offer high quality and durability, featuring robotic, mechanical bonding of aluminum end plates to the plugs' premium natural rubber to eliminate chemical bonding failures.

The I-Series Test-Ball Plugs provide improved performance and safety through optimized design and superior back pressure (maximum of 15 psi; inflation pressure of 45 psi).



800-843-7584 | www.cherneind.com

BOOTH 4304

2022 WWETT SHOWCASE PRODUCT PREVIEW

SEALING SYSTEMS INC.

I&I PREVENTION PRODUCTS

Sealing Systems Inc. is an industry leading manufacturer and distributor of quality products for sustaining and maintaining municipal sewer systems by preventing inflow and infiltration. The company's product line includes manhole chimney seals, joint seals, manhole inserts, cementitious repair material and water-stop grout.

Following are some of the benefits many municipalities have received using Sealing Systems Inc. products:

- Eliminates water and soil infiltration through pipe and structures
- Eliminates breakdown of adjusting rings on manholes and catch basins
- Eliminates costly patching
- Seals castings to structure
- Extends the service life of manhole or catch basin
- Cost effective with short- and long-term payback
- Saves taxpayers money
- Reduces the burden on wastewater treatment facilities
- Increases effective system's capacity to facilitate municipal growth
- Protects the environment (and protect yourself from regulatory exposure) by eliminating system surcharging and bypassing into rivers and lakes
- Reduces sewer backup in basements
- Quick and easy installation



800-478-2054 | www.ssisealingsystems.com

BOOTH 6718

2022 WWETT SHOWCASE PRODUCT PREVIEW

DURACABLE MFG.

DRAIN CLEANING EQUIPMENT



Duracable is the drain cleaning professional's source for top-of-the-line machines, cable, blades and all the equipment you need to handle any drain problem. Made in the U.S. with top-grade materials, the company's products are tough, powerful and long-lasting, according to the manufacturer.

Duracable manufactures each drain cleaning machine to exact standards using durable materials and time-tested design. Whether you need a large sewer machine for mainlines, a nimble drain machine for a clogged sink or a versatile machine that can tackle a wide range of jobs, take a look at what Duracable has to offer.

Duracable's DuraFlex drain cable is a favorite with technicians. The company's knowledgeable customer support team can help you

get a quality cable for your work in a diameter, length and cable type suited to your situation. A variety of cable ends and splices make DuraFlex among the most versatile and long-lasting cables available.

"Whether you are tackling food waste in a kitchen sink or tree roots in a mainline, Duracable blades won't let you down," says a company spokesperson.

Made from high-carbon spring steel, Duracable blades are heat treated, rust proofed and presharpenered at the factory so they're ready to use when you receive them. Duracable has every size and shape you need for 1- to 16-inch lines. Duracable blades and chucks are designed to fit most brands of drain cleaning equipment.



DURACABLE
MANUFACTURING
— CO —

800-247-4081 | sales@duracable.com | www.duracable.com

BOOTH 1319

2022 WWETT SHOWCASE PRODUCT PREVIEW

SATELLITE INDUSTRIES

ASPEN PORTABLE RESTROOM

The Aspen standard-size portable restroom has been a staple in the sanitation industry. As such, Satellite Industries has spent the last two years refining the Aspen, to make sure it's the best possible quality for customers.

"The newly redesigned Aspen from Satellite Industries is back and better than ever and will elevate the mood of any event or job," says a company spokesperson. The new streamlined design gives the Aspen a sleek and modern feel, in a variety of colors. Satellite kept and improved the Aspen's already unique elliptical shape to add durability, strength and more interior room.

Additional new features include:

- Newly designed and more durable roof
- Rugged, large capacity drop tank with sloping lines to keep the tank top dry and clean
- Large splash-resistant urinal
- Private molded-in vent screens and included coat hook
- Enclosed door springs and closure
- Large hover handle and hands-free latch
- Impact base and new universal shelf

"As you can see, Satellite's Engineering team left no stone unturned in improving this already great restroom," says the spokesperson. "The sleek, modern design is ideal for the special events yet tough enough to handle your job. You can stand out from the crowd with the Aspen!"

For more information about the Aspen, Satellite Industries, or to speak to a representative, use the contact information below.



800-883-1123 | information@satelliteindustries.com
satelliteindustries.com

BOOTH 3317

2022 WWETT SHOWCASE PRODUCT PREVIEW

MYTANA

M224 HIGH-SPEED CUTTER

MyTana is introducing a new tool which delivers fast, safe and efficient cleaning of 2- to 4-inch lines. The M224 High-Speed Cutter has a robust internal drive so you can have two-handed control of the flex shaft cable as you quickly power through roots, scale, grease, wipes and more.

Managing the cable with two hands allows the operator to completely focus on the resistance coming from the blockage while starting or stopping the machine as necessary with the foot pedal. For safety, an emergency stop is on board the unit, and the motor has a torque-load controller as an added layer of protection to prevent damage to the flex-shaft wiring.

The flexible shaft cable is 75 feet long and spins up to 1,580 rpm, letting attachments remove scale and pulverize blockages in residential



a breeze. Anti-skid feet stabilize the cutter during operation.

The exceptionally quiet M224 is powered by standard household current.

and commercial lines. It is encased in a durable poly jacket that can be wiped down as it is retracted from the pipe. An enclosed cable drum minimizes debris in the work area.

The M224 shaft has a slip-joint fitting so it can accept a variety of attachments. Quickly change sizes of cutting blades or attach specialized tools like MyTana's new one-piece chain-knocker sets. A universal whip lets you add a tool of your choice.

Manufactured for maximum mobility, this compact cutter has a luggage-style handle which telescopes to 43 inches. Easy tilt and wide-stance wheels make transport



800-328-8170 | www.mytana.com

BOOTH 5307

2022 WWETT SHOWCASE PRODUCT PREVIEW

ROLL-N-VAC BY TRUEBITE

THE ROLL-N-VAC HD2 HYDRO EXTRACTOR

The Roll-n-Vac HD2 Hydro Extractor aims to reshape the industry by saving time doing the everyday tasks that you hate the most.

Some of the things the Roll-n-Vac is capable of include:

- Vacuuming sludge to a depth of 12 feet directly into a wheelbarrow for disposal
- Cleaning out clogged lines
- Surgically excavating buried broken plumbing and electrical lines when used with a pressure washer or air spade
- Cleaning out 300 pounds from a sand filter in less than five minutes
- Running on a standard 120-volt A/C 15-amp line
- Increasing your bottom line and saving your back

The Roll-n-Vac is made in the United States and has powerful performance, as it is built with an industrial-grade vacuum motor. It collects large volumes of material quickly and easily navigates rough ground. Other features of the Roll-n-Vac include an industrial-grade extractor, float shut-off, reverse blower, lifting handles, heavy-duty structure and a 2 1/2-by-10-inch hose.

The company is always seeking ways to improve the Roll-n-Vac, and in the last year it has made the unit blue using specially formulated plastic for longer life and UV protection, as well as changed its base plate gasket/seal for better sealing and longer life.



800-356-8059 | 607-786-2139 | www.roll-n-vac.com

BOOTH 3110

2022 WWETT SHOWCASE PRODUCT PREVIEW

COMET PUMPS

HIGH-PRESSURE TRIPLEX PLUNGER PUMPS



For over 60 years, Comet pumps has been a global manufacturer of high-pressure triplex plunger pumps. Based in Reggio Emilia, Italy, Comet takes pride in producing high-performance plunger pumps for the hydroexcavating and water jetting markets.

With performance capabilities ranging from 23 gpm and 4,000 psi, easily select the ideal pump for your equipment — big or small.

Customers receive the ultimate setup flexibility, as each pump is lightweight and compact while having the ability to come standard with a hollow or solid shaft.

Comet pumps are designed with long-lasting components, keeping maintenance to a minimum and performance at an all-time high without sacrificing profits. Comet Pumps are backed by a five-year warranty, giving you peace of mind.



www.cometpump.com

BOOTH 1418

2022 WWETT SHOWCASE PRODUCT PREVIEW

SMARTVAC HYDROVACS

THE SMARTVAC



SmartVac offers an innovative product for the North American hydrovac market. The company prides itself on its unique offerings and continues to grow in the American and Canadian markets.

SmartVac's mission is to manufacture smart solutions for urban infrastructure. This family-owned business has created an impressive modular build with patented tank designs and innovative features to dig effectively and efficiently. SmartVac is built specifically for the municipal market. The lightweight, compact trucks maneuver in tight alleyways, are non-intrusive in residential areas and are fully automated for solo operation. The single- and tandem-axle offer the largest legal debris payload and are powerful while still being light and fast.

SmartVac innovation is influencing the hydrovac industry, and the lightweight single and tandem trucks with the touch-screen control system are in demand. Built to meet the most demanding safe-digging conditions, SmartVac is the answer for the urban eco-conscious consumer. The modular design makes the exporting of SmartVac cost effective, and has been successful in the China market because it builds on the local truck chassis of choice.

A leader in innovation, SmartVac looks to the future. Current designs are underway to utilize an electric truck chassis.



403-786-9966 | www.smartvac.ca

BOOTH 6325

ASHLAND PUMP

WHOLESALE PUMP PRODUCTS



Ashland Pump is located in Ashland, Ohio, and manufactures a complete line of pump products for the residential wholesale market. It is a family owned business with over 35 years of experience manufacturing pumps. The company says it's committed to offering a quality, dependable product with excellent customer service. To support that, it stocks thousands of pumps in its 130,000-square-foot warehouse because having inventory on hand for customers is important.

The company assembles a wide variety of pumps (2 to 20 hp grinders and solids-handling pumps) in Ashland and has a full-service testing lab to support all products. Ashland Pump officials say they

are thoroughly committed to supporting the professional marketplace with a full line of sump, sewage, effluent and grinder pumps for the residential market.

That means customers will have a brand that is only sold into the plumbing wholesale channel. "And it means that you will have a partner that understands your business and customers and the importance of brand loyalty to you and the professional trade," says a company spokesperson. "Ashland Pump is a brand you can trust to be honest, dependable and professional in everything that we do, from our products to our service — we are here for you!"



P U M P

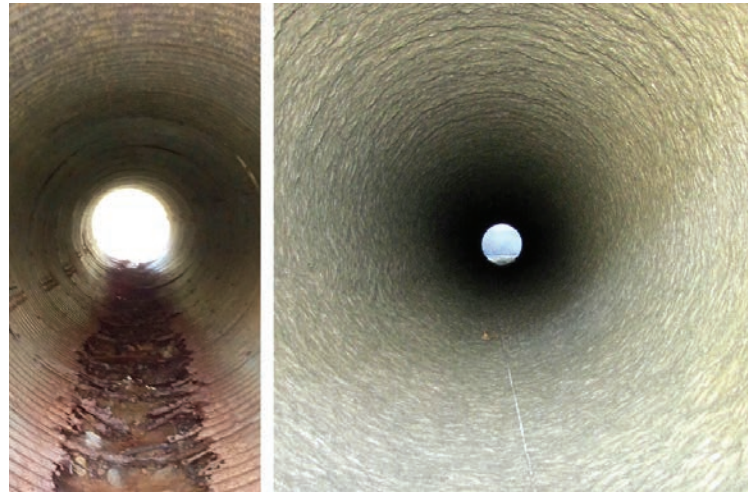
855-281-6830 | www.ashlandpump.com

BOOTH 2044

2022 WWETT SHOWCASE PRODUCT PREVIEW

THE STRONG COMPANY

STORM SEAL



S torm Seal is a cost-effective solution for structural fatigue and corrosion in stormwater pipes. Storm Seal provides a system to stop inflow, infiltration, exfiltration and restore structural integrity. Storm Seal is a specially formulated, fiber-reinforced cementitious mixture designed for rehabilitating corrugated metal pipes, culverts, concrete pipes, catch basins and other stormwater structures.

This product is made with Portland cement and is recommended in applications where there is no evidence of sulfide conditions. Storm Seal is a high-strength mortar, reaching compressive strength of over 9,000 psi. It has excellent freeze/thaw resistance, and its erosion resistance is comparable to concrete pipes and culverts. Storm Seal

was evaluated by the AASHTO National Transportation Product Evaluation Program and is approved by departments of transportation across the United States.

Storm Seal is tried and true trenchless technology. Eliminating the need to dig and replace structures is both time and cost effective and causes minimal traffic disruption. Storm Seal is a monolithic liner (free of any joints) and can be applied to a variety of shapes and structures. It may be centrifugally cast using the Strong-Seal Systems mixer, pump and spinner; it may also be sprayed manually. Storm Seal is specifically formulated for stormwater applications and culverts 30 inches in diameter or larger.



800-982-8009 | info@strongseal.com | www.strongseal.com

BOOTH 6629

CREWPLEX

HANDS-FREE CREW COMMUNICATION



CrewPlex is a hands-free, full-duplex wireless communication solution to help crews overcome the challenges of communicating continuously in environments where noise, distance and task complexity can affect safety and productivity.

CrewPlex enables you to connect your entire vacuum truck, camera truck and support personnel team with one system. Users can talk to and hear each other in real-time without delay and without voice triggering or pushing a button. High quality audio provides better communication in all environments, especially in vacuum truck operations where noise levels can exceed 100 decibels.

Available connectivity to two-way radio systems keeps workers in touch with a supervisor and extends the communication reach of

an entire work team. A full range of headset options is available to fit a variety of job and application needs.

As a leading provider of communication systems for FBS/FCS football teams, CrewPlex knows how to deliver team communications that work in tough, challenging game-day environments. “We’ve taken that know-how and put it to work for crews,” says a company spokesperson. “When the job is on the line and the safety of the crew is critical, CrewPlex provides clear, dependable communication to everyone to ensure the highest levels of safety, productivity and job satisfaction. Stop undercommunicating by empowering your crew with hands-free audio technology. After all, the goal is to work better and safer as a team than when they work apart.”



334-321-1400 | www.crewplex.com

BOOTH 3118

2022 WWETT SHOWCASE PRODUCT PREVIEW

2022 WWETT EXHIBITOR LIST | Current as of 11.22.21

COMPANY BOOTH

A

A Restroom Trailer Co. (ART Co.)	4419, 4421, 4423, 4614
Advanced Drainage Systems, Inc.	6311
Advanced Infrastructure Technologies	7200
Aero-Stream, LLC	1314
Air-Weigh On-Board Scales	1121
AK Industries, Inc.	2519
Alderon Industries, Inc.	1469
Alkota Cleaning Systems inc.	7492
Allan J. Coleman	1135, 1841
Allied Graphics	5008
AllMax Software Inc.	2358
Alpine Equipment Funding	3105
Ameri-Can Engineering	2218
American Pipelining Supplies	1219
American Sewer Parts and Cleaning Inc.	6723
Amthor International	2135
Anchor Graphics Inc	3025
AP Equipment Financing	7221
Apex CIPP Solutions.	4329, 5462
APPI-Technology	6339
APR Plastic Fabricating Inc.	1172
Aqua Mole Technologies LLC.	3000
AQUA-Zyme Disposal Systems, Inc.	2172
Aries Industries, Inc.	4127
ARMAL, INC.	1361
Armstrong Equip/Garnet Instruments	1515
Arthur Products Co.	4009
Ascentium Capital.	5438
Ashland Pump	2044
Avanti International	6335

COMPANY BOOTH

B

Avran Pumps	5729, 5828
Bad Dog Tools	1162
Bald Eagle Pellet co.	3028
Beacon Funding	1130
BENLEE	1667
Best Enterprises, Inc.	2535
BioMicrobics, Inc.	5052
BioOne	5335
BMO Transportation Finance.	5400
Boerger, LLC	1567
BOSS Industries	5813



Bright Technologies, Specialty Division of Sebright Products, Inc 4521, 4620
AD ON PAGE 15

Brown Bear Corporation	2016
Bucher Municipal	2014
Business Acquisition & Merger Associates	6946
Butterworth Inc.	7484

C



Cam Spray 1369
ADS ON PAGES 17, 27

Can-Explore	4440
Cat Pumps	1735
CCI Piping Systems	2008

COMPANY BOOTH

Century Chemical Corp.	3016
CEO Warrior LLC	3021
Cherne Industries.	4304
CIT	2151



Comet Pumps	1418
Comforts of Home Services, Inc.	5745, 5747, 5846, 5848
Commercial Credit Group	6203
Conde Pumps	6207
Cougar Vibration Div of Martin Engineering	5337
Coxreels	7217
CPI Products	1144
AD ON PAGE 21	

CreteX Specialty Products	1857
CrewPlex	3118
CRO	6639
Crosspoint Power and Refrigeration	7486
Crust Busters	6026
CTSpec	3730
CUES, Inc.	6011
Custom Rebuilt	4741
Custom Truck One Source	6043

D

D.R.E. Custom Trailers	2545
DCD - Drincables Direct	2501
Del Vel Chem Co.	4806
Dirt Works Environmental	5046
Ditch Witch/Subsite.	5009, 5209
Dultmeier Sales	6755
Duracable Manufacturing Co.	1319


COMPANY	BOOTH
Dyna Flex	5048
Dynablast AD ON PAGE 29	6633
Dynamic Print + Promotions	1166

E	
E-Tank, Ltd..	2164
EarthBuster	1126
Easy-Kleen Pressure Systems Ltd.	2301
Eaton Corporation.	2347
Elite Equipment Rental	6834
EMCO, Inc.	6724
Endura Paint	2742
Engin & Accessory, Inc.	2263
Environmental Works	3007
Enz USA Inc.	2134, 2136, 2144



EPL Solutions, Inc.	1519
EQ Puncture	6434
Explorer Trailers.	6747, 6847
EZ TREAT, INC	2350

F	
Fast Pipe Lining	2165
Fats, Oils, & Grease BMP	3116
Forbest Products Co.	6617
Ford Pro	6411
Foremost.	6421

	
FORMADRAIN Inc.	4831
Franklin Electric	2245
Fruitland Manufacturing	5062
FS Depot	5445

COMPANY	BOOTH
FS Solutions	5445
Funk Brothers Manufacturing, LLC	5440

G	
GapVax, Inc.	2200



General Pipe Cleaners AD ON PAGE 3	5363, 5365
--	------------

General Pump AD ON PAGE 11	4839
--------------------------------------	------

Geoflow, Inc.	6205
GI Industries Inc.	4939
Giant Industries	1227
Global Materials Company	2555
Gorman-Rupp Pumps.	3035
Greener Day Solutions	6959



Guzzler Manufacturing, Inc. AD ON PAGE 45	5445
---	------

H	
Hackney Truck Bodies	7627



HammerHead Trenchless AD ON PAGE 19	4139
---	------

Hannay Reels	5022
Harben	2801
HIBLOW USA	2559
Hibon Inc.	7041



HotJet USA AD ON PAGE 83	4305
------------------------------------	------

COMPANY	BOOTH
HOTROD Septic Treatment	2553



Howden AD ON PAGE 47	3001
--------------------------------	------

HRS	1635
Huntington Asset Finance	3126
Hurco Technologies, Inc.	4017
Hydra-Flex, Inc.	2038
Hydra-Tech Pumps	3011

I	
IAPMO R&T	1215
ICS	3128
Idrojet srl.	5436



Imperial Industries, Inc.	3129, 4011
IMPREG	6057
In The Round Dewatering, Inc	2763, 2862
Infiltrator Water Technologies	2335
Infinity Trailer	5931
Informa Markets - WWETT Show	5902
InfoSense, Inc..	5432
Infrastructure Repair Systems, Inc.	6206
Infratech Solutions	2162
Innovative Sewer Technologies	6021
Internal Pipe Technologies (IPT)	4101
International Link Trucks & Equipment	3009
IPEX.	1835, 1839
IPP Solutions, LLC	4337
ITpipes	2966

COMPANY BOOTH

J

J&J Portable Sanitation Products 2319
 Jet Inc 2566



Jetter Depot 2655
 Jetters Northwest 1551
 Joe Johnson Equipment, Inc.. 5445
 Johnny's Choice by Chemcorp. 2251
 Jurop S.p.a. 6157

K

Kaiser Premier 5417
 Kanaflex Corporation 6936
 Kayden Environmental Services 1170
 KEG Technologies, Inc. 2411
 Keller North America 3005
 Kobus Inc 4810
 KSPprints.com and HalfWraps.com 4341
 Kuriyama of America 6036

L

Ladtech, Inc. 6954
 LANSAS Products 6432
 Lenzyme, Inc. 4012
 Liberty Pumps 2811



LightRay 5431
AD ON PAGE 33
 Linxup 6843
 LiQuiTube Total Tire Maintenance 1123
 LobePro Rotary Pumps 6940
 Logiball Inc. 5056

COMPANY BOOTH

M

Madewell Products Corporation 6405
 Mailhot Industries 6438
 Manhole guard 2156
 Manufactured Technologies Corporation (MTC). 6321
 MASPORT INC 2257
 MaxLiner 1151
 Merrell Bros., Inc. Disposal Solutions 3716
 Merritt Hall Insurance. 2744
 Miller Pipeline 6952
 Millner - Haufen Tool Co. 6054
 Milwaukee Rubber Products, Inc. 3030
 Milwaukee Tool 1641
 Mobile Power 2017
 Mody Pumps. 3027
 Monoform LLC 6436
 Moro USA Inc 2152



MyTana 5307

N

National Precast Concrete Association 6859
 National Trench Safety 6647
 National Truck Center. 1327
 National Vacuum Equipment 4000
 NORWECO, INC. 3702
 Novaflex Hose 1520
 NozzTeq Inc 2159
 NSF International 5849



NuFlow Technologies 2601
AD ON PAGE 49

COMPANY BOOTH

O

Oakmont Capital Services 3112
 OBIC, LLC 3108
 OceanQuip Connectors, LLC 6012
 Ohio Power Tool 1541
 OMSI Transmissions, Inc. 2032
 Orenco Systems. 2145
 Ox Equipment Inc. 6759, 6761, 6860

P

PA NAM Corp. 5843
 Pat's Pump & Blower 2010
 Pelsue Company 6058
 Perma-Liner Industries / APM / LMK Technologies. 5431
 Petersen Products Co. 2020
 Phoenix USA Inc. 6621



Picote Solutions 4621
 Pik Rite, Inc. 4405, 4412, 4413, 4415
 Pinnacle Manufacturing, LLC. 1127
 Pipe Lining Supply Corporation 7046
 Pipe Trekker 6315
 PipeLogix. 7054, 7252
 PipeTech Software 5458
 Piranha Hose Products 6040
 Plastiflex 5434
 PlugCo 6105
 Poly-Flow Acquisitions LLC. 2015
 Polylok, Inc. 2116
 PORTA PRO CHEM 4311
 PortaLogix 5613, 5710

COMPANY BOOTH

POSM Software LLC	5442
Pow-r Mole Trenchless Solutions / Warrior Thermoform	1661
Precision Products Enterprises LLC	2019
Presvac Systems	4527
Prime Resins.	5054
PrimeFyre, LLC	6020
PrimeLine Products, Inc	4731
Prinsco	1218
Processwerx, LLC	6204
ProKASRO Services USA, Inc.	3600
Pumptec Inc.	5020

R

RadComm Radiation Detection Systems . . .	1827
Raincatcher	3104
Ramex srl	1421
RapidView IBAK North America	5045
Ratech Electronics	7207
Rausch Electronics USA, LLC.	6435
RC INDUSTRIES.	5333
Reed Manufacturing Co.	1475
Reline America, LLC	4840
Rich Specialty Trailers	5719, 5721, 5725, 5820

RIDGID	1141
AD ON PAGE 13	
Ring-O-Matic, Inc	5317
RinnoVision Inc.	2018
Ritam Technologies, LLC	4800
Rival Hydrovac Inc.	6421
AD ON PAGE 9	
Robocam America INC	6726
RODDIE INC.	3115

COMPANY BOOTH

Roeda Inc. - Signs.Print.Apparel.	2011
Roll-n-Vac by Truebite	3110



ROOTRAT DRAIN CLEANING NOZZLES.	4013
---	------



RootX Root Control	6107
AD ON BACK COVER	

Roth North America	2748
Rush Refuse Systems	4410, 4411
Rush-Overland Manufacturing	1351

S

SAERTEX multiCom LP	3401
SALCOR UV DISINFECTION	5050



Satellite Industries	3317
Schulte Supply	1631, 1831
Scotty's Recycling & Veriflux	4313



Screenco Systems LLC	5325, 5331
AD ON PAGE 25	

Sealing Systems, Inc..	6718
See Water Inc..	2767
Septic distribution	1817
ServiceCore	4317
ServiceTitan	2021
Sewer Equipment	5403
SEWER ROBOTICS - PRO-JETTING	2843
SewerAI	6445
SEWERIN	1873
AD ON PAGE 31	

COMPANY BOOTH

SewerProShop, LLC	7212
ShuBee®	6625
Signpost	4315
SJE Rhombus / CSI Controls	1335
SmartVac Hydrovacs.	6325
Sonetics Corporation	5341
Source One Environmental and Ferco Inc.	3407
Sourcwell.	3120



Southland Tool Mfg. Inc.	3106
Spartan Tool	5031
Stamp Works	3017
Stauffer Diesel Inc	6720
Stetco	2128
SubSurface Instruments, Inc.	1115

Subsite Electronics	5209
AD ON PAGE 7	

Subtech Design & Manufacturing Inc.	3105
---	------

Super Products LLC	6705
AD ON PAGE 23	

Superior Pump / Pedrollo	1573
Superior Signal Company LLC	5018
Supervac.	5763
Surco Portable Sanitation Products.	1867
Suttner America.	1134

T

T&T Tools Inc.	3034
TBD	5702
TBD	1623, 1722
Tblustar	2002
TERREMAX	1829
The Shooter	6953

COMPANY **BOOTH**

The Strong Company, Inc.	6629
THIEMAN TAILGATES INC	1627, 1726
Thompson Pump and Manufacturing Co. Inc.	2153
Tiger Payment Solutions	3124
Titan Logix	3130
TOPP INDUSTRIES, INC.	1527
Tornado Global Hydrovac	6342
Trans Lease, Inc.	6716
Transfer Oil, Inc	2649
Trenchless Equipment	3105
Triple Crown Products	5339



TruGrit Traction 7202



TRUVAC by Vactor Manufacturing, Inc 5445
AD ON PAGE 37

TRY TEK Machine Works, Inc. 5821

Tsurumi Pump 1869

TT Technologies, Inc. 6257

Tuff-Jon. 4002

Turbo-Fog 3004, 3006

U

U.S.SAWS 1222

COMPANY **BOOTH**

Udor USA.	1375
UEMSI / HTV, Inc.	3008
UltraLav	2749, 2751, 2850
United Rentals, Inc.	2743
US FLEET TRACKING	2026
US Jetting	5607, 5609, 5806
USA Borescopes.	5012
USB-USA	5038
UV Wizards	4321

V

Vac-Con, Inc. 2619
AD ON PAGE 35

Vac2Go. 6611



Vactor Manufacturing. 5445
AD ON PAGE 43



Vacuum Truck Rentals/Vac Truck Depot 3012
AD ON PAGE 41

Vanair 5359

VARCO PRO SUPPLY 3309

Vaughan Company, Inc. 2466

Verizon Connect 2643

Vermeer Corporation. 6029

COMPANY **BOOTH**



Vivax-Metrotech Corp. 5301

W

Wachs Utility Products 5002

Walex Products Company, Inc. 1673

Warthog Nozzles By StoneAge, Inc. 6305

Webfleet Solutions 2654

Webtrol Pumps 1535

Westech Vac Systems 5445

Western Equipment Finance 5430

Wieser Concrete 4804



WinCan LLC. 6005
AD ON PAGE 39

Wind River Environmental 7285

Wohler USA, Inc. 1863

Z

Z PLUMBERZ 5739, 5741, 5838, 5840

ZipDrain 1422

Zoeller Pump Company 1561

Zoom Drain 5345



VIEW THE 2022 WWETT SHOWCASE ONLINE ALL YEAR:

» www.colepublishing.com/2022WWETT «

COLEpublishing

Cleaner

digDIFFERENT

I&I

MUNICIPAL
SEWER
WATER

ON-SITE
installer

Plumber

PRO
PUMP & REPAIR SERVICE

Pumper

WASTEWATER PLANT OPERATORS
tpo

Outdoor Equipment Demonstrations

Tempe, Arizona

April 12-13, 2022

WEQ
WASTEWATER EQUIPMENT FAIR

Tempe Diablo Stadium

#WEQfair

WEQ

FREE TO QUALIFIED
INDUSTRY PROFESSIONALS!

Confirmed Tempe Exhibiting Companies:

Allan J. Coleman Co.
Davidson Tank
Duracable Manufacturing Co.
EPL Solutions, Inc.
GapVax, Inc.
Harben, Inc.
Hurricane Reinstatement Solutions

ITI Trailers & Truck Bodies, Inc.
KEG Technologies, Inc.
National Vacuum Equipment, Inc.
Patriot Sewer Equipment & Repair
Picote Solutions
RKI Instruments, Inc.
Sewer Equipment

US Jetting
Vac-Con, Inc.
Vacall
Vivax-Metrotech Corp.
As of: 11/23/21
MORE TO COME...

Register for FREE online at:
weqfair.com

HOTJET USA

DRAIN LINE CLEANING BUSINESS PACKAGE



For drain line cleaning professionals looking to start or expand their jetter division, the HotJet USA Drain Line Cleaning Business Package — featuring the bestselling HotJet II — offers great value.

The HotJet II features 10 gpm at 4,000 psi with a 35 hp Vanguard Engine (made by Toyota). Including everything needed to clean drains from 2 to 12 inches with hot or cold water, the HotJet II Drain Line Business Package is a complete set up that comes with a choice of a handheld or roll-around electric jetter, inspection camera and locator.

This package also includes safety and operational training at the HotJet USA facility in Salt Lake City, Utah. A cold water drain line cleaning business package is also available.

HotJet USA offers easy financing options, or if needs require, customized solutions. HotJet USA engineers can provide customized vacuum/jetter combo units and jetting equipment build outs for trailers, skids, trucks and van installs.



800-624-8186 | www.hotjetusa.com

BOOTH 4305

2022 WWETT SHOWCASE PRODUCT PREVIEW

www.hotjetusa.com

OFFICIAL VENDOR FOR



HotJetusa[®]

vwelt BOOTH 4305

Utility Locator

Premium Inspection Camera

Portable Electric Jetter

INCLUDES THE BEST SELLING
HOTJET II[®]

- ▶ 10GPM @ 4,000 PSI
- ▶ 35HP VANGUARD ENGINE
MANUFACTURED BY TOYOTA
- ▶ SOLID DIAMOND STEEL
DECK TRAILER
- ▶ 2x - 3,500 LB. TANDEM AXLES
- ▶ 300' PREMIUM JETTER HOSE
- ▶ 330 GALLON WATER TANK
- ▶ RUNS HOT OR COLD WATER
- ▶ CLEANS 2" to 12" LINES

HOTJET USA PRESENTS THE

ULTIMATE

DRAIN LINE CLEANING BUSINESS PACKAGE

INCLUDES EVERYTHING YOU NEED TO START A
DRAIN LINE CLEANING BUSINESS*:

- TOP SELLING DRAIN LINE TRAILER JETTER
- DRAIN LINE INSPECTION CAMERA
- RYCOM UTILITY LOCATOR
- PORTABLE ELECTRIC JETTER
- EQUIPMENT SAFETY & OPERATIONAL TRAINING

* Contact us for current equipment/freight pricing & manufacturing leadtimes.
Price includes travel (lower 48 states only), food & housing for training at our facility in Utah.

1.800.624.8186

14773 HERITAGE CREST WAY
RIVERTON, UTAH 84065
WWW.HOTJETUSA.COM



ROOTX



**“I TRUST
ROOTX
BECAUSE
IT WORKS.”**

Steve Cijka,
Chief Operator, Town of Brandon, VT

JUST MIX, POUR, AND YOU'RE GOOD TO GO.

There was a time when Steve Cijka and the crews in Brandon, VT used to contract out their root control work. Then they found an easy-to-use, more affordable option: RootX®. Today, they can do all of their root control work with their existing equipment and crews.



**FIND OUT HOW EASY ROOT CONTROL
CAN BE AT WWETT BOOTH #6107**

To purchase RootX®, or to learn more, visit www.RootX.com, or talk to your RootX® representative at 1-800-844-4974.

**THE RIGHT SOLUTION.
RIGHT NOW.**

