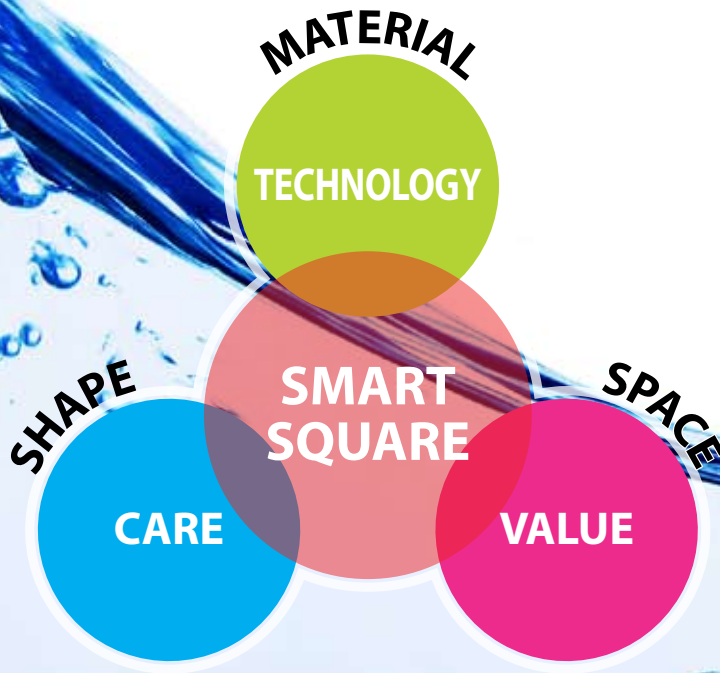


# Hyundai IT Designs Identity

**WE DESIGN YOUR NEED !**

As an expert in display solutions, Hyundai IT brings innovative products to the market with the latest technology. As a result, there are innovative display solutions which will revolutionize the display market with state-of-the-art technology, new functions and new designs.





# Multi-Vision

## Liberate Yourself from the Old-Fashioned Way and Reborn with Hyundai IT Multi-Vision

Without limitation of shape and size, HUYNDAI IT Multi-vision delivers bright, bold images that are sure to engage and entertain audiences every time ensuring Full High Definition.





# Multi-Vision

## Standout with Hyundai IT Display Solution.

HYUNDAI IT provides not only High Definition image and high quality sound but also bidirectional application based on touch type interactive display which makes it possible to interact with users for the right information search.



**ART WALL**  
Realization of Video Art with motion graphic



**THEATER**  
Movie information, Theater guide



**GOVERNMENT OFFICE**  
City hall / Policy advertisement



**SHOPPING CENTER**  
Advertisement center, Video Art



**SUBWAY**  
Advertisement center, Video Art



**HOTEL LOBBY**  
Hotel guide, Target advertisement



**INTERNATIONAL AIRPORT**  
Flight route information, Target advertisement media



**EXHIBIT HALL**  
Exhibit hall, event guide



**LARGE HALL**  
Large image display in Multi-Complex Hall



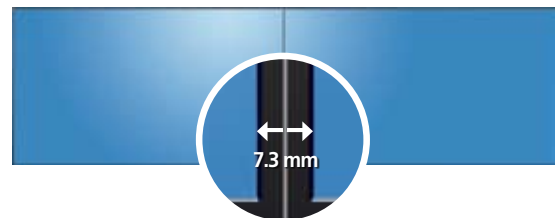
### Built-In Video Wall

HYUNDAI IT Public Displays (from 20" to 70") has built-in video wall solution to maximize your creative message delivery in a limited space.



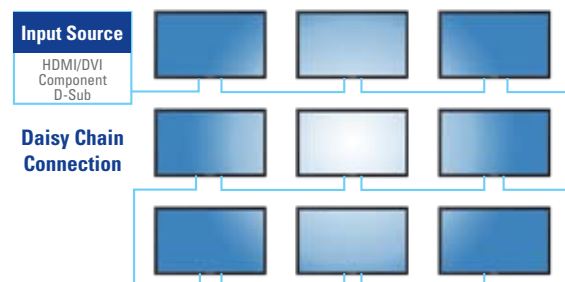
### Super Narrow Bezel

Combined with the cutting edge function, ultra slim bezel design ensures a maximum screen area with unified images and a minimum of viewable interruptions.



### Easy operating OSD menu and Remote control

In order to setup a multi display wall, the single units are linked by a Daisy Chain connection over HDMI, Component or the D-Sub interface. The configuration of each display can be easily set-up over the on-screen menu or the RS232C interface.



# Outdoor Digital Signage

**Challenge the Limit... Hyundai IT Outdoor Display  
Endures the Severe Weather Conditions.**

Even strong sunlight, snowstorm and rainstorm can't stop HYUNDAI IT Outdoor Digital Signage from displaying messages and images with full function operating. Now, let's test the limit of HUYNDAI IT Outdoor display.







# Outdoor Digital Signage

## Hyundai IT Outdoor Displays Ensure a Stable Operation in Any Environment.

Meeting the highest industrial standards, HYUNDAI IT outdoor displays delivers a high degree of operational reliability and superior quality image; which are essential preconditions for attracting the attention of your target audience.



**GOLF-CLUB**  
Ubiquitous golf-club realization



**NEWSSTAND**  
Video art



**BUS SHELTER**  
Bus route, Bus arrival time, Store information guide



**BUS SHELTER**  
Target information bulletin board, traffic information guide



**ENTRANCE OF AN EXHIBITION, EXPO SQUARE**  
Exhibit hall, event guide



**ENTRANCE OF AN AIRPORT**  
Airport, Airplane route, Target guide



**ENTRANCE OF AN OFFICETEL**  
Information guide of opening a business, video telephone service



**INTELLIGENT BUILDING**  
Building interior, each floor information, advertisement bulletin board



**ENTRANCE OF A HOTEL**  
Hotel reservation, room information guide



### Application of Optical Bonding Technique

HYUNDAI IT provides special displays which are based on the Optical Bonding for installations in environments with the brightest lightning conditions. Make your messages and images clear and readable under even bright sunlight!



### Auto Temperature Control System

HYUNDAI IT Outdoor display ensures a stable operation from the scorching heat and cold wave with a smart air-looping-system controlling interior temperature automatically.



### LED BLU(Back Light Unit)

By using LEDs instead of conventional CCFL tubes, HYUNDAI IT displays can produce remarkably brilliant images with up to 2500 nit. The newest and the brightest you can get!



### Anti-Vandal Protection

Thanks to a special tempered security glass. HYUNDAI IT's outdoor displays are protected against any vandalism attacks using Anti-Vandal Glass Bonding technique improving in durability from outside damage.



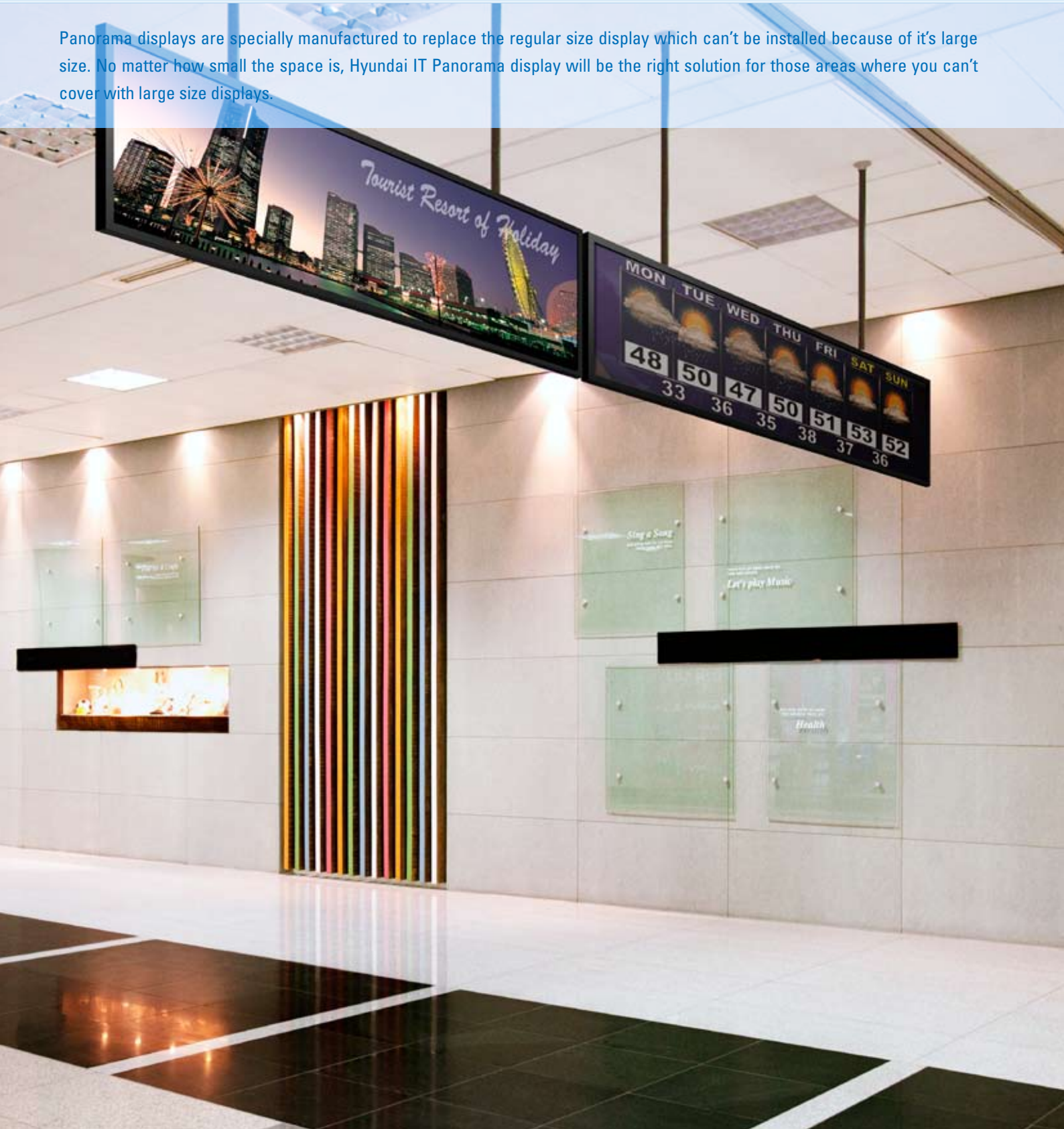
### What is an Anti-Vandal?

Vandal Bonding is the technology in which the LCD surface is bonded with the invisible glass thin screen to prevent any damages.

# Panorama-Vision

## The Optimum Use of Space for Effective Attention Getter

Panorama displays are specially manufactured to replace the regular size display which can't be installed because of its large size. No matter how small the space is, Hyundai IT Panorama display will be the right solution for those areas where you can't cover with large size displays.





### Slim and Useful Panorama Display

Arrangement of HYUNDAI IT Panorama display will be the best choice for realization of images concerning the flow of human traffic. For example, the space between door and ceiling as well as installations in metros and trams



### Narrow Bezel

Seamless viewing experience with 12mm slim narrow bezel provides you an unified images.

### Utilizing Small Space with a Maximum Effect

Panorama displays are characterized by their special aspect ratio which height is less than half of its wide. This space saving display brings the benefit that the wide view displays will fit into places where displays with a regular height can't be installed.



# Indoor Digital Signage

## Versatile Single Screen Information Signage with Flexible Content Management

Hyundai IT Stand-Alone Public Displays can be equipped with a PC or any other AV player. In combination with digital signage software and the opportunity to update the contents via LAN, WLAN or 3G, the Stand-Alone Public Displays are the easiest and most cost effective way to deliver your messages to your target audience.





### User-Oriented UI(User Interface)

Using applications based on Windows, various file formats and contents are supported and available for use.

### Information Environment Spread Out by Touch Screen

User can search the information they want using Interactive Touch Screen. HYUNDAI IT provides you the cutting edge interactive environment of Information 2.0 which enables users to communicate with information and get the intensive service of massive information.



### Contents Renewal and Set Up through Wire/Wireless

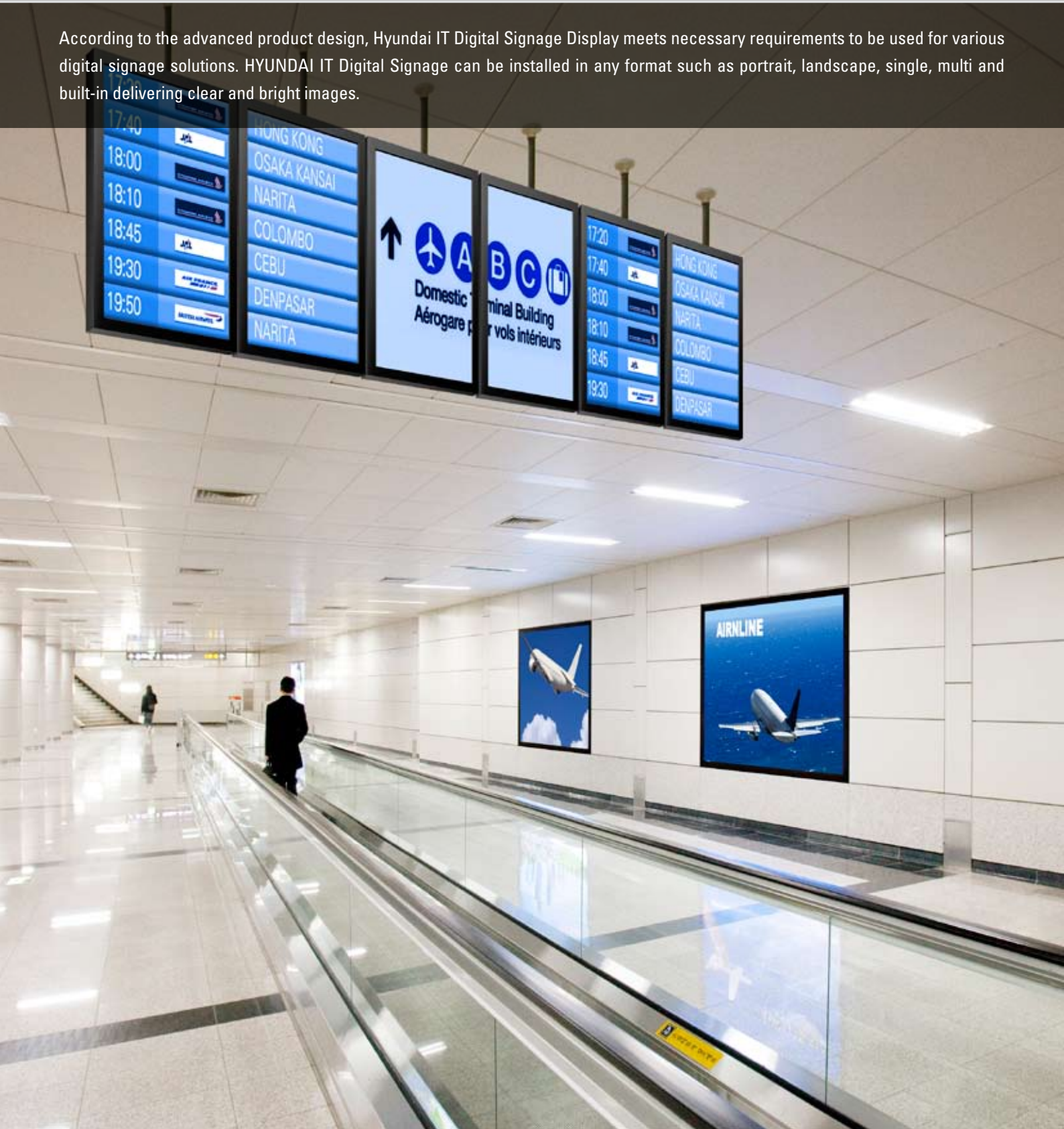
Our Stand-Alone Display can be easily relocated to the place where it's needed and set up new contents conveniently via wire/wireless depending on the place and purpose.



# Applied Digital Signage

## Attract Public Viewers with the Versatile Screen Layouts and Optimized Design.

According to the advanced product design, Hyundai IT Digital Signage Display meets necessary requirements to be used for various digital signage solutions. HYUNDAI IT Digital Signage can be installed in any format such as portrait, landscape, single, multi and built-in delivering clear and bright images.





**Wide Viewing Angle**

HYUNDAI IT digital signage display provides wider viewing angles to see brighter screen images from every angle. The wider panel viewing allows viewers to have better viewing experience.



Existing LCD



Improved LCD



**Ultra-High Native Resolution (Full HD)**

With a native resolution of 1920 x 1080, HYUNDAI IT Digital Signage displays high-resolution data information on the LCD screen without being affected by bright light or sunlight.



**Multiple Product Line**

By offering differentiated design, the range of choice has broadened depending on personal needs. HYUNDAI IT digital signage is not only limited in Stand Alone type but also provides various forms of Digital Signage such as Table display, Electric photo frame, Touch Monitor and more, to any place in need of advertisement and information.

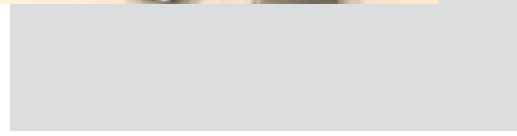


**Multiple Video Input & Output**

Providing an array of various professional input and output connectors [HDMI, DVI, Component / Composite (BNC), VGA], HYUNDAI IT Digital Signage provides an easy, and flexible choice for connection to a full range of external A/V devices.

**Special Out-Of-Home LCD Panel**

Depending on user's installation purpose, the screen can be divided freely for better information display in various forms. Our LCD panel enables you to operate during working time and deliver clear and bright images in portrait and landscape format.

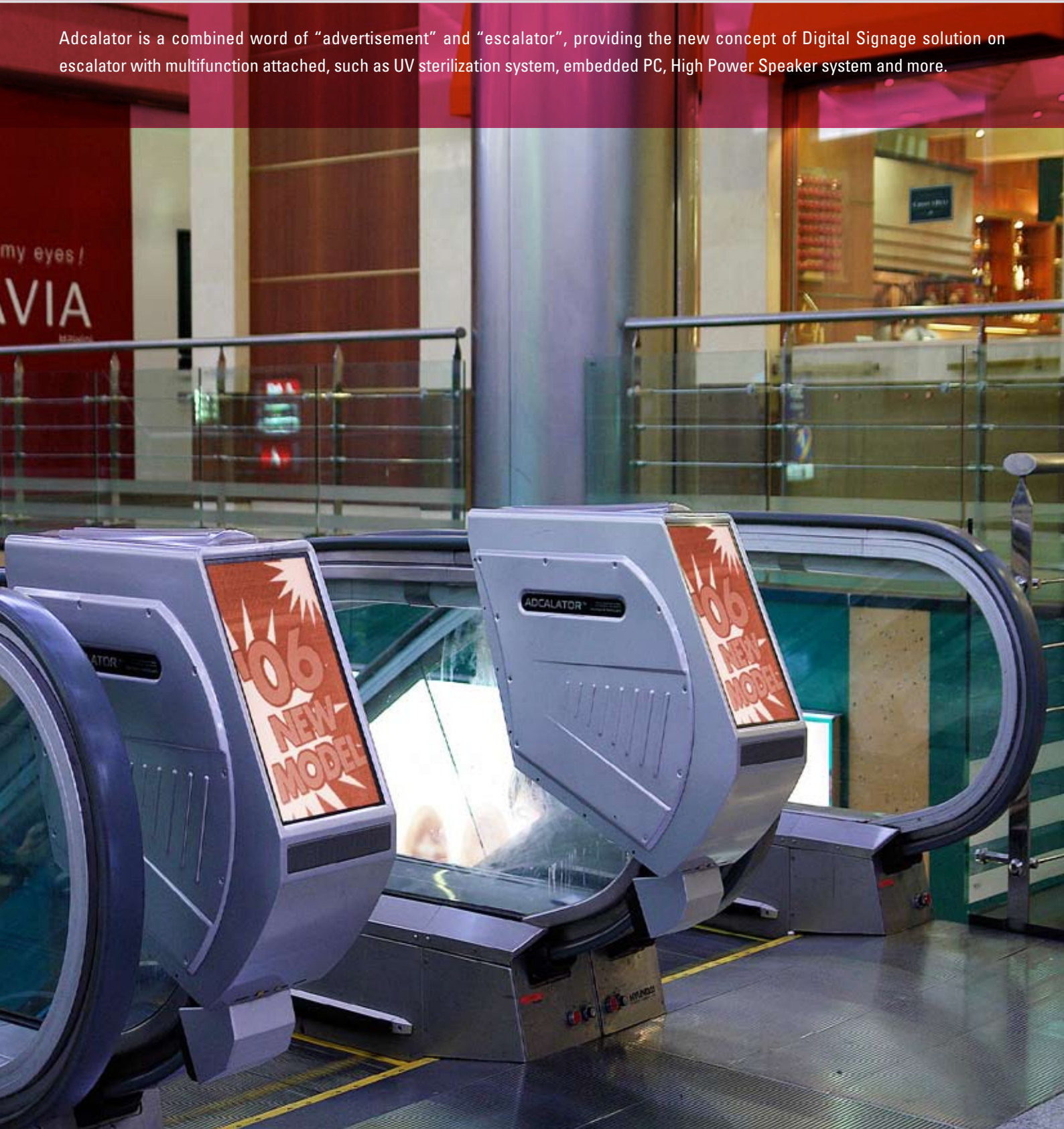




# ADCALATOR™

**Catch the Passenger's Attention with the New Concept of Display on Escalator.**

Adcalator is a combined word of "advertisement" and "escalator", providing the new concept of Digital Signage solution on escalator with multifunction attached, such as UV sterilization system, embedded PC, High Power Speaker system and more.





**Target Advertisement Mass Media**

HYUNDAI IT Adcalator can deliver information after analyzing each floor's characteristic; which enables to displaying targeted information and contents in more effective way.

**Wide viewing angle/ High resolution display**

20.1" Wide and High Resolution LCD provides to escalator passengers high quality visual information from any position.

**High Power Speaker System**

With high amplified speaker on each side, dynamic contents catches the passenger's attention providing a realistic sound.

**Strong Durability**

Unbreakable steel case, Optical Bonding Panel and AR coating glass make HYUNDAI IT Adcalator vandal proof from any expected vandalism.

**UV Sterilization System**

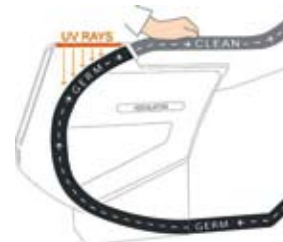
UV sterilization system on hand-rail of escalator eliminates the infection from people-hand killing 90% known micro-organisms for the better boarding environment.



Blurry Viewing(Existing Product)



Clear viewing (Improved Product)



# APPLIED DIGITAL SIGNAGE

Model Name		D320ML	D320MLI	D405ML
<b>Panel</b>	Screen Size	32"	32"	40"
	Resolution	1366 x 768 (WXGA)	1366 x 768 (WXGA)	1920 x 1080 (WUXGA)
	Aspect Ratio	16 : 9	16 : 9	16 : 9
	Display Colors	16.7M	16.7M	16.7M
	Brightness(typ)	450	450	450
	Contrast Ratio	4000:1	4000:1	4000:1
	Response Time (ms, GTG)	8	8	8
	Viewing Angle (H°/V°)	178°/178°	178°/178°	178°/178°
	Life Time	50,000Hr	50,000Hrs	50,000Hrs
<b>Touch Screen</b>	Housing	-	Black powder coated Metal	-
	Resolution	-	8384 x 4736	-
	Response Time (ms)	-	Touch : 16, Drawing : 25	-
	Glass Transparency	-	93%	-
	Glass Thickness	-	5mm with anti-vandal	-
	Available object size for Touch	-	Touch : Φ5, Stylus : Φ6	-
	Interface	-	USB 2.0	-
	Weight (kg)	-	5.5	-
	Touch Intensity	-	Over 60,000,000	-
	Detection Method	-	Infrared Rays	-
<b>Optical Bonding</b>	Light Transmittance			
	Light Reflectance			
<b>Connectivity : Input</b>	VGA (15pin D-Sub)	1	1	1
	HDMI	1	1	1
	Composite (BNC)	1	1	1
	Component (BNC)	1	1	1
	PC Audio	1	1	1
	Component Audio	1	1	1
	Composite Audio	1	1	1
	RS232C	1	1	1
<b>Connectivity : Output</b>	VGA (15pin D-Sub)	1	1	1
	HDMI (HDCP Not Supported)	1	1	1
	Composite (BNC)	1	1	1
	Component (BNC)	1	1	1
	RS-232C	1	1	1
	Speaker (Ready)	1	1	1
<b>Multi-Screen (Loop)</b>		HDMI, VGA (15pin D-Sub)	HDMI, VGA (15pin D-Sub)	HDMI, VGA (15pin D-Sub)
		Component (BNC), Composite (BNC)	Component (BNC), Composite (BNC)	Component (BNC), Composite (BNC)
<b>Power</b>	Input Voltage	100 - 240VAC	100 - 240VAC	100 - 240VAC
	Consumption (typ) (W)	140	140	200
<b>Auto Cooling System</b>		Yes (1EA)	Yes (1EA)	Yes (1EA)
<b>Auto Power Control</b>	DPMS	Yes	Yes	Yes
<b>Feature Option</b>	AR	Option	Option	Option
	Tempered Glass	Option	Yes	Option
	Optical	Option	No	Option
	Touch Screen			
	Transflective	Option	Option	Option
	Auto Brightness Control	Option	Option	Option
<b>Dimension</b>	Set (W x H x L) mm/in.	764 x 454 x 114.3 / 30.08 x 17.87 x 4.5	791 x 500 x 115.3 / 31.14 x 19.69 x 4.54	955.4 x 554.4 x 117.1 / 37.61 x 21.83 x 4.61
	Bezel Size (U, D, L, R) mm/in.	30, 30, 32, 32 / 1.18, 1.18, 1.26, 1.26	53, 53, 46, 46 / 2.09, 2.09, 1.81, 1.81	26.6, 26.6, 33.4, 33.4 / 1.05, 1.05, 1.31, 1.31
	Packed (W x H x D) mm/in.	908 x 619 x 243 / 35.75 x 24.37 x 9.57	908 x 619 x 243 / 35.75 x 34.37 x 9.57	1068 x 671 x 236 / 42.05 x 26.42 x 9.29
<b>Dimension : With Tempered Glass</b>	Set (W x H x L) mm/in.	764 x 454 x 119.3 / 30.08 x 17.87 x 4.7	791 x 500 x 115.3 / 31.14 x 19.69 x 4.54	955.4 x 554.4 x 122.1 / 37.61 x 21.83 x 4.81
	Bezel Size (U, D, L, R) mm/in.	30, 30, 32, 32 / 1.18, 1.18, 1.26, 1.26	53, 53, 46, 46 / 2.09, 2.09, 1.81, 1.81	26.6, 26.6, 33.4, 33.4 / 1.05, 1.05, 1.31, 1.31
	Packed (W x H x D) mm/in.	908 x 619 x 243 / 35.75 x 24.37 x 9.57	908 x 619 x 243 / 35.75 x 34.37 x 9.57	1068 x 671 x 236 / 42.05 x 26.42 x 9.29
<b>Weight : Without Glass</b>	Set Weight (kg/lbs.)	19 / 41.89	24.5 / 54.01	31 / 68.34
	Packed Weight (kg/lbs.)	22.5 / 49.6	28 / 61.73	35.5 / 78.26
<b>Wall Mounting Hole</b>	(W x H mm)	400 x 200	400 x 200	400 x 200
<b>Operation</b>	OSD Language	10 Lang	10 Lang	10 Lang
	Temperature (°C)	0 - 40	0 - 40	0 - 40
	Humidity (%)	20 - 80	20 - 80	20 - 80
<b>Accessories</b>		Power Cord, HDMI Cable	Power Cord, HDMI Cable	Power Cord, HDMI Cable
	Option	DVI to HDMI, D-SUB, RS-232C, Audio Cable	DVI to HDMI, D-SUB, RS-232C, Audio Cable	DVI to HDMI, D-SUB, RS-232C, Audio Cable

# APPLIED DIGITAL SIGNAGE

Model Name		D405MLI	D407ML	D407MLI
<b>Panel</b>	Screen Size	40"	40"	40"
	Resolution	1920 x 1080 (WUXGA)	1920 x 1080 (WUXGA)	1920 x 1080 (WUXGA)
	Aspect Ratio	16 : 9	16 : 9	16 : 9
	Display Colors	16.7M	16.7M	16.7M
	Brightness(typ)	450	700	700
	Contrast Ratio	4000:1	3000:1	3000:1
	Response Time (ms, GTG)	8	8	8
	Viewing Angle (H°/V°)	178°/178°	178°/178°	178°/178°
	Life Time	50,000Hrs	50,000Hr	50,000Hrs
<b>Touch Screen</b>	Housing	Black powder coated Metal	-	Black powder coated Metal
	Resolution	10624 x 6016	-	10624 x 6016
	Response Time (ms)	Touch : 21, Drawing : 33	-	Touch : 21, Drawing : 33
	Glass Transparency	93%,	-	93%
	Glass Thickness	5mm with anti-vandal	-	5mm with anti-vandal
	Available object size for Touch	Touch : 6, Stylus : 7	-	Touch : Φ6, Stylus : Φ7
	Interface	USB 2.0	-	USB 2.0
	Weight (kg)	8.5	-	8.5
	Touch Intensity	Over 60,000,000	-	Over 60,000,000
	Detection Method	Infrared Rays	-	Infrared Rays
<b>Optical Bonding</b>	Light Transmittance			
	Light Reflectance			
<b>Connectivity : Input</b>	VGA (15pin D-Sub)	1	1	1
	HDMI	1	1	1
	Composite (BNC)	1	1	1
	Component (BNC)	1	-	-
	PC Audio	1	1	1
	Component Audio	1	1	1
	Composite Audio	1	1	1
	RS232C	1	1	1
<b>Connectivity : Output</b>	VGA (15pin D-Sub)	1	1	1
	HDMI (HDCP Not Supported)	1	1	1
	Composite (BNC)	1	1	1
	Component (BNC)	1	1	1
	RS-232C	1	1	1
	Speaker (Ready)	1	1	1
<b>Multi-Screen (Loop)</b>		HDMI, VGA (15pin D-Sub)	HDMI, VGA (15pin D-Sub)	HDMI, VGA (15pin D-Sub)
		Component (BNC), Composite (BNC)	Component (BNC), Composite (BNC)	Component (BNC), Composite (BNC)
<b>Power</b>	Input Voltage	100 - 240VAC	100 - 240VAC	100 - 240VAC
	Consumption (typ) (W)	200	200	200
<b>Auto Cooling System</b>		Yes (1EA)	Yes (1EA)	Yes (1EA)
<b>Auto Power Control</b>	DPMS	Yes	Yes	Yes
<b>Feature Option</b>	AR	Option	Option	Option
	Tempered Glass	Yes	Option	Yes
	Optical	No	Option	No
	Touch Screen			
	Transflective	Option	Option	Option
	Auto Brightness Control	Option	Option	Option
<b>Dimension</b>	Set (W x H x L) mm/in.	987.4 x 576.4 x 129.6 / 38.87 x 22.69 x 5.1	915 x 527.5 x 123.6 / 36.02 x 20.77 x 4.87	987.4 x 576.4 x 136 / 38.87 x 22.69 x 5.35
	Bezel Size (U, D, L, R) mm/in.	37.2, 37.2, 50.2, 50.2 / 1.46, 1.46, 1.98, 1.98	13.3, 13.3, 13.3, 13.3 / 0.52, 0.52, 0.52, 0.52	37.2, 37.2, 50.2, 50.2 / 1.46, 1.46, 1.98, 1.98
	Packed (W x H x D) mm/in.	1098 x 692 x 251 / 43.23 x 27.24 x 9.88	1038 x 656 x 251 / 40.87 x 25.83 x 9.88	1102 x 693 x 250 / 43.39 x 27.28 x 9.84
<b>Dimension : With Tempered Glass</b>	Set (W x H x L) mm/in.	987.4 x 576.4 x 129.6 / 38.87 x 22.69 x 5.1	916 x 528.5 x 128.6 / 36.06 x 20.81 x 5.06	987.4 x 576.4 x 136 / 38.87 x 22.69 x 5.35
	Bezel Size (U, D, L, R) mm/in.	37.2, 37.2, 50.2, 50.2 / 1.46, 1.46, 1.98, 1.98	13.3, 13.3, 13.3, 13.3 / 0.52, 0.52, 0.52, 0.52	37.2, 37.2, 50.2, 50.2 / 1.46, 1.46, 1.98, 1.98
	Packed (W x H x D) mm/in.	1098 x 692 x 251 / 43.23 x 27.24 x 9.88	1038 x 656 x 251 / 40.87 x 25.83 x 9.88	1102 x 693 x 250 / 43.39 x 27.28 x 9.84
<b>Weight : Without Glass</b>	Set Weight (kg/lbs.)	39.5 / 87.08	28 / 61.73	36.5 / 80.47
	Packed Weight (kg/lbs.)	44 / 97	32.5 / 71.65	41 / 90.39
<b>Wall Mounting Hole</b>	(W x H mm)	400 x 200	400 x 200	400 x 200
<b>Operation</b>	OSD Language	10 Lang	10 Lang	10 Lang
	Temperature (°C)	0 - 40	0 - 40	0 - 40
	Humidity (%)	20 - 80	20 - 80	20 - 80
<b>Accessories</b>		Power Cord, HDMI Cable	Power Cord, HDMI Cable	Power Cord, HDMI Cable
	Option	DVI to HDMI, D-SUB, RS-232C, Audio Cable	DVI to HDMI, D-SUB, RS-232C, Audio Cable	DVI to HDMI, D-SUB, RS-232C, Audio Cable

# APPLIED DIGITAL SIGNAGE

Model Name		D425ML	D425MLI	D460ML
<b>Panel</b>	Screen Size	42"	42"	46"
	Resolution	1920 x 1080 (WUXGA)	1920 x 1080 (WUXGA)	1366 x 768 (WXGA)
	Aspect Ratio	16 : 9	16 : 9	16 : 9
	Display Colors	16.7M	16.7M	16.7M
	Brightness(typ)	500	500	1500
	Contrast Ratio	800 : 1	800 : 1	3000:1
	Response Time (ms, GTG)	9	9	
	Viewing Angle (H°/V°)	178°/178°	178°/178°	178°/178°
	Life Time	50,000Hrs	50,000Hr	50,000Hrs
<b>Touch Screen</b>	Housing	-	Black powder coated Metal	-
	Resolution	-	10432 x 5824	
	Response Time (ms)	-	Touch : 8, Drawing : 13	
	Glass Transparency	-	93%	
	Glass Thickness	-	5mm with anti-vandal	
	Available object size for Touch	-	Touch : 7, Stylus : 8	
	Interface	-	USB 2.0	
	Weight (kg)	-	12	
	Touch Intensity	-	Over 60,000,000	
Detection Method	-	Infrared Rays		
<b>Optical Bonding</b>	Light Transmittance			
	Light Reflectance			
<b>Connectivity : Input</b>	VGA (15pin D-Sub)	1	1	1
	HDMI	1	1	1
	Composite (BNC)	1	1	1
	Component (BNC)	-	1	1
	PC Audio	1	1	1
	Component Audio	1	1	1
	Composite Audio	1	1	1
	RS232C	1	1	1
<b>Connectivity : Output</b>	VGA (15pin D-Sub)	1	1	1
	HDMI (HDCP Not Supported)	1	1	1
	Composite (BNC)	1	1	1
	Component (BNC)	1	1	1
	RS-232C	1	1	1
	Speaker (Ready)	1	1	1
<b>Multi-Screen (Loop)</b>		HDMI, VGA (15pin D-Sub)	HDMI, VGA (15pin D-Sub)	HDMI, VGA (15pin D-Sub)
		Component (BNC), Composite (BNC)	Component (BNC), Composite (BNC)	Component (BNC), Composite (BNC)
<b>Power</b>	Input Voltage	100 - 240VAC	100 - 240VAC	100 - 240VAC
	Consumption (typ) (W)	220	220	320
<b>Auto Cooling System</b>		Yes (1EA)	Yes (1EA)	Yes (1EA)
<b>Auto Power Control</b>	DPMS	Yes	Yes	Yes
<b>Feature Option</b>	AR	Option	Option	Option
	Tempered Glass	Option	Yes	Yes
	Optical	Option	No	No
	Touch Screen			
	Transflective	Option	Option	Option
	Auto Brightness Control	Option	Option	Option
<b>Dimension</b>	Set (W x H x L) mm/in.	987.4 x 580.4 x 120.4 / 38.87 x 22.85 x 4.74	1026.4 x 633 x 134.7 / 40.41 x 24.92 x 5.3	
	Bezel Size (U, D, L, R) mm/in.	27.2, 27.2, 27.2, 27.2 / 1.07, 1.07, 1.07, 1.07	53, 53, 46, 46 / 2.09, 2.09, 1.81, 1.81	
	Packed (W x H x D) mm/in.	1122 x 732 x 260 / 44.17 x 28.82 x 10.24	1148 x 770 x 256 / 45.2 x 30.31 x 10.08	
<b>Dimension : With Tempered Glass</b>	Set (W x H x L) mm/in.	987.4 x 580.4 x 125.4 / 38.87 x 22.85 x 4.94	1026.4 x 633 x 134.7 / 40.41 x 24.92 x 5.3	
	Bezel Size (U, D, L, R) mm/in.	27.2, 27.2, 27.2, 27.2 / 1.07, 1.07, 1.07, 1.07	53, 53, 46, 46 / 2.09, 2.09, 1.81, 1.81	
	Packed (W x H x D) mm/in.	1122 x 732 x 260 / 44.17 x 28.82 x 10.24	1148 x 770 x 256 / 45.2 x 30.31 x 10.08	
<b>Weight : Without Glass</b>	Set Weight (kg/lbs.)	32 / 70.55	42 / 92.59	
	Packed Weight (kg/lbs.)	36.5 / 190.7	46.5 / 102.51	
<b>Wall Mounting Hole</b>	(W x H mm)	600 x 200	400 x 200	400 x 200
<b>Operation</b>	OSD Language	10 Lang	10 Lang	10 Lang
	Temperature (°C)	0 - 40	0 - 40	0 - 40
	Humidity (%)	20 - 80	20 - 80	20 - 80
<b>Accessories</b>		Power Cord, HDMI Cable	Power Cord, HDMI Cable	Power Cord, HDMI Cable
	Option	DVI to HDMI, D-SUB, RS-232C, Audio Cable	DVI to HDMI, D-SUB, RS-232C, Audio Cable	DVI to HDMI, D-SUB, RS-232C, Audio Cable

# APPLIED DIGITAL SIGNAGE

Model Name		D465ML	D465MLI	D467ML
<b>Panel</b>	Screen Size	46"	46"	46"
	Resolution	1920 x 1080 (WUXGA)	1920 x 1080 (WUXGA)	1920 x 1080 (WUXGA)
	Aspect Ratio	16 : 9	16 : 9	16 : 9
	Display Colors	16.7M	16.7M	16.7M
	Brightness(typ)	450	450	700
	Contrast Ratio	4000:1	4000:1	4000:1
	Response Time (ms, GTG)	8	8	8
	Viewing Angle (H°/V°)	178°/178°	178°/178°	178°/178°
	Life Time	50,000Hrs	50,000Hrs	50,000Hr
<b>Touch Screen</b>	Housing		Black powder coated Metal	-
	Resolution	-	11456 x 6400	-
	Response Time (ms)	-	Touch : 10, Drawing : 15.2	-
	Glass Transparency	-	93%,	-
	Glass Thickness	-	5mm with anti-vandal	-
	Available object size for Touch	-	Touch : 6, Stylus : 7	-
	Interface	-	USB 2.0	-
	Weight (kg)	-	12	-
	Touch Intensity	-	Over 60,000,000	-
Detection Method	-	Infrared Rays	-	
<b>Optical Bonding</b>	Light Transmittance			
	Light Reflectance			
<b>Connectivity : Input</b>	VGA (15pin D-Sub)	1	1	1
	HDMI	1	1	1
	Composite (BNC)	1	1	1
	Component (BNC)	1	1	1
	PC Audio	1	1	1
	Component Audio	1	1	1
	Composite Audio	1	1	1
	RS232C	1	1	1
<b>Connectivity : Output</b>	VGA (15pin D-Sub)	1	1	1
	HDMI (HDCP Not Supported)	1	1	1
	Composite (BNC)	1	1	1
	Component (BNC)	1	1	1
	RS-232C	1	1	1
	Speaker (Ready)	1	1	1
<b>Multi-Screen (Loop)</b>		HDMI, VGA (15pin D-Sub)	HDMI, VGA (15pin D-Sub)	HDMI, VGA (15pin D-Sub)
		Component (BNC), Composite (BNC)	Component (BNC), Composite (BNC)	Component (BNC), Composite (BNC)
<b>Power</b>	Input Voltage	100 - 240VAC	100 - 240VAC	100 - 240VAC
	Consumption (typ) (W)	260	260	260
<b>Auto Cooling System</b>		Yes (1EA)	Yes (1EA)	Yes (1EA)
<b>Auto Power Control</b>	DPMS	Yes	Yes	Yes
<b>Feature Option</b>	AR	Option	Option	Option
	Tempered Glass	Option	Yes	Option
	Optical	Option	No	Option
	Touch Screen			
	Transflective	Option	Option	Option
	Auto Brightness Control	Option	Option	Option
<b>Dimension</b>	Set (W x H x L) mm/in.	1086.4 x 630.4 x 115 / 42.77 x 24.82 x 4.53	1122.4 x 656.4 x 129.7 / 44.19 x 25.84 x 5.11	1051.2 x 604.4 x 129.3 / 41.39 x 23.8 x 5.09
	Bezel Size (U, D, L, R) mm/in.	26.9, 26.9, 32, 32 / 1.06, 1.06, 1.26, 1.26	40.2, 40.2, 50.2, 50.2 / 1.58, 1.58, 1.98, 1.98	14.4, 14.4, 14.9, 14.9 / 0.57, 0.57, 0.57, 0.57
	Packed (W x H x D) mm/in.	1200 x 747 x 228 / 47.24 x 29.41 x 8.98	1236 x 773 x 240 / 48.66 x 30.43 x 9.45	1187 x 756 x 261 / 46.73 x 29.76 x 10.28
<b>Dimension : With Tempered Glass</b>	Set (W x H x L) mm/in.	1086.4 x 630.4 x 121 / 42.77 x 24.82 x 4.76	1123.4 x 657.4 x 131.5 / 44.23 x 25.88 x 5.18	1051.2 x 604.4 x 132.8 / 41.39 x 23.8 x 5.23
	Bezel Size (U, D, L, R) mm/in.	26.9, 26.9, 32, 32 x 1.06, 1.06, 1.26, 1.26	41, 41, 51.3, 51.3 / 1.6, 1.6, 2.02, 2.02	14.4, 14.4, 14.9, 14.9 / 0.57, 0.57, 0.59, 0.59
	Packed (W x H x D) mm/in.	1200 x 747 x 228 / 47.24 x 29.41 x 8.98	1236 x 773 x 240 / 48.66 x 30.43 x 9.45	1187 x 756 x 261 / 46.73 x 29.76 x 10.28
<b>Weight : Without Glass</b>	Set Weight (kg/lbs.)	38.5 / 84.88	50.5 / 111.33	33.5 / 73.85
	Packed Weight (kg/lbs.)	43.5 / 95.9	55.5 / 122.36	38.5 / 84.88
<b>Wall Mounting Hole</b>	(W x H mm)	600 x 200	600 x 200	600 x 200
<b>Operation</b>	OSD Language	10 Lang	10 Lang	10 Lang
	Temperature (°C)	0 - 40	0 - 40	0 - 40
	Humidity (%)	20 - 80	20 - 80	20 - 80
<b>Accessories</b>		Power Cord, HDMI Cable	Power Cord, HDMI Cable	Power Cord, HDMI Cable
	Option	DVI to HDMI, D-SUB, RS-232C, Audio Cable	DVI to HDMI, D-SUB, RS-232C, Audio Cable	DVI to HDMI, D-SUB, RS-232C, Audio Cable

# APPLIED DIGITAL SIGNAGE

Model Name		D467MLI	D462FL	D468FL
<b>Panel</b>	Screen Size	46"	46"	46"
	Resolution	1920 x 1080 (WUXGA)	1366 x 768 (WXGA)	1366 x 768 (WXGA)
	Aspect Ratio	16 : 9	16 : 9	16 : 9
	Display Colors	16.7M	16.7M	16.7M
	Brightness(typ)	700	500 / Silver	700 / Black
	Contrast Ratio	4000:1	3000:1	3000:1
	Response Time (ms, GTG)	8	8	8
	Viewing Angle (H°/V°)	178°/178°	178°/178°	178°/178°
	Life Time	50,000Hrs	50,000Hrs	50,000Hrs
<b>Touch Screen</b>	Housing	Black powder coated Metal	-	-
	Resolution	11456 x 6400	-	-
	Response Time (ms)	Touch : 10, Drawing : 15.2	-	-
	Glass Transparency	93%	-	-
	Glass Thickness	5mm with anti-vandal	-	-
	Available object size for Touch	Touch : 6, Stylus : 7	-	-
	Interface	USB 2.0	-	-
	Weight (kg)	12	-	-
	Touch Intensity	Over 60,000,000	-	-
Detection Method	Infrared Rays	-	-	
<b>Optical Bonding</b>	Light Transmittance			
	Light Reflectance			
<b>Connectivity : Input</b>	VGA (15pin D-Sub)	1	1	1
	HDMI	1	1	1
	Composite (BNC)	1	1	1
	Component (BNC)	1	1	1
	PC Audio	1	1	1
	Component Audio	1	1	1
	Composite Audio	1	1	1
	RS232C	1	1	1
<b>Connectivity : Output</b>	VGA (15pin D-Sub)	1	1	1
	HDMI (HDCP Not Supported)	1	1	1
	Composite (BNC)	1	1	1
	Component (BNC)	1	1	1
	RS-232C	1	1	1
	Speaker (Ready)	1	1	1
<b>Multi-Screen (Loop)</b>		HDMI, VGA (15pin D-Sub)	HDMI, VGA (15pin D-Sub)	HDMI, VGA (15pin D-Sub)
		Component (BNC), Composite (BNC)	Component (BNC), Composite (BNC)	Component (BNC), Composite (BNC)
<b>Power</b>	Input Voltage	100 - 240VAC	100 - 240VAC	100 - 240VAC
	Consumption (typ) (W)	260	260	260
<b>Auto Cooling System</b>		Yes (1EA)	Yes (1EA)	Yes (1EA)
<b>Auto Power Control</b>	DPMS	Yes	Yes	Yes
<b>Feature Option</b>	AR	Option	No	No
	Tempered Glass	Yes	No	No
	Optical	No	No	No
	Touch Screen			
	Transflective	Option	Option	Option
	Auto Brightness Control	Option	Option	Option
<b>Dimension</b>	Set (W x H x L) mm/in.	1128.8 x 656.8 x 143.3 / 44.44 x 25.86 x 5.64	1025.6 x 579.8 x 108.2 / 40.38 x 22.83 x 4.26	1025.6 x 579.8 x 108.2 / 40.38 x 22.83 x 4.26
	Bezel Size (U, D, L, R) mm/in.	40.6, 40.6, 53.7, 53.7 / 1.6, 1.6, 2.11, 2.11		
	Packed (W x H x D) mm/in.	1244 x 711 x 254 / 48.98 x 27.99 x 10	1240 x 796 x 322 / 48.82 x 31.34 x 12.68	1240 x 796 x 322 / 48.82 x 31.34 x 12.68
<b>Dimension : With Tempered Glass</b>	Set (W x H x L) mm/in.	1128.8 x 656.8 x 143.3 / 44.44 x 25.86 x 5.64	NA	NA
	Bezel Size (U, D, L, R) mm/in.	40.6, 40.6, 53.7, 53.7 / 1.6, 1.6, 2.11, 2.11	NA	NA
	Packed (W x H x D) mm/in.	1244 x 711 x 254 / 48.98 x 27.99 x 10	NA	NA
<b>Weight : Without Glass</b>	Set Weight (kg/lbs.)	45.5 / 100.31	26 / 57.32	26 / 57.32
	Packed Weight (kg/lbs.)	50.5 / 111.33	30.5 / 67.24	30.5 / 67.24
<b>Wall Mounting Hole</b>	(W x H mm)	600 x 200	600 x 200	600 x 200
<b>Operation</b>	OSD Language	10 Lang	10 Lang	10 Lang
	Temperature (°C)	0 - 40	0 - 40	0 - 40
	Humidity (%)	20 - 80	20 - 80	20 - 80
<b>Accessories</b>		Power Cord, HDMI Cable	Power Cord, HDMI Cable	Power Cord, HDMI Cable
	Option	DVI to HDMI, D-SUB, RS-232C, Audio Cable	DVI to HDMI, D-SUB, RS-232C, Audio Cable	DVI to HDMI, D-SUB, RS-232C, Audio Cable

# APPLIED DIGITAL SIGNAGE

Model Name		D525ML	D525MLI	D705ML
<b>Panel</b>	Screen Size	52"	52"	70"
	Resolution	1920 x 1080 (WUXGA)	1920 x 1080 (WUXGA)	1920 x 1080 (WUXGA)
	Aspect Ratio	16 : 9	16 : 9	16 : 9
	Display Colors	16.7M	16.7M	16.7M
	Brightness(typ)	600	600	600
	Contrast Ratio	1700:1	1700:1	2000:1
	Response Time (ms, GTG)	8	8	8
	Viewing Angle (H°/V°)	178°/178°	178°/178°	178°/178°
	Life Time	50,000Hr	50,000Hrs	50,000Hrs
<b>Touch Screen</b>	Housing	-	Black powder coated Metal	-
	Resolution	-	12928 x 7296	-
	Response Time (ms)	-	Touch : 14, Drawing : 21	-
	Glass Transparency	-	93 %	-
	Glass Thickness	-	5mm with anti-vandal	-
	Available object size for Touch	-	Touch : Φ7, Stylus : Φ8	-
	Interface	-	USB 2.0	-
	Weight (kg)	-	14	-
	Touch Intensity	-	Over 60,000,000	-
Detection Method	-	Infrared Rays	-	
<b>Optical Bonding</b>	Light Transmittance	98 %	NA	98 %
	Light Reflectance	0.2 %	NA	0.2 %
<b>Connectivity : Input</b>	VGA (15pin D-Sub)	1	1	1
	HDMI	1	1	1
	Composite (BNC)	1	1	1
	Component (BNC)	1	1	1
	PC Audio	1	1	1
	Component Audio	1	1	1
	Composite Audio	1	1	1
	RS232C	1	1	1
<b>Connectivity : Output</b>	VGA (15pin D-Sub)	1	1	1
	HDMI (HDCP Not Supported)	1	1	1
	Composite (BNC)	1	1	1
	Component (BNC)	1	1	1
	RS-232C	1	1	1
	Speaker (Ready)	1	1	1
<b>Multi-Screen (Loop)</b>		HDMI, VGA (15pin D-Sub)	HDMI, VGA (15pin D-Sub)	HDMI, VGA (15pin D-Sub)
		Component (BNC), Composite (BNC)	Component (BNC), Composite (BNC)	Component (BNC), Composite (BNC)
<b>Power</b>	Input Voltage	100 - 240VAC	100 - 240VAC	100 - 240VAC
	Consumption (typ) (W)	320	320	900
<b>Auto Cooling System</b>		Yes (2EA)	Yes (2EA)	Yes (3EA)
<b>Auto Power Control</b>	DPMS	Yes	Yes	Yes
<b>Feature Option</b>	AR	Option	Option	Option
	Tempered Glass	Option	Yes	Option
	Optical	Option	Yes	Option
	Touch Screen	Option	No	Option
	Transflective	TBD	TBD	TBD
	Auto Brightness Control	Option	Option	Option
<b>Dimension</b>	Set (W x H x L) mm/in.	1195.4 x 691.4 x 127.5 / 4.7 x 27.2 x 5.0	1259.4 x 745.4 x 142 / 49.58 x 29.35 x 5.59	1683.4 x 1005.4 x 153.4 / 66.28 x 39.58 x 6.04
	Bezel Size (U, D, L, R) mm/in.	20, 20, 20, 20 / 0.79, 0.79, 0.79, 0.79	44.7, 44.7, 49.7, 49.7 / 1.76, 1.76, 1.95, 1.95	63, 63, 63, 63 / 2.5, 2.5, 2.5, 2.5
	Packed (W x H x D) mm/in.	1424 x 890 x 295 / 56.06 x 35.04 x 11.61	1424 x 890 x 295 / 56.06 x 35.04 x 11.61	1810 x 1134 x 272 / 71.26 x 44.65 x 10.71
<b>Dimension : With Tempered Glass</b>	Set (W x H x L) mm/in.	1195.4 x 691.4 x 133.5 / 47.06 x 27.22 x 5.26	1259.4 x 745.4 x 142.6 / 49.58 x 29.35 x 5.61	1683.4 x 1005.4 x 158.4 / 66.28 x 39.58 x 6.24
	Bezel Size (U, D, L, R) mm/in.	20, 20, 20, 20 / 0.79, 0.79, 0.79, 0.79	46.7, 46.7, 51.7, 51.7 / 1.84, 1.84, 2.04, 2.04	63, 63, 63, 63 / 2.5, 2.5, 2.5, 2.5
	Packed (W x H x D) mm/in.	1424 x 890 x 295 / 47.06 x 27.22 x 5.26	1424 x 890 x 295 / 56.06 x 35.04 x 11.61	1810 x 1134 x 272 / 71.26 x 44.65 x 10.71
<b>Weight : Without Glass</b>	Set Weight (kg/lbs.)	46.2 / 101.85	60.2 / 132.72	95 / 209.44
	Packed Weight (kg/lbs.)	53.9 / 118.83	67.9 / 149.69	120 / 264.55
<b>Wall Mounting Hole</b>	(W x H mm)	600 x 200	600 x 200	600 x 400 And 600 x 400
<b>Operation</b>	OSD Language	10 Lang	10 Lang	10 Lang
	Temperature (°C)	0 - 40	0 - 40	0 - 40
	Humidity (%)	20 - 80	20 - 80	20 - 80
<b>Accessories</b>		Power Cord, HDMI Cable	Power Cord, HDMI Cable	Power Cord, HDMI Cable
	Option	DVI to HDMI, D-SUB, RS-232C, Audio Cable	DVI to HDMI, D-SUB, RS-232C, Audio Cable	DVI to HDMI, D-SUB, RS-232C, Audio Cable



# APPLIED DIGITAL SIGNAGE

Model Name		D705MLI	D825ML	D825MLI
<b>Panel</b>	Screen Size	70"	82"	82"
	Resolution	1920 x 1080 (WUXGA)	1920 x 1080 (WUXGA)	1920 x 1080 (WUXGA)
	Aspect Ratio	16 : 9	16 : 9	16 : 9
	Display Colors	16.7M	16.7M	16.7M
	Brightness(typ)	600	600	600
	Contrast Ratio	2000:1	1200:1	1200:1
	Response Time (ms, GTG)	8	8	8
	Viewing Angle (H°/V°)	178°/178°	178°/178°	178°/178°
	Life Time	50,000Hrs	50,000Hrs	50,000Hrs
<b>Touch Screen</b>	Housing	Black powder coated Metal	-	Black powder coated Metal
	Resolution	16384 x 9856	-	16384 x 13952
	Response Time (ms)	Touch : 11, Drawing : 16	-	Touch : 12, Drawing : 21
	Glass Transparency	93 %	-	93 %
	Glass Thickness	5mm with anti-vandal	-	5mm with anti-vandal
	Available object size for Touch	Touch : 7, Stylus : 8	-	Touch : Ø8, Stylus : Ø9
	Interface	USB 2.0	-	USB 2.0
	Weight (kg)	32 (Glass 21/ touch 11)	-	18 (TBD Glass )
	Touch Intensity	Over 60,000,000	-	Over 60,000,000
Detection Method	Infrared Rays	-	Infrared Rays	
<b>Optical Bonding</b>	Light Transmittance			
	Light Reflectance			
<b>Connectivity : Input</b>	VGA (15pin D-Sub)	1	1	1
	HDMI	1	1	1
	Composite (BNC)	1	1	1
	Component (BNC)	1	1	1
	PC Audio	1	1	1
	Component Audio	1	1	1
	Composite Audio	1	1	1
	RS232C	1	1	1
<b>Connectivity : Output</b>	VGA (15pin D-Sub)	1	1	1
	HDMI (HDCP Not Supported)	1	1	1
	Composite (BNC)	1	1	1
	Component (BNC)	1	1	1
	RS-232C	1	1	1
	Speaker (Ready)	1	1	1
<b>Multi-Screen (Loop)</b>		HDMI, VGA (15pin D-Sub)	HDMI, VGA (15pin D-Sub)	HDMI, VGA (15pin D-Sub)
		Component (BNC), Composite (BNC)	Component (BNC), Composite (BNC)	Component (BNC), Composite (BNC)
<b>Power</b>	Input Voltage	100 - 240VAC	100 - 240VAC	100 - 240VAC
	Consumption (typ) (W)	900	1000	1000
<b>Auto Cooling System</b>		Yes (3EA)	Yes (3EA)	
<b>Auto Power Control</b>	DPMS	Yes	Yes	Yes
<b>Feature Option</b>	AR	Option	Option	Option
	Tempered Glass	Yes	Option	Yes
	Optical	No	Option	No
	Touch Screen			
	Transflective	No	No	No
	Auto Brightness Control	Option	Option	Option
<b>Dimension</b>	Set (W x H x L) mm/in.	TBD	1919.8 x 1088.0 x 158.3 / 75.58 x 42.83 x 6.2	TBD
	Bezel Size (U, D, L, R) mm/in.	TBD	34.1, 34.1, 36.6, 36.6 / 1.34, 1.34, 1.44, 1.44	TBD
	Packed (W x H x D) mm/in.	TBD	2115 x 1320 x 397 / 83.27 x 51.97 x 15.63	TBD
<b>Dimension : With Tempered Glass</b>	Set (W x H x L) mm/in.	TBD	1883 x 1088.0 x 165.5 / 74.13 x 42.83 x 6.52	TBD
	Bezel Size (U, D, L, R) mm/in.	TBD	34.1, 34.1, 55.0, 55.0 / 1.34, 1.34, 2.17, 2.17	TBD
	Packed (W x H x D) mm/in.	TBD	2115 x 1320 x 397 / 83.27 x 51.97 x 15.63	TBD
<b>Weight : Without Glass</b>	Set Weight (kg/lbs.)	TBD	135 / 297.62	TBD
	Packed Weight (kg/lbs.)	TBD	160 / 352.74	TBD
<b>Wall Mounting Hole</b>	(W x H mm)	600 x 400	600.0 x 600.0	600.0 x 600.0
<b>Operation</b>	OSD Language	10 Lang	10 Lang	10 Lang
	Temperature (°C)	0 - 40	0 - 40	0 - 40
	Humidity (%)	20 - 80	20 - 80	20 - 80
<b>Accessories</b>		Power Cord, HDMI Cable	Power Cord, HDMI Cable	Power Cord, HDMI Cable
	Option	DVI to HDMI, D-SUB, RS-232C, Audio Cable	DVI to HDMI, D-SUB, RS-232C, Audio Cable	DVI to HDMI, D-SUB, RS-232C, Audio Cable

# OUTDOOR DIGITAL SIGNAGE

Model Name		H460SC	H460SCI	H460SL
<b>Panel</b>	Screen Size	46"	46"	46"
	Resolution	1366 x 768 (WXGA)	1366 x 768 (WXGA)	1366 x 768 (WXGA)
	Aspect Ratio	16 : 9	16 : 9	16 : 9
	Display Colors	16.7M	16.7M	16.7M
	Brightness(typ)	1500	1500	2500
	Contrast Ratio	3000:1	3000:1	4000:1
	Response Time (ms, GTG)	8	8	8
	Viewing Angle (H°/V°)	178°/178°	178°/178°	178°/178°
	Life Time	50,000Hr	50,000Hr	30,000Hr
	Backlight type	CCFL	CCFL	LED
<b>Touch Screen</b>	Resolution	-	-	-
	Response Time (ms)	-	50 ~ 100	-
	Glass Transparency	-	-	-
	Glass Thickness	-	-	-
	Available object size for Touch	-	-	-
	Interface	-	USB 2.0	-
	Weight (kg)	-	0.1	-
	Touch Intensity	-	Permanent (protected by glass)	-
	Detection Method	-	Capacitance	-
<b>Optical Bonding</b>	Light Transmittance			
	Light Reflectance			
<b>Connectivity : Input</b>	VGA (15pin D-Sub)	1	1	1
	HDMI	1	1	1
	Composite (BNC)			
	Component (BNC)			
	PC Audio			
	Component Audio			
	Composite Audio			
	RS232C	1	1	1
<b>Environmental Conditions</b>	Max Temperature operational (°C)	50	50	50
	Min Temperature operational (°C)	- 40	- 40	- 40
	Max Temperature storage (°C)	60	60	60
	Min Temperature storage (°C)	- 40	- 40	- 40
	Humidity (non-condensing) (%)	20 - 80	20 - 80	20 - 80
	International Protection	IP55 - IP65	IP55 - IP65	IP55 - IP65
<b>Power</b>	Input Voltage	220 - 240 VAC, 100 - 1200 VAC (Option)	220 - 240 VAC, 100 - 1200 VAC (Option)	220 - 240 VAC, 100 - 1200 VAC (Option)
	Consumption (typ) (W)	450	450	500
	Consumption per nits (Max, W)	0.3	0.3	0.2
	Heater Block (with PC Case)	1.2 KW / Peak 2.5 KW	1.2 KW / Peak 2.5 KW	1.2 KW / Peak 2.5 KW
<b>Feature</b>	Auto Cooling System	Yes	Yes	Yes
	Auto Brightness Control	Yes	Yes	Yes
	AR			
	Tempered Glass			
	Optical			
	Touch Screen			
	Transflective			
	Auto Heating System	Yes	Yes	-
	Anti-Vandal Glass	Yes	Yes	Yes
	Anti-graffiti	Option	Option	Option
	Surface treatment	Powder coated	Powder coated	Powder coated
<b>Dimension : with Tempered Glass</b>	Set (W x H x L) mm/in.	770 x 1950 x 250 / 30.31 x 76.77 x 9.84	770 x 1950 x 250 / 30.31 x 76.77 x 9.84	770 x 1950 x 250 / 30.31 x 76.77 x 9.84
	Glass Thickness (mm/in.)	11.5 / 0.45	11.5 / 0.45	11.5 / 0.45
	Packed (W x H x D) mm/in.			
<b>Weight</b>	Set Weight (kg/lbs.)	135 / 297.62	135 / 297.62	135 / 297.62
	Packed Weight (kg/lbs.)			
<b>Mounting</b>	Bottom mounting	M12 wedge anchor (6 pcs)	M12 wedge anchor (6 pcs)	M12 wedge anchor (6 pcs)
<b>Operation</b>	OSD Language	10 Lang	10 Lang	10 Lang
	Computer	Option	Option	Option
<b>Accessories</b>		Power Cord, HDMI Cable	Power Cord, HDMI Cable	Power Cord, HDMI Cable
	Option			

# OUTDOOR DIGITAL SIGNAGE

Model Name		H460SLI	H460ST	H460STI
<b>Panel</b>	Screen Size	46"	46"	46"
	Resolution	1366 x 768 (WXGA)	1366 x 768 (WXGA)	1366 x 768 (WXGA)
	Aspect Ratio	16 : 9	16 : 9	16 : 9
	Display Colors	16.7M	16.7M	16.7M
	Brightness(typ)	2500	2400 (3000 at 80K lux)	2400 (3000 at 80K lux)
	Contrast Ratio	4000:1	2900:1	2900:1
	Response Time (ms, GTG)	8	8	8
	Viewing Angle (H°/V°)	178°/178°	178°/178°	178°/178°
	Life Time	30,000Hr	50,000Hr	50,000Hr
	Backlight type	LED	CCFL	CCFL
<b>Touch Screen</b>	Resolution	-	-	-
	Response Time (ms)	50 ~ 100	-	50 ~ 100
	Glass Transparency	-	-	-
	Glass Thickness	-	-	-
	Available object size for Touch	-	-	-
	Interface	USB 2.0	-	USB 2.0
	Weight (kg)	0.11	-	0.11
	Touch Intensity	Permanent (protected by glass)	-	Permanent (protected by glass)
	Detection Method	Capacitance	-	Capacitance
<b>Optical Bonding</b>	Light Transmittance			
	Light Reflectance			
<b>Connectivity : Input</b>	VGA (15pin D-Sub)	1	1	1
	HDMI	1	1	1
	Composite (BNC)			
	Component (BNC)			
	PC Audio			
	Component Audio			
	Composite Audio			
	RS232C	1	1	1
<b>Environmental Conditions</b>	Max Temperature operational (°C)	50	50	50
	Min Temperature operational (°C)	- 40	- 40	- 40
	Max Temperature storage (°C)	60	60	60
	Min Temperature storage (°C)	- 40	- 40	- 40
	Humidity (non-condensing) (%)	20 - 80	20 - 80	20 - 80
	International Protection	IP55 - IP65	IP55 - IP65	IP55 - IP65
<b>Power</b>	Input Voltage	220 - 240 VAC, 100 - 1200 VAC (Option)	220 - 240 VAC, 100 - 120 VAC (Option)	220 - 240 VAC, 100 - 120 VAC (Option)
	Consumption (typ) (W)	500	450	450
	Consumption per nits (Max, W)	0.2	0.187	0.187
	Heater Block (with PC Case)	1.2 KW / Peak 2.5 KW	1.2 KW / Peak 2.5 KW	1.2 KW / Peak 2.5 KW
<b>Feature</b>	Auto Cooling System	Yes	Yes	Yes
	Auto Brightness Control	Yes	Yes	Yes
	AR		Yes	Yes
	Tempered Glass		Yes	Yes
	Optical			
	Touch Screen			
	Transflective			
	Auto Heating System	Yes	Yes	Yes
	Anti-Vandal Glass	Yes	Yes	Yes
	Anti-graffiti	Option	Option	Option
Surface treatment	Powder coated	Powder coated	Powder coated	
<b>Dimension : with Tempered Glass</b>	Set (W x H x L) mm/in.	770 x 1950 x 250 / 30.31 x 76.77 x 9.84	770 x 1950 x 250 / 30.31 x 76.77 x 9.84	770 x 1950 x 250 / 30.31 x 76.77 x 9.84
	Glass Thickness (mm/in.)	11.5 / 0.45	11.5 / 0.45	11.5 / 0.45
	Packed (W x H x D) mm/in.			
<b>Weight</b>	Set Weight (kg/lbs.)	135 / 297.62	135 / 297.62	135 / 297.62
	Packed Weight (kg/lbs.)			
<b>Mounting</b>	Bottom mounting	M12 wedge anchor (6 pcs)	M12 wedge anchor (6 pcs)	M12 wedge anchor (6 pcs)
<b>Operation</b>	OSD Language	10 Lang	10 Lang	10 Lang
	Computer	Option	Option	Option
<b>Accessories</b>		Power Cord, HDMI Cable	Power Cord, HDMI Cable	Power Cord, HDMI Cable
	Option			

# OUTDOOR DIGITAL SIGNAGE

Model Name	H705SL	H705SLI	
<b>Panel</b>	Screen Size	70"	70"
	Resolution	1920 x 1080 (WUXGA)	1920 x 1080 (WUXGA)
	Aspect Ratio	16 : 9	16 : 9
	Display Colors	16.7M	16.7M
	Brightness(typ)	2500	2500
	Contrast Ratio	2500:1	2500:1
	Response Time (ms, GTG)	8	8
	Viewing Angle (H°/V°)	178°/178°	178°/178°
	Life Time	50,000Hr	50,000Hr
	Backlight type	LED	LED
<b>Touch Screen</b>	Resolution	-	-
	Response Time (ms)	-	50 - 100
	Glass Transparency	-	-
	Glass Thickness	-	-
	Available object size for Touch	-	-
	Interface	-	USB 2.0
	Weight (kg)	-	0.25
	Touch Intensity	-	Permanent (protected by glass)
	Detection Method	-	Capacitance
<b>Optical Bonding</b>	Light Transmittance		
	Light Reflectance		
<b>Connectivity : Input</b>	VGA (15pin D-Sub)	1	1
	HDMI	1	1
	Composite (BNC)		
	Component (BNC)		
	PC Audio		
	Component Audio		
	Composite Audio		
	RS232C	1	1
<b>Environmental Conditions</b>	Max Temperature operational (°C)	50	50
	Min Temperature operational (°C)	- 40	- 40
	Max Temperature storage (°C)	60	60
	Min Temperature storage (°C)	- 40	- 40
	Humidity (non-condensing) (%)	20 - 80	20 - 80
	International Protection	IP55 - IP65	IP55 - IP65
<b>Power</b>	Input Voltage	220 - 240 VAC, 100 - 120 VAC (Option)	220 - 240 VAC, 100 - 120 VAC (Option)
	Consumption (typ) (W)	TBD	TBD
	Consumption per nits (Max, W)	TBD	TBD
	Heater Block (with PC Case)	2 KW / Peak 4 KW	2 KW / Peak 4 KW
<b>Feature</b>	Auto Cooling System	Yes	Yes
	Auto Brightness Control	Yes	Yes
	AR	Yes	Yes
	Tempered Glass	Yes	Yes
	Optical		
	Touch Screen		
	Transflective		
	Auto Heating System	Yes	Yes
	Anti-Vandal Glass	Yes	Yes
	Anti-graffiti	No	Option
	Surface treatment	Powder coated	Powder coated
<b>Dimension : with Tempered Glass</b>	Set (W x H x L) mm/in.	1051 x 2200 x 305 / 41.38 x 86.61 x 12.01	1051 x 2200 x 305 / 41.38 x 86.61 x 12.01
	Glass Thickness (mm/in.)	11.5 / 0.45	11.5 / 0.45
	Packed (W x H x D) mm/in.		
<b>Weight</b>	Set Weight (kg/lbs.)	TBD	TBD
	Packed Weight (kg/lbs.)		
<b>Mounting</b>	Bottom mounting	M12 wedge anchor (6 pcs)	M12 wedge anchor (6 pcs)
<b>Operation</b>	OSD Language	10 Lang	10 Lang
	Computer	Option	Option
<b>Accessories</b>		Power Cord, HDMI Cable	Power Cord, HDMI Cable
	Option		

# INDOOR DIGITAL SIGNAGE

Model Name		D465SL	D465SLI	D467SL	D467SLI
<b>Panel</b>	Screen Size	46"	46"	46"	46"
	Resolution	1920 x 1080 (WUXGA)	1920 x 1080 (WUXGA)	1920 x 1080 (WUXGA)	1920 x 1080 (WUXGA)
	Aspect Ratio	16 : 9	16 : 9	16 : 9	16 : 9
	Display Colors	16.7M	16.7M	16.7M	16.7M
	Brightness(typ)	450	450	700	700
	Contrast Ratio	4000 : 1	4000 : 1	4000:1	4000:1
	Response Time (ms, GTG)	8	8	8	8
	Viewing Angle (H°/V°)	178°/178°	178°/178°	178°/178°	178°/178°
	Life Time	50,000Hr	50,000Hrs	50,000Hrs	50,000Hrs
<b>Touch Screen</b>	Housing	-	Black powder coated Metal	-	Black powder coated Metal
	Resolution	-	11456 x 6400	-	11456 x 6400
	Response Time (ms)	-	Touch : 10, Drawing : 15.2	-	Touch : 10, Drawing : 15.2
	Glass Transparency	-	93%	-	93%,
	Glass Thickness	-	5mm with anti-vandal	-	5mm with anti-vandal
	Available object size for Touch	-	Touch : Φ6, Stylus : Φ7	-	Touch : Φ6, Stylus : Φ7
	Interface	-	USB 2.0	-	USB 2.0
	Weight (kg)	-	12	-	12
	Touch Intensity	-	Over 60,000,000	-	Over 60,000,000
	Detection Method	-	Infrared Rays	-	Infrared Rays
<b>Optical Bonding</b>	Light Transmittance				
	Light Reflectance				
<b>Connectivity : Input</b>	VGA (15pin D-Sub)	1	1	1	1
	HDMI	1	1	1	1
	Composite : BNC (Option)	1	1	1	1
	Component : BNC (Option)	1	1	1	1
	PC Audio	1	1	1	1
	Component Audio (Option)	1	1	1	1
	Composite Audio (Option)	1	1	1	1
	RS232C	1	1	1	1
<b>Connectivity : Output</b>	VGA (15pin D-Sub)	1	1	1	1
	HDMI (HDCP Not Supported)	1	1	1	1
	Composite : BNC (Option)	1	1	1	1
	Component : BNC (Option)	1	1	1	1
	RS-232C	1	1	1	1
	Speaker (10 W x 2 CH)	1	1	1	1
<b>Multi-Screen (Loop)</b>					
<b>Power</b>	Input Voltage	100 - 240VAC	100 - 240VAC	100 - 240VAC	100 - 240VAC
	Consumption (typ) (W)	260	260	260	260
<b>Auto Cooling System</b>		Yes	Yes	Yes	Yes
<b>Auto Power Control</b>	DPMS	Yes	Yes	Yes	Yes
<b>Feature Option</b>	AR	Option	Option	Option	Option
	Tempered Glass	Option	Yes	Option	Yes
	Optical	Option	Option	Option	No
	PIR Sensor (Motion Detection)	Option	Option	Option	Option
	Transflective	Option	Option	Option	Option
	Auto Brightness Control	Option	Option	Option	Option
<b>Dimension</b>	Set (W x H x L) mm/in.	701.8 x 1147.4 x 150 / 27.63 x 45.17 x 5.9	701.8 x 1147.4 x 150 / 27.63 x 45.17 x 5.9	701.8 x 1147.4 x 150 / 27.63 x 45.17 x 5.9	701.8 x 1147.4 x 150 / 27.63 x 45.17 x 5.9
	Stand Included (W x H x L) mm/in.	701.8 x 1992 x 500 / 27.63 x 78.43 x 19.69	701.8 x 1992 x 500 / 27.63 x 78.43 x 19.69	701.8 x 1992 x 500 / 27.63 x 78.43 x 19.69	701.8 x 1992 x 500 / 27.63 x 78.43 x 19.69
	Stand Base (W x H x D) mm/in.	701.8 x 110 x 500 / 27.63 x 4.33 x 19.69	701.8 x 110 x 500 / 27.63 x 4.33 x 19.69	701.8 x 110 x 500 / 27.63 x 4.33 x 19.69	701.8 x 110 x 500 / 27.63 x 4.33 x 19.69
<b>Dimension : With Tempered Glass</b>	Set (W x H x L) mm/in.				
	Bezel Size (U, D, L, R) mm/in.				
	Packed (W x H x D) mm/in.				
<b>Weight : Without Glass</b>	Set Weight (kg/lbs.)	106 / 233.69	118 / 260.15	110.5 / 243.61	122.5 / 270.07
	Packed Weight (kg/lbs.)				
<b>Wall Mounting Hole (W x H mm)</b>					
<b>Operation</b>	OSD Language	10 Lang	10 Lang	10 Lang	10 Lang
	Temperature (°C)	0 - 40	0 - 40	0 - 40	0 - 40
	Humidity (%)	20 - 80	20 - 80	20 - 80	20 - 80
<b>Accessories</b>		Power Cord, HDMI Cable	Power Cord, HDMI Cable	Power Cord, HDMI Cable	Power Cord, HDMI Cable
	Option	DVI to HDMI, D-SUB, RS-232C, Audio Cable	DVI to HDMI, D-SUB, RS-232C, Audio Cable	DVI to HDMI, D-SUB, RS-232C, Audio Cable	DVI to HDMI, D-SUB, RS-232C, Audio Cable

# INDOOR DIGITAL SIGNAGE

Model Name		D525SL	D525SLI	D705SL	D705SLI
<b>Panel</b>	Screen Size	52"	52"	70"	70"
	Resolution	1920 x 1080 (WUXGA)	1920 x 1080 (WUXGA)	1920 x 1080 (WUXGA)	1920 x 1080 (WUXGA)
	Aspect Ratio	16 : 9	16 : 9	16 : 9	16 : 9
	Display Colors	16.7M	16.7M	16.7M	16.7M
	Brightness(typ)	600	600	600	600
	Contrast Ratio	1700 : 1	1700 : 1	2000:1	2000:1
	Response Time (ms, GTG)	8	8	8	8
	Viewing Angle (H°/V°)	178°/178°	178°/178°	178°/178°	178°/178°
	Life Time	50,000Hr	50,000Hrs	50,000Hrs	50,000Hrs
<b>Touch Screen</b>	Housing	-	Black powder coated Metal	-	Black powder coated Metal
	Resolution	-	12928 x 7296	-	16384 x 9856
	Response Time (ms)	-	Touch : 14, Drawing : 21	-	Touch : 11, Drawing : 16
	Glass Transparency	-	93%	-	93%,
	Glass Thickness	-	5mm with anti-vandal	-	5mm with anti-vandal
	Available object size for Touch	-	Touch : Φ7, Stylus : Φ8	-	Touch : Φ7, Stylus : Φ8
	Interface	-	USB 2.0	-	USB 2.0
	Weight (kg)	-	14	-	32 (Glass 21/ touch 11)
	Touch Intensity	-	Over 60,000,000	-	Over 60,000,000
	Detection Method	-	Infrared Rays	-	Infrared Rays
<b>Optical Bonding</b>	Light Transmittance				
	Light Reflectance				
<b>Connectivity : Input</b>	VGA (15pin D-Sub)	1	1	1	1
	HDMI	1	1	1	1
	Composite : BNC (Option)	1	1	1	1
	Component : BNC (Option)	1	1	1	1
	PC Audio	1	1	1	1
	Component Audio (Option)	1	1	1	1
	Composite Audio (Option)	1	1	1	1
	RS232C	1	1	1	1
<b>Connectivity : Output</b>	VGA (15pin D-Sub)	1	1	1	1
	HDMI (HDCP Not Supported)	1	1	1	1
	Composite : BNC (Option)	1	1	1	1
	Component : BNC (Option)	1	1	1	1
	RS-232C	1	1	1	1
	Speaker (10 W x 2 CH)	1	1	1	1
<b>Multi-Screen (Loop)</b>					
<b>Power</b>	Input Voltage	100 - 240VAC	100 - 240VAC	100 - 240VAC	100 - 240VAC
	Consumption (typ) (W)	320	320	900	900
<b>Auto Cooling System</b>		Yes	Yes	Yes	Yes
<b>Auto Power Control</b>	DPMS	Yes	Yes	Yes	Yes
<b>Feature Option</b>	AR	Option	Option	Option	Option
	Tempered Glass	Option	Yes	Option	Yes
	Optical	Option	No	Option	No
	Touch Screen				
	Transflective	Option	Option	Option	Option
	Auto Brightness Control	Option	Option	Option	Option
<b>Dimension</b>	Set (W x H x L) mm/in.	780.4 x 1284.4 x 150 / 30.72 x 50.57 x 5.9	780.4 x 1284.4 x 150 / 30.72 x 50.57 x 5.9		
	Stand Included (W x H x L) mm/in.	780.4 x 2000 x 500 / 30.72 x 78.74 x 16.69	780.4 x 2000 x 500 / 30.72 x 78.74 x 16.69	1166 x 2200 x 250 / 45.91 x 86.61 x 9.84	1166 x 2200 x 250 / 45.91 x 86.61 x 9.84
	Stand Base (W x H x D) mm/in.	780.4 x 110 x 500 / 30.72 x 4.33 x 16.69	780.4 x 110 x 500 / 30.72 x 4.33 x 16.69		
<b>Dimension : With Tempered Glass</b>	Set (W x H x L) mm/in.				
	Bezel Size (U, D, L, R) mm/in.				
	Packed (W x H x D) mm/in.				
<b>Weight : Without Glass</b>	Set Weight (kg/lbs.)	116 / 255.74	130 / 286.6	TBD	TBD
	Packed Weight (kg/lbs.)				
<b>Wall Mounting Hole (W x H)</b>					
<b>Operation</b>	OSD Language	10 Lang	10 Lang	10 Lang	10 Lang
	Temperature (°C)	0 - 40	0 - 40	0 - 40	0 - 40
	Humidity (%)	20 - 80	20 - 80	20 - 80	20 - 80
<b>Accessories</b>		Power Cord, HDMI Cable	Power Cord, HDMI Cable	Power Cord, HDMI Cable	Power Cord, HDMI Cable
	Option	DVI to HDMI, D-SUB, RS-232C, Audio Cable	DVI to HDMI, D-SUB, RS-232C, Audio Cable	DVI to HDMI, D-SUB, RS-232C, Audio Cable	DVI to HDMI, D-SUB, RS-232C, Audio Cable

# PANORAMA-VISION

Model Name		C220MK	C420MK
<b>Panel</b>	Screen Size	19.03"	38.1"
	Resolution	1680 x 340	1366 x 400
	Aspect Ratio	4.9 : 1	3.4 : 1
	Display Colors	16.7M	16.7M
	Brightness(typ)	500	450
	Contrast Ratio	1000 : 1	1200:1
	Response Time (ms, GTG)	5	5
	Viewing Angle (H°/V°)	178°/178°	178°/178°
	Life Time	50,000Hr	50,000Hrs
<b>Touch Screen</b>	Housing		
	Resolution		
	Response Time (ms)		
	Glass Transparency		
	Glass Thickness		
	Available object size for Touch		
	Interface		
	Weight (kg)		
	Touch Intensity		
Detection Method			
<b>Optical Bonding</b>	Light Transmittance		
	Light Reflectance		
<b>Connectivity : Input</b>	VGA (15pin D-Sub)	1	1
	HDMI	1	1
	DVI	1	1
	Component (RCA)	1	1
	PC Audio	1	1
	Component Audio	1	1
	Composite Audio		
	RS232C	1	1
<b>Connectivity : Output</b>	VGA (15pin D-Sub)		
	HDMI (HDCP Not Supported)		
	Composite (BNC)		
	Component (BNC)		
	RS-232C		
	Speaker (10 W x 2 CH)	1	1
<b>Multi-Screen (Loop)</b>			
<b>Power</b>	Input Voltage	100 - 240VAC	100 - 240VAC
	Consumption (typ) (W)	50	110
<b>Auto Cooling System</b>			
<b>Auto Power Control</b>	DPMS	Yes	Yes
<b>Feature Option</b>	AR		
	Tempered Glass	Option	Option
	Optical		
	Touch Screen		
	Transflective		
	Auto Brightness Control		
<b>Dimension</b>	Set (W x H x L) mm/in.	500.5 x 132.8 x 60 / 19.70 x 5.23 x 2.36	987.0 x 331.7 x 96.8 / 38.86 x 13.06 x 3.81
	Bezel Size (U, D, L, R) mm/in.		
	Packed (W x H x D) mm/in.	5.5 / 12.16	22.5 / 49.6
<b>Dimension : With Tempered Glass</b>	Set (W x H x L) mm/in.		
	Bezel Size (U, D, L, R) mm/in.		
	Packed (W x H x D) mm/in.		
<b>Weight : Without Glass</b>	Set Weight (kg/lbs.)		
	Packed Weight (kg/lbs.)		
<b>Wall Mounting Hole</b>	(W x H mm)	75 x 75	600 x 200
<b>Operation</b>	OSD Language	16 Lang	16 Lang
	Temperature (°C)	0 - 40	0 - 40
	Humidity (%)	20 - 80	20 - 80
<b>Accessories</b>		Power Cord, HDMI Cable	Power Cord, HDMI Cable
	Option	DVI to HDMI, D-SUB, RS-232C, Audio Cable	DVI to HDMI, D-SUB, RS-232C, Audio Cable

# ADCALATOR

Model Name	A200K EMBEDDED	A200K PC	
<b>Panel</b>	Screen Size	20" Wide , PVA type	20" Wide , PVA type
	Resolution	1600 x 900	1600 x 900
	Aspect Ratio	16 : 9	16 : 9
	Display Colors	16.7M	16.7M
	Brightness(typ)	500	500
	Contrast Ratio	3000:1	3000:1
	Response Time (ms, GTG)	8	8
	Viewing Angle (H°/V°)	178°/178°	178°/178°
	Life Time	30,000Hr	30,000Hr
	Backlight type	LED	LED
<b>Touch Screen</b>	Resolution		
	Response Time (ms)		
	Glass Transparency		
	Glass Thickness		
	Available object size for Touch		
	Interface		
	Weight (kg)		
	Touch Intensity		
	Detection Method		
<b>Optical Bonding</b>	Light Transmittance	98 %	98 %
	Light Reflectance	0.2 %	0.2 %
<b>Connectivity : Input</b>	RS232C	1	1
	HDMI	1	1
	Wired LAN	1	1
	Wireless LAN	Option	Option
	PC Audio	1	1
	USB Port	1	3
<b>Connectivity : Output</b>	VGA (15pin D-Sub)	1	1
	HDMI	1	1
<b>Environmental Conditions</b>	Max Temperature operational (°C)	40	40
	Min Temperature operational (°C)	0	0
	Max Temperature storage (°C)	60	60
	Min Temperature storage (°C)	- 20	- 20
	Humidity (non-condensing) (%)	20 - 80	20 - 80
	International Protection		
<b>Power</b>	Input Voltage	100 - 240 VAC	100 - 240 VAC
	Consumption (typ) (W) : Master	75 (Included PC)	75 (Included PC)
	Consumption (typ) (W) : Slave	55	55
	Heater Block (with PC Case)		
<b>Feature</b>	Auto Cooling System		
	Auto Brightness Control		
	AR		
	Tempered Glass		
	Optical	Yes	Yes
	Touch Screen		
	Transflective		
	Auto Heating System		
	Anti-Vandal Glass		
	Anti-graffiti		
Surface treatment	Optical Bonding(with AR Coating)	Optical Bonding(with AR Coating)	
<b>Dimension : with Tempered Glass</b>	Set (W x H x L) mm/in.	295.5 x 626.6 x 790 / 1.63 x 24.67 x 31.1	295.5 x 626.6 x 790 / 11.63 x 24.67 x 31.1
	Glass Thickness (mm/in.)	5 / 0.20	5 / 0.20
	Packed (W x H x D) mm/in.		
<b>Weight</b>	Set Weight (kg/lbs.)	27 / 59.52	27 / 59.52
	Packed Weight (kg/lbs.)	32 / 70.55	32 / 70.55
<b>Mounting</b>	Bottom mounting		
<b>Operation</b>	OSD Language		
	Computer	No	Yes
<b>Accessories</b>		Power Cord, HDMI Cable	Power Cord, HDMI Cable
	Option		