

## Checklist of saprobic asexual microfungi from the tropical montane cloud forest of Veracruz, México.

ROSA MARÍA ARIAS<sup>a\*</sup>, GABRIELA HEREDIA<sup>a</sup>, RAFAEL F. CASTAÑEDA-RUIZ<sup>b</sup>

<sup>a</sup>*Instituto de Ecología, A.C., Carretera Antigua a Coatepec No. 351, El Haya, Xalapa, Veracruz 91070.*

<sup>b</sup>*Instituto de Investigaciones Fundamentales en Agricultura Tropical 'Alejandro de Humboldt' (INIFAT), Calle 1 Esq. 2, Santiago de Las Vegas, Ciudad Habana, Cuba, C.P. 17200.*

\*CORRESPONDENCE TO: *rosy.arias@inecol.mx*

**ABSTRACT** — A checklist comprising 355 species and 190 genera of asexual microfungi associated with plant debris collected in different localities of the tropical montane cloud forest of Veracruz, Mexico, is presented based on literature and fresh specimens. Annotations (lists of studied material and locations) are accompanied by illustrations of 31 species. A total 101 taxa are recorded for the Mexican mycobiota for the first time.

**KEY WORDS** — biodiversity, systematics, tropical cloud forest, conidial fungi.

### Introduction

The Tropical Montane Cloud Forest (TMCF) is one of the world's most diverse biomes. In Mexico, this ecosystem covers less than 1% of the land surface, but contains 10–12% of the country's flowering plant species (Rzedowski 1991). Because of its climatological characteristics and the enormous variety of microhabitats of these forests, there is considerable fungal diversity. Unfortunately, TMCF is severely endangered and disappearing from Mexico and around the world.

For more than two decades, the authors have studied saprobic asexual microfungi (SAM) collected on plant debris from different localities of TMCF in the state of Veracruz (Arias et al. 2000, 2010, 2015, 2016; Castañeda-Ruiz et al. 2000a,b, 2001, 2010, 2011, 2012, 2013; Delgado et al.

2006; Heredia 1993, 1994; Heredia & Mercado-Sierra 1998; Heredia & Reyes 1999; Heredia et al. 1995, 1997, 2000a,b, 2002, 2004, 2006, 2013, 2014; Mena-Portales et al. 1995, 2009; Mercado-Sierra & Heredia 1994; Mercado-Sierra et al. 1995, 1997, 2002). Before the present contribution, about 227 taxa of SAM had been recorded for Mexican TMCF. Most of them belongs to the Veracruz state. Unfortunately, for other Mexican states with TMCF, information on these kind of fungi is scarce or non-existent.

Although studies on the species richness of SAM have increased in recent years, the magnitude of diversity of these fungi in the Mexican TMCF remains largely unknown. To improve our knowledge about these important and diverse fungi, in this contribution, in addition to record several species unknown for Mexico, we present a current state of the SAM species recorded to date for the TMCF areas of the state of Veracruz.

### **Materials and methods**

Samples of plant debris consisting of leaf litter, dead branches, rotten wood, palm rachides, petioles and submerged plant remains, were collected. Material were placed in paper bags, taken to the laboratory, and prepared according to Castañeda-Ruiz et al. (2016). Mounts were prepared in polyvinyl alcohol and lactic acid (PVL), measurements were made at a magnification of  $\times 1000$ . Micrographs were obtained with a Nikon Eclipse 80i microscope equipped with bright field. All specimens consisting in permanent slides were deposited in the fungus collection of the Herbarium of the Instituto de Ecología A. C. (XAL). To complete the information relevant literature was extensively reviewed for scattered records. For the quantification of the species registered in the TMCF, only species published in refereed journals and documented with specimens deposited in registered collections were considered.

The Index Fungorum (<http://www.indexfungorum.org/Names/Names.asp>) database was consulted for current nomenclature and author names.

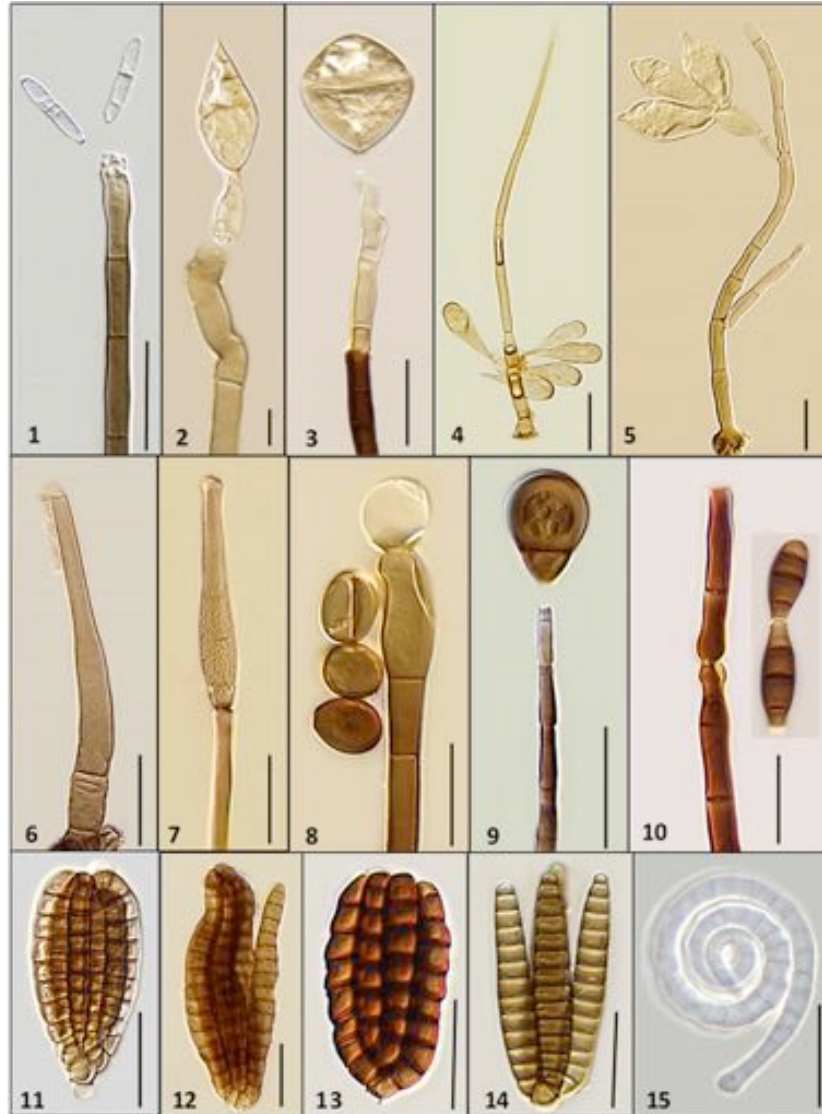
## Results

This contribution adds 42 genera and 129 species to the 148 genera and 226 species of SAM already known from TMCF in Veracruz State, taking totals up to 190 genera and 355 species.

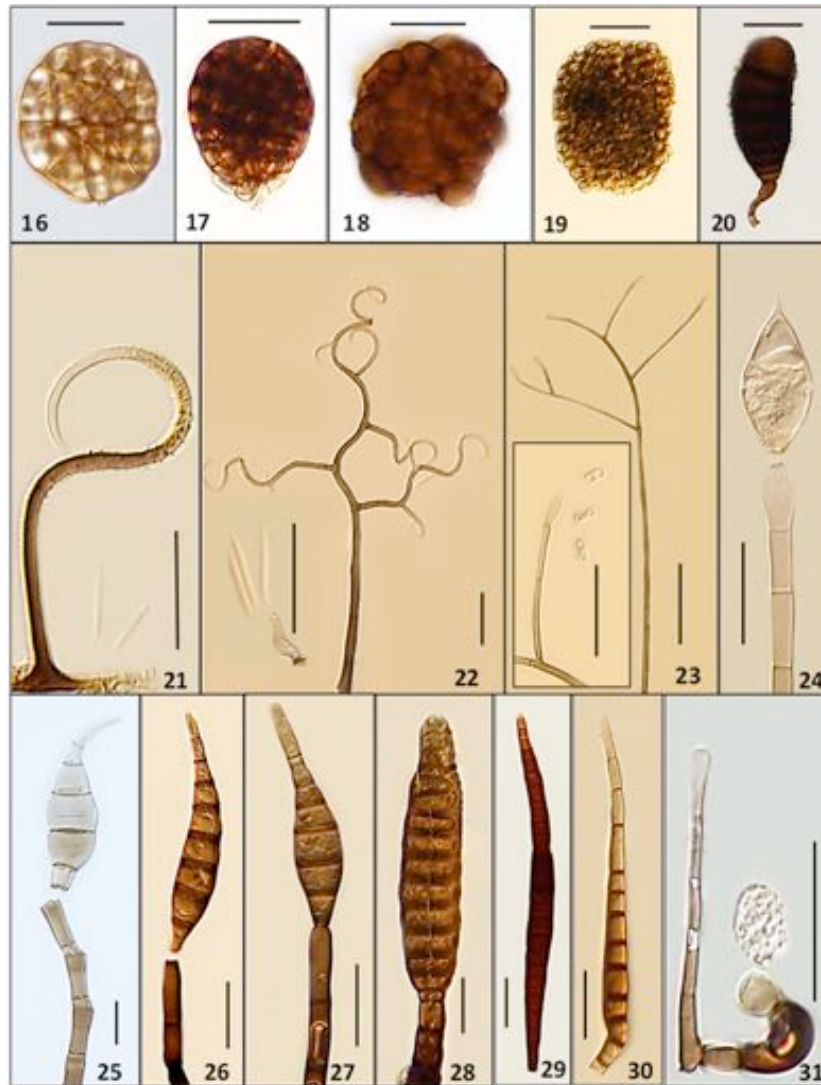
The genus with the highest number of recorded species was *Monodictys* S. Hughes with 30 species, followed by *Dictyochaeta* Speg. with eleven species, *Sporidesmium* Link with ten, *Dictyosporium* Corda with eight species and *Endophragiella* B. Sutton and *Chalara* (Corda) Rabenh, both with seven species.

Among the specimens we found six new genera and twenty-one new species. The new genera were: *Anaselenosporella*, *Anaseptoidium*, *Carrismyces*, *Helensiella*, *Minimelanolocus*, and *Veracruzomyces*. The new species were: *Acremoniula triseptata*, *Anaselenosporella sylvatica*, *Anaseptoidium mycophilum*, *Bactrodesmium simile*, *Belemnospora navicularis*, *Camposporium quercicola*, *Carrismyces proliferatus*, *Cylindrosymposium sosae*, *Dictyoaquaphila unisetulata*, *Endophragiella mexicana*, *Helensiella rigidophora*, *Hermatomyces amphispurus*, *Lobatopedis kirkii*, *Minimelanolocus curvisporus*, *Minimelanolocus limpidus*, *Monodictys spinosa*, *Piricauda mexicana*, *Pseudobeltrania macrospora*, *Redbia inflata*, *Repetophragma paracambrense*, and *Veracruzomyces obclavatus*.

Species names are listed alphabetically including information of their herbarium number and localities. An asterisk (\*) before the name of the species indicates that the taxon is reported for the first time for Mexico, and the symbol § indicates a new record for TMCF. Illustrations are provided for 31 species.



**FIGURES. 1-15.** 1. *Anungitea longicatenata*, 2. *Beltrania concurvispora*, 3. *Beltrania onirica*, 4. *Beltraniella clara*, 5. *Beltraniopsis tanzaniensis*, 6. *Chalara hughesii*, 7. *Corynespora elaeidicola*, 8. *Craspedodidymum proliferans*, 9. *Endophragmiella boewei*, 10. *Heteroconium avilae*, 11. *Dictyosporium bulbosum*, 12. *Dictyocheirospora gigantea*, 13. *Dictyosporium tetrasporum*, 14. *Digitodesmium elegans*, 15. *Helicomyces colligatus*. Scale bars: 20  $\mu\text{m}$ .



**FIGURES. 16-31.** 16. *Monodictys cerebriformis*, 17. *Monodictys melanopa*, 18. *Monodictys nitens*, 19. *Monodictys shigatsensis*, 20. *Trichocladium asperum*, 21. *Circinotrichum olivaceum*, 22. *Gyrothrix grisea*, 23. *Pendiella cubensis*, 24. *Pseudobeltrania angamosensis*, 25. *Repetophragma inflatum*, 26. *Sporidesmium australiense*, 27. *Sporidesmium nanii*, 28. *Sporidesmium vagum*, 29. *Stanjehughesia nigroascus*, 30. *Teratosperma sclerotivorum*, 31. *Zygosporium pacificum*. Scale bars: 20  $\mu$ m.

### Checklist of species

\*§ *Acanthohelicospora aurea* (Corda) Rossman & W.C. Allen, IMA Fungus 7: 2 (2016).

STUDIED MATERIAL: San Andrés Tuxtla, San Martín Tuxtla Volcano, 18°32'06"N 95°08'28"W, 1075 m asl, on decaying leaves of *Quercus* sp., coll. G. Heredia, 05/01/2011, XAL-CB2036. Soteapan, Santa Marta Volcano, 18°20'56"N 94°53'20"W, 1334 m asl, on decaying leaves, coll. G. Heredia, 05/08/2011, XAL-CB2184, XAL-CB2208.

*Acroniula triseptata* J. Mena, Heredia & Mercado, Mycotaxon 55: 492 (1995).

REFERENCE: Mercado-Sierra et al. 1995.

§ *Acrodictys bambusicola* M.B. Ellis, Mycol. Pap. 79: 6 (1961).

STUDIED MATERIAL: Xalapa, Francisco Javier Clavijero Park, 19°30'47"N 96°56'31"W, 1340 m asl, on dead branch, coll. R.M. Arias, 05/09/2011, XAL-CB2268.

*Acrodictys septosporioides* Matsush., Matsush. Mycol. Mem. 3: 2 (1983).

REFERENCE: Arias et al. 2015.

*Acrogenospora sphaerocephala* (Berk. & Broome) M.B. Ellis, Dematiaceous Hyphomycetes (Kew): 114 (1971).

REFERENCE: Mercado-Sierra & Heredia 1994.

*Alysiidiopsis pipsisewae* B. Sutton, Mycol. Pap. 132: 5 (1973).

REFERENCE: Heredia et al. 2004.

*Anaselenosporella sylvatica* Heredia, R.F. Castañeda & R.M. Arias, Mycotaxon 112: 67 (2010).

REFERENCE: Castañeda-Ruiz et al. 2010.

*Anaseptoidium mycophilum* R.F. Castañeda, Heredia & R.M. Arias, Mycotaxon 119: 448 (2012).

REFERENCE: Castañeda-Ruiz et al. 2012.

*Angulimaya sundara* Subram. & Lodha, Antonie van Leeuwenhoek 30: 329 (1964).

REFERENCE: Arias et al. 2015.

*Anungitea fragilis* B. Sutton, Mycol. Pap. 132: 10 (1973).

REFERENCE: Heredia et al. 1995.

- \*§ *Anungitea longicatenata* Matsush., Icon. microfung. Matsush. lect. (Kobe): 7 (1975). **Fig. 1**  
 STUDIED MATERIAL: San Andrés Tuxtla, San Martín Tuxtla Volcano, 18°32'06"N 95°08'28"W, 1075 m asl, on decaying leaves, coll. G. Heredia, 05/01/2011, XAL-CB1920.
- \*§ *Anungitea uniseptata* Matsush., Icon. microfung. Matsush. lect. (Kobe): 8 (1975).  
 STUDIED MATERIAL: San Andrés Tlalnahuayocan, Agüita Fría, 19°31'15"N 96°59'27"W, 1503 m asl, on decaying leaves, coll. G. Heredia, 07/02/2010, XAL-CB1702.
- \*§ *Anungitopsis triseptata* (Matsush.) R.F. Castañeda & W.B. Kendr., Univ. Waterloo Biol. Ser. 35: 12 (1991).  
 STUDIED MATERIAL: San Andrés Tlalnahuayocan, Agüita Fría, 19°31'15"N 96°59'27"W, 1503 m asl, on bark of *Platanus* sp., coll. G. Heredia, 07/02/2010, XAL-CB1703.
- § *Arachnophora polyradiata* (Mercado & R.F. Castañeda) R.F. Castañeda & W. Gams, Nova Hedwigia 64: 482 (1997).  
 STUDIED MATERIAL: San Andrés Tlalnahuayocan, Agüita Fría, 19°31'15"N 96°59'27"W, 1503 m asl, on bark of *Platanus* sp., coll. G. Heredia, 07/02/2010, XAL-CB1704.
- Bactrodesmiastrum obscurum* Hol.-Jech., Folia Geobot. Phytotax. 19(1): 105 (1984).  
 REFERENCE: Arias et al. 2015.
- Bactrodesmium biformatum* (Höhn.) S. Hughes, Fungi Canadenses, Ottawa 258: 1 (1983).  
 REFERENCE: Arias et al. 2015.
- Bactrodesmium simile* R.M. Arias, Heredia & R.F. Castañeda, Mycotaxon 131(2): 292 (2016).  
 REFERENCE: Arias et al. 2016.
- Bactrodesmium spilomeum* (Berk. & Broome) E.W. Mason & S. Hughes, Can. J. Bot. 31(5): 616 (1953).  
 REFERENCE: Arias et al. 2010.

*Belemnospora navicularis* R.F. Castañeda & Heredia, Cryptog. Mycol.  
21(4): 221 (2000).

REFERENCE: Castañeda-Ruiz & Heredia 2000b.

\*§ *Beltrania concurvispora* Matsush., Icon. microfung. Matsush. lect.  
(Kobe): 15 (1975). **Fig. 2**

STUDIED MATERIAL: Soteapan, Santa Marta Volcano, 18°20'56"N  
94°53'20"W, 1334 m asl, on decaying leaves, coll. G. Heredia, 05/08/2011,  
XAL-CB2199.

\*§ *Beltraniella havanensis* (Hol.-Jech.) Matsush., Matsush. Mycol. Mem. 5:  
5 (1987). **Fig. 24**

STUDIED MATERIAL: San Andrés Tlalnahuayocan, Agüita Fría, 19°31'15"N  
96°59'27"W, 1503 m asl, on decaying leaves, coll. G. Heredia, 07/02/2010,  
XAL-CB1871. Acajete, Mesa de la Yerba, 19°33'40"N 97°01'04"W, 1933 m  
asl, on dead branch, 05/12/2010, coll. G. Heredia, XAL-CB1913. San Andrés  
Tuxtla, San Martín Tuxtla Volcano, 18°32'06"N 95°08'28"W, 1075 m asl, on  
decaying leaves of *Quercus* sp., coll. G. Heredia, 05/01/2011, XAL-CB1974,  
XAL-CB1975, XAL-CB2024.

*Beltrania malaiensis* Wakef., Bull. Misc. Inf., Kew: 204 (1931).

REFERENCE: Heredia et al. 2004.

\*§ *Beltrania onirica* Lunghini, Mycotaxon 13(2): 333 (1981). **Fig. 3**

STUDIED MATERIAL: Xalapa, Francisco Javier Clavijero Park, 19°30'47"N  
96°56'31"W, 1340 m asl, on dead branch, coll. R.M. Arias, 05/09/2011,  
XAL-CB2270, XAL-CB2298.

*Beltrania rhombica* Penz., Michelia 2(8): 474 (1882).

REFERENCE: Heredia et al. 1994.

\*§ *Beltraniella clara* Onofri, Mycotaxon 17: 242 (1983). **Fig. 4**

STUDIED MATERIAL: San Andrés Tuxtla, San Martín Tuxtla Volcano,  
18°32'06"N 95°08'28"W, 1075 m asl, on dead branch, coll. G. Heredia,  
05/01/2011, XAL-CB1921, XAL-CB2002.

§ *Beltraniella portoricensis* (F. Stevens) Piroz. & S.D. Patil, Can. J. Bot.  
48(3): 575 (1970).

STUDIED MATERIAL: San Andrés Tlalnahuayocan, Agüita Fría, 19°31'15"N  
96°59'27"W, 1503 m asl, on decaying leaves of *Quercus* sp., coll. G.  
Heredia, 07/02/2010, XAL-CB1709. Coatepec, Rancho Guadalupe,  
19°30'00"N 97°09'00"W, 1300 m asl, on decaying leaves of *Quercus* sp.,  
coll. G. Rosas, 13/06/1995, XAL-CB411-5, XAL-CB420-8. Coatepec,



Rancho Guadalupe, 19°30'00"N 97°09'00"W, 1300 m asl, on decaying leaves of *Quercus* sp., coll. G. Heredia, 25/08/1993, XAL-CB613.

§ *Beltraniopsis ramosa* R.F. Castañeda, Revista Jardín bot. Nac., Univ. Habana 6(1): 53 (1985).

STUDIED MATERIAL: San Andrés Tuxtla, San Martín Tuxtla Volcano, 18°32'06"N 95°08'28"W, 1075 m asl, on decaying leaves of *Quercus* sp., coll. G. Heredia, 05/01/2011, XAL-CB1922.

\*§ *Beltraniopsis tanzaniensis* Piroz., Mycol. Pap. 129: 40 (1972). **Fig. 5**

STUDIED MATERIAL: San Andrés Tuxtla, San Martín Tuxtla Volcano, 18°32'06"N 95°08'28"W, 1075 m asl, on decaying leaves of *Quercus* sp., coll. G. Heredia, 05/01/2011, XAL-CB1923. Huatusco, Las Cañadas, 19°11'23"N 96°59'11"W, 1295 m asl, on submerged leaves, coll. R.M. Arias, 21/03/2011, XAL-CB2051.

*Berkleasmiium pandani* McKenzie, Mycotaxon 104: 24 (2008).

REFERENCE: Arias et al. 2016.

§ *Berkleasmiium sinense* Joanne E. Taylor, K.D. Hyde & E.B.G. Jones, Fungal Diversity Res. Ser. 12: 302 (2003).

STUDIED MATERIAL: San Andrés Tlalnahuayocan, Agüita Fría, 19°31'15"N 96°59'27"W, 1503 m asl, on branch of *Bambusa* sp., coll. G. Heredia, 07/02/2010, XAL-CB1808. Banderilla, La Martinica, 19°35'17"N 96°57'62"W, 1580 m asl, on bark, coll. R.M. Arias, 06/06/2011, XAL-CB2132.

*Botryosporium longibrachiatum* (Oudem.) Maire, Annls mycol. 1(4): 341 (1903).

REFERENCE: Heredia et al. 2004.

*Brachydesmiella biseptata* G. Arnaud ex S. Hughes, Can. J. Bot. 39: 1095 (1961).

REFERENCE: Arias et al. 2015.

*Brachysporiella pulchra* (Subram.) S. Hughes, N.Z. J. Bot. 17(2): 184 (1979).

REFERENCE: Heredia et al. 2004.

*Brachysporium obovatum* Keissl., Syll. fung. (Abellini) 4: 427 (1886).

REFERENCE: Arias et al. 2010.

***Cacumisporium pleuroconidiophorum*** (Davydkina & Melnik) R.F.

Castañeda, Heredia & Iturr., Mycotaxon 100: 332 (2007).

REFERENCE: Castañeda-Ruiz et al. 2007.

\*§ ***Calonectria pyrochroa*** (Desm.) Sacc., Michelia 1: 308 (1878).

Asexual form: *Cylindrocladium ilicicola* (Hawley) Boedijn & Reitsma, Reinwardtia 1: 57 (1950).

STUDIED MATERIAL: Acajete, Mesa de la Yerba, 19°33'40"N 97°01'04"W, 1933 m asl, on decaying leaves, 05/12/2010, coll. G. Heredia, XAL-CB1902. San Andrés Tuxtla, San Martín Tuxtla Volcano, 18°32'06"N 95°08'28"W, 1075 m asl, on dead branch, G. Heredia 05/01/2011, XAL-CB1932, XAL-CB2026. Soteapan, Santa Marta Volcano, 18°20'56"N 94°53'20"W, 1334 m asl, on decaying leaves, coll. G. Heredia, 05/08/2011, XAL-CB2220.

***Camposporium ontariense*** Matsush., Matsush. Mycol. Mem. 3: 3 (1983).

REFERENCE: Heredia et al. 2013.

***Camposporium quercicola*** Mercado, Heredia & J. Mena, Mycotaxon 55: 495 (1995).

REFERENCE: Mercado-Sierra et al. 1995.

***Campylospora filicladia*** Nawawi, Trans. Br. Mycol. Soc. 63(3): 604 (1974).

REFERENCE: Arias et al. 2015.

§ ***Canalisporium pulchrum*** (Hol.-Jech. & Mercado) Nawawi & Kuthub., Mycotaxon 34(2): 481 (1989).

STUDIED MATERIAL: San Andrés Tuxtla, San Martín Tuxtla Volcano, 18°32'06"N 95°08'28"W, 1075 m asl, on decaying leaves, coll. G. Heredia, 05/01/2011, XAL-CB2039.

***Candelabrum brocchiatum*** Tubaki, Trans. Mycol. Soc. Japan 16: 134-137 (1975).

REFERENCE: Heredia et al. 2000a.

***Candelabrum clathrosphaeroides*** Voglmayr, Mycol. Res. 102(4): 412 (1998).

REFERENCE: Arias et al. 2015.

§ ***Candelabrum microsporium*** R.F. Castañeda & W.B. Kendr., Univ. Waterloo Biol. Ser. 35: 16 (1991).

STUDIED MATERIAL: Banderilla, La Martinica, 19°35'17"N 96°57'62"W, 1580 m asl, on bark, coll. R.M. Arias, 06/06/2011, XAL-CB2106.

- Candelabrum spinulosum* Beverw., *Antonie van Leeuwenhoek* 17: 11 (1951). Loc. 16. XAL-CB797.  
REFERENCE: Delgado et al. 2006.
- Carrismyces proliferatus* R.F. Castañeda & Heredia, *Mycotaxon* 76: 128 (2000).  
REFERENCE: Castañeda-Ruiz & Heredia 2000a.
- Catenularia kalakadensis* Subram. & Bhat, *Kavaka* 15(1-2): 49 (1989).  
REFERENCE: Heredia et al. 2004.
- Ceratosporella deviata* Subram., *Proc. Indian Acad. Sci., Pl. Sci.* 46: 327 (1957).  
REFERENCE: Heredia et al. 1995.
- Ceratosporella stipitata* (Goid.) S. Hughes, *Trans. Br. Mycol. Soc.* 35: 243 (1952).  
REFERENCE: Delgado et al. 2006.
- \*§ *Cercosporula uncinata* R.F. Castañeda, *Revista Jardín Bot. Nac., Univ. Habana* 6(1): 48 (1985).  
STUDIED MATERIAL: San Andrés Tlalnelhuayocan, Agüita Fría, 19°31'15"N 96°59'27"W, 1503 m asl, on decaying leaves of *Liquidambar* sp., coll. G. Heredia, 07/02/2010, XAL-CB1808.
- \*§ *Chaetopsina acutispora* Zucconi & Rambelli, *Mycotaxon* 48: 6 (1993).  
STUDIED MATERIAL: Soteapan, Santa Marta Volcano, 18°20'56"N 94°53'20"W, 1334 m asl, on decaying leaves, 05/08/2011, coll. G. Heredia, XAL-CB2212.
- \*§ *Chaetopsina catenulata* Samuels, *Mycotaxon* 22(1): 28 (1985).  
STUDIED MATERIAL: San Andrés Tuxtla, San Martín Tuxtla Volcano, 18°32'06"N 95°08'28"W, 1075 m asl, on dead branch, coll. G. Heredia, 05/01/2011, XAL-CB1926, XAL-CB1997.
- Chaetopsina fulva* Rambelli, *Atti Acad. Sci. Ist. Bologna*: 1-6 (1956).  
REFERENCE: Arias et al. 2015.
- § *Chaetopsina nimbae* Rambelli, *Mycotaxon* 44(2): 328 (1992).  
STUDIED MATERIAL: San Andrés Tuxtla, San Martín Tuxtla Volcano, 18°32'06"N 95°08'28"W, 1075 m asl, on decaying leaves, coll. G. Heredia, 05/01/2011, XAL-CB1928, XAL-CB1929, XAL-CB1993.

\*§ *Chaetopsina penicillata* Samuels, Mycotaxon 22(1): 24 (1985).

STUDIED MATERIAL: Huatusco, Las Cañadas, 19°11'23"N 96°59'11"W, 1295 m asl, on decaying leaves, coll. R.M. Arias. 21/03/2011, XAL-CB2056, XAL-CB2057.

*Chaetopsina splendida* B. Sutton & Hodges, Nova Hedwigia 27(1-2): 346 (1976).

REFERENCE: Heredia et al. 2004.

*Chaetosphaeria aspergilloides* M.E. Barr & J.L. Crane, Can. J. Bot. 57: 835 (1979).

REFERENCE: Delgado et al. 2006. Identified as *Custingophora* anamorph of *Chaetosphaeria aspergilloides* M.E. Barr & J.L. Crane, Can. J. Bot. 57: 835 (1979).

*Chaetosphaeria dingleyae* S. Hughes, W.B. Kendr. & Shoemaker, N.Z. J. Bot. 6: 343 (1968).

REFERENCE: Heredia et al. 2004. Identified as *Dictyochaeta* anamorph *Chaetosphaeria dingleyae* S. Hughes, W.B. Kendr. & Shoemaker, N.Z. J. Bot. 6: 343 (1968).

*Chaetosphaeria vermicularioides* (Sacc. & Roum.) W. Gams & Hol.-Jech., Stud. Mycol. 13: 15 (1976).

REFERENCE: Arias et al. 2010. Identified as *Chloridium virescens* var. *chlamydosporum* (J.F.H. Beyma) W. Gams & Hol.-Jech., Stud. Mycol. 13: 21 (1976).

\*§ *Chalara affinis* Sacc. & Berl., Atti Inst. Veneto Sci. lett., ed Arti, Sér. 6 3: 741 (1885).

STUDIED MATERIAL: San Andrés Tuxtla, San Martín Tuxtla Volcano, 18°32'06"N 95°08'28"W, 1075 m asl, on decaying leaves of *Quercus* sp., coll. G. Heredia, 05/01/2011, XAL-CB2027.

*Chalara alabamensis* Morgan-Jones & E.G. Ingram, Mycotaxon 4(2): 489 (1976).

REFERENCE: Heredia et al. 1994.

*Chalara aspera* (Piroz. & Hodges) P.M. Kirk, Kew Bull. 38(4): 580 (1984).

REFERENCE: Arias et al. 2010.

\*§ *Chalara aurea* (Corda) S. Hughes, Can. J. Bot. 36 (6): 747 (1958).  
 STUDIED MATERIAL: Acajete, Mesa de la Yerba, 19°33'40"N 97°01'04"W,  
 1933 m asl, on decaying leaves, coll. G. Heredia, 05/12/2010, XAL-CB1898.  
 Cosautlan de Carbajal, 19°20'00"N 96°59'00"W, 1172 m asl, on decaying  
 leaves, coll. G. Olvera, 11/03/96, XAL-CB632.

*Chalara brevipes* Nag Raj & W.B. Kendr., A monograph of *Chalara* and  
 allied genera: 95 (1975).  
 REFERENCE: Arias et al. 2015.

\*§ *Chalara hughesii* Nag Raj & W.B. Kendr., N.Z. J. Bot. 12(1): 118  
 (1974). **Fig. 6**  
 STUDIED MATERIAL: San Andrés Tlalnelhuayocan, Agüita Fría, 19°31'15"N  
 96°59'27"W, 1503 m asl, on decaying leaves of *Quercus* sp., coll. G.  
 Heredia, 07/02/2010, XAL-CB1809. Huatusco, Las Cañadas, 19°11'23"N  
 96°59'11"W, 1295 m asl, on decaying leaves, coll. R.M. Arias, 21/03/2011,  
 XAL-CB2059, XAL-CB2060.

*Chalara urceolata* Nag Raj & W.B. Kendr., N.Z. J. Bot. 12: 120 (1974).  
 REFERENCE: Heredia et al. 1994.

*Cheiromyces echinulata* Mercado & J. Mena, Acta Botánica Cubana 53:  
 2 (1988).  
 REFERENCE: Arias et al. 2010.

\*§ *Chloridium chloroconium* (W. Gams & Hol.-Jech.) Réblová & Seifert,  
 IMA Fungus 7(1): 134 (2016).  
 STUDIED MATERIAL: San Andrés Tuxtla, San Martín Tuxtla Volcano,  
 18°32'06"N 95°08'28"W, 1075 m asl, on dead branch, G. Heredia  
 05/01/2011, XAL-CB1941.

*Chloridium lignicola* (F. Mangenot) W. Gams & Hol.-Jech., Stud. Mycol.  
 13: 37 (1976).  
 REFERENCE: Delgado et al. 2006.

*Chloridium phaeosporum* Hol.-Jech., Česká Mykol. 41(2): 113 (1987).  
 REFERENCE: Heredia et al. 2013.

*Chloridium reniforme* Hol.-Jech., Česká Mykol. 37(1): 16 (1983).  
 REFERENCE: Heredia et al. 2006.

*Circinotrichum maculiforme* Nees, Syst. Pilze (Würzburg): 19 (1817).  
REFERENCE: Arias et al. 2015.

\*§ *Circinotrichum olivaceum* (Speg.) Piroz., Mycol. Pap. 84: 6 (1962).

**Fig. 21**

STUDIED MATERIAL: San Andrés Tuxtla, San Martín Tuxtla Volcano, 18°32'06"N 95°08'28"W, 1075 m asl, on palm rachis, coll. G. Heredia, 05/01/2011, XAL-CB1930, XAL-CB2008.

§ *Circinotrichum papakurae* S. Hughes & Piroz., N.Z. J Bot. 9(1): 40 (1971).

STUDIED MATERIAL: San Andrés Tuxtla, San Martín Tuxtla Volcano, 18°32'06"N 95°08'28"W, 1075 m asl, on decaying leaves, coll. G. Heredia, 05/01/2011, XAL-CB1931, XAL-CB2001. Soteapan, Santa Marta Volcano, 18°20'56"N 94°53'20"W, 1334 m asl, on decaying leaves, 05/08/2011, coll. G. Heredia, XAL-CB2176. Huatusco, Las Cañadas, 19°11'23"N 96°59'11"W, 1295 m asl, on decaying leaves, coll. R.M. Arias, 21/03/2011, XAL-CB2063. Acatlán, Acatlán Volcano, 19°30'47"N 96°56'31"W, 1814 m asl, on dead branch, coll. R.M. Arias, 18/09/2011, XAL-CB2249.

\*§ *Cirrenalia pseudomacrocephala* Kohlm., Mycologia 60(2): 266 (1968).

STUDIED MATERIAL: Soteapan, Santa Marta Volcano, 18°20'56"N 94°53'20"W, 1334 m asl, on decaying leaves, 05/08/2011, coll. G. Heredia, XAL-CB2163.

*Cladosporium vignae* M.W. Gardner, Phytopathology 15(8): 453 (1925).  
REFERENCE: Heredia et al. 2004.

*Clasterosporium roupalae* Syd., Annls mycol. 25(1/2): 149 (1927).

REFERENCE: Heredia & Reyes, 1999. Identified as *Tripospermum roupalae* (Syd.) S. Hughes, Mycol. Pap. 46: 20 (1951).

*Condylospora flexuosa* Nawawi & Kuthub., Mycotaxon 33: 329 (1988).

REFERENCE: Arias et al. 2015.

*Cochliobolus bicolor* A.R. Paul & Parbery, Trans. Br. Mycol. Soc. 49(3): 386 (1966).

REFERENCE: Mena-Portales et al. 1995.

*Cordana abramovii* Seman & Davydkina, Nov. sist. Niz. Rast. 20: 115 (1983).

REFERENCE: Heredia et al. 2006.

*Cordana crassa* Tóth, Annls hist.-nat. Mus. natn. hung. 67: 32 (1975).  
REFERENCE: Heredia et al. 2004.

\* § *Cordana ellipsoidea* de Hoog, Acta bot. neerl. 22(3): 209 (1973).  
STUDIED MATERIAL: San Andrés Tlalnelhuayocan, Agüita Fría, 19°31'15"N  
96°59'27"W, 1503 m asl, on wood, coll. G. Heredia, 07/02/2010, XAL-  
CB1814, XAL-CB1870.

\*§ *Cordana uniseptata* L. Cai, McKenzie & K.D. Hyde, Sydowia 56(2): 223  
(2004).  
STUDIED MATERIAL: San Andrés Tlalnelhuayocan, Agüita Fría, 19°31'15"N  
96°59'27"W, 1503 m asl, on wood, coll. G. Heredia, 07/02/2010, XAL-  
CB1815.

*Corynespora citricola* M.B. Ellis, Mycol. Pap. 65: 1-15 (1957).  
REFERENCE: Heredia & Reyes 1999.

\*§ *Corynespora elaeidicola* M.B. Ellis, Mycol. Pap. 76: 24 (1960). **Fig. 7**  
STUDIED MATERIAL: Huatusco, Las Cañadas, 19°11'23"N 96°59'11"W, 1295  
m asl, on submerged leaves, coll. R.M. Arias, 21/03/2011, XAL-CB2064.

\*§ *Craspedodidymum proliferans* V. Rao & de Hoog, Stud. Mycol. 28: 64  
(1986). **Fig. 8**  
STUDIED MATERIAL: Soteapan, Santa Marta Volcano, 18°20'56"N  
94°53'20"W, 1334 m asl, on dead branch, coll. G. Heredia, 05/08/2011,  
XAL-CB2177.

*Cryptophiale kakombensis* Piroz., Can. J. Bot. 46: 1124 (1968).  
REFERENCE: Heredia 1994.

*Cryptophiale udagawae* Piroz. & Ichinoe, Can. J. Bot. 46: 1126 (1968).  
REFERENCE: Heredia 1994.

*Curvularia australiensis* (Bugnic. ex M.B. Ellis) Manamgoda, L. Cai & K.D.  
Hyde, Fungal Diversity 56(1): 140 (2012).  
REFERENCE: Mena-Portales et al. 1995.

*Curvularia brachyspora* Boedijn, Bull. Jard. Bot. Buitenz. III, 13(1): 126  
(1933).  
REFERENCE: Mena-Portales et al. 1995.

*Curvularia clavata* Jain, Trans. Br. Mycol. Soc. 45:542 (1962).

REFERENCE: Mena-Portales et al. 1995.

*Curvularia eragrostidis* (Henn.) J.A. Meyer, Pub. Inst. mat. Etude agron. Congo Belge, Ser. Sci. 75: 183 (1959).

REFERENCE: Mena-Portales et al. 1995.

*Curvularia hawaiiensis* (Bugnic. ex M.B. Ellis) Manamgoda, L. Cai & K.D. Hyde, Fungal Diversity 56(1): 141 (2012).

REFERENCE: Mena-Portales et al. 1995.

*Curvularia lunata* (Wakker) Boedijn, Bull. Jard. bot. Buitenz. III, 13(1): 127(1933).

REFERENCE: Mena-Portales et al. 1995.

*Curvularia pallescens* Boedijn, Bull. Jard. bot. Buitenz. III, 13(1): 127 (1933).

REFERENCE: Mena-Portales et al. 1995.

*Curvularia senegalensis* (Speg.) Subram., J. Indian bot. Soc. 35:467 (1956).

REFERENCE: Mena-Portales et al. 1995.

*Curvularia spicifera* (Bainier) Boedijn, Bull. Jard. bot. Buitenz, 3 Sér. 13(1): 127 (1933).

REFERENCE: Mena-Portales et al. 1995.

\*§ *Cylindrosymposium robustum* R.F. Castañeda & W.B. Kendr., Univ. Waterloo Biol. Ser. 35: 26 (1991).

STUDIED MATERIAL: San Andrés Tlalnahuayocan, Agüita Fria, 19°31'15"N 96°59'27"W, 1503 m asl, on bark of *Platanus* sp., coll. G. Heredia, 07/02/2010, XAL-CB1818.

*Cylindrosymposium sosae* R.F. Castañeda, Heredia & R.M. Arias, Mycotaxon 119: 145 (2012).

REFERENCE: Castañeda-Ruiz et al. 2012.

§ *Dactylaria candidula* (Höhn.) G.C. Bhatt & W.B. Kendr., Can. J. Bot. 46: 1256 (1968).

STUDIED MATERIAL: San Andrés Tlalnahuayocan, Agüita Fria, 19°31'15"N 96°59'27"W, 1503 m asl, on bark and wood of *Platanus* sp., coll. G. Heredia, 07/02/2010, XAL-CB1819, XAL-CB1820, XAL-CB1837. Sotepan, Santa



Marta Volcano, 18°20'56"N 94°53'20"W, 1334 m asl, on decaying leaves, coll. G. Heredia, 05/08/2011, XAL-CB2220.

*Dactylellina ellipsospora* (Preuss) M. Scholler, Hagedorn & A. Rubner,  
Sydowia 51(1): 110 (1999).  
REFERENCE: Heredia et al. 1995.

*Dactylosporium macropus* (Corda) Harz, Linig. Hyph.: 45 (1871).  
REFERENCE: Heredia et al. 2013.

\*§ *Dematioscypha dematiicola* (Berk. & Broome) Svrček, Česká Mykol.  
31(4): 193 (1977).  
Asexual form: *Haplographium delicatum* Berk. & Broome, Annals and  
Magazine of Natural History 3: 361, t. 9: 4 (1859).  
STUDIED MATERIAL: San Andrés Tlalnelhuayocan, Agüita Fria, 19°31'15"N  
96°59'27"W, 1503 m asl, on wood, coll. G. Heredia, 07/02/2010, XAL-  
CB1835. San Andrés Tuxtla, San Martín Tuxtla Volcano, 18°32'06"N  
95°08'28"W, 1075 m asl, on dead branch, coll. G. Heredia, 05/01/2011,  
XAL-CB1943.

*Dendryphiella vinosa* (Berk. & M.A. Curtis) Reisinger, Bull. trimest. Soc.  
mycol. Fr. 84(1): 27 (1968).  
REFERENCE: Mercado-Sierra & Heredia 1994.

*Dendryphion comosum* Wallr., Fl. crypt. Germ. (Norimbergae) 2: 300  
(1833).  
REFERENCE: Mercado-Sierra & Heredia 1994.

*Dendryphion digitatum* Subram., Proc. natn. Acad. Sci. India, Sect. B, Biol.  
Sci. 36: 289 (1952).  
REFERENCE: Heredia et al. 2013.

*Dendryphiopsis arbuscula* (Berk. & M.A. Curtis) S. Hughes, Can. J. Bot. 36:  
762 (1958).  
REFERENCE: Arias et al. 2010.

*Dictyoaquaphila unisetulata* R.M. Arias, Heredia & R.F. Castañeda,  
Mycotaxon 131(2): 292 (2016).  
REFERENCE: Arias et al. 2016.

*Dictyochaeta antillana* R.F. Castañeda, Fungi Cubenses III (La Habana): 7 (1988).

REFERENCE: Heredia et al. 2000b.

*Dictyochaeta assamica* (Agnihothr.) Aramb., Cabello & Mengasc., Darwiniana 28: 297 (1988).

REFERENCE: Heredia et al. 1995.

*Dictyochaeta cylindrospora* (Morgan-Jones & E.G. Ingram) Aramb. & Cabello, Mycotaxon 34(2): 679-696 (1989).

REFERENCE: Heredia et al. 2000b.

*Dictyochaeta fertilis* (S. Hughes & W.B. Kendr.) Hol.-Jech., Folia Geobot. Phytot. 19: 387.

REFERENCE: Heredia et al. 2000b.

\*§ *Dictyochaeta microcylindrospora* Whitton, McKenzie & K.D. Hyde, Fungal Diversity 4: 141 (2000).

STUDIED MATERIAL: Soteapan, Santa Marta Volcano, 18°20'56"N 94°53'20"W, 1334 m asl, on decaying leaves, coll. G. Heredia, 05/08/2011, XAL-CB2164.

*Dictyochaeta novae-guineensis* (Matsush.) A.I. Romero. Aramb. & Cabello. Mycotaxon 34: 679-696, 1989.

REFERENCE: Heredia et al. 2000b

*Dictyochaeta pluriguttulata* Kuthub. & Nawawi, Mycol. Res. 95(10): 1212 (1991).

REFERENCE: Arias et al. 2015.

*Dictyochaeta simplex* (S. Hughes & W.B. Kendr.) Hol.-Jech., Folia Geobot. Phytotax. 19(4): 434 (1984).

REFERENCE: Heredia et al. 1995.

\*§ *Dictyochaeta stipitocolla* Kuthub. & Nawawi, Mycol. Res. 95(10): 1214 (1991).

STUDIED MATERIAL: Huatusco, Las Cañadas, 19°11'23"N 96°59'11"W, 1295 m asl, on decaying leaves, coll. R.M. Arias, 21/03/2011, XAL-CB2075.

*Dictyochaeta tumidospora* Kuthub. & Nawawi, Mycol. Res. 95(1): 106 (1991).

REFERENCE: Arias et al. 2010.

- \*§ *Dictyochaetopsis brasiliensis* M. Calduch, Gené, Stchigel & Guarro, Mycologia 94(6): 1071 (2002).  
 STUDIED MATERIAL: Banderilla, La Martinica, 19°35'17"N 96°57'62"W, 1580 m asl, on bark, coll. R.M. Arias, 06/06/2011, XAL-CB2111.
- § *Dictyochaetopsis menisporoides* (Hol.-Jech.) Aramb. & Cabello, Mycotaxon 38: 13 (1990).  
 STUDIED MATERIAL: Huatusco, Las Cañadas, 19°11'23"N 96°59'11"W, 1295 m asl, on decaying leaves of *Quercus* sp., coll. R.M. Arias, 21/03/2011, XAL-CB2076.
- Dictyochaetopsis polysetosa* R.F. Castañeda, Gusmão, Guarro & Saikawa, Mycotaxon 103: 2 (2008).  
 REFERENCE: Arias et al. 2015.
- \*§ *Dictyocheirospora gigantea* (Goh & K.D. Hyde) D'souza, Boonmee & K.D. Hyde, Fungal Diversity 80: 469 (2016). **Fig. 12**  
 STUDIED MATERIAL: San Andrés Tuxtla, San Martín Tuxtla Volcano, 18°32'06"N 95°08'28"W, 1075 m asl, on decaying leaves, G. Heredia, 05/01/2011, XAL-CB1936.
- \*§ *Dictyosporium bulbosum* Tzean & J.L. Chen, Mycol. Res. 92(4): 500 (1989). **Fig. 11**  
 STUDIED MATERIAL: Xalapa, Francisco Javier Clavijero Park, 19°30'47"N 96°56'31"W, 1340 m asl, on dead branch, coll. R.M. Arias, 05/09/2011, XAL-CB2264, XAL-CB2282, XAL-CB2294.
- \*§ *Dictyosporium campaniforme* Matsush., Icon. microfung. Matsush. lect. (Kobe): 59 (1975).  
 STUDIED MATERIAL: Soteapan, Santa Marta Volcano, 18°20'56"N 94°53'20"W, 1334 m asl, on dead branch, coll. G. Heredia, 05/08/2011, XAL-CB2179.
- Dictyosporium digitatum* J.L. Chen, C.H. Hwang & Tzean, Mycol. Res. 95(9): 1145 (1991).  
 REFERENCE: Arias et al. 2010.
- Dictyosporium heptasporum* (Garov.) Damon, Lloydia 15: 118 (1952).  
 REFERENCE: Heredia et al. 1995.

\*§ *Dictyosporium prolificum* Damon, Lloydia 15: 119 (1952).  
 STUDIED MATERIAL: San Andrés Tuxtla, San Martín Tuxtla Volcano, 18°32'06"N 95°08'28"W, 1075 m asl, on dead branch, coll. G. Heredia, 05/01/2011, XAL-CB1937, XAL-CB2010, XAL-CB2018.

*Dictyosporium subramanianii* B. Sutton, Proc. Indian Acad. Sci., Pl. Sci. 94(2-3): 239 (1985).  
 REFERENCE: Mercado-Sierra & Heredia 1994.

\*§ *Dictyosporium tetrasporum* L. Cai & K.D. Hyde, Mycoscience 48(5): 290 (2007). **Fig. 13**  
 STUDIED MATERIAL: Banderilla, La Martinica, 19°35'17"N 96°57'62"W, 1580 m asl, on wood, coll. R.M. Arias, 06/06/2011, XAL-CB2133.

\*§ *Dictyosporium toruloides* (Corda) Guég., Bull. Soc. mycol. Fr. 21: 101 (1905).  
 STUDIED MATERIAL: Huatusco, Las Cañadas, 19°11'23"N 96°59'11"W, 1295 m asl, on wood, coll. R.M. Arias, 21/03/2011, XAL-CB2077.

\*§ *Digitodesmium elegans* P.M. Kirk, Trans. Br. Mycol. Soc. 77(2): 286 (1981). **Fig. 14**  
 STUDIED MATERIAL: San Andrés Tlalnahuayocan, Agüita Fría, 19°31'15"N 96°59'27"W, 1503 m asl, on dead branch, coll. G. Heredia, 07/02/2010, XAL-CB1826.

*Diplocladiella scalaroides* G. Arnaud ex M.B. Ellis, More Dematiaceous Hyphomycetes (Kew): 229 (1976).  
 REFERENCE: Heredia 1994.

*Ellisembia bambusicola* (M.B. Ellis) J. Mena & G. Delgado, Bol. Soc. Micol. Madrid 25: 266 (2000).  
 REFERENCE: Delgado et al. 2006.

*Ellisembia brachypus* (Ellis & Everh.) Subram., Proc. Indian natn Sci. Acad., Part B. Biol. Sci. 58(4): 183 (1992).  
 REFERENCE: Heredia et al. 2006.

\*§ *Ellisembia calyptrata* (Cabello, Cazau & Aramb.) W.P. Wu, Fungal Diversity Res. Ser. 15: 117 (2005).  
 STUDIED MATERIAL: Banderilla, La Martinica, 19°35'17"N 96°57'62"W, 1580 m asl, on wood, coll. R.M. Arias, 06/06/2011, XAL-CB2112.

*Ellisemia leptospora* (Sacc. & Roum.) W.P. Wu, Fungal Diversity Res. Ser. 15: 140 (2005).

REFERENCE: Mercado-Sierra & Heredia 1994.

\*§ *Endophragmiella angustispora* S. Hughes, Fungi Canadenses, Ottawa: no. 123 (1978).

STUDIED MATERIAL: San Andrés Tlalnelhuayocan, Agüita Fría, 19°31'15"N 96°59'27"W, 1503 m asl, on dead branch, coll. G. Heredia, 07/02/2010, XAL-CB1828.

\*§ *Endophragmiella boewei* (J.L. Crane) S. Hughes, N.Z. J Bot. 17(2): 147 (1979). **Fig. 9**

STUDIED MATERIAL: Soteapan, Santa Marta Volcano, 18°20'56"N 94°53'20"W, 1334 m asl, on dead branch, coll. G. Heredia, 05/08/2011, XAL-CB2167.

*Endophragmiella collapsa* (B. Sutton) S. Hughes, Fungi Canadenses, Ottawa: no. 126 (1978).

REFERENCE: Arias et al. 2010.

*Endophragmiella mexicana* J. Mena, Heredia & Mercado, Mycotaxon 55: 496 (1995).

REFERENCE: Mercado-Sierra et al. 1995.

\*§ *Endophragmiella novae-zelandiae* S. Hughes, N.Z. J Bot. 16(3): 330 (1978).

STUDIED MATERIAL: Soteapan, Santa Marta Volcano, 18°20'56"N 94°53'20"W, 1334 m asl, on dead branch, coll. G. Heredia, 05/08/2011, XAL-CB2207.

\*§ *Endophragmiella uniseptata* (M.B. Ellis) S. Hughes, N.Z. J Bot. 17(2): 156 (1979).

STUDIED MATERIAL: San Andrés Tlalnelhuayocan, Agüita Fría, 19°31'15"N 96°59'27"W, 1503 m asl, on wood, coll. G. Heredia, 07/02/2010, XAL-CB1829.

*Endophragmiella valdiviana* (Speg.) S. Hughes, N.Z. J Bot. 17(2): 157 (1979).

REFERENCE: Arias et al. 2010.

*Epicoccum nigrum* Link, Magazin Ges. naturf. Freunde, Berlin 7: 32 (1815).

REFERENCE: Arias et al. 2010.

\*§ *Eriocercospora balladynae* (Hansf.) Deighton, Mycol. Pap. 118: 6 (1969).

STUDIED MATERIAL: San Andrés Tlalnahuayocan, Agüita Fria, 19°31'15"N 96°59'27"W, 1503 m asl, on fern rachis, coll. G. Heredia, 07/02/2010, XAL-CB1831, XAL-CB1832.

§ *Ernakulamia cochinchinensis* (Subram.) Subram., Kavaka 22/23: 67 (1996).

STUDIED MATERIAL: San Andrés Tuxtla, San Martín Tuxtla Volcano, 18°32'06"N 95°08'28"W, 1075 m asl, on decaying leaves, coll. G. Heredia, 05/01/2011, XAL-CB1969.

*Eversia parvula* Hol.-Jech., Česká Mykol. 41(1): 31 (1987).

REFERENCE: Heredia et al. 2004.

*Exophiala mansonii* (Castell.) de Hoog, Stud. Mycol. 15: 114 (1977).

REFERENCE: Heredia & Reyes 1999.

*Exserticlava vasiformis* (Matsush.) S. Hughes, N.Z. J. Bot. 16(3): 332 (1978).

REFERENCE: Heredia et al. 2004.

*Fusariella intermedia* Mouch. & Nicot, Revue Mycol., Paris 37(3): 181 (1973).

REFERENCE: Arias et al. 2010.

*Fusichalara dimorphospora* S. Hughes & Nag Raj, N.Z. J. Bot. 11: 663 (1973).

REFERENCE: Arias et al. 2015.

*Fusichalara minuta* Hol.-Jech., Stud. Mycol. 13: 76 (1976).

REFERENCE: Arias et al. 2015.

*Gliomastix luzulae* (Fuckel) E.W. Mason ex S. Hughes, Can. J. Bot. 36: 769 (1958).

REFERENCE: Mercado-Sierra & Heredia 1994.

*Gonytrichum macrocladum* (Sacc.) S. Hughes, Trans. Br. Mycol. Soc. 34(4): 565 (1951).

REFERENCE: Heredia et al. 1955.

\*§ *Guedea novae-zelandiae* S. Hughes, N.Z. J Bot. 18(1): 65 (1980).  
 STUDIED MATERIAL: Xalapa, Francisco Javier Clavijero Park, 19°30'47"N 96°56'31"W, 1340 m asl, on dead branch, coll. R.M. Arias, 05/09/2011, XAL-CB2265. Banderilla, La Martinica, 19°35'17"N 96°57'62"W, 1580 m asl, on dead branch, coll. J. Mena, 24/07/95, XAL-CB483-4. Banderilla, La Martinica, 19°35'17"N 96°57'62"W, 1580 m asl, on dead branch, coll. G. Heredia, 10/07/1995, XAL-CB854, XAL-CB854-1.

*Gyrothrix circinata* (Berk. & M.A. Curtis) S. Hughes, Can. J. Bot. 36: 771 (1958).

REFERENCE: Heredia et al. 1995.

\*§ *Gyrothrix citricola* Piroz., Mycol. Pap. 84: 19 (1962).  
 STUDIED MATERIAL: Banderilla, La Martinica, 19°35'17"N 96°57'62"W, 1580 m asl, on wood, coll. R.M. Arias, 06/06/2011, XAL-CB2135.

\*§ *Gyrothrix grisea* Piroz., Mycol. Pap. 84: 17 (1962). **Fig. 22**  
 STUDIED MATERIAL: San Andrés Tuxtla, Volcano, on dead branch, coll. G. Heredia, 05/01/2011, XAL-CB1942.

\*§ *Gyrothrix microsperma* (Höhn.) Piroz., Mycol. Pap. 84: 14 (1962).  
 STUDIED MATERIAL: San Andrés Tlalnahuayocan, Agüita Fría, 19°31'15"N 96°59'27"W, 1503 m asl, on decaying leaves of *Liquidambar* sp., coll. G. Heredia, 07/02/2010, XAL-CB1894. Coatepec, Rancho Guadalupe, 19°30'00"N 97°09'00"W, 1300 m asl, on bark, coll. A. Mercado, 11/03/1996, XAL-CB628-1.

*Gyrothrix podosperma* (Corda) Rabenh., Deutschl. Krypt.-Fl. (Leipzig) 1: 72 (1844).

REFERENCE: Heredia et al. 2004.

§ *Gyrothrix verticiclada* (Goid.) S. Hughes & Piroz., N.Z. J Bot. 9(1): 42 (1971).  
 STUDIED MATERIAL: Acajete, Mesa de la Yerba, 19°33'40"N 97°01'04"W, 1933 m asl, on decaying leaves, coll. G. Heredia, 05/12/2010, XAL-CB1905, XAL-CB2044. Banderilla, La Martinica, 19°35'17"N 96°57'62"W, 1580 m asl, on decaying leaves, coll. R.M. Arias, 06/06/2011, XAL-CB2149. Sotepan, Santa Marta Volcano, 18°20'56"N 94°53'20"W, 1334 m asl, on dead branch, coll. G. Heredia, 05/08/2011, XAL-CB2201.

\*§ *Harpographium congestum* (Berk. & Broome) Deighton, Trans. Br. Mycol. Soc. 62(2): 251 (1974).

STUDIED MATERIAL: Acajete, Mesa de la Yerba, 19°33'40"N 97°01'04"W, 1933 m asl, on dead branch, 05/12/2010, coll. G. Heredia, XAL-CB1906.

*Helensiella rigidophora* (R.F. Castañeda, Heredia & R.M. Arias) Minter, R.F. Castañeda & Heredia, Index Fungorum 226: 1 (2015).

REFERENCE: Castañeda-Ruiz et al. 2013.

§ *Helicoma ambiens* Morgan, J. Cincinnati Soc. Nat. Hist. 15: 46 (1892).

STUDIED MATERIAL: San Andrés Tuxtla, San Martín Tuxtla Volcano, 18°32'06"N 95°08'28"W, 1075 m asl, on dead branch, coll. G. Heredia, 05/01/2011, XAL-CB1944, XAL-CB2030.

*Helicoma muelleri* Corda, Icon. fung. (Prague) 1: 15 (1837).

REFERENCE: Heredia et al. 2006.

*Helicoma palmigenum* (Penz. & Sacc.) Linder, Ann. Mo. Bot. Gdn. 16:306 (1929).

REFERENCE: Arias et al. 2010.

\*§ *Helicoma perelegans* Thaxt. ex Linder, Ann. Mo. Bot. Gdn 16: 303 (1929).

STUDIED MATERIAL: San Andrés Tlalnahuayocan, Agüita Fría, 19°31'15"N 96°59'27"W, 1503 m asl, on decaying leaves of *Liquidambar* sp., coll. G. Heredia, 07/02/2010, XAL-CB1836. Acatlan, Acatlan Volcano, 19°30'47"N 96°56'31"W, 1814 m asl, on wood, coll. R.M. Arias, 18/09/2011, XAL-CB2241.

\*§ *Helicomycetes colligatus* R.T. Moore, Mycologia 46(1): 89 (1954). **Fig. 15**

STUDIED MATERIAL: San Andrés Tuxtla, San Martín Tuxtla Volcano, 18°32'06"N 95°08'28"W, 1075 m asl, on dead branch, coll. G. Heredia, 05/01/2011, XAL-CB1945.

\*§ *Helicomycetes torquatus* L.C. Lane & Shearer, Mycotaxon 19: 291 (1984).

STUDIED MATERIAL: San Andrés Tuxtla, San Martín Tuxtla Volcano, 18°32'06"N 95°08'28"W, 1075 m asl, on dead branch, coll. G. Heredia, 05/01/2011, XAL-CB1946. Volcano Santa Marta, on bark, coll. G. Heredia, 05/08/2011, XAL-CB2234. Acatlan, Acatlan Volcano, 19°30'47"N 96°56'31"W, 1814 m asl, on wood, coll. R.M. Arias, 18/09/2011, XAL-CB2239. Xalapa, Francisco Javier Clavijero Park, 19°30'47"N 96°56'31"W, 1340 m asl, on dead branch, coll. R.M. Arias, 05/09/2011, XAL-CB2281. Xalapa, Macuiltepetl Hill, 19°32'54"N 96°55'15"W, 1500 m asl, on decaying leaves, coll. G. Heredia, 10/06/1995, XAL-CB857.



*Helicoön doliiformis* H.S. Chang, Bot. Bull. Sin. (Taipei) 42: 149 (2001).  
REFERENCE: Arias et al. 2015.

*Helicosporium griseum* Berk. & M.A. Curtis, Grevillea 3(no. 26): 51 (1874).  
REFERENCE: Heredia et al. 1995.

\*§ *Helicosporium guianense* Linder, Ann. Mo. bot. Gdn 16: 280 (1929).  
STUDIED MATERIAL: San Andrés Tlalnahuayocan, Agüita Fría, 19°31'15"N  
96°59'27"W, 1503 m asl, on dead branch, coll. G. Heredia, 07/02/2010,  
XAL-CB1839, XAL-CB1840, XAL-CB1841, XAL-CB1842.

\*§ *Helicosporium nizamabadense* P.Rag. Rao & D. Rao, Mycopath. Mycol.  
appl. 24(1): 34 (1964).  
STUDIED MATERIAL: Banderilla, La Martinica, 19°35'17"N 96°57'62"W,  
1580 m asl, on decaying leaves, coll. R.M. Arias, 06/06/2011, XAL-CB2128.

§ *Helicosporium panachaeum* R.T. Moore, Mycologia 46(1): 92 (1954).  
STUDIED MATERIAL: Xalapa, Francisco Javier Clavijero Park, 19°30'47"N  
96°56'31"W, 1340 m asl, on dead branch, coll. R.M. Arias, 05/09/2011,  
XAL-CB2289.

*Helicosporium talbotii* Goos, Mycologia 81: 356-374 (1989).  
REFERENCE: Arias et al. 2000.

*Helminthosporium solani* Durieu & Mont., Flora Algérie 1: 356 (1849).  
REFERENCE: Arias et al. 2010.

*Helminthosporium velutinum* Link, Magazin. Ges. Naturf. Freunde, Berlin,  
3:10 (1809).  
REFERENCE: Heredia et al. 2006.

*Henicospira minor* P.M. Kirk & B. Sutton, Trans. Br. Mycol. Soc. 75(2):  
249 (1980).  
REFERENCE: Heredia et al. 2006.

*Hermatomyces amphisorus* R.F. Castañeda & Heredia, Cryptog. Mycol.  
21(4): 223 (2000).  
REFERENCE: Castañeda-Ruiz & Heredia 2000b.

*Hermatomyces tucumanensis* Speg., Annals del Museo Nacional de Hist.  
Nat. de Buenos Aires 13: 446 (1911).  
REFERENCE: Arias et al. 2010.

\*§ *Heteroconium avilae* R.F. Castañeda, Iturr., Heredia & Minter, Mycotaxon 105: 176 (2008). **Fig. 10**  
 STUDIED MATERIAL: Soteapan, Santa Marta Volcano, 18°20'56"N 94°53'20"W, 1334 m asl, on bark, coll. G. Heredia, 05/08/2011, XAL-CB1710.

*Hobsonia mirabilis* (Peck) Linder, Brittonia 11: 98-101 (1959).  
 REFERENCE: Heredia et al. 2002.

*Hyphodiscosia jaipurensis* Lodha & K.R.C. Reddy, Trans. Br. Mycol. Soc. 62(2): 421 (1974).  
 REFERENCE: Heredia et al. 2004.

*Hyphodiscosia queenslandica* Matsush., Matsush. Mycol. Mem. 6: 24 (1989).  
 REFERENCE: Arias et al. 2010.

\*§ *Idriella angamosensis* Matsush., Matsush. Mycol. Mem. 8: 22 (1995).  
 STUDIED MATERIAL: Soteapan, Santa Marta Volcano, 18°20'56"N 94°53'20"W, 1334 m asl, on decaying leaves, coll. G. Heredia, 05/08/2011, XAL-CB2169, XAL-CB2185, XAL-CB2228.

\*§ *Idriella lunata* P.E. Nelson & S. Wilh., Mycologia 48(4): 550 (1956).  
 STUDIED MATERIAL: San Andrés Tuxtla, San Martín Tuxtla Volcano, 18°32'06"N 95°08'28"W, 1075 m asl, on decaying leaves, coll. G. Heredia, 05/01/2011, XAL-CB1951.

*Idriella rara* R.F. Castañeda, Deuteromycotina de Cuba, Hyphomycetes (La Habana) II: 6 (1985).  
 REFERENCE: Heredia et al. 2004.

\*§ *Idriella taiwanensis* Matsush., Matsush. Mycol. Mem. 1: 45 (1980).  
 STUDIED MATERIAL: San Andrés Tlalnahuayocan, Agüita Fría, 19°31'15"N 96°59'27"W, 1503 m asl, on bark of *Platanus* sp., coll. G. Heredia, 07/02/2010, XAL-CB1844.

\*§ *Isthmolongispora variabilis* Matsush., Icon. microfung. Matsush. lect. (Kobe): 90 (1975).  
 STUDIED MATERIAL: Acajete, Mesa de la Yerba, 19°33'40"N 97°01'04"W, 1933 m asl, on dead branch, 05/12/2010, coll. G. Heredia, XAL-CB1908.

*Isthmotricladia gombakiensis* Nawawi, Trans. Br. Mycol. Soc. 64(2): 243-246 (1975).

REFERENCE: Heredia et al. 1995.

*Ityorhoptrum verruculosum* (M.B. Ellis) P.M. Kirk, Trans. Br. Mycol. Soc. 86(3): 419 (1986).

REFERENCE: Arias et al. 2015.

§ *Junewangia globulosa* (Tóth) W.A. Baker & Morgan-Jones, Mycotaxon 81: 308 (2002).

STUDIED MATERIAL: San Andrés Tlalnahuayocan, Agüita Fría, 19°31'15"N 96°59'27"W, 1503 m asl, on wood, coll. G. Heredia, 07/02/2010, XAL-CB1845. San Andrés Tuxtla, San Martín Tuxtla Volcano, 18°32'06"N 95°08'28"W, 1075 m asl, on dead branch, coll. G. Heredia, 05/01/2011, XAL-CB1952. Huatusco, Las Cañadas, 19°11'23"N 96°59'11"W, 1295 m asl, on wood, coll. R.M. Arias, 21/03/2011, XAL-CB2050. Xalapa, Francisco Javier Clavijero Park, 19°30'47"N 96°56'31"W, 1340 m asl, on dead branch, coll. R.M. Arias, 05/09/2011, XAL-CB2277.

*Kendrickiella phycomyces* (Auersw.) K. Jacobs & M.J. Wingf., Can. J. Bot. 79(1): 113 (2001).

REFERENCE: Arias et al. 2010.

*Kionochaeta ramifera* (Matsush.) P.M. Kirk & B. Sutton, Trans. Br. Mycol. Soc. 85(4): 715 (1985).

REFERENCE: Mercado-Sierra & Heredia 1994.

\*§ *Kionochaeta spissa* P.M. Kirk & B. Sutton, Trans. Br. Mycol. Soc. 85(4): 715 (1986).

STUDIED MATERIAL: Soteapan, Santa Marta Volcano, 18°20'56"N 94°53'20"W, 1334 m asl, on dead branch, coll. G. Heredia, 05/08/2011, XAL-CB2170.

§ *Kirschsteiniothelia atra* (Corda) D. Hawksw., Fungal Diversity 69: 37 (2014).

STUDIED MATERIAL: Acatlan, Acatlan Volcano, 19°30'47"N 96°56'31"W, 1814 m asl, on dead branch, coll. R.M. Arias, 18/09/2011, XAL-CB2258.

*Kramasamuha sibika* Subram. & Vittal, Can. J. Bot. 51: 1127-1131 (1973).

REFERENCE: Heredia & Reyes 1999.

*Lambdasporium viridense* Nawawi, Mycotaxon 24: 221 (1985).

REFERENCE: Delgado et al. 2006.

*Lauriomyces bellulus* Crous & M.J. Wingf., Sydowia 46(2): 198 (1994).

REFERENCE: Arias et al. 2015.

*Lauriomyces heliocephalus* (V. Rao & de Hoog) R.F. Castañeda & W.B. Kendr., University of Waterloo Biology Series 32: 26 (1990).

REFERENCE: Arias et al. 2010.

*Lauriomyces sakaeratensis* Somrith., Kosol & E.B.G. Jones, Nova Hedwigia 82(1-2): 210 (2006).

REFERENCE: Arias et al. 2015.

*Listeromyces insignis* Penz. & Sacc., Malpighia 15(7-9): 259 (1902).

REFERENCE: Arias et al. 2015.

*Lobatopedis kirkii* R.M. Arias, Heredia & R.F. Castañeda, Nova Hedwigia 98(1-2): 32 (2014).

REFERENCE: Heredia et al. 2014.

*Manoharachariella lignicola* Bagyan., N.K. Rao & Kunwar, Mycotaxon 109: 302 (2009).

REFERENCE: Arias et al. 2015.

*Melanocephala australiensis* (G.W. Beaton & M.B. Ellis) S. Hughes, N.Z. JI Bot. 17(2): 169 (1979).

REFERENCE: Arias et al. 2010.

§ *Melanocephala triseptata* (Shearer, J.L. Crane & M.A. Mill.) S. Hughes, N.Z. JI Bot. 17(2): 171 (1979).

STUDIED MATERIAL: Banderilla, La Martinica, 19°35'17"N 96°57'62"W, 1580 m asl, on wood, coll. R.M. Arias, 06/06/2011, XAL-CB2138.

*Melanographium selenioides* (Sacc. & Paol.) M.B. Ellis, Mycol. Pap. 93: 14 (1963).

REFERENCE: Delgado et al. 2006.

*Memnoniella dichroa* (Grove) L. Lombard & Crous, Persoonia 36: 196 (2016).

REFERENCE: Mena-Portales et al. 2009.

*Menisporopsis novae-zelandiae* S. Hughes & W.B. Kendr., N.Z. J Bot. 6: 369 (1968).

REFERENCE: Arias et al. 2010.

*Menisporopsis pirozynskii* Varghese & V.G. Rao, Bot. Notiser 131: 215 (1978).

REFERENCE: Heredia et al. 2000b.

*Menisporopsis theobromae* S. Hughes, Mycol. Pap. 48: 59 (1952).

REFERENCE: Heredia et al. 1994.

*Metulocladosporiella musae* (E.W. Mason) Crous, Schroers, J.Z. Groenew., U. Braun & K. Schub., Mycol. Res. 110(3): 264-275 (2006).

REFERENCE: Arias et al. 2010.

*Minimelanolocus curvisporus* Heredia, R.M. Arias & M. Reyes, Cryptog. Mycol. 22(1): 10 (2001).

REFERENCE: Castañeda-Ruiz et al. 2001.

*Minimelanolocus limpidus* Heredia, R.M. Arias & R.F. Castañeda, Nova Hedwigia 98(1-2): 35 (2014).

REFERENCE: Heredia et al. 2014.

\*§ *Minimelanolocus olivaceus* R.F. Castañeda & Guarro, Mycotaxon 85: 232 (2003).

STUDIED MATERIAL: San Andrés Tlalnahuayocan, Agüita Fría, 19°31'15"N 96°59'27"W, 1503 m asl, on branch of *Bambusa* sp., coll. G. Heredia, 07/02/2010, XAL-CB1849.

\*§ *Minimelanolocus rousseianus* (Mont.) R.F. Castañeda & Heredia, Cryptog. Mycol. 22(1): 10 (2001).

STUDIED MATERIAL: San Andrés Tlalnahuayocan, Agüita Fría, 19°31'15"N 96°59'27"W, 1503 m asl, on wood, coll. G. Heredia, 07/02/2010, XAL-CB1850.

*Miyoshiella triseptata* (Shoemaker & G.P. White) Réblová, Mycotaxon 71: 33 (1999).

REFERENCE: Heredia et al. 2004. Identified as *Sporidesmium adscendens* Berk., Ann. nat. Hist., Mag. Zool. Bot. Geol. 4: 291 (1840).

\*§ *Mirandina corticola* G. Arnaud ex Matsush., Icon. microfung. Matsush. lect. (Kobe): 96 (1975).

STUDIED MATERIAL: San Andrés Tlanelhuayocan, Agüita Fría, 19°31'15"N 96°59'27"W, 1503 m asl, on bark of *Platanus* sp., coll. G. Heredia, 07/02/2010, XAL-CB1854. Acajete, Mesa de la Yerba, 19°33'40"N 97°01'04"W, 1933 m asl, on dead branch, 05/12/210, coll. G. Heredia, XAL-CB1910. San Andrés Tuxtla, San Martín Tuxtla Volcano, 18°32'06"N 95°08'28"W, 1075 m asl, on decaying leaves of *Quercus* sp., coll. G. Heredia, 05/01/2011, XAL-CB2040.

\*§ *Mirandina flagelliformis* Matsush., Matsush. Mycol. Mem. 5: 19 (1987).  
STUDIED MATERIAL: San Andrés Tlanelhuayocan, Agüita Fría, 19°31'15"N 96°59'27"W, 1503 m asl, on dead branch, coll. G. Heredia, 07/02/2010, XAL-CB1855.

\*§ *Mirandina fragilis* R.F. Castañeda & W.B. Kendr., Univ. Waterloo Biol. Ser. 35: 73 (1991).  
STUDIED MATERIAL: San Andrés Tlanelhuayocan, Agüita Fría, 19°31'15"N 96°59'27"W, 1503 m asl, on decaying leaves, coll. G. Heredia, 07/02/2010, XAL-CB1856.

*Monilochaetes laeensis* (Matsush.) Réblová, W. Gams & Seifert, Studies in Mycology 68: 173 (2010).  
REFERENCE: Heredia et al. 2004.

\*§ *Monodictys abuensis* (Chouhan & Panwar) V. Rao & de Hoog, Stud. Mycol. 28: 26 (1986).  
STUDIED MATERIAL: Huatusco, Las Cañadas, 19°11'23"N 96°59'11"W, 1295 m asl, on wood, coll. R.M. Arias, 21/03/2011, XAL-CB2089. Acatlán, Acatlán Volcano, 19°30'47"N 96°56'31"W, 1814 m asl, on wood, coll. R.M. Arias, 18/09/2011, XAL-CB2244.

\*§ *Monodictys capensis* R.C. Sinclair, Boshoff & Eicker, Mycotaxon 59: 359 (1996).  
STUDIED MATERIAL: San Andrés Tuxtla, San Martín Tuxtla Volcano, 18°32'06"N 95°08'28"W, 1075 m asl, on dead branch, coll. G. Heredia, 05/01/2011, XAL-CB1959.

\*§ *Monodictys cerebriformis* G.Z. Zhao & T.Y. Zhang, Mycosystema 23(3): 325 (2004). **Fig. 16**  
STUDIED MATERIAL: Soteapan, Santa Marta Volcano, 18°20'56"N 94°53'20"W, 1334 m asl, on dead branch, coll. G. Heredia, 05/08/2011, XAL-CB2188, XAL-CB2189, XAL-CB2190, XAL-CB2191.

*Monodictys glauca* (Cooke & Harkn.) S. Hughes, Can. J. Bot. 36: 785 (1958).

REFERENCE: Heredia et al. 2006.

§ *Monodictys lepraria* (Berk.) M.B. Ellis, More Dematiaceous

Hyphomycetes (Kew): 44 (1976).

STUDIED MATERIAL: Soteapan, Santa Marta Volcano, 18°20'56"N 94°53'20"W, 1334 m asl, on bark, on dead branch, coll. G. Heredia, 05/08/2011, XAL-CB2192, XAL-CB2209.

\*§ *Monodictys melanopa* (Ach.) M.B. Ellis, More Dematiaceous

Hyphomycetes (Kew): 43 (1976).

**Fig. 17**

STUDIED MATERIAL: Acajete, Mesa de la Yerba, 19°33'40"N 97°01'04"W, 1933 m asl, on wood, 05/12/2010, coll. G. Heredia, XAL-CB1884. Xalapa, Francisco Javier Clavijero Park, 19°30'47"N 96°56'31"W, 1340 m asl, on dead branch, fern rachis, coll. R.M. Arias, 05/09/2011, XAL-CB2269, XAL-CB2273, XAL-CB2296.

\*§ *Monodictys nigrioglobulosa* G.Z. Zhao & T.Y. Zhang, Mycosystema

26(3): 328 (2007).

STUDIED MATERIAL: San Andrés Tuxtla, San Martín Tuxtla Volcano, 18°32'06"N 95°08'28"W, 1075 m asl, on palm rachis, coll. G. Heredia, 05/01/2011, XAL-CB1960, XAL-CB1961. Soteapan, Santa Marta Volcano, 18°20'56"N 94°53'20"W, 1334 m asl, on dead branch, coll. G. Heredia, 05/08/2011, XAL-CB2193.

\*§ *Monodictys nitens* (Schwein.) S. Hughes, Can. J. Bot. 36: 786 (1958).

**Fig. 18**

STUDIED MATERIAL: San Andrés Tuxtla, San Martín Tuxtla Volcano, 18°32'06"N 95°08'28"W, 1075 m asl, on dead branch, coll. G. Heredia, 05/01/2011, XAL-CB1962, XAL-CB2022.

\*§ *Monodictys peruviana* Matsush., Matsush. Mycol. Mem. 7: 57 (1993).

STUDIED MATERIAL: Banderilla, La Martinica, 19°35'17"N 96°57'62"W, 1580 m asl, on bark, on decaying leaves of *Quercus* sp., coll. R. M. Arias, 06/06/2011, XAL-CB2140, XAL-CB2152.

\*§ *Monodictys putredinis* (Wallr.) S. Hughes, Can. J. Bot. 36: 785 (1958).

STUDIED MATERIAL: San Andrés Tuxtla, San Martín Tuxtla Volcano, 18°32'06"N 95°08'28"W, 1075 m asl, on fern rachis, coll. G. Heredia, 05/01/2011, XAL-CB1963. Huatusco, Las Cañadas, 19°11'23"N 96°59'11"W, 1295 m asl, fern rachis, coll. R.M. Arias, 21/03/2011, XAL-CB2090. Soteapan, Santa Marta Volcano, 18°20'56"N 94°53'20"W, 1334 m

asl, on bark, coll. G. Heredia, 05/08/2011, XAL-CB2194, XAL-CB2195, XAL-CB2196.

\*§ *Monodictys sessilis* Hol.-Jech., Česká Mykol. 40(3): 151 (1986).

STUDIED MATERIAL: San Andrés Tuxtla, San Martín Tuxtla Volcano, 18°32'06"N 95°08'28"W, 1075 m asl, on dead branch, coll. G. Heredia, 05/01/2011, XAL-CB1964. Banderilla, La Martinica, 19°35'17"N 96°57'62"W, 1580 m asl, on bark, coll. R.M. Arias, 06/06/2011, XAL-CB2141.

\*§ *Monodictys shigatsensis* Y.M. Wu & T.Y. Zhang, Mycotaxon 109: 266 (2009). **Fig. 19**

STUDIED MATERIAL: San Andrés Tuxtla, San Martín Tuxtla Volcano, 18°32'06"N 95°08'28"W, 1075 m asl, on fern rachis, on dead branch, coll. G. Heredia, 05/01/2011, XAL-CB1965, XAL-CB2000, XAL-CB2019.

*Monodictys spinosa* Mercado, Heredia & J. Mena, Mycotaxon 55: 498 (1995).  
REFERENCE: Heredia et al. 1995.

*Mycoleptodiscus brasiliensis* B. Sutton & Hodges, Nova Hedwigia 27(3-4): 694 (1976).

*Neocordana musae* (Zimm.) M. Hern.-Rest. & Crous, Phytotaxa 205(4): 234 (2015).

REFERENCE: Heredia et al. 2004.

§ *Neopodoconis ampullacea* (Petch) Rifai, Reinwardtia 12(4): 278 (2008).

STUDIED MATERIAL: San Andrés Tlalnahuayocan, Agüita Fria, 19°31'15"N 96°59'27"W, 1503 m asl, on wood, coll. G. Heredia, 07/02/2010, XAL-CB1830. Coatepec, Rancho Guadalupe, 19°30'00"N 97°09'00"W, 1300 m asl, on bejuco, coll. J. Mena, 13/06/1995, XAL-CB395-3. Coatepec, Rancho Guadalupe, 19°30'00"N 97°09'00"W, 1300 m asl, on bejuco, coll. G. Rosas, 13/06/1996, XAL-CB400. Ixhuacan de los Reyes, 19°21'22"N 97°07'01"W, 1754 m asl, on dead branch, coll. A. Mercado, 05/03/1996, XAL-CB533.

*Paliphora aurea* Sivan. & B. Sutton, Trans. Br. Mycol. Soc. 85(2): 251 (1985).

REFERENCE: Arias et al. 2015.



*Paliphora intermedia* Alcorn, Mycotaxon 59: 145 (1996).

REFERENCE: Heredia et al. 2000b.

\*§ *Pappimyces hastatus* B. Sutton & Hodges, Nova Hedwigia 26(2-3): 528 (1975).

STUDIED MATERIAL: San Andrés Tlanelhuayocan, Agüita Fría, 19°31'15"N 96°59'27"W, 1503 m asl, on decaying leaves, coll. G. Heredia, 07/02/2010, XAL-CB1857.

*Paraceratocladium silvestre* R.F. Castañeda, Fungi Cubenses II (La Habana): 9 (1987).

REFERENCE: Heredia et al. 2004.

\*§ *Parasymptodiella laxa* (Subram. & Vittal) Ponnappa, Trans. Br. Mycol. Soc. 64(2): 344 (1975).

STUDIED MATERIAL: San Andrés Tlanelhuayocan, Agüita Fría, 19°31'15"N 96°59'27"W, 1503 m asl, on branch of *Bambusa* sp., coll. G. Heredia, 07/02/2010, XAL-CB1858. San Andrés Tuxtla, San Martín Tuxtla Volcano, 18°32'06"N 95°08'28"W, 1075 m asl, on decaying leaves, coll. G. Heredia, 05/01/2011, XAL-CB2041.

\*§ *Penidiella cubensis* (R.F. Castañeda) U. Braun, Crous & R.F. Castañeda, Stud. Mycol. 58: 19 (2007). **Fig. 23**

STUDIED MATERIAL: San Andrés Tlanelhuayocan, Agüita Fría, 19°31'15"N 96°59'27"W, 1503 m asl, on bark of *Platanus* sp., coll. G. Heredia, 07/02/2010, XAL-CB1859, XAL-CB1860.

§ *Periconia byssoides* Pers., Syn. meth. fung. (Göttingen) 1: 18 (1801).

STUDIED MATERIAL: San Andrés Tlanelhuayocan, Agüita Fría, 19°31'15"N 96°59'27"W, 1503 m asl, on dead branch, coll. G. Heredia, 07/02/2010, XAL-CB1862, XAL-CB1863. Cosautlán de Carbajal, 19°20'00"N 96°59'00"W, 1172 m asl, on dead branch, coll. J. Mena, 06/07/1995, XAL-CB479, XAL-CB480. Cosautlán de Carbajal, 19°20'00"N 96°59'00"W, 1172 m asl, on dead branch, coll. G. Rosas, 06/07/1995, XAL-CB491. Cosautlán de Carbajal, 19°20'00"N 96°59'00"W, 1172 m asl, on dead branch, coll. G. Olvera, 11/03/1996 XAL-CB617. Cosautlán de Carbajal, 19°20'00"N 96°59'00"W, 1172 m asl, on dead branch, coll. G. Rosas, 06/07/1995, XAL-CB491. Cosautlán de Carbajal, 19°20'00"N 96°59'00"W, 1172 m asl, on dead branch, coll. A. Mercado, 11/03/1996 XAL-CB642, XAL-CB645. Coatepec, La Pitahaya, 19°49'88"N 96°94'44"W, 1300 m asl, on dead branch, coll. G. Rosas, 18/11/1995, XAL-CB503, XAL-CB519. Ixhuacán de los Reyes, 19°21'22"N 97°07'01"W, 1754 m asl, on dead branch, coll. G. Olvera, 05/03/1996, XAL-CB524, XAL-CB545, XAL-CB554, XAL-CB556. Ixhuacán de los Reyes, 19°21'22"N 97°07'01"W, 1754 m asl, on dead branch, coll. A. Mercado, 05/03/1996, XAL-CB525, XAL-CB575, XAL-CB597.

*Periconia cookei* E.W. Mason & M.B. Ellis, Mycol. Pap. 56: 72 (1953).  
REFERENCE: Arias et al. 2010.

*Periconia lateralis* Ellis & Everh., J. Mycol. 2(9): 104 (1886).  
REFERENCE: Arias et al. 2010.

*Periconia shyamala* A.K. Roy, Indian Phytopath. 18: 332 (1965).  
REFERENCE: Heredia et al. 2006.

\*§ *Phaeomonilia corticola* (R.F. Castañeda) R.F. Castañeda, Saikawa & M. Stadler, Mycotaxon 100: 332 (2007).  
STUDIED MATERIAL: San Andrés Tlalnelhuayocan, Agüita Fría, 19°31'15"N 96°59'27"W, 1503 m asl, on dead branch, coll. G. Heredia, 07/02/2010, XAL-CB1866.

*Phalangispora nawawii* Kuthub., Trans. Br. Mycol. Soc. 89(3): 419 (1987).  
REFERENCE: Heredia et al. 2000b.

*Phialocephala mexicana* Onofri & Zucconi, Mycotaxon 20(1): 185-195 (1984).  
REFERENCE: Heredia & Reyes 1999.

*Phragmocephala atra* (Berk. & Broome) E.W. Mason & S. Hughes, Naturalist: 97 (1951).  
REFERENCE: Mercado-Sierra & Heredia 1994.

\*§ *Phragmocephala glanduliformis* (Höhn.) S. Hughes, Can. J. Bot. 33: 267 (1955).  
STUDIED MATERIAL: Acatlan, Acatlan Volcano, 19°30'47"N 96°56'31"W, 1814 m asl, on trunk, coll. R.M. Arias, 18/09/2011, XAL-CB2256.

*Physalidiella elegans* (Mosca) Rulamort, Bull. Soc. bot. Centre-Ouest, Nouv. sér. 21: 512 (1990).  
REFERENCE: Arias et al. 2010.

*Physalidiella matsushimae* (R.F. Castañeda & W.B. Kendr.) M. Morelet, Ann. Soc. Sci. Nat. Arch. Toulon et du Var 47(2): 91 (1995).  
REFERENCE: Heredia et al. 2004.

*Piricauda longispora* Mercado, Gené & Guarro, Mycotaxon 64: 9 (1997).  
REFERENCE: Arias et al. 2015.

*Piricauda mexicana* Mercado, Heredia & J. Mena, Mycotaxon 63: 159 (1997).

REFERENCE: Mercado-Sierra et al. 1997.

§ *Piricaudilium lobatum* Hol.-Jech., Česká Mykol. 42(4): 200 (1988).

STUDIED MATERIAL: San Andrés Tlalnahuayocan, Agüita Fria, 19°31'15"N 96°59'27"W, 1503 m asl, on decaying leaves, coll. G. Heredia, 07/02/2010, XAL-CB1888.

*Pithomyces sumiderensis* Hol.-Jech., Česká Mykol. 40 (3): 154 (1986).

REFERENCE: Arias et al. 2015.

*Pleurothecium recurvatum* (Morgan) Höhn., Centbl. Bakt. ParasitKde, Abt. II 60: 26 (1923).

REFERENCE: Mercado-Sierra & Heredia 1994.

*Polyschema cubense* Mercado & J. Mena, Acta Bot. Hung. 37 (1-4): 70 (1992).

REFERENCE: Arias et al. 2015.

*Pseudoacrodictys deightonii* (M.B. Ellis) W.A. Baker & Morgan-Jones, Mycotaxon 85: 380 (2003).

REFERENCE: Delgado et al. 2006.

*Pseudobeltrania havanensis* Hol.-Jech., Česká Mykologie 41 (1): 34 (1987).

REFERENCE: Heredia & Reyes, 1999.

*Pseudobeltrania macrospora* Heredia, R.M. Arias, M. Reyes & R.F.

Castañeda, Fungal Diversity 11: 103 (2002).

REFERENCE: Heredia et al. 2002.

*Pseudocercospora trichophila* (F. Stevens) Deighton, Mycol. Pap. 140: 106 (1976).

REFERENCE: Arias et al. 2000.

*Pseudopithomyces chartarum* (Berk. & M.A. Curtis) J.F. Li, Ariyaw. & K.D. Hyde, Fungal Diversity 75: 66 (2015).

REFERENCE: Heredia et al. 1995.

*Pseudopithomyces maydicus* (Sacc.) J.F. Li, Ariyaw. & K.D. Hyde, Fungal Diversity 75: 69 (2015).

REFERENCE: Heredia et al. 1995.

*Pseudotorula sundara* (Subram.) J.L. Crane & A. Mill., IMA Fungus 7(1): 42 (2016).

REFERENCE: Mercado-Sierra & Heredia 1994.

*Pyricularia fusispora* (Matsush.) Zucconi, Onofri & Persiani, Micol. Ital. 13(2): 9 (1984).

REFERENCE: Heredia et al. 1995.

*Redbia inflata* Heredia, R.M. Arias & R.F. Castañeda, Mycotaxon 125: 230 (2013).

REFERENCE: Castañeda-Ruiz et al. 2013.

\*§ *Repetophragma inflatum* (Berk. & Ravenel) W.P. Wu, Fungal Diversity Res. Ser. 15: 82 (2005). **Fig. 25**

STUDIED MATERIAL: San Andrés Tlalnelhuayocan, Agüita Fria, 19°31'15"N 96°59'27"W, 1503 m asl, on dead branch, coll. G. Heredia, 07/02/2010, XAL-CB1872.

*Repetophragma paracambrense* R.F. Castañeda, Heredia & McKenzie, Mycosphere 2(3): 274 (2011).

REFERENCE: Castañeda-Ruiz et al. 2011.

*Repetophragma subulatum* (Cooke & Ellis) Subram. Proc. Indian natn Sci. Acad., Part B. Biol. Sci. 58(4): 185 (1992).

REFERENCE: Heredia et al. 2006.

*Repetophragma filiferum* (Piroz.) R.F. Castañeda, Gusmão & Heredia, Mycotaxon 95: 269 (2006).

REFERENCE: Heredia et al. 1995.

*Repetophragma goidanichii* (Rambelli) W.P. Wu, Fungal Diversity Res. Ser. 15: 80 (2005).

REFERENCE: Heredia et al. 2006.

*Rhexodenticula cylindrospora* (R.F. Castañeda, Saikawa & Hennebert) W.A. Baker & Morgan-Jones, Mycotaxon 79: 363 (2001).

REFERENCE: Heredia & Reyes 1999.

*Rhinocladiella selenoides* (de Hoog) Onofri & Castagn., Mycotaxon 18(2): 342 (1983).

REFERENCE: Delgado et al. 2006.

\*§ *Rhinotrichella elegans* R.F. Castañeda & Crous, S. Afr. J. Bot. 62(2): 97 (1996).

STUDIED MATERIAL: San Andrés Tlalnelhuayocan, Agüita Fría, 19°31'15"N 96°59'27"W, 1503 m asl, on branch of *Bambusa* sp., coll. G. Heredia, 07/02/2010, XAL-CB1873.

*Sadasivania girisa* Subram., J. Indian bot. Soc. 36: 66 (1957).

REFERENCE: Heredia et al. 2004.

*Sarcinella glycosmidis* Kamal & Singh, Sydowia 33: 152-156 (1980).

REFERENCE: Heredia & Reyes 1999.

\*§ *Scolecobasidium constrictum* E.V. Abbott, Mycologia 19(1): 30 (1927).

STUDIED MATERIAL: Huatusco, Las Cañadas, 19°11'23"N 96°59'11"W, 1295 m asl, on decaying leaves of *Quercus* sp., coll. R.M. Arias, 21/03/2011, XAL-CB2096.

*Scolecobasidium humicola* Barron & Bush, Can. J. Bot. 40: 83 (1962).

REFERENCE: Heredia & Reyes 1999.

\*§ *Selenodriella intermedia* R.F. Castañeda & W.B. Kendr., Univ. Waterloo Biol. Ser. 33: 34 (1990).

STUDIED MATERIAL: Acajete, Mesa de la Yerba, 19°33'40"N 97°01'04"W, 1933 m asl, on decaying leaves, coll. G. Heredia, 05/12/2010, XAL-CB1914.

*Selenosporella conglutinata* R.F. Castañeda, Deuteromycotina de Cuba, Hyphomycetes, III: 31 (1985).

REFERENCE: Arias et al. 2015.

*Selenosporella curvispora* G. Arnaud ex MacGarvie, Scientific Proc. R. Dublin Soc., Ser. B 2(no. 16): 153 (1969).

REFERENCE: Heredia et al. 1995.

*Selenosporella perramosa* (W.B. Kendr. & R.F. Castañeda) R.F. Castañeda, Mycotaxon 109: 69 (2009).

REFERENCE: Heredia et al. 2006.

\*§ *Solicorynespora pseudolmediae* (R.F. Castañeda) R.F. Castañeda & W.B. Kendr., Univ. Waterloo Biol. Ser. 33: 43 (1990).

STUDIED MATERIAL: Huatusco, Las Cañadas, 19°11'23"N 96°59'11"W, 1295 m asl, on submerged leaves, coll. R.M. Arias, 21/03/2011, XAL-CB2097, XAL-CB2098.

*Solosympodiella clavata* Matsush., Microfungi of the Solomon Islands and Papua-New Guinea (Osaka): 55 (1971).  
REFERENCE: Heredia & Reyes 1999.

*Spadicoides atra* (Corda) S. Hughes, Can. J. Bot. 36: 805 (1958).  
REFERENCE: Heredia et al. 2004.

*Spadicoides obovata* (Cooke & Ellis) S. Hughes, Can. J. Bot. 36: 806 (1958).  
REFERENCE: Heredia et al. 2004.

\*§ *Spadicoides subsphaerica* D.W. Li, Mycotaxon 111: 258 (2010).  
STUDIED MATERIAL: San Andrés Tlalnelhuayocan, Agüita Fria, 19°31'15"N 96°59'27"W, 1503 m asl, on decaying leaves, coll. G. Heredia, 07/02/2010, XAL-CB1876.

*Spegazzinia deightonii* (S. Hughes) Subram., J. Indian bot. Soc. 35: 78 (1956).  
REFERENCE: Heredia et al. 1995.

*Spegazzinia tessarthra* (Berk. & M.A. Curtis) Sacc., Syll. fung. (Abellini) 4: 758 (1886).  
REFERENCE: Heredia 1994.

*Speiropsis scopiformis* Kuthub. & Nawawi, Trans. Br. Mycol. Soc. 89: 584-587 (1987).  
REFERENCE: Heredia et al. 2000a.

\*§ *Spermosporella flagelliformis* K. Matsush. & Matsush., Matsush. Mycol. Mem. 8: 51 (1995).  
STUDIED MATERIAL: San Andrés Tlalnelhuayocan, Agüita Fria, 19°31'15"N 96°59'27"W, 1503 m asl, on bark of *Platanus* sp., coll. G. Heredia, 07/02/2010, XAL-CB1877.

*Sporendocladia bactrospora* (W.B. Kendr.) M.J. Wingf., 89(4): 515 (1987).  
REFERENCE: Heredia & Reyes 1999.

*Sporendocladia ivoriensis* (Zucconi & Onofri) M.J. Wingf., Trans. Br. Mycol. Soc. 89(4): 517 (1987).  
REFERENCE: Heredia et al. 2004.

*Sporidesmiella hyalosperma* (Corda) P.M. Kirk, Trans. Br. Mycol. Soc. 79 (3): 481 (1982).  
REFERENCE: Heredia & Reyes 1999.

\*§ *Sporidesmiella parva* (M.B. Ellis) P.M. Kirk, Trans. Br. Mycol. Soc. 79(3): 486 (1982).

STUDIED MATERIAL: Soteapan, Santa Marta Volcano, 18°20'56"N 94°53'20"W, 1334 m asl, on decaying leaves of *Quercus* sp., coll. G. Heredia, 05/08/2011, XAL-CB2210.

*Sporidesmium altum* (Preuss) M.B. Ellis, Mycol. Pap. 70: 46 (1958).

REFERENCE: Heredia et al. 2004.

*Sporidesmium anglicum* (Grove) Ellis M.B., Mycol. Pap., 70: 60-61 (1958).

REFERENCE: Heredia et al. 2006.

\*§ *Sporidesmium australiense* M.B. Ellis, More Dematiaceous

Hyphomycetes (Kew): 94 (1976).

**Fig. 26**

STUDIED MATERIAL: San Andrés Tlalnelhuayocan, Agüita Fría, 19°31'15"N 96°59'27"W, 1503 m asl, on dead branch, coll. G. Heredia, 07/02/2010, XAL-CB1879, XAL-CB1880.

*Sporidesmium cookei* (S. Hughes) M.B. Ellis, Mycol. Pap. 70: 48 (1958).

REFERENCE: Heredia et al. 2006.

*Sporidesmium dissolvens* Hol.-Jech., Mercado & J. Mena, Česká Mykol.

40(3): 156 (1986).

REFERENCE: Heredia et al. 2006.

\*§ *Sporidesmium nanii* W.P. Wu, Fungal Diversity Res. Ser. 15: 48 (2005).

**Fig. 27**

STUDIED MATERIAL: Banderilla, La Martinica, 19°35'17"N 96°57'62"W, 1580 m asl, on decaying leaves, coll. R.M. Arias, 06/06/2011, XAL-CB2117.

*Sporidesmium rubi* M. B. Ellis, Mycol. Pap. 70: 64-65 (1958).

REFERENCE: Heredia et al. 2006.

\*§ *Sporidesmium tengii* W.P. Wu, Fungal Diversity Res. Ser. 15: 70 (2005).  
STUDIED MATERIAL: Xalapa, Francisco Javier Clavijero Park, 19°30'47"N 96°56'31"W, 1340 m asl, on dead branch, coll. R.M. Arias, 05/09/2011, XAL-CB2272.

§ *Sporidesmium tropicale* M.B. Ellis, Mycol. Pap. 70: 58 (1958).  
STUDIED MATERIAL: San Andrés Tuxtla, San Martín Tuxtla Volcano, 18°32'06"N 95°08'28"W, 1075 m asl, on dead branch, coll. G. Heredia, 05/01/2011, XAL-CB1983. Banderilla, La Martinica, 19°35'17"N 96°57'62"W, 1580 m asl, on bark, coll. R.M. Arias, 06/06/2011, XAL-CB2118. Coatepec, Rancho Guadalupe, 19°30'00"N 97°09'00"W, 1300 m asl, on dead branch, coll. J. Mena, 10/06/1995, XAL-CB356-1. Coatepec, Rancho Guadalupe, 19°30'00"N 97°09'00"W, 1300 m asl, on dead branch, coll. G. Rosas, 13/06/1995, XAL-CB404-1.

\*§ *Sporidesmium vagum* Nees & T. Nees, Nova Acta Phys.-Med. Acad. Caes. Leop.-Carol. Nat. Cur. 2: 231 (1818). **Fig. 28**  
STUDIED MATERIAL: Banderilla, La Martinica, 19°35'17"N 96°57'62"W, 1580 m asl, on trunk, coll. R.M. Arias, 06/06/2011, XAL-CB2134. Coatepec, Rancho Guadalupe, 19°30'00"N 97°09'00"W, 1300 m asl, on bejuco, coll. J. Mena, 10/06/1995, XAL-CB358-1. Coatepec, Rancho Guadalupe, 19°30'00"N 97°09'00"W, 1300 m asl, on dead branch, coll. J. Mena, 13/06/1995, XAL-CB408-1.

*Sporoschisma hemipsilum* (Berk. & Broome) Zelski, A.N. Mill. & Shearer [as 'hemipsila'], in Zelski, Balto, Do, Raja, Miller & Shearer, IMA Fungus 5: 433 (2014).  
REFERENCE: Heredia et al. 2004.

§ *Sporoschisma nigroseptatum* D. Rao & P. Rag. Rao, Mycopath. Mycol. appl. 24(1): 82 (1964).  
STUDIED MATERIAL: San Andrés Tlalnahuayocan, Agüita Fría, 19°31'15"N 96°59'27"W, 1503 m asl, on wood, coll. G. Heredia, 07/02/2010, XAL-CB1881, XAL-CB2047. San Andrés Tuxtla, San Martín Tuxtla Volcano, 18°32'06"N 95°08'28"W, 1075 m asl, on dead branch, coll. G. Heredia, 05/01/2011, XAL-CB1984. Xalapa, Francisco Javier Clavijero Park, 19°30'47"N 96°56'31"W, 1340 m asl, on decaying leaves, coll. G. Heredia y A. Mercado, 30/07/1993, XAL-CB032. Ixhuacán de los Reyes, 19°21'22"N 97°07'01"W, 1754 m asl, on dead branch, coll. A. Mercado, 05/03/1996, XAL-CB532-1.



*Sporoschismopsis moravica* Hol.-Jech. & Hennebert, Bull. Jard. Bot. natn. Belg. 42(4): 387 (1972).

REFERENCE: Arias et al. 2015.

*Stachybotrys kampalensis* Hansf., Proc. Linn. Soc. London 155: 45 (1943).

REFERENCE: Mena-Portales et al. 2009.

*Stachybotrys parvisporus* S. Hughes [as 'parvispora'], Mycol. Pap. 48: 74 (1952).

REFERENCE: Mena-Portales et al. 2009.

*Stachylidium bicolor* Link, Mag. Gesell. naturf. Freunde, Berlin 3(1-2): 15 (1809).

REFERENCE: Heredia et al. 1994.

\*§ *Stanjehughesia nigroascus* (B. Sutton) Subram., Proc. Indian natn Sci. Acad., Part B. Biol. Sci. 58(4): 184 (1992). **Fig. 29**

STUDIED MATERIAL: Acatlán, Acatlán Volcano, 19°30'47"N 96°56'31"W, 1814 m asl, on bark, coll. R.M. Arias, 18/09/2011, XAL-CB2252.

*Strossmayeria atriseda* (Saut.) Iturr., Iturriaga & Korf, Mycotaxon 36(2): 404 (1990).

REFERENCE: Heredia et al. 2004. Identified as *Pseudospiropes nodosus* (Wallr.) M.B. Ellis, Dematiaceous Hyphomycetes (Kew): 258 (1971).

*Strossmayeria bakeriana* (Henn.) Iturr., Iturriaga & Korf, Mycotaxon 36(2): 408 (1990).

REFERENCE: Arias et al. 2010. Identified as *Pseudospiropes simplex* (Nees) M.B. Ellis, Dematiaceous Hyphomycetes (Kew): 260 (1971).

\*§ *Strossmayeria josserandii* (Grélet) Bertault, Revue Mycol., Paris 35(1-2): 136 (1970).

Asexual form: *Pseudospiropes josserandii* (Bertault) Iturr., Mycotaxon 36(2): 436 (1990).

STUDIED MATERIAL: Acatlán, Acatlán Volcano, 19°30'47"N 96°56'31"W, 1814 m asl, on dead branch, coll. R.M. Arias, 18/09/2011, XAL-CB2246.

*Subulispora longirostrata* Nawawi & Kuthub., Mycotaxon 30: 459 (1987).

REFERENCE: Heredia et al. 2004).

*Subulispora procurvata* Tubaki, Trans. Mycol. Soc. Japan 12(1): 20 (1971).

REFERENCE: Heredia 1994.

*Sympodiella multiseptata* Tubaki, Trans. mycol. Soc. Jap. 12: 24 (1971).  
REFERENCE: Heredia & Reyes 1999.

*Synnemacrodectys stilboidea* (J. Mena & Mercado) W.A. Baker & Morgan-Jones, Mycotaxon 110: 107 (2009).  
REFERENCE: Heredia et al. 2000a.

\*§ *Teratosperma sclerotivorum* (Uecker, W.A. Ayers & P.B. Adams) S. Hughes, N.Z. J. Bot. 17(2): 178 (1979). **Fig. 30**  
STUDIED MATERIAL: Acatlán, Acatlán Volcano, 19°30'47"N 96°56'31"W, 1814 m asl, on wood, coll. R.M. Arias, 18/09/2011, XAL-CB2238.

*Teratosperma singulare* Syd. & P. Syd., Annl. Mycol. 7(2): 172 (1909).  
REFERENCE: Heredia et al. 1995.

*Tetracoccusporium aerium* P.C. Misra & P. Srivast., Mycotaxon 4(1): 276 (1976).  
REFERENCE: Heredia et al. 1995.

*Tetraploa aristata* Berk. & Broome, Ann. Mag. nat. Hist., Ser. 2 5: 459 (1850).  
REFERENCE: Heredia et al. 1995.

*Tetraploa ellisii* Cooke, Grevillea 8(no. 45): 12 (1879).  
REFERENCE: Mercado-Sierra & Heredia 1994.

*Tretospeira ugandensis* (Hansf.) Piroz., Mycol. Pap. 129: 58 (1972).  
REFERENCE: Delgado et al. 2006.

*Trichobotrys effusa* (Berk. & Broome) Petch, Ann. R. bot. Gdns Peradeniya 9: 169 (1924).  
REFERENCE: Delgado et al. 2006.

\*§ *Trichocladium asperum* Harz, Bull. Soc. Imp. Nat. Moscou 44(1): 125 (1871). **Fig. 20**  
STUDIED MATERIAL: Acatlán, Acatlán Volcano, 19°30'47"N 96°56'31"W, 1814 m asl, on bark, coll. G. Heredia, 07/02/2010, XAL-CB2253.

\*§ *Trichocladium macrosporum* P.M. Kirk, Trans. Br. Mycol. Soc. 76(1): 84 (1981).

STUDIED MATERIAL: Banderilla, La Martinica, 19°35'17"N 96°57'62"W, 1580 m asl, on bark, coll. R.M. Arias, 06/06/2011, XAL-CB2119.

\*§ *Trichoconis caudate* (Appel & Strunk) Clem, Gen. fung. (Minneapolis): 176 (1909).

STUDIED MATERIAL: San Andrés Tlalnelhuayocan, Agüita Fria, 19°31'15"N 96°59'27"W, 1503 m asl, on *Platanus* sp. bark, coll. G. Heredia, 07/02/2010, XAL-CB1889.

\*§ *Trichothecium microvermisporum* R.F. Castañeda, Fungi Cubenses II (La Habana): 11. (1987).

STUDIED MATERIAL: San Andrés Tlalnelhuayocan, Agüita Fria, 19°31'15"N 96°59'27"W, 1503 m asl, on decaying leaves, coll. G. Heredia, 07/02/2010, XAL-CB1890.

*Tripospermum myrti* (Lind) S. Hughes, Mycol. Pap. 46: 18 (1951).

REFERENCE: Heredia et al. 1995.

\*§ *Triposporium elegans* Corda, Icon. fung. (Prague) 1: 16 (1837).

STUDIED MATERIAL: Soteapan, Santa Marta Volcano, 18°20'56"N 94°53'20"W, 1334 m asl, on decaying leaves of *Quercus* sp., coll. G. Heredia, 05/08/2011, XAL-CB2203. Xalapa, Francisco Javier Clavijero Park, 19°30'47"N 96°56'31"W, 1340 m asl, on bark, 27/07/1993, coll. G. Heredia & A. Mercado, XAL-CB046-2.

*Triramulispora gracilis* Matsush., Icon. microfung. Matsush. lect. (Kobe): 158 (1975).

REFERENCE: Heredia et al. 1995.

*Tropospora olivacea* (P. Karst.) K.M. Tsui & Berbee, Mycoscience 51(2): 147 (2010).

REFERENCE: Arias et al. 2000.

*Tubeufia cerea* (Berk. & M.A. Curtis) Höhn., Sber. Akad. Wiss. Wien, Math.-naturw. Kl., Abt. 1 128: 562 (1919).

REFERENCE: Heredia et al. 1995. Identified as *Helicosporium virescens* (Pers.) Silvanesan, Bitunicate Acomyces: 591-592 (1984).

\*§ *Tubeufia paludosa* (P. Crouan & H. Crouan) Rossman, Mycologia 69(2): 383 (1977).

Asexual form: *Helicosporium phragmitis* Höhn., Annl. Mycol. 3(4): 338 (1905).

STUDIED MATERIAL: Huatusco, Las Cañadas, 19°11'23"N 96°59'11"W, 1295 m asl, on submerged leaves, coll. R.M. Arias, 21/03/2011, XAL-CB2082.

*Veracruzomyces obclavatus* Mercado, Guarro, Heredia & J. Mena, Nova Hedwigia 75(3-4): 534 (2002).

REFERENCE: Mercado-Sierra et al. 2002.

§ *Vermiculariopsiella immersa* (Desm.) Bender, Mycologia 24(4): 412 (1932).

STUDIED MATERIAL: San Andrés Tlalnelhuayocan, Agüita Fría, 19°31'15"N 96°59'27"W, 1503 m asl, on leaves of *Bambusa* sp., coll. G. Heredia, 07/02/2010, XAL-CB1891, XAL-CB1892, XAL-CB1893.

*Veronaea coprophila* (Subram. & Lodha) M.B. Ellis, More Dematiaceous Hyphomycetes (Kew): 210 (1976).

REFERENCE: Heredia et al. 1995.

*Virgaria nigra* (Link) Nees, Syst. Pilze (Würzburg) 1: 553 (1817).

REFERENCE: Heredia et al. 2006.

§ *Wiesneriomyces laurinus* (Tassi) P.M. Kirk, Trans. Br. Mycol. Soc. 82(4): 748 (1984).

STUDIED MATERIAL: Xalapa, Francisco Javier Clavijero Park, 19°30'47"N 96°56'31"W, 1340 m asl, on dead branch, coll. R.M. Arias, 05/09/2011, XAL-CB2293. San Andrés Tuxtla, San Martín Tuxtla Volcano, 18°32'06"N 95°08'28"W, 1075 m asl, on dead branch, coll. G. Heredia, 05/01/2011, XAL-CB1987, XAL-CB1995, XAL-CB2031, XAL-CB2035, XAL-CB2038.

*Xenosporium berkeleyi* (M.A. Curtis) Piroz., Mycol. Pap. 105: 27 (1966).

REFERENCE: Mercado-Sierra & Heredia 1994.

*Xenosporium thaxteri* (Linder) Piroz., Mycol. Pap. 105: 30 (1966).

REFERENCE: Heredia et al. 2006.

*Xylocladium claviforme* (J.L. Crane & Dumont) Arx, Proc. K. Ned. Akad. Wet., Ser. C, Biol. Med. Sci. 85(1): 27 (1982).

REFERENCE: Heredia et al. 2004. Identified as *Masoniomyces claviformis* J.L. Crane & Dumont, Can. J. Bot. 53(9): 847 (1975).

*Zanclospora brevispora* S. Hughes & W.B. Kendr., N.Z. J. Bot. 3: 156 (1965).

REFERENCE: Arias et al. 2015.

\*§ *Zanclospora novae-zelandiae* S. Hughes & W.B. Kendr., N.Z. J Bot. 3: 152 (1965).

STUDIED MATERIAL: Banderilla, La Martinica, 19°35'17"N 96°57'62"W, 1580 m asl, on wood, coll. R.M. Arias, 06/06/2011, XAL-CB2120, XAL-CB2144. Acatlán, Acatlán Volcano, 19°30'47"N 96°56'31"W, 1814 m asl, on dead branch, on bark, coll. R.M. Arias, 18/09/2011, XAL-CB2251, XAL-CB2300, XAL-CB2301.

§ *Zygosporium echinosporum* Bunting & E.W. Mason, Mycol. Pap. 5: 135 (1941).

STUDIED MATERIAL: Huatusco, Las Cañadas, 19°11'23"N 96°59'11"W, 1295 m asl, on decaying leaves of *Quercus* sp., coll. R.M. Arias, 21/03/2011, XAL-CB2103. Huatusco, Las Cañadas, 19°11'23"N 96°59'11"W, 1295 m asl, on fem. coll. R.M. Arias, 21/03/2011, XAL-CB2102.

§ *Zygosporium gibbum* (Sacc., M. Rousseau & E. Bommer) S. Hughes, Can. J. Bot. 36: 825 (1958).

STUDIED MATERIAL: Banderilla, La Martinica, 19°35'17"N 96°57'62"W, 1580 m asl, on bark, coll. R.M. Arias, 06/06/2011, XAL-CB2156. Cosautlán de Carbajal, 19°20'00"N 96°59'00"W, 1172 m asl, on dead branch, coll. A. Mercado, 19/03/1996, XAL-CB620. Coatepec, Rancho Guadalupe, 19°30'00"N 97°09'00"W, 1300 m asl, on decaying leaves of *Quercus germana*, coll. G. Heredia, 16/08/1992, XAL-CB583-1. Xalapa, Las Hayas, Ecological Park, 19°30'00"N 96°56'00"W, 1460 m asl, on decaying leaves, coll. F. García, 26/03/1995, XAL-CB325-2, XAL-CB335.

§ *Zygosporium masonii* S. Hughes, Mycol. Pap. 44: 15 (1951).

STUDIED MATERIAL: San Andrés Tuxtla, San Martín Tuxtla Volcano, 18°32'06"N 95°08'28"W, 1075 m asl, on decaying leaves, coll. G. Heredia, 05/01/2011, XAL-CB1989.

*Zygosporium mycophilum* (Vuill.) Sacc., Ann. Mycol. Berl. 9: 256 (1911).  
REFERENCE: Heredia & Reyes 1999.

*Zygosporium oscheoides* Mont., Anns Sci. Nat., Bot., sér. 2 17: 121 (1842).  
REFERENCE: Mercado-Sierra & Heredia 1994

\*§ *Zygosporium pacificum* Whitton, McKenzie & K.D. Hyde, Fungal Diversity 12: 214 (2003). **Fig. 31**

STUDIED MATERIAL: Xalapa, Francisco Javier Clavijero Park, 19°30'47"N 96°56'31"W, 1340 m asl, on dead branch, coll. R.M. Arias, 05/09/2011, XAL-CB2262.

#### Acknowledgements

The authors wish to thank PhD. David W. Minter (CABI, UK), Dr. Gregorio Delgado EMLab P&k) and PhD. Luís Fernando Pascholati Gusmão (UE de Feira de Santana)

for critical review of the manuscript. We are grateful to Biol. Magdalena Gómez Columna and M. Sc. Yamel Perea Rojas for their efficient help in searching bibliographic information and technical assistance. Funding for this research was provided by the National Commission for Knowledge and Use of Biodiversity (CONABIO) of Mexico through the financial support of the projects P030, B139 & IE004. RFCR is grateful to OSDE, Grupo Agrícola from Cuban Ministry of Agriculture for facilities.

### Literature cited

- Arias RM, Heredia G & Castañeda-Ruiz RF. 2015. Adiciones al conocimiento de la diversidad de los hongos conidiales saprobios del bosque mesófilo de montaña del estado de Veracruz IV. *Acta Botánica Mexicana* 113: 87-101.  
<https://doi.org/10.21829/abm113.2015.1097>
- Arias RM, Heredia G & Castañeda-Ruiz RF. 2016. Two new species of *Bactrodesmium* and *Dictyoaquaaphila* from Mexico. *Mycotaxon* 13: 291-295.  
<https://doi.org/10.5248/131.291>
- Arias RM, Heredia G & Mena-Portales J. 2010. Adiciones al conocimiento de la diversidad de los hongos anamorfos del bosque mesófilo de montaña del estado de Veracruz III. *Acta Botánica Mexicana* 90: 19-42. <https://doi.org/10.21829/abm90.2010.297>
- Arias RM, Heredia G & Reyes M. 2000. Primer registro para México de cinco especies de hongos conidiales helicospóricos. *Revista Mexicana de Micología* 16: 27-32.
- Castañeda-Ruiz, RF & Heredia G. 2000a. *Carrismyces*, a new genus of hyphomycetes from a cloud forest in Mexico. *Mycotaxon* 76: 125-130.
- Castañeda-Ruiz RF & Heredia G. 2000b. Two new dematiaceous hyphomycetes on *Cyathea* from Mexico. *Cryptogamie Mycologie* 21: 221-228.  
[https://doi.org/10.1016/S0181-1584\(00\)01047-2](https://doi.org/10.1016/S0181-1584(00)01047-2)
- Castañeda-Ruiz RF, Heredia G & Arias RM. 2013. *Digitella rigidophora* and *Redbia inflata*, two new microfungi from Mexico. *Mycotaxon* 125: 227-233.  
<https://doi.org/10.5248/125.227>
- Castañeda-Ruiz RF, Heredia G, Arias RM, Stadler M, Saikawa M & McKenzie EH. 2012. Two new fungi from Mexico: *Anaseptoidium* gen. nov. and *Cylindrosymposium sosae* sp. nov. *Mycotaxon* 119: 141-148. <https://doi.org/10.5248/119.141>
- Castañeda-Ruiz RF, Heredia G, Arias RM, Stadler M, Saikawa M & Minter DW. 2010. *Anaselenosporella sylvatica* gen. & sp. nov. and *Pseudoacrodictys aquaticus* sp. nov., two new anamorphic fungi from Mexico. *Mycotaxon* 112: 65-74.  
<https://doi.org/10.5248/112.65>
- Castañeda-Ruiz RF, Heredia G, Gusmão LFP & Li DW. 2016. Fungal diversity of Central and South America. In: Li DW (Ed.). *Biology of Microfungi*. Springer International Publishing. Pp 197-217. [https://doi.org/10.1007/978-3-319-29137-6\\_9](https://doi.org/10.1007/978-3-319-29137-6_9)

- Castañeda-Ruiz RF, Heredia G, Reyes M, Arias RM & Decock C. 2001. A revision of the genus *Pseudospiropes* and some new taxa. *Cryptogamie Mycologie* 22: 3-18.  
[https://doi.org/10.1016/S0181-1584\(01\)01057-0](https://doi.org/10.1016/S0181-1584(01)01057-0)
- Castañeda-Ruiz RF, Heredia G, Arias RM, McKenzie EH, Hyde KD, Stadler M, & Saikawa M. 2011. New species and re-disposed taxa in *Repetophragma*. *Mycosphere* 2: 273-289.
- Delgado RG, Heredia G, Arias RM & Mena-Portales J. 2006. Contribución al estudio de los hongos anamórficos de México. Nuevos registros para el estado de Veracruz. *Boletín de la Sociedad Micológica de Madrid* 30: 235-242.
- Heredia G. 1993. Mycoflora associated with green leaves and leaves litter of *Quercus germana*, *Quercus sartorii* and *Liquidambar styraciflua* in a Mexican cloud forest. *Cryptogamie Mycologie* 14: 171-183.
- Heredia G. 1994. Hifomicetes dematiáceos en Bosque Mesófilo de Montaña. Registros nuevos para México. *Acta Botánica Mexicana* 27: 15-32.  
<https://doi.org/10.21829/abm27.1994.707>
- Heredia G & Mercado-Sierra A. 1998. Tropical Hyphomycetes of Mexico. III. Some species from Calakmul Biosphere Reserva, Campeche. *Mycotaxon* 68: 137-143.
- Heredia G & Reyes M. 1999. Hongos conidiales de bosque mesófilo: algunas especies foliícolas y de la hojarasca desconocidas para México. *Revista Mexicana de Micología* 15: 79-88.
- Heredia G, Arias RM & Reyes M. 2000a. Contribución al conocimiento de los hongos Hyphomycetes de México. *Acta Botánica Mexicana* 51: 39-51.  
<https://doi.org/10.21829/abm51.2000.849>
- Heredia G, Arias RM & Reyes M. 2000b. Leaves litter fungi. Eight setose conidial species unknown from Mexico. *Revista Mexicana de Micología* 16: 17-25.
- Heredia G, Arias RM, Castañeda-Ruiz RF & Minter DW. 2014. New species of *Lobatopedis* and *Minimelanolocus* (anamorphic fungi) from a Mexican cloud forest. *Nova Hedwigia* 98: 31-40. <https://doi.org/10.1127/0029-5035/2013/0146>
- Heredia G, Arias RM, Mena-Portales J & Mercado-Sierra A. 2006. Adiciones al conocimiento de la diversidad de los hongos conidiales del bosque mesófilo de montaña del estado de Veracruz. II. *Acta Botánica Mexicana* 77: 15-30.  
<https://doi.org/10.21829/abm77.2006.1023>
- Heredia G, Arias RM, Reyes M & Castañeda-Ruiz R. 2002. New anamorph fungi with rhombic conidia from Mexican tropical forest litter. *Fungal Diversity* 11: 99-107.
- Heredia G, Mena-Portales J & Mercado-Sierra A. 1997. Hyphomycetes saprobios tropicales. Nuevos registros de dematiáceos para Mexico. *Revista Mexicana de Micología* 13: 41-47.
- Heredia G, Mercado-Sierra A & Mena-Portales J. 1995. Conidial fungi from leaves litter in a mesophilic cloud forest of Veracruz, Mexico. *Mycotaxon* 55: 473-490.
- Heredia G, Reyes M, Arias RM, Mena-Portales J & Mercado-Sierra A. 2004. Adiciones al conocimiento de la diversidad de los hongos conidiales del bosque mesófilo de montaña del estado de Veracruz. *Acta Botánica Mexicana* 66: 1-22.  
<https://doi.org/10.21829/abm66.2004.969>

- Heredia G, Mena-Portales J, Mercado-Sierra A & Gómez M. 2013. New records of tropical litter anamorphic fungi for Mexico. *Revista Mexicana de Micología* 37: 69-81.
- Mena-Portales J, Heredia G & Mercado-Sierra A. 1995. Especies de *Bipolaris* y *Curvularia* halladas sobre hojas de *Quercus* y *Liquidambar* en el estado de Veracruz, México. *Revista Mexicana de Micología* 11: 109-121.
- Mena-Portales J, Heredia G, Mercado-Sierra A, Becerra-Hernández CI, Arias RM & Gómez S. 2009. Especies de *Stachybotrys* Corda (Hongos Anamorfos) de Regiones Tropicales y Subtropicales de México. *Boletín de la Sociedad Micológica de Madrid* 33: 85-101.
- Mercado-Sierra A & Heredia G. 1994. Hyphomycetes asociados a restos vegetales en el estado de Veracruz, México. *Revista Mexicana de Micología* 10: 33-48.
- Mercado-Sierra A, Heredia G & Mena-Portales J. 1995. New species of dematiaceous Hyphomycetes. *Mycotaxon* 55: 491-499.
- Mercado-Sierra A, Heredia G & Mena-Portales J. 1997. Tropical hyphomycetes of Mexico. I. New species of *Hemicorynespora*, *Piricauda* and *Rhinocladium*. *Mycotaxon* 63: 155-167.
- Mercado-Sierra A, Mena-Portales J, Guarro J & Heredia G. 2002. *Veracruzomyces*, a new anamorphic genus from Mexico. *Nova Hedwigia* 75: 533-537. <https://doi.org/10.1127/0029-5035/2002/0075-0533>
- Rzedowski J. 1991. Diversidad y orígenes de la flora fanerogámica de México. *Acta Botánica Mexicana* 14: 3-21. <https://doi.org/10.21829/abm14.1991.611>