

NORMA OCCIPITALIS

NORMA OCCIPITALIS

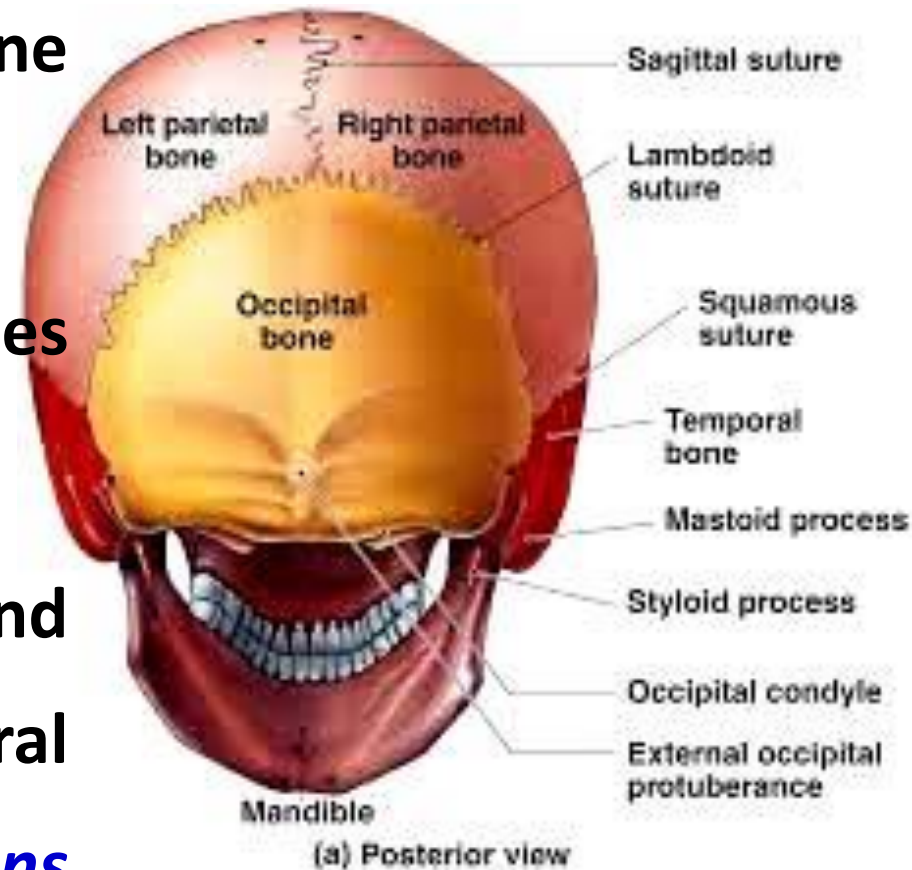
- **Posterior or back view of the skull**
- **Simplest view among all the views**
- **Upper part is convex and lower part is flat**

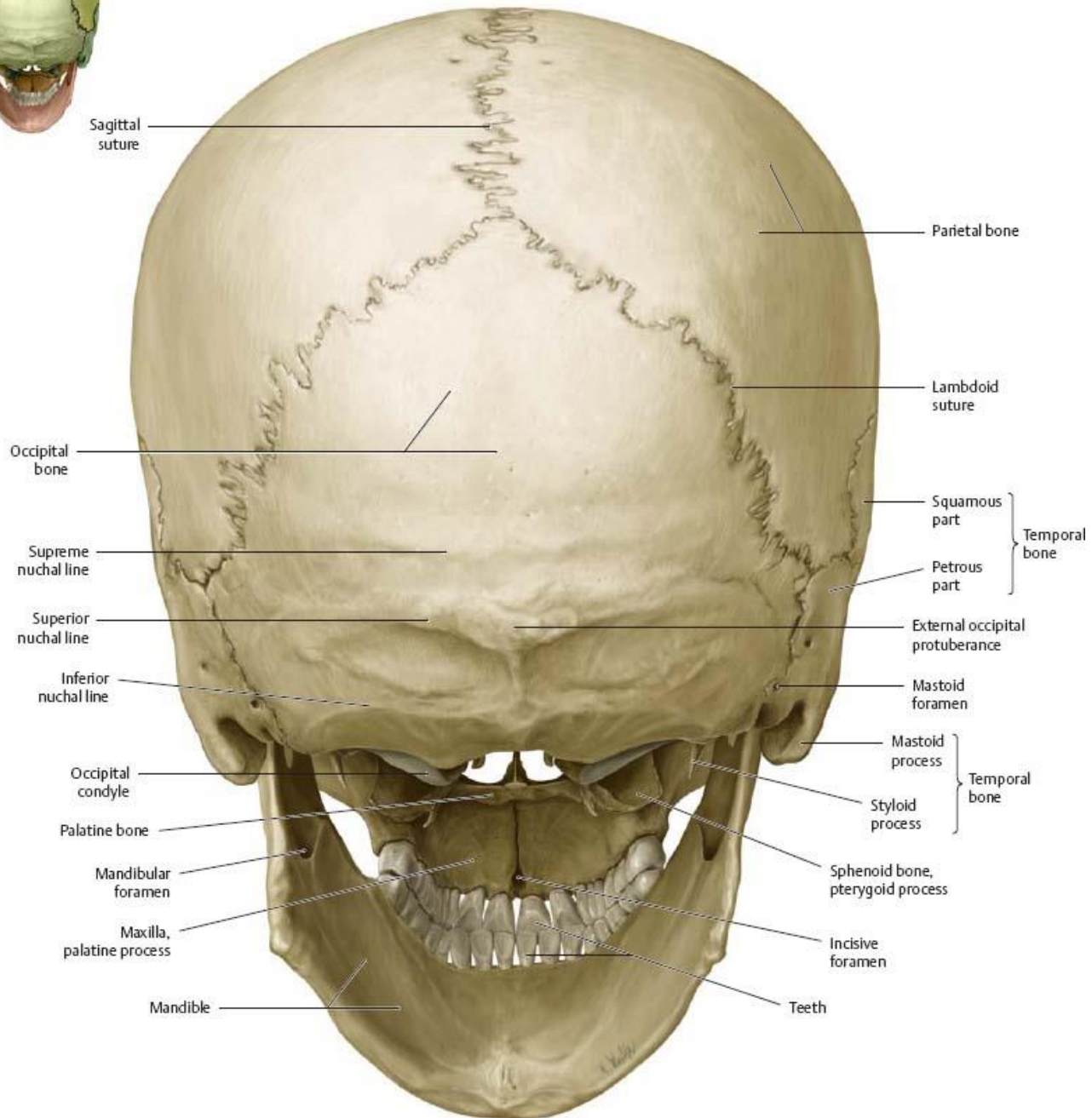
Principal bones

1. Unpaired occipital bone
(*squamous part*)

2. Paired parietal bones
(*posterior part*)

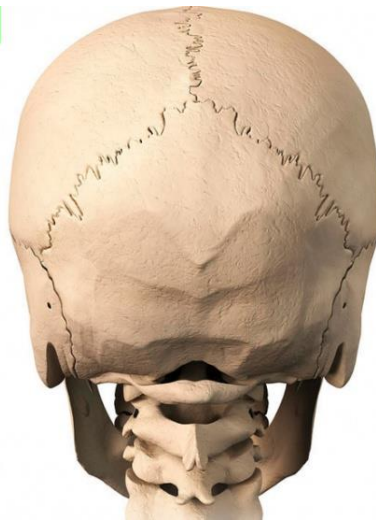
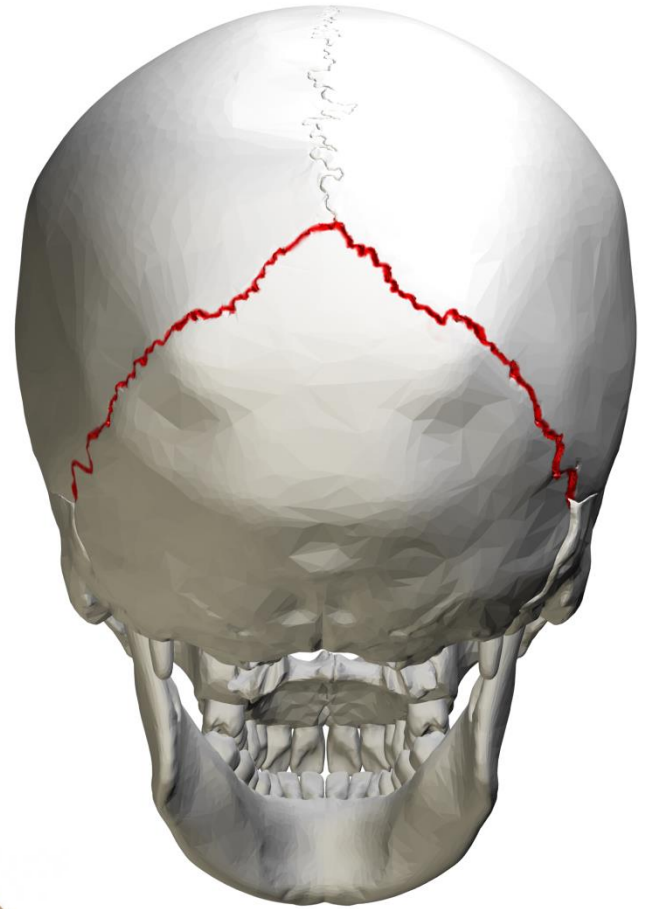
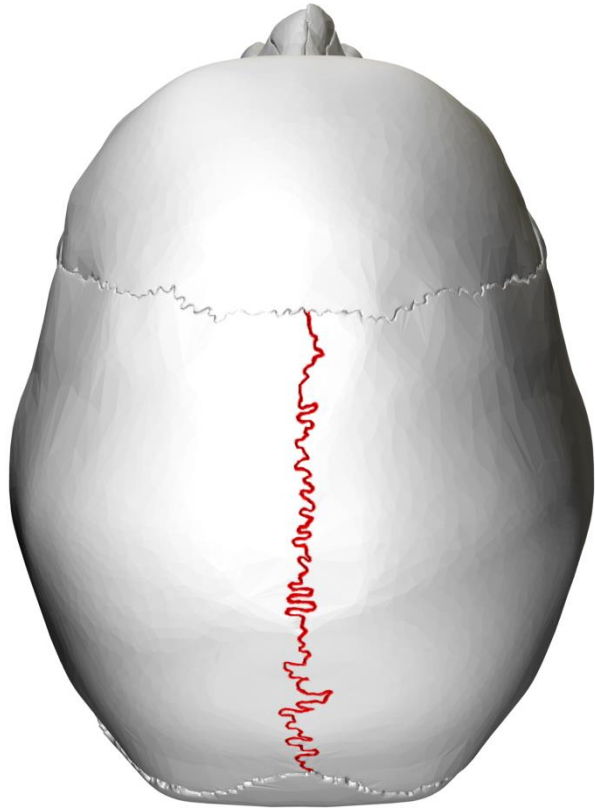
3. Paired mastoid process and squamous part of temporal bones (*minimal contributions on lateral and inferior aspect of skull*)





Principle sutures

- 1. *Posterior third of sagittal suture***, present between the two parietal bones
- 2. *Lambdoidal suture*** – present between the occipital and two parietal bones
- 3. *Occipitomastoid suture*** – present between the occipital bone and the mastoid part of the temporal bone
- 4. *Parietomastoid suture*** – present between the parietal bone and the mastoid part of the temporal bone

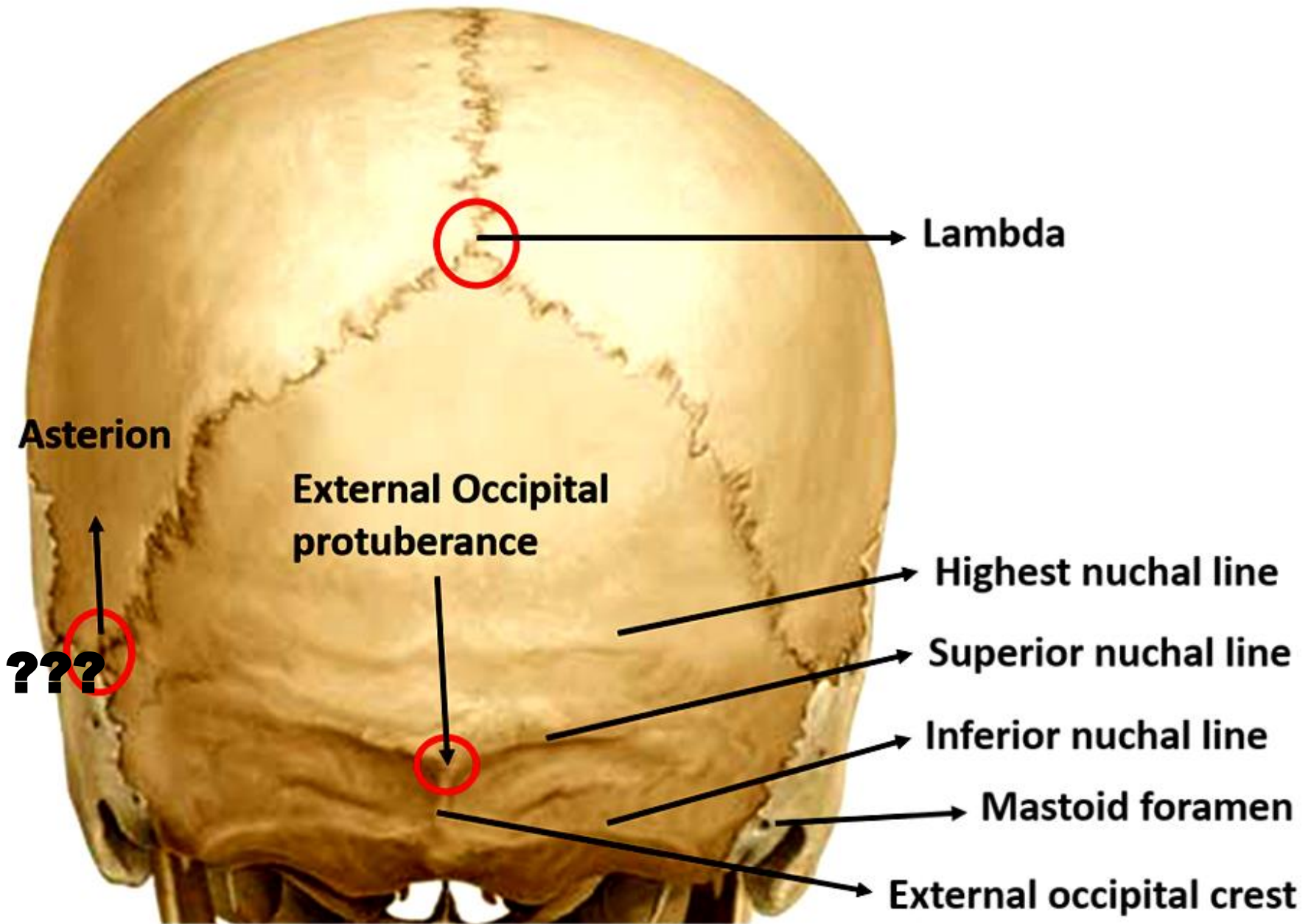


Prominent landmarks & reference points

- 1. Lambda**
- 2. External occipital protuberance**
- 3. Inion**
- 4. Superior nuchal line**
- 5. Inferior nuchal line**
- 6. Highest nuchal line**
- 7. Mastoid processes of temporal bone**

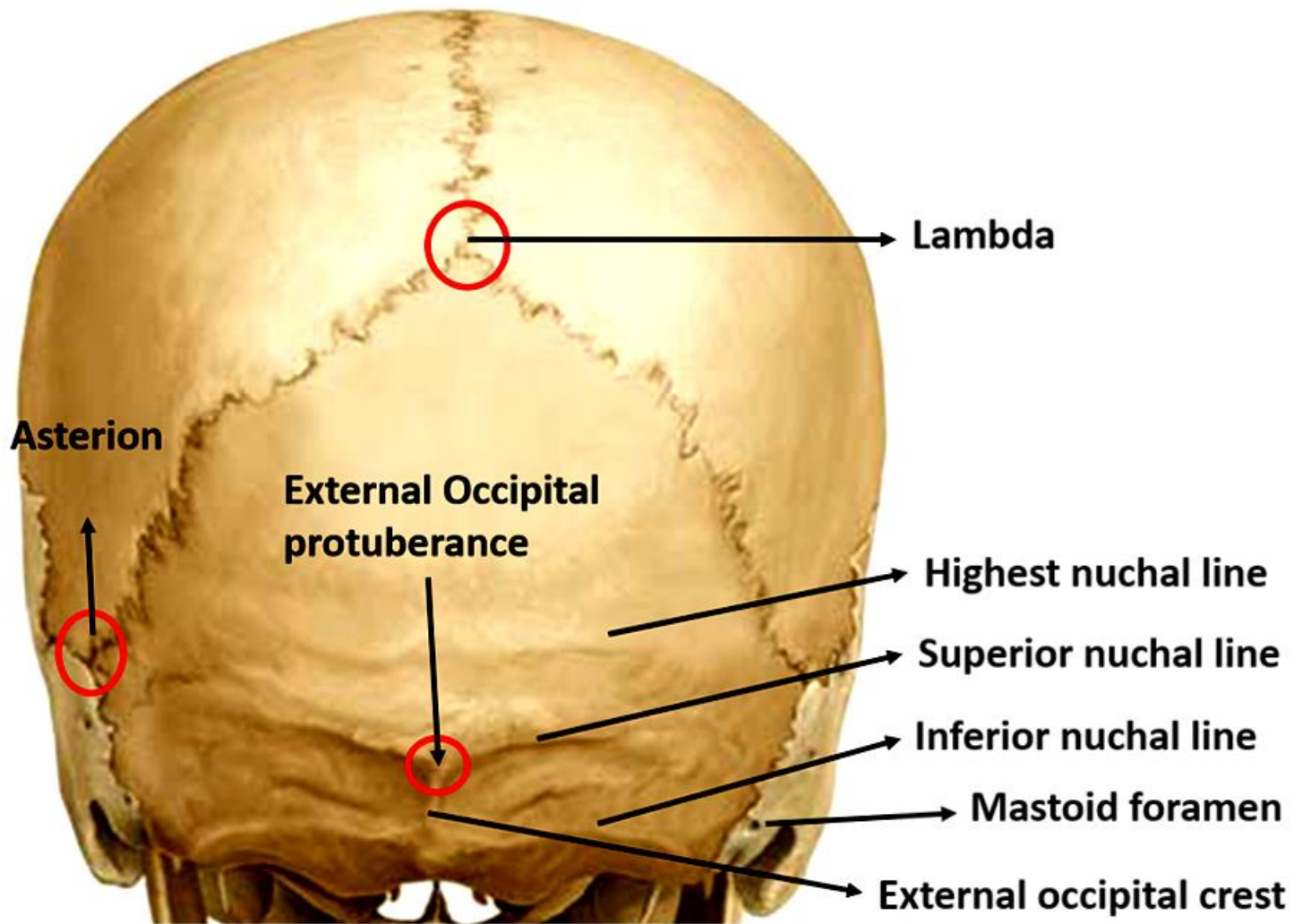
Prominent landmarks & reference points

- 1. *Lambda*** – point of intersection of the sagittal and lambdoidal sutures
- 2. *External occipital protuberance*** – is a raised roughened areas on the midline 8-10cm below the lambda
- 3. *Inion*** – most prominent point of the external occipital protuberance

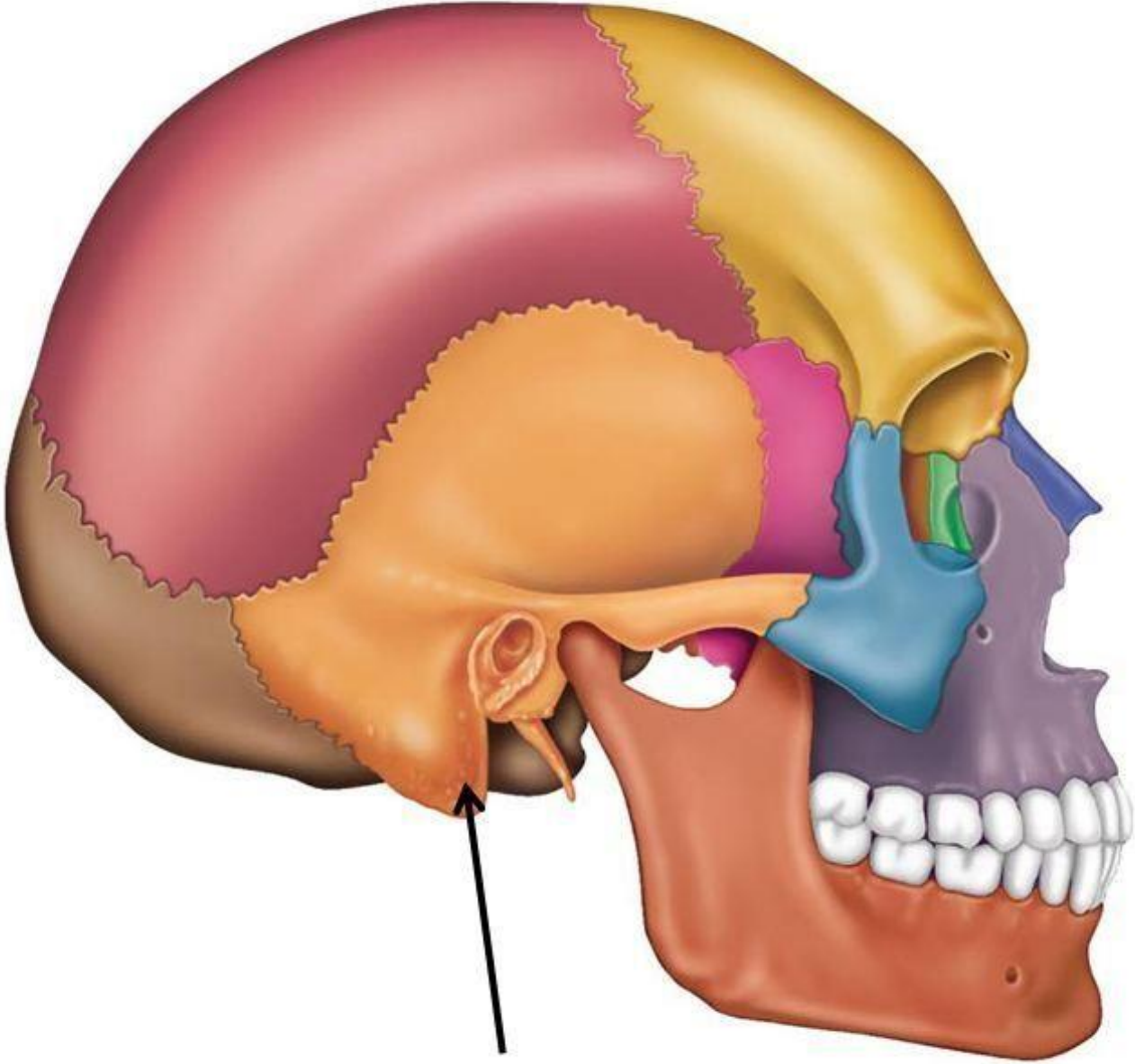


Prominent landmarks & reference points

- 1. *External occipital crest*** – midline crest present between the external occipital protuberance and posterior border of foramen magnum; also called as median nuchal line
- 2. *Mastoid processes of temporal bone*** – present at the inferolateral angles of the skull in norma occipitalis; situated immediately behind the auricle or external acoustic meatus

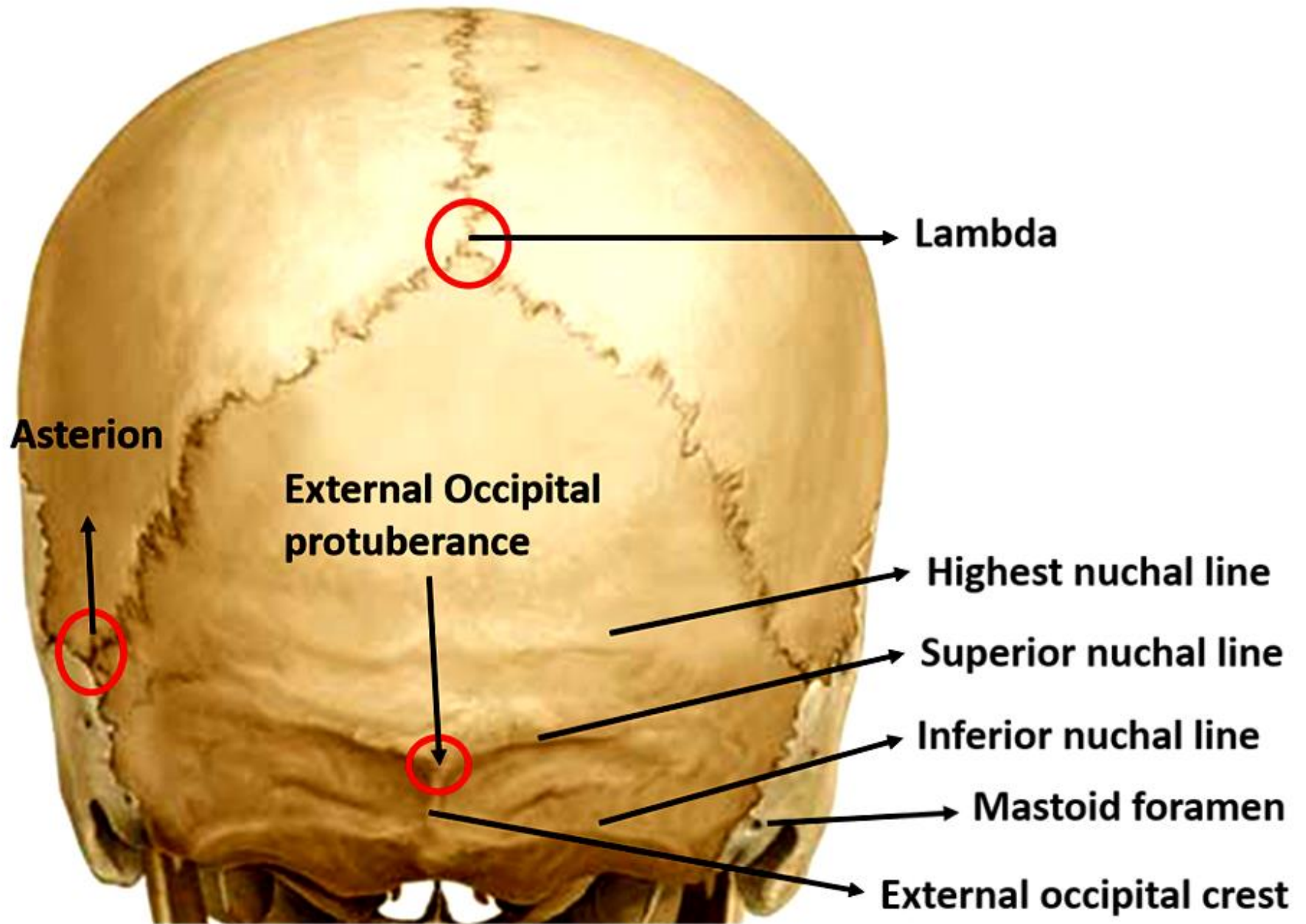






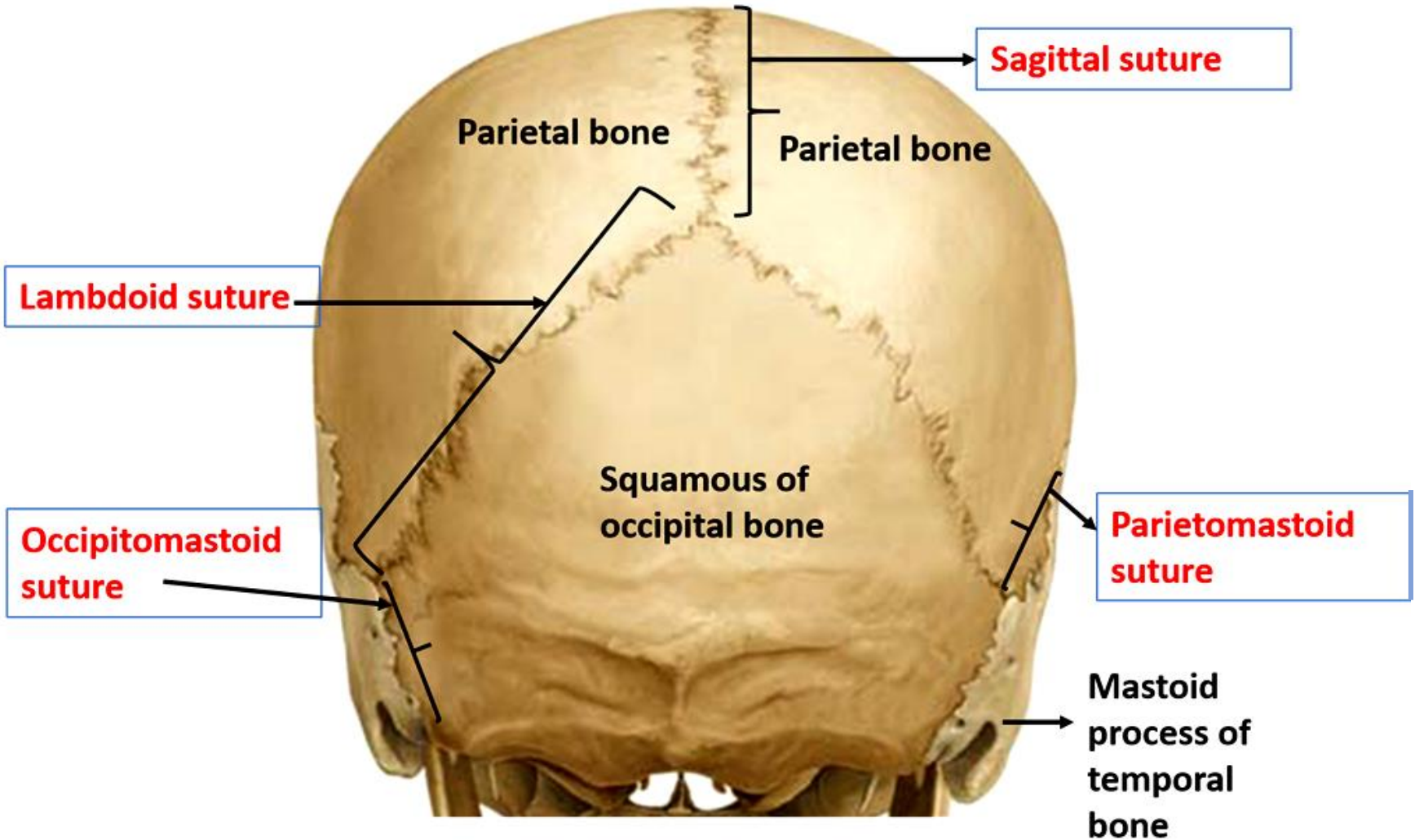
Prominent landmarks & reference points

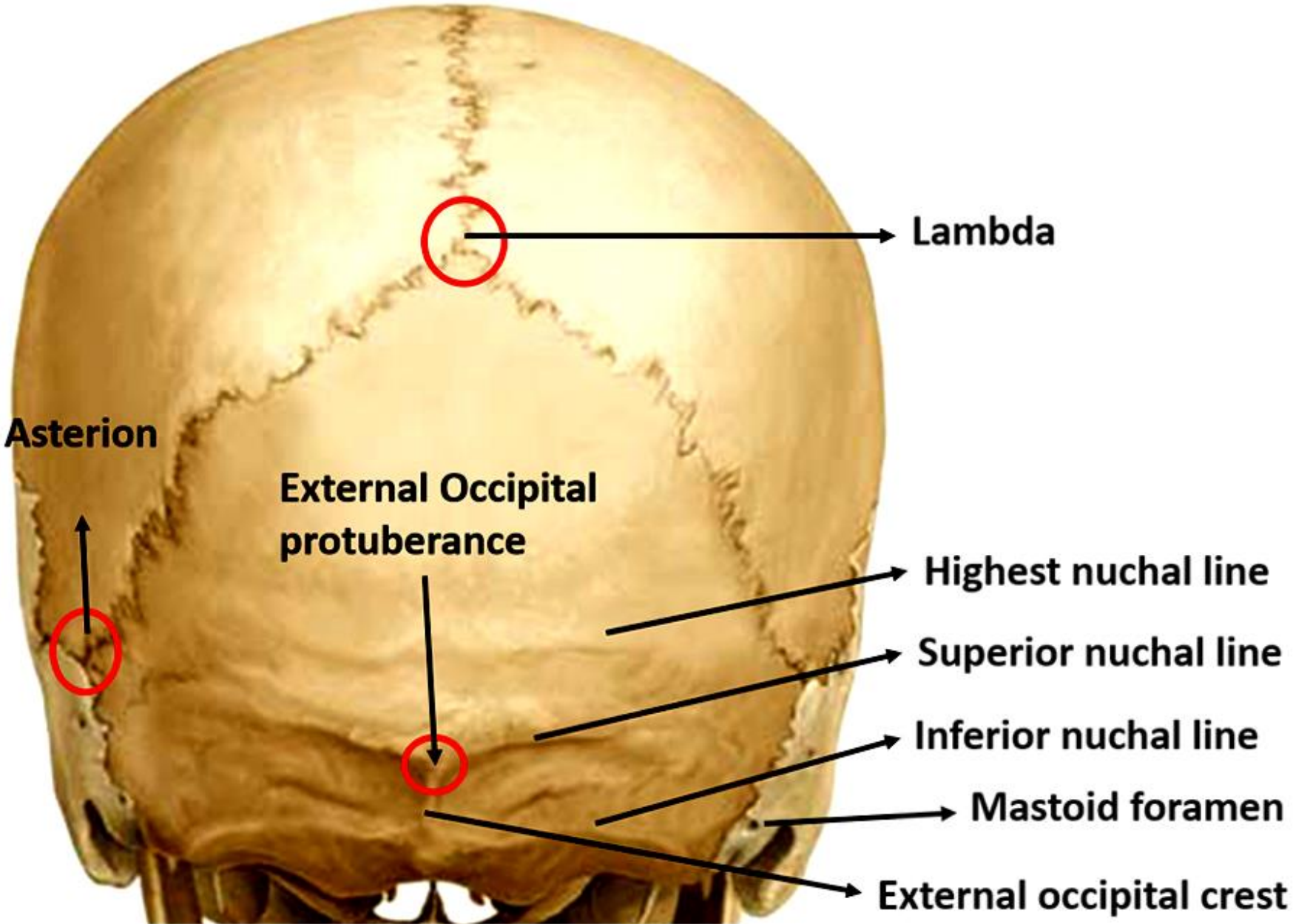
- 1. *Superior nuchal line*** – prominent horizontal ridge running laterally from the external occipital protuberance to the mastoid process of temporal bone
- 2. *Highest nuchal line*** – faint ridge present above and parallel to superior nuchal line
- 3. *Inferior nuchal line*** – running on lateral side of middle of external occipital crest



Prominent landmarks & reference points

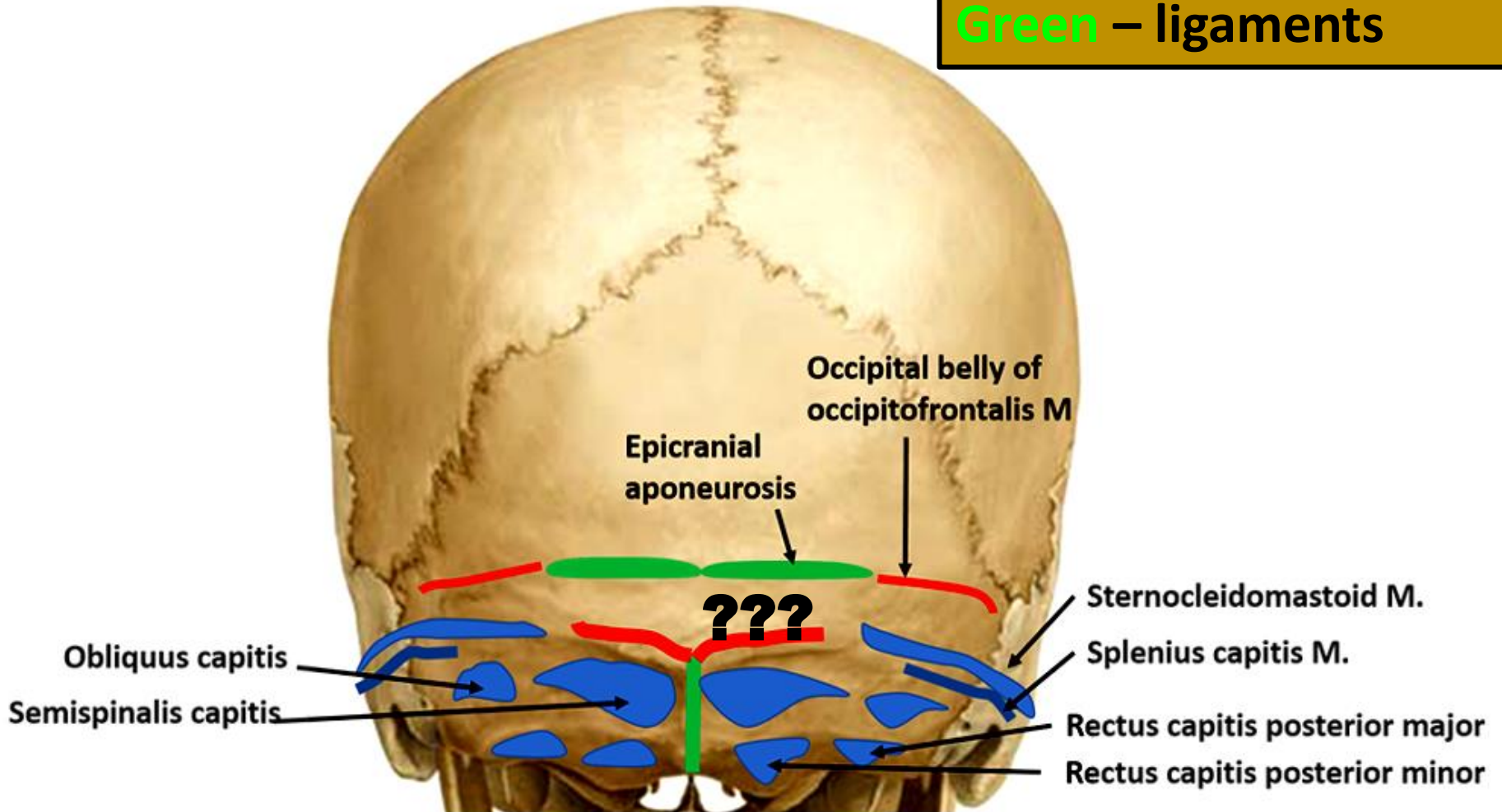
- 1. Superior nuchal line*** – prominent horizontal ridge running laterally from the external occipital protuberance to the mastoid process of temporal bone
- 2. Highest nuchal line*** – faint ridge present above and parallel to superior nuchal line
- 3. Inferior nuchal line*** – running on lateral side of middle of external occipital crest
- 4. External occipital crest*** – U
- 5. Mastoid processes of temporal bone*** – present at the





Attachments

Red – muscle origin
Blue – muscle insertion
Green – ligaments





Neurovascular exit portals

- **Parieto-mastoid foramina**
- **Parietal foramina**

Other features

- **Sutural bones or Wormian bones**
- **Interparietal bones**



