

- Legend**
- Proposed Turbine Location
 - Onsite substation included with planning application for Bryn Llywelyn Wind Farm
 - Onsite substation included with planning application for Brechfa Forest East Wind Farm
 - Onsite substation included with planning application for Brechfa Forest West Wind Farm
 - Grid Connection Point Options
 - Bryn Llywelyn Wind Farm Boundary
 - Brechfa Forest West Wind Farm Boundary
 - Brechfa Forest East Wind Farm Boundary
 - Conservation Areas (Carmarthenshire County Council UDP)
 - Historic Parks and Gardens (Cadw)
 - Special Landscape Areas (Carmarthenshire County Council UDP 2006)
 - Special Landscape Areas (Carmarthenshire Local Development Plan Deposit June 2011)
 - Settlements as derived from OS mapping
 - Main Woodland Blocks as taken from OS mapping
 - CCW Landmap
 - Visual and Sensory Area - Outstanding
 - Visual and Sensory Area - High
 - PRoWs (Carmarthenshire County Council)
 - BOAT
 - Bridleway
 - Footpath
 - Public Footpaths - Llanarthne Community (Cynfor Cymuned Llanarthne/ Llanarthne Community Council)
 - National Route (Sustrans)
 - Long Distance Footpaths
 - Approximate route of Tywi Trail
 - Open country (CCW)
 - Registered common land (CCW)
 - Additional Wind Turbine Location
 - Preliminary Route Options
 - Current Route Options



Rev	Date	Description	Dm	Chk	App
00	12-02-14	First Draft	JG	DW	VR

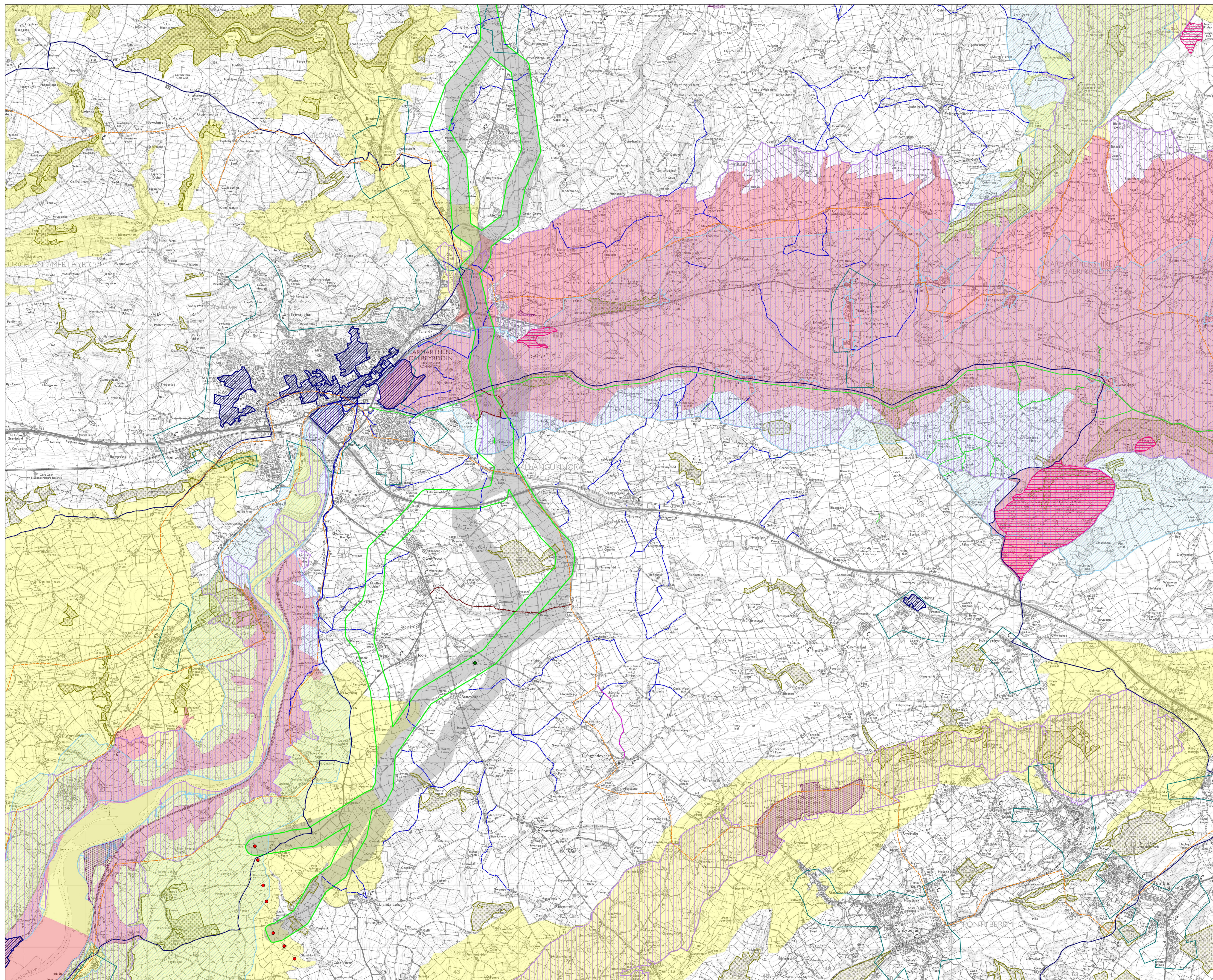
Brechfa Forest



TITLE: Figure 3a
Alignments and
Landscape Designations
(Map 1 of 2)

SCALE: 1:20,000 @ A0

FILE NAME: P:\EIA\110000 - EPD South Projects\110516 - Brechfa Forest\GIS\Alignments_and_Landscape_Constraints_Map1_Jan2014.wor



- Legend**
- Proposed Turbine Location
 - Onsite substation included with planning application for Bryn Llywelyn Wind Farm
 - Onsite substation included with planning application for Brechfa Forest East Wind Farm
 - Onsite substation included with planning application for Brechfa Forest West Wind Farm
 - Grid Connection Point Options
 - ▭ Bryn Llywelyn Wind Farm Boundary
 - ▭ Brechfa Forest West Wind Farm Boundary
 - ▭ Brechfa Forest East Wind Farm Boundary
 - ▨ Conservation Areas (Carmarthenshire County Council UDP)
 - ▨ Historic Parks and Gardens (Cadw)
 - ▨ Special Landscape Areas (Carmarthenshire County Council UDP 2006)
 - ▨ Special Landscape Areas (Carmarthenshire Local Development Plan Deposit June 2011)
 - ▭ Settlements as derived from OS mapping
 - ▭ Main Woodland Blocks as taken from OS mapping
 - ▭ CCW Landmap
 - ▭ Visual and Sensory Area - Outstanding
 - ▭ Visual and Sensory Area - High
 - ▭ PRowWs (Carmarthenshire County Council)
 - ▭ BOAT
 - ▭ Bridleway
 - ▭ Footpath
 - ▭ Public Footpaths - Llanarthne Community (Cyngor Cymuned Llanarthne/ Llanarthne Community Council)
 - ▭ National Route (Sustrans)
 - ▭ Long Distance Footpaths
 - ▭ Approx route of Tywi Trail
 - ▭ Open country (CCW)
 - ▭ Registered common land (CCW)
 - Additional Wind Turbine Location
 - ▭ Preliminary Route Options
 - ▭ Current Route Options



Rev	Date	Description	Dm	Chk	App
00	12-02-14	First Draft	JG	DW	VR

Brechfa Forest



TITLE: Figure 3b
Alignments and
Landscape Designations
(Map 2 of 2)

SCALE: 1:20,000 @ A0